

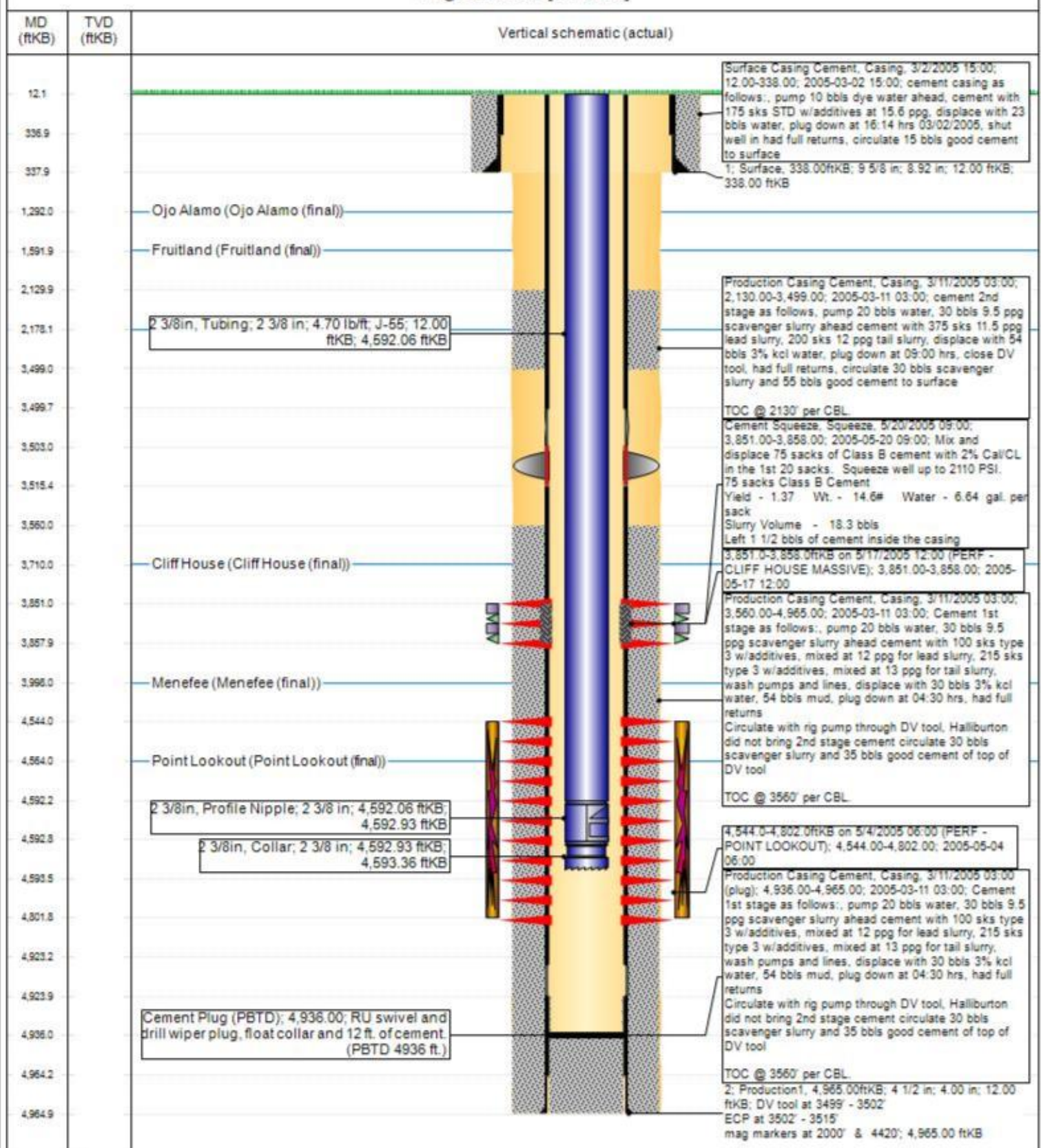


## Current Schematic - Version 3

Well Name: MONTOYA #1R

API / UWI 3004532335	Surface Legal Location B-35-32N-13W	Field Name LAPLATA	Route 0211	State/Province NEW MEXICO	Well Configuration Type Vertical
Ground Elevation (ft) 5,881.00	Original KB/RT Elevation (ft) 5,893.00	KB-Ground Distance (ft) 12.00	KB-Casing Flange Distance (ft)	KB-Tubing Hanger Distance (ft)	

## Original Hole [Vertical]



**District I**  
1625 N. French Dr., Hobbs, NM 88240  
Phone:(575) 393-6161 Fax:(575) 393-0720  
**District II**  
811 S. First St., Artesia, NM 88210  
Phone:(575) 748-1283 Fax:(575) 748-9720  
**District III**  
1000 Rio Brazos Rd., Aztec, NM 87410  
Phone:(505) 334-6178 Fax:(505) 334-6170  
**District IV**  
1220 S. St Francis Dr., Santa Fe, NM 87505  
Phone:(505) 476-3470 Fax:(505) 476-3462

**State of New Mexico**  
**Energy, Minerals and Natural Resources**  
**Oil Conservation Division**  
**1220 S. St Francis Dr.**  
**Santa Fe, NM 87505**

CONDITIONS  
  
Action 44317

CONDITIONS

Operator: HILCORP ENERGY COMPANY 1111 Travis Street Houston, TX 77002	OGRID: 372171
	Action Number: 44317
	Action Type: [UF-WBS] Wellbore Schematic (WELLBORE SCHEMATICS)

CONDITIONS

Created By	Condition	Condition Date
mkuehling	None	9/7/2021