

<b>Well Name:</b> MESCAL SE FED	<b>Well Location:</b> T21S / R22E / SEC 18 / NENW /	<b>County or Parish/State:</b> EDDY / NM
<b>Well Number:</b> 1	<b>Type of Well:</b> CONVENTIONAL GAS WELL	<b>Allottee or Tribe Name:</b>
<b>Lease Number:</b> NMNM14459	<b>Unit or CA Name:</b>	<b>Unit or CA Number:</b>
<b>US Well Number:</b> 300152400200X2	<b>Well Status:</b> Abandoned	<b>Operator:</b> EOG RESOURCES INCORPORATED

FOR RECORD ONLY

SUBJECT TO LIKE APPROVAL BY BLM

NMOCD 9/17/21

X7

**Subsequent Report**

**Sundry ID:** 2630759

**Type of Submission:** Subsequent Report

**Type of Action:** Plug and Abandonment

**Date Sundry Submitted:** 08/26/2021

**Time Sundry Submitted:** 09:32

**Date Operation Actually Began:** 07/20/2021

**Actual Procedure:** Please see attached procedure. Thank you.

**SR Attachments**

**Actual Procedure**

Mescal\_SE\_Federal\_1\_8\_26\_21\_20210826093207.pdf

**Well Name:** MESCAL SE FED

**Well Location:** T21S / R22E / SEC 18 / NENW /

**County or Parish/State:** EDDY / NM

**Well Number:** 1

**Type of Well:** CONVENTIONAL GAS WELL

**Allottee or Tribe Name:**

**Lease Number:** NMNM14459

**Unit or CA Name:**

**Unit or CA Number:**

**US Well Number:** 300152400200X2

**Well Status:** Abandoned

**Operator:** EOG RESOURCES INCORPORATED

### Operator Certification

*I certify that the foregoing is true and correct. Title 18 U.S.C. Section 1001 and Title 43 U.S.C. Section 1212, make it a crime for any person knowingly and willfully to make to any department or agency of the United States any false, fictitious or fraudulent statements or representations as to any matter within its jurisdiction. Electronic submission of Sundry Notices through this system satisfies regulations requiring a submission of Form 3160-5 or a Sundry Notice.*

**Operator Electronic Signature:** TINA HUERTA

**Signed on:** AUG 26, 2021 09:32 AM

**Name:** EOG RESOURCES INCORPORATED

**Title:** Regulatory Specialist

**Street Address:** 104 SOUTH FOURTH STREET

**City:** Artesia

**State:** NM

**Phone:** (575) 748-4168

**Email address:** tina\_huerta@eogresources.com

### Field Representative

**Representative Name:**

**Street Address:**

**City:**

**State:**

**Zip:**

**Phone:**

**Email address:**

### BLM Point of Contact

**BLM POC Name:** JAMES A AMOS

**BLM POC Title:** Acting Assistant Field Manager

**BLM POC Phone:** 5752345927

**BLM POC Email Address:** jamos@blm.gov

**Disposition:** Accepted

**Disposition Date:** 08/26/2021

**Signature:** James A. Amos

**Mescal SE Federal 1 – Sub P&A**

7/20/21 – MIRU and NU BOP. RIH and latch onto and release RBP at 6080 ft. RIH and confirmed CIBP at 7630 ft. Jim Amos with BLM-Carlsbad gave approval to spot the first plug with 25 sx at 7630 ft.

7/28/21 - Spotted 25 sx Class H cement on top of CIBP to 7403 ft. Spotted a 25 sx Class C cement plug from 7200 ft – 6947 ft. Spotted a 25 sx Class C cement plug from 6695 ft – 6442 ft.

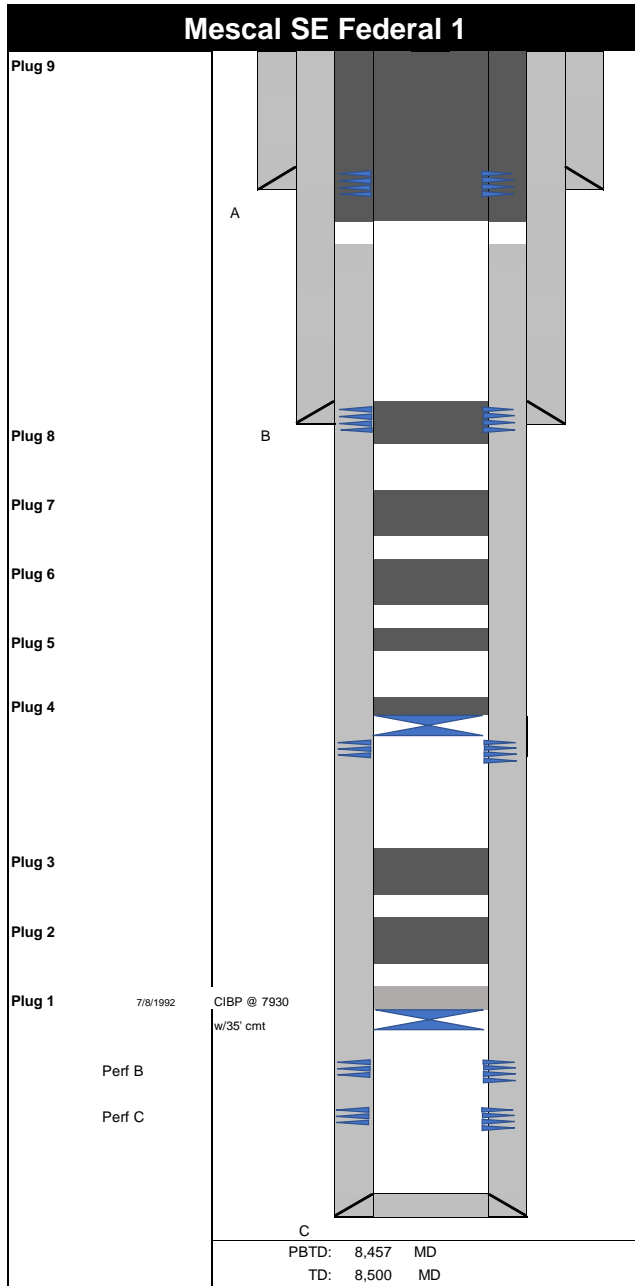
7/30/21 – Set a 2<sup>nd</sup> CIBP at 5822 ft and tagged. Spotted 25 sx Class C cement on top of CIBP to 5572 ft.

8/2/21 – Tagged TOC 5570, good tag. Tested casing to 500 psi, good. Spotted a 25 sx Class C cement plug from 4699 ft – 4445 ft. Spotted a 25 sx Class C cement plug from 3462 ft – 3208 ft. Spotted a 25 sx Class C cement plug from 2876 ft – 2622 ft. Perforated at 1850 ft. Attempted to establish injection rate unsuccessfully to 600 psi with no bleed off. Spotted a 25 sx Class C cement plug from 1903 ft – 1295 ft.

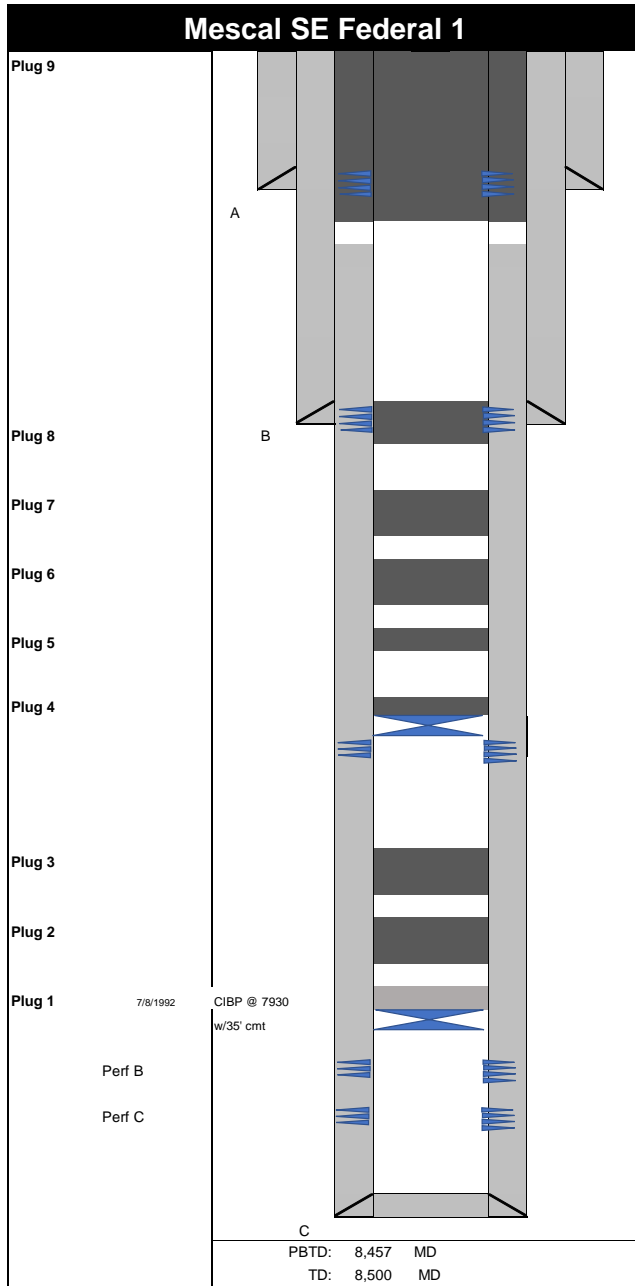
8/3/21 – Tagged TOC 1360 ft. Perforated at 650 ft. Established injection rate with returns to surface after pumping 65 bbls fresh water, pumped an additional 10 bbls. Mixed and pumped 260 sx Class C cement, 61 bbls, lost circulation last 20 sx.

8/4/21 – Attempted to tag TOC at 650 ft and failed. TOC from prior plug set was re-tagged at 1360 ft. Established injection rate through perf. Established full circulation after 24 bbls. Mixed and pumped a total of 220 sx Class C cement down 5-1/2 inch casing to perf at 650 ft and back to surface successfully.

8/6/21 - Cut off wellhead. Installed dry hole marker as per BLM. Cover cellar and cut off anchors. **WELL IS PLUGGED AND ABANDONED.**



Sec-TWN-RNG: Sec. 18-T21S-R22E		API: 3001524002							
FOOTAGES: 600' FNL & 1750' FWL		GL: 4420							
		KB:							
<b>CASING DETAIL</b>									
#	HOLE SIZE	SIZE	WGHT	GRADE	Top	Bottom	Sx Cmt	Circ/TOC	TOC Method
A	17 1/2	13 3/8	54.5		0	359	625	0	Topped off
B	12 1/4	9 5/8	36		0	1,800	950	0	Topped off
C	7 7/8	5 1/2	15.5/17		0	8,500	1435	715	Calculated
<b>FORMATION TOPS</b>									
	Formation	Top		Formation	Top				
	Tubb	2826		Mississippian	8443				
	Abo	3412							
	WC	4649							
	Cisco	5670							
	L Canyon	6645							
	Strawn	7150							
	Atoka	7635							
	Morrow Cl	7977							
	L Morrow	8118							
	Austin	8245							
	Chester	8364							
<b>TUBING DETAIL</b>									
#	Joints	Description	Length	OD	ID	Grade	Wt (lb/ft):	Top (ftKB):	Btm (ftKB):
	2 7/8		5819						
	Packer								
<b>Perforation Detail</b>									
	Formation	Top	Bottom	Treatment					
A	Cisco	5872	6030	Acidize w/4000g 15% NEFE & 48 balls/Acidize 5872-82 w/3000g 15% NEFE acid & 32 balls					
B	U Morrow	7994	8003						
C	Morrow	8129	8134						
<b>Plugs</b>									
#	SX	Class	Top	Bottom	Tag	Notes			
1	25	H	7403	7630	N	CIBP already there			
2	25	C	6947	7200	N				
3	25	C	6442	6695	N				
4	25	C	5570	5822	Y	CIBP			
5	25	C	4445	4699	N				
6	25	C	3208	3462	N				
7	25	C	2622	2876	N				
8	25	C	1360	1903	Y	Perforated			
9	220	C	0	650	N	Perforated			
7/8"1992 CIBP @ 7930 w/35' cmt Perf B Perf C PBTB: 8,457 MD TD: 8,500 MD									
Prepared by Hiram C 2/25/2021									



<b>Sec-TWN-RNG: Sec. 18-T21S-R22E</b>		<b>API: 3001524002</b>							
<b>FOOTAGES: 600' FNL &amp; 1750' FWL</b>		<b>GL: 4420</b>							
		<b>KB:</b>							
<b>CASING DETAIL</b>									
#	HOLE SIZE	SIZE	WGHT	GRADE	Top	Bottom	Sx Cmt	Circ/TOC	TOC Method
A	17 1/2	13 3/8	54.5		0	359	625	0	Topped off
B	12 1/4	9 5/8	36		0	1,800	950	0	Topped off
C	7 7/8	5 1/2	15.5/17		0	8,500	1435	715	Calculated
<b>FORMATION TOPS</b>									
	Formation	Top		Formation	Top				
	Tubb	2826		Mississippian				8443	
	Abo	3412							
	WC	4649							
	Cisco	5670							
	L Canyon	6645							
	Strawn	7150							
	Atoka	7635							
	Morrow Cl	7977							
	L Morrow	8118							
	Austin	8245							
	Chester	8364							
<b>TUBING DETAIL</b>									
#	Joints	Description	Length	OD	ID	Grade	Wt (lb/ft):	Top (ftKB):	Btm (ftKB):
	2 7/8		5819						
		Packer							
<b>Perforation Detail</b>									
	Formation	Top	Bottom		Treatment				
A	Cisco	5872	6030		Acidize w/4000g 15% NEFE & 48 balls/Acidize 5872-82 w/3000g 15% NEFE acid & 32 balls				
B	U Morrow	7994	8003						
C	Morrow	8129	8134						
<b>Plugs</b>									
#	SX	Class	Top	Bottom	Tag	Notes			
1	25	H	7403	7630	N	CIBP already there			
2	25	C	6947	7200	N				
3	25	C	6442	6695	N				
4	25	C	5570	5822	Y	CIBP			
5	25	C	4445	4699	N				
6	25	C	3208	3462	N				
7	25	C	2622	2876	N				
8	25	C	1360	1903	Y	Perforated			
9	220	C	0	650	N	Perforated			
<b>Prepared by Hiram C 2/25/2021</b>									

**District I**  
 1625 N. French Dr., Hobbs, NM 88240  
 Phone:(575) 393-6161 Fax:(575) 393-0720

**District II**  
 811 S. First St., Artesia, NM 88210  
 Phone:(575) 748-1283 Fax:(575) 748-9720

**District III**  
 1000 Rio Brazos Rd., Aztec, NM 87410  
 Phone:(505) 334-6178 Fax:(505) 334-6170

**District IV**  
 1220 S. St Francis Dr., Santa Fe, NM 87505  
 Phone:(505) 476-3470 Fax:(505) 476-3462

**State of New Mexico**  
**Energy, Minerals and Natural Resources**  
**Oil Conservation Division**  
**1220 S. St Francis Dr.**  
**Santa Fe, NM 87505**

CONDITIONS  
 Action 46528

**CONDITIONS**

Operator: EOG RESOURCES INC P.O. Box 2267 Midland, TX 79702	OGRID: 7377
	Action Number: 46528
	Action Type: [C-103] Sub. Plugging (C-103P)

**CONDITIONS**

Created By	Condition	Condition Date
kfortner	Like approval from BLM	9/17/2021