

Office
District I - (575) 393-6161
1625 N. French Dr., Hobbs, NM 88240
District II - (575) 748-1283
811 S. First St., Artesia, NM 88210
District III - (505) 334-6178
1000 Rio Brazos Rd., Aztec, NM 87410
District IV - (505) 476-3460
1220 S. St. Francis Dr., Santa Fe, NM 87505

State of New Mexico
Energy, Minerals and Natural Resources

Form C-103
Revised July 18, 2013

OIL CONSERVATION DIVISION
1220 South St. Francis Dr.
Santa Fe, NM 87505

WELL API NO. 30-025-46059
5. Indicate Type of Lease STATE [X] FEE []
6. State Oil & Gas Lease No. 325655
7. Lease Name or Unit Agreement Name SOUTH RIDGE 8030 2-11 STATE
8. Well Number 1H
9. OGRID Number 260297
10. Pool name or Wildcat OJO CHISO; BONE SPRING, SOUTH
11. Elevation (Show whether DR, RKB, RT, GR, etc.) 3388'

SUNDRY NOTICES AND REPORTS ON WELLS
(DO NOT USE THIS FORM FOR PROPOSALS TO DRILL OR TO DEEPEN OR PLUG BACK TO A DIFFERENT RESERVOIR. USE "APPLICATION FOR PERMIT" (FORM C-101) FOR SUCH PROPOSALS.)
1. Type of Well: Oil Well [X] Gas Well [] Other []
2. Name of Operator BTA OIL PRODUCERS, LLC
3. Address of Operator 104 S. Pecos, Midland, TX. 79701
4. Well Location
Unit Letter E : 2294 feet from the NORTH line and 1136 feet from the WEST line
Section 2 Township 23-S Range 34-E NMPM County LEA

12. Check Appropriate Box to Indicate Nature of Notice, Report or Other Data

NOTICE OF INTENTION TO:
PERFORM REMEDIAL WORK [] PLUG AND ABANDON []
TEMPORARILY ABANDON [] CHANGE PLANS []
PULL OR ALTER CASING [] MULTIPLE COMPL []
DOWNHOLE COMMINGLE []
CLOSED-LOOP SYSTEM []
OTHER: []
SUBSEQUENT REPORT OF:
REMEDIAL WORK [] ALTERING CASING []
COMMENCE DRILLING OPNS. [] P AND A []
CASING/CEMENT JOB []
OTHER: NAME CHANGE [X]

13. Describe proposed or completed operations. (Clearly state all pertinent details, and give pertinent dates, including estimated date of starting any proposed work). SEE RULE 19.15.7.14 NMAC. For Multiple Completions: Attach wellbore diagram of proposed completion or recompletion.

BTA OIL PRODUCERS LLC RESPECTFULLY REQUESTS THE FOLLOWING NAME CHANGES TO THE ORIGINAL APD AS APPROVED.
ORIGINAL APD NAME: SOUTH RIDGE 8030 2-11 STATE #001H
NEW APD NAME: SOUTH RIDGE 8030 2-11 STATE COM #001H

Spud Date: 2/23/2020

Rig Release Date: 5/17/2020

I hereby certify that the information above is true and complete to the best of my knowledge and belief.

SIGNATURE Sammy Hajar TITLE Regulatory Analyst DATE 8/18/2021

Type or print name Sammy Hajar E-mail address: SHAJAR@BTAOIL.COM PHONE: 432-682-3753

For State Use Only

APPROVED BY: TITLE DATE

Conditions of Approval (if any):

DISTRICT I
1625 N. French Dr., Hobbs, NM 88240
Phone: (575) 393-6161 Fax: (575) 393-0720
DISTRICT II
811 S. First St., Artesia, NM 88210
Phone: (575) 748-1283 Fax: (575) 748-9720
DISTRICT III
1000 Rio Brazos Road, Aztec, NM 87410
Phone: (505) 334-6178 Fax: (505) 334-6170
DISTRICT IV
1220 S. St. Francis Dr., Santa Fe, NM 87505
Phone: (505) 476-3460 Fax: (505) 476-3462

State of New Mexico
Energy, Minerals & Natural Resources Department
OIL CONSERVATION DIVISION
1220 South St. Francis Dr.
Santa Fe, New Mexico 87505

Form C-102

Revised August 1, 2011

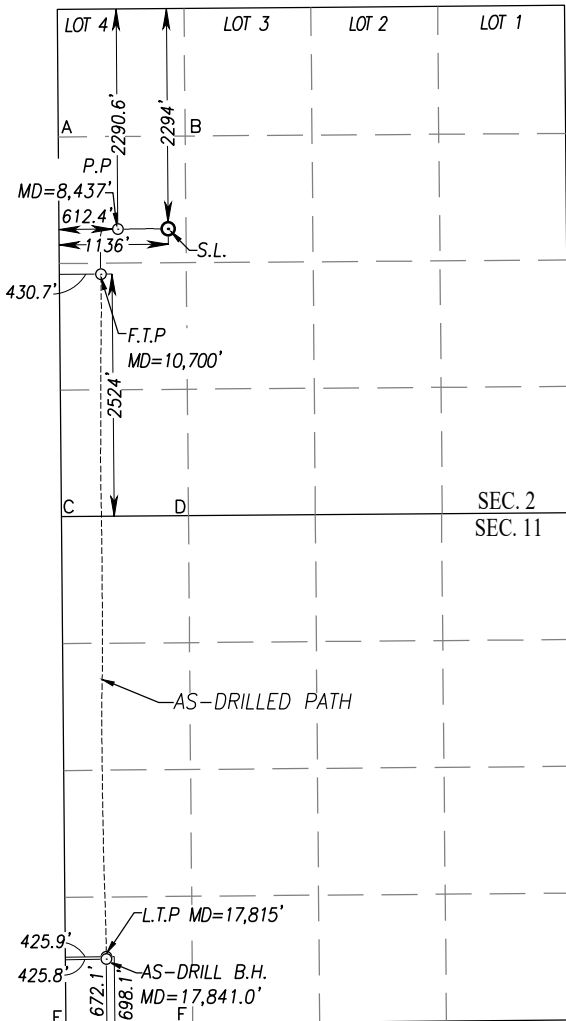
Submit one copy to appropriate
District Office

AMENDED REPORT

WELL LOCATION AND ACREAGE DEDICATION PLAT

API Number 30-025-46059		Pool Code 97293		Pool Name OJO CHISO; BONE SPRING, SOUTH					
Property Code 352655		Property Name SOUTH RIDGE 8030 2-11 STATE COM						Well Number 1H	
OGRID No. 260297		Operator Name BTA OIL PRODUCERS, LLC						Elevation 3388'	
Surface Location									
UL or lot No. E	Section 2	Township 23-S	Range 34-E	Lot Idn	Feet from the 2294	North/South line NORTH	Feet from the 1136	East/West line WEST	County LEA
As-Drilled Bottom Hole Location If Different From Surface									
UL or lot No. M	Section 11	Township 23-S	Range 34-E	Lot Idn	Feet from the 672.1	North/South line SOUTH	Feet from the 425.8	East/West line WEST	County LEA
Penetration Point Location									
UL or lot No. E	Section 2	Township 23-S	Range 34-E	Lot Idn	Feet from the 2290.6	North/South line NORTH	Feet from the 612.4	East/West line WEST	County LEA
Dedicated Acres 240		Joint or Infill		Consolidation Code		Order No.			

NO ALLOWABLE WILL BE ASSIGNED TO THIS COMPLETION UNTIL ALL INTERESTS HAVE BEEN CONSOLIDATED OR A NON-STANDARD UNIT HAS BEEN APPROVED BY THE DIVISION



SCALE: 1"=2000'

<p>GEODETIC COORDINATES NAD 83 NME SURFACE LOCATION Y= 486597.5 N X= 815479.8 E LAT.=32.334606° N LONG.=103.445746° W</p> <p>PENETRATION POINT NAD 83 NME Y= 486596.5 N X= 814956.4 E LAT.=32.334615° N LONG.=103.447441° W</p> <p>FIRST TAKE POINT NAD 83 NME Y= 486126.5 N X= 814778.6 E LAT.=32.333327° N LONG.=103.448029° W</p> <p>AS-DRILLED BOTTOM HOLE LOCATION NAD 83 NME Y= 478991.3 N X= 814836.4 E LAT.=32.313715° N LONG.=103.448032° W</p>	<p>GEODETIC COORDINATES NAD 27 NME SURFACE LOCATION Y= 486537.4 N X= 774296.2 E LAT.=32.334482° N LONG.=103.445268° W</p> <p>PENETRATION POINT NAD 27 NME Y= 486536.4 N X= 773772.8 E LAT.=32.334491° N LONG.=103.446963° W</p> <p>FIRST TAKE POINT NAD 27 NME Y= 486066.5 N X= 773595.0 E LAT.=32.333203° N LONG.=103.447551° W</p> <p>CORNER COORDINATES TABLE NAD 27 NME A - Y= 487494.5 N, X= 773152.7 E B - Y= 487503.7 N, X= 774473.8 E C - Y= 483539.8 N, X= 773186.3 E D - Y= 483549.8 N, X= 774508.0 E E - Y= 478255.9 N, X= 773233.1 E F - Y= 478267.0 N, X= 774553.5 E</p> <p>CORNER COORDINATES TABLE NAD 83 NME A - Y= 487554.6 N, X= 814336.3 E B - Y= 487563.8 N, X= 815657.4 E C - Y= 483599.8 N, X= 814370.0 E D - Y= 483609.8 N, X= 815691.7 E E - Y= 478315.7 N, X= 814416.9 E F - Y= 478326.8 N, X= 815737.3 E</p> <p>LAST TAKE POINT NAD 83 NME Y= 479017.3 N X= 814836.2 E LAT.=32.313786° N LONG.=103.448032° W</p> <p>AS-DRILLED BOTTOM HOLE LOCATION NAD 27 NME Y= 478931.4 N X= 773652.6 E LAT.=32.313590° N LONG.=103.447555° W</p>
--	--

OPERATOR CERTIFICATION
I hereby certify that the information herein is true and complete to the best of my knowledge and belief, and that this organization either owns a working interest or unleased mineral interest in the land including the proposed bottom hole location or has a right to drill this well at this location pursuant to a contract with an owner of such mineral or working interest, or to a voluntary pooling agreement or a compulsory pooling order heretofore entered by the division.

Sammy Hajar 8/18/2021
Signature Date

Sammy Hajar
Printed Name

SHAJAR@btaoil.com
E-mail Address

SURVEYOR CERTIFICATION
I hereby certify that the well location shown on this plat was plotted from field notes of actual surveys made by me or under my supervision, and that the same is true and correct to the best of my belief.

RONALD J. EIDSON
REGISTERED PROFESSIONAL SURVEYOR
JANUARY 30, 2020

Date of Survey: **12/16/2020**
Signature & Seal of Professional Surveyor: **Ronald J. Eidson**

Certificate Number: Gary G. Eidson 12641
Ronald J. Eidson 3239

ACK REL. W.O.:20110054 JWSC W.O.: 20.13.0551

District I
 1625 N. French Dr., Hobbs, NM 88240
 Phone:(575) 393-6161 Fax:(575) 393-0720

District II
 811 S. First St., Artesia, NM 88210
 Phone:(575) 748-1283 Fax:(575) 748-9720

District III
 1000 Rio Brazos Rd., Aztec, NM 87410
 Phone:(505) 334-6178 Fax:(505) 334-6170

District IV
 1220 S. St Francis Dr., Santa Fe, NM 87505
 Phone:(505) 476-3470 Fax:(505) 476-3462

State of New Mexico
Energy, Minerals and Natural Resources
Oil Conservation Division
1220 S. St Francis Dr.
Santa Fe, NM 87505

CONDITIONS
 Action 42831

CONDITIONS

Operator: BTA OIL PRODUCERS, LLC 104 S Pecos Midland, TX 79701	OGRID: 260297
	Action Number: 42831
	Action Type: [C-103] NOI Change of Plans (C-103A)

CONDITIONS

Created By	Condition	Condition Date
pkautz	None	9/21/2021