

<b>Well Name:</b> FRISBEE BIF FEDERAL COM	<b>Well Location:</b> T13S / R27E / SEC 33 / SESE /	<b>County or Parish/State:</b> CHAVES / NM
<b>Well Number:</b> 1H	<b>Type of Well:</b> CONVENTIONAL GAS WELL	<b>Allottee or Tribe Name:</b>
<b>Lease Number:</b> NMNM96205	<b>Unit or CA Name:</b>	<b>Unit or CA Number:</b>
<b>US Well Number:</b> 300056381000S1	<b>Well Status:</b> Abandoned	<b>Operator:</b> EOG RESOURCES INCORPORATED

Accepted for record – NMOCD gc 10/22/2021

Subsequent Report

**Sundry ID:** 2637971

<b>Type of Submission:</b> Subsequent Report	<b>Type of Action:</b> Plug and Abandonment
<b>Date Sundry Submitted:</b> 10/11/2021	<b>Time Sundry Submitted:</b> 08:51
<b>Date Operation Actually Began:</b> 09/01/2021	

**Actual Procedure:** Please see attached subsequent P&A. Thank you.

SR Attachments

**Actual Procedure**

Frisbee\_BIF\_Federal\_Com\_1H\_10\_8\_21\_20211011084206.pdf

<b>Well Name:</b> FRISBEE BIF FEDERAL COM	<b>Well Location:</b> T13S / R27E / SEC 33 / SESE /	<b>County or Parish/State:</b> CHAVES / NM
<b>Well Number:</b> 1H	<b>Type of Well:</b> CONVENTIONAL GAS WELL	<b>Allottee or Tribe Name:</b>
<b>Lease Number:</b> NMNM96205	<b>Unit or CA Name:</b>	<b>Unit or CA Number:</b>
<b>US Well Number:</b> 300056381000S1	<b>Well Status:</b> Abandoned	<b>Operator:</b> EOG RESOURCES INCORPORATED

Operator Certification

I certify that the foregoing is true and correct. Title 18 U.S.C. Section 1001 and Title 43 U.S.C. Section 1212, make it a crime for any person knowingly and willfully to make to any department or agency of the United States any false, fictitious or fraudulent statements or representations as to any matter within its jurisdiction. Electronic submission of Sundry Notices through this system satisfies regulations requiring a submission of Form 3160-5 or a Sundry Notice.

<b>Operator Electronic Signature:</b> TINA HUERTA	<b>Signed on:</b> OCT 11, 2021 08:42 AM
<b>Name:</b> EOG RESOURCES INCORPORATED	
<b>Title:</b> Regulatory Specialist	
<b>Street Address:</b> 104 SOUTH FOURTH STREET	
<b>City:</b> Artesia	<b>State:</b> NM
<b>Phone:</b> (575) 748-4168	
<b>Email address:</b> tina_huerta@eogresources.com	

Field Representative

<b>Representative Name:</b>		
<b>Street Address:</b>		
<b>City:</b>	<b>State:</b>	<b>Zip:</b>
<b>Phone:</b>		
<b>Email address:</b>		

BLM Point of Contact

<b>BLM POC Name:</b> JENNIFER SANCHEZ	<b>BLM POC Title:</b> Petroleum Engineer
<b>BLM POC Phone:</b> 5756270237	<b>BLM POC Email Address:</b> j1sanchez@blm.gov
<b>Disposition:</b> Accepted	<b>Disposition Date:</b> 10/12/2021
<b>Signature:</b> Jennifer Sanchez	

**Frisbee BIF Federal Com 1H – Sub P&A**  
**30-005-63810**  
**P-33-13S-27E**

9/1/21 - MIRU and NU BOP. Set a CIBP at 5900', tagged. Pressure tested to 500 psi, good. Spotted 30 sx Class C cement on top of CIBP to 5419', tagged.

9/3/21 – Spotted a 25 sx Class C cement plug from 4867'-4488' calc TOC. Perforated at 2800'. Attempted to establish injection rate. Pressured up to 1000 psi for 15 min, good. Contacted Kevin Bussell with BLM-Roswell and he ok'd drop down 50' and spot by perms. Spotted a 40 sx Class C cement plug from 2850'-2207', tagged. Tag ok'd by Kevin Bussell with BLM-Roswell.

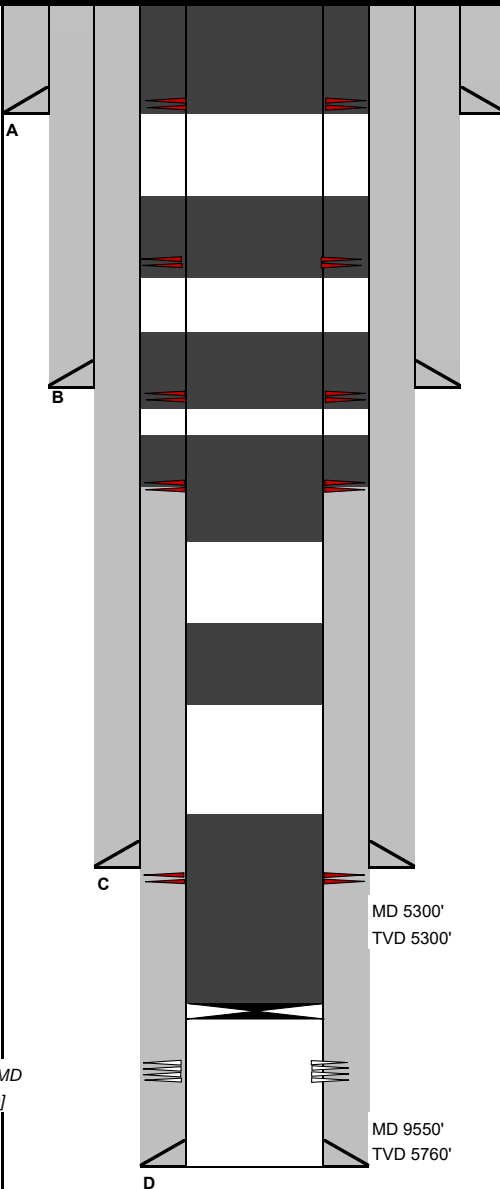
9/7/21 – Perforated at 1550'. Squeezed with 70 sx Class C cement from 1550'-1040', tagged. Witnessed and Ok'd to combine plugs by Kevin Bussell with BLM-Roswell. Perforated at 976'. Squeezed with 65 sx Class C cement from 976'-535', tagged. Ok'd to combine plugs by Kevin Bussell with BLM-Roswell.

9/8/21 – Perforated at 485'. Could not establish injection rate. Re-perforated at 485'. Squeezed with 70 sx Class C cement from 480' and circulated up to surface. Visual cement to surface.

9/30/21 - Cut off wellhead. Installed dry hole marker as per BLM. Cover cellar and cut off anchors. **WELL IS PLUGGED AND ABANDONED.**

Diagram illustrating the wellbore structure and perforations:

- Plug 6
- Plug 5
- Plug 4
- Plug 3  
TOC ~2750' by CBL
- Plug 2
- KOP ~5300'
- Plug 1
- Wolfcamp Perfs: 6000' - 9494'  
[~5760' TVD]



PBTD:		MD
TD:	9,550	MD

API:	30-005-63810
GL:	3475
KB:	3490

#	HOLE SIZE	SIZE	WGHT	GRADE	Top	Bottom	Sx Cmt	Circ/TOC	TOC Method
A	17 1/2	13 3/8	48	H-40	0	430	520	Circ	
B	12 1/4	9 5/8	36	J-55	0	1,500	700	Circ	
C	8 3/4	7	26	J-55	0	5,805	750	Circ	
D	6 3/4	4 1/2	11.6,13.5	P-110	0	9,550	305	2750	CBL

	Formation	Top		Formation	Top		Formation	Top	
	Queen	567		Yeso	2543		Canyon	6814	
	Penrose	670		Tubb	3960		Strawn	6958	
	Grayburg	890		Abo	4755		Atoka	7124	
	San Andres	1183		Wolfcamp	5724		Chester	7224	
	Glorieta	2428		Cisco	6198		Mississippian	7268	

#	Joints	Description	Length	OD	ID	Grade	Wt (lb/ft):	Top (ftKB):	Btm (ftKB):
		2 3/8 tubing						5,245	

#	SX	Class	Top	Bottom	Tag	Notes	
1	30	C	5419	5900	Y	CIBP	
2	25	C	4488	4867	N		
3	40	C	2207	2850	Y	Perforate	
4	70	C	1040	1550	Y	Perforate	
5	65	C	535	976	Y	Perforate	
6	70	C	0	480	N	Perforate	

[illegible]

1st Plug inclination begins at 5900' [ $\sim 76^\circ$ ] and ends at 5511 [ $\sim 27^\circ$ ]

10/12/21

**District I**  
1625 N. French Dr., Hobbs, NM 88240  
Phone:(575) 393-6161 Fax:(575) 393-0720  
**District II**  
811 S. First St., Artesia, NM 88210  
Phone:(575) 748-1283 Fax:(575) 748-9720  
**District III**  
1000 Rio Brazos Rd., Aztec, NM 87410  
Phone:(505) 334-6178 Fax:(505) 334-6170  
**District IV**  
1220 S. St Francis Dr., Santa Fe, NM 87505  
Phone:(505) 476-3470 Fax:(505) 476-3462

**State of New Mexico**  
**Energy, Minerals and Natural Resources**  
**Oil Conservation Division**  
**1220 S. St Francis Dr.**  
**Santa Fe, NM 87505**

CONDITIONS  
  
Action 55534

CONDITIONS

Operator: EOG RESOURCES INC P.O. Box 2267 Midland, TX 79702	OGRID: 7377
	Action Number: 55534
	Action Type: [C-103] Sub. Plugging (C-103P)

CONDITIONS

Created By	Condition	Condition Date
gcordero	None	10/22/2021