

District I
1625 N. French Dr., Hobbs, NM 88240
District II
811 S. First St., Artesia, NM 88210
District III
1000 Rio Brazos Rd., Aztec, NM 87410
District IV
1220 S. St. Francis Dr., Santa Fe, NM 87505

State of New Mexico
Energy, Minerals & Natural Resources
Oil Conservation Division
1220 South St. Francis Dr.
Santa Fe, NM 87505

Form C-104
Revised August 1, 2011

Submit one copy to appropriate District Office

AMENDED REPORT

I. REQUEST FOR ALLOWABLE AND AUTHORIZATION TO TRANSPORT

¹ Operator name and Address Devon Energy Production Company, L.P. 333 West Sheridan, Oklahoma City, OK 73102		² OGRID Number 6137
		³ Reason for Filing Code/ Effective Date NW / 8/18/21
⁴ API Number 30-025-48486	⁵ Pool Name ; WC-025 G-08 S243217P; UPR WOLFCAMP	⁶ Pool Code 98248
⁷ Property Code 328298	⁸ Property Name CATTY SHACK 6 7 FEDERAL COM	⁹ Well Number 711H

II. ¹⁰ Surface Location

Ul or lot no.	Section	Township	Range	Lot Idn	Feet from the	North/South line	Feet from the	East/West line	County
4	31	23S	32E		150	South	800	West	EDDY

¹¹ Bottom Hole Location

UL or lot no.	Section	Township	Range	Lot Idn	Feet from the	North/South line	Feet from the	East/West line	County
04	7	24S	32E		91	South	622	West	EDDY
¹² Lse Code F	¹³ Producing Method Code	¹⁴ Gas Connection Date 8/18/21	¹⁵ C-129 Permit Number	¹⁶ C-129 Effective Date	¹⁷ C-129 Expiration Date				

III. Oil and Gas Transporters

¹⁸ Transporter OGRID	¹⁹ Transporter Name and Address	²⁰ O/G/W
036785	DCP Midstream P.O. Box 50020 Midland, TX 79710-0020	Gas
320009	EnLink Midstream Operating, LP 2501 Cedar Springs Road, Suite 100, Dallas, TX 75201	Oil

IV. Well Completion Data

²¹ Spud Date	²² Ready Date	²³ TD	²⁴ PBDT	²⁵ Perforations	²⁶ DHC, MC
5/4/21	8/18/21	22815	22789.4 MD 12129.6 TVD	12437 - 22787	
²⁷ Hole Size	²⁸ Casing & Tubing Size	²⁹ Depth Set	³⁰ Sacks Cement		
17.5	13.375	999.2	630		
9.625	8 5/8	11563.1	2295		
7.875	5.5	22801.2	2800		
Tubing: Tubing set: N/A		0			

V. Well Test Data

³¹ Date New Oil	³² Gas Delivery Date	³³ Test Date	³⁴ Test Length	³⁵ Tbg. Pressure	³⁶ Csg. Pressure
8/31/21	8/31/21	8/31/21	24 hrs	psi	psi
³⁷ Choke Size	³⁸ Oil	³⁹ Water	⁴⁰ Gas	⁴¹ Test Method	
	3190 bbl	4464 bbl	8689 mcf		

⁴² I hereby certify that the rules of the Oil Conservation Division have been complied with and that the information given above is true and complete to the best of my knowledge and belief. Signature: <i>Jenny Harms</i> Printed name: Jenny Harms Title: Regulatory Specialist E-mail Address: jenny.harms@dnv.com Date: 9/21/2021 Phone: 405-552-6560	OIL CONSERVATION DIVISION
	Approved by: <i>PATRICIA MARTINEZ</i>
	Title: <i>PETROLEUM SPECIALIST</i>
	Approval Date: <i>10/27/2021</i>

District I
1625 N. French Dr., Hobbs, NM 88240
Phone: (575) 393-6161 Fax: (575) 393-0720
District II
811 S. First St., Artesia, NM 88210
Phone: (575) 748-1283 Fax: (575) 748-9720
District III
1000 Rio Brazos Road, Aztec, NM 87410
Phone: (505) 334-6178 Fax: (505) 334-6170
District IV
1220 S. St. Francis Dr., Santa Fe, NM 87505
Phone: (505) 476-3460 Fax: (505) 476-3462

State of New Mexico
Energy, Minerals & Natural Resources Department
OIL CONSERVATION DIVISION
1220 South St. Francis Dr.
Santa Fe, NM 87505

Form C-102
Revised August 1, 2011
Submit one copy to appropriate
District Office
 AMENDED REPORT
AS-DRILLED

WELL LOCATION AND ACREAGE DEDICATION PLAT

¹ API Number 30-025-48486		² Pool Code 98248		³ Pool Name WC-025 G-08 S243217P; UPR WOLFCAMP	
⁴ Property Code 328298		⁵ Property Name CATTY SHACK 6-7 FED COM			⁶ Well Number 711H
⁷ OGRID No. 6137		⁸ Operator Name DEVON ENERGY PRODUCTION COMPANY, L.P.			⁹ Elevation 3542.8

¹⁰ Surface Location

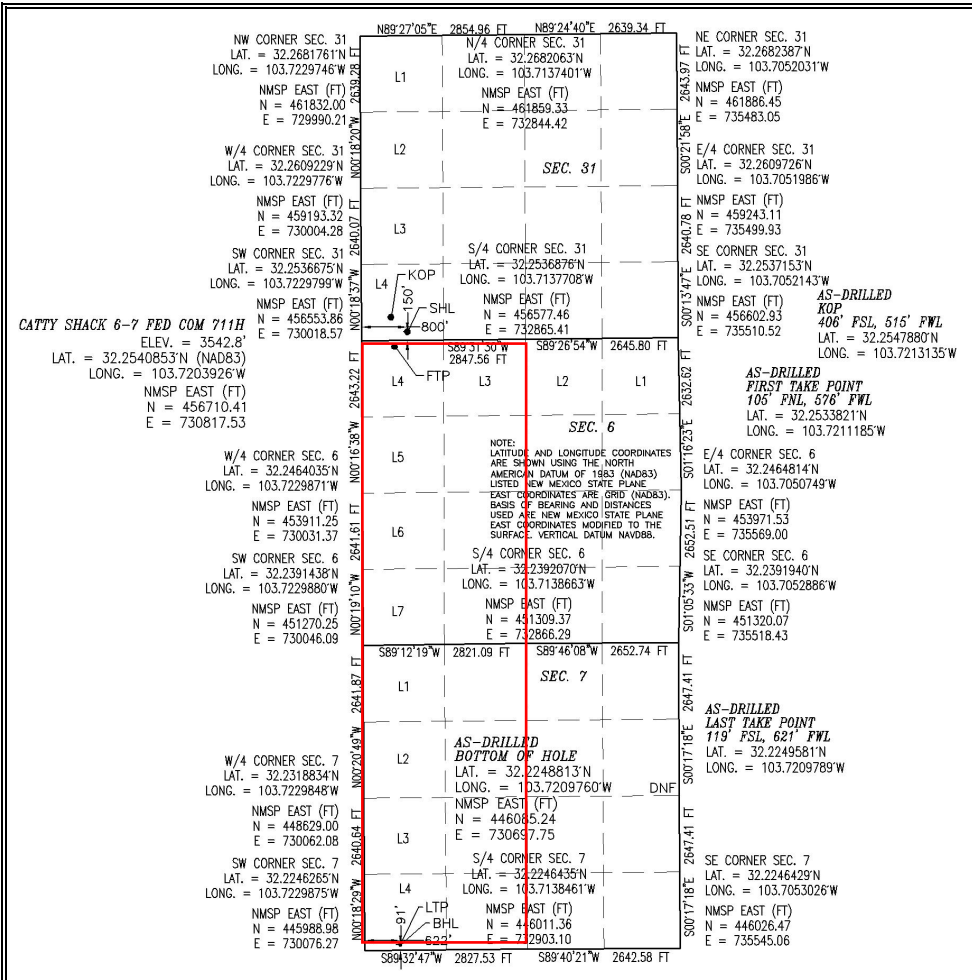
UL or lot no.	Section	Township	Range	Lot Idn	Feet from the	North/South line	Feet from the	East/West line	County
4	31	23 S	32 E		150	SOUTH	800	WEST	LEA

¹¹ Bottom Hole Location If Different From Surface

UL or lot no.	Section	Township	Range	Lot Idn	Feet from the	North/South line	Feet from the	East/West line	County
4	7	24 S	32 E		91	SOUTH	622	WEST	LEA

¹² Dedicated Acres 685.66	¹³ Joint or Infill	¹⁴ Consolidation Code	¹⁵ Order No.
---	-------------------------------	----------------------------------	-------------------------

No allowable will be assigned to this completion until all interests have been consolidated or a non-standard unit has been approved by the division.



17 OPERATOR CERTIFICATION
I hereby certify that the information contained herein is true and complete to the best of my knowledge and belief, and that this organization either owns a working interest or unleased mineral interest in the land including the proposed bottom hole location or has a right to drill this well at this location pursuant to a contract with an owner of such a mineral or working interest, or to a voluntary pooling agreement or a compulsory pooling order heretofore entered by the division.

Signature: *Jenny Harms* Date: 9-21-2021
Printed Name: JENNY HARMS
E-mail Address: JENNY.HARMS@DVN.COM

18 SURVEYOR CERTIFICATION
I hereby certify that the well location shown on this plat was plotted from field notes of actual surveys made by me or under my supervision, and that the same is true and correct to the best of my belief.

Date of Survey: AUGUST 26, 2021

Signature and Seal of Professional Surveyor: *William F. Jaramila*
Certificate Number: WILLIAM F. JARAMILA, PLS 12797, REGISTERED PROFESSIONAL SURVEYOR, NO. 8283A

Intent As Drilled

API #		
Operator Name: DEVON ENERGY PRODUCTION CO., L.P.	Property Name: CATTY SHACK 6-7 FED COM	Well Number 711H

Kick Off Point (KOP)

UL	Section 31	Township 23S	Range 32E	Lot 4	Feet 406	From N/S SOUTH	Feet 515	From E/W WEST	County LEA
Latitude 32.2547880					Longitude 103.7213135			NAD 83	

First Take Point (FTP)

UL	Section 6	Township 24S	Range 32E	Lot 4	Feet 105	From N/S NORTH	Feet 576	From E/W WEST	County LEA
Latitude 32.2533821					Longitude 103.7211185			NAD 83	

Last Take Point (LTP)

UL	Section 7	Township 24S	Range 32E	Lot 4	Feet 119	From N/S SOUTH	Feet 621	From E/W WEST	County LEA
Latitude 32.2249581					Longitude 103.7209789			NAD 83	

Is this well the defining well for the Horizontal Spacing Unit? NO

Is this well an infill well? YES

If infill is yes please provide API if available, Operator Name and well number for Defining well for Horizontal Spacing Unit.

API #		
Operator Name:	Property Name:	Well Number

KZ 06/29/2018



Devon Energy

Lea County, NM (NAD83)

Catty Shack 6-7 Fed Com

Catty Shack 6-7 Fed Com 711H

OH

Design: OH

Survey Report - Geographic

14 June, 2021





Total Directional Services

Survey Report - Geographic



Company:	Devon Energy	Local Co-ordinate Reference:	Well Catty Shack 6-7 Fed Com 711H
Project:	Lea County, NM (NAD83)	TVD Reference:	3542.8' GE + 24.5' KB @ 3567.30usft
Site:	Catty Shack 6-7 Fed Com	MD Reference:	3542.8' GE + 24.5' KB @ 3567.30usft
Well:	Catty Shack 6-7 Fed Com 711H	North Reference:	Grid
Wellbore:	OH	Survey Calculation Method:	Minimum Curvature
Design:	OH	Database:	EDM 5000.15 Single User Db

Project	Lea County, NM (NAD83)		
Map System:	US State Plane 1983	System Datum:	Mean Sea Level
Geo Datum:	North American Datum 1983		
Map Zone:	New Mexico Eastern Zone		

Site	Catty Shack 6-7 Fed Com				
Site Position:		Northing:	456,886.91 usft	Latitude:	32.254549
From:	Map	Easting:	732,211.36 usft	Longitude:	-103.715881
Position Uncertainty:	0.00 usft	Slot Radius:	13-3/16 "	Grid Convergence:	0.33 °

Well	Catty Shack 6-7 Fed Com 711H					
Well Position	+N/-S	0.00 usft	Northing:	456,710.41 usft	Latitude:	32.254085
	+E/-W	0.00 usft	Easting:	730,817.53 usft	Longitude:	-103.720393
Position Uncertainty		0.00 usft	Wellhead Elevation:	usft	Ground Level:	3,542.80 usft

Wellbore	OH				
Magnetics	Model Name	Sample Date	Declination (°)	Dip Angle (°)	Field Strength (nT)
	IGRF2020	5/6/2021	6.63	59.91	47,506.86208967

Design	OH				
Audit Notes:					
Version:	1.0	Phase:	ACTUAL	Tie On Depth:	0.00
Vertical Section:	Depth From (TVD) (usft)	+N/-S (usft)	+E/-W (usft)	Direction (°)	
	0.00	0.00	0.00	180.65	

Survey Program	Date	6/14/2021			
From (usft)	To (usft)	Survey (Wellbore)	Tool Name	Description	
177.00	933.00	Survey #1 - Surface MWD (OH)	OWSG (Rev2) MWD	OWSG MWD - Standard	
1,055.00	22,815.00	Survey #2 - MWD (OH)	OWSG (Rev2) MWD	OWSG MWD - Standard	

Survey										
Measured Depth (usft)	Inclination (°)	Azimuth (°)	Vertical Depth (usft)	+N/-S (usft)	+E/-W (usft)	Map Northing (usft)	Map Easting (usft)	Latitude	Longitude	
0.00	0.00	0.00	0.00	0.00	0.00	456,710.41	730,817.53	32.254085	-103.720393	
177.00	0.20	152.10	177.00	-0.27	0.14	456,710.14	730,817.67	32.254085	-103.720392	
267.00	0.20	156.20	267.00	-0.56	0.28	456,709.85	730,817.81	32.254084	-103.720392	
357.00	0.30	160.20	357.00	-0.92	0.42	456,709.49	730,817.95	32.254083	-103.720392	
447.00	0.30	178.60	447.00	-1.38	0.51	456,709.03	730,818.04	32.254082	-103.720391	
537.00	0.40	181.00	537.00	-1.93	0.51	456,708.48	730,818.04	32.254080	-103.720391	
628.00	0.50	191.90	627.99	-2.63	0.42	456,707.78	730,817.95	32.254078	-103.720392	
719.00	0.30	183.30	718.99	-3.26	0.33	456,707.15	730,817.85	32.254076	-103.720392	
811.00	0.50	196.60	810.99	-3.89	0.20	456,706.52	730,817.73	32.254075	-103.720392	
902.00	0.50	196.70	901.98	-4.65	-0.03	456,705.76	730,817.50	32.254073	-103.720393	
933.00	0.60	186.30	932.98	-4.94	-0.09	456,705.47	730,817.44	32.254072	-103.720393	



Total Directional Services

Survey Report - Geographic



Company:	Devon Energy	Local Co-ordinate Reference:	Well Catty Shack 6-7 Fed Com 711H
Project:	Lea County, NM (NAD83)	TVD Reference:	3542.8' GE + 24.5' KB @ 3567.30usft
Site:	Catty Shack 6-7 Fed Com	MD Reference:	3542.8' GE + 24.5' KB @ 3567.30usft
Well:	Catty Shack 6-7 Fed Com 711H	North Reference:	Grid
Wellbore:	OH	Survey Calculation Method:	Minimum Curvature
Design:	OH	Database:	EDM 5000.15 Single User Db

Survey										
Measured Depth (usft)	Inclination (°)	Azimuth (°)	Vertical Depth (usft)	+N/-S (usft)	+E/-W (usft)	Map Northing (usft)	Map Easting (usft)	Latitude	Longitude	
1,055.00	0.30	163.70	1,054.98	-5.88	-0.07	456,704.53	730,817.46	32.254069	-103.720393	
1,146.00	0.30	136.20	1,145.98	-6.28	0.17	456,704.13	730,817.69	32.254068	-103.720392	
1,236.00	0.80	299.40	1,235.98	-6.14	-0.22	456,704.27	730,817.31	32.254069	-103.720394	
1,326.00	2.20	301.20	1,325.94	-4.94	-2.24	456,705.47	730,815.28	32.254072	-103.720400	
1,416.00	3.50	308.20	1,415.83	-2.34	-5.88	456,708.07	730,811.65	32.254079	-103.720412	
1,510.00	3.40	311.50	1,509.66	1.28	-10.22	456,711.69	730,807.30	32.254089	-103.720426	
1,605.00	4.90	315.10	1,604.41	6.02	-15.20	456,716.43	730,802.33	32.254102	-103.720442	
1,699.00	5.40	318.60	1,698.03	12.18	-20.96	456,722.59	730,796.57	32.254119	-103.720460	
1,794.00	5.40	319.70	1,792.61	18.94	-26.80	456,729.35	730,790.72	32.254138	-103.720479	
1,888.00	5.40	321.10	1,886.19	25.76	-32.44	456,736.17	730,785.09	32.254157	-103.720497	
1,983.00	5.40	320.90	1,980.77	32.71	-38.07	456,743.12	730,779.46	32.254176	-103.720515	
2,078.00	5.40	320.80	2,075.35	39.64	-43.71	456,750.05	730,773.81	32.254195	-103.720534	
2,173.00	5.40	321.00	2,169.92	46.58	-49.35	456,756.99	730,768.18	32.254214	-103.720552	
2,267.00	5.50	320.60	2,263.50	53.50	-54.99	456,763.91	730,762.53	32.254233	-103.720570	
2,361.00	5.70	320.50	2,357.05	60.58	-60.82	456,770.99	730,756.70	32.254253	-103.720589	
2,455.00	5.80	320.30	2,450.58	67.83	-66.82	456,778.25	730,750.70	32.254273	-103.720608	
2,549.00	5.50	321.10	2,544.12	75.00	-72.69	456,785.41	730,744.84	32.254293	-103.720627	
2,644.00	5.40	323.10	2,638.69	82.11	-78.23	456,792.52	730,739.30	32.254312	-103.720644	
2,738.00	5.20	325.60	2,732.29	89.16	-83.29	456,799.57	730,734.23	32.254332	-103.720661	
2,833.00	5.30	320.00	2,826.89	96.08	-88.55	456,806.49	730,728.98	32.254351	-103.720678	
2,927.00	5.20	318.00	2,920.50	102.57	-94.19	456,812.98	730,723.34	32.254369	-103.720696	
3,021.00	5.10	318.60	3,014.12	108.87	-99.80	456,819.28	730,717.73	32.254386	-103.720714	
3,116.00	4.50	304.40	3,108.79	114.14	-105.67	456,824.55	730,711.86	32.254401	-103.720733	
3,210.00	4.60	301.00	3,202.49	118.17	-111.94	456,828.58	730,705.59	32.254412	-103.720753	
3,304.00	4.70	312.80	3,296.19	122.72	-118.00	456,833.13	730,699.53	32.254425	-103.720772	
3,399.00	4.50	317.40	3,390.88	128.11	-123.38	456,838.52	730,694.15	32.254439	-103.720790	
3,493.00	4.30	318.90	3,484.60	133.48	-128.19	456,843.89	730,689.34	32.254454	-103.720805	
3,587.00	4.10	302.00	3,578.35	137.92	-133.36	456,848.33	730,684.17	32.254467	-103.720822	
3,681.00	4.20	291.30	3,672.11	140.95	-139.41	456,851.36	730,678.11	32.254475	-103.720841	
3,775.00	3.80	283.00	3,765.88	142.90	-145.65	456,853.31	730,671.87	32.254480	-103.720861	
3,869.00	3.10	270.70	3,859.71	143.63	-151.23	456,854.04	730,666.30	32.254483	-103.720879	
3,963.00	3.00	269.80	3,953.58	143.66	-156.23	456,854.07	730,661.29	32.254483	-103.720896	
4,058.00	4.20	295.80	4,048.39	145.16	-161.85	456,855.57	730,655.68	32.254487	-103.720914	
4,151.00	4.00	296.30	4,141.16	148.08	-167.83	456,858.49	730,649.70	32.254495	-103.720933	
4,245.00	3.20	289.10	4,234.97	150.39	-173.24	456,860.80	730,644.28	32.254501	-103.720951	
4,339.00	2.40	279.60	4,328.86	151.58	-177.66	456,861.99	730,639.86	32.254505	-103.720965	
4,433.00	3.40	300.60	4,422.74	153.33	-182.00	456,863.74	730,635.52	32.254510	-103.720979	
4,527.00	5.50	313.00	4,516.45	157.82	-187.70	456,868.23	730,629.83	32.254522	-103.720997	
4,621.00	6.20	315.00	4,609.96	164.48	-194.58	456,874.89	730,622.94	32.254541	-103.721019	
4,716.00	6.30	312.40	4,704.40	171.62	-202.06	456,882.03	730,615.47	32.254560	-103.721043	
4,810.00	6.20	315.10	4,797.84	178.69	-209.45	456,889.10	730,608.08	32.254580	-103.721067	
4,904.00	5.90	325.30	4,891.32	186.26	-215.78	456,896.67	730,601.74	32.254601	-103.721087	
4,999.00	5.80	323.40	4,985.82	194.13	-221.43	456,904.54	730,596.10	32.254622	-103.721106	
5,093.00	5.70	322.80	5,079.35	201.66	-227.08	456,912.07	730,590.45	32.254643	-103.721124	
5,187.00	5.90	320.80	5,172.87	209.12	-232.96	456,919.53	730,584.57	32.254664	-103.721143	
5,281.00	6.20	323.10	5,266.35	216.93	-239.06	456,927.34	730,578.47	32.254685	-103.721162	
5,375.00	7.20	331.90	5,359.71	226.18	-244.88	456,936.59	730,572.65	32.254711	-103.721181	
5,470.00	6.20	339.60	5,454.06	236.24	-249.47	456,946.65	730,568.05	32.254739	-103.721195	
5,564.00	4.50	350.70	5,547.65	244.64	-251.84	456,955.05	730,565.69	32.254762	-103.721203	
5,659.00	4.10	354.40	5,642.38	251.70	-252.77	456,962.11	730,564.76	32.254781	-103.721206	
5,753.00	4.00	351.60	5,736.14	258.29	-253.58	456,968.70	730,563.95	32.254799	-103.721208	
5,848.00	2.60	7.80	5,830.99	263.70	-253.77	456,974.11	730,563.76	32.254814	-103.721209	
5,942.00	2.20	23.50	5,924.91	267.47	-252.76	456,977.88	730,564.77	32.254825	-103.721206	
6,036.00	2.10	21.40	6,018.84	270.72	-251.41	456,981.13	730,566.11	32.254833	-103.721201	
6,131.00	2.10	25.10	6,113.78	273.92	-250.04	456,984.33	730,567.49	32.254842	-103.721197	



Total Directional Services

Survey Report - Geographic



Company:	Devon Energy	Local Co-ordinate Reference:	Well Catty Shack 6-7 Fed Com 711H
Project:	Lea County, NM (NAD83)	TVD Reference:	3542.8' GE + 24.5' KB @ 3567.30usft
Site:	Catty Shack 6-7 Fed Com	MD Reference:	3542.8' GE + 24.5' KB @ 3567.30usft
Well:	Catty Shack 6-7 Fed Com 711H	North Reference:	Grid
Wellbore:	OH	Survey Calculation Method:	Minimum Curvature
Design:	OH	Database:	EDM 5000.15 Single User Db

Survey										
Measured Depth (usft)	Inclination (°)	Azimuth (°)	Vertical Depth (usft)	+N/-S (usft)	+E/-W (usft)	Map Northing (usft)	Map Easting (usft)	Latitude	Longitude	
6,225.00	1.90	24.10	6,207.72	276.90	-248.67	456,987.31	730,568.85	32.254850	-103.721192	
6,319.00	1.70	18.70	6,301.67	279.65	-247.59	456,990.06	730,569.94	32.254858	-103.721189	
6,413.00	1.50	14.80	6,395.64	282.16	-246.83	456,992.57	730,570.70	32.254865	-103.721186	
6,507.00	1.50	11.90	6,489.60	284.55	-246.26	456,994.96	730,571.27	32.254871	-103.721184	
6,601.00	1.50	11.00	6,583.57	286.96	-245.77	456,997.37	730,571.76	32.254878	-103.721183	
6,695.00	1.50	5.60	6,677.54	289.39	-245.42	456,999.80	730,572.11	32.254885	-103.721181	
6,790.00	1.10	74.40	6,772.52	290.88	-244.42	457,001.29	730,573.11	32.254889	-103.721178	
6,884.00	1.30	79.30	6,866.50	291.32	-242.50	457,001.73	730,575.03	32.254890	-103.721172	
6,978.00	1.20	75.90	6,960.48	291.75	-240.50	457,002.16	730,577.03	32.254891	-103.721165	
7,072.00	1.00	78.20	7,054.46	292.16	-238.74	457,002.57	730,578.79	32.254892	-103.721160	
7,166.00	1.00	94.50	7,148.44	292.27	-237.12	457,002.68	730,580.41	32.254892	-103.721155	
7,260.00	1.00	118.70	7,242.43	291.81	-235.58	457,002.22	730,581.94	32.254891	-103.721150	
7,355.00	0.80	118.00	7,337.42	291.10	-234.27	457,001.51	730,583.26	32.254889	-103.721145	
7,449.00	0.80	112.60	7,431.41	290.54	-233.08	457,000.95	730,584.44	32.254888	-103.721141	
7,543.00	0.80	107.80	7,525.40	290.08	-231.85	457,000.49	730,585.67	32.254886	-103.721138	
7,637.00	0.80	112.40	7,619.39	289.63	-230.62	457,000.04	730,586.90	32.254885	-103.721134	
7,732.00	0.70	118.00	7,714.38	289.11	-229.50	456,999.52	730,588.03	32.254884	-103.721130	
7,826.00	0.80	120.50	7,808.38	288.51	-228.42	456,998.92	730,589.10	32.254882	-103.721126	
7,920.00	0.50	227.20	7,902.37	287.89	-228.16	456,998.30	730,589.37	32.254880	-103.721126	
8,014.00	1.00	251.00	7,996.36	287.35	-229.24	456,997.76	730,588.29	32.254879	-103.721129	
8,109.00	1.10	250.30	8,091.35	286.77	-230.88	456,997.18	730,586.65	32.254877	-103.721134	
8,203.00	1.30	248.00	8,185.33	286.07	-232.72	456,996.48	730,584.81	32.254875	-103.721140	
8,298.00	1.30	247.60	8,280.30	285.25	-234.71	456,995.66	730,582.81	32.254873	-103.721147	
8,392.00	1.10	251.30	8,374.28	284.56	-236.55	456,994.97	730,580.97	32.254871	-103.721153	
8,487.00	1.00	255.70	8,469.27	284.06	-238.22	456,994.47	730,579.31	32.254870	-103.721158	
8,582.00	1.10	262.50	8,564.25	283.74	-239.93	456,994.15	730,577.60	32.254869	-103.721164	
8,676.00	1.10	272.30	8,658.23	283.66	-241.72	456,994.07	730,575.80	32.254869	-103.721170	
8,770.00	1.40	265.10	8,752.21	283.59	-243.77	456,994.00	730,573.76	32.254869	-103.721176	
8,865.00	1.40	239.70	8,847.18	282.91	-245.93	456,993.32	730,571.60	32.254867	-103.721183	
8,959.00	1.90	247.60	8,941.14	281.74	-248.36	456,992.15	730,569.17	32.254864	-103.721191	
9,053.00	2.20	254.80	9,035.08	280.67	-251.54	456,991.08	730,565.99	32.254861	-103.721201	
9,147.00	2.00	247.90	9,129.02	279.58	-254.80	456,989.99	730,562.72	32.254858	-103.721212	
9,242.00	2.30	252.80	9,223.95	278.39	-258.16	456,988.80	730,559.37	32.254855	-103.721223	
9,337.00	2.50	263.00	9,318.87	277.58	-262.04	456,987.99	730,555.49	32.254852	-103.721235	
9,431.00	2.60	275.30	9,412.78	277.52	-266.19	456,987.93	730,551.33	32.254852	-103.721249	
9,525.00	2.20	280.00	9,506.70	278.03	-270.09	456,988.44	730,547.43	32.254854	-103.721261	
9,619.00	2.10	279.50	9,600.63	278.63	-273.57	456,989.04	730,543.96	32.254856	-103.721273	
9,714.00	2.20	291.10	9,695.56	279.57	-276.99	456,989.98	730,540.54	32.254858	-103.721284	
9,808.00	2.30	293.40	9,789.49	280.97	-280.40	456,991.38	730,537.13	32.254862	-103.721295	
9,902.00	2.20	295.90	9,883.42	282.51	-283.76	456,992.92	730,533.77	32.254866	-103.721306	
9,996.00	2.00	287.60	9,977.36	283.79	-286.94	456,994.20	730,530.58	32.254870	-103.721316	
10,090.00	2.10	282.90	10,071.29	284.67	-290.18	456,995.08	730,527.34	32.254872	-103.721326	
10,185.00	1.00	222.00	10,166.26	284.45	-292.44	456,994.86	730,525.09	32.254872	-103.721334	
10,279.00	1.60	196.70	10,260.24	282.58	-293.36	456,992.99	730,524.16	32.254867	-103.721337	
10,373.00	1.20	161.50	10,354.21	280.39	-293.43	456,990.80	730,524.10	32.254861	-103.721337	
10,468.00	1.60	164.90	10,449.18	278.17	-292.77	456,988.58	730,524.76	32.254855	-103.721335	
10,562.00	1.50	174.90	10,543.15	275.67	-292.31	456,986.08	730,525.21	32.254848	-103.721333	
10,656.00	1.40	182.20	10,637.12	273.30	-292.25	456,983.71	730,525.28	32.254841	-103.721333	
10,751.00	1.20	202.10	10,732.10	271.22	-292.67	456,981.63	730,524.86	32.254835	-103.721335	
10,844.00	1.00	182.00	10,825.08	269.51	-293.06	456,979.92	730,524.46	32.254831	-103.721336	
10,938.00	1.20	114.80	10,919.07	268.27	-292.20	456,978.68	730,525.33	32.254827	-103.721333	
11,032.00	1.10	127.90	11,013.05	267.31	-290.59	456,977.72	730,526.93	32.254825	-103.721328	
11,126.00	1.40	143.50	11,107.02	265.83	-289.20	456,976.24	730,528.33	32.254821	-103.721323	
11,221.00	1.30	149.30	11,202.00	263.97	-287.96	456,974.38	730,529.57	32.254815	-103.721319	
11,315.00	1.60	155.40	11,295.97	261.86	-286.87	456,972.27	730,530.66	32.254810	-103.721316	



Total Directional Services

Survey Report - Geographic



Company:	Devon Energy	Local Co-ordinate Reference:	Well Catty Shack 6-7 Fed Com 711H
Project:	Lea County, NM (NAD83)	TVD Reference:	3542.8' GE + 24.5' KB @ 3567.30usft
Site:	Catty Shack 6-7 Fed Com	MD Reference:	3542.8' GE + 24.5' KB @ 3567.30usft
Well:	Catty Shack 6-7 Fed Com 711H	North Reference:	Grid
Wellbore:	OH	Survey Calculation Method:	Minimum Curvature
Design:	OH	Database:	EDM 5000.15 Single User Db

Survey										
Measured Depth (usft)	Inclination (°)	Azimuth (°)	Vertical Depth (usft)	+N/-S (usft)	+E/-W (usft)	Map Northing (usft)	Map Easting (usft)	Latitude	Longitude	
11,409.00	1.70	168.90	11,389.93	259.30	-286.05	456,969.71	730,531.48	32.254803	-103.721313	
11,506.00	2.00	183.10	11,486.88	256.20	-285.87	456,966.61	730,531.66	32.254794	-103.721313	
11,618.00	2.00	194.40	11,598.81	252.35	-286.46	456,962.76	730,531.07	32.254784	-103.721315	
KOP @ 11618' MD, 402' FSL, 514' FWL										
11,710.00	6.50	171.40	11,690.54	245.64	-286.08	456,956.05	730,531.45	32.254765	-103.721314	
11,800.00	18.30	163.90	11,778.29	226.96	-281.38	456,937.37	730,536.15	32.254714	-103.721299	
11,893.00	29.20	163.50	11,863.29	191.08	-270.86	456,901.49	730,546.67	32.254615	-103.721266	
11,984.00	39.80	170.70	11,938.21	140.89	-259.81	456,851.30	730,557.72	32.254477	-103.721231	
12,075.00	49.70	171.60	12,002.75	77.66	-250.01	456,788.07	730,567.52	32.254303	-103.721200	
12,166.00	60.80	173.80	12,054.55	3.60	-240.62	456,714.01	730,576.91	32.254099	-103.721171	
12,257.00	72.40	174.80	12,090.62	-79.36	-232.37	456,631.05	730,585.15	32.253871	-103.721146	
12,302.00	79.20	175.60	12,101.66	-122.80	-228.73	456,587.61	730,588.80	32.253751	-103.721135	
12,330.00	83.55	176.79	12,105.85	-150.42	-226.89	456,559.99	730,590.63	32.253675	-103.721130	
X Sec @ 12330' MD, 0' FNL, 573' FWL										
12,347.00	86.20	177.50	12,107.37	-167.33	-226.05	456,543.08	730,591.48	32.253629	-103.721127	
12,430.00	87.86	178.51	12,111.67	-250.16	-223.17	456,460.25	730,594.36	32.253401	-103.721119	
X FTP @ 12430' MD, 100' FNL, 577' FWL										
12,437.00	88.00	178.60	12,111.93	-257.16	-222.99	456,453.25	730,594.53	32.253382	-103.721119	
12,527.00	89.20	181.20	12,114.12	-347.12	-222.84	456,363.29	730,594.69	32.253135	-103.721120	
12,620.00	88.30	181.20	12,116.15	-440.08	-224.78	456,270.33	730,592.74	32.252879	-103.721128	
12,715.00	88.30	179.00	12,118.97	-535.03	-224.95	456,175.38	730,592.58	32.252618	-103.721130	
12,809.00	91.00	177.40	12,119.55	-628.97	-222.00	456,081.44	730,595.53	32.252360	-103.721123	
12,903.00	90.80	177.70	12,118.07	-722.87	-217.98	455,987.54	730,599.55	32.252102	-103.721111	
12,997.00	90.30	177.90	12,117.17	-816.80	-214.37	455,893.61	730,603.16	32.251844	-103.721101	
13,092.00	90.10	178.30	12,116.84	-911.74	-211.22	455,798.67	730,606.31	32.251583	-103.721093	
13,186.00	90.70	177.90	12,116.18	-1,005.69	-208.10	455,704.72	730,609.42	32.251324	-103.721085	
13,280.00	90.00	178.00	12,115.61	-1,099.63	-204.74	455,610.78	730,612.79	32.251066	-103.721075	
13,375.00	89.40	177.70	12,116.10	-1,194.56	-201.18	455,515.85	730,616.35	32.250805	-103.721066	
13,469.00	92.80	181.00	12,114.30	-1,288.51	-200.11	455,421.90	730,617.42	32.250547	-103.721064	
13,563.00	91.90	181.30	12,110.44	-1,382.41	-201.99	455,328.00	730,615.53	32.250289	-103.721072	
13,657.00	92.10	181.30	12,107.16	-1,476.33	-204.13	455,234.08	730,613.40	32.250031	-103.721080	
13,751.00	93.20	181.60	12,102.82	-1,570.20	-206.50	455,140.21	730,611.02	32.249773	-103.721090	
13,874.00	92.20	175.50	12,097.02	-1,692.96	-203.39	455,017.45	730,614.13	32.249435	-103.721082	
13,968.00	89.50	175.40	12,095.62	-1,786.65	-195.94	454,923.77	730,621.59	32.249177	-103.721060	
14,062.00	87.30	176.70	12,098.25	-1,880.38	-189.46	454,830.03	730,628.06	32.248920	-103.721040	
14,156.00	89.70	180.10	12,100.71	-1,974.29	-186.84	454,736.12	730,630.68	32.248662	-103.721034	
14,250.00	90.50	182.40	12,100.55	-2,068.26	-188.89	454,642.15	730,628.63	32.248403	-103.721042	
14,344.00	88.10	179.40	12,101.69	-2,162.22	-190.37	454,548.19	730,627.16	32.248145	-103.721049	
14,439.00	89.10	180.50	12,104.01	-2,257.19	-190.29	454,453.22	730,627.24	32.247884	-103.721050	
14,532.00	89.40	180.70	12,105.23	-2,350.18	-191.26	454,360.23	730,626.27	32.247628	-103.721055	
14,626.00	89.90	180.80	12,105.81	-2,444.17	-192.49	454,266.24	730,625.04	32.247370	-103.721061	
14,719.00	90.20	180.90	12,105.73	-2,537.16	-193.87	454,173.25	730,623.66	32.247114	-103.721067	
14,814.00	92.00	181.30	12,103.90	-2,632.12	-195.69	454,078.29	730,621.83	32.246853	-103.721074	
14,908.00	89.60	179.80	12,102.59	-2,726.10	-196.60	453,984.31	730,620.93	32.246595	-103.721079	
15,002.00	89.30	179.10	12,103.49	-2,820.09	-195.69	453,890.32	730,621.83	32.246337	-103.721078	
15,096.00	90.00	179.40	12,104.07	-2,914.08	-194.46	453,796.33	730,623.06	32.246078	-103.721076	
15,191.00	88.90	178.00	12,104.98	-3,009.04	-192.31	453,701.37	730,625.22	32.245817	-103.721070	
15,285.00	88.20	175.70	12,107.36	-3,102.86	-187.14	453,607.55	730,630.38	32.245559	-103.721055	
15,380.00	86.70	173.60	12,111.58	-3,197.35	-178.30	453,513.06	730,639.23	32.245300	-103.721029	
15,474.00	88.00	175.10	12,115.93	-3,290.79	-169.05	453,419.62	730,648.47	32.245043	-103.721000	
15,568.00	91.00	177.10	12,116.75	-3,384.55	-162.66	453,325.86	730,654.86	32.244785	-103.720981	
15,662.00	90.60	176.80	12,115.44	-3,478.41	-157.66	453,232.00	730,659.87	32.244527	-103.720967	
15,757.00	91.10	178.50	12,114.03	-3,573.31	-153.77	453,137.10	730,663.76	32.244266	-103.720956	
15,851.00	91.10	179.20	12,112.22	-3,667.28	-151.88	453,043.13	730,665.65	32.244007	-103.720952	
15,945.00	92.10	179.80	12,109.60	-3,761.23	-151.06	452,949.18	730,666.47	32.243749	-103.720951	



Total Directional Services

Survey Report - Geographic



Company:	Devon Energy	Local Co-ordinate Reference:	Well Catty Shack 6-7 Fed Com 711H
Project:	Lea County, NM (NAD83)	TVD Reference:	3542.8' GE + 24.5' KB @ 3567.30usft
Site:	Catty Shack 6-7 Fed Com	MD Reference:	3542.8' GE + 24.5' KB @ 3567.30usft
Well:	Catty Shack 6-7 Fed Com 711H	North Reference:	Grid
Wellbore:	OH	Survey Calculation Method:	Minimum Curvature
Design:	OH	Database:	EDM 5000.15 Single User Db

Survey										
Measured Depth (usft)	Inclination (°)	Azimuth (°)	Vertical Depth (usft)	+N/-S (usft)	+E/-W (usft)	Map Northing (usft)	Map Easting (usft)	Latitude	Longitude	
16,039.00	91.70	178.60	12,106.48	-3,855.17	-149.75	452,855.24	730,667.78	32.243491	-103.720948	
16,134.00	92.00	178.10	12,103.42	-3,950.08	-147.01	452,760.33	730,670.51	32.243230	-103.720941	
16,228.00	90.90	179.30	12,101.04	-4,044.03	-144.88	452,666.38	730,672.64	32.242972	-103.720936	
16,323.00	91.10	180.70	12,099.38	-4,139.01	-144.88	452,571.40	730,672.64	32.242711	-103.720938	
16,417.00	90.30	179.50	12,098.23	-4,233.00	-145.05	452,477.41	730,672.48	32.242452	-103.720940	
16,511.00	91.20	179.90	12,097.00	-4,326.99	-144.55	452,383.42	730,672.97	32.242194	-103.720940	
16,605.00	92.20	179.60	12,094.21	-4,420.94	-144.14	452,289.47	730,673.38	32.241936	-103.720941	
16,699.00	91.10	181.20	12,091.50	-4,514.90	-144.80	452,195.51	730,672.73	32.241677	-103.720945	
16,793.00	91.30	181.80	12,089.54	-4,608.85	-147.26	452,101.56	730,670.27	32.241419	-103.720954	
16,887.00	89.20	182.50	12,089.13	-4,702.77	-150.79	452,007.64	730,666.74	32.241161	-103.720967	
16,981.00	88.80	182.90	12,090.77	-4,796.65	-155.21	451,913.76	730,662.31	32.240903	-103.720983	
17,076.00	90.30	183.10	12,091.51	-4,891.52	-160.19	451,818.89	730,657.34	32.240642	-103.721001	
17,170.00	90.50	182.10	12,090.86	-4,985.42	-164.45	451,724.99	730,653.08	32.240384	-103.721017	
17,264.00	89.60	181.20	12,090.77	-5,079.38	-167.16	451,631.03	730,650.37	32.240126	-103.721027	
17,359.00	86.70	179.50	12,093.84	-5,174.31	-167.74	451,536.10	730,649.79	32.239865	-103.721031	
17,453.00	88.20	181.60	12,098.02	-5,268.21	-168.64	451,442.20	730,648.89	32.239607	-103.721036	
17,548.00	86.20	179.10	12,102.66	-5,363.08	-169.22	451,347.33	730,648.30	32.239346	-103.721039	
17,620.00	88.63	179.86	12,105.91	-5,435.00	-168.57	451,275.41	730,648.96	32.239149	-103.721038	
X Sec @ 17620' MD, 0' FNL, 631' FWL										
17,643.00	89.40	180.10	12,106.31	-5,457.99	-168.56	451,252.42	730,648.97	32.239085	-103.721039	
17,737.00	90.70	180.60	12,106.23	-5,551.99	-169.13	451,158.42	730,648.39	32.238827	-103.721042	
17,830.00	90.90	180.40	12,104.93	-5,644.98	-169.95	451,065.43	730,647.58	32.238571	-103.721047	
17,924.00	91.40	180.00	12,103.04	-5,738.96	-170.27	450,971.45	730,647.25	32.238313	-103.721050	
18,018.00	91.60	179.40	12,100.58	-5,832.92	-169.78	450,877.49	730,647.74	32.238055	-103.721050	
18,112.00	89.70	180.30	12,099.52	-5,926.91	-169.54	450,783.50	730,647.99	32.237797	-103.721051	
18,208.00	90.10	179.80	12,099.68	-6,022.91	-169.62	450,687.50	730,647.91	32.237533	-103.721053	
18,297.00	92.10	182.00	12,097.98	-6,111.87	-171.02	450,598.54	730,646.51	32.237288	-103.721059	
18,392.00	88.60	180.90	12,097.40	-6,206.82	-173.42	450,503.59	730,644.11	32.237027	-103.721068	
18,485.00	90.50	180.40	12,098.13	-6,299.81	-174.47	450,410.60	730,643.05	32.236772	-103.721073	
18,579.00	90.00	179.90	12,097.72	-6,393.81	-174.72	450,316.60	730,642.81	32.236513	-103.721076	
18,673.00	89.80	178.90	12,097.88	-6,487.80	-173.74	450,222.61	730,643.79	32.236255	-103.721075	
18,766.00	90.40	178.20	12,097.72	-6,580.77	-171.38	450,129.64	730,646.14	32.235999	-103.721069	
18,861.00	90.40	178.20	12,097.05	-6,675.72	-168.40	450,034.69	730,649.13	32.235738	-103.721061	
18,955.00	90.70	178.20	12,096.15	-6,769.67	-165.45	449,940.74	730,652.08	32.235480	-103.721053	
19,049.00	91.10	177.90	12,094.68	-6,863.61	-162.25	449,846.81	730,655.28	32.235222	-103.721044	
19,143.00	90.40	180.60	12,093.44	-6,957.58	-161.02	449,752.83	730,656.51	32.234963	-103.721042	
19,237.00	90.40	180.60	12,092.79	-7,051.57	-162.00	449,658.84	730,655.52	32.234705	-103.721047	
19,332.00	91.40	182.20	12,091.30	-7,146.53	-164.32	449,563.88	730,653.20	32.234444	-103.721056	
19,426.00	87.80	181.10	12,091.95	-7,240.47	-167.03	449,469.94	730,650.50	32.234186	-103.721067	
19,520.00	88.10	181.10	12,095.32	-7,334.39	-168.83	449,376.02	730,648.69	32.233928	-103.721074	
19,615.00	90.20	182.50	12,096.72	-7,429.33	-171.82	449,281.08	730,645.71	32.233667	-103.721086	
19,708.00	89.90	181.50	12,096.64	-7,522.27	-175.06	449,188.14	730,642.46	32.233411	-103.721098	
19,803.00	88.20	179.60	12,098.22	-7,617.24	-175.97	449,093.17	730,641.55	32.233150	-103.721103	
19,897.00	88.60	180.50	12,100.84	-7,711.21	-176.06	448,999.20	730,641.47	32.232892	-103.721105	
19,991.00	87.70	180.10	12,103.88	-7,805.15	-176.55	448,905.26	730,640.98	32.232634	-103.721108	
20,085.00	89.10	180.00	12,106.50	-7,899.12	-176.63	448,811.29	730,640.90	32.232376	-103.721110	
20,179.00	89.10	179.90	12,107.98	-7,993.10	-176.55	448,717.31	730,640.98	32.232117	-103.721111	
20,273.00	90.10	178.70	12,108.63	-8,087.09	-175.40	448,623.32	730,642.13	32.231859	-103.721109	
20,368.00	90.20	177.90	12,108.39	-8,182.05	-172.58	448,528.36	730,644.94	32.231598	-103.721102	
20,463.00	90.80	177.90	12,107.56	-8,276.98	-169.10	448,433.43	730,648.43	32.231337	-103.721093	
20,557.00	91.10	178.00	12,106.00	-8,370.91	-165.74	448,339.50	730,651.79	32.231079	-103.721083	
20,651.00	90.30	178.30	12,104.85	-8,464.85	-162.70	448,245.56	730,654.82	32.230820	-103.721075	
20,745.00	89.40	178.70	12,105.10	-8,558.82	-160.24	448,151.59	730,657.28	32.230562	-103.721069	
20,839.00	89.60	178.90	12,105.92	-8,652.79	-158.28	448,057.62	730,659.25	32.230304	-103.721064	
20,932.00	89.10	178.70	12,106.97	-8,745.77	-156.33	447,964.64	730,661.20	32.230048	-103.721060	



Total Directional Services
Survey Report - Geographic



Company:	Devon Energy	Local Co-ordinate Reference:	Well Catty Shack 6-7 Fed Com 711H
Project:	Lea County, NM (NAD83)	TVD Reference:	3542.8' GE + 24.5' KB @ 3567.30usft
Site:	Catty Shack 6-7 Fed Com	MD Reference:	3542.8' GE + 24.5' KB @ 3567.30usft
Well:	Catty Shack 6-7 Fed Com 711H	North Reference:	Grid
Wellbore:	OH	Survey Calculation Method:	Minimum Curvature
Design:	OH	Database:	EDM 5000.15 Single User Db

Survey										
Measured Depth (usft)	Inclination (°)	Azimuth (°)	Vertical Depth (usft)	+N/-S (usft)	+E/-W (usft)	Map Northing (usft)	Map Easting (usft)	Latitude	Longitude	
21,026.00	89.50	179.20	12,108.12	-8,839.74	-154.61	447,870.67	730,662.92	32.229790	-103.721056	
21,120.00	89.20	179.10	12,109.19	-8,933.73	-153.21	447,776.68	730,664.32	32.229531	-103.721053	
21,215.00	89.00	179.00	12,110.68	-9,028.70	-151.64	447,681.71	730,665.89	32.229270	-103.721050	
21,309.00	90.20	178.50	12,111.33	-9,122.68	-149.59	447,587.74	730,667.94	32.229012	-103.721045	
21,403.00	90.00	178.30	12,111.17	-9,216.64	-146.96	447,493.77	730,670.57	32.228754	-103.721038	
21,498.00	90.30	178.10	12,110.92	-9,311.59	-143.98	447,398.82	730,673.55	32.228492	-103.721030	
21,593.00	89.40	177.90	12,111.17	-9,406.53	-140.66	447,303.88	730,676.86	32.228231	-103.721021	
21,687.00	88.40	177.20	12,112.98	-9,500.43	-136.64	447,209.98	730,680.88	32.227973	-103.721010	
21,782.00	90.10	178.20	12,114.22	-9,595.34	-132.83	447,115.07	730,684.69	32.227712	-103.721000	
21,876.00	90.70	178.70	12,113.56	-9,689.30	-130.29	447,021.11	730,687.24	32.227454	-103.720993	
21,970.00	90.60	179.10	12,112.50	-9,783.28	-128.49	446,927.13	730,689.04	32.227196	-103.720989	
22,065.00	92.20	180.60	12,110.18	-9,878.24	-128.24	446,832.17	730,689.29	32.226935	-103.720990	
22,159.00	90.60	180.70	12,107.88	-9,972.20	-129.30	446,738.21	730,688.22	32.226676	-103.720995	
22,254.00	89.40	180.20	12,107.88	-10,067.20	-130.05	446,643.21	730,687.48	32.226415	-103.720999	
22,348.00	89.60	180.20	12,108.70	-10,161.20	-130.38	446,549.21	730,687.15	32.226157	-103.721002	
22,443.00	87.80	179.20	12,110.85	-10,256.16	-129.88	446,454.25	730,687.65	32.225896	-103.721002	
22,537.00	87.20	178.60	12,114.95	-10,350.06	-128.08	446,360.35	730,689.45	32.225638	-103.720998	
22,632.00	87.10	178.70	12,119.68	-10,444.91	-125.84	446,265.50	730,691.69	32.225377	-103.720993	
22,727.00	86.10	177.90	12,125.31	-10,539.70	-123.03	446,170.71	730,694.50	32.225116	-103.720985	
22,765.00	86.10	177.90	12,127.90	-10,577.59	-121.64	446,132.82	730,695.89	32.225012	-103.720981	
Final Survey @ 22765' MD										
22,805.00	86.10	177.90	12,130.62	-10,617.47	-120.18	446,092.94	730,697.35	32.224903	-103.720977	
X LTP @ 22805' MD, 100' FSL, 680' FWL										
22,815.00	86.10	177.90	12,131.30	-10,627.44	-119.81	446,082.97	730,697.72	32.224875	-103.720976	
PBHL; 90' FSL, 680' FWL										

Design Annotations					
Measured Depth (usft)	Vertical Depth (usft)	Local Coordinates		Comment	
		+N/-S (usft)	+E/-W (usft)		
11,618.00	11,598.81	252.35	-286.46	KOP @ 11618' MD, 402' FSL, 514' FWL	
12,330.00	12,105.85	-150.42	-226.89	X Sec @ 12330' MD, 0' FNL, 573' FWL	
12,430.00	12,111.67	-250.16	-223.17	X FTP @ 12430' MD, 100' FNL, 577' FWL	
17,620.00	12,105.91	-5,435.00	-168.57	X Sec @ 17620' MD, 0' FNL, 631' FWL	
22,765.00	12,127.90	-10,577.59	-121.64	Final Survey @ 22765' MD	
22,805.00	12,130.62	-10,617.47	-120.18	X LTP @ 22805' MD, 100' FSL, 680' FWL	
22,815.00	12,131.30	-10,627.44	-119.81	PBHL; 90' FSL, 680' FWL	

Checked By: _____ Approved By: _____ Date: _____

Submit 1 Copy To Appropriate District Office
 District I – (575) 393-6161
 1625 N. French Dr., Hobbs, NM 88240
 District II – (575) 748-1283
 811 S. First St., Artesia, NM 88210
 District III – (505) 334-6178
 1000 Rio Brazos Rd., Aztec, NM 87410
 District IV – (505) 476-3460
 1220 S. St. Francis Dr., Santa Fe, NM 87505

State of New Mexico
 Energy, Minerals and Natural Resources

Form C-103
 Revised August 1, 2011

OIL CONSERVATION DIVISION
 1220 South St. Francis Dr.
 Santa Fe, NM 87505

WELL API NO.	30-025-48486
5. Indicate Type of Lease STATE <input type="checkbox"/> FEE <input type="checkbox"/>	
6. State Oil & Gas Lease No.	
7. Lease Name or Unit Agreement Name	CATTY SHACK 6 7 FEDERAL COM
8. Well Number	711H
9. OGRID Number	6137
10. Pool name or Wildcat	; WC-025 G-08 S243217P; UPR WOLFCAMP

SUNDRY NOTICES AND REPORTS ON WELLS
 (DO NOT USE THIS FORM FOR PROPOSALS TO DRILL OR TO DEEPEN OR PLUG BACK TO A DIFFERENT RESERVOIR. USE "APPLICATION FOR PERMIT" (FORM C-101) FOR SUCH PROPOSALS.)

1. Type of Well: Oil Well Gas Well Other

2. Name of Operator: Devon Energy Production Company, L.P.

3. Address of Operator: 333 West Sheridan, Oklahoma City, OK 73102

4. Well Location
 Unit Letter 4 (lot) : 150 feet from the South line and 800 feet from the West line
 Section 31 Township 23S Range 32E NMPM County EDDY

11. Elevation (Show whether DR, RKB, RT, GR, etc.)
 GL: 3542.8

12. Check Appropriate Box to Indicate Nature of Notice, Report or Other Data

NOTICE OF INTENTION TO:		SUBSEQUENT REPORT OF:	
PERFORM REMEDIAL WORK <input type="checkbox"/>	PLUG AND ABANDON <input type="checkbox"/>	REMEDIAL WORK <input type="checkbox"/>	ALTERING CASING <input type="checkbox"/>
TEMPORARILY ABANDON <input type="checkbox"/>	CHANGE PLANS <input type="checkbox"/>	COMMENCE DRILLING OPNS. <input type="checkbox"/>	P AND A <input type="checkbox"/>
PULL OR ALTER CASING <input type="checkbox"/>	MULTIPLE COMPL <input type="checkbox"/>	CASING/CEMENT JOB <input type="checkbox"/>	
DOWNHOLE COMMINGLE <input type="checkbox"/>			
OTHER: <input type="checkbox"/>		OTHER: <input type="checkbox"/>	COMPLETION <input checked="" type="checkbox"/>

13. Describe proposed or completed operations. (Clearly state all pertinent details, and give pertinent dates, including estimated date of starting any proposed work). SEE RULE 19.15.7.14 NMAC. For Multiple Completions: Attach wellbore diagram of proposed completion or recompletion.
 7/6/2021-7/15/2021: MIRU WL & PT. PT csg to 12000 PSI for 30min, OK. TIH w/pump through frac plug and guns. Perf WOLFCAMP, 12437-22787 Frac totals 25178109# prop, 429473 bbl fluid, 58 bbls acid. DO plugs & CO to PBTD w/float collar 22789.4' MD/12129.6' TVD CHC, FWB, ND BOP. Tubing set: N/A TOP: 8/18/2021
 Rustler-861
 Salt-1229
 Base of Salt-4447
 Lamar-4447
 Bell Canyon-4640
 Cherry Canyon-5499
 Brushy Canyon-6777
 1st Bone Spring Lime-8374
 1st Bone Spring Sand-8910
 2nd Bone Spring Sand-10118
 3rd Bone Spring Lime-10677
 3rd Bone Spring Sand-11460
 Wolfcamp-11925
 Strawn-13740

I hereby certify that the information above is true and complete to the best of my knowledge and belief.


SIGNATURE Jenny Harms TITLE Regulatory Specialist DATE 9/21/2021

Type or print name Jenny Harms E-mail address: jenny.harms@dvn.com PHONE: 405-552-6560

For State Use Only Jenny Harms

APPROVED BY: John Garcia TITLE Petroleum Engineer DATE 10/27/2021

Conditions of Approval (if any):

Submit To Appropriate District Office Two Copies District I 1625 N. French Dr., Hobbs, NM 88240 District II 811 S. First St., Artesia, NM 88210 District III 1000 Rio Brazos Rd., Aztec, NM 87410 District IV 1220 S. St. Francis Dr., Santa Fe, NM 87505	State of New Mexico Energy, Minerals and Natural Resources Oil Conservation Division 1220 South St. Francis Dr. Santa Fe, NM 87505	Form C-105 Revised August 1, 2011 1. WELL API NO. 30-025-48486 2. Type of Lease <input type="checkbox"/> STATE <input type="checkbox"/> FEE <input checked="" type="checkbox"/> FED/INDIAN 3. State Oil & Gas Lease No.								
WELL COMPLETION OR RECOMPLETION REPORT AND LOG										
4. Reason for filing: <input checked="" type="checkbox"/> COMPLETION REPORT (Fill in boxes #1 through #31 for State and Fee wells only) <input type="checkbox"/> C-144 CLOSURE ATTACHMENT (Fill in boxes #1 through #9, #15 Date Rig Released and #32 and/or #33; attach this and the plat to the C-144 closure report in accordance with 19.15.17.13.K NMAC)		5. Lease Name or Unit Agreement Name CATTY SHACK 6 7 FEDERAL COM 6. Well Number: 711H								
7. Type of Completion: <input checked="" type="checkbox"/> NEW WELL <input type="checkbox"/> WORKOVER <input type="checkbox"/> DEEPENING <input type="checkbox"/> PLUGBACK <input type="checkbox"/> DIFFERENT RESERVOIR <input type="checkbox"/> OTHER										
8. Name of Operator Devon Energy Production Company, L.P.		9. OGRID 6137								
10. Address of Operator 333 West Sheridan Avenue, Oklahoma City, OK 73102		11. Pool name or Wildcat ; WC-025 G-08 S243217P; UPR WOLFCAMP								
12. Location Surface:	Unit Ltr 	Section 31	Township 23S	Range 32E	Lot 4	Feet from the 150	N/S Line South	Feet from the 800	E/W Line West	County EDDY
BH:		7	24S	32E	4	91	South	622	West	EDDY
13. Date Spudded 5/4/21	14. Date T.D. Reached 6/14/21	15. Date Rig Released 6/17/21		16. Date Completed (Ready to Produce) 8/18/21		17. Elevations (DF and RKB, RT, GR, etc.) 3542.8 GL				
18. Total Measured Depth of Well 22815 MD, 12131 TVD		19. Plug Back Measured Depth 22789.4 MD/12129.6 TVD		20. Was Directional Survey Made? Yes		21. Type Electric and Other Logs Run				
22. Producing Interval(s), of this completion - Top, Bottom, Name 12437-22787, WC-025 G-08 S243217P; UPR WOLFCAMP										
23. CASING RECORD (Report all strings set in well)										
CASING SIZE	WEIGHT LB./FT.	DEPTH SET	HOLE SIZE	CEMENTING RECORD	AMOUNT PULLED					
13.375	54.5	999.2	17.5	630						
8 5/8	32	11563.1	9.625	2295	TOC @ 7000					
5.5	20	22801.2	7.875	2800						
24. LINER RECORD										
SIZE	TOP	BOTTOM	SACKS CEMENT	SCREEN						
					Tubing set: N/A					
26. Perforation record (interval, size, and number) 12437 - 22787, total 1981 holes				27. ACID, SHOT, FRACTURE, CEMENT, SQUEEZE, ETC. DEPTH INTERVAL AMOUNT AND KIND MATERIAL USED 12437-22787 Acidize and frac in 34 stages.						
28. PRODUCTION										
Date First Production 8/18/21		Production Method (<i>Flowing, gas lift, pumping - Size and type pump</i>)				Well Status (<i>Prod. or Shut-in</i>) Producing				
Date of Test	Hours Tested	Choke Size	Prod'n For Test Period	Oil - Bbl	Gas - MCF	Water - Bbl.	Gas - Oil Ratio			
8/31/21	24			3190	8689	4464	2723			
Flow Tubing Press.	Casing Pressure	Calculated 24-Hour Rate	Oil - Bbl.	Gas - MCF	Water - Bbl.	Oil Gravity - API - (<i>Corr.</i>)				
29. Disposition of Gas (<i>Sold, used for fuel, vented, etc.</i>) Sold							30. Test Witnessed By			
31. List Attachments Directional Survey										
32. If a temporary pit was used at the well, attach a plat with the location of the temporary pit.										
33. If an on-site burial was used at the well, report the exact location of the on-site burial: Latitude Longitude NAD 1927 1983										
I hereby certify that the information shown on both sides of this form is true and complete to the best of my knowledge and belief										
Signature				Printed Name	Jenny Harms	Title	Regulatory Specialist	Date	9/21/2021	
E-mail Address	jenny.harms@dvn.com									

District I
 1625 N. French Dr., Hobbs, NM 88240
 Phone:(575) 393-6161 Fax:(575) 393-0720

District II
 811 S. First St., Artesia, NM 88210
 Phone:(575) 748-1283 Fax:(575) 748-9720

District III
 1000 Rio Brazos Rd., Aztec, NM 87410
 Phone:(505) 334-6178 Fax:(505) 334-6170

District IV
 1220 S. St Francis Dr., Santa Fe, NM 87505
 Phone:(505) 476-3470 Fax:(505) 476-3462

State of New Mexico
Energy, Minerals and Natural Resources
Oil Conservation Division
1220 S. St Francis Dr.
Santa Fe, NM 87505

ACKNOWLEDGMENTS

Action 50671

ACKNOWLEDGMENTS

Operator: DEVON ENERGY PRODUCTION COMPANY, LP 333 West Sheridan Ave. Oklahoma City, OK 73102	OGRID: 6137
	Action Number: 50671
	Action Type: [C-104] Completion Packet (C-104C)

ACKNOWLEDGMENTS

<input checked="" type="checkbox"/>	I hereby certify that the required Water Use Report has been, or will be, submitted for this wells completion.
<input checked="" type="checkbox"/>	I hereby certify that the required FracFocus disclosure has been, or will be, submitted for this wells completion.

District I
 1625 N. French Dr., Hobbs, NM 88240
 Phone:(575) 393-6161 Fax:(575) 393-0720

District II
 811 S. First St., Artesia, NM 88210
 Phone:(575) 748-1283 Fax:(575) 748-9720

District III
 1000 Rio Brazos Rd., Aztec, NM 87410
 Phone:(505) 334-6178 Fax:(505) 334-6170

District IV
 1220 S. St Francis Dr., Santa Fe, NM 87505
 Phone:(505) 476-3470 Fax:(505) 476-3462

State of New Mexico
Energy, Minerals and Natural Resources
Oil Conservation Division
1220 S. St Francis Dr.
Santa Fe, NM 87505

CONDITIONS
 Action 50671

CONDITIONS

Operator: DEVON ENERGY PRODUCTION COMPANY, LP 333 West Sheridan Ave. Oklahoma City, OK 73102	OGRID: 6137
	Action Number: 50671
	Action Type: [C-104] Completion Packet (C-104C)

CONDITIONS

Created By	Condition	Condition Date
plmartinez	File 3160-4 Completion Report and 3160-5 Completion Sundry within 10 days to NMOCD after BLM approval.	10/27/2021