

Office  
 District I – (575) 393-6161  
 1625 N. French Dr., Hobbs, NM 88240  
 District II – (575) 748-1283  
 811 S. First St., Artesia, NM 88210  
 District III – (505) 334-6178  
 1000 Rio Brazos Rd., Aztec, NM 87410  
 District IV – (505) 476-3460  
 1220 S. St. Francis Dr., Santa Fe, NM  
 87505

State of New Mexico  
 Energy, Minerals and Natural Resources

Form C-103  
 Revised July 18, 2013

OIL CONSERVATION DIVISION  
 1220 South St. Francis Dr.  
 Santa Fe, NM 87505

WELL API NO. 30-015-24635
5. Indicate Type of Lease STATE <input type="checkbox"/> FEE <input checked="" type="checkbox"/>
6. State Oil & Gas Lease No.
7. Lease Name or Unit Agreement Name Chumbley XS Com
8. Well Number 1
9. OGRID Number 7377
10. Pool name or Wildcat Eagle Creek; Atoka-Morrow, East

<b>SUNDRY NOTICES AND REPORTS ON WELLS</b> (DO NOT USE THIS FORM FOR PROPOSALS TO DRILL OR TO DEEPEN OR PLUG BACK TO A DIFFERENT RESERVOIR. USE "APPLICATION FOR PERMIT" (FORM C-101) FOR SUCH PROPOSALS.)	
1. Type of Well: Oil Well <input type="checkbox"/> Gas Well <input checked="" type="checkbox"/> Other	
2. Name of Operator EOG Resources, Inc.	
3. Address of Operator 104 South Fourth Street, Artesia, NM 88210	
4. Well Location Unit Letter <u>G</u> : <u>2100</u> feet from the <u>North</u> line and <u>1980</u> feet from the <u>East</u> line Section <u>8</u> Township <u>18S</u> Range <u>26E</u> NMPM <u>Eddy</u> County	
11. Elevation (Show whether DR, RKB, RT, GR, etc.) 3396'GR	

12. Check Appropriate Box to Indicate Nature of Notice, Report or Other Data

NOTICE OF INTENTION TO:

PERFORM REMEDIAL WORK ☐ PLUG AND ABANDON ☒  
 TEMPORARILY ABANDON ☐ CHANGE PLANS ☐  
 PULL OR ALTER CASING ☐ MULTIPLE COMPL ☐  
 DOWNHOLE COMMINGLE ☐  
 CLOSED-LOOP SYSTEM ☐  
 OTHER: ☐

SUBSEQUENT REPORT OF:

REMEDIAL WORK ☐ ALTERING CASING ☐  
 COMMENCE DRILLING OPNS. ☐ P AND A ☐  
 CASING/CEMENT JOB ☐  
 OTHER: ☐

Notify OCD 24 hrs. prior to any work done

13. Describe proposed or completed operations. (Clearly state all pertinent details, and give pertinent dates, including estimated date of starting any proposed work). SEE RULE 19.15.7.14 NMAC. For Multiple Completions: Attach wellbore diagram of proposed completion or recompletion.

EOG Resources, Inc. plans to plug and abandon this well as follows:

- MIRU all safety equipment as needed. NU BOP. POOH with production equipment.
- Set a CIBP at 8461'. Pressure test CIBP and spot 25 sx Class "H" cement on top to 8241'. WOC and tag. This will cover Atoka perfs and top.
- Spot a 25 sx Class "H" cement plug from 7617'-7397'. This will cover Canyon top. **Perf @ 5626' & attempt to sqz - WOC & tag - Wolfcamp**
- Spot a 25 sx Class "H" cement plug from 6913'-6693'. This will cover Cisco top.
- Perforate at 5900'. Attempt injection rate. Squeeze with 31 sx Class "C" cement from 5996'-5836'. WOC and tag. This will TOC plug.
- Perforate at 4900'. Attempt injection rate. Squeeze with 36 sx Class "C" cement from 4975'-4823'. WOC and tag. This will cover DV tool.
- Spot a 90 sx Class "C" cement plug from 4745'-4364'. This will cover ~~Wolfcamp~~ and Abo tops. **Perf @ 4467' & attempt to sqz. WOC & tag**
- Perforate at 3080'. Attempt injection rate. Squeeze with 28 sx Class "C" cement from 3150'-3007'. WOC and tag. This will cover TOC plug.
- Perforate at 2356'. Attempt injection rate. Squeeze with 31 sx Class "C" cement from 2356'-2225'. WOC and tag. This will cover Glorieta top.
- Perforate at 1400'. Attempt injection rate. Squeeze with 118 sx Class "C" cement from 1400'-922'. WOC and tag. This will cover Casing shoe and San Andres top.
- Perforate at 490'. Attempt injection rate. Squeeze with 122 sx Class "C" cement from 490' up to surface. Back fill as needed.
- Cut off wellhead and install dry hole marker. Clean location as per regulated.

Wellbore schematics attached

Spud Date:

Rig Release Date:

\*\*\*\*SEE ATTACHED COA's\*\*\*\*

Must be plugged by 10/28/2022

I hereby certify that the information above is true and complete to the best of my knowledge and belief.

SIGNATURE Tina Huerta TITLE Regulatory Specialist DATE October 26, 2021

Type or print name Tina Huerta E-mail address: tina.huerta@eogresources.com PHONE: 575-748-4168  
**For State Use Only**

APPROVED BY: [Signature] TITLE Staff Manager DATE 10/28/2021  
 Conditions of Approval (if any):

COMMENTS

TOC @ 3100 by CBL

DV Tool @ 4925

TOC 5946 per cased hole correlation

Atoka Perfs: 8511-8569

CIBP @ 8700 w/35' cmt

Morrow Perfs: 8739-8750

A

B

C

PBTD: 8,700 MD

TD: 8,950 MD

Sec-TWN-RNG: 8-18S-26E

FOOTAGES: 2100' FNL & 1980' FEL

API: 30-015-24635

GL: 3396

KB: 3412

CASING DETAIL

#	HOLE SIZE	SIZE	WGHT	GRADE	Top	Bottom	Sx Cmt	Circ/TOC	TOC by
A	17 1/2	13 3/8	68	K55	0	440	400	Circ/TOC	
B	12 1/4	8 5/8	24	J55	0	1350	1700	CIRC	1"ed
C	7 7/8	5 1/2	15.5/17	N80/K55	0	8909	1825	3100/5946	CBL

FORMATION TOPS

	FORMATION	TOP		Formation	TOP		
				Atoka	8452		
	San Andres	973		Morrow Cl	8660		
	Glorieta	2306					
	Abo	4417					
	WC Ls	4695					
	Cisco	6863					
	Canyon Ls	7567					
	Strawn	8046					

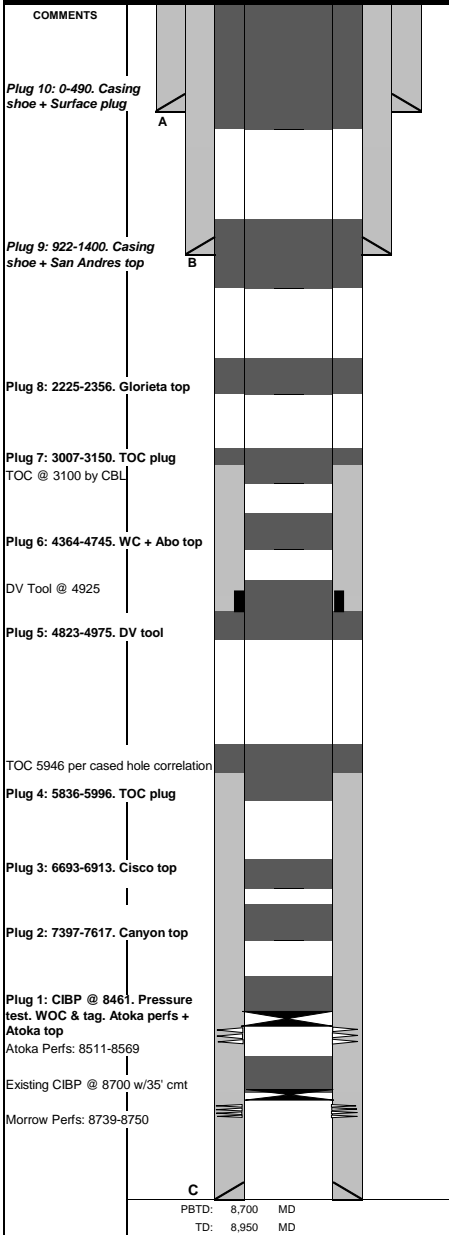
Tubing

	2 7/8 tubing 8417 & packer set @ 8424								
--	---------------------------------------	--	--	--	--	--	--	--	--

Perforation Detail

	Formation	Top	Bottom		Treatment		Notes		
	Atoka	8,511	8,569		Acidized w/3000g 7 1/2% Morrow acid, 1000 scf/bbls N2 & ball sealers				
	Morrow	8,739	8,750						

Chumbley XS #1 Proposed



Sec-TWN-RNG: 8-18S-26E				API: 30-015-24635					
FOOTAGES: 2100' FNL & 1980' FEL				GL: 3396					
				KB: 3412					
CASING DETAIL									
#	HOLE SIZE	SIZE	WGHT	GRADE	Top	Bottom	Sx Cmt	Circ/TOC	TOC by
A	17 1/2	13 3/8	68	K55	0	440	400	Circ/TOC	
B	12 1/4	8 5/8	24	J55	0	1350	1700	CIRC	1"ed
C	7 7/8	5 1/2	15.5/17	N80/K55	0	8909	1825	3100/5946	CBL
FORMATION TOPS									
		FORMATION	TOP			Formation	TOP		
						Atoka	8452		
		San Andres	973			Morrow Cl	8660		
		Glorieta	2306						
		Abo	4417						
		WC Ls	4695						
		Cisco	6863						
		Canyon Ls	7567						
		Strawn	8046						
Tubing									
	2 7/8 tubing 8417 & packer set @ 8424								
Perforation Detail									
		Formation	Top	Bottom		Treatment		Notes	
		Atoka	8,511	8,569		Acidized w/3000g 7 1/2% Morrow acid, 1000 scf/bbls N2 & ball sealers			
		Morrow	8,739	8,750					
#	SX	Class	Top	Bottom	A	Notes			Tag
1	25	H	8241	8461	220	CIBP @ 8461. Pressure Test. Spot 25sx. WOC & tag.			Y
2	25	H	7397	7617	220	Atoka perfs + Atoka top			N
3	25	H	6693	6913	220	Spot 25sx. Canyon top			N
4	31	C	5836	5996	160	Spot 25sx. Cisco top			N
5	36	C	4823	4975	152	Perf @ 5900. Attempt Inj. Sq 31sx. WOC & tag. TOC plug			Y
6	90	C	4364	4745	381	Perf @ 4900. Attempt Inj. Sq 36sx. WOC & tag. DV tool			Y
7	28	C	3007	3150	143	Spot 90sx. WC top + Abo top			N
8	31	C	2225	2356	131	Perf @ 3080. Attempt Inj. Sq 28sx. WOC & tag. TOC plug.			Y
9	118	C	922	1400	478	Perf @ 2356. Attempt Inj. Sq 31sx. WOC & tag. Glorieta top			Y
10	122	C	0	490	490	Perf @ 1400. Attempt Inj. Sq 118sx. WOC & tag. Casing shoe + San Andres top			Y
						Perf @ 490. Attempt Inj. Sq 122sx. WOC & tag. Casing shoe + Surface plug			Y
ADDITIONAL DETAIL									
	12/6/1983	Cmt top of Stage 1 5946, DV tool 4925. Stage 2: TOC 3100' per CBL, DV Tool should have been at 5488 but cased hole correlation showed @ 4925							
	2/7/1997	CIBP @ 8700'w/35' cement. Added Atoka perforations 8511-8569. Acidized							
Prepared by: MJM									
10/21/21									

## CONDITIONS FOR PLUGGING AND ABANDONMENT

### OCD - Southern District

The following is a guide or checklist in preparation of a plugging program, this is not all inclusive and care must be exercised in establishing special plugging programs in unique and unusual cases, **Notify NMOCD District Office II at (575)-748-1283 at least 24 hours before beginning work. After MIRU rig will remain on well until it is plugged to surface. OCD is to be notified before rig down. Company representative will be on location during plugging procedures.**

1. A notice of intent to plug and abandon a wellbore is required to be approved before plugging operations are conducted. A cement evaluation tool is required in order to ensure isolation of producing formations, protection of water and correlative rights. A cement bond log or other accepted cement evaluation tool is to be provided to the division for evaluation if one has not been previously run or if the well did not have cement circulated to surface during the original casing cementing job or subsequent cementing jobs. Insure all bradenheads have been exposed, identified and valves are operational prior to rig up.
2. Closed loop system is to be used for entire plugging operation. Upon completion, contents of steel pits are to be hauled to a permitted disposal location.
3. Trucking companies being used to haul oilfield waste fluids to a disposal – commercial or private – shall have an approved NMOCD C-133 permit. A copy of this permit shall be available in each truck used to haul waste products. It is the responsibility of the operator as well as the contractor, to verify that this permit is in place prior to performing work. Drivers shall be able to produce a copy upon request of an NMOCD Field inspector.
4. Filing a subsequent C-103 will serve as notification that the well has been plugged.
5. A final C-103 shall be filed (and a site inspection by NMOCD Inspector to determine if the location is satisfactorily cleaned, all equipment, electric poles and trash has been removed to Meet NMOCD standards) before bonding can be released.
6. If work has not begun within 1 Year of the approval of this procedure, an extension request must be file stating the reason the well has not been plugged.
7. Squeeze pressures are not to exceed 500 psi, unless approval is given by NMOCD.
8. Produced water **will not** be used during any part of the plugging operation.
9. Mud laden fluids must be placed between all cement plugs mixed at 25 sacks per 100 bbls of water.
10. All cement plugs will be a minimum of 100' in length or a minimum of 25 sacks of cement, whichever is greater. 50' of calculated cement excess required for inside casing plugs and 100% calculated cement excess required on outside casing plugs.
11. Class 'C' cement will be used above 7500 feet.
12. Class 'H' cement will be used below 7500 feet.
13. A cement plug is required to be set 50' above and 50' below, casing stubs, DV tools, attempted casing cut offs, cement tops outside casing, salt sections and anywhere the casing is perforated, these plugs require a 4 hour WOC and then will be tagged
14. All Casing Shoes Will Be Perforated 50' below shoe depth and Attempted to be Squeezed, cement needs to be 50' above and 50' Below Casing Shoe inside the Production Casing.

16. When setting the top out cement plug in production, intermediate and surface casing, wellbores should remain full at least 30 minutes after plugs are set
17. A CIBP is to be set within 100' of production perforations, capped with 100' of cement, WOC 4 hours and tag.
18. A CIBP with 35' of cement may be used in lieu of the 100' plug if set with a bailer. This plug will be placed within 100' of the top perforation, (WOC 4 hrs and tag).
19. No more than 3000' is allowed between cement plugs in cased hole and 2000' in open hole.
20. Some of the Formations to be isolated with cement plugs are: These plugs to be set to isolate formation tops
  - A) Fusselman
  - B) Devonian
  - C) Morrow
  - D) Wolfcamp
  - E) Bone Springs
  - F) Delaware
  - G) Any salt sections
  - H) Abo
  - I) Glorieta
  - J) Yates.
  - K) Potash---(In the R-111-P Area (Page 3 & 4), a solid cement plug must be set across the salt section. Fluid used to mix the cement shall be saturated with the salts that are common to the section penetrated and in suitable proportions, not more than 3% calcium chloride (by weight of cement) will be considered the desired mixture whenever possible, WOC 4 hours and tag, this plug will be 50' below the bottom and 50' above the top of the Formation.
21. If cement does not exist behind casing strings at recommended formation depths, the casing can be cut and pulled with plugs set at recommended depths. If casing is not pulled, perforations will be shot and cement squeezed behind casing, WOC and tagged. These plugs will be set 50' below formation bottom to 50' above formation top inside the casing

#### DRY HOLE MARKER REQUIREMENTS

The operator shall mark the exact location of the plugged and abandoned well with a steel marker not less than four inches in diameter, 3' below ground level with a plate of at least ¼" welded to the top of the casing and the dry hole marker welded on the plate with the following information welded on the dry hole marker:

1. Operator name 2. Lease and Well Number 3. API Number 4. Unit Letter 5. Quarter Section (feet from the North, South, East or West) 6. Section, Township and Range 7. Plugging Date 8. County (SPECIAL CASES)-----AGRICULTURE OR PRARIE CHICKEN BREEDING AREAS

In these areas, a below ground marker is required with all pertinent information mentioned above on a plate, set 3' below ground level, a picture of the plate will be supplied to NMOCD for record, the exact location of the marker (longitude and latitude by GPS) will be provided to NMOCD (We typically require a current survey to verify the GPS)

#### SITE REMEDIATION DUE WITHIN ONE YEAR OF WELL PLUGGING COMPLETION

## R-111-P Area

### T 18S – R 30E

Sec 10 Unit P. Sec 11 Unit M,N. Sec 13 Unit L,M,N. Sec 14 Unit C -P. Sec 15 Unit A G,H,I,J,K,N,O,P. Sec 22 Unit All except for M. Sec 23, Sec 24 Unit C,D,E,L, Sec 26 Unit A-G, Sec 27 Unit A,B,C

### T 19S – R 29E

Sec 11 Unit P. Sec 12 Unit H-P. Sec 13. Sec 14 Unit A,B,F-P. Sec 15 Unit P. Sec 22 Unit A,B,C,F,G,H,I,J K,N,O,P. Sec 23. Sec 24. Sec 25 Unit D. Sec 26 Unit A- F. Sec 27 Unit A,B,C,F,G,H.

### T 19S – R 30E

Sec 2 Unit K,L,M,N. Sec 3 Unit I,L,M,N,O,P. Sec 4 Unit C,D,E,F,G,I-P. Sec 5 Unit A,B,C,E-P. Sec 6 Unit I,O,P. Sec 7 – Sec 10. Sec 11 Unit D, G—P. Sec 12 Unit A,B,E-P. Sec 13 Unit A-O. Sec 14-Sec 18. Sec 19 Unit A-L, P. Sec 20 – Sec 23. Sec 24 Unit C,D,E,F,L,M,N. Sec 25 Unit D. Sec 26 Unit A-G, I-P. Sec 27, Sec 28, Sec 29 Unit A,B,C,D,F,G,H,I,J,O,P. Sec 32 Unit A,B,G,H,I,J,N,O,P. Sec 33. Sec 34. Sec 35. Sec 36 Unit D,E,F,I-P.

### T 19S – R 31E

Sec 7 Unit C,D,E,F,L. Sec 18 Unit C,D,E,F,G,K,L. Sec 31 Unit M. Sec 34 Unit P. Sec 35 Unit M,N,O. Sec 36 Unit O,P.

### T 20S – R 29E

Sec 1 Unit H,I,P. Sec 13 Unit E,L,M,N. Sec 14 Unit B-P. Sec 15 Unit A,H,I,J,N,O,P. Sec 22 Unit A,B,C,F,G,H,I,J,O,P. Sec 23. Sec 24 Unit C,D,E,F,G,J-P. Sec 25 Unit A-O. Sec 26. Sec 27 Unit A,B,G,H,I,J,O,P. Sec 34 Unit A,B,G,H. Sec 35 Unit A-H. Sec 36 Unit B-G.

### T 20S – R 30E

Sec 1 – Sec 4. Sec 5 Unit A,B,C,E-P. Sec 6 Unit E,G-P. Sec 7 Unit A-H,I,J,O,P. Sec 8 – 17. Sec 18 Unit A,B,G,H,I,J,O,P. Sec 19 Unit A,B,G,H,I,J,O,P. Sec 20 – 29. Sec 30 Unit A-L,N,O,P. Sec 31 Unit A,B,G,H,I,P. Sec 32 – Sec 36.

### T 20S – R 31E

Sec 1 Unit A,B,C,E-P. Sec 2. Sec 3 Unit A,B,G,H,I,J,O,P. Sec 6 Unit D,E,F,J-P. Sec 7. Sec 8 Unit E-P. Sec 9 Unit E,F,J-P. Sec 10 Unit A,B,G-P. Sec 11 – Sec 36.

### T 21S – R 29E

Sec 1 – Sec 3. Sec 4 Unit L1 – L16,I,J,K,O,P. Sec 5 Unit L1. Sec 10 Unit A,B,H,P. Sec 11 – Sec 14. Sec 15 Unit A,H,I. Sec 23 Unit A,B. Sec 24 Unit A,B,C,D,F,G,H,I,J,O,P. Sec 25 Unit A,O,P. Sec 35 Unit G,H,I,J,K,N,O,P. Sec 36 A,B,C,F – P.

### T 21S – R 30E

Sec 1 – Sec 36

### T 21S – R 31E

Sec 1 – Sec 36

### T 22S – R 28E

Sec 36 Unit A,H,I,P.

**T 22S – R 29E**

Sec 1. Sec2. Sec 3 Unit I,J,N,O,P. Sec 9 Unit G – P. Sec 10 – Sec 16. Sec 19 Unit H,I,J. Sec 20 – Sec 28. Sec 29 Unit A,B,C,D,G,H,I,J,O,P. Sec 30 Unit A. Section 31 Unit C – P. Sec 32 – Sec 36

**T 22S – R 30E**

Sec 1 – Sec 36

**T 22S – R 31E**

Sec 1 – Sec 11. Sec 12 Unit B,C,D,E,F,L. Sec 13 Unit E,F,K,L,M,N. Sec 14 – Sec 23. Sec 24 Unit C,D,E,F,K,L,M,N. Sec 25 Unit A,B,C,D. Sec 26 Unit A,BC,D,G,H. Sec 27 – Sec 34.

**T 23S – R 28E**

Sec 1 Unit A

**T 23S – R 29E**

Sec 1 – Sec 5. Sec 6 Unit A – I, N,O,P. Sec 7 Unit A,B,C,G,H,I,P. Sec 8 Unit A – L, N,O,P. Sec 9 – Sec 16. Sec 17 Unit A,B,G,H,I,P. Sec 21 – Sec 23. Sec 24 Unit A – N. Sec 25 Unit D,E,L. Sec 26. Sec 27. Sec 28 Unit A – J, N,O,P. Sec 33 Unit A,B,C. Sec 34 Unit A,B,C,D,F,G,H. Sec 35. Sec 36 Unit B,C,D,E,F,G,K,L.

**T 23S – R 30E**

Sec 1 – Sec 18. Sec 19 Unit A – I,N,O,P. Sec 20, Sec 21. Sec 22 Unit A – N, P. Sec 23, Sec 24, Sec 25. Sec 26 Unit A,B,F-P. Sec 27 Unit C,D,E,I,N,O,P. Sec 28 Unit A – H, K,L,M,N. Sec 29 Unit A – J, O,P. Sec 30 Unit A,B. Sec 32 A,B. Sec 33 Unit C,D,H,I,O,P. Sec 34, Sec 35, Sec 36.

**T 23S – R 31E**

Sec 2 Unit D,E,J,O. Sec 3 – Sec 7. Sec 8 Unit A – G, K – N. Sec 9 Unit A,B,C,D. Sec 10 Unit D,P. Sec 11 Unit G,H,I,J,M,N,O,P. Sec 12 Unit E,L,K,M,N. Sec 13 Unit C,D,E,F,G,J,K,L,M,N,O. Sec 14. Sec 15 Unit A,B,E – P. Sec 16 Unit I, K – P. Sec 17 Unit B,C,D,E, I – P. Sec 18 – Sec 23. Sec 24 Unit B – G, K,L,M,N. Sec 25 Unit B – G, J,K,L. Sec 26 – Sec 34. Sec 35 Unit C,D,E.

**T 24S – R 29E**

Sec 2 Unit A, B, C, D. Sec 3 Unit A

**T 24S – R 30E**

Sec 1 Unit A – H, J – N. Sec 2, Sec 3. Sec 4 Unit A,B,F – K, M,N,O,P. Sec 9 Unit A – L. Sec 10 Unit A – L, O,P. Sec 11. Sec 12 Unit D,E,L. Sec 14 Unit B – G. Sec 15 Unit A,B,G,H.

**T 24S – R 31E**

Sec 3 Unit B – G, J – O. Sec 4. Sec 5 Unit A – L, P. Sec 6 Unit A – L. Sec 9 Unit A – J, O,P. Sec 10 Unit B – G, K – N. Sec 35 Unit E – P. Sec 36 Unit E,K,L,M,N.

**T 25S – R 31E**

Sec 1 Unit C,D,E,F. Sec 2 Unit A – H.

**District I**

1625 N. French Dr., Hobbs, NM 88240  
Phone:(575) 393-6161 Fax:(575) 393-0720

**District II**

811 S. First St., Artesia, NM 88210  
Phone:(575) 748-1283 Fax:(575) 748-9720

**District III**

1000 Rio Brazos Rd., Aztec, NM 87410  
Phone:(505) 334-6178 Fax:(505) 334-6170

**District IV**

1220 S. St Francis Dr., Santa Fe, NM 87505  
Phone:(505) 476-3470 Fax:(505) 476-3462

**State of New Mexico**  
**Energy, Minerals and Natural Resources**  
**Oil Conservation Division**  
**1220 S. St Francis Dr.**  
**Santa Fe, NM 87505**

CONDITIONS

Action 57945

**CONDITIONS**

Operator: EOG RESOURCES INC P.O. Box 2267 Midland, TX 79702	OGRID: 7377
	Action Number: 57945
	Action Type: [C-103] NOI Plug & Abandon (C-103F)

**CONDITIONS**

Created By	Condition	Condition Date
gcordero	None	10/28/2021