

**District I**  
1625 N. French Dr., Hobbs, NM 88240  
Phone: (575) 393-6161 Fax: (575) 393-0720

**District II**  
811 S. First St., Artesia, NM 88210  
Phone: (575) 748-1283 Fax: (575) 748-9720

**District III**  
1000 Rio Brazos Road, Aztec, NM 87410  
Phone: (505) 334-6178 Fax: (505) 334-6170

**District IV**  
1220 S. St. Francis Dr., Santa Fe, NM 87505  
Phone: (505) 476-3460 Fax: (505) 476-3462

**State of New Mexico**  
**Energy Minerals and Natural Resources**  
**Oil Conservation Division**  
**1220 South St. Francis Dr.**  
**Santa Fe, NM 87505**

Form C-101  
Revised July 18, 2013

☐ AMENDED REPORT

## APPLICATION FOR PERMIT TO DRILL, RE-ENTER, DEEPEN, PLUGBACK, OR ADD A ZONE

<sup>1</sup> Operator Name and Address Occidental Permian LTD PO Box 4294 Houston, TX 77210		<sup>2</sup> OGRID Number 157984
		<sup>3</sup> API Number 30-025-22915
<sup>4</sup> Property Code 330178	<sup>5</sup> Property Name W D GRIMES NCT A	<sup>6</sup> Well No. 018

### 7. Surface Location

UL - Lot F	Section 32	Township 18S	Range 38E	Lot Idn	Feet from 1650	N/S Line NORTH	Feet From 2080	E/W Line WEST	County LEA
---------------	---------------	-----------------	--------------	---------	-------------------	-------------------	-------------------	------------------	---------------

### 8. Proposed Bottom Hole Location

UL - Lot	Section	Township	Range	Lot Idn	Feet from	N/S Line	Feet From	E/W Line	County
----------	---------	----------	-------	---------	-----------	----------	-----------	----------	--------

### 9. Pool Information

Pool Name HOBBS;GRAYBURG-SAN ANDRES	Pool Code 31920
--	--------------------

### Additional Well Information

<sup>11</sup> Work Type PLUG BACK/CTI	<sup>12</sup> Well Type OIL/CONVERT TO INJECTION	<sup>13</sup> Cable/Rotary	<sup>14</sup> Lease Type FEE	<sup>15</sup> Ground Level Elevation 3637'
<sup>16</sup> Multiple NO	<sup>17</sup> Proposed Depth CIBP @5728' + 100 sx CMT	<sup>18</sup> Formation SAN ANDRES	<sup>19</sup> Contractor	<sup>20</sup> Spud Date 10/30/2021
Depth to Ground water		Distance from nearest fresh water well		Distance to nearest surface water

☒ We will be using a closed-loop system in lieu of lined pits

### 21. Proposed Casing and Cement Program

Type	Hole Size	Casing Size	Casing Weight/ft	Setting Depth	Sacks of Cement	Estimated TOC
SURF	17 1/2"	13 3/8"	48	351	335	SURF
INT	11"	8 5/8"	32	3799	500	SURF
PROD	7 7/8"	5 1/2"	15.5	6019	505	2470

### Casing/Cement Program: Additional Comments

Plugback to Hobbs; Grayburg/San Andres and CTI. C108 Approval 10/19/21 Administrative Order PMX-296 (OCD Order R-6199)

### 22. Proposed Blowout Prevention Program

Type	Working Pressure	Test Pressure	Manufacturer
ANNULAR	5000	3000	

<sup>23</sup> I hereby certify that the information given above is true and complete to the best of my knowledge and belief. I further certify that I have complied with 19.15.14.9 (A) NMAC <input checked="" type="checkbox"/> and/or 19.15.14.9 (B) NMAC <input checked="" type="checkbox"/> , if applicable. Signature: <i>Roni Mathew</i>		<b>OIL CONSERVATION DIVISION</b>	
Printed name: Roni Mathew		Approved By:	
Title: Regulatory Analyst Sr.		Title:	
E-mail Address: roni_mathew@oxy.com		Approved Date:	Expiration Date:
Date: 11/1/2021	Phone: 713-215-7827	Conditions of Approval Attached	

District I  
1625 N. French Dr., Hobbs, NM 88240  
Phone: (575) 393-6161 Fax: (575) 393-0720  
District II  
811 S. First St., Artesia, NM 88210  
Phone: (575) 748-1283 Fax: (575) 748-9720  
District III  
1000 Rio Brazos Road, Aztec, NM 87410  
Phone: (505) 334-6178 Fax: (505) 334-6170  
District IV  
1220 S. St. Francis Dr., Santa Fe, NM 87505  
Phone: (505) 476-3460 Fax: (505) 476-3462

State of New Mexico  
Energy, Minerals & Natural Resources Department  
OIL CONSERVATION DIVISION  
1220 South St. Francis Dr.  
Santa Fe, NM 87505

Form C-102  
Revised August 1, 2011  
Submit one copy to appropriate  
District Office  
☐ AMENDED REPORT

## WELL LOCATION AND ACREAGE DEDICATION PLAT

<sup>1</sup> API Number 30-025-22915	<sup>2</sup> Pool Code 31920	<sup>3</sup> Pool Name HOBBS; GRAYBURG-SAN ANDRES
<sup>4</sup> Property Code 330178	<sup>5</sup> Property Name W D GRIMES NCT A	<sup>6</sup> Well Number 018
<sup>7</sup> OGRID No. 157984	<sup>8</sup> Operator Name OCCIDENTAL PERMIAN LTD.	<sup>9</sup> Elevation 3637' GL

<sup>10</sup> Surface Location

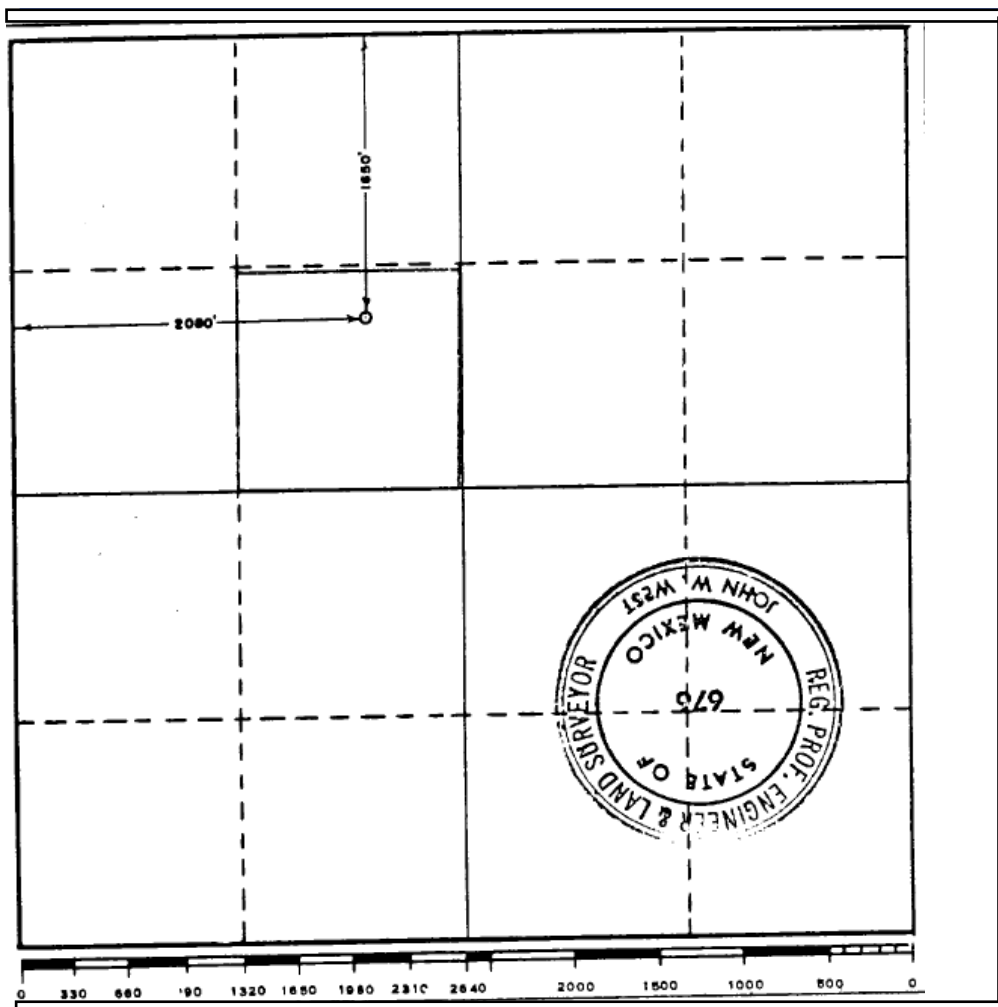
UL or lot no.	Section	Township	Range	Lot Idn	Feet from the	North/South line	Feet from the	East/West line	County
F	32	18S	38E		1650	NORTH	2080	WEST	LEA

<sup>11</sup> Bottom Hole Location If Different From Surface

UL or lot no.	Section	Township	Range	Lot Idn	Feet from the	North/South line	Feet from the	East/West line	County

<sup>12</sup> Dedicated Acres 40	<sup>13</sup> Joint or Infill	<sup>14</sup> Consolidation Code	<sup>15</sup> Order No. C108 ADMIN ORDER PMX-296
-------------------------------------	-------------------------------	----------------------------------	---

No allowable will be assigned to this completion until all interests have been consolidated or a non-standard unit has been approved by the division.

<sup>17</sup> OPERATOR CERTIFICATION

I hereby certify that the information contained herein is true and complete to the best of my knowledge and belief, and that this organization either owns a working interest or unleased mineral interest in the land including the proposed bottom hole location or has a right to drill this well at this location pursuant to a contract with an owner of such a mineral or working interest, or to a voluntary pooling agreement or a compulsory pooling order heretofore entered by the division.

*Roni Mathew*

11/1/2021

Signature

Date

Roni Mathew

Printed Name

roni\_mathew@oxy.com

E-mail Address

<sup>18</sup> SURVEYOR CERTIFICATION

I hereby certify that the well location shown on this plat was plotted from field notes of actual surveys made by me or under my supervision, and that the same is true and correct to the best of my belief.

Date of Survey

Signature and Seal of Professional Surveyor:

Certificate Number

## INSTRUCTIONS

This form is to be filed with the appropriate District Office of the Commission not later than 20 days after the completion of any newly-drilled or deepened well. It shall be accompanied by one copy of all electrical and radio-activity logs run on the well and a summary of all special tests conducted, including drill stem tests. All depths reported shall be measured depths. In the case of directionally drilled wells, true vertical depths shall also be reported. For multiple completions, Items 30 through 34 shall be reported for each zone. The form is to be filed in quintuplicate except on state land, where six copies are required. See Rule 11.5.

## INDICATE FORMATION TOPS IN CONFORMANCE WITH GEOGRAPHICAL SECTION OF STATE

## Southeastern New Mexico

## Northwestern New Mexico

T. Anhy _____ 1470	T. Canyon _____	T. Ojo Alamo _____	T. Penn. "B" _____
T. Salt _____	T. Strawn _____	T. Kirtland-Fruitland _____	T. Penn. "C" _____
B. Salt _____	T. Atoka _____	T. Pictured Cliffs _____	T. Penn. "D" _____
T. Yates _____ 2655	T. Miss _____	T. Cliff House _____	T. Leadville _____
T. 7 Rivers _____	T. Devonian _____	T. Menefee _____	T. Madison _____
T. Queen _____ 3336	T. Silurian _____	T. Point Lockout _____	T. Elbert _____
T. Grayburg _____	T. Montoya _____	T. Mancos _____	T. McCracken _____
T. San Andres _____ 4015	T. Simpson _____	T. Gallup _____	T. Ignacio Qtzte _____
T. Glorieta _____ 5334	T. McKee _____	Base Greenhorn _____	T. Granite _____
T. Paddock _____	T. Ellersburger _____	T. Dakota _____	T. _____
T. Blinberry _____ 5752	T. Gr. Wash _____	T. Morrison _____	T. _____
T. Tubb _____	T. Granite _____	T. Todilto _____	T. _____
T. Drinkard _____	T. Delaware Sand _____	T. Entrada _____	T. _____
T. Abo _____	T. Bone Springs _____	T. Wingate _____	T. _____
T. Wolfcamp _____	T. _____	T. Chinle _____	T. _____
T. Penn. _____	T. _____	T. Permian _____	T. _____
T. Cisco (Bough C) _____	T. _____	T. Penn. "A" _____	T. _____

## FORMATION RECORD (Attach additional sheets if necessary)

From	To	Thickness in Feet	Formation	From	To	Thickness in Feet	Formation
0	1470		Sand - RD				
	1590		Anhy				
	2485		Salt				
	2655		Anhy, Dolo & Salt				
	4015		Dolo & sand				
	5334		Dolo				
	5500		Dolo & sand				
	6020		Dolo.				

**W D GRIMES NCT A #018**  
**API # 30-025-22915**

Planned Procedure

1. MIRU PU
2. RIH 2-7/8 open end WS, Tag CIBP @ 5728' and spot ~ 100 sxs of cement. WOC and tag TOC and report depth.
3. POOH with WS and Prepare to perforate casing
4. RU WL Perforation unit and perf from ~ 4000' to 4500' (Gross Interval), POOH and LD WL
5. RIH with PPI tool and Acid Stim new perfs with ~ 5000 gal of 15% HCL, POOH and LD PPI Tool
6. RIH w/ injection packer and set at ~ 3950' POOH and LD WS
7. RU WL, run inspection log with CBL/caliper from 3950' to surface
8. RIH with injection tubing, latch into packer.
9. Run MIT Chart
10. RD PU

## WELLBORE DIAGRAM

WELL# Grimes NCT-A #18

(updated: 02/24/2021 CER)

API# 30-025-22915

Revision 0

Zone: San Andres

GL elev

3637'

Spud: 02/1969

## Grimes NCT-A #18

## CEMENT

## DEVIATION SURVEYS

Surface CasingCement with 335 sx Class C with 2% Ca  
Cl<sub>2</sub>

CIRCULATED TO SURFACE

Intermediate CasingCement with 300 sx Class C with 16% gel,  
2% salt, 0.3% CFR-2 and 200 sxs of Class  
C neat 2% Ca Cl<sub>2</sub>

TOC no reported

Production CasingCemented with 40 sx of Class C with 16% gel, 2% Salt, 0.3%  
CFR-2 and 200 sx of Class C with 4% hel and 265 sxs of Class  
H with 3/4% CFR-2

TOC AT 2470' Temp Survey

CIBP set @ 5728  
Capped w/ 2 sx of cement

Perf Interval: 5772' - 5957'

5772- 5774', 5808' - 5810', 5862' - 5864', 5926' - 5928'  
 Perfs: 5848' - 5851', 5856' - 5858', 5884' - 5886', 5908' - 5910'  
 5915' - 5918', 5943' - 5945', 5947', 5951', 5953', 5955', 5957'

5-1/2" 15.5# set at 6050'

## WELLBORE DIAGRAM

(updated: 02/24/2021 CER)

Revision 0

WELL# Grimes NCT-A #18

API# 30-025-22915

Zone: San Andres

GL elev

3637'

Spud: 02/1969

## Grimes NCT-A #18

## CEMENT

## DEVIATION SURVEYS

Surface CasingCement with 335 sx Class C with 2% Ca  
Cl<sub>2</sub>

CIRCULATED TO SURFACE

Intermediate CasingCement with 300 sx Class C with 16% gel,  
2% salt, 0.3% CFR-2 and 200 sxs of Class  
C neat 2% Ca Cl<sub>2</sub>

TOC no reported

Production CasingCemented with 40 sx of Class C with 16% gel, 2% Salt, 0.3%  
CFR-2 and 200 sx of Class C with 4% hel and 265 sxs of Class  
H with 3/4% CFR-2

TOC AT 2470' Temp Survey

CIBP set @ 5728  
Capped w/ 2 sx of cementPerf Interval: 5772' - 5957'5772- 5774', 5808' - 5810', 5862' - 5864', 5926' - 5928'  
5848' - 5851', 5856' - 5858', 5884' - 5886', 5908' - 5910'  
5915' - 5918', 5943' - 5945', 5947', 5951', 5953', 5955', 5957'

17-1/2" hole

13-3/8" 48# set at 351'

11" hole

8-5/8" 24, 32# set at 3799'

Set Injection Packer @ ~ 3950'

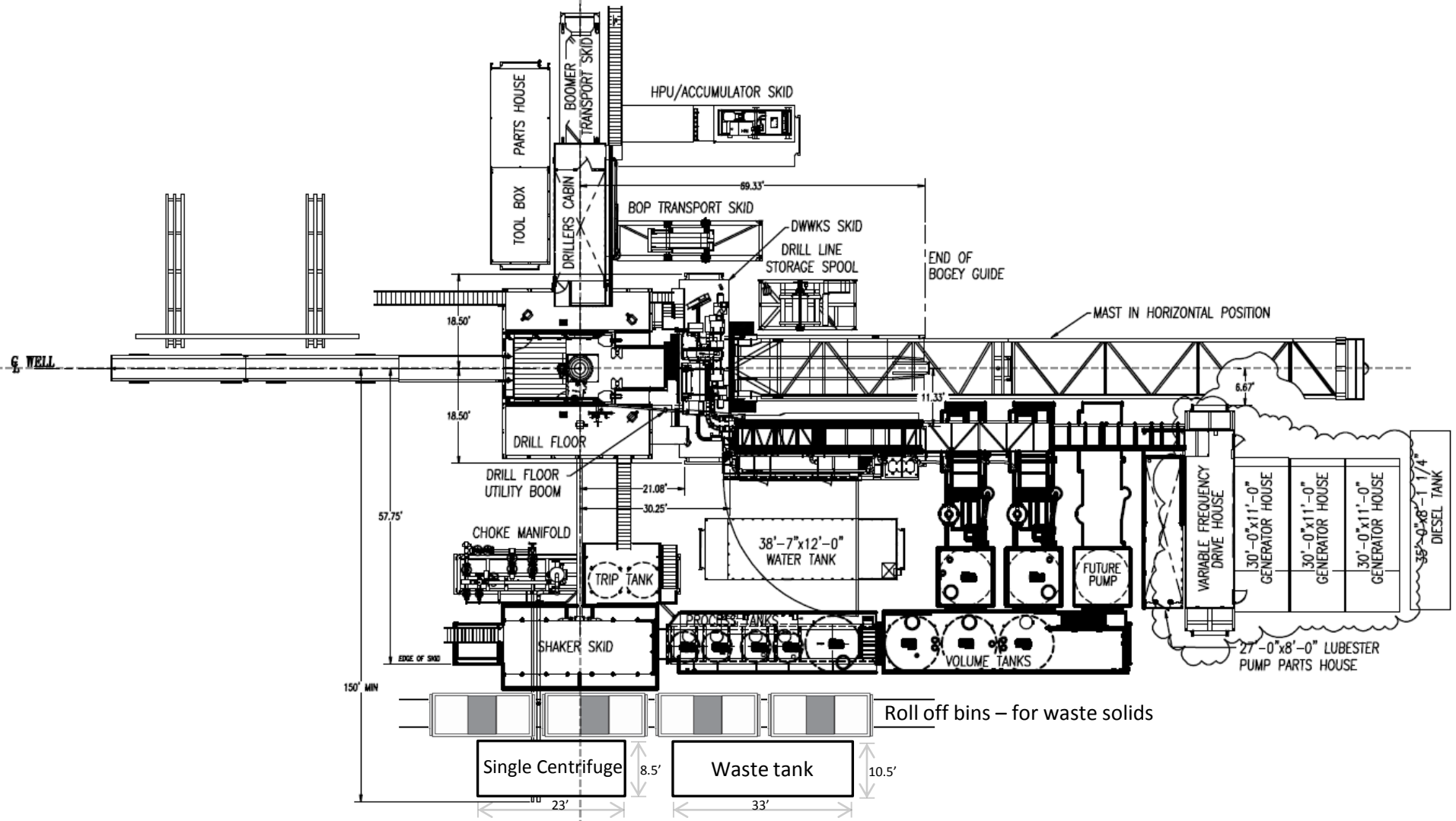
5-1/2" x 2 3/8" 14-20# AS1-X Double Grip  
Packer

7-7/8" Hole

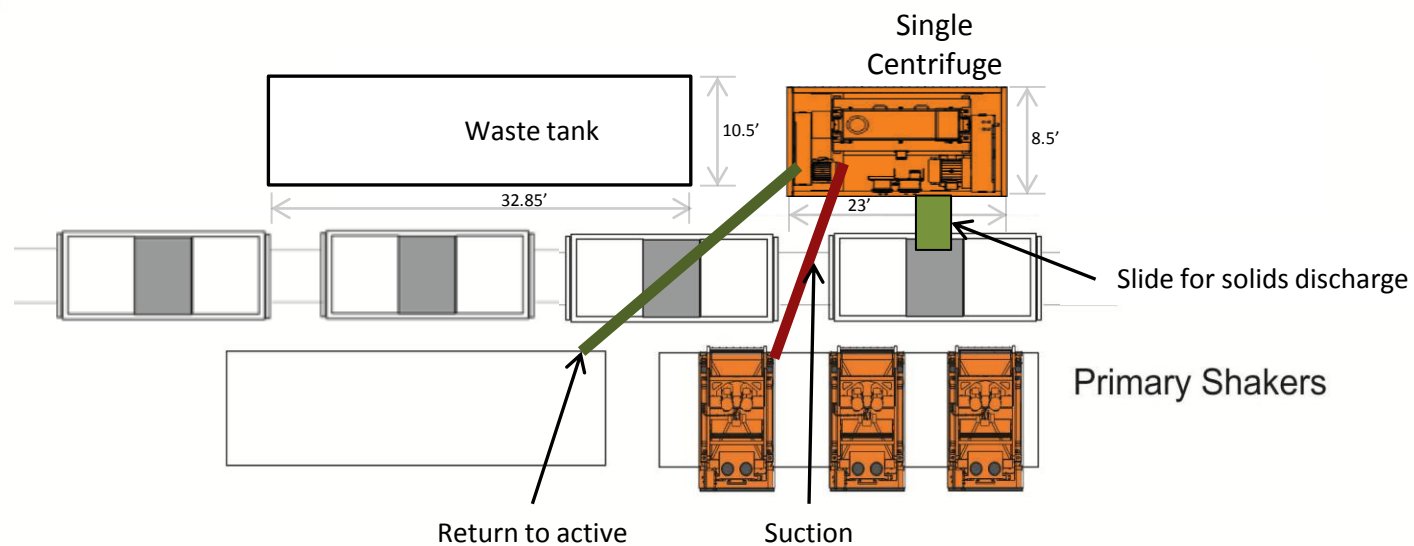
Perf Interval from ~ 4000' to 4500'  
Gross IntervalBottom plugSpot ~100 sxs on top of existing CIBP (5728').  
Tag TOC and report

5-1/2" 15.5# set at 6050'

Oxy Single Centrifuge  
Closed Loop System – New  
Mexico Flex III  
May 28, 2013



Oxy



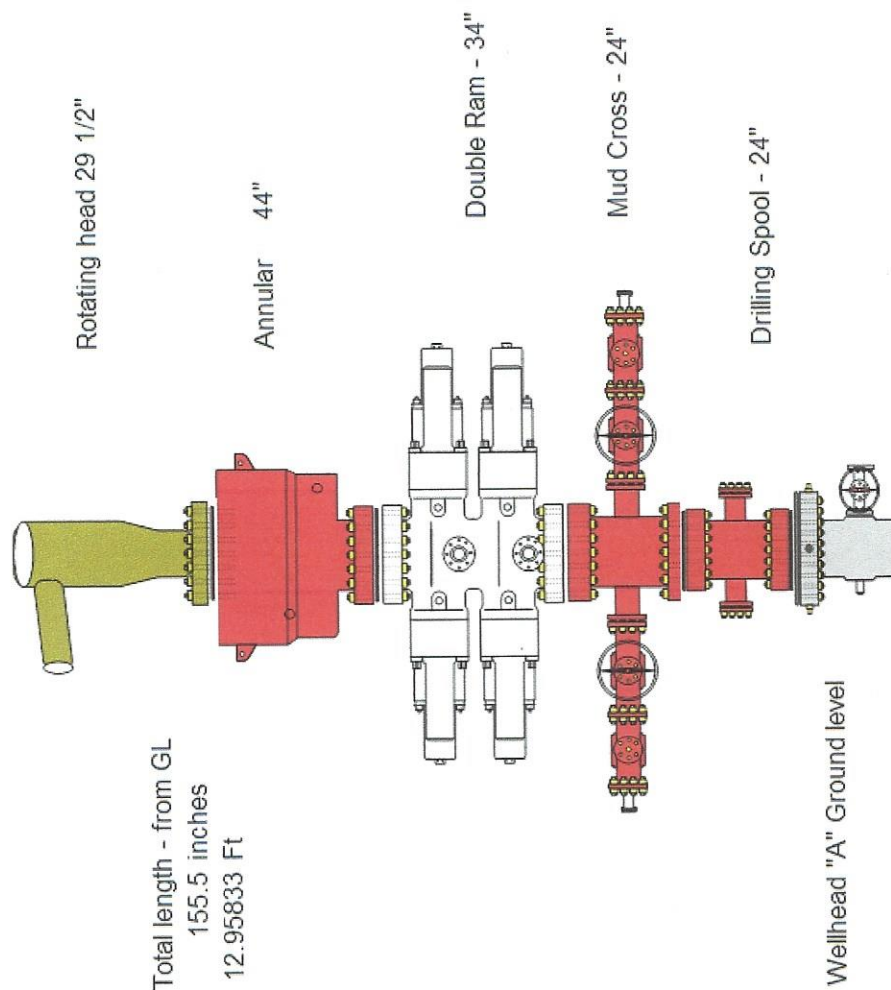
Well Head



Oxy Single Centrifuge  
Closed Loop System – New  
Mexico Flex III

May 28, 2013

# Current BOP heights – 11" 5K



**District I**  
1625 N. French Dr., Hobbs, NM 88240  
Phone:(575) 393-6161 Fax:(575) 393-0720  
**District II**  
811 S. First St., Artesia, NM 88210  
Phone:(575) 748-1283 Fax:(575) 748-9720  
**District III**  
1000 Rio Brazos Rd., Aztec, NM 87410  
Phone:(505) 334-6178 Fax:(505) 334-6170  
**District IV**  
1220 S. St Francis Dr., Santa Fe, NM 87505  
Phone:(505) 476-3470 Fax:(505) 476-3462

**State of New Mexico**  
**Energy, Minerals and Natural Resources**  
**Oil Conservation Division**  
**1220 S. St Francis Dr.**  
**Santa Fe, NM 87505**

COMMENTS  
  
Action 57063

COMMENTS

Operator: OCCIDENTAL PERMIAN LTD P.O. Box 4294 Houston, TX 772104294	OGRID: 157984
	Action Number: 57063
	Action Type: [C-101] Drilling Non-Federal/Indian (APD)

COMMENTS

Created By	Comment	Comment Date
pkautz	Hold for corrected forms	11/1/2021

**District I**  
1625 N. French Dr., Hobbs, NM 88240  
Phone:(575) 393-6161 Fax:(575) 393-0720  
**District II**  
811 S. First St., Artesia, NM 88210  
Phone:(575) 748-1283 Fax:(575) 748-9720  
**District III**  
1000 Rio Brazos Rd., Aztec, NM 87410  
Phone:(505) 334-6178 Fax:(505) 334-6170  
**District IV**  
1220 S. St Francis Dr., Santa Fe, NM 87505  
Phone:(505) 476-3470 Fax:(505) 476-3462

**State of New Mexico**  
**Energy, Minerals and Natural Resources**  
**Oil Conservation Division**  
**1220 S. St Francis Dr.**  
**Santa Fe, NM 87505**

CONDITIONS  
  
Action 57063

CONDITIONS

Operator: OCCIDENTAL PERMIAN LTD P.O. Box 4294 Houston, TX 772104294	OGRID: 157984
	Action Number: 57063
	Action Type: [C-101] Drilling Non-Federal/Indian (APD)

CONDITIONS

Created By	Condition	Condition Date
pkautz	None	11/1/2021