

Well Name: TRIBAL C	Well Location: T26N / R3W / SEC 6 / SWSW /	County or Parish/State: RIO ARRIBA / NM
Well Number: 1	Type of Well: CONVENTIONAL GAS WELL	Allottee or Tribe Name: JICARILLA APACHE
Lease Number: JIC97	Unit or CA Name:	Unit or CA Number:
US Well Number: 3003906655	Well Status: Abandoned	Operator: HILCORP ENERGY COMPANY

Subsequent Report

Sundry ID: 2634669

Type of Submission: Subsequent Report

Type of Action: Plug and Abandonment

Date Sundry Submitted: 09/16/2021

Time Sundry Submitted: 01:48

Date Operation Actually Began: 08/11/2021

Actual Procedure: See attached P&A operations.

SR Attachments

Actual Procedure

Current_Schematic_20210916134837.pdf

Tribal_C_1_P_A_SR_20210916134836.pdf

Well Name: TRIBAL C

Well Location: T26N / R3W / SEC 6 / SWSW /

County or Parish/State: RIO ARRIBA / NM

Well Number: 1

Type of Well: CONVENTIONAL GAS WELL

Allottee or Tribe Name: JICARILLA APACHE

Lease Number: JIC97

Unit or CA Name:

Unit or CA Number:

US Well Number: 3003906655

Well Status: Abandoned

Operator: HILCORP ENERGY COMPANY

Operator Certification

I certify that the foregoing is true and correct. Title 18 U.S.C. Section 1001 and Title 43 U.S.C. Section 1212, make it a crime for any person knowingly and willfully to make to any department or agency of the United States any false, fictitious or fraudulent statements or representations as to any matter within its jurisdiction. Electronic submission of Sundry Notices through this system satisfies regulations requiring a submission of Form 3160-5 or a Sundry Notice.

Operator Electronic Signature: KANDIS ROLAND

Signed on: SEP 16, 2021 01:48 PM

Name: HILCORP ENERGY COMPANY

Title: Operation Regulatory Tech

Street Address: 382 Road 3100

City: Farmington

State: NM

Phone: (505) 599-3400

Email address: kroland@hilcorp.com

Field Representative

Representative Name:

Street Address:

City:

State:

Zip:

Phone:

Email address:

BLM Point of Contact

BLM POC Name: KENNETH G RENNICK

BLM POC Title: Petroleum Engineer

BLM POC Phone: 5055647742

BLM POC Email Address: krennick@blm.gov

Disposition: Accepted

Disposition Date: 10/20/2021

Signature: Kenneth Rennick

Tribal C 1
30-039-06655
P&A SR

8/11/2021 –MIRU. SIBHP – 0 PSI, SICP – 0 PSI, SITP – 0 PSI. ND WH, NU BOP. TOO H w/ tbg. RIH w/ RBP retrieving head to 2700'. SDFN.

8/12/2021 – SIBHP – 0 PSI, SICP – 0 PSI, SITP – 0 PSI. P/U tbg. Tag fill. C/O well. SDFN

8/13/2021 - SIBHP – 0 PSI, SICP – 0 PSI, SITP – 0 PSI. TOO H w/ tbg, TIH w/ tbg, tag fill. C/O well. P/U RBP retrieving head and TIH w/ tbg. Latch onto RBP, open bypass and equalize. Release RBP and TOO H w/ tbg. L/D RBP. TIH w/ csg scraper to 3500'. SDFN

8/16/2021 - SIBHP – 0 PSI, SICP – 340 PSI, SITP – 0 PSI. P/U tbg and run csg scraper to 7872'. TOO H w/ tbg, L/D csg scraper. P/U 5 1/2" cmt retainer. Set retainer @ 7856'. Load tbg w/ 20 bbls and PT. Good test witnessed by Jimmie Dobson, BLM. Sting out of retainer. Pump 105 bbls to load csg and circ. TOO H w/ tbg to above liner top. SDFN.

8/17/2021 – SIBHP – 0 PSI, SICP – 70 PSI, SITP – 0 PSI. TOO H w/ tbg. R/U wireline. Run CBL from 7856' to 3833'. TOC @ 2616'. RD wireline. **Verbal approval from Jimmie Dobson, BLM and Moncia Kuehling (OCD to change Plug 2, Inside & Outside (6721' – 6871') shoot squeeze holes @ 6871' and change to Plug 4 Inside & Outside (5260' – 5410') Shoot sqz holes @ 5410')**. TIH w/ tbg to 7856'. **Plug 1 (DK) Mix and pump: 27 sxs Class G, 15.8 PPG. Displace with FW.** TOO H w/ tbg to above liner top. SDFN.

8/18/2021 – SIBHP – 0 PSI, SICP – 15 PSI, SITP – 0 PSI. TIH w/ tbg. Tag plug @ 7720'. **Verbal approval from Jimmie Dobson, BLM and Monica Kuehling to proceed with plug # 2.** L/D tbg to 6821'. TOO H w/ tbg. R/U wireline. Perf sqz holes @ 6871'. TIH w/ cmt retainer and set @ 6821'. Load well w/ 13 bbls. **Plug 2 (Gallup Top below retainer) Mix and pump: 28 sxs (22 outside, 6 under cicr) class G, 15.8 PPG. Displace w/ 5.7 bbls FW.** Sting out of retainer. **Plug 2A (Gallup Top above retainer) Mix and pump: 25 sxs Class G, 15.8 PPG. Displace w/ 5.7 bbls FW.** TOO H w/ tbg. SDFN.

8/19/2021 - SIBHP – 0 PSI, SICP – 0 PSI, SITP – 0 PSI. TIH w/ tbg, tag plug 2 @ 6680'. L/D tbg @ 6061'. **Plug 3 (Mancos Top) Mix and pump: 30 sxs Class G, 15.8 PPG. Displace w/ 8 bbls FW.** LD 9 joints. TOO H w/ tbg above Liner Top. WOC. TIH w/ tbg. Tag Plug 3 @ 5930'. L/D tbg to 5360'. TOO H w/ tbg. SDFN.

8/20/2021 - SIBHP – 0 PSI, SICP – 0 PSI, SITP – 0 PSI. R/U wireline. Perf Sqz holes @ 5410'. P/U cmt retainer and set @ 5360'. Load well w/ 12.5 bbls. **Plug 4 (Mesaverde Top 5410' – 5260') Mix and pump: 28 sxs Class G (6 below, 22 Outside), 15.8 PPG. Displace w/ 5.7 bbls FW.** Sting out of retainer. **Plug 4A (Above cmt retainer) Mix and pump: 30 sxs Class G, 15.8 PPG. Displace with 18.5 bbls of FW.** L/D 10 jts. TOO H w/ tbg. WOC. TIH w/ Tag sub. Tag Plug 4, good. LD tbg to 4049'. **Plug 5 (Liner top and 7 5/8' csg shoe (4409' – 3699')) Mix and pump: 57 sxs Class G, 15.8 PPG. Displace w/ 2 bbls FW.** L/D 12 jts. TOO H w/ tbg to 2343'. SDFN.

8/23/2021 - SIBHP – 0 PSI, SICP – 0 PSI, SITP – 0 PSI. TIH to tag Plug 5 @ 3718', good tag. TOO H. TIH w/ csg scraper to 3682'. TOO H. TIH and set retainer @ 3652'. Load and roll the hole w/ 170 bbls of water. TOO H and remove stinger. R/U wireline. RIH to retainer and pull CBL. **Verbal approval from Jimmie Dobson, BLM and Monica Kuehling (change Plug 6 to Inside Plug (3073' – 3652')). Plug 7 Inside &**

Outside Plug (1930' – 2080') Shoot sqz holes @ 2080'. Plug 8 Inside Plug (0' – 347')). TIH w/ Tag/Circ Sub to retainer @ 3652'. **Plug 6 (Fruitland, Kirtland, Ojo Alamo 3073' – 3652') Mix and pump: 135 sxs Class G cmt.** L/D 20 jts. SIW. SDFN.

8/24/2021 - SIBHP – 0 PSI, SICP – 0 PSI, SITP – 0 PSI. TIH tag plug 6 @ 3060'. Good tag. L/D 33 jts. R/U wireline. RIH and shoot sqz holes @ 2080'. **Plug 7 (Nacimiento 1927' – 2131') Mix and pump: 47 sxs Class G cmt w/ 2% CaCl₂.** L/D 7 jts. WOC. P/U tbg and tag plug 7 @ 1933', good tag. L/D 49 jts. **Surface Plug. Pump with 11 jts in hole from 364' w/ 95 sxs Class G cmt.** L/D tbg. WOC. N/D BOP. Install WH flange and valve to secure well. SDFN.

8/25/2021 – Cut off WH. Install P&A marker plate. Top off csg w/ 12 sxs Class G cmt. RR

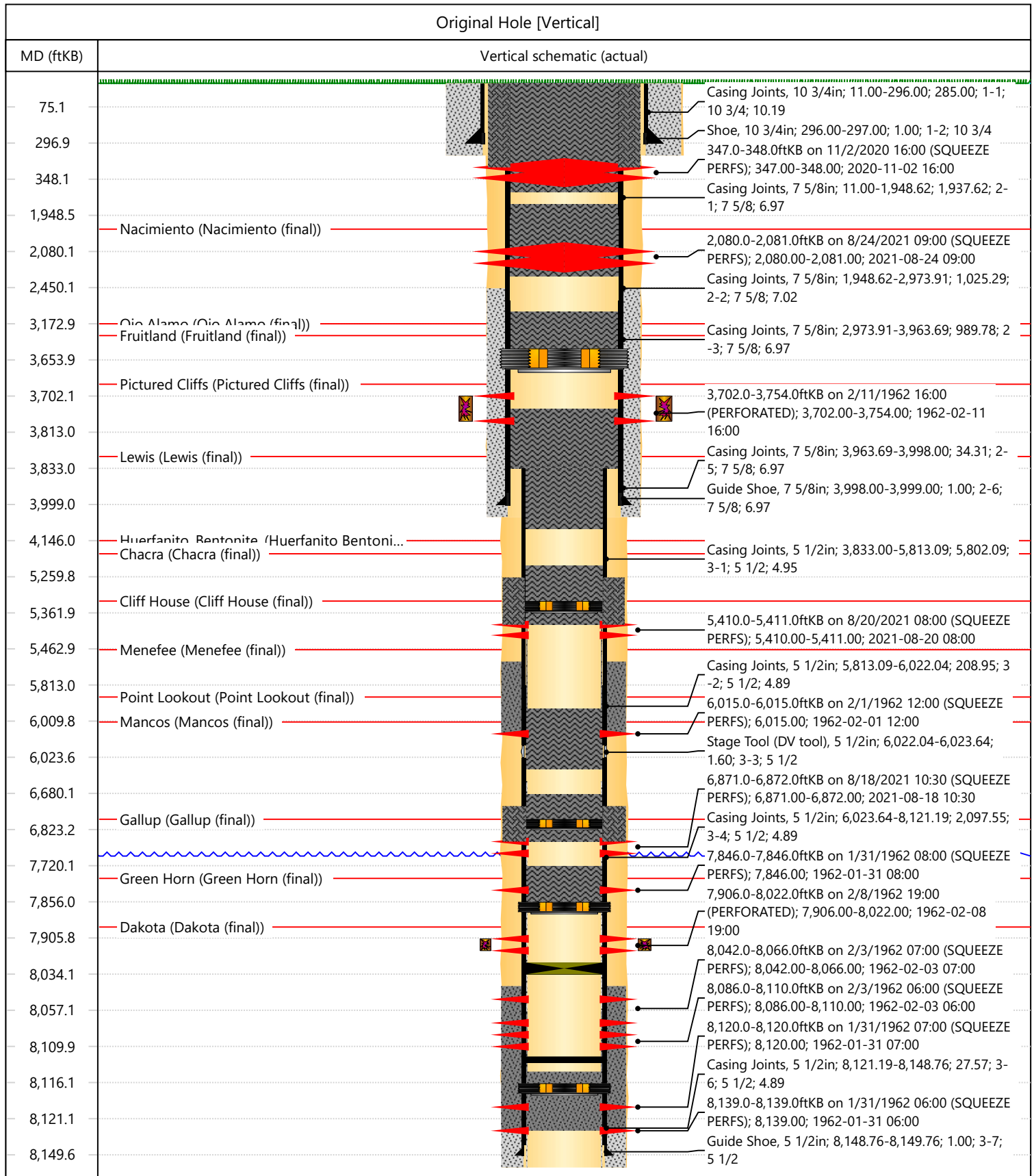
The subject well was plugged and abandoned on 8/25/2021



Current Schematic

Well Name: **TRIBAL C #1**

API / UWI 3003906655	Surface Legal Location M-6-26N-3W	Field Name BASIN	Route 1414	State/Province NEW MEXICO	Well Configuration Type Vertical
Ground Elevation (ft) 6,948.00	Original KB/RT Elevation (ft) 6,959.00	KB-Ground Distance (ft) 11.00	KB-Casing Flange Distance (ft)	KB-Tubing Hanger Distance (ft)	



District I
 1625 N. French Dr., Hobbs, NM 88240
 Phone:(575) 393-6161 Fax:(575) 393-0720

District II
 811 S. First St., Artesia, NM 88210
 Phone:(575) 748-1283 Fax:(575) 748-9720

District III
 1000 Rio Brazos Rd., Aztec, NM 87410
 Phone:(505) 334-6178 Fax:(505) 334-6170

District IV
 1220 S. St Francis Dr., Santa Fe, NM 87505
 Phone:(505) 476-3470 Fax:(505) 476-3462

State of New Mexico
Energy, Minerals and Natural Resources
Oil Conservation Division
1220 S. St Francis Dr.
Santa Fe, NM 87505

CONDITIONS
 Action 57174

CONDITIONS

Operator: HILCORP ENERGY COMPANY 1111 Travis Street Houston, TX 77002	OGRID: 372171
	Action Number: 57174
	Action Type: [C-103] Sub. Plugging (C-103P)

CONDITIONS

Created By	Condition	Condition Date
mkuehling	None	11/3/2021