

Well Name: JICARILLA APACHE B	Well Location: T24N / R5W / SEC 20 / SENW /	County or Parish/State: RIO ARRIBA / NM
Well Number: 9E	Type of Well: CONVENTIONAL GAS WELL	Allottee or Tribe Name: JICARILLA APACHE
Lease Number: JIC11	Unit or CA Name:	Unit or CA Number:
US Well Number: 3003927726	Well Status: Producing Gas Well	Operator: DJR OPERATING LLC

Subsequent Report

Type of Submission: Subsequent Report	Type of Action: Plug and Abandonment
Date Sundry Submitted: 03/12/2021	Time Sundry Submitted: 11:57
Date Operation Actually Began: 03/04/2021	

Actual Procedure: The subject well was Plugged & Abandoned on 03/04/2021 per the attached detailed Wellbore Diagram and Marker.

SR Attachments

Actual Procedure

Jicarilla_Apache_B_9E_PA_Marker_20210312115635.pdf

Jicarilla_Apache_B_9E_EOWR_20210312115635.pdf

Well Name: JICARILLA APACHE B	Well Location: T24N / R5W / SEC 20 / SENW /	County or Parish/State: RIO ARRIBA / NM
Well Number: 9E	Type of Well: CONVENTIONAL GAS WELL	Allottee or Tribe Name: JICARILLA APACHE
Lease Number: JIC11	Unit or CA Name:	Unit or CA Number:
US Well Number: 3003927726	Well Status: Producing Gas Well	Operator: DJR OPERATING LLC

Operator Certification

I certify that the foregoing is true and correct. Title 18 U.S.C. Section 1001 and Title 43 U.S.C. Section 1212, make it a crime for any person knowingly and willfully to make to any department or agency of the United States any false, fictitious or fraudulent statements or representations as to any matter within its jurisdiction. Electronic submission of Sundry Notices through this system satisfies regulations requiring a submission of Form 3160-5 or a Sundry Notice.

Operator Electronic Signature: FORD	Signed on: MAR 12, 2021 11:57 AM
Name: DJR OPERATING LLC	
Title: Regulatory Specialist	
Street Address: 1700 LINCOLN STREET, SUITE 2800	
City: DENVER	State: CO
Phone: (505) 632-3476	
Email address:	

Field Representative

Representative Name:		
Street Address:		
City:	State:	Zip:
Phone:		
Email address:		

End of Well P&A Report
DJR Operating, LLC
Jicarilla Apache B 9 E
API: 30-039-27726
SENW F-20-24N-5W
Rio Arriba County, NM

Spud Date: 06/03/2005

Plugged Date: 03/04/2021

Dakota

03/02/21: Perfs: 6582' to 6630'. Plug 1: Set CR at 6540', mix and pump 20 sx Class G + 2% CaCl₂ cement through CR into Dakota perfs. Sting out and place 24 sx Class G cement + 2% CaCl₂ on top of CR. (Cement had been pumped up hole during displacement, found TOC at 5260'). PT csg from 5260' to surface to 600 psi, Good test.

3/3/21: Drilled out cement from 5260'. TIH to CR at 6540'. Plug 2: Spot 12 sx Class G cement + 2% CaCl₂ from 6540'. WOC. Tagged at 6386'.

Gallup/Mancos

03/04/21: Perfs: 5426' to 5629'. Plug 3: Spot balanced plug of 100 sx Class G cement from 5681'. WOC. Tagged plug at 4385'.

Mesaverde

03/04/21: Plug 4: Spot balanced plug of 12 sx Class G cement from 3737' to 3632'.

Chacra

03/04/21: Plug 5: Spot balanced plug of 12 sx Class G cement from 2684' to 2570'.

Pictured Cliffs/Fruitland/Kirtland/Ojo Alamo

03/04/21: Plug 6: Spot balanced plug of 55 sx Class G cement from 2239' to 1567'.

Nacimiento

03/04/21: Plug 7: Spot balanced plug of 12 sx Class G cement from 1016' to 912'. Plug 8: Surface casing shoe to surface: Spot balanced plug of 45 sx Class G cement from 431' to surface. TOOH and top off to surface.

P&A MARKER: 24" x 24" steel plate installed at ground level

All cement was class G cement mixed at 15.8 ppg, yield 1.15.

BLM Representative onsite to witness: Leo Pacheco

End of Well P&A Report
DJR Operating, LLC
Jicarilla Apache B 9E
 API # 30-039-27726
 SE/NW, Unit F, Sec 20, T24N, R5W
 Rio Arriba County, NM

GL 6540'
 KB 6552'
 Spud Date 6/3/2005

SURF CSG

Hole size 12.25"
 Csg Size: 8.625"
 Wt: 24#
 Grade: J-55
 ID: 8.097"
 Depth 375'
 Csg cap ft³: 0.3576
 TOC: Surf

FORMATION TOPS

Nacimiento	962'
Ojo Alamo	1617'
Kirtland	1830'
Fruitland	2002'
Pictured Cliffs	2168'
Chacra	2620'
Mesa Verde	3682'
Mancos	4506'
Gallup	5428'
Dakota	6450'

PROD CSG

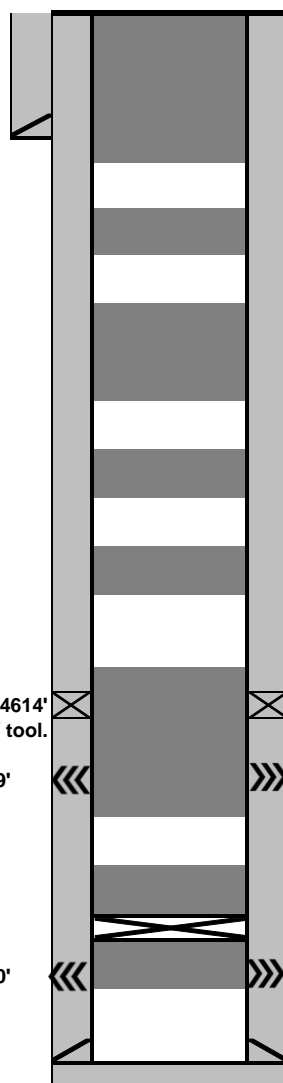
Hole size 7.875"
 Csg Size: 4.5"
 Wt: 10.5#
 Grade: J-55
 ID: 4.052"
 Depth 6992'
 Csg cap ft³: 0.0895
 Csg/Csq Ann ft³: 0.2471
 Csg/OH cap ft³: 0.2278
 TOC: Stg 1 (Calc) 4614'
 TOC: Stg 2 (Calc) Surface

DV Tool at 4614'
 TOC at DV tool.

Gallup Perfs 5426-5629'

Dakota Perfs 6582-6630'

PBTD 6945'
 TD 7000'



**P&A MARKER IS A 24" x 24" STEEL PLATE INSTALLED AT
GROUND LEVEL**

3-04-2021: Plug 8: Surface casing shoe to surface: Spot balanced plug of 45 sx Class G cement from 431' to surface. TOO H and top off to surface.

3-04-2021: Plug 7: Nacimiento: Spot balanced plug of 12 sx Class G cement from 1016' to 912'.

3-04-2021: Plug 6: Pictured Cliffs, Fruitland, Kirtland and Ojo Alamo: Spot balanced plug of 55 sx Class G cement from 2239' to 1567'.

3-04-2021: Plug 5: Chacra: Spot balanced plug of 12 sx Class G cement from 2684' to 2570'.

3-04-2021: Plug 4: Mesaverde: Spot balanced plug of 12 sx Class G cement from 3737' to 3632'.

3-04-2021: Plug 3: Gallup and Mancos: Spot balanced plug of 100 sx Class G cement from 5681'. WOC. Tagged plug at 4385'.

3-03-2021: Plug 2: Dakota: Spot 12 sx Class G cement + 2% CaCl₂ ffrom 6540'. WOC. Tagged at 6386'.

3-03-2021: Drilled out cement from 5260', TIH to CR @ 6540'

3-02-2021: Plug 1: Dakota: Set CR at 6540', mix and pump 20 sx Class G + 2% CaCl₂ cement through CR into Dakota perfs. Sting out and place 24 sx Class G cement + 2% CaCl₂ on top of CR. (Cement had been pumped up hole during displacement, found TOC at 5260'). PT csg from 5260' to surface to 600 psi, Good test.

All cement was class G cement mixed at 15.8 ppg, yield 1.15.

Regulatory Representative, Leo Pacheco, BLM
 GPS Coordinates: Lat; 36.301647, Long; -107.388684

District I
1625 N. French Dr., Hobbs, NM 88240
Phone:(575) 393-6161 Fax:(575) 393-0720
District II
811 S. First St., Artesia, NM 88210
Phone:(575) 748-1283 Fax:(575) 748-9720
District III
1000 Rio Brazos Rd., Aztec, NM 87410
Phone:(505) 334-6178 Fax:(505) 334-6170
District IV
1220 S. St Francis Dr., Santa Fe, NM 87505
Phone:(505) 476-3470 Fax:(505) 476-3462

State of New Mexico
Energy, Minerals and Natural Resources
Oil Conservation Division
1220 S. St Francis Dr.
Santa Fe, NM 87505

CONDITIONS

Action 55507

CONDITIONS

Operator: DJR OPERATING, LLC 1 Road 3263 Aztec, NM 87410	OGRID: 371838
	Action Number: 55507
	Action Type: [C-103] Sub. Plugging (C-103P)

CONDITIONS

Created By	Condition	Condition Date
mkuehling	submit letter from Jicarilla Apache Tribe approving grade level marker within 30 days	11/4/2021