

Office
 District I - (575) 393-6161
 1625 N. French Dr., Hobbs, NM 88240
 District II - (575) 748-1283
 811 S. First St., Artesia, NM 88210
 District III - (505) 334-6178
 1000 Rio Brazos Rd., Aztec, NM 87410
 District IV - (505) 476-3460
 1220 S. St. Francis Dr., Santa Fe, NM
 87505

State of New Mexico
 Energy, Minerals and Natural Resources

Form C-103
 Revised July 18, 2013

OIL CONSERVATION DIVISION
 1220 South St. Francis Dr.
 Santa Fe, NM 87505

WELL API NO.
 30-007-20892

5. Indicate Type of Lease

STATE ☐ FEE ☒

6. State Oil & Gas Lease No.

7. Lease Name or Unit Agreement Name
 VPR A

8. Well Number
 500

9. OGRID Number
 328741

10. Pool name or Wildcat
 Stubblefield Canyon/Raton Vermejo Gas

SUNDRY NOTICES AND REPORTS ON WELLS

(DO NOT USE THIS FORM FOR PROPOSALS TO DRILL OR TO DEEPEN OR PLUG BACK TO A DIFFERENT RESERVOIR. USE "APPLICATION FOR PERMIT" (FORM C-101) FOR SUCH PROPOSALS.)

1. Type of Well: Oil Well ☐ Gas Well ☒ Other

2. Name of Operator
 Wapiti Operating, LLC

3. Address of Operator
 P.O. Box 190, 309 Silver St., Raton, NM 87740

4. Well Location

Unit Letter: O, 332 feet from the South line and 2549 feet from the East line

Section: 30 Township: 31N Range: 21E NMPM County: Colfax

11. Elevation (Show whether DR, RKB, RT, GR, etc.)
 7966 (GL)

12. Check Appropriate Box to Indicate Nature of Notice, Report or Other Data

NOTICE OF INTENTION TO:

PERFORM REMEDIAL WORK ☐ PLUG AND ABANDON ☒
 TEMPORARILY ABANDON ☐ CHANGE PLANS ☐
 PULL OR ALTER CASING ☐ MULTIPLE COMPL ☐
 DOWNHOLE COMMINGLE ☐
 CLOSED-LOOP SYSTEM ☐
 OTHER: ☐

SUBSEQUENT REPORT OF:

REMEDIAL WORK ☐ ALTERING CASING ☐
 COMMENCE DRILLING OPNS. ☐ P AND A ☒
 CASING/CEMENT JOB ☐
 OTHER: ☐

13. Describe proposed or completed operations. (Clearly state all pertinent details, and give pertinent dates, including estimated date of starting any proposed work). SEE RULE 19.15.7.14 NMAC. For Multiple Completions: Attach wellbore diagram of proposed completion or recompletion.

Please Find attached the plugging procedure and well bore diagram. We will plan to do this work in Spring of 2022.

Spud Date:

Rig Release Date:

I hereby certify that the information above is true and complete to the best of my knowledge and belief.

SIGNATURE Randy L. Madison TITLE HSE & Regulatory Specialist, Sr. DATE 10/18/2021

Type or print name Randy L. Madison E-mail address: rmadison@wapitienergy.com PHONE: 575-445-6706

For State Use Only

APPROVED BY: _____ TITLE _____ DATE _____
 Conditions of Approval (if any): _____

Wapiti Operating, LLC

VPR A-500 Plugging

API # 30-007-20892

Pre job Preparation: Check well for flow.

Injection Perforations and liner top:

MIRU

Nipple down wellhead, Nipple up BOP and test.

Pick up and sting out of polish bore, lay down 4.5" tubing, and seal assembly

Run 4.9" gauge ring

RIH with CIBP and set at 6300'

Dump bail 2 sx cement on plug

RIH with CIBP and set at 5950'

Dump bail 2 sx of cement on plug

RIH with CIBP and set at 5440'

Dump bail 2 sx of cement on plug

RIH with 2 7/8" work string to 5449'

Set balance plug from 5449' to 5364' with 25 sacks of class G neat cement, displace with 32 BBLS

POOH with work string

Intermediate Casing shoe:

RIH with perf guns, Perforate 7" casing from 3224' to 3225'. 4 shot per foot.

Test perf for injectivity / circulation

RIH with work string to 3224'

Set balance plug with 50 sacks of class G neat Displace with 12 BBLS

POOH with work string 500' reverse clean out tubing volume.

Displace plug into 7" – 9 5/8" annulus 3 BBLS of water

Wait on cement

Tag cement top 3224' or higher

POOH with work string

Surface casing shoe and Top plug:

RIH with split shot and split 7" casing collar around 370" +/-

RIH with perf gun and perforate at 369' to 371' with 4 SPF

Establish circulation to surface

RIH with tubing to 435' and pump 90 sx balance plug, displace with 1.6 BBLS

POOH with tubing

Wait on cement tag cement top 350' or higher

1 joint and 2 – 10' subs, 50 +/- set balance plug at 50' to surface.

Surface:

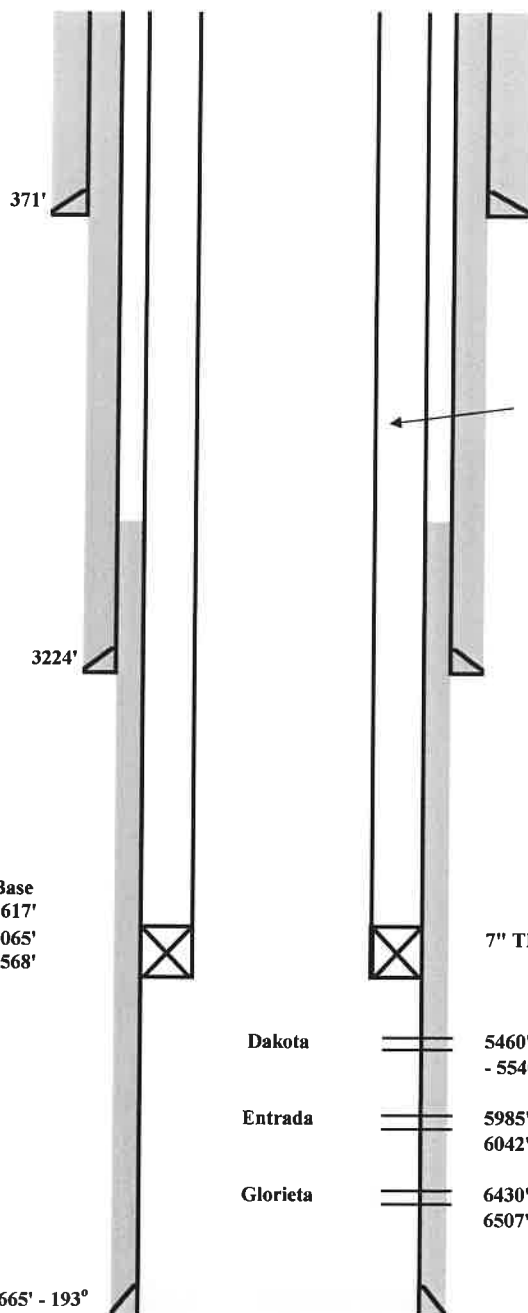
Cut off all casing strings off 4' below ground level

Install permanent marker as directed by NMOGCC

Reclaim location to Vermejo Park MEA specification.

CURRENT WELLBORE DIAGRAM

LEASE: <u>Vermejo Park Ranch</u>	WELL: <u>A-500</u>	FIELD: <u>Crow Canyon</u>	API NO: <u>30-007-20892</u>
LOC: <u>338' FSL & 2578' FEL</u>	SEC: <u>31</u>	T / R: <u>31N / 21E</u>	SPUD: <u>1/16/2008</u>
BHL: _____	GL: <u>7966'</u>	CTY/ST: <u>Colfax, NM</u>	COMPL: _____
CURRENT STATUS: <u>On Injection</u>	KB: <u>7978'</u>	DF: <u>7977'</u>	PBTD: _____
			TD: <u>6750'</u>



HOLE SIZE:	17-1/2"
CSG & SIZE:	13-3/8" 48# H-40
SET @:	371' w/ 94 bbls
CIRC:	Yes
TOC AT:	Surface by circ

4-1/2" 11.6 ppg L-80 IPC tubing w/ 4" seal assembly on EOT
Set down weight 22000 lbs

HOLE SIZE:	12-1/4"
CSG & SIZE:	9-5/8" 40# J-55
SET @:	3224' w/ 980 sks
CIRC:	No
TOC AT:	??

Formation Data

	Top	Base
Dakota	5452'	5617'
Entrada	5982'	6065'
Glorieta	6427'	6568'

7" THS 15 Liner Hanger Packer Full Bore 3.9"
Hydraulic Set Packer - set @ 5430'

Dakota	5460' - 5480' (new), 5480' - 90', 5490' - 5520' (new), 5520' - 28', 5530' - 5540', 5540' - 5580' (new), 5580' - 90', 5590' - 5607' (592 holes)
Entrada	5985' - 5995' (new), 5998' - 6008', 6010' - 6040' (new), 6020' - 30', 6042' - 52', 6050' - 6060' (new) (320 holes)
Glorieta	6430' - 6460', 6460' - 70', 6470' - 6500' (new), 6495' - 6505', 6507' - 15', 6515' - 6550' (new), 6550' - 60' (552 holes)

BHT @ 6665' - 193°

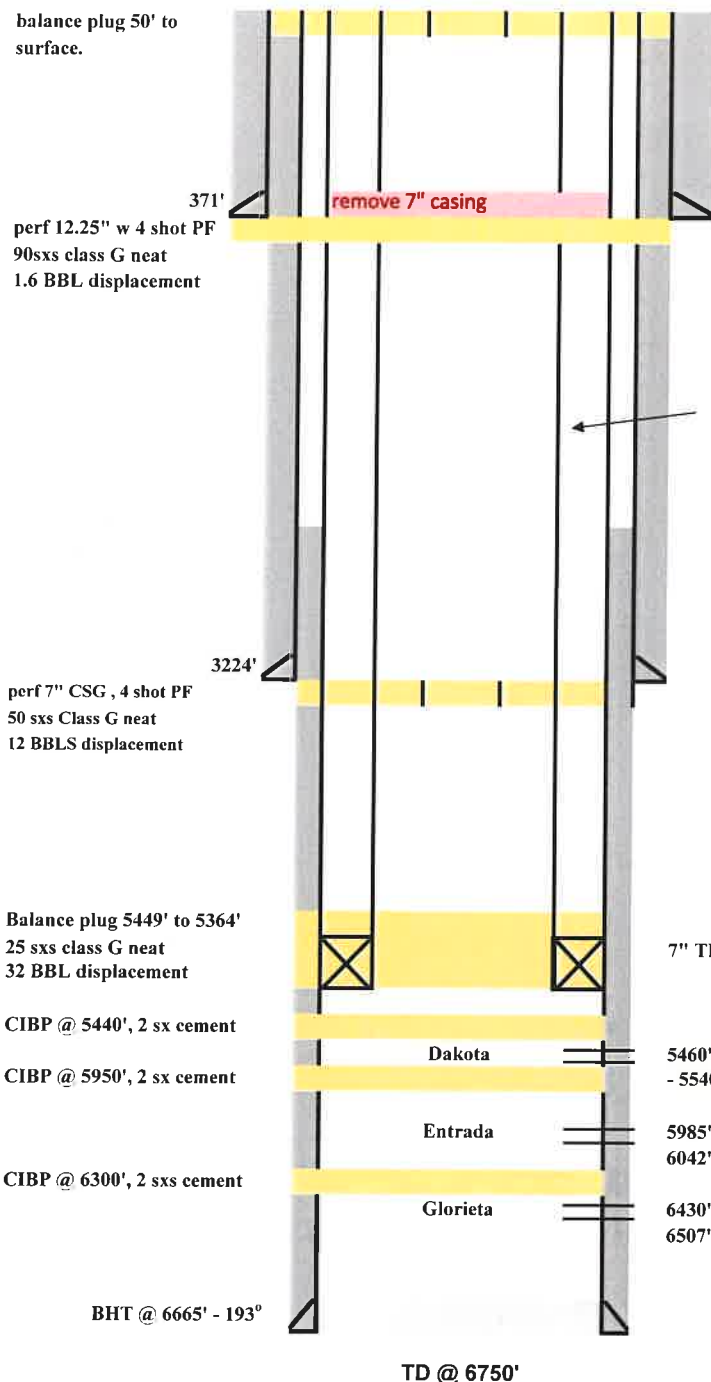
TD @ 6750'

HOLE SIZE:	8-3/4"
CSG & SIZE:	7" 26# P-110
SET @:	6633' w/ 129 bbls
CIRC:	No
TOC AT:	3800'?? by CBL

PROPOSED P & A WELLBORE DIAGRAM

LEASE: <u>Vermejo Park Ranch</u>	WELL: <u>A-500</u>	FIELD: <u>Crow Canyon</u>	API NO: <u>30-007-20892</u>
LOC: <u>338' FSL & 2578' FEL</u>	SEC: <u>31</u>	T / R: <u>31N / 21E</u>	SPUD: <u>1/16/2008</u>
BHL: _____	GL: <u>7966'</u>	CTV/ST: <u>Colfax, NM</u>	COMPL: _____
CURRENT STATUS: <u>On Injection</u>	KB: <u>7978'</u>	DF: <u>7977'</u>	PBTD: _____
			TD: <u>6750'</u>

balance plug 50' to surface.



HOLE SIZE:	17-1/2"
CSG & SIZE:	13-3/8" 48# H-40
SET @:	371' w/ 94 bbls
CIRC:	Yes
TOC AT:	Surface by circ

4-1/2" 11.6 ppg L-80 IPC tubing w/ 4" seal assembly on EOT
Set down weight 22000 lbs

HOLE SIZE:	12-1/4"
CSG & SIZE:	9-5/8" 40# J-55
SET @:	3224' w/ 980 sks
CIRC:	No
TOC AT:	??

Formation Data

	Top	Base
Dakota	5452'	5617'
Entrada	5982'	6065'
Glorieta	6427'	6568'

7" THS 15 Liner Hanger Packer Full Bore 3.9"
Hydraulic Set Packer - set @ 5430'

CIBP @ 5440', 2 sx cement

CIBP @ 5950', 2 sx cement

CIBP @ 6300', 2 sxs cement

Dakota

Entrada

Glorieta

5460' - 5480' (new), 5480' - 90', 5490' - 5520' (new), 5520' - 28', 5530' - 5540', 5540' - 5580' (new), 5580' - 90', 5590' - 5607' (592 holes)

5985' - 5995' (new), 5998' - 6008', 6010' - 6040' (new), 6020' - 30', 6042' - 52', 6050' - 6060' (new) (320 holes)

6430' - 6460', 6460' - 70', 6470' - 6500' (new), 6495' - 6505', 6507' - 15', 6515' - 6550' (new), 6550' - 60' (552 holes)

HOLE SIZE:	8-3/4"
CSG & SIZE:	7" 26# P-110
SET @:	6633' w/ 129 bbls
CIRC:	No
TOC AT:	3800'?? by CBL

District I
1625 N. French Dr., Hobbs, NM 88240
Phone:(575) 393-6161 Fax:(575) 393-0720
District II
811 S. First St., Artesia, NM 88210
Phone:(575) 748-1283 Fax:(575) 748-9720
District III
1000 Rio Brazos Rd., Aztec, NM 87410
Phone:(505) 334-6178 Fax:(505) 334-6170
District IV
1220 S. St Francis Dr., Santa Fe, NM 87505
Phone:(505) 476-3470 Fax:(505) 476-3462

State of New Mexico
Energy, Minerals and Natural Resources
Oil Conservation Division
1220 S. St Francis Dr.
Santa Fe, NM 87505

COMMENTS

Action 58132

COMMENTS

Operator: Wapiti Operating, LLC 1310 W Sam Houston PKWY N Houston, TX 77043	OGRID: 328741
	Action Number: 58132
	Action Type: [C-103] NOI Plug & Abandon (C-103F)

COMMENTS

Created By	Comment	Comment Date
kpickford	KP GEO Review 11/12/2021	11/12/2021

District I

1625 N. French Dr., Hobbs, NM 88240
 Phone:(575) 393-6161 Fax:(575) 393-0720

District II

811 S. First St., Artesia, NM 88210
 Phone:(575) 748-1283 Fax:(575) 748-9720

District III

1000 Rio Brazos Rd., Aztec, NM 87410
 Phone:(505) 334-6178 Fax:(505) 334-6170

District IV

1220 S. St Francis Dr., Santa Fe, NM 87505
 Phone:(505) 476-3470 Fax:(505) 476-3462

State of New Mexico
Energy, Minerals and Natural Resources
Oil Conservation Division
1220 S. St Francis Dr.
Santa Fe, NM 87505

CONDITIONS

Action 58132

CONDITIONS

Operator: Wapiti Operating, LLC 1310 W Sam Houston PKWY N Houston, TX 77043	OGRID: 328741
	Action Number: 58132
	Action Type: [C-103] NOI Plug & Abandon (C-103F)

CONDITIONS

Created By	Condition	Condition Date
kpickford	Notify NMOCD 24 Hours Prior to beginning operations	11/12/2021
kpickford	Ensure coverage from 6380-6330 (50' above the Glorieta perforations).	11/12/2021
kpickford	Ensure coverage from 5935-5885 (50' above the Entrada perforations).	11/12/2021
kpickford	Ensure coverage from 5410-5360 (50' above the Dakota perforations).	11/12/2021
kpickford	Ensure coverage of casing shoe 3274-3174	11/12/2021
kpickford	Ensure coverage of surface casing shoe 421-321	11/12/2021