

<b>Well Name:</b> CBM 33-29-14	<b>Well Location:</b> T29N / R14W / SEC 33 / SESW / 36.67858 / -108.31586	<b>County or Parish/State:</b> SAN JUAN / NM
<b>Well Number:</b> 14	<b>Type of Well:</b> CONVENTIONAL GAS WELL	<b>Allottee or Tribe Name:</b> EASTERN NAVAJO
<b>Lease Number:</b> NOG10081773	<b>Unit or CA Name:</b>	<b>Unit or CA Number:</b>
<b>US Well Number:</b> 300453529600X1	<b>Well Status:</b> Gas Well Shut In	<b>Operator:</b> NAVAJO NATION OIL & GAS COMPANY

**Notice of Intent**

**Sundry ID:** 2156918  
**Type of Submission:** Notice of Intent  
**Date Sundry Submitted:** 04/14/2021  
**Date proposed operation will begin:** 04/23/2021  
**Type of Action:** Plug and Abandonment  
**Time Sundry Submitted:** 01:34  
**Procedure Description:** P&A procedure attached no rec plan as has been approved by BIA & BLM

**Surface Disturbance**

**Is any additional surface disturbance proposed?:** No

**NOI Attachments**

**Procedure Description**  
CBM\_33\_29\_14\_14\_20210414133428.pdf

<b>Well Name:</b> CBM 33-29-14	<b>Well Location:</b> T29N / R14W / SEC 33 / SESW / 36.67858 / -108.31586	<b>County or Parish/State:</b> SAN JUAN / NM
<b>Well Number:</b> 14	<b>Type of Well:</b> CONVENTIONAL GAS WELL	<b>Allottee or Tribe Name:</b> EASTERN NAVAJO
<b>Lease Number:</b> NOG10081773	<b>Unit or CA Name:</b>	<b>Unit or CA Number:</b>
<b>US Well Number:</b> 300453529600X1	<b>Well Status:</b> Gas Well Shut In	<b>Operator:</b> NAVAJO NATION OIL & GAS COMPANY

Conditions of Approval

Additional Reviews

29N14W33NKd\_CBM\_33\_29\_14\_14\_20210930101459.pdf

Authorized Officer

2156918\_NOIA\_CBM\_33\_29\_14\_14\_3004535296\_KR\_09302021\_20210930142153.pdf

General\_Requirement\_PxA\_20210930142131.pdf

Operator Certification

*I certify that the foregoing is true and correct. Title 18 U.S.C. Section 1001 and Title 43 U.S.C. Section 1212, make it a crime for any person knowingly and willfully to make to any department or agency of the United States any false, fictitious or fraudulent statements or representations as to any matter within its jurisdiction. Electronic submission of Sundry Notices through this system satisfies regulations requiring a submission of Form 3160-5 or a Sundry Notice.*

**Operator Electronic Signature:** VANESSA FIELDS

**Signed on:** APR 14, 2021 01:30 PM

**Name:** NAVAJO NATION OIL & GAS COMPANY

**Title:** Regulatory Manager

**Street Address:** 7415 EAST MAIN STREET

**City:** FARMINGTON **State:** NM

**Phone:** (505) 327-4892

**Email address:** VANESSA@WALSHENG.NET

Field Representative

**Representative Name:** VANESSA FIELDS

**Street Address:** 7415 EAST MAIN STREET

**City:** FARMINGTON **State:** NM

**Zip:** 87402

**Phone:** (150)578-7910

**Email address:** vanessa@walsheng.net

BLM Point of Contact

**BLM POC Name:** KENNETH G RENNICK

**BLM POC Title:** Petroleum Engineer

## P&A Procedure

### Navajo Nation Oil & Gas Company – CBM 33-29-14 #14

Basin Dakota

1109' FNL & 2505' FWL, Section 33, T29N, R14W

San Juan County, New Mexico, API #30-045-35296

#### Plug & Abandonment Procedure:

**Note:** All cement volumes use 100% excess outside casing and 50' excess inside pipe. Stabilizing wellbore fluid will be 8.33 ppg, sufficient to balance all exposed formation pressures. All cement will be ASTM Class G neat 1.15 ft<sup>3</sup>/sk or equivalent. Cement calculation based on 5.5" 15.5# casing. Cement was circulated to surface during primary cement jobs on both the surface and production strings. This well was never completed.

#### Prior to Mobilization

1. Notify BLM & NN Minerals Dept
2. Verify all cement volumes based on actual slurry to be pumped. Calculations based on 1.15 ft<sup>3</sup>/sk.
3. Comply with all COA's from BLM & NN Minerals Dept

#### P&A Procedure

1. MIRU Service rig and cement equipment
2. ND WH, NU BOP, RU rig floor and 2 3/8" handling tools
3. Pressure test casing to 500 psi (note this well was never completed).
4. PU 2-3/8" workstring & TIH to 5698'. Load hole and circulate clean if necessary.
5. **Plug #1, 5548' – 5698' (Dakota Top at 5648', NO Perfs):** Mix & pump 14 sx (16.1 ft<sup>3</sup>) of Class G neat cement (or equivalent) in a balanced plug. PU to 5198' and reverse circulate to clean tubing.
6. **Plug #2, 5048' - 5198' (Gallup Top at 5148'):** Mix & pump 14 sx (16.1 ft<sup>3</sup>) of Class G neat cement (or equivalent) in a balanced plug. PU to 3598' and reverse circulate to clean tubing.
7. **Plug #3, 3448' – 3598' (Mancos Top at 3548').** Mix & pump 14 sx (16.1 ft<sup>3</sup>) of Class G neat cement (or equivalent) in a balanced plug. PU to 1948' and reverse circulate to clean tubing.
8. **Plug #4, 1798' – 1948' (Mesaverde Top at 1898').** Mix & pump 14 sx (16.1 ft<sup>3</sup>) of Class G neat cement (or equivalent) in a balanced plug. PU to 1113' and reverse circulate to clean tubing.
9. **Plug #5, 963' – 1113' (Pictured Cliffs Top at 1063').** Mix & pump 14 sx (16.1 ft<sup>3</sup>) of Class G neat cement (or equivalent) in a balanced plug. PU to 898' and reverse circulate to clean tubing.
10. **Plug #6, 748' – 898' (Fruitland Top at 848').** Mix & pump 14 sx (16.1 ft<sup>3</sup>) of Class G neat cement (or equivalent) in a balanced plug. PU to 50' and reverse circulate to clean tubing.
11. **Plug #7, Surface – 50'. (Surface casing at 362')** Note: Circulated 28 bbls of cement to surface on primary surface casing cement job. Mix and pump ~5 sx (6 ft<sup>3</sup>) to fill inside of casing. Lay down remaining tubing & Top off as necessary.

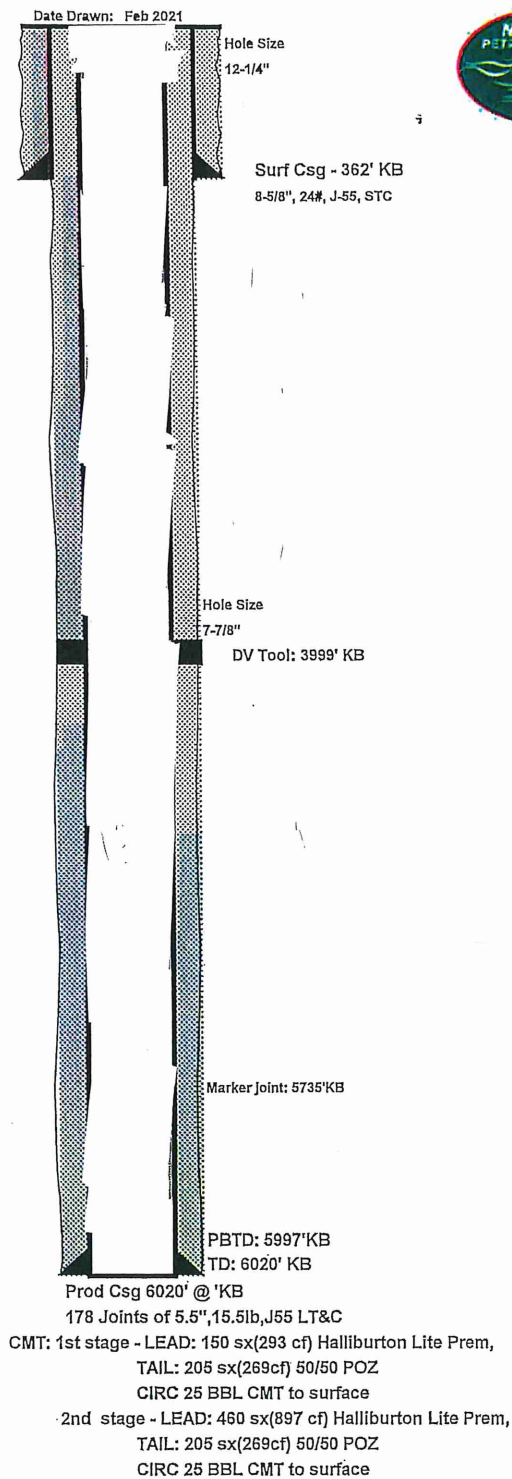
12. ND BOP and cut off wellhead below surface casing flange, top off casing and annulus as necessary. Install P&A marker and cut off and/or remove anchors. RD, MOL - Restore location as directed.

---

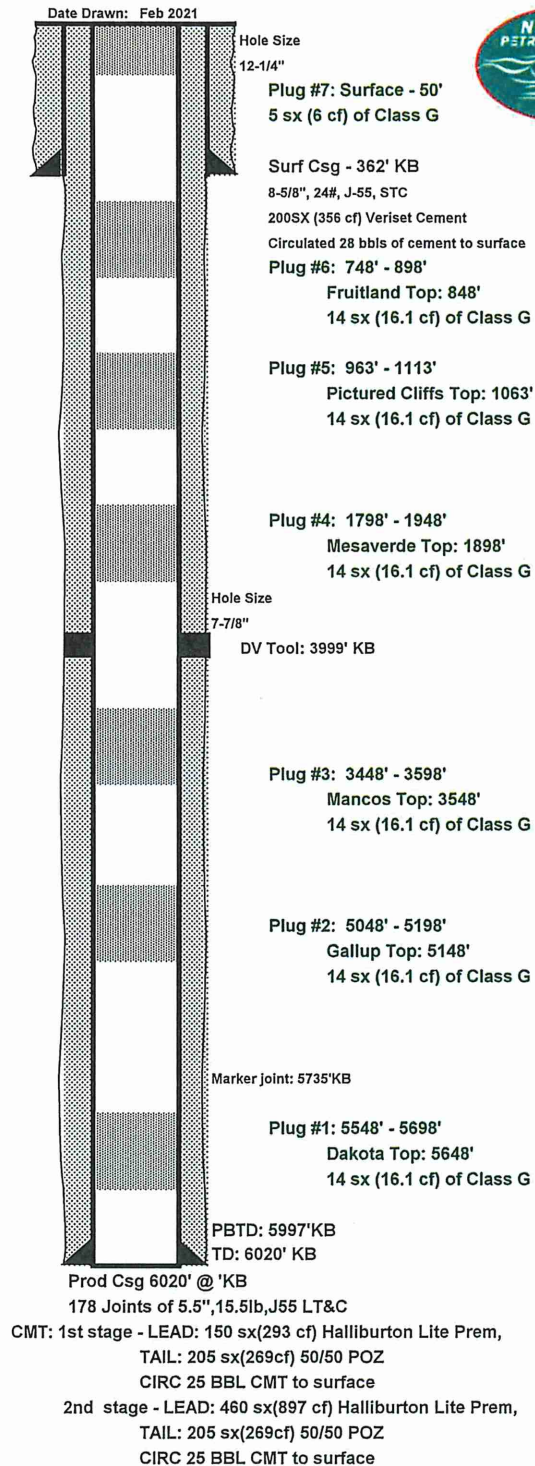
John Thompson  
Engineer



Well/Facility:	CBM 33-29-14 #14	Well Status:	DUC
Operator:	NNOGC	Orig Oper:	NNOGC
Lease/Op Agmt:		Prod Interval:	
Field:	Basin Dakota	API #:	30-045-35296
County:	San Juan	GL/KB:	5648' GL
State:	NM	TD:	6020'
Spud:	12/2/2011	PBTD:	5997'
Comp. Date:		LAT:	36.67858
1st Prod:		LONG:	108.31586
Xmas tree:			
Surface Loc:	1109' FNL, 2505' FWL		
Sec-Twn-Rge:	Section 33, T29N, R14W		
Comments:			

[illegible]

Well/Facility:	CBM 33-29-14 #14	Well Status:	DUC
Operator:	NNOGC	Orig Oper:	NNOGC
Lease/Op Agmt:		Prod Interval:	
Field:	Basin Dakota	API #:	30-045-35296
County:	San Juan	GL/KB:	5648' GL
State:	NM	TD:	6020'
Spud:	12/2/2011	PBTD:	5997'
Comp. Date:		LAT:	36.67858
1st Prod:		LONG:	108.31586
Xmas tree:			
Surface Loc:	1109' FNL, 2505' FWL		
Sec-Twn-Rge:	Section 33, T29N, R14W		
Comments:			

[illegible]

UNITED STATES DEPARTMENT OF THE INTERIOR  
BUREAU OF LAND MANAGEMENT  
FARMINGTON DISTRICT OFFICE  
6251 COLLEGE BLVD.  
FARMINGTON, NEW MEXICO 87402

Attachment to notice of  
Intention to Abandon:

Re: Permanent Abandonment  
Well: CBM 33 29 14 14

CONDITIONS OF APPROVAL

1. Plugging operations authorized are subject to the attached "General Requirements for Permanent Abandonment of Wells on Federal and Indian Lease."
2. Farmington Office is to be notified at least 24 hours before the plugging operations commence (505) 564-7750.
3. The following modifications to your plugging program are to be made:
  1. Plug 2 should be adjusted, or an additional plug added, to cover the BLM top for the Gallup formation at 4810 feet.
  2. Plug 3 should be adjusted, or an additional plug added, to cover the BLM top for the Mancos formation at 3828 feet.
  3. Plug 4 should be adjusted, or an additional plug added, to cover the BLM top for the Mancos formation at 1944 feet.
  4. Plug 5 should be adjusted, or an additional plug added, to cover the BLM top for the Mancos formation at 966 feet.
  5. Plug 6 should be adjusted, or an additional plug added, to cover the BLM top for the Mancos formation at 675 feet.
  6. Include a plug to cover 50 feet below or above the surface casing shoe at 362 feet. Or adjust Plug 7.

You are also required to place cement excesses per 4.2 and 4.4 of the attached General Requirements.

Office Hours: 7:45 a.m. to 4:30 p.m.

K. Rennick 9/30/2021



**GENERAL REQUIREMENTS FOR  
PERMANENT ABANDONMENT OF WELLS ON FEDERAL AND INDIAN LEASES  
FARMINGTON FIELD OFFICE**

1.0 The approved plugging plans may contain variances from the following minimum general requirements.

1.1 Modification of the approved plugging procedure is allowed only with the prior approval of the Authorized Officer, Farmington Field Office.

1.2 Requirements may be added to address specific well conditions.

2.0 Materials used must be accurately measured. (densometer/scales)

3.0 A tank or lined pit must be used for containment of any fluids from the wellbore during plugging operations and all pits are to be fenced with woven wire. These pits will be fenced on three sides and once the rig leaves location, the fourth side will be fenced.

3.1 Pits are not to be used for disposal of any hydrocarbons. If hydrocarbons are present in the pit, the fluids must be removed prior to filling in.

4.0 All cement plugs are to be placed through a work string. Cement may be bull-headed down the casing with prior approval. Cement caps on top of bridge plugs or cement retainers may be placed by dump bailer.

4.1 The cement shall be as specified in the approved plugging plan.

4.2 All cement plugs placed inside casing shall have sufficient volume to fill a minimum of 100' of the casing, or annular void(s) between casings, plus an excess volume sufficient to provide for 50 linear feet of fill above the plug.

4.3 Surface plugs may be no less than 50' in length.

4.4 All cement plugs placed to fill annular void(s) between casing and the formation shall be of sufficient volume to fill a minimum of 100' of the annular space plus 100% excess, calculated using the bit size, or 100' of annular capacity, determined from a caliper log, plus an excess volume sufficient to provide for 50 linear feet of fill above the plug.

4.5 All cement plugs placed to fill an open hole shall be of sufficient volume to fill a minimum of 100' of hole, as calculated from a caliper log, plus an excess volume sufficient to provide for 50 linear feet of fill above the plug. In the absence of a caliper log, an excess of 100% shall be required.

**4.6 A cement bond log or other accepted cement evaluation tool is required to be run if one had not been previously ran or cement did not circulate to surface during the original casing cementing job or subsequent cementing jobs.**



5.0 All cement plugs spotted across, or above, any exposed zone(s), when; the wellbore is not full of fluid or the fluid level will not remain static, and in the case of lost circulation or partial returns during cement placement, shall be tested by tagging with the work string.

- 5.1 The top of any cement plug verified by tagging must be at or above the depth specified in the approved plan, without regard to any excess.
- 5.2 Testing will not be required for any cement plug that is mechanically contained by use of a bridge plug and/or cement retainer, if casing integrity has been established.
- 5.3 Any cement plug which is the only isolating medium, for a fresh water interval or a zone containing a prospectively valuable deposit of minerals, shall be tested by tagging.
- 5.4 If perforations are required below the surface casing shoe, a 30 minute minimum wait time will be required to determine if gas and/or water flows are present. If flow is present, the well will be shut-in for a minimum of one hour and the pressure recorded. Short or long term venting may be necessary to evacuate trapped gas. **If only a water flow occurs with no associated gas, shut well in and record the pressures. Contact the Engineer as it may be necessary to change the cement weight and additives.**

6.0 Before setting any cement plugs the hole needs to be rolled. All wells are to be controlled by means of a fluid that is to be of a weight and consistency necessary to stabilize the wellbore. This fluid shall be left in place as filler between all plugs.

- 6.1 Drilling mud may be used as the wellbore fluid in open hole plugging operations.
- 6.2 The wellbore fluid used in cased holes shall be of sufficient weight to balance known pore pressures in all exposed formations.

7.0 A blowout preventer and related equipment (BOPE) shall be installed and tested prior to working in a wellbore with any exposed zone(s); (1) that are over pressured, (2) where the pressures are unknown, or (3) known to contain H<sub>2</sub>S.

8.0 Within 30 days after plugging work is completed, file a Sundry Notice, Subsequent Report of Abandonment (Form 3160-5), five copies, with the Field Manager, Bureau of Land Management, 6251 College Blvd., Suite A, Farmington, NM 87402. The report should show the manner in which the plugging work was carried out, the extent, by depth(s), of cement plugs placed, and the size and location, by depth(s), of casing left in the well. Show date well was plugged.

9.0 All permanently abandoned wells are to be marked with a permanent monument as specified in 43 CFR 3162.6(d). Unless otherwise approved.

10.0 If this well is located in a Specially Designated Area (SDA), compliance with the appropriate seasonal closure requirements will be necessary.

All of the above are minimum requirements. Failure to comply with the above conditions of approval may result in an assessment for noncompliance and/or a Shut-in Order being issued pursuant to 43 CFR 3163.1. You are further advised that any instructions, orders or decisions issued by the Bureau of Land Management are subject to administrative review pursuant to 43 CFR 3165.3 and appeal pursuant to 43 CFR 3165.4 and 43 CFR 4.700.

(October 2012 Revision)

# BLM FLUID MINERALS Geologic Report

Date Completed: 6/10/2021

Well No. CBM 33-29-14 #14 (API# 30-045-35296)	Location	1109	FSL	&	2505	FWL
Lease No. NO-G-1008-1773	Sec. 33	T29N			R14W	
Operator NNOGC Exploration & Production, LLC	County	San Juan		State	New Mexico	
Total Depth 6020'	PBTD 5997'	Formation Dakota (PBTD)				
Elevation (GL) 5648'	Elevation (KB)					

Geologic Formations	Est. Top	Est. Bottom	Log Top	Log Bottom	Remarks
San Jose Fm					Surface/Fresh water sands
Nacimiento Fm					Fresh water sands
Ojo Alamo Ss					Aquifer (fresh water)
Kirtland Shale	Surf	675			Possible usable water near surface
Fruitland Fm	675	996			Coal/Gas/Possible water
Pictured Cliffs Ss	996	1197			Gas
Lewis Shale	1197	1568			
Chacra	1568	1944			
Cliff House (La Ventana) Ss	1944	2645			Water/Possible gas
Menefee Fm	2645	3522			Coal/Ss/Water/Possible O&G
Point Lookout Ss	3522	3828			Probable water/Possible O&G
Mancos Shale	3828	4810			
Gallup	4810	5706			O&G/probable water
Sanostee					
Graneros Shale	5706	5759			
Dakota Ss	5759	PBTD			Gas/potential oil/water
Morrison					Water/possible gas

## Remarks:

P & A

- No well log available for the subject well, tops were estimated based on well logs for Reference Well #1. BLM formation top estimates vary from tops submitted by Operator. A Chacra plug is not required. This well was not completed.
- Plug #2 (Gallup) top should be brought up, or an additional plug added, to cover BLM Gallup formation top estimate @ 4810'.
- Plug #3 (Mancos) should be adjusted, or an additional plug added, to cover BLM Mancos formation top estimate @ 3828'.
- Plug #4 (Mesaverde) bottom should be brought down to adequately cover below BLM Cliff House formation top estimate @ 1944'.
- Plug #5 (Pictured Cliffs) top should be brought up to adequately cover above BLM Pictured Cliffs formation top estimate @ 996'.
- Plug #6 (Fruitland) top should be brought up to adequately cover above BLM Fruitland formation top estimate @ 675'.
- Recommend Plug #7 (Surface) be lengthened to cover below surface casing shoe @ 362'.

## Reference Well:

### 1) Formation Tops

(Surf - Gallup)  
Humble Oil  
CCU #34-41  
560' FNL, 560' FEL  
Sec. 34, T29N, R14W  
GL 5781' KB 5792'

### 2) Formation Tops

(Graneros – Morrison)  
Nav Amarillo #1  
735' FSL, 660' FWL  
Sec. 31, T29N, R14W  
GL 5552' KB 5563'

Prepared by: Chris Wenman

**District I**  
1625 N. French Dr., Hobbs, NM 88240  
Phone:(575) 393-6161 Fax:(575) 393-0720  
**District II**  
811 S. First St., Artesia, NM 88210  
Phone:(575) 748-1283 Fax:(575) 748-9720  
**District III**  
1000 Rio Brazos Rd., Aztec, NM 87410  
Phone:(505) 334-6178 Fax:(505) 334-6170  
**District IV**  
1220 S. St Francis Dr., Santa Fe, NM 87505  
Phone:(505) 476-3470 Fax:(505) 476-3462

**State of New Mexico**  
**Energy, Minerals and Natural Resources**  
**Oil Conservation Division**  
**1220 S. St Francis Dr.**  
**Santa Fe, NM 87505**

COMMENTS  
  
Action 61490

COMMENTS

Operator: NNOGC EXPLORATION AND PRODUCTION, LLC 1625 Broadway Denver, CO 80202	OGRID: 292875
	Action Number: 61490
	Action Type: [C-103] NOI Plug & Abandon (C-103F)

COMMENTS

Created By	Comment	Comment Date
kpickford	KP GEO Review 11/12/2021	11/12/2021

**District I**

1625 N. French Dr., Hobbs, NM 88240  
Phone:(575) 393-6161 Fax:(575) 393-0720

**District II**

811 S. First St., Artesia, NM 88210  
Phone:(575) 748-1283 Fax:(575) 748-9720

**District III**

1000 Rio Brazos Rd., Aztec, NM 87410  
Phone:(505) 334-6178 Fax:(505) 334-6170

**District IV**

1220 S. St Francis Dr., Santa Fe, NM 87505  
Phone:(505) 476-3470 Fax:(505) 476-3462

**State of New Mexico**  
**Energy, Minerals and Natural Resources**  
**Oil Conservation Division**  
**1220 S. St Francis Dr.**  
**Santa Fe, NM 87505**

CONDITIONS

Action 61490

**CONDITIONS**

Operator: NNOGC EXPLORATION AND PRODUCTION, LLC 1625 Broadway Denver, CO 80202	OGRID: 292875
	Action Number: 61490
	Action Type: [C-103] NOI Plug & Abandon (C-103F)

**CONDITIONS**

Created By	Condition	Condition Date
kpickford	Notify NMOCD 24 Hours Prior to beginning operations	11/12/2021
kpickford	Adhere to BLM COAs for plugs.	11/12/2021