

Well Name: CLINCHER FED COM	Well Location: T25S / R35E / SEC 1 / LOT 4 /	County or Parish/State:
Well Number: 702H	Type of Well: OIL WELL	Allottee or Tribe Name:
Lease Number: NMNM138897	Unit or CA Name:	Unit or CA Number:
US Well Number: 3002548810	Well Status: Approved Application for Permit to Drill	Operator: FRANKLIN MOUNTAIN ENERGY LLC

Subsequent Report

Sundry ID: 2509336

Type of Submission: Subsequent Report

Date Sundry Submitted: 07/22/2021

Date Operation Actually Began: 07/01/2021

Type of Action: Other

Time Sundry Submitted: 05:13

Actual Procedure: Franklin Mountain Energy, LLC (FME), Operator of the above captioned well, respectfully submits the attached, updated, C-102 for BLM record.

SR Attachments

Actual Procedure

C_102_CLINCHER_FED_COM_702H_20210722171313.pdf

Well Name: CLINCHER FED COM	Well Location: T25S / R35E / SEC 1 / LOT 4 /	County or Parish/State:
Well Number: 702H	Type of Well: OIL WELL	Allottee or Tribe Name:
Lease Number: NMNM138897	Unit or CA Name:	Unit or CA Number:
US Well Number: 3002548810	Well Status: Approved Application for Permit to Drill	Operator: FRANKLIN MOUNTAIN ENERGY LLC

Operator Certification

I certify that the foregoing is true and correct. Title 18 U.S.C. Section 1001 and Title 43 U.S.C. Section 1212, make it a crime for any person knowingly and willfully to make to any department or agency of the United States any false, fictitious or fraudulent statements or representations as to any matter within its jurisdiction. Electronic submission of Sundry Notices through this system satisfies regulations requiring a submission of Form 3160-5 or a Sundry Notice.

Operator Electronic Signature: RACHAEL OVERBEY	Signed on: JUL 22, 2021 05:13 PM
Name: FRANKLIN MOUNTAIN ENERGY LLC	
Title: Director – Operations Planning and Regulatory	
Street Address: 2401 E 2nd Avenue, Suite 300	
City: Denver	State: CO
Phone: (720) 414-7868	
Email address: roverbey@fmellc.com	

Field Representative

Representative Name:		
Street Address:		
City:	State:	Zip:
Phone:		
Email address:		

BLM Point of Contact

BLM POC Name: CHRISTOPHER WALLS	BLM POC Title: Petroleum Engineer
BLM POC Phone: 5752342234	BLM POC Email Address: cwalls@blm.gov
Disposition: Approved	Disposition Date: 11/29/2021
Signature: Chris Walls	

District I
1625 N. French Dr., Hobbs, NM 88240
Phone: (575) 393-6161 Fax: (575) 393-0720
District II
811 S. First St., Artesia, NM 88210
Phone: (575) 748-1283 Fax: (575) 748-9720
District III
1000 Rio Brazos Road, Aztec, NM 87410
Phone: (505) 334-6178 Fax: (505) 334-6170
District IV
1220 S. St. Francis Dr., Santa Fe, NM 87505
Phone: (505) 476-3460 Fax: (505) 476-3462

State of New Mexico
Energy, Minerals & Natural Resources Department
OIL CONSERVATION DIVISION
1220 South St. Francis Dr.
Santa Fe, NM 87505

Form C-102
Revised August 1, 2011
Submit one copy to appropriate
District Office

☒ AMENDED REPORT

WELL LOCATION AND ACREAGE DEDICATION PLAT

¹ API Number 30-025-48810		² Pool Code 98187		³ Pool Name WC-025 G-09 S253502D; UPR WOLFCAMP	
⁴ Property Code 330789		⁵ Property Name CLINCHER FEDERAL			⁶ Well Number 702H
⁷ OGRID No. 373910		⁸ Operator Name FRANKLIN MOUNTAIN ENERGY LLC			⁹ Elevation 3273.8'

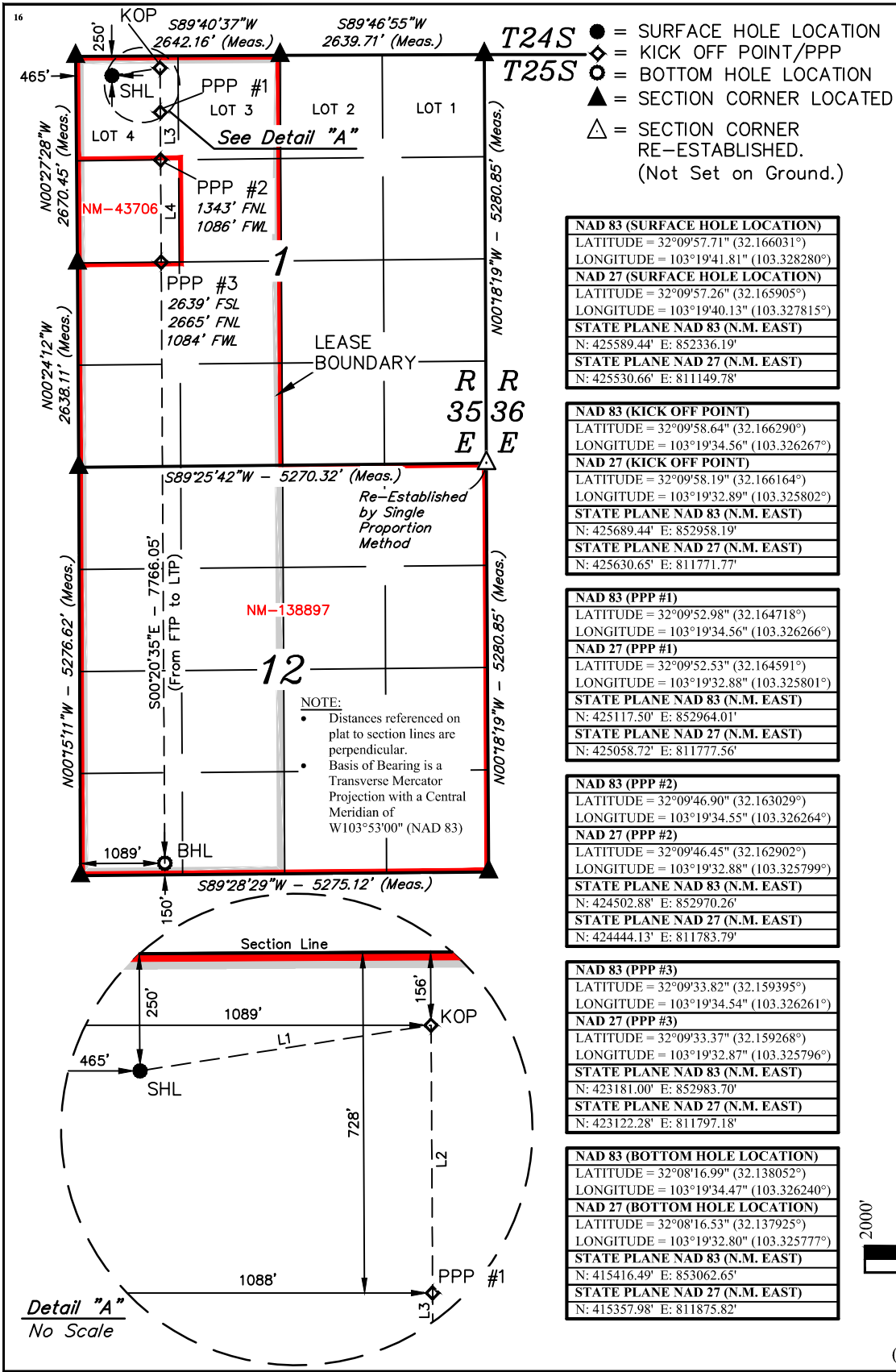
¹⁰ Surface Location

UL or lot no.	Section	Township	Range	Lot Idn	Feet from the	North/South line	Feet from the	East/West line	County
4	1	25S	35E		250	NORTH	465	WEST	LEA

¹¹ Bottom Hole Location If Different From Surface

UL or lot no.	Section	Township	Range	Lot Idn	Feet from the	North/South line	Feet from the	East/West line	County
M	12	25S	35E		150	SOUTH	1089	WEST	LEA
¹² Dedicated Acres 641.2		¹³ Joint or Infill		¹⁴ Consolidation Code		¹⁵ Order No.			

No allowable will be assigned to this completion until all interests have been consolidated or a non-standard unit has been approved by the division.



- = SURFACE HOLE LOCATION
◆ = KICK OFF POINT/PPP
○ = BOTTOM HOLE LOCATION
▲ = SECTION CORNER LOCATED
△ = SECTION CORNER RE-ESTABLISHED.
(Not Set on Ground.)

NAD 83 (SURFACE HOLE LOCATION)	
LATITUDE = 32°09'57.71" (32.166031°)	
LONGITUDE = 103°19'41.81" (103.328280°)	
NAD 27 (SURFACE HOLE LOCATION)	
LATITUDE = 32°09'57.26" (32.165905°)	
LONGITUDE = 103°19'40.13" (103.327815°)	
STATE PLANE NAD 83 (N.M. EAST)	
N: 425589.44' E: 852336.19'	
STATE PLANE NAD 27 (N.M. EAST)	
N: 425530.66' E: 811149.78'	

NAD 83 (KICK OFF POINT)	
LATITUDE = 32°09'58.64" (32.166290°)	
LONGITUDE = 103°19'34.56" (103.326267°)	
NAD 27 (KICK OFF POINT)	
LATITUDE = 32°09'58.19" (32.166164°)	
LONGITUDE = 103°19'32.89" (103.325802°)	
STATE PLANE NAD 83 (N.M. EAST)	
N: 425689.44' E: 852958.19'	
STATE PLANE NAD 27 (N.M. EAST)	
N: 425630.65' E: 811771.77'	

NAD 83 (PPP #1)	
LATITUDE = 32°09'52.98" (32.164718°)	
LONGITUDE = 103°19'34.56" (103.326266°)	
NAD 27 (PPP #1)	
LATITUDE = 32°09'52.53" (32.164591°)	
LONGITUDE = 103°19'32.88" (103.325801°)	
STATE PLANE NAD 83 (N.M. EAST)	
N: 425117.50' E: 852964.01'	
STATE PLANE NAD 27 (N.M. EAST)	
N: 425058.72' E: 811777.56'	

NAD 83 (PPP #2)	
LATITUDE = 32°09'46.90" (32.163029°)	
LONGITUDE = 103°19'34.55" (103.326264°)	
NAD 27 (PPP #2)	
LATITUDE = 32°09'46.45" (32.162902°)	
LONGITUDE = 103°19'32.88" (103.325799°)	
STATE PLANE NAD 83 (N.M. EAST)	
N: 424502.88' E: 852970.26'	
STATE PLANE NAD 27 (N.M. EAST)	
N: 424444.13' E: 811783.79'	

NAD 83 (PPP #3)	
LATITUDE = 32°09'33.82" (32.159395°)	
LONGITUDE = 103°19'34.54" (103.326261°)	
NAD 27 (PPP #3)	
LATITUDE = 32°09'33.37" (32.159268°)	
LONGITUDE = 103°19'32.87" (103.325796°)	
STATE PLANE NAD 83 (N.M. EAST)	
N: 423181.00' E: 852983.70'	
STATE PLANE NAD 27 (N.M. EAST)	
N: 423122.28' E: 811797.18'	

NAD 83 (BOTTOM HOLE LOCATION)	
LATITUDE = 32°08'16.99" (32.138052°)	
LONGITUDE = 103°19'34.47" (103.326240°)	
NAD 27 (BOTTOM HOLE LOCATION)	
LATITUDE = 32°08'16.53" (32.137925°)	
LONGITUDE = 103°19'32.80" (103.325777°)	
STATE PLANE NAD 83 (N.M. EAST)	
N: 415416.49' E: 853062.65'	
STATE PLANE NAD 27 (N.M. EAST)	
N: 415357.98' E: 811875.82'	

¹⁷ OPERATOR CERTIFICATION
I hereby certify that the information contained herein is true and complete to the best of my knowledge and belief, and that this organization either owns a working interest or unleased mineral interest in the land including the proposed bottom hole location or has a right to drill this well at this location pursuant to a contract with an owner of such a mineral or working interest, or to a voluntary pooling agreement or a compulsory pooling order heretofore entered by the division.

Signature: *Shelly Albrecht* Date: 7/22/2021

Printed Name: Shelly Albrecht

E-mail Address: salbrecht@fmellc.com

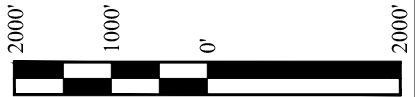
¹⁸ SURVEYOR CERTIFICATION
I hereby certify that the well location shown on this plat was plotted from field notes of actual surveys made by me or under my supervision, and that the same is true and correct to the best of my belief.

February 13, 2020
Date of Survey
Signature and Seal of Professional Surveyor:



Certificate Number:

LINE TABLE		
LINE	DIRECTION	LENGTH
L1	N81°06'21"E	630.08'
L2	S00°20'35"E	572.06'
L3	S00°20'35"E	614.73'
L4	S00°20'35"E	1322.14'



S C A L E
DRAWN BY: S.F. 02-24-20
REV: 2 A.T. 07-21-21
(UPDATE DEDICATED ACRES)

District I

1625 N. French Dr., Hobbs, NM 88240
Phone:(575) 393-6161 Fax:(575) 393-0720

District II

811 S. First St., Artesia, NM 88210
Phone:(575) 748-1283 Fax:(575) 748-9720

District III

1000 Rio Brazos Rd., Aztec, NM 87410
Phone:(505) 334-6178 Fax:(505) 334-6170

District IV

1220 S. St Francis Dr., Santa Fe, NM 87505
Phone:(505) 476-3470 Fax:(505) 476-3462

State of New Mexico
Energy, Minerals and Natural Resources
Oil Conservation Division
1220 S. St Francis Dr.
Santa Fe, NM 87505

CONDITIONS

Action 64933

CONDITIONS

Operator: Franklin Mountain Energy LLC 44 Cook Street Denver, CO 80206	OGRID: 373910
	Action Number: 64933
	Action Type: [C-103] NOI Change of Plans (C-103A)

CONDITIONS

Created By	Condition	Condition Date
pkautz	None	12/6/2021