

Well Name: MODELO 10 FED COM	Well Location: T24S / R32E / SEC 10 / SWSW / 32.2406066 / -103.6699513	County or Parish/State: LEA / NM
Well Number: 523H	Type of Well: OIL WELL	Allottee or Tribe Name:
Lease Number: NMNM94850	Unit or CA Name:	Unit or CA Number:
US Well Number: 300254723400X1	Well Status: Approved Application for Permit to Drill	Operator: EOG RESOURCES INCORPORATED

Notice of Intent

Sundry ID: 2644343

Type of Submission: Notice of Intent	Type of Action: Other
Date Sundry Submitted: 11/16/2021	Time Sundry Submitted: 01:23
Date proposed operation will begin: 11/30/2021	

**Procedure Description:** EOG respectfully requests an amendment to our approved APD for this well to reflect the following changes: Change name from Pegasus 3 Fed Com 208H to Modelo 10 Fed Com 523H. Change SHL to T-24-S, R-32-E, Sec 10, 200' FNL, 335' FEL, Lea Co., N.M. Change BHL to T-24-S, R-32-E, Sec 15, 2534' FNL, 1100' FEL, Lea Co., N.M. Change target formation to Second Bone Spring Sand. Update casing and cement program to current design. Update HSU to 1000 acres.

Surface Disturbance

Is any additional surface disturbance proposed?: No

NOI Attachments

Procedure Description

- Wellhead\_9.675\_in\_20211116132340.pdf
- Modelo\_10\_Fed\_Com\_523H\_Sundry\_Info\_\_\_Rev\_Name\_\_SHL\_\_BHL\_\_tgt\_\_csg\_\_HSU\_11.15.2021\_20211116132328.pdf
- 10\_M\_Choke\_Manifold\_20211116132317.pdf
- EOG\_BLM\_10M\_Annular\_Variance\_\_\_9.675\_in\_20211116132314.pdf
- Co\_Flex\_Hose\_Test\_Chart\_20211116132313.pdf
- 5.500in\_20.00\_VST\_P110EC\_VAM\_SFC\_20211116132311.pdf

<b>Well Name:</b> MODELO 10 FED COM	<b>Well Location:</b> T24S / R32E / SEC 10 / SWSW / 32.2406066 / -103.6699513	<b>County or Parish/State:</b> LEA / NM
<b>Well Number:</b> 523H	<b>Type of Well:</b> OIL WELL	<b>Allottee or Tribe Name:</b>
<b>Lease Number:</b> NMNM94850	<b>Unit or CA Name:</b>	<b>Unit or CA Number:</b>
<b>US Well Number:</b> 300254723400X1	<b>Well Status:</b> Approved Application for Permit to Drill	<b>Operator:</b> EOG RESOURCES INCORPORATED

Co\_Flex\_Hose\_Certification\_20211116132311.pdf

10\_M\_BOP\_Diagram\_9.675\_in\_20211116132311.pdf

7.625in\_29.70\_P110HC\_FXL\_20211116132311.pdf

5.500in\_20.00\_VST\_P110EC\_DWC\_C\_IS\_MS\_Spec\_Sheet\_20211116132310.pdf

Modelo\_10\_Fed\_Com\_523H\_Wall\_Plot\_20211116132248.pdf

Modelo\_10\_Fed\_Com\_523H\_Planning\_Report\_20211116132224.pdf

MODELO\_3\_FED\_COM\_523H\_C\_102\_20211115141756.pdf

Conditions of Approval

Additional Reviews

Modelo\_10\_Fed\_Com\_523H\_COA\_20211202115611.pdf

Operator Certification

I certify that the foregoing is true and correct. Title 18 U.S.C. Section 1001 and Title 43 U.S.C. Section 1212, make it a crime for any person knowingly and willfully to make to any department or agency of the United States any false, fictitious or fraudulent statements or representations as to any matter within its jurisdiction. Electronic submission of Sundry Notices through this system satisfies regulations requiring a submission of Form 3160-5 or a Sundry Notice.

<b>Operator Electronic Signature:</b> STAR HARRELL	<b>Signed on:</b> NOV 16, 2021 01:23 PM
<b>Name:</b> EOG RESOURCES INCORPORATED	
<b>Title:</b> Regulatory Specialist	
<b>Street Address:</b> 5509 CHAMPIONS DRIVE	
<b>City:</b> MIDLAND	<b>State:</b> TX
<b>Phone:</b> (432) 848-9161	
<b>Email address:</b> STAR_HARRELL@EOGRESOURCES.COM	

Field Representative

<b>Representative Name:</b> Eric Brorman		
<b>Street Address:</b> 5509 Champions Drive		
<b>City:</b> Midland	<b>State:</b> TX	<b>Zip:</b> 79706
<b>Phone:</b> (432)556-1276		
<b>Email address:</b> eric_brorman@eogresources.com		

BLM Point of Contact

<b>BLM POC Name:</b> CHRISTOPHER WALLS	<b>BLM POC Title:</b> Petroleum Engineer
<b>BLM POC Phone:</b> 5752342234	<b>BLM POC Email Address:</b> cwalls@blm.gov
<b>Disposition:</b> Approved	<b>Disposition Date:</b> 12/07/2021
<b>Signature:</b> Chris Walls	

<b>Well Name:</b> MODELO 10 FED COM	<b>Well Location:</b> T24S / R32E / SEC 10 / SWSW / 32.2406066 / -103.6699513	<b>County or Parish/State:</b> LEA / NM
<b>Well Number:</b> 523H	<b>Type of Well:</b> OIL WELL	<b>Allottee or Tribe Name:</b>
<b>Lease Number:</b> NMNM94850	<b>Unit or CA Name:</b>	<b>Unit or CA Number:</b>
<b>US Well Number:</b> 300254723400X1	<b>Well Status:</b> Approved Application for Permit to Drill	<b>Operator:</b> EOG RESOURCES INCORPORATED

CONFIDENTIAL

District I  
1625 N. French Dr., Hobbs, NM 88240  
Phone: (575) 393-6161 Fax: (575) 393-0720  
District II  
811 S. First St., Artesia, NM 88210  
Phone: (575) 748-1283 Fax: (575) 748-9720  
District III  
1000 Rio Brazos Road, Aztec, NM 87410  
Phone: (505) 334-6178 Fax: (505) 334-6170  
District IV  
1220 S. St. Francis Dr., Santa Fe, NM 87505  
Phone: (505) 476-3460 Fax: (505) 476-3462

State of New Mexico  
Energy, Minerals & Natural Resources  
Department  
OIL CONSERVATION DIVISION  
1220 South St. Francis Dr.  
Santa Fe, NM 87505

FORM C-102

Revised August 1, 2011

Submit one copy to appropriate

District Office

☐ AMENDED REPORT

## WELL LOCATION AND ACREAGE DEDICATION PLAT

<sup>1</sup> API Number <b>30-025-47234</b>	<sup>2</sup> Pool Code <b>96603</b>	<sup>3</sup> Pool Name <b>Triste Draw; Bone Spring</b>
<sup>4</sup> Property Code <b>325486</b>	<sup>5</sup> Property Name <b>MODELO 10 FED COM</b>	<sup>6</sup> Well Number <b>523H</b>
<sup>7</sup> OGRID No. <b>7377</b>	<sup>8</sup> Operator Name <b>EOG RESOURCES, INC.</b>	<sup>9</sup> Elevation <b>3637'</b>

<sup>10</sup>Surface Location

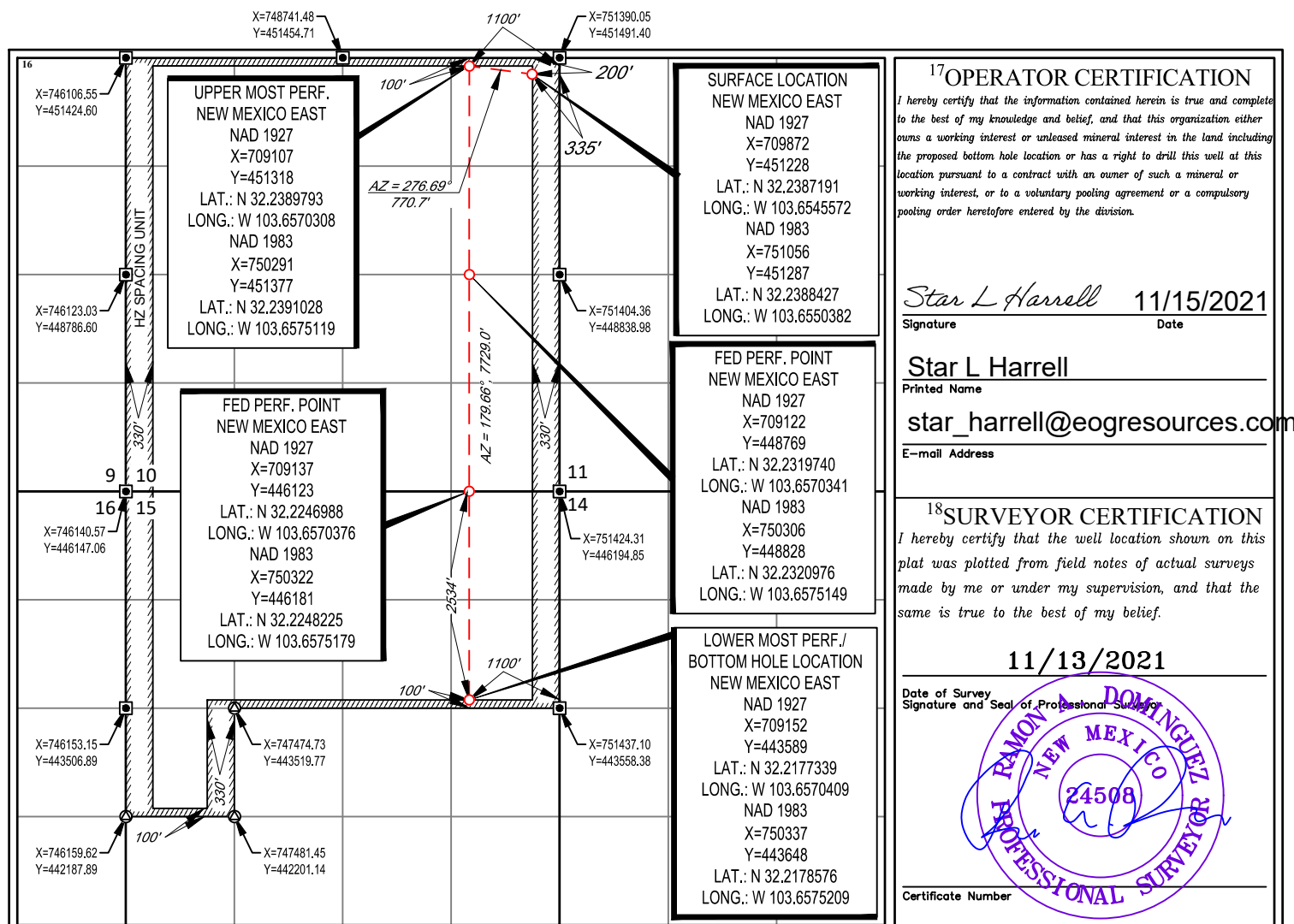
UL or lot no.	Section	Township	Range	Lot Idn	Feet from the	North/South line	Feet from the	East/West line	County
<b>A</b>	<b>10</b>	<b>24-S</b>	<b>32-E</b>	<b>-</b>	<b>200'</b>	<b>NORTH</b>	<b>335'</b>	<b>EAST</b>	<b>LEA</b>

<sup>11</sup>Bottom Hole Location If Different From Surface

UL or lot no.	Section	Township	Range	Lot Idn	Feet from the	North/South line	Feet from the	East/West line	County
<b>H</b>	<b>15</b>	<b>24-S</b>	<b>32-E</b>	<b>-</b>	<b>2534'</b>	<b>NORTH</b>	<b>1100'</b>	<b>EAST</b>	<b>LEA</b>

<sup>12</sup> Dedicated Acres <b>1000.00</b>	<sup>13</sup> Joint or Infill	<sup>14</sup> Consolidation Code	<sup>15</sup> Order No.
---	-------------------------------	----------------------------------	-------------------------

No allowable will be assigned to this completion until all interests have been consolidated or a non-standard unit has been approved by the division.



**Modelo 10 Fed Com 523H****Revised Permit Information 11/15/2021:**

Well Name: Modelo 10 Fed Com 523H

Location: SHL: 200' FNL &amp; 335' FEL, Section 10, T-24-S, R-32-E, Lea Co., N.M.

BHL: 2534' FNL &amp; 1100' FEL, Section 15, T-24-S, R-32-E, Lea Co., N.M.

**Casing Program:**

Hole Size	Interval	Csg OD	Weight	Grade	Conn	DFmin Collapse	DFmin Burst	DFmin Tension
16"	0' - 1,290'	13.375"	54.5#	J-55	STC	1.125	1.25	1.6
12.25"	0' - 4,000'	9.625"	40#	J-55	LTC	1.125	1.25	1.6
12.25"	4,000' - 4,790'	9.625"	40#	HCK-55	LTC	1.125	1.25	1.6
8.75"	0' - 10,588'	5.5"	17#	HCP-110	LTC	1.125	1.25	1.6
8.5"	10,588' - 18,639'	5.5"	17#	HCP-110	LTC	1.125	1.25	1.6

Variance is requested to waive the centralizer requirements for the 9-5/8" casing in the 12-1/4" hole size. An expansion additive will be utilized, in the cement slurry, for the entire length of the 12-1/4" hole interval to maximize cement bond and zonal isolation.

Variance is also requested to waive any centralizer requirements for the 5-1/2" casing in the 8-3/4" and 8-1/2" hole sizes. An expansion additive will be utilized, in the cement slurry, for the entire length of the 8-3/4" and 8-1/2" hole intervals to maximize cement bond and zonal isolation.

**Cementing Program:**

Depth	No. Sacks	Wt. ppg	Yld Ft <sup>3</sup> /sk	Slurry Description
1,290' 13.375"	390	13.5	1.73	Lead: Class C + 4.0% Bentonite Gel + 0.5% CaCl <sub>2</sub> + 0.25 lb/sk Cello-Flake (TOC @ Surface)
	100	14.8	1.34	Tail: Class C + 0.6% FL-62 + 0.25 lb/sk Cello-Flake + 0.2% Sodium Metasilicate (TOC @ 1,090')
4,790' 9.625"	700	12.7	2.22	Lead: Class C + 10% NaCl + 6% Bentonite Gel + 3% MagOx (TOC @ Surface)
	300	14.8	1.32	Tail: Class C + 10% NaCl + 3% MagOx (TOC @ 3,830')
18,639' 5.5"	640	11.0	3.21	Lead: Class H + 0.4% Halad-344 + 0.35% HR-601 + 3% Microbond (TOC @ 4,285')
	1960	14.4	1.2	Tail: Class H + 0.4% Halad-344 + 0.35% HR-601 + 3% Microbond (TOC @ 10,588')

**Modelo 10 Fed Com 523H**

Additive	Purpose
Bentonite Gel	Lightweight/Lost circulation prevention
Calcium Chloride	Accelerator
Cello-flake	Lost circulation prevention
Sodium Metasilicate	Accelerator
MagOx	Expansive agent
Pre-Mag-M	Expansive agent
Sodium Chloride	Accelerator
FL-62	Fluid loss control
Halad-344	Fluid loss control
Halad-9	Fluid loss control
HR-601	Retarder
Microbond	Expansive Agent

Note: Cement volumes based on bit size plus at least 25% excess in the open hole plus 10% excess in the cased-hole overlap section.

**Mud Program:**

Depth	Type	Weight (ppg)	Viscosity	Water Loss
0 – 1,290'	Fresh - Gel	8.6-8.8	28-34	N/c
1,290' – 4,790'	Brine	8.6-8.8	28-34	N/c
4,790' – 18,639'	Oil Base	8.8-9.5	58-68	N/c - 6

**Wellhead:**

EOG Resources Inc. (EOG) respectfully requests a variance from the minimum standards for well control equipment testing of Onshore Order No. 2 (item III.A.2.i) to allow a testing schedule of the blow out preventer (BOP) and blow out prevention equipment (BOPE) to include the following:

- Full BOPE test at first installation on the pad.
- Full BOPE test every 30 days per Onshore Order No. 2.
- Function test BOP elements per Onshore Order No. 2.
- Break testing BOP and BOPE coupled with batch drilling operations and production sections that do not penetrate the Wolfcamp or deeper formations.
- After the well section is cemented the BOP will be disconnected from the wellhead and walked with the rig to another well on the pad. The cemented well will be secured with a blind flange and a pressure gauge for monitoring.



## Modelo 10 Fed Com 523H

200' FNL  
335' FEL  
Section 10  
T-24-S, R-32-E

Revised Wellbore

KB: 3662'  
GL: 3637'

API: 30-025-47234

Bit Size: 16"  
13-3/8", 54.5#, J-55, STC, 0' - 1,290'

Bit Size: 12-1/4"  
9-5/8" 40#, J-55, LTC, 0' - 4,000'  
9-5/8" 40#, HCK-55, LTC, 4,000' - 4,790'

TOC: 4,285'

5-1/2" 17#, HCP-110, LTC@ 0' - 18,639'

KOP: 10,588'

Lateral: 18,639' MD, 11,010' TVD  
Upper Most Perf:  
100' FNL & 1100' FEL Sec. 10  
Lower Most Perf:  
2534' FNL & 1100' FEL Sec. 15  
BH Location: 2534' FNL & 1100' FEL  
Sec. 15  
T-24-S R-32-E

Bit Size: 8-1/2"

**District I**

1625 N. French Dr., Hobbs, NM 88240  
Phone:(575) 393-6161 Fax:(575) 393-0720

**District II**

811 S. First St., Artesia, NM 88210  
Phone:(575) 748-1283 Fax:(575) 748-9720

**District III**

1000 Rio Brazos Rd., Aztec, NM 87410  
Phone:(505) 334-6178 Fax:(505) 334-6170

**District IV**

1220 S. St Francis Dr., Santa Fe, NM 87505  
Phone:(505) 476-3470 Fax:(505) 476-3462

**State of New Mexico**  
**Energy, Minerals and Natural Resources**  
**Oil Conservation Division**  
**1220 S. St Francis Dr.**  
**Santa Fe, NM 87505**

CONDITIONS

Action 65544

## CONDITIONS

Operator: EOG RESOURCES INC P.O. Box 2267 Midland, TX 79702	OGRID: 7377
	Action Number: 65544
	Action Type: [C-103] NOI Change of Plans (C-103A)

## CONDITIONS

Created By	Condition	Condition Date
pkautz	None	12/8/2021