

Submit a Copy To Appropriate District  
Office  
District I – (575) 393-6161  
1625 N. French Dr., Hobbs, NM 88240  
District II – (575) 748-1283  
811 S. First St., Artesia, NM 88210  
District III – (505) 334-6178  
1000 Rio Brazos Rd., Aztec, NM 87410  
District IV – (505) 476-3460  
1220 S. St. Francis Dr., Santa Fe, NM  
87505

State of New Mexico  
Energy, Minerals and Natural Resources

Form C-103  
Revised July 18, 2013

OIL CONSERVATION DIVISION  
1220 South St. Francis Dr.  
Santa Fe, NM 87505

WELL API NO. 30-025-34165
5. Indicate Type of Lease STATE <input checked="" type="checkbox"/> FEE <input type="checkbox"/>
6. State Oil & Gas Lease No.
7. Lease Name or Unit Agreement Name Enron 9 State Com
8. Well Number 1
9. OGRID Number 372043
10. Pool name or Wildcat Johnson Ranch Wolfcamp
4. Well Location Unit Letter <u>O</u> : <u>660</u> feet from the <u>South</u> line and <u>1980</u> feet from the <u>East</u> line Section <u>9</u> Township <u>24S</u> Range <u>33E</u> NMPM County <u>LEA</u>
11. Elevation (Show whether DR, RKB, RT, GR, etc.) 3612 GR

12. Check Appropriate Box to Indicate Nature of Notice, Report or Other Data

NOTICE OF INTENTION TO:

PERFORM REMEDIAL WORK ☐ PLUG AND ABANDON ☐  
TEMPORARILY ABANDON ☐ CHANGE PLANS ☐  
PULL OR ALTER CASING ☐ MULTIPLE COMPL ☐  
DOWNHOLE COMMINGLE ☐  
CLOSED-LOOP SYSTEM ☐  
OTHER: ☐

SUBSEQUENT REPORT OF:

REMEDIAL WORK ☒ ALTERING CASING ☐  
COMMENCE DRILLING OPNS. ☒ P AND A ☐  
CASING/CEMENT JOB ☐  
OTHER: Temporarily Abandoned Zone, Recomplete ☒

13. Describe proposed or completed operations. (Clearly state all pertinent details, and give pertinent dates, including estimated date of starting any proposed work). SEE RULE 19.15.7.14 NMAC. For Multiple Completions: Attach wellbore diagram of proposed completion or recompletion.

**3/6/2021:** Set CIBP to isolate Wolfcamp perforations at 13135 ft. Top perforation for Wolfcamp zone at 13234 ft. No cement placed on top of plug. Notified NMOCD and performed MIT test on casing: 550 PSI for 30 minutes, good test.  
**3/10/2021:** Pressure build up on wellhead, notified NMOCD and decided to cement CIBP at 13135 ft with 14 PPG of Class H cement. EST TOC at 13098 ft.  
**3/12/2021:** Rerun MIT test on casing: 550 PSI for 30 minutes, good test, chart attached.  
**3/14/2021:** Log with gamma from 11950 to 11350 ft. Set secondary CIBP per NMOCD at 11930 ft. Perform MIT test on casing: 540 PSI for 30 minutes, good test. Perforate from 11722 ft to 11735 ft MD with 3 SPF. Pump 50 bbls of water into formation.

I hereby certify that the information above is true and complete to the best of my knowledge and belief.

SIGNATURE Ramsey TITLE Regulatory Analyst DATE 3/16/2021

Type or print name Bill Ramsey E-mail address: bramsey@taprk.com PHONE: 720-238-2787

**For State Use Only**

APPROVED BY: Kerry Fortner TITLE Compliance Officer A DATE 12/9/21

Conditions of Approval (if any)





Graphic Controls  
*Tap Rack*

CHART NO. MC MP-1000-1HR  
Bull Terrier  
METER S/N 8443  
7/29/16 CASING

TAKEN OFF  
1:30pm - 2:15pm  
#1

CHART PUT ON  
MARCH 14 2021

LOCATION

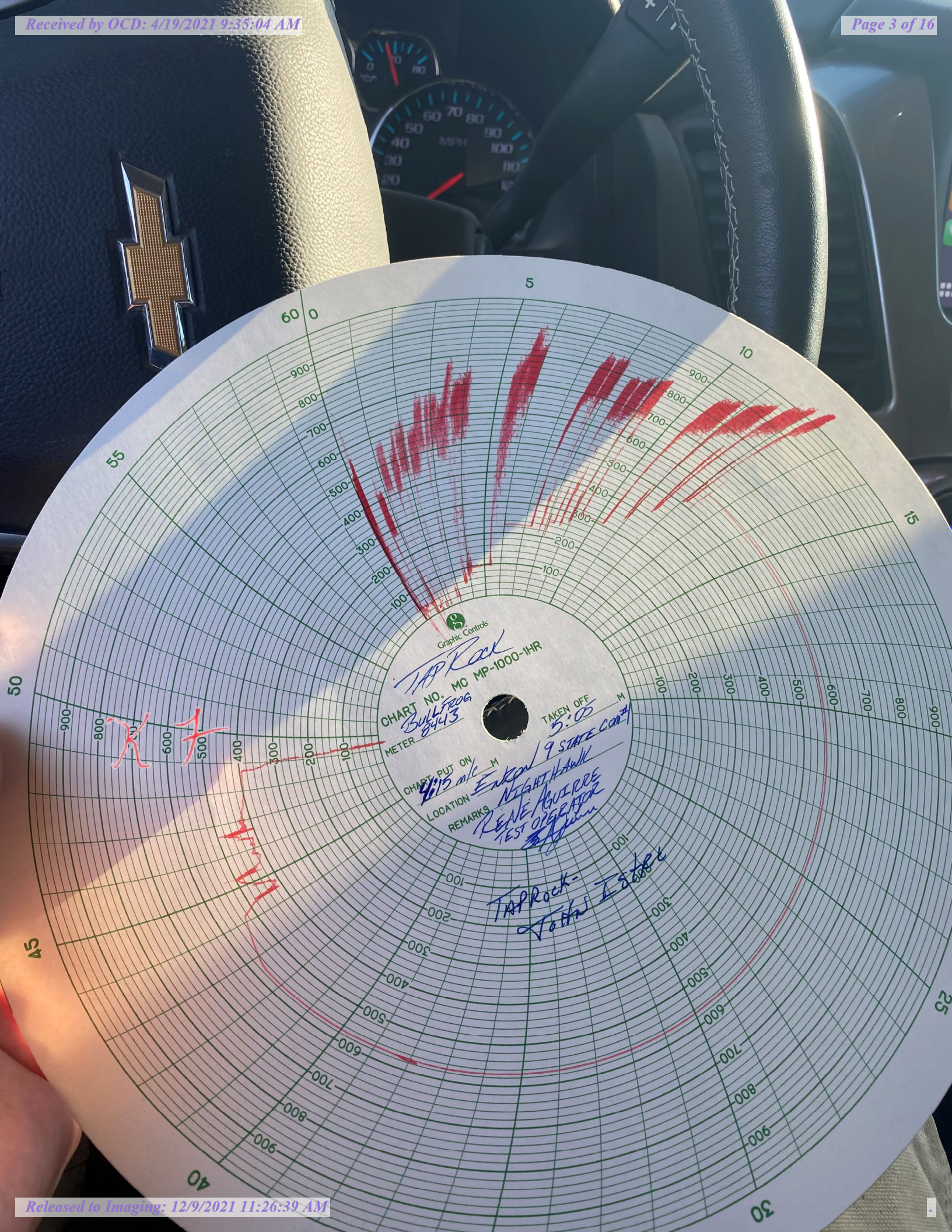
EBRON / 9 STATE COM  
Night Hawk

REMARKS

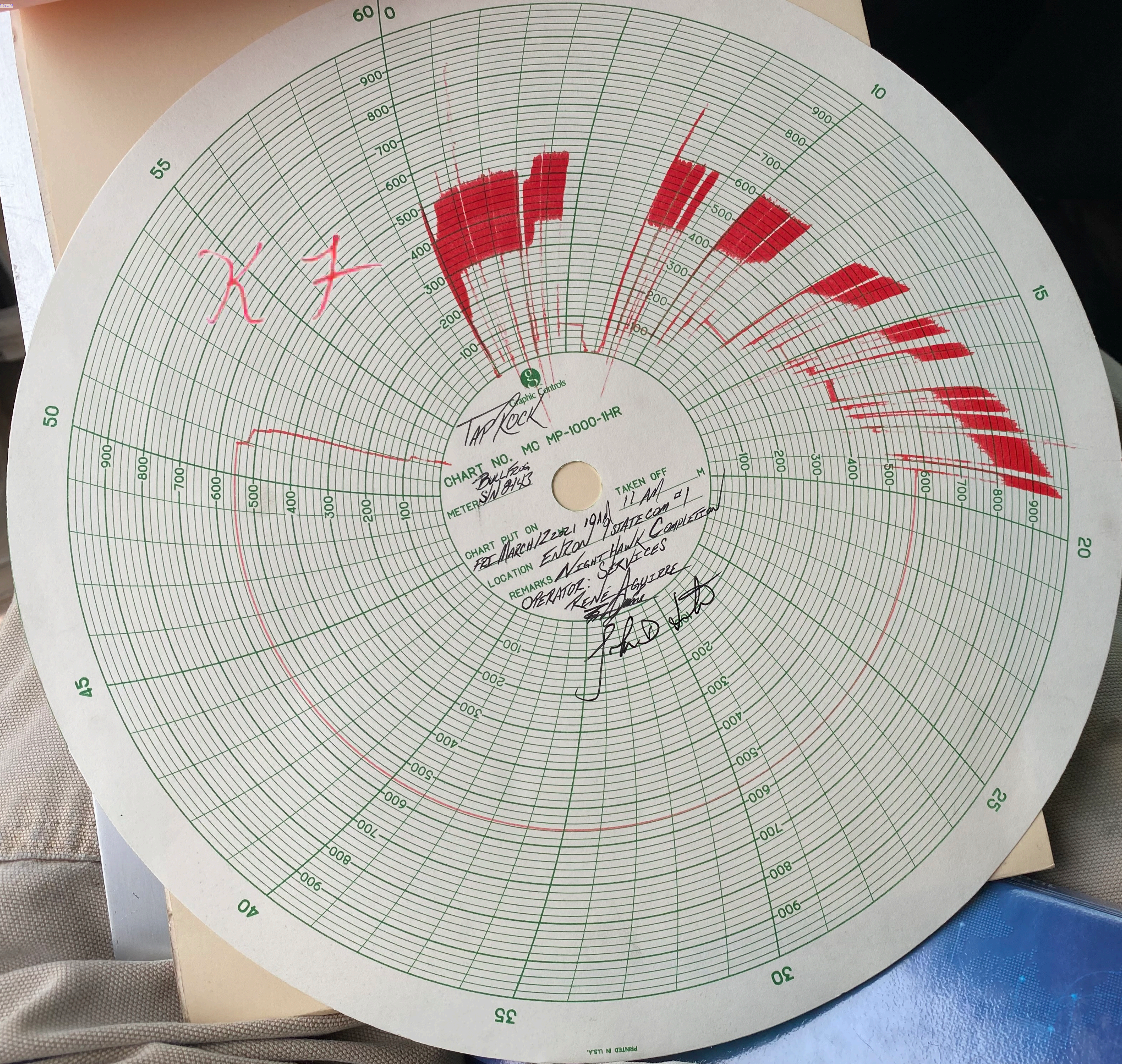
OPERATOR: Remy  
B. Jones

*John D. Smith*













**Job:** Recomplete 3BSC Interval

**Well:** Enron 9 State Com #1

**Est. Start Date:** 3/4/21

**Formation:** Wolfcamp B/C

**Engineer:** Alex Batista (281) 253-3999

**2<sup>nd</sup> Call:**

**Consultant:** John Istre (337) 258-2996

**Supervisor:** Gary Johnson (361) 230-3021



**OBJECTIVE:**

Tap Rock Operating would like to add the Third Bone Spring pool to the Enron 9 State Com 1 and re-complete at a depth of approximately 11,700 ft MD. The perforated interval is estimated to be 20 feet long and will only be completed in the Third Bone Spring Pool.

Enron 9 State Com #1			
AFE#		350-10139-001	
API#		30-025-34165	
RKB		26.0	
4.5" 15.10# P-110 Casing			
ID (in)	3.826		
Drift (in)	3.701		
Bottom	13,891	Top	12,219
85% Burst (psi)			
85% Collapse (psi)			
Capacity (bbls/ft)	0.0142		
Volume to FC (bbls)			
7.0" 29# S-95, N-80 & P-110 Casing			
ID (in)	6.184	Depth	12,580
Drift (in)	6.059		
85% Burst (psi)			
85% Collapse (psi)			
Capacity (bbls/ft)	0.0371		
9 5/8" 47# N-80 2 <sup>nd</sup> Intermediate Casing			
85% Burst (psi)			
85% Collapse (psi)			
Setting Depth (ft)	5,213		
Perforating Guns			
Old top perf	13,234	New top perf	11,700
SPF	6	Charge Type	
Phasing	60	EHD / Penetration	
Directions			
FROM INT. OF NM-128 W & DELAWARE BASIN RD. GO W. ON NM-128 +/- 3.3 MILES THEN TURN RIGHT (NORTH) ON BRININSTOOL RD. AFTER +/- 1.1 MILES TURN LEFT (WEST) ON LEASE ROAD. TURN RIGHT INTO LOCATION.			



### Change Well Head

1. Upon AOL, check pressure on all wellhead valves
2. Record SICP
3. Existing Well Head
  - 2" Cameron 5K Production Tree
4. Bullhead with approximately 500 bbls of fresh water or 10# brine
  - Mix with combination of scale/corrosion inhibitor/biocide/clay stabilizer
5. Confirm that well is dead for at least 30 minutes
  - If unable to kill well easily, set plug in tubing hanger as alternative option
6. Swap production tree with 7 1/16" frac valve for upcoming operations

### Set Plug and Run Ultra Sonic Imager

7. Notify NMOC Hobbs office 24 hours before running a full MIT test
  - Kerry Fortner (Compliance Officer)- 575-263-6633
  - Gary Robinson (Compliance Officer)- 575-263-4507
  - Eugene Bolton (Compliance Officer)- 575-840-5961
8. Run 6" GR/JB for the 7" casing to roughly 12,219' and tag crossover
  - Record depth of GR/JB run in Wellview
9. Run 3.5" GR/JB for the 4.5" liner (double check GR size) to roughly 13,200'
  - Record depth of GR/JB run in Wellview
10. Make Note of Fluid Level
  - Record fluid level in Wellview
11. Set bridge plug in 4.5" liner at 13,134'
  - If run into issues, evaluate setting in 7" casing instead
12. Pump more water in well to make sure hole is filled to surface (if needed)
13. Run ultrasonic imager tool for testing wellbore integrity to roughly 13,000' or just above the bridge plug, based on SLB recommended procedure
  - Tool should be able to log 4.5" and 7" section with same run
  - Hole should be filled with brine or freshwater
14. Shut in 7 1/16" frac valve
15. Run a full mechanical integrity test (MIT)
  - Must chart the test to keep for records
16. Wait on results of wellbore integrity
  - Estimated 24 hours to validate results
17. Proceed with next steps if casing determined to be in good condition
  - Evaluate alternative options depending on results

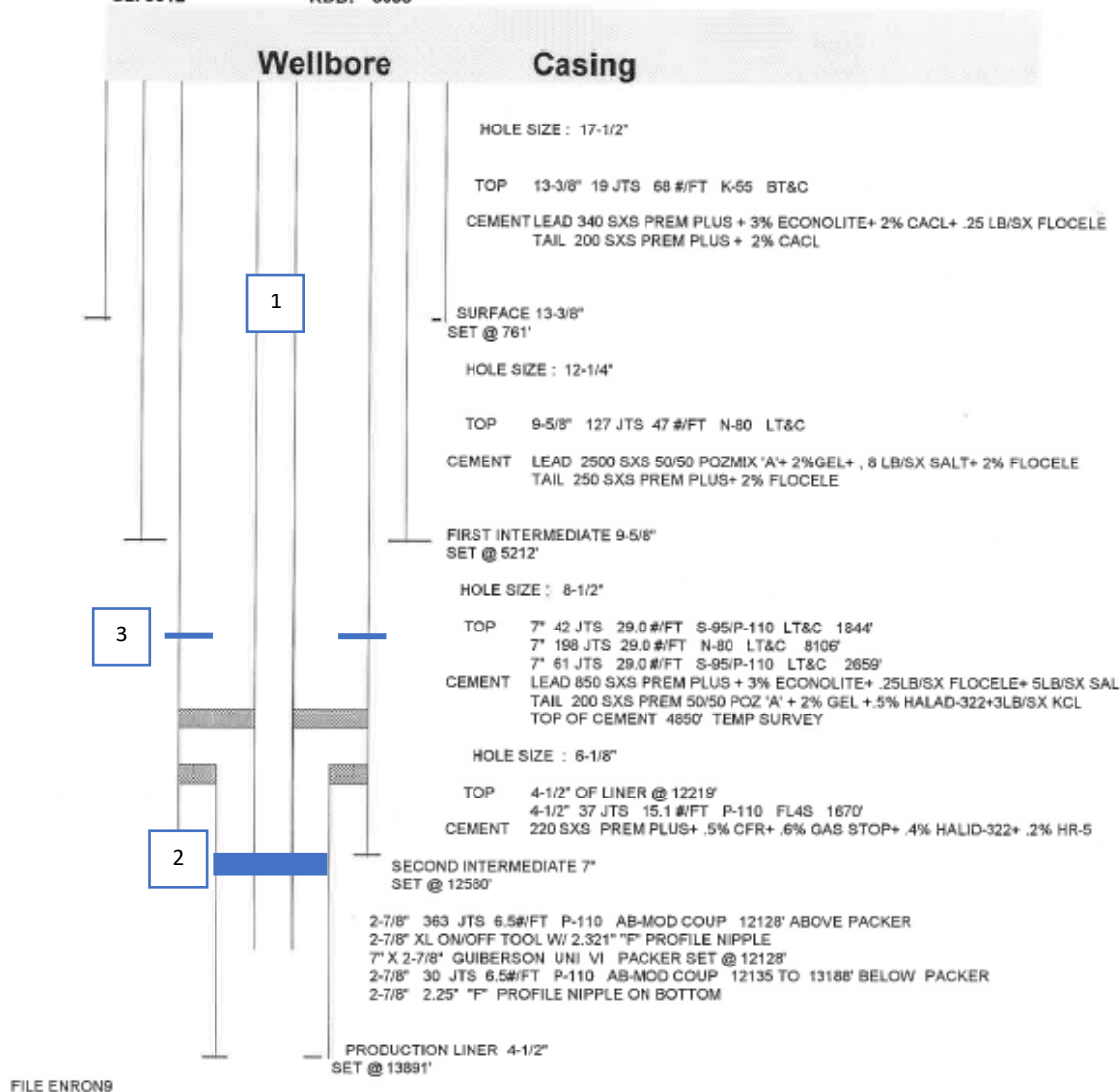


WELL NAME: ENRON "9" STATE COM #1  
 FIELD: JOHNSON RANCH  
 COUNTY: LEA  
 STATE: NEW MEXICO

## WELLBORE SCHEMATIC

GL: 3612'

KDB: 3638'



### Steps:

1. Make sure tubing is removed
2. Set CIBP at 12,600' to isolate original perfs
3. Perf new interval at 11,700'
  - a. Holes- 6 SPF
  - b. EHD average- 0.37" or 0.41"





**Job:** Recomplete 3BSC Interval

**Well:** Enron 9 State Com #1

**Est. Start Date:** 3/4/21

**Formation:** Wolfcamp B/C

**Engineer:** Alex Batista (281) 253-3999

**2<sup>nd</sup> Call:**

**Consultant:** John Istre (337) 258-2996

**Supervisor:** Gary Johnson (361) 230-3021



**OBJECTIVE:**

Tap Rock Operating would like to add the Third Bone Spring pool to the Enron 9 State Com 1 and re-complete at a depth of approximately 11,700 ft MD. The perforated interval is estimated to be 20 feet long and will only be completed in the Third Bone Spring Pool.

<b>Enron 9 State Com #1</b>			
AFE#		350-10139-001	
API#		30-025-34165	
RKB		26.0	
<b>4.5" 15.10# P-110 Casing</b>			
ID (in)	3.826		
Drift (in)	3.701		
Bottom	13,891	Top	12,219
85% Burst (psi)			
85% Collapse (psi)			
Capacity (bbls/ft)	0.0142		
Volume to FC (bbls)			
<b>7.0" 29# S-95, N-80 &amp; P-110 Casing</b>			
ID (in)	6.184	Depth	12,580
Drift (in)	6.059		
85% Burst (psi)			
85% Collapse (psi)			
Capacity (bbls/ft)	0.0371		
<b>9 5/8" 47# N-80 2<sup>nd</sup> Intermediate Casing</b>			
85% Burst (psi)			
85% Collapse (psi)			
Setting Depth (ft)	5,213		
<b>Perforating Guns</b>			
Old top perf	13,234	New top perf	11,700
SPF	6	Charge Type	
Phasing	60	EHD / Penetration	
<b>Directions</b>			
FROM INT. OF NM-128 W & DELAWARE BASIN RD. GO W. ON NM-128 +/- 3.3 MILES THEN TURN RIGHT (NORTH) ON BRININSTOOL RD. AFTER +/- 1.1 MILES TURN LEFT (WEST) ON LEASE ROAD. TURN RIGHT INTO LOCATION.			



## Change Well Head

1. Upon AOL, check pressure on all wellhead valves
2. Record SICP
3. Existing Well Head
  - 2" Cameron 5K Production Tree
4. Bullhead with approximately 500 bbls of fresh water or 10# brine
  - Mix with combination of scale/corrosion inhibitor/biocide/clay stabilizer
5. Confirm that well is dead for at least 30 minutes
  - If unable to kill well easily, set plug in tubing hanger as alternative option
6. Swap production tree with 7 1/16" frac valve for upcoming operations

## Set Plug and Run Ultra Sonic Imager

7. Notify NMOC Hobbs office 24 hours before running a full MIT test
  - Kerry Fortner (Compliance Officer)- 575-263-6633
  - Gary Robinson (Compliance Officer)- 575-263-4507
  - Eugene Bolton (Compliance Officer)- 575-840-5961
8. Run 6" GR/JB for the 7" casing to roughly 12,219' and tag crossover
  - Record depth of GR/JB run in Wellview
9. Run 3.5" GR/JB for the 4.5" liner (double check GR size) to roughly 13,200'
  - Record depth of GR/JB run in Wellview
10. Make Note of Fluid Level
  - Record fluid level in Wellview
11. Set bridge plug in 4.5" liner at 13,134'
  - If run into issues, evaluate setting in 7" casing instead
12. Pump more water in well to make sure hole is filled to surface (if needed)
13. Run ultrasonic imager tool for testing wellbore integrity to roughly 13,000' or just above the bridge plug, based on SLB recommended procedure
  - Tool should be able to log 4.5" and 7" section with same run
  - Hole should be filled with brine or freshwater
14. Shut in 7 1/16" frac valve
15. Run a full mechanical integrity test (MIT)
  - Must chart the test to keep for records
16. Wait on results of wellbore integrity
  - Estimated 24 hours to validate results
17. Proceed with next steps if casing determined to be in good condition
  - Evaluate alternative options depending on results

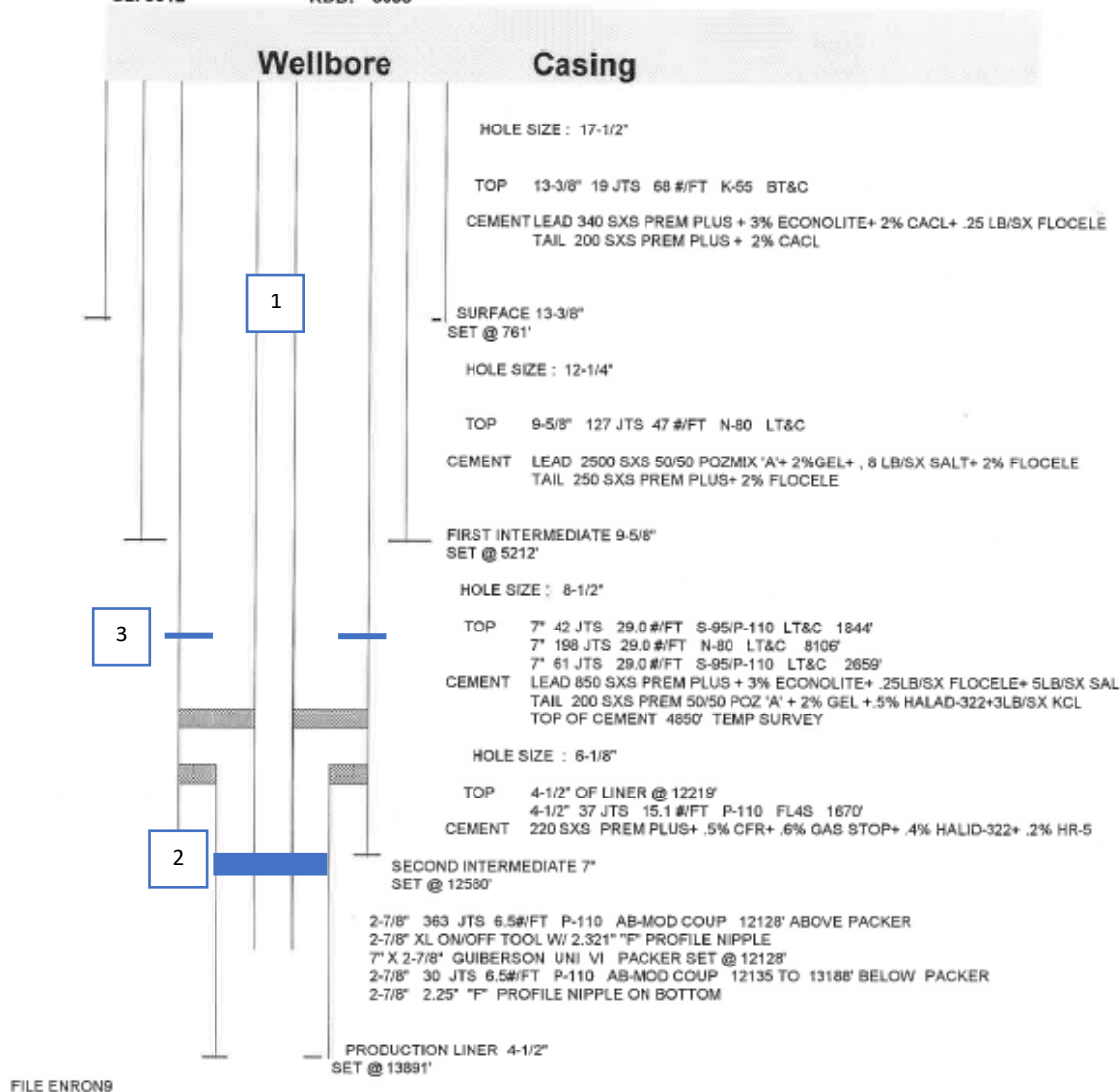


WELL NAME: ENRON "9"STATE COM #1  
 FIELD: JOHNSON RANCH  
 COUNTY: LEA  
 STATE: NEW MEXICO

## WELLBORE SCHEMATIC

GL: 3612'

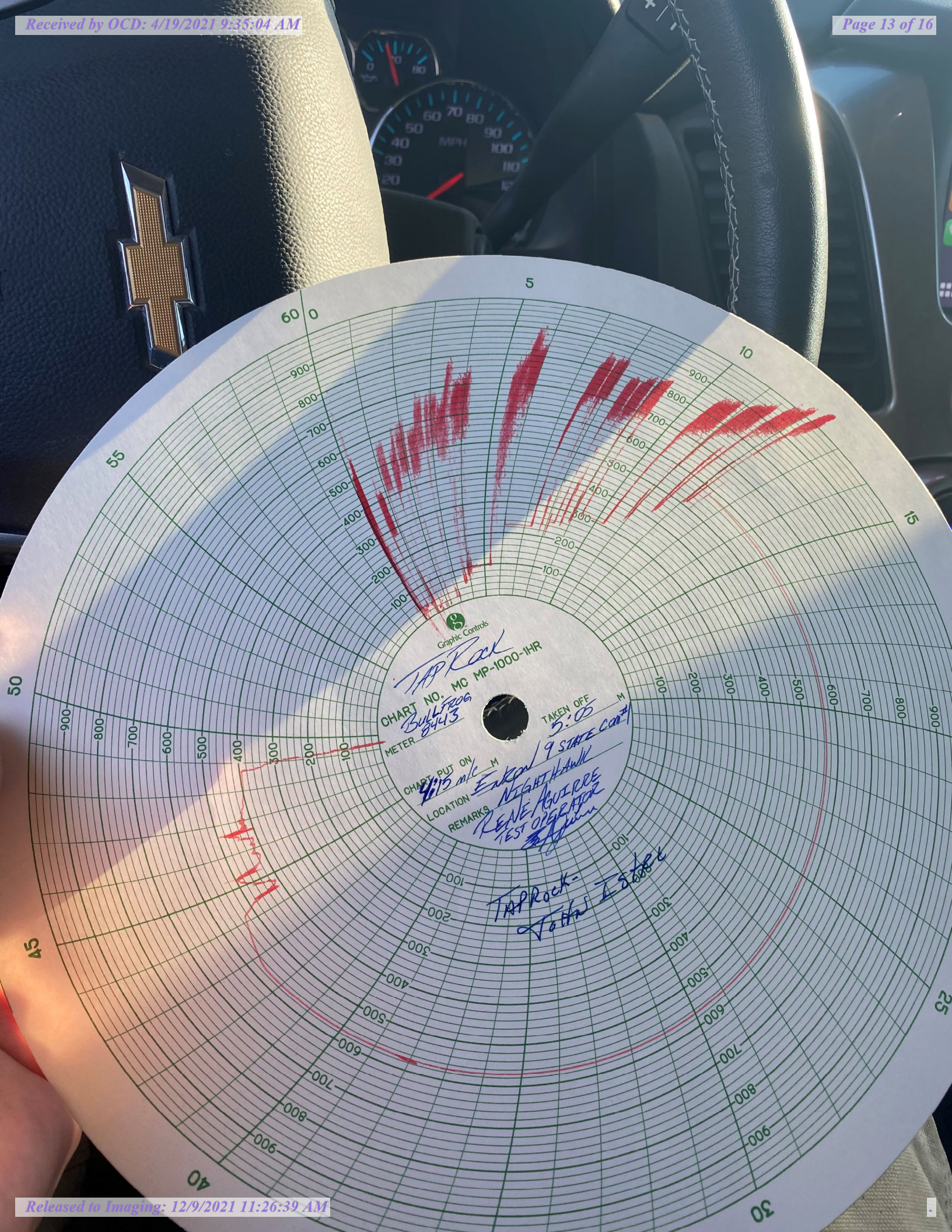
KDB: 3638'



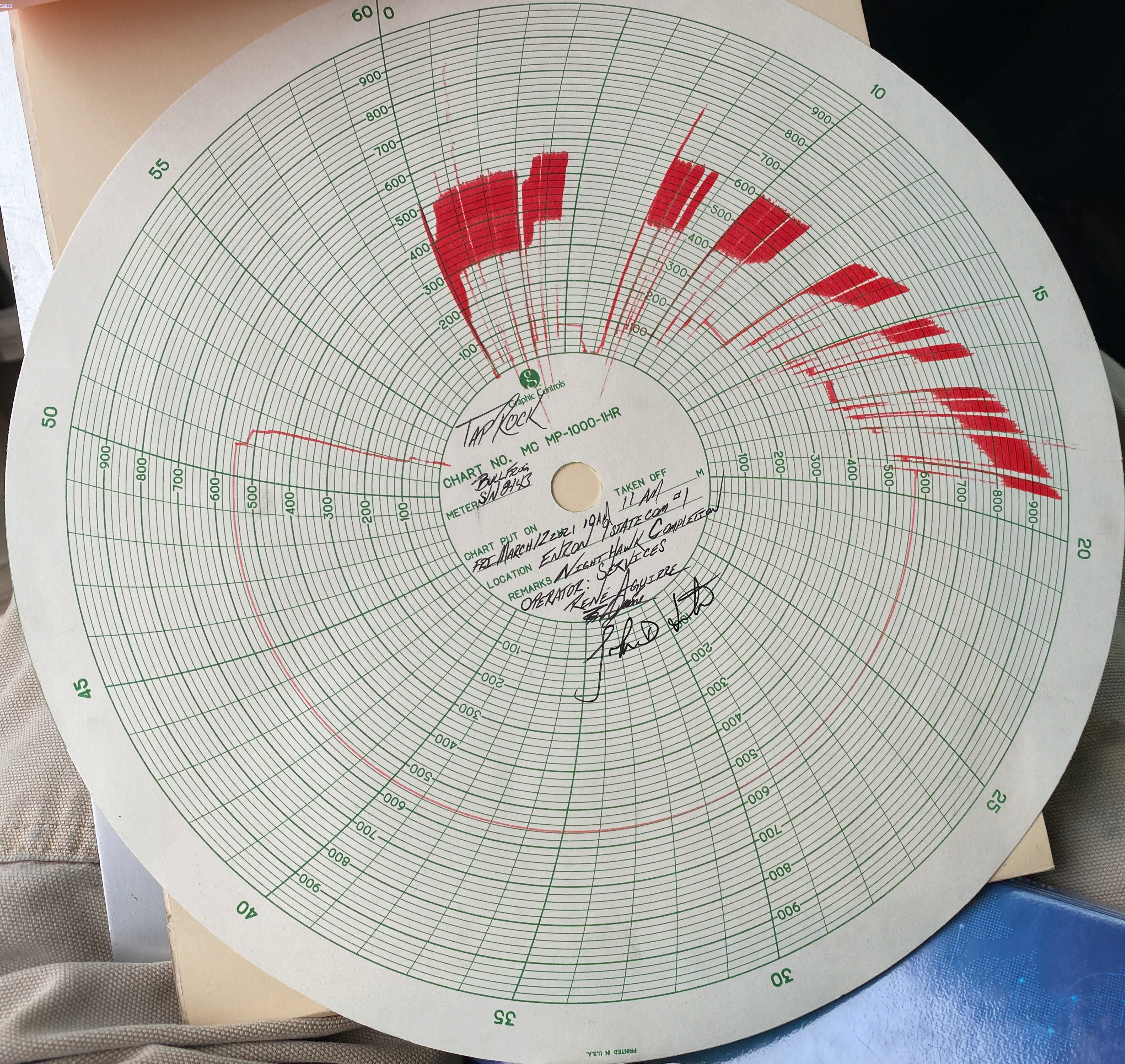
### Steps:

1. Make sure tubing is removed
2. Set CIBP at 12,600' to isolate original perfs
3. Perf new interval at 11,700'
  - a. Holes- 6 SPF
  - b. EHD average- 0.37" or 0.41"









**TAP ROCK**  
Graphic Controls  
CHART NO. MC MP-1000-1HR  
BULLFISH SN 0143  
CHART PUT ON FEB MARCH 12 2021 10 AM  
LOCATION ENRON STATE COM #1  
REMARKS NIGHT HAWK COMPLETION SERVICES  
OPERATOR: KENE AGUIERE  
John D. Smith





Graphic Controls  
*Taplak*

CHART NO. MC MP-1000-IHR  
Bull Terrier  
METER S/N 8443  
7/29/16 CASING

CHART PUT ON  
MARCH 14 2021

LOCATION

REMARKS

EBRON / 9 STATE COM #1  
Night Hawk  
OPERATOR: Remy  
B. Jones

TAKEN OFF  
1:30pm - 2:15pm

*John D. Smith*



**District I**

1625 N. French Dr., Hobbs, NM 88240  
Phone:(575) 393-6161 Fax:(575) 393-0720

**District II**

811 S. First St., Artesia, NM 88210  
Phone:(575) 748-1283 Fax:(575) 748-9720

**District III**

1000 Rio Brazos Rd., Aztec, NM 87410  
Phone:(505) 334-6178 Fax:(505) 334-6170

**District IV**

1220 S. St Francis Dr., Santa Fe, NM 87505  
Phone:(505) 476-3470 Fax:(505) 476-3462

**State of New Mexico**  
**Energy, Minerals and Natural Resources**  
**Oil Conservation Division**  
**1220 S. St Francis Dr.**  
**Santa Fe, NM 87505**

CONDITIONS

Action 24466

**CONDITIONS**

Operator: TAP ROCK OPERATING, LLC 523 Park Point Drive Golden, CO 80401	OGRID: 372043
	Action Number: 24466
	Action Type: [C-103] Sub. Workover (C-103R)

**CONDITIONS**

Created By	Condition	Condition Date
kfortner	None	12/9/2021