

State of New Mexico
Energy, Minerals and Natural Resources

District I – (575) 393-6161
1625 N. French Dr., Hobbs, NM 88240
District II – (575) 748-1283
811 S. First St., Artesia, NM 88210
District III – (505) 334-6178
1000 Rio Brazos Rd., Aztec, NM 87410
District IV – (505) 476-3460
1220 S. St. Francis Dr., Santa Fe, NM 87505

OIL CONSERVATION DIVISION
1220 South St. Francis Dr.
Santa Fe, NM 87505WELL API NO.
30-025-104805. Indicate Type of Lease
STATE ☐ FEE ☒

6. State Oil & Gas Lease No.

7. Lease Name or Unit Agreement Name
Langlie Mattix Penrose Sand Unit8. Well Number **#134**9. OGRID Number
24097410. Pool name or Wildcat
Langlie Mattix; 7 Rivers; Q; Grbg

SUNDRY NOTICES AND REPORTS ON WELLS

(DO NOT USE THIS FORM FOR PROPOSALS TO DRILL OR TO DEEPEN OR PLUG BACK TO A DIFFERENT RESERVOIR. USE "APPLICATION FOR PERMIT" (FORM C-101) FOR SUCH PROPOSALS.)

1. Type of Well: Oil Well ☒ Gas Well ☐ Other ☐2. Name of Operator
Legacy Reserves Operating LP3. Address of Operator
P.O. Box 10848, Midland, TX 79702

4. Well Location

Unit Letter **E** : **1980** feet from the **N** line and **660** feet from the **W** line
Section **27** Township **22S** Range **37E** NMPM County **Lea**11. Elevation (Show whether DR, RKB, RT, GR, etc.)
3341' GR

12. Check Appropriate Box to Indicate Nature of Notice, Report or Other Data

NOTICE OF INTENTION TO:

PERFORM REMEDIAL WORK ☐ PLUG AND ABANDON ☐
TEMPORARILY ABANDON ☐ CHANGE PLANS ☐
PULL OR ALTER CASING ☐ MULTIPLE COMPL ☐
DOWNHOLE COMMINGLE ☐
CLOSED-LOOP SYSTEM ☐
OTHER: ☐

SUBSEQUENT REPORT OF:

REMEDIAL WORK ☐ ALTERING CASING ☐
COMMENCE DRILLING OPNS. ☐ **P AND A** ☒
CASING/CEMENT JOB ☐ PNR
OTHER: ☐

13. Describe proposed or completed operations. (Clearly state all pertinent details, and give pertinent dates, including estimated date of starting any proposed work). SEE RULE 19.15.7.14 NMAC. For Multiple Completions: Attach wellbore diagram of proposed completion or recompletion.

01/31/22 MIRU plugging equipment. NU well head, ND BOP. RIH w/ wireline & tagged plug @ 3437'. Perf'd @ 3437'. Pressured up on perfs. Circ'd hole w/ 135 bbls MLF. Pressured tested csg, held 500 PSI. 02/01/22 Spotted 35 sx class C cmt @ 3437-3206'. WOC. Tagged plug @ 3185'. Spotted 25 sx class C cmt @ 2530-2381'. WOC. Tagged plug @ 2366'. Spotted 75 sx class C cmt @ 1540-1092'. WOC. 02/02/22 Tagged plug @ 1254'. Re-spotted 25 sx cmt @ 1254-1105'. Perf'd @ 211'. ND BOP. Flanged up well head. 02/07/22 Pressured up on perfs to 700 PSI. Circ'd 40 sx class C cmt @ 252' to surface. Rigged down & moved off. **02/08/22** Moved in backhoe and welder. Cut off well head & anchors. Kerry Fortner w/ OCD verified cmt @ surface via picture text message. Welded on "Under Ground Dry Hole Marker". Backfilled cellar, cut off deadmen, cleaned location, and moved off.

Spud Date:

Rig Release Date:

I hereby certify that the information above is true and complete to the best of my knowledge and belief.

SIGNATURE

TITLE Regulatory TechnicianDATE 2/09/2022

Type or print name

E-mail address: mreyes@legacyreserves.com PHONE: (432) 221-6358

For State Use Only

APPROVED BY:

TITLE Compliance Officer ADATE 2/11/22

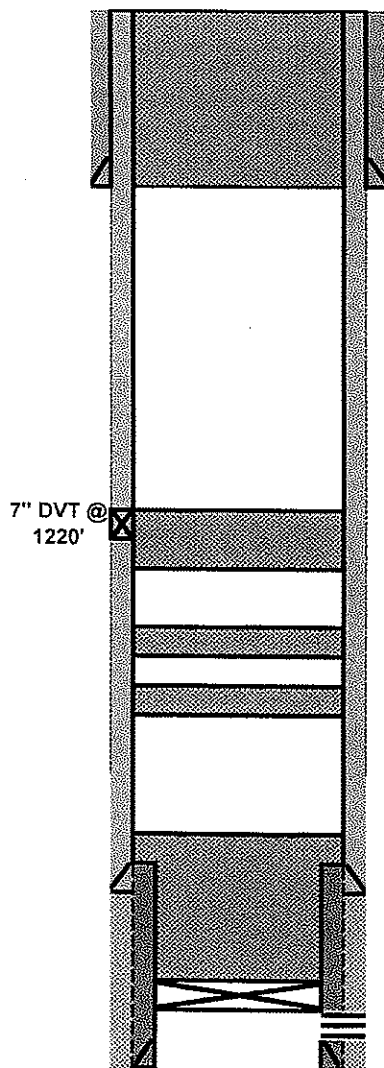
Conditions of Approval (if any)

575-263-6633

Legacy		PLUGGED	
Author:	Abby @ BCM	Well No.	#134
Well Name	Langlie Mattix Penrose Sand Unit	API #:	30-025-10480
Field/Pool	LM; 7 Rvs, Qn, Grbg	Location:	Sec 27, T22S, R37E
County	Lea		1980 FNL & 660 FEL
State	New Mexico	GL:	3341
Spud Date	2/16/1937		

Description	O.D.	Grade	Weight	Depth	Hole	Cmt Sx	TOC
Surface Csg	10 3/4		40#	161	13 3/7	100	0
Prod Csg	7		22#	3,385	8 1/2	400	0
Liner	5		15#	3385-3675	6 1/4	250	3,385

Formation Top	
T/Salt	1490
B/Salt	2480
Anhy	1166 +/-
Yates	2653 +/-
7 Rivers	2851 +/-
Queen	3414 +/-



10 3/4 40# CSG @ 161
Hole Size: 13 3/7

5. Perf'd @ 211'. Pressured up on perms to 700 PSI. Circ'd 40 sx class C cmt @ 252' to surface.

4. Spotted 75 sx class C cmt @ 1540-1092'. WOC. Tagged plug @ 1254'. Re-spotted 25 sx cmt @ 1254-1105'.

3. Spotted 25 sx class C cmt @ 2530-2381'. WOC. Tagged plug @ 2366'.

2. Spotted 35 sx class C cmt @ 3437-3206'. WOC. Tagged plug @ 3185'.

1. RIH w/ wireline & tagged plug @ 3437'. Perf'd @ 3437'. Pressured up on perms. Circ'd hole w/ 135 bbls MLF. Pressured tested csg, held 500 PSI.

7 22# CSG @ 3,385
Hole Size: 8 1/2

Perfs @ 3552-3645
5" Liner 15# set @ 3385-3675

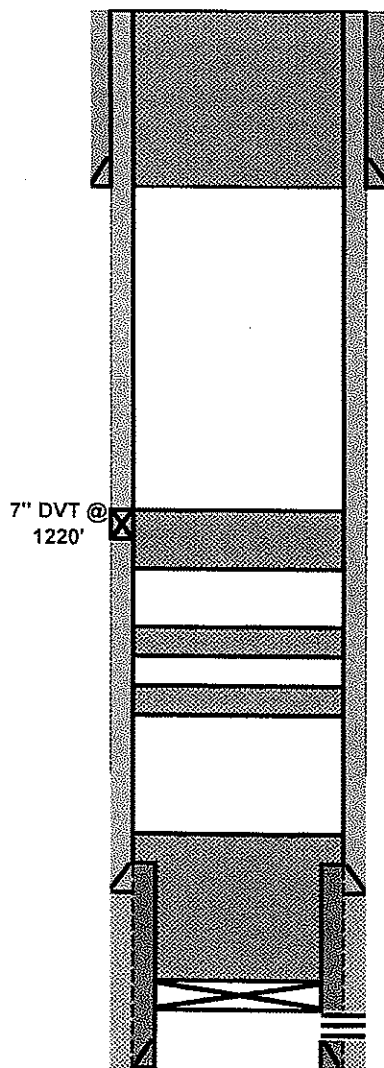
TD @ 3675
TDPB @ 3610

4/10/1937: Open hole shot with Nitro 340 qts and 104 qts (1938).
8/17/1970: Attempt to fish junk (91' 5" OD liner and misc cable tool equip) and cleanout well. Unsuccessful in running impression block. Leave junk in hole. Lost 6" bit and 57' of 2 7/8" DP while drilling out beside junk. Could not fish. Filled OH with 600 sxs, 300 sxs, 75 sxs, 35 sxs and 35 sxs cement and set 2 whipstocks at 3425' and 3405' and drilled new hole to 3675' TD. Installed 5" liner at 3305'-3675' and cemented w/ 250 sxs, perforated 3522'-3645', and fraced new perms w/ 60,000 gal and 110,000# sand.

Legacy		PLUGGED	
Author:	Abby @ BCM	Well No.	#134
Well Name	Langlie Mattix Penrose Sand Unit	API #:	30-025-10480
Field/Pool	LM; 7 Rvs, Qn, Grbg	Location:	Sec 27, T22S, R37E
County	Lea		1980 FNL & 660 FEL
State	New Mexico	GL:	3341
Spud Date	2/16/1937		

Description	O.D.	Grade	Weight	Depth	Hole	Cmt Sx	TOC
Surface Csg	10 3/4		40#	161	13 3/7	100	0
Prod Csg	7		22#	3,385	8 1/2	400	0
Liner	5		15#	3385-3675	6 1/4	250	3,385

Formation Top	
T/Salt	1490
B/Salt	2480
Anhy	1166 +/-
Yates	2653 +/-
7 Rivers	2851 +/-
Queen	3414 +/-



10 3/4 40# CSG @ 161
Hole Size: 13 3/7

5. Perf'd @ 211'. Pressured up on perfs to 700 PSI. Circ'd 40 sx class C cmt @ 252' to surface.

4. Spotted 75 sx class C cmt @ 1540-1092'. WOC. Tagged plug @ 1254'. Re-spotted 25 sx cmt @ 1254-1105'.

3. Spotted 25 sx class C cmt @ 2530-2381'. WOC. Tagged plug @ 2366'.

2. Spotted 35 sx class C cmt @ 3437-3206'. WOC. Tagged plug @ 3185'.

1. RIH w/ wireline & tagged plug @ 3437'. Perf'd @ 3437'. Pressured up on perfs. Circ'd hole w/ 135 bbls MLF. Pressured tested csg, held 500 PSI.

7 22# CSG @ 3,385
Hole Size: 8 1/2

Perfs @ 3552-3645
5" Liner 15# set @ 3385-3675

TD @ 3675
TDPB @ 3610

4/10/1937: Open hole shot with Nitro 340 qts and 104 qts (1938).
8/17/1970: Attempt to fish junk (91' 5" OD liner and misc cable tool equip) and cleanout well. Unsuccessful in running impression block. Leave junk in hole. Lost 6" bit and 57' of 2 7/8" DP while drilling out beside junk. Could not fish. Filled OH with 600 sxs, 300 sxs, 75 sxs, 35 sxs and 35 sxs cement and set 2 whipstocks at 3425' and 3405' and drilled new hole to 3675' TD. Installed 5" liner at 3305'-3675' and cemented w/ 250 sxs, perforated 3522'-3645', and fraced new perfs w/ 60,000 gal and 110,000# sand.

District I
1625 N. French Dr., Hobbs, NM 88240
Phone:(575) 393-6161 Fax:(575) 393-0720
District II
811 S. First St., Artesia, NM 88210
Phone:(575) 748-1283 Fax:(575) 748-9720
District III
1000 Rio Brazos Rd., Aztec, NM 87410
Phone:(505) 334-6178 Fax:(505) 334-6170
District IV
1220 S. St Francis Dr., Santa Fe, NM 87505
Phone:(505) 476-3470 Fax:(505) 476-3462

State of New Mexico
Energy, Minerals and Natural Resources
Oil Conservation Division
1220 S. St Francis Dr.
Santa Fe, NM 87505

CONDITIONS

Action 80296

CONDITIONS

Operator: LEGACY RESERVES OPERATING, LP 15 Smith Road Midland, TX 79705	OGRID: 240974
	Action Number: 80296
	Action Type: [C-103] Sub. Plugging (C-103P)

CONDITIONS

Created By	Condition	Condition Date
kfortner	Need C103Q with marker pics to release	2/11/2022