

Office
 District I – (575) 393-6161
 1625 N. French Dr., Hobbs, NM 88240
 District II – (575) 748-1283
 811 S. First St., Artesia, NM 88210
 District III – (505) 334-6178
 1000 Rio Brazos Rd., Aztec, NM 87410
 District IV – (505) 476-3460
 1220 S. St. Francis Dr., Santa Fe, NM
 87505

State of New Mexico
 Energy, Minerals and Natural Resources

Form C-103
 Revised July 18, 2013

OIL CONSERVATION DIVISION
 1220 South St. Francis Dr.
 Santa Fe, NM 87505

WELL API NO. 30-015-23682
5. Indicate Type of Lease STATE <input checked="" type="checkbox"/> FEE <input type="checkbox"/>
6. State Oil & Gas Lease No. LG-2040
7. Lease Name or Unit Agreement Name New Mexico DB State Com
8. Well Number 1
9. OGRID Number 7377
10. Pool name or Wildcat Antelope Sink; Upper Penn

SUNDRY NOTICES AND REPORTS ON WELLS (DO NOT USE THIS FORM FOR PROPOSALS TO DRILL OR TO DEEPEN OR PLUG BACK TO A DIFFERENT RESERVOIR. USE "APPLICATION FOR PERMIT" (FORM C-101) FOR SUCH PROPOSALS.)	
1. Type of Well: Oil Well <input type="checkbox"/> Gas Well <input type="checkbox"/> Other P&A <input type="checkbox"/>	
2. Name of Operator EOG Resources, Inc.	
3. Address of Operator 104 South Fourth Street, Artesia, NM 88210	
4. Well Location Unit Letter <u>F</u> : <u>1980</u> feet from the <u>North</u> line and <u>1980</u> feet from the <u>West</u> line Section <u>7</u> Township <u>19S</u> Range <u>24E</u> NMPM Eddy County	
11. Elevation (Show whether DR, RKB, RT, GR, etc.) 3839'GR	

12. Check Appropriate Box to Indicate Nature of Notice, Report or Other Data

NOTICE OF INTENTION TO:

PERFORM REMEDIAL WORK ☐ PLUG AND ABANDON ☐
 TEMPORARILY ABANDON ☐ CHANGE PLANS ☐
 PULL OR ALTER CASING ☐ MULTIPLE COMPL ☐
 DOWNHOLE COMMINGLE ☐
 CLOSED-LOOP SYSTEM ☐
 OTHER: ☐

SUBSEQUENT REPORT OF:

REMEDIAL WORK ☐ ALTERING CASING ☐
 COMMENCE DRILLING OPNS. ☐ P AND A ☒
 CASING/CEMENT JOB ☐
 OTHER: ☐

13. Describe proposed or completed operations. (Clearly state all pertinent details, and give pertinent dates, including estimated date of starting any proposed work). SEE RULE 19.15.7.14 NMAC. For Multiple Completions: Attach wellbore diagram of proposed completion or recompletion.

12/2/21 - MIRU plugging equipment.

12/3/21 - Pumped 40 bbl brine to kill well. NU BOP. Pulled packer and tubing.

12/6/21 - TIH & tag existing CIBP at 8097'. PU to 8094' & pumped cement plug: lead with 47 bbl brine. 25 sx Class "H", 1.18 yield, 14.8#, 3 bbl mix water, 45.75 bbl displacement. PU to 7241' & pumped cement plug: lead with 25 bbl brine, pump 30 sx Class "H", 1.18 yeild, 14.8#, 3.75 bbl mix water, 12 bbl displacement. Tubing. pressured up to 1200 psi on displacement. Displacement cut short & tubing stuck. Expected that tubing cemented in hole due to spotting unbalanced plugs. 52" stretch at 32k over string weight.

12/7/21 - RIH with 1 7/16" free point to 1632' and set down. POOH with free point and RIH with weight bar and set down at 1652'.

12/9/21 - MIRU coil tubing unit. PU BHA with 2.2" OD bit. RIH & tag up at 1694'. Drilled cement and broke through at 2760'. Continued RIH to 7266'. Tubing clear. POOH. Release Coil unit

12/10/21 - RIH with free point. Tubing 100% free at 6850'. Attempt RIH with 2.25" chemical cutter. Set down at 2052'. POOH

12/13/21 - RIH with free point. Tubing 100% free at 6850'. Attempt RIH with 2.25" chemical cutter. Set down at 2052'. POOH

12/16/21 - Lead time on dump bail tools longer than expect. Decision made to cut & fish tubing. RIH w/ 1.875" chemical cutter. Position & cut at 6850'. POOH w/ 2 7/8" tubing.

CONTINUED ON NEXT PAGE:

Spud Date:

Approved for plugging of well bore only. Liability under bond is retained pending Location cleanup & receipt of C-103Q (Subsequent Report of Well Plugging) which may be found at OCD Web Page, OCD Permitting @ www.emnrd.state.nm.us

I hereby certify that the information above is true and complete to the best of my knowledge and belief.

SIGNATURE Tina Huerta TITLE Regulatory Specialist DATE February 17, 2022

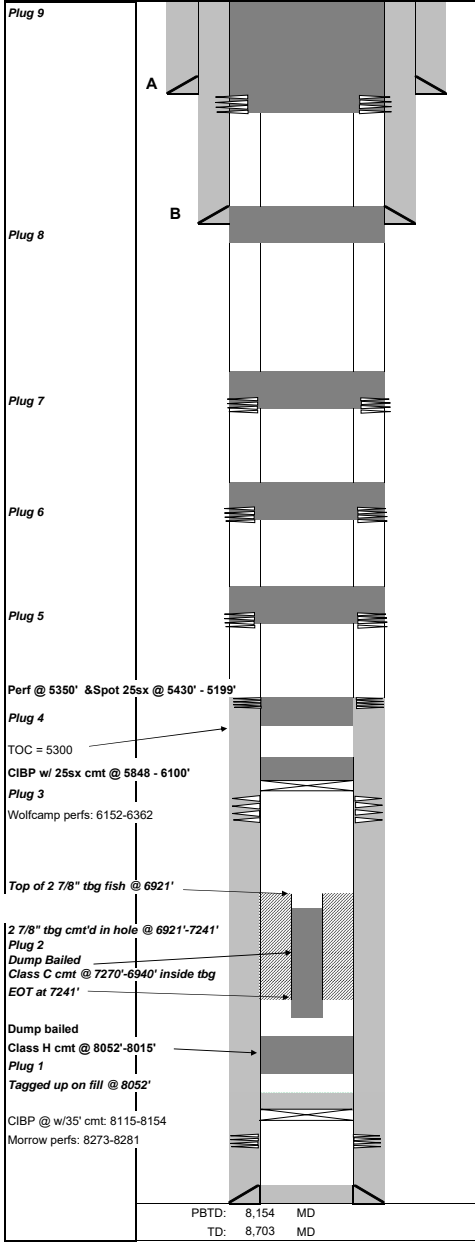
Type or print name Tina Huerta E-mail address: tina_huerta@eogresources.com PHONE: 575-748-4168
For State Use Only

APPROVED BY: [Signature] TITLE Staff Manager DATE 2/17/2022
 Conditions of Approval (if any):

New Mexico DB State Com 1
30-015-23682
Unit Letter F of Section 7-19S-24E
Eddy County, New Mexico
Page 2

12/17/21 - MIRU & MU fishing tools. Shoe, wash pipe, jars. TIH & tag top of fish at 6840 DPM. Wash over fish to 6857'.
12/20/21 - Wash over fish to 6913'.
12/21/21 - TOO H with BHA. RIH with BHA & new shoe. Wash over fish to 6920'.
12/22/21 - Continue wash over to 6921'. Slow progress. Rig broke down.
12/23/21 - Rig repaired. TOO H with BHA. TIH with BHA & new shoe.
12/27/21 - Tag up on fish & continue to mill. No progress. POOH with wash over BHA. RIH with overshot & attempt to latch onto fish. Grapple would not engage.
12/28/21 - MIRU and NU BOP. Set down 3k on fish. RIH with 2.25" GR/JB through tubing. Tag up at 6907'. POOH. MU 1.81" GR/JB & RIH. Tag up at 6907'. POOH w/ WL.
12/29/21 - Work & attempt to engage grapple. Fish fell 3'. RIH with GR/JB. Tag up at 6879'. POOH with tubing. 2 1/2 joints recovered. New fish top at 6921'.
12/30/21 - RIH with impression block. Tag fish top at 6921'. POOH with impression block. RIH with shoe & full opening top sub. Engage fish. RIH with 2.25" GR/JB on WL. Tag up at 6960'. Work through several times & RIH to 7300'.
1/3/22 - Decision made to dump bail cement through tubing. RIH with swedge on WL. Tag up at 6918. Could not work through POOH. RIH with 2" dump bailer loaded with water. Tag up at 6878'. POOH. Disc broke on bottom. POOH with 2 7/8" tubing. TIH with concave mill & tag up at 6921'. Dress off 14" of top of fish. POOH.
1/4/22 - MU overshot with pack off. TIH tag up on fish. Rotate and drop over fish. Could not get full latch. Slip off with 2k overpull. Set down 5k on fish. RIH with 2.25" swedge on WL. Pass through end of tubing & tag up at 8058' & POOH. RIH with 2" dump bailer dummy run with water to 8058'. Glass broke premature. WL company will manufacture more durable bailer bottoms.
1/7/22 - MU 50' x 2" dump bailer. Make dummy run with bailer filled with water. Tag at 8052'. Fired bailer charge. POOH. Successful bailer dump. Made 6 runs with bailer & dumped Class "H" cement on top of tag at 8052' dumping 6' higher each run for a total of 37'. Cement top at 8015'. Made 10 bailer runs Class "C" cement at 7270' inside tubing fish. Approximately 22' per run.
1/8/22 - RIH with WL & tag top of cement at 7018'. Made 3 more dump bail runs with Class "C" cement. Top of cement at 6940'. Total cement plug at 7270'-6940' with a total of 8 sx Class "C" cement. POOH with WL & 2 7/8" tubing with overshot.
1/10/22 - RIH with 4.45" GR/JB on WL to 6130'. Set a 5 1/2" CIBP at 6100', tagged. Loaded hole with MLF & attempted to test CIBP. No test. Slow bleed down. Pump 25 sx Class "C" cement on top of CIBP to 5848', tagged.
1/11/22 - RIH & tested casing up and down the hole. RIH with WL & perforated 5.5" casing at 5350'. Attempted injection. Held 600 psi. POOH with packer. Spotted a 25 sx Class "C" cement plug from 5430'-5190' estimated TOC.
1/12/22 - Tagged TOC 5199'. Perforated at 4838'. Attempted injection rate. Pressured up to 1000 psi, no injection. Held pressure for 5 min. Bled off psi. Pumped a 25 sx Class "C" cement plug from 4904'-4664' estimated TOC.
1/13/22 - Tagged TOC 4645', good tag. Spoke with David Alvarado with NMOCD-Artesia concerning holes in casing, gave approval to perf at 3720'. Drop below perfs by 50' and spot cement across area. Perforated at 3720'. Pumped a 33 sx Class "C" cement plug from 3787'-3489' estimated TOC.
1/14/22 - David Alvarado with NMOCD-Artesia and he was good with pumping another 33 sx cement. Pumped another 33 sx Class "C" cement from 3798'-3582', tagged. David Alvarado approved tag. Perforated at 3088'. Pumped a 25 sx Class "C" cement plug from 3159'-3016', tagged. David Alvarado approved tag.
1/18/22 - Squeezed in/out plug with 54 sx Class "C" cement from 1840'-1590', tagged. Perforated at 362'.
1/19/22 - Pumped 123 sx Class "C" cement from 362' and circulated up to surface on both 5-1/2" and 8-5/8" casing.
1/26/22 - Cut off wellhead and installed dry hole marker. Cut off anchors and cleaned location. **WELL IS PLUGGED AND ABANDONED.**

New Mexico DB State Com #1



Sec-TWN-RNG: 7-19S-24E				API: 30-015-23682					
FOOTAGES: 1980' FNL & 1980' FWL				GL: 3839					
Unit Letter F				KB:					
CASING DETAIL									
#	HOLE SIZE	SIZE	WGHT	GRADE	Top	Bottom	Sx Cmt	Circ/TOC	TOC by
A	17 1/2	13 3/8	54.5	K55	0	312	350	Circ	
B	12 1/4	8 5/8	32	K55	0	1,790	1010	Circ	
C	7 7/8	5 1/2	17, 15.5, & 14	K55	0	8,702	980	5300	CBL
FORMATION TOPS									
		FORMATION	TOP			Formation	TOP		
		Yeso	1660			Cisco	7035		
		Abo	3670			Canyon	7189		
		Wolfcamp	4788			Strawn	7647		
						Morrow	8104		
Tubing									
	2-7/8" tubing w/packer @ 6070'								
Perforation Detail									
Formation	Top	Bottom							
Morrow	8,273	8,281							
Wolfcamp	6152	6362							
PLUGS									
#	SX	Class	Top	Bottom	Tag	Notes			
1	4	H	8015	8052	N				
2	8	C	6940	7270	N				
3	25	C	5848	6100	Y	CIBP			
4	25	C	5199	5430	Y	Perforate			
5	25	C	4645	4904	Y	Perforate			
6	33	C	3489	3787	N	Perforate			
6	33	C	3582	3798	Y	Pumped another 33 sx for 2nd plug 6			
7	25	C	3016	3159	Y	Perforate			
8	54	C	1590	1840	Y				
9	123	C	0	362	Y	Perforate			

District I
1625 N. French Dr., Hobbs, NM 88240
Phone:(575) 393-6161 Fax:(575) 393-0720
District II
811 S. First St., Artesia, NM 88210
Phone:(575) 748-1283 Fax:(575) 748-9720
District III
1000 Rio Brazos Rd., Aztec, NM 87410
Phone:(505) 334-6178 Fax:(505) 334-6170
District IV
1220 S. St Francis Dr., Santa Fe, NM 87505
Phone:(505) 476-3470 Fax:(505) 476-3462

State of New Mexico
Energy, Minerals and Natural Resources
Oil Conservation Division
1220 S. St Francis Dr.
Santa Fe, NM 87505

CONDITIONS

Action 82292

CONDITIONS

Operator: EOG RESOURCES INC P.O. Box 2267 Midland, TX 79702	OGRID: 7377
	Action Number: 82292
	Action Type: [C-103] Sub. Plugging (C-103P)

CONDITIONS

Created By	Condition	Condition Date
gcordero	None	2/17/2022