

Well Name: JICARILLA APACHE C	Well Location: T24N / R5W / SEC 26 / SWSW / 36.277418 / -107.336005	County or Parish/State: RIO ARRIBA / NM
Well Number: 4	Type of Well: CONVENTIONAL GAS WELL	Allottee or Tribe Name: JICARILLA APACHE
Lease Number: JIC13	Unit or CA Name:	Unit or CA Number:
US Well Number: 3003926886	Well Status: Gas Well Shut In	Operator: DJR OPERATING LLC

Notice of Intent

Sundry ID: 2652415

Type of Submission: Notice of Intent	Type of Action: Plug and Abandonment
Date Sundry Submitted: 01/13/2022	Time Sundry Submitted: 09:39
Date proposed operation will begin: 01/13/2022	

Procedure Description: The subject well has a casing failure & is being submitted for engineering & geological review per Dave M. of the BLM prior to the onsite inspection. A Reclamation Plan will be submitted on a subsequent sundry at a later date. DJR Operating, LLC requests permission to Plug & Abandon the subject well according to the attached Procedure, Current & Proposed Wellbore Diagram.

Surface Disturbance

Is any additional surface disturbance proposed?: No

NOI Attachments

Procedure Description

- Jicarilla_Apache_C_4_PA_Procedure_20220113093932.pdf
- Jicarilla_Apache_C_4_BIA_Rationale_Form_20220113093932.pdf
- Jicarilla_Apache_C_4_Proposed_WBD_20220113093932.pdf
- Jicarilla_Apache_C_4_Current_WBD_20220113093932.pdf

Well Name: JICARILLA APACHE C	Well Location: T24N / R5W / SEC 26 / SWSW / 36.277418 / -107.336005	County or Parish/State: RIO ARRIBA / NM
Well Number: 4	Type of Well: CONVENTIONAL GAS WELL	Allottee or Tribe Name: JICARILLA APACHE
Lease Number: JIC13	Unit or CA Name:	Unit or CA Number:
US Well Number: 3003926886	Well Status: Gas Well Shut In	Operator: DJR OPERATING LLC

Conditions of Approval

Additional Reviews

General_Requirement_PxA_20220303151958.pdf
2652415_NOIA_C_4_3003926886_KR_03032022_20220303151935.pdf
24N05W26_Jicarilla_Apache_C_4_20220303151751.pdf

Operator Certification

I certify that the foregoing is true and correct. Title 18 U.S.C. Section 1001 and Title 43 U.S.C. Section 1212, make it a crime for any person knowingly and willfully to make to any department or agency of the United States any false, fictitious or fraudulent statements or representations as to any matter within its jurisdiction. Electronic submission of Sundry Notices through this system satisfies regulations requiring a submission of Form 3160-5 or a Sundry Notice.

Operator Electronic Signature: SHAW-MARIE FORD	Signed on: JAN 13, 2022 09:39 AM
Name: DJR OPERATING LLC	
Title: Regulatory Specialist	
Street Address: 1 Road 3263	
City: Aztec	State: NM
Phone: (505) 632-3476	
Email address: sford@djrlc.com	

Field Representative

Representative Name:		
Street Address:		
City:	State:	Zip:
Phone:		
Email address:		

BLM Point of Contact

BLM POC Name: KENNETH G RENNICK	BLM POC Title: Petroleum Engineer
BLM POC Phone: 5055647742	BLM POC Email Address: krennick@blm.gov
Disposition: Approved	Disposition Date: 03/03/2022
Signature: Kenneth Rennick	

Plug and Abandonment Procedure
for
DJR Operating, LLC
Jicarilla Apache C 4
API # 30-039-26886
SW/SW, Unit M, Sec. 26, T24N, R5W
Rio Arriba County, NM
Plunger Lift Well

I.

1. Hold Pre job meeting, comply with all NMOCD, BLM and environmental regulations.
2. MIRU prep rig.
3. Check and record tubing, casing and bradenhead pressures.
4. Trip and recover plunger.
5. Remove existing piping from casing valve, RU blow lines from casing valves and blow down casing pressure. Kill well as necessary. Ensure that well is dead or on a vacuum.
6. MIRU hot oil unit, pump hot water to clear tubing of paraffin.
7. Unset TAC.
8. ND WH, NU BOP, function test BOP.
9. Set tubing stop as necessary. Trip out of hole with 2 3/8" tubing. LD tubing to be sent in for storage/salvage.
10. RDMO prep rig to next location.

II.

11. MIRU P&A rig and equipment.
12. PU bit and scraper on workstring. Ensure tubing can go past 6650'. TOOH.

13. Plug 1: Dakota Perfs and top: RU cement equipment. TIH with 4-1/2" CR on workstring and set near 6650'. Pressure test tubing to 1000 psi. Sting out of CR and pressure test casing to 600 psi. Notify office if pressure test fails.
14. Sting back into CR. Establish rate. Attempt to squeeze below CR with 10 sx. Sting out of CR and spot sufficient cement on top of CR to bring TOC to 6550' on top of CR. Pump water to ensure tubing is clear.
15. Plug 2. Gallup top: Mix and pump a balanced cement plug from 5585-5485''. Pump water to ensure tubing is clear.
16. Plug 3: Mancos top: Mix and pump a balanced cement plug from 4830-4730''. Pump water to ensure tubing is clear.
17. Plug 4. Mesa Verde: Mix and pump a balanced cement plug from 3868-3768'. Pump water to ensure tubing is clear.
18. Plug 5: Chacra: Mix and pump a balanced cement plug from 3192-3092'. Pump water to ensure tubing is clear.
19. Plug 6. Pictured Cliffs, Fruitland, Kirtland, and Ojo Alamo: Mix and pump a balanced cement plug from 2352-1734'. Pump water to ensure tubing is clear.
20. Plug 7: Nacimiento: Mix and pump a balanced cement plug from 1186-1086'. Pump water to ensure that tubing is clear.
21. Plug 8: Surface casing shoe and surface: Mix and pump a balanced cement plug from 409' to surface across second surface casing shoe to surface. Pump water to ensure that tubing is clear. TOOH with workstring.
22. RD cementing equipment. Cut off wellhead, fill any exposed annulus with cement as necessary. **Install SURFACE P&A marker as per BIA requirements.** Record GPS coordinates for P&A marker and the Final P&A Report. Photograph the P&A marker and attach to the report.
23. RD and MO all rig and cement equipment. Assure that location is free of trash and contamination before moving off.
24. Send all reports and attachments to DJR Aztec office for regulatory filings.

Note: All cement is to be Class G mixed at 15.8 ppg, yield 1.15 cu ft / sx. Cement volumes are based on inside capacities + 50' excess and outside capacities + 100% excess. Surface PxA marker is to be installed at surface, 12"x18", and exposed at the reclaimed GL surface.

Current Wellbore Diagram
DJR Operating, LLC
Jicarilla Apache C 4
 API # 30-039-26886
 SW/SW, Unit M, Sec 26, T24N, R5W
 Rio Arriba County, NM

GL 6675'
 KB 6687'
 Spud Date 2/7/2002

SURF CSG

Hole size 12.25"
 Csg Size: 8.625"
 Wt: 24#
 Grade: J-55
 ID: 8.097"
 Depth 359'
 Csg cap ft³: 0.3576
 TOC: Cement to
 surface

FORMATION TOPS

Nacimiento	1136'
Ojo Alamo	1784'
Kirtland	1928'
Fruitland	2149'
Pictured Cliffs	2302'
Lewis	2410'
Chacra	3142'
Mesa Verde	3818'
Mancos	4780'
Gallup	5535'
Dakota	6604'

TOC at surface.
 120 bbls excess cement circulated to surface.

Prod Tubing Detail:

2-3/8": NC, 1 jt 2-3/8", SN, 201 jts. 2-3/8" at 6654'.

Rod Detail

Plunger lift well

PROD CSG

Hole size 6.25"
 Csg Size: 4.5"
 Wt: 10.5#
 Grade: J-55
 ID: 4.052"
 Depth 6992'
 Csg cap ft³: 0.0895
 Csg/Csg Ann ft³: 0.2471
 Csg/OH cap ft³: 0.1026

TOC: Stg 1 (Circ 30 bbls cmt to surface)

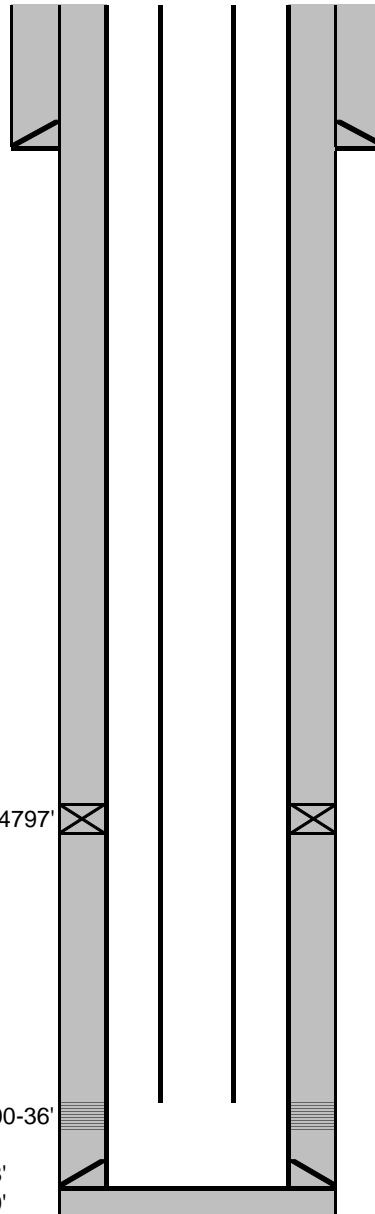
TOC: Stg 2 (Circ 120 bbls cmt to surface)

DV Tool at 4797'

TOC at DV tool.
 30 bbls excess cement circ. to surface.

Dakota Perfs 6700-36'

PBTD 6908'
 TD 7000'



Proposed P&A Wellbore Diagram

DJR Operating, LLC

Jicarilla Apache C 4

API # 30-039-26886

SW/SW, Unit M, Sec 26, T24N, R5W

Rio Arriba County, NM

GL 6675'
 KB 6687'
 Spud Date 2/7/2002

SURF CSG

Hole size 12.25"
 Csg Size: 8.625"
 Wt: 24#
 Grade: J-55
 ID: 8.097"
 Depth 359'
 Csg cap ft³: 0.3576
 TOC: Cement to surface

FORMATION TOPS

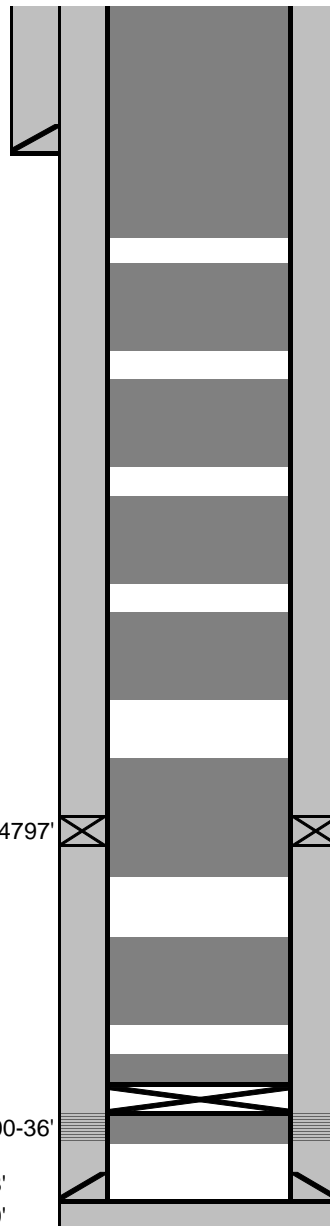
Nacimiento	1136'
Ojo Alamo	1784'
Kirtland	1928'
Fruitland	2149'
Pictured Cliffs	2302'
Lewis	2410'
Chacra	3142'
Mesa Verde	3818'
Mancos	4780'
Gallup	5535'
Dakota	6604'

PROD CSG

Hole size 6.25"
 Csg Size: 4.5"
 Wt: 10.5#
 Grade: J-55
 ID: 4.052"
 Depth 6992'
 Csg cap ft³: 0.0895
 Csg/Csg Ann ft³: 0.2471
 Csg/OH cap ft³: 0.1026

TOC: Stg 1 (Circ 30 bbls cmt to surface)
 TOC: Stg 2 (Circ 120 bbls cmt to surface)

Dakota Perfs 6700-36'
 PBTD 6908'
 TD 7000'



Plug 8: Surface casing shoe: Spot balanced plug from 409' to surface inside 4-1/2" casing.

Plug 7: Nacimiento: Spot balanced plug from 1186-1086'.

Plug 6: Pictured Cliffs, Fruitland, Ojo Alamo: Spot balanced plug from 2352-1734'.

Plug 5: Chacra: Spot balanced plug from 3192-3092'.

Plug 4: Mesaverde: Spot balanced plug from 3868-3768'.

Plug 3: Mancos: Spot balanced plug from 4830-4730'.

Plug 2: Gallup: Spot balanced plug from 5585-5485'.

Plug 1: Dakota top and perfs: Set CR at 6650'. Sqz below CR with 10 sx. Spot plug on top of CR from 6650'-6550'.

All plugs to be Class G cement mixed at 15.8 ppg and 1.15 ft³/sk

**UNITED STATES DEPARTMENT OF THE INTERIOR
BUREAU OF LAND MANAGEMENT
FARMINGTON DISTRICT OFFICE
6251 COLLEGE BLVD.
FARMINGTON, NEW MEXICO 87402**

AFMSS 2 Sundry ID 2652415

Attachment to notice of Intention to Abandon

Well: Jicarilla Apache C 4

CONDITIONS OF APPROVAL

1. Plugging operations authorized are subject to the attached "General Requirements for Permanent Abandonment of Wells on Federal and Indian Lease."
2. Farmington Office is to be notified at least 24 hours before the plugging operations commence at (505) 564-7750.

You are also required to place cement excesses per 4.2 and 4.4 of the attached General Requirements.

Office Hours: 7:45 a.m. to 4:30 p.m.

K. Rennick 3/3/2022

**GENERAL REQUIREMENTS FOR
PERMANENT ABANDONMENT OF WELLS ON FEDERAL AND INDIAN LEASES
FARMINGTON FIELD OFFICE**

1.0 The approved plugging plans may contain variances from the following minimum general requirements.

1.1 Modification of the approved plugging procedure is allowed only with the prior approval of the Authorized Officer, Farmington Field Office.

1.2 Requirements may be added to address specific well conditions.

2.0 Materials used must be accurately measured. (densometer/scales)

3.0 A tank or lined pit must be used for containment of any fluids from the wellbore during plugging operations and all pits are to be fenced with woven wire. These pits will be fenced on three sides and once the rig leaves location, the fourth side will be fenced.

3.1 Pits are not to be used for disposal of any hydrocarbons. If hydrocarbons are present in the pit, the fluids must be removed prior to filling in.

4.0 All cement plugs are to be placed through a work string. Cement may be bull-headed down the casing with prior approval. Cement caps on top of bridge plugs or cement retainers may be placed by dump bailer.

4.1 The cement shall be as specified in the approved plugging plan.

4.2 All cement plugs placed inside casing shall have sufficient volume to fill a minimum of 100' of the casing, or annular void(s) between casings, plus an excess volume sufficient to provide for 50 linear feet of fill above the plug.

4.3 Surface plugs may be no less than 50' in length.

4.4 All cement plugs placed to fill annular void(s) between casing and the formation shall be of sufficient volume to fill a minimum of 100' of the annular space plus 100% excess, calculated using the bit size, or 100' of annular capacity, determined from a caliper log, plus an excess volume sufficient to provide for 50 linear feet of fill above the plug.

4.5 All cement plugs placed to fill an open hole shall be of sufficient volume to fill a minimum of 100' of hole, as calculated from a caliper log, plus an excess volume sufficient to provide for 50 linear feet of fill above the plug. In the absence of a caliper log, an excess of 100% shall be required.

4.6 A cement bond log or other accepted cement evaluation tool is required to be run if one had not been previously ran or cement did not circulate to surface during the original casing cementing job or subsequent cementing jobs.

5.0 All cement plugs spotted across, or above, any exposed zone(s), when; the wellbore is not full of fluid or the fluid level will not remain static, and in the case of lost circulation or partial returns during cement placement, shall be tested by tagging with the work string.

- 5.1 The top of any cement plug verified by tagging must be at or above the depth specified in the approved plan, without regard to any excess.
- 5.2 Testing will not be required for any cement plug that is mechanically contained by use of a bridge plug and/or cement retainer, if casing integrity has been established.
- 5.3 Any cement plug which is the only isolating medium, for a fresh water interval or a zone containing a prospectively valuable deposit of minerals, shall be tested by tagging.
- 5.4 If perforations are required below the surface casing shoe, a 30 minute minimum wait time will be required to determine if gas and/or water flows are present. If flow is present, the well will be shut-in for a minimum of one hour and the pressure recorded. Short or long term venting may be necessary to evacuate trapped gas. **If only a water flow occurs with no associated gas, shut well in and record the pressures. Contact the Engineer as it may be necessary to change the cement weight and additives.**

6.0 Before setting any cement plugs the hole needs to be rolled. All wells are to be controlled by means of a fluid that is to be of a weight and consistency necessary to stabilize the wellbore. This fluid shall be left in place as filler between all plugs.

- 6.1 Drilling mud may be used as the wellbore fluid in open hole plugging operations.
- 6.2 The wellbore fluid used in cased holes shall be of sufficient weight to balance known pore pressures in all exposed formations.

7.0 A blowout preventer and related equipment (BOPE) shall be installed and tested prior to working in a wellbore with any exposed zone(s); (1) that are over pressured, (2) where the pressures are unknown, or (3) known to contain H₂S.

8.0 Within 30 days after plugging work is completed, file a Sundry Notice, Subsequent Report of Abandonment (Form 3160-5), five copies, with the Field Manager, Bureau of Land Management, 6251 College Blvd., Suite A, Farmington, NM 87402. The report should show the manner in which the plugging work was carried out, the extent, by depth(s), of cement plugs placed, and the size and location, by depth(s), of casing left in the well. Show date well was plugged.

9.0 All permanently abandoned wells are to be marked with a permanent monument as specified in 43 CFR 3162.6(d). Unless otherwise approved.

10.0 If this well is located in a Specially Designated Area (SDA), compliance with the appropriate seasonal closure requirements will be necessary.

All of the above are minimum requirements. Failure to comply with the above conditions of approval may result in an assessment for noncompliance and/or a Shut-in Order being issued pursuant to 43 CFR 3163.1. You are further advised that any instructions, orders or decisions issued by the Bureau of Land Management are subject to administrative review pursuant to 43 CFR 3165.3 and appeal pursuant to 43 CFR 3165.4 and 43 CFR 4.700.

BLM FLUID MINERALS P&A Geologic Report

Date Completed: 03/03/2022

Well No. Jicarilla Apache C #4 (API# 30-039-26886)		Location	885	FSL	&	1095	FWL
Lease No. JIC13		Sec. 26	T24N			R5W	
Operator DJR Operating, LLC		County	San Juan		State	New Mexico	
Total Depth 7000'	PBTD 6908'	Formation Dakota (Producing)					
Elevation (GL) 6675'		Elevation (KB) 6687'					

Geologic Formations	Est. Top	Est. Bottom	Log Top	Log Bottom	Remarks
San Jose Fm					Surface/freshwater sands
Nacimiento Fm			1136		Possible freshwater sands
Ojo Alamo Ss			1784		Aquifer (possible freshwater)
Kirtland Shale			1928		
Fruitland Fm			2149		Coal/Gas/Possible water
Pictured Cliffs Ss			2302		Gas
Lewis Shale			2410		
Chacra			3142		Gas
Cliff House Ss			3818		Water/Possible gas
Menefee Fm					Coal/Ss/Water/Possible O&G
Point Lookout Ss					Probable water/Possible O&G
Mancos Shale			4780		
Gallup			5535		O&G/Water
Greenhorn					
Graneros Shale					
Dakota Ss			6604		O&G/Water

Remarks:
P & A

Reference Well:

- Dakota perfs 6700' – 6736'.

Prepared by: Kenneth Rennick

District I
1625 N. French Dr., Hobbs, NM 88240
Phone:(575) 393-6161 Fax:(575) 393-0720
District II
811 S. First St., Artesia, NM 88210
Phone:(575) 748-1283 Fax:(575) 748-9720
District III
1000 Rio Brazos Rd., Aztec, NM 87410
Phone:(505) 334-6178 Fax:(505) 334-6170
District IV
1220 S. St Francis Dr., Santa Fe, NM 87505
Phone:(505) 476-3470 Fax:(505) 476-3462

State of New Mexico
Energy, Minerals and Natural Resources
Oil Conservation Division
1220 S. St Francis Dr.
Santa Fe, NM 87505

CONDITIONS

Action 87148

CONDITIONS

Operator: DJR OPERATING, LLC 1 Road 3263 Aztec, NM 87410	OGRID: 371838
	Action Number: 87148
	Action Type: [C-103] NOI Plug & Abandon (C-103F)

CONDITIONS

Created By	Condition	Condition Date
kpickford	Notify NMOCD 24 Hours Prior to beginning operations	3/9/2022
kpickford	Adhere to BLM approved plugs and COAs. See GEO Report	3/9/2022