

Office
District I - (575) 393-6161
1625 N. French Dr., Hobbs, NM 88240
District II - (575) 748-1283
811 S. First St., Artesia, NM 88210
District III - (505) 334-6178
1000 Rio Brazos Rd., Aztec, NM 87410
District IV - (505) 476-3460
1220 S. St. Francis Dr., Santa Fe, NM
87505

State of New Mexico
Energy, Minerals and Natural Resources

OIL CONSERVATION DIVISION
1220 South St. Francis Dr.
Santa Fe, NM 87505

Form C-105 Page 1 of 7
Revised July 18, 2013

WELL API NO. 30-025-26883

5. Indicate Type of Lease
STATE ☒ FEE ☐

6. State Oil & Gas Lease No.
25-26883

7. Lease Name or Unit Agreement Name
Eidson Brine Station, BW-004

8. Well Number 1

9. OGRID Number 130851

10. Pool name or Wildcat
Salado-Salt

SUNDRY NOTICES AND REPORTS ON WELLS

(DO NOT USE THIS FORM FOR PROPOSALS TO DRILL OR TO DEEPEN OR PLUG BACK TO A DIFFERENT RESERVOIR. USE "APPLICATION FOR PERMIT" (FORM C-101) FOR SUCH PROPOSALS.)

1. Type of Well: Oil Well ☐ Gas Well ☒ Other Brine Well

2. Name of Operator Wasserhund, Inc

3. Address of Operator P.O. Box 2140, Lovington, NM 88260

4. Well Location

Unit Letter M 567 feet from the **South** line and 161 feet from the **West** line

Section 31 Township 16S Range 35E NMPM County Lea

11. Elevation (Show whether DR, RKB, RT, GR, etc.)

12. Check Appropriate Box to Indicate Nature of Notice, Report or Other Data

NOTICE OF INTENTION TO:

PERFORM REMEDIAL WORK ☐ PLUG AND ABANDON ☐
TEMPORARILY ABANDON ☐ CHANGE PLANS ☐
PULL OR ALTER CASING ☐ MULTIPLE COMPL ☐
DOWNHOLE COMMINGLE ☐
CLOSED-LOOP SYSTEM ☐
OTHER: ☐

SUBSEQUENT REPORT OF:

REMEDIAL WORK ☒ ALTERING CASING ☐
COMMENCE DRILLING OPNS. ☐ P AND A ☐
CASING/CEMENT JOB ☐
OTHER: ☐

13. Describe proposed or completed operations. (Clearly state all pertinent details, and give pertinent dates, including estimated date of starting any proposed work). SEE RULE 19.15.7.14 NMAC. For Multiple Completions: Attach wellbore diagram of proposed completion or recompletion.

Well began to make low quality Brine- Found Tubing Leak, Pull Tubing, set packer tested casing-passed test witness by OCD, drilled out old tubing, and re-entered with tubing, put well back on making 10# Brine. See Attached for detail description of workover.

Spud Date: 3/4/2022

Rig Release Date: 3/10/2022

I hereby certify that the information above is true and complete to the best of my knowledge and belief.

SIGNATURE W P Price TITLE Consultant DATE March 19, 2022

Type or print name Wayne Price E-mail address: wayneprice@q.com PHONE: 505-715-2809

For State Use Only

APPROVED BY: Kerry Fortner TITLE Compliance Officer A DATE 3/28/22

Conditions of Approval (if any): 575-263-6633

Workover Report Wasserhund, Inc Eidson State #1

3/4/2022 Rig up and install BOP. Tubing was stuck. 1st stretch test showed stuck at 1975'. 2nd showed 1900'. Worked tubing until it came free. POOH laying down the tubing. 63 full joints. Last full joint was 2" American drill pipe. There was a 2' piece of the 64th joint on the end. 1992' of tubing recovered. Last two joints were bent. Brought in 80 joints of yellow band 2 3/8" J55 tubing. RIH with 4' perforated sub with a bull plug on the end. Tagged up at 2022'. Worked down to 2029' with tongs and could go no further. Laid down 2 joints and SION.

3/5/2022 POOH with tubing. Picked up bit sub and 3 3/4" bit. RIH and tagged up at 1926'. Picked up swivel and drilled down to 2034'. Could no get further. Tubing torquing up badly. POOH dragging. Laid down 2 joints of twisted tubing. Believe it wrapped around the parted tubing left in the hole. SION. Will perform and MIT on the casing before attempting to reach the salt cavity.

3/7/2022 RIH with AD-1 and set at 1865'. Would not hold. Obtained some old records and believe the 4 1/2" liner was set at 1881' in 2008. POOH to 1834' and set packer. Pressured up to 550# and ran chart. Witnessed by Kerry Fortner with the Hobbs OCD. Good chart. POOH with the packer. RIH with 2 3/8" collar with and X bar welded on the end and dressed with Kut Rite. RIH to 1834' and SION.

3/8/2022 RIH to 1897' and picked up swivel. Tagged up at 2027' with 5' in on joint 65 and began to drill down. Took 5 hrs to drill down joint 65 to 2054'. Picked up 66th joint and drilled until the end of the day. TD 2081'. POOH with 1 joint and SION.

3/9/2022 Continued to drill down. Reached 2435' with joint # 77. Tubing was torquing up and the pressure at the reverse pump was gaining. Believe reached the bottom of the brine cavity. Laid down 1 joint, laid down the swivel, removed the BOP and hung the tubing in the wellhead. EOT at 2402'. Tubing is free and no pressure when pumping down the tubing. This depth is 144' deeper than the previous tubing depth reported from the work over in 2008 (TWS field ticket). EOT reported at 2258' in 2008.

3/10/2022 Rigged down. Nipped up the wellhead and replace bad connections. Place the cage around the wellhead and connected the flowline to the battery. Started the triplex and began to pump down the tubing, charging up the cavity. Normal pump pressure down the tubing as per Mr. Gandy.

Workover Report Wasserhund, Inc Eidson State #1

3/4/2022 Rig up and install BOP. Tubing was stuck. 1st stretch test showed stuck at 1975'. 2nd showed 1900'. Worked tubing until it came free. POOH laying down the tubing. 63 full joints. Last full joint was 2" American drill pipe. There was a 2' piece of the 64th joint on the end. 1992' of tubing recovered. Last two joints were bent. Brought in 80 joints of yellow band 2 3/8" J55 tubing. RIH with 4' perforated sub with a bull plug on the end. Tagged up at 2022'. Worked down to 2029' with tongs and could go no further. Laid down 2 joints and SION.

3/5/2022 POOH with tubing. Picked up bit sub and 3 3/4" bit. RIH and tagged up at 1926'. Picked up swivel and drilled down to 2034'. Could no get further. Tubing torquing up badly. POOH dragging. Laid down 2 joints of twisted tubing. Believe it wrapped around the parted tubing left in the hole. SION. Will perform and MIT on the casing before attempting to reach the salt cavity.

3/7/2022 RIH with AD-1 and set at 1865'. Would not hold. Obtained some old records and believe the 4 1/2" liner was set at 1881' in 2008. POOH to 1834' and set packer. Pressured up to 550# and ran chart. Witnessed by Kerry Fortner with the Hobbs OCD. Good chart. POOH with the packer. RIH with 2 3/8" collar with and X bar welded on the end and dressed with Kut Rite. RIH to 1834' and SION.

3/8/2022 RIH to 1897' and picked up swivel. Tagged up at 2027' with 5' in on joint 65 and began to drill down. Took 5 hrs to drill down joint 65 to 2054'. Picked up 66th joint and drilled until the end of the day. TD 2081'. POOH with 1 joint and SION.

3/9/2022 Continued to drill down. Reached 2435' with joint # 77. Tubing was torquing up and the pressure at the reverse pump was gaining. Believe reached the bottom of the brine cavity. Laid down 1 joint, laid down the swivel, removed the BOP and hung the tubing in the wellhead. EOT at 2402'. Tubing is free and no pressure when pumping down the tubing. This depth is 144' deeper than the previous tubing depth reported from the work over in 2008 (TWS field ticket). EOT reported at 2258' in 2008.

3/10/2022 Rigged down. Nippled up the wellhead and replace bad connections. Place the cage around the wellhead and connected the flowline to the battery. Started the triplex and began to pump down the tubing, charging up the cavity. Normal pump pressure down the tubing as per Mr. Gandy.

District I
1625 N French Dr., Hobbs, NM 88240
Phone: (575) 393-6151 Fax: (575) 393-0720

State of New Mexico
Energy, Minerals and Natural Resources Department
Oil Conservation Division Hobbs District Office

BRADENHEAD TEST REPORT

Operator Name Wasserkund Inc		API Number 30-025-26883	
Property Name Eidson State		Well No. 001	

1. Surface Location									
UL - Lot M	Section 31	Township 16 S	Range 35 E	Feet from 567	N/S Line S	Feet From 162	E/W Line W	County Lea	

Well Status									
TA'D WELL NO		SHUT-IN YES		INJ NO		PRODUCER YES		DATE 3-7-22	

OBSERVED DATA

	(A) Surface	(B) Interm(1)	(C) Interm(2)	(D) Prod Casing	(E) Tubing
Pressure	NA	NA	NA	0	0
Flow Characteristics					NOT INS
Puff	Y / N	Y / N	Y / N	Y / 0	CO2
Steady Flow	Y / N	Y / N	Y / N	Y / 0	WTR
Surges	Y / N	Y / N	Y / N	Y / 0	GAS
Down to nothing	Y / N	Y / N	Y / N	0 / N	Type of Fluid
Gas or Oil	Y / N	Y / N	Y / N	Y / 0	Injected for
Water	Y / N	Y / N	Y / N	Y / 0	Waterflood if

Remarks - Please state for each string (A,B,C,D,E) pertinent information regarding bleed down or continuous build up if applies.

Brine well CSG MIT TEST

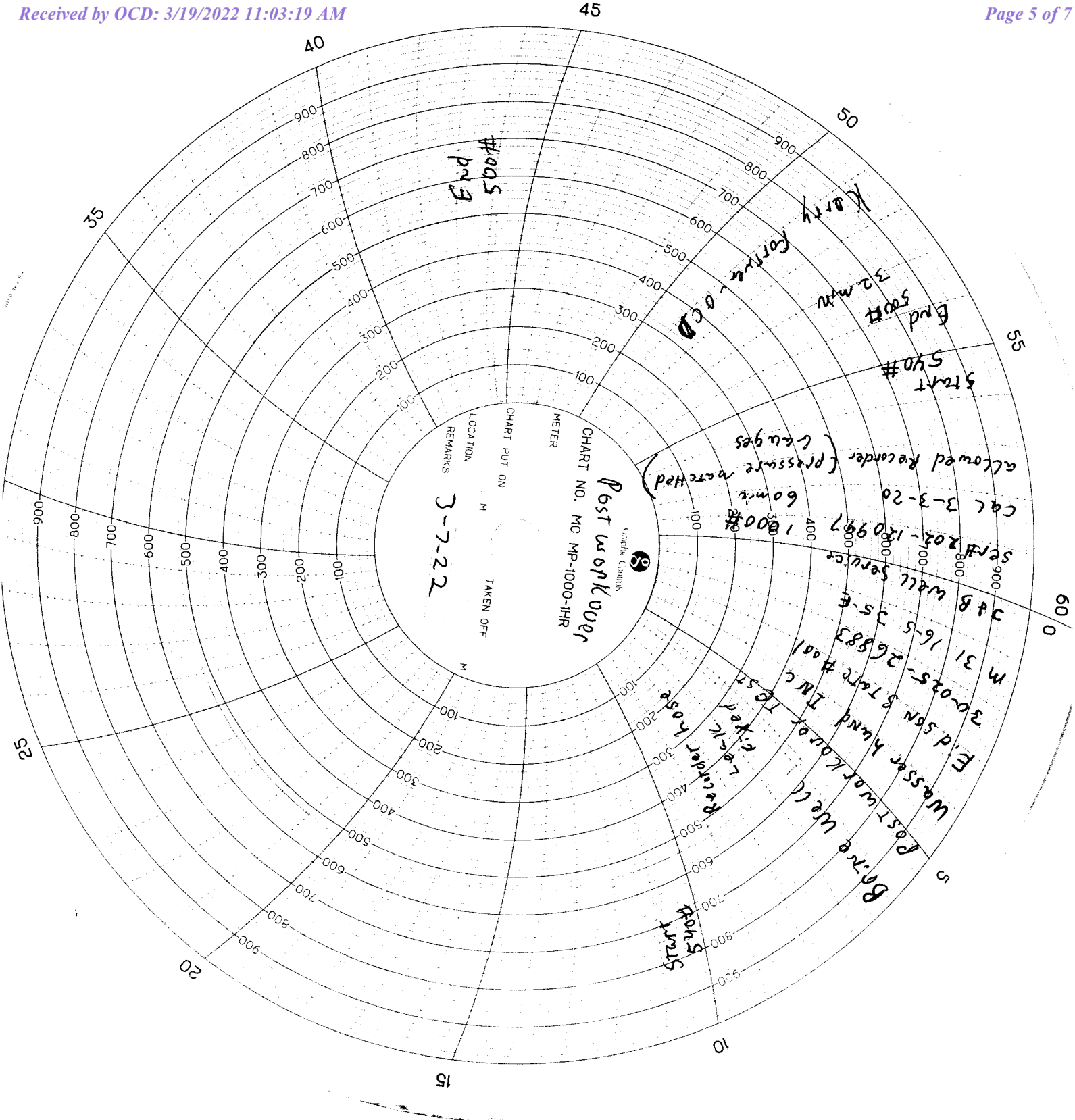
J & B Services

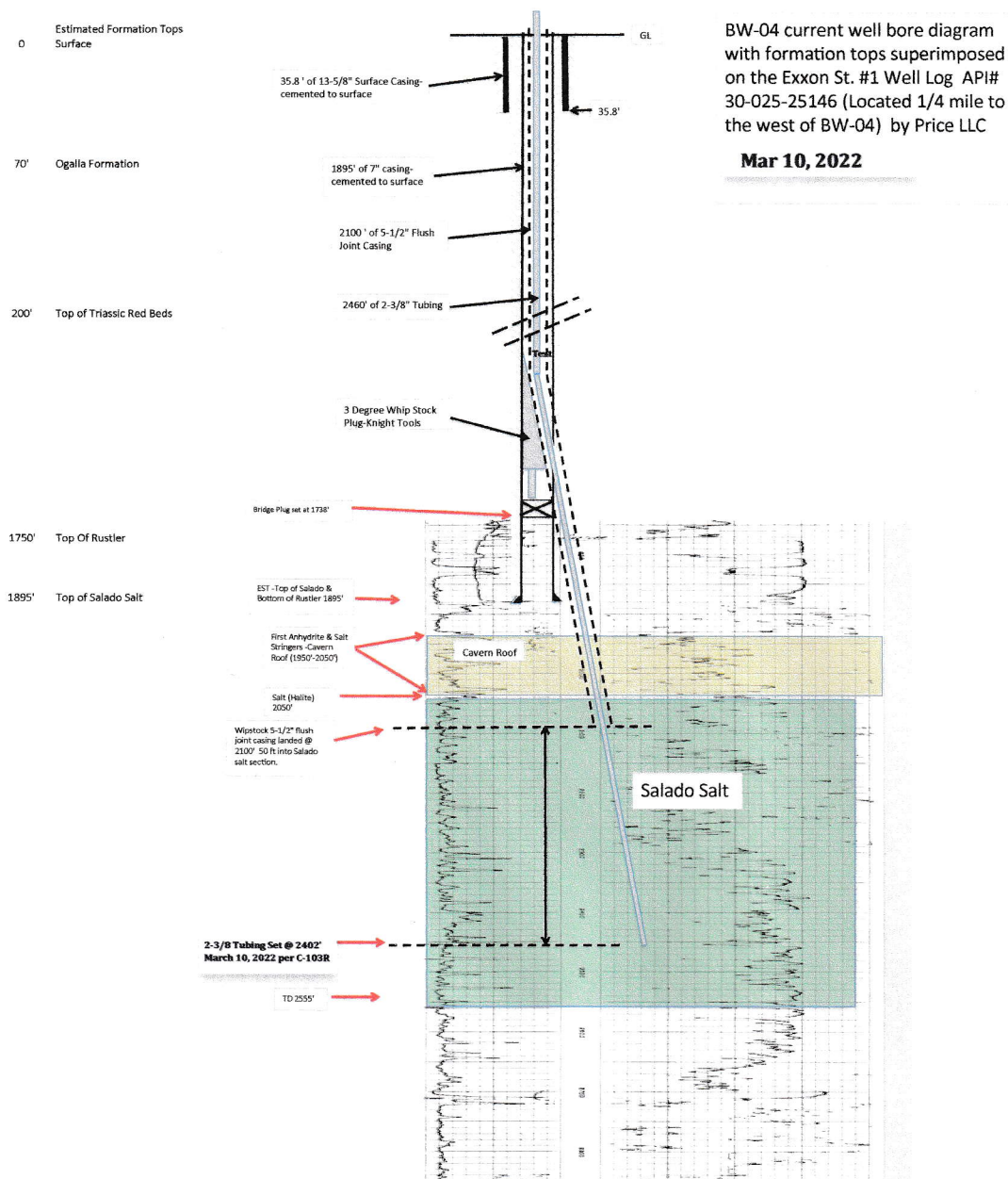
Ser # 202-120997

Cal 3-3-20 Allowed to use pressure stayed same as gauge

Signature:		OIL CONSERVATION DIVISION	
Printed name:		Entered into RBDMS	
Title:		Re-test XZ	
E-mail Address:			
Date:	Phone:		
Witness: Kerry Farmer - OCD			

INSTRUCTIONS ON BACK OF THIS FORM





District I
1625 N. French Dr., Hobbs, NM 88240
Phone:(575) 393-6161 Fax:(575) 393-0720

District II
811 S. First St., Artesia, NM 88210
Phone:(575) 748-1283 Fax:(575) 748-9720

District III
1000 Rio Brazos Rd., Aztec, NM 87410
Phone:(505) 334-6178 Fax:(505) 334-6170

District IV
1220 S. St Francis Dr., Santa Fe, NM 87505
Phone:(505) 476-3470 Fax:(505) 476-3462

State of New Mexico
Energy, Minerals and Natural Resources
Oil Conservation Division
1220 S. St Francis Dr.
Santa Fe, NM 87505

CONDITIONS

Action 91375

CONDITIONS

Operator: WASSERHUND INC P.O. Box 2140 Lovington, NM 88260	OGRID: 130851
	Action Number: 91375
	Action Type: [C-103] Sub. Workover (C-103R)

CONDITIONS

Created By	Condition	Condition Date
kfortner	None	3/28/2022