

**District I**  
1625 N. French Dr., Hobbs, NM 88240  
Phone: (575) 393-6161 Fax: (575) 393-0720

**District II**  
811 S. First St., Artesia, NM 88210  
Phone: (575) 748-1283 Fax: (575) 748-9720

**District III**  
1000 Rio Brazos Road, Aztec, NM 87410  
Phone: (505) 334-6178 Fax: (505) 334-6170

**District IV**  
1220 S. St. Francis Dr., Santa Fe, NM 87505  
Phone: (505) 476-3460 Fax: (505) 476-3462

## State of New Mexico

Form C-101  
Revised July 18, 2013

## Energy Minerals and Natural Resources

## Oil Conservation Division

☐ AMENDED REPORT

1220 South St. Francis Dr.

Santa Fe, NM 87505

## APPLICATION FOR PERMIT TO DRILL, RE-ENTER, DEEPEN, PLUGBACK, OR ADD A ZONE

<sup>1</sup> Operator Name and Address Mewbourne Oil Company PO Box 5270 Hobbs, NM 88241		<sup>2</sup> OGRID Number 14744
		<sup>3</sup> API Number <b>30-015-49429</b>
<sup>4</sup> Property Code <b>332734</b>	<sup>5</sup> Property Name Boomerang 6 Fee SWD	<sup>6</sup> Well No. 1

<sup>7</sup> Surface Location

UL - Lot	Section	Township	Range	Lot Idn	Feet from	N/S Line	Feet From	E/W Line	County
F	6	25S	28E	F	2650	N	2650	W	Eddy

<sup>8</sup> Proposed Bottom Hole Location

UL - Lot	Section	Township	Range	Lot Idn	Feet from	N/S Line	Feet From	E/W Line	County

<sup>9</sup> Pool Information

Pool Name SWD/Devonian	Pool Code 96101
---------------------------	--------------------

## Additional Well Information

<sup>11</sup> Work Type <b>Drill</b>	<sup>12</sup> Well Type SWD	<sup>13</sup> Cable/Rotary	<sup>14</sup> Lease Type <b>FEE</b>	<sup>15</sup> Ground Level Elevation 3060'
<sup>16</sup> Multiple	<sup>17</sup> Proposed Depth 14830'	<sup>18</sup> Formation Devonian	<sup>19</sup> Contractor TBA	<sup>20</sup> Spud Date ASAP
Depth to Ground water		Distance from nearest fresh water well		Distance to nearest surface water

☒ We will be using a closed-loop system in lieu of lined pits<sup>21</sup> Proposed Casing and Cement Program

Type	Hole Size	Casing Size	Casing Weight/ft	Setting Depth	Sacks of Cement	Estimated TOC
Surface	26	20	94	500'	790	0
INTER 1	17.5	13.375	54.5	1932'	0	0
INTER 1	17.5	13.375	61	2350'	1290	0
INTER 2	12.25	9.625	40	9140'	1730	0
Liner	8.75	7.625	39	13950'	470	8940
Open Hole	6.5	-	-	14830'	-	-

## Casing/Cement Program: Additional Comments

<sup>22</sup> Proposed Blowout Prevention Program

Type	Working Pressure	Test Pressure	Manufacturer
Annular & Double Ram	3000	1500	Schaffer

<sup>23</sup> I hereby certify that the information given above is true and complete to the best of my knowledge and belief.

**I further certify that I have complied with 19.15.14.9 (A)**

Printed name: Bradley Bishop

Title: Regulatory Manager

E-mail Address: bbishop@mewbourne.com

## OIL CONSERVATION DIVISION

Approved By:

Title: **Petroleum Specialist**

Approved Date: **4/8/2022**

Expiration Date: **4/8/2024**

Date: 04-01-2022	Phone: 575-393-5905	Conditions of Approval Attached
------------------	---------------------	---------------------------------

District I  
1625 N. French Dr., Hobbs, NM 88240  
Phone: (575) 393-6161 Fax: (575) 393-0720  
District II  
811 S. First St., Artesia, NM 88210  
Phone: (575) 748-1283 Fax: (575) 748-9720  
District III  
1000 Rio Brazos Road, Aztec, NM 87410  
Phone: (505) 334-6178 Fax: (505) 334-6170  
District IV  
1220 S. St. Francis Dr., Santa Fe, NM 87505  
Phone: (505) 476-3460 Fax: (505) 476-3462

State of New Mexico  
Energy, Minerals & Natural Resources Department  
OIL CONSERVATION DIVISION  
1220 South St. Francis Dr.  
Santa Fe, NM 87505

Form C-102  
Revised August 1, 2011  
Submit one copy to appropriate  
District Office

☐ AMENDED REPORT

WELL LOCATION AND ACREAGE DEDICATION PLAT

<sup>1</sup> API Number <b>30-015-49429</b>		<sup>2</sup> Pool Code <b>96101</b>	<sup>3</sup> Pool Name <b>SWD; DEVONIAN</b>
<sup>4</sup> Property Code <b>332734</b>	<sup>5</sup> Property Name <b>BOOMERANG 6 FEE SWD</b>		<sup>6</sup> Well Number <b>1</b>
<sup>7</sup> OGRID NO. <b>14744</b>	<sup>8</sup> Operator Name <b>MEWBOURNE OIL COMPANY</b>		<sup>9</sup> Elevation <b>3060'</b>

<sup>10</sup> Surface Location

UL or lot no.	Section	Township	Range	Lot Idn	Feet from the	North/South line	Feet From the	East/West line	County
<b>F</b>	<b>6</b>	<b>25S</b>	<b>28E</b>		<b>2650</b>	<b>NORTH</b>	<b>2650</b>	<b>WEST</b>	<b>EDDY</b>

<sup>11</sup> Bottom Hole Location If Different From Surface

UL or lot no.	Section	Township	Range	Lot Idn	Feet from the	North/South line	Feet from the	East/West line	County
<sup>12</sup> Dedicated Acres	<sup>13</sup> Joint or Infill	<sup>14</sup> Consolidation Code	<sup>15</sup> Order No.						

No allowable will be assigned to this completion until all interest have been consolidated or a non-standard unit has been approved by the division.

<p>③</p> <p>N 00°06'55" W 2658.98'</p> <p>①</p> <p>LOT 4</p> <p>LOT 3</p> <p>LOT 2</p> <p>LOT 1</p> <p>LOT 5</p> <p>LOT 6</p> <p>LOT 7</p> <p>②</p> <p>N 00°08'10" W 2657.91'</p> <p>④</p> <p>N 89°36'53" W 2656.28'</p>	<p>N 89°55'15" W 5355.38'</p> <p>2650'</p> <p>S.L. 6</p> <p>GEODETIC DATA NAD 83 GRID - NM EAST</p> <p>SURFACE LOCATION N: 421732.7 - E: 605201.6 LAT: 32.1592532° N LONG: 104.1269550° W</p> <p>CORNER DATA NAD 83 GRID - NM EAST</p> <p>A: FOUND BRASS CAP "1940" N: 419070.0 - E: 602558.5</p> <p>B: FOUND BRASS CAP "1940" N: 421727.4 - E: 602552.2</p> <p>C: FOUND BRASS CAP "1940" N: 424385.7 - E: 602546.9</p> <p>D: FOUND BRASS CAP "1940" N: 424378.3 - E: 607901.1</p> <p>E: FOUND BRASS CAP "1940" N: 421701.4 - E: 607874.5</p> <p>F: FOUND BRASS CAP "1940" N: 419036.1 - E: 607848.7</p> <p>G: FOUND BRASS CAP "1940" N: 419052.2 - E: 605214.2</p>	<p>⑤</p> <p>N 00°34'09" E 2677.69'</p> <p>⑥</p> <p>N 00°33'11" E 2666.04'</p>
	<p><sup>17</sup> OPERATOR CERTIFICATION</p> <p>I hereby certify that the information contained herein is true and complete to the best of my knowledge and belief, and that this organization either owns a working interest or unleased mineral interest in the land including the proposed bottom hole location or has a right to drill this well at this location pursuant to a contract with an owner of such a mineral or working interest, or to a voluntary pooling agreement or a compulsory pooling order heretofore entered by the division.</p> <p>Signature <u>Bradley C. Bishop</u> Date <u>3/16/22</u></p> <p>Printed Name <b>BRADLEY BISHOP</b></p> <p>E-mail Address <b>BBISHOP@MEWBOURNE.COM</b></p> <p><sup>18</sup> SURVEYOR CERTIFICATION</p> <p>I hereby certify that the well location shown on this plat was plotted from field notes of actual surveys made by me or under my supervision, and that the same is true and correct to the best of my belief.</p> <p><b>06-16-2021</b></p> <p>Date of Survey</p> <p>Signature and Seal of Professional Surveyor <u>Robert M. Howett</u></p> <p><b>19680</b></p> <p>Certificate Number</p>	

Job No.: LS21060602

District I  
1625 N. French Dr., Hobbs, NM 88240  
Phone: (575) 393-6161 Fax: (575) 393-0720  
District II  
811 S. First St., Artesia, NM 88210  
Phone: (575) 748-1283 Fax: (575) 748-9720  
District III  
1000 Rio Brazos Road, Aztec, NM 87410  
Phone: (505) 334-6178 Fax: (505) 334-6170  
District IV  
1220 S. St. Francis Dr., Santa Fe, NM 87505  
Phone: (505) 476-3460 Fax: (505) 476-3462

State of New Mexico  
Energy, Minerals & Natural Resources Department  
OIL CONSERVATION DIVISION  
1220 South St. Francis Dr.  
Santa Fe, NM 87505

Form C-102  
Revised August 1, 2011  
Submit one copy to appropriate  
District Office

☐ AMENDED REPORT

WELL LOCATION AND ACREAGE DEDICATION PLAT

<sup>1</sup> API Number		<sup>2</sup> Pool Code 96101		<sup>3</sup> Pool Name SWD; DEVONIAN	
<sup>4</sup> Property Code		<sup>5</sup> Property Name BOOMERANG 6 FEE SWD			<sup>6</sup> Well Number 1
<sup>7</sup> OGRID NO. 14744		<sup>8</sup> Operator Name MEWBOURNE OIL COMPANY			<sup>9</sup> Elevation 3060'

<sup>10</sup> Surface Location

UL or lot no. F	Section 6	Township 25S	Range 28E	Lot Idn	Feet from the 2650	North/South line NORTH	Feet From the 2650	East/West line WEST	County EDDY
--------------------	--------------	-----------------	--------------	---------	-----------------------	---------------------------	-----------------------	------------------------	----------------

<sup>11</sup> Bottom Hole Location If Different From Surface

UL or lot no.	Section	Township	Range	Lot Idn	Feet from the	North/South line	Feet from the	East/West line	County
<sup>12</sup> Dedicated Acres		<sup>13</sup> Joint or Infill		<sup>14</sup> Consolidation Code		<sup>15</sup> Order No.			

No allowable will be assigned to this completion until all interest have been consolidated or a non-standard unit has been approved by the division.

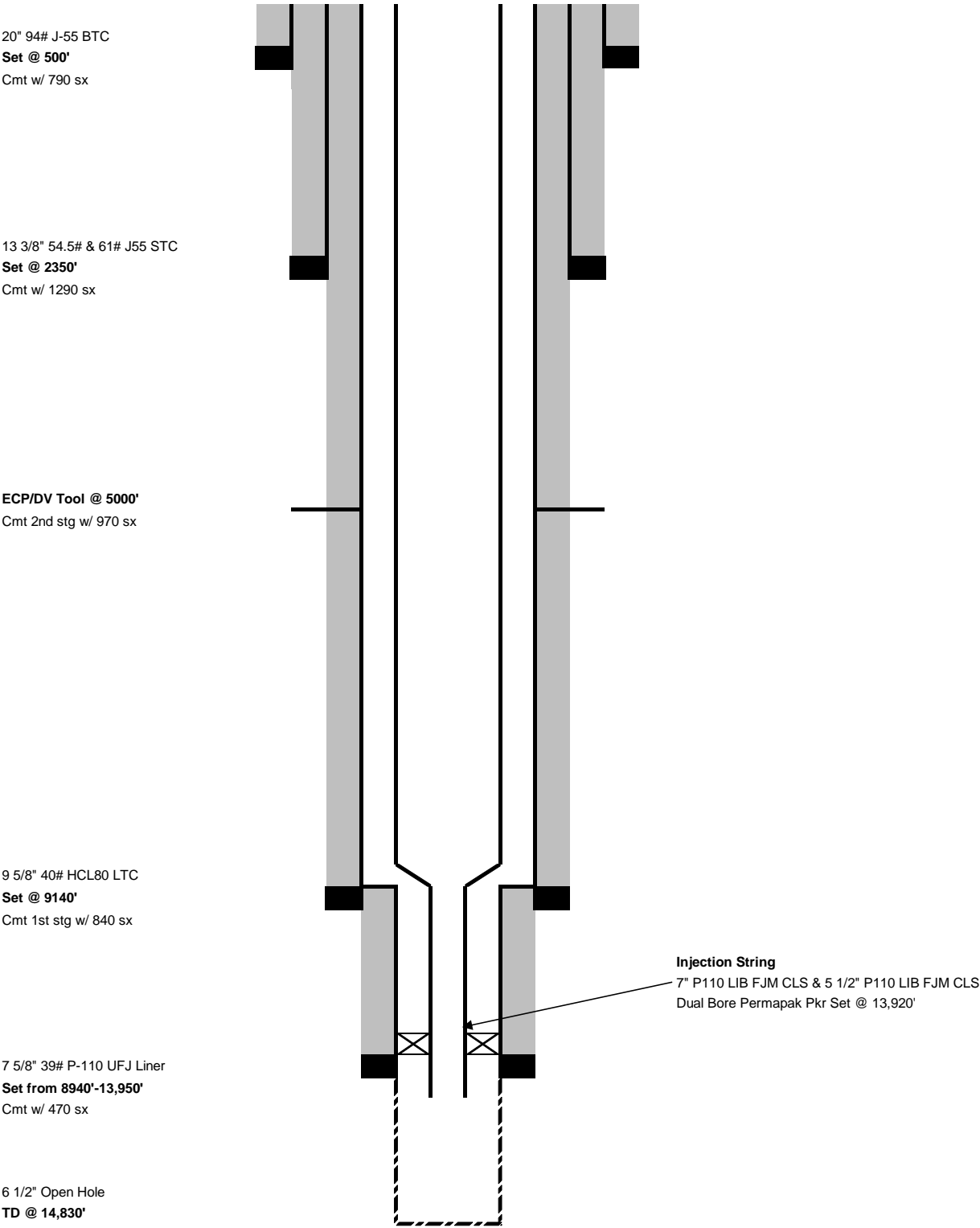
<p>N 89°55'15" W 5355.38'</p> <p>LOT 4 LOT 3 LOT 2 LOT 1</p> <p>LOT 5</p> <p>LOT 6</p> <p>LOT 7</p> <p>N 89°36'53" W 2656.28'</p>		<p>N 89°55'15" W 5355.38'</p> <p>2650'</p> <p>S.L. 6</p> <p>GEODETIC DATA NAD 83 GRID - NM EAST</p> <p>SURFACE LOCATION N: 421732.7 - E: 605201.6 LAT: 32.1592532° N LONG: 104.1269550° W</p> <p>CORNER DATA NAD 83 GRID - NM EAST</p> <p>A: FOUND BRASS CAP "1940" N: 419070.0 - E: 602558.5</p> <p>B: FOUND BRASS CAP "1940" N: 421727.4 - E: 602552.2</p> <p>C: FOUND BRASS CAP "1940" N: 424385.7 - E: 602546.9</p> <p>D: FOUND BRASS CAP "1940" N: 424378.3 - E: 607901.1</p> <p>E: FOUND BRASS CAP "1940" N: 421701.4 - E: 607874.5</p> <p>F: FOUND BRASS CAP "1940" N: 419036.1 - E: 607848.7</p> <p>G: FOUND BRASS CAP "1940" N: 419052.2 - E: 605214.2</p> <p>N 89°38'58" W 2635.21'</p>	<p><sup>17</sup> OPERATOR CERTIFICATION</p> <p>I hereby certify that the information contained herein is true and complete to the best of my knowledge and belief, and that this organization either owns a working interest or unleased mineral interest in the land including the proposed bottom hole location or has a right to drill this well at this location pursuant to a contract with an owner of such a mineral or working interest, or to a voluntary pooling agreement or a compulsory pooling order heretofore entered by the division.</p> <p><i>Bradley A. Bishop</i> 3/16/22 Signature Date BRADLEY BISHOP Printed Name BBISHOP@MEWBOURNE.COM E-mail Address</p> <p><sup>18</sup> SURVEYOR CERTIFICATION</p> <p>I hereby certify that the well location shown on this plat was plotted from field notes of actual surveys made by me or under my supervision, and that the same is true and correct to the best of my belief.</p> <p>06-16-2021 Date of Survey</p> <p>Signature and Seal of Professional Surveyor</p> <p>19680 Certificate Number</p>
---	--	---	---

Mewbourne Oil Company

Well Name: Boomerang 6 Fee SWD #1

Last Updated by L.T. Stallings 3/14/2022

Spud: 2022





Hydrogen Sulfide Drilling Operations Plan  
**Mewbourne Oil Company**

**1. General Requirements**

Rule 118 does not apply to this well because MOC has researched this area and no high concentrations of H<sub>2</sub>S were found. MOC will have on location and working all H<sub>2</sub>S safety equipment before the Delaware formation for purposes of safety and insurance requirements.

**2. Hydrogen Sulfide Training**

All personnel, whether regularly assigned, contracted, or employed on an unscheduled basis, will have received training from a qualified instructor in the following areas prior to entering the drilling pad area of the well:

1. The hazards and characteristics of hydrogen sulfide gas.
2. The proper use of personal protective equipment and life support systems.
3. The proper use of hydrogen sulfide detectors, alarms, warning systems, briefing areas, evacuation procedures.
4. The proper techniques for first aid and rescue operations.

Additionally, supervisory personnel will be trained in the following areas:

- 1 The effects of hydrogen sulfide on metal components. If high tensile tubular systems are utilized, supervisory personnel will be trained in their special maintenance requirements.
- 2 Corrective action and shut in procedures, blowout prevention, and well control procedures while drilling a well.
- 3 The contents of the Hydrogen Sulfide Drilling Operations Plan.

There will be an initial training session prior to encountering a known hydrogen sulfide source. The initial training session shall include a review of the site specific Hydrogen Sulfide Drilling Operations Plan.

**3. Hydrogen Sulfide Safety Equipment and Systems**

All hydrogen sulfide safety equipment and systems will be installed, tested, and operational prior to drilling below the 9 5/8" intermediate casing.

1. Well Control Equipment
  - A. Choke manifold with minimum of one adjustable choke/remote choke.
  - B. Blowout preventers equipped with blind rams and pipe rams to accommodate all pipe sizes with properly sized closing unit
  - C. Auxiliary equipment including annular type blowout preventer.
2. Protective Equipment for Essential Personnel

Thirty minute self contained work unit located in the dog house and at briefing areas.

Additionally: If H<sub>2</sub>S is encountered in concentrations less than 10 ppm, fans will be placed in work areas to prevent the accumulation of hazardous amounts of poisonous gas. If higher concentrations of H<sub>2</sub>S are detected the well will be shut in and a rotating head, mud/gas separator, remote choke and flare line with igniter will be installed.

3. Hydrogen Sulfide Protection and Monitoring Equipment

Two portable hydrogen sulfide monitors positioned on location for optimum coverage and detection. The units shall have audible sirens to notify personnel when hydrogen sulfide levels exceed 20 PPM.

4. Visual Warning Systems

A. Wind direction indicators as indicated on the wellsite diagram.

B. Caution signs shall be posted on roads providing access to location. Signs shall be painted a high visibility color with lettering of sufficient size to be readable at reasonable distances from potentially contaminated areas.

4. **Mud Program**

The mud program has been designed to minimize the amount of hydrogen sulfide entrained in the mud system. Proper mud weight, safe drilling practices, and the use of hydrogen sulfide scavengers will minimize hazards while drilling the well.

5. **Metallurgy**

All tubular systems, wellheads, blowout preventers, drilling spools, kill lines, choke manifolds, and valves shall be suitable for service in a hydrogen sulfide environment when chemically treated.

6. **Communications**

State & County Officials phone numbers are posted on rig floor and supervisors trailer. Communications in company vehicles and toolpushers are either two way radios or cellular phones.

7. **Well Testing**

Drill stem testing is not an anticipated requirement for evaluation of this well. If a drill stem test is required, it will be conducted with a minimum number of personnel in the immediate vicinity. The test will be conducted during daylight hours only.

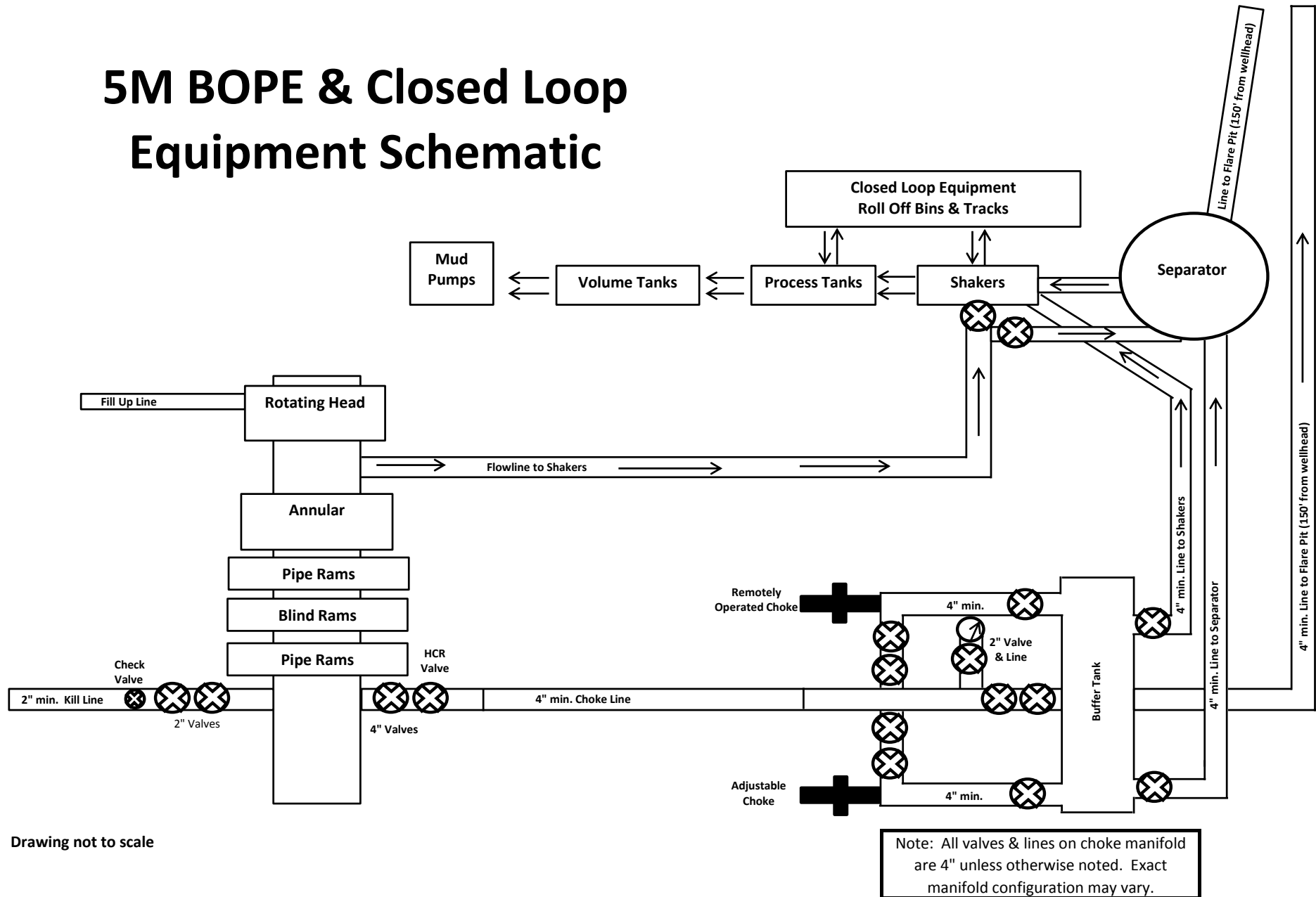
8. **Emergency Phone Numbers**

<b>Eddy County Sheriff's Office</b>	<b>911 or 575-887-7551</b>
<b>Ambulance Service</b>	<b>911 or 575-885-2111</b>
<b>Carlsbad Fire Dept</b>	<b>911 or 575-885-2111</b>
<b>Loco Hills Volunteer Fire Dept.</b>	<b>911 or 575-677-3266</b>
<b>Closest Medical Facility - Columbia Medical Center of Carlsbad</b>	<b>575-492-5000</b>

<b>Mewbourne Oil Company</b>	<b>Hobbs District Office</b>	<b>575-393-5905</b>
	<b>Fax</b>	<b>575-397-6252</b>
	<b>2<sup>nd</sup> Fax</b>	<b>575-393-7259</b>

<b>District Manager</b>	<b>Robin Terrell</b>	<b>575-390-4816</b>
<b>Drilling Superintendent</b>	<b>Frosty Lathan</b>	<b>575-390-4103</b>
	<b>Bradley Bishop</b>	<b>575-390-6838</b>
<b>Drilling Foreman</b>	<b>Wesley Noseff</b>	<b>575-441-0729</b>

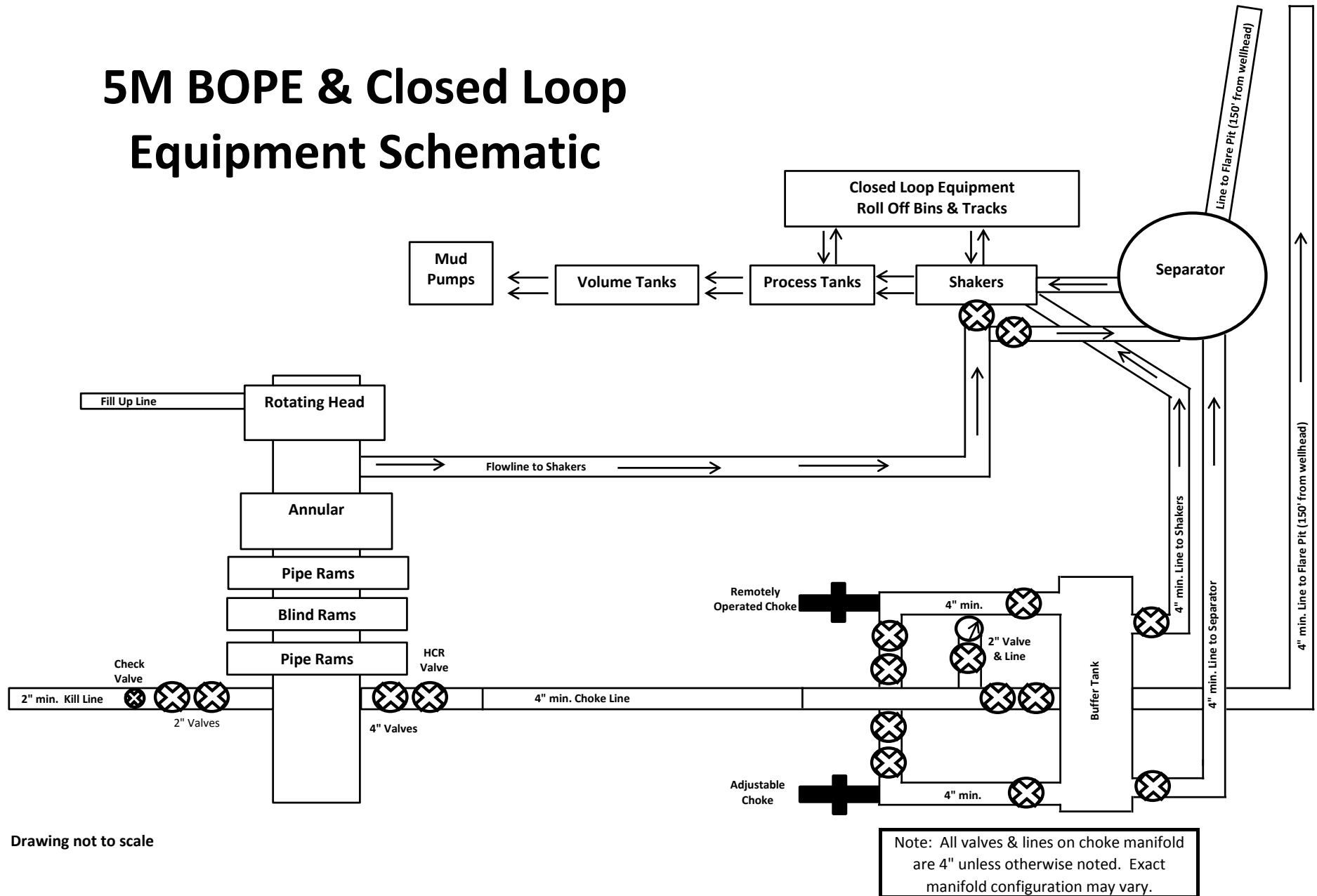
# 5M BOPE & Closed Loop Equipment Schematic



Drawing not to scale

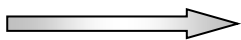
Anticipated Formation Tops:				
Formation	Est. Top		Formation	Est. Top
Rustler			Strawn	11515
Salt Top			Atoka	11750
Salt Base	900		Morrow	12300
Yates			Mississippian	13570
Seven Rivers			Woodford	13810
Queen			Devonian	13940
Capitan			Montoya	14880
Delaware	2415		Simpson	15240
Bone Spring	5975		Ellenburger	15500
Wolfcamp	9190			

# 5M BOPE & Closed Loop Equipment Schematic

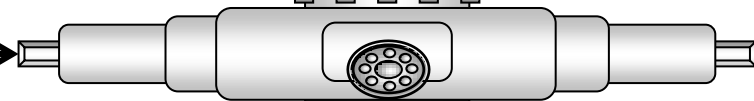
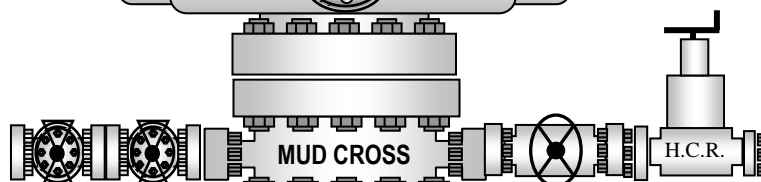
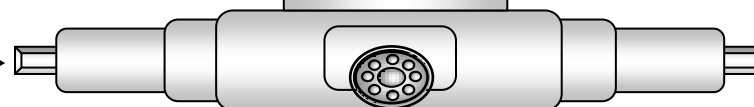
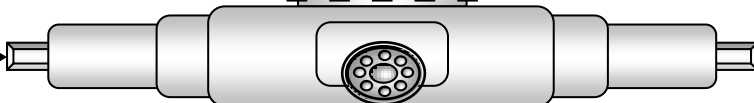
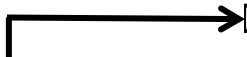


Drawing not to scale

Hydril "GK"  
13 5/8" 5M



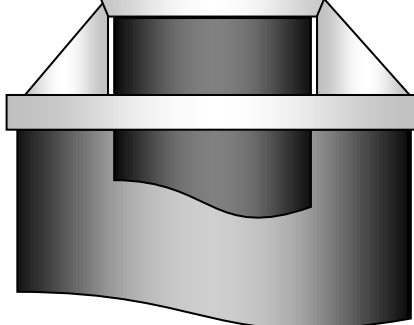
Cameron Type U  
13 5/8" 5M



13 5/8" 5M

13 5/8" 5M

13 5/8" 5M



**District I**

1625 N. French Dr., Hobbs, NM 88240  
 Phone:(575) 393-6161 Fax:(575) 393-0720

**District II**

811 S. First St., Artesia, NM 88210  
 Phone:(575) 748-1283 Fax:(575) 748-9720

**District III**

1000 Rio Brazos Rd., Aztec, NM 87410  
 Phone:(505) 334-6178 Fax:(505) 334-6170

**District IV**

1220 S. St Francis Dr., Santa Fe, NM 87505  
 Phone:(505) 476-3470 Fax:(505) 476-3462

**State of New Mexico**  
**Energy, Minerals and Natural Resources**  
**Oil Conservation Division**  
**1220 S. St Francis Dr.**  
**Santa Fe, NM 87505**

CONDITIONS

Action 90726

**CONDITIONS**

Operator: MEWBOURNE OIL CO P.O. Box 5270 Hobbs, NM 88241	OGRID: 14744
	Action Number: 90726
	Action Type: [C-101] Drilling Non-Federal/Indian (APD)

**CONDITIONS**

Created By	Condition	Condition Date
kpickford	Notify OCD 24 hours prior to casing & cement	4/8/2022
kpickford	Once the well is spud, to prevent ground water contamination through whole or partial conduits from the surface, the operator shall drill without interruption through the fresh water zone or zones and shall immediately set in cement the water protection string	4/8/2022
kpickford	Cement is required to circulate on both surface and intermediate1 strings of casing	4/8/2022
kpickford	Oil base muds are not to be used until fresh water zones are cased and cemented providing isolation from the oil or diesel. This includes synthetic oils. Oil based mud, drilling fluids and solids must be contained in a steel closed loop system	4/8/2022
kpickford	The Operator is to notify NMOCD by sundry (Form C-103) within ten (10) days of the well being spud	4/8/2022