

From: [Kuehling, Monica, EMNRD](#)
To: [Joseph Schnitzler](#); krennick@blm.gov
Cc: [Gina Doerner](#)
Subject: RE: [EXTERNAL] GCU 194 - Casing Repair Approval
Date: Tuesday, February 22, 2022 1:11:55 PM

Joey
30-045-06935

Approval is given from NMOCD to continue with the repair as long as approval is received from the BLM. Notify this office prior to MIT – an inspector from this office will need to witness. Please also submit a subsequent when work is completed.

Keep this office informed on when cementing will occur and when SIMCOE will be drilling out.

Monitor bradenhead during repair. The well has had pressure on its bradenhead in the past.

Thank you

Monica Kuehling
Compliance Officer Supervisor
Deputy Oil and Gas Inspector
New Mexico Oil Conservation Division
North District
Office Phone: 505-334-6178 ext. 123
Cell Phone: 505-320-0243

From: Joseph Schnitzler <joseph.schnitzler@ikavenergy.com>
Sent: Tuesday, February 22, 2022 12:53 PM
To: krennick@blm.gov; Kuehling, Monica, EMNRD <monica.kuehling@state.nm.us>
Cc: Gina Doerner <gina.doerner@ikavenergy.com>
Subject: [EXTERNAL] GCU 194 - Casing Repair Approval

CAUTION: This email originated outside of our organization. Exercise caution prior to clicking on links or opening attachments.

Hi Kenny and Monica

We currently have a workover rig at the GCU 194 that was doing routine repair work, but it turned out that we found a hole in the production casing. Using a RBP and packer, we narrowed the hole down to 3514-3532', which is about 1500' above the top Mancos perforation. We are now requesting approval from the BLM and NMOCD to squeeze cement into that hole, drill out, and MIT

the casing to 560 psi. Once successful, we will then run our production tubing as well as the pump and rods. If possible, we can get a cement package out there tomorrow to begin the work. I've attached a wellbore diagram for your convenience. Please let me know if you have any questions and if you are okay with us moving forward with this work. Also, is it necessary to have either a BLM or NMOCD rep onsite while we are cementing and performing the MIT?

Joey Schnitzler – Production Engineer
IKAV Energy Inc.
Phone: (281) 743-7504
Email: joseph.schnitzler@ikavenergy.com



Confidentiality notice:

This e-mail communication (and any attachment/s) are confidential and are intended only for the individual(s) or entity named above and to others who have been specifically authorized to receive it. Any information in this email and attachments may be legally privileged. If you are not the intended recipient, any disclosure, copying, reading, distribution, or any action taken or omitted in reliance on it, is prohibited and may be unlawful. Any opinions or advice contained in this email are subject to confidentiality and any terms and conditions may be protected by an engagement letter or other agreement. Please notify the sender that you have received this e-mail in error by calling the phone number above or by e-mail, and delete the e-mail (including any attachment/s) subsequently. This information may be subject to professional confidentiality (e.g. auditors, tax, or legal advisors), other privilege, or may otherwise be protected by work product immunity or other legal rules. Thank you.

GALLEGOS CANYON UNIT #194

30-045-06935

D-5-27N-12W 850 FNL & 920 FWL

San Juan County, NM

Job Summary

2/16/22: Traveled to location. Pumped hot water down the casing. Backed off rod string and pulled rods.

2/17/22: NDWH, NUBOP. Tagged fill with tubing. Pulled tubing.

2/18/22: Ran casing scraper. Pumped paraffin solvent down the tubing.

2/21/22: Set RBP at 5134'. Pressure tested casing to 560 psi. Didn't hold pressure. RIH w/ packer and determined bad casing depth.

2/22/22: Determined bad casing depth was from 3482'-3545'. POOH w/ packer. Set second RBP at 4056'. Dumped sand on RBP.

2/23/22: Set packer at 3230'. Attempted to establish injection rate with no success. Perforated 3 holes with 120 deg phasing at 3523'. Pumped ½ bbl but well pressured up.

2/24/22: RIH w/ tubing to 3548'. Pumped 10 sks 15.8# Class G down tubing. Reversed out with 20 bbls. POH w/ tubing, RIH w/ packer and set at 3224'. Squeezed ½ bbl cement behind pipe at 1000 psi. Released packer, POOH.

2/25/22: RIH w/ drill bit, drill collars. Tagged TOC at 3465'. Drilled out from 3465'-3547'. Pressure tested casing to 560 psi, didn't hold pressure. POH w/ tubing.

2/28/22: RIH w/ tubing to 3545'. Spotted 14 sks ultra fine MC500 13.4# cement. Reversed out 20 bbl. Hesitated squeeze to 580 psi, estimated ¼ bbl cement behind pipe. Left pressure on casing overnight.

3/1/22: Pressure tested casing to 580 psi, didn't hold. Tagged TOC at 3481'. POH, RIH w/ bit and drill collars. Drilled out from 3481'-3552'. POH.

3/2/22: RIH w/ tubing to 3563'. Spotted 26 sks ultra fine MC500 13.4# cement. POH to 3123', reversed out. Hesitated squeeze, estimated ½ bbl cement behind pipe. Left 600 psi on casing overnight.

3/3/22: POH, RIH w/ bit and drill collars. Drilled from 3427'-3580'. Pressure tested casing, didn't hold.

3/4/22: POH, RIH w/ tubing to 3627', spotted 20 sks 14.6# Type 3 cement. Reversed out, hesitated squeeze, estimated ¾ bbl cement behind pipe.

3/7/22: POH, RIH w/ bit and drill collars. Drilled from 3460'-3635'. Pressure tested casing, didn't hold pressure.

3/8/22: POH, RIH w/ packer. Determined there was a new leak from 3761'-3824'. POH w/ packer.

3/9/22: RIH w/ tubing open ended to 3838'. Spotted 12 sks 15.8# Class G Cement. Reserved out. Hesitated squeeze, estimated ½ bbl behind pipe.

3/10/22: POH w/ tubing. RIH w/ bit and drill collars, drilled out cement from 3761'-3838'. Pressure tested casing, held pressure.

3/11/22: Performed MIT w/ NMOCD, passed. Retrieved RBP at 4056'.

3/14/22: Retrieved RBP at 5134'. Ran production tubing.

3/15/22: NDBOP, NUWH. Run pump/rods. RDMO.

CHART NO. MC MP-1000-IHR

GRAPHIC CHARTS

TAKEN OFF

CHARTPUT ON

REMARKS

LOCATION

METER

DATE

WELL NAME

RIG NAME

WHAT IS BEING TESTED

LP START TIME AND PRESSURE

LP END TIME AND PRESSURE

LP FALL OFF IN 5 MINUTES

LP PASS OR FAIL

HP START TIME AND PRESSURE

HP END TIME AND PRESSURE

HP FALL OFF IN 5 MINUTES

HP PASS OR FAIL

TEST EQUIP CALIBRATION DATE

TEST COMPANY

TESTER NAME/SIGNATURE

RIP OP. NAME/SIGNATURE

WSL NAME/SIGNATURE

COMMENTS:

3-11-22

GCU 194

AWS 840

MIT

10:05 a.m.

10:35 a.m.

560psi

520psi

-40

Pass

1-7-22

HIGH TECH RENTAL TOOLS

Troy Romero

T. Romero

Ally

22-11-22
passed
Ally
Ally

12' KB
GL: 5603'

GCU 194
MA/DK
API # 30-045-06935
Unit D - Sec. 05 - T27N - R12W
San Juan, NM

Formation Tops

Pictured Cliffs	1147
Lewis	1336
Mesa Verde	2945
Mancos	3945
Gallup	4780
Base Gallup	5155
Greenhorn	5623
Graneros	5690
Graneros-Dakota	5745
Dakota	5793

Deviation Survey

Depth	Inclination
364	0.50
764	0.50
1560	0.75
1843	1.00
1986	0.75
2400	1.00
2502	1.00
2980	0.75
3380	0.75
3746	1.50
4218	1.25
4740	1.25
5186	0.75
5910	0.50

Mancos Perforations

5150' - 5162'

Frac'd w/ 70% N2 foam & 93k# sand

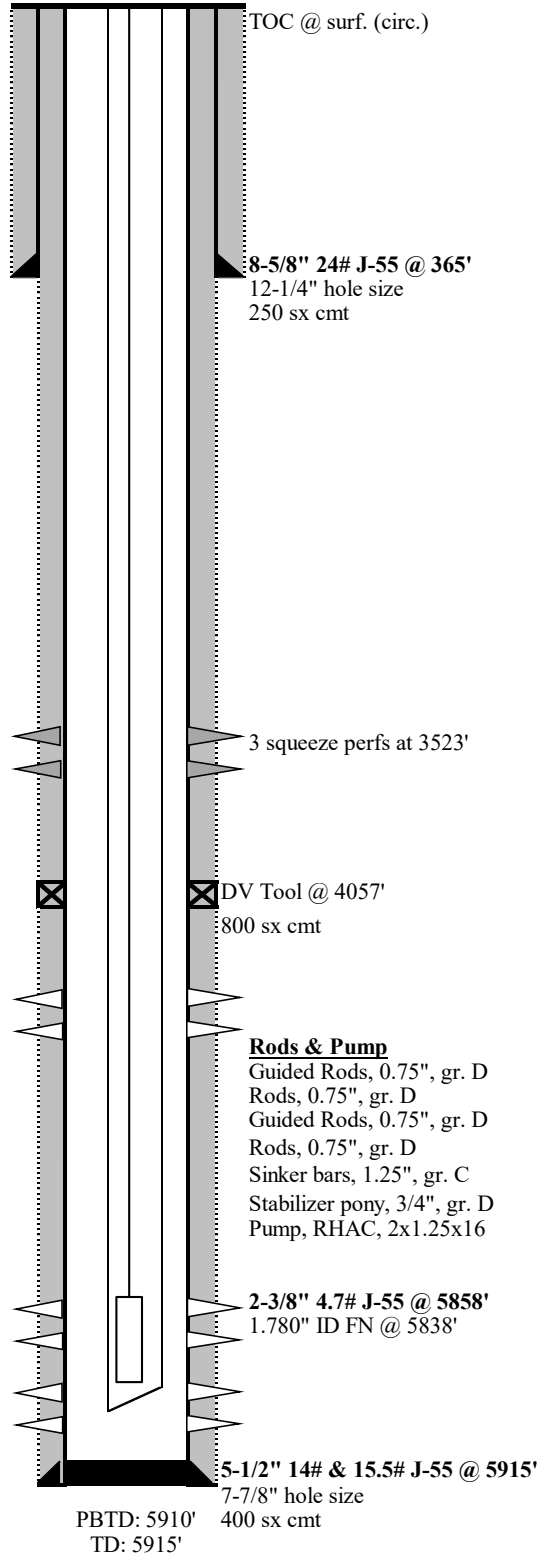
Dakota Perforations

5750' - 5767' 4 spf

Frac'd w/ 34k gal wtr, 25k# 20/40, 5k# 10/20

5798' - 5822' 3 spf

Frac'd w/ 42k gal wtr, 40k# 20/40, 10k# 10/20

**Length**

Guided Rods, 0.75", gr. D	25
Rods, 0.75", gr. D	3468
Guided Rods, 0.75", gr. D	600
Rods, 0.75", gr. D	1550
Sinker bars, 1.25", gr. C	150
Stabilizer pony, 3/4", gr. D	4
Pump, RHAC, 2x1.25x16	16

2-3/8" 4.7# J-55 @ 5858'
1.780" ID FN @ 5838'

5-1/2" 14# & 15.5# J-55 @ 5915'
7-7/8" hole size
400 sx cmt

PBTD: 5910'
TD: 5915'

Updated: 2/3/2022 JS

District I
1625 N. French Dr., Hobbs, NM 88240
Phone:(575) 393-6161 Fax:(575) 393-0720
District II
811 S. First St., Artesia, NM 88210
Phone:(575) 748-1283 Fax:(575) 748-9720
District III
1000 Rio Brazos Rd., Aztec, NM 87410
Phone:(505) 334-6178 Fax:(505) 334-6170
District IV
1220 S. St Francis Dr., Santa Fe, NM 87505
Phone:(505) 476-3470 Fax:(505) 476-3462

State of New Mexico
Energy, Minerals and Natural Resources
Oil Conservation Division
1220 S. St Francis Dr.
Santa Fe, NM 87505

CONDITIONS

Action 91770

CONDITIONS

Operator: SIMCOE LLC 1199 Main Ave., Suite 101 Durango, CO 81301	OGRID: 329736
	Action Number: 91770
	Action Type: [C-103] Sub. Workover (C-103R)

CONDITIONS

Created By	Condition	Condition Date
mkuehling	None	4/8/2022