

State of New Mexico  
Energy, Minerals and Natural ResourcesForm **PC-403f 15**  
Revised July 18, 2013

District I - (575) 393-6161  
1625 N. French Dr., Hobbs, NM 88240  
District II - (575) 748-1283  
811 S. First St., Artesia, NM 88210  
District III - (505) 334-6178  
1000 Rio Brazos Rd., Aztec, NM 87410  
District IV - (505) 476-3460  
1220 S. St. Francis Dr., Santa Fe, NM  
87505

OIL CONSERVATION DIVISION  
1220 South St. Francis Dr.  
Santa Fe, NM 87505

WELL API NO. 30-005-62232
5. Indicate Type of Lease STATE <input type="checkbox"/> FEE <input checked="" type="checkbox"/>
6. State Oil & Gas Lease No.
7. Lease Name or Unit Agreement Name Mary K
8. Well Number #001
9. OGRID Number 017470
10. Pool name or Wildcat 82370 Pecos Slope; ABO (gas)
11. Elevation (Show whether DR, RKB, RT, GR, etc.) GR3515

**SUNDRY NOTICES AND REPORTS ON WELLS**  
(DO NOT USE THIS FORM FOR PROPOSALS TO DRILL OR TO DEEPEN OR PLUG BACK TO A DIFFERENT RESERVOIR. USE "APPLICATION FOR PERMIT" (FORM C-101) FOR SUCH PROPOSALS.)

1. Type of Well: Oil Well <input type="checkbox"/> Gas Well <input checked="" type="checkbox"/> Other
2. Name of Operator Warren E&P, Inc.
3. Address of Operator Two Lincoln Centre, 5420 LBL Freeway Suite 600, Dallas TX 75240
4. Well Location Unit Letter <u>D</u> : <u>660</u> feet from the <u>North</u> line and <u>775</u> feet from the <u>West</u> line Section <u>29</u> Township <u>10S</u> Range <u>25E</u> NMPM County
11. Elevation (Show whether DR, RKB, RT, GR, etc.) GR3515

## 12. Check Appropriate Box to Indicate Nature of Notice, Report or Other Data

## NOTICE OF INTENTION TO:

PERFORM REMEDIAL WORK ☐ PLUG AND ABANDON ☐  
TEMPORARILY ABANDON ☐ CHANGE PLANS ☐  
PULL OR ALTER CASING ☐ MULTIPLE COMPL ☐  
DOWNHOLE COMMINGLE ☐  
CLOSED-LOOP SYSTEM ☐  
OTHER: ☐

## SUBSEQUENT REPORT OF:

REMEDIAL WORK ☐ ALTERING CASING ☐  
COMMENCE DRILLING OPNS. ☐ P AND A ☒ PNR  
CASING/CEMENT JOB ☐  
OTHER: ☐

13. Describe proposed or completed operations. (Clearly state all pertinent details, and give pertinent dates, including estimated date of starting any proposed work). SEE RULE 19.15.7.14 NMAC. For Multiple Completions: Attach wellbore diagram of proposed completion or recompletion.

Warren Resources has successfully completed the plugged and abandoned process for the above well. Details follow.

- **3/30/2022** Made NMOCD P&A operations notifications at 9:00 AM MST.
- 3/31/2022 MOL and R/U P&A rig. Checked well pressures: Tubing: 800 psi, Casing: 1000 psi, Bradenhead: 0 psi. Bled down well. Attempted to bleed well off but well would not die. Well will be killed with fresh water 4/1/22. If fresh water is not successful in killing well weighted fluid will be used to kill well. Secured and shut-in well for the day.
- 4/1/2022 Checked well pressures: Tubing: 800 psi, Casing: 1000 psi, Bradenhead: 0 psi. Bled down well and killed with fresh water. N/D wellhead, N/U BOP and function tested. TOOH with production tubing. P/U casing scraper and round tripped above top perforation to a depth of 3,776'. L/D casing scraper. Secured and shut-in well for the day.
- 4/2/2022 Checked well pressures: Tubing: 0 psi, Casing: 0 psi, Bradenhead: 0 psi. Bled down well. P/U 4 1/2" CR, TIH and set at 3,495'. Stung out of CR. R/U cementing services. Circulated wellbore clean with 52 bbls of fresh water. Pumped plug #1 from 3,495'-3,127' to cover the Abo perforations and formation top. TOOH with tubing. WOC 4 hours. R/U wireline services. Ran CBL from top of plug #1 at approximately 3,127' to surface. CBL results were sent to NMOCD office for review. TIH and tagged plug #1 top at 3,120'. Pressure tested production casing to 800 psi in which it successfully held pressure. Spotted 9.5 ppg mud spacer from 3,120'-1,320'. L/D tubing up to next plug depth. R/U cementing services. Pumped plug #2 from 1,322'-962' to cover the Glorieta formation top. Spotted 9.5 ppg mud spacer from 962'-785'. L/D tubing up to next plug depth. R/U cementing services. Pumped plug #3 from 788'-surface to cover the intermediate casing shoe, San Andres formation top, and surface casing shoe. L/D remaining tubing to surface. N/D BOP, N/U wellhead. WOC overnight. Secured and shut-in well for the day.
- **4/3/2022** Checked well pressures: Tubing: N/A, Casing: 0 psi, Bradenhead: 0 psi. Bled down well. Dug-out wellhead. Performed wellhead cut-off. Ran weighted tally tape down 13-3/8" surface casing annulus and tagged cement 32' down. Ran weighted tally tape down 8-5/8" intermediate casing annulus and tagged cement 3' down. Cement was at surface in 4 1/2" production casing string. R/U cementing services. Topped-off all three casing strings with 12 sx of cement. Installed subsurface P&A marker per NMOCD regulations. Photographed the P&A marker in place and recorded its location via GPS coordinates. Back filled P&A marker. R/D and MOL.

The BEORE and AFTER wellbore diagrams have been attached. The P&A End Of Well Report also provides the process summary to include cement and specific footages, etc. Contact me should you have any concerns or questions.

Thank you,

Joy Kennedy  
Warren E&P Regulatory Consultant

Spud Date:

01/18/1985

Rig Release Date:

01/31/1985

I hereby certify that the information above is true and complete to the best of my knowledge and belief.

SIGNATURE

*Joy Kennedy*

TITLE *REGULATORY CONSULTANT*

DATE *5/15/2022*

Type or print name Joy Kennedy E-mail address: kennedyregulatoryconsulting@gmail.com PHONE: 307-680-6080

For State Use Only

APPROVED BY: Kerry Fortner TITLE Compliance Officer A DATE 6/14/22  
Conditions of Approval

The BEORE and AFTER wellbore diagrams have been attached. The P&A End Of Well Report also provides the process summary to include cement and specific footages, etc. Contact me should you have any concerns or questions.

Thank you,

Joy Kennedy  
Warren E&P Regulatory Consultant

Spud Date:

01/18/1985

Rig Release Date:

01/31/1985

I hereby certify that the information above is true and complete to the best of my knowledge and belief.

SIGNATURE

*Joy Kennedy*

TITLE REGULATORY CONSULTANT

DATE 5/15/2022

Type or print name Joy Kennedy E-mail address: kennedyregulatoryconsulting@gmail.com PHONE: 307-680-6080

For State Use Only

APPROVED BY: \_\_\_\_\_ TITLE \_\_\_\_\_ DATE \_\_\_\_\_

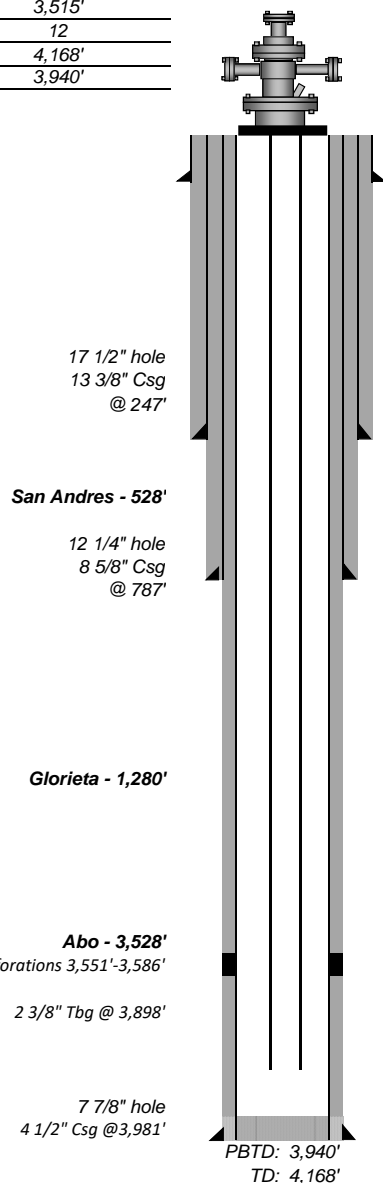
Conditions of Approval (if any): \_\_\_\_\_

## CURRENT WELLBORE DIAGRAM



OPERATOR: (17470) Warren E & P, Inc.  
 WELL NUMBER: Mary K #1 30-005-62232 MARY K #001 [18849]  
 API: 30-005-62232  
 ZONE: Pecos Slope Abo / Undesignated Abo  
 LOCATION: Chaves County - Spud 4:00 PM 1/18/1985  
 SEC: 29 TWP: 10S RNG: 25E

SUR FNL: 660'  
 SUR FWL: 775'  
 GROUND ELEVATION: 3,515'  
 KB ABOVE GRD: 12  
 TOTAL DEPTH: 4,168'  
 PBTD: 3,940'



RIG DETAIL	
TYPE:	Grande Drilling Corporation

SURFACE CASING DETAIL		DEPTH (FT)
TYPE:	6 jts 13 3/8" 61# casing	247'
CEMENT:	LEAD: 200 sx Class "C" with 2 CaCl	RETURNS: YES

INTERMEDIATE CASING DETAIL		DEPTH (FT)
TYPE:	19 jts 8 5/8" 24# J-55 casing	787'
CEMENT:	LEAD: 175 sx "C" with 2% CaCl2 TAIL: 200 sx lite "C" cement	RETURNS: YES

PRODUCTION CASING DETAIL		DEPTH (FT)
TYPE:	95 jts 4 1/2" 9.5# J-55 casing	3,981'
CEMENT:	LEAD: 300 SX 50/50 Poz	
CEMENT:	1" pipe to 1,350' cmt'd to surface w/300 sx Halliburton lite	RETURNS: YES

TUBING DETAIL			
No.	TYPE	LENGTH	DEPTH
0	Tubing Hanger	0.0	12
1	2-3/8" 6.5 #/ft J-55 Nipple	2.50	15
123	2-3/8" 4.75 #/ft J-55	31.57	3,898

NOTES: All depths from KB

---

## Wellbore Diagram

Mary K #1

API #: 30-005-62232

Chaves County, New Mexico

### Plug 3

788 feet - Surface

788 feet plug

82 sacks of Type III Cement

12 sacks of Type III Cement Top Off

### Plug 2

1322 feet - 962 feet

360 feet plug

25 sacks of Type III Cement

### Plug 1

3495 feet - 3120 feet

375 feet plug

25 sacks of Type III Cement

### Surface Casing

13.375" 61# @ 247 ft

### Formation

San Andres - 528 ft

Glorieta - 1280 ft

Abo - 3528 ft

### Intermediate Casing

8.625" 24# @ 787 ft

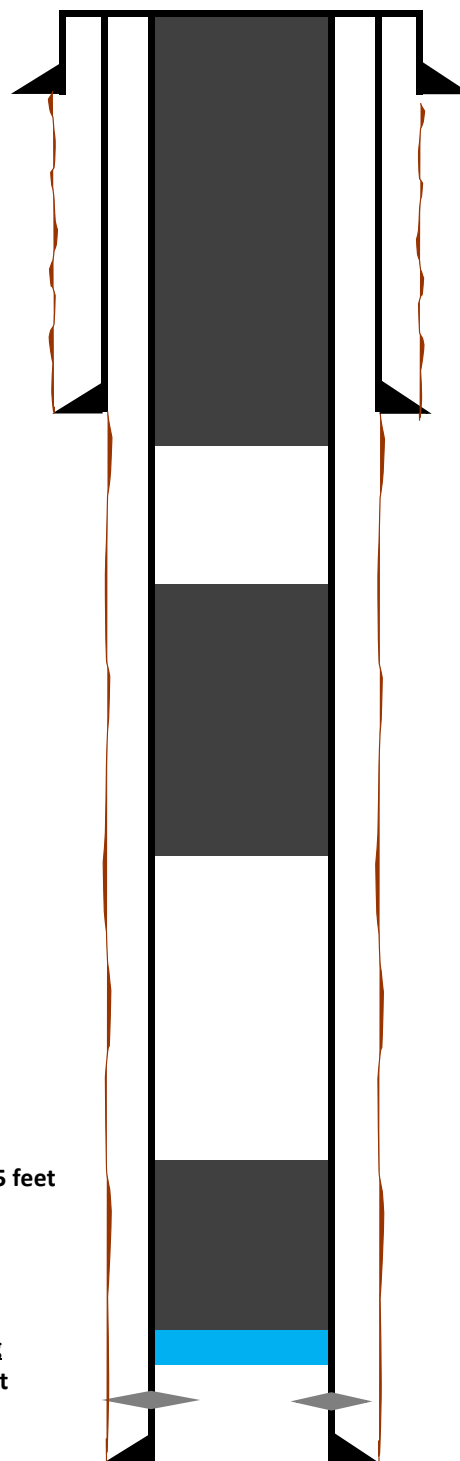
### Perforations

3551 ft - 3586 ft

Retainer @ 3495 feet

### Production Casing

4.5" 9.5# @ 3981 ft



## Warren Resources

### Plug And Abandonment End Of Well Report

**Mary K. #001**

660' FNL & 775' FWL, Section 29, T10S, R25E

Chaves County, NM / API 30-005-62232

#### Work Summary:

- 3/30/22** Made NMOCD P&A operations notifications at 9:00 AM MST.
- 3/31/22** MOL and R/U P&A rig. Checked well pressures: Tubing: 800 psi, Casing: 1000 psi, Bradenhead: 0 psi. Bled down well. Attempted to bleed well off but well would not die. Well will be killed with fresh water 4/1/22. If fresh water is not successful in killing well weighted fluid will be used to kill well. Secured and shut-in well for the day.
- 4/1/22** Checked well pressures: Tubing: 800 psi, Casing: 1000 psi, Bradenhead: 0 psi. Bled down well and killed with fresh water. N/D wellhead, N/U BOP and function tested. TOOH with production tubing. P/U casing scraper and round tripped above top perforation to a depth of 3,776'. L/D casing scraper. Secured and shut-in well for the day.
- 4/2/22** Checked well pressures: Tubing: 0 psi, Casing: 0 psi, Bradenhead: 0 psi. Bled down well. P/U 4 ½" CR, TIH and set at 3,495'. Stung out of CR. R/U cementing services. Circulated wellbore clean with 52 bbls of fresh water. Pumped plug #1 from 3,495'-3,127' to cover the Abo perforations and formation top. TOOH with tubing. WOC 4 hours. R/U wireline services. Ran CBL from top of plug #1 at approximately 3,127' to surface. CBL results were sent to NMOCD office for review. TIH and tagged plug #1 top at 3,120'. Pressure tested production casing to 800 psi in which it successfully held pressure. Spotted 9.5 ppg mud spacer from 3,120'-1,320'. L/D tubing up to next plug depth. R/U cementing services. Pumped plug #2 from 1,322'-962' to cover the Glorieta formation top. Spotted 9.5 ppg mud spacer from 962'-785'. L/D tubing up to next plug depth. R/U cementing services.

Pumped plug #3 from 788'-surface to cover the intermediate casing shoe, San Andres formation top, and surface casing shoe. L/D remaining tubing to surface. N/D BOP, N/U wellhead. WOC overnight. Secured and shut-in well for the day.

**4/3/22** Checked well pressures: Tubing: N/A, Casing: 0 psi, Bradenhead: 0 psi. Bled down well. Dug-out wellhead. Performed wellhead cut-off. Ran weighted tally tape down 13-3/8" surface casing annulus and tagged cement 32' down. Ran weighted tally tape down 8-5/8" intermediate casing annulus and tagged cement 3' down. Cement was at surface in 4 1/2" production casing string. R/U cementing services. Topped-off all three casing strings with 12 sx of cement. Installed subsurface P&A marker per NMOCD regulations. Photographed the P&A marker in place and recorded its location via GPS coordinates. Back filled P&A marker. R/D and MOL.

#### **Plug Summary:**

##### **Plug #1:(Abo Perforations and Formation Top 3,495'-3,120', 25 Sacks Type III Cement)**

Mixed 25 sx Type III cement and spotted a balanced plug to cover the Abo perforations and formation top.

##### **Plug #2:(Glorieta Formation Top 1,322'-962', 25 Sacks Type III Cement)**

Mixed 25 sx Type III cement and spotted a balanced plug to cover the Glorieta formation top.

##### **Plug #3: (Intermediate Casing Shoe, San Andres Formation Top, Surface Casing Shoe 788'-Surface, 82 Sacks Type III Cement(12 sx for top-off))**

Pumped plug #3 from 788'-surface to cover the intermediate casing shoe, San Andres formation top, and surface casing shoe. L/D remaining tubing to surface. N/D BOP, N/U wellhead. WOC overnight. Dug-out wellhead. Performed wellhead cut-off. Ran weighted tally tape down 13-3/8" surface casing annulus and tagged cement 32' down. Ran weighted tally tape down 8-5/8" intermediate casing annulus and tagged cement 3' down. Cement was at surface in 4 1/2" production casing string. R/U cementing services. Topped-off all three casing strings with 12 sx of cement. Installed subsurface P&A marker per NMOCD regulations. Photographed the P&A marker in place and recorded its location via GPS coordinates. Back filled P&A marker. R/D and MOL.



---

## Wellbore Diagram

Mary K. #1

API #: 30-005-62232

Chaves County, NM

### Plug 3

787 feet - Surface

787 feet plug

55 sacks of Type III Cement

### Plug 2

1330 feet - 1180 feet

150 feet plug

10 sacks of Type III Cement

### Plug 1

3501 feet - 3100 feet

401 feet plug

25 sacks of Type III Cement

### Perforations

3551 ft - 3586 ft

### Surface Casing

13.375" 61# @ 247 ft

### Intermediate Casing

8.625" 24# @ 787 ft

### Formation

San Andres - 528 ft

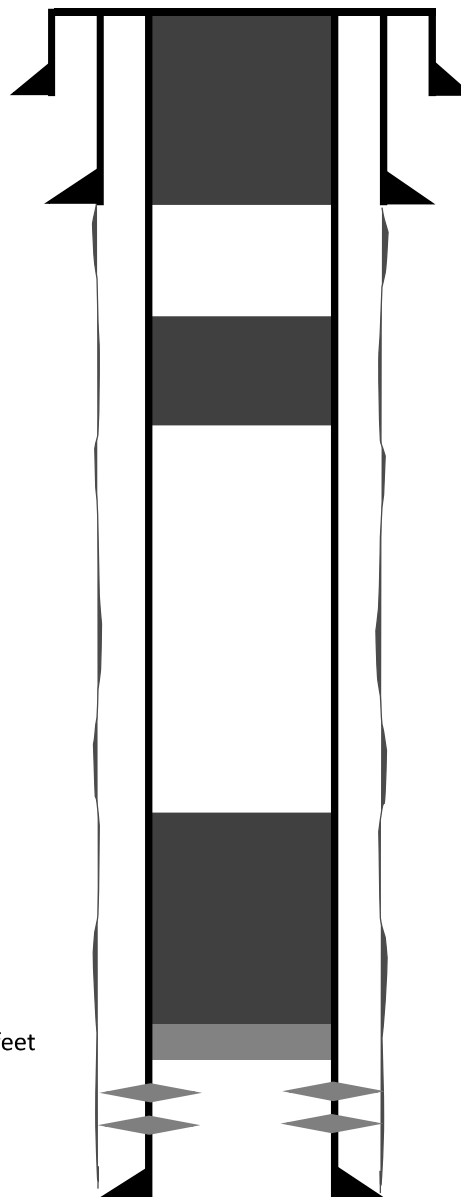
Glorieta - 1280 ft

Abo - 3528 ft

Retainer @ 3501 feet

### Production Casing

4.5" 9.5# @ 3981 ft





## Warren Resources

### Plug And Abandonment End Of Well Report

**Mary K. #001**

660' FNL & 775' FWL, Section 29, T10S, R25E

Chaves County, NM / API 30-005-62232

#### Work Summary:

- 3/30/22** Made NMOCD P&A operations notifications at 9:00 AM MST.
- 3/31/22** MOL and R/U P&A rig. Checked well pressures: Tubing: 800 psi, Casing: 1000 psi, Bradenhead: 0 psi. Bled down well. Attempted to bleed well off but well would not die. Well will be killed with fresh water 4/1/22. If fresh water is not successful in killing well weighted fluid will be used to kill well. Secured and shut-in well for the day.
- 4/1/22** Checked well pressures: Tubing: 800 psi, Casing: 1000 psi, Bradenhead: 0 psi. Bled down well and killed with fresh water. N/D wellhead, N/U BOP and function tested. TOOH with production tubing. P/U casing scraper and round tripped above top perforation to a depth of 3,776'. L/D casing scraper. Secured and shut-in well for the day.
- 4/2/22** Checked well pressures: Tubing: 0 psi, Casing: 0 psi, Bradenhead: 0 psi. Bled down well. P/U 4 ½" CR, TIH and set at 3,495'. Stung out of CR. R/U cementing services. Circulated wellbore clean with 52 bbls of fresh water. Pumped plug #1 from 3,495'-3,127' to cover the Abo perforations and formation top. TOOH with tubing. WOC 4 hours. R/U wireline services. Ran CBL from top of plug #1 at approximately 3,127' to surface. CBL results were sent to NMOCD office for review. TIH and tagged plug #1 top at 3,120'. Pressure tested production casing to 800 psi in which it successfully held pressure. Spotted 9.5 ppg mud spacer from 3,120'-1,320'. L/D tubing up to next plug depth. R/U cementing services. Pumped plug #2 from 1,322'-962' to cover the Glorieta formation top. Spotted 9.5 ppg mud spacer from 962'-785'. L/D tubing up to next plug depth. R/U cementing services.

Pumped plug #3 from 788'-surface to cover the intermediate casing shoe, San Andres formation top, and surface casing shoe. L/D remaining tubing to surface. N/D BOP, N/U wellhead. WOC overnight. Secured and shut-in well for the day.

**4/3/22** Checked well pressures: Tubing: N/A, Casing: 0 psi, Bradenhead: 0 psi. Bled down well. Dug-out wellhead. Performed wellhead cut-off. Ran weighted tally tape down 13-3/8" surface casing annulus and tagged cement 32' down. Ran weighted tally tape down 8-5/8" intermediate casing annulus and tagged cement 3' down. Cement was at surface in 4 1/2" production casing string. R/U cementing services. Topped-off all three casing strings with 12 sx of cement. Installed subsurface P&A marker per NMOCD regulations. Photographed the P&A marker in place and recorded its location via GPS coordinates. Back filled P&A marker. R/D and MOL.

#### **Plug Summary:**

##### **Plug #1:(Abo Perforations and Formation Top 3,495'-3,120', 25 Sacks Type III Cement)**

Mixed 25 sx Type III cement and spotted a balanced plug to cover the Abo perforations and formation top.

##### **Plug #2:(Glorieta Formation Top 1,322'-962', 25 Sacks Type III Cement)**

Mixed 25 sx Type III cement and spotted a balanced plug to cover the Glorieta formation top.

##### **Plug #3: (Intermediate Casing Shoe, San Andres Formation Top, Surface Casing Shoe 788'-Surface, 82 Sacks Type III Cement(12 sx for top-off))**

Pumped plug #3 from 788'-surface to cover the intermediate casing shoe, San Andres formation top, and surface casing shoe. L/D remaining tubing to surface. N/D BOP, N/U wellhead. WOC overnight. Dug-out wellhead. Performed wellhead cut-off. Ran weighted tally tape down 13-3/8" surface casing annulus and tagged cement 32' down. Ran weighted tally tape down 8-5/8" intermediate casing annulus and tagged cement 3' down. Cement was at surface in 4 1/2" production casing string. R/U cementing services. Topped-off all three casing strings with 12 sx of cement. Installed subsurface P&A marker per NMOCD regulations. Photographed the P&A marker in place and recorded its location via GPS coordinates. Back filled P&A marker. R/D and MOL.

---

## Wellbore Diagram

Mary K #1

API #: 30-005-62232

Chaves County, New Mexico

### Plug 3

788 feet - Surface

788 feet plug

82 sacks of Type III Cement

12 sacks of Type III Cement Top Off

### Plug 2

1322 feet - 962 feet

360 feet plug

25 sacks of Type III Cement

### Plug 1

3495 feet - 3120 feet

375 feet plug

25 sacks of Type III Cement

### Surface Casing

13.375" 61# @ 247 ft

### Formation

San Andres - 528 ft

Glorieta - 1280 ft

Abo - 3528 ft

### Intermediate Casing

8.625" 24# @ 787 ft

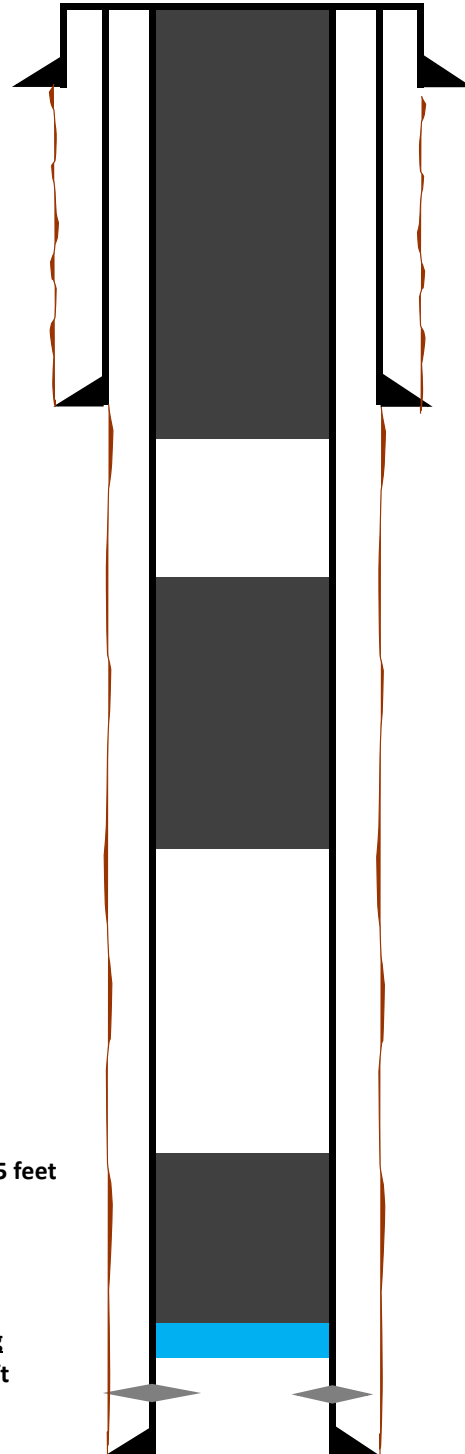
### Perforations

3551 ft - 3586 ft

Retainer @ 3495 feet

### Production Casing

4.5" 9.5# @ 3981 ft

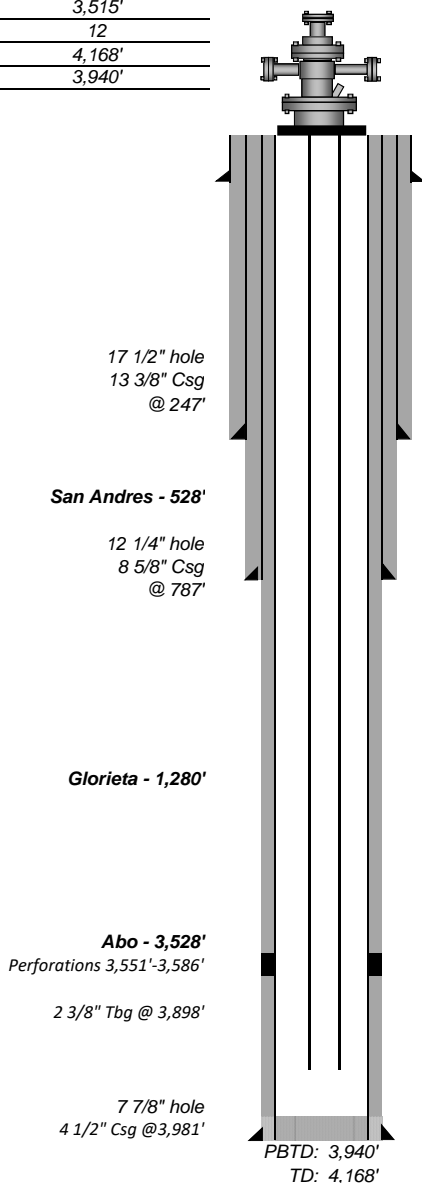


## CURRENT WELLBORE DIAGRAM



OPERATOR: (17470) Warren E & P, Inc.  
 WELL NUMBER: Mary K #1 30-005-62232 MARY K #001 [18849]  
 API: 30-005-62232  
 ZONE: Pecos Slope Abo / Undesignated Abo  
 LOCATION: Chaves County - Spud 4:00 PM 1/18/1985  
 SEC: 29 TWP: 10S RNG: 25E

SUR FNL: 660'  
 SUR FWL: 775'  
 GROUND ELEVATION: 3,515'  
 KB ABOVE GRD: 12  
 TOTAL DEPTH: 4,168'  
 PBTD: 3,940'



RIG DETAIL	
TYPE:	Grande Drilling Corporation

SURFACE CASING DETAIL		DEPTH (FT)
TYPE:	6 jts 13 3/8" 61# casing	247'
CEMENT:	LEAD: 200 sx Class "C" with 2 CaCl	RETURNS: YES

INTERMEDIATE CASING DETAIL		DEPTH (FT)
TYPE:	19 jts 8 5/8" 24# J-55 casing	787'
CEMENT:	LEAD: 175 sx "C" with 2% CaCl <sub>2</sub> TAIL: 200 sx lite "C" cement	RETURNS: YES

PRODUCTION CASING DETAIL		DEPTH (FT)
TYPE:	95 jts 4 1/2" 9.5# J-55 casing	3,981'
CEMENT:	LEAD: 300 SX 50/50 Poz	
CEMENT:	1" pipe to 1,350' cmt'd to surface w/300 sx Halliburton lite	RETURNS: YES

TUBING DETAIL			
No.	TYPE	LENGTH	DEPTH
0	Tubing Hanger	0.0	12
1	2-3/8" 6.5 #/ft J-55 Nipple	2.50	15
123	2-3/8" 4.75 #/ft J-55	31.57	3,898

NOTES: All depths from KB

---

## Wellbore Diagram

Mary K. #1

API #: 30-005-62232

Chaves County, NM

### Plug 3

787 feet - Surface

787 feet plug

55 sacks of Type III Cement

### Plug 2

1330 feet - 1180 feet

150 feet plug

10 sacks of Type III Cement

### Plug 1

3501 feet - 3100 feet

401 feet plug

25 sacks of Type III Cement

### Perforations

3551 ft - 3586 ft

### Surface Casing

13.375" 61# @ 247 ft

### Intermediate Casing

8.625" 24# @ 787 ft

### Formation

San Andres - 528 ft

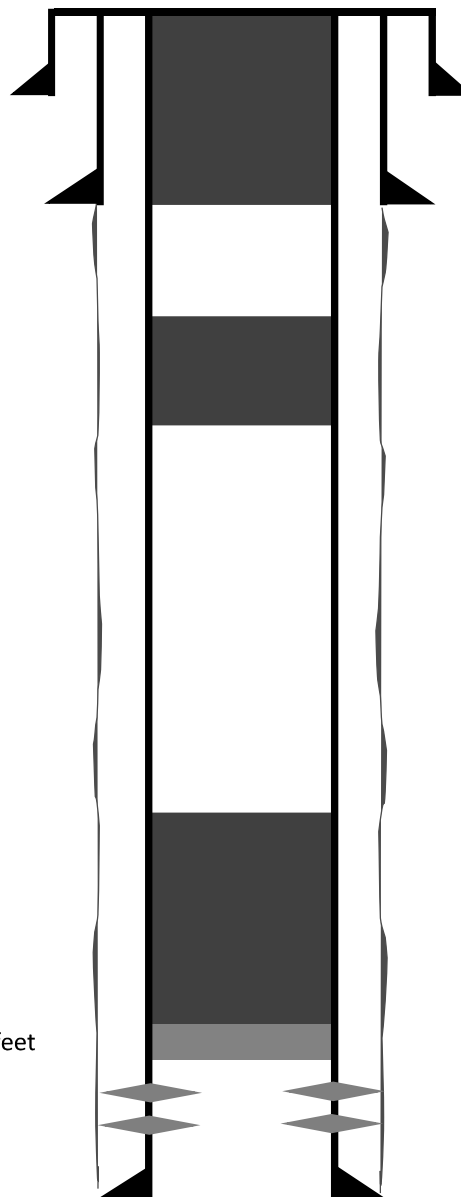
Glorieta - 1280 ft

Abo - 3528 ft

Retainer @ 3501 feet

### Production Casing

4.5" 9.5# @ 3981 ft



**District I**  
1625 N. French Dr., Hobbs, NM 88240  
Phone:(575) 393-6161 Fax:(575) 393-0720  
**District II**  
811 S. First St., Artesia, NM 88210  
Phone:(575) 748-1283 Fax:(575) 748-9720  
**District III**  
1000 Rio Brazos Rd., Aztec, NM 87410  
Phone:(505) 334-6178 Fax:(505) 334-6170  
**District IV**  
1220 S. St Francis Dr., Santa Fe, NM 87505  
Phone:(505) 476-3470 Fax:(505) 476-3462

**State of New Mexico**  
**Energy, Minerals and Natural Resources**  
**Oil Conservation Division**  
**1220 S. St Francis Dr.**  
**Santa Fe, NM 87505**

COMMENTS  
  
Action 106848

COMMENTS

Operator: WARREN E & P,INC. 5420 LBJ Freeway Dallas, TX 75240	OGRID: 17470
	Action Number: 106848
	Action Type: [C-103] NOI Plug & Abandon (C-103F)

COMMENTS

Created By	Comment	Comment Date
plmartinez	DATA ENTRY PM	6/14/2022

**District I**  
1625 N. French Dr., Hobbs, NM 88240  
Phone:(575) 393-6161 Fax:(575) 393-0720  
**District II**  
811 S. First St., Artesia, NM 88210  
Phone:(575) 748-1283 Fax:(575) 748-9720  
**District III**  
1000 Rio Brazos Rd., Aztec, NM 87410  
Phone:(505) 334-6178 Fax:(505) 334-6170  
**District IV**  
1220 S. St Francis Dr., Santa Fe, NM 87505  
Phone:(505) 476-3470 Fax:(505) 476-3462

**State of New Mexico**  
**Energy, Minerals and Natural Resources**  
**Oil Conservation Division**  
**1220 S. St Francis Dr.**  
**Santa Fe, NM 87505**

CONDITIONS  
  
Action 106848

CONDITIONS

Operator: WARREN E & P,INC. 5420 LBJ Freeway Dallas, TX 75240	OGRID: 17470
	Action Number: 106848
	Action Type: [C-103] NOI Plug & Abandon (C-103F)

CONDITIONS

Created By	Condition	Condition Date
kfortner	None	6/14/2022