

Well Name: LENTINI 1 FED	Well Location: T23S / R28E / SEC 1 / NWSW /	County or Parish/State: EDDY / NM
Well Number: 9	Type of Well: OIL WELL	Allottee or Tribe Name:
Lease Number: NMNM91078	Unit or CA Name:	Unit or CA Number:
US Well Number: 3001527569	Well Status: Abandoned	Operator: CHEVRON USA INCORPORATED

Accepted for record – NMOCD gc 6/3/2022

Subsequent Report

Sundry ID: 2671960

Type of Submission: Subsequent Report	Type of Action: Plug and Abandonment
Date Sundry Submitted: 05/16/2022	Time Sundry Submitted: 01:02
Date Operation Actually Began: 04/02/2022	

Actual Procedure: null

SR Attachments

Actual Procedure

- As_plugged_schematic_Lentini_1_Federal_9_20220516130202.pdf
- Cement_Plug_Summary_Lentini_1_Federal_9_20220516124742.pdf
- Daily_P_A_Operations_Summary_Lentini_1_Federal_9_20220516123639.pdf

Well Name: LENTINI 1 FED	Well Location: T23S / R28E / SEC 1 / NWSW /	County or Parish/State: EDDY / NM
Well Number: 9	Type of Well: OIL WELL	Allottee or Tribe Name:
Lease Number: NMNM91078	Unit or CA Name:	Unit or CA Number:
US Well Number: 3001527569	Well Status: Abandoned	Operator: CHEVRON USA INCORPORATED

Operator

I certify that the foregoing is true and correct. Title 18 U.S.C. Section 1001 and Title 43 U.S.C. Section 1212, make it a crime for any person knowingly and willfully to make to any department or agency of the United States any false, fictitious or fraudulent statements or representations as to any matter within its jurisdiction. Electronic submission of Sundry Notices through this system satisfies regulations requiring a

Operator Electronic Signature: HAYES THIBODEAUX

Signed on: MAY 16, 2022 01:02 PM

Name: CHEVRON USA INCORPORATED

Title: Well Abandonment Engineer

Street Address: 6307 DEAUVILLE BLVD

City: MIDLANDState: TX

Phone: (281) 726-9683

Email address: HAYES.THIBODEAUX@CHEVRON.COM

Field

Representative Name:

Street Address:

City:State:Zip:

Phone:

Email address:

BLM Point of Contact

BLM POC Name: JAMES A AMOS

BLM POC Title: Acting Assistant Field Manager

BLM POC Phone: 5752345927

BLM POC Email Address: jamos@blm.gov

Disposition: Accepted

Disposition Date: 05/17/2022

Signature: James A. Amos



EMC Cement Plugs Summary

Well Name LENTINI '1' FEDERAL 009	Field Name East Herradura Bend	Lease Lentini '1' Federal	Area Delaware Basin
Business Unit EMC	County/ Parish Eddy	Global Metrics Region EMC US East	Surface UWI 3001527569

Cement Plugs

Plug, 4/8/2022 15:30

Cementing Start Date 4/8/2022 15:30	Cementing End Date 4/8/2022 16:00	Description Cement Plug	Type Plug	Vendor Sunset Well Services	Technical Result Success
Stage Number 1	Top Depth (ftKB) 4,532.0	Bottom Depth (ftKB) 5,114.0	Avg Pump Rate (bbl/min) 3	Final Pump Pressure (psi) 0.0	Depth Tagged (MD) (ftKB)
Fluid Type Lead	Class C	Density (lb/gal) 14.80	Yield (ft³/sack) 1.32	Quantity (sacks) 59	Volume Pumped (bbl) 13.8

Plug, 4/8/2022 16:30

Cementing Start Date 4/8/2022 16:30	Cementing End Date 4/8/2022 16:45	Description Cement Plug	Type Plug	Vendor Sunset Well Services	Technical Result Success
Stage Number 1	Top Depth (ftKB) 3,318.0	Bottom Depth (ftKB) 3,604.0	Avg Pump Rate (bbl/min) 3	Final Pump Pressure (psi) 0.0	Depth Tagged (MD) (ftKB)
Fluid Type Lead	Class C	Density (lb/gal) 14.80	Yield (ft³/sack) 1.32	Quantity (sacks) 29	Volume Pumped (bbl) 6.8

Plug, 4/8/2022 17:15

Cementing Start Date 4/8/2022 17:15	Cementing End Date 4/8/2022 17:45	Description Cement Plug	Type Plug	Vendor Sunset Well Services	Technical Result Success
Stage Number 1	Top Depth (ftKB) 2,300.0	Bottom Depth (ftKB) 2,764.0	Avg Pump Rate (bbl/min) 3	Final Pump Pressure (psi) 0.0	Depth Tagged (MD) (ftKB) 2,285
Fluid Type Lead	Class C	Density (lb/gal) 14.80	Yield (ft³/sack) 1.32	Quantity (sacks) 47	Volume Pumped (bbl) 11.0

Plug, 4/11/2022 15:45

Cementing Start Date 4/11/2022 15:45	Cementing End Date 4/11/2022 16:00	Description Cement Plug	Type Plug	Vendor Sunset Well Services	Technical Result Success
Stage Number 1	Top Depth (ftKB) 1,136.0	Bottom Depth (ftKB) 1,266.0	Avg Pump Rate (bbl/min) 3	Final Pump Pressure (psi) 0.0	Depth Tagged (MD) (ftKB)
Fluid Type Lead	Class C	Density (lb/gal) 14.80	Yield (ft³/sack) 1.32	Quantity (sacks) 15	Volume Pumped (bbl) 3.5

Plug, 5/10/2022 12:45

Cementing Start Date 5/10/2022 12:45	Cementing End Date 5/10/2022 13:30	Description Cement Plug	Type Plug	Vendor Gladiator Energy Services	Technical Result Success
Stage Number 1	Top Depth (ftKB) 0.0	Bottom Depth (ftKB) 340.0	Avg Pump Rate (bbl/min) 1.1	Final Pump Pressure (psi) 2,700.0	Depth Tagged (MD) (ftKB)
Fluid Type Lead	Class C	Density (lb/gal) 14.80	Yield (ft³/sack) 1.32	Quantity (sacks) 40	Volume Pumped (bbl) 9.4

Total Sacks Pumped			
Start Date	End Date	Type	Sum of Quantity (sacks)
			170
4/8/2022 15:30	4/8/2022 16:00	Plug	59
4/8/2022 16:30	4/8/2022 16:45	Plug	29
4/8/2022 17:15	4/8/2022 17:45	Plug	47
4/11/2022 15:45	4/11/2022 16:00	Plug	15
5/10/2022 12:45	5/10/2022 13:30	Plug	40
Total (Sum)			360

Equipment Pressure Tests			
Date 4/8/2022 15:15	Test Type Casing	Applied Surface Pressure (psi) 800	Item Tested Original Hole

Comment

Pressure tested casing/CIBP 800 psi 15 min tested good.

Date 5/10/2022 09:45	Test Type BOP	Applied Surface Pressure (psi) 1,000	Item Tested Original Hole
Comment			
Test BOPE			

Well Header

Well Name: LENTINI '1' FEDERAL 009
Business Unit: EMC

Field Name: East Herradura Bend
County/ Parish: Eddy

Lease: Lentini '1' Federal
Metrics Region: EMC US East

Area: Delaware Basin
UWI: 3001527569

Basic Well Data

Current RKB: 3,026.00, 10/21/2014

Original RKB (ft): 3,026.00

Latitude (°): 32° 19' 59.196" N

Longitude (°): 104° 2' 44.232" W

Daily Operations

Start Date

3/21/2022

Summary

HSE meeting, hazard hunt, reviewed dig plan, checked wellhead gas/pressures, unload equipment, hand dig around wellhead to expose risers, removed old plumbing, made up new assemblies, installed new risers, painted new valves as per code, backfilled excavation, back drag location to make room for rig, load/secured equipment, location is prepped.

4/2/2022

Ready equipment for travel, Road rig and equipment to location from ADOL 1U & 1L. Spot in all equipment and rig up rig pump and all pump lines. EOT

4/5/2022

Checked pressure's and bled down all strings. Loaded and pressure tested tbg 1500 psi 15 min tested good. Laid down 48-7/8" and 27-3/4" found rods parted at box. Couplings and shoulders were very worn on rods. Removed pump in tee and rod bop found threads on B1 flange had 2" hole across. Speared and changed out B1 flange. Secured well.

4/6/2022	Checked pressure's and bled down all strings. Loaded tbg and retested failed dropped 400 psi in 10 min. N/D WH, N/U BOPE. Picked up on pipe 10' found pipe was stuck unable to rotate with tongs. Brought out power swivel and worked TAC free. POH to top of rod fish worked stuck rods unable to unseat pump.
4/7/2022	Checked pressure's and bled down all strings. Loaded tbg and BHD 30 bbls down casing continued trickling. Back off and lay down 119 3/4" rods. Shot drain holes at 2990'. Pulled tbg to TOF. Backed off and recovered 3 3/4" rods, 13-1.5" sinker bars and guided sub. Pulled tbg to seat nipple. Layed down BHA.
4/8/2022	Checked pressure's and bled down all strings. BHD 30 bbls down casing, continued trickling. RIH and set 5 1/2" CIBP at 5114'. TIH hydrotesting 161 jts tagged CIBP at 5114'. Pressure tested casing 800 psi 15 min tested good. Circulate MLF. Spot 59 sacks Class C cement from 5114 to 4532', 29 sacks Class C cement from 3604' to 3318', spot 47 sacks Class C cement at 2764' to 2300'.
4/11/2022	Checked pressure's 0 psi all strings. Bubble tested all strings surface failed 13-LEL, 22-CO. Loaded surface with 1 bbl. TIH tagged cement at 2285'. Pressure tested cement plug 1500 psi 15 min tested good. Run CBL found cement f/ 280' t/ surface and cement f/ 1130' t/ 1500'. Found multiple bridges in between. Recieved approval from Abiy Sisay to spot a plug from 1230'-1130' then come back with casing expander. Spot 15 sacks Class C cement f/ 1266' t/ 1136'. N/D BOP, N/U WH and pressure test 1500 psi. R/D WSU.

4/21/2022

MIRU WOS wireline and crane. RIH with gauge ring to 350'. RIH with casing expander adjacent to cemented casing and energized at 230' bottom, 226' top, and 228' middle. RDMO to monitor well. Achieve passing bubble test - micro-annulus sealed off.

5/9/2022

Road coil and crane to location. Spot in equipment. travel back.

5/10/2022

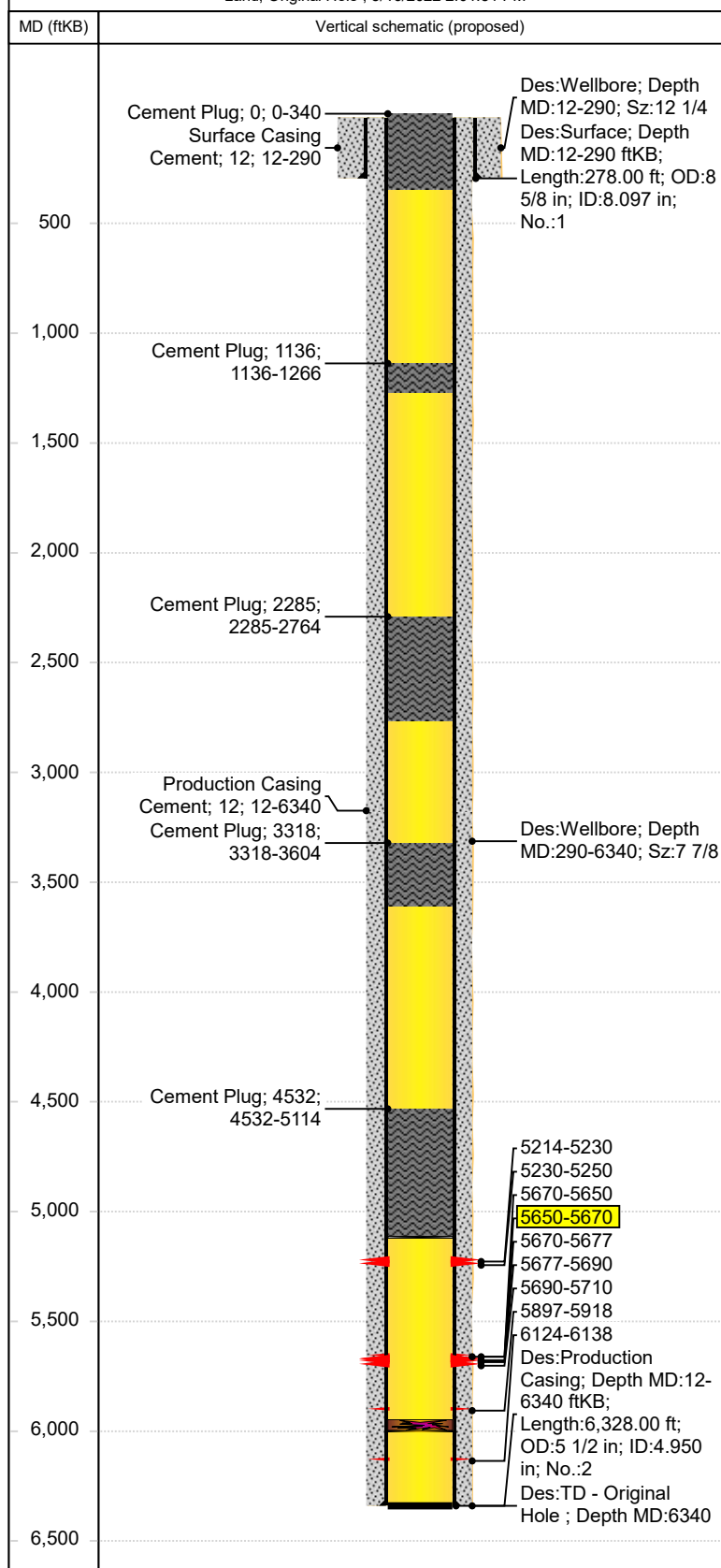
Arrive on location Hold safety meeting JSA HH Tenet # 10. Check location and well no gas. Bubble test both production and surface casing passed bubble test. Rig up injection head and BOPE.and equipment. Test BOPE 250 PSI low for 5 minutes 1000 PSI high for 10 minutes good. Attempt to RIH coil stacking out inside BOPE. Remove Injection head and BOPE crew found 1 1/2" coil bent from injection head and not allowing coil to go through the injection head. Fix bent joint and reinstall injection head and BOPE. RIH with 1 1/2" coil tagged at 1141' Spot 20 bbl salt gel. Pull up with 1 1/2" coil to 340' and spot 40 sacks class C cement from 340 to surface. POOH with 1 1/2" coil and top off well. as crew washed up equipment. Bubble test both production and surface casing both passed bubble test. Secure well. Rig down all equipment and pre pair to move to DR State EOT.



Abandonment Schematic

Well Name LENTINI '1' FEDERAL 009	Lease Lentini '1' Federal	Field Name East Herradura Bend	Business Unit EMC
State/Province New Mexico	County/ Parish Eddy	Surface UWI 3001527569	Surface ChevNo OV8025
Current RKB Elevation 3,026.00, 10/21/2014	Original RKB Elevation (ft) 3,026.00	Ground Elevation (ft) 3,014.00	Current KB to Ground (ft) 12.00
		Current KB to Csg Flange (ft)	Current KB to Tubing Head (ft)

Land, Original Hole , 5/16/2022 2:01:51 PM



HUD & Other in Hole

Top (ftKB)	Des	OD (in)
5,114.0	Cast Iron Bridge Plug	4.9
5,944.0	Fill (Sand / Mud / Debris)	4.9
5,996.0	Bridge Plug (Retrievable)	4.9

Cement Fluids

Description	Btm (ftKB)	Top Depth (ftKB)	Class	Quantity (sacks)
Cement Plug	5,114.0	4,532.0	C	59
Cement Plug	3,604.0	3,318.0	C	29
Cement Plug	2,764.0	2,300.0	C	47
Cement Plug	1,266.0	1,136.0	C	15
Cement Plug	340.0	0.0	C	40

Perforations

Top (ftKB)	Btm (ftKB)	Zone Name	Job	String Perforated
5,214.0	5,230.0	Brushy Canyon	Stimulation, 10/3/2013 08:00	Production Casing, Planned?-N, 6340ftKB
5,230.0	5,250.0	Brushy Canyon	Stimulation, 10/3/2013 08:00	Production Casing, Planned?-N, 6340ftKB
5,650.0	5,670.0	Brushy Canyon	Stimulation, 10/3/2013 08:00	Production Casing, Planned?-N, 6340ftKB
5,670.0	5,677.0	Brushy Canyon	Stimulation, 10/3/2013 08:00	Production Casing, Planned?-N, 6340ftKB
5,670.0	5,650.0	Brushy Canyon	Stimulation, 10/3/2013 08:00	Production Casing, Planned?-N, 6340ftKB
5,677.0	5,690.0	Brushy Canyon	Stimulation, 10/3/2013 08:00	Production Casing, Planned?-N, 6340ftKB
5,690.0	5,710.0	Brushy Canyon	Stimulation, 10/3/2013 08:00	Production Casing, Planned?-N, 6340ftKB
5,897.0	5,918.0	Brushy Canyon		Production Casing, Planned?-N, 6340ftKB
6,124.0	6,138.0	Brushy Canyon		Production Casing, Planned?-N, 6340ftKB

District I
1625 N. French Dr., Hobbs, NM 88240
Phone:(575) 393-6161 Fax:(575) 393-0720

District II
811 S. First St., Artesia, NM 88210
Phone:(575) 748-1283 Fax:(575) 748-9720

District III
1000 Rio Brazos Rd., Aztec, NM 87410
Phone:(505) 334-6178 Fax:(505) 334-6170

District IV
1220 S. St Francis Dr., Santa Fe, NM 87505
Phone:(505) 476-3470 Fax:(505) 476-3462

State of New Mexico
Energy, Minerals and Natural Resources
Oil Conservation Division
1220 S. St Francis Dr.
Santa Fe, NM 87505

CONDITIONS

Action 113058

CONDITIONS

Operator: CHEVRON U S A INC 6301 Deauville Blvd Midland, TX 79706	OGRID: 4323
	Action Number: 113058
	Action Type: [C-103] Sub. Plugging (C-103P)

CONDITIONS

Created By	Condition	Condition Date
gcordero	None	6/3/2022