

District I  
1625 N. French Dr., Hobbs, NM 88240  
District II  
811 S. First St., Artesia, NM 88210  
District III  
1000 Rio Brazos Road, Aztec, NM 87410  
District IV  
1220 S. St. Francis Dr., Santa Fe, NM 87505

State of New Mexico  
Energy Minerals and Natural Resources  
Department  
Oil Conservation Division  
1220 South St. Francis Dr.  
Santa Fe, NM 87505

Form C-144  
Revised April 3, 2017

**For temporary pits, below-grade tanks, and multi-well fluid management pits**, submit to the appropriate NMOC District Office.  
**For permanent pits** submit to the Santa Fe Environmental Bureau office and provide a copy to the appropriate NMOC District Office.

Pit, Below-Grade Tank, or  
Proposed Alternative Method Permit or Closure Plan Application

Type of action: ☒ Below grade tank registration  
BGT1 Closure Plan ☐ Permit of a pit or proposed alternative method  
☐ Closure of a pit, below-grade tank, or proposed alternative method  
☐ Modification to an existing permit/or registration  
☐ Closure plan only submitted for an existing permitted or non-permitted pit, below-grade tank, or proposed alternative method

**Instructions: Please submit one application (Form C-144) per individual pit, below-grade tank or alternative request**

Please be advised that approval of this request does not relieve the operator of liability should operations result in pollution of surface water, ground water or the environment. Nor does approval relieve the operator of its responsibility to comply with any other applicable governmental authority's rules, regulations or ordinances.

1.  
Operator: SIMCOE, LLC OGRID #: 329736  
Address: 1199 Main Ave., Suite 101 Durango, CO 81301  
Facility or well name: Northeast Blanco Unit 072 A  
API Number: 30-045-25360 OCD Permit Number: \_\_\_\_\_  
U/L or Qtr/Qtr O Section 29 Township 31N Range 07W County: San Juan County  
Center of Proposed Design: Latitude 36.864367 Longitude -107.592367 NAD83  
Surface Owner: ☒ Federal ☐ State ☐ Private ☐ Tribal Trust or Indian Allotment

2.  
☐ **Pit:** Subsection F, G or J of 19.15.17.11 NMAC  
Temporary: ☐ Drilling ☐ Workover  
☐ Permanent ☐ Emergency ☐ Cavitation ☐ P&A ☐ Multi-Well Fluid Management Low Chloride Drilling Fluid ☐ yes ☐ no  
☐ Lined ☐ Unlined Liner type: Thickness \_\_\_\_\_ mil ☐ LLDPE ☐ HDPE ☐ PVC ☐ Other \_\_\_\_\_  
☐ String-Reinforced  
Liner Seams: ☐ Welded ☐ Factory ☐ Other \_\_\_\_\_ Volume: \_\_\_\_\_ bbl Dimensions: L \_\_\_\_\_ x W \_\_\_\_\_ x D \_\_\_\_\_

3.  
☒ **Below-grade tank:** Subsection I of 19.15.17.11 NMAC  
Volume: 40 bbl Type of fluid: Produced Water  
Tank Construction material: Steel  
☒ Secondary containment with leak detection ☐ Visible sidewalls, liner, 6-inch lift and automatic overflow shut-off  
☐ Visible sidewalls and liner ☐ Visible sidewalls only ☐ Other \_\_\_\_\_  
Liner type: Thickness \_\_\_\_\_ mil ☐ HDPE ☐ PVC ☐ Other \_\_\_\_\_

4.  
☐ **Alternative Method:**  
Submittal of an exception request is required. Exceptions must be submitted to the Santa Fe Environmental Bureau office for consideration of approval.

5.  
**Fencing:** Subsection D of 19.15.17.11 NMAC (*Applies to permanent pits, temporary pits, and below-grade tanks*)  
☐ Chain link, six feet in height, two strands of barbed wire at top (*Required if located within 1000 feet of a permanent residence, school, hospital, institution or church*)  
☐ Four foot height, four strands of barbed wire evenly spaced between one and four feet  
☒ Alternate. Please specify Four foot high steel mesh field fence (hog wire) with pipe top railing

6.

**Netting:** Subsection E of 19.15.17.11 NMAC (*Applies to permanent pits and permanent open top tanks*)☐ Screen ☐ Netting ☒ Other Expanded Metal top☐ Monthly inspections (If netting or screening is not physically feasible)

7.

**Signs:** Subsection C of 19.15.17.11 NMAC☐ 12"x 24", 2" lettering, providing Operator's name, site location, and emergency telephone numbers☒ Signed in compliance with 19.15.16.8 NMAC

8.

**Variances and Exceptions:**

Justifications and/or demonstrations of equivalency are required. Please refer to 19.15.17 NMAC for guidance.

***Please check a box if one or more of the following is requested, if not leave blank:***☐ Variance(s): Requests must be submitted to the appropriate division district for consideration of approval.☐ Exception(s): Requests must be submitted to the Santa Fe Environmental Bureau office for consideration of approval.

9.

**Siting Criteria (regarding permitting):** 19.15.17.10 NMAC***Instructions: The applicant must demonstrate compliance for each siting criteria below in the application. Recommendations of acceptable source material are provided below. Siting criteria does not apply to drying pads or above-grade tanks.*****General siting****Ground water is less than 25 feet below the bottom of a low chloride temporary pit or below-grade tank.**- ☐ NM Office of the State Engineer - iWATERS database search; ☐ USGS; ☐ Data obtained from nearby wells☐ Yes ☒ No  
☐ NA**Ground water is less than 50 feet below the bottom of a Temporary pit, permanent pit, or Multi-Well Fluid Management pit .**

NM Office of the State Engineer - iWATERS database search; USGS; Data obtained from nearby wells

☐ Yes ☐ No  
☒ NAWithin incorporated municipal boundaries or within a defined municipal fresh water well field covered under a municipal ordinance adopted pursuant to NMSA 1978, Section 3-27-3, as amended. **(Does not apply to below grade tanks)**

- Written confirmation or verification from the municipality; Written approval obtained from the municipality

☐ Yes ☐ NoWithin the area overlying a subsurface mine. **(Does not apply to below grade tanks)**

- Written confirmation or verification or map from the NM EMNRD-Mining and Mineral Division

☐ Yes ☐ NoWithin an unstable area. **(Does not apply to below grade tanks)**

- Engineering measures incorporated into the design; NM Bureau of Geology &amp; Mineral Resources; USGS; NM Geological Society; Topographic map

☐ Yes ☐ NoWithin a 100-year floodplain. **(Does not apply to below grade tanks)**

- FEMA map

☐ Yes ☐ No**Below Grade Tanks**

Within 100 feet of a continuously flowing watercourse, significant watercourse, lake bed, sinkhole, wetland or playa lake (measured from the ordinary high-water mark).

- Topographic map; Visual inspection (certification) of the proposed site

☐ Yes ☒ No

Within 200 horizontal feet of a spring or a fresh water well used for public or livestock consumption;.

- NM Office of the State Engineer - iWATERS database search; Visual inspection (certification) of the proposed site

☐ Yes ☒ No**Temporary Pit using Low Chloride Drilling Fluid** (maximum chloride content 15,000 mg/liter)

Within 100 feet of a continuously flowing watercourse, or any other significant watercourse or within 200 feet of any lakebed, sinkhole, or playa lake (measured from the ordinary high-water mark). (Applies to low chloride temporary pits.)

- Topographic map; Visual inspection (certification) of the proposed site

☐ Yes ☐ No

Within 300 feet from a occupied permanent residence, school, hospital, institution, or church in existence at the time of initial application.

- Visual inspection (certification) of the proposed site; Aerial photo; Satellite image

☐ Yes ☐ No

Within 200 horizontal feet of a spring or a private, domestic fresh water well used by less than five households for domestic or stock watering purposes, or 300feet of any other fresh water well or spring, in existence at the time of the initial application.

NM Office of the State Engineer - iWATERS database search; Visual inspection (certification) of the proposed site

☐ Yes ☐ No

Within 100 feet of a wetland.

- US Fish and Wildlife Wetland Identification map; Topographic map; Visual inspection (certification) of the proposed site

☐ Yes ☐ No

### **Temporary Pit Non-low chloride drilling fluid**

Within 300 feet of a continuously flowing watercourse, or any other significant watercourse, or within 200 feet of any lakebed, sinkhole, or playa lake (measured from the ordinary high-water mark).

- Topographic map; Visual inspection (certification) of the proposed site

☐ Yes ☐ No

Within 300 feet from a permanent residence, school, hospital, institution, or church in existence at the time of initial application.

- Visual inspection (certification) of the proposed site; Aerial photo; Satellite image

☐ Yes ☐ No

Within 500 horizontal feet of a spring or a private, domestic fresh water well used by less than five households for domestic or stock watering purposes, or 1000 feet of any other fresh water well or spring, in the existence at the time of the initial application;

- NM Office of the State Engineer - iWATERS database search; Visual inspection (certification) of the proposed site

☐ Yes ☐ No

Within 300 feet of a wetland.

- US Fish and Wildlife Wetland Identification map; Topographic map; Visual inspection (certification) of the proposed site

☐ Yes ☐ No

### **Permanent Pit or Multi-Well Fluid Management Pit**

Within 300 feet of a continuously flowing watercourse, or 200 feet of any other significant watercourse, or lakebed, sinkhole, or playa lake (measured from the ordinary high-water mark).

- Topographic map; Visual inspection (certification) of the proposed site

☐ Yes ☐ No

Within 1000 feet from a permanent residence, school, hospital, institution, or church in existence at the time of initial application.

- Visual inspection (certification) of the proposed site; Aerial photo; Satellite image

☐ Yes ☐ No

Within 500 horizontal feet of a spring or a fresh water well used for domestic or stock watering purposes, in existence at the time of initial application.

- NM Office of the State Engineer - iWATERS database search; Visual inspection (certification) of the proposed site

☐ Yes ☐ No

Within 500 feet of a wetland.

- US Fish and Wildlife Wetland Identification map; Topographic map; Visual inspection (certification) of the proposed site

☐ Yes ☐ No

10.

#### **Temporary Pits, Emergency Pits, and Below-grade Tanks Permit Application Attachment Checklist:** Subsection B of 19.15.17.9 NMAC

**Instructions:** Each of the following items must be attached to the application. Please indicate, by a check mark in the box, that the documents are attached.

- ☒ Hydrogeologic Report (Below-grade Tanks) - based upon the requirements of Paragraph (4) of Subsection B of 19.15.17.9 NMAC
- ☐ Hydrogeologic Data (Temporary and Emergency Pits) - based upon the requirements of Paragraph (2) of Subsection B of 19.15.17.9 NMAC
- ☒ Siting Criteria Compliance Demonstrations - based upon the appropriate requirements of 19.15.17.10 NMAC
- ☒ Design Plan - based upon the appropriate requirements of 19.15.17.11 NMAC
- ☒ Operating and Maintenance Plan - based upon the appropriate requirements of 19.15.17.12 NMAC
- ☒ Closure Plan (Please complete Boxes 14 through 18, if applicable) - based upon the appropriate requirements of Subsection C of 19.15.17.9 NMAC and 19.15.17.13 NMAC

☐ Previously Approved Design (attach copy of design) API Number: \_\_\_\_\_ or Permit Number: \_\_\_\_\_

11.

#### **Multi-Well Fluid Management Pit Checklist:** Subsection B of 19.15.17.9 NMAC

**Instructions:** Each of the following items must be attached to the application. Please indicate, by a check mark in the box, that the documents are attached.

- ☐ Design Plan - based upon the appropriate requirements of 19.15.17.11 NMAC
- ☐ Operating and Maintenance Plan - based upon the appropriate requirements of 19.15.17.12 NMAC
- ☐ A List of wells with approved application for permit to drill associated with the pit.
- ☐ Closure Plan (Please complete Boxes 14 through 18, if applicable) - based upon the appropriate requirements of Subsection C of 19.15.17.9 NMAC and 19.15.17.13 NMAC
- ☐ Hydrogeologic Data - based upon the requirements of Paragraph (4) of Subsection B of 19.15.17.9 NMAC
- ☐ Siting Criteria Compliance Demonstrations - based upon the appropriate requirements of 19.15.17.10 NMAC

☐ Previously Approved Design (attach copy of design) API Number: \_\_\_\_\_ or Permit Number: \_\_\_\_\_

12.

**Permanent Pits Permit Application Checklist:** Subsection B of 19.15.17.9 NMAC

**Instructions:** Each of the following items must be attached to the application. Please indicate, by a check mark in the box, that the documents are attached.

- ☐ Hydrogeologic Report - based upon the requirements of Paragraph (1) of Subsection B of 19.15.17.9 NMAC  
☐ Siting Criteria Compliance Demonstrations - based upon the appropriate requirements of 19.15.17.10 NMAC  
☐ Climatological Factors Assessment  
☐ Certified Engineering Design Plans - based upon the appropriate requirements of 19.15.17.11 NMAC  
☐ Dike Protection and Structural Integrity Design - based upon the appropriate requirements of 19.15.17.11 NMAC  
☐ Leak Detection Design - based upon the appropriate requirements of 19.15.17.11 NMAC  
☐ Liner Specifications and Compatibility Assessment - based upon the appropriate requirements of 19.15.17.11 NMAC  
☐ Quality Control/Quality Assurance Construction and Installation Plan  
☐ Operating and Maintenance Plan - based upon the appropriate requirements of 19.15.17.12 NMAC  
☐ Freeboard and Overtopping Prevention Plan - based upon the appropriate requirements of 19.15.17.11 NMAC  
☐ Nuisance or Hazardous Odors, including H<sub>2</sub>S, Prevention Plan  
☐ Emergency Response Plan  
☐ Oil Field Waste Stream Characterization  
☐ Monitoring and Inspection Plan  
☐ Erosion Control Plan  
☐ Closure Plan - based upon the appropriate requirements of Subsection C of 19.15.17.9 NMAC and 19.15.17.13 NMAC

13.

**Proposed Closure:** 19.15.17.13 NMAC

**Instructions:** Please complete the applicable boxes, Boxes 14 through 18, in regards to the proposed closure plan.

- Type: ☐ Drilling ☐ Workover ☐ Emergency ☐ Cavitation ☐ P&A ☐ Permanent Pit ☒ Below-grade Tank ☐ Multi-well Fluid Management Pit  
☐ Alternative
- Proposed Closure Method: ☒ Waste Excavation and Removal  
☐ Waste Removal (Closed-loop systems only)  
☐ On-site Closure Method (Only for temporary pits and closed-loop systems)  
☐ In-place Burial ☐ On-site Trench Burial  
☐ Alternative Closure Method

14.

**Waste Excavation and Removal Closure Plan Checklist:** (19.15.17.13 NMAC) **Instructions:** Each of the following items must be attached to the closure plan. Please indicate, by a check mark in the box, that the documents are attached.

- ☒ Protocols and Procedures - based upon the appropriate requirements of 19.15.17.13 NMAC  
☒ Confirmation Sampling Plan (if applicable) - based upon the appropriate requirements of Subsection C of 19.15.17.13 NMAC  
☒ Disposal Facility Name and Permit Number (for liquids, drilling fluids and drill cuttings)  
☒ Soil Backfill and Cover Design Specifications - based upon the appropriate requirements of Subsection H of 19.15.17.13 NMAC  
☒ Re-vegetation Plan - based upon the appropriate requirements of Subsection H of 19.15.17.13 NMAC  
☒ Site Reclamation Plan - based upon the appropriate requirements of Subsection H of 19.15.17.13 NMAC

15.

**Siting Criteria (regarding on-site closure methods only):** 19.15.17.10 NMAC

**Instructions:** Each siting criteria requires a demonstration of compliance in the closure plan. Recommendations of acceptable source material are provided below. Requests regarding changes to certain siting criteria require justifications and/or demonstrations of equivalency. Please refer to 19.15.17.10 NMAC for guidance.

Ground water is less than 25 feet below the bottom of the buried waste. - NM Office of the State Engineer - iWATERS database search; USGS; Data obtained from nearby wells	<input type="checkbox"/> Yes <input type="checkbox"/> No <input type="checkbox"/> NA
Ground water is between 25-50 feet below the bottom of the buried waste - NM Office of the State Engineer - iWATERS database search; USGS; Data obtained from nearby wells	<input type="checkbox"/> Yes <input type="checkbox"/> No <input type="checkbox"/> NA
Ground water is more than 100 feet below the bottom of the buried waste. - NM Office of the State Engineer - iWATERS database search; USGS; Data obtained from nearby wells	<input type="checkbox"/> Yes <input type="checkbox"/> No <input type="checkbox"/> NA
Within 100 feet of a continuously flowing watercourse, or 200 feet of any other significant watercourse, lakebed, sinkhole, or playa lake (measured from the ordinary high-water mark). - Topographic map; Visual inspection (certification) of the proposed site	<input type="checkbox"/> Yes <input type="checkbox"/> No
Within 300 feet from a permanent residence, school, hospital, institution, or church in existence at the time of initial application. - Visual inspection (certification) of the proposed site; Aerial photo; Satellite image	<input type="checkbox"/> Yes <input type="checkbox"/> No
Within 300 horizontal feet of a private, domestic fresh water well or spring used for domestic or stock watering purposes, in existence at the time of initial application. - NM Office of the State Engineer - iWATERS database; Visual inspection (certification) of the proposed site	<input type="checkbox"/> Yes <input type="checkbox"/> No
Written confirmation or verification from the municipality; Written approval obtained from the municipality	<input type="checkbox"/> Yes <input type="checkbox"/> No
Within 300 feet of a wetland. US Fish and Wildlife Wetland Identification map; Topographic map; Visual inspection (certification) of the proposed site	<input type="checkbox"/> Yes <input type="checkbox"/> No
Within incorporated municipal boundaries or within a defined municipal fresh water well field covered under a municipal ordinance	

adopted pursuant to NMSA 1978, Section 3-27-3, as amended.

- Written confirmation or verification from the municipality; Written approval obtained from the municipality

☐ Yes ☐ No

Within the area overlying a subsurface mine.

- Written confirmation or verification or map from the NM EMNRD-Mining and Mineral Division

☐ Yes ☐ No

Within an unstable area.

- Engineering measures incorporated into the design; NM Bureau of Geology & Mineral Resources; USGS; NM Geological Society; Topographic map

☐ Yes ☐ No

Within a 100-year floodplain.

- FEMA map

☐ Yes ☐ No

16.

**On-Site Closure Plan Checklist:** (19.15.17.13 NMAC) *Instructions: Each of the following items must be attached to the closure plan. Please indicate, by a check mark in the box, that the documents are attached.*

- ☐ Siting Criteria Compliance Demonstrations - based upon the appropriate requirements of 19.15.17.10 NMAC
- ☐ Proof of Surface Owner Notice - based upon the appropriate requirements of Subsection E of 19.15.17.13 NMAC
- ☐ Construction/Design Plan of Burial Trench (if applicable) based upon the appropriate requirements of Subsection K of 19.15.17.11 NMAC
- ☐ Construction/Design Plan of Temporary Pit (for in-place burial of a drying pad) - based upon the appropriate requirements of 19.15.17.11 NMAC
- ☐ Protocols and Procedures - based upon the appropriate requirements of 19.15.17.13 NMAC
- ☐ Confirmation Sampling Plan (if applicable) - based upon the appropriate requirements of 19.15.17.13 NMAC
- ☐ Waste Material Sampling Plan - based upon the appropriate requirements of 19.15.17.13 NMAC
- ☐ Disposal Facility Name and Permit Number (for liquids, drilling fluids and drill cuttings or in case on-site closure standards cannot be achieved)
- ☐ Soil Cover Design - based upon the appropriate requirements of Subsection H of 19.15.17.13 NMAC
- ☐ Re-vegetation Plan - based upon the appropriate requirements of Subsection H of 19.15.17.13 NMAC
- ☐ Site Reclamation Plan - based upon the appropriate requirements of Subsection H of 19.15.17.13 NMAC

17.

**Operator Application Certification:**

I hereby certify that the information submitted with this application is true, accurate and complete to the best of my knowledge and belief.

Name (Print): Sabre Beebe

Title: Field Environmental Coordinator

Signature: Sabre Beebe

Date: 03/14/2022

e-mail address: sabre.beebe@ikavenergy.com

Telephone: (970) 852-5172

18.

**OCD Approval:** ☐ Permit Application (including closure plan) ☒ Closure Plan (only) ☐ OCD Conditions (see attachment)

**OCD Representative Signature:** Shelly Wells

**Approval Date:** 7/12/2022

**Title:** Environmental Specialist-A

**OCD Permit Number:** BGT1

19.

**Closure Report (required within 60 days of closure completion):** 19.15.17.13 NMAC

*Instructions: Operators are required to obtain an approved closure plan prior to implementing any closure activities and submitting the closure report. The closure report is required to be submitted to the division within 60 days of the completion of the closure activities. Please do not complete this section of the form until an approved closure plan has been obtained and the closure activities have been completed.*

☐ **Closure Completion Date:** \_\_\_\_\_

20.

**Closure Method:**

- ☐ Waste Excavation and Removal ☐ On-Site Closure Method ☐ Alternative Closure Method ☐ Waste Removal (Closed-loop systems only)
- ☐ If different from approved plan, please explain.

21.

**Closure Report Attachment Checklist:** *Instructions: Each of the following items must be attached to the closure report. Please indicate, by a check mark in the box, that the documents are attached.*

- ☐ Proof of Closure Notice (surface owner and division)
- ☐ Proof of Deed Notice (required for on-site closure for private land only)
- ☐ Plot Plan (for on-site closures and temporary pits)
- ☐ Confirmation Sampling Analytical Results (if applicable)
- ☐ Waste Material Sampling Analytical Results (required for on-site closure)
- ☐ Disposal Facility Name and Permit Number
- ☐ Soil Backfilling and Cover Installation
- ☐ Re-vegetation Application Rates and Seeding Technique
- ☐ Site Reclamation (Photo Documentation)

On-site Closure Location: Latitude \_\_\_\_\_ Longitude \_\_\_\_\_ NAD: ☐ 1927 ☐ 1983

22.

**Operator Closure Certification:**

I hereby certify that the information and attachments submitted with this closure report is true, accurate and complete to the best of my knowledge and belief. I also certify that the closure complies with all applicable closure requirements and conditions specified in the approved closure plan.

Name (Print): \_\_\_\_\_ Title: \_\_\_\_\_

Signature: \_\_\_\_\_ Date: \_\_\_\_\_

e-mail address: \_\_\_\_\_ Telephone: \_\_\_\_\_



## Hydrogeological Report for Northeast Blanco Unit 072 A

### General Geology and Hydrology:

The San Juan Basin is a typical Rocky Mountain Basin with a gently dipping southern flank and a steeply dipping northern flank. Asymmetrically layered Tertiary sandstones and shales, along with Quaternary alluvial deposits, dominate surficial geology (Dane and Bachman, 1965). The proposed pit location will be in the north-central San Juan Basin near Navajo Lake. The predominant geologic formation is the San Jose Formation of Tertiary age, which underlies surface soils and is often exposed (Dane and Bachman, 1965). Deposits of Quaternary alluvial and aeolian sands occur near the surface of the area, especially near streams and washes.

Cretaceous and Tertiary sandstones, as well as Quaternary alluvial deposits, serve as the primary aquifers in the San Juan Basin (Stone et al., 1983). In most of the proposed area, the San Jose Formation lies at the surface and overlies the Nacimiento Formation. Thickness of the San Jose ranges from 200 to 2700 feet, thickening from west to east across the region of interest (Stone et al., 1983). Aquifers within the coarser and continuous sandstone bodies of the San Jose Formation are between 0 and 2700' deep in this section of the basin (Stone et al., 1983). Groundwater within these aquifers flows regionally to the southwest, towards the San Juan River. More locally, groundwater flow is controlled by Navajo Lake. Little specific hydrogeologic data is available for the San Jose formation system, but "numerous wells and springs used for stock and domestic supplies" draw their water from the San Jose Formation (Stone et al., 1983).

The prominent soil types at the proposed site are entisols and aridisols, which are defined as soils exhibiting little to no profile development ([www.emnrd.state.nm.us](http://www.emnrd.state.nm.us)). Soils are basically unaltered from their parent rock. Miles of arroyos, washes and intermittent streams exist as part of the drainage network towards the San Juan River. These features often cut into soil and other unconsolidated materials, contributing to sedimentation downstream. The sudden influx of water from storm events easily erodes the soils that cover the area and prohibits effective recharge to the underlying aquifers.

Regional weather further prohibits active recharge. The climate is arid, averaging almost 13 inches of rainfall annually. As is typical of the southwestern United States monsoonal weather patterns, most precipitation falls from July through September. The heaviest rainfall occurs in the summer in isolated, intense cloudbursts. September through June is relatively dry. Snow generally falls from December to mid-February and averages less than one-half inch in depth. The most active recharge occurs during the winter snowmelt periods from the upper elevations (Western Regional Climate Center [www.wrcc.dri.edu](http://www.wrcc.dri.edu)).

The predominant vegetation is sagebrush and grasses with a more restricted pinon-juniper association (Dick-Peddie, 1993).

### Site Specific Hydrogeology:

The depth to groundwater at the site is estimated to be greater than 100'. This estimation is based on data from Stone and others (1983), the USGS Groundwater Atlas of the United States and depth to groundwater data published on the New Mexico State Engineer's iWaters Database website. Local topography, proximity to adjacent channels and springs are also taken into consideration.

The region is dominated by Navajo Lake and its associated canyons and gullies as evidenced on the attached topographic map and aerial photo. Relatively large, flat-topped mesas composed of thick sandstone sequences surround the perimeter of the lake and are often over 200 feet higher in elevation than the lake. Canyons and gullies erode into the sandstone and are filled with alluvium. This site is located on a mesa top 1.39 miles away from the main channel of Navajo Lake and is over 280 feet higher in elevation than the surface of the lake water. Los Pinos River is approximately 147- feet to the west of the site, and about 285 feet lower in elevation.

The massive sandstone outcrops, upon which the site in question is situated, is part of the San Jose Formation. Beds of water-yielding sandstone are present in the San Jose Formation, which are fluvial in origin and are interbedded with mudstone, siltstone & shale. Porous sandstones from the principal aquifers in the area, while relatively impermeable

shales and mudstones form the principal aquifers in the area, while relatively impermeable shales and mudstones form confining units between the aquifers (Stone et al, 1983). "Extensive intertonguing" of different members of this formation is reported (Stone et al., 1983). Local aquifers exist within the San Jose Formation at depths greater than 100 feet and thicknesses of the aquifers can be up to several hundred feet (USGS, Groundwater Atlas of the US; Stone et al., 1983).

Depth to groundwater data is extremely limited in this region. Groundwater data available from the NM State Engineer's iWaters Database for wells near the below grade tank are attached and are plotted on the iWaters Groundwater data map. The nearest permitted well lies 1.08 miles to the northeast (SJ 03355). The water is used for livestock watering, as are many others in the surrounding area. Depth to groundwater in the permitted waterwell is recorded as 470 feet. Other wells located near Navajo Lake at similar elevations to the site in question contain groundwater at depths in excess of 400 feet.

The elevation difference of over 200 feet between the site and Navajo Lake, the lack of other surface water features and groundwater depths greater than 400 feet deep in nearby permitted water wells is enough to suggest that groundwater at the site is greater than 100 feet.

#### **Reference:**

Dane, C.H. and Bachman, G. O., 1965, Geologic Map of New Mexico: U.S. Geological Survey, 1 sheet, scale 1:500,000.  
Dick-Peddie, W.A., 1993, New Mexico Vegetation - Past, Present and Future: Albuquerque, New Mexico, University of New Mexico Press, 244 p.  
Stone, W.J., Lyford, F. P., Frenzel, P.F., Mizell, N.H. and Padgett, E.T., 1983, Hydrogeology and water resources of the San Juan Basin, New Mexico: HR-6 New Mexico Bureau of Geology and Mineral Resources Hydrology Report 6.  
USGS, Groundwater Atlas of the United States: Arizona, Colorado, New Mexico, Utah, HA 730-C: (<http://www.pubs.usas.gov/>).  
Western Region Climate Center, 2008, New Mexico climate summaries: Desert Research Institute at <http://www.wrcc.dri.edu/summerv/climsmnm.html>.  
New Mexico Energy, Minerals and Natural Resources Department, [www.emnrd.state.nm.us](http://www.emnrd.state.nm.us)

### **Siting for Northeast Blanco Unit 072 A**

The location is not located in an unstable area per the Topographic map attached.

No continuously flowing water courses near the proposed location.

The location is not near any private buildings, public buildings private water sources, or public water sources. Nearest water well SJ 3355 is approximately 1.08 miles to the northeast of the location.

There are no wetlands near the location.

Per the New Mexico Energy, Minerals and Natural Resources Department GIS resource there are no mines, mills or quarries near the location. Map is attached.

Per the FEMA Floodplain map which is attached the location is outside of the 500-year flood plain.

No excavated material will be placed within 300 feet of a flowing water course or within 200 feet of any other defined water course.





# New Mexico Office of the State Engineer

## Point of Diversion Summary

(quarters are 1=NW 2=NE 3=SW 4=SE)  
 (quarters are smallest to largest) (NAD83 UTM in meters)

Well Tag	POD Number	Q64	Q16	Q4	Sec	Tw	Rng	X	Y
RG 79400		1	1	1	10	07N	06W	274645	3859770*

x  
**Driller License:** 769 **Driller Company:** ENCHANTED DRILLING, LLC.

**Driller Name:**

<b>Drill Start Date:</b> 01/13/2003	<b>Drill Finish Date:</b> 01/20/2003	<b>Plug Date:</b>
<b>Log File Date:</b> 05/28/2003	<b>PCW Rcv Date:</b>	<b>Source:</b> Shallow
<b>Pump Type:</b>	<b>Pipe Discharge Size:</b>	<b>Estimated Yield:</b> 1 GPM
<b>Casing Size:</b> 4.50	<b>Depth Well:</b> 150 feet	<b>Depth Water:</b> 70 feet

x  

Casing Perforations:	Top	Bottom
	100	150

\*UTM location was derived from PLSS - see Help

The data is furnished by the NMOSE/ISC and is accepted by the recipient with the expressed understanding that the OSE/ISC make no warranties, expressed or implied, concerning the accuracy, completeness, reliability, usability, or suitability for any particular purpose of the data.

3/10/22 11:38 AM

POINT OF DIVERSION SUMMARY



# OSE POD Locations Map



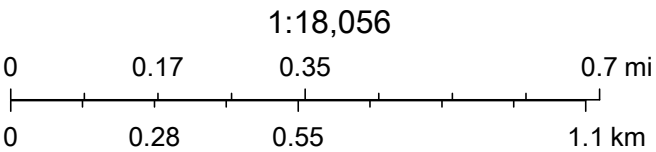
3/10/2022, 12:58:36 PM

GIS WATERS PODs

- Active
- OSE District Boundary
- Federal Lands

- New Mexico State Trust Lands
  - Subsurface Estate
  - Surface Estate
  - Both Estates

- Counties
- SiteBoundaries



Esri, HERE, GeoTechnologies, Inc., Esri, HERE, Garmin, GeoTechnologies, Inc., U.S. Department of Energy Office of Legacy Management, Maxar



## National Flood Hazard Layer FIRMette



107°35'51"W 36°52'6"N



## Legend

SEE FIS REPORT FOR DETAILED LEGEND AND INDEX MAP FOR FIRM PANEL LAYOUT

SPECIAL FLOOD HAZARD AREAS		Without Base Flood Elevation (BFE) Zone A, V, A99
		With BFE or Depth Zone AE, AO, AH, VE, AR
		Regulatory Floodway
OTHER AREAS OF FLOOD HAZARD		0.2% Annual Chance Flood Hazard, Areas of 1% annual chance flood with average depth less than one foot or with drainage areas of less than one square mile Zone X
		Future Conditions 1% Annual Chance Flood Hazard Zone X
		Area with Reduced Flood Risk due to Levee. See Notes. Zone X
		Area with Flood Risk due to Levee Zone D
OTHER AREAS		NO SCREEN Area of Minimal Flood Hazard Zone X
		Effective LOMRs
GENERAL STRUCTURES		Area of Undetermined Flood Hazard Zone D
		Channel, Culvert, or Storm Sewer
OTHER FEATURES		Levee, Dike, or Floodwall
		Cross Sections with 1% Annual Chance Water Surface Elevation
MAP PANELS		20.2
		17.5
		Coastal Transect
		Base Flood Elevation Line (BFE)
		Limit of Study
		Jurisdiction Boundary
		Coastal Transect Baseline
		Profile Baseline
		Hydrographic Feature
		Digital Data Available
		No Digital Data Available
		Unmapped



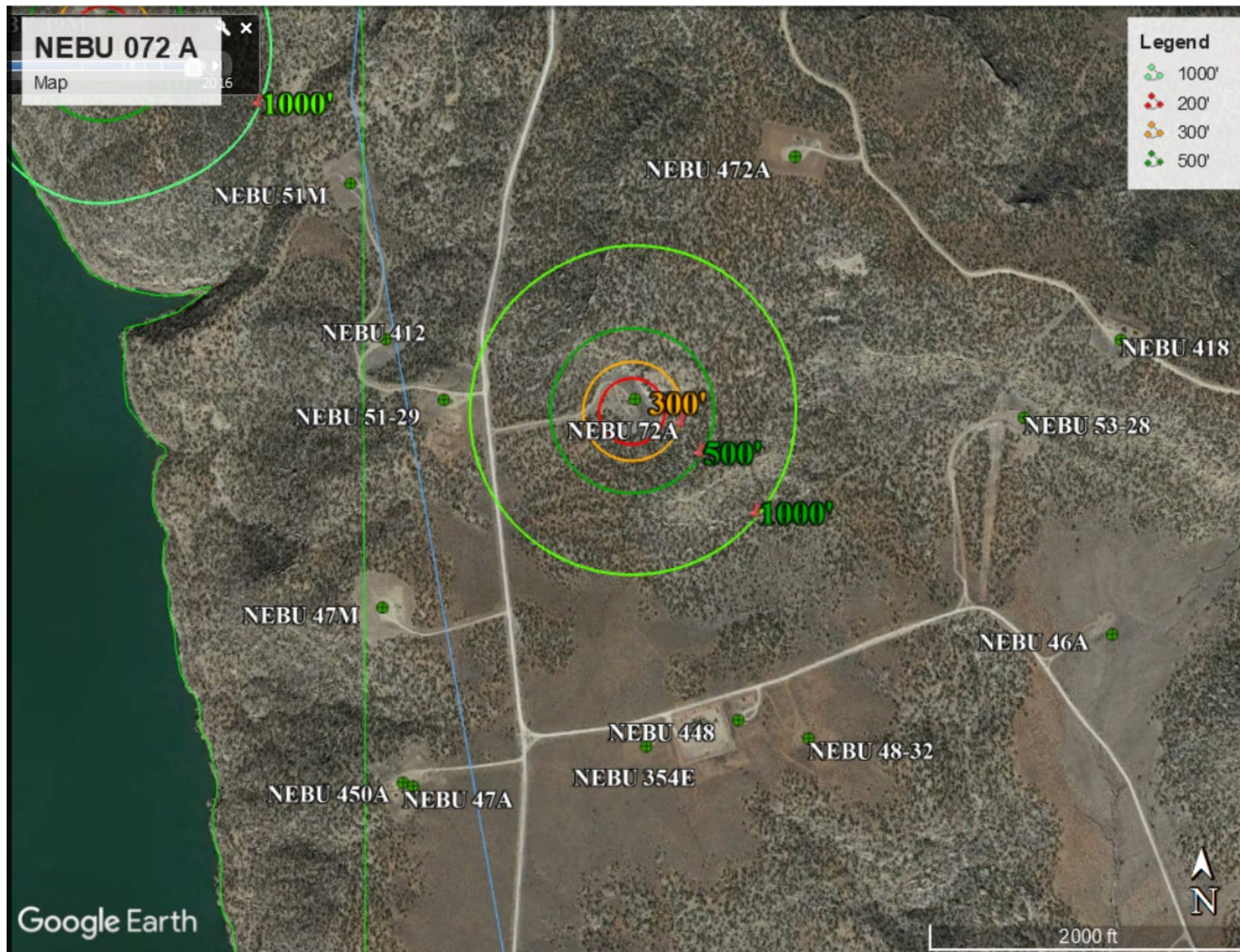
The pin displayed on the map is an approximate point selected by the user and does not represent an authoritative property location.

This map complies with FEMA's standards for the use of digital flood maps if it is not void as described below. The basemap shown complies with FEMA's basemap accuracy standards

The flood hazard information is derived directly from the authoritative NFHL web services provided by FEMA. This map was exported on 3/10/2022 at 2:46 PM and does not reflect changes or amendments subsequent to this date and time. The NFHL and effective information may change or become superseded by new data over time.

This map image is void if the one or more of the following map elements do not appear: basemap imagery, flood zone labels, legend, scale bar, map creation date, community identifiers, FIRM panel number, and FIRM effective date. Map images for unmapped and unmodernized areas cannot be used for regulatory purposes.








# Active Mines in New Mexico

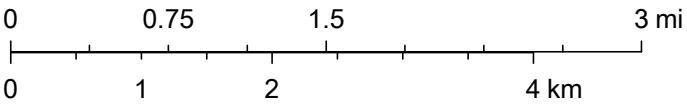


3/10/2022, 2:05:33 PM

 Township / Range

 Sections

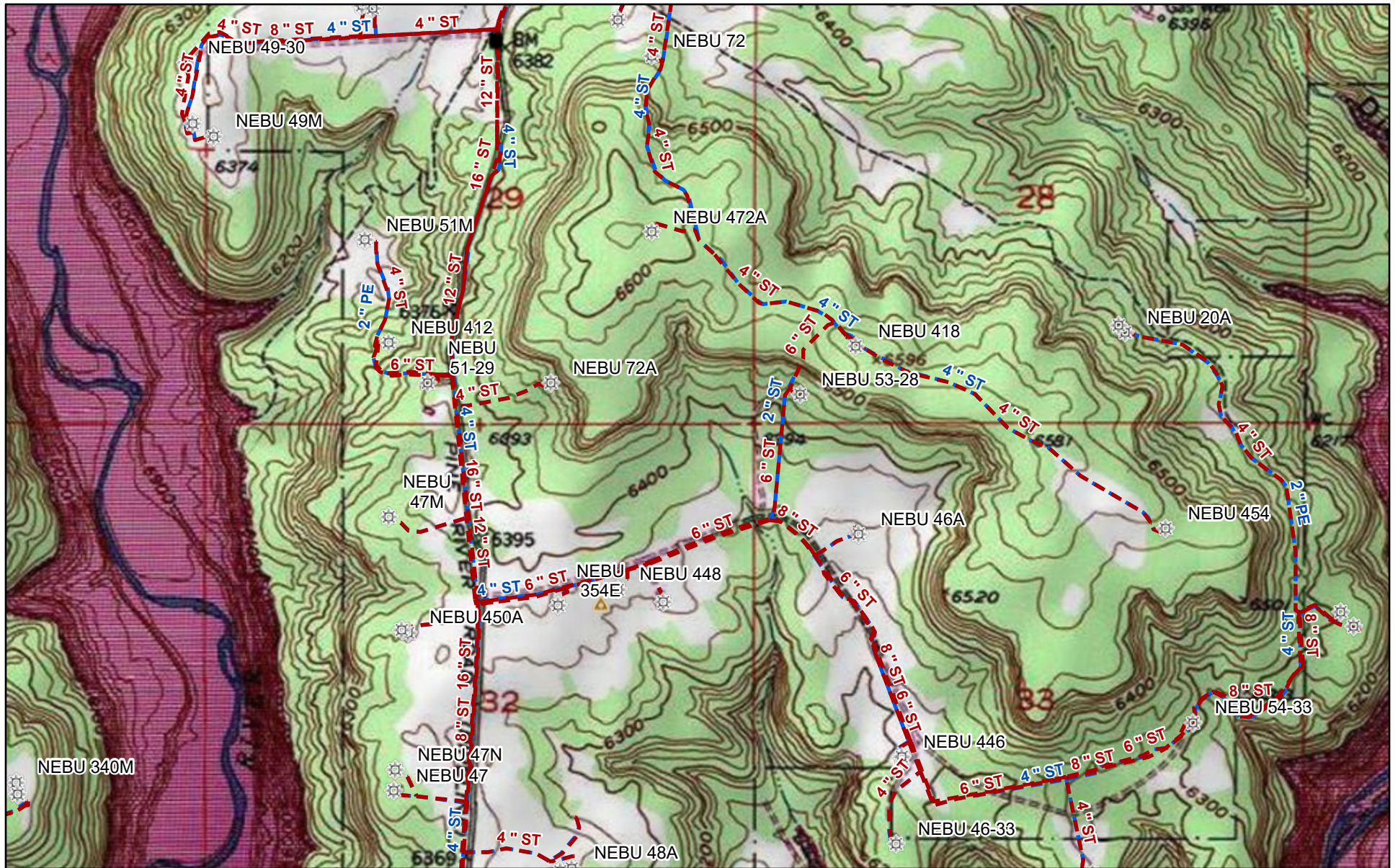
1:72,224



Esri, HERE, Garmin, Earthstar Geographics

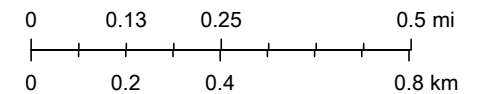


## 2022.03.10 NEBU 072 A TOPO Map



3/10/2022

1:19,982



Copyright:© 2013 National Geographic Society, i-cubed



Design / Drawing NOTE:

40 bbl tank was installed by Devon Energy. No 40 bbl tank design or drawing available to include in this document. This tank is going to be closed out with a re-installation of a different 40 bbl tank.

**Devon Energy Production Company, L.P.**  
**San Juan Basin**  
**Below Grade Tank Design and Construction Plan**

In accordance with Rule 19.15.17 NMAC the following information describes the design and construction of below grade tanks on Devon Energy Production Company, LP. locations. This is Devon Energy's standard procedure for all below grade tanks (BGT). A separate plan will be submitted for any BGT which does not conform to this plan.

**General Plan**

- 1) Devon will design and construct a BGT to contain liquids to prevent contamination of fresh water and protect public health and the environment.
- 2) Devon will post a well sign, in compliance with 19.15.16.8 NMAC, on the existing well site operated by Devon Energy where the existing BGT is located. The sign will list the operator on record as the operator, the location of the well site by unit letter, section, township, range, and emergency telephone numbers.
- 3) Devon is requesting approval of an alternative fencing to be used on BGT locations. BGT locations will be fenced utilizing 48" steel mesh field-fence (hog wire) with pipe railing along the top. A 6' chain link fence will be utilized around the well pad if the well site is within a city limit or 1/4 mile of a permanent residence, school, hospital, institution, or church. BGTs located within 1000' of a permanent residence, school, hospital, institution, or church will be fenced by a 6' chain link fence with at least 2 strands of barbed wire at the top. All gates associated with BGTs will remain closed when responsible individuals are not on site.
- 4) Devon will construct BGT with an expanded metal covering or solid vaulted top on the top of the BGT.
- 5) Devon shall ensure that a BGTs are constructed of materials resistant to the BGT's particular contents and resistant to damage from sunlight. Tanks will be constructed of A36 carbon steel with 3/16" sides and 1/4" bottom. (see attached drawing)
- 6) Devon shall have a properly constructed foundation consisting of a level base free of rocks, debris, sharp edges or irregularities to prevent punctures, cracks or indentations of the tank bottom
- 7) Devon shall construct a BGT to prevent overflow and the collection of surface water run-on. Devon Energy's free board is set at 1 foot from the top of the tank. We have berms set to prevent any surface water run-on.
- 8) Devon will construct and use BGT's having double walls. The BGT side walls will be open with a plug for visual inspection for leaks. The bottom shall be elevated with the use of gravel to raise the BGT above the underlying ground surface to prevent damage to the bottom of the BGT.
- 9) The general; specification for design and construction are attached in the Devon document.

**Devon Energy Production Company, LP.  
San Juan Basin  
Below Grade Tank Maintenance and Operating Plan**

In accordance with Rule 19.15.17 NMAC the following information describes the maintenance and operation of below grade tanks on Devon Energy Production Company, LP. locations. This is Devon Energy's standard procedure for all below grade tanks. A separate plan will be submitted for any BGT which does not conform to this plan.

**General Plan**

- 1) Devon will operate and maintain a BGT to contain liquids and solids as well as prevent contamination of fresh water to protect public health and the environment. Fluid levels will be monitored weekly and high levels will be removed as necessary. Monthly inspections will be conducted to monitor integrity of BGT systems.
- 2) Devon shall not allow a BGT to overflow or allow surface water run-on to enter the BGT. See attached drawing of vault design and placement of diversion berms.
- 3) Devon shall continuously remove any visible or measurable layer of oil from the fluid surface of a BGT in an effort to prevent significant accumulation of oil overtime.
- 4) Devon shall inspect the BGT at least once a month and maintain a written record of each inspection for five years. Monthly inspections will consist of documenting the following: (see attached template)
  - Well name
  - Section, Township, Range
  - Latitude longitude coordinates
  - Signature of inspector
  - Inspection date
  - Plug in place
  - Outer side wall ok
  - Fluid between walls
  - Measurable quantity oil
  - Comments
- 5) Devon shall maintain 1 foot free board to prevent overtopping of the BGT.
- 6) Devon will not discharge into or store any hazardous waste in any BGT.
- 7) If a BGT develops a leak or if any penetration of a BGT below the liquid surface on the outer wall, Devon will remove all liquids above the damage or leak within 48 hours, notify the appropriate division district office within 48 hours of the discovery and repair the damage or replace the BGT.

SIMCOE LLC (Previously BP America)  
SAN JUAN BASIN, NORTHWEST NEW MEXICO

**Below-Grade Tank Closure Plan**

This plan will address the standard protocols and procedures for closure of below-grade tanks (BGTs) on this SIMCOE, LLC well sites. As stipulated in Paragraph A of 19.15.17.13 NMAC, SIMCOE, LLC shall close a BGT within the time periods provided in 19.15.17.13 NMAC, or by an earlier date that the New Mexico Oil Conservation Division (NMOCD) requires because of imminent danger to fresh water, public health, safety, or the environment. If deviations from this plan are necessary, any specific changes will be included on form C-144 and approved by the NMOCD. SIMCOE, LLC shall close an existing BGT that does not meet the requirements of Paragraphs (1) through (4) of Subsection I of 19.15.17.11 NMAC or is not included in Paragraph (5) of Subsection I of 19.15.17.11 NMAC within five years after June 16, 2008, if not retrofit with a BGT that complies with the SIMCOE, LLC NMOCD approved BGT design attached to the SIMCOE, LLC Design and Construction Plan. SIMCOE, LLC shall close an existing BGT that does not meet the requirements of Paragraphs (1) through (4) of Subsection I of 19.15.17.11 NMAC, if not previously retrofitted to comply with the SIMCOE, LLC NMOCD approved BGT Design attached to the SIMCOE, LLC Design and Construction Plan, prior to any sale or change in operator pursuant to 19.15.9.9 NMAC. SIMCOE, LLC shall close the permitted BGT within 60 days of cessation of the BGTs operation or as required by the transitional provisions of Subsection B, D, or E of 19.15.17.17 NMAC.

**General Closure Plan**

1. SIMCOE, LLC shall notify the surface owner by certified mail that it plans to close a BGT. Evidence of mailing of the notice to the address of the surface owner shown in the county tax records demonstrates compliance with this requirement.
2. SIMCOE, LLC shall notify the division District III office verbally or by other means at least 72 hours, but not more than one (1) week, prior to any closure operation. The notice shall include the operator's name, and the location to be closed by unit letter, section, township, and range. If the BGT closure is associated with a particular well, then the notice shall also include the well's name, number, and API number.
3. SIMCOE, LLC shall remove liquids and sludge from the BGT prior to implementing a closure method and dispose of the liquids and sludge in a NMOCD's division-approved facility. The facilities to be utilized are:
  - a. JFJ Land farm, Permit NM-01-010(B) (Solids and Sludge)
  - b. Basin Disposal, Permit NM-01-0005 (Liquids)
  - c. Envirotech Inc Soil Remediation Facility, Permit NM-01-0011 (Solids and Sludge)
  - d. Simcoe, LLC Operated 13 GCU SWD # 1, API 30-045-28601 (Liquids)
  - e. Simcoe, LLC Operated GCU 259 SWD, API 30-045-20006(Liquids)
  - f. Simcoe, LLC Operated GCU 306 SWD, API30-045-24286 (Liquids)
  - g. Simcoe, LLC Operated GCU 307 SWD, API30-045-24248 (Liquids)
  - h. Simcoe, LLC Operated GCU 328 SWD, API 30-045-24735(Liquids)
  - i. Simcoe, LLC Operated Pritchard SWD #1, API 30-045-28351 (Liquids)

4. Simcoe, LLC shall remove the BGT and dispose of it in a NMOCD approved facility or recycle, reuse, or reclaim it in a manner that the NMOCD approves. If a liner is present and must be disposed of it will be cleaned by scraping any soils or other attached materials on the liner to a de minimus amount and disposed at a permitted solid waste facility, pursuant to Subparagraph (m) of Paragraph (1) of Subsection C of 19.15.35.8 NMAC. Documentation as to the final disposition of the removed BGT will be provided in the final closure report.
5. Simcoe, LLC shall remove any on-site equipment associated with a BGT unless the equipment is required for well production.
6. Simcoe, LLC shall sample the soils beneath the BGT to determine whether a release has occurred. Simcoe, LLC shall collect at a minimum: a five (5) point composite sample and individual grab samples from any area that is wet, discolored or showing other evidence of a release and analyze for BTEX, TPH and chlorides. The testing methods for those constituents are as follows.

<b>Table 1</b> <b>Closure Criteria for Soils Beneath Below-Grade Tanks</b>			
Depth below bottom of pit to groundwater less than 10,000 mg/l TDS	Constituent	Method*	Limit**
≤50 feet	Chloride	EPA 300.0	600 mg/kg
	TPH	EPA SW-846 Method 418.1	100 mg/kg
	BTEX	EPA SW-846 Method 8021B or 8260B	50 mg/kg
	Benzene	EPA SW-846 Method 8021B or 8015M	10 mg/kg
51 feet-100 feet	Chloride	EPA 300.0	10,000 mg/kg
	TPH	EPA SW-846 Method 418.1	2,500 mg/kg
	GRO+DRO	EPA SW-846 Method 8015M	1,000 mg/kg
	BTEX	EPA SW-846 Method 8021B or 8260B	50 mg/kg
	Benzene	EPA SW-846 Method 8021B or 8015M	10 mg/kg
> 100 feet	Chloride	EPA 300.0	20,000 mg/kg
	TPH	EPA SW-846 Method 418.1	2,500 mg/kg
	GRO+DRO	EPA SW-846 Method 8015M	1,000 mg/kg
	BTEX	EPA SW-846 Method 8021B or 8260B	50 mg/kg
	Benzene	EPA SW-846 Method 8021B or 8015M	10 mg/kg

Notes: mg/Kg = milligram per kilogram

BTEX = benzene, toluene, ethylbenzene, and total xylenes

TPH = total petroleum hydrocarbons

TDS = total dissolved solids.

\* - Or other test methods approved by the division

\*\* - Numerical limits or natural background level, whichever is greater

7. Simcoe, LLC shall notify the division District III office of its results on form C-141.
8. If it is found that a release has occurred, then Simcoe, LLC will comply with 19.15.30 NMAC and 19.15.29 NMAC, as appropriate.
9. If the sampling demonstrates that a release has not occurred or that any release does not exceed the concentrations specified above, then BP shall backfill the excavation, with compacted, non-waste containing, earthen material; construct a division-prescribed soil cover, re-contour and re-vegetate the location. The location will be reclaimed if it is not within the active process area.
10. Simcoe, LLC shall reclaim the BGT location, and all areas associated with the BGT including associated access roads to a safe and stable condition that blends with the surrounding undisturbed area. Simcoe, LLC shall substantially restore the impacted surface area to the condition that existed prior to oil and gas operations by placement of the soil cover as provided in Subsection H of 19.15.17.13 NMAC, re-contour the location and associated areas to a contour that approximates the original contour and blends with the surrounding topography and re-vegetate according to Subsection I of 19.15.17.13 NMAC. 11. The soil cover for closures where the BGT has been removed or remediated to the NMOCD's satisfaction shall consist of the background thickness of topsoil or one foot of suitable material to establish vegetation at the site, whichever is greater.
12. Simcoe, LLC shall seed the disturbed area the first growing season after closure of the BGT. Seeding will be conducted by drilling on the contour whenever practical or by other division-approved methods. Vegetative cover will be, at a minimum, 70% of the native perennial vegetative cover (un-affected by overgrazing, fire or other intrusion damaging to native vegetation), consisting of at least three native plant species, including at least one grass, but not including noxious weeds, and maintenance of that cover through two successive growing seasons. During the two growing seasons that prove viability, there shall be no artificial irrigation of the vegetation.
13. Simcoe, LLC shall seed, plant and re-seed pursuant to Paragraph (3) of Subsection I of 19.15.17.13 NMAC, until the location successfully achieves the required vegetative cover.
14. Pursuant to Paragraph (5) of Subsection I of 19.15.17.13 NMAC, Simcoe, LLC shall notify the NMOCD when it has seeded or planted and when it successfully achieves revegetation.
15. Within 60 days of closure completion, Simcoe, LLC shall submit a closure report on NMOCD's form C-144, and will include the following:
  - a. proof of closure notification (surface owner and NMOCD)
  - b. sampling analytical reports: information required by 19.15.17 NMAC.
  - c. disposal facility name and permit number
  - d. details on back-filling, capping, covering, and where applicable re-vegetation application rates and seeding techniques and
  - e. site reclamation, photo documentation. Disposal Facility Name and Permit Number



16. Simcoe, LLC shall certify that all information in the report and attachments is accurate, truthful, and compliant with all applicable closure requirements and conditions specified in the approved closure plan.

**District I**  
1625 N. French Dr., Hobbs, NM 88240  
Phone:(575) 393-6161 Fax:(575) 393-0720  
**District II**  
811 S. First St., Artesia, NM 88210  
Phone:(575) 748-1283 Fax:(575) 748-9720  
**District III**  
1000 Rio Brazos Rd., Aztec, NM 87410  
Phone:(505) 334-6178 Fax:(505) 334-6170  
**District IV**  
1220 S. St Francis Dr., Santa Fe, NM 87505  
Phone:(505) 476-3470 Fax:(505) 476-3462

**State of New Mexico**  
**Energy, Minerals and Natural Resources**  
**Oil Conservation Division**  
**1220 S. St Francis Dr.**  
**Santa Fe, NM 87505**

CONDITIONS  
  
Action 90059

CONDITIONS

Operator:  SIMCOE LLC 1199 Main Ave., Suite 101 Durango, CO 81301	OGRID:  329736
	Action Number:  90059
	Action Type:  [C-144] Below Grade Tank Plan (C-144B)

CONDITIONS

Created By	Condition	Condition Date
swells	None	7/12/2022