

Well Name: MONEY GRAHAM FED COM	Well Location: T26S / R29E / SEC 32 / LOT 4 /	County or Parish/State:
Well Number: 126H	Type of Well: OIL WELL	Allottee or Tribe Name:
Lease Number: NMNM38636	Unit or CA Name:	Unit or CA Number:
US Well Number: 3001549030	Well Status: Approved Application for Permit to Drill	Operator: TAP ROCK OPERATING LLC

Notice of Intent

Sundry ID: 2648553

Type of Submission: Notice of Intent	Type of Action: Other
Date Sundry Submitted: 12/13/2021	Time Sundry Submitted: 03:44
Date proposed operation will begin: 12/13/2021	

Procedure Description: Tap Rock Operating would like to sundry the OH size for the curve and lateral from 6.75 inches to 7.875 inches. Please see attached updated drilling plans. Tap Rock will drill 8.75 inch hole from the 9.625 inch shoe to 7810 ft MD. Switch to 7.875 inch curve and lateral will be drilled to production TD.

Surface Disturbance

Is any additional surface disturbance proposed?: No

NOI Attachments

Procedure Description

Money_Graham_126H___TapRock_Drilling_Plan_12_9_21_20211213154348.pdf

Well Name: MONEY GRAHAM FED COM	Well Location: T26S / R29E / SEC 32 / LOT 4 /	County or Parish/State:
Well Number: 126H	Type of Well: OIL WELL	Allottee or Tribe Name:
Lease Number: NMNM38636	Unit or CA Name:	Unit or CA Number:
US Well Number: 3001549030	Well Status: Approved Application for Permit to Drill	Operator: TAP ROCK OPERATING LLC

Operator Certification

I certify that the foregoing is true and correct. Title 18 U.S.C. Section 1001 and Title 43 U.S.C. Section 1212, make it a crime for any person knowingly and willfully to make to any department or agency of the United States any false, fictitious or fraudulent statements or representations as to any matter within its jurisdiction. Electronic submission of Sundry Notices through this system satisfies regulations requiring a submission of Form 3160-5 or a Sundry Notice.

Operator Electronic Signature: JEFFREY TRLICA	Signed on: DEC 13, 2021 03:43 PM
Name: TAP ROCK OPERATING LLC	
Title: Regulatory Analyst	
Street Address: 523 PARK POINT DRIVE SUITE 200	
City: GOLDEN	State: CO
Phone: (720) 772-5910	
Email address: JTRLICA@TAPRK.COM	

Field Representative

Representative Name:		
Street Address:		
City:	State:	Zip:
Phone:		
Email address:		

BLM Point of Contact

BLM POC Name: CHRISTOPHER WALLS	BLM POC Title: Petroleum Engineer
BLM POC Phone: 5752342234	BLM POC Email Address: cwalls@blm.gov
Disposition: Approved	Disposition Date: 04/08/2022
Signature: Chris Walls	



Drilling Operations Plan
 Money Graham Fed Com 126H
 Tap Rock Operating, LLC
 SHL 249' FSL & 1044' FEL, Sec. 32
 BHL 200' FNL & 990' FEL, Sec. 29
 T. 26-S., R. 29-E Eddy County, NM

Elevation above Sea Level: 2867'

DRILLING PROGRAM

1. Estimated Tops

Formation	TVD	MD	Lithologies	Bearing
Quaternary Deposits	0	0	Surface	None
Rustler Anhydrite	500	500		Salt
Salado	945	945	Salt	Salt
Base Salt	2535	2535		Salt
Lamar	2750	2751	Limestone	None
Bell Canyon	2770	2771	Sandstone	Hydrocarbons
Cherry Canyon	3645	3646	Sandstone	Hydrocarbons
Brushy Canyon	4900	4902	Sandstone	Hydrocarbons
Bone Spring	6475	6478	Limestone	Hydrocarbons
KOP	7806	7809	Sandstone	Hydrocarbons
1st Bone Spring	7375	7379	Sandstone	Hydrocarbons
TD	8379	15502	Shale	Hydrocarbons

2. Notable Zones

2nd Bone Spring Sand is the target formation.

3. Pressure Control

Pressure Control Equipment (See Schematics):

A 15,000' 5,000 psi BOP stack consisting of 3 rams with 2 pipe rams, 1 blind ram, and 1 annular preventer will be used below surface casing to TD. See attachments for BOP and choke manifold diagrams. Also present will be an accumulator that meets the requirements of Onshore Order #2 for the pressure rating of the BOP stack. A rotating head will also be installed as needed. BOP will be inspected and operated as recommended in Onshore Order #2. A top drive check valve and sub equipped with a full opening valve sized to fit the drill pipe and collars will be available on the rig floor in the open position. The wellhead will be a multi-bowl speed head.

BOP Test procedure will be as follows:

After surface casing is set and the BOP is nipped up, the BOP pressure tests will be made with a third party tester to 250 psi low, 5000 psi high, and the annular preventer will be tested to 2,500 psi. The BOP will be tested in this manner after nipple-up if any break of the stack occurs.

Variance Requests:



Drilling Operations Plan
 Money Graham Fed Com 126H
 Tap Rock Operating, LLC
 SHL 249' FSL & 1044' FEL, Sec. 32
 BHL 200' FNL & 990' FEL, Sec. 29
 T. 26-S., R. 29-E Eddy County, NM

Tap Rock requests a variance to run a multi-bowl speed head for setting the Intermediate 1, and Production String. Tap Rock requests a variance to drill this well using a co-flex line between the BOP and choke manifold. Certification for proposed co-flex hose is attached. The hose is not required by the manufacturer to be anchored. In the event the specific hose is not available, one of equal or higher rating will be used.

Tap Rock requests the option to drill with Cut Brine or OBM in the lateral (See Mud Program below).

4. Casing & Cement

All Casing will be new.

Section	Drilled Interval			Casing Size	Standard	Tapered	Casing Set Depths				Casing Details					
	Hole Size	Top	Btm				Top MD	Bottom MD	Top TVD	BTM TVD	Grade	Weight	Thread	Collapse	Burst	Tension
Surface	17 1/2	0	585	13.375	API	No	0	575	0	575	J-55	54.5	BUTT	1.13	1.15	1.6
1st Intermediate	12 1/4	0	2780	9.625	API	No	0	2770	0	2770	J-55	40	BUTT	1.13	1.15	1.6
Production	8 3/4	2780	7810	5.5	NON API	No	0	7810	0	8399	P-110	20	TXP	1.13	1.15	1.6
Production	7 7/8	7810	15502	5.5	NON API	No	7810	15502	0	8379	P-110	20	TXP	1.13	1.15	1.6

Name	Type	Top MD	Sacks	Yield	Cu. Ft	Weight	Excess	Cement	Additives
Surface	Tail	0	592	1.35	799	14.8	100%	C	5% NCI + LCM
1st Intermediate	Lead	0	525	2.18	1145	12.7	65%	C	Bentonite + 1% CaCL2 + 8% NaCl + LCM
	Tail	1770	215	1.33	286	14.8	65%	C	5% NaCl + LCM
Production	Lead	0	620	2.73	1693	10.8	25%	TXI	Fluid Loss + Dispersant + Retarder + LCM
	Tail	7306	1235	1.48	1828	13.2	25%	H	Fluid Loss + Dispersant + Retarder + LCM

5. Mud Program

Electronic Pason mud monitor system complying with Onshore Order 1 will be used. All necessary mud products (e. g., barite, cedar bark) for weight addition and fluid loss control will always be on site. Mud program is subject to change due to hole conditions. A closed loop system will be used.

Name	Top	Bottom	Type	Mud Weight	Visc	Fluid Loss
Surface	0	575	FW Spud Mud	8.30	28	NC
Intermediate	575	2770	Brine Water	10.00	30-32	NC
Production	2770	15502	Oil Base Mud	9.00	30-45	<10



Drilling Operations Plan
 Money Graham Fed Com 126H
 Tap Rock Operating, LLC
 SHL 249' FSL & 1044' FEL, Sec. 32
 BHL 200' FNL & 990' FEL, Sec. 29
 T. 26-S., R. 29-E Eddy County, NM

Name	Top	Bottom	Type	Mud Weight	Visc	Fluid Loss
Surface	0	575	FW Spud Mud	8.30	28	NC
Intermediate	575	2770	Brine Water	10.00	30-32	NC
Production	2770	15502	Cut Brine	9.00	30-45	<10

6. Cores, Tests, & Logs

- Electric Logging Program: No open-hole logs are planned at this time for the pilot hole.
- GR will be collected while drilling through the MWD tools from 9.625" casing shoe to TD.
- A 2-person mud logging program will be used from 9.625" casing shoe to TD.
- No DSTs or cores are planned at this time.
- CBL w/ CCL from as far as gravity will let it fall to TOC.

7. Down Hole Conditions

No abnormal pressure or temperature is expected. Maximum expected bottom hole pressure is $\approx 3,921$ psi. Expected bottom hole temperature is $\approx 170^\circ$ F.

Tap Rock does not anticipate that there will be enough H₂S from the surface to the Bonespring formations to meet the BLM's Onshore Order 6 requirements for the submission of an "H₂S Drilling Operation Plan" or "Public Protection Plan" for drilling and completing this well. Tap Rock has an H₂S safety package on all wells and an "H₂S Drilling Operations Plan" is attached. Adequate flare lines will be installed off the mud/gas separator where gas may be safely flared. All personnel will be familiar with all aspects of safe operation of equipment being used.

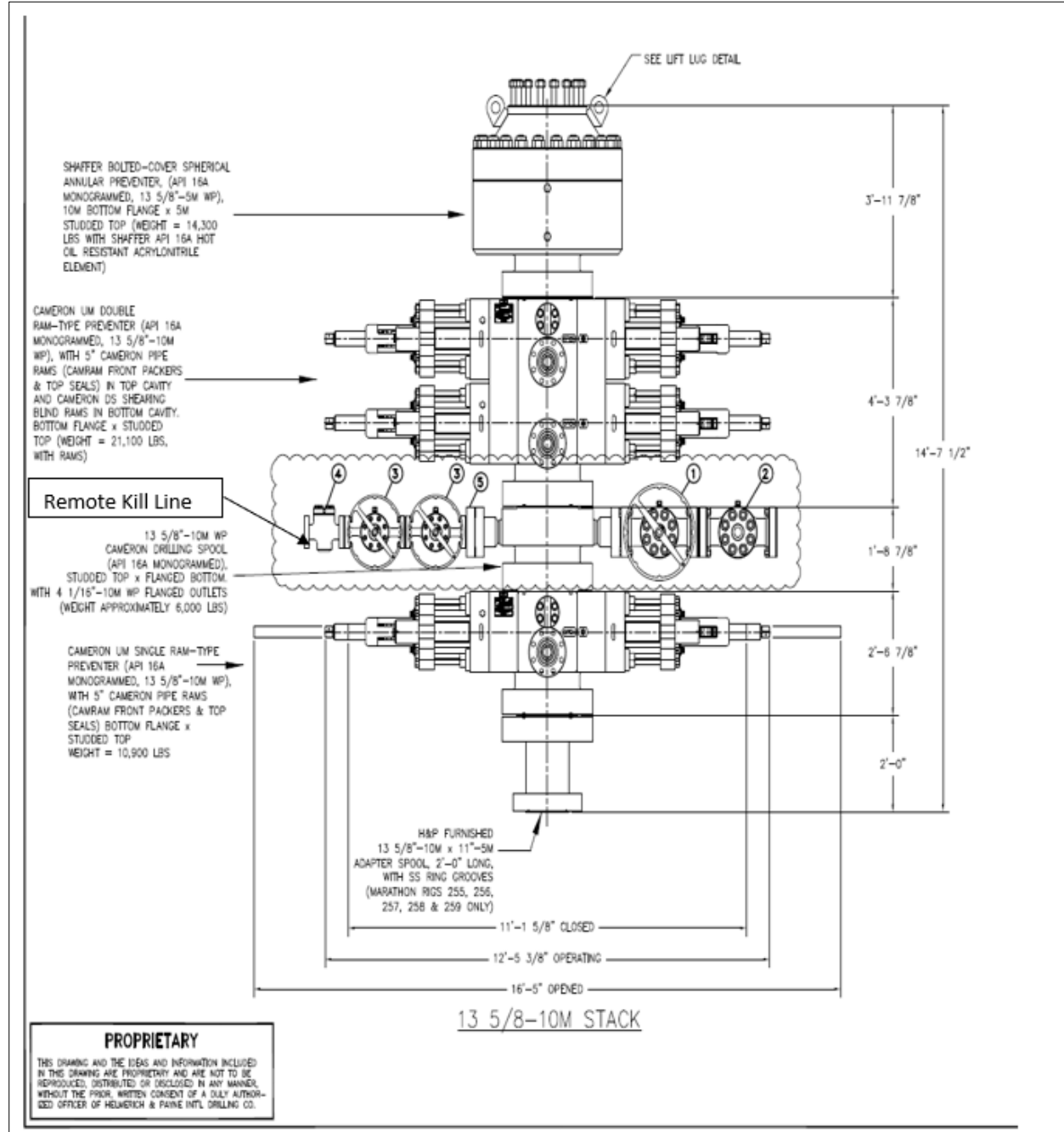
8. Other Conditions

Road and location construction will begin after BLM approval of APD. Anticipated spud date as soon as approved. Drilling expected to take 30 days. If production casing is run an additional 60 days will be required to complete and construct surface facilities.



Drilling Operations Plan
 Money Graham Fed Com 126H
 Tap Rock Operating, LLC
 SHL 249' FSL & 1044' FEL, Sec. 32
 BHL 200' FNL & 990' FEL, Sec. 29
 T. 26-S., R. 29-E Eddy County, NM

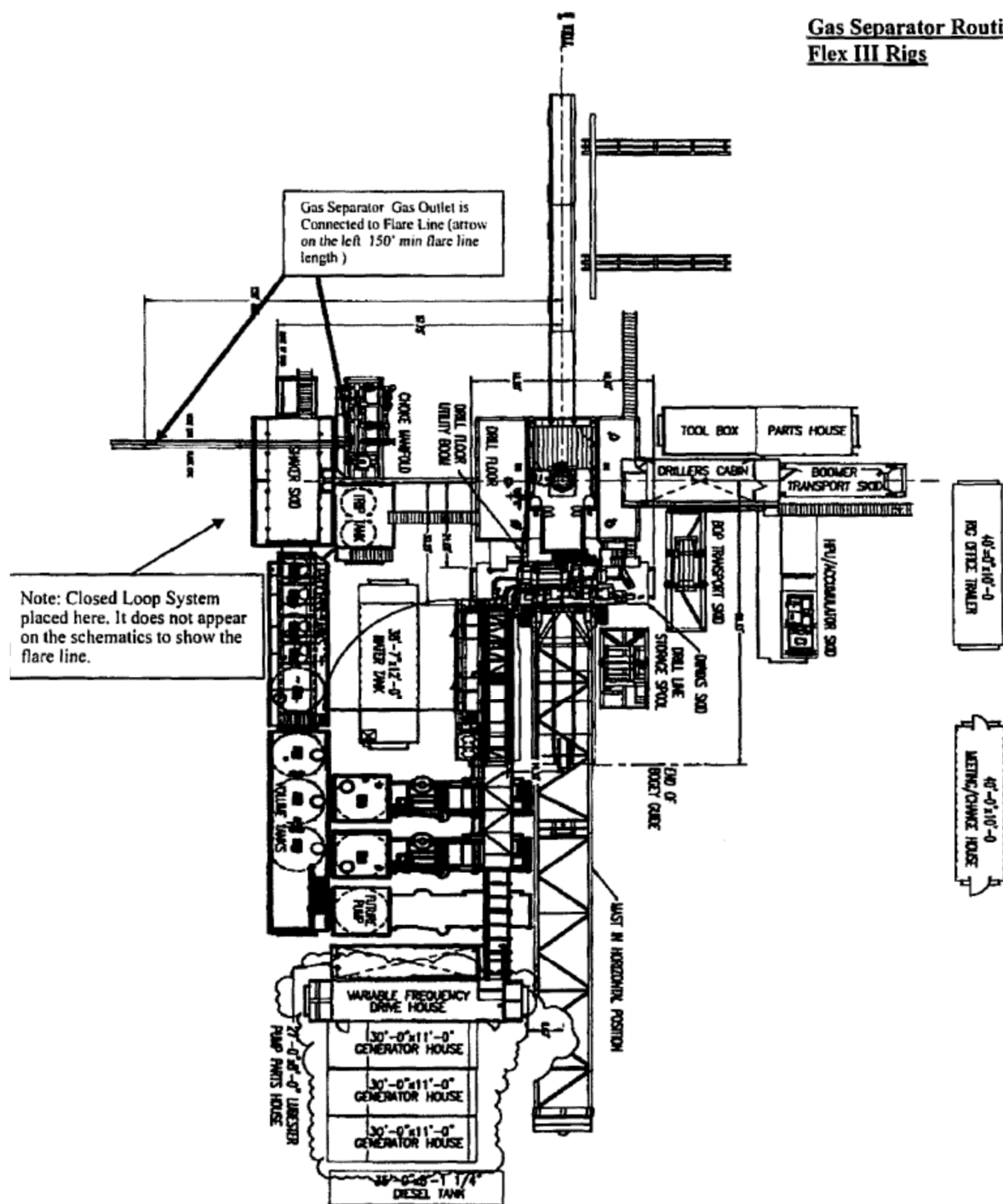
5,000 psi BOP Stack





Drilling Operations Plan
 Money Graham Fed Com 126H
 Tap Rock Operating, LLC
 SHL 249' FSL & 1044' FEL, Sec. 32
 BHL 200' FNL & 990' FEL, Sec. 29
 T. 26-S., R. 29-E Eddy County, NM

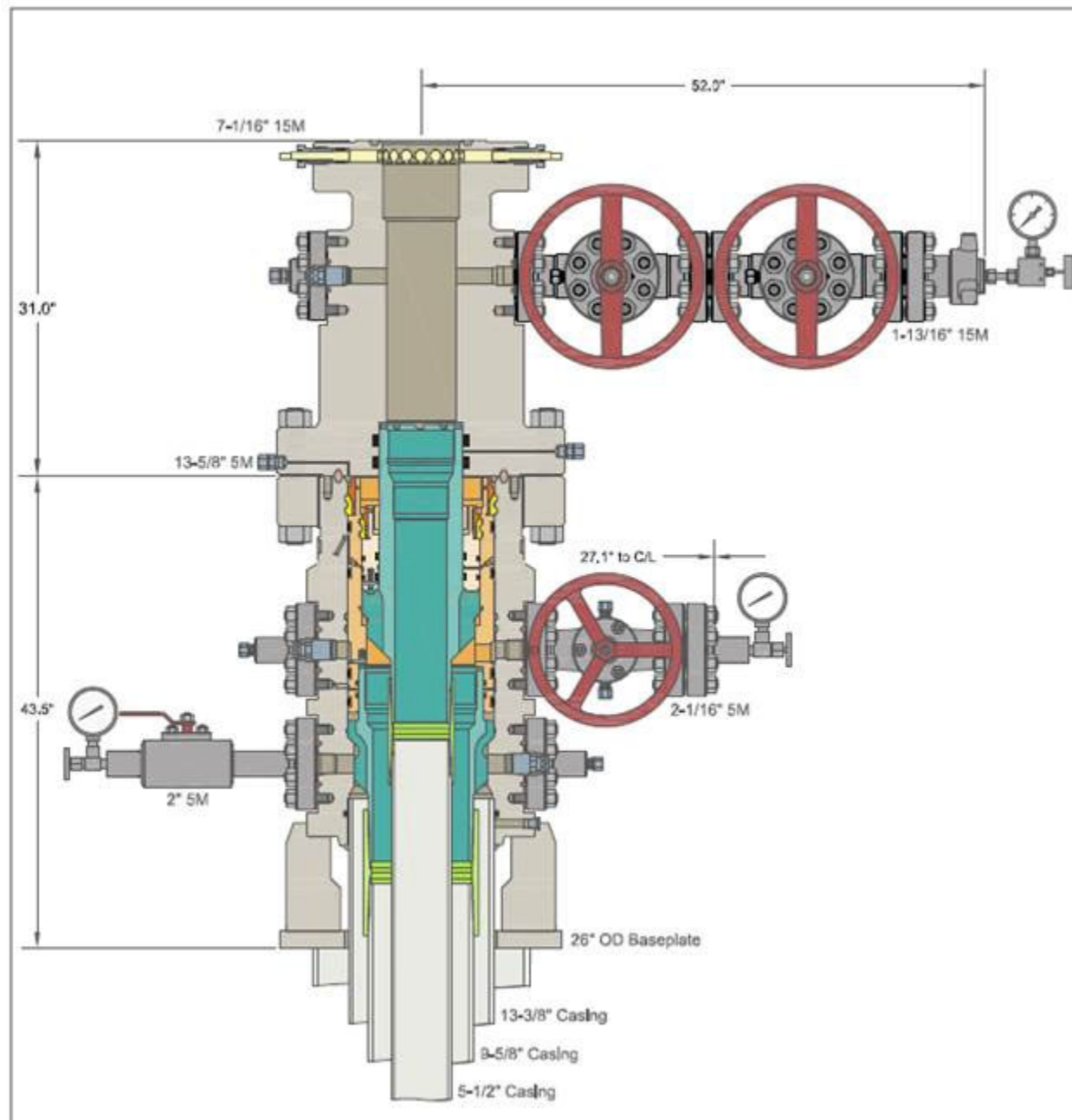
**Gas Separator Routing
 Flex III Rigs**





Drilling Operations Plan
Money Graham Fed Com 126H
Tap Rock Operating, LLC
SHL 249' FSL & 1044' FEL, Sec. 32
BHL 200' FNL & 990' FEL, Sec. 29
T. 26-S., R. 29-E Eddy County, NM

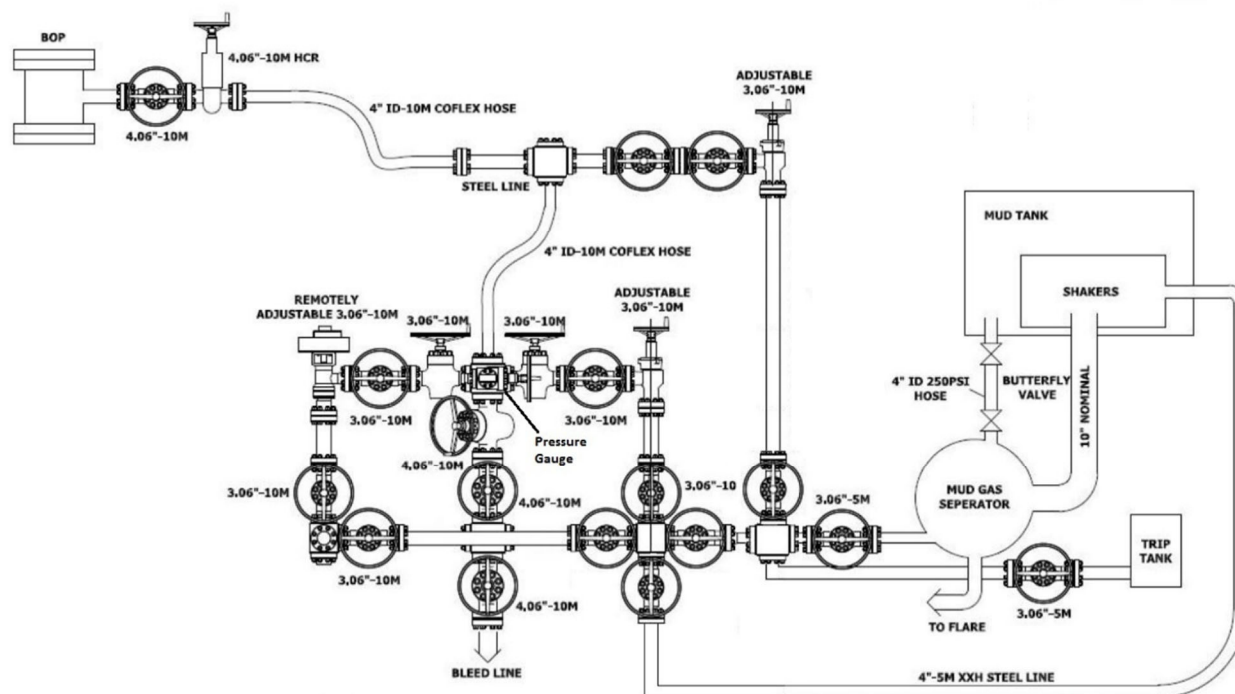
Multi-bowl Wellhead



10M Choke Layout



Drilling Operations Plan
Money Graham Fed Com 126H
Tap Rock Operating, LLC
SHL 249' FSL & 1044' FEL, Sec. 32
BHL 200' FNL & 990' FEL, Sec. 29
T. 26-S., R. 29-E Eddy County, NM



District I
1625 N. French Dr., Hobbs, NM 88240
Phone:(575) 393-6161 Fax:(575) 393-0720
District II
811 S. First St., Artesia, NM 88210
Phone:(575) 748-1283 Fax:(575) 748-9720
District III
1000 Rio Brazos Rd., Aztec, NM 87410
Phone:(505) 334-6178 Fax:(505) 334-6170
District IV
1220 S. St Francis Dr., Santa Fe, NM 87505
Phone:(505) 476-3470 Fax:(505) 476-3462

State of New Mexico
Energy, Minerals and Natural Resources
Oil Conservation Division
1220 S. St Francis Dr.
Santa Fe, NM 87505

CONDITIONS

Action 97655

CONDITIONS

Operator: TAP ROCK OPERATING, LLC 523 Park Point Drive Golden, CO 80401	OGRID: 372043
	Action Number: 97655
	Action Type: [C-103] NOI Change of Plans (C-103A)

CONDITIONS

Created By	Condition	Condition Date
jagarcia	None	7/26/2022