

Submit 1 Copy To Appropriate District Office
District I – (575) 393-6161
 1625 N. French Dr., Hobbs, NM 88240
District II – (575) 748-1283
 811 S. First St., Artesia, NM 88210
District III – (505) 334-6178
 1000 Rio Brazos Rd., Aztec, NM 87410
District IV – (505) 476-3460
 1220 S. St. Francis Dr., Santa Fe, NM 87505

State of New Mexico
 Energy, Minerals and Natural Resources

OIL CONSERVATION DIVISION
 1220 South St. Francis Dr.
 Santa Fe, NM 87505

Form C-103

Revised July 18, 2013

SUNDRY NOTICES AND REPORTS ON WELLS (DO NOT USE THIS FORM FOR PROPOSALS TO DRILL OR TO DEEPEN OR PLUG BACK TO A DIFFERENT RESERVOIR. USE "APPLICATION FOR PERMIT" (FORM C-101) FOR SUCH PROPOSALS.)		WELL API NO. 30-025-05226
1. Type of Well: Oil Well <input type="checkbox"/> Gas Well <input type="checkbox"/> Other SWD		5. Indicate Type of Lease STATE <input checked="" type="checkbox"/> FEE <input type="checkbox"/>
2. Name of Operator Fasken Oil and Ranch, Ltd		6. State Oil & Gas Lease No. B-9774
3. Address of Operator 6101 Holiday Hill Road, Midland, TX 79707		7. Lease Name or Unit Agreement Name Denton SWD
4. Well Location Unit Letter N : 660 feet from the South line and 1980 feet from the West line Section 2 Township 15S Range 37E NMPM County Lea		8. Well Number 5
11. Elevation (Show whether DR, RKB, RT, GR, etc.) 3798' GR		9. OGRID Number 151416
		10. Pool name or Wildcat SWD; Penn

12. Check Appropriate Box to Indicate Nature of Notice, Report or Other Data

NOTICE OF INTENTION TO:

PERFORM REMEDIAL WORK ☐ PLUG AND ABANDON ☐
 TEMPORARILY ABANDON ☐ CHANGE PLANS ☐
 PULL OR ALTER CASING ☐ MULTIPLE COMPL ☐
 DOWNHOLE COMMINGLE ☐
 CLOSED-LOOP SYSTEM ☐
 OTHER: ☐

SUBSEQUENT REPORT OF:

REMEDIAL WORK ☐ ALTERING CASING ☐
 COMMENCE DRILLING OPNS. ☐ **P AND A** ☒
 CASING/CEMENT JOB ☐ PNR
 OTHER: ☐

13. Describe proposed or completed operations. (Clearly state all pertinent details, and give pertinent dates, including estimated date of starting any proposed work). SEE RULE 19.15.7.14 NMAC. For Multiple Completions: Attach wellbore diagram of proposed completion or recompletion.

Fasken Oil and Ranch, Ltd has plugged and abandoned well. Attached is the performed procedure.

Spud Date:

Rig Release Date:

I hereby certify that the information above is true and complete to the best of my knowledge and belief.

SIGNATURE Viola Vasquez TITLE Regulatory Analyst DATE 02/08/2022

Type or print name Viola Vasquez E-mail address: violav@forl.com PHONE: 432-687-1777

For State Use Only

APPROVED BY: Kerry Fortner TITLE Compliance Officer A DATE 8/1/22
 Conditions of Approval

Fasken SWD
Daily Operations Report
(All Event Days)
10/1/2021 thru 2/8/2022

Page 1
Printed 2/8/2022

Denton SWD # 5

Event Date: 10/18/2021

Lea Co., NM

Well ID: DE5600-D5

AFE # ~~4930~~

Plug and Abandon.

Oct 18, 2021 Monday Day 1

SICP-0 psi. Contractor delivered and set 2 TWS rig mats and RUPU (Standard #41). Called State of NMOC and talked to Terry Fortner @9:30 (CT) and informed him plugging operations would start this morning. ND capping flange and NU 5K hydraulic BOP w/ function tested. Contractor delivered and set 2 sets of Nevaeh pipe racks and catwalk and unloaded 183 jts of 2-3/8" J55 4.7# EUE 8rd tbg from Fasken pipe yard. Cleaned tubing threads and tallied tbg. Contractor delivered and set TWS 250 bbl gas buster and 500 bbl frac tank. Removed thread protectors, cleaned tubing threads w/ varsol and installed clean protectors and tallied tubing. SWI and SDON. (JRD)

AFE Cum. Cost:

Daily Cost:

Im. Cost:

AFE Amount:

Oct 19, 2021 Tuesday Day 2

SICP- 0 psi, SIICP- 1000 psi and SISCIP- 0 psi. RIW with 2-3/8" seating nipple and 182 jts 2-3/8" J55 workstring and tagged TOF at 5744', LD 1 jt and installed 8' pup jt with EOT at 5740'. RU Petroplex cement pump, tested lines to 2000 psi and established circulation with 4 bbw. Mixed and pumped 50 bbls mud laden bw and spotted with 17 bbw and SD pump. POW with 181 jts 2-3/8" J55 workstring and RIW with 2-3/8" x 4' perforated sub, SN, 87 jts 2-3/8", 7" AD1 packer and found packer would not go through completion spool. Waited on rental spool for 30", ND BOP and 11" 3000 x 7-1/16" 3000 completion spool and NU rental spool and BOP. Finished RIW with 7" AD 1 packer and tubing, attempted to set packer at 1225' without success, packer caught casing collar at 1213' and set. POW with 1 jt tubing and installed 20' of 2-3/8" pup jts with 20K tension on packer. RU cement pump and loaded tubing/casing annulus with 3 bbw and pressure tested to 500 psi, with a leak on BOP. Tightened BOP bolts and pressure tested to 500 psi, okay. Bled down pressure and SWI and SDON. (SRF)

AFE Cum. Cost:

Daily Cost:

Im. Cost:

AFE Amount:

Oct 20, 2021 Wednesday Day 3

SICP- 0 psi, SIICP- 1000 psi and SISCIP-0 psi. Notified Kerry Fortner with NMOC via text message of completed operations on 10-19-21 at 7:40 am CDT 10-20-21. RU RTX WL and RIW with 1-11/16" strip gun and set down at 1270' with AD1 packer at 1216' and could work guns below 1270'. POW and found some pipe scale on charges. Removed charges and RIW with 1-11/16" gauge ring, spang jars and set down at 1270' and could not work deeper. POW with WL and found gauge ring with one shiny spot on bottom edge, RIW with 3/4" pick and could not work past 1270' and POW. Made up 1-1/2" OD spang jars on rope socket with 1-1/2" x-o and RIW to 4070' with EOT at 3998' WL depth and POW with same. Saw slight weight loss when passed through spot at 1270' while RIW. Ordered 1-7/16" strip guns, de-centralizer and deep penetrating charges. Waited on 1-9/16" deep penetrating RTG until 2 pm CDT. Made up guns and RIW with 1-9/16" guns with 3' 1.5" weight bar and set down at 1270' and could not work guns deeper. POW with WL, broke down tools and made up same guns with 8' of 1" weight bars and RIW through tight spot at 1270' with slight drag. RIW with CCL to 4641.30' and top shot at 4650', pressured tubing to 500 psi and fired gun and tubing pressure increased to 1400 psi. POW and RDWL

Fasken SWD**Daily Operations Report**

(All Event Days)

10/1/2021 thru 2/8/2022

Page 2

Printed 2/8/2022

with all shots fired. Bled down 9-5/8" x 7" annulus to half pit instantly, RU cement pump on tubing and attempted a pump in rate at .5 bpm and 1850 psi. Notified Midland office and continued pump in rate test while WOO. Pumped 12 bbw total with .5 bpm rate and 2000 psi ending pressure. Received orders to flow tubing to gas buster on choke overnight. RD Petroplex cement pump and RU positive choke on tubing and opened tubing with 1700 psi on 10/64" at 5:20 pm. Well flowed 22 bw in 1 hr with FTP-1350 psi on 10/64" choke. Schedule truck to haul one load of water from flowback tank tonight. Left well flowing to flowback tank and SDON. (SRF)

AFE Cum. Cost:

Daily Cost:

Cum. Cost:

AFE Amount:

Oct 21, 2021 Thursday Day 4

FTP- 1650 psi, SICP- 600 psi, SIICP- 1000 psi and SISCN- 0 psi. Notified Kerry Fortner with NMOCD via text message of completed operations on 10-20-21 at 8:14 am CDT 10-21-21. Stone Trucking hauled 140 bw from flowback tank overnight with current tank gauge 0". Found 10/64" positive choke completely plugged with what appears to be salt. Installed 12/64" positive choke and opened well at 8:55 am CDT to flowback tank with FTP- 1350 psi. 9:55 am, FTP- 1200 psi on 12/64" positive choke and recovered 22 bw. 10:40 am, choke plugged off again, was able to use fresh water to clean choke after soaking for 30". Left well SI while WOO until 2:30 pm CDT with SITP- 1650 psi. SWI and SDON. (SRF)

AFE Cum. Cost:

Daily Cost:

Cum. Cost:

AFE Amount:

Oct 22, 2021 Friday Day 5

FTP-1650 psi, SICP- 500 psi, SIICP- 1100 psi and SISCN-0 psi. RU Petroplex cement pump on tubing, pumped 25 bfw at .8 bpm and 2200-2800 psi, mixed and pumped 45 sx class C cement w/ .7% C15 fluid loss and .3% C20 retarder (s.w. 14.8 ppg, yield 1.32 cuft/sk) and displaced cement with 4 bfw spacer and 30 bbw. ISDP-2000 psi. Shut in tubing and bled down casing pressure. Washed up pump and lines and RD Petroplex cement equipment. SWI and SDON. Notified Kerry Fortner with NMOCD via text message of completed operations on 10-22-21 at 12:30 pm CDT 10-22-21. (SRF)

AFE Cum. Cost:

Daily Cost:

Cum. Cost:

AFE Amount:

Oct 23, 2021 Saturday Day 6

No activity. (SRF)

AFE Cum. Cost:

Daily Cost:

Cum. Cost:

AFE Amount:

Oct 24, 2021 Sunday Day 7

No activity. (SRF)

AFE Cum. Cost:

Daily Cost:

Cum. Cost:

AFE Amount:

Oct 25, 2021 Monday Day 8

Fasken SWD**Daily Operations Report**

(All Event Days)

10/1/2021 thru 2/8/2022

Page 3

Printed 2/8/2022

SITP-1450 psi, SICP-500 psi. Bled down tubing and casing pressure to gas buster. Released AD-1 packer and well was static. POW w/ 38 jts 2-3/8" J-55 EUE 8rd tubing and LD AD-1 packer. RIW w/ perf sub and 2-3/8" tbg and tagged TOC at 4372'. Called Terry Fortner w/ NMOC and received approval to proceed to the next step. POW and LD 140 jts 2 3/8" J-55 EUE 8rd tubing. RIW w/ 4' x 2 3/8" perf sub, 3 jts of 2-3/8" J55 EUE 8rd tubing, 7" AD1 packer and 2-3/8" SN. RIW w/ 39 jts 4.7# J-55 EUE 8rd tubing and 22' of 2-3/8" tubing subs. Set AD1 packer @ 1228' w/ 30 pts tension w/ EOT @ 1329'. Loaded tbg/csg annulus w/ 7.5 bbls of 9.5 ppg mud laden brine. Pressured up on casing to 500 psi and held for 15 min w/ 0 pressure loss. SWI and SDON. (JRS)

AFE Cum. Cost:

Daily Cost:

n. Cost:

AFE Amount:

Oct 26, 2021 Tuesday Day 9

SICP-0 psi, SITP-0 psi. RU Petro-Plex pump truck and pressured tbg/csg annulus to 500 psi. Called Terry Fortner w/ NMOC on plans for the day. RU RTX WL truck w/ 3K lubricator and RIW w/ 1-11/16" drain hole gun and sat down at 1270' (same depth as previous run). POW and LD 1-11/16" drain gun and waited 1 hour on weight weight to be delivered. RIW w/ 1-11/16" drain gun w/ weight weight bars and guns failed to fire. POW and replace guns. RIW and perforated 7" casing @ 3100' and pressure increased to 1450 psi after perforating. POW and RD wire line. RU PetroPlex cement pump and tested lines to 3500 psi w/ no visual leaks. Established injection rate w/ 10 bfw @ 0.5 BPM w/ 3000 psi. ISIP @ 2300 psi, 5 minute SIP @ 1550 psi and 10 minute SIP @ 1550 psi. Monitored CP @ 500 psi and 7" x 9-5/8" had a slight trickle to pit. Waited 1.5 hrs on 5 hr set up cement blend. Pumped 25 bfw at .4 bpm w/ 2750 - 3000 psi, mixed and pumped 45 sx Class C cement w/ .7% C15 fluid loss and .3% C20 retarder (s.w. 14.8 ppg, yield 1.32 cuft/sk). Displaced cement with 5 bfw spacer and 67.3 mud laden fluid to 2950'. At 50 bbls of displacement pump pressure dropped to 800 psi w/ 1.5 BPM. ISDP-400 psi, 5 minute SIP @ 1200 psi w/ CP @ 1200 psi. Casing annulus pressure increased to 1500 psi. Washed up pump and lines and RD Petroplex cement equipment. SWI and SDON. Notified Terry Fortner with NMOC via text message of completed operations on 10-26-21 at 6:30 pm CDT 10-26-21. (JRS)

AFE Cum. Cost:

Daily Cost:

Cum. Cost:

AFE Amount:

Oct 27, 2021 Wednesday Day 10

SITP-1200 psi, SICP- 900 psi, SIICP- 200 psi and SISCIP-0 psi. RU RTX WL and bled down tubing pressure, RIW with 1" weight bars on 1-7/16" CCL and tagged TOC at 2900' FS. POW and notified Kerry Fortner at NMOC Hobbs office, received approval to continue with P&A operations. Released 7" AD1 packer and POW with +/- 220' tubing and packer hung up, worked packer past tight spot at +/-1005' and hung up again at +/-975' and could not work past this spot. RIW and reset packer at 1225' and pressured tubing/casing annulus to 600 psi and monitored pressure during job. RIW with 1-9/16" RTG and decentralizer, trapped 1000 psi on tubing and perforated 7" casing at 2000'. Had 400 psi increase after perforating and POW with WL. RU on tubing and established pump in rate of 1 bpm and 1770 psi with 10 bfw, mixed and pumped 55 sx Class C cement with .7% C15 (fluid loss), .3% C20 (retarder) (s.w. 14.8 ppg, yield 1.32 cuft/sk) at 1 bpm and 1100 psi and displaced cement with 5 bfw spacer and 20 bbls mud laden bw. Pressure broke back to 1 bpm and 550 psi with 11 bbls of displacement pumped, pressure fluctuated for the remainder of the displacement from 550-1200 psi while 9-5/8" x 7" annulus surged to gas buster pit. ISDP- 1200 psi, 7" x 2-3/8" annulus- 650 psi, 9-5/8" x 7" annulus- 500 psi and surface casing- 0 psi. Washed up pump and lines and SWI and SDON. Notified Kerry

Fasken SWD**Daily Operations Report**

(All Event Days)

10/1/2021 thru 2/8/2022

Page 4

Printed 2/8/2022

Fortner with NMOCD Hobbs office of today's progress at 1:05 pm CDT. SWI and SDON. (SRF)

AFE Cum. Cost:

Cost:

Cost:

AFE Amount:

Oct 28, 2021 Thursday Day 11

SITP-750 psi, SICP- 750 psi, SIICP- 1500 psi and SISCOP-0 psi. Bled down intermediate casing pressure and flowed heavy drilling mud for 10", shut in intermediate casing and bled down tubing and tubing/casing annulus with no flow. Intermediate casing pressure built up to 1000 psi in 2". Notified Kerry Fortner with NMOCD Hobbs office of current well status at 8:22 am CDT. Received instructions to perforate 7" casing at 1200' and squeeze with 60 sx cement. Attempted to release AD1 packer for 15" without success and attempted to shear packer for 5" up 70K without success. RUWL and RIW and free pointed tubing, found packer 100% stuck at 1228' and 100% free at 1222', POW with WL. Notified Kerry Fortner with NMOCD and was advised that flow from 9-5/8" x 7" annulus needs to be shut off before perforating and circulating surface plug. NMOCD did not object to leaving packer in the well if needed. Attempted to release safety sub on top of AD1 packer without success. RUWL and RIW with 1-11/16" Jet cutter, pulled 12K tension on tubing and cut tubing 5' above packer at 1223'. Left 2-3/8" x 4' perforated sub, 2-3/8" SN, 3 jts 2-3/8" 4.7# EUE 8rd J55 jts, x-o, 7" x 2-7/8" AD1 packer, x-o and 2-3/8" x 5' tubing stub on top of packer. POW and RDWL. POW and stood back 20 jts and LD 18 jts and 1 cut off jt 2-3/8" J55 tubing (total length=109.70'). RIW with 32A tension packer and 20 jts 2-3/8" J55 tubing and set packer at 644'. RU Petroplex Cement pump and loaded tubing/casing annulus with 3 bbw and trapped 600 psi. RUWL and RIW with 1-9/16" RTG gun with decentralizer and attempted to pressure up pack off and hydraulic hose busted on pack off. POW with WL and replaced hose, RIW with WL and pressured tubing to 1200 psi. Perforated 7" casing at 1200' FS and had very little change in tubing pressure after perforating. POW and RDWL. RU Petroplex cement pump on tubing and attempted to establish rate into squeeze holes with 9-5/8" x 7" annulus closed and tubing pressured up to 2500 psi, kicked out pump and found 2500 psi on 9-5/8" x 7" annulus valve. Bled down pressure and opened 9-5/8" x 7" annulus to gas buster pit and bled down with heavy drilling mud to pit. Established pump rate of .8 bpm at 300 psi with 5 bfw, mixed and pumped 100 sx Class C neat cement (s.w. 14.8 ppg, yield 1.32 cuft/sk) at 2.0 bpm and 700 psi and displaced with 5 bfw spacer and 14.9 bbw at 2.0 bpm and 700-1100 psi. Slowly closed 9-5/8" x 7" casing valve for last 1 bbl of displacement pumped. ISDP-1100 psi, 7" x 2-3/8" annulus- 750 psi, 9-5/8" x 7" annulus- 1100 psi and SISCOP-0 psi. Washed up pump and lines, hauled 1 load of water to public disposal and 1 load to solids disposal. SWI and SDON. (SRF)

AFE Cum. Cost:

Daily Cost:

n. Cost:

AFE Amount:

Oct 29, 2021 Friday Day 12

SITP-200 psi, SICP- 550 psi, SIICP- 80 psi and SISCOP-0 psi. Bled down intermediate casing pressure with no flow, bled down tubing and tubing/casing annulus with no flow. Monitored all sides for 30" with no flow. Notified Kerry Fortner with NMOCD Hobbs office and FORL Midland office of current well status at 8:40 am CDT. Received approval to continue with P&A procedure. Released 32A packer, RU Petroplex cement pump and pumped 12 bbls mud laden bw down tubing with returns to gas buster pit. POW and LD 20 jts 2-3/8" tubing and 7" 32A tension packer. ND BOP and rental spool and NU completion spool and adapter flange. RU RTX WL, and RIW with 1-11/16" strip gun to 350', loaded 7" casing with 1 bbw and pressured to 200 psi. Perforated 7" casing at 350' FS with 100 psi loss, POW and RDWL. Established pump in rate with 5 bfw at 2 bpm and 400 psi via 7"

Fasken SWD**Daily Operations Report**

(All Event Days)

10/1/2021 thru 2/8/2022

Page 5

Printed 2/8/2022

casing with full returns from 9-5/8"x 7" annulus to gas buster pit, mixed and pump 110
 sx cl C cement (s.w. 14.8 ppg, yield 1.32 cuft/sk) with good cement returns to gas
 buster pit and shut down pump. Washed up pump and lines and RD Petroplex cement pump.
 Crew cleaned location and RDPU. Left well shut in waiting for cut off and dry hole
 marker installation. Tex Mex vacuum trucks worked to wash out gas buster pit and hauled
 1 load to solid disposal. Released all rental equipment. WELL PLUGGED, WAITING ON WH
 CUT OFF. (SRF)

AFE Cum. Cost:

Daily Cost:

Cum. Cost:

AFE Amount:

Oct 30, 2021 Saturday Day 13

Tex-Mex attempted to wash out gas buster, hauled 1 load solids to Sundance disposal and
 emptied frac tank. (SRF)

AFE Cum. Cost:

Daily Cost:

m. Cost:

AFE Amount:

Oct 31, 2021 Sunday Day 14

WELL PLUGGED, WAITING ON WH CUT OFF. (SRF)

AFE Cum. Cost:

Daily Cost:

m. Cost:

AFE Amount:

Nov 4, 2021 Thursday Day 15

Contractor cut off well head and welded plate onto casing. Installed 1" 2000 psi valve
 on top of plate, closed valve and removed handle. Filled bottle w/ grease and placed
 over valve. Installed dry hole marker on 13 3/8" casing stud with well information per
 NMOCD requirements. Backhoe backfilled hole and covered casing. Removed mast anchors
 and cleaned up location. Notified Kerry Fortner (NMOCD) via text message. WELL PLUGGED
 AND ABANDONED. FINAL REPORT. (JRS)

AFE Cum. Cost:

Daily Cost:

Cum. Cost:

AFE Amount:

Report Based On:

Date Range: 10/1/2021 through 2/8/2022

Wells selected based on the following Report Menu selections:

Wells = Denton SWD # 5.

Well: Denton SWD No. 5 (formerly State T No. 1)**Operator:** Fasken Oil and Ranch, Ltd.**Location:** 660' FSL and 1980' FWL

Sec 2, T15S, R37E

Lea County, NM

Spud: 1/13/1951**API #:** 30-025-05226**TD:** 12,730'**PBTD:** cmt retainer @ 10,200'**Casing:** 13-3/8" 48# set at 294.37'

cmt w/ 350 sx, cmt circ to surface

TOC surf

9-5/8" 36# & 40# set at 4595.64'

cmt w/ 3000 sx, cmt circ to surface

TOC surf

7" 23#, 26#, 29#, 32# set at 12,729.28'

cmt w/ 950 sx, TOC 9640' per temp survey

perf 7" 2 holes at 9200', 4 squeezes (300 sx + 150 sx + 50 sx + 50 sx)

Perforations: Devonian (inactive)

12,522'-72'

12,422'-72'

12,060'-80'

12,017'-30'

11,963'-84'

11,902'-28'

11,675'-11,846'

Wolfcamp (inactive)

9057'-92' (1 jspl)

Penn

10,042'-10,148' (gross, 2 jspl, 122 holes)

9844'-10,028' (gross, 2 jspl, 172 holes)

9660'-9822' (gross, 2 jspl, 180 holes)

CIBPs:

12,502' (dump ball 10' cmt on top)

12,355' (dump ball 10' cmt on top)

8990'

Hole Sizes:

17-1/2" Surf-300'

12-1/4" 300'-4610'

8-3/4" 4610'-12,730'

Activity:

9/16/1971- drill out Mod D pkr at 11,800' and perforate Upper Devonian (11,675'-11,846')

1/22/1972- squeeze perfs 11,675'-846' w/ 270 sx cmt to 6200 psi, drill out and test to 1500 psi, OK

Perf 11,891'-92' w/ 4 holes for block squeeze of channel behind 7" casing

Squeeze perfs 11,675'-846' broke down during block squeeze

4/1/1974- set cmt retainer at 11,543'. Squeeze perfs 11,675'-846' in 3 stgs using 2000 bbls Injectrol

400 sx "H" + 250 sx "C". squeeze to 3000 psi. **Devonian P&A on 4/6/1974**

Perf 4 holes at 9401'. Unable to pump into perfs at 4000 psi.

Set 7" CIBP at 9180'. Perforate Wolfcamp 9057'-92' gross. Acidize w/ 1000 gals 15%

10/22/1986- SWI pending further evaluation (Wolfcamp prod 10 BOPD + 221 BWPD)

9/23/1997- Fish tubing and TAC. Set pkr at 8850', test annulus to 500 psi, OK. Squeeze Wolfcamp perfs

9057'-92' w/ 75 sx "C" to max pressure 3500 psi. Drill out and RIW to 11,507'. Test

casing from surface to 11,507' to 1000 psi, OK. Ran CBL from 10,500' to 8500'

Bad cmt from 10,500' up to 9800'. Perf 7" at 10,225' and set cmt retainer at 10,200'

Squeeze under retainer w/ 50 sx "H"

Perf Penn 2 jspl 10,042'-10,148' gross (122 holes). Acidize w/ 3000 gals 15% w/ 140 BS. ISIP 798 psi

Perf Penn 2 jspl 9844'-10,028' gross (172 holes). Acidize w/ 4000 gals 15% w/ 175 BS. ISIP 380 psi

Perf Penn 2 jspl 9660'-9822' gross (180 holes). Acidize w/ 4000 gals 15% w/ 185 BS. ISIP vac

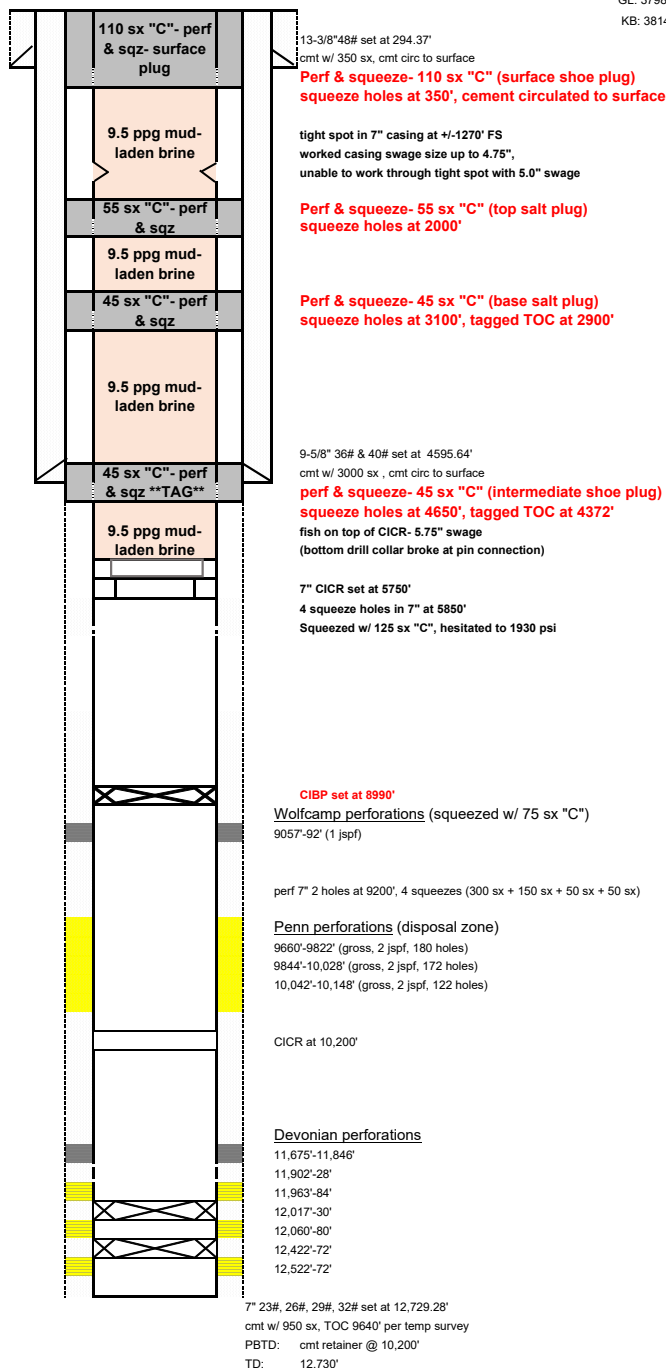
RIW w/ Baker Mod 47B-2 Lokset pkr (2.44" ID profile) w/ 4-1/2" 11.6# K-55 LT&C (TK70 + TK15)

11/27/1997- first injection into Penn- 7600 BWPD rate, 900 psi

as of 2/10/2022

GL: 3798'

KB: 3814'



District I
1625 N. French Dr., Hobbs, NM 88240
Phone:(575) 393-6161 Fax:(575) 393-0720
District II
811 S. First St., Artesia, NM 88210
Phone:(575) 748-1283 Fax:(575) 748-9720
District III
1000 Rio Brazos Rd., Aztec, NM 87410
Phone:(505) 334-6178 Fax:(505) 334-6170
District IV
1220 S. St Francis Dr., Santa Fe, NM 87505
Phone:(505) 476-3470 Fax:(505) 476-3462

State of New Mexico
Energy, Minerals and Natural Resources
Oil Conservation Division
1220 S. St Francis Dr.
Santa Fe, NM 87505

COMMENTS

Action 79485

COMMENTS

Operator: FASKEN OIL & RANCH LTD 6101 Holiday Hill Rd Midland, TX 79707	OGRID: 151416
	Action Number: 79485
	Action Type: [C-103] Sub. Plugging (C-103P)

COMMENTS

Created By	Comment	Comment Date
plmartinez	DATA ENTRY PM	8/2/2022

District I
1625 N. French Dr., Hobbs, NM 88240
Phone:(575) 393-6161 Fax:(575) 393-0720
District II
811 S. First St., Artesia, NM 88210
Phone:(575) 748-1283 Fax:(575) 748-9720
District III
1000 Rio Brazos Rd., Aztec, NM 87410
Phone:(505) 334-6178 Fax:(505) 334-6170
District IV
1220 S. St Francis Dr., Santa Fe, NM 87505
Phone:(505) 476-3470 Fax:(505) 476-3462

State of New Mexico
Energy, Minerals and Natural Resources
Oil Conservation Division
1220 S. St Francis Dr.
Santa Fe, NM 87505

CONDITIONS

Action 79485

CONDITIONS

Operator: FASKEN OIL & RANCH LTD 6101 Holiday Hill Rd Midland, TX 79707	OGRID: 151416
	Action Number: 79485
	Action Type: [C-103] Sub. Plugging (C-103P)

CONDITIONS

Created By	Condition	Condition Date
kfortner	Need C103Q and marker pics to release	8/1/2022