

Well Name: SAKER 6-7 FEDERAL COM	Well Location: T24S / R35E / SEC 6 / LOT 3 /	County or Parish/State:
Well Number: 36H	Type of Well: OIL WELL	Allottee or Tribe Name:
Lease Number: NMNM14164	Unit or CA Name:	Unit or CA Number:
US Well Number: 3002548937	Well Status: Approved Application for Permit to Drill	Operator: OXY USA INCORPORATED

Notice of Intent

Sundry ID: 2628027

Type of Submission: Notice of Intent	Type of Action: Other
Date Sundry Submitted: 08/09/2021	Time Sundry Submitted: 09:09
Date proposed operation will begin: 09/14/2022	

Procedure Description: OXY USA Inc. respectfully requests approval to amend the pool name, casing/cement program, BOP break testing language, and mud programs in the APD for the subject well. Attached is the updated C-102 plat, drill plan, and directional plan/plot.

Surface Disturbance

Is any additional surface disturbance proposed?: No

NOI Attachments

Procedure Description

- Saker6_7FedCom36H_DrillPlan_Sundry8.9.21_20210809210810.pdf
- Saker6_7FedCom36H_DirectPlot_Sundry8.9.21_20210809210806.pdf
- Saker6_7FedCom36H_DirectPlan_Sundry8.9.21_20210809210806.pdf
- Saker6_7FedCom36H_C102_Sundry8.9.21_20210809210804.pdf

Well Name: SAKER 6-7 FEDERAL COM	Well Location: T24S / R35E / SEC 6 / LOT 3 /	County or Parish/State:
Well Number: 36H	Type of Well: OIL WELL	Allottee or Tribe Name:
Lease Number: NMNM14164	Unit or CA Name:	Unit or CA Number:
US Well Number: 3002548937	Well Status: Approved Application for Permit to Drill	Operator: OXY USA INCORPORATED

Conditions of Approval

Additional

SAKER_6_7_FED_COM_36H___SUNDRY_COA_20220627142917.pdf

Operator

I certify that the foregoing is true and correct. Title 18 U.S.C. Section 1001 and Title 43 U.S.C. Section 1212, make it a crime for any person knowingly and willfully to make to any department or agency of the United States any false, fictitious or fraudulent statements or representations as to any matter within its jurisdiction. Electronic submission of Sundry Notices through this system satisfies regulations requiring a

Operator Electronic Signature: RONI MATHEW

Signed on: AUG 09, 2021 09:08 PM

Name: OXY USA INCORPORATED

Title: REGULATORY SPECIALIST

Street Address: 5 Greenway Plaza, Suite 110

City: Houston **State:** TX

Phone: (713) 215-7827

Email address: RONI_MATHEW@OXY.COM

Field

Representative Name: JIM WILSON

Street Address: 6001 DEAUVILLE BLVD.

City: MIDLAND **State:** TX **Zip:** 79710

Phone: (575)631-2442

Email address: JIM_WILSON@OXY.COM

BLM Point of Contact

BLM POC Name: CHRISTOPHER WALLS

BLM POC Title: Petroleum Engineer

BLM POC Phone: 5752342234

BLM POC Email Address: cwalls@blm.gov

Disposition: Approved

Disposition Date: 07/28/2022

Signature: Chris Walls

PECOS DISTRICT DRILLING CONDITIONS OF APPROVAL

All previous COAs still apply.

OPERATOR'S NAME:	OXY USA INC.
LEASE NO.:	NMNM14164
WELL NAME & NO.:	SAKER 6-7 FEDERAL COM 36H
SURFACE HOLE FOOTAGE:	200'N & 2030'W
BOTTOM HOLE FOOTAGE:	20'S & 2301'W
LOCATION:	Section 6, T.24 S., R.35 E., NMP
COUNTY:	Lea County, New Mexico

COA

H2S	<input checked="" type="radio"/> Yes	<input type="radio"/> No	
Potash	<input checked="" type="radio"/> None	<input type="radio"/> Secretary	<input type="radio"/> R-111-P
Cave/Karst Potential	<input checked="" type="radio"/> Low	<input type="radio"/> Medium	<input type="radio"/> High
Cave/Karst Potential	<input type="radio"/> Critical		
Variance	<input type="radio"/> None	<input checked="" type="radio"/> Flex Hose	<input type="radio"/> Other
Wellhead	<input type="radio"/> Conventional	<input checked="" type="radio"/> Multibowl	<input type="radio"/> Both
Other	<input type="checkbox"/> 4 String Area	<input type="checkbox"/> Capitan Reef	<input type="checkbox"/> WIPP
Other	<input type="checkbox"/> Fluid Filled	<input checked="" type="checkbox"/> Cement Squeeze	<input type="checkbox"/> Pilot Hole
Special Requirements	<input type="checkbox"/> Water Disposal	<input checked="" type="checkbox"/> COM	<input type="checkbox"/> Unit

A. CASING

Alternate Casing Design:

1. The **10-3/4** inch surface casing shall be set at approximately **900** feet (a minimum of **25 feet (Lea County)** into the Rustler Anhydrite and above the salt) and cemented to the surface.
 - a. If cement does not circulate to the surface, the appropriate BLM office shall be notified and a temperature survey utilizing an electronic type temperature survey with surface log readout will be used or a cement bond log shall be run to verify the top of the cement. Temperature survey will be run a minimum of six hours after pumping cement and ideally between 8-10 hours after completing the cement job.
 - b. Wait on cement (WOC) time for a primary cement job will be a minimum of **8 hours** or 500 pounds compressive strength, whichever is greater. (This is to include the lead cement)
 - c. Wait on cement (WOC) time for a remedial job will be a minimum of 4 hours

after bringing cement to surface or 500 pounds compressive strength, whichever is greater.

- d. If cement falls back, remedial cementing will be done prior to drilling out that string.
2. The 7-5/8 inch intermediate casing shall be set at approximately **10,668 feet. Ensure casing is atleast half full during run for collapse safety factor.** The minimum required fill of cement behind the 7-5/8 inch intermediate casing is:

Option 1 (Single Stage):

- Cement to surface. If cement does not circulate see B.1.a, c-d above.
Wait on cement (WOC) time for a primary cement job is to include the lead cement slurry due to cave/karst or potash.

Option 2:

Operator has proposed a DV tool, the depth may be adjusted as long as the cement is changed proportionally. The DV tool may be cancelled if cement circulates to surface on the first stage.

- a. First stage to DV tool: Cement to circulate. If cement does not circulate off the DV tool, contact the appropriate BLM office before proceeding with second stage cement job.
- b. Second stage above DV tool:
 - Cement to surface. If cement does not circulate, contact the appropriate BLM office.
Wait on cement (WOC) time for a primary cement job is to include the lead cement slurry due to cave/karst or potash.

Operator has proposed to pump down 7-5/8" X 10-3/4" annulus. Operator must run a CBL or ECHO-METER from TD of the 7-5/8" casing to surface. Submit results to BLM.

3. The 5-1/2 inch production casing shall be set at approximately **21,692 feet. Ensure cement excess in the open hole is 25%.** The minimum required fill of cement behind the 5-1/2 inch production casing is:

Option 1 (Single Stage):

- Cement should tie-back at least **200 feet** into previous casing string. Operator shall provide method of verification.

Option 2:

Operator has proposed a DV tool, the depth may be adjusted as long as the cement is changed proportionally. The DV tool may be cancelled if cement circulates to surface on the first stage.

- a. First stage to DV tool: Cement to circulate. If cement does not circulate off the DV tool, contact the appropriate BLM office before proceeding with second stage cement job.
- b. Second stage above DV tool:
 - Cement should tie-back at least **200 feet** into previous casing string. Operator shall provide method of verification.

GENERAL REQUIREMENTS

The BLM is to be notified in advance for a representative to witness:

- a. Spudding well (minimum of 24 hours)
- b. Setting and/or Cementing of all casing strings (minimum of 4 hours)
- c. BOPE tests (minimum of 4 hours)

☒ Eddy County

Call the Carlsbad Field Office, 620 East Greene St., Carlsbad, NM 88220, (575) 361-2822

☒ Lea County

Call the Hobbs Field Station, 414 West Taylor, Hobbs NM 88240, (575) 689-5981

1. Unless the production casing has been run and cemented or the well has been properly plugged, the drilling rig shall not be removed from over the hole without prior approval.
 - a. In the event the operator has proposed to drill multiple wells utilizing a skid/walking rig. Operator shall secure the wellbore on the current well, after installing and testing the wellhead, by installing a blind flange of like pressure rating to the wellhead and a pressure gauge that can be monitored while drilling is performed on the other well(s).
 - b. When the operator proposes to set surface casing with Spudder Rig
 - Notify the BLM when moving in and removing the Spudder Rig.
 - Notify the BLM when moving in the 2nd Rig. Rig to be moved in within 90 days of notification that Spudder Rig has left the location.
 - BOP/BOPE test to be conducted per Onshore Oil and Gas Order No. 2 as soon as 2nd Rig is rigged up on well.

2. Floor controls are required for 3M or Greater systems. These controls will be on the rig floor, unobstructed, readily accessible to the driller and will be operational at all times during drilling and/or completion activities. Rig floor is defined as the area immediately around the rotary table; the area immediately above the substructure on which the draw works are located, this does not include the dog house or stairway area.
3. The record of the drilling rate along with the GR/N well log run from TD to surface (horizontal well – vertical portion of hole) shall be submitted to the BLM office as well as all other logs run on the borehole 30 days from completion. If available, a digital copy of the logs is to be submitted in addition to the paper copies. The Rustler top and top and bottom of Salt are to be recorded on the Completion Report.

A. CASING

1. Changes to the approved APD casing program need prior approval if the items substituted are of lesser grade or different casing size or are Non-API. The Operator can exchange the components of the proposal with that of superior strength (i.e. changing from J-55 to N-80, or from 36# to 40#). Changes to the approved cement program need prior approval if the altered cement plan has less volume or strength or if the changes are substantial (i.e. Multistage tool, ECP, etc.). The initial wellhead installed on the well will remain on the well with spools used as needed.
2. Wait on cement (WOC) for Potash Areas: After cementing but before commencing any tests, the casing string shall stand cemented under pressure until both of the following conditions have been met: 1) cement reaches a minimum compressive strength of 500 psi for all cement blends, 2) until cement has been in place at least 24 hours. WOC time will be recorded in the driller's log. The casing integrity test can be done (prior to the cement setting up) immediately after bumping the plug.
3. Wait on cement (WOC) for Water Basin: After cementing but before commencing any tests, the casing string shall stand cemented under pressure until both of the following conditions have been met: 1) cement reaches a minimum compressive strength of 500 psi at the shoe, 2) until cement has been in place at least 8 hours. WOC time will be recorded in the driller's log. See individual casing strings for details regarding lead cement slurry requirements. The casing integrity test can be done (prior to the cement setting up) immediately after bumping the plug.
4. Provide compressive strengths including hours to reach required 500 pounds compressive strength prior to cementing each casing string. Have well specific cement details onsite prior to pumping the cement for each casing string.
5. No pea gravel permitted for remedial or fall back remedial without prior authorization from the BLM engineer.

6. On that portion of any well approved for a 5M BOPE system or greater, a pressure integrity test of each casing shoe shall be performed. Formation at the shoe shall be tested to a minimum of the mud weight equivalent anticipated to control the formation pressure to the next casing depth or at total depth of the well. This test shall be performed before drilling more than 20 feet of new hole.
7. If hardband drill pipe is rotated inside casing, returns will be monitored for metal. If metal is found in samples, drill pipe will be pulled and rubber protectors which have a larger diameter than the tool joints of the drill pipe will be installed prior to continuing drilling operations.
8. Whenever a casing string is cemented in the R-111-P potash area, the NMOCD requirements shall be followed.

B. PRESSURE CONTROL

1. All blowout preventer (BOP) and related equipment (BOPE) shall comply with well control requirements as described in Onshore Oil and Gas Order No. 2 and API RP 53 Sec. 17.
2. If a variance is approved for a flexible hose to be installed from the BOP to the choke manifold, the following requirements apply: The flex line must meet the requirements of API 16C. Check condition of flexible line from BOP to choke manifold, replace if exterior is damaged or if line fails test. Line to be as straight as possible with no hard bends and is to be anchored according to Manufacturer's requirements. The flexible hose can be exchanged with a hose of equal size and equal or greater pressure rating. Anchor requirements, specification sheet and hydrostatic pressure test certification matching the hose in service, to be onsite for review. These documents shall be posted in the company man's trailer and on the rig floor.
3. 5M or higher system requires an HCR valve, remote kill line and annular to match. The remote kill line is to be installed prior to testing the system and tested to stack pressure.
4. If the operator has proposed a multi-bowl wellhead assembly in the APD. The following requirements must be met:
 - a. Wellhead shall be installed by manufacturer's representatives, submit documentation with subsequent sundry.
 - b. If the welding is performed by a third party, the manufacturer's representative shall monitor the temperature to verify that it does not exceed the maximum temperature of the seal.
 - c. Manufacturer representative shall install the test plug for the initial BOP test.
 - d. Whenever any seal subject to test pressure is broken, all the tests in OOGO2.III.A.2.i must be followed.

- e. If the cement does not circulate and one inch operations would have been possible with a standard wellhead, the well head shall be cut off, cementing operations performed and another wellhead installed.
5. The appropriate BLM office shall be notified a minimum of 4 hours in advance for a representative to witness the tests.
- a. In a water basin, for all casing strings utilizing slips, these are to be set as soon as the crew and rig are ready and any fallback cement remediation has been done. The casing cut-off and BOP installation can be initiated four hours after installing the slips, which will be approximately six hours after bumping the plug. For those casing strings not using slips, the minimum wait time before cut-off is eight hours after bumping the plug. BOP/BOPE testing can begin after cut-off or once cement reaches 500 psi compressive strength (including lead when specified), whichever is greater. However, if the float does not hold, cut-off cannot be initiated until cement reaches 500 psi compressive strength (including lead when specified).
 - b. In potash areas, for all casing strings utilizing slips, these are to be set as soon as the crew and rig are ready and any fallback cement remediation has been done. For all casing strings, casing cut-off and BOP installation can be initiated at twelve hours after bumping the plug. However, **no tests** shall commence until the cement has had a minimum of 24 hours setup time, except the casing pressure test can be initiated immediately after bumping the plug (only applies to single stage cement jobs).
 - c. The tests shall be done by an independent service company utilizing a test plug not a cup or J-packer. The operator also has the option of utilizing an independent tester to test without a plug (i.e. against the casing) pursuant to Onshore Order 2 with the pressure not to exceed 70% of the burst rating for the casing. Any test against the casing must meet the WOC time for water basin (8 hours) or potash (24 hours) or 500 pounds compressive strength, whichever is greater, prior to initiating the test (see casing segment as lead cement may be critical item).
 - d. The test shall be run on a 5000 psi chart for a 2-3M BOP/BOP, on a 10000 psi chart for a 5M BOP/BOPE and on a 15000 psi chart for a 10M BOP/BOPE. If a linear chart is used, it shall be a one hour chart. A circular chart shall have a maximum 2 hour clock. If a twelve hour or twenty-four hour chart is used, tester shall make a notation that it is run with a two hour clock.
 - e. The results of the test shall be reported to the appropriate BLM office.
 - f. All tests are required to be recorded on a calibrated test chart. A copy of the BOP/BOPE test chart and a copy of independent service company test will be submitted to the appropriate BLM office.

- g. The BOP/BOPE test shall include a low pressure test from 250 to 300 psi. The test will be held for a minimum of 10 minutes if test is done with a test plug and 30 minutes without a test plug. This test shall be performed prior to the test at full stack pressure.
- h. BOP/BOPE must be tested by an independent service company within 500 feet of the top of the Wolfcamp formation if the time between the setting of the intermediate casing and reaching this depth exceeds 20 days. This test does not exclude the test prior to drilling out the casing shoe as per Onshore Order No. 2.

C. DRILLING MUD

Mud system monitoring equipment, with derrick floor indicators and visual and audio alarms, shall be operating before drilling into the Wolfcamp formation, and shall be used until production casing is run and cemented.

D. WASTE MATERIAL AND FLUIDS

All waste (i.e. drilling fluids, trash, salts, chemicals, sewage, gray water, etc.) created as a result of drilling operations and completion operations shall be safely contained and disposed of properly at a waste disposal facility. No waste material or fluid shall be disposed of on the well location or surrounding area.

Porto-johns and trash containers will be on-location during fracturing operations or any other crew-intensive operations.

KPI – 06/27/2022

District I
1625 N. French Dr., Hobbs, NM 88240
Phone: (575) 393-6161 Fax: (575) 393-0720

District II
811 S. First St., Artesia, NM 88210
Phone: (575) 748-1283 Fax: (575) 748-9720

District III
1000 Rio Brazos Road, Aztec, NM 87410
Phone: (505) 334-6178 Fax: (505) 334-6170

District IV
1220 S. St. Francis Dr., Santa Fe, NM 87505
Phone: (505) 476-3460 Fax: (505) 476-3462

State of New Mexico
Energy, Minerals & Natural Resources Department
OIL CONSERVATION DIVISION
1220 South St. Francis Dr.
Santa Fe, NM 87505

Form C-102
Revised August 1, 2011
Submit one copy to appropriate
District Office

☐ AMENDED REPORT

WELL LOCATION AND ACREAGE DEDICATION PLAT

¹ API Number 30-025-48937		² Pool Code 2200	³ Pool Name Antelope Ridge, Bone Spring	
⁴ Property Code 330848	⁵ Property Name SAKER 6_7 FED COM			⁶ Well Number 36H
⁷ OGRID No. 16696	⁸ Operator Name OXY USA INC.			⁹ Elevation 3449.6' (NAVD 88)

¹⁰Surface Location

UL or lot no.	Section	Township	Range	Lot Idn	Feet from the	North/South line	Feet from the	East/West line	County
3	6	24S	35E		200	NORTH	2030	WEST	LEA

"Bottom Hole Location If Different From Surface

UL or lot no. N	Section 7	Township 24S	Range 35E	Lot Idn	Feet from the 20	North/South line SOUTH	Feet from the 2090	East/West line WEST	County LEA
¹² Dedicated Acres 320.02		¹³ Joint or Infill		¹⁴ Consolidation Code		¹⁵ Order No.			

No allowable will be assigned to this completion until all interests have been consolidated or a non-standard unit has been approved by the division.

16	NAD 83 (SURFACE HOLE LOCATION) LATITUDE = 32°15'11.75" (32.253264°) LONGITUDE = 103°24'31.07" (103.408630°) NAD 27 (SURFACE HOLE LOCATION) LATITUDE = 32°15'11.30" (32.253139°) LONGITUDE = 103°24'29.36" (103.408156°) STATE PLANE NAD 83 (N.M. EAST) N: 457101.74' E: 827199.29' STATE PLANE NAD 27 (N.M. EAST) N: 457042.38' E: 786014.77'	SURVEY PERP. 200' FNL 2030' FWL
	NAD 83 (KICK OFF POINT) LATITUDE = 32°15'13.23" (32.253676°) LONGITUDE = 103°24'30.37" (103.408436°) NAD 27 (KICK OFF POINT) LATITUDE = 32°15'12.78" (32.253551°) LONGITUDE = 103°24'28.66" (103.407962°) STATE PLANE NAD 83 (N.M. EAST) N: 457252.29' E: 827257.97' STATE PLANE NAD 27 (N.M. EAST) N: 457192.93' E: 786073.45'	SURVEY PERP. 50' FNL 2090' FWL
	NAD 83 (FIRST TAKE POINT) LATITUDE = 32°15'12.74" (32.253539°) LONGITUDE = 103°24'30.37" (103.408436°) NAD 27 (FIRST TAKE POINT) LATITUDE = 32°15'12.29" (32.253414°) LONGITUDE = 103°24'28.66" (103.407962°) STATE PLANE NAD 83 (N.M. EAST) N: 457202.30' E: 827258.41' STATE PLANE NAD 27 (N.M. EAST) N: 457142.94' E: 786073.89'	SURVEY PERP. 100' FNL 2090' FWL

NAD 83 (LAST TAKE POINT) LATITUDE = 32°13'30.21" (32.225058°) LONGITUDE = 103°24'30.32" (103.408421°) NAD 27 (LAST TAKE POINT) LATITUDE = 32°13'29.76" (32.224933°) LONGITUDE = 103°24'28.62" (103.407949°) STATE PLANE NAD 83 (N.M. EAST) N: 446841.02' E: 827352.06' STATE PLANE NAD 27 (N.M. EAST) N: 446781.94' E: 786167.09'	SURVEY PERP. 100' FSL 2090' FWL
NAD 83 (BOTTOM HOLE LOCATION) LATITUDE = 32°13'29.42" (32.224838°) LONGITUDE = 103°24'30.32" (103.408421°) NAD 27 (BOTTOM HOLE LOCATION) LATITUDE = 32°13'28.97" (32.224713°) LONGITUDE = 103°24'28.62" (103.407949°) STATE PLANE NAD 83 (N.M. EAST) N: 446761.04' E: 827352.78' STATE PLANE NAD 27 (N.M. EAST) N: 446701.95' E: 786167.81'	SURVEY PERP. 20' FSL 2090' FWL

HORIZONTAL SPACING UNIT

Section Line

KOP

FTP

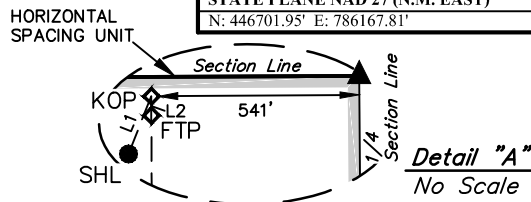
SHL

541'

1/4"

Detail "A"
No Scale

See Detail "A"



LOT 1
40.00 ACRES
S89°46'19"W
2640.84' (Meas.)

LOT 2
40.01 ACRES
S89°46'19"W
2640.84' (Meas.)

LOT 3
40.02 ACRES
S89°41'10"W
2631.14' (Meas.)

LOT 4
39.76 ACRES
S89°41'10"W
2631.14' (Meas.)

LOT 5
39.87 ACRES
S89°41'56"W
2640.30' (Meas.)

LOT 6
39.99 ACRES
S89°41'56"W
2640.30' (Meas.)

LOT 7
40.10 ACRES
S89°43'29"W
2646.32' (Meas.)

LOT 8
40.17 ACRES
S89°43'29"W
2646.32' (Meas.)

LOT 9
40.19 ACRES
S89°43'47"W
2640.49' (Meas.)

LOT 10
40.21 ACRES
S89°43'47"W
2640.49' (Meas.)

LOT 11
40.23 ACRES
S89°45'26"W
2646.85' (Meas.)

LOT 12
40.25 ACRES
S89°45'26"W
2646.85' (Meas.)

LOT 13
40.27 ACRES
S89°44'27"W
2631.04' (Meas.)

LOT 14
40.29 ACRES
S89°44'27"W
2631.04' (Meas.)

LOT 15
40.31 ACRES
S89°43'41"W
2646.34' (Meas.)

LOT 16
40.33 ACRES
S89°43'41"W
2646.34' (Meas.)

LOT 17
40.35 ACRES
S89°43'41"W
2646.34' (Meas.)

LOT 18
40.37 ACRES
S89°43'41"W
2646.34' (Meas.)

LOT 19
40.39 ACRES
S89°43'41"W
2646.34' (Meas.)

LOT 20
40.41 ACRES
S89°43'41"W
2646.34' (Meas.)

LOT 21
40.43 ACRES
S89°43'41"W
2646.34' (Meas.)

LOT 22
40.45 ACRES
S89°43'41"W
2646.34' (Meas.)

LOT 23
40.47 ACRES
S89°43'41"W
2646.34' (Meas.)

LOT 24
40.49 ACRES
S89°43'41"W
2646.34' (Meas.)

LOT 25
40.51 ACRES
S89°43'41"W
2646.34' (Meas.)

LOT 26
40.53 ACRES
S89°43'41"W
2646.34' (Meas.)

LOT 27
40.55 ACRES
S89°43'41"W
2646.34' (Meas.)

LOT 28
40.57 ACRES
S89°43'41"W
2646.34' (Meas.)

LOT 29
40.59 ACRES
S89°43'41"W
2646.34' (Meas.)

LOT 30
40.61 ACRES
S89°43'41"W
2646.34' (Meas.)

LOT 31
40.63 ACRES
S89°43'41"W
2646.34' (Meas.)

LOT 32
40.65 ACRES
S89°43'41"W
2646.34' (Meas.)

LOT 33
40.67 ACRES
S89°43'41"W
2646.34' (Meas.)

LOT 34
40.69 ACRES
S89°43'41"W
2646.34' (Meas.)

LOT 35
40.71 ACRES
S89°43'41"W
2646.34' (Meas.)

LOT 36
40.73 ACRES
S89°43'41"W
2646.34' (Meas.)

LOT 37
40.75 ACRES
S89°43'41"W
2646.34' (Meas.)

LOT 38
40.77 ACRES
S89°43'41"W
2646.34' (Meas.)

LOT 39
40.79 ACRES
S89°43'41"W
2646.34' (Meas.)

LOT 40
40.81 ACRES
S89°43'41"W
2646.34' (Meas.)

LOT 41
40.83 ACRES
S89°43'41"W
2646.34' (Meas.)

LOT 42
40.85 ACRES
S89°43'41"W
2646.34' (Meas.)

LOT 43
40.87 ACRES
S89°43'41"W
2646.34' (Meas.)

LOT 44
40.89 ACRES
S89°43'41"W
2646.34' (Meas.)

LOT 45
40.91 ACRES
S89°43'41"W
2646.34' (Meas.)

LOT 46
40.93 ACRES
S89°43'41"W
2646.34' (Meas.)

LOT 47
40.95 ACRES
S89°43'41"W
2646.34' (Meas.)

LOT 48
40.97 ACRES
S89°43'41"W
2646.34' (Meas.)

LOT 49
40.99 ACRES
S89°43'41"W
2646.34' (Meas.)

LOT 50
41.01 ACRES
S89°43'41"W
2646.34' (Meas.)

LOT 51
41.03 ACRES
S89°43'41"W
2646.34' (Meas.)

LOT 52
41.05 ACRES
S89°43'41"W
2646.34' (Meas.)

LOT 53
41.07 ACRES
S89°43'41"W
2646.34' (Meas.)

LOT 54
41.09 ACRES
S89°43'41"W
2646.34' (Meas.)

LOT 55
41.11 ACRES
S89°43'41"W
2646.34' (Meas.)

LOT 56
41.13 ACRES
S89°43'41"W
2646.34' (Meas.)

LOT 57
41.15 ACRES
S89°43'41"W
2646.34' (Meas.)

LOT 58
41.17 ACRES
S89°43'41"W
2646.34' (Meas.)

LOT 59
41.19 ACRES
S89°43'41"W
2646.34' (Meas.)

LOT 60
41.21 ACRES
S89°43'41"W
2646.34' (Meas.)

LOT 61
41.23 ACRES
S89°43'41"W
2646.34' (Meas.)

LOT 62
41.25 ACRES
S89°43'41"W
2646.34' (Meas.)

LOT 63
41.27 ACRES
S89°43'41"W
2646.34' (Meas.)

LOT 64
41.29 ACRES
S89°43'41"W
2646.34' (Meas.)

LOT 65
41.31 ACRES
S89°43'41"W
2646.34' (Meas.)

LOT 66
41.33 ACRES
S89°43'41"W
2646.34' (Meas.)

LOT 67
41.35 ACRES
S89°43'41"W
2646.34' (Meas.)

LOT 68
41.37 ACRES
S89°43'41"W
2646.34' (Meas.)

LOT 69
41.39 ACRES
S89°43'41"W
2646.34' (Meas.)

LOT 70
41.41 ACRES
S89°43'41"W
2646.34' (Meas.)

LOT 71
41.43 ACRES
S89°43'41"W
2646.34' (Meas.)

LOT 72
41.45 ACRES
S89°43'41"W
2646.34' (Meas.)

LOT 73
41.47 ACRES
S89°43'41"W
2646.34' (Meas.)

LOT 74
41.49 ACRES
S89°43'41"W
2646.34' (Meas.)

LOT 75
41.51 ACRES
S89°43'41"W
2646.34' (Meas.)

LOT 76
41.53 ACRES
S89°43'41"W
2646.34' (Meas.)

LOT 77
41.55 ACRES
S89°43'41"W
2646.34' (Meas.)

LOT 78
41.57 ACRES
S89°43'41"W
2646.34' (Meas.)

LOT 79
41.59 ACRES
S89°43'41"W
2646.34' (Meas.)

LOT 80
41.61 ACRES
S89°43'41"W
2

LINE TABLE		
LINE	DIRECTION	LENGTH
L1	N21°32'01"E	161.61'
L2	S00°15'58"E	50.00'
L3	S00°16'35"E	80.00'

REV: 3 01-04-21 R.J. (HSU CHANGE)

17 OPERATOR CERTIFICATION

I hereby certify that the information contained herein is true and complete to the best of my knowledge and belief, and that this organization either owns a working interest or unleased mineral interest in the land including the proposed bottom hole location or has a right to drill this well at this location pursuant to a contract with an owner of such a mineral or working interest, or to a voluntary pooling agreement or a compulsory pooling order heretofore entered by the division.

Roni Mathew 8/9/2021
Signature Date

RONI MATHEW

Printed Name

roni_mathew@oxy.com

E-mail Address

18 SURVEYOR CERTIFICATION

I hereby certify that the well location shown on this plat was plotted from field notes of actual surveys made by me or under my supervision, and that the same is true and correct to the best of my belief.

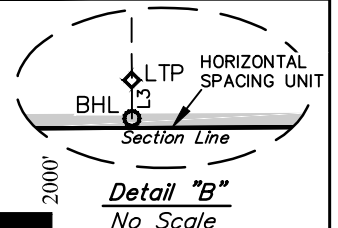
December 12, 2019

Date of Survey

Signature and Seal of Professional Surveyor:



Certificate Number:



NOTE:

- Distances referenced on plat to section lines are perpendicular.
- Basis of Bearing is a Transverse Mercator Projection with a Central Meridian of W103°53'00" (NAD 83)

OXY

PRD NM DIRECTIONAL PLANS (NAD 1983)

Saker 6_7

Saker 6_7 Fed Com 36H

Wellbore #1

Plan: Permitting Plan

Standard Planning Report

11 February, 2021

Oxy Inc.

Planning Report

Database:	HOPSP	Local Co-ordinate Reference:	Well Saker 6_7 Fed Com 36H
Company:	ENGINEERING DESIGNS	TVD Reference:	RKB=26.5' @ 3476.10ft
Project:	PRD NM DIRECTIONAL PLANS (NAD 1983)	MD Reference:	RKB=26.5' @ 3476.10ft
Site:	Saker 6_7	North Reference:	Grid
Well:	Saker 6_7 Fed Com 36H	Survey Calculation Method:	Minimum Curvature
Wellbore:	Wellbore #1		
Design:	Permitting Plan		

Project	PRD NM DIRECTIONAL PLANS (NAD 1983)		
Map System:	US State Plane 1983	System Datum:	Mean Sea Level
Geo Datum:	North American Datum 1983		
Map Zone:	New Mexico Eastern Zone		Using geodetic scale factor

Site		Saker 6_7			
Site Position:		Northing:	457,094.74 usft	Latitude:	32° 15' 11.741857 N
From:	Map	Easting:	826,474.44 usft	Longitude:	103° 24' 39.507225 W
Position Uncertainty:	1.00 ft	Slot Radius:	13.200 in	Grid Convergence:	0.49

Well	Saker 6_7 Fed Com 36H					
Well Position	+N/-S	7.00 ft	Northing:	457,101.74 usft	Latitude:	32° 15' 11.749420 N
	+E/-W	724.85 ft	Easting:	827,199.29 usft	Longitude:	103° 24' 31.066402 W
Position Uncertainty		1.00 ft	Wellhead Elevation:		Ground Level:	3,449.60 ft

Wellbore	Wellbore #1				
Magnetics	Model Name	Sample Date	Declination (°)	Dip Angle (°)	Field Strength (nT)
	HDGM_FILE	12/31/2019	6.60	59.87	47,828.60000000

Design	Permitting Plan			
Audit Notes:				
Version:	Phase:	PROTOTYPE	Tie On Depth:	0.00
Vertical Section:	Depth From (TVD) (ft)	+N/-S (ft)	+E/-W (ft)	Direction (°)
	0.00	0.00	0.00	179.15

Plan Survey Tool Program	Date	2/11/2021		
Depth From (ft)	Depth To (ft)	Survey (Wellbore)	Tool Name	Remarks
1	0.00	21,692.26	Permitting Plan (Wellbore #1)	B001Mb_MWD+HRGM OWSG MWD + HRGM

Plan Sections										
Measured Depth (ft)	Inclination (°)	Azimuth (°)	Vertical Depth (ft)	+N/-S (ft)	+E/-W (ft)	Dogleg Rate (°/100ft)	Build Rate (°/100ft)	Turn Rate (°/100ft)	TFO (°)	Target
0.00	0.00	0.00	0.00	0.00	0.00	0.00	0.00	0.00	0.00	
9,440.00	0.00	0.00	9,440.00	0.00	0.00	0.00	0.00	0.00	0.00	
10,440.00	10.00	12.93	10,434.93	84.84	19.48	1.00	1.00	0.00	12.93	
10,768.50	10.00	12.93	10,758.44	140.44	32.24	0.00	0.00	0.00	0.00	
11,740.76	87.50	179.48	11,427.10	-399.06	63.39	10.00	7.97	17.13	166.45	
21,692.26	87.50	179.48	11,861.10	-10,340.69	153.49	0.00	0.00	0.00	0.00	PBHL (Saker 6_7)

Oxy Inc.

Planning Report

Database:	HOPSP	Local Co-ordinate Reference:	Well Saker 6_7 Fed Com 36H
Company:	ENGINEERING DESIGNS	TVD Reference:	RKB=26.5' @ 3476.10ft
Project:	PRD NM DIRECTIONAL PLANS (NAD 1983)	MD Reference:	RKB=26.5' @ 3476.10ft
Site:	Saker 6_7	North Reference:	Grid
Well:	Saker 6_7 Fed Com 36H	Survey Calculation Method:	Minimum Curvature
Wellbore:	Wellbore #1		
Design:	Permitting Plan		

Planned Survey									
Measured Depth (ft)	Inclination (°)	Azimuth (°)	Vertical Depth (ft)	+N/-S (ft)	+E/-W (ft)	Vertical Section (ft)	Dogleg Rate (°/100ft)	Build Rate (°/100ft)	Turn Rate (°/100ft)
0.00	0.00	0.00	0.00	0.00	0.00	0.00	0.00	0.00	0.00
100.00	0.00	0.00	100.00	0.00	0.00	0.00	0.00	0.00	0.00
200.00	0.00	0.00	200.00	0.00	0.00	0.00	0.00	0.00	0.00
300.00	0.00	0.00	300.00	0.00	0.00	0.00	0.00	0.00	0.00
400.00	0.00	0.00	400.00	0.00	0.00	0.00	0.00	0.00	0.00
500.00	0.00	0.00	500.00	0.00	0.00	0.00	0.00	0.00	0.00
600.00	0.00	0.00	600.00	0.00	0.00	0.00	0.00	0.00	0.00
700.00	0.00	0.00	700.00	0.00	0.00	0.00	0.00	0.00	0.00
800.00	0.00	0.00	800.00	0.00	0.00	0.00	0.00	0.00	0.00
900.00	0.00	0.00	900.00	0.00	0.00	0.00	0.00	0.00	0.00
1,000.00	0.00	0.00	1,000.00	0.00	0.00	0.00	0.00	0.00	0.00
1,100.00	0.00	0.00	1,100.00	0.00	0.00	0.00	0.00	0.00	0.00
1,200.00	0.00	0.00	1,200.00	0.00	0.00	0.00	0.00	0.00	0.00
1,300.00	0.00	0.00	1,300.00	0.00	0.00	0.00	0.00	0.00	0.00
1,400.00	0.00	0.00	1,400.00	0.00	0.00	0.00	0.00	0.00	0.00
1,500.00	0.00	0.00	1,500.00	0.00	0.00	0.00	0.00	0.00	0.00
1,600.00	0.00	0.00	1,600.00	0.00	0.00	0.00	0.00	0.00	0.00
1,700.00	0.00	0.00	1,700.00	0.00	0.00	0.00	0.00	0.00	0.00
1,800.00	0.00	0.00	1,800.00	0.00	0.00	0.00	0.00	0.00	0.00
1,900.00	0.00	0.00	1,900.00	0.00	0.00	0.00	0.00	0.00	0.00
2,000.00	0.00	0.00	2,000.00	0.00	0.00	0.00	0.00	0.00	0.00
2,100.00	0.00	0.00	2,100.00	0.00	0.00	0.00	0.00	0.00	0.00
2,200.00	0.00	0.00	2,200.00	0.00	0.00	0.00	0.00	0.00	0.00
2,300.00	0.00	0.00	2,300.00	0.00	0.00	0.00	0.00	0.00	0.00
2,400.00	0.00	0.00	2,400.00	0.00	0.00	0.00	0.00	0.00	0.00
2,500.00	0.00	0.00	2,500.00	0.00	0.00	0.00	0.00	0.00	0.00
2,600.00	0.00	0.00	2,600.00	0.00	0.00	0.00	0.00	0.00	0.00
2,700.00	0.00	0.00	2,700.00	0.00	0.00	0.00	0.00	0.00	0.00
2,800.00	0.00	0.00	2,800.00	0.00	0.00	0.00	0.00	0.00	0.00
2,900.00	0.00	0.00	2,900.00	0.00	0.00	0.00	0.00	0.00	0.00
3,000.00	0.00	0.00	3,000.00	0.00	0.00	0.00	0.00	0.00	0.00
3,100.00	0.00	0.00	3,100.00	0.00	0.00	0.00	0.00	0.00	0.00
3,200.00	0.00	0.00	3,200.00	0.00	0.00	0.00	0.00	0.00	0.00
3,300.00	0.00	0.00	3,300.00	0.00	0.00	0.00	0.00	0.00	0.00
3,400.00	0.00	0.00	3,400.00	0.00	0.00	0.00	0.00	0.00	0.00
3,500.00	0.00	0.00	3,500.00	0.00	0.00	0.00	0.00	0.00	0.00
3,600.00	0.00	0.00	3,600.00	0.00	0.00	0.00	0.00	0.00	0.00
3,700.00	0.00	0.00	3,700.00	0.00	0.00	0.00	0.00	0.00	0.00
3,800.00	0.00	0.00	3,800.00	0.00	0.00	0.00	0.00	0.00	0.00
3,900.00	0.00	0.00	3,900.00	0.00	0.00	0.00	0.00	0.00	0.00
4,000.00	0.00	0.00	4,000.00	0.00	0.00	0.00	0.00	0.00	0.00
4,100.00	0.00	0.00	4,100.00	0.00	0.00	0.00	0.00	0.00	0.00
4,200.00	0.00	0.00	4,200.00	0.00	0.00	0.00	0.00	0.00	0.00
4,300.00	0.00	0.00	4,300.00	0.00	0.00	0.00	0.00	0.00	0.00
4,400.00	0.00	0.00	4,400.00	0.00	0.00	0.00	0.00	0.00	0.00
4,500.00	0.00	0.00	4,500.00	0.00	0.00	0.00	0.00	0.00	0.00
4,600.00	0.00	0.00	4,600.00	0.00	0.00	0.00	0.00	0.00	0.00
4,700.00	0.00	0.00	4,700.00	0.00	0.00	0.00	0.00	0.00	0.00
4,800.00	0.00	0.00	4,800.00	0.00	0.00	0.00	0.00	0.00	0.00
4,900.00	0.00	0.00	4,900.00	0.00	0.00	0.00	0.00	0.00	0.00
5,000.00	0.00	0.00	5,000.00	0.00	0.00	0.00	0.00	0.00	0.00
5,100.00	0.00	0.00	5,100.00	0.00	0.00	0.00	0.00	0.00	0.00
5,200.00	0.00	0.00	5,200.00	0.00	0.00	0.00	0.00	0.00	0.00
5,300.00	0.00	0.00	5,300.00	0.00	0.00	0.00	0.00	0.00	0.00

Oxy Inc.

Planning Report

Database:	HOPSPP	Local Co-ordinate Reference:	Well Saker 6_7 Fed Com 36H
Company:	ENGINEERING DESIGNS	TVD Reference:	RKB=26.5' @ 3476.10ft
Project:	PRD NM DIRECTIONAL PLANS (NAD 1983)	MD Reference:	RKB=26.5' @ 3476.10ft
Site:	Saker 6_7	North Reference:	Grid
Well:	Saker 6_7 Fed Com 36H	Survey Calculation Method:	Minimum Curvature
Wellbore:	Wellbore #1		
Design:	Permitting Plan		

Planned Survey									
Measured Depth (ft)	Inclination (°)	Azimuth (°)	Vertical Depth (ft)	+N/-S (ft)	+E/-W (ft)	Vertical Section (ft)	Dogleg Rate (°/100ft)	Build Rate (°/100ft)	Turn Rate (°/100ft)
5,400.00	0.00	0.00	5,400.00	0.00	0.00	0.00	0.00	0.00	0.00
5,500.00	0.00	0.00	5,500.00	0.00	0.00	0.00	0.00	0.00	0.00
5,600.00	0.00	0.00	5,600.00	0.00	0.00	0.00	0.00	0.00	0.00
5,700.00	0.00	0.00	5,700.00	0.00	0.00	0.00	0.00	0.00	0.00
5,800.00	0.00	0.00	5,800.00	0.00	0.00	0.00	0.00	0.00	0.00
5,900.00	0.00	0.00	5,900.00	0.00	0.00	0.00	0.00	0.00	0.00
6,000.00	0.00	0.00	6,000.00	0.00	0.00	0.00	0.00	0.00	0.00
6,100.00	0.00	0.00	6,100.00	0.00	0.00	0.00	0.00	0.00	0.00
6,200.00	0.00	0.00	6,200.00	0.00	0.00	0.00	0.00	0.00	0.00
6,300.00	0.00	0.00	6,300.00	0.00	0.00	0.00	0.00	0.00	0.00
6,400.00	0.00	0.00	6,400.00	0.00	0.00	0.00	0.00	0.00	0.00
6,500.00	0.00	0.00	6,500.00	0.00	0.00	0.00	0.00	0.00	0.00
6,600.00	0.00	0.00	6,600.00	0.00	0.00	0.00	0.00	0.00	0.00
6,700.00	0.00	0.00	6,700.00	0.00	0.00	0.00	0.00	0.00	0.00
6,800.00	0.00	0.00	6,800.00	0.00	0.00	0.00	0.00	0.00	0.00
6,900.00	0.00	0.00	6,900.00	0.00	0.00	0.00	0.00	0.00	0.00
7,000.00	0.00	0.00	7,000.00	0.00	0.00	0.00	0.00	0.00	0.00
7,100.00	0.00	0.00	7,100.00	0.00	0.00	0.00	0.00	0.00	0.00
7,200.00	0.00	0.00	7,200.00	0.00	0.00	0.00	0.00	0.00	0.00
7,300.00	0.00	0.00	7,300.00	0.00	0.00	0.00	0.00	0.00	0.00
7,400.00	0.00	0.00	7,400.00	0.00	0.00	0.00	0.00	0.00	0.00
7,500.00	0.00	0.00	7,500.00	0.00	0.00	0.00	0.00	0.00	0.00
7,600.00	0.00	0.00	7,600.00	0.00	0.00	0.00	0.00	0.00	0.00
7,700.00	0.00	0.00	7,700.00	0.00	0.00	0.00	0.00	0.00	0.00
7,800.00	0.00	0.00	7,800.00	0.00	0.00	0.00	0.00	0.00	0.00
7,900.00	0.00	0.00	7,900.00	0.00	0.00	0.00	0.00	0.00	0.00
8,000.00	0.00	0.00	8,000.00	0.00	0.00	0.00	0.00	0.00	0.00
8,100.00	0.00	0.00	8,100.00	0.00	0.00	0.00	0.00	0.00	0.00
8,200.00	0.00	0.00	8,200.00	0.00	0.00	0.00	0.00	0.00	0.00
8,300.00	0.00	0.00	8,300.00	0.00	0.00	0.00	0.00	0.00	0.00
8,400.00	0.00	0.00	8,400.00	0.00	0.00	0.00	0.00	0.00	0.00
8,500.00	0.00	0.00	8,500.00	0.00	0.00	0.00	0.00	0.00	0.00
8,600.00	0.00	0.00	8,600.00	0.00	0.00	0.00	0.00	0.00	0.00
8,700.00	0.00	0.00	8,700.00	0.00	0.00	0.00	0.00	0.00	0.00
8,800.00	0.00	0.00	8,800.00	0.00	0.00	0.00	0.00	0.00	0.00
8,900.00	0.00	0.00	8,900.00	0.00	0.00	0.00	0.00	0.00	0.00
9,000.00	0.00	0.00	9,000.00	0.00	0.00	0.00	0.00	0.00	0.00
9,100.00	0.00	0.00	9,100.00	0.00	0.00	0.00	0.00	0.00	0.00
9,200.00	0.00	0.00	9,200.00	0.00	0.00	0.00	0.00	0.00	0.00
9,300.00	0.00	0.00	9,300.00	0.00	0.00	0.00	0.00	0.00	0.00
9,400.00	0.00	0.00	9,400.00	0.00	0.00	0.00	0.00	0.00	0.00
9,440.00	0.00	0.00	9,440.00	0.00	0.00	0.00	0.00	0.00	0.00
9,500.00	0.60	12.93	9,500.00	0.31	0.07	-0.31	1.00	1.00	0.00
9,600.00	1.60	12.93	9,599.98	2.18	0.50	-2.17	1.00	1.00	0.00
9,700.00	2.60	12.93	9,699.91	5.75	1.32	-5.73	1.00	1.00	0.00
9,800.00	3.60	12.93	9,799.76	11.02	2.53	-10.98	1.00	1.00	0.00
9,900.00	4.60	12.93	9,899.51	17.99	4.13	-17.92	1.00	1.00	0.00
10,000.00	5.60	12.93	9,999.11	26.65	6.12	-26.56	1.00	1.00	0.00
10,100.00	6.60	12.93	10,098.54	37.01	8.50	-36.88	1.00	1.00	0.00
10,200.00	7.60	12.93	10,197.77	49.06	11.26	-48.88	1.00	1.00	0.00
10,300.00	8.60	12.93	10,296.77	62.79	14.41	-62.57	1.00	1.00	0.00
10,400.00	9.60	12.93	10,395.51	78.20	17.95	-77.93	1.00	1.00	0.00
10,440.00	10.00	12.93	10,434.93	84.84	19.48	-84.54	1.00	1.00	0.00
10,500.00	10.00	12.93	10,494.02	94.99	21.81	-94.66	0.00	0.00	0.00

Oxy Inc.

Planning Report

Database:	HOPSPP	Local Co-ordinate Reference:	Well Saker 6_7 Fed Com 36H
Company:	ENGINEERING DESIGNS	TVD Reference:	RKB=26.5' @ 3476.10ft
Project:	PRD NM DIRECTIONAL PLANS (NAD 1983)	MD Reference:	RKB=26.5' @ 3476.10ft
Site:	Saker 6_7	North Reference:	Grid
Well:	Saker 6_7 Fed Com 36H	Survey Calculation Method:	Minimum Curvature
Wellbore:	Wellbore #1		
Design:	Permitting Plan		

Planned Survey										
Measured Depth (ft)	Inclination (°)	Azimuth (°)	Vertical Depth (ft)	+N/-S (ft)	+E/-W (ft)	Vertical Section (ft)	Dogleg Rate (°/100ft)	Build Rate (°/100ft)	Turn Rate (°/100ft)	
10,600.00	10.00	12.93	10,592.50	111.92	25.69	-111.52	0.00	0.00	0.00	
10,700.00	10.00	12.93	10,690.98	128.84	29.58	-128.39	0.00	0.00	0.00	
10,768.50	10.00	12.93	10,758.44	140.44	32.24	-139.94	0.00	0.00	0.00	
10,800.00	6.98	19.01	10,789.59	144.91	33.48	-144.40	10.00	-9.60	19.31	
10,900.00	4.14	145.37	10,889.34	147.69	37.52	-147.12	10.00	-2.84	126.35	
11,000.00	13.62	169.91	10,988.06	133.09	41.64	-132.46	10.00	9.48	24.55	
11,100.00	23.53	174.22	11,082.74	101.56	45.73	-100.87	10.00	9.91	4.31	
11,200.00	33.49	176.06	11,170.50	54.05	49.64	-53.30	10.00	9.96	1.84	
11,300.00	43.47	177.12	11,248.68	-8.00	53.28	8.79	10.00	9.98	1.07	
11,400.00	53.46	177.85	11,314.90	-82.69	56.52	83.52	10.00	9.99	0.73	
11,500.00	63.45	178.42	11,367.16	-167.75	59.27	168.61	10.00	9.99	0.56	
11,600.00	73.44	178.89	11,403.85	-260.61	61.44	261.50	10.00	9.99	0.47	
11,700.00	83.43	179.31	11,423.88	-358.45	62.96	359.34	10.00	9.99	0.42	
11,740.76	87.50	179.48	11,427.10	-399.06	63.39	399.96	10.00	9.99	0.41	
11,800.00	87.50	179.48	11,429.69	-458.25	63.93	459.15	0.00	0.00	0.00	
11,900.00	87.50	179.48	11,434.05	-558.15	64.83	559.05	0.00	0.00	0.00	
12,000.00	87.50	179.48	11,438.41	-658.05	65.74	658.95	0.00	0.00	0.00	
12,100.00	87.50	179.48	11,442.77	-757.95	66.64	758.86	0.00	0.00	0.00	
12,200.00	87.50	179.48	11,447.13	-857.85	67.55	858.76	0.00	0.00	0.00	
12,300.00	87.50	179.48	11,451.49	-957.75	68.45	958.66	0.00	0.00	0.00	
12,400.00	87.50	179.48	11,455.85	-1,057.65	69.36	1,058.57	0.00	0.00	0.00	
12,500.00	87.50	179.48	11,460.22	-1,157.56	70.27	1,158.47	0.00	0.00	0.00	
12,600.00	87.50	179.48	11,464.58	-1,257.46	71.17	1,258.37	0.00	0.00	0.00	
12,700.00	87.50	179.48	11,468.94	-1,357.36	72.08	1,358.28	0.00	0.00	0.00	
12,800.00	87.50	179.48	11,473.30	-1,457.26	72.98	1,458.18	0.00	0.00	0.00	
12,900.00	87.50	179.48	11,477.66	-1,557.16	73.89	1,558.08	0.00	0.00	0.00	
13,000.00	87.50	179.48	11,482.02	-1,657.06	74.79	1,657.99	0.00	0.00	0.00	
13,100.00	87.50	179.48	11,486.38	-1,756.96	75.70	1,757.89	0.00	0.00	0.00	
13,200.00	87.50	179.48	11,490.74	-1,856.86	76.60	1,857.79	0.00	0.00	0.00	
13,300.00	87.50	179.48	11,495.10	-1,956.76	77.51	1,957.70	0.00	0.00	0.00	
13,400.00	87.50	179.48	11,499.47	-2,056.66	78.41	2,057.60	0.00	0.00	0.00	
13,500.00	87.50	179.48	11,503.83	-2,156.56	79.32	2,157.50	0.00	0.00	0.00	
13,600.00	87.50	179.48	11,508.19	-2,256.46	80.22	2,257.41	0.00	0.00	0.00	
13,700.00	87.50	179.48	11,512.55	-2,356.36	81.13	2,357.31	0.00	0.00	0.00	
13,800.00	87.50	179.48	11,516.91	-2,456.26	82.04	2,457.21	0.00	0.00	0.00	
13,900.00	87.50	179.48	11,521.27	-2,556.17	82.94	2,557.12	0.00	0.00	0.00	
14,000.00	87.50	179.48	11,525.63	-2,656.07	83.85	2,657.02	0.00	0.00	0.00	
14,100.00	87.50	179.48	11,529.99	-2,755.97	84.75	2,756.92	0.00	0.00	0.00	
14,200.00	87.50	179.48	11,534.35	-2,855.87	85.66	2,856.82	0.00	0.00	0.00	
14,300.00	87.50	179.48	11,538.72	-2,955.77	86.56	2,956.73	0.00	0.00	0.00	
14,400.00	87.50	179.48	11,543.08	-3,055.67	87.47	3,056.63	0.00	0.00	0.00	
14,500.00	87.50	179.48	11,547.44	-3,155.57	88.37	3,156.53	0.00	0.00	0.00	
14,600.00	87.50	179.48	11,551.80	-3,255.47	89.28	3,256.44	0.00	0.00	0.00	
14,700.00	87.50	179.48	11,556.16	-3,355.37	90.18	3,356.34	0.00	0.00	0.00	
14,800.00	87.50	179.48	11,560.52	-3,455.27	91.09	3,456.24	0.00	0.00	0.00	
14,900.00	87.50	179.48	11,564.88	-3,555.17	91.99	3,556.15	0.00	0.00	0.00	
15,000.00	87.50	179.48	11,569.24	-3,655.07	92.90	3,656.05	0.00	0.00	0.00	
15,100.00	87.50	179.48	11,573.60	-3,754.97	93.81	3,755.95	0.00	0.00	0.00	
15,200.00	87.50	179.48	11,577.97	-3,854.88	94.71	3,855.86	0.00	0.00	0.00	
15,300.00	87.50	179.48	11,582.33	-3,954.78	95.62	3,955.76	0.00	0.00	0.00	
15,400.00	87.50	179.48	11,586.69	-4,054.68	96.52	4,055.66	0.00	0.00	0.00	
15,500.00	87.50	179.48	11,591.05	-4,154.58	97.43	4,155.57	0.00	0.00	0.00	
15,600.00	87.50	179.48	11,595.41	-4,254.48	98.33	4,255.47	0.00	0.00	0.00	
15,700.00	87.50	179.48	11,599.77	-4,354.38	99.24	4,355.37	0.00	0.00	0.00	

Oxy Inc.

Planning Report

Database:	HOPSPP	Local Co-ordinate Reference:	Well Saker 6_7 Fed Com 36H
Company:	ENGINEERING DESIGNS	TVD Reference:	RKB=26.5' @ 3476.10ft
Project:	PRD NM DIRECTIONAL PLANS (NAD 1983)	MD Reference:	RKB=26.5' @ 3476.10ft
Site:	Saker 6_7	North Reference:	Grid
Well:	Saker 6_7 Fed Com 36H	Survey Calculation Method:	Minimum Curvature
Wellbore:	Wellbore #1		
Design:	Permitting Plan		

Planned Survey									
Measured Depth (ft)	Inclination (°)	Azimuth (°)	Vertical Depth (ft)	+N/-S (ft)	+E/-W (ft)	Vertical Section (ft)	Dogleg Rate (°/100ft)	Build Rate (°/100ft)	Turn Rate (°/100ft)
15,800.00	87.50	179.48	11,604.13	-4,454.28	100.14	4,455.28	0.00	0.00	0.00
15,900.00	87.50	179.48	11,608.49	-4,554.18	101.05	4,555.18	0.00	0.00	0.00
16,000.00	87.50	179.48	11,612.85	-4,654.08	101.95	4,655.08	0.00	0.00	0.00
16,100.00	87.50	179.48	11,617.22	-4,753.98	102.86	4,754.99	0.00	0.00	0.00
16,200.00	87.50	179.48	11,621.58	-4,853.88	103.76	4,854.89	0.00	0.00	0.00
16,300.00	87.50	179.48	11,625.94	-4,953.78	104.67	4,954.79	0.00	0.00	0.00
16,400.00	87.50	179.48	11,630.30	-5,053.68	105.58	5,054.69	0.00	0.00	0.00
16,500.00	87.50	179.48	11,634.66	-5,153.59	106.48	5,154.60	0.00	0.00	0.00
16,600.00	87.50	179.48	11,639.02	-5,253.49	107.39	5,254.50	0.00	0.00	0.00
16,700.00	87.50	179.48	11,643.38	-5,353.39	108.29	5,354.40	0.00	0.00	0.00
16,800.00	87.50	179.48	11,647.74	-5,453.29	109.20	5,454.31	0.00	0.00	0.00
16,900.00	87.50	179.48	11,652.10	-5,553.19	110.10	5,554.21	0.00	0.00	0.00
17,000.00	87.50	179.48	11,656.47	-5,653.09	111.01	5,654.11	0.00	0.00	0.00
17,100.00	87.50	179.48	11,660.83	-5,752.99	111.91	5,754.02	0.00	0.00	0.00
17,200.00	87.50	179.48	11,665.19	-5,852.89	112.82	5,853.92	0.00	0.00	0.00
17,300.00	87.50	179.48	11,669.55	-5,952.79	113.72	5,953.82	0.00	0.00	0.00
17,400.00	87.50	179.48	11,673.91	-6,052.69	114.63	6,053.73	0.00	0.00	0.00
17,500.00	87.50	179.48	11,678.27	-6,152.59	115.53	6,153.63	0.00	0.00	0.00
17,600.00	87.50	179.48	11,682.63	-6,252.49	116.44	6,253.53	0.00	0.00	0.00
17,700.00	87.50	179.48	11,686.99	-6,352.39	117.34	6,353.44	0.00	0.00	0.00
17,800.00	87.50	179.48	11,691.35	-6,452.30	118.25	6,453.34	0.00	0.00	0.00
17,900.00	87.50	179.48	11,695.72	-6,552.20	119.16	6,553.24	0.00	0.00	0.00
18,000.00	87.50	179.48	11,700.08	-6,652.10	120.06	6,653.15	0.00	0.00	0.00
18,100.00	87.50	179.48	11,704.44	-6,752.00	120.97	6,753.05	0.00	0.00	0.00
18,200.00	87.50	179.48	11,708.80	-6,851.90	121.87	6,852.95	0.00	0.00	0.00
18,300.00	87.50	179.48	11,713.16	-6,951.80	122.78	6,952.86	0.00	0.00	0.00
18,400.00	87.50	179.48	11,717.52	-7,051.70	123.68	7,052.76	0.00	0.00	0.00
18,500.00	87.50	179.48	11,721.88	-7,151.60	124.59	7,152.66	0.00	0.00	0.00
18,600.00	87.50	179.48	11,726.24	-7,251.50	125.49	7,252.57	0.00	0.00	0.00
18,700.00	87.50	179.48	11,730.60	-7,351.40	126.40	7,352.47	0.00	0.00	0.00
18,800.00	87.50	179.48	11,734.97	-7,451.30	127.30	7,452.37	0.00	0.00	0.00
18,900.00	87.50	179.48	11,739.33	-7,551.20	128.21	7,552.27	0.00	0.00	0.00
19,000.00	87.50	179.48	11,743.69	-7,651.10	129.11	7,652.18	0.00	0.00	0.00
19,100.00	87.50	179.48	11,748.05	-7,751.01	130.02	7,752.08	0.00	0.00	0.00
19,200.00	87.50	179.48	11,752.41	-7,850.91	130.93	7,851.98	0.00	0.00	0.00
19,300.00	87.50	179.48	11,756.77	-7,950.81	131.83	7,951.89	0.00	0.00	0.00
19,400.00	87.50	179.48	11,761.13	-8,050.71	132.74	8,051.79	0.00	0.00	0.00
19,500.00	87.50	179.48	11,765.49	-8,150.61	133.64	8,151.69	0.00	0.00	0.00
19,600.00	87.50	179.48	11,769.85	-8,250.51	134.55	8,251.60	0.00	0.00	0.00
19,700.00	87.50	179.48	11,774.22	-8,350.41	135.45	8,351.50	0.00	0.00	0.00
19,800.00	87.50	179.48	11,778.58	-8,450.31	136.36	8,451.40	0.00	0.00	0.00
19,900.00	87.50	179.48	11,782.94	-8,550.21	137.26	8,551.31	0.00	0.00	0.00
20,000.00	87.50	179.48	11,787.30	-8,650.11	138.17	8,651.21	0.00	0.00	0.00
20,100.00	87.50	179.48	11,791.66	-8,750.01	139.07	8,751.11	0.00	0.00	0.00
20,200.00	87.50	179.48	11,796.02	-8,849.91	139.98	8,851.02	0.00	0.00	0.00
20,300.00	87.50	179.48	11,800.38	-8,949.81	140.88	8,950.92	0.00	0.00	0.00
20,400.00	87.50	179.48	11,804.74	-9,049.72	141.79	9,050.82	0.00	0.00	0.00
20,500.00	87.50	179.48	11,809.10	-9,149.62	142.70	9,150.73	0.00	0.00	0.00
20,600.00	87.50	179.48	11,813.47	-9,249.52	143.60	9,250.63	0.00	0.00	0.00
20,700.00	87.50	179.48	11,817.83	-9,349.42	144.51	9,350.53	0.00	0.00	0.00
20,800.00	87.50	179.48	11,822.19	-9,449.32	145.41	9,450.44	0.00	0.00	0.00
20,900.00	87.50	179.48	11,826.55	-9,549.22	146.32	9,550.34	0.00	0.00	0.00
21,000.00	87.50	179.48	11,830.91	-9,649.12	147.22	9,650.24	0.00	0.00	0.00
21,100.00	87.50	179.48	11,835.27	-9,749.02	148.13	9,750.14	0.00	0.00	0.00

Oxy Inc.

Planning Report

Database:	HOPSPP	Local Co-ordinate Reference:	Well Saker 6_7 Fed Com 36H
Company:	ENGINEERING DESIGNS	TVD Reference:	RKB=26.5' @ 3476.10ft
Project:	PRD NM DIRECTIONAL PLANS (NAD 1983)	MD Reference:	RKB=26.5' @ 3476.10ft
Site:	Saker 6_7	North Reference:	Grid
Well:	Saker 6_7 Fed Com 36H	Survey Calculation Method:	Minimum Curvature
Wellbore:	Wellbore #1		
Design:	Permitting Plan		

Planned Survey									
Measured Depth (ft)	Inclination (°)	Azimuth (°)	Vertical Depth (ft)	+N/-S (ft)	+E/-W (ft)	Vertical Section (ft)	Dogleg Rate (°/100ft)	Build Rate (°/100ft)	Turn Rate (°/100ft)
21,200.00	87.50	179.48	11,839.63	-9,848.92	149.03	9,850.05	0.00	0.00	0.00
21,300.00	87.50	179.48	11,843.99	-9,948.82	149.94	9,949.95	0.00	0.00	0.00
21,400.00	87.50	179.48	11,848.35	-10,048.72	150.84	10,049.85	0.00	0.00	0.00
21,500.00	87.50	179.48	11,852.72	-10,148.62	151.75	10,149.76	0.00	0.00	0.00
21,600.00	87.50	179.48	11,857.08	-10,248.52	152.65	10,249.66	0.00	0.00	0.00
21,692.26	87.50	179.48	11,861.10	-10,340.69	153.49	10,341.83	0.00	0.00	0.00

Design Targets									
Target Name - hit/miss target - Shape	Dip Angle (°)	Dip Dir. (°)	TVD (ft)	+N/-S (ft)	+E/-W (ft)	Northing (usft)	Easting (usft)	Latitude	Longitude
FTP (Saker 6_7 Fed - plan misses target center by 203.53ft at 11337.36ft MD (11274.94 TVD, -34.54 N, 54.54 E) - Point	0.00	0.00	11,427.10	100.56	59.12	457,202.30	827,258.41	32° 15' 12.739394 N	103° 24' 30.367923
PBHL (Saker 6_7 Fed - plan hits target center - Point	0.00	0.00	11,861.10	-10,340.69	153.49	446,761.04	827,352.78	32° 13' 29.417721 N	103° 24' 30.316132

Formations						
Measured Depth (ft)	Vertical Depth (ft)	Name	Lithology	Dip (°)	Dip Direction (°)	
840.10	840.10	RUSTLER				
1,043.10	1,043.10	SALADO				
3,377.10	3,377.10	CASTILE				
5,231.10	5,231.10	DELAWARE				
5,281.10	5,281.10	BELL CANYON				
6,167.10	6,167.10	CHERRY CANYON				
7,530.10	7,530.10	BRUSHY CANYON				
8,727.10	8,727.10	BONE SPRING				
9,829.40	9,829.10	BONE SPRING 1ST				
10,283.14	10,280.10	BONE SPRING 2ND				
11,361.72	11,291.10	BONE SPRING 3RD				

Plan Annotations				
Measured Depth (ft)	Vertical Depth (ft)	Local Coordinates		Comment
		+N/-S (ft)	+E/-W (ft)	
9,440.00	9,440.00	0.00	0.00	Build 1°/100'
10,440.00	10,434.93	84.84	19.48	Hold 10° Tangent
10,768.50	10,758.44	140.44	32.24	KOP, Build & Turn 10°/100'
11,740.76	11,427.10	-399.07	63.39	Landing Point
21,692.26	11,861.10	-10,340.69	153.49	TD at 21692.26' MD



Project: PRD NM DIRECTIONAL PLANS (NAD 1983)
 Site: Saker 6_7
 Well: Saker 6_7 Fed Com 36H
 Wellbore: Wellbore #1
 Design: Permitting Plan

PROJECT DETAILS: NM DIRECTIONAL PLANS (NAD 1983)

Geodetic System: US State Plane 1983
 Datum: North American Datum 1983
 Ellipsoid: GRS 1980
 Zone: New Mexico Eastern Zone

System Datum: Mean Sea Level

WELL DETAILS: Saker 6_7 Fed Com 36H

+N/-S	+E/-W	Northing	Easting	Latitude	Longitude
0.00	0.00	457101.74	827199.29	32° 15' 11.749420 N	103° 24' 31.064402 W

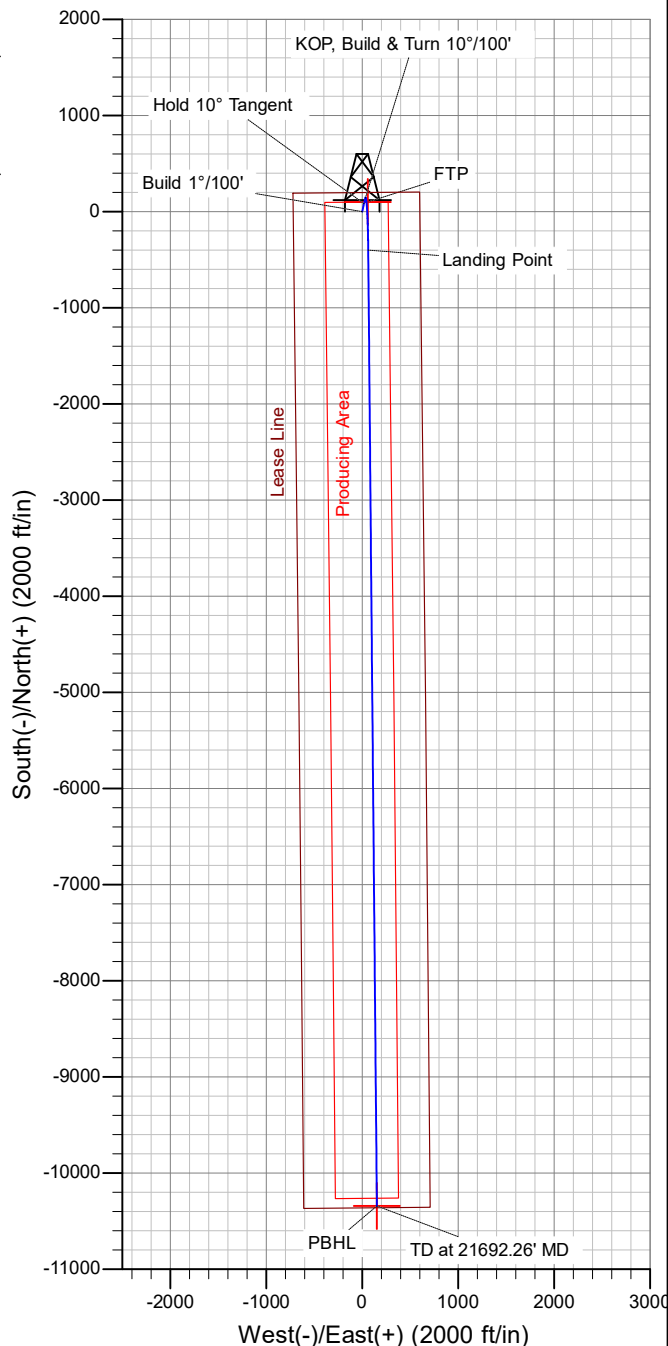
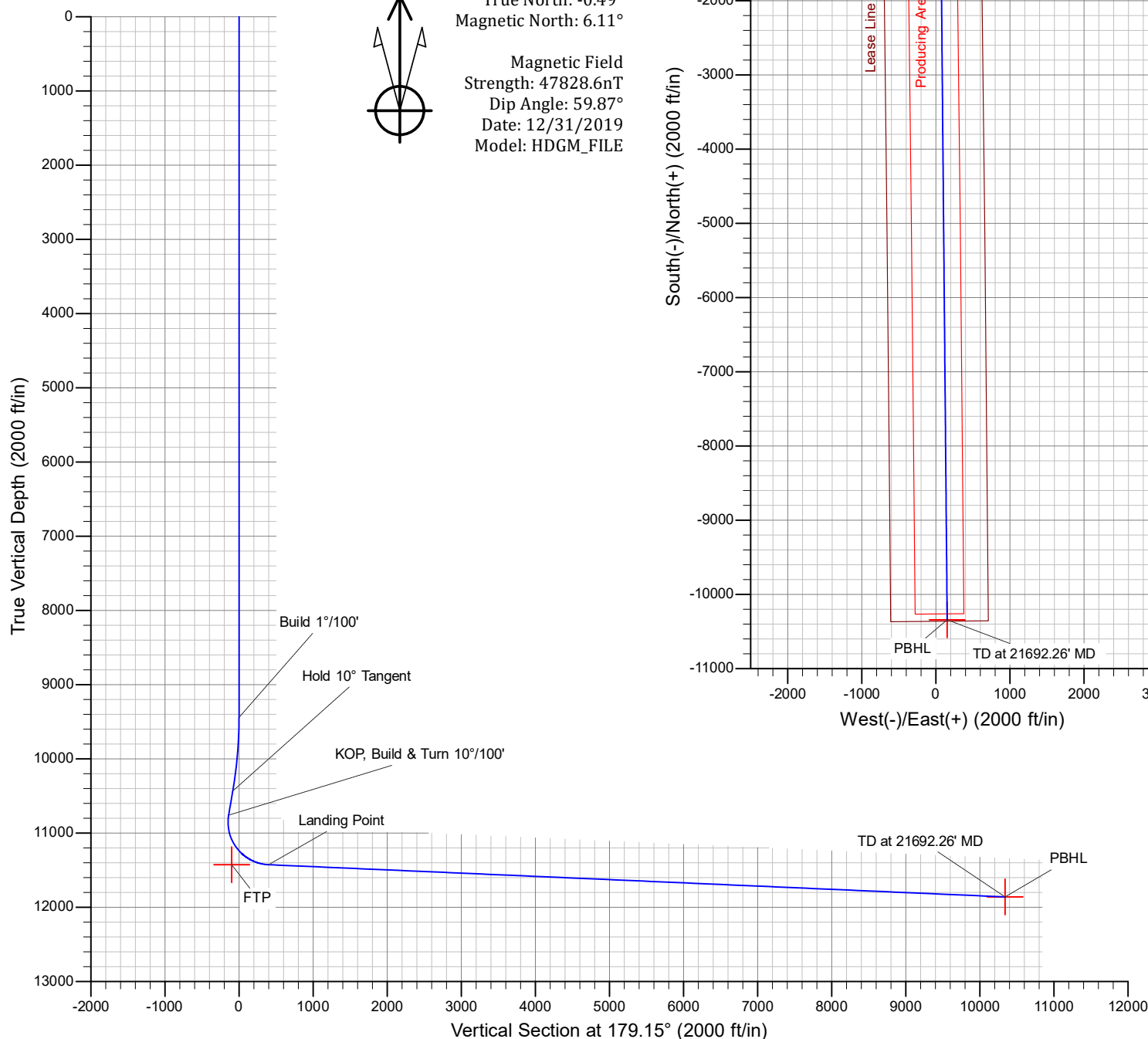
SECTION DETAILS

MD	Inc	Azi	TVD	+N/-S	+E/-W	Dleg	TFace	Vsect	Annotation
0.00	0.00	0.00	0.00	0.00	0.00	0.00	0.00	0.00	
9440.00	0.00	0.00	9440.00	0.00	0.00	0.00	0.00	0.00	Build 1°/100'
10440.00	10.00	12.93	10434.93	84.84	19.48	1.00	12.93	-84.54	Hold 10° Tangent
10768.50	10.00	12.93	10758.44	140.44	32.24	0.00	0.00	-139.94	KOP, Build & Turn 10°/100'
11740.76	87.50	179.48	11427.10	-399.06	63.39	10.00	166.45	399.96	Landing Point
21692.26	87.50	179.48	11861.10	-10340.69	153.49	0.00	0.00	10341.83	TD at 21692.26' MD



Azimuths to Grid North
 True North: -0.49°
 Magnetic North: 6.11°

Magnetic Field
 Strength: 47828.6nT
 Dip Angle: 59.87°
 Date: 12/31/2019
 Model: HDGM_FILE



Oxy USA Inc. - Saker 6_7 Fed Com 36H

Drill Plan

1. Geologic Formations

TVD of Target (ft):	11861	Pilot Hole Depth (ft):	
Total Measured Depth (ft):	21692	Deepest Expected Fresh Water (ft):	840

Delaware Basin

Formation	MD-RKB (ft)	TVD-RKB (ft)	Expected Fluids
Rustler	840	840	
Salado	1043	1043	Salt
Castile	3377	3377	Salt
Delaware	5231	5231	Oil/Gas/Brine
Bell Canyon	5281	5281	Oil/Gas/Brine
Cherry Canyon	6167	6167	Oil/Gas/Brine
Brushy Canyon	7530	7530	Losses
Bone Spring	8727	8727	Oil/Gas
Bone Spring 1st	9829	9829	Oil/Gas
Bone Spring 2nd	10283	10280	Oil/Gas
Bone Spring 3rd	11362	11291	Oil/Gas
Wolfcamp			Oil/Gas
Penn			Oil/Gas
Strawn			Oil/Gas

*H2S, water flows, loss of circulation, abnormal pressures, etc.

2. Casing Program

		MD		TVD					
Section	Hole Size (in)	From (ft)	To (ft)	From (ft)	To (ft)	Csg. OD (in)	Csg Wt. (ppf)	Grade	Conn.
Surface	14.75	0	900	0	900	10.75	45.5	J-55	BTC
Intermediate	9.875	0	10668	0	10658	7.625	26.4	L-80 HC	BTC
Production	6.75	0	21692	0	11861	5.5	20	P-110	DQX

All casing strings will be tested in accordance with Onshore Oil and Gas Order #2 III.B.1.h

*Oxy requests the option to run the 7.625” Intermediate II as a contingency string to be run only if severe hole conditions dictate an additional casing string necessary.

*Oxy requests the option to run production casing with DQX, TORQ DQW and/or TORQ SFW connections to accommodate hole conditions or drilling operations.

All Casing SF Values will meet or exceed those below			
SF Collapse	SF Burst	Body SF Tension	Joint SF Tension
1.125	1.2	1.4	1.4

Annular Clearance Variance Request

As per the agreement reached in the Oxy/BLM face-to-face meeting on Feb 22, 2018, Oxy requests permission to allow deviation from the 0.422” annular clearance requirement from Onshore Order #2 under the following conditions:

1. Annular clearance to meet or exceed 0.422” between intermediate casing ID and production casing coupling only on the first 500’ overlap between both casings.
2. Annular clearance less than 0.422” is acceptable for the curve and lateral portions of the production open hole section.

	Y or N
Is casing new? If used, attach certification as required in Onshore Order #1	Y
Does casing meet API specifications? If no, attach casing specification sheet.	Y
Is premium or uncommon casing planned? If yes attach casing specification sheet.	Y
Does the above casing design meet or exceed BLM’s minimum standards? If not provide justification (loading assumptions, casing design criteria).	Y
Will the intermediate pipe be kept at a minimum 1/3 fluid filled to avoid approaching the collapse pressure rating of the casing?	Y
Is well located within Capitan Reef?	N
If yes, does production casing cement tie back a minimum of 50’ above the Reef?	
Is well within the designated 4 string boundary.	
Is well located in SOPA but not in R-111-P?	N
If yes, are the first 2 strings cemented to surface and 3 rd string cement tied back 500’ into previous casing?	
Is well located in R-111-P and SOPA?	N
If yes, are the first three strings cemented to surface?	
Is 2 nd string set 100’ to 600’ below the base of salt?	
Is well located in high Cave/Karst?	N
If yes, are there two strings cemented to surface?	
(For 2 string wells) If yes, is there a contingency casing if lost circulation occurs?	
Is well located in critical Cave/Karst?	N
If yes, are there three strings cemented to surface?	

3. Cementing Program

Section	Stage	Slurry:	Capacities	ft^3/ft	Excess:	From	To	Sacks	Volume (ft^3)	Placement
Surface	1	Surface - Tail	OH x Csg	0.5563	100%	900	-	753	1001	Circulate
Int.	1	Intermediate 1S - Tail	OH x Csg	0.2148	5%	10,668	7,780	395	651	Circulate
Int.	2	Intermediate 2S - Tail BH	OH x Csg	0.2148	25%	7,780	900	962	1847	Bradenhead
Int.	2	Intermediate 2S - Tail BH	Csg x Csg	0.2338	0%	900	-	110	210	Bradenhead
Prod.	1	Production - Tail	OH x Csg	0.0835	15%	21,692	10,668	767	1059	Circulate
Prod.	1	Production - Tail	Csg x Csg	0.0999	0%	10,668	10,168	36	50	Circulate

Description	Density (lb/gal)	Yield (ft3/sk)	Water (gal/sk)	500psi Time (hh:mm)	Cmt. Class	Accelerator	Retarder	Dispersant	Salt
Surface - Tail	14.8	1.33	6.365	5:26	C	x			
Intermediate 1S - Tail	13.2	1.65	8.64	11:54	H	x	x	x	x
Intermediate 2S - Tail BH	12.9	1.92	10.41	23:10	C	x			
Production - Tail	13.2	1.38	6.686	3:39	H		x	x	x

Offline Cementing

Oxy requests a variance to cement the 9.625" and/or 7.625" intermediate casing strings offline in accordance to the approved variance, EC Tran 461365.

The summarized operational sequence will be as follows:

Run casing as per normal operations. While running casing, conduct negative pressure test and confirm integrity of the float equipment (float collar and shoe).

Land casing.

Fill pipe with kill weight fluid, and confirm well is static.

If well Oxy requests a variance to cement the 9.625" and/or 7.625" intermediate casing strings offline in accordance to the approved variance, EC Tran 461365.

The summarized operational sequence will be as follows:

1. Run casing as per normal operations. While running casing, conduct negative pressure test and confirm integrity of the float equipment (float collar and shoe).
2. Land casing.
3. Fill pipe with kill weight fluid, and confirm well is static.
 - a. If well is not static notify BLM and kill well.
 - b. Once well is static notify BLM with intent to proceed with nipple down and offline cementing.
4. Set and pressure test annular packoff.
5. After confirmation of both annular barriers and internal barriers, nipple down BOP and install cap flange. If any barrier fails to test, the BOP stack will not be nipped down until after the cement job is completed.
6. Skid rig to next well on pad.
7. Confirm well is static before removing cap flange.
8. If well is not static notify BLM and kill well prior to cementing or nipping up for further remediation.
9. Install offline cement tool.
10. Rig up cement equipment.
 - a. Notify BLM prior to cement job.
11. Perform cement job.
12. Confirm well is static and floats are holding after cement job.
13. Remove cement equipment, offline cement tools and install night cap with pressure gauge for monitoring.

Oxy requests permission to adjust the CBL requirement after bradenhead cement jobs, on 7-5/8" intermediate casings, as per the agreement reached in the OXY/BLM meeting on September 5, 2019.

Three string wells:

- CBL will be required on one well per pad
- If the pumped volume of cement is less than permitted in the APD, BLM will be notified and a CBL may be run
- Echometer will be used after bradenhead cement job to determine TOC before pumping top-out cement

4. Pressure Control Equipment

BOP installed and tested before drilling which hole?	Size?	Min. Required WP	Type		✓	Tested to:	Deepest TVD Depth (ft) per Section:
9.875" Hole	13-5/8"	3M	Annular		✓	70% of working pressure	10658
		3M	Blind Ram		✓	250 psi / 3000 psi	
			Pipe Ram				
			Double Ram		✓		
			Other*				
6.75" Hole	13-5/8"	5M	Annular		✓	70% of working pressure	11861
		5M	Blind Ram		✓	250 psi / 5000 psi	
			Pipe Ram				
			Double Ram		✓		
			Other*				

*Specify if additional ram is utilized

BOP/BOPE will be tested by an independent service company to 250 psi low and the high pressure indicated above per Onshore Order 2 requirements. The System may be upgraded to a higher pressure but still tested to the working pressure listed in the table above. If the system is upgraded all the components installed will be functional and tested.

Pipe rams will be operationally checked each 24 hour period. Blind rams will be operationally checked on each trip out of the hole. These checks will be noted on the daily tour sheets. Other accessories to the BOP equipment will include a Kelly cock and floor safety valve (inside BOP) and choke lines and choke

	Formation integrity test will be performed per Onshore Order #2.	
	On Exploratory wells or on that portion of any well approved for a 5M BOPE system or greater, a pressure integrity test of each casing shoe shall be performed. Will be tested in accordance with Onshore Oil and Gas Order #2 III.B.1.i.	
	A variance is requested for the use of a flexible choke line from the BOP to Choke Manifold. See attached for specs and hydrostatic test chart.	
	Y	Are anchors required by manufacturer?
	<p>A multibowl or a unionized multibowl wellhead system will be employed. The wellhead and connection to the BOPE will meet all API 6A requirements. The BOP will be tested per Onshore Order #2 after installation on the surface casing which will cover testing requirements for a maximum of 30 days. If any seal subject to test pressure is broken the system must be tested. We will test the flange connection of the wellhead with a test port that is directly in the flange. We are proposing that we will run the wellhead through the rotary prior to cementing surface casing as discussed with the BLM on October 8, 2015.</p> <p>See attached schematics.</p>	

BOP Break Testing Request

Oxy requests permission to adjust the BOP break testing requirements as per the agreement reached in the OXY/BLM meeting on September 5, 2019. A separate sundry will be sent prior to spud that reflects the pad based break testing plan.

BOP break test under the following conditions:

- After a full BOP test is conducted
- When skidding to drill an intermediate section where ICP is set into the third Bone Spring or shallower.
- When skidding to drill a production section that does not penetrate into the third Bone Spring or deeper.

If the kill line is broken prior to skid, two tests will be performed.

- 1) Wellhead flange, co-flex hose, kill line connections and upper pipe rams
- 2) Wellhead flange, HCR valve, check valve, upper pipe rams

If the kill line is not broken prior to skid, only one test will be performed.

5. Mud Program

Section	Depth - MD		Depth - TVD		Type	Weight (ppg)	Viscosity	Water Loss
	From (ft)	To (ft)	From (ft)	To (ft)				
Surface	0	900	0	900	Water-Based Mud	8.6 - 8.8	40-60	N/C
Intermediate	900	10668	900	10658	Saturated Brine-Based or Oil-Based Mud	8.0 - 10.0	35-45	N/C
Production	10668	21692	10658	11861	Water-Based or Oil-Based Mud	9.5 - 12	38-50	N/C

Sufficient mud materials to maintain mud properties and meet minimum lost circulation and weight increase requirements will be kept on location at all times. The following is a general list of products: Barite, Bentonite, Gypsum, Lime, Soda Ash, Caustic Soda, Nut Plug, Cedar Fiber, Cotton Seed Hulls, Drilling Paper, Salt Water Clay, CACL2. Oxy will use a closed mud system.

What will be used to monitor the loss or gain of fluid?	PVT/MD Totco/Visual Monitoring
---	--------------------------------

6. Logging and Testing Procedures

Logging, Coring and Testing.	
Yes	Will run GR from TD to surface (horizontal well – vertical portion of hole).
	Stated logs run will be in the Completion Report and submitted to the BLM.
No	Logs are planned based on well control or offset log information.
No	Drill stem test? If yes, explain
No	Coring? If yes, explain

Additional logs planned		Interval
No	Resistivity	
No	Density	
No	CBL	
Yes	Mud log	Bone Spring – TD
No	PEX	

7. Drilling Conditions

Condition	Specify what type and where?
BH Pressure at deepest TVD	7402 psi
Abnormal Temperature	No
BH Temperature at deepest TVD	175°F

Pump high viscosity sweeps as needed for hole cleaning. The mud system will be monitored visually/manually as well as with an electronic PVT. The necessary mud products for additional weight and fluid loss control will be on location at all times. Appropriately weighted mud will be used to isolate potential gas, oil, and water zones until such time as casing can be cemented into place for

Hydrogen Sulfide (H2S) monitors will be installed prior to drilling out the surface shoe. If H2S is detected in concentrations greater than 100 ppm, the operator will comply with the provisions of Onshore Oil and Gas Order #6. If Hydrogen Sulfide is encountered, measured values and formations will be provided to the BLM.	
N	H2S is present
Y	H2S Plan attached

8. Other facets of operation

	Yes/No
Will the well be drilled with a walking/skidding operation? If yes, describe. We plan to drill the 3 well pad in batch by section: all surface sections, intermediate sections and production sections. The wellhead will be secured with a night cap whenever the rig is not over the well.	Yes
Will more than one drilling rig be used for drilling operations? If yes, describe. Oxy requests the option to contract a Surface Rig to drill, set surface casing, and cement for this well. If the timing between rigs is such that Oxy would not be able to preset surface, the Primary Rig will MIRU and drill the well in its entirety per the APD. Please see the attached document for information on the spudder rig.	Yes

Total Estimated Cuttings Volume: 1604 bbls

- Attachments
- ☒ Directional Plan
 - ☒ H2S Contingency Plan
 - ☒ Flex III Attachments
 - ☒ Spudder Rig Attachment

9. Company Personnel

Name	Title	Office Phone	Mobile Phone
Garrett Granier	Drilling Engineer	713-513-6633	832-265-0581
William Turner	Drilling Engineer Supervisor	713-350-4951	661-817-4586
Simon Benavides	Drilling Superintendent	713-522-8652	281-684-6897
Diego Tellez	Drilling Manager	713-350-4602	713-303-4932

District I
1625 N. French Dr., Hobbs, NM 88240
Phone:(575) 393-6161 Fax:(575) 393-0720
District II
811 S. First St., Artesia, NM 88210
Phone:(575) 748-1283 Fax:(575) 748-9720
District III
1000 Rio Brazos Rd., Aztec, NM 87410
Phone:(505) 334-6178 Fax:(505) 334-6170
District IV
1220 S. St Francis Dr., Santa Fe, NM 87505
Phone:(505) 476-3470 Fax:(505) 476-3462

State of New Mexico
Energy, Minerals and Natural Resources
Oil Conservation Division
1220 S. St Francis Dr.
Santa Fe, NM 87505

CONDITIONS

Action 133199

CONDITIONS

Operator: OXY USA INC P.O. Box 4294 Houston, TX 772104294	OGRID: 16696
	Action Number: 133199
	Action Type: [C-103] NOI Change of Plans (C-103A)

CONDITIONS

Created By	Condition	Condition Date
pkautz	PREVIOUS COA'S APPLY	8/12/2022