

Well Name: LUSK DEEP UNIT	Well Location: T19S / R32E / SEC 18 / NESW /	County or Parish/State: LEA / NM
Well Number: 13	Type of Well: CONVENTIONAL GAS WELL	Allottee or Tribe Name:
Lease Number: NMLC068947	Unit or CA Name:	Unit or CA Number:
US Well Number: 300252497400X1	Well Status: Abandoned	Operator: COG OPERATING LLC

Subsequent Report

Sundry ID: 2630932

Type of Submission: Subsequent Report

Date Sundry Submitted: 08/26/2021

Date Operation Actually Began: 07/13/2021

Type of Action: Plug and Abandonment

Time Sundry Submitted: 01:51

**Actual Procedure:** 07/13/21 MIRU plugging equipment. Lock out/ tag out. 07/14/21 Pressure tested csg, held 1000 PSI. POH w/ rods & pump. Dug out cellar, NU hydraulic BOP. Could not release TAC. 07/15/21 RU power swivel, Pump'd 30 BBLS Brine H2O & worked to release TAC. POH w/ 12 stands. RIH w/ guage ring, tagged existing CIBP @ 9960' w/ 35' cmt cap on top. POH. Set 5 1/2" CIBP @ 9770'. Tag'd @ 9770' w/ wireline. 07/16/21 RIH w/ tbg & tag'd CIBP @ 9770'. Circulated hole w/ 210 BBLS MLF. Pressure tested csg, held 500 PSI. Spotted 25 sx class H cmt @ 9770-9544'. 07/19/21 Perf'd 5 1/2" csg @ 7025'. Sqz'd 75 sx class C cmt @ 7025-6825'. 07/20/21 Pressured up on plug to 500 PSI. Worked wireline down hole & tagged @ 6750'. Perf'd @ 4573'. Pump'd 75 BBSL Brine H2O to push out gas in 8 5/8". Pressured up to 1000 PSI. Spotted 50 sx class C cmt @ 4657-4157'. Pressured up to 500 PSI. WOC. 07/21/21 Tagged plug @ 3998'. Perf'd @ 2620'. Pump'd 75 BBLS H2O & circ'd gas out 8 5/8" csg. Sqz'd 50 sx class C cmt @ 2620-2420'. Pressured up on plug to 500 PSI. WOC. Tag'd plug @ 2360'. Perf'd @ 1455'. Sqz'd 50 sx class C cmt @ 1455-1255'. WOC. 07/22/21 Pressured up on plug to 500 PSI.Tag'd plug @ 1182'. Perf'd @ 828', had circulation in 13 3/8". Sqz'd 100 sx class C cmt @ 828-628 in 5 1/2, 85/8, & 13 3/8" csg. WOC. Pressured up on plug to 500 PSI. ND BOP, installed flange. Tag'd plug @ 590'. Perf'd @ 200'. Sqz'd 190 sx class C cmt @ 200' & circ'd to surface on 8 5/8" & 13 3/8" csg. 07/23/21 Verified cmt @ surface. Found drip on 13 3/8" csg. Pump'd down 13 3/8" to 2500 PSI. Bled of pressure. 07/26/21 Found leak in 5 1/2" csg. 07/27/21 Drilled out cmt to 217'. Tag'd cmt plug @ 490'. Circ'd well clean. Set pkr @ 250'. Perf'd @ 250'. Pressured up on perms to 1000 PSI on 5 1/2" csg. 07/28/21 Established an inj rate, sqz'd 50 sx class C cmt w/ 4% cacl @ 250' & pushed TOC to 200'. WOC. 07/29/21 Tag'd plug @ 130' but had drip on 13 3/8" csg. Drilled out cmt to 622'. Circ'd hole clean. 07/30/21 Drilled out to 778'. Perf'd csg @ 778'. Established inj rate @ 1000 PSI. Perf'd @ 300'. Established inj rate @ 500 PSI. Sqz'd 200 sx class C cmt @ 778' & circ'd to surface. Washed out to 60'. WOC. 08/02/21 Tag'd plug @ 170'. Drilled down to 312'. Perf'd @ 150'. Pressured up to 1500 PSI. Spotted 25 sx class C cmt @ 310-63'. WOC. 08/04/221 Tag'd @ 30'. Drilled to 310'. 08/05/21 Fell out of cmt @ 838'. 08/06/21 Sqz'd 60 sx class C

Accepted for Record Only

SUBJECT TO LIKE  
APPROVAL BY BLM

K7

NMOCD 8/19/22

<b>Well Name:</b> LUSK DEEP UNIT	<b>Well Location:</b> T19S / R32E / SEC 18 / NESW /	<b>County or Parish/State:</b> LEA / NM
<b>Well Number:</b> 13	<b>Type of Well:</b> CONVENTIONAL GAS WELL	<b>Allottee or Tribe Name:</b>
<b>Lease Number:</b> NMLC068947	<b>Unit or CA Name:</b>	<b>Unit or CA Number:</b>
<b>US Well Number:</b> 300252497400X1	<b>Well Status:</b> Abandoned	<b>Operator:</b> COG OPERATING LLC

cmt into existing perfs @ 828' & displaced to 750'. 08/09/21 Tag'd plug @ 512'. Perf'd @ 500', 450', & 400'. Spotted 50 sx class C cmt @ 512'. WOC. 08/10/21 Tag'd plug @ 75'. Rigged down & moved off to monitor for 2 weeks per Jim Amos w/ BLM's request.

SR Attachments

Actual Procedure

Plugging\_Record\_COP\_Lusk\_Deep\_Unit\_A\_\_20210826135105

Operator Certification

I certify that the foregoing is true and correct. Title 18 U.S.C. Section 1001 and Title 43 U.S.C. Section 1212, make it a crime for any person knowingly and willfully to make to any department or agency of the United States any false, fictitious or fraudulent statements or representations as to any matter within its jurisdiction. Electronic submission of Sundry Notices through this system satisfies regulations requiring a submission of Form 3160-5 or a Sundry Notice.

Operator Electronic Signature: RUTH SHOCKENCY

Signed on: AUG 26, 2021 01:51 PM

Name: COG OPERATING LLC

Title: Regulatory Analyst

Street Address: 600 W. ILLINOIS AVE.

City: MIDLAND State: TX

Phone: (575) 703-8321

Email address: RUTH.SHOCKENCY@CONOCOPHILLIPS.COM

Field Representative

Representative Name:

Street Address:

City: State: Zip:

Phone:

Email address:

BLM Point of Contact

BLM POC Name: JAMES A AMOS

BLM POC Title: Acting Assistant Field Manager

BLM POC Phone: 5752345927

BLM POC Email Address: jamos@blm.gov

Disposition: Accepted

Disposition Date: 08/30/2021

Signature: James A. Amos

# Plug Abandonment Subsequent Report

<b>OPERATOR NAME:</b>	COG Operating, LLC
<b>LEASE NO.:</b>	NMLC68947
<b>WELL NAME &amp; NO.:</b>	Lusk Deep Unit A #13
<b>US WELL NUMBER:</b>	30-025-24974
<b>LOCATION:</b>	Sec 18, T19S, R32E 1980 FSL, 1980 FWL
<b>COUNTY:</b>	Lea County, NM

07/13/21 MIRU plugging equipment. Lock out/ tag out. 07/14/21 Pressure tested csg, held 1000 PSI. POH w/ rods & pump. Dug out cellar, NU hydraulic BOP. Could not release TAC. 07/15/21 RU power swivel, Pump'd 30 BBLS Brine H2O & worked to release TAC. POH w/ 12 stands. RIH w/ guage ring, tagged existing CIBP @ 9960' w/ 35' cmt cap on top. POH. Set 5 1/2" CIBP @ 9770'. Tag'd @ 9770' w/ wireline. 07/16/21 RIH w/ tbg & tag'd CIBP @ 9770'. Circulated hole w/ 210 BBLS MLF. Pressure tested csg, held 500 PSI. Spotted 25 sx class H cmt @ 9770-9544'. 07/19/21 Perf'd 5 1/2" csg @ 7025'. Sqz'd 75 sx class C cmt @ 7025-6825'. 07/20/21 Pressured up on plug to 500 PSI. Worked wireline down hole & tagged @ 6750'. Perf'd @ 4573'. Pump'd 75 BBSL Brine H2O to push out gas in 8 5/8". Pressured up to 1000 PSI. Spotted 50 sx class C cmt @ 4657-4157'. Pressured up to 500 PSI. WOC. 07/21/21 Tagged plug @ 3998'. Perf'd @ 2620'. Pump'd 75 BBLS H2O & circ'd gas out 8 5/8" csg. Sqz'd 50 sx class C cmt @ 2620-2420'. Pressured up on plug to 500 PSI. WOC. Tag'd plug @ 2360'. Perf'd @ 1455'. Sqz'd 50 sx class C cmt @ 1455-1255'. WOC. 07/22/21 Pressured up on plug to 500 PSI. Tag'd plug @ 1182'. Perf'd @ 828', had circulation in 13 3/8". Sqz'd 100 sx class C cmt @ 828-628 in 5 1/2, 85/8, & 13 3/8" csg. WOC. Pressured up on plug to 500 PSI. ND BOP, installed flange. Tag'd plug @ 590'. Perf'd @ 200'. Sqz'd 190 sx class C cmt @ 200' & circ'd to surface on 8 5/8" & 13 3/8" csg. 07/23/21 Verified cmt @ surface. Found drip on 13 3/8" csg. Pump'd down 13 3/8" to 2500 PSI. Bled of pressure. 07/26/21 Found leak in 5 1/2" csg. 07/27/21 Drilled out cmt to 217'. Tag'd cmt plug @ 490'. Circ'd well clean. Set pkr @ 250'. Perf'd @ 250'. Pressured up on perms to 1000 PSI on 5 1/2" csg. 07/28/21 Established an inj rate, sqz'd 50 sx class C cmt w/ 4% cacl @ 250' & pushed TOC to 200'. WOC. 07/29/21 Tag'd plug @ 130' but had drip on 13 3/8" csg. Drilled out cmt to 622'. Circ'd hole clean. 07/30/21 Drilled out to 778'. Perf'd csg @ 778'. Established inj rate @ 1000 PSI. Perf'd @ 300'. Established inj rate @ 500 PSI. Sqz'd 200 sx class C cmt @ 778' & circ'd to surface. Washed out to 60'. WOC. 08/02/21 Tag'd plug @ 170'. Drilled down to 312'. Perf'd @ 150'. Pressured up to 1500 PSI. Spotted 25 sx class C cmt @ 310-63'. WOC. 08/04/21 Tag'd @ 30'. Drilled to 310'. 08/05/21 Fell out of cmt @ 838'. 08/06/21 Sqz'd 60 sx class C cmt into existing perms @ 828' & displaced to 750'. 08/09/21 Tag'd plug @ 512'. Perf'd @ 500', 450', & 400'. Spotted 50 sx class C cmt @ 512'. WOC. 08/10/21 Tag'd plug @ 75'. Rigged down & moved off to monitor for 2 weeks per Jim Amos w/ BLM's request.

# Plugged WBD

CONCHO OPERATING LLC

MARBOB ENERGY CORPORATION

## LUSK DEEP UNIT A #13

1980 FSL 1980 FWL, SEC. 18-19S-32E, UNIT K

30-025-24974, LUSK; BONE SPRING

LEA COUNTY

PLUGGED

SPUD- 4/11/1975

COMP- 6/22/1975

GL: 3587'

KB - 3610'

### TOPS:

BS 6973'

3BSS 9842'

WC 10224'

WC LIME 10360

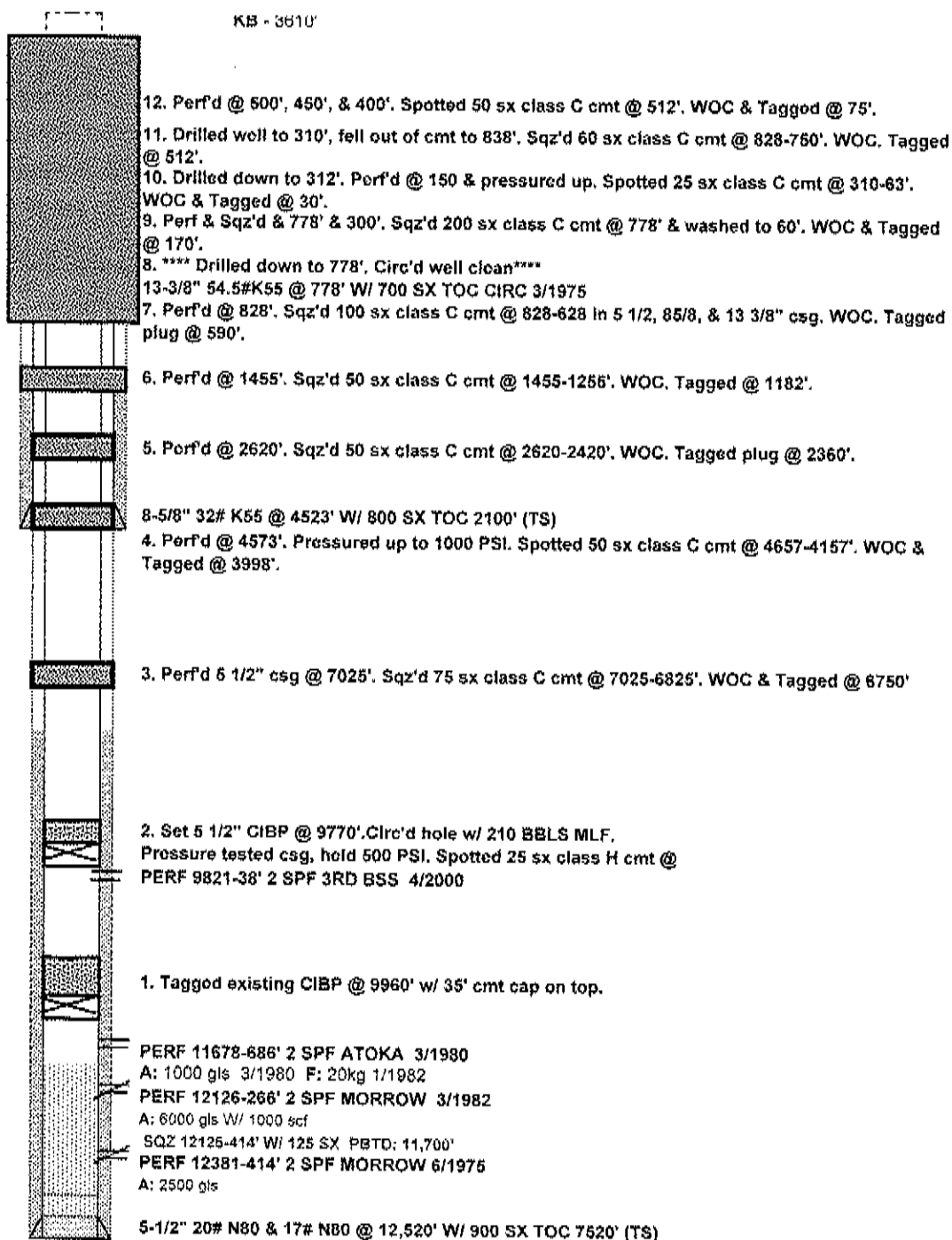
STRWN 11,111

ATOKA 11,330

MRW LIME 11,680

MRW SMD 11,995

BRNT 12,380



PBTD -9975'

PBTD -12,485 (ORIG)

TD - 12,520'

UPDATED: 11/21/2014 KRA

## Current WBD

## CONCHO OPERATING LLC

MARBOB ENERGY CORPORATION

## LUSK DEEP UNIT A #13

1980 FSL 1980 FWL, SEC. 18-19S-32E, UNIT K

30-025-24974, LUSK; BONE SPRING

LEA COUNTY

SPUD- 4/11/1975

COMP- 6/22/1975

GL: 3587'

KB - 3610'

## TOPS:

BS 6973'

3BSS 9842'

WC 10224'

WC LIME 10360

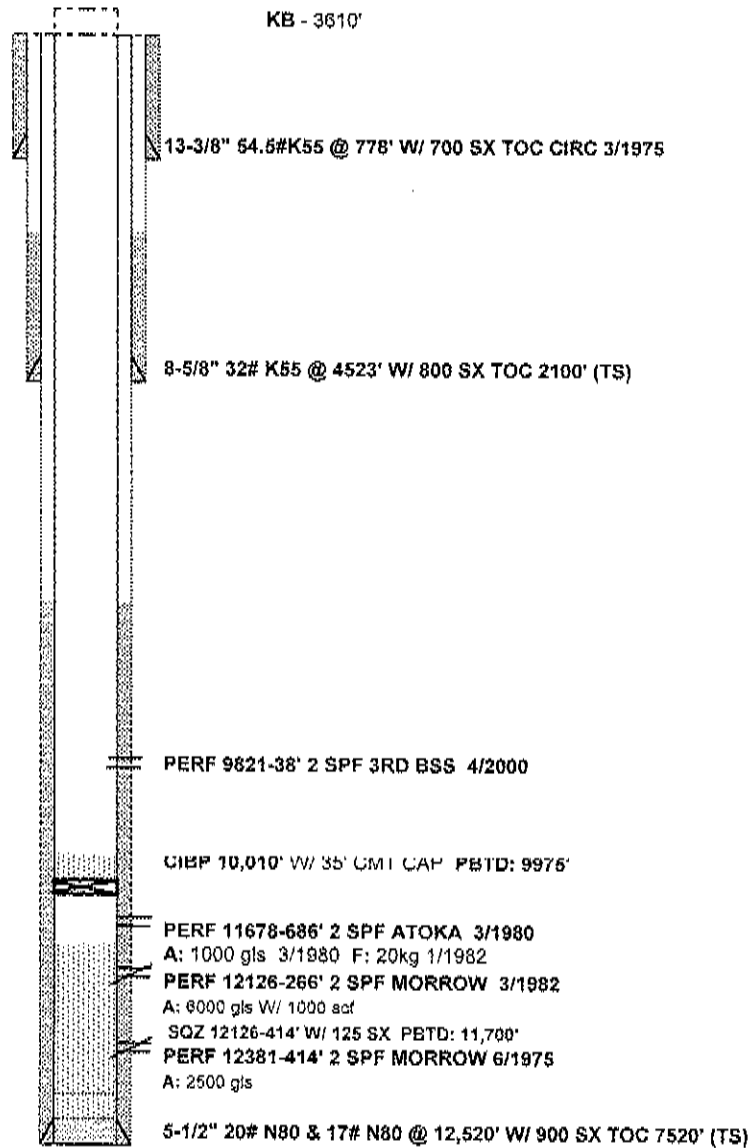
STRWN 11,111

ATOKA 11,330

MRW LIME 11,680

MRW SMD 11,998

BRNT 12,380



PBTD -9975'

PBTD -12,485 (ORIG)

TD - 12,520'

UPDATED: 11/21/2014 KRA

**District I**  
1625 N. French Dr., Hobbs, NM 88240  
Phone:(575) 393-6161 Fax:(575) 393-0720  
**District II**  
811 S. First St., Artesia, NM 88210  
Phone:(575) 748-1283 Fax:(575) 748-9720  
**District III**  
1000 Rio Brazos Rd., Aztec, NM 87410  
Phone:(505) 334-6178 Fax:(505) 334-6170  
**District IV**  
1220 S. St Francis Dr., Santa Fe, NM 87505  
Phone:(505) 476-3470 Fax:(505) 476-3462

**State of New Mexico**  
**Energy, Minerals and Natural Resources**  
**Oil Conservation Division**  
**1220 S. St Francis Dr.**  
**Santa Fe, NM 87505**

COMMENTS  
  
Action 64669

COMMENTS

Operator: COG OPERATING LLC 600 W Illinois Ave Midland, TX 79701	OGRID: 229137
	Action Number: 64669
	Action Type: [C-103] Sub. Plugging (C-103P)

COMMENTS

Created By	Comment	Comment Date
plmartinez	DATA ENTRY PM	8/19/2022

**District I**  
1625 N. French Dr., Hobbs, NM 88240  
Phone:(575) 393-6161 Fax:(575) 393-0720  
**District II**  
811 S. First St., Artesia, NM 88210  
Phone:(575) 748-1283 Fax:(575) 748-9720  
**District III**  
1000 Rio Brazos Rd., Aztec, NM 87410  
Phone:(505) 334-6178 Fax:(505) 334-6170  
**District IV**  
1220 S. St Francis Dr., Santa Fe, NM 87505  
Phone:(505) 476-3470 Fax:(505) 476-3462

**State of New Mexico**  
**Energy, Minerals and Natural Resources**  
**Oil Conservation Division**  
**1220 S. St Francis Dr.**  
**Santa Fe, NM 87505**

CONDITIONS  
  
Action 64669

CONDITIONS

Operator: COG OPERATING LLC 600 W Illinois Ave Midland, TX 79701	OGRID: 229137
	Action Number: 64669
	Action Type: [C-103] Sub. Plugging (C-103P)

CONDITIONS

Created By	Condition	Condition Date
kfortner	Like approval from BLM	8/19/2022