

Office
 District I – (575) 393-6161
 1625 N. French Dr., Hobbs, NM 88240
 District II – (575) 748-1283
 811 S. First St., Artesia, NM 88210
 District III – (505) 334-6178
 1000 Rio Brazos Rd., Aztec, NM 87410
 District IV – (505) 476-3460
 1220 S. St. Francis Dr., Santa Fe, NM
 87505

State of New Mexico
 Energy, Minerals and Natural Resources

Form C-103
 Revised July 18, 2013

OIL CONSERVATION DIVISION
 1220 South St. Francis Dr.
 Santa Fe, NM 87505

WELL API NO. 30-025-31455
5. Indicate Type of Lease STATE <input checked="" type="checkbox"/> FEE <input type="checkbox"/>
6. State Oil & Gas Lease No.
7. Lease Name or Unit Agreement Name West Lovington Unit
8. Well Number 90
9. OGRID Number 241333
10. Pool name or Wildcat W. Lovington Upper San Andres

SUNDRY NOTICES AND REPORTS ON WELLS (DO NOT USE THIS FORM FOR PROPOSALS TO DRILL OR TO DEEPEN OR PLUG BACK TO A DIFFERENT RESERVOIR. USE "APPLICATION FOR PERMIT" (FORM C-101) FOR SUCH PROPOSALS.)	
1. Type of Well: Oil Well <input checked="" type="checkbox"/> Gas Well <input type="checkbox"/> Other <input type="checkbox"/>	
2. Name of Operator CHEVRON MIDCONTINENT, L.P.	
3. Address of Operator 6301 Deauville BLVD, Midland TX 79706	
4. Well Location Unit Letter <u>G</u> : <u>1335</u> feet from the <u>EAST</u> line and <u>2580</u> feet from the <u>NORTH</u> line Section <u>7</u> Township <u>17S</u> Range <u>36 EAST</u> NMPM County <u>LEA</u>	
11. Elevation (Show whether DR, RKB, RT, GR, etc.)	

12. Check Appropriate Box to Indicate Nature of Notice, Report or Other Data

NOTICE OF INTENTION TO:	SUBSEQUENT REPORT OF:
PERFORM REMEDIAL WORK <input type="checkbox"/>	REMEDIAL WORK <input type="checkbox"/>
TEMPORARILY ABANDON <input type="checkbox"/>	ALTERING CASING <input type="checkbox"/>
PULL OR ALTER CASING <input type="checkbox"/>	COMMENCE DRILLING OPNS. <input type="checkbox"/>
DOWNHOLE COMMINGLE <input type="checkbox"/>	CASING/CEMENT JOB <input type="checkbox"/>
CLOSED-LOOP SYSTEM <input type="checkbox"/>	PNR <input type="checkbox"/>
OTHER: <input type="checkbox"/>	OTHER: <input type="checkbox"/>

13. Describe proposed or completed operations. (Clearly state all pertinent details, and give pertinent dates, including estimated date of starting any proposed work). SEE RULE 19.15.7.14 NMAC. For Multiple Completions: Attach wellbore diagram of proposed completion or recompletion.

4/29/2022: Move onto location
 5/2/2022: L/D fiberglass rods. Release TAC and TOH with 80 joints of tubing.
 5/3/2022: Continue TOH with remaining tubing string. Set CIBP at 4650'. Spot 100 sacks Class C cement from from 4650' to 3663'. Achieved successful pressure test.
 5/4/2022: Spot 25 sacks Class C cement from 3087' to 2847'.
 Spot 30 sacks Class C cement from 2093' to 1797'.
 Perforate at 1410'. No injection up to 1000 psi.
 Spot 30 sacks Class C cement from 1410' to 1110'.
 Perforate at 200'. Squeeze 100 sacks Class C cement from 200' to surface.
 Rig down move off location

Spud Date:

Rig Release Date:

I hereby certify that the information above is true and complete to the best of my knowledge and belief.

SIGNATURE Hayes Thibodeaux TITLE Engineer DATE 7/20/2022

Type or print name Hayes Thibodeaux E-mail address: Hayes.Thibodeaux@chevron.com PHONE: 281-726-9683

For State Use Only

APPROVED BY: Kerry Fortner TITLE Compliance Officer A DATE 8/22/22

Conditions of Approval (if any):



EMC Ops Summary - External

Well Name WEST LOVINGTON UNIT 090	Field Name Lovington	Lease West Lovington Unit	Area Central		
Business Unit EMC	County/ Parish Lea	Global Metrics Region EMC US East	Surface UWI 3002531455		
Basic Well Data					
Current RKB Elevation 3,916.00, <elvdttmstart>	Original RKB Elevation (ft) 3,916.00	Latitude (°) 32° 50' 57.696" N	Longitude (°) 103° 23' 21.156" W		
Phases					
Actual Start Date	Actual End Date	Phase 1	Phase 2	Time Log Hrs (hr)	Percent Problem Time (%)
2/8/2022 07:00	2/8/2022 17:00	PREP	FAC	10.00	
4/29/2022 14:45	4/29/2022 15:00	MOB	MOVEON	0.25	
4/29/2022 15:00	5/3/2022 16:30	ABAN	TBGPULL	23.50	
5/3/2022 16:30	5/4/2022 18:00	ABAN	CMTPLUG	13.00	
5/12/2022 13:00	5/12/2022 17:00	REST	FAC	4.00	
Start Date		Summary			
2/8/2022		HSE meeting, hazard hunt, wellhead gas/pressure checks, reviewed dig plan, performed location line sweep, unload equipment, hand dug around wellhead to expose old plumbing, removed risers, made up new assemblies, installed/painted new valves as per code, backfilled excavation, hot bolted wellhead flange, cleared location of brrush & mesquite trees, load/secured equipment, location is prepped.			
4/29/2022		Move on from WLU 99. Complete JSA and safety meeting, establish muster areas, and complete permits. Offload equipment from flatbed and spot in trailers. R/U. Secure location for night.			
5/2/2022		JSA and safety meeting. R/U pump, hard lines w/ check, and return lines. Check pressures - 250 psi both tubing and production casing, 0 psi surface casing. Bleed down tubing and production casing, small water flow, not gassy. Pressure test tubing - failed tubing test, pumped 20 bbls 10 ppg brine w/ scavenger down tubing. . R/U workfloor and rod equipment. L/D 62 1" fiberglass rods, 92 7/8" steel rods. R/D floor, function test BOP. Crew lunch break. N/D tree. N/U 7-1/16" 5K BOP. Pressure test BOP 250 psi for 5 minutes, 1000 psi for 10 minutes, passed. R/U work floor and tubing equipment, release TAC. TOH L/D w/ 80 jts 2-7/8" tubing. Secure well for night.			
5/3/2022		JSA and safety meeting. Check pressures - 200 psi on tubing and production casing, 0 psi on surface casing. Circulate 48 bbls w/ scavenger. TOH 83 jts 2-7/8" tubing, tripped 162 jts total. R/U wireline and make up shorty setting tool. RIH set CIBP @ 4650'. POOH, R/D wireline. Crew lunch break. Change BOP rams to 2-3/8". Load racks and TIH w/ 149 jts 2-3/8" tubing. Tagged CIBP @ 4650'. Circulate 40 bbls 10 ppg brine. Pressure test casing and CIBP 1000 psi held good. Mix and spot 100 sx class C 1.32 yield 14.8 ppg cement @ 4650'-3663'. NMOCD waived WOC and tag due to passing pressure test on casing and CIBP. L/D 50 jts 2-3/8" tubing, EOT @ 3091. Revrse out 15 bbls clean. Secure well for night.			
5/4/2022		JSA and safety meeting. Check pressures - 0 psi all strings. EOT @ 3087'. Spot 25 sx class C 1.32 yield 14.8 ppg cement @ 3087'-2847'. TOH L/D 32 jts 2-3/8" tubing, EOT @ 2093'. Mix and spot 30 sx class C 1.32 yield 14.8 ppg cement @ 2093'-1797'. L/D 22 jts 2-3/8" tubing EOT @ 850'. R/U wireline and make up 4 spf 0 deg phased DP. RIH and perf @ 1410'. Attempt injection, held 1000 psi for 15 minutes. TIh EOT @ 1410'. Mix and spot 22 bbls salt gel MLF to 200'. Recieved approval to drop and spot from NMOCD. Mix and spot 30 sx class C 1.32 yield 14.8 ppg cement @ 1410'-1110'. TOH 38 jts 2-3/8" tubing, no tubing left in hole. Crew lunch break. Bubble test production and surface casing, pass on both. R/U wireline and make up 4 spf 0 deg phased DP. RIH and perf @ 200'. Establish injection 15 bbls 10 ppg brine 1.5 bpm @ 400 psi. Did not break circulation. L/D tbg in derrick, R/D tubing equipment, R/D work floor. N/D 7-1/16" BOP. N/U B1. Mix and squeeze 100 sx class C 1.32 yield 14.8 ppg cement @ 200'-0' (100% excess). Did not break circulation and surface bubble test remained unchanged. Broke down formation during plug, pumped 2.5 bpm @ 400 psi. SI w/ 400 psi. R/D rig and associated equipment. R/D pump and break down hardlines. Move out, head to WLU 23.			
5/12/2022		HSE meeting, hazard hunt, wellhead gas/pressure checks, reviewed dig plan, performed location line sweep, removed recycable parts, unload/fueled/greased equipment, excavate/cut anchors, backfilled diggings, excavate bell hole around wellhead, slopped excavation, built access ramp, rigged up oscillating saw, cut wellhead, removed saw from hole, toppled/removed wellhead from excavation, installed marking pole/sunotube/poured concrete, backfilled excavation, picked up metal scrap, dropped scrap at gathering point, load/secured equipment, location is restored.			

As Plugged Schematic

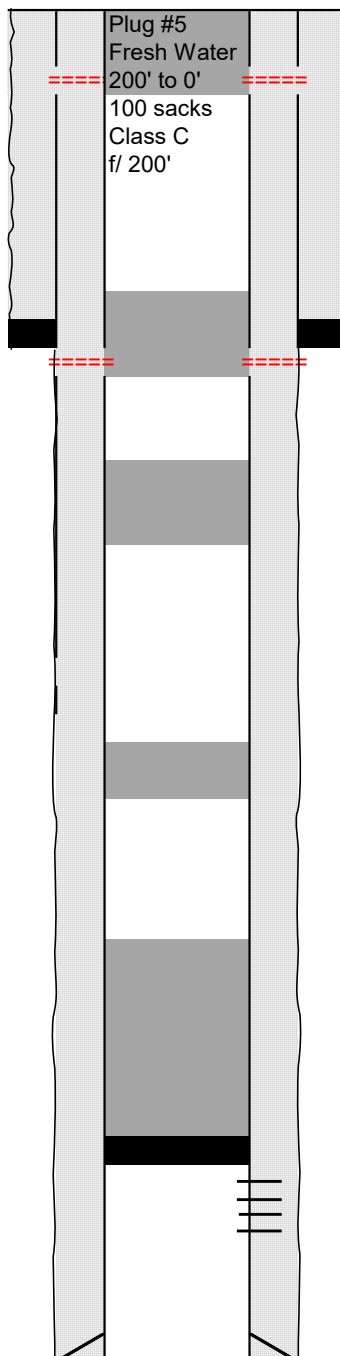
Created:	04/25/19	By:		Well #:	90	St. Lse:	
Updated:		By:		API	30-025-31455		
Lease:	West Lovington Unit			Unit Ltr.:	G	Section:	7
Field:	West Lovington Unit			TSHR/Rng:	17S-36E		
Surf. Loc.:	2580 FNL & 1335 FEL			Unit Ltr.:		Section:	
Bot. Loc.:				TSHR/Rng:			
County:	Lea	St.:	NM	Directions:	Lovington, NM		
Status:				Cheyno:	OS6087		

Surface Casing

Size: 8-5/8"
 Wt., Grd.: 24#
 Depth: 1310'
 Sxs Cmt: 500
 Circulate: Yes
 TOC: Surface
 Hole Size: 12-1/4"

Production Casing

Size: 5-1/2"
 Wt., Grd.: 15.5#
 Depth: 5230'
 Sxs Cmt: 1250
 Circulate: Yes
 TOC: Surface
 Hole Size: 7-7/8"



KB: _____
 DF: _____
 GL: 3,900
 Ini. Spud: 03/28/92
 Ini. Comp.: 05/01/92

Plug #4
 Perforate at 1410', 1000 psi no injection
 Cmt from 1410' to 1110'
 30 sacks Class C cement

Plug #3
 Isolate Salt Top, Rustler
 Cmt from 2093' to 1797'
 30 sacks Class C cement

Plug #2
 Isolate Yates, Salt Bottom
 Cmt from 3087' to 2847'
 25 sacks Class C cement

Barrier #1: Isolate San Andres, Grayburg, Queen
 CIBP set at 4650'
 Cmt from 4650' to 3663'
 100 sacks Class C cement

Perfs: 4750' - 5154'

PBTD (est.): 5,189
 TD: 5,230

District I
1625 N. French Dr., Hobbs, NM 88240
Phone:(575) 393-6161 Fax:(575) 393-0720

District II
811 S. First St., Artesia, NM 88210
Phone:(575) 748-1283 Fax:(575) 748-9720

District III
1000 Rio Brazos Rd., Aztec, NM 87410
Phone:(505) 334-6178 Fax:(505) 334-6170

District IV
1220 S. St Francis Dr., Santa Fe, NM 87505
Phone:(505) 476-3470 Fax:(505) 476-3462

State of New Mexico
Energy, Minerals and Natural Resources
Oil Conservation Division
1220 S. St Francis Dr.
Santa Fe, NM 87505

COMMENTS

Action 127218

COMMENTS

Operator: CHEVRON U S A INC 6301 Deauville Blvd Midland, TX 79706	OGRID: 4323
	Action Number: 127218
	Action Type: [C-103] Sub. Plugging (C-103P)

COMMENTS

Created By	Comment	Comment Date
plmartinez	DATA ENTRY PM	8/23/2022

District I
1625 N. French Dr., Hobbs, NM 88240
Phone:(575) 393-6161 Fax:(575) 393-0720
District II
811 S. First St., Artesia, NM 88210
Phone:(575) 748-1283 Fax:(575) 748-9720
District III
1000 Rio Brazos Rd., Aztec, NM 87410
Phone:(505) 334-6178 Fax:(505) 334-6170
District IV
1220 S. St Francis Dr., Santa Fe, NM 87505
Phone:(505) 476-3470 Fax:(505) 476-3462

State of New Mexico
Energy, Minerals and Natural Resources
Oil Conservation Division
1220 S. St Francis Dr.
Santa Fe, NM 87505

CONDITIONS

Action 127218

CONDITIONS

Operator: CHEVRON U S A INC 6301 Deauville Blvd Midland, TX 79706	OGRID: 4323
	Action Number: 127218
	Action Type: [C-103] Sub. Plugging (C-103P)

CONDITIONS

Created By	Condition	Condition Date
kfortner	Need C103Q and marker pics to release	8/22/2022