

Well Name: EL PASO FEDERAL	Well Location: T21S / R26E / SEC 1 / LOT 8 /	County or Parish/State: EDDY / NM
Well Number: 3H	Type of Well: CONVENTIONAL GAS WELL	Allottee or Tribe Name:
Lease Number: NMNM911	Unit or CA Name: EL PASO FEDERAL COM #3	Unit or CA Number: NMNM71962
US Well Number: 3001521307	Well Status: Abandoned	Operator: FASKEN OIL & RANCH LIMITED

Accepted for record – NMOCD gc9/8/2022

Subsequent Report

Sundry ID: 2689321

Type of Submission: Subsequent Report	Type of Action: Plug and Abandonment
Date Sundry Submitted: 08/26/2022	Time Sundry Submitted: 10:03
Date Operation Actually Began: 08/03/2022	

Actual Procedure: See attached P/A drilling report

SR Attachments

Actual Procedure

El_Paso_Federal_3_PA_procedure_done_8_18_2022_20220826100253.pdf

Well Name: EL PASO FEDERAL

Well Location: T21S / R26E / SEC 1 / LOT 8 /

County or Parish/State: EDDY / NM

Well Number: 3H

Type of Well: CONVENTIONAL GAS WELL

Allottee or Tribe Name:

Lease Number: NMNM911

Unit or CA Name: EL PASO FEDERAL COM #3

Unit or CA Number: NMNM71962

US Well Number: 3001521307

Well Status: Abandoned

Operator: FASKEN OIL & RANCH LIMITED

Operator

I certify that the foregoing is true and correct. Title 18 U.S.C. Section 1001 and Title 43 U.S.C. Section 1212, make it a crime for any person knowingly and willfully to make to any department or agency of the United States any false, fictitious or fraudulent statements or representations as to any matter within its jurisdiction. Electronic submission of Sundry Notices through this system satisfies regulations requiring a

Operator Electronic Signature: VIOLA VASQUEZ

Signed on: AUG 26, 2022 10:01 AM

Name: FASKEN OIL & RANCH LIMITED

Title: Regulatory Analyst

Street Address: 6101 HOLIDAY HILL ROAD

City: MIDLAND State: TX

Phone: (432) 687-1777

Email address: VIOLAV@FORL.COM

Field

Representative Name:

Street Address:

City: State: Zip:

Phone:

Email address:

BLM Point of Contact

BLM POC Name: JAMES A AMOS

BLM POC Title: Acting Assistant Field Manager

BLM POC Phone: 5752345927

BLM POC Email Address: jamos@blm.gov

Disposition: Accepted

Disposition Date: 08/30/2022

Signature: James A. Amos

Fasken Oil and Ranch, LTD.**Combined Daily Operations Report**

1/1/2020 thru 9/1/2022

Page 1

Printed 9/1/2022

El Paso Federal # 3

Well ID: EL0503

1664 FNL & 660 FEL Section 1, Township T21S

Eddy Co., NM

Aug 3, 2022 Wednesday

SICP-580 psi, SITP-1000 psi. RUPU BCM Rig No. 7. ND wellhead connections, started bleeding down well and pressured down to 50 psi. Flowed tbg down for 3 hours. Tubing flowing @ 100 psi (mainly gas) and made 15 btf into frac tank. Eddy County BLM was contacted. Receive a load of 10# brine. RU BCM cementer pump truck on tubing and pumped 40 bbl 10# brine down tbg and tbg went on a vac. NDWH and NU manual BOP. RU on tubing, worked pkr for 1 hour and released Arrowset 1K 10K packer. RIW past pkr setting @ 9336'. POW and LD 8 jts 2-3/8" 4.7# EUE 8rd N80 tubing. SWI and SDON. (JRD)

AFE #: 4147

Daily Cost:

Total Daily Cost:

Total Cum. Cost:

Aug 4, 2022 Thursday

FCP-100 psi, FTP-150 psi. Bled down casing pressure to gas buster. RU BCM cementer pump truck on tubing and pumped 45 bbl 10# brine down tbg. Tbg went on a vac. Finished POW laying down 305 jts N80 CS Hydril tubing and 4 1/2" Arrowset 1X 10K with 2-3/8" Tossd 1.81" F" PN. Took delivery of 328 jts 2 3/8" J55 EUE 8rd (yellow band) tubing. Contractor backhauled 8 jts 2-3/8" 4.7# EUE 8rd N80 tubing and 305 jts 2-3/8" N80 CS hydril tbg to Cannonball yard in Andrews for inspection. Removed thread protectors, cleaned threads, tallied tubing and installed clean thread protectors. RIW with 3-3/4" bit, 4 1/2" csg scrapper, 2-3/8" SN and 101 jts 2-3/8" EUE 8rd J55 tubing to 3226'. 4-1/2" Arrowset packer was taken to Mesquite shop for repairs. BLM came by the location and left a copy of P&A procedures with BLM changes. SWI and SDON. (JRD)

AFE #: 4147

Daily Cost:

Total Daily Cost:

Total Cum. Cost:

Aug 5, 2022 Friday

SICP-100 psi, SITP-150 psi. Bled down casing pressure to gas buster. RU BCM cement pump truck on tubing, pumped 40 bbl 10# brine down tbg and tbg went on a vac. Continued RIW with 3-3/4" bit, 4-1/2" csg scrapper and 2-3/8" SN. On 329 jts 2-3/8" J55 EUE 8rd (yellow band) tubing with no restrictions. Tagged at 10,504.73' (tubing tally) with Otis Perma-lach packer set at 10,515', Terry Cartwright with BLM on location and advised to set CIBP on tubing at 10,499.73'. POW with 329 jts 2-3/8" J55 EUE 8rd tbg and LD 3-3/4" bit, 4 1/2" csg scraper bit. RIW with 4-1/2" (tbg run) CIBP and 148 jts 2-3/8" J55 EUE 8rd (yellow band) tubing to 4721'. SWI and SDON. (JRD)

AFE #: 4147

Daily Cost:

Total Daily Cost:

Total Cum. Cost:

Aug 6, 2022 Saturday

No activity. Well shut in. (DB)

AFE #: 4147

Daily Cost:

Total Daily Cost:

Total Cum. Cost:

Aug 7, 2022 Sunday

No activity. Well shut in. (DB)

AFE #: 4147

Daily Cost:

Total Daily Cost:

Total Cum. Cost:

Fasken Oil and Ranch, LTD.**Combined Daily Operations Report**

1/1/2020 thru 9/1/2022

Page 2

Printed 9/1/2022

Aug 8, 2022 Monday

SICP-200 psi, SITP-200 psi. Bled down well and pumped 45 bbw mixed w/ biocide for well control. RIW w/ 180 joints 2-3/8" J55 EUE 8rd YB tubing from derrick to 10,467' and PU 2 2-3/8" x 10' J55 EUE 8rd tubing subs. Pumped tubing capacity 40 bbw down tubing before setting CIBP @ 10,500'. Pumped 84 bbw down tubing to load well but was pumping into perfs at 400 psi on last 5 bbw pumped. Mixed and spotted 25 sxs Class H cement (2.56 yield and 4.72 slurry), cement weight was 16.2 ppg and displaced with 39 bbw from 10,500' - 10,157' with pumping rate at 2.5 BPM and maximum pump pressure was 1200 psi and ad circulation throughout job. POW and LD 26 joints and WOC 4 hrs. RU BCM wire line truck, RIW and tagged TOC at 9983'(WLM) and BLM was on location to witness tag depth and received approval. RIW with CIBP, 302 joints 2-3/8" J55 EUE 8RD tubing and 1 2-3/8" x 10' J55 EUE 8RD tubing sub. Set CIBP at 9651'. Loaded well with 59 bbw mixed with biocide and pressure tested overall casing to 550 psi for 10 minutes with no pressure loss. Bled down pressure, SWI and SDON. (DB)

AFE #: 4147

Daily Cost:

Total Daily Cost:

Total Cum. Cost:

Aug 9, 2022 Tuesday

SICP-0 psi, SITP-0 psi. POW, LD 56 joints 2-3/8" J55 EUE 8rd YB tubing, POW and stood 246 joints 2-3/8" J55 EUE 8rd YB tubing in derrick. RU BCM wireline truck made 2 runs with 3.46" O.D. dump bailer containing 18' class H cement on each run (36'). Tagged CIBP at 9657'(WLM). RIW notched collar and 275 joints 2 3/8" J55 YB EUE 8rd tubing to 8800' FS. RU cement pump and circulated 9.5 lb. mud laden gel with 12.5 lbs of gel per bbl. Mixed 25 sxs class H cement and pumped 4.85 bbls cement slurry (339') with yield of 1.09 and displaced with 32.75 bbw. Cement weight at 16.2 ppg with calculated cement top at 8461'. Pumped 3 bpm and maximum pressure was 1200 lbs, RD cement line and POW 60 joints of tubing to derrick. Left EOT swinging at 6887'. Closed BOP, SWI and SDON. (DB)

AFE #: 4147

Daily Cost:

Total Daily Cost:

Total Cum. Cost:

Aug 10, 2022 Wednesday

Well dead. Opened BOP and RIW with 56 joints 2-3/8" J55 YB tubing from derrick and tagged TOC at 8672' FS. Notified BLM and was advised to continue with plugging operation. POW with 16 joints and LD 97 joints for total of 150 joints on pipe racks. RU BCM wire line truck and perforated 4 squeeze holes at 5665' with surface casing valve open and POW with WL. Loaded tubing and casing with 5 bbw mixed with biocide with good circulation out 8-5/8" casing. Closed surface casing valve and pumped 3 bpm at 500 psi down tubing. Informed BLM of pump rate and pressure. POW with 162 joints and stood in derrick. RIW with 4-1/2"-11.6 lb. AD-1 tension packer and 162 jts 2-3/8" J55 YB tubing. Set packer with 10K tension at 5196'. Pressure tested packer and 4-1/2" casing to 500 psi and left pressure on casing. RU cement pump. Mixed and pumped 40 sacks Class "C" cement (9.4 bbl cement slurry with 1.32 yield at weight of 14.8 ppg into perfs at 5665'. Displaced cement with 24.8 bbls brine water mixed with 9.5 ppg gel laden mud at no pressure with full returns out 8-5/8" surface casing the entire job. SI tubing and surface casing and left 500 psi on packer. Called BLM and gave the details of cement job and SDON. Plan to tag cement top in the morning. (DB)

AFE #: 4147

Daily Cost:

Total Daily Cost:

Total Cum. Cost:

Fasken Oil and Ranch, LTD.**Combined Daily Operations Report**

1/1/2020 thru 9/1/2022

Page 3

Printed 9/1/2022

Aug 11, 2022 Thursday

SICP-530 psi, SITP-0 psi. SI surface pressure 300 psi. Bled down surface pressure and 4-1/2" casing pressure. Opened BOP, RU wireline truck, RIW and tagged TOC at 5410' (WLM). BLM approved to continue with plugging operations. Released packer, POW and LD 29 joints 2-3/8" J55 EUE 8rd tubing. Set packer at 4275' with 10K tension. RU wireline, shot 4 squeeze holes at 4716' and POW with WL. RU cement pump, pressured up on packer and 4-1/2" casing to 500 psi. Pumped 5 bbw mixed with biocide into squeeze perfs at no pressure with surface valve open and full circulation out 8-5/8" casing. Mixed and pumped 36 sxs class "C" cement (8.4 bbl cement slurry with 1.32 yield and weight of 14.8 ppg). Displaced cement with 20.6 bbw mixed with 9.5 ppg gel laden mud at no pressure to 4538' with good circulation out 8-5/8" surface casing the entire job. Notified BLM of job details. Left 500 psi against packer, SI tubing and surface casing for 4 hours. Tagged TOC with wire line at 4472'. Notified BLM where we tagged TOC and they approved to continue with plugging operations. Bled casing pressure down and released packer. POW and LD 67 joints of tubing. Set packer at 2125' with 10K tension, pressure tested 4-1/2" casing and packer to 500 psi. RU wireline and shot 4 squeeze holes at 2588'. RU cement pump and pumped 5 bbw down tubing with good circulation from 8-5/8" casing. Pumped 35 sxs class "C" cement (8.2 bbl slurry with 1.32 yield and weight of 14.8 ppg) and displaced cement with 13.4 bbw mixed with 9.5 ppg gel laden mud at no pressure with good returns out 8-5/8" casing the entire job. SI tubing and surface casing and left 500 psi against packer. Notified BLM of job details and SDON. Plan to tag TOC in am. (DB)

AFE #: 4147

Daily Cost:

Total Daily Cost:

Total Cum. Cost:

Aug 12, 2022 Friday

SICP-500 psi, SITP-20 psi and SI surface casing pressure 300 psi. RU and RIW with wire line and tagged TOC at 2431'. BLM approved to continue with plugging operations. Opened BOP, released packer, POW and LD 82 joints 2 3/8" J55 EUE 8RD tubing and AD-1 tension packer. RIW with wire line with perf gun. Shot 4 squeeze holes at 816', POW and RDWL. ND BOP and NU cap flange. RU cement pump and circulated 40 bbw down 4-1/2" casing and out 8-5/8" surface casing. Established good circulation. Mixed and pumped 270 sxs class "C" cement (63.47 bbl cement slurry at 1.32 yield and 14.8 ppg) down 4-1/2" casing and out 8-5/8" surface casing at no pressure at rate of 1.5 bpm rate up to surface. BLM was on location, witnessed cement to surface and approved. Closed surface valve and pressured up to 500 psi on 4-1/2" casing and surface casing. Washed out cement pump lines, jetted out and emptied half frac tank and released vac truck. Waited 3 hours, opened valve on top of cap flange and had cement to valve. SWI and RDPU BCM Rig 7 and released all rental equipment. K-Nevaeh loaded and back hauled 328 joints 2-3/8" J55 EUE 8rd YB tubing and hauled to Cannonball pipe yard in Andrews. Will notify BLM when BCM and Associates can perform wellhead and mast anchors cut off next week. SWI and SDON. (DB)

AFE #: 4147

Daily Cost:

Total Daily Cost:

Total Cum. Cost:

Aug 13, 2022 Saturday

No activity. Waiting on wellhead cut off.

AFE #: 4147

Daily Cost:

Total Daily Cost:

Total Cum. Cost:

Fasken Oil and Ranch, LTD.**Combined Daily Operations Report**

1/1/2020 thru 9/1/2022

Page 4

Printed 9/1/2022

Aug 14, 2022 Sunday

No activity. Waiting on wellhead cut off.

AFE #: 4147

Daily Cost:

Total Daily Cost:

Total Cum. Cost:

Aug 15, 2022 Monday

No activity. Waiting on wellhead to be cut off.

AFE #: 4147

Daily Cost:

Total Daily Cost:

Total Cum. Cost:

Aug 16, 2022 Tuesday

No activity. Waiting on wellhead cut off.

AFE #: 4147

Daily Cost:

Total Daily Cost:

Total Cum. Cost:

Aug 17, 2022 Wednesday

No activity. Waiting on wellhead cut off.

AFE #: 4147

Daily Cost:

Total Daily Cost:

Total Cum. Cost:

Aug 18, 2022 Thursday

Called and notified New Mexico BLM and informed them of days plans. BCM backhoe and welder arrived on location and dug out wellhead and guy wire anchors. welder cut off wellhead, welded plate onto casing, installed 1" x 2000 psi valve on top of plate, closed valve and removed handle. Filled bottle with grease and placed over valve. Backhoe backfilled hole and covered casing. Removed mast anchors and back drug location. Sent 5K wellhead and 5K flange to Downing for cleaning and inspection. WELL IS PLUGGED AND ABANDONED. (JRS)

AFE #: 4147

Daily Cost:

Total Daily Cost:

Total Cum. Cost:

Report Based On:

Date Range: 1/1/2020 through 9/1/2022

Wells selected based on the following Report Menu selections:

Wells = El Paso Federal # 3.

Well: El Paso Federal No. 3

Operator: Fasken Oil and Ranch, Ltd. Tops

Location: 1664' FNL and 660' FEL

Sec 1, T21S, R26E

Eddy County, NM

Compl.: 9/26/1974 Released rig

API #: 30-015-21307

TD: 11,450'

PBSD: 11,226'

Casing: 13-3/8" 54.5#&61# H-40 @ 350' Delwre sd 2538'

w/200sx Halliburton Lite + 100 sx"C" +2% CaCl2 to 125'

TOC surf, w/16cuyds ready mix

8-5/8" 24&32# J-55 @ 4666' KB BS Lime 4635'

w/1400sx Howco Lite+200sx Thickset+ 160sx"C" w/ 2% CaCl2

to 1600', filled in 5stgs with 1050sx

TOC 75'

4-1/2" 11.6&13.5# N-80 @ 11,295' 1BS sand 5616'

Btm 24 jts (946.97') are 13.5#/ft, Top at +/-10,348'

Cmt w/ 650sx "C" w/7.6# kcl/sk +1% Halad-9

TOC 4-1/2" 7720' by Temp

2BS sand 6168'

Tubing: Proposed

305- jts 2-3/8" N-80 CS Hydril tbg 9336.18

X-over EUE to CS Hydril 0.63

8- jts 2-3/8" 4.7# EUE 8rd N-80 tbg 253.47

Below KB' 13.50

EOT: 9603.78

Surface Plug with 270 sx "C" cmt (surface)

Plug 5 with 35 sx "C" cmt (2,431')

Plug 4 with 36 sx "C" cmt (4,472')

Plug 3 with 40 sx "C" cmt (5,410')

Plug 2 with 25sx "H" cmt (8,672')

CIBP

Plug 1 with 25sx "H" cmt (9,983')

CIBP

Pkr: Otis Perma-lach w/PN and "N" plg 10,515.83

run 7-11-76.

(Note: top of 13.5#/ft csg +/-10,348')

3BS sand 8228'Wolfcamp 8752'Penn 9606'

9,651'

10,500'

Morrow CI 10842'

Strawn: Rprtd in Burton Flat, W. (Strawn) pool

9,714'-9,989'

Morrow

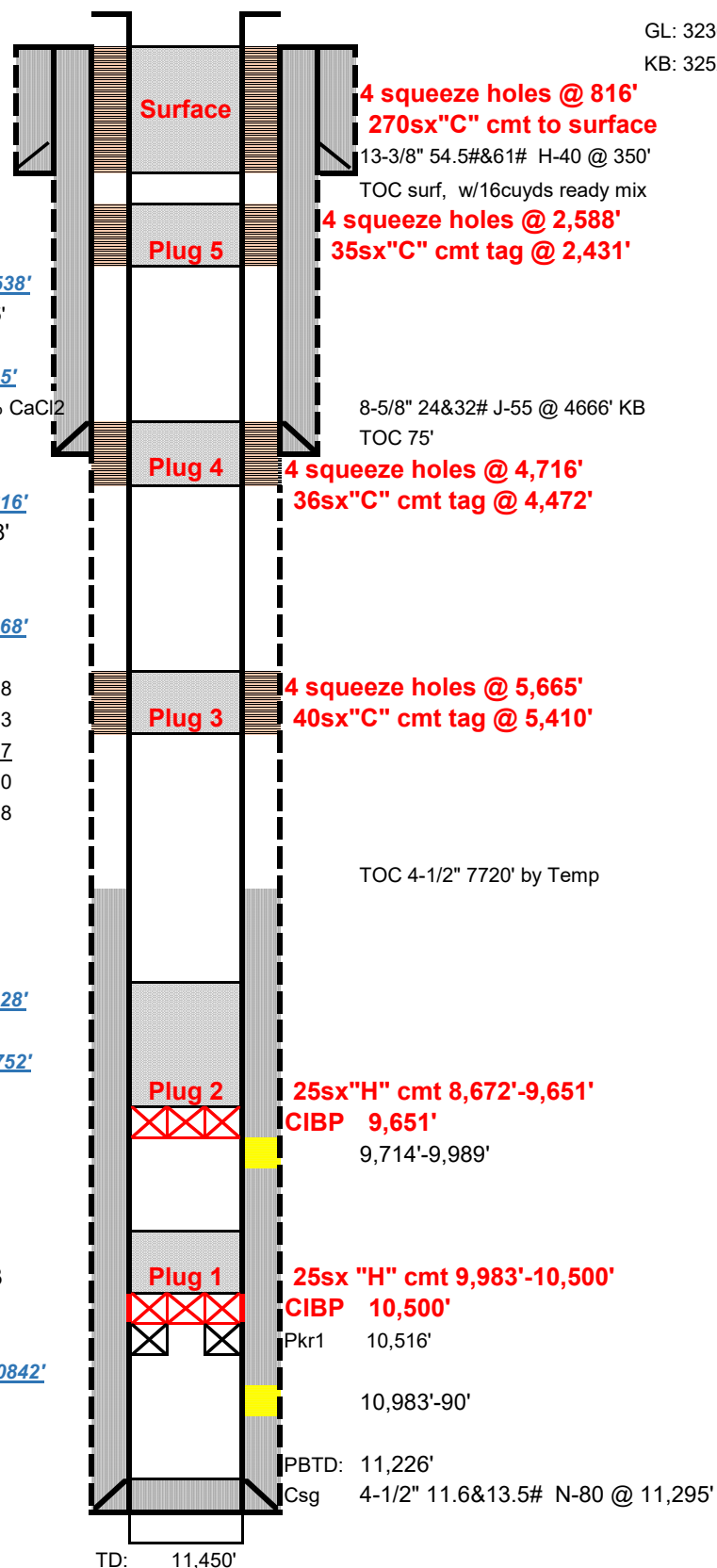
10,983'-90'

Hole sizes: 17-1/2" to 350'; 12-1/4" to 4,666'; 7-7/8" to 11,450'

Status: Shut-in Agreed Compliance Order.

GL: 3236'

KB: 3252'



District I
1625 N. French Dr., Hobbs, NM 88240
Phone:(575) 393-6161 Fax:(575) 393-0720
District II
811 S. First St., Artesia, NM 88210
Phone:(575) 748-1283 Fax:(575) 748-9720
District III
1000 Rio Brazos Rd., Aztec, NM 87410
Phone:(505) 334-6178 Fax:(505) 334-6170
District IV
1220 S. St Francis Dr., Santa Fe, NM 87505
Phone:(505) 476-3470 Fax:(505) 476-3462

State of New Mexico
Energy, Minerals and Natural Resources
Oil Conservation Division
1220 S. St Francis Dr.
Santa Fe, NM 87505

CONDITIONS

Action 141457

CONDITIONS

Operator: FASKEN OIL & RANCH LTD 6101 Holiday Hill Rd Midland, TX 79707	OGRID: 151416
	Action Number: 141457
	Action Type: [C-103] Sub. Plugging (C-103P)

CONDITIONS

Created By	Condition	Condition Date
gcordero	None	9/8/2022