

Submit a Copy To Appropriate District
Office
District I – (575) 393-6161
1625 N. French Dr., Hobbs, NM 88240
District II – (575) 748-1283
811 S. First St., Artesia, NM 88210
District III – (505) 334-6178
1000 Rio Brazos Rd., Aztec, NM 87410
District IV – (505) 476-3460
1220 S. St. Francis Dr., Santa Fe, NM
87505

State of New Mexico
Energy, Minerals and Natural Resources

Form C-103
Revised July 18, 2013

OIL CONSERVATION DIVISION
1220 South St. Francis Dr.
Santa Fe, NM 87505

WELL API NO. 30-025-05407
5. Indicate Type of Lease STATE <input type="checkbox"/> FEE <input checked="" type="checkbox"/>
6. State Oil & Gas Lease No.
7. Lease Name or Unit Agreement Name Lovington Paddock Unit
8. Well Number 70
9. OGRID Number 150661
10. Pool name or Wildcat 40660
4. Well Location Unit Letter <u>M</u> : <u>660</u> feet from the <u>South</u> line and <u>614</u> feet from the <u>West</u> line Section <u>6</u> Township <u>17S</u> Range <u>37E</u> NMPM County <u>Lea</u>
11. Elevation (Show whether DR, RKB, RT, GR, etc.)

SUNDRY NOTICES AND REPORTS ON WELLS

(DO NOT USE THIS FORM FOR PROPOSALS TO DRILL OR TO DEEPEN OR PLUG BACK TO A DIFFERENT RESERVOIR. USE "APPLICATION FOR PERMIT" (FORM C-101) FOR SUCH PROPOSALS.)

1. Type of Well: Oil Well ☐ Gas Well ☐ Other

2. Name of Operator
Chevron Midcontinent, L.P.

3. Address of Operator
6301 Deauville Blvd Midland, Texas 79706

12. Check Appropriate Box to Indicate Nature of Notice, Report or Other Data

NOTICE OF INTENTION TO:

PERFORM REMEDIAL WORK ☐ PLUG AND ABANDON ☒
TEMPORARILY ABANDON ☐ CHANGE PLANS ☐
PULL OR ALTER CASING ☐ MULTIPLE COMPL ☐
DOWNHOLE COMMINGLE ☐
CLOSED-LOOP SYSTEM ☐
OTHER: ☐

SUBSEQUENT REPORT OF:

REMEDIAL WORK ☐ ALTERING CASING ☐
COMMENCE DRILLING OPNS. ☐ P AND A ☐
CASING/CEMENT JOB ☐
OTHER: ☐

13. Describe proposed or completed operations. (Clearly state all pertinent details, and give pertinent dates, including estimated date of starting any proposed work). SEE RULE 19.15.7.14 NMAC. For Multiple Completions: Attach wellbore diagram of proposed completion or recompletion.

Please see attached procedure for well abandonment details.

4" diameter 4' tall Above Ground Marker

SEE ATTACHED CONDITIONS
OF APPROVAL

Spud Date:

Rig Release Date:

I hereby certify that the information above is true and complete to the best of my knowledge and belief.

SIGNATURE Mark Torres TITLE P&A Engineer DATE 8/17/2022

Type or print name _____ E-mail address: _____ PHONE: _____

For State Use Only

APPROVED BY: Kerry Fortner TITLE Compliance Officer A DATE 9/23/22

Conditions of Approval (if any):

**CONDITIONS OF APPROVAL
FOR PLUGGING AND ABANDONMENT
OCD - Southern District**

The following is a guide or checklist in preparation of a plugging program, this is not all inclusive and care must be exercised in establishing special plugging programs in unique and unusual cases, Notify NMOCD District Office I (Hobbs) at **(575)-263-6633** at least 24 hours before beginning work. After MIRU rig will remain on well until it is plugged to surface. OCD is to be notified before rig down.

Company representative will be on location during plugging procedures.

1. A notice of intent to plug and abandon a wellbore is required to be approved before plugging operations are conducted. A cement evaluation tool is required in order to ensure isolation of producing formations, protection of water and correlative rights. A cement bond log or other accepted cement evaluation tool is to be provided to the division for evaluation if one has not been previously run or if the well did not have cement circulated to surface during the original casing cementing job or subsequent cementing jobs. Insure all bradenheads have been exposed, identified and valves are operational prior to rig up.
2. Closed loop system is to be used for entire plugging operation. Upon completion, contents of steel pits are to be hauled to a permitted disposal location.
3. Trucking companies being used to haul oilfield waste fluids to a disposal - commercial or private- shall have an approved NMOCD C-133 permit. A copy of this permit shall be available in each truck used to haul waste products. It is the responsibility of the operator as well as the contractor, to verify that this permit is in place prior to performing work. Drivers shall be able to produce a copy upon request of an NMOCD Field inspector.
4. Filing a subsequent C-103 will serve as notification that the well has been plugged.
5. A final C-103 shall be filed (and a site inspection by NMOCD Inspector to determine if the location is satisfactorily cleaned, all equipment, electric poles and trash has been removed to Meet NMOCD standards) before bonding can be released.
6. If work has not begun within 1 Year of the approval of this procedure, an extension request must be file stating the reason the well has not been plugged.
7. Squeeze pressures are not to exceed 500 psi, unless approval is given by NMOCD.
8. Produced water will not be used during any part of the plugging operation.
9. Mud laden fluids must be placed between all cement plugs mixed at 25 sacks per 100 bbls of water.
10. All cement plugs will be a minimum of 100' in length or a minimum of 25 sacks of cement, whichever is greater. 50' of calculated cement excess required for inside casing plugs and 100% calculated cement excess required on outside casing plugs.
11. Class 'C' cement will be used above 7500 feet.
12. Class 'H' cement will be used below 7500 feet.
13. A cement plug is required to be set 50' above and 50' below, casing stubs, DV tools, attempted casing cut offs, cement tops outside casing, salt sections and anywhere the casing is perforated, these plugs require a 4 hour WOC and then will be tagged
14. All Casing Shoes Will Be Perforated 50' below shoe depth and Attempted to be Squeezed, cement needs to be 50' above and 50' Below Casing Shoe inside the Production Casing.
16. When setting the top out cement plug in production, intermediate and surface casing, wellbores should remain full at least 30 minutes after plugs are set
17. A CIBP is to be set within 100' of production perforations, capped with 100' of cement, WOC 4 hours and tag.
18. A CIBP with 35' of cement may be used in lieu of the 100' plug if set with a bailer. This plug will be placed within 100' of the top perforation, (WOC 4 hrs and tag).

19. No more than 3000' is allowed between cement plugs in cased hole and 2000' in open hole.
20. Some of the Formations to be isolated with cement plugs are: These plugs to be set to isolate formation tops
- A) Fusselman
 - B) Devonian
 - C) Morrow
 - D) Wolfcamp
 - E) Bone Springs
 - F) Delaware
 - G) Any salt sections
 - H) Abo
 - I) Glorieta
 - J) Yates.
 - K) Potash---(In the R-111-P Area (Potash Mine Area),
A solid cement plug must be set across the salt section. Fluid used to mix the cement shall be saturated with the salts that are common to the section penetrated and in suitable proportions, not more than 3% calcium chloride (by weight of cement) will be considered the desired mixture whenever possible, WOC 4 hours and tag, this plug will be 50' below the bottom and 50' above the top of the Formation.
21. If cement does not exist behind casing strings at recommended formation depths, the casing can be cut and pulled with plugs set at recommended depths. If casing is not pulled, perforations will be shot and cement squeezed behind casing, WOC and tagged. These plugs will be set 50' below formation bottom to 50' above formation top inside the casing.

DRY HOLE MARKER REQUIREMENTS

The operator shall mark the exact location of the plugged and abandoned well with a steel marker not less than four inches in diameter, 3' below ground level with a plate of at least ¼" welded to the top of the casing and the dry hole marker welded on the plate with the following information welded on the dry hole marker:

1. Operator name
2. Lease and Well Number
3. API Number
4. Unit letter
5. Quarter Section (feet from the North, South, East or West)
6. Section, Township and Range
7. Plugging Date
8. County

SPECIAL CASES -----AGRICULTURE OR PRARIE CHICKEN BREEDING AREAS

In these areas, a below ground marker is required with all pertinent information mentioned above on a plate, set 3' below ground level, a picture of the plate will be supplied to NMOCD for record, the exact location of the marker (longitude and latitude by GPS) will be provided to NMOCD (We typically require a current survey to verify the GPS)

SITE REMEDIATION DUE WITHIN ONE YEAR OF WELL PLUGGING COMPLETION

Plugging Plan – Lovington Paddock Unit #070

API: 30-025-05407

Note:

- Injection well with IPC tubing installed

Proposed procedure:

1. Move in P&A spread, N/U BOPE and pressure test same to 250 psi low for 5 minutes / 2500 psi high for 10 minutes.
2. Conduct bubble tests on all annuli. Adjust forward plan as necessary to perforate and squeeze any intervals listed below with the approval of NMOCD.
3. Pressure test casing/tubing string to 500 psi. If tubing tests, Sunset Well Services has frequently opted to bullhead cement below packer to assist in killing well. If this is selected as path forward, bullhead agreed upon cement volume per NMOCD. WOC. Plan to spot cement plug #1 per C-103 above the packer once released. If tubing does not test, see next job steps.
4. [Option if tubing does not test] Plan to set mechanical plug inside packer profile to form mechanical barrier at 6050'.
 - a. Attempt to run gauge ring through IPC tubing to 6050'
 - b. If successful, plan to set cast iron tubing plug adjacent to packer
 - c. If unsuccessful, plan to release from packer and TOH with IPC tubing. Run gauge ring then CIBP and set above packer left in hole.
5. TIH with pressure tested workstring to tag mechanical barrier
6. Spot 26 sacks Class C cement from 6050' to 5800'.
7. Spot 36 sacks Class C cement from 4678' to 4319' (San Andres, Grayburg).
8. Perforate & squeeze 35 sacks Class C cement from 3909' to 3759' (Queen).
9. Perforate & squeeze 50 sacks Class C cement from 2022' to 1806' (Salt, Rustler, 8-5/8" shoe).
10. WOC & tag plug, pressure test prod csg.
11. Conduct 30 minute bubble test in all annuli. If bubble test fails, discuss contingency perforation/squeeze or casing cut/pull. Confirm forward plan with NMOCD.
12. Once a passing bubble test is achieved, spot 25 sacks Class C cement from 250' to 0'.
13. Confirm cement returns at surface
14. Rig down move off location

**CURRENT
WELLBORE DIAGRAM**

LPU 70

Created:	<u>8/25/2008</u>	By:	<u>CAYN</u>	Well No.:	<u>70</u>	Field:	<u>Lovington Paddock (Glorieta)</u>
Updated:	<u>9/9/2008</u>	By:	<u>CAYN</u>	Unit Ltr:	<u>M</u>	Sec:	<u>6</u> TSHP/Range: <u>17S 37E</u>
Lease:	<u>Lovington Paddock Unit</u>			Unit Ltr:	<u></u>	Sec:	<u></u> TSHP/Range: <u></u>
Surface Location:	<u>660' FSL 614' FWL</u>			St Lease:	<u></u>	API:	<u>30-025-05407</u> CHEVNO: <u>FA6534</u>
Bottomhole Location:	<u></u>			Elevation:	<u>3822' DF</u>	CHVNO:	<u></u> TEPI: <u></u>
County:	<u>Lea</u>	St:	<u>NM</u>	MVP: <u></u>			
Current Status:	<u>Water injection</u>						

Surface Csg.

Size: 8 5/8"
 Wt.: 32#
 Set @: 1907'
 Sxs cmt: 900
 Circ: yes
 TOC: surface
 Hole Size: 12 1/4"

KB:

DF: 3822'

GL:

Original Spud Date: 7/9/1953

Original Compl. Date: 9/4/1953

Perfs @ 1,804'
 Circulated 350 scks, returns to surf

Production Csg.

Size: 5 1/2"
 Wt.: 17#
 Set @: 6115'
 Sxs Cmt: 200
 Circ: No
 TOC: 4590' CALCULATED
 Hole Size: 7 7/8"

Baker AD-1 on 190 jts of
 2 3/8" tbg. Pkr set @
 6050'

TD: 6350'

Remarks:

**CURRENT
WELLBORE DIAGRAM****LPU 70**

Created: 8/25/2008 By: CAYN
Updated: 9/9/2008 By: CAYN

Lease: Lovington Paddock Unit

Surface Location: 660' FSL 614' FWL

Bottomhole Location:

County: Lea St: NM

Current Status: Water injection

Well No.: 70

Unit Ltr: M

Unit Ltr:

St Lease:

Elevation: 3822' DF

Field: Lovington Paddock (Glorieta)

Sec: 6 TSHP/Range: 17S 37E

Sec: TSHP/Range:

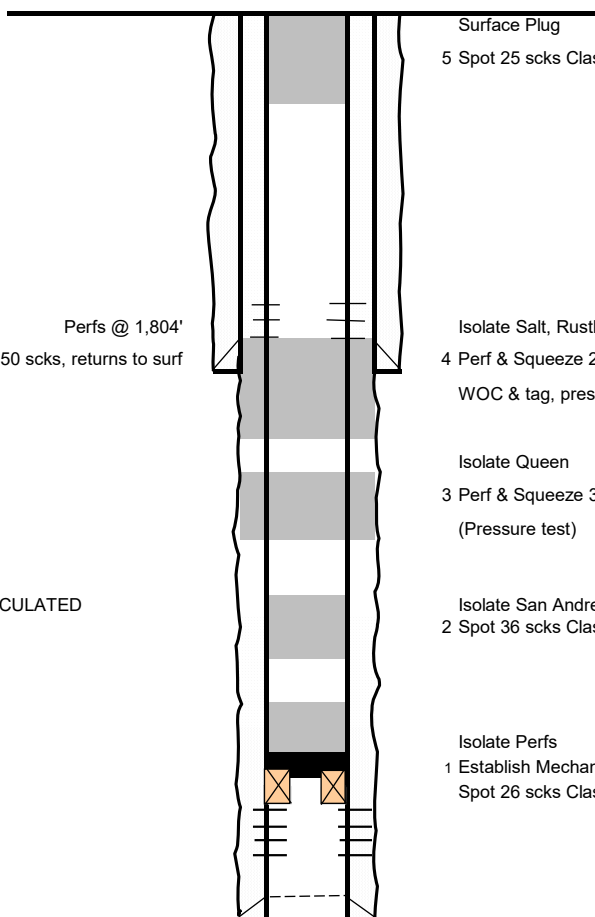
API: 30-025-05407 CHEVNO: FA6534

CHVNO: TEPI:

MVP:

Surface Csg.

Size: 8 5/8"
Wt.: 32#
Set @: 1907'
Sxs cmt: 900
Circ: yes
TOC: surface
Hole Size: 12 1/4"



Surface Plug KB: _____
5 Spot 25 scks Class C: 250' - 0' DF: 3822'
GL: _____
Original Spud Date: 7/9/1953
Original Compl. Date: 9/4/1953

Production Csg.

Size: 5 1/2"
Wt.: 17#
Set @: 6115'
Sxs Cmt: 200
Circ: No
TOC: 4500' CALCULATED
Hole Size: 7 7/8"

Isolate Salt, Rustler, 8-5/8" Shoe
4 Perf & Squeeze 25 scks Class C: 2,022' - 1,917'
WOC & tag, pressure test

Isolate Queen
3 Perf & Squeeze 35 scks Class C: 3,909' - 3,759'
(Pressure test)

Isolate San Andres, Grayburg
2 Spot 36 scks Class C: 4,678' - 4,319'

Isolate Perfs
1 Establish Mechanical Barrier at 6,050'
Spot 26 scks Class C: 6,050' - 5,800'

Fortmation	Top (MD)
Rustler	1,900
Salt	2,022
Tansil	n/a
Seven Rivers	3,327
Queen	3,909
Grayburg	4,413
San Andres	4,672
Glorieta	6,055
Paddock	6,157

TD: 6350'

Remarks:

Plugging Plan – Lovington Paddock Unit #070

API: 30-025-05407

Note:

- Injection well with IPC tubing installed

Proposed procedure:

1. Move in P&A spread, N/U BOPE and pressure test same to 250 psi low for 5 minutes / 2500 psi high for 10 minutes.
2. Conduct bubble tests on all annuli. Adjust forward plan as necessary to perforate and squeeze any intervals listed below with the approval of NMOCD.
3. Pressure test casing/tubing string to 500 psi. If tubing tests, Sunset Well Services has frequently opted to bullhead cement below packer to assist in killing well. If this is selected as path forward, bullhead agreed upon cement volume per NMOCD. WOC. Plan to spot cement plug #1 per C-103 above the packer once released. If tubing does not test, see next job steps.
4. [Option if tubing does not test] Plan to set mechanical plug inside packer profile to form mechanical barrier at 6050'.
 - a. Attempt to run gauge ring through IPC tubing to 6050'
 - b. If successful, plan to set cast iron tubing plug adjacent to packer
 - c. If unsuccessful, plan to release from packer and TOH with IPC tubing. Run gauge ring then CIBP and set above packer left in hole.
5. TIH with pressure tested workstring to tag mechanical barrier
6. Spot 26 sacks Class C cement from 6050' to 5800'.
7. Spot 36 sacks Class C cement from 4678' to 4319' (San Andres, Grayburg).
8. Perforate & squeeze 35 sacks Class C cement from 3909' to 3759' (Queen).
9. Perforate & squeeze 50 sacks Class C cement from 2022' to 1806' (Salt, Rustler, 8-5/8" shoe).
10. WOC & tag plug, pressure test prod csg.
11. Conduct 30 minute bubble test in all annuli. If bubble test fails, discuss contingency perforation/squeeze or casing cut/pull. Confirm forward plan with NMOCD.
12. Once a passing bubble test is achieved, spot 25 sacks Class C cement from 250' to 0'.
13. Confirm cement returns at surface
14. Rig down move off location

**CURRENT
WELLBORE DIAGRAM**

LPU 70

Created:	<u>8/25/2008</u>	By:	<u>CAYN</u>	Well No.:	<u>70</u>	Field:	<u>Lovington Paddock (Glorieta)</u>
Updated:	<u>9/9/2008</u>	By:	<u>CAYN</u>	Unit Ltr:	<u>M</u>	Sec:	<u>6</u> TSHP/Range: <u>17S 37E</u>
Lease:	<u>Lovington Paddock Unit</u>			Unit Ltr:	<u></u>	Sec:	<u></u> TSHP/Range: <u></u>
Surface Location:	<u>660' FSL 614' FWL</u>			St Lease:	<u></u>	API:	<u>30-025-05407</u> CHEVNO: <u>FA6534</u>
Bottomhole Location:	<u></u>			Elevation:	<u>3822' DF</u>	CHVNO:	<u></u> TEPI: <u></u>
County:	<u>Lea</u>	St:	<u>NM</u>	MVP: <u></u>			
Current Status:	<u>Water injection</u>						

Surface Csg.

Size: 8 5/8"
 Wt.: 32#
 Set @: 1907'
 Sxs cmt: 900
 Circ: yes
 TOC: surface
 Hole Size: 12 1/4"

KB:

DF: 3822'

GL:

Original Spud Date: 7/9/1953

Original Compl. Date: 9/4/1953

Perfs @ 1,804'
 Circulated 350 scks, returns to surf

Production Csg.

Size: 5 1/2"
 Wt.: 17#
 Set @: 6115'
 Sxs Cmt: 200
 Circ: No
 TOC: 4590' CALCULATED
 Hole Size: 7 7/8"

Baker AD-1 on 190 jts of
 2 3/8" tbg. Pkr set @
 6050'

TD: 6350'

Remarks:

**CURRENT
WELLBORE DIAGRAM****LPU 70**

Created: 8/25/2008 By: CAYN
Updated: 9/9/2008 By: CAYN

Lease: Lovington Paddock Unit

Surface Location: 660' FSL 614' FWL

Bottomhole Location:

County: Lea St: NM

Current Status: Water injection

Well No.: 70

Unit Ltr: M

Unit Ltr:

St Lease:

Elevation: 3822' DF

Field: Lovington Paddock (Glorieta)

Sec: 6 TSHP/Range: 17S 37E

Sec: TSHP/Range:

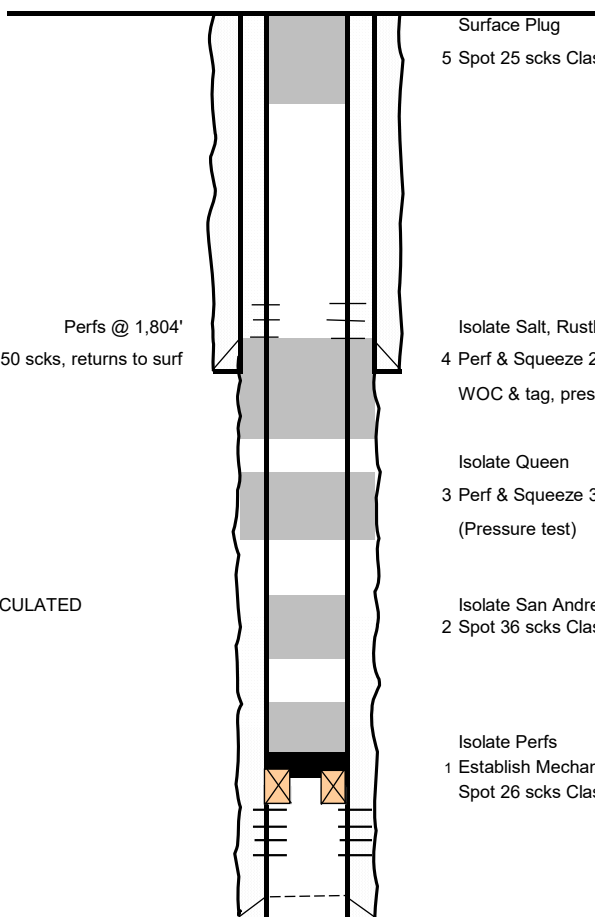
API: 30-025-05407 CHEVNO: FA6534

CHVNO: TEPI:

MVP:

Surface Csg.

Size: 8 5/8"
Wt.: 32#
Set @: 1907'
Sxs cmt: 900
Circ: yes
TOC: surface
Hole Size: 12 1/4"



Surface Plug KB: _____
5 Spot 25 scks Class C: 250' - 0' DF: 3822'
GL: _____
Original Spud Date: 7/9/1953
Original Compl. Date: 9/4/1953

Production Csg.

Size: 5 1/2"
Wt.: 17#
Set @: 6115'
Sxs Cmt: 200
Circ: No
TOC: 4500' CALCULATED
Hole Size: 7 7/8"

Fortmation	Top (MD)
Rustler	1,900
Salt	2,022
Tansil	n/a
Seven Rivers	3,327
Queen	3,909
Grayburg	4,413
San Andres	4,672
Glorieta	6,055
Paddock	6,157

Isolate Salt, Rustler, 8-5/8" Shoe
4 Perf & Squeeze 25 scks Class C: 2,022' - 1,917'
WOC & tag, pressure test

Isolate Queen
3 Perf & Squeeze 35 scks Class C: 3,909' - 3,759'
(Pressure test)

Isolate San Andres, Grayburg
2 Spot 36 scks Class C: 4,678' - 4,319'

Isolate Perfs
1 Establish Mechanical Barrier at 6,050'
Spot 26 scks Class C: 6,050' - 5,800'

TD: 6350'

Remarks:

Plugging Plan – Lovington Paddock Unit #070

API: 30-025-05407

Note:

- Injection well with IPC tubing installed

Proposed procedure:

1. Move in P&A spread, N/U BOPE and pressure test same to 250 psi low for 5 minutes / 2500 psi high for 10 minutes.
2. Conduct bubble tests on all annuli. Adjust forward plan as necessary to perforate and squeeze any intervals listed below with the approval of NMOCD.
3. Pressure test casing/tubing string to 500 psi. If tubing tests, Sunset Well Services has frequently opted to bullhead cement below packer to assist in killing well. If this is selected as path forward, bullhead agreed upon cement volume per NMOCD. WOC. Plan to spot cement plug #1 per C-103 above the packer once released. If tubing does not test, see next job steps.
4. [Option if tubing does not test] Plan to set mechanical plug inside packer profile to form mechanical barrier at 6050'.
 - a. Attempt to run gauge ring through IPC tubing to 6050'
 - b. If successful, plan to set cast iron tubing plug adjacent to packer
 - c. If unsuccessful, plan to release from packer and TOH with IPC tubing. Run gauge ring then CIBP and set above packer left in hole.
5. TIH with pressure tested workstring to tag mechanical barrier
6. Spot 26 sacks Class C cement from 6050' to 5800'.
7. Spot 36 sacks Class C cement from 4678' to 4319' (San Andres, Grayburg).
8. Perforate & squeeze 35 sacks Class C cement from 3909' to 3759' (Queen).
9. Perforate & squeeze 50 sacks Class C cement from 2022' to 1806' (Salt, Rustler, 8-5/8" shoe).
10. WOC & tag plug, pressure test prod csg.
11. Conduct 30 minute bubble test in all annuli. If bubble test fails, discuss contingency perforation/squeeze or casing cut/pull. Confirm forward plan with NMOCD.
12. Once a passing bubble test is achieved, spot 25 sacks Class C cement from 250' to 0'.
13. Confirm cement returns at surface
14. Rig down move off location

**CURRENT
WELLBORE DIAGRAM**

LPU 70

Created:	<u>8/25/2008</u>	By:	<u>CAYN</u>	Well No.:	<u>70</u>	Field:	<u>Lovington Paddock (Glorieta)</u>
Updated:	<u>9/9/2008</u>	By:	<u>CAYN</u>	Unit Ltr:	<u>M</u>	Sec:	<u>6</u> TSHP/Range: <u>17S 37E</u>
Lease:	<u>Lovington Paddock Unit</u>			Unit Ltr:	<u></u>	Sec:	<u></u> TSHP/Range: <u></u>
Surface Location:	<u>660' FSL 614' FWL</u>			St Lease:	<u></u>	API:	<u>30-025-05407</u> CHEVNO: <u>FA6534</u>
Bottomhole Location:	<u></u>			Elevation:	<u>3822' DF</u>	CHVNO:	<u></u> TEPI: <u></u>
County:	<u>Lea</u>	St:	<u>NM</u>	MVP: <u></u>			
Current Status:	<u>Water injection</u>						

Surface Csg.

Size: 8 5/8"
 Wt.: 32#
 Set @: 1907'
 Sxs cmt: 900
 Circ: yes
 TOC: surface
 Hole Size: 12 1/4"

KB:

DF: 3822'

GL:

Original Spud Date: 7/9/1953

Original Compl. Date: 9/4/1953

Production Csg.

Size: 5 1/2"
 Wt.: 17#
 Set @: 6115'
 Sxs Cmt: 200
 Circ: No
 TOC: 4590' CALCULATED
 Hole Size: 7 7/8"

Perfs @ 1,804'
 Circulated 350 scks, returns to surf

Baker AD-1 on 190 jts of
 2 3/8" tbg. Pkr set @
 6050'

TD: 6350'

Remarks:

**CURRENT
WELLBORE DIAGRAM**

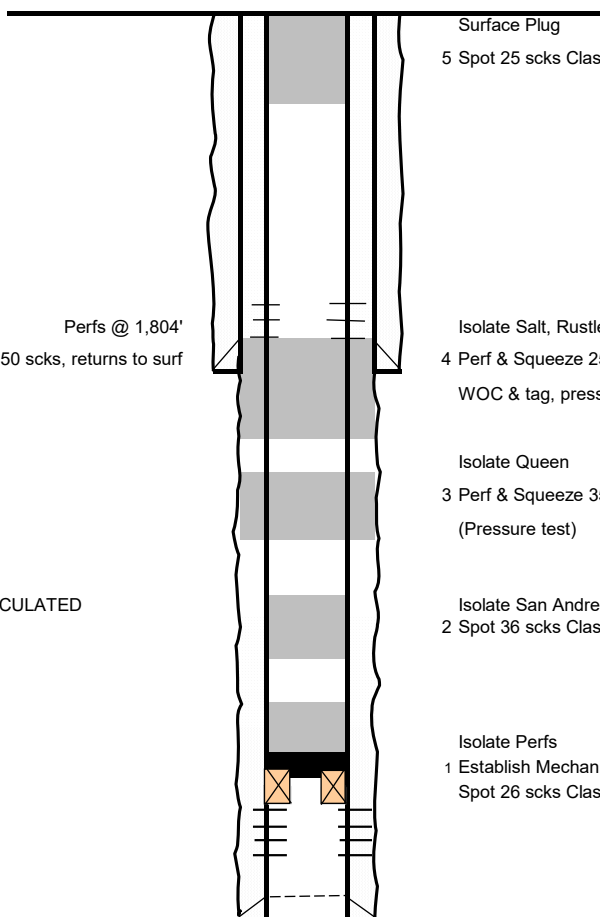
LPU 70

Created: 8/25/2008 By: CAYN
 Updated: 9/9/2008 By: CAYN
 Lease: Lovington Paddock Unit
 Surface Location: 660' FSL 614' FWL
 Bottomhole Location:
 County: Lea St: NM
 Current Status: Water injection

Well No.: 70 Field: Lovington Paddock (Glorieta)
 Unit Ltr: M Sec: 6 TSHP/Range: 17S 37E
 Unit Ltr: Sec: TSHP/Range:
 St Lease: API: 30-025-05407 CHEVNO: FA6534
 Elevation: 3822' DF CHVNO: TEPI:
 MVP:

Surface Csg.

Size: 8 5/8"
 Wt.: 32#
 Set @: 1907'
 Sxs cmt: 900
 Circ: yes
 TOC: surface
 Hole Size: 12 1/4"



Surface Plug KB: _____
 5 Spot 25 scks Class C: 250' - 0' DF: 3822'
 GL: _____
 Original Spud Date: 7/9/1953
 Original Compl. Date: 9/4/1953

Perfs @ 1,804'
 Circulated 350 scks, returns to surf

Isolate Salt, Rustler, 8-5/8" Shoe
 4 Perf & Squeeze 25 scks Class C: 2,022' - 1,917'
 WOC & tag, pressure test

Production Csg.

Size: 5 1/2"
 Wt.: 17#
 Set @: 6115'
 Sxs Cmt: 200
 Circ: No
 TOC: 4500' CALCULATED
 Hole Size: 7 7/8"

Isolate Queen
 3 Perf & Squeeze 35 scks Class C: 3,909' - 3,759'
 (Pressure test)

Isolate San Andres, Grayburg
 2 Spot 36 scks Class C: 4,678' - 4,319'

Isolate Perfs
 1 Establish Mechanical Barrier at 6,050'
 Spot 26 scks Class C: 6,050' - 5,800'

Fortmation	Top (MD)
Rustler	1,900
Salt	2,022
Tansil	n/a
Seven Rivers	3,327
Queen	3,909
Grayburg	4,413
San Andres	4,672
Glorieta	6,055
Paddock	6,157

TD: 6350'

Remarks:

District I

1625 N. French Dr., Hobbs, NM 88240
Phone:(575) 393-6161 Fax:(575) 393-0720

District II

811 S. First St., Artesia, NM 88210
Phone:(575) 748-1283 Fax:(575) 748-9720

District III

1000 Rio Brazos Rd., Aztec, NM 87410
Phone:(505) 334-6178 Fax:(505) 334-6170

District IV

1220 S. St Francis Dr., Santa Fe, NM 87505
Phone:(505) 476-3470 Fax:(505) 476-3462

State of New Mexico
Energy, Minerals and Natural Resources
Oil Conservation Division
1220 S. St Francis Dr.
Santa Fe, NM 87505

COMMENTS

Action 135087

COMMENTS

Operator: CHEVRON U S A INC 6301 Deauville Blvd Midland, TX 79706	OGRID: 4323
	Action Number: 135087
	Action Type: [C-103] NOI Plug & Abandon (C-103F)

COMMENTS

Created By	Comment	Comment Date
plmartinez	DATA ENTRY PM	9/23/2022

District I
1625 N. French Dr., Hobbs, NM 88240
Phone:(575) 393-6161 Fax:(575) 393-0720
District II
811 S. First St., Artesia, NM 88210
Phone:(575) 748-1283 Fax:(575) 748-9720
District III
1000 Rio Brazos Rd., Aztec, NM 87410
Phone:(505) 334-6178 Fax:(505) 334-6170
District IV
1220 S. St Francis Dr., Santa Fe, NM 87505
Phone:(505) 476-3470 Fax:(505) 476-3462

State of New Mexico
Energy, Minerals and Natural Resources
Oil Conservation Division
1220 S. St Francis Dr.
Santa Fe, NM 87505

CONDITIONS

Action 135087

CONDITIONS

Operator: CHEVRON U S A INC 6301 Deauville Blvd Midland, TX 79706	OGRID: 4323
	Action Number: 135087
	Action Type: [C-103] NOI Plug & Abandon (C-103F)

CONDITIONS

Created By	Condition	Condition Date
kfortner	See attached COA	9/23/2022