

Submit a Copy To Appropriate District
Office
District I – (575) 393-6161
1625 N. French Dr., Hobbs, NM 88240
District II – (575) 748-1283
811 S. First St., Artesia, NM 88210
District III – (505) 334-6178
1000 Rio Brazos Rd., Aztec, NM 87410
District IV – (505) 476-3460
1220 S. St. Francis Dr., Santa Fe, NM
87505

State of New Mexico
Energy, Minerals and Natural Resources

Form C-103
Revised July 18, 2013

OIL CONSERVATION DIVISION
1220 South St. Francis Dr.
Santa Fe, NM 87505

WELL API NO. 30-025-03894
5. Indicate Type of Lease STATE <input checked="" type="checkbox"/> FEE <input type="checkbox"/>
6. State Oil & Gas Lease No.
7. Lease Name or Unit Agreement Name West Lovington Unit
8. Well Number 29
9. OGRID Number
10. Pool name or Wildcat W. Lovington Upper San Andres
11. Elevation (Show whether DR, RKB, RT, GR, etc.) 3914' G.L.

SUNDRY NOTICES AND REPORTS ON WELLS

(DO NOT USE THIS FORM FOR PROPOSALS TO DRILL OR TO DEEPEN OR PLUG BACK TO A DIFFERENT RESERVOIR. USE "APPLICATION FOR PERMIT" (FORM C-101) FOR SUCH PROPOSALS.)

1. Type of Well: Oil Well ☐ Gas Well ☒ Other Injector

2. Name of Operator
Chevron Midcontinent, L.P.

3. Address of Operator
6301 Deauville Blvd., Midland, TX 79706

4. Well Location
Unit Letter P : 660' feet from the South line and 660' feet from the East line
Section 6 Township 17S Range 36E NMPM Lea County

12. Check Appropriate Box to Indicate Nature of Notice, Report or Other Data

NOTICE OF INTENTION TO:

PERFORM REMEDIAL WORK ☐ PLUG AND ABANDON ☐
TEMPORARILY ABANDON ☐ CHANGE PLANS ☐
PULL OR ALTER CASING ☐ MULTIPLE COMPL ☐
DOWNHOLE COMMINGLE ☐
CLOSED-LOOP SYSTEM ☐
OTHER: ☐

SUBSEQUENT REPORT OF:

REMEDIAL WORK ☐ ALTERING CASING ☐
COMMENCE DRILLING OPNS. ☐ **P AND A** ☒
CASING/CEMENT JOB ☐
OTHER: ☐

13. Describe proposed or completed operations. (Clearly state all pertinent details, and give pertinent dates, including estimated date of starting any proposed work). SEE RULE 19.15.7.14 NMAC. For Multiple Completions: Attach wellbore diagram of proposed completion or recompletion.

WELL ABANDONMENT DETAILS

4/20/2022: Squeeze 35 sacks Class C cement below packer. Packer stuck in place, receive permission to leave packer in place at 4610'. Achieve successful pressure test to 1100 psi for 15 minutes.
4/21/2022: Spot 35 sacks Class C cement from 4610' to 4273'. Mix and spot 30 sacks Class C cement from 3900' to 3611'. Perforate at 3075'. Attempt to inject, 1000 psi with no success. Receive permission from NMOCD to spot cement. Perforate at 2100' and establish injection.
4/22/2022: Spot 60 sacks Class C cement from 3125' to 2547'.
Spot and squeeze 75 sacks Class C cement from 2100' to 1840'. Tag at 1839'.
Perforate at 1500'. Spot and squeeze 125 sacks Class C cement from 1500' to 989'. Tag at 943'.
4/25/2022: Perforate at 265'. Circulate 190 sacks Class C cement from 265' to surface.

Spud Date:

Rig Release Date:

I hereby certify that the information above is true and complete to the best of my knowledge and belief.

SIGNATURE Hayes Thibodeaux TITLE Engineer DATE 7/20/2022

Type or print name Hayes Thibodeaux E-mail address: Hayes.Thibodeaux@chevron.com PHONE: 281-726-9683

For State Use Only

APPROVED BY: Kerry Fortner TITLE Compliance Officer A DATE 10/12/22

Conditions of Approval (if any):



EMC Ops Summary - External

Well Name WEST LOVINGTON UNIT 029	Field Name LOVINGTON WEST	Lease West Lovington Unit	Area Central
Business Unit EMC	County/ Parish Lea	Global Metrics Region EMC US East	Surface UWI 3002503894

Basic Well Data			
Current RKB Elevation 3,914.00, 4/20/2022	Original RKB Elevation (ft) 3,914.00	Latitude (°) 32° 51' 30.427" N	Longitude (°) 103° 23' 15.677" W

Phases					
Actual Start Date	Actual End Date	Phase 1	Phase 2	Time Log Hrs (hr)	Percent Problem Time (%)
2/7/2022 07:00	2/7/2022 17:00	PREP	FAC	10.00	
4/19/2022 15:00	4/19/2022 15:15	MOB	MOVEON	0.25	
4/19/2022 15:15	4/20/2022 09:30	ABAN	TBGPULL	5.25	
4/20/2022 09:30	4/25/2022 14:00	ABAN	CMTPLUG	37.00	
5/11/2022 12:00	5/11/2022 17:00	REST	FAC	5.00	

Start Date	Summary
2/7/2022	HSE meeting, wellhead gas/pressure checks, dig plan review, location line sweep, unload equipment, excavate around wellhead to expose risers, removed old plumbing, made up new assemblies, painted new valves as per code, backfilled excavation, cleared location of brush and mesquite trees, load/secure equipment, location is prepped.
4/19/2022	Move on. JSA and safety meeting, complete permits, update whiteboard, establish muster areas. Spot rig, R/U. Spot tanks. Spot pump and R/U hard lines and return lines. Secure location for night.
4/20/2022	JSA and safety meeting. Offload ancillary equipment from flatbed and trailers. Check pressures - 100 psi on tubing, 850 psi on production casing, 70 psi on intermediate casing, 0 psi on surface casing. Bleed down all strings (production casing bled down very fast). Positive pressure test casing 1000 psi, tubing passed negative pressure test 1000 psi. Establish injection into formation 1bpm @ 900 psi. Recieve approval from NMOCD to squeeze plug below packer. Mix and squeeze 35 sx class C 1.32 yield 14.8 ppg cement w/ 2% cc @ 4660'-4997'. Shut in pressure 1000 psi. WOC. Bleed off pressure and N/D tree. Hangar was stuck. While tree was off and crew was addressing hangar, it was apparent the tubing was passing a bubble test. N/U 7-1/16" 5K BOP. Pressure test BOP 250 psi for 5 minutes, 1000 psi for 10 minutes, held good. R/U workflow, tubing equipment, and geranimo. Work pipe and attempt to unseat packer, could not unseat. Recieved approval from NMOCD to leave packer @ 4610'. Stand back xx jts 2-3/8" tubing. Secure well for night.
4/21/2022	JSA and safety meeting. Check pressures - 0 psi tubing and casing, 70 psi intermediate, 0 psi surface. TOH 60 jts. Tongs break and cannot be repaired, must order another from Odessa. R/U new tongs. TOH rest of tubing, 145 jts 2 -3/8" IPC total. Remove on off tool. TIH 145 jts tubing, tag packer @ 4610'. Pressure test casing 1100 psi for 15 minutes held good. Mix and spot 25 bbls MLF good up to first perf. Mix and spot 35 sx class C 1.32 yield 14.8 ppg cement @ 4610'-4273'. (NMOCD waived tag due to passing pressure test.) TOH 23 jts 2-3/8" IPC tubing, EOT @ 3900'. Mix and spot 30 sx class C 1.32 yield 14.8 ppg cement @ 3900'-3611'. TOH L/D 43 jts 2-3/8", stand back 80 jts 2-3/8". R/U wireline, make up 5 spf DP gun. RIH & perf @ 3075'. Attempt injection, pressured up 1000 psi for 15 minutes. Recieved approval from NMOCD to spot plug w/o tag. R/U wireline and make up 4 spf DP. RIH perf @ 2100'. Establish injection, 3.5 bpm @ 500 psi. Broke circulation but only about 1/8-1/4 bpm. 400 psi SIP. Secure well for night.
4/22/2022	JSA and safety meeting. Check pressures. TIH 98 jts 2-3/8" tubing, EOT @ 3125'. Mix and spot 11 bbls MLF salt gel up to 2100'. Mix and spot 60 sx class C 1.32 yield 14.8 ppg cement @ 3125'-2547' per NMOCD approval. TOH 50 jts 2-3/8" EOT @ 1525'. Mix and squeeze 75 sx class C 1.32 yield 14.8 ppg cement @ 2100'-1840'. WOC. TIH w/ 10 jts 2-3/8" Tag TOC @ 1839'. Mix and spot 8 bbls MLF slat get to 1500'. Flow check intermediate, would not bleed down, at least .25 bpm rate. Shut in well and let pressure rise, intermediate had 250 psi in less than 15 minutes. TOH, 36 jts EOT @ 700'. Make up 4 spf DP and R/U wireline. RIH perf @ 1500'. R/D wireline. Mix and squeeze 125 sx @ 1500'-989' w/ approval from NMOCD. Shut in well bled down to 90 psi, no rise in pressure for 30 minutes.
4/25/2022	JSA and safety meeting. Check pressures - 100 psi tubing and production casing, 70 psi intermediate, 0 psi surface casing. Tag TOC @ 943' w/ 30 jts. Spot 16 bbls MLF to 265'. TOH L/D 30 jts. Bubble test surface, intermediate, and production strings, all pass. R/U wireline and make up 5 spf DP. RIH perf @ 265'. Circulate 20 bbls 10 ppg brine through surface casing. R/D wireline. R/D tubing equipment, R/D workflow. N/D 7-1/16" 5K. N/U B1 flange. Circulate 190 sx class C 1.32 yield 14.8 ppg cement through production, intermediate, and surface strings from 265'-0'. Cement also circulated through ground. Shut in well and clean equipment. Crew lunch break. R/D equipment and load equipment. R/D cement equipment, hardlines, and pump. Move out.
5/11/2022	HSE meeting, hazard hunt, wellhead gas/pressure checks, verified dig plan, performed location line sweep, unload equipment, removed recycable parts, excavted/cut anchors, backfilled diggings, excavated bell hole around wellhead, slopped excavation, built access ramp, rigged up oscillating saw, cut wellhead, removed saw from hole, toppled/removed wellhead from hole, welded well ID/markng pole to well stump, backfilled excavation, painted marking pole, picked up metal scrap, load/secured equipment, location is restored.

As Plugged Wellbore Diagram

Created: 04/24/19 By: _____
 Updated: _____ By: _____
 Lease: West Lovington Unit
 Field: West Lovington Unit
 Surf. Loc.: 660 FSL & 660 FEL
 Bot. Loc.: _____
 County: Lea St.: NM
 Status: _____

Well #: 29 St. Lse: _____
 API: 30-025-03894
 Unit Ltr.: P Section: 6
 TSHR/Rng: 17S-36E
 Unit Ltr.: _____ Section: _____
 TSHR/Rng: _____
 Directions: Lovington, NM
 Chevno: FA5041

Surface Casing

Size: 13-3/8"
 Wt., Grd.: 48#
 Depth: 215'
 Sxs Cmt: 200
 Circulate: Yes
 TOC: Surface
 Hole Size: 17-1/4"

KB: _____
 DF: _____
 GL: 3,914
 Ini. Spud: 02/21/45
 Ini. Comp.: 04/05/45

Intermediate Casing

Size: 8-5/8"
 Wt., Grd.: 28#
 Depth: 2006'
 Sxs Cmt: 200
 Circulate: _____
 TOC: 1172 100% FILL-UP
 Hole Size: 11"

Perf at 265'
 Circulate cement to surface
 on all strings. WOC, verify
 cement @ surface.

Perforate at 1500'
 Spot and squeeze 125 sacks Class C
 cement to 989' Tag at 943'.

Perf at 2100'
 Cmt from 2100' to 1840'
 Squeeze 75 sacks Class C cement
 WOC & Tag at 1839'.

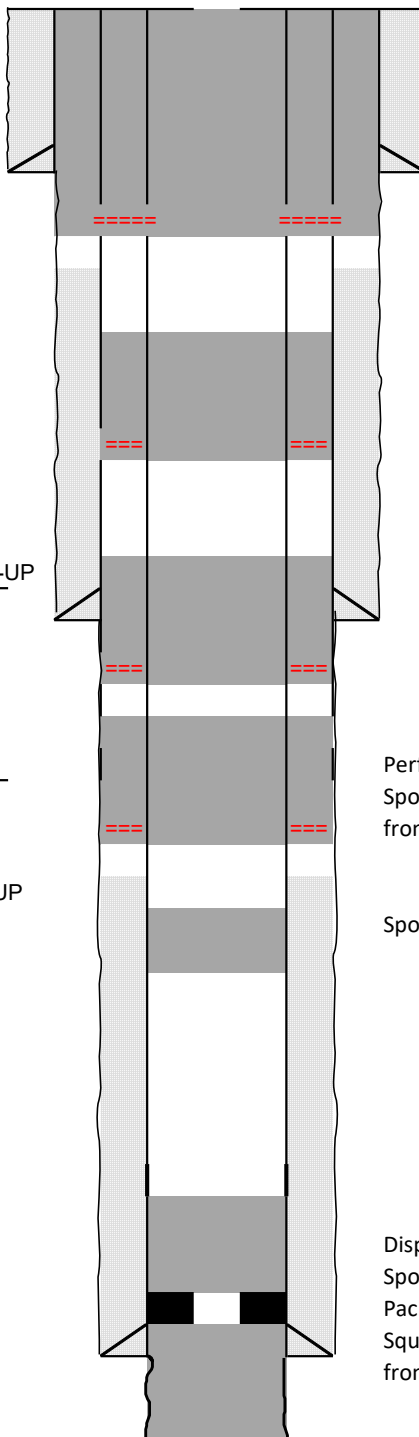
Production Casing

Size: 5-1/2"
 Wt., Grd.: 14#
 Depth: 4720'
 Sxs Cmt: 200
 Circulate: _____
 TOC: 3683 50% FILL-UP
 Hole Size: 7"

Perf at 3075', no injection
 Spot 60 sacks Class C cement
 from 3125' to 2547'

Spot 30 sacks Class C cement from 3900'

Displace Hole with MLF
 Spot 35 sacks Class C cement from 4610'
 Packer at 4610'
 Squeeze 35 sacks Class C cement below p
 from 4660' to 4997'



District I
1625 N. French Dr., Hobbs, NM 88240
Phone:(575) 393-6161 Fax:(575) 393-0720
District II
811 S. First St., Artesia, NM 88210
Phone:(575) 748-1283 Fax:(575) 748-9720
District III
1000 Rio Brazos Rd., Aztec, NM 87410
Phone:(505) 334-6178 Fax:(505) 334-6170
District IV
1220 S. St Francis Dr., Santa Fe, NM 87505
Phone:(505) 476-3470 Fax:(505) 476-3462

State of New Mexico
Energy, Minerals and Natural Resources
Oil Conservation Division
1220 S. St Francis Dr.
Santa Fe, NM 87505

COMMENTS

Action 127247

COMMENTS

Operator: CHEVRON U S A INC 6301 Deauville Blvd Midland, TX 79706	OGRID: 4323
	Action Number: 127247
	Action Type: [C-103] Sub. Plugging (C-103P)

COMMENTS

Created By	Comment	Comment Date
plmartinez	DATA ENTRY PM	10/12/2022

District I
1625 N. French Dr., Hobbs, NM 88240
Phone:(575) 393-6161 Fax:(575) 393-0720

District II
811 S. First St., Artesia, NM 88210
Phone:(575) 748-1283 Fax:(575) 748-9720

District III
1000 Rio Brazos Rd., Aztec, NM 87410
Phone:(505) 334-6178 Fax:(505) 334-6170

District IV
1220 S. St Francis Dr., Santa Fe, NM 87505
Phone:(505) 476-3470 Fax:(505) 476-3462

State of New Mexico
Energy, Minerals and Natural Resources
Oil Conservation Division
1220 S. St Francis Dr.
Santa Fe, NM 87505

CONDITIONS

Action 127247

CONDITIONS

Operator: CHEVRON U S A INC 6301 Deauville Blvd Midland, TX 79706	OGRID: 4323
	Action Number: 127247
	Action Type: [C-103] Sub. Plugging (C-103P)

CONDITIONS

Created By	Condition	Condition Date
kfortner	Need C103Q and marker pics to release	10/12/2022