

Well Name: LINDRITH UNIT NP	Well Location: T24N / R3W / SEC 3 / SWNW / 36.342109 / -107.149104	County or Parish/State: RIO ARRIBA / NM
Well Number: 4	Type of Well: CONVENTIONAL GAS WELL	Allottee or Tribe Name:
Lease Number: NMSF078911	Unit or CA Name:	Unit or CA Number:
US Well Number: 300390564700S1	Well Status: Abandoned	Operator: MORNINGSTAR OPERATING LLC

Subsequent Report

Sundry ID: 2698723

Type of Submission: Subsequent Report	Type of Action: Plug and Abandonment
Date Sundry Submitted: 10/19/2022	Time Sundry Submitted: 10:14
Date Operation Actually Began: 09/19/2022	

Actual Procedure: MorningStar Operating has plugged and abandoned the Lindrith Unit NP #4 as of 9/26/2022. Attached are the Daily and Cement Reports, Final WBD, Sub-surface PA Marker information, and CBL.

SR Attachments

Actual Procedure

PA_Dailies__WBD__PA_Marker_Info__CBL_Lindrith_Unit_NP_4_20221019101317.pdf

Well Name: LINDRITH UNIT NP	Well Location: T24N / R3W / SEC 3 / SWNW / 36.342109 / -107.149104	County or Parish/State: RIO ARRIBA / NM
Well Number: 4	Type of Well: CONVENTIONAL GAS WELL	Allottee or Tribe Name:
Lease Number: NMSF078911	Unit or CA Name:	Unit or CA Number:
US Well Number: 300390564700S1	Well Status: Abandoned	Operator: MORNINGSTAR OPERATING LLC

Operator

I certify that the foregoing is true and correct. Title 18 U.S.C. Section 1001 and Title 43 U.S.C. Section 1212, make it a crime for any person knowingly and willfully to make to any department or agency of the United States any false, fictitious or fraudulent statements or representations as to any matter within its jurisdiction. Electronic submission of Sundry Notices through this system satisfies regulations requiring a

Operator Electronic Signature: CONNIE BLAYLOCK	Signed on: OCT 19, 2022 10:13 AM
Name: MORNINGSTAR OPERATING LLC	
Title: Regulatory Technician	
Street Address: 400 W 7th St.	
City: Forth Worth	State: TX
Phone: (817) 334-7882	
Email address: CBLAYLOCK@MSPARTNERS.COM	

Field

Representative Name: Amy Byars		
Street Address:		
City:	State:	Zip:
Phone:		
Email address: abyars@mspartners.com		

BLM Point of Contact

BLM POC Name: KENNETH G RENNICK	BLM POC Title: Petroleum Engineer
BLM POC Phone: 5055647742	BLM POC Email Address: krennick@blm.gov
Disposition: Accepted	Disposition Date: 10/19/2022
Signature: Kenneth Rennick	

Morningstar Operating LLC

Plug And Abandonment End Of Well Report

Lindrith Unit NP #004

1840' FNL & 11160' FWL, Section 3, 24N, 03W

Rio Arriba County, NM / API 30-039-05647

Work Summary:

- 9/18/22** Made BLM and NMOCD P&A operations notifications at 9:00 AM MST.
- 9/19/22** Arrived on location and held safety meeting. R/U P&A rig. Checked well pressures: Tubing 0 psi, Casing: 0 psi, Bradenhead: 0 psi. Bled down well. N/D wellhead. N/U BOP and function tested. Set up equipment for 1" tubing. L/D 164 joints of 1" tubing, bottom Joints were deteriorated. Change out equipment for 2-3/8" work string. P/U 5.5" casing scraper and TIH to 3255'. TOOH. L/D casing scraper. Secured and shut in well for the day.
- 9/20/22** Arrived on location and held safety meeting. Checked well pressures: Tubing 0 psi, Casing: 0 psi, Bradenhead: 0 psi. Bled down well. P/U 5.5" CR. TIH and set CR at 3400'. Successfully circulated hole with 10 bbls, pumped a total of 60 bbls. Attempted to pressure test casing but casing failed. TOOH. R/U wireline. RIH and logged well. R/D wireline. TIH to 3400'. R/U cementing services. Pumped plug #1 from 3400' to approximately 3100' to cover the Pictured Cliffs perforations, Kirtland and Fruitland formation tops. R/D cementing services. L/D 9 joints and TOOH. Secured and shut in well for the day.
- 9/21/22** Arrived on location and held safety meeting. Checked well pressures: Tubing 0 psi, Casing: 0 psi, Bradenhead: 0 psi. TIH and tagged top of plug #1 at 3035'. TOOH. R/U wireline. RIH and perforated at 2950'. R/D wireline. TIH with 5.5" packer and set at 2782'. Attempted to establish an injection rate but was unsuccessful, casing pressured up to 500 PSI. Unset packer and TOOH. TIH to

3003'. R/U cementing services and pumped plug #2 from 3003' to 2747' to cover the Ojo Alamo Formation top. R/D cementing services. L/D 8 joints and TOOH. WOC 4 hours. TIH and tagged TOC at 2744'. Attempted to pressure test casing but was unsuccessful. L/D 10 joints. Secured and shut in well for the day.

9/22/22 Arrived on location and held safety meeting. Checked well pressures: Tubing: 0 psi, Casing: 0 psi, Bradenhead: 0 psi. Bled down well. TOOH. R/U wireline. RIH and perforated at 1585'. POOH and R/D wireline. TIH with packer and attempted to set at 1452' but was unable to set. Moved packer up and do 30' and attempted to set with no success. TOOH. Inspected packer and found shear pins were broken. Shut down due to lightning and weather. Secured and shut in well for the day.

9/23/22 Arrived on location and held safety meeting Checked well pressures: Tubing: 0 psi, Casing: 0 psi, Bradenhead: 0 psi. Bled down well. TIH with 5.5" packer and set at 1452'. Attempted to establish injection rate but was unsuccessful, casing pressured up to 700 PSI. Unset packer and TOOH. TIH to 1639'. R/U cementing services. Pumped plug #3 from 1639' to approximately 1382' to cover the Nacimiento formation top. R/D cementers. L/D 7 joints and TOOH. WOC overnight. Secured and shut in well for the day

9/26/22 Arrived on location and held safety meeting. Checked well pressures: Tubing: 0 psi, Casing: 0 psi, Bradenhead: 0 psi. Bled down well. TIH and tagged top of plug #3 at 1355'. L/D 37 joints and TOOH. R/U wireline services. RIH and perforated at 183'. R/D wireline services. TIH with 5.5" packer. Set packer at 167'. R/U cementing services. Successfully circulated 15 bbls of water through packer, into perforations, and out the BH valve. Successfully pressure tested 5.5" production casing above packer to 500 PSI. Unset packer and L/D tubing. Pumped cement down 5.5" casing, through perforations and out BH valve at surface. R/D cementing services. R/D floor, N/D BOP, N/U WH. WOC 4 hours. Performed wellhead cut off. Cement was 30' below surface in 5.5" casing and 6' below surface in 9.6" casing. R/U cementing services. Pumped cement to surface and both 5.5" and 9.6" casing. R/D cementing services. Installed P&A marker per NMOCD regulations. R/D P&A unit and MOL.

Plug Summary:**Plug #1: (Pictured Cliff Perforations. Pictured Cliffs, Kirtland, and Fruitland formation top 3,400'-3,035', 30 Sacks Type III Cement)**

Set CR at 3400'. Successfully circulated hole with 10 bbls, pumped at total of 60 bbls. Attempted to pressure test casing but casing failed. TOOH. TIH to 3400'. R/U cementing services. Pumped plug #1 from 3400' to approximately 3100' to cover the Pictured Cliffs perforations, Kirtland, and Fruitland formation tops. WOC overnight. TIH and tagged top of plug #1 at 3035'

Plug #2: (Ojo Alamo Formation Top 3,003'-2,744', 25 Sacks Type III Cement)

R/U wireline. RIH and perforated at 2950'. R/D wireline. TIH with 5.5" packer and set at 2782'. Attempted to establish an injection rate but was unsuccessful, casing pressured up to 500 PSI. Unset packer and TOOH. TIH to 3003'. R/U cementing services and pumped plug #2 from 3003' to 2747' to cover the Ojo Alamo Formation top. R/D cementing services. L/D 8 joints and TOOH. WOC 4 hours. TIH and tagged TOC at 2744'.

Plug #3: (Nacimiento Formation Top, 1639' to 1355', 25 Sacks Type III Cement)

R/U wireline. RIH and perforated at 1585'. POOH and R/D wireline. TIH with 5.5" packer and set at 1452'. Attempted to establish injection rate but was unsuccessful, casing pressured up to 700 PSI. Unset packer and TOOH. TIH to 1639'. R/U cementing services. Pumped plug #3 from 1639' to approximately 1382' to cover the Nacimiento formation top. R/D cementers. L/D 7 joints and TOOH. WOC overnight. TIH and tagged top of plug #3 at 1355'

Plug #4: (Surface Casing Shoe, 183' to Surface, 86 Sacks Type III Cement [23 Sacks for Top Off])

R/U wireline services. RIH and perforated at 183'. R/D wireline services. TIH with 5.5" packer. Set packer at 167'. R/U cementing services. Successfully circulated 15 bbls of water through packer, into perforations, and out the BH valve. Successfully pressure tested 5.5" production casing above packer to 500 PSI. Unset packer and L/D tubing. Pumped cement down 5.5" casing, through perforations and out BH valve at surface. R/D cementing services. R/D floor, N/D BOP, N/U WH. WOC 4 hours. Performed wellhead cut off. Cement was 30' below surface in 5.5" casing and 6' below surface in 9.6"

casing. R/U cementing services. Pumped cement to surface in both 5.5" and 9.6" casing.

P & A Daily Report



PO Box 538 Farmington, NM 87499 505.327.7301

Company:	Morningstar Operating
Well Name:	Lindrith Unit #4
API #:	30-039-05647
Date:	9/19/2022

WORK SUMMARY

Arrived on location and held safety meeting. R/U P&A rig. Checked well pressures (see pressures below). Bled down well. N/D wellhead. N/U BOP and function tested. Set up equipment for 1" tubing. L/D 164 joints of 1" tubing, bottom Joints were deteriorated. Change out equipment for 2-3/8" work string. P/U 5.5" casing scraper and TIH to 3255'. TOOH. L/D casing scraper. Secured and shut in well for the day.

PLUG SUMMARY

<u>Plug No</u>	<u>Plug Depth</u>	<u>Sacks of Cement Used</u>
Plug 1	To	
Plug 2	To	
Plug 3	To	
Plug 4	To	
Plug 5	To	
Plug 6	To	
Plug 7	To	
Plug 8	To	
Plug 9	To	

BRIDGE PLUG/CEMENT RETAINER SUMMARY

<u>Depth Set</u>

WELL PRESSURES

Tubing	0 psi
Casing	0 psi
Bradenhead	0 psi

P & A Daily Report



PO Box 538 Farmington, NM 87499 505.327.7301

Company:	Morningstar Operating
Well Name:	Lindrith Unit NP #004
API #:	30-039-05647
Date:	9/20/2022

WORK SUMMARY

Arrived on location and held safety meeting. Checked well pressures (see pressures below). Bled down well. P/U 5.5" CR. TIH and set CR at 3400'. Successfully circulated hole with 10 bbls, pumped at total of 60 bbls. Attempted to pressure casing but casing failed. TOOH. R/U wireline. RIH and logged well. R/D wireline. TOOH to 3400'. R/U cementing services. Pumped plug #1 from 3400' to approximately 3100' to cover Pictured Cliffs perforations, Kirtland and Fruitland formation tops. R/D cementing services. L/D 9 joints and TOOH. Secured and shut in well for the day.

PLUG SUMMARY

<u>Plug No</u>	<u>Plug Depth</u>	<u>Sacks of Cement Used</u>
Plug 1 3400' To	3100'	30 sx Type III Cement
Plug 2	To	
Plug 3	To	
Plug 4	To	
Plug 5	To	
Plug 6	To	
Plug 7	To	
Plug 8	To	
Plug 9	To	

BRIDGE PLUG/CEMENT RETAINER SUMMARY

<u>Depth Set</u>
3400'

WELL PRESSURES

Tubing	0 psi
Casing	0 psi
Bradenhead	0 psi

P & A Daily Report

Drake

WELL SERVICE INC.



PO Box 538 Farmington, NM 87499 505.327.7301

Company: Morningstar Operating

Well Name: Lindrith Unit NP #004

API #: 30-039-05647

Date: 9/21/2022

WORK SUMMARY

Arrived on location and held safety meeting. Checked well pressures (see pressures below). Bled down well. TIH and tagged top of plug #1 at 3035'. TOOH. R/U wireline. RIH and perforated at 2950'. R/D wireline. TIH with 5.5" packer and set at 2782'. Attempted to establish an injection rate but was unsuccessful, casing pressured up to 500 PSI. Unset packer and TOOH. TIH to 3003'. R/U cementing services and pumped plug #2 from 3003' to 2747' to cover the Ojo Alamo Formation top. R/D cementing services. L/D 8 joints and TOOH. WOC 4 hours. TIH and tagged TOC as 2744'. Attempted to pressure test casing but was unsuccessful. L/D 10 joints. Secured and shut in well for the day.

PLUG SUMMARY

<u>Plug No</u>		<u>Plug Depth</u>		<u>Sacks of Cement Used</u>
Plug 1	3400'	To	3035'	30 sx Type III Cement
Plug 2	3003'	To	2744'	25 sx Type II Cement
Plug 3		To		
Plug 4		To		
Plug 5		To		
Plug 6		To		
Plug 7		To		
Plug 8		To		
Plug 9		To		

BRIDGE PLUG/CEMENT RETAINER SUMMARY

<u>Depth Set</u>
3400'

WELL PRESSURES

Tubing	0 psi
Casing	0 psi
Bradenhead	0 psi

P & A Daily Report



PO Box 538 Farmington, NM 87499 505.327.7301

Company:	Morningstar Operating
Well Name:	Lindrith Unit NP #004
API #:	30-039-05647
Date:	9/22/2022

WORK SUMMARY

Arrived on location and held safety meeting. Checked well pressures (see pressures below). Bled down well. TOOH. R/U wireline. RIH and perforated at 1585'. POOH and R/D wireline. TIH with packer and attempted to set at 1452' but was unable to set. Moved packer up and do 30' and attempted to set with no success. TOOH. Inspected packer and found shear pins were broken. Shut down due to lightning and weather. Secured and shut in well for the day.

PLUG SUMMARY

Plug No	Plug Depth	Sacks of Cement Used
Plug 1 3400'	To 3035'	30 sx Type III Cement
Plug 2 3003'	To 2744'	25 sx Type II Cement
Plug 3	To	
Plug 4	To	
Plug 5	To	
Plug 6	To	
Plug 7	To	
Plug 8	To	
Plug 9	To	

BRIDGE PLUG/CEMENT RETAINER SUMMARY

Depth Set
3400'

WELL PRESSURES

Tubing	0 psi
Casing	0 psi
Bradenhead	0 psi

P & A Daily Report



PO Box 538 Farmington, NM 87499 505.327.7301

Company:	Morningstar Operating
Well Name:	Lindrith Unit NP #004
API #:	30-039-05647
Date:	9/23/2022

WORK SUMMARY

Arrived on location and held safety meeting. Checked well pressures (see pressures below). Bled down well. TIH with 5.5" packer and set at 1452'. Attempted to establish injection rate but was unsuccessful, casing pressured up to 700 PSI. Unset packer and TOOH. TIH to 1639'. R/U cementing services. Pumped plug #3 from 1639 to approximately 1382' to cover the Nacimiento formation top. R/D cementers. L/D 7 joints and TOOH. WOC overnight. Secured and shut in well for the day.

PLUG SUMMARY

Plug No	Plug Depth	Sacks of Cement Used
Plug 1 3400'	To 3035'	30 sx Type III Cement
Plug 2 3003'	To 2744'	25 sx Type III Cement
Plug 3 1639'	To 1382'	25 sx Type III Cement
Plug 4	To	
Plug 5	To	
Plug 6	To	
Plug 7	To	
Plug 8	To	
Plug 9	To	

BRIDGE PLUG/CEMENT RETAINER SUMMARY

Depth Set
3400'

WELL PRESSURES

Tubing	0 psi
Casing	0 psi
Bradenhead	0 psi

P & A Daily Report

Drake

WELL SERVICE INC.



PO Box 538 Farmington, NM 87499 505.327.7301

Company: Morningstar Operating

Well Name: Lindrith Unit NP #004

API #: 30-039-05647

Date: 9/26/2022

WORK SUMMARY

Arrived on location and held safety meeting. Checked well pressures (see pressures below). Bled down well. TIH and tagged top of plug #3 at 1355'. L/D 37 joints and TOOH. R/U wireline services. RIH and perforated at 183'. R/D wireline services. TIH with 5.5" packer. Set packer at 167'. R/U cementing services. Successfully circulated 15 bbls of water through packer, into perforations, and out the BH valve. Successfully pressure tested 5.5" production casing above packer to 500 PSI. Unset packer and L/D tubing. Pumped cement down 5.5" casing, through perforations and out BH valve at surface. R/D cementing services. R/D floor, N/D BOP, N/U WH. WOC 4 hours. Performed wellhead cut off. Cement was 30' below surface in 5.5" casing and 6' below surface in 9.6" casing. R/U cementing services. Pumped cement to service and both 5.5" and 9.6" casing. R/D cementing services. Installed P&A marker per NMOCD regulations. R/D P&A unit and MOL.

PLUG SUMMARY

<u>Plug No</u>		<u>Plug Depth</u>	<u>Sacks of Cement Used</u>
Plug 1	3400'	To 3035'	30 sx Type III Cement
Plug 2	3003'	To 2744'	25 sx Type III Cement
Plug 3	1639'	To 1355'	25 sx Type III Cement
Plug 4	183'	To Surface	86 sx Type III Cement (23 sx for top off)
Plug 5		To	
Plug 6		To	
Plug 7		To	
Plug 8		To	
Plug 9		To	

BRIDGE PLUG/CEMENT RETAINER SUMMARY

<u>Depth Set</u>
3400'

WELL PRESSURES

Tubing	0 psi
Casing	0 psi
Bradenhead	0 psi

**MorningStar
Operating, LLC**

P&A WBD

**Lindrith Unit NP #4
Rio Arriba County, NM**

All depths include KB
TD – 3,522'

Surface Csg: 3 jts 9 5/8" 25.4# PE
Setting Depth: 133'

Cement
125 sx Cement
Cmt circulated

Production Csg: 111 jts 5-1/2" 15.5# 8 rd
Setting Depth: 3,470'

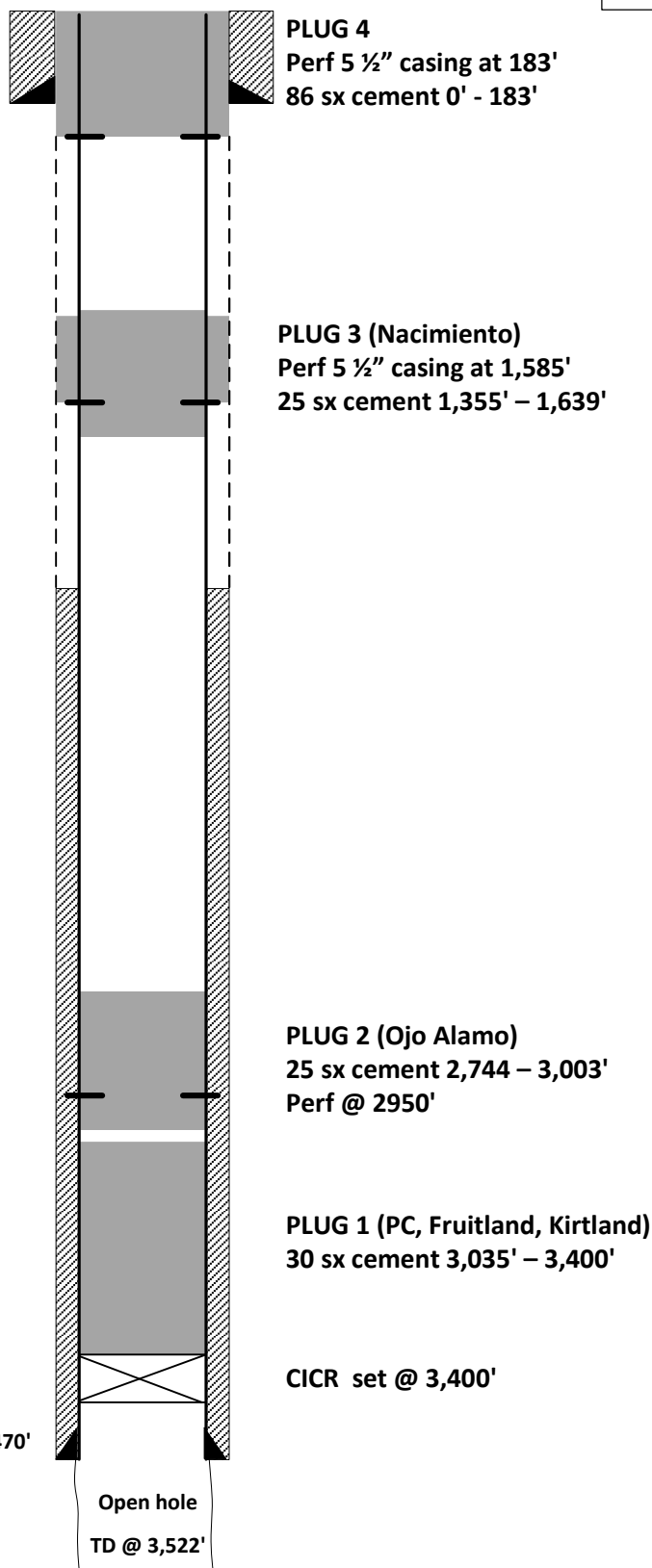
Cement:
150 sx cement

Prepared by: J. Marshall
Updated by: JRyza
Date: 09/28/2022

KB = 10'
GL = 7,189'
API# 30-039-05647

Spud Date: 07/17/1955
Date Completed: 08/08/1955

Nacimiento – 1,535'
Ojo Alamo – 2,902'
Kirtland – 3,248'
Fruitland – 3,285'
Picture Cliffs – 3,472'



No Perfs, open hole completion

DISTRICT I1625 N. French Dr., Hobbs, N.M. 88240
Phone: (575) 393-6161 Fax: (575) 393-0720**DISTRICT II**811 S. First St., Artesia, N.M. 88210
Phone: (575) 748-1283 Fax: (575) 748-9720**DISTRICT III**1000 Rio Brazos Rd., Aztec, N.M. 87410
Phone: (505) 334-6178 Fax: (505) 334-6170**DISTRICT IV**1220 S. St. Francis Dr., Santa Fe, NM 87505
Phone: (505) 476-3460 Fax: (505) 476-3462State of New Mexico
Energy, Minerals & Natural Resources DepartmentForm C-102
Revised August 1, 2011Submit one copy to appropriate
District OfficeOIL CONSERVATION DIVISION
1220 South St. Francis Dr.
Santa Fe, NM 87505☐ AMENDED REPORT

WELL LOCATION AND ACREAGE DEDICATION PLAT

¹ API Number 30-039-05647		² Pool Code 7439	³ Pool Name S BLANCO PICTURED CLIFFS
⁴ Property Code 21966	⁵ Property Name LINDRITH UNIT NP		⁶ Well Number 4
⁷ OGRID No. 330132	⁸ Operator Name MORNINGSTAR OPERATING LLC		⁹ Elevation 7200'

¹⁰ Surface Location

UL or lot no.	Section	Township	Range	Lot Idn	Feet from the	North/South line	Feet from the	East/West line	County
E	3	24N	3W		1848'	NORTH	1157'	WEST	RIO ARriba

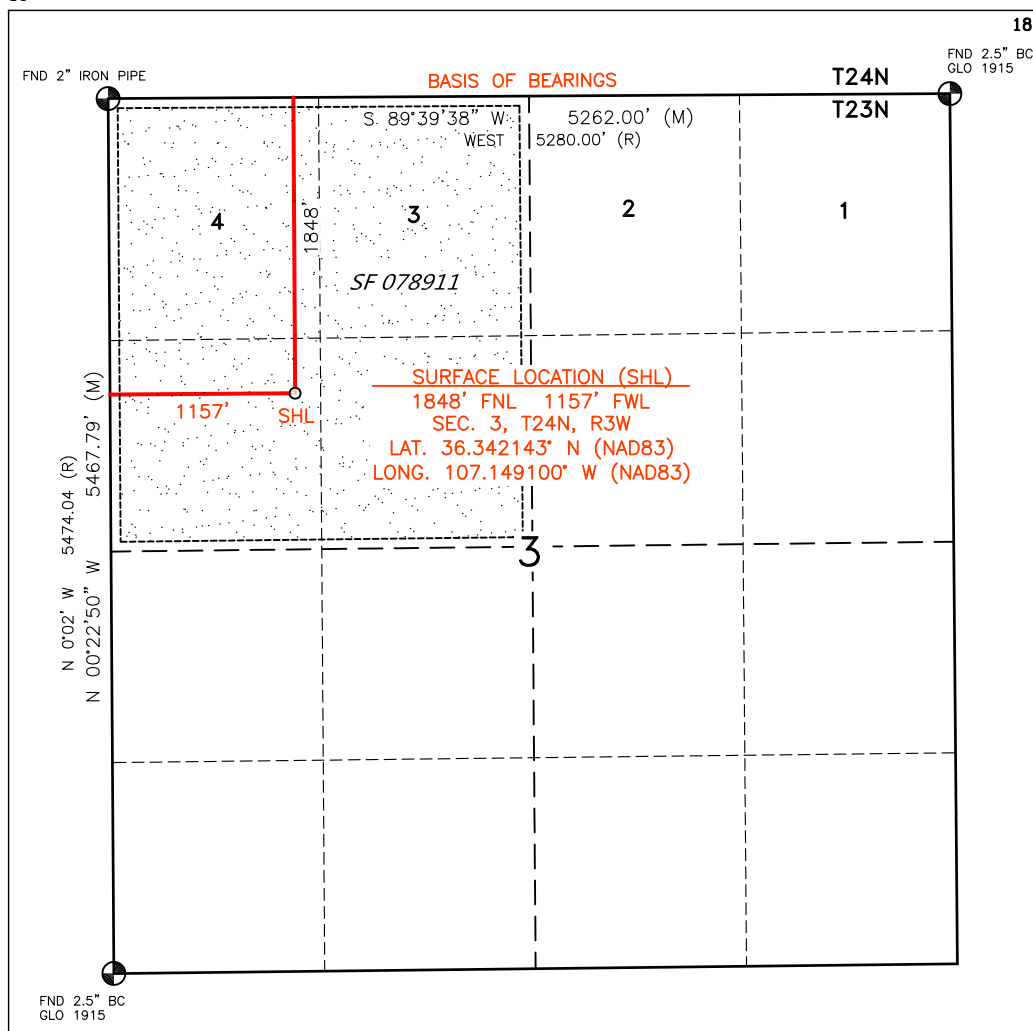
¹¹ Bottom Hole Location If Different From Surface

UL or lot no.	Section	Township	Range	Lot Idn	Feet from the	North/South line	Feet from the	East/West line	County

¹² Dedicated Acres NW/4 SEC. 3 171.38 ACRES	¹³ Joint or Infill	¹⁴ Consolidation Code	¹⁵ Order No.
--	-------------------------------	----------------------------------	-------------------------

NO ALLOWABLE WILL BE ASSIGNED TO THIS COMPLETION UNTIL ALL INTERESTS HAVE BEEN CONSOLIDATED
OR A NON-STANDARD UNIT HAS BEEN APPROVED BY THE DIVISION

16



18 17 OPERATOR CERTIFICATION

I hereby certify that the information contained herein is true and complete to the best of my knowledge and belief, and that this organization either owns a working interest or unleased mineral interest in the land including the proposed bottom hole location or has a right to drill this well at this location pursuant to a contract with an owner of such a mineral or working interest, or to a voluntary pooling agreement or a compulsory pooling order heretofore entered by the division.

Connie Blaylock 10/13/2022
Signature Date

Connie Blaylock
Printed Name

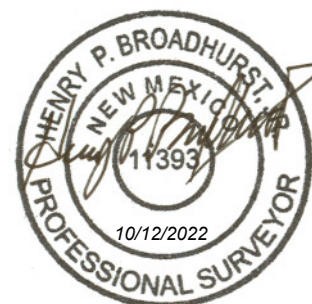
cblaylock@mspartners.com
E-mail Address

SURVEYOR CERTIFICATION

I hereby certify that the well location shown on this plat was plotted from field notes of actual surveys made by me or under my supervision, and that the same is true and correct to the best of my belief.

OCTOBER 7, 2022

Date of Survey
Signature and Seal of Professional Surveyor:



Certificate Number 11393

LINDRITH UNIT NP 4 PC



From: Jason Peace <JPeace@ctfieldsvcs.com>
Sent: Tuesday, October 18, 2022 9:13 AM
To: Connie Blaylock <cblaylock@mspartners.com>
Subject: FW: EXTERNAL:

Jason A. Peace
Foreman, Carson/Eul
MorningStar Operating LLC.
(505) 419-6055
jpeace@ctfieldsvcs.com

From: Ray Leeson <leesoprop@outlook.com>
Sent: Thursday, October 13, 2022 12:21 PM
To: Jason Peace <JPeace@ctfieldsvcs.com>
Subject: EXTERNAL:

To whom it may concern:

I, Ray Leeson, requested the P&A marker subsurface for future Ag uses.

Signed...Ray Leeson



PERFORMING - WIRELINE SERVICES



CEMENT BOND LOG
CASING COLLARS
GAMMA RAY / VDL

Company MORNINGSTAR OPERATING, LLC

Well LINDRITH UNIT NP #4

Field PICTURE CLIFFS

County RIO ARRIBBA State NEW MEXICO

Location: API # : 30-039-05647

1840' N & 1160' W

N/A

SEC 3 TWP 24N RGE 3W

Permanent Datum GROUND LEVEL Elevation 7189'

Log Measured From K.B. 10'

Elevation

Drilling Measured From KELLY BUSHING

K.B. 7199'
D.F. 7198'
G.L. 7189'

Date 9-20-2022

Run Number 1

Depth Driller 3470'

Depth Logger 3412'

Bottom Logged Interval 3412'

Top Log Interval SURFACE

Open Hole Size 7.625"

Type Fluid WATER

Density / Viscosity 8.4

Max. Recorded Temp. N/A

Estimated Cement Top SEE LOG

Time Well Ready 3:05 P.M.

Time Logger on Bottom 3:22 P.M.

Equipment Number T119

Location FARMINGTON

Recorded By M. MEDINA

Witnessed By CARLOS GUTIERREZ

Borehole Record

From Bit To Size Weight From To

Casing Record

Size 9.625" Wgt/Ft 25.4 # Top Bottom

Surface String

Production String


5.50" 15.5 # SURF. 3470'

<<< Fold Here >>>

All interpretations are opinions based on inferences from electrical or other measurements and we cannot and do not guarantee the accuracy or correctness of any interpretation, and we shall not, except in the case of gross or willful negligence on our part, be liable or responsible for any loss, costs, damages, or expenses incurred or sustained by anyone resulting from any interpretation made by any of our officers, agents or employees. These interpretations are also subject to our general terms and conditions set out in our current Price Schedule.

Comments

THANK YOU FOR USING BASIN WELL LOGGING

Sensor	Offset (ft)	Schematic	Description	Length (ft)	O.D. (in)	Weight (lb)
			CHD-STNDRD Standard Cable Head	1.00	1.69	10.00

WVFS8	8.83		8.92	2.75	90.00
WVFS7	8.83				
WVFS6	8.83				
WVFS5	8.83				
WVFS4	8.83				
WVFS3	8.83				
WVFS2	8.83				
WVFS1	8.83				
WVFCAL	8.83				
WVF3FT	8.83				
WVF5FT	7.75				
HEADVOLT	4.50				
CCL	3.75				
GR	0.90	GR275detector-Probe275Gr (110774) Probe 2.75" Dectector on Bottom	4.50	2.75	30.00
Dataset: lindrith unit np#4.db: field/well/run1/pass6 Total length: 14.42 ft Total weight: 130.00 lb O.D.: 2.75 in					

Database File lindrith unit np#4.db

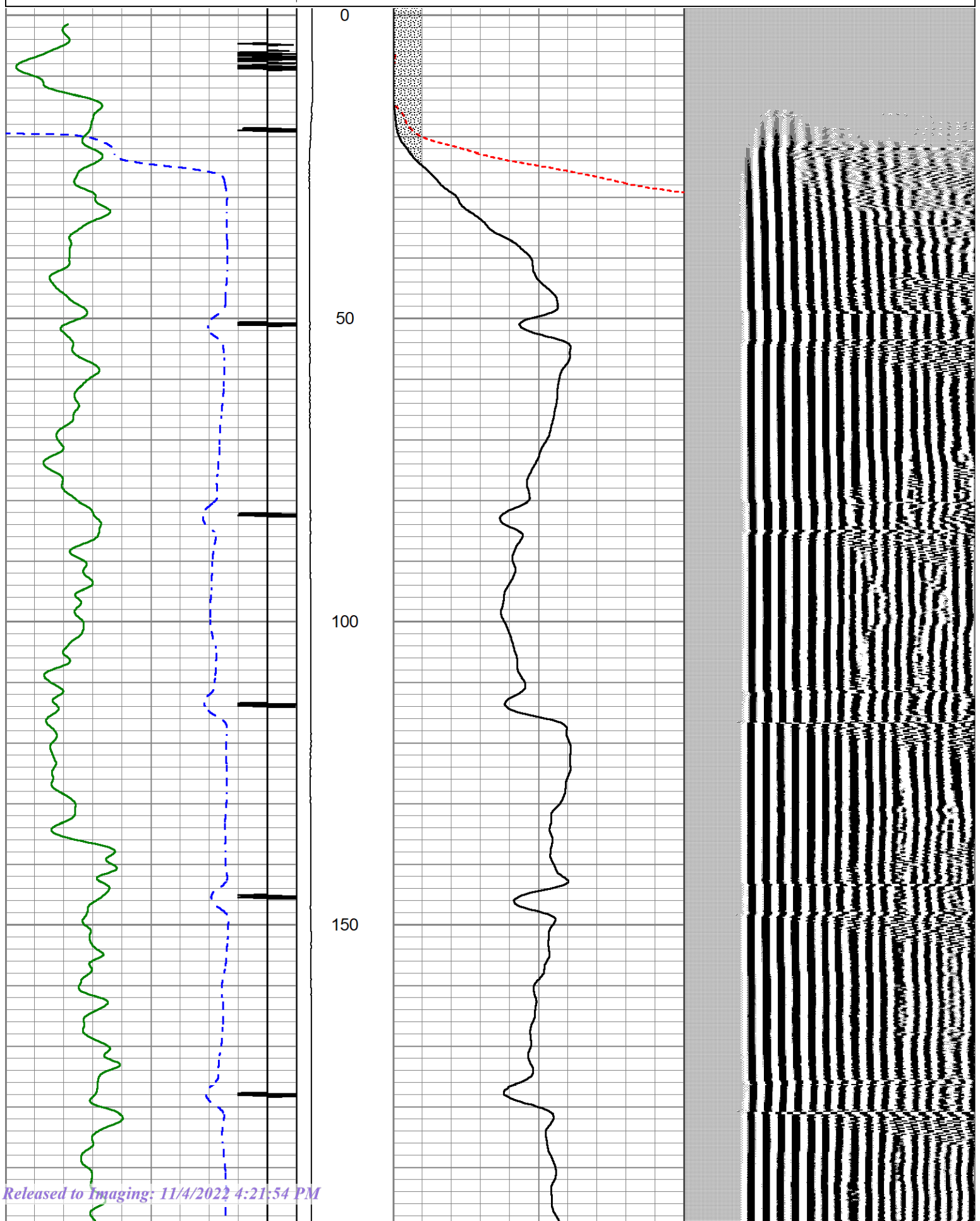
Dataset Pathname pass6

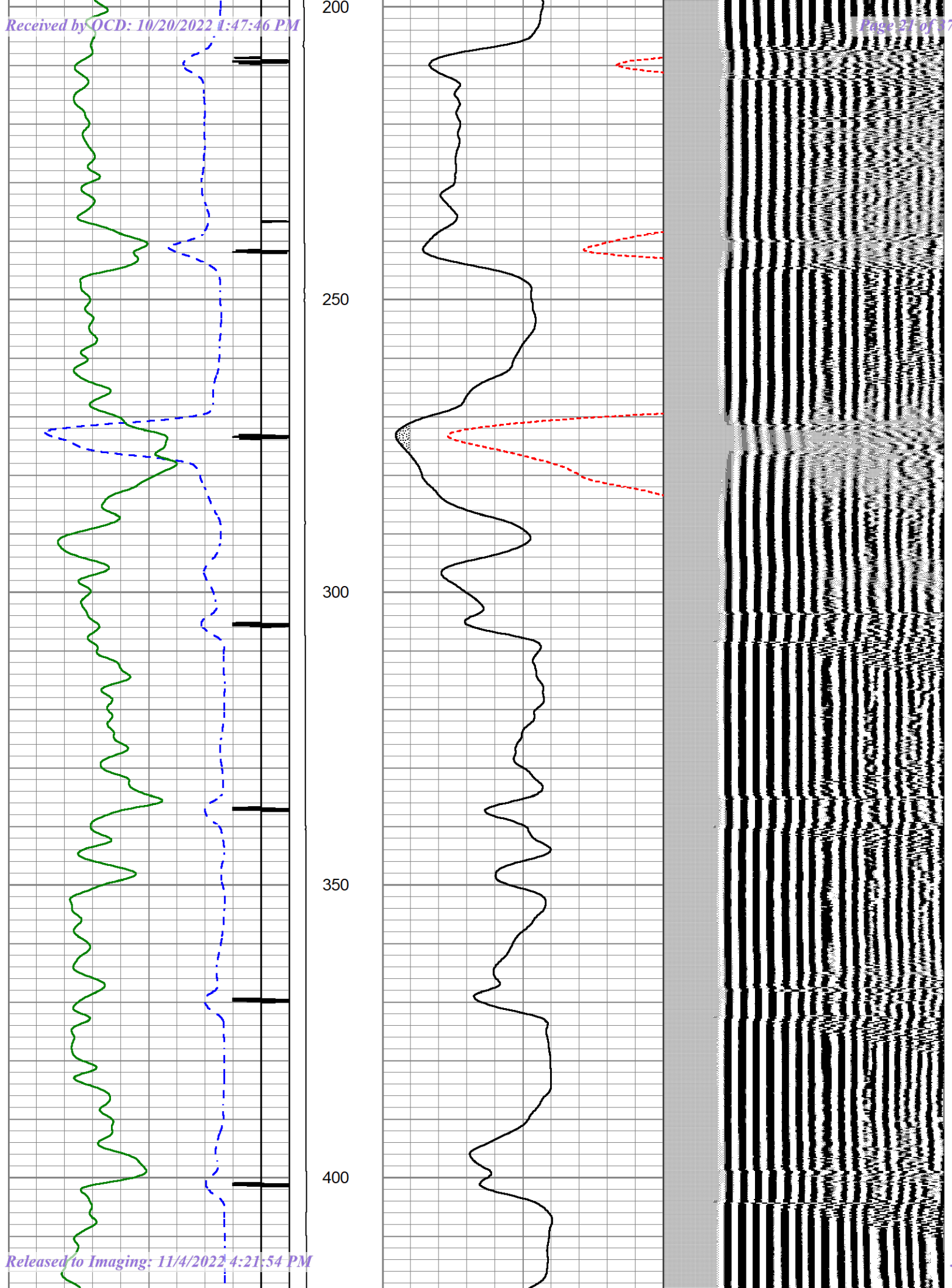
Presentation Format cbl dr

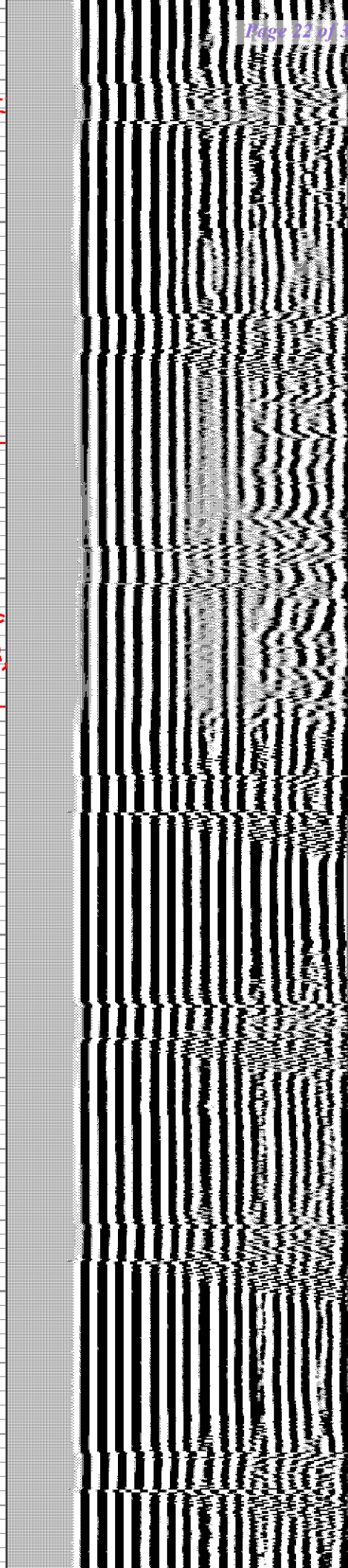
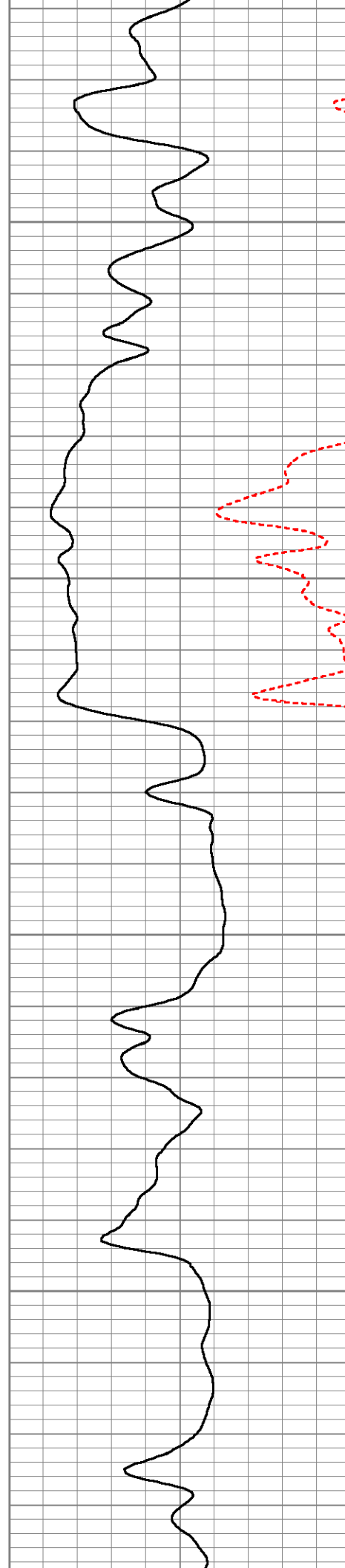
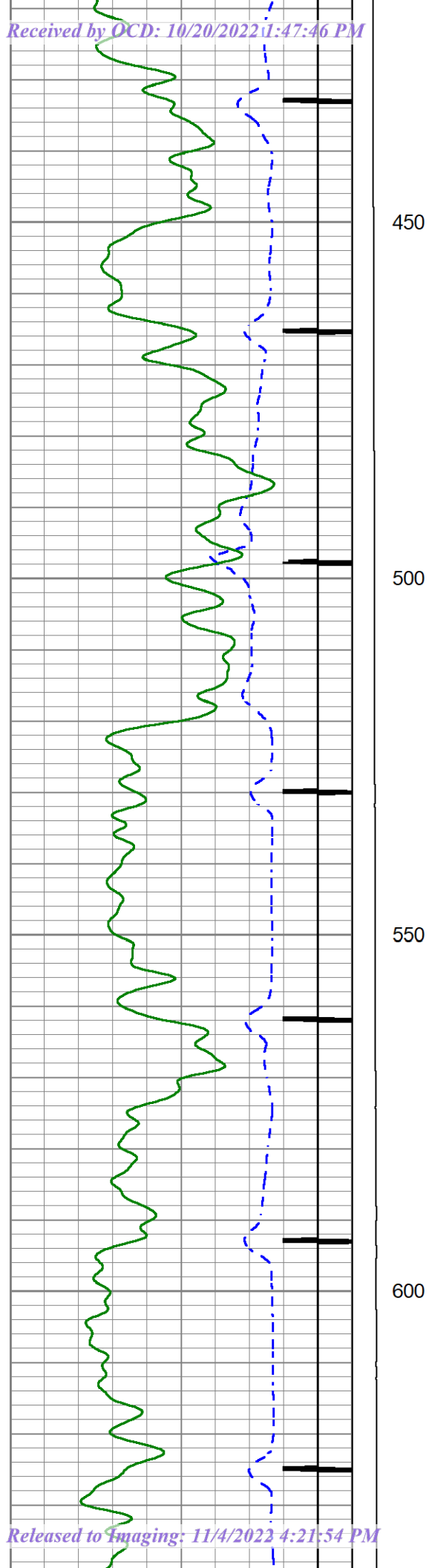
Dataset Creation Tue Sep 20 15:21:30 2022

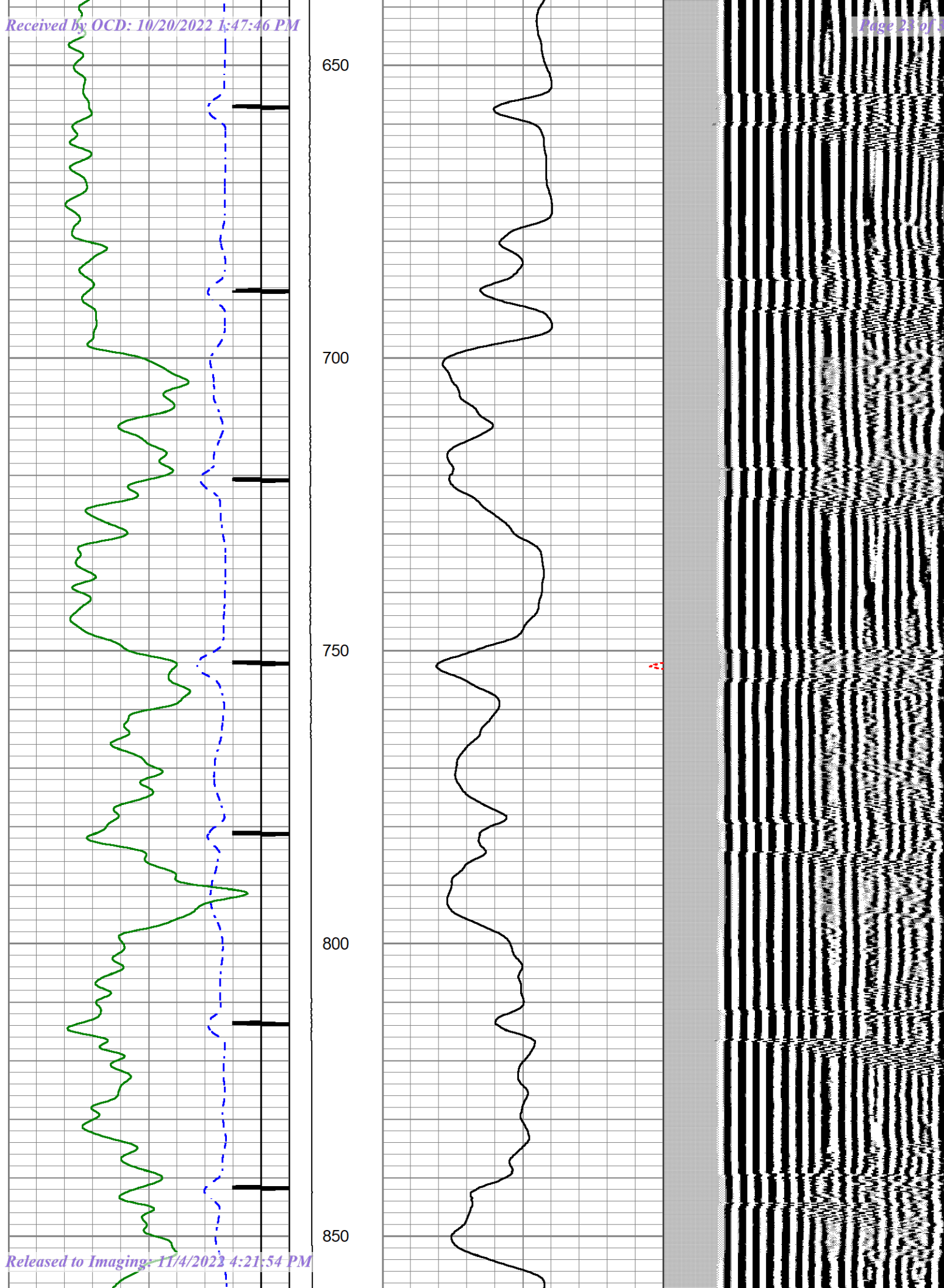
Charted by Depth in Feet scaled 1:240

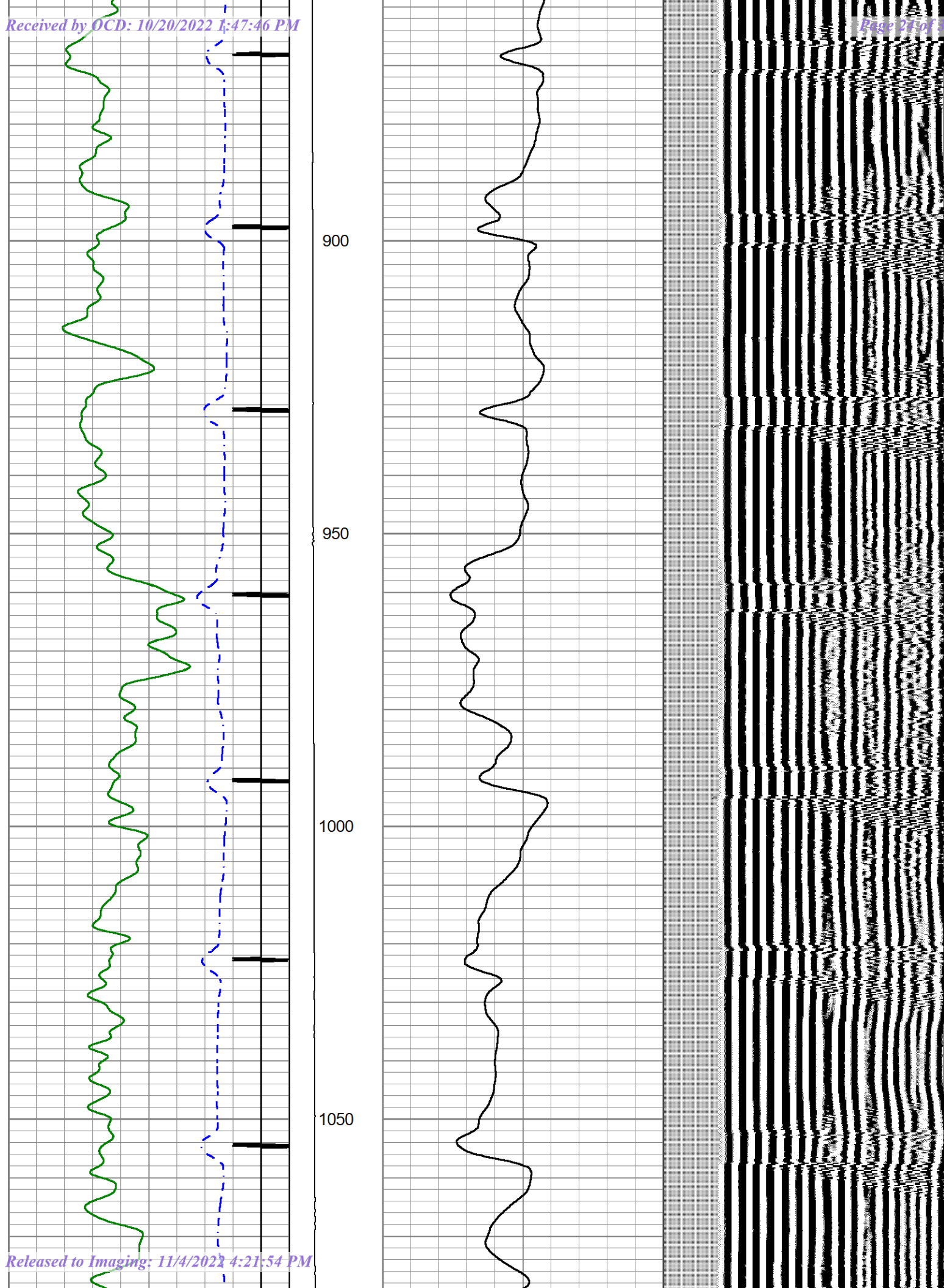
360	TRAVEL TIME (usec)	260	LTEN	0	AMP AMPLITUDE (mV)	20	200	VDL (usec)	1200
9	Collar Locator	-1	0	(lb 1500	0	AMPLITUDE (mV)	100		
0	Gamma Ray (GAPI)	185							

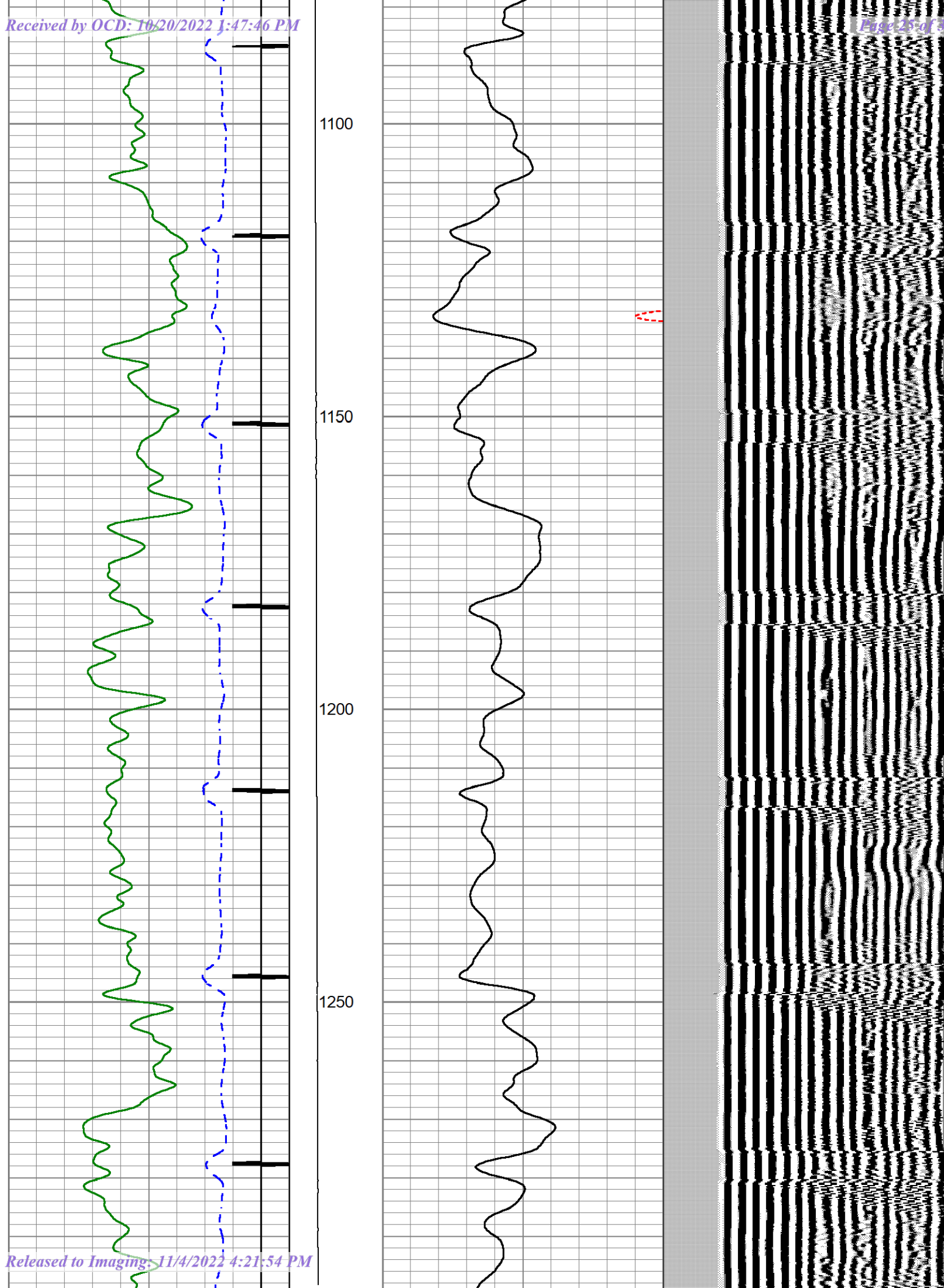


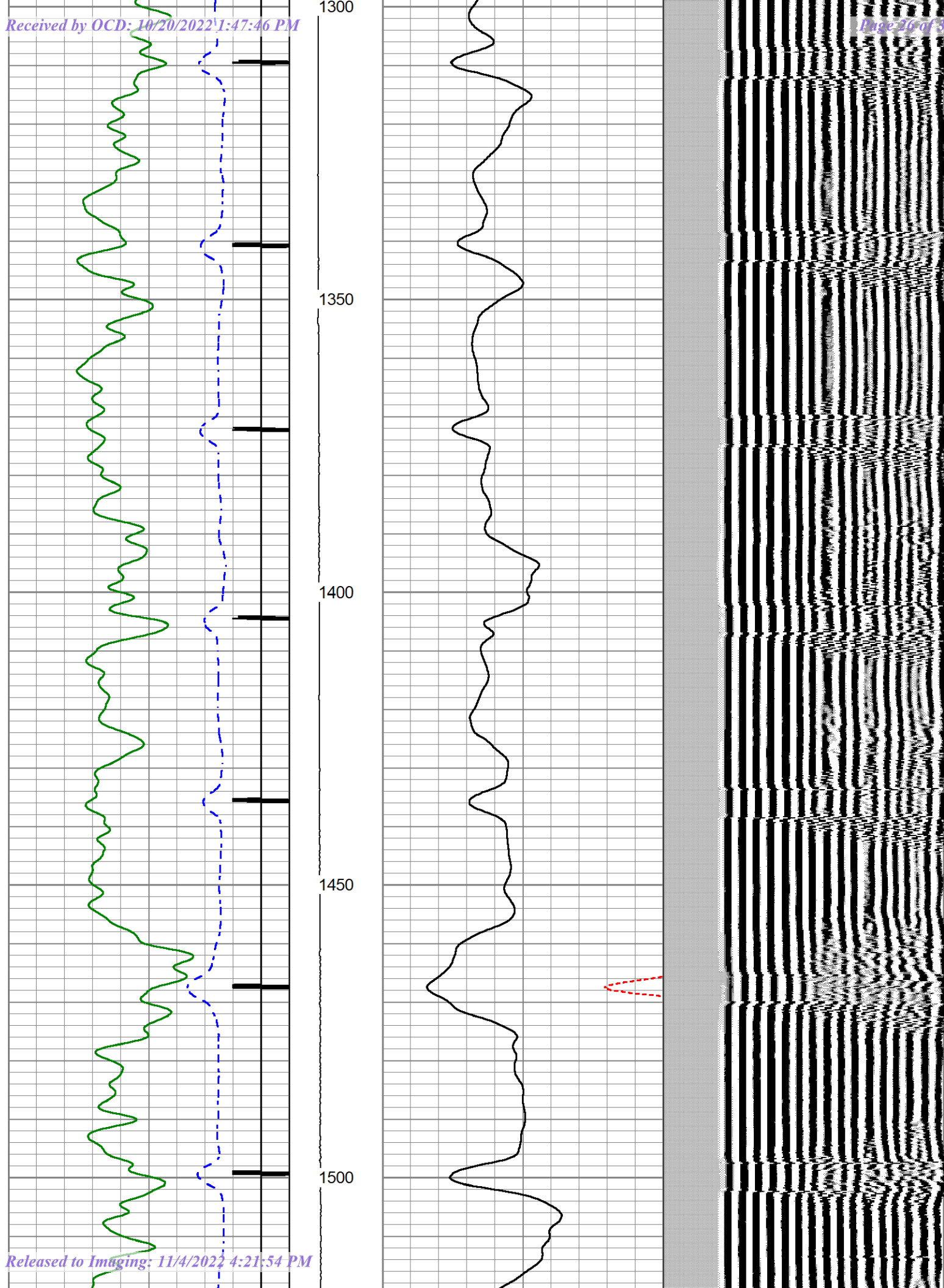


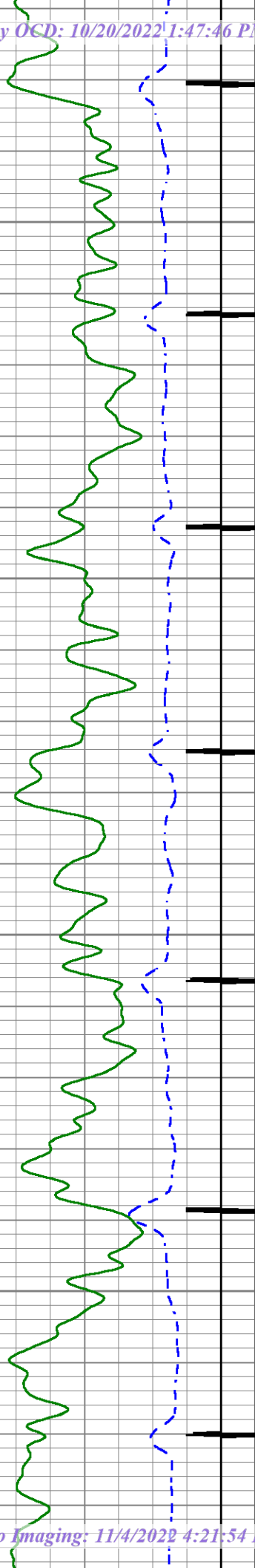










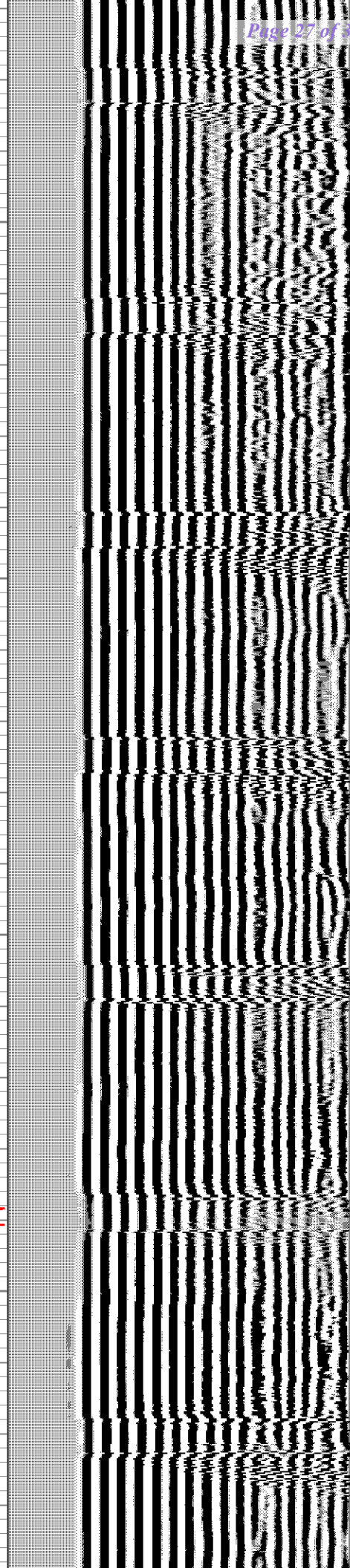
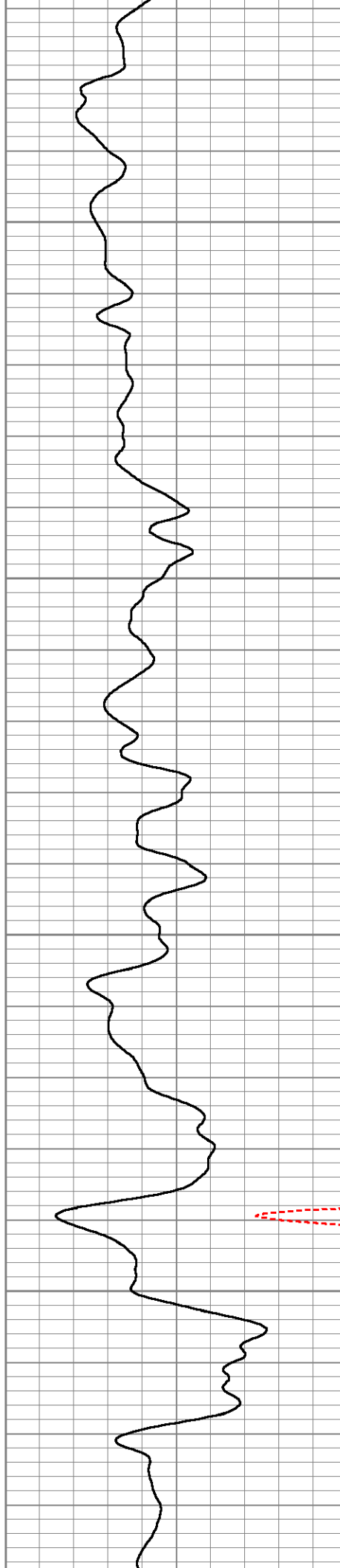


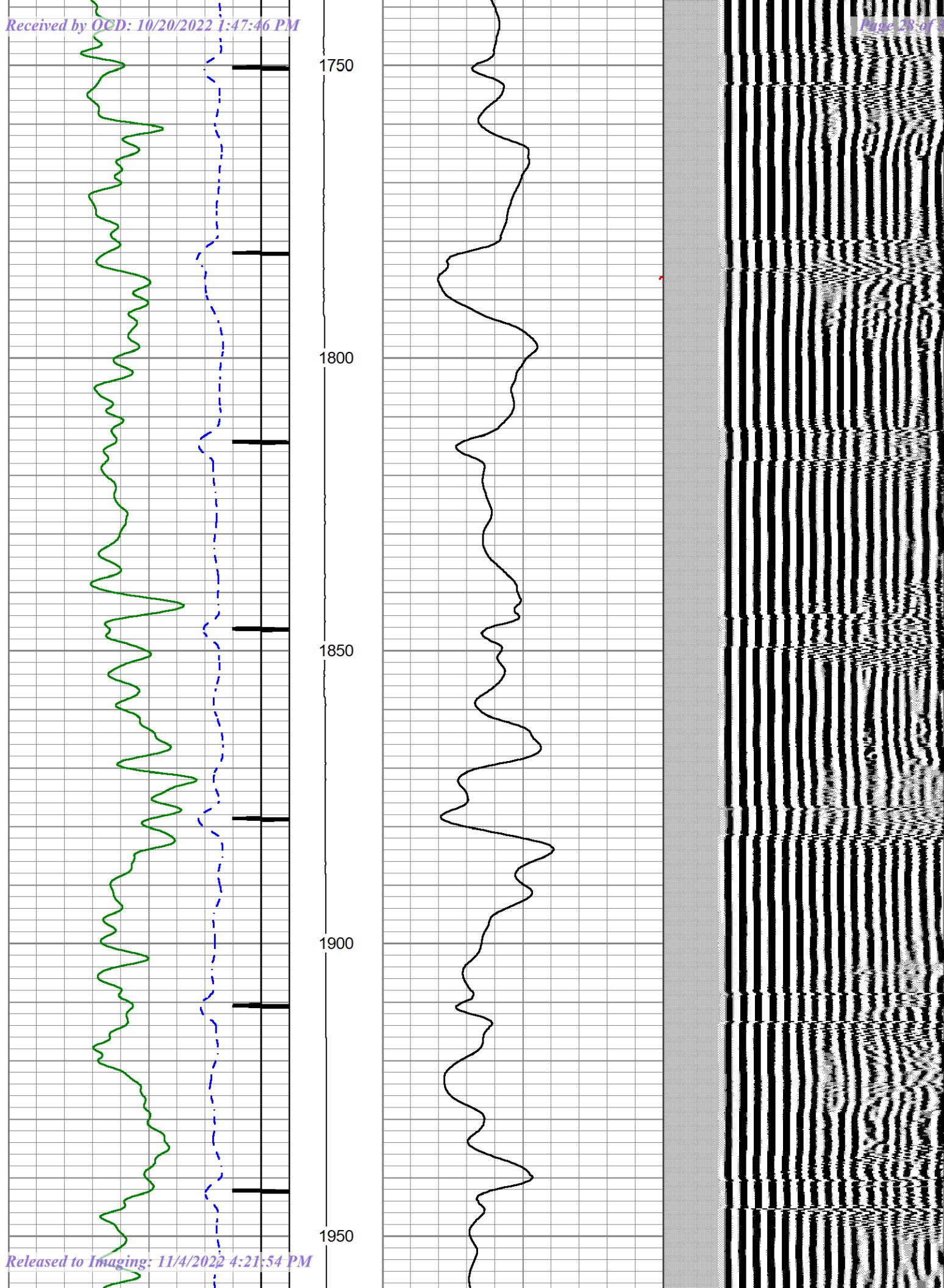
1550

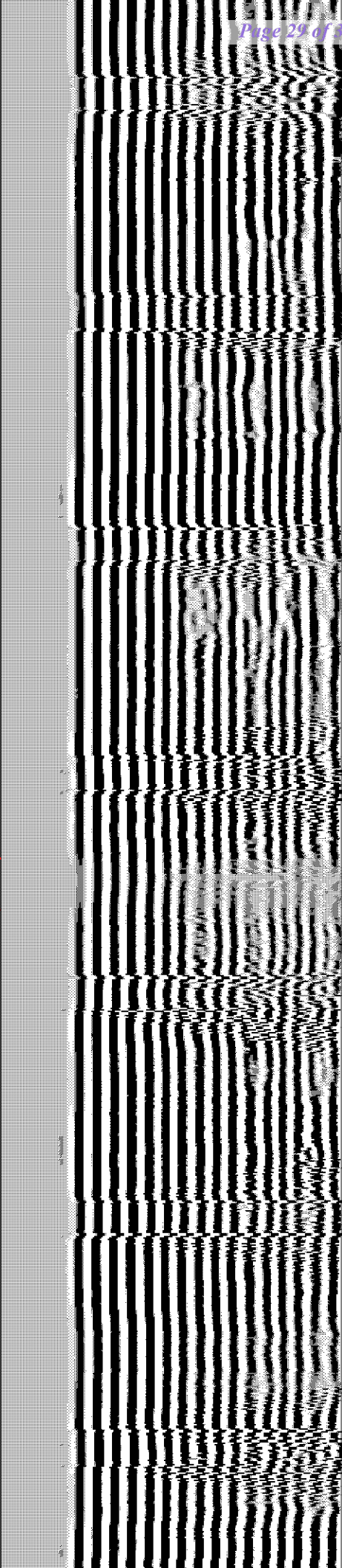
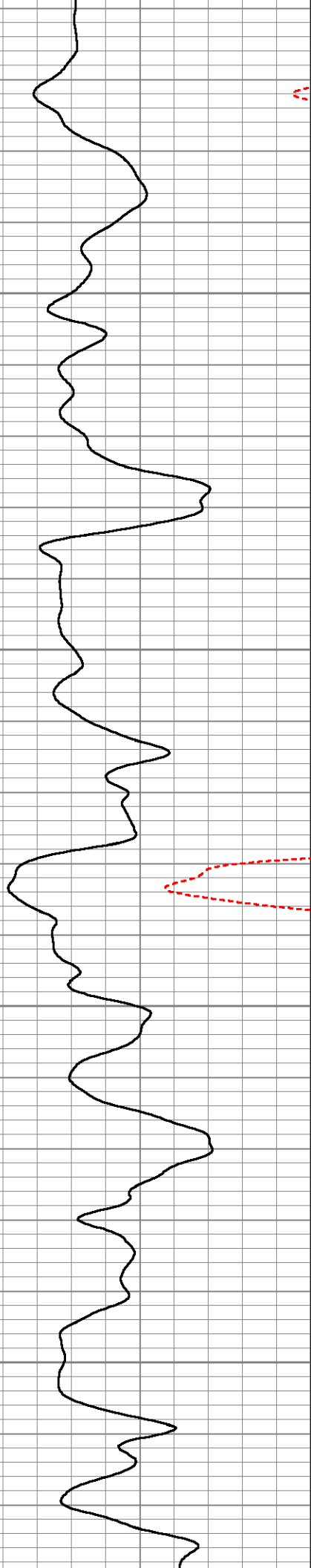
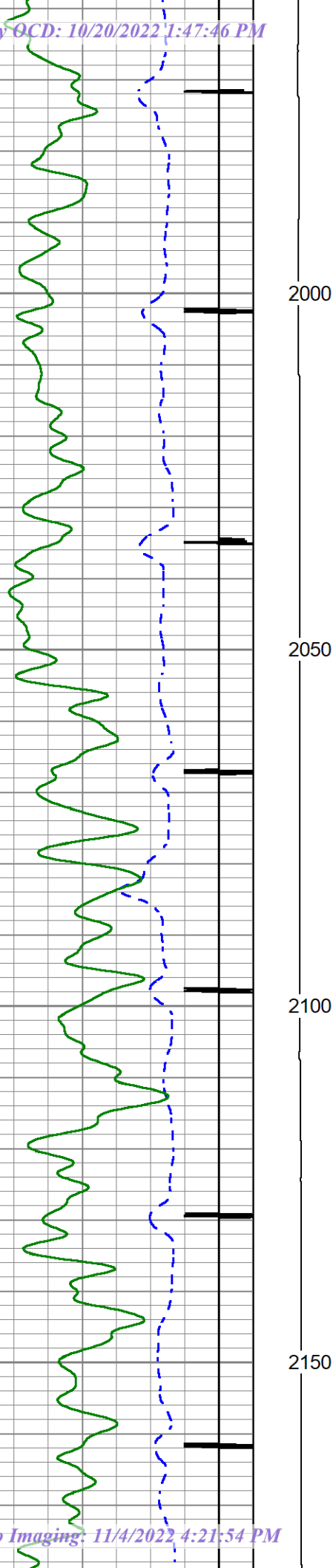
1600

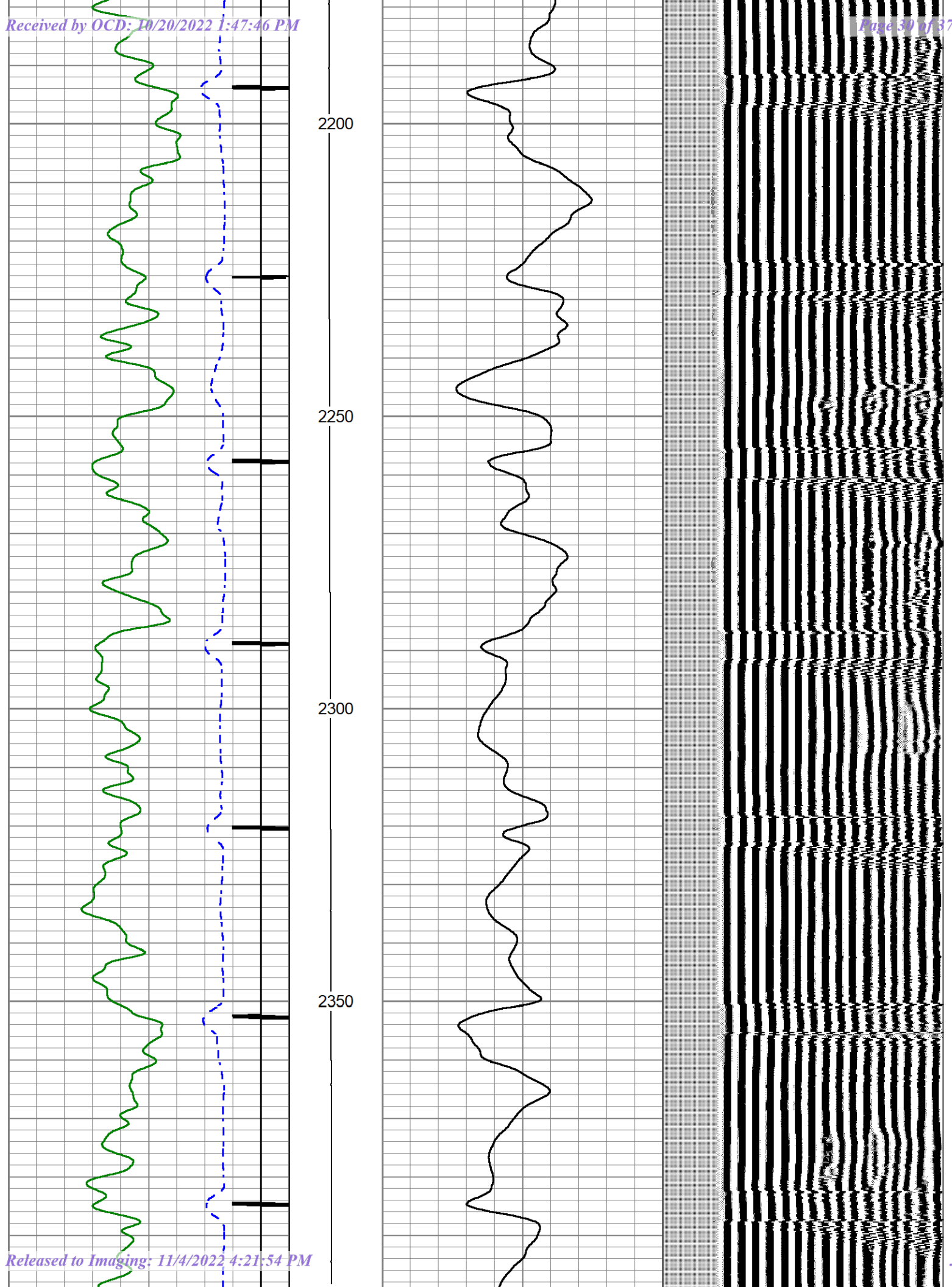
1650

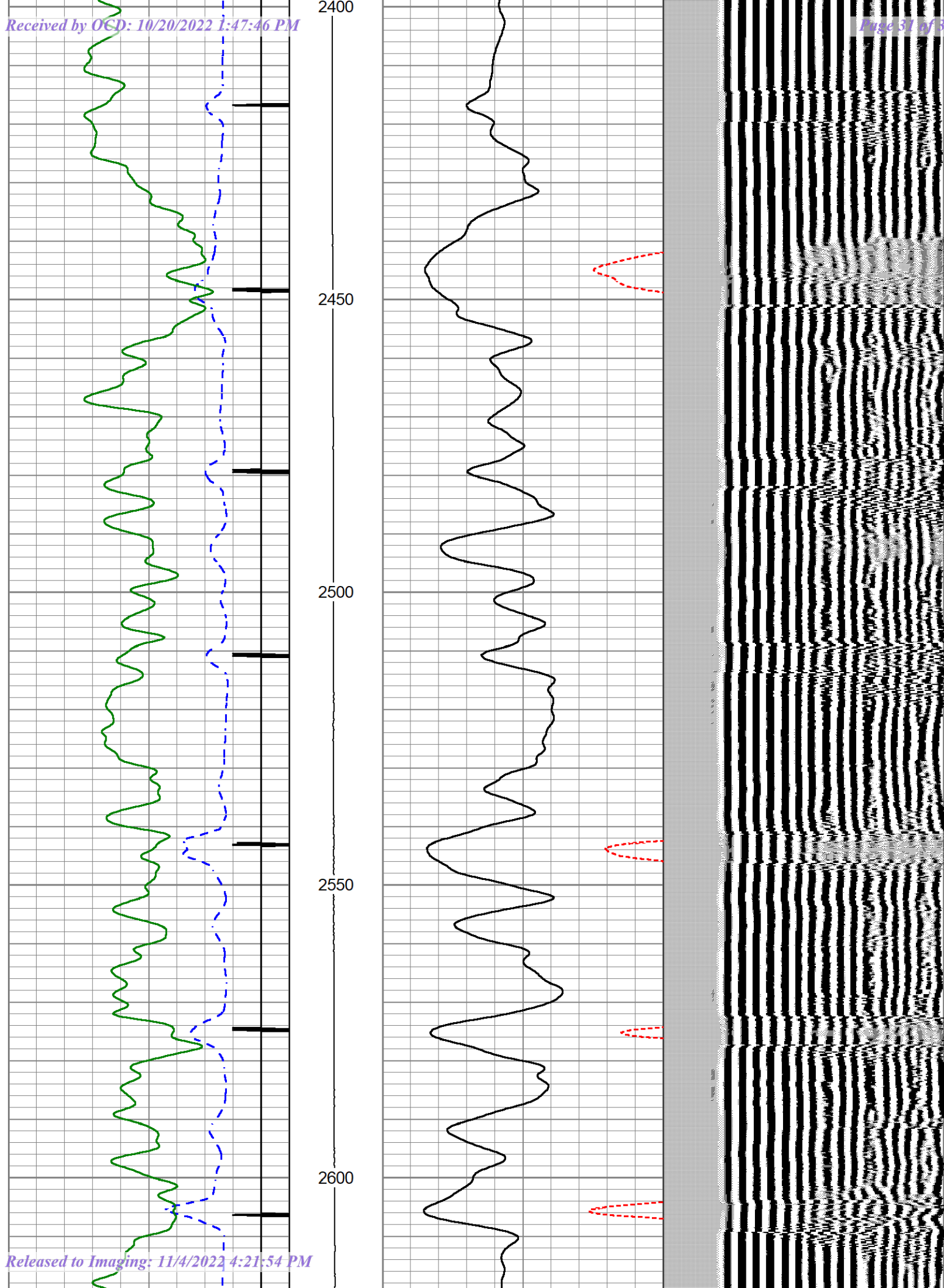
1700

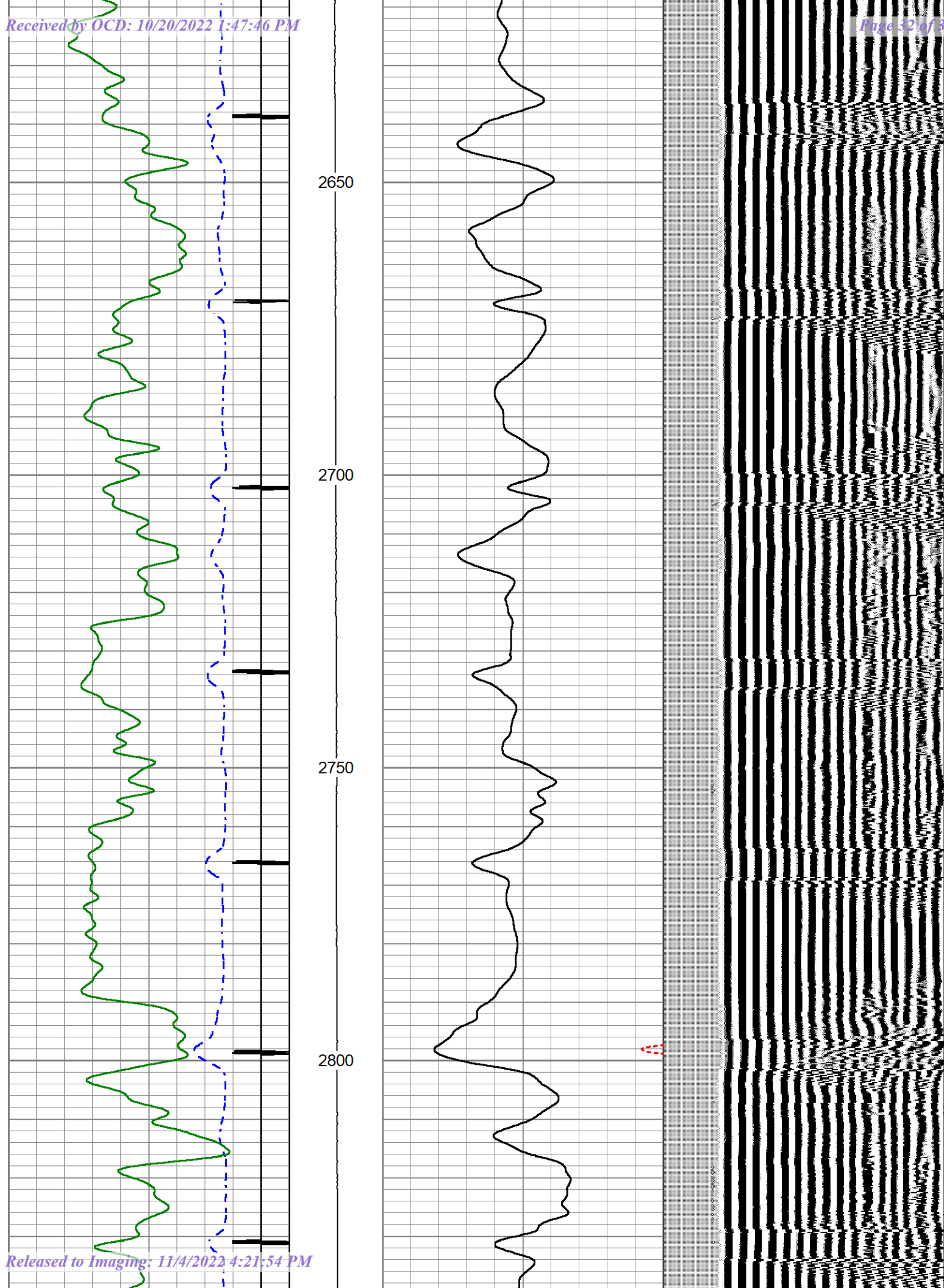


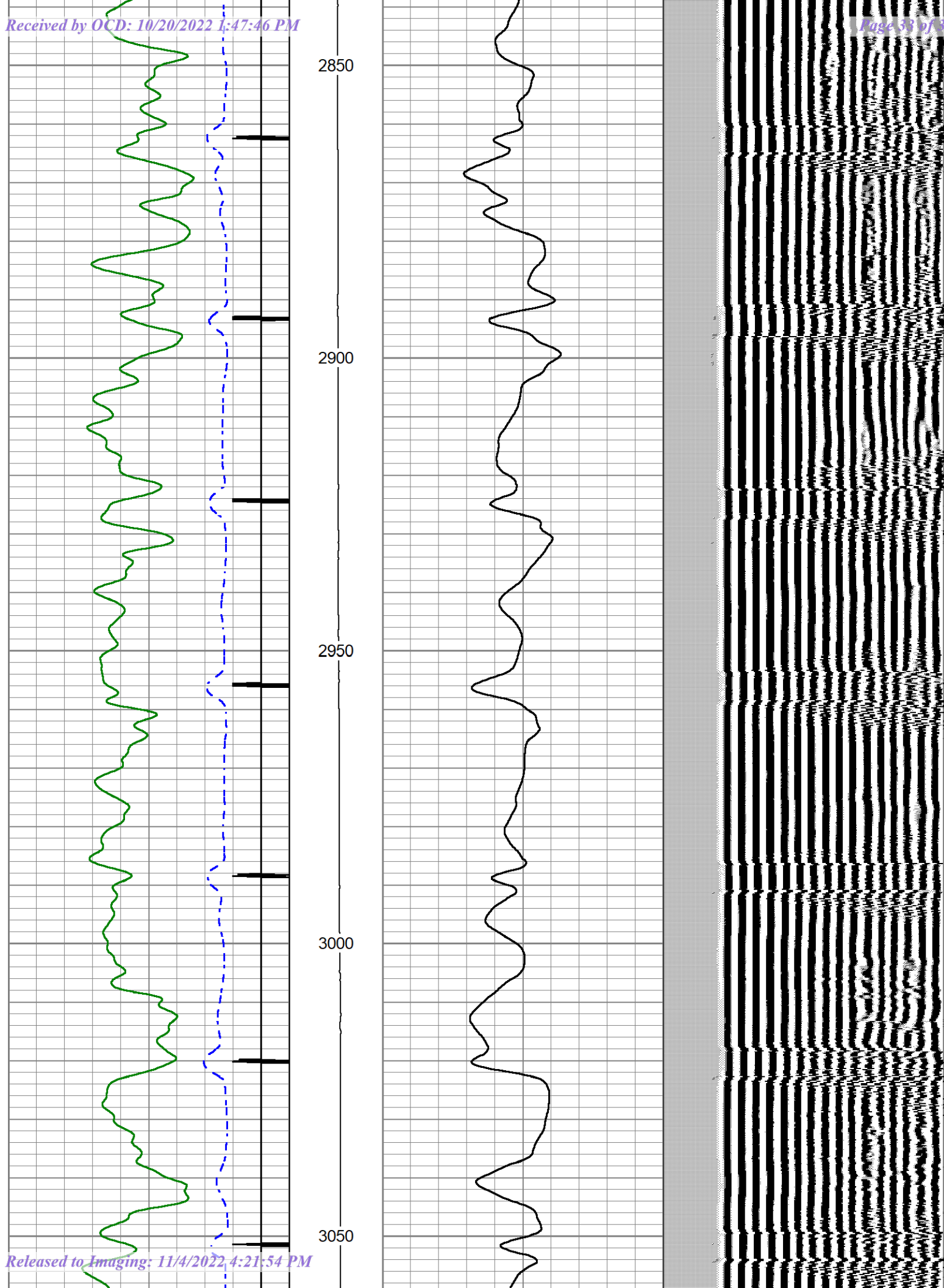


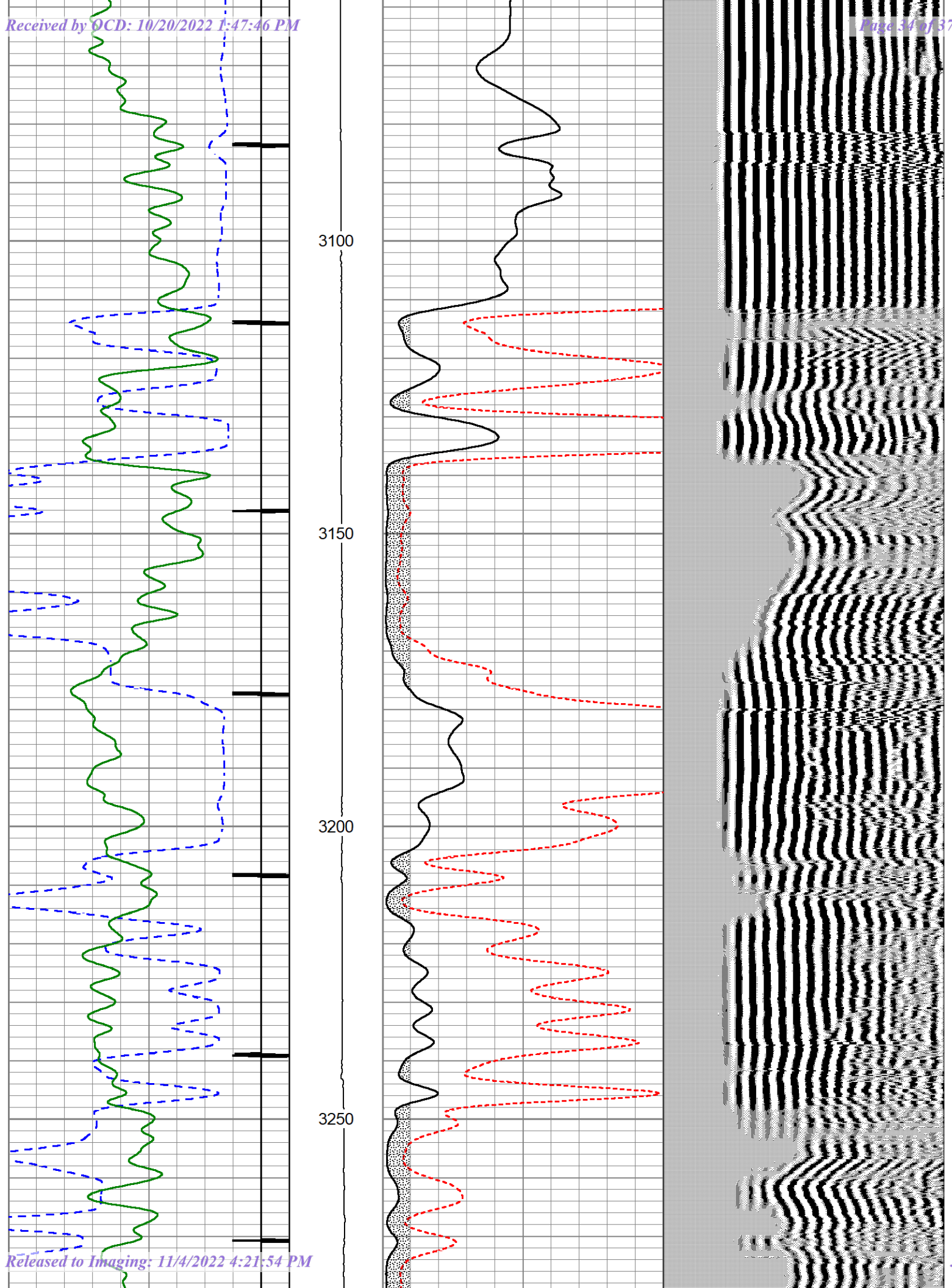


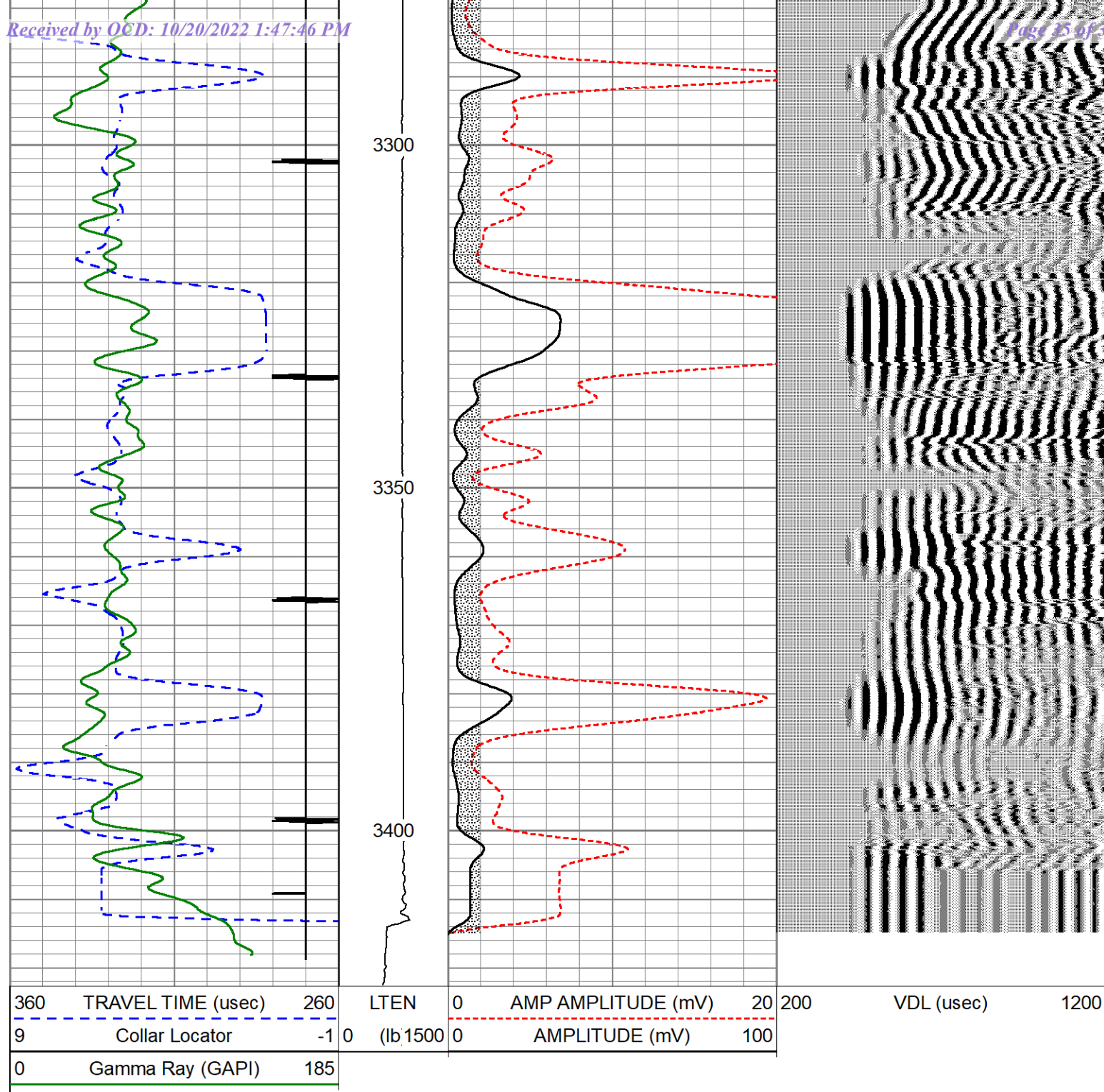












Calibration Report

Database File lindrith unit np#4.db
 Dataset Pathname pass6
 Dataset Creation Tue Sep 20 15:21:30 2022

Gamma Ray Calibration Report

Serial Number: 110774
 Tool Model: Probe275Gr
 Performed: Thu Jun 2 10:38:09 2022

Calibrator Value: 1.0 GAPI

Background Reading: 0.0 cps
 Calibrator Reading: 1.0 cps

Sensitivity: 0.7000 GAPI/cps

Segmented Cement Bond Log Calibration Report

Serial Number: 1308-02
 Tool Model: Probe
 Calibration Casing Diameter: 5.500 in
 Calibration Depth: 1715.475 ft

Master Calibration, performed Tue Sep 20 15:11:05 2022:

	Raw (v)		Calibrated (mv)		Results	
	Zero	Cal	Zero	Cal	Gain	Offset
3'	0.004	0.941	0.000	71.921	76.752	-0.333
CAL	0.003	1.195				
5'	0.006	0.780	0.000	71.921	92.874	-0.548
SUM						
S1	-0.005	0.930	0.000	100.000	106.917	0.527
S2	0.004	0.949	0.000	100.000	105.823	-0.411
S3	0.003	0.919	0.000	100.000	109.221	-0.343
S4	0.004	0.961	0.000	100.000	104.532	-0.409
S5	0.005	1.021	0.000	100.000	98.421	-0.522
S6	0.004	1.064	0.000	100.000	94.319	-0.397
S7	0.004	1.066	0.000	100.000	94.146	-0.389
S8	0.004	1.007	0.000	100.000	99.655	-0.367

Internal Reference Calibration, performed Wed Oct 5 11:57:18 2016:

	Raw (v)		Calibrated (v)		Results	
	Zero	Cal	Zero	Cal	Gain	Offset
CAL	0.000	0.000	0.003	1.195	1.000	0.000

Air Zero Calibration, performed Mon Feb 11 11:45:57 2019:

	Raw (v)		Calibrated (v)		Results	
	Zero		Zero		Offset	
3'	0.000		0.000		0.000	
5'	0.000		0.000		0.000	
SUM						
S1	0.000		0.000		0.000	
S2	0.000		0.000		0.000	
S3	0.000		0.000		0.000	
S4	0.000		0.000		0.000	
S5	0.000		0.000		0.000	
S6	0.000		0.000		0.000	
S7	0.000		0.000		0.000	
S8	0.000		0.000		0.000	

District I
1625 N. French Dr., Hobbs, NM 88240
Phone:(575) 393-6161 Fax:(575) 393-0720
District II
811 S. First St., Artesia, NM 88210
Phone:(575) 748-1283 Fax:(575) 748-9720
District III
1000 Rio Brazos Rd., Aztec, NM 87410
Phone:(505) 334-6178 Fax:(505) 334-6170
District IV
1220 S. St Francis Dr., Santa Fe, NM 87505
Phone:(505) 476-3470 Fax:(505) 476-3462

State of New Mexico
Energy, Minerals and Natural Resources
Oil Conservation Division
1220 S. St Francis Dr.
Santa Fe, NM 87505

CONDITIONS

Action 152391

CONDITIONS

Operator: MorningStar Operating LLC 400 W 7th St Fort Worth, TX 76102	OGRID: 330132
	Action Number: 152391
	Action Type: [C-103] Sub. Plugging (C-103P)

CONDITIONS

Created By	Condition	Condition Date
mkuehling	WELL PLUGGED 9/26/22 WITH SUBSURFACE MARKER	11/4/2022