

Well Name: JICARILLA 126 S	Well Location: T24N / R4W / SEC 2 / NENE /	County or Parish/State: RIO ARRIBA / NM
Well Number: 4	Type of Well: CONVENTIONAL GAS WELL	Allottee or Tribe Name: JICARILLA APACHE
Lease Number: JIC126	Unit or CA Name:	Unit or CA Number:
US Well Number: 300390565200S1	Well Status: Abandoned	Operator: SOUTHLAND ROYALTY COMPANY

Subsequent Report

Sundry ID: 2697983

Type of Submission: Subsequent Report

Type of Action: Plug and Abandonment

Date Sundry Submitted: 10/13/2022

Time Sundry Submitted: 10:14

Date Operation Actually Began: 10/04/2022

**Actual Procedure:** MorningStar Operating has permanently plugged and abandoned the Jicarilla 126S4 as of 10/07/2022. Attached are the Daily and Cementing Reports, Final WBD, and CBL.

SR Attachments

Actual Procedure

PA\_Dailies\_\_Cement\_\_WBD\_\_CBL\_Jicarilla\_126S\_4\_20221013101416.pdf

Well Name: JICARILLA 126 S	Well Location: T24N / R4W / SEC 2 / NENE /	County or Parish/State: RIO ARRIBA / NM
Well Number: 4	Type of Well: CONVENTIONAL GAS WELL	Allottee or Tribe Name: JICARILLA APACHE
Lease Number: JIC126	Unit or CA Name:	Unit or CA Number:
US Well Number: 300390565200S1	Well Status: Abandoned	Operator: SOUTHLAND ROYALTY COMPANY

Operator

I certify that the foregoing is true and correct. Title 18 U.S.C. Section 1001 and Title 43 U.S.C. Section 1212, make it a crime for any person knowingly and willfully to make to any department or agency of the United States any false, fictitious or fraudulent statements or representations as to any matter within its jurisdiction. Electronic submission of Sundry Notices through this system satisfies regulations requiring a

Operator Electronic Signature: CONNIE BLAYLOCK	Signed on: OCT 13, 2022 10:14 AM
Name: SOUTHLAND ROYALTY COMPANY	
Title: Regulatory Technician	
Street Address: 400 W 7th St.	
City: Forth Worth	State: TX
Phone: (817) 334-7882	
Email address: CBLAYLOCK@MSPARTNERS.COM	

Field

Representative Name: Amy Byars		
Street Address:		
City:	State:	Zip:
Phone:		
Email address: abyars@mspartners.com		

BLM Point of Contact

BLM POC Name: KENNETH G RENNICK	BLM POC Title: Petroleum Engineer
BLM POC Phone: 5055647742	BLM POC Email Address: krennick@blm.gov
Disposition: Accepted	Disposition Date: 10/18/2022
Signature: Kenneth Rennick	

## **Morningstar Operating LLC**

### **Plug And Abandonment End Of Well Report**

#### **Jicarilla 126S #004**

1150' FNL & 1120' FEL, Section 2, 24N, 04W

Rio Arriba County, NM / API 30-039-05652

#### **Work Summary:**

- 10/3/22** Made BLM and NMOCD P&A operations notifications at 9:00 AM MST.
- 10/4/22** Arrived at previous location and held safety meeting. Moved equipment to new location. R/U P&A rig. Checked well pressures: Tubing 120 psi, Casing: 250 psi, Bradenhead: 0 psi. Bled down well. N/D wellhead. Waited on hardware. N/U BOP and function tested. Set up equipment for 1-1/4" tubing. Removed tubing hanger and L/D 20 joints of 1-1/4" tubing. Secured and shut in well for the day.
- 10/5/22** Arrived on location and held safety meeting. Checked well pressures: Tubing 60 psi, Casing: 160 psi, Bradenhead: 0 psi. Bled down well. Finished laying down 1-1/4" tubing. 107 total joints and a 4' perforated sub. Changed out equipment for 2-3/8" tubing. Prep and tally 2-3/8 work string. P/U 4.5" casing scraper. TIH to 3400' with casing scraper. TOOH. L/D scraper and P/U 4.5" CR. TIH and set CR at 3400'. R/U cementing services. Successfully circulated hole with 40 bbls, pumped 60 bbls total. Attempted to pressure test casing but was unsuccessful. R/D cementers. TOOH. R/U wireline. RIH and logged well. POOH and R/D wireline. Secured and shut in well for the day.
- 10/6/22** Arrived on location and held safety meeting. Checked well pressures: Tubing 0 psi, Casing: 0 psi, Bradenhead: 0 psi TIH to 3400'. R/U cementing services. Pumped plug #1 from 3400' to approximately 2846' to cover the Pictured Cliffs perforations and the Fruitland, Kirtland, and Ojo Alamo formation tops. R/D cementing services. L/D 17 joints and TOOH. WOC 4 hours. TIH and tagged top

of plug #1 at 2814'. L/D 38 joints and TOOH. R/U wireline. RIH and perforated at 1575'. POOH and R/D wireline. TIH with 4.5" packer and set at 1544'. Successfully established and injection rate through packer and into perforations at 1575'. Attempted to pressure test casing above packer but was unsuccessful. Unset packer and TOOH. L/D packer and P/U 4.5" CR. TIH and set CR at 1550'. R/U cementing services. Pumped cement through CR at 1550' and into perforations at 1575', stung out of CR and pumped cement on top of CR to approximately 1450'. R/D cementing services. L/D 4 joints and TOOH. WOC overnight. Secured and shut in well for the day.

**10/7/22** Arrived on location and held safety meeting. Checked well pressures: Tubing: 0 psi, Casing: 0 psi, Bradenhead: 0 psi. Bled down well. TIH and tagged top of plug #2 at 1355'. TOOH. R/U wireline. RIH and perforated at 191'. POOH. TIH with 4.5" packer and set at 157'. Successfully established injection rate through packer and out Bradenhead valve with 8 bbls, pumped 12 bbls total. Attempted to pressure test casing above packer but was unsuccessful. Unset packer and TOOH. L/D packer and picked up 4.5" CR. TIH and set CR at 157'. R/U cementing services. Pumped cement through CR, into perforations at 191', and out of Bradenhead Valve at surface. Stung out of CR and pumped cement from top of CR at 157' to surface. R/D cementing services, L/D tubing, R/D floor, ND BOP, N/U WH. WOC 4 hours. Performed wellhead cutoff. Cement was 12' low in 4.5" casing and 10' low in 8.6" casing. R/U cementing services and performed top off in both casing strings. Welded marker in place per all regulations. R/D all equipment and MOL.

#### **Plug Summary:**

**Plug #1: (Pictured Cliffs Perforations. Pictured Cliffs, Kirtland, Fruitland and Ojo Alamo Fruitland formation top 3,400'-2,814', 37 Sacks Type III Cement)**

P/U 4.5" casing scraper. TIH to 3400' with casing scraper. TOOH. L/D scraper and P/U 4.5" CR. TIH and set CR at 3400'. R/U cementing services. Successfully circulated hole with 40 bbls, pumped 60 bbls total. Attempted to pressure test casing but was unsuccessful. R/D cementers. TOOH. R/U wireline. RIH and logged well. POOH and R/D wireline. TIH and pumped plug #1 from 3400' to approximately 2846' to cover the Pictured Cliffs perforations and the Fruitland, Kirtland, and Ojo Alamo formation tops. R/D cementing services. L/D 17 joints and TOOH. WOC 4 hours. TIH and tagged top of plug #1 at 2814'

**.Plug #2: (Nacimiento Formation Top 1,575'-1,355', 46 Sacks Type III Cement)**

R/U wireline. RIH and perforated at 1575'. POOH and R/D wireline. TIH with 4.5" packer and set at 1544'. Successfully established and injection rate through packer and into perforations at 1575'. Attempted to pressure test casing above packer but was unsuccessful. Unset packer and TOOH. L/D packer and P/U 4.5" CR. TIH and set CR at 1550'. R/U cementing services. Pumped cement through CR at 1550' and into perforations at 1575', stung out of CR and pumped cement on top of CR to approximately 1450'. R/D cementing services. WOC overnight. TIH and tagged top of plug #2 at 1355'.

**Plug #3: (Surface Casing Shoe, 157' to surface', 71 Sacks Type III Cement [10 sx for top off])**

R/U wireline. RIH and perforated at 191'. POOH. TIH with 4.5" packer and set at 157'. Successfully established injection rate through packer and out Bradenhead valve with 8 bbls, pumped 12 bbls total. Attempted to pressure test casing above packer but was unsuccessful. Unset packer and TOOH. L/D packer and picked up 4.5" CR. TIH and set CR at 157'. R/U cementing services. Pumped cement through CR, into perforations at 191', and out of Bradenhead Valve at surface. Stung out of CR and pumped cement from top of CR at 157' to surface. R/D cementing services. WOC 4 hours. Performed wellhead cutoff. Cement was 12' low in 4.5" casing and 10' low in 8.6" casing. R/U cementing services and performed top off in both casing strings.

## P &amp; A Daily Report



PO Box 538 Farmington, NM 87499 505.327.7301

Company:	Morningstar Operating
Well Name:	Jicarilla 126S #004
API #:	30-039-05652
Date:	10/4/2022

**WORK SUMMARY**

Arrived at previous location and held safety meeting. Moved equipment to new location. R/U P&A rig. Checked well pressures (see pressures below). Bled down well. N/D wellhead. Waited on hardware. N/U BOP and function tested. Set up equipment for 1-1/4" tubing. Removed tubing hanger and L/D 20 joints of 1-1/4" tubing. Secured and shut in well for the day.

**PLUG SUMMARY**

<u>Plug No</u>	<u>Plug Depth</u>	<u>Sacks of Cement Used</u>
Plug 1	To	
Plug 2	To	
Plug 3	To	
Plug 4	To	
Plug 5	To	
Plug 6	To	
Plug 7	To	
Plug 8	To	
Plug 9	To	

**BRIDGE PLUG/CEMENT RETAINER SUMMARY**

<u>Depth Set</u>

**WELL PRESSURES**

Tubing	120 psi
Casing	250 psi
Bradenhead	0 psi

## P &amp; A Daily Report



PO Box 538 Farmington, NM 87499 505.327.7301

Company:	Morningstar Operating
Well Name:	Jicarilla 126S #004
API #:	30-039-05652
Date:	10/5/2022

**WORK SUMMARY**

Arrived on location and held safety meeting. Checked well pressures (see pressures below). Bled down well. Finished laying down 1-1/4" tubing. 107 total joints and a 4' perforated sub. Changed out equipment for 2-3/8" tubing. Prep and tally 2-3/8 work string. P/U 4.5" casing scraper. TIH to 3400' with casing scraper. TOOH. L/D scraper and P/U 4.5" CR. TIH and set CR at 3400'. R/U cementing services. Successfully circulated hole with 40 bbls, pumped 60 bbls total. Attempted to pressure test casing but was unsuccessful. R/D cementers. TOOH. R/U wireline. RIH and logged well. POOH and R/D wireline. Secured and shut in well for the day.

**PLUG SUMMARY**

<u>Plug No</u>	<u>Plug Depth</u>	<u>Sacks of Cement Used</u>
Plug 1	To	
Plug 2	To	
Plug 3	To	
Plug 4	To	
Plug 5	To	
Plug 6	To	
Plug 7	To	
Plug 8	To	
Plug 9	To	

**BRIDGE PLUG/CEMENT RETAINER SUMMARY**

<u>Depth Set</u>
3400'

**WELL PRESSURES**

Tubing	60 psi
Casing	160 psi
Bradenhead	0 psi

## P &amp; A Daily Report

**Drake**

WELL SERVICE INC.



PO Box 538 Farmington, NM 87499 505.327.7301

Company:	Morningstar Operating
Well Name:	Jicarilla 126S #004
API #:	30-039-05652
Date:	10/6/2022

**WORK SUMMARY**

Arrived on location and held safety meeting. Checked well pressures (see pressures below). Bled down well. TIH to 3400'. R/U cementing services. Pumped plug #1 from 3400' to approximately 2846' to cover the Pictured Cliffs perforations and the Fruitland, Kirtland, and Ojo Alamo formation tops. R/D cementing services. L/D 17 joints and TOO. WOC 4 hours. TIH and tagged top of plug #1 at 2814'. L/D 38 joints and TOO. R/U wireline. RIH and perforated at 1575'. POOH and R/D wireline. TIH with 4.5" packer and set at 1544'. Successfully established and injection rate through packer and into perforations at 1575'. Attempted to pressure test casing above packer but was unsuccessful. Unset packer and TOO. L/D packer and P/U 4.5" CR. TIH and set CR at 1550'. R/U cementing services. Pumped cement through CR at 1550' and into perforations at 1575', stung out of CR and pumped cement on top of CR to approximately 1450'. R/D cementing services. L/D 4 joints and TOO. WOC overnight. Secured and shut in well for the day.

**PLUG SUMMARY**

Plug No	Plug Depth	Sacks of Cement Used
Plug 1 3400'	To 2814'	37 sx Type III Cement
Plug 2 1575'	To 1450'	46 sx Type III Cement (39 sx inside, 7 outside)
Plug 3	To	
Plug 4	To	
Plug 5	To	
Plug 6	To	
Plug 7	To	
Plug 8	To	
Plug 9	To	

**BRIDGE PLUG/CEMENT RETAINER SUMMARY**

Depth Set
3400'
1550'

**WELL PRESSURES**

Tubing	0 psi
Casing	0 psi
Bradenhead	0 psi



## P &amp; A Daily Report



PO Box 538 Farmington, NM 87499 505.327.7301

Company:	Morningstar Operating
Well Name:	Jicarilla 126S #004
API #:	30-039-05652
Date:	10/7/2022

**WORK SUMMARY**

Arrived on location and held safety meeting. Checked well pressures (see pressures below). Bled down well. TIH and tagged top of plug #2 at 1355'. TOOH. R/U wireline. RIH and perforated at 191'. POOH. TIH with 4.5" packer and set at 157'. Successfully established injection rate through packer and out Bradenhead valve with 8 bbls, pumped 12 bbls total. Attempted to pressure test casing above packer but was unsuccessful. Unset packer and TOOH. L/D packer and picked up 4.5" CR. TIH and sec CR at 157'. R/U cementing services. Pumped cement through CR, into perforations at 191', and out of Bradenhead Valve at surface. Stung out of CR and pumped cement from top of CR at 157' to surface. R/D cementing services, L/D tubing, R/D floor, ND BOP, N/U WH. WOC 4 hours. Preformed wellhead cutoff. Cement was 12' low in 4.5" casing and 10' low in 8.6" casing. R/U cementing services and performed top off in both casing strings. Welded marker in place per all regulations. R/D all equipment and MOL.

Secured and shut in well for the day.

**PLUG SUMMARY**

<u>Plug No</u>	<u>Plug Depth</u>	<u>Sacks of Cement Used</u>
Plug 1 3400'	To 2814'	37 sx Type III Cement
Plug 2 1575'	To 1355'	46 sx Type III Cement
Plug 3 157'	To surface	71 sx Type III Cement (10 for top off)
Plug 4	To	
Plug 5	To	
Plug 6	To	
Plug 7	To	
Plug 8	To	
Plug 9	To	

## BRIDGE PLUG/CEMENT RETAINER SUMMARY

<u>Depth Set</u>
3400'
1550'

## WELL PRESSURES

Tubing	0 psi
Casing	0 psi
Bradenhead	0 psi

# MorningStar Operating, LLC

## P&A WBD

Jicarilla 126 S 4  
Rio Arriba County, NM

All depths include KB  
TD – 3,583'

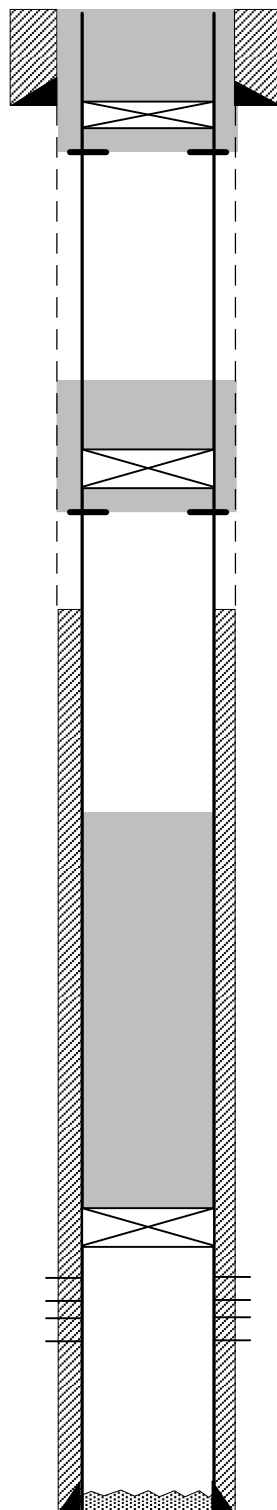
Surface Csg: 4 jts 7-5/8" 24# 8rd  
Setting Depth: 141'

Cement  
125 sx Cement  
Cmt circulated

Production Hole: 6-3/4"  
Production Csg: 162 jts 4-1/2" 9.5# 8rd  
Setting Depth: 3,583'

Cement:  
150 sx cement

Picture Cliffs Perfs (1957):  
3,440'–3,478',  
3,488'–3,520'



**PLUG 3**  
Perf 4-1/2" casing at 191'  
CICR set @ 157'  
Circulate 71 sx cmt 0' - 191'

**PLUG 2 (Nacimiento)**  
Perf 4-1/2" casing at 1,575'  
CICR set @ 1550'  
46 sx cement 1,355' – 1,575'

**PLUG 1 (Ojo Alamo, Kirtland, PC)**  
37 sx cement 2,814' – 3,400'

CICR set @ 3,400'

PBD: 3,580'

Prepared by: JRyza  
Updated by: JRyza  
Date: 10/11/2022

KB = 10'  
GL = 7,213'  
API# 30-039-05652

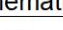
Spud Date: 01/24/1957  
Date Completed: 02/12/1957

Nacimiento – 1,525'  
Ojo Alamo – 2,946'  
Kirtland – 3,138'  
Fruitland – 3,265'  
Picture Cliffs – 3,428'

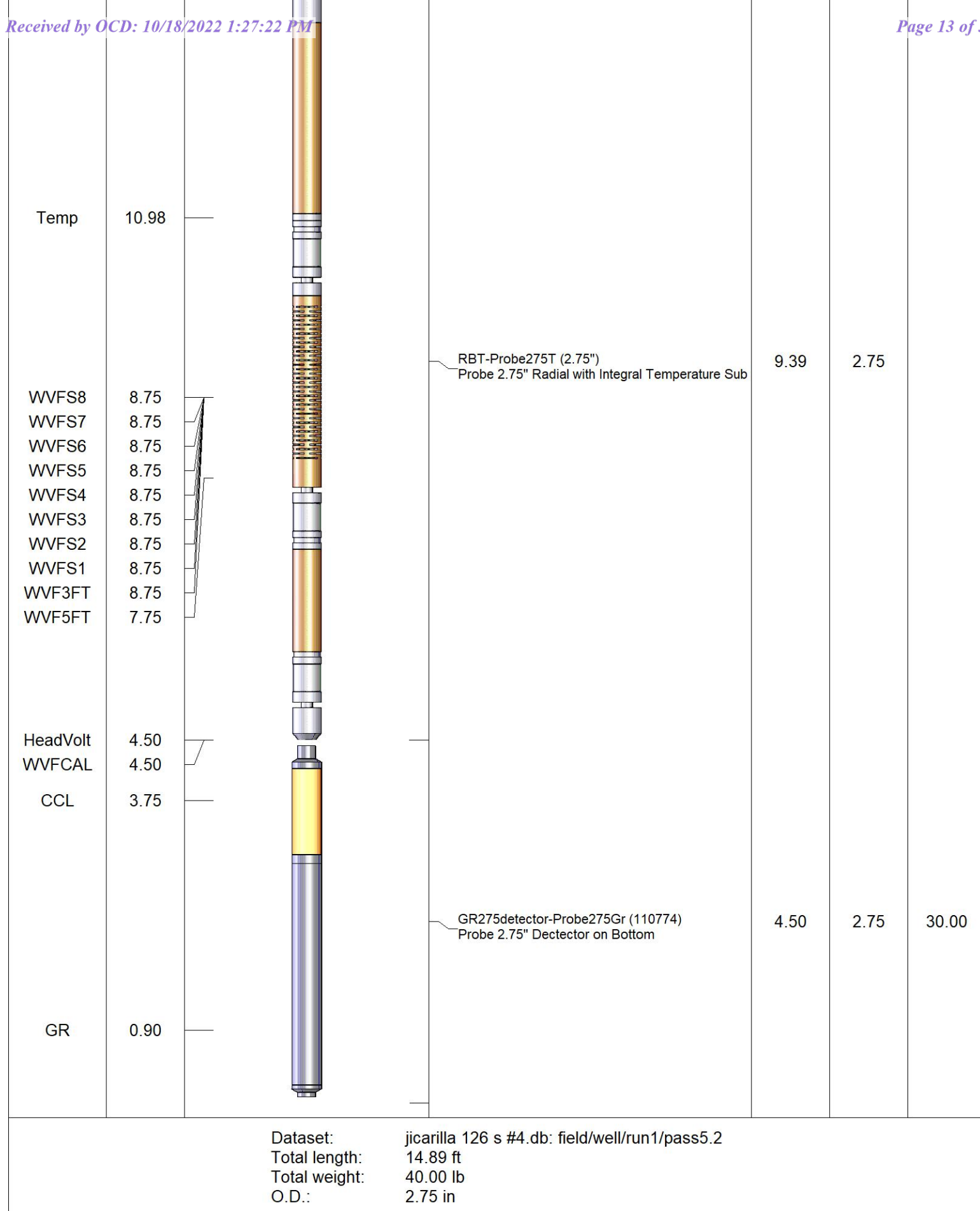
## PERFORMING - WIRELINE SERVICES

<<< Fold Here >>>

Comments

Sensor	Offset (ft)	Schematic	Description	Length (ft)	O.D. (in)	Weight (lb)
			CHD-STNDRD Standard Cable Head	1.00	1.69	10.00

*Released to Imaging: 11/7/2022 3:50:11 PM*



Database File jicarilla 126 s #4.db

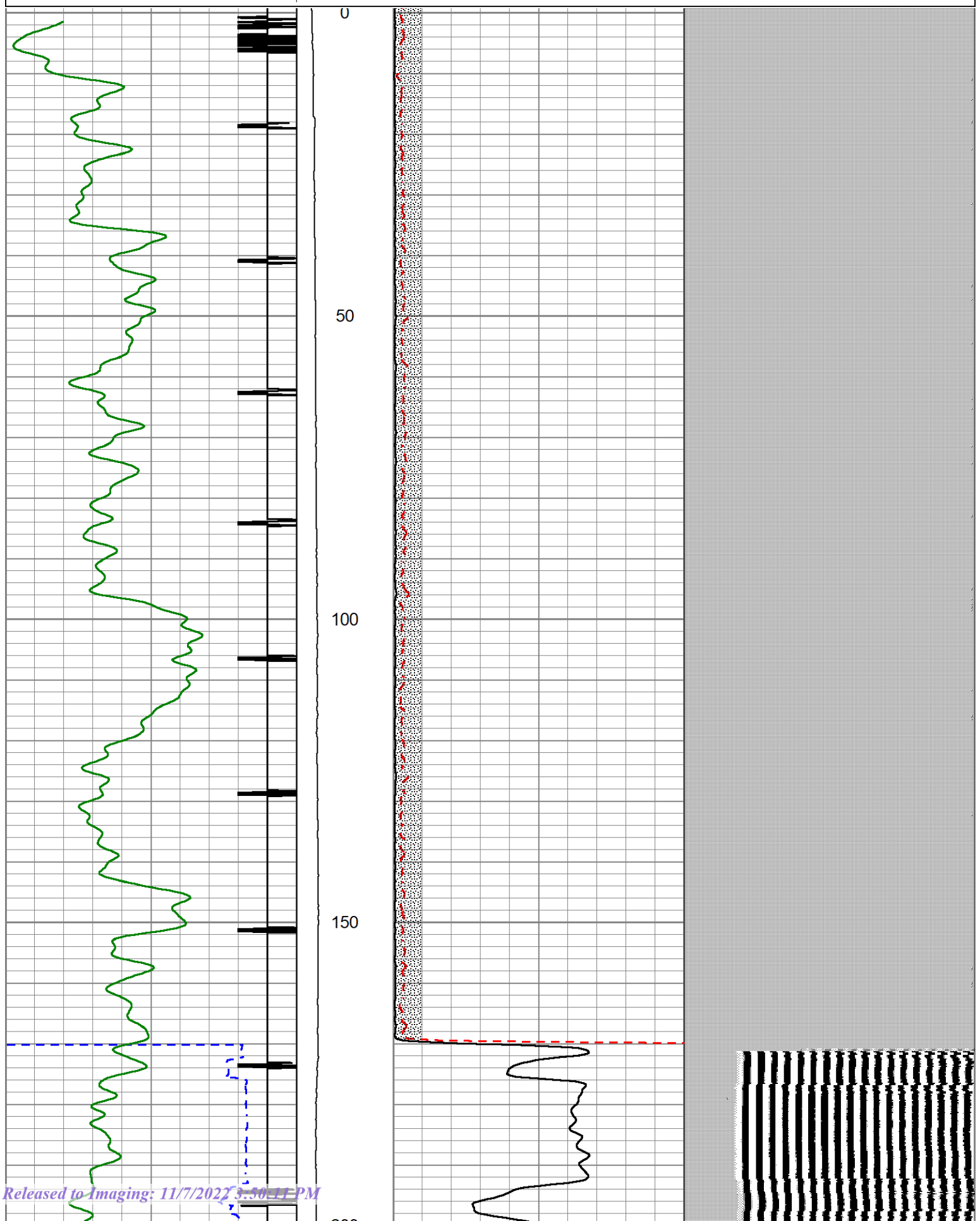
Dataset Pathname pass5.2

Presentation Format chl\_drs

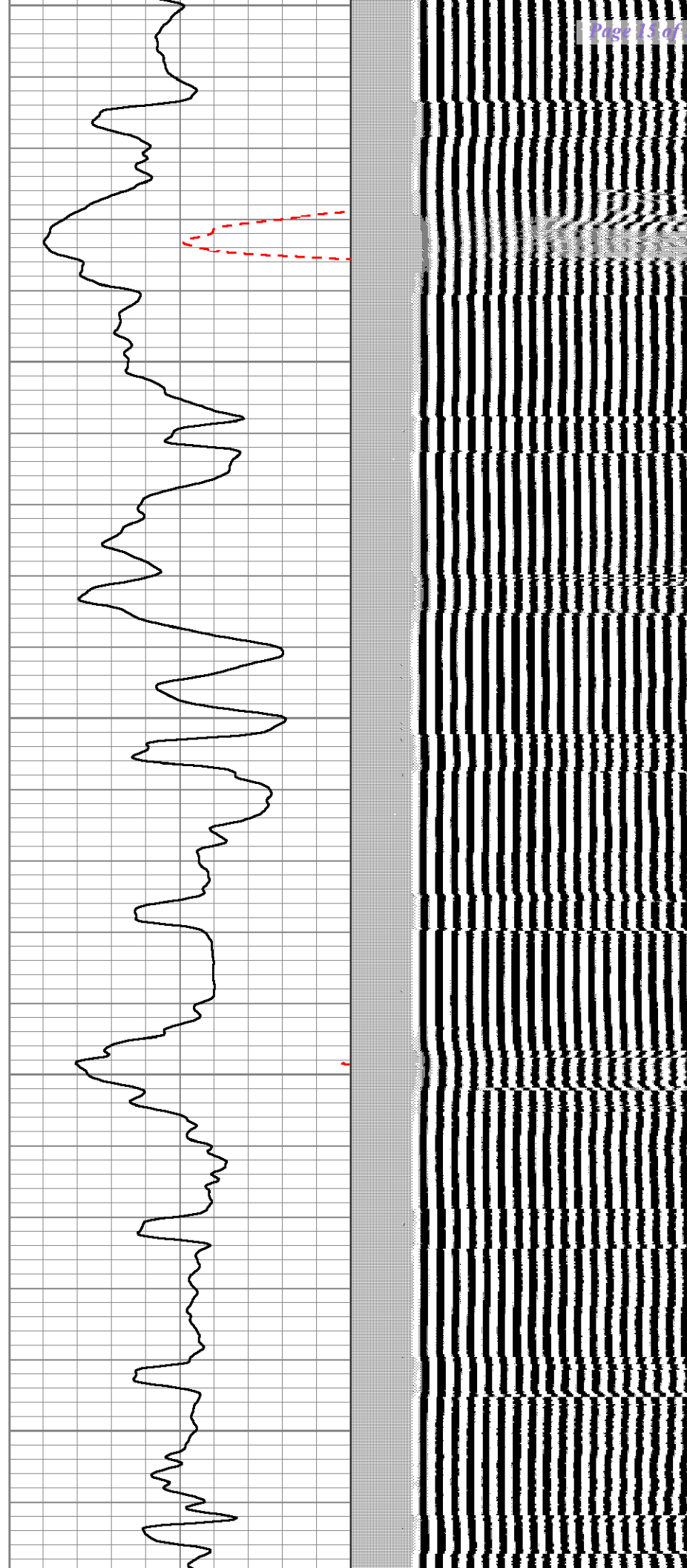
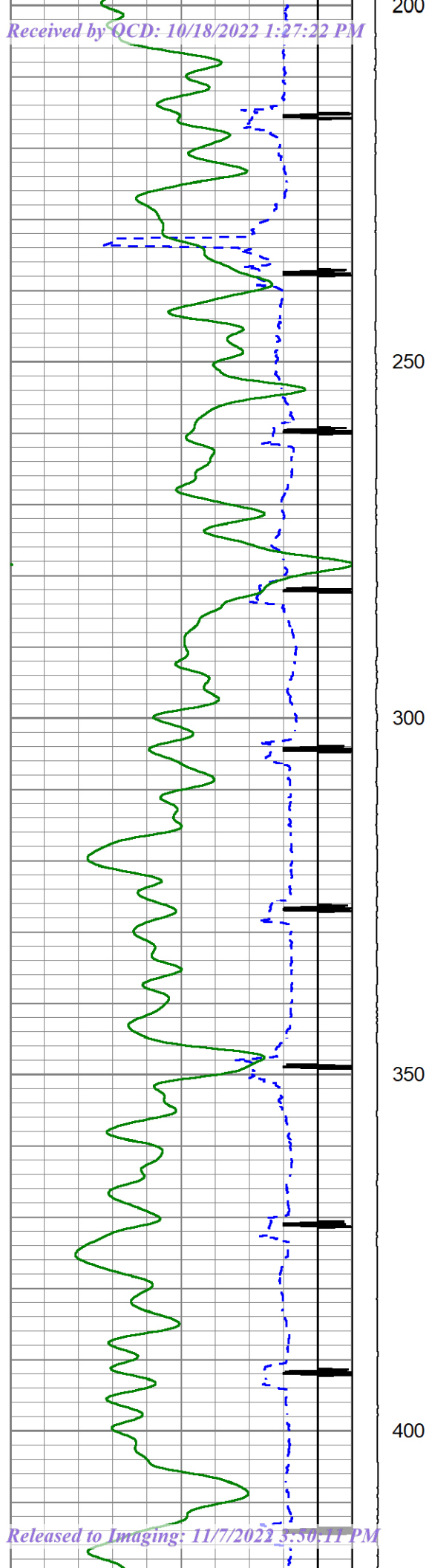
Dataset Creation Wed Oct 05 17:44:14 2022

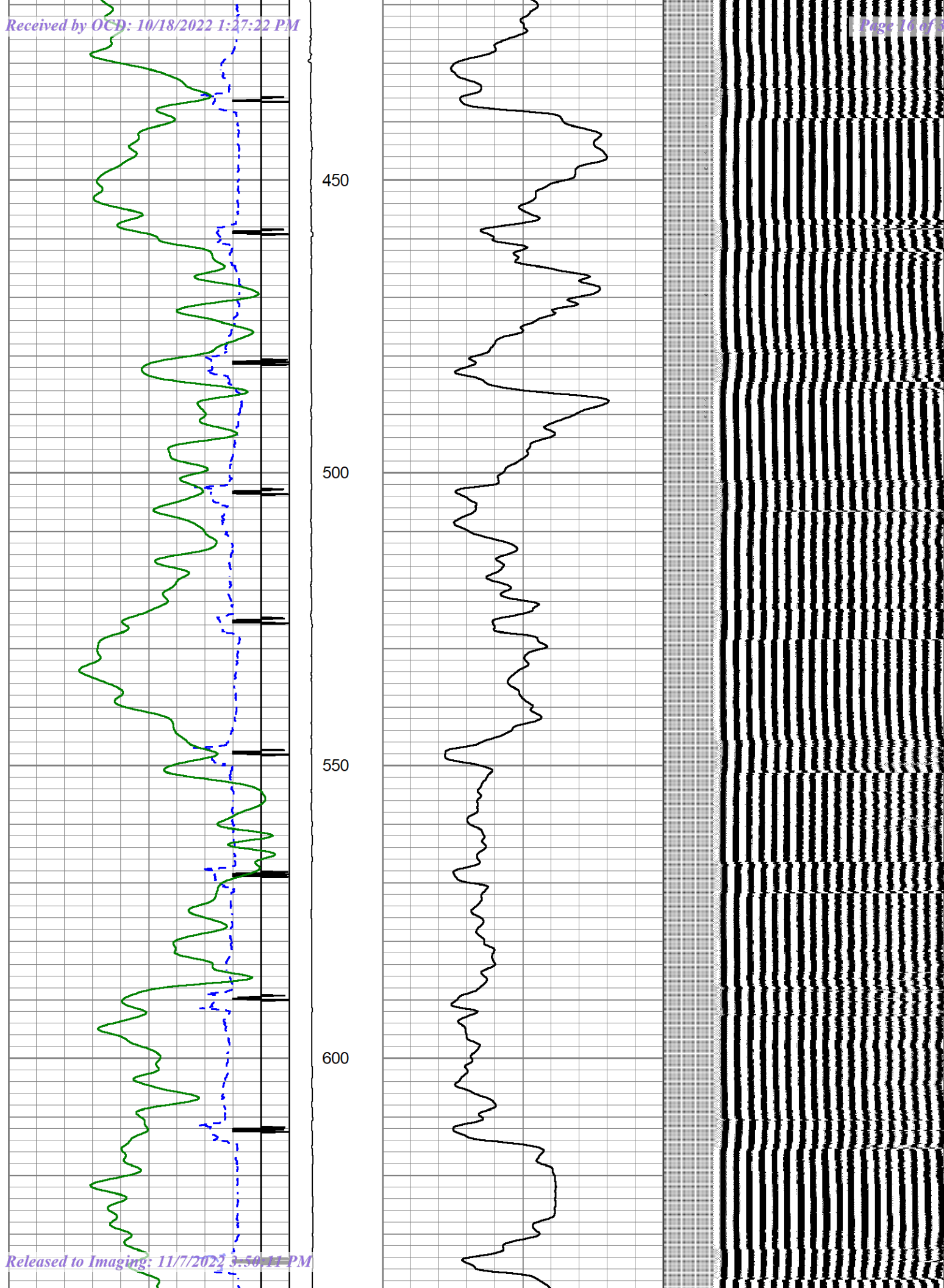
Charted by Depth in Feet scaled 1:240

350	TRAVEL TIME (usec)	250	LTEN	0	AMP AMPLITUDE (mV)	20	200	VDL (usec)	1200
9	Collar Locator	-1	0	(lb2000	0	AMPLITUDE (mV)	100		
0	Gamma Ray (GAPI)	200							

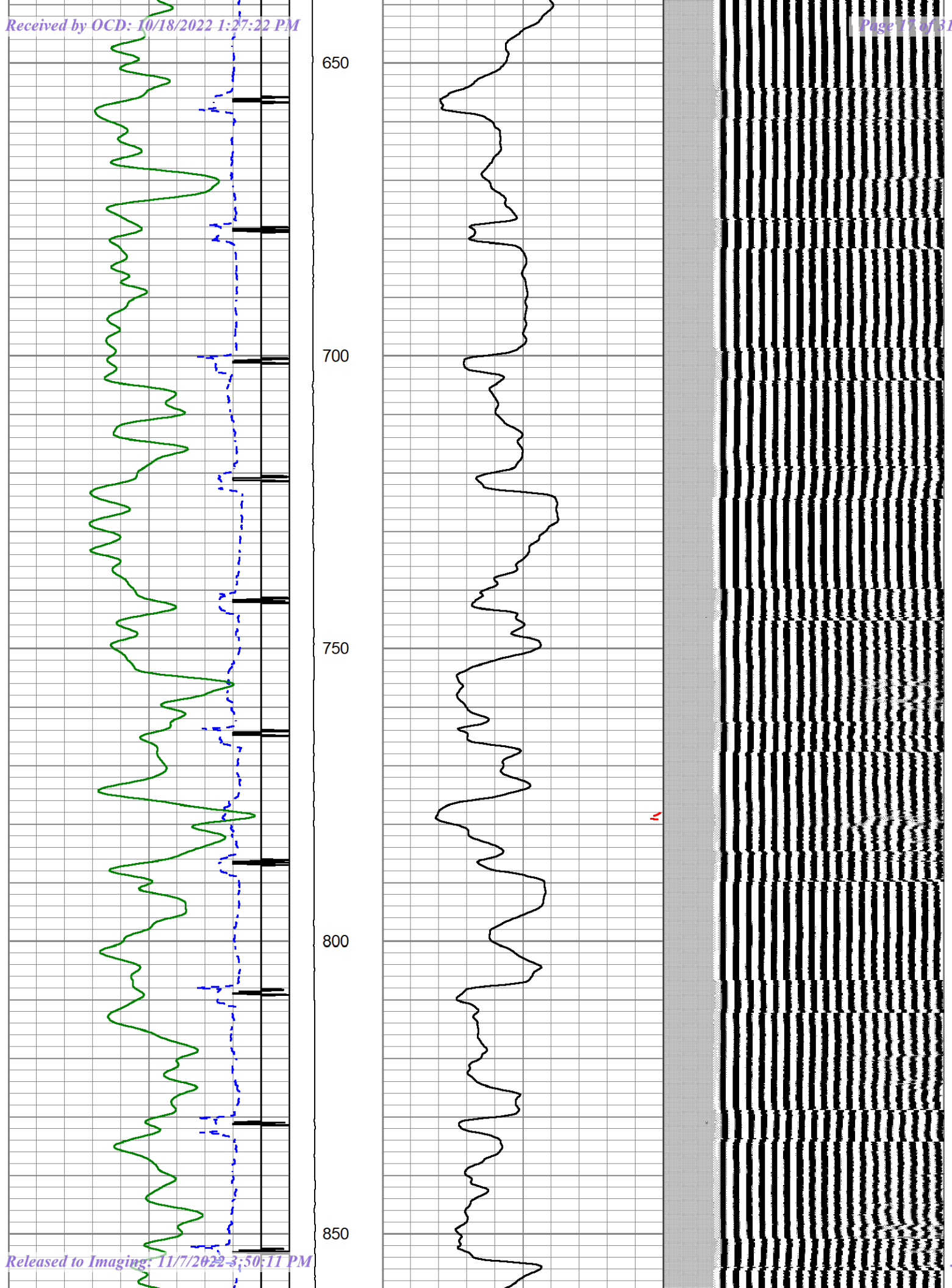


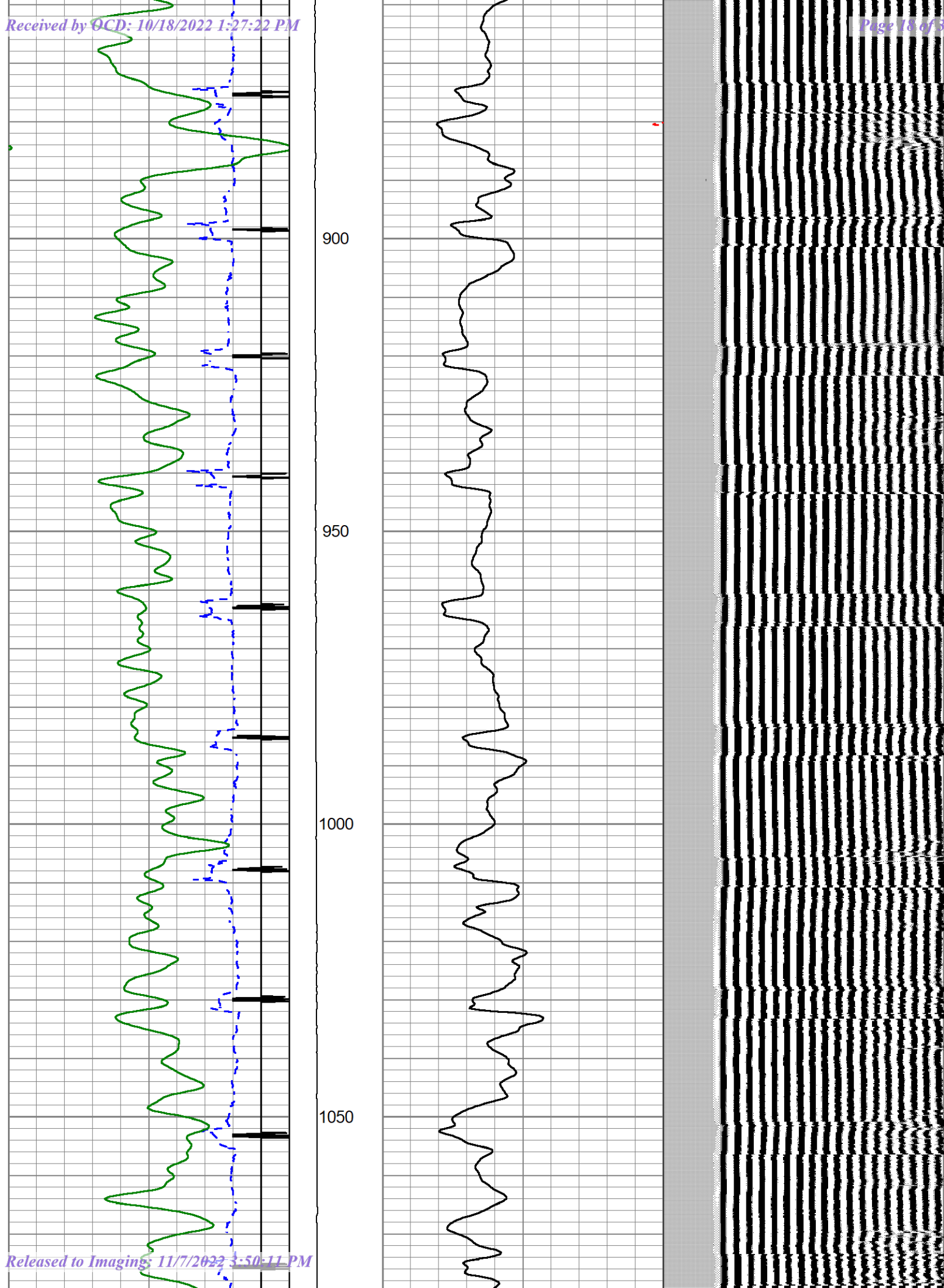


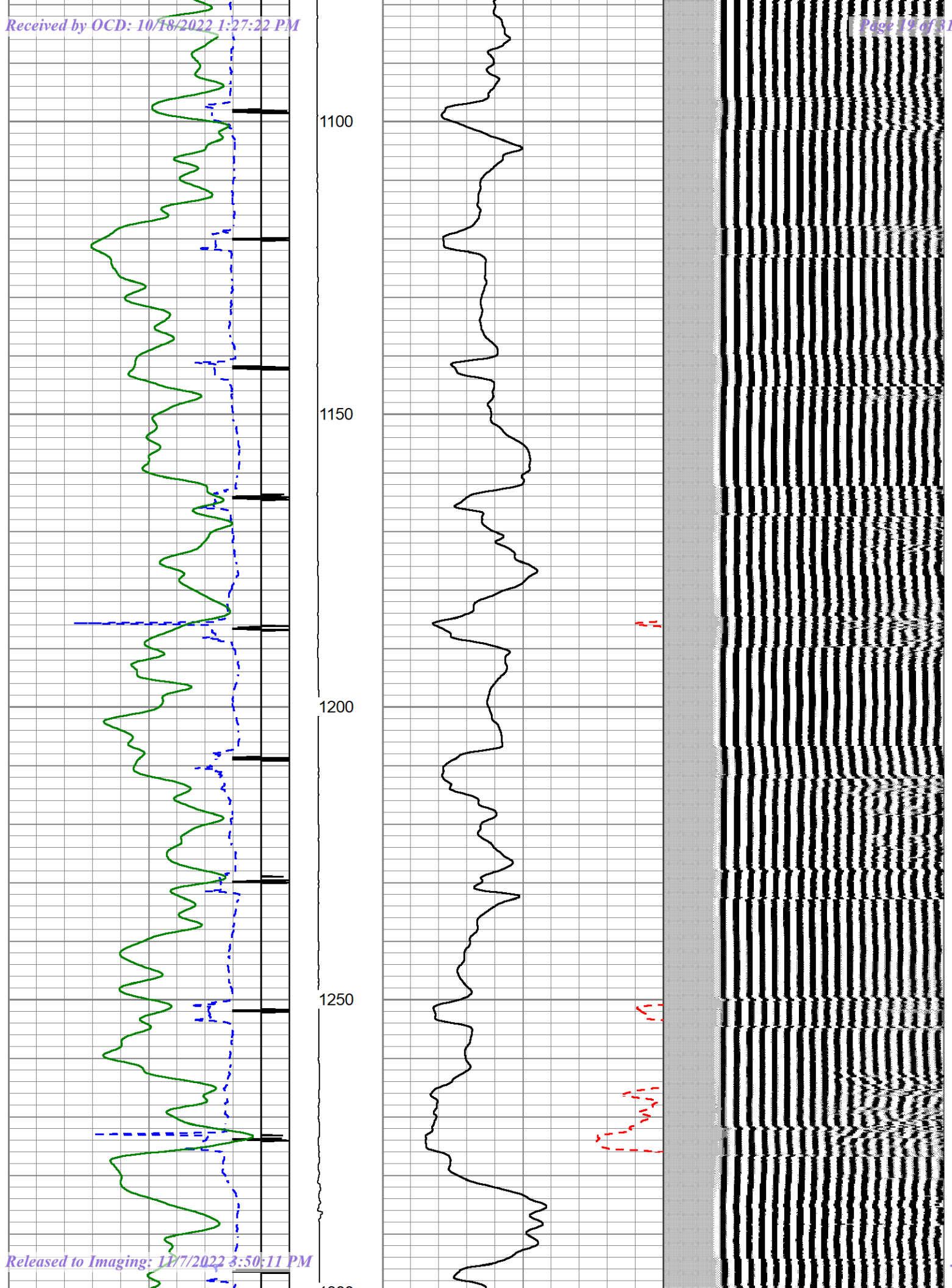


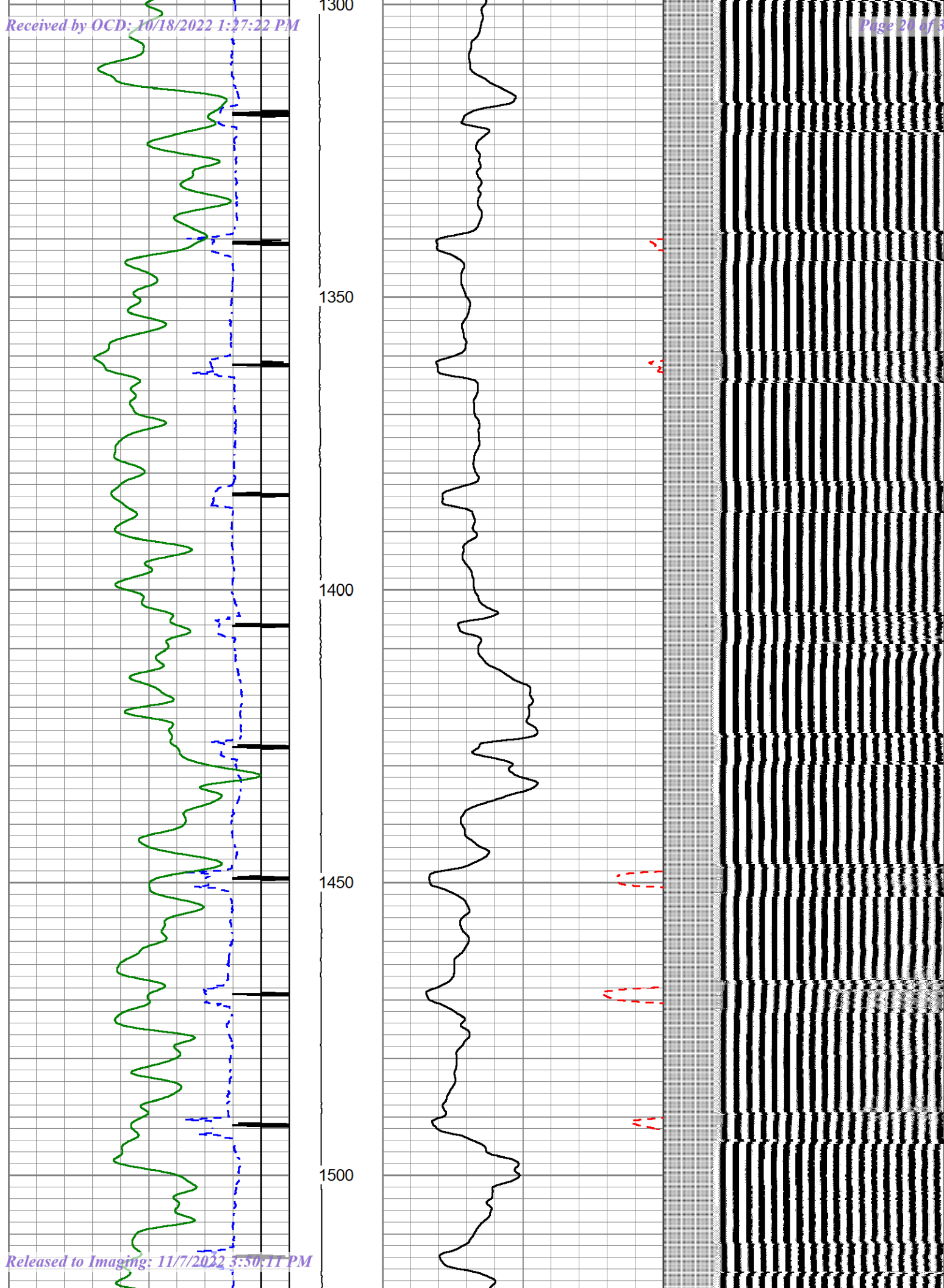




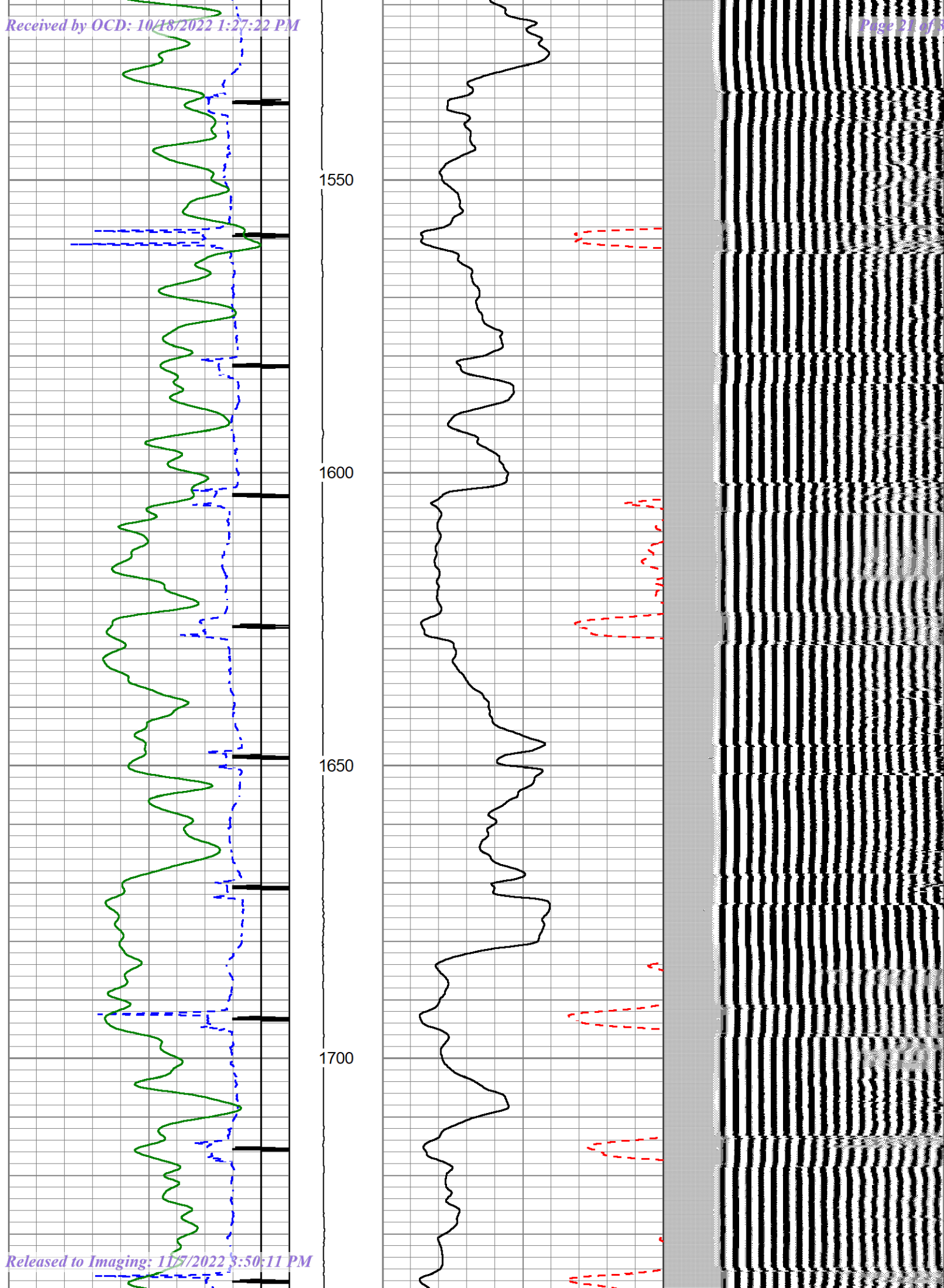


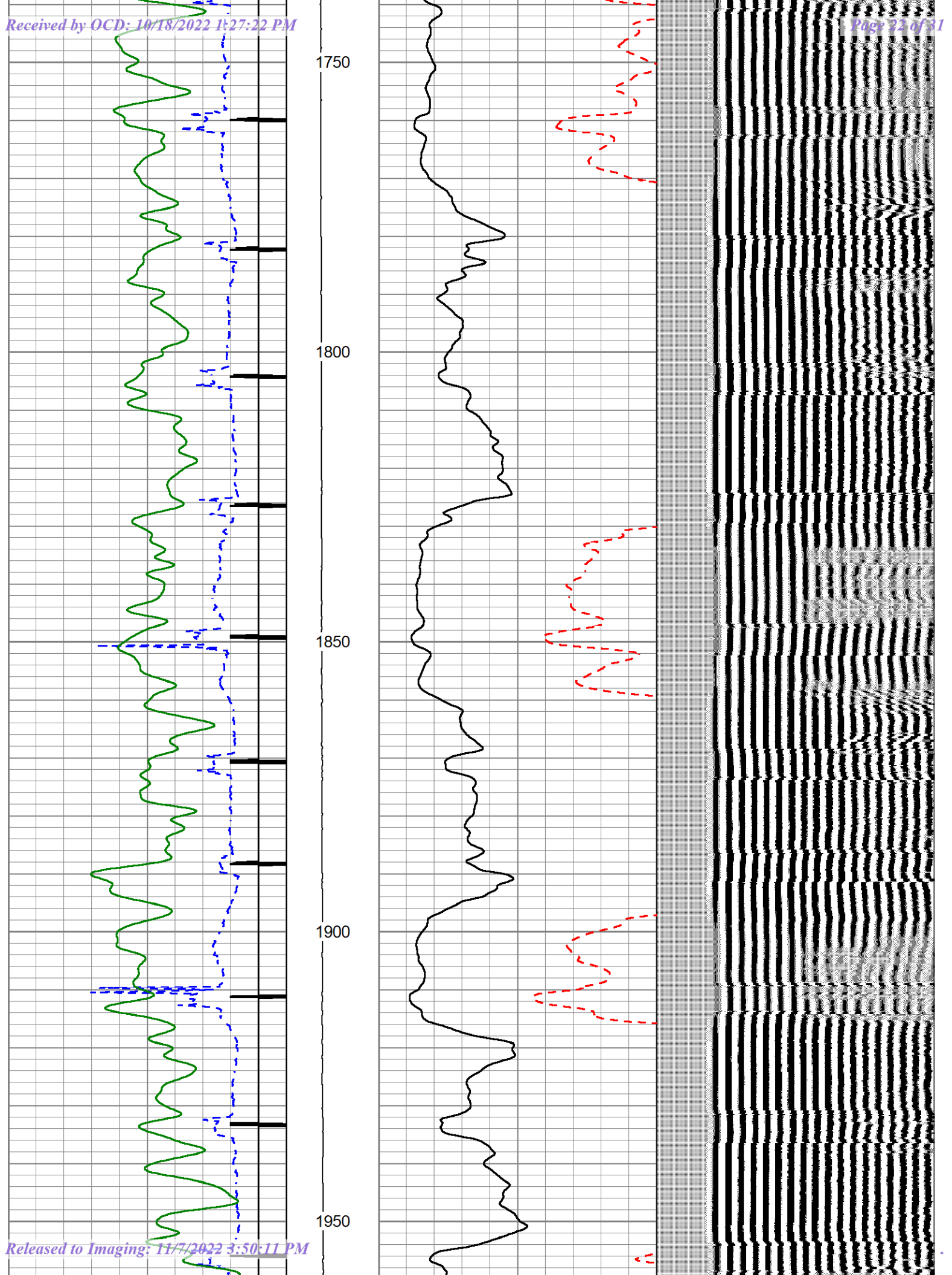


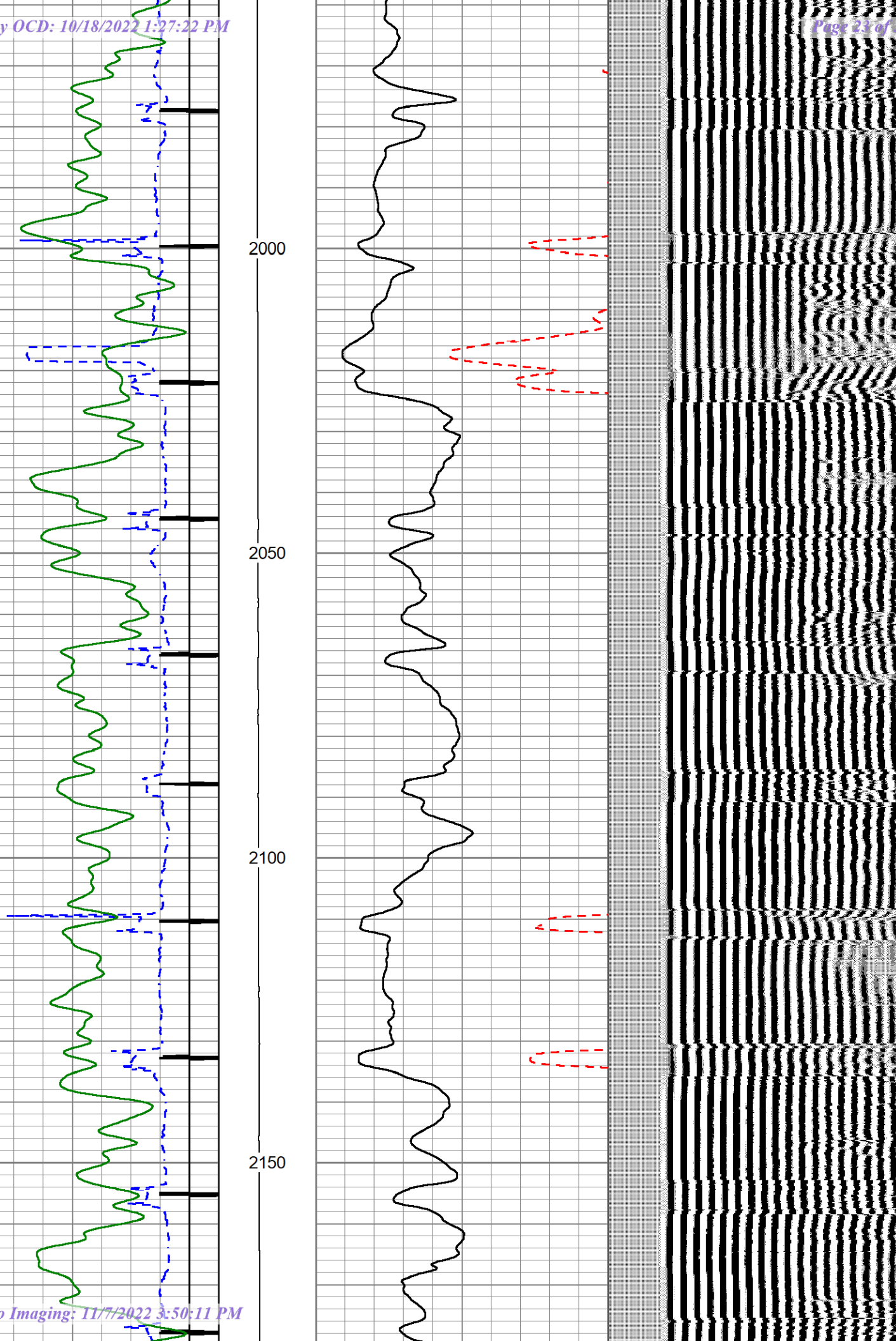




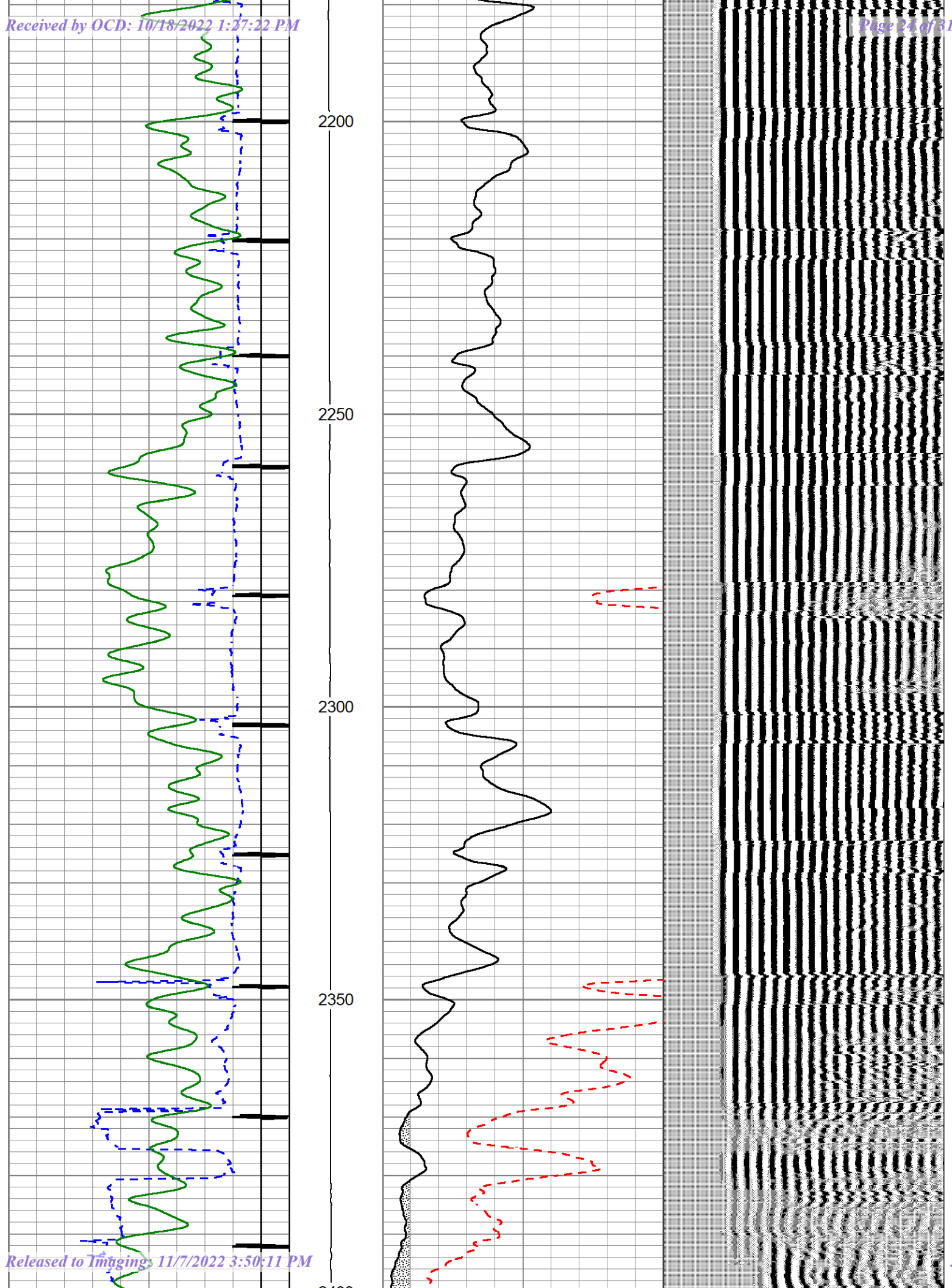




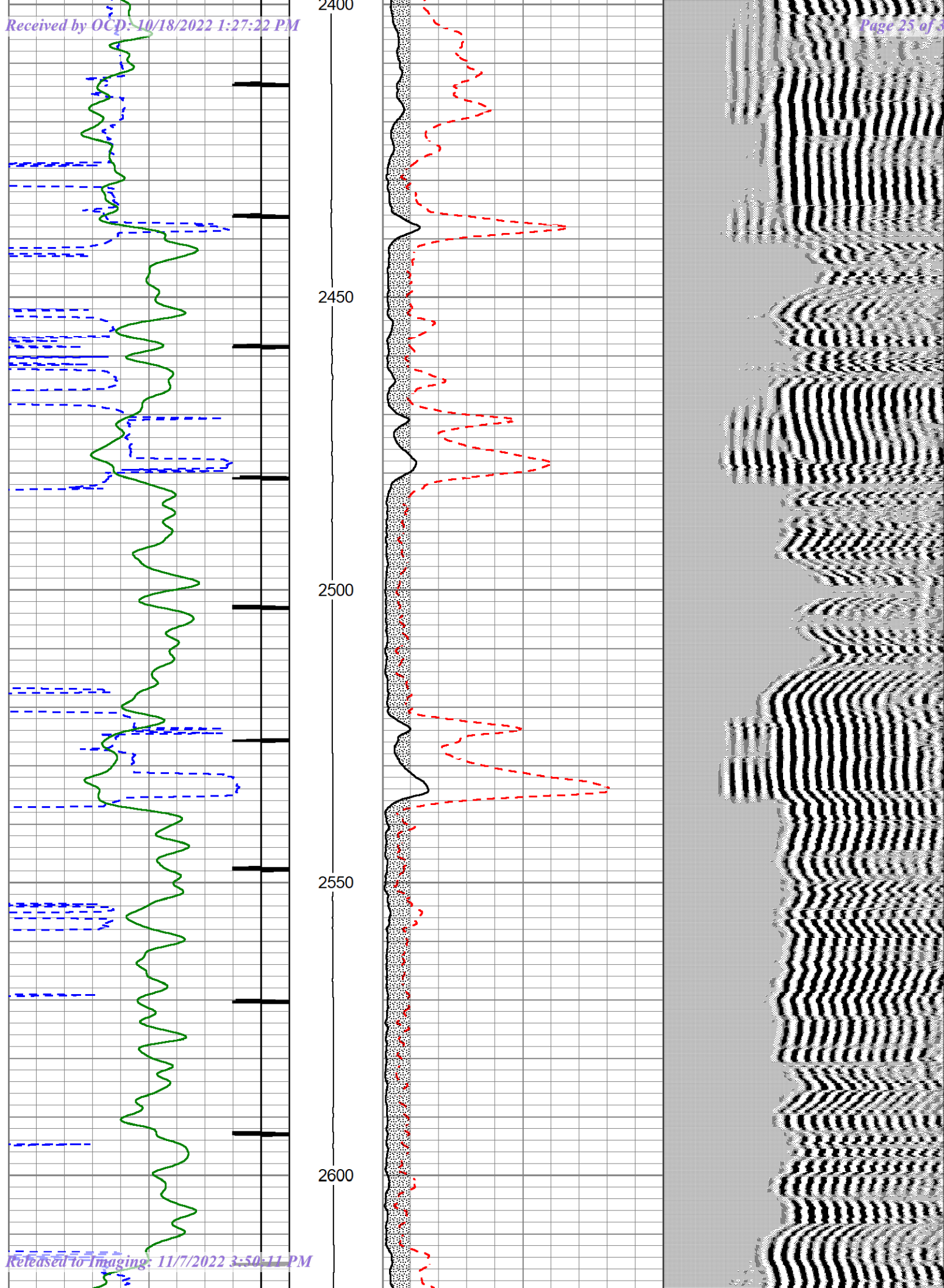


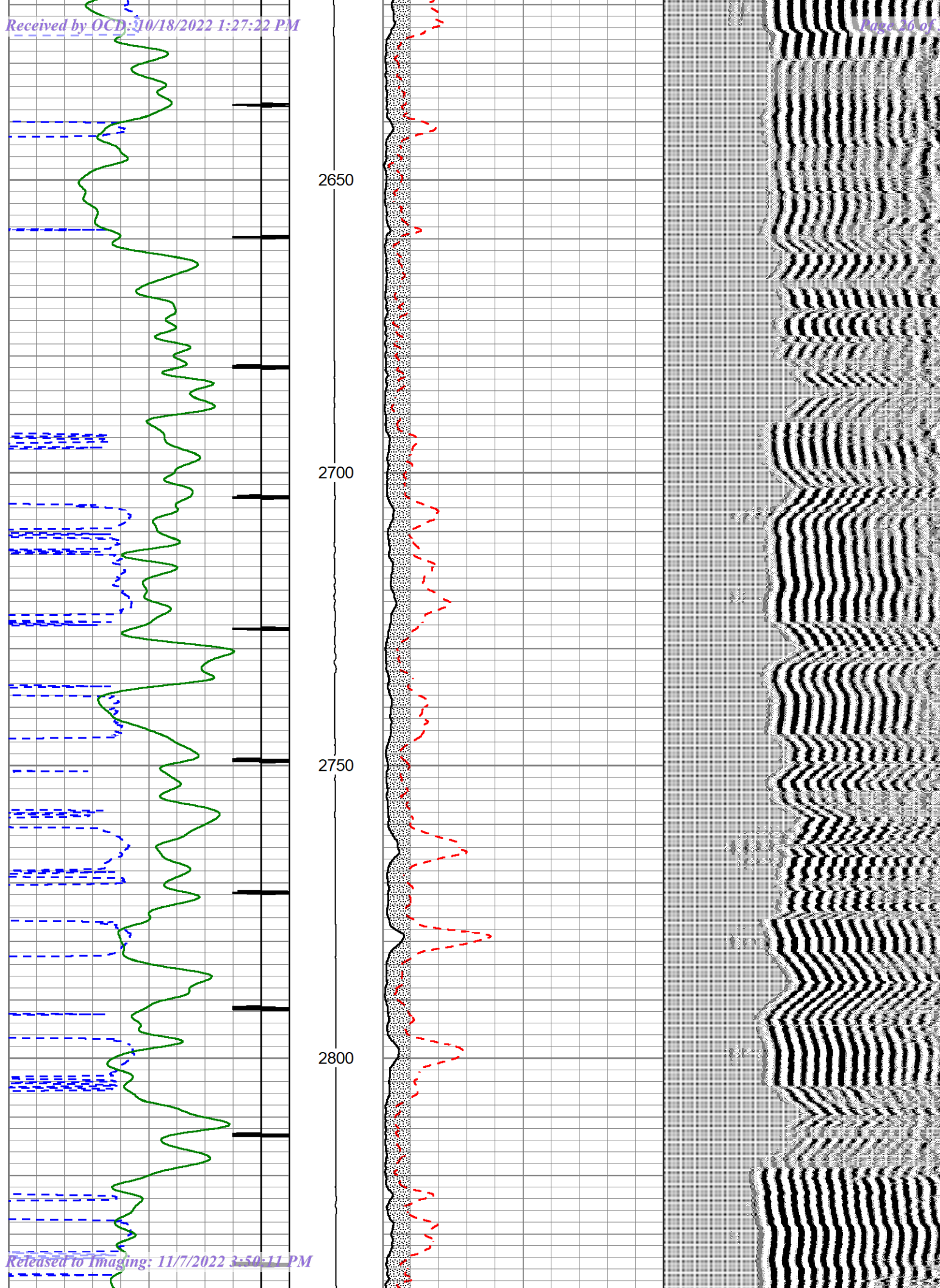




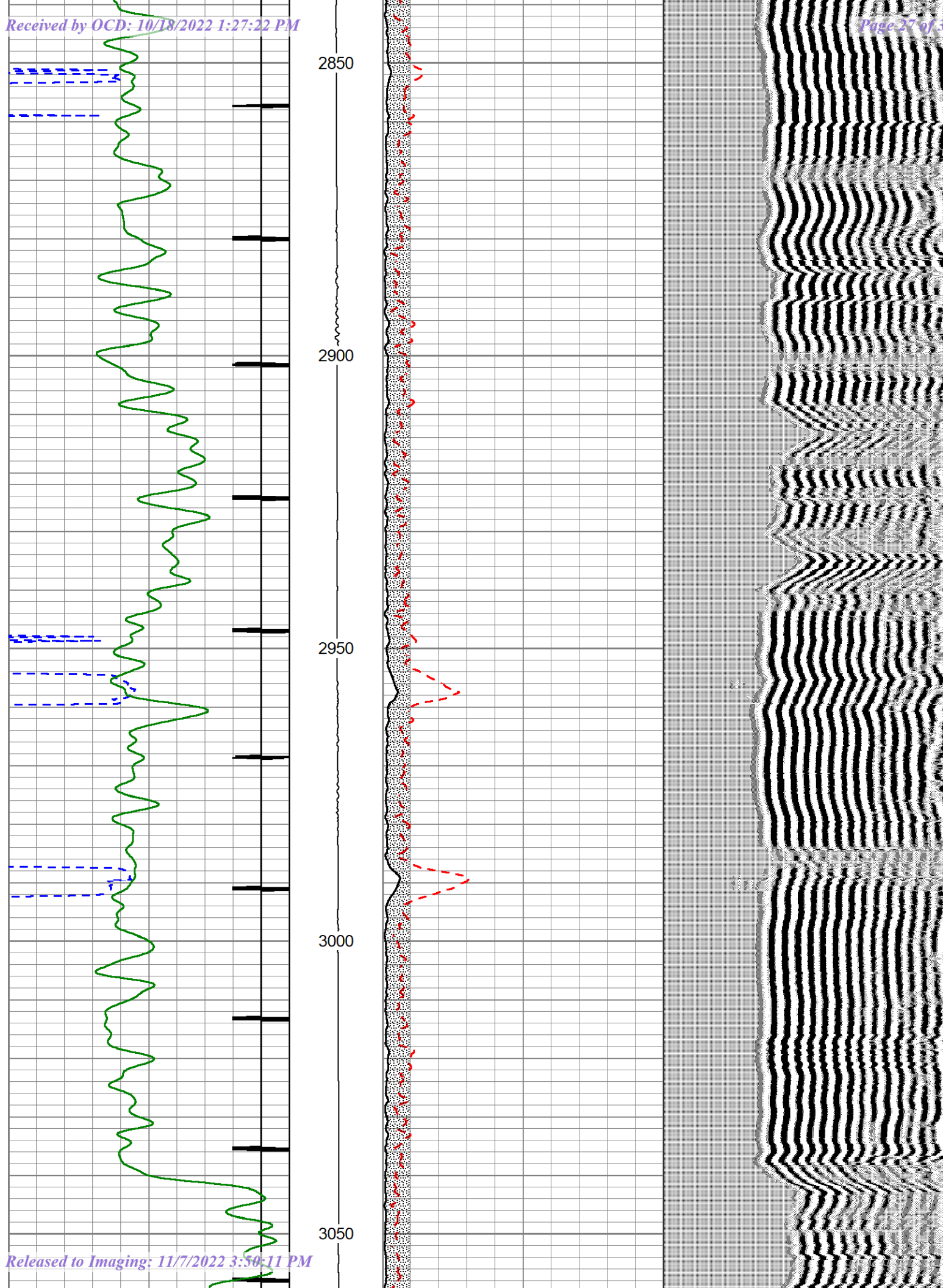


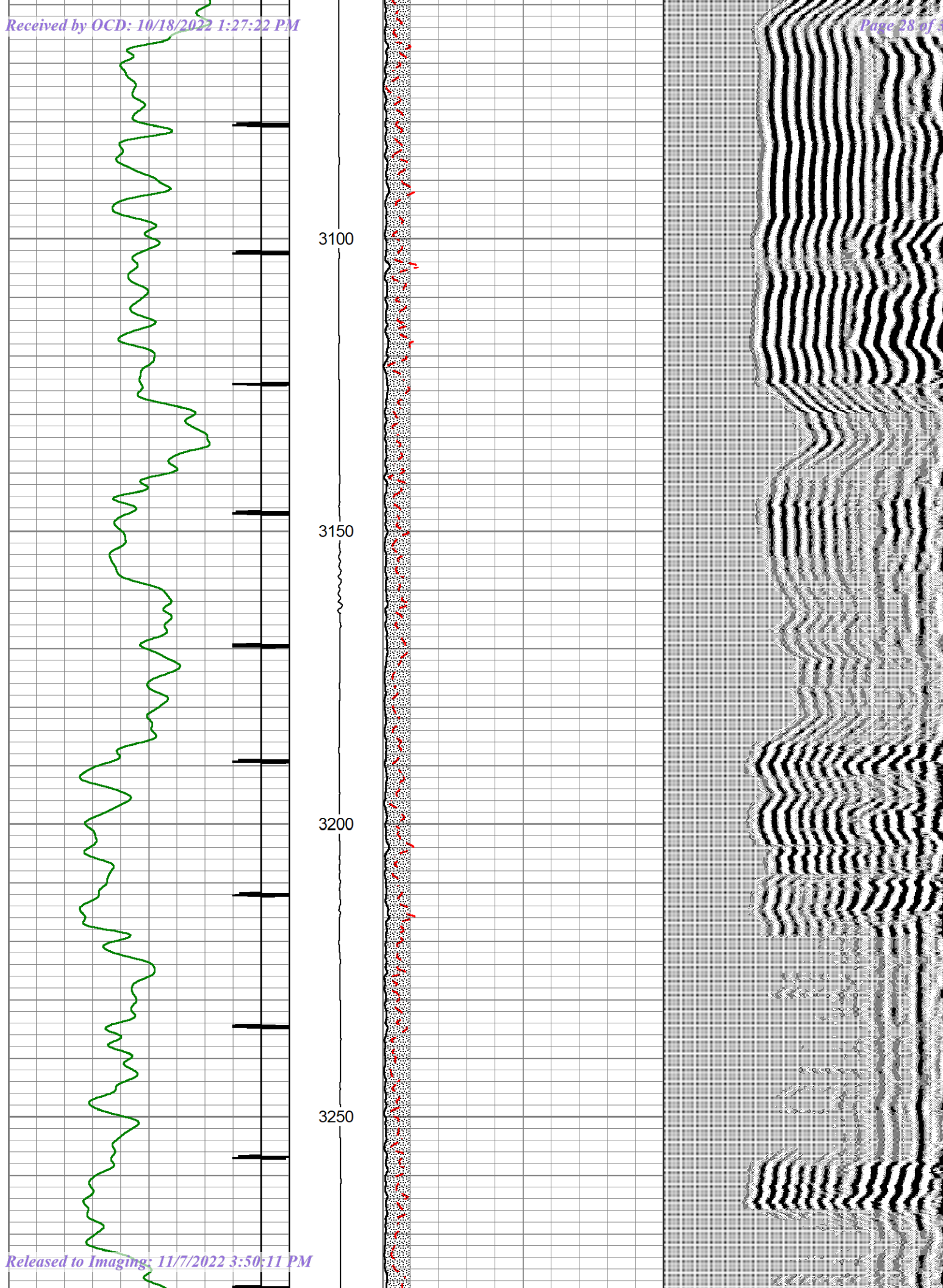


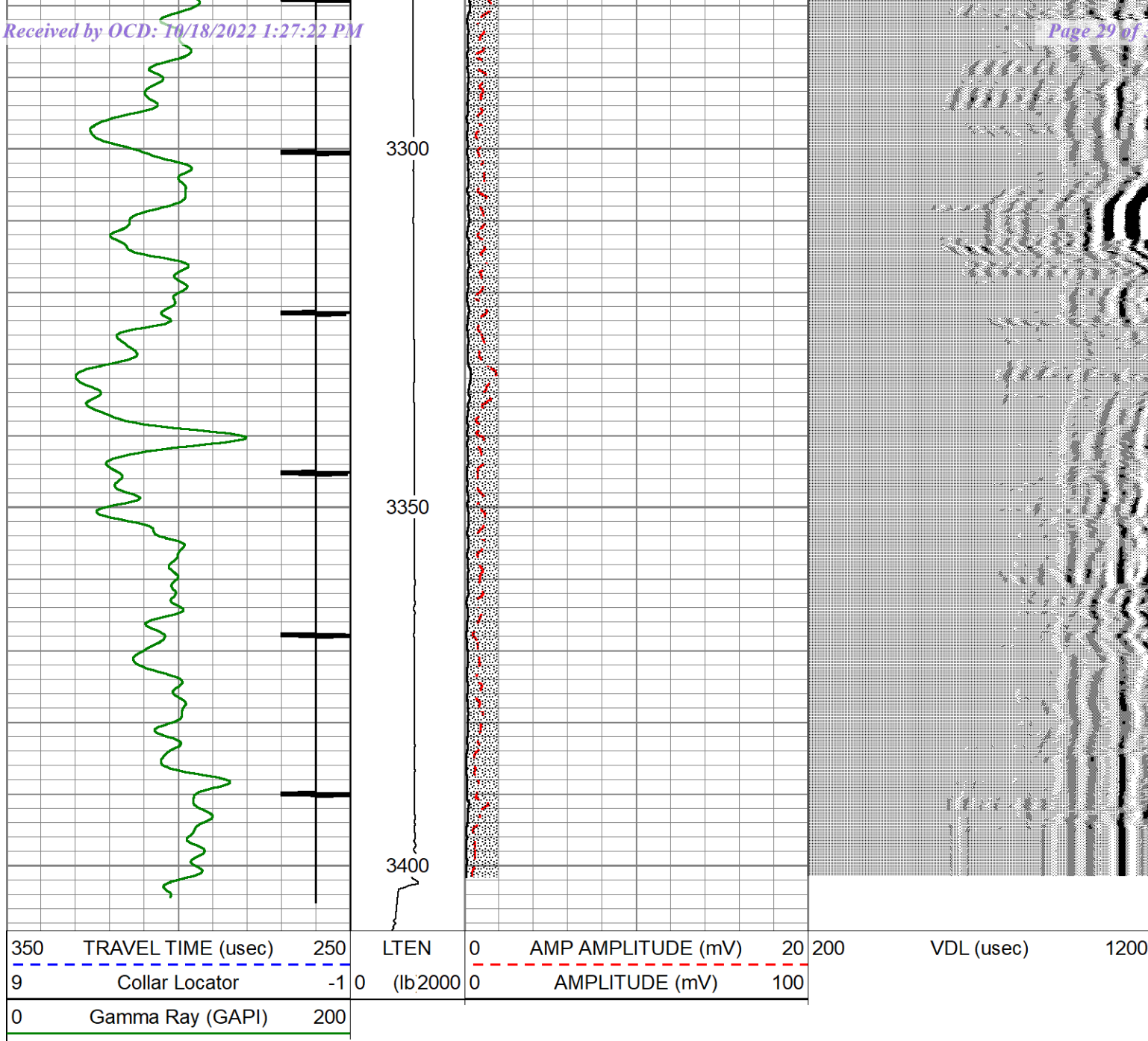












## Calibration Report

Database File jicarilla 126 s #4.db  
 Dataset Pathname pass5.2  
 Dataset Creation Wed Oct 05 17:44:14 2022

## Gamma Ray Calibration Report

Serial Number: 110774  
 Tool Model: Probe275Gr  
 Performed: (Not Performed)

Calibrator Value: 1.0 GAPI

Background Reading: 0.0 cps  
 Calibrator Reading: 1.0 cps

Sensitivity: 1.0000 GAPI/cps

## Segmented Cement Bond Log Calibration Report

Released to Imaging: 11/7/2022 3:50:11 PM

Serial Number: 2.75"



Calibration Casing Diameter:

4.500

in

Calibration Depth:

653.258

ft

Master Calibration, performed (Derived):

	Raw (v)		Calibrated (mv)		Results	
	Zero	Cal	Zero	Cal	Gain	Offset
3'	-0.003	1.261	0.250	81.196	64.021	0.454
CAL	0.007	1.298				
5'	-0.013	0.989	0.250	81.196	80.814	1.296
SUM						
S1	-0.008	1.366	0.000	91.000	66.262	0.501
S2	-0.001	1.332	0.000	91.000	68.240	0.072
S3	-0.004	1.339	0.000	91.000	67.776	0.280
S4	-0.006	1.296	0.000	91.000	69.916	0.395
S5	-0.004	1.301	0.000	91.000	69.755	0.271
S6	-0.005	1.296	0.000	91.000	69.974	0.329
S7	-0.004	1.326	0.000	91.000	68.450	0.254
S8	-0.002	1.382	0.000	91.000	65.780	0.105

Internal Reference Calibration, performed Mon Apr 11 10:16:33 2016:

	Raw (v)		Calibrated (v)		Results	
	Zero	Cal	Zero	Cal	Gain	Offset
CAL	0.000	0.000	0.007	1.298	1.000	0.000

Air Zero Calibration, performed Wed May 11 16:04:44 2016:

	Raw (v)		Calibrated (v)		Results	
	Zero		Zero		Offset	
3'	0.000		0.000		0.000	
5'	0.000		0.000		0.000	
SUM						
S1	0.000		0.000		0.000	
S2	0.000		0.000		0.000	
S3	0.000		0.000		0.000	
S4	0.000		0.000		0.000	
S5	0.000		0.000		0.000	
S6	0.000		0.000		0.000	
S7	0.000		0.000		0.000	
S8	0.000		0.000		0.000	

**District I**  
1625 N. French Dr., Hobbs, NM 88240  
Phone:(575) 393-6161 Fax:(575) 393-0720

**District II**  
811 S. First St., Artesia, NM 88210  
Phone:(575) 748-1283 Fax:(575) 748-9720

**District III**  
1000 Rio Brazos Rd., Aztec, NM 87410  
Phone:(505) 334-6178 Fax:(505) 334-6170

**District IV**  
1220 S. St Francis Dr., Santa Fe, NM 87505  
Phone:(505) 476-3470 Fax:(505) 476-3462

State of New Mexico  
Energy, Minerals and Natural Resources  
Oil Conservation Division  
1220 S. St Francis Dr.  
Santa Fe, NM 87505

CONDITIONS  
  
Action 151709

CONDITIONS

Operator: MorningStar Operating LLC 400 W 7th St Fort Worth, TX 76102	OGRID: 330132
	Action Number: 151709
	Action Type: [C-103] Sub. Plugging (C-103P)

CONDITIONS

Created By	Condition	Condition Date
smcgrath	well plugged 10/7/22	11/7/2022