

Well Name: EMERALD FEDERAL	Well Location: T22S / R32E / SEC 10 / SWSW /	County or Parish/State: LEA / NM
Well Number: 01	Type of Well: OIL WELL	Allottee or Tribe Name:
Lease Number: NMNM86147	Unit or CA Name:	Unit or CA Number:
US Well Number: 3002531976	Well Status: Producing Oil Well	Operator: COG OPERATING LLC

Accepted for Record Only SUBJECT TO LIKE APPROVAL BY BLM NMOCD 11/22/22 X 7

Notice Of Intent

Type of Submission: Notice Of Intent	Type of Action Plug and Abandonment
Date Sundry Submitted: 10/25/2017	
Disposition: Approved	Disposition Date: 02/14/2017

Remarks: 1. Tag RBP @ 7200' . 2. Set 5 1/2" CIBP @ 6845'. Circulate hole w/ MLF. Pressure test csg. Spot 25 sx cmt @ 6845-6745'. 3. Spot 25 sx cmt @ 4570-4470'. WOC & Tag (8 5/8" Shoe) 4. Perf & Sqz @ 2800-2700'. 5. Perf & Sqz @ 1365-1255'. WOC & Tag (T/Salt). 6. Perf & Sqz @ 907-807'. WOC & Tag (1 33/8" Shoe) 7. Perf & Sqz 100 @ 200'-Surface. 8. Cut off Wellhead, verify cmt to surface, install Dry Hole Marker 02/14/2017 approved with attached conditions of approval pswartz 1. Within 90 days of these conditions of approval for the processed Electronic Submission #384349 notice of intent begin wellbore operations or request an extension. 2. Operator is required to have the BLM approved NOI procedure with applicable conditions of approval on location during this workover operation. 3. Conditions of Approval reflect a procedure based on available documentation for this wellbore. The BLM workover witness and NOI approver may adjust operations so as not to hinder achievable abandonment requirements. 4. Due to being within the Lesser Prairie Chicken habitat, this workover activity will be restricted to the hours of 9:00am through 3:00am for the period of March 1 through June 15. 5. Subject to like approval by the New Mexico Oil Conservation Division. 6. Notify 575-393-3612 Lea Co as work begins. If there is no response leave a voice mail with the API#, workover purpose, and a call back phone number. 7. Surface disturbance beyond the existing pad must have prior approval. 8. A closed loop system is required. The operator shall properly dispose of drilling/circulating contents at an authorized disposal site. Tanks are required for all operations, no excavated pits. 9. Functional H2S monitoring equipment shall be on location. 10. Use Blow Out Prevention Equipment 3000 (3M). All BOPE and workover procedures shall establish fail safe well control. Ram(s) for the work string(s) used is required equipment. Manual BOP closure system including a blind ram and pipe ra

NOI Attachments

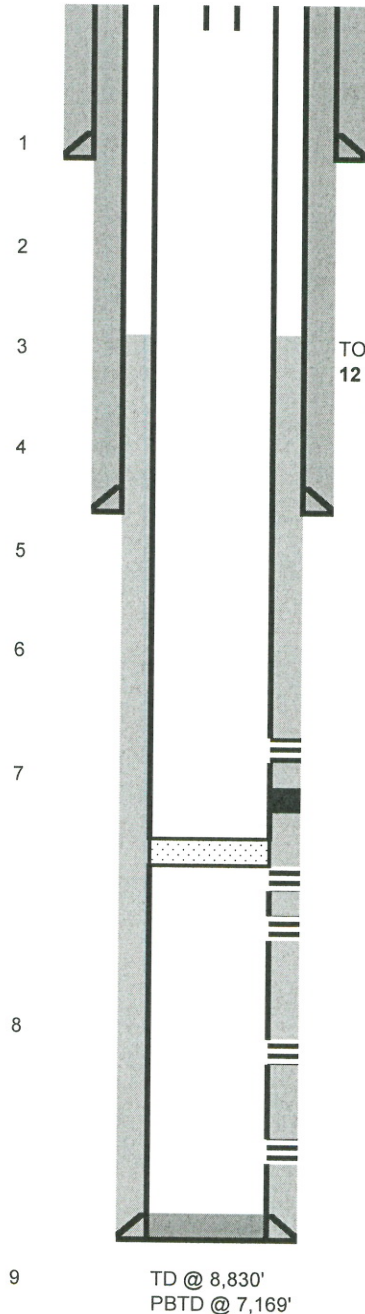
Procedure Description

COG EMERALD FED #1 WBD.PDF

Author:	MRM (7/2017)	
Well Name	Emerald Federal	Well No. #1
Field	Livingston Ridge	API #: 30-025-31976
County	Lea	Prop #: 15522
State	New Mexico	Zone: Delaware
Spud Date	5/24/1993	660 FSL & 660 FWL
GL	3,793'	Sec 10 T22S R32E
KB		

Description	O.D.	Grade	Weight	Depth	Cmt Sx	TOC
Surface Csg	13.375"	H-40 & J-55	48 & 54.5	857'	900	surface
Inter Csg	8.625"	J-55	24 & 32	4,520'	1,500	surface
Prod Csg	5.5"	N-80 & K-55	17	8,832'	1,275	3,070'
Liner						

Originally drill
Maralo reente
COG took ov



17 1/2" hole

13-3/8" (48# & 54.5#) @ 857' with 900 sks, circ with ?? sks
TOC @ surf

TOC @ 3,070'

12 1/4" hole

8-5/8" (24# & 32#) @ 4,520' with 1,500 sks, circ with 76 sks
TOC @ surf

Formation Tops

Castile	2,770'
Bell Canyon	4,842'
Cherry Canyon	5,790'
Brushy Canyon	6,990'
Bone Springs	8,757'

Well T&A'd on 06/11/1993

Plug #1	8,832'-8,550'	60 sks
Plug #2	7,210'-7,090'	50 sks
Plug #3	6,960'-6,880'	60 sks
Plug #4	4,600'-4,550'	60 sks in & out 8-5/8" csg

6,894'-6,907' (Delaware) 28 holes - 03/01/1995 frac'd with 14,000 lbs & 10/04/1995 acidized with 1500 gal

7,145'-7,153' (Delaware) 18 holes - 09/01/1994

squeezed with 150 sks cement, unsuccessful so squeezed another 150 sks.

RBP @ 7,200' with 35' sand on top (12/05/1994)

7,269'-7,395' (Delaware) 19 holes - 09/01/1994 frac'd with 45,000 lbs

7,642'-7,655' (Delaware) 20 holes - 09/01/1994 frac'd with 20,500 lbs

8,045'-8,077' (Delaware) 10 holes - 09/01/1994 frac'd with 30,000 lbs

8,553'-8,582' (Delaware) 10 holes - 09/01/1994 frac'd with 27,000 lbs

7 7/8" hole

5-1/2" (17#) @ 8,832' with 1,275 sks

TOC @ 3,070'

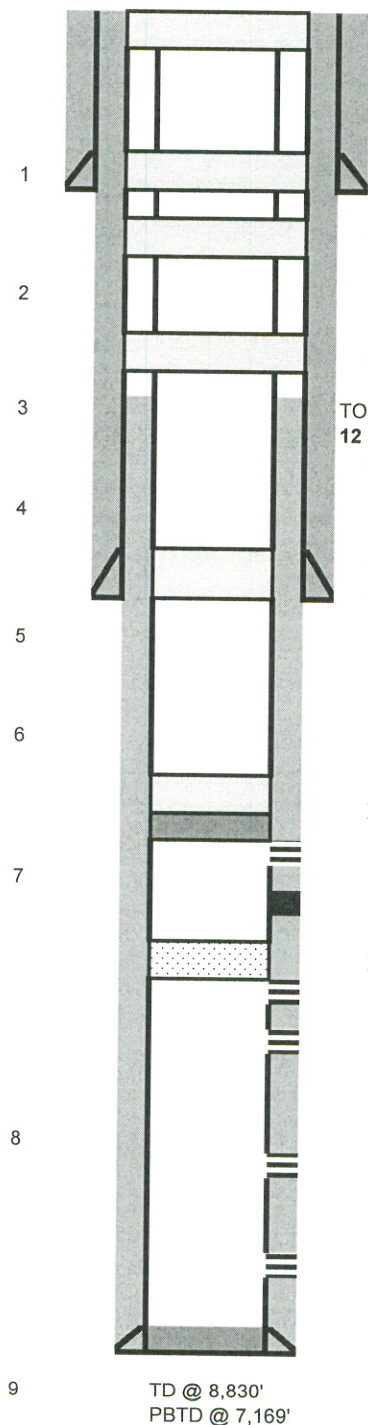
32.4007378

-103.6690369

Author:	MRM (7/2017)	
Well Name	Emerald Federal	Well No. #1
Field	Livingston Ridge	API #: 30-025-31976
County	Lea	Prop #: 15522
State	New Mexico	Zone: Delaware
Spud Date	5/24/1993	660 FSL & 660 FWL
GL	3,793'	Sec 10 T22S R32E
KB		

Description	O.D.	Grade	Weight	Depth	Cmt Sx	TOC
Surface Csg	13.375"	H-40 & J-55	48 & 54.5	857'	900	surface
Inter Csg	8.625"	J-55	24 & 32	4,520'	1,500	surface
Prod Csg	5.5"	N-80 & K-55	17	8,832'	1,275	3,070'
Liner						

Originally drill
Maralo reente
COG took ov



7. Perf & Sqz 100 @ 200'-Surface.

17 1/2" hole

13-3/8" (48# & 54.5#) @ 857' with 900 sks, circ with ?? sks
TOC @ surf

6. Perf & Sqz @ 907-807'. WOC & Tag (1 33/8" Shoe)

5. Perf & Sqz @ 1365-1255'. WOC & Tag (T/Salt).

4. Perf & Sqz @ 2800-2700'.

TOC @ 3,070'

12 1/4" hole

8-5/8" (24# & 32#) @ 4,520' with 1,500 sks, circ with 76 sks
TOC @ surf

3. Spot 25 sx cmt @ 4570-4470'. WOC & Tag (8 5/8" Shoe)

Formation Tops

Castile	2,770'
Bell Canyon	4,842'
Cherry Canyon	5,790'
Brushy Canyon	6,990'
Bone Springs	8,757'

Well T&A'd on 06/11/1993

Plug #1	8,832'-8,550'	60 sks
Plug #2	7,210'-7,090'	50 sks
Plug #3	6,960'-6,880'	60 sks
Plug #4	4,600'-4,550'	60 sks in & out 8-5/8" csg

2. Set 5 1/2" CIBP @ 6845'. Spot 25 sx cmt @ 6845-6745'.

6,894'-6,907' (Delaware) 28 holes - 03/01/1995 frac'd with 14,000 lbs & 10/04/1995 acidized with 1500 gal

7,145'-7,153' (Delaware) 18 holes - 09/01/1994

squeezed with 150 sks cement, unsuccessful so squeezed another 150 sks.

1. Tag RBP @ 7200'.

RBP @ 7,200' with 35' sand on top (12/05/1994)

7,269'-7,395' (Delaware) 19 holes - 09/01/1994 frac'd with 45,000 lbs

7,642'-7,655' (Delaware) 20 holes - 09/01/1994 frac'd with 20,500 lbs

8,045'-8,077' (Delaware) 10 holes - 09/01/1994 frac'd with 30,000 lbs

8,553'-8,582' (Delaware) 10 holes - 09/01/1994 frac'd with 27,000 lbs

7 7/8" hole

5-1/2" (17#) @ 8,832' with 1,275 sks

TOC @ 3,070'

TD @ 8,830'
PBTD @ 7,169'

District I
1625 N. French Dr., Hobbs, NM 88240
Phone:(575) 393-6161 Fax:(575) 393-0720
District II
811 S. First St., Artesia, NM 88210
Phone:(575) 748-1283 Fax:(575) 748-9720
District III
1000 Rio Brazos Rd., Aztec, NM 87410
Phone:(505) 334-6178 Fax:(505) 334-6170
District IV
1220 S. St Francis Dr., Santa Fe, NM 87505
Phone:(505) 476-3470 Fax:(505) 476-3462

State of New Mexico
Energy, Minerals and Natural Resources
Oil Conservation Division
1220 S. St Francis Dr.
Santa Fe, NM 87505

COMMENTS

Action 153022

COMMENTS

Operator: COG OPERATING LLC 600 W Illinois Ave Midland, TX 79701	OGRID: 229137
	Action Number: 153022
	Action Type: [C-103] NOI Plug & Abandon (C-103F)

COMMENTS

Created By	Comment	Comment Date
plmartinez	DATA ENTRY PM	11/28/2022

District I
1625 N. French Dr., Hobbs, NM 88240
Phone:(575) 393-6161 Fax:(575) 393-0720
District II
811 S. First St., Artesia, NM 88210
Phone:(575) 748-1283 Fax:(575) 748-9720
District III
1000 Rio Brazos Rd., Aztec, NM 87410
Phone:(505) 334-6178 Fax:(505) 334-6170
District IV
1220 S. St Francis Dr., Santa Fe, NM 87505
Phone:(505) 476-3470 Fax:(505) 476-3462

State of New Mexico
Energy, Minerals and Natural Resources
Oil Conservation Division
1220 S. St Francis Dr.
Santa Fe, NM 87505

CONDITIONS

Action 153022

CONDITIONS

Operator: COG OPERATING LLC 600 W Illinois Ave Midland, TX 79701	OGRID: 229137
	Action Number: 153022
	Action Type: [C-103] NOI Plug & Abandon (C-103F)

CONDITIONS

Created By	Condition	Condition Date
kfortner	Like approval from BLM	11/22/2022