

Office  
 District I - (575) 393-6161  
 1625 N. French Dr., Hobbs, NM 88240  
 District II - (575) 748-1283  
 811 S. First St., Artesia, NM 88210  
 District III - (505) 334-6178  
 1000 Rio Brazos Rd., Aztec, NM 87410  
 District IV - (505) 476-3460  
 1220 S. St. Francis Dr., Santa Fe, NM  
 87505

State of New Mexico  
 Energy, Minerals and Natural Resources

Form C-103  
 Revised July 18, 2013

OIL CONSERVATION DIVISION  
 1220 South St. Francis Dr.  
 Santa Fe, NM 87505

WELL API NO. 30-025-03831
5. Indicate Type of Lease STATE <input checked="" type="checkbox"/> FEE <input type="checkbox"/>
6. State Oil & Gas Lease No.
7. Lease Name or Unit Agreement Name LOVINGTON PADDOCK UNIT
8. Well Number 060
9. OGRID Number 241333
10. Pool name or Wildcat [40660] LOVINGTON, PADDOCK

SUNDRY NOTICES AND REPORTS ON WELLS (DO NOT USE THIS FORM FOR PROPOSALS TO DRILL OR TO DEEPEN OR PLUG BACK TO A DIFFERENT RESERVOIR. USE "APPLICATION FOR PERMIT" (FORM C-101) FOR SUCH PROPOSALS.)	
1. Type of Well: Oil Well <input type="checkbox"/> Gas Well <input type="checkbox"/> Other <b>INJECTION</b>	
2. Name of Operator CHEVRON MIDCONTINENT, L.P.	
3. Address of Operator 6301 Deauville BLVD, Midland TX 79706	
4. Well Location Unit Letter <b>F</b> : <b>1980</b> feet from the <b>NORTH</b> line and <b>2310</b> feet from the <b>WEST</b> line Section <b>01</b> Township <b>17S</b> Range <b>36E</b> NMPM County <b>LEA</b>	
11. Elevation (Show whether DR, RKB, RT, GR, etc.)	

12. Check Appropriate Box to Indicate Nature of Notice, Report or Other Data

NOTICE OF INTENTION TO:	SUBSEQUENT REPORT OF:
PERFORM REMEDIAL WORK <input type="checkbox"/>	REMEDIAL WORK <input type="checkbox"/>
TEMPORARILY ABANDON <input type="checkbox"/>	ALTERING CASING <input type="checkbox"/>
PULL OR ALTER CASING <input type="checkbox"/>	COMMENCE DRILLING OPNS. <input type="checkbox"/>
DOWNHOLE COMMINGLE <input type="checkbox"/>	P AND A <input type="checkbox"/>
CLOSED-LOOP SYSTEM <input type="checkbox"/>	CASING/CEMENT JOB <input type="checkbox"/>
OTHER: <input type="checkbox"/>	OTHER: <input type="checkbox"/>

13. Describe proposed or completed operations. (Clearly state all pertinent details, and give pertinent dates, including estimated date of starting any proposed work). SEE RULE 19.15.7.14 NMAC. For Multiple Completions: Attach wellbore diagram of proposed completion or recompletion.

Move in, rig up. Pressure test tubing. If tubing test passes, plan to squeeze 25 sacks Class C cement below packer. If tubing fails, plan to pull packer and set CIBP. Once primary barrier is established, proceed with the following.  
 WOC, pressure test primary barrier.  
 Spot 26 sacks Class C cement from 5983' to 5733'. Injection zone.  
 Spot 39 sacks Class C cement from 4581' to 4200'. San Andres, Grayburg.  
 Perforate & squeeze 35 sacks Class C cement from 3864' to 3714'. Queen. WOC, tag, test if able to inject into annulus.  
 Perforate & squeeze 35 sacks Class C cement from 3260' to 3110'. Seven Rivers.  
 Perforate & squeeze 117 sacks Class C cement from 2100' to 1600'. Salt, Rustler, 8-5/8" shoe. WOC, tag, test.  
 Conduct bubble test - \*\*if bubble test fails, plan to cut & pull from 650'. Set stub plug 50' below, 100' above stub.  
 Perforate & squeeze 59 sacks Class C cement from 250' to 0'. Surface, fresh water.

Spud Date:

Rig Release Date:

SEE ATTACHED CONDITIONS  
OF APPROVAL

4" diameter 4' tall Above Ground Marker

I hereby certify that the information above is true and complete to the best of my knowledge and belief.

SIGNATURE Hayes Thibodeaux TITLE Engineer DATE 12/19/2022

Type or print name Hayes Thibodeaux E-mail address: Hayes.Thibodeaux@chevron.com PHONE: 281-726-9683

For State Use Only

APPROVED BY: Kerry Fortner TITLE Compliance Officer A DATE 12/20/22

Conditions of Approval (if any):  
575-263-6633

**CONDITIONS OF APPROVAL  
FOR PLUGGING AND ABANDONMENT  
OCD - Southern District**

The following is a guide or checklist in preparation of a plugging program, this is not all inclusive and care must be exercised in establishing special plugging programs in unique and unusual cases, Notify NMOCD District Office I (Hobbs) at (575)-263-6633 at least 24 hours before beginning work. After MIRU rig will remain on well until it is plugged to surface. OCD is to be notified before rig down.

**Company representative will be on location during plugging procedures.**

1. A notice of intent to plug and abandon a wellbore is required to be approved before plugging operations are conducted. A cement evaluation tool is required in order to ensure isolation of producing formations, protection of water and correlative rights. A cement bond log or other accepted cement evaluation tool is to be provided to the division for evaluation if one has not been previously run or if the well did not have cement circulated to surface during the original casing cementing job or subsequent cementing jobs. Insure all bradenheads have been exposed, identified and valves are operational prior to rig up.
2. Closed loop system is to be used for entire plugging operation. Upon completion, contents of steel pits are to be hauled to a permitted disposal location.
3. Trucking companies being used to haul oilfield waste fluids to a disposal - commercial or private- shall have an approved NMOCD C-133 permit. A copy of this permit shall be available in each truck used to haul waste products. It is the responsibility of the operator as well as the contractor, to verify that this permit is in place prior to performing work. Drivers shall be able to produce a copy upon request of an NMOCD Field inspector.
4. Filing a subsequent C-103 will serve as notification that the well has been plugged.
5. A final C-103 shall be filed (and a site inspection by NMOCD Inspector to determine if the location is satisfactorily cleaned, all equipment, electric poles and trash has been removed to Meet NMOCD standards) before bonding can be released.
6. If work has not begun within 1 Year of the approval of this procedure, an extension request must be file stating the reason the well has not been plugged.
7. Squeeze pressures are not to exceed 500 psi, unless approval is given by NMOCD.
8. Produced water will not be used during any part of the plugging operation.
9. Mud laden fluids must be placed between all cement plugs mixed at 25 sacks per 100 bbls of water.
10. All cement plugs will be a minimum of 100' in length or a minimum of 25 sacks of cement, whichever is greater. 50' of calculated cement excess required for inside casing plugs and 100% calculated cement excess required on outside casing plugs.
11. Class 'C' cement will be used above 7500 feet.
12. Class 'H' cement will be used below 7500 feet.
13. A cement plug is required to be set 50' above and 50' below, casing stubs, DV tools, attempted casing cut offs, cement tops outside casing, salt sections and anywhere the casing is perforated, these plugs require a 4 hour WOC and then will be tagged
14. All Casing Shoes Will Be Perforated 50' below shoe depth and Attempted to be Squeezed, cement needs to be 50' above and 50' Below Casing Shoe inside the Production Casing.
16. When setting the top out cement plug in production, intermediate and surface casing, wellbores should remain full at least 30 minutes after plugs are set
17. A CIBP is to be set within 100' of production perforations, capped with 100' of cement, WOC 4 hours and tag.
18. A CIBP with 35' of cement may be used in lieu of the 100' plug if set with a bailer. This plug will be placed within 100' of the top perforation, (WOC 4 hrs and tag).

19. No more than 3000' is allowed between cement plugs in cased hole and 2000' in open hole.
20. Some of the Formations to be isolated with cement plugs are: These plugs to be set to isolate formation tops
- A) Fusselman
  - B) Devonian
  - C) Morrow
  - D) Wolfcamp
  - E) Bone Springs
  - F) Delaware
  - G) Any salt sections
  - H) Abo
  - I) Glorieta
  - J) Yates.
  - K) Potash---(In the R-111-P Area (Potash Mine Area),  
A solid cement plug must be set across the salt section. Fluid used to mix the cement shall be saturated with the salts that are common to the section penetrated and in suitable proportions, not more than 3% calcium chloride (by weight of cement) will be considered the desired mixture whenever possible, WOC 4 hours and tag, this plug will be 50' below the bottom and 50' above the top of the Formation.
21. If cement does not exist behind casing strings at recommended formation depths, the casing can be cut and pulled with plugs set at recommended depths. If casing is not pulled, perforations will be shot and cement squeezed behind casing, WOC and tagged. These plugs will be set 50' below formation bottom to 50' above formation top inside the casing.

### **DRY HOLE MARKER REQUIREMENTS**

The operator shall mark the exact location of the plugged and abandoned well with a steel marker not less than four inches in diameter, 3' below ground level with a plate of at least ¼" welded to the top of the casing and the dry hole marker welded on the plate with the following information welded on the dry hole marker:

1. Operator name
2. Lease and Well Number
3. API Number
4. Unit letter
5. Quarter Section (feet from the North, South, East or West)
6. Section, Township and Range
7. Plugging Date
8. County

### **SPECIAL CASES -----AGRICULTURE OR PRARIE CHICKEN BREEDING AREAS**

In these areas, a below ground marker is required with all pertinent information mentioned above on a plate, set 3' below ground level, a picture of the plate will be supplied to NMOCD for record, the exact location of the marker (longitude and latitude by GPS) will be provided to NMOCD (We typically require a current survey to verify the GPS)

### **SITE REMEDIATION DUE WITHIN ONE YEAR OF WELL PLUGGING COMPLETION**

**Well Name:** Lovington Paddock Unit 060

**API:** 30-025-03831

**Well History:** injection well with IPC tubing installed

**All cement plugs are based on 1.18 yield for Class H and 1.32 yield for Class C**

1. Install casing Riser on intermediate and surface casing.
  - a. Follow the MCBU Ground Disturbance OE Standard before starting any excavations (One Call, Dig Plan)
  - b. Paint the casing valves as follow  
  
Production: Blue  
  
Intermediate: White  
  
Surface: Yellow
2. Call and notify NMOCD 24 hrs. before operations begin.
3. MIRU pulling unit.
  - a. intrinsically safe fans and H2S scavenger required due to known H2S in the field.
4. Check well pressures, kill well as necessary following The Chevron Initial Well Kill Operating Guidelines.
  - a. Bubble test should be at least 30 minutes and follow the bubble test SOP. On all casing annuli, if bubble test fails Chevron intends to cut and pull casing or eliminate SCP with another means after the well is plugged to a certain point agreed upon by the NMOCD and Chevron.
  - b. Bubble tests should occur each morning, critical times are prior to pumping upper hydrocarbon plug or pumping cement to surface.
  - c. Perform a final bubble test after cement has hardened at surface.
5. N/U BOPE using rubber coated hangers provided by Chevron, and pressure test to 250 psi low and 1,000 psi or MASP (per Chevron operating guidelines) for 5 minutes each.
  - a. Contact engineer if unable to release packer, do not shear or unset Packer without the BOP N/U first to mitigate any risks of well control events.
6. Fill casing above packer and attempt to pressure test casing/tubing to at least 1,000 psi for 15 minutes or the highest pressure expected while plugging the well.
  - a. If test passes, can utilize tubing for work string.
  - b. Sunset Well Services has frequently opted to bullhead cement below packer to assist in killing well. If this is selected as path forward, plan to spot cement plug #1 per C-103 above the packer once released.
  - c. If test fails, pick up a work string provided by Chevron.
7. If tubing pressure tested, stand back pipe. If it failed, lay down and prepare to run a work string.
  - a. If packer will not release contact engineer about other means to pull and lay down packer. (come off the ON/OFF Tool or Cut tubing above packer)
  - b. If tubing or packer is stuck contact Engineer for plan forward.
  - c. If tubing collars are dragging out of the hole, SWA and contact engineer, potential casing damage.

8. If cement was squeezed below the packer to isolate the injection zone, skip the job steps regarding setting CIBP and proceed to spotting cement on top of CIBP, proceed per C-103F.
9. MIRU wireline and lubricator.
10. Pressure test lubricator to 500 psi or MASP (whichever is larger) for 10 minutes.
  - a. If MASP is greater than 1,000 psi, contact the engineer to discuss running grease injection.
11. Run and set CIBP per approved C-103
  - a. Skip gauge run if Packer pulled freely past setting depth.
12. Fill well with fresh water and pressure test casing to 1,000 psi for 15 minutes.
  - a. Contact the engineer if pressure test fails, record pressure test results.
13. TIH and tag CIBP.
14. Spot MLF, subtracting cement volumes. Do not place MLF until casing pressure tests or above first Perf and Squeezes. If casing pressure test failed in step 13., Chevron requires all casing holes/damage to be covered with cement.
15. Spot 26 sacks Class C cement from 5983' to 5733'. Isolate injection interval
16. Spot 39 sacks Class C cement from 4581' to 4200'. San Andres + Grayburg.
17. Perforate & squeeze 35 sacks Class C cement from 3864' to 3714'. Isolate Queen
18. Perforate & squeeze 35 sacks Class C cement from 3260' to 3110'. Isolate Seven Rivers
19. Perforate & squeeze 117 sacks Class C cement from 2100' to 1600'. Salt, Rustler, 8-5/8" shoe
20. Perform 30-minute bubble test on surface and production casings. Record results to meet the barrier standard intent. If bubble test fails:
  - a. Perforate at 650'. If outer string is leaking aim for 350' below the surface shoe, whichever is deeper. Adjust depth as necessary on a well-by-well basis. Factor in bubble test failure rate, etc. into the decision.
  - b. If well circulates, document well as casing cut/pull candidate in Projected Operations in WellView. Discuss with superintendent if casing cut/pull operations will immediately take place or if well should be suspended temporarily until a queue of cut & pull candidates is built
  - c. If well does not circulate, plan to spot 25 sacks of cement from 750' to 500' and R/D.
    - i. Projected operations if well does not circulate: plan to run CBL (offline)
  - d. If casing is cut & pulled, a stub plug ranging from 50' below the stub to minimum of 100' above the stub must be spotted. WOC, tag, pressure test.
21. Proceed to next job step only after confirming a passing bubble test on all strings
22. Perforate & circulate 59 sacks Class C cement from 250' to 0'.
23. While RDMO, perform 30-minute bubble test on surface and production casings. Record results to meet the barrier standard intent.
24. Cut all casings & anchors & remove 3' below grade. Verify cement to surface & weld on dry hole marker (4" diameter, 4' tall). Clean location.

Note: All cement plugs class "C" (<7,500') or "H" (>7,500') with closed loop system used, and MLF spotted between plugs.

## Wellbore Diagram

Created:	04/22/19	By:		Well #:	60	St. Lse:	
Updated:		By:		API	30-025-03831		
Lease:	Lovington Paddock Unit			Unit Ltr.:	F	Section:	1
Field:	Lovington			TSHR/Rng:	17S-36E		
Surf. Loc.:	1980 FNL & 2310 FWL			Unit Ltr.:		Section:	
Bot. Loc.:				TSHR/Rng:			
County:	Lea	St.:	NM	Directions:	Lovington, NM		
Status:				Cheveno:	FA4978		

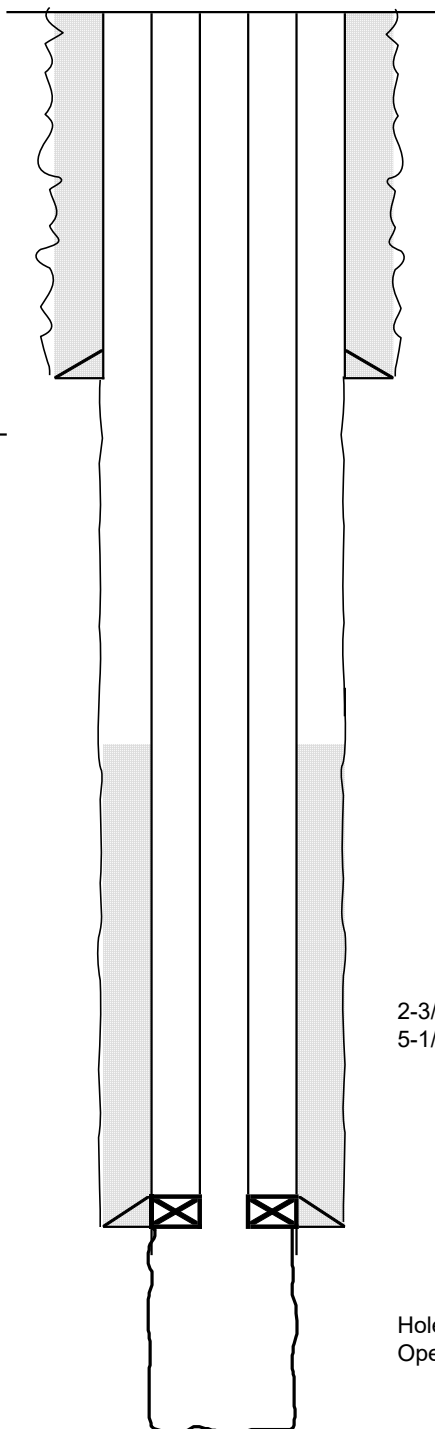
## Surface Casing

Size: 8-5/8"  
 Wt., Grd.: 28#  
 Depth: 2042'  
 Sxs Cmt: 1200  
 Circulate: Yes  
 TOC: Surface  
 Hole Size: 12-1/4"

KB: \_\_\_\_\_  
 DF: 3,828  
 GL: \_\_\_\_\_  
 Ini. Spud: 10/11/54  
 Ini. Comp.: 11/19/54

## Production Casing

Size: 5-1/2"  
 Wt., Grd.: 15.5#  
 Depth: 6061'  
 Sxs Cmt: 350  
 Circulate: No  
 TOC: 3841' by TS  
 Hole Size: 7-7/8"



2-3/8" IPC Inj Tbg  
 5-1/2" AD-1 PKR set @ 5983'

Hole Size: 4-3/4"  
 Open Hole: 6062' - 6290'

## Proposed Wellbore Diagram

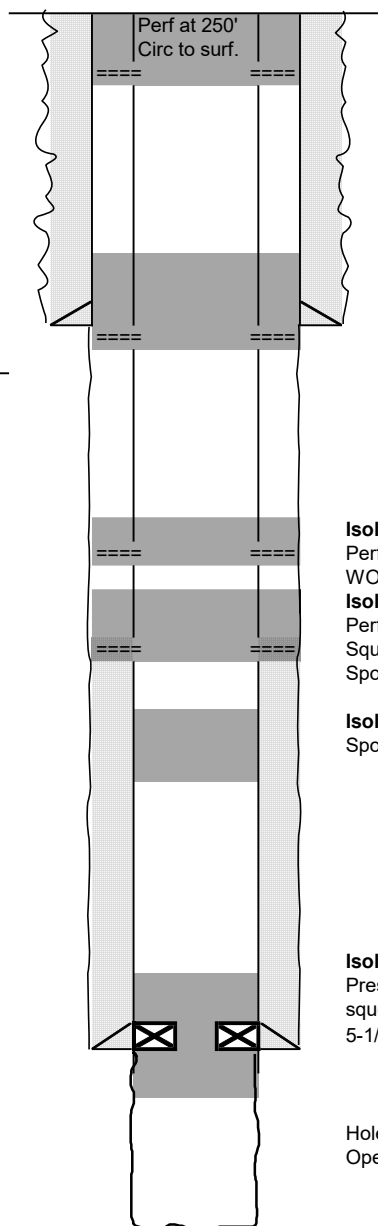
Created:	04/22/19	By:		Well #:	60	St. Lse:	
Updated:		By:		API		30-025-03831	
Lease:	Lovington Paddock Unit			Unit Ltr.:	F	Section:	1
Field:	Lovington			TSHR/Rng:		17S-36E	
Surf. Loc.:	1980 FNL & 2310 FWL			Unit Ltr.:		Section:	
Bot. Loc.:				TSHR/Rng:			
County:	Lea	St.:	NM	Directions:		Lovington, NM	
Status:				Chevno:		FA4978	

## Surface Casing

Size: 8-5/8"  
 Wt., Grd.: 28#  
 Depth: 2042'  
 Sxs Cmt: 1200  
 Circulate: Yes  
 TOC: Surface  
 Hole Size: 12-1/4"

## Production Casing

Size: 5-1/2"  
 Wt., Grd.: 15.5#  
 Depth: 6061'  
 Sxs Cmt: 350  
 Circulate: No  
 TOC: 3841' by TS  
 Hole Size: 7-7/8"



KB: \_\_\_\_\_  
 DF: 3,828  
 GL: \_\_\_\_\_  
 Ini. Spud: 10/11/54  
 Ini. Comp.: 11/19/54

**Isolate Salt, Rustler, 8-5/8" shoe**

Perforate at 2100'  
 Squeeze from 2100' to 1600'  
 WOC, tag, pressure test

**Isolate Seven Rivers**

Perforate at 3260'. Squeeze from 3260'  
 WOC, tag, pressure test

**Isolate Queen**

Perforate at 3864'  
 Squeeze cmt from 3864'; WOC, tag, pressure test.  
 Spot 25 sacks Class C if no injection

**Isolate San Andres, Grayburg**

Spot cement from 4581' to 4200'

**Isolate injection zone**

Pressure test tubing. If tbg and packer tests,  
 squeeze 25 sacks Class C below packer.  
 5-1/2" AD-1 PKR set @ 5983'

Hole Size: 4-3/4"  
 Open Hole: 6062' - 6290'

PBTD(est.): \_\_\_\_\_  
 TD: 6,290

**District I**  
1625 N. French Dr., Hobbs, NM 88240  
Phone:(575) 393-6161 Fax:(575) 393-0720  
**District II**  
811 S. First St., Artesia, NM 88210  
Phone:(575) 748-1283 Fax:(575) 748-9720  
**District III**  
1000 Rio Brazos Rd., Aztec, NM 87410  
Phone:(505) 334-6178 Fax:(505) 334-6170  
**District IV**  
1220 S. St Francis Dr., Santa Fe, NM 87505  
Phone:(505) 476-3470 Fax:(505) 476-3462

**State of New Mexico**  
**Energy, Minerals and Natural Resources**  
**Oil Conservation Division**  
**1220 S. St Francis Dr.**  
**Santa Fe, NM 87505**

COMMENTS

Action 168423

COMMENTS

Operator: CHEVRON U S A INC 6301 Deauville Blvd Midland, TX 79706	OGRID: 4323
	Action Number: 168423
	Action Type: [C-103] NOI Plug & Abandon (C-103F)

COMMENTS

Created By	Comment	Comment Date
plmartinez	DATA ENTRY PM.	12/20/2022



**District I**  
1625 N. French Dr., Hobbs, NM 88240  
Phone:(575) 393-6161 Fax:(575) 393-0720  
**District II**  
811 S. First St., Artesia, NM 88210  
Phone:(575) 748-1283 Fax:(575) 748-9720  
**District III**  
1000 Rio Brazos Rd., Aztec, NM 87410  
Phone:(505) 334-6178 Fax:(505) 334-6170  
**District IV**  
1220 S. St Francis Dr., Santa Fe, NM 87505  
Phone:(505) 476-3470 Fax:(505) 476-3462

State of New Mexico  
Energy, Minerals and Natural Resources  
Oil Conservation Division  
1220 S. St Francis Dr.  
Santa Fe, NM 87505

CONDITIONS

Action 168423

CONDITIONS

Operator: CHEVRON U S A INC 6301 Deauville Blvd Midland, TX 79706	OGRID: 4323
	Action Number: 168423
	Action Type: [C-103] NOI Plug & Abandon (C-103F)

CONDITIONS

Created By	Condition	Condition Date
kfortner	See attached COA	12/20/2022