

Well Name: DEBRA GEIGER	Well Location: T24N / R11W / SEC 4 / NWNW / 36.335922 / -107.999329	County or Parish/State: SAN JUAN / NM
Well Number: 1	Type of Well: OIL WELL	Allottee or Tribe Name:
Lease Number: NMNM36356	Unit or CA Name:	Unit or CA Number:
US Well Number: 3004528194	Well Status: Abandoned	Operator: DJR OPERATING LLC

Subsequent Report

Sundry ID: 2709379

Type of Submission: Subsequent Report

Date Sundry Submitted: 01/04/2023

Date Operation Actually Began: 12/30/2022

Type of Action: Plug and Abandonment

Time Sundry Submitted: 02:37

Actual Procedure: The subject well was Plugged & Abandoned on 12/30/2022 per the attached End of Well Report, As Plugged Wellbore Diagram, and Marker.

SR Attachments

Actual Procedure

00_EOWR_BLM_Submittal_20230104143736.pdf

Well Name: DEBRA GEIGER	Well Location: T24N / R11W / SEC 4 / NWNW / 36.335922 / -107.999329	County or Parish/State: SAN JUAN / NM
Well Number: 1	Type of Well: OIL WELL	Allottee or Tribe Name:
Lease Number: NMNM36356	Unit or CA Name:	Unit or CA Number:
US Well Number: 3004528194	Well Status: Abandoned	Operator: DJR OPERATING LLC

Operator

I certify that the foregoing is true and correct. Title 18 U.S.C. Section 1001 and Title 43 U.S.C. Section 1212, make it a crime for any person knowingly and willfully to make to any department or agency of the United States any false, fictitious or fraudulent statements or representations as to any matter within its jurisdiction. Electronic submission of Sundry Notices through this system satisfies regulations requiring a

Operator Electronic Signature: MARYA COLLARD

Signed on: JAN 04, 2023 02:37 PM

Name: DJR OPERATING LLC

Title: Regulatory Technician

Street Address: 1 ROAD 3263

City: AZTECState: NM

Phone: (505) 634-6722

Email address: MCOLLARD@DJRLLC.COM

Field

Representative Name:

Street Address:

City:State:Zip:

Phone:

Email address:

BLM Point of Contact

BLM POC Name: KENNETH G RENNICK

BLM POC Title: Petroleum Engineer

BLM POC Phone: 5055647742

BLM POC Email Address: krennick@blm.gov

Disposition: Accepted

Disposition Date: 01/04/2023

Signature: Kenneth Rennick

DJR Operating, LLC
P&A End of Well Report
Debra Geiger 1
API # 30-045-28194
SHL: SE/SE Unit P, Sec 32, T25N, R11W
BHL: NW/NW Unit D, Sec 4, T24N, R 11W
San Juan County, NM
Spud Date: 1-17-1991
Plug Date: 12-30-2022

12-6-2022:

MIRU rig and equipment. SITP = 0, SICP = 50, BH = 12. Unseat pump, hot oil rods and tubing.

12-7-2022:

SITP = 0, SICP = 10, BH = 12. Pull rods and pump.

12-8-2022:

SITP = N/A, SICP = Vac, BH = 4. NDWH, NU BOP. TOOH with 2 7/8" production string.

Release rig.

12-19-2022:

MIRU rig and equipment.

12-20-2022:

ND WH, NU BOP. SICP = 0, BH = 5. TIH with 2 3/8" workstring and tag sub to 5510'.

P&A Plug 1: Above liner perforations and portion of OH outside liner: Lead with 20 bbls water, then mix and spot blind plug of 110 sx from 5510'. Pull up hole. WOC.

12-21-2022:

TIH, tagged Plug 1 at 4757'. Load and roll hole. PT casing, did not test. TOOH.

RIH, perforate holes at 4735'. POOH.

Pump down casing, pressure to 950 psi, could not establish injection. SDFN.

12-22-2022:

RIH, run CBL from 4735' to surface. No cement behind liner from 4735' to top of liner. TOC in 9 5/8" casing at +/- 850'. POOH.

TIH with workstring and string mill through TOL to 4713'. TOOH.

TIH with 5 1/2" retainer to 4700'. Set retainer, load and roll hole, PT casing, did not test. Establish injection through retainer and outside liner, getting some returns through TOL and up 9 5/8" casing. Started to mix and pump cement for 2nd plug but cement truck had blockage, cleaned up, pulled up hole and SD for holiday WE.

12-27-2022:

SICP = 0, BH = 0. Sting into retainer. Establish injection.

P&A Plug 2: Outside liner and TOL: Mix and pump plug of 84 sx (30 sx outside liner, 4 sx below retainer, sting out and place 12 sx in 5 1/2" liner and 38 sx in 9 5/8" casing). WOC. Tagged Plug 2 at 4524'. Pull up to 3930'. PT casing, did not test.

P&A Plug 3: Mancos formation top: Mix and spot balanced plug of 123 sx from 3930'. Pull up to 2482'. WOC. SDFN.

12-28-2022:

TIH, tagged Plug 3 at 3636'. Pull up to 2017'. PT casing, did not test.

P&A Plug 4: Mesa Verde formation top: Mix and spot balanced plug of 76 sx from 2017'. Pull up hole. WOC.

TIH, tagged Plug 4 at 1846'. Pull up to 1601'. PT casing, good test.

P&A Plug 5: Chacra formation top: Mix and spot balanced plug of 76 sx from 1601' to 1400'. Pull up to 1251'.

P&A Plug 6: Pictured Cliffs formation top: Mix and spot balanced plug of 76 sx from 1251' to 1050'.

Pull up to 883'. SDFN.

12-29-2022:

P&A Plug 7: Fruitland formation top: Mix and spot balanced plug of 76 sx from 883' to 682'.

Pull up to 684' and reverse out. TOOH.

RIH and perforate holes at 640'. POOH.

Attempt to establish injection, pressured up, could not inject. Attempt to pump down BH, could not inject. Approval from BLM and NMOCD to spot inside plug. TIH to 684'.

P&A Plug 8: Kirtland and Ojo Alamo formation tops: Mix and spot balanced plug of 108 sx from 684' to 398'. Pull up and reverse out at 410'. TOOH. WOC. SDFN.

12-30-2022:

TIH, tagged Plug 8 at 407'. TOOH.

RIH and perforate holes at 385'. POOH.

Attempt to establish circulation, could not circulate. Attempt to pump down BH, could not inject. Approval from BLM and NMOCD to pump surface casing plug with 2 3/8" tubing from 407'.

P&A Plug 9: Surface casing shoe to surface: Mix and pump plug of 185 sx down tubing, cement returns at surface in 9 5/8" casing. TOOH and pump 13 sx down casing and out perforations.

Total of 198 sx. No circulation out BH. TOOH.

Cut off WH. TOC at 20' in surface casing and 6' in 9 5/8" casing. Install P&A marker, top off surface casing with poly pipe and top off cellar with total of 38 sx.

Release rig.

NOTE: All depths are listed as MD unless stated otherwise.

All cement used was Class G mixed at 15.8 ppg, yield 1.15 cuft/sx

Regulatory representative: Clayton Yazzie, BLM, and Monica Kuehling, NMOCD via phone.

GPS Coordinates: Lat; 36.35071 N, Long; 108.01886 W

DJR Operating, LLC
P&A Marker
Debra Geiger 1
API # 30-045-28194
SHL: SE/SE Unit P, Sec 32, T25N, R11W
BHL: NW/NW Unit D, Sec 4, T24N, R 11W
San Juan County, NM
Spud Date: 1-17-1991
Plug Date: 12-30-2022



End of Well Report
DJR Operating, LLC
Debra Geiger 1

API # 30-045-28194
 SE/SE, Unit P, Sec 32, T25N, R11W (SHL)
 NW/NW, Unit D, Sec 4, T24N, R11W (BHL)
 San Juan County, NM

GL 6485'
 KB 6498'
 Spud Date 1/17/1991

This is a Horizontal Well

SURF CSG

Hole size 17-1/2"
 Csg Size: 13-3/8"
 Wt: 54.5#
 Grade: K-55
 ID: 12.615"
 Depth 356'
 TOC: Surface
 25 bbl

FORMATION TOPS*

	MD	TVD	Inc deg
Nacimiento	Surface	Surface	
Ojo Alamo	506'	506'	0.4
Kirtland	602'	602'	0.1
Fruitland	808'	808'	0.2
Pictured Cliffs	1176'	1176'	0.5
Lewis	1349'	1349'	0.3
Chacra	1526'	1526'	0.4
Mesa Verde	1942'	1942'	0.03
Mancos	3843'	3769'	22.8
Liner Top	4599'	4450'	39
Gallup	4934'	4497'	61
Int Csg Shoe	5198'	4750'	79
Top of slotted Liner	5530'	4776'	85.5
Top of fish	5700'	4787'	88
Max Inc	6001'	4784'	95.6
TD	6098'	4780'	89.3

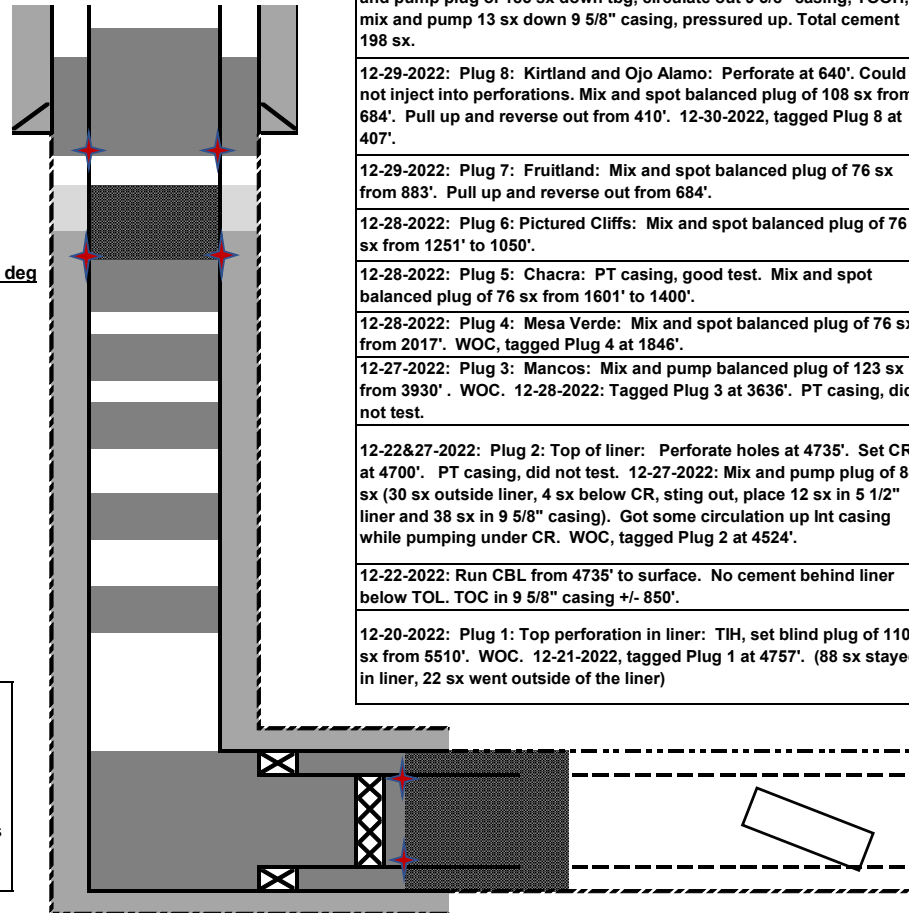
INT CSG

Hole size 12-1/4"
 Csg Size: 9-5/8"
 Wt: 36/40#
 Grade: K-55
 ID: 8.921"
 Depth 5198'
 Csg/Csg Ann ft³: 0.3765
 Csg/OH cap ft³: 0.3132
 TOC: Surface
 73 bbl

Liner

Hole size 8-3/4"
 Csg Size: 5-1/2"
 Wt: 17#
 Grade: K-55
 ID: 4.892"
 Regular Liner* 4599-5530' (MD)
 Slotted Liner* 5530'-6094' (MD)
 *Liner not cemented

*No logs. Estimated from Devon Neilsen 1 (True Vertical Depth Log 10/10/1990, 30-045-28195, direct offset well), and correlated with Debra Geiger directional survey. Deviation from vertical begins near 2193', so only Mancos and Gallup are impacted. These tops were interpolated from that survey.



12-30-2022: Cut off WH. TOC 20' in surface casing and 6' in 9 5/8" casing. Install P&A marker. Top off casing and cellar with 38 sx.

12-30-2022: Surface casing shoe to surface: Perforate at 385'. Mix and pump plug of 185 sx down tbq, circulate out 9 5/8" casing, TOO, mix and pump 13 sx down 9 5/8" casing, pressured up. Total cement 198 sx.

12-29-2022: Plug 8: Kirtland and Ojo Alamo: Perforate at 640'. Could not inject into perforations. Mix and spot balanced plug of 108 sx from 684'. Pull up and reverse out from 410'. 12-30-2022, tagged Plug 8 at 407'.

12-29-2022: Plug 7: Fruitland: Mix and spot balanced plug of 76 sx from 883'. Pull up and reverse out from 684'.

12-28-2022: Plug 6: Pictured Cliffs: Mix and spot balanced plug of 76 sx from 1251' to 1050'.

12-28-2022: Plug 5: Chacra: PT casing, good test. Mix and spot balanced plug of 76 sx from 1601' to 1400'.

12-28-2022: Plug 4: Mesa Verde: Mix and spot balanced plug of 76 sx from 2017'. WOC, tagged Plug 4 at 1846'.

12-27-2022: Plug 3: Mancos: Mix and pump balanced plug of 123 sx from 3930'. WOC. 12-28-2022: Tagged Plug 3 at 3636'. PT casing, did not test.

12-22&27-2022: Plug 2: Top of liner: Perforate holes at 4735'. Set CR at 4700'. PT casing, did not test. 12-27-2022: Mix and pump plug of 84 sx (30 sx outside liner, 4 sx below CR, sting out, place 12 sx in 5 1/2" liner and 38 sx in 9 5/8" casing). Got some circulation up Int casing while pumping under CR. WOC, tagged Plug 2 at 4524'.

12-22-2022: Run CBL from 4735' to surface. No cement behind liner below TOL. TOC in 9 5/8" casing +/- 850'.

12-20-2022: Plug 1: Top perforation in liner: TIH, set blind plug of 110 sx from 5510'. WOC. 12-21-2022, tagged Plug 1 at 4757'. (88 sx stayed in liner, 22 sx went outside of the liner)

NOTE: All plug depths are recorded as MD, unless otherwise noted.

All cement used was Class G mixed at 15.8 ppg, yield 1.15 cuft/sx

Regulatory representative: Clayton Yazzie, BLM and Monica Kuehling, NMOCD via phone

GPS Coordinates: Lat; 36.35071 N, Long; 108.01886 W

District I
1625 N. French Dr., Hobbs, NM 88240
Phone:(575) 393-6161 Fax:(575) 393-0720
District II
811 S. First St., Artesia, NM 88210
Phone:(575) 748-1283 Fax:(575) 748-9720
District III
1000 Rio Brazos Rd., Aztec, NM 87410
Phone:(505) 334-6178 Fax:(505) 334-6170
District IV
1220 S. St Francis Dr., Santa Fe, NM 87505
Phone:(505) 476-3470 Fax:(505) 476-3462

State of New Mexico
Energy, Minerals and Natural Resources
Oil Conservation Division
1220 S. St Francis Dr.
Santa Fe, NM 87505

COMMENTS

Action 173169

COMMENTS

Operator: DJR OPERATING, LLC 1 Road 3263 Aztec, NM 87410	OGRID: 371838
	Action Number: 173169
	Action Type: [C-103] Sub. Plugging (C-103P)

COMMENTS

Created By	Comment	Comment Date
mkuehling	did not follow string pressures after 12/27/2022 - well plugged 12/30/2022	1/10/2023

District I
1625 N. French Dr., Hobbs, NM 88240
Phone:(575) 393-6161 Fax:(575) 393-0720
District II
811 S. First St., Artesia, NM 88210
Phone:(575) 748-1283 Fax:(575) 748-9720
District III
1000 Rio Brazos Rd., Aztec, NM 87410
Phone:(505) 334-6178 Fax:(505) 334-6170
District IV
1220 S. St Francis Dr., Santa Fe, NM 87505
Phone:(505) 476-3470 Fax:(505) 476-3462

State of New Mexico
Energy, Minerals and Natural Resources
Oil Conservation Division
1220 S. St Francis Dr.
Santa Fe, NM 87505

CONDITIONS

Action 173169

CONDITIONS

Operator: DJR OPERATING, LLC 1 Road 3263 Aztec, NM 87410	OGRID: 371838
	Action Number: 173169
	Action Type: [C-103] Sub. Plugging (C-103P)

CONDITIONS

Created By	Condition	Condition Date
smcgrath	None	1/12/2023