

Office  
 District I – (575) 393-6161  
 1625 N. French Dr., Hobbs, NM 88240  
 District II – (575) 748-1283  
 811 S. First St., Artesia, NM 88210  
 District III – (505) 334-6178  
 1000 Rio Brazos Rd., Aztec, NM 87410  
 District IV – (505) 476-3460  
 1220 S. St. Francis Dr., Santa Fe, NM  
 87505

State of New Mexico  
 Energy, Minerals and Natural Resources

Form C-103  
 Revised July 18, 2013

OIL CONSERVATION DIVISION  
 1220 South St. Francis Dr.  
 Santa Fe, NM 87505

|                                                                                                     |
|-----------------------------------------------------------------------------------------------------|
| WELL API NO.<br>30-045-21143                                                                        |
| 5. Indicate Type of Lease<br>STATE <input type="checkbox"/> FEE <input checked="" type="checkbox"/> |
| 6. State Oil & Gas Lease No.<br>FEE                                                                 |
| 7. Lease Name or Unit Agreement Name<br>Larcher                                                     |
| 8. Well Number<br>2                                                                                 |
| 9. OGRID Number<br>372171                                                                           |
| 10. Pool name or Wildcat<br>Pictured Cliffs                                                         |
| 11. Elevation (Show whether DR, RKB, RT, GR, etc.)<br>5860' GL                                      |

SUNDRY NOTICES AND REPORTS ON WELLS  
 (DO NOT USE THIS FORM FOR PROPOSALS TO DRILL OR TO DEEPEN OR PLUG BACK TO A  
 DIFFERENT RESERVOIR. USE "APPLICATION FOR PERMIT" (FORM C-101) FOR SUCH  
 PROPOSALS.)

1. Type of Well: Oil Well ☐ Gas Well ☒ Other

2. Name of Operator  
 HILCORP ENERGY COMPANY

3. Address of Operator  
 382 Road 3100, Aztec, NM 87410

4. Well Location  
 Unit Letter G : 1720' feet from the North line and 1725' feet from the East line  
 Section 13 Township 31N Range 11W NMPM County San Juan

12. Check Appropriate Box to Indicate Nature of Notice, Report or Other Data

NOTICE OF INTENTION TO:

PERFORM REMEDIAL WORK ☐ PLUG AND ABANDON ☒  
 TEMPORARILY ABANDON ☐ CHANGE PLANS ☐  
 PULL OR ALTER CASING ☐ MULTIPLE COMPL ☐  
 DOWNHOLE COMMINGLE ☐  
 CLOSED-LOOP SYSTEM ☐  
 OTHER: ☐

SUBSEQUENT REPORT OF:

REMEDIAL WORK ☐ ALTERING CASING ☐  
 COMMENCE DRILLING OPNS. ☐ P AND A ☐  
 CASING/CEMENT JOB ☐  
 OTHER: ☐

13. Describe proposed or completed operations. (Clearly state all pertinent details, and give pertinent dates, including estimated date of starting any proposed work). SEE RULE 19.15.7.14 NMAC. For Multiple Completions: Attach wellbore diagram of proposed completion or recompletion.

Hilcorp Energy Company requests permission to P&A the subject well per the attached procedures, current and proposed wellbore schematics. A closed loop system will be used.

Spud Date:

Rig Release Date:

I hereby certify that the information above is true and complete to the best of my knowledge and belief.

SIGNATURE  TITLE Operations/Regulatory Technician – Sr. DATE 2/15/2023

Type or print name Amanda Walker E-mail address: mwalker@hilcorp.com PHONE: (346) 237-2177

**For State Use Only**

APPROVED BY: \_\_\_\_\_ TITLE \_\_\_\_\_ DATE \_\_\_\_\_

Conditions of Approval (if any):



**HILCORP ENERGY COMPANY**  
**Larcher 2**  
**NOTICE OF INTENT TO PERMANENTLY ABANDON**

API #:

3004521143

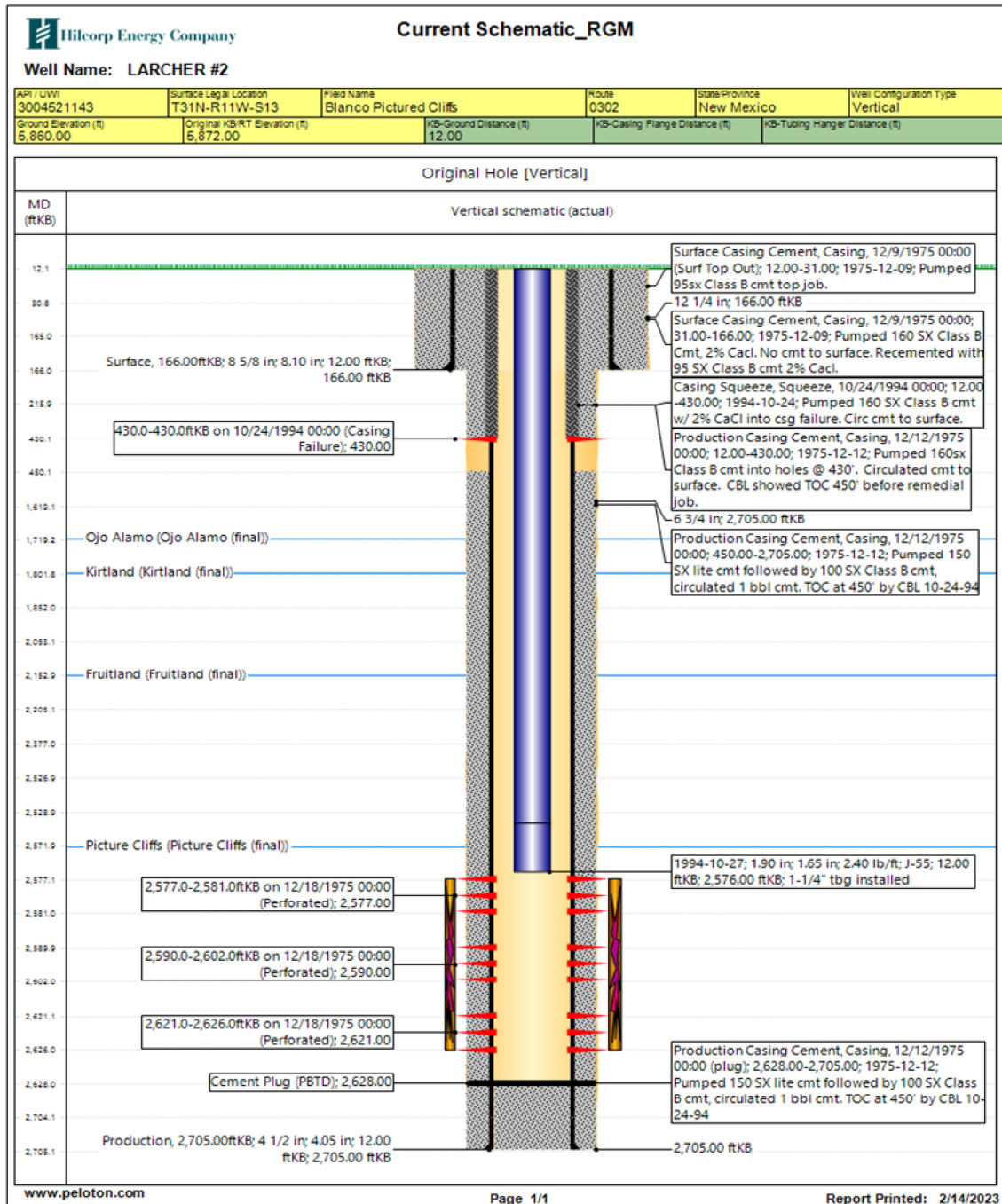
**JOB PROCEDURES**

- ☒ NMOCD **Contact OCD and BLM (where applicable) 24 hrs prior to MIRU. Comply with all NMOCD, BLM (where applicable), and HEC safety and environmental regulations.**
- ☒
1. MIRU service rig and associated equipment, record all pressures on wellbore.
  2. Load well, ND tree, NU BOPs and test.
  3. TOOH w/ 1-1/2" 2.4# EUE J55 tbg set at 2,576'.
  4. MU 4-1/2" 10.5# GR, clear csg to 2,540', POOH. MU 4-1/2" 10.5# CIBP and set @ 2,527' (PC Top Perf @ 2,577').
  5. RIH w/ WS to CIBP, tag in place.
  6. Load well with inhibited brine & circulate clean. Pressure test the csg to 560 psi. Monitor for 30 minutes.  
*All of the following plug designs are design based on cementing reports and CBL | 10/23/1994.*
  7. **Plug #1 | 2,377' - 2,527' (CIBP @ 2,527' | Pictured Cliffs Top Perf: 2,577')** Pump 12sx (2.5bbl) Class G cement and spot a 150' inside plug over the CIBP.
  8. **Plug #2 | 2,053' - 2,203' (Fruitland Top @ 2,153')** Pump 12sx (2.5bbl) Class G cement and spot a 150' inside plug over the Fruitland Top.
  9. **Plug #3 | 1,619' - 1,852' (Ojo Top @ 1,719' | Kirtland Top @ 1,802')** Pump 19sx (3.9bbl) Class G cement and spot a 233' inside plug over the Ojo & Kirtland Tops.  
*Plugs will be split & NMOCD will be notified if BH pressure is present.*
  10. *Reports from the casing remediation 10/24/1994 dictate cmt circulated to surface. Recommend inside plug & top job as needed.*  
**Plug #4 | 12' - 216' (Surface Shoe @ 166')** Pump 16sx (3.3bbl) Class G cement and spot 204' inside plug to cover the surface shoe from 216' to surface.
  11. LD tubing. ND BOP and cut off wellhead below surface casing flange as per NMOCD. Top off cement at surface as needed. Weld new P&A maker.



**HILCORP ENERGY COMPANY**  
**Larcher 2**  
**NOTICE OF INTENT TO PERMANENTLY ABANDON**

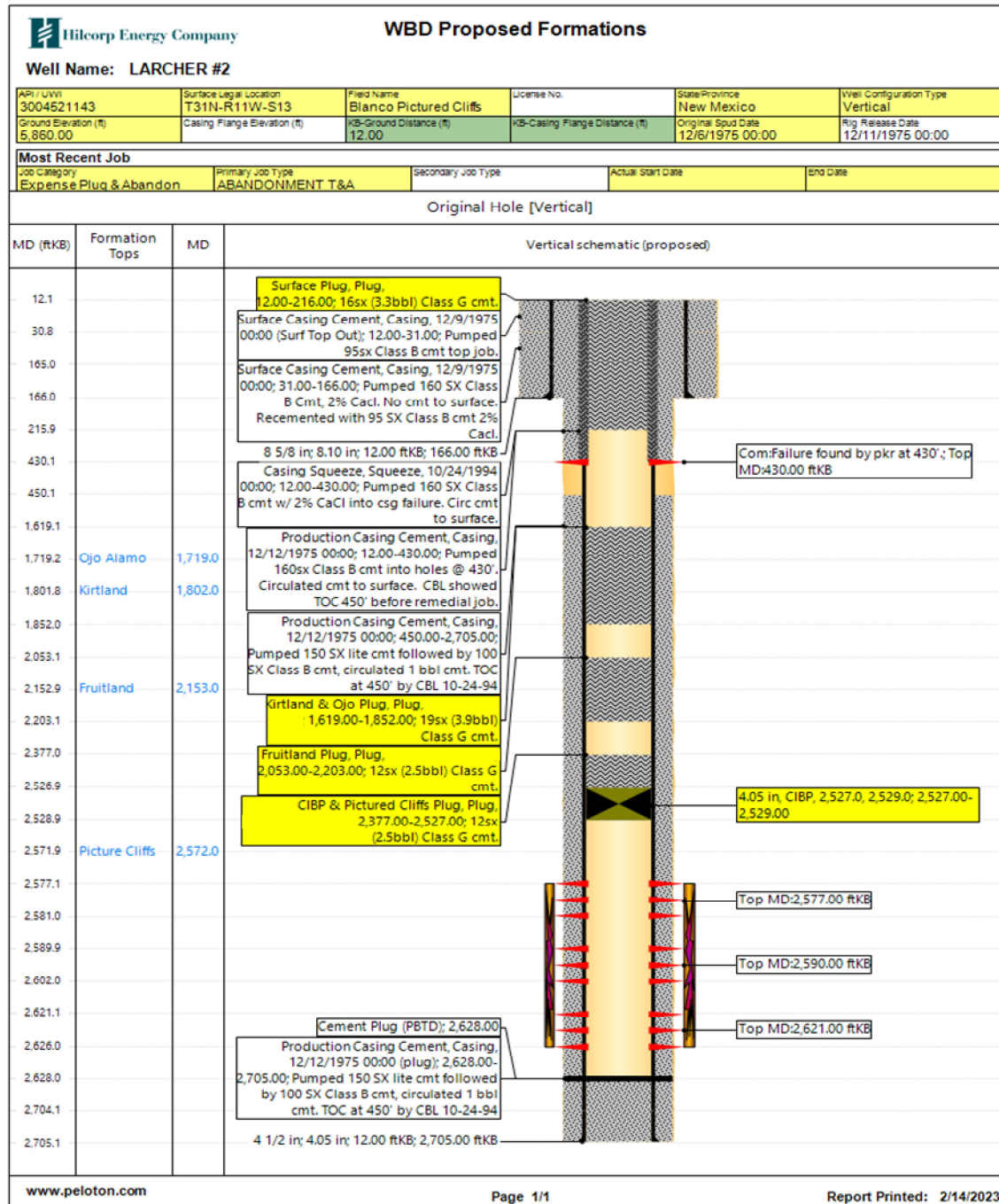
**Larcher 2 - CURRENT WELLBORE SCHEMATIC**





**HILCORP ENERGY COMPANY**  
**Larcher 2**  
**NOTICE OF INTENT TO PERMANENTLY ABANDON**

**Larcher 2 - PROPOSED P&A SCHEMATIC**



**District I**  
1625 N. French Dr., Hobbs, NM 88240  
Phone:(575) 393-6161 Fax:(575) 393-0720  
**District II**  
811 S. First St., Artesia, NM 88210  
Phone:(575) 748-1283 Fax:(575) 748-9720  
**District III**  
1000 Rio Brazos Rd., Aztec, NM 87410  
Phone:(505) 334-6178 Fax:(505) 334-6170  
**District IV**  
1220 S. St Francis Dr., Santa Fe, NM 87505  
Phone:(505) 476-3470 Fax:(505) 476-3462

State of New Mexico  
Energy, Minerals and Natural Resources  
Oil Conservation Division  
1220 S. St Francis Dr.  
Santa Fe, NM 87505

CONDITIONS  
  
Action 186411

CONDITIONS

|                                                                                |                                                     |
|--------------------------------------------------------------------------------|-----------------------------------------------------|
| Operator:<br>HILCORP ENERGY COMPANY<br>1111 Travis Street<br>Houston, TX 77002 | OGRID:<br>372171                                    |
|                                                                                | Action Number:<br>186411                            |
|                                                                                | Action Type:<br>[C-103] NOI Plug & Abandon (C-103F) |

CONDITIONS

| Created By | Condition                                                                       | Condition Date |
|------------|---------------------------------------------------------------------------------|----------------|
| kpickford  | Add a plug 755' - 900' to cover the Ojo top @ 805' and the Kirtland top @ 850'. | 2/22/2023      |
| kpickford  | Notify NMOCD 24 Hours Prior to beginning operations                             | 2/22/2023      |