

Well Name: KAUFMAN	Well Location: T31N / R13W / SEC 33 / SENE / 36.859741 / -108.203156	County or Parish/State: SAN JUAN / NM
Well Number: 1	Type of Well: CONVENTIONAL GAS WELL	Allottee or Tribe Name:
Lease Number: NMSF078463A	Unit or CA Name:	Unit or CA Number: NMNM73637
US Well Number: 3004510174	Well Status: Abandoned	Operator: HILCORP ENERGY COMPANY

Subsequent Report

Sundry ID: 2712782

Type of Submission: Subsequent Report	Type of Action: Plug and Abandonment
Date Sundry Submitted: 01/26/2023	Time Sundry Submitted: 12:01
Date Operation Actually Began: 12/21/2022	

Actual Procedure: The following well has been P&A'd as of 1/20/2023. Please see the attached plugging operations.

SR Attachments

Actual Procedure

30045101740000_Kaufman_1_SR_P_A_20230126120100.pdf

Well Name: KAUFMAN	Well Location: T31N / R13W / SEC 33 / SENE / 36.859741 / -108.203156	County or Parish/State: SAN JUAN / NM
Well Number: 1	Type of Well: CONVENTIONAL GAS WELL	Allottee or Tribe Name:
Lease Number: NMSF078463A	Unit or CA Name:	Unit or CA Number: NMNM73637
US Well Number: 3004510174	Well Status: Abandoned	Operator: HILCORP ENERGY COMPANY

Operator

I certify that the foregoing is true and correct. Title 18 U.S.C. Section 1001 and Title 43 U.S.C. Section 1212, make it a crime for any person knowingly and willfully to make to any department or agency of the United States any false, fictitious or fraudulent statements or representations as to any matter within its jurisdiction. Electronic submission of Sundry Notices through this system satisfies regulations requiring a

Operator Electronic Signature: AMANDA WALKER	Signed on: JAN 26, 2023 12:01 PM
Name: HILCORP ENERGY COMPANY	
Title: Operations/Regulatory Technician	
Street Address: 1111 TRAVIS ST.	
City: HOUSTON	State: TX
Phone: (346) 237-2177	
Email address: mwalker@hilcorp.com	

Field

Representative Name:		
Street Address:		
City:	State:	Zip:
Phone:		
Email address:		

BLM Point of Contact

BLM POC Name: KENNETH G RENNICK	BLM POC Title: Petroleum Engineer
BLM POC Phone: 5055647742	BLM POC Email Address: krennick@blm.gov
Disposition: Accepted	Disposition Date: 01/26/2023
Signature: Kenneth Rennick	

Kaufman 1
30-045-10174
NMSF078463A
SR P&A

12/21/2022: MIRU. CK WELL PRESSURES (SITP-240, SICP-40, SIBHP-0). ND WH. NU BOP, FT, GOOD TST. SDFN.

12/22/2022: CK WELL PRESSURES (SITP-0, SICP-0, SIBHP-0). WRK STUCK PIPE, LD 101.5 JTS. PU FISHING TOOLS TAG TOF @ 3286'. UNABLE TO ENGAGE FISH. SDF HOLIDAY.

12/27/2022: CK WELL PRESSURES (SITP-230, SICP-0, SIBHP-0). TOO H W/FISHING TOOLS. SDFN. EMAIL SENT TO MONICA/NMOCD AND KENNY AND RON/BLM AS FOLLOWS: Current: PU on tbg, parted @ +/- 3,285'. RIH w/ OS, tag up 3,286' – bent cut lip guide suggests csg failure. RIH w/ LIB to confirm csg failure – large impression on one side, looks like probable collapsed casing collar. Proposed: RIH w/ pkr, set @ 3,280' & sqz below to establish injection. POOH. RIH w/ CICR, set @ 3,280'. Attempt to get csg pressure test above retainer. Plug #1 | Sting into CICR, sqz 550sx (67bbl) Class III "Select" cmt below retainer. This is csg capacity to top perf. Run CBL to confirm TOC behind csg. Perf circ holes @ 3,235' for Cliff House plug as proposed. Plug well as per NOI. No bradenhead pressure has been observed. Initial SITP 240psi, SICP 40psi, SIBHP 0psi (opened BH, no flow). APPROVAL GIVEN TO PROCEED.

12/28/2022: CK WELL PRESSURES (SITP-255, SICP-0, SIBHP-0). SET PKR @ 3246'. EST INJ RATE @ 2.6 BBLS @ 1000 PSI. PT CSG T/550 PSI-PASS. UNSET PKR & POH. SDFN. EMAIL SENT TO MONICA/NMOCD AND RON CHAVE/BLM TO UPDATE PLUGGING PROGRESS: Completed: PU on tbg, parted @ +/- 3,285'. RIH w/ OS, tag up 3,286' – bent cut lip guide suggests csg failure. RIH w/ LIB to confirm csg failure – large impression on one side, looks like probable collapsed casing collar. Set pkr @ 3,246', established INJ rate of ~2.5bpm @ 1,000psi – good. Pressure tested backside to 700psi for 15min – csg with good integrity from 3,246' to surface. THUR, 12/29 Plan: RIH w/ CICR set @ 3,246'. Load hole as needed, run CBL from 3,246' to surface. SD, wait on cmt spread. FRI, 12/30 & Beyond Plan: RU Drake cement spread (needed for high cmt volume). Plug #1 | Sting into CICR, sqz 515sx (125bbl) Class III "Select" cmt below retainer. 5-1/2" casing volume minus tbg displacement from 3,246' – 6,162' (CICR to Top Perf) & 100% excess. Perf circ holes @ 3,235' for Cliff House plug as proposed and proceed with NOI as approved.

12/29/2022: CK WELL PRESSURES (SITP-0, SICP-230, SIBHP-0). SPOT IN WL. RUN CBL. PU CICR & RIH T/3246'. SDFN. EMAIL SENT TO MONICA KUEHLING/NMOCD AND RON CHAVEZ/BLM REQUESTING THE FOLLOWING UPDATES AFTER THE CBL Plug 1: Sqz 515sx Class III cement below CICR @ +/- 3246'. Plug 2: Cliff House: Inside/Outside Plug – perf 3235', set CICR 3185'. Plug 3: Chacra: Inside/Outside Plug – perf 2728', set CICR 2678'. Plug 4: Pictured Cliffs: Inside Plug. Plug 5: Fruitland: Inside/Outside Plug – perf 1000', set CICR 950'. Plug 6: Surface: Inside/Outside Plug – perf 245'. RECEIVED APPROVAL FROM RON/BLM AND MONICA/NMOCD TO PROCEED WITH PLUG 1.

12/30/2022: CK WELL PRESSURES (SITP-230, SICP-230, SIBHP-0). SET RETAINER @ 3246' EST INJ RATE 3 BBLS/MIN W/1000 PSI. PMP PLUG #1 F/3246' T/6162', 515 SXS, CLASS III CMT, 14.6 PPG, 1.37 YLD. UNSTING FROM RETAINER. TOO H. SDFN.

1/3/2023: CK WELL PRESSURES (SITP-0, SICP-0, SIBHP-0). LOAD HOLE & PT CSG T/550 W/FRED BRANDENBURG/BLM ONSITE REP. RU WL RIH & PERF @ 3235'. POH. LOAD HOLE & ATTEMPT TO EST INJ RATE, UNABLE TO GET INJ. PU TAG SUB & TIH TO TAG @ 3158'. SDFN

Kaufman 1
30-045-10174
NMSF078463A
SR P&A

1/5/2023: CK WELL PRESSURES (SITP-0, SICP-0, SIBHP-0). EST CIRC. PMP PLUG #2 F/3187 T/3008, 15 SXS, CLASS 2/5 CMT, 15 PPG, 1.29 YIELD, 6.041 GAL/SX. TOH W/35 STANDS. WOC. TIH TAG TOC @ 3051'. RIH & PERF @ 2728'. PU CICR & SET @ 2678'. SDFN.

1/6/2023: CK WELL PRESSURES (SITP-400, SICP-0, SIBHP-0). EST INJ 1 BPM @ 900 PSI, BATCH MIX CEMENT, PUMP PLUG #3 F/ 2728-2578' PUMP 32 SXS BELOW RETAINER UNSTING SPOT 11 SXS ON TOP OF RETAINER. CLASS 2/5 CMT, 15 PPG, 1.29 YIELD, 6.041 GAL/SX. LD 32 JTS. PUMP PLUG #4 F/ 1623-1473, 16 SXS, CLASS 2/5 CMT, 15 PPG, 1.29 YIELD, 6.041 GAL/SX. LD 20 JTS. LD RETAINER STINER. RIH & PERF @ 1000'. TIH W/CICR & SET @ 950'. EST INJ 1 BPM @ 900 PSI, BATCH MIX CEMENT, PUMP PLUG #5 1000-850 PUMP 32 SXS BELOW RETAINER UNSTING SPOT 11 SXS ON TOP OF RETAINER. CLASS 2/5 CMT, 15 PPG, 1.29 YIELD, 6.041 GAL/SX. RIH W/PERF @ 245'. DIG OUT BRADENHEAD VALVE & INSTALL 2" HAMMER UNION, ESTABLISH CIRCULATION PUMP PLUG #6 F/ 245-0 INSIDE/OUTSIDE PLUG, 76 SXS, CLASS 2/5 CMT, 15 PPG, 1.29 YIELD, 6.041 GAL/SX. ND BOPE. EMAIL SENT TO MONICA KUEHLING/NMOCD AND FRED BRANDENBURG/BLM TO UPDATE ON STATUS OF PLUGGING OPERATIONS: 1/6: Pumped surface cement job, moved rig off location. Water on location kept us from being able to cut off wellhead and could not get ball valve back on BH. 1/9: AOL, appeared to have intermittent bubbles coming from wellhead below water level in cellar. Pumped out water and was likely coming from BH. Crew installed riser, 2" ball valve, gauge. 1/10: Gauge on BH showed ~60psi. Bled off in <2sec. Appeared it was not flowing, but if finger was placed on needle valve and removed, gas release was heard. SI valve & well built ~20psi in 30minutes. Left BH open overnight to see if small pocket of gas at surface. 1/11: Call Monica to inform NMOCD of situation, discuss path forward. Decide to SI well for 24hrs and take reading following day. 1/12: AOL, digital gauge reads 2.6psi. Discuss with Monica, trapped gas has been bled off, not building pressure. OK'd to move forward with cutting WH & top job as needed. Note Initial SIPs: SITP 230psi, SICP 230psi, SIBHP 0psi – no BH pressure was observed throughout job. Casing pressure tested after zone was plugged back.

1/20/2023: CO CELLAR BELOW WH. CUT OFF WH, INSTALL MARKER. TOP OFF CSG & CELLAR W/25 SXS TYPE 2/5, 1.29 YLD. RECEIVED NOTIFICATION FROM MONICA KUEHLING/NMOCD THAT THE BH PRESSURE ISSUE HAS BEEN RESOLVED AND APPROVAL GIVEN TO PROCEED WITH PLUGGING.

FRED BRANDENBURG/BLM ONISTE REP TO WITNESS PLUGGING OPERATIONS

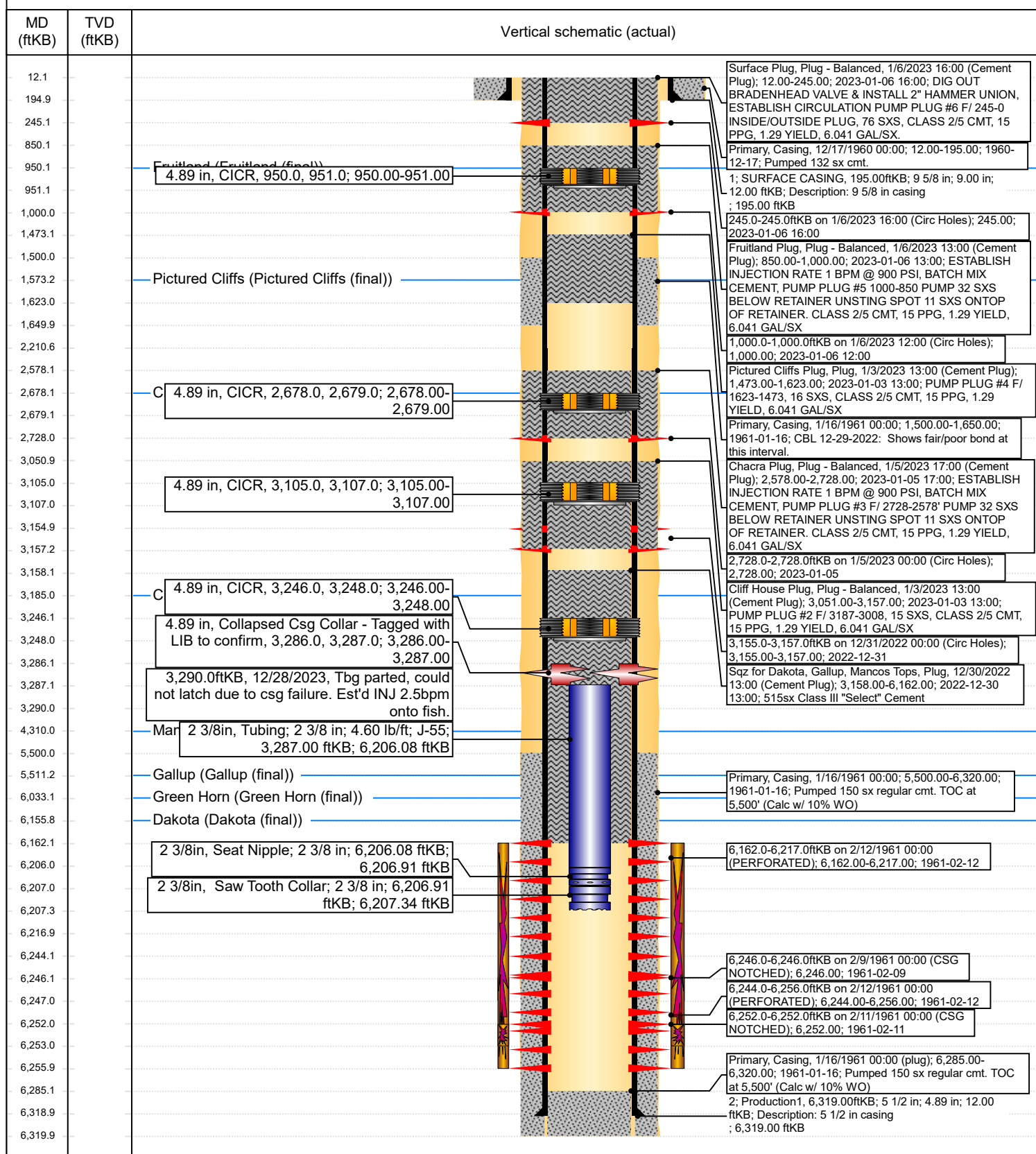


Current Schematic - Version 3

Well Name: KAUFMAN 001

API / UWI 3004510174	Surface Legal Location H-33-31N-13W	Field Name BASIN	Route 0205	State/Province NEW MEXICO	Well Configuration Type Vertical
Ground Elevation (ft) 5,545.00	Original KB/RT Elevation (ft)	KB-Ground Distance (ft)	KB-Casing Flange Distance (ft)	KB-Tubing Hanger Distance (ft)	

Original Hole [Vertical]



District I
1625 N. French Dr., Hobbs, NM 88240
Phone:(575) 393-6161 Fax:(575) 393-0720
District II
811 S. First St., Artesia, NM 88210
Phone:(575) 748-1283 Fax:(575) 748-9720
District III
1000 Rio Brazos Rd., Aztec, NM 87410
Phone:(505) 334-6178 Fax:(505) 334-6170
District IV
1220 S. St Francis Dr., Santa Fe, NM 87505
Phone:(505) 476-3470 Fax:(505) 476-3462

State of New Mexico
Energy, Minerals and Natural Resources
Oil Conservation Division
1220 S. St Francis Dr.
Santa Fe, NM 87505

CONDITIONS

Action 179942

CONDITIONS

Operator: HILCORP ENERGY COMPANY 1111 Travis Street Houston, TX 77002	OGRID: 372171
	Action Number: 179942
	Action Type: [C-103] Sub. Plugging (C-103P)

CONDITIONS

Created By	Condition	Condition Date
mkuehling	well plugged 1/20/2023	2/20/2023