

Submit 1 Copy To Appropriate District

Office

District I – (575) 393-6161
1625 N. French Dr., Hobbs, NM 88240
District II – (575) 748-1283
811 S. First St., Artesia, NM 88210
District III – (505) 334-6178
1000 Rio Brazos Rd., Aztec, NM 87410
District IV – (505) 476-3460
1220 S. St. Francis Dr., Santa Fe, NM
87505

State of New Mexico
Energy, Minerals and Natural Resources

Form C-103

Revised August 1, 2011

OIL CONSERVATION DIVISION
1220 South St. Francis Dr.
Santa Fe, NM 87505

SUNDRY NOTICES AND REPORTS ON WELLS (DO NOT USE THIS FORM FOR PROPOSALS TO DRILL OR TO DEEPEN OR PLUG BACK TO A DIFFERENT RESERVOIR. USE "APPLICATION FOR PERMIT" (FORM C-101) FOR SUCH PROPOSALS.)		WELL API NO. 30-025-38576 and 30-025-42139
1. Type of Well: Oil Well <input type="checkbox"/> Gas Well <input checked="" type="checkbox"/> Other		5. Indicate Type of Lease STATE <input checked="" type="checkbox"/> FEE <input type="checkbox"/>
2. Name of Operator DCP Midstream LP		6. State Oil & Gas Lease No. V07530-0001
3. Address of Operator 370 17 th Street, Suite 2500, Denver CO 80202		7. Lease Name or Unit Agreement Name Linam AGI
4. Well Location Unit Letter K; 1980 feet from the South line and 1980 feet from the West line Section 30 Township 18S Range 37E NMPM County Lea		8. Wells Number 1 and 2
11. Elevation (Show whether DR, RKB, RT, GR, etc.) 3736 GR		9. OGRID Number 36785
10. Pool name or Wildcat Wildcat		

12. Check Appropriate Box to Indicate Nature of Notice, Report or Other Data

NOTICE OF INTENTION TO:		SUBSEQUENT REPORT OF:	
PERFORM REMEDIAL WORK <input type="checkbox"/>	PLUG AND ABANDON <input type="checkbox"/>	REMEDIAL WORK <input type="checkbox"/>	ALTERING CASING <input type="checkbox"/>
TEMPORARILY ABANDON <input type="checkbox"/>	CHANGE PLANS <input type="checkbox"/>	COMMENCE DRILLING OPNS. <input type="checkbox"/>	P AND A <input type="checkbox"/>
PULL OR ALTER CASING <input type="checkbox"/>	MULTIPLE COMPL <input type="checkbox"/>	CASING/CEMENT JOB <input type="checkbox"/>	
DOWNHOLE COMMINGLE <input type="checkbox"/>			
OTHER: <input type="checkbox"/>		OTHER: Monthly Report pursuant to Workover C-103 <input checked="" type="checkbox"/>	

13. Describe proposed or completed operations. (Clearly state all pertinent details, and give pertinent dates, including estimated date of starting any proposed work). SEE RULE 19.15.7.14 NMAC. For Multiple Completions: Attach wellbore diagram of proposed completion or recompletion.


Report for the Month ending January 31, 2023 Pursuant to Workover C-103 for Linam AGI #1 and AGI #2

This is the 129th monthly submittal of data as agreed to between DCP and OCD relative to injection pressure, TAG temperature and casing annulus pressure and bottom hole data for Linam AGI #1. Since the data for both wells provide the best overall picture of the performance of the AGI system, the data for both wells are analyzed and presented herein even though that analysis is required only on a quarterly basis for AGI #2. Both wells will have MIT and BH tests performed next month and we anticipate switching flow to AGI#2 in February.

All flow this month continued to be directed to AGI #1. AGI #2 was not used at all this month and had no flow directed to it. Injection parameters being monitored for AGI #1 were as follows (Figures 1, 2, 3, 4): Average Injection Rate 186,556 scf/hr, Average TAG Injection Pressure: 1,662 psig, Average TAG Temperature: 106 °F, Average Annulus Pressure: 53 psig, Average Pressure Differential: 1,609 psig. Bottom hole (BH) sensors provided the average BH pressure for the entire period of 4,539 psig and BH temperature of 133°F (Figures 8 and 9), one degree lower than last month. The BH pressure remained the same as last month, flattening the trend with continued use of AGI #1, which began on February 1, 2022. AGI #1 continued to be used exclusively this month (see Figures 5, 6, 7).

The recorded injection parameters for AGI #2 for the month were: Average Injection Rate 0 scf/hr (AGI #2 was not used this month), Average Injection Pressure: 1,294 psig, Average TAG Temperature: 62 °F, Average Annulus Pressure: 179 psig, Average Pressure Differential: 1,115 psig. All the acid gas flow had been to AGI #2 since 3/1/2021 and was switched to AGI #1 on 2/1/2022 to assure the continued operational readiness of both wells. Bottom hole sensors in AGI #2 are not operating because they were damaged in a lightning strike shortly after AGI #2 was commissioned, however, because the injection zones for AGI #1 and AGI #2 are only about 450 feet apart, the bottom hole readings for AGI #1 are reflective of the general reservoir conditions for both wells. DCP has officially requested from OCD approval to implement a strategy for eventual replacement of the bottom hole sensors in AGI #2 and is currently awaiting approval. With the switchover to AGI #1 on 2/1/2022, we observed the anticipated rise in BHP and decrease in BHT at AGI #1 after injection to that well was reestablished and values are now generally stable.

The Linam AGI #1 and AGI #2 wells are serving as a safe, effective and environmentally friendly system to dispose of, and permanently sequester, Class II wastes consisting of H₂S and CO₂. The two wells provide the required redundancy to the plant that allows for operation with disposal to either or both wells. I hereby certify that the information above is true and complete to the best of my knowledge and belief.

SIGNATURE  TITLE Consultant to DCP Midstream/ Geolex, Inc. DATE 2/7/2023 Type or print name
Alberto A. Gutierrez, RG E-mail address: aag@geolex.com PHONE: 505-842-8000

For State Use Only

APPROVED BY: _____ TITLE _____ DATE _____

Conditions of Approval (if any): _____

Figure #1: Linam AGI#1 and #2 Combined TAG Injection Flow Rate

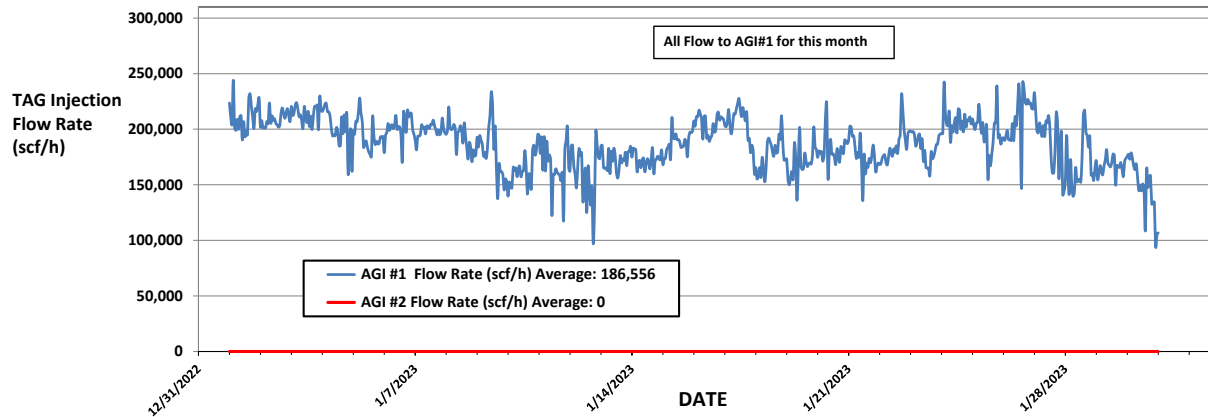


Figure #2: Linam AGI #1 Surface TAG Injection Pressure and Annular Pressure

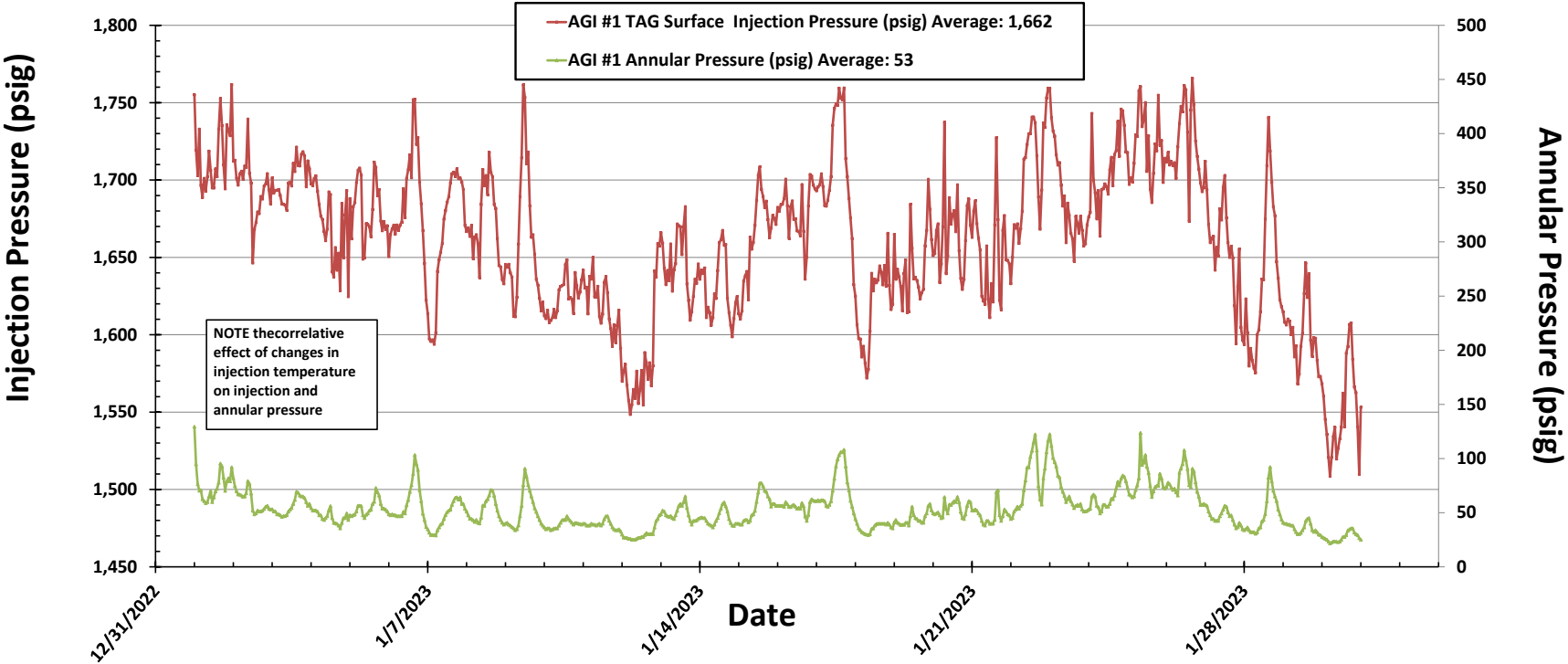


Figure #3: Linam AGI #1 TAG Injection Pressure, Casing Annulus Pressure and TAG Injection Temperature

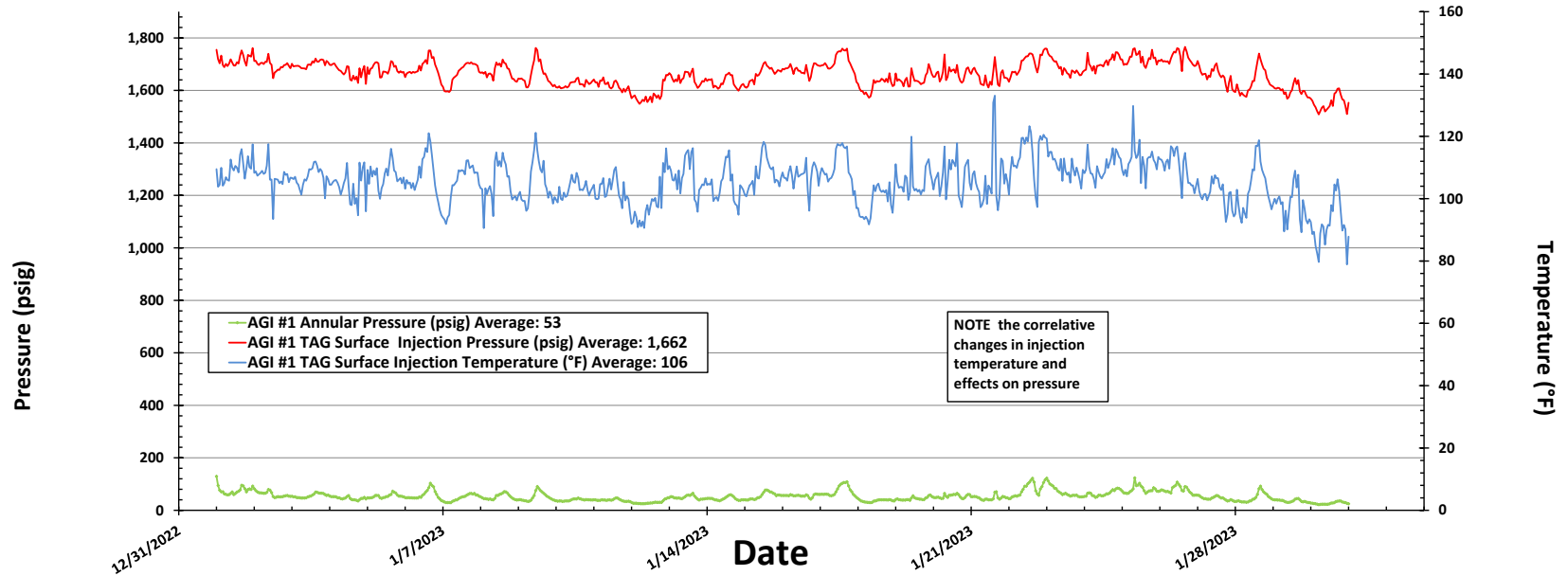


Figure #4: Linam AGI #1 TAG Injection Pressure and Casing Annular Pressure Differential (psig)

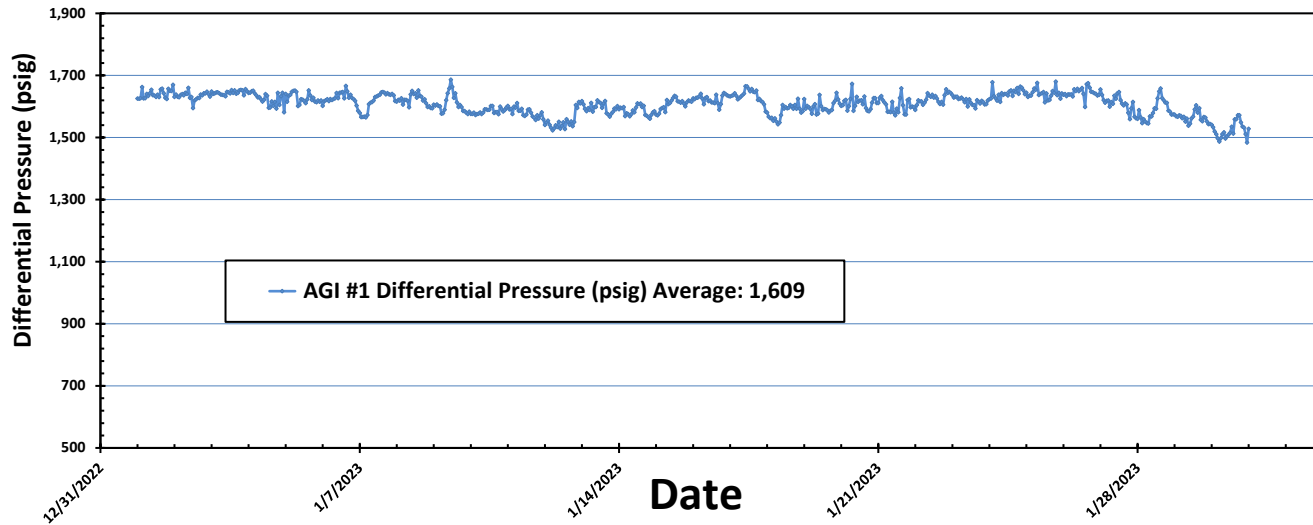


Figure #5: Linam AGI #2 Injection Pressure, Rate and Casing Annulus Pressure

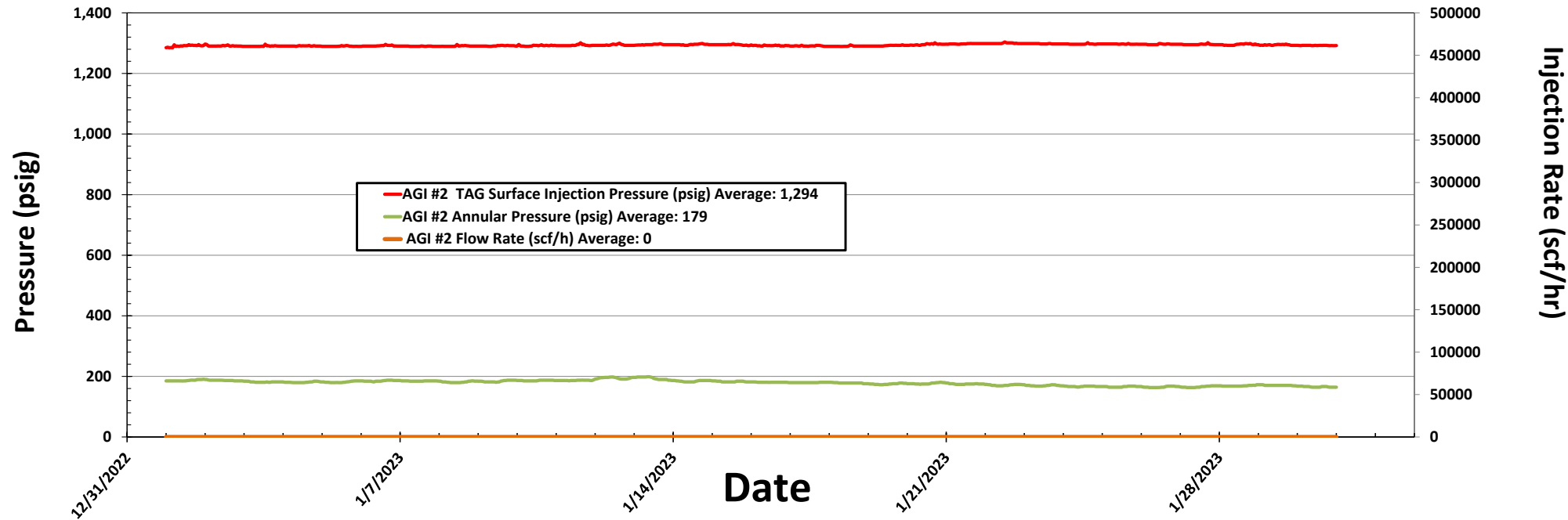


Figure #6: Linam AGI #2 TAG Injection Pressure, Casing Annulus Pressure and TAG Injection Temperature

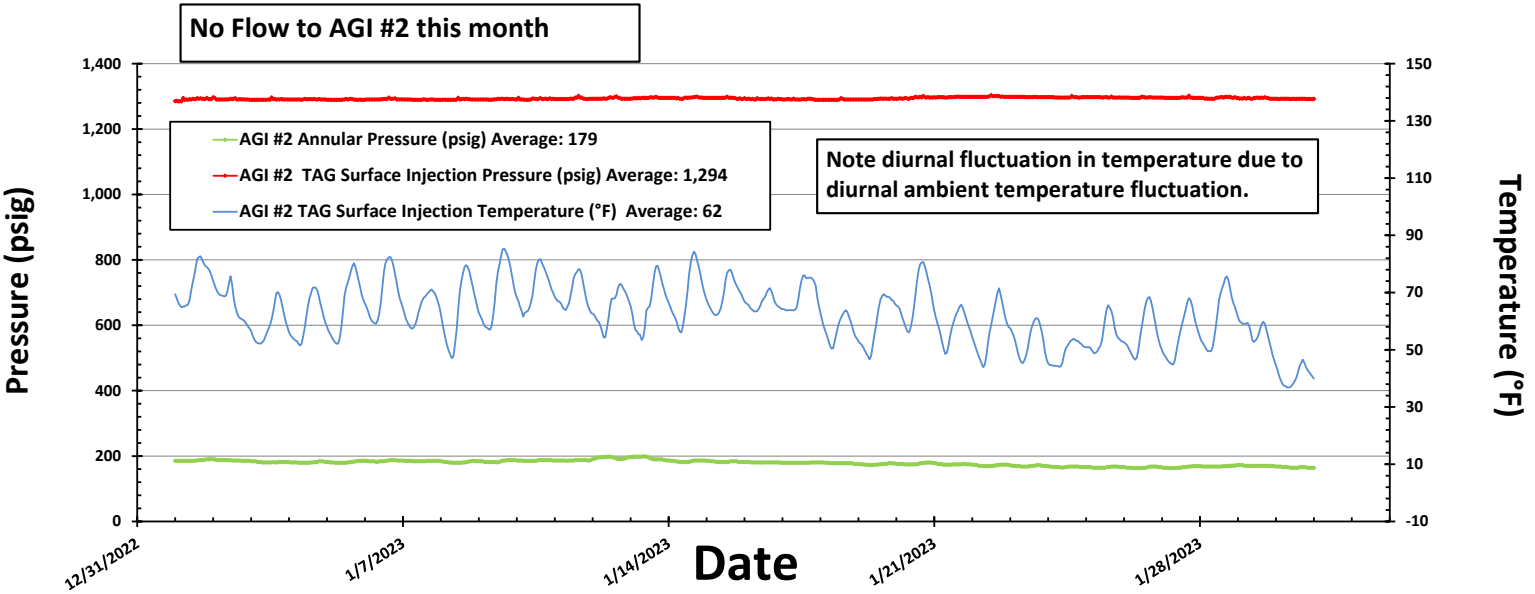


FIGURE #7: LINAM AGI #2 TAG INJECTION PRESSURE AND CASING ANNULAR PRESSURE DIFFERENTIAL (PSIG)

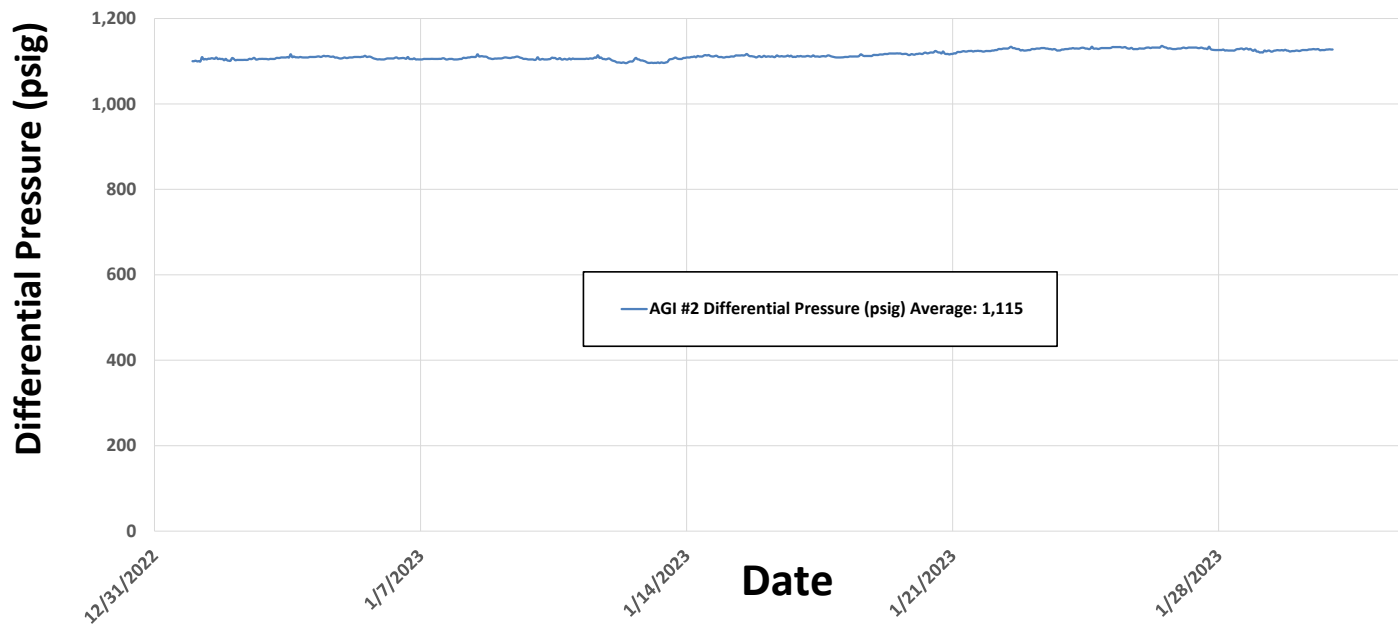


Figure #8: Linam AGI #1 Bottom Hole Pressure and Temperature

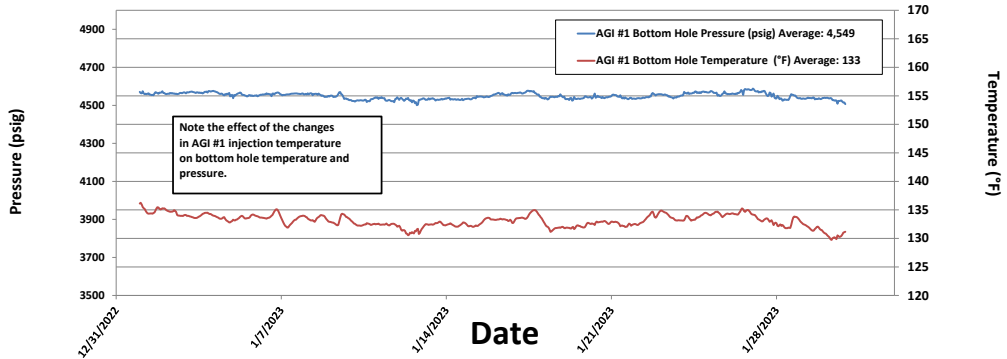
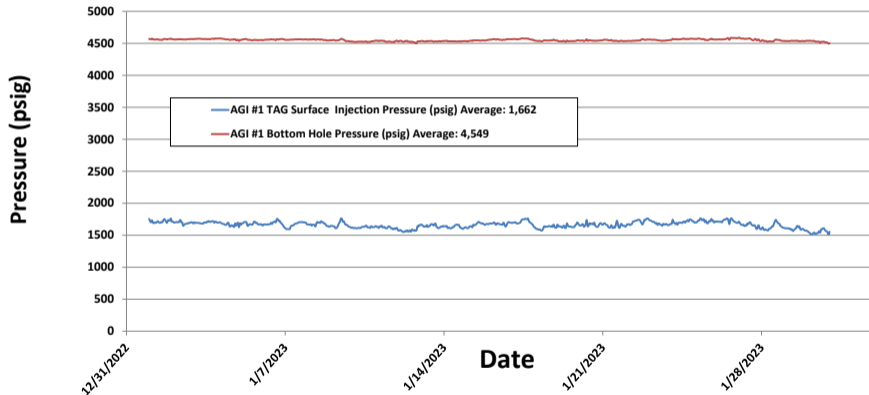


Figure 9: Linam AGI #1 Surface Injection Pressure and Bottom Hole Pressure



District I
1625 N. French Dr., Hobbs, NM 88240
Phone:(575) 393-6161 Fax:(575) 393-0720
District II
811 S. First St., Artesia, NM 88210
Phone:(575) 748-1283 Fax:(575) 748-9720
District III
1000 Rio Brazos Rd., Aztec, NM 87410
Phone:(505) 334-6178 Fax:(505) 334-6170
District IV
1220 S. St Francis Dr., Santa Fe, NM 87505
Phone:(505) 476-3470 Fax:(505) 476-3462

State of New Mexico
Energy, Minerals and Natural Resources
Oil Conservation Division
1220 S. St Francis Dr.
Santa Fe, NM 87505

CONDITIONS

Action 192492

CONDITIONS

Operator: DCP OPERATING COMPANY, LP 6900 E. Layton Ave Denver, CO 80237	OGRID: 36785
	Action Number: 192492
	Action Type: [C-103] Sub. General Sundry (C-103Z)

CONDITIONS

Created By	Condition	Condition Date
mgebremichael	None	3/6/2023