

<b>Well Name:</b> POKER LAKE UNIT 20-8 BD	<b>Well Location:</b> T25S / R30E / SEC 20 / NESW /	<b>County or Parish/State:</b>
<b>Well Number:</b> 162H	<b>Type of Well:</b> CONVENTIONAL GAS WELL	<b>Allottee or Tribe Name:</b>
<b>Lease Number:</b> NMLC64894	<b>Unit or CA Name:</b>	<b>Unit or CA Number:</b>
<b>US Well Number:</b> 3001553243	<b>Well Status:</b> Approved Application for Permit to Drill	<b>Operator:</b> XTO PERMIAN OPERATING LLC

Notice of Intent

**Sundry ID:** 2713493

**Type of Submission:** Notice of Intent

**Type of Action:** APD Change

**Date Sundry Submitted:** 02/01/2023

**Time Sundry Submitted:** 08:57

**Date proposed operation will begin:** 02/15/2023

**Procedure Description:** \*\*Surface Location Move, Bottomhole Location Change, Cement Changes XTO Permian Operating, LLC requests permission to make the following changes to the original APD: No Additional Surface Disturbance Change SHL fr/1378'FSL & 1933'FWL to 1528'FSL & 1934'FWL Total SHL Move: 355150'North & 1'West SHL change requested to optimize well pad layout, drilling efficiencies, and for safety purposes. Bottom Hole/Take Point Changes fr/2600'FSL & 1700'FWL to 2609'FSL & 2310'FWL Cement design per the attached drilling program. Attachments: C102 Drilling Program Directional Plan

NOI Attachments

**Procedure Description**

PLU\_20\_8\_Brushy\_Draw\_162H\_Attachments\_20230201052027.pdf

<b>Well Name:</b> POKER LAKE UNIT 20-8 BD	<b>Well Location:</b> T25S / R30E / SEC 20 / NESW /	<b>County or Parish/State:</b>
<b>Well Number:</b> 162H	<b>Type of Well:</b> CONVENTIONAL GAS WELL	<b>Allottee or Tribe Name:</b>
<b>Lease Number:</b> NMLC64894	<b>Unit or CA Name:</b>	<b>Unit or CA Number:</b>
<b>US Well Number:</b> 3001553243	<b>Well Status:</b> Approved Application for Permit to Drill	<b>Operator:</b> XTO PERMIAN OPERATING LLC

Conditions of Approval

Additional

Sec\_20\_25S\_30E\_NMP\_Sundry\_2713493\_Poker\_Lake\_Unit\_20\_8\_BD\_162H\_Eddy\_NMLC064894A\_XTO\_COAs\_20230224162719.pdf

Operator

I certify that the foregoing is true and correct. Title 18 U.S.C. Section 1001 and Title 43 U.S.C. Section 1212, make it a crime for any person knowingly and willfully to make to any department or agency of the United States any false, fictitious or fraudulent statements or representations as to any matter within its jurisdiction. Electronic submission of Sundry Notices through this system satisfies regulations requiring a

<b>Operator Electronic Signature:</b> STEPHANIE RABADUE	<b>Signed on:</b> FEB 01, 2023 05:20 AM
<b>Name:</b> XTO PERMIAN OPERATING LLC	
<b>Title:</b> Regulatory Coordinator	
<b>Street Address:</b> 500 W. Illinois St, Ste 100	
<b>City:</b> Midland	<b>State:</b> TX
<b>Phone:</b> (432) 620-6714	
<b>Email address:</b> STEPHANIE.RABADUE@EXXONMOBIL.COM	

Field

<b>Representative Name:</b>		
<b>Street Address:</b>		
<b>City:</b>	<b>State:</b>	<b>Zip:</b>
<b>Phone:</b>		
<b>Email address:</b>		

BLM Point of Contact

<b>BLM POC Name:</b> CHRISTOPHER WALLS	<b>BLM POC Title:</b> Petroleum Engineer
<b>BLM POC Phone:</b> 5752342234	<b>BLM POC Email Address:</b> cwalls@blm.gov
<b>Disposition:</b> Approved	<b>Disposition Date:</b> 02/28/2023
<b>Signature:</b> Chris Walls	

District I  
1625 N. French Dr., Hobbs, NM 88240  
Phone: (575) 393-6161 Fax: (575) 393-0720

District II  
811 S. First St., Artesia, NM 88210  
Phone: (575) 748-1283 Fax: (575) 748-9720

District III  
1000 Rio Brazos Road, Aztec, NM 87410  
Phone: (505) 334-6178 Fax: (505) 334-6170

District IV  
1220 S. St. Francis Dr., Santa Fe, NM 87505  
Phone: (505) 476-3460 Fax: (505) 476-3462

State of New Mexico  
Energy, Minerals & Natural Resources Department  
OIL CONSERVATION DIVISION  
1220 South St. Francis Dr.  
Santa Fe, NM 87505

Form C-102  
Revised August 1, 2011  
Submit one copy to appropriate  
District Office  
☐ AMENDED REPORT

## WELL LOCATION AND ACREAGE DEDICATION PLAT

<sup>1</sup> API Number <b>30-015- 53243</b>	<sup>2</sup> Pool Code <b>98220</b>	<sup>3</sup> Pool Name <b>Purple Sage; Wolfcamp</b>
<sup>4</sup> Property Code	<sup>5</sup> Property Name <b>POKER LAKE UNIT 20-8 BD</b>	<sup>6</sup> Well Number <b>162H</b>
<sup>7</sup> OGRID No. <b>373075</b>	<sup>8</sup> Operator Name <b>XTO PERMIAN OPERATING, LLC.</b>	<sup>9</sup> Elevation <b>3,170'</b>

<sup>10</sup> Surface Location

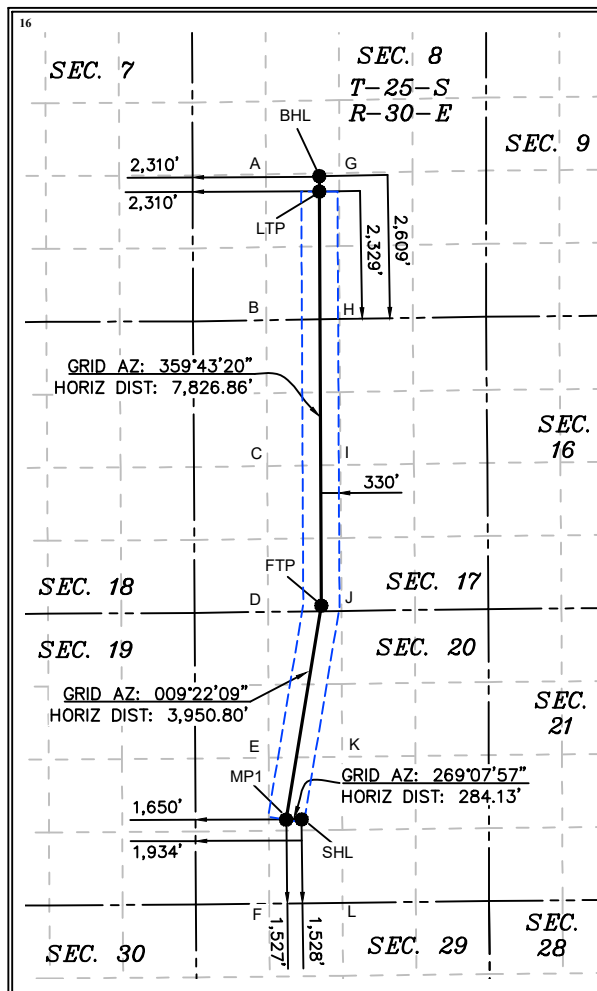
UL or lot no.	Section	Township	Range	Lot Idn	Feet from the	North/South line	Feet from the	East/West line	County
<b>K</b>	<b>20</b>	<b>25 S</b>	<b>30 E</b>		<b>1,528</b>	<b>SOUTH</b>	<b>1,934</b>	<b>WEST</b>	<b>EDDY</b>

<sup>11</sup> Bottom Hole Location If Different From Surface

UL or lot no.	Section	Township	Range	Lot Idn	Feet from the	North/South line	Feet from the	East/West line	County
<b>K</b>	<b>8</b>	<b>25 S</b>	<b>30 E</b>		<b>2,609</b>	<b>SOUTH</b>	<b>2,310</b>	<b>WEST</b>	<b>EDDY</b>

<sup>12</sup> Dedicated Acres <b>720</b>	<sup>13</sup> Joint or Infill	<sup>14</sup> Consolidation Code	<sup>15</sup> Order No.
---	-------------------------------	----------------------------------	-------------------------

No allowable will be assigned to this completion until all interests have been consolidated or a non-standard unit has been approved by the division.



COORDINATE TABLE	
SHL (NAD 83 NME) Y = 404,918.2 N X = 673,699.6 E LAT. = 32.112478° N LONG. = 103.906821° W	LTP (NAD 83 NME) Y = 416,358.8 N X = 674,021.8 E LAT. = 32.143923° N LONG. = 103.904634° W

MP1 (NAD 83 NME) Y = 404,913.9 N X = 673,415.5 E LAT. = 32.112469° N LONG. = 103.906739° W	BHL (NAD 83 NME) Y = 416,638.8 N X = 674,020.7 E LAT. = 32.144693° N LONG. = 103.904634° W
--	--

FTP (NAD 83 NME) Y = 408,812.0 N X = 674,058.7 E LAT. = 32.123177° N LONG. = 103.904612° W	
--	--

CORNER COORDINATES (NAD 83 NME)	
A - Y = 416,672.4 N B - Y = 414,014.0 N C - Y = 411,356.4 N D - Y = 408,699.2 N E - Y = 406,041.4 N F - Y = 403,383.2 N G - Y = 416,694.9 N H - Y = 414,034.7 N I - Y = 411,375.4 N J - Y = 408,716.9 N K - Y = 406,057.8 N L - Y = 403,398.9 N	A - X = 673,047.0 E B - X = 673,054.3 E C - X = 673,071.3 E D - X = 673,088.1 E E - X = 673,098.4 E F - X = 673,108.1 E G - X = 674,383.2 E H - X = 674,387.7 E I - X = 674,407.3 E J - X = 674,426.9 E K - X = 674,435.7 E L - X = 674,444.4 E

CORNER COORDINATES (NAD 27 NME)	
A - Y = 416,613.7 N B - Y = 413,955.4 N C - Y = 411,297.8 N D - Y = 408,640.7 N E - Y = 405,983.0 N F - Y = 403,324.9 N G - Y = 416,636.2 N H - Y = 413,976.1 N I - Y = 411,316.9 N J - Y = 408,658.4 N K - Y = 405,999.4 N L - Y = 403,340.6 N	A - X = 631,862.5 E B - X = 631,869.8 E C - X = 631,886.7 E D - X = 631,903.4 E E - X = 631,913.6 E F - X = 631,923.2 E G - X = 633,198.8 E H - X = 633,203.2 E I - X = 633,222.7 E J - X = 633,242.2 E K - X = 633,250.9 E L - X = 633,259.5 E

SHL (NAD 27 NME) Y = 404,859.9 N X = 632,514.8 E LAT. = 32.112353° N LONG. = 103.906338° W	LTP (NAD 27 NME) Y = 416,300.1 N X = 632,837.4 E LAT. = 32.143798° N LONG. = 103.904149° W
--	--

MP1 (NAD 27 NME) Y = 404,856.6 N X = 632,230.7 E LAT. = 32.112344° N LONG. = 103.906256° W	BHL (NAD 27 NME) Y = 416,580.1 N X = 632,836.3 E LAT. = 32.144568° N LONG. = 103.904149° W
--	--

FTP (NAD 27 NME) Y = 408,753.6 N X = 632,874.0 E LAT. = 32.123052° N LONG. = 103.904128° W	
--	--

<sup>17</sup> OPERATOR CERTIFICATION

I hereby certify that the information contained herein is true and complete to the best of my knowledge and belief, and that this organization either owns a working interest or unleased mineral interest in the land including the proposed bottom hole location or has a right to drill this well at this location pursuant to a contract with an owner of such a mineral or working interest, or to a voluntary pooling agreement or a compulsory pooling order heretofore entered by the division.

*Jessica Dooling* 1/9/2023  
Signature Date

Jessica Dooling

Printed Name

jessica.dooling@exxonmobil.com

E-mail Address

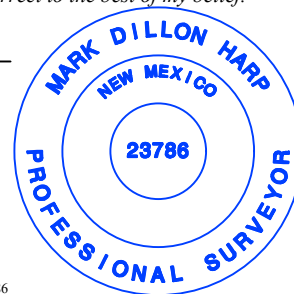
<sup>18</sup> SURVEYOR CERTIFICATION

I hereby certify that the well location shown on this plat was plotted from field notes of actual surveys made by me or under my supervision, and that the same is true and correct to the best of my belief.

1/5/2023

Date of Survey

Signature and Seal of  
Professional Surveyor:



MARK DILLON HARP 23786  
Certificate Number

AI

618.013003.18-10

**SECTION 20**

OWNER: B.L.M.

TOWNSHIP 25 SOUTH,  
RANGE 30 EAST  
N.M.P.M.

NW/4 SW/4

NE/4 SW/4

**LEGEND**

	SECTION LINE
	PROPOSED WELL PAD
	PERMITTED WELL LOCATION
	TBD WELL LOCATION
	PROPOSED ACCESS ROAD
	TOP SOIL
	EXISTING ROAD
	EXISTING OVERHEAD ELECTRIC
	EXISTING PAD

**DRIVING DIRECTION TO LOCATION**

FROM THE INTERSECTION OF LONGHORN ROAD AND PIPELINE ROAD NUMBER 1, HEAD NORTHEAST ON PIPELINE ROAD NUMBER ONE AND GO APPROX. 6.8 MILES. TURN LEFT (NORTHWEST) ONTO LEASE ROAD AND GO APPROX. 0.9 MILES. TURN LEFT (WEST) ONTO LEASE ROAD AND GO APPROX. 0.5 MILES. TURN LEFT (SOUTH) ONTO LEASE ROAD AND GO APPROX. 0.5 MILES, ARRIVING AT THE PROPOSED ROAD AND THE LOCATION IS TO THE NORTHEAST.

**GENERAL NOTES**

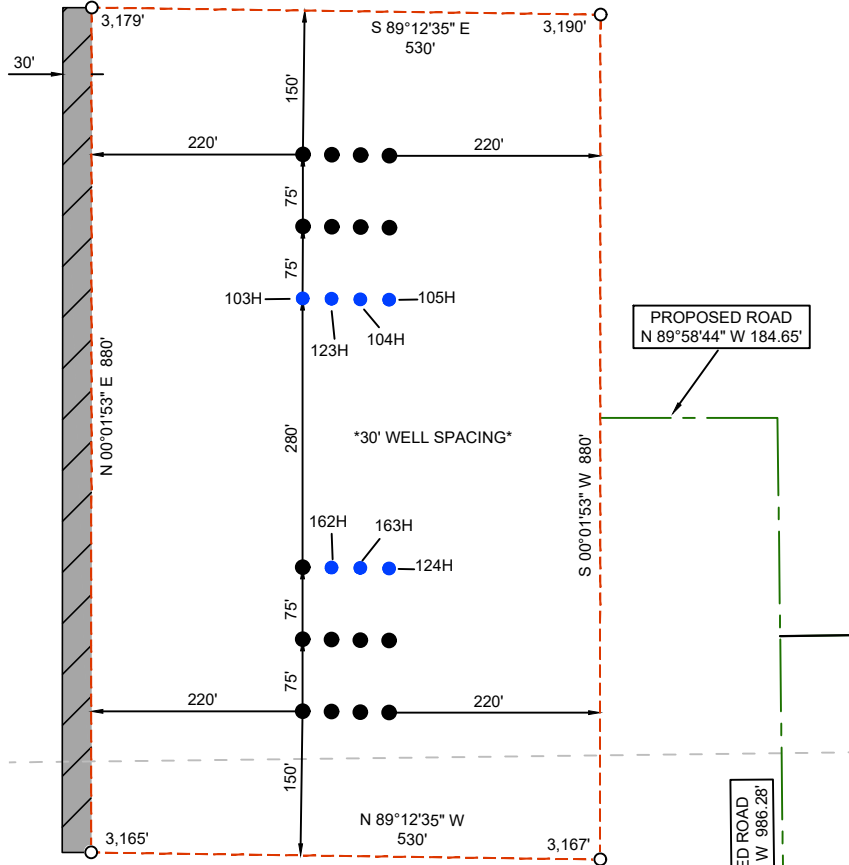
1. BEARINGS AND COORDINATES SHOWN HEREON ARE MERCATOR GRID AND CONFORM TO THE NEW MEXICO COORDINATES SYSTEM "NEW MEXICO EAST ZONE" NORTH AMERICAN DATUM 1983.
2. LATITUDE AND LONGITUDE VALUES SHOWN HEREON ARE RELATIVE TO THE NORTH AMERICAN DATA (NAD83).
3. REFER TO TOPOGRAPHICAL AND ACCESS ROAD MAP FOR PROPOSED ROAD LOCATION.

I, MARK DILLON HARP, NEW MEXICO PROFESSIONAL SURVEYOR NO. 23786, DO HEREBY CERTIFY THAT THIS SURVEY PLAT AND THE ACTUAL SURVEY ON THE GROUND UPON WHICH IT IS BASED WERE PERFORMED BY ME OR UNDER MY DIRECT SUPERVISION; THAT I AM RESPONSIBLE FOR THIS SURVEY, THAT THIS SURVEY MEETS THE MINIMUM STANDARDS FOR SURVEYING IN NEW MEXICO, AND THAT IS TRUE AND CORRECT TO THE BEST OF MY KNOWLEDGE AND BELIEF.

MARK DILLON HARP  
REGISTERED PROFESSIONAL LAND SURVEYOR  
STATE OF NEW MEXICO NO. 23786



0 100' 200' 400'  
SCALE: 1"=200'



SE/4 SW/4

EXISTING  
PLU 20 BD  
PAD**ACREAGE INFORMATION**

PROPOSED PAD	= 10.706 ACRES
TOP SOIL	= 0.606 ACRES
<b>TOTAL</b>	<b>= 11.312 ACRES</b>



505 Pecan Street, Suite 201, Fort Worth, TX 76102  
ph: 817.865.5344 manhard.com  
Texas Board of Professional Engineers &  
Land Surveyors Reg. No. F-10194754 (Surv), F-21732 (Eng)

©2023 MANHARD CONSULTING, ALL RIGHTS RESERVED

**A WELL SITE PLAN FOR XTO PERMIAN OPERATING, LLC****POKER LAKE UNIT 20-8/20-17 BD PROPOSED PAD "B"**

PAD CENTER IS LOCATED 1,668 FEET FROM THE SOUTH LINE AND 1,950 FEET FROM THE WEST LINE  
OF SECTION 20, TOWNSHIP 25 SOUTH, RANGE 30 EAST, N.M.P.M. EDDY COUNTY, NEW MEXICO

CHECKED BY: <b>AR</b>	DATE: <b>01/30/2023</b>	SCALE: <b>1" = 200'</b>	PROJECT NO.: <b>618.013003.18</b>
DRAWN BY: <b>AI</b>	FIELD CREW:	REVISION NO.: <b>2</b>	SHEET: <b>1 OF 3</b>

**DRILLING PLAN: BLM COMPLIANCE**  
(Supplement to BLM 3160-3)

XTO Energy Inc.  
PLU 20-8 Brushy Draw 162H  
Projected TD: 23455' MD / 11280' TVD  
SHL: 1528' FSL & 1934' FWL , Section 20, T25S, R30E  
BHL: 2609' FSL & 2310' FWL , Section 8, T25S, R30E  
Eddy County, NM

**1. Geologic Name of Surface Formation**

A. Quaternary

**2. Estimated Tops of Geological Markers & Depths of Anticipated Fresh Water, Oil or Gas**

Formation	Well Depth (TVD)	Water/Oil/Gas
Rustler	720'	Water
Top of Salt	895'	Water
Base of Salt	3425'	Water
Delaware	3620'	Water
Brushy Canyon	6049'	Water/Oil/Gas
Bone Spring	7435'	Water
1st Bone Spring Ss	8371'	Water/Oil/Gas
2nd Bone Spring Ss	9257'	Water/Oil/Gas
3rd Bone Spring Ss	10324'	Water/Oil/Gas
Wolfcamp	10683'	Water/Oil/Gas
Wolfcamp X	10708'	Water/Oil/Gas
Wolfcamp Y	10793'	Water/Oil/Gas
Wolfcamp A	10820'	Water/Oil/Gas
Wolfcamp B	11252'	Water/Oil/Gas
Wolfcamp D	11626'	Water/Oil/Gas
Wolfcamp E	11677'	Water/Oil/Gas
<b>Target/Land Curve</b>	<b>11280'</b>	<b>Water/Oil/Gas</b>

\*\*\* Hydrocarbons @ Brushy Canyon

\*\*\* Groundwater depth 40' (per NM State Engineers Office).

No other formations are expected to yield oil, gas or fresh water in measurable volumes. The surface fresh water sands will be protected by setting 13.375 inch casing @ 820' (75' above the salt) and circulating cement back to surface. The intermediate will isolate from the top of salt down to the next casing seat by setting 9.625 inch casing at 10434' and cemented to surface. A 8.5 inch curve and 8.5 inch lateral hole will be drilled to 23455 MD/TD and 5.5 inch production casing will be set at TD and cemented back up in the intermediate shoe (estimated TOC 10134 feet).

**3. Casing Design**

Hole Size	Depth	OD Csg	Weight	Grade	Collar	New/Used	SF Burst	SF Collapse	SF Tension
17.5	0' – 820'	13.375	54.5	J-55	BTC	New	0.92	3.05	19.09
12.5	0' – 4000'	9.625	40	HC P-110	BTC	New	1.54	2.10	3.02
12.5	4000' – 10434'	9.625	40	HC L-80	BTC	New	1.12	1.29	3.56
8.5	0' – 10334'	5.5	23	RY P-110	Semi-Premium	New	1.21	2.08	1.84
8.5	10334' - 23455'	5.5	23	RY P-110	Semi-Flush	New	1.21	1.91	2.00

- XTO requests the option to utilize a spudder rig (Atlas Copco RD20 or Equivalent) to set and cement surface casing per this Sundry
- XTO requests to not utilize centralizers in the curve and lateral
- 9.625 Collapse analyzed using 50% evacuation based on regional experience.
- 5.5 Tension calculated using vertical hanging weight plus the lateral weight multiplied by a friction factor of 0.35
- Test on Casing will be limited to 70% burst of the casing or 1500 psi, whichever is less
- XTO requests the option to use 5" BTC Float equipment for the the production casing



**Wellhead:**

*Permanent Wellhead – Multibowl System*

A. Starting Head: 13-5/8" 10M top flange x 13-3/8" bottom

B. Tubing Head: 13-5/8" 10M bottom flange x 7-1/16" 15M top flange

- Wellhead will be installed by manufacturer's representatives.
- Manufacturer will monitor welding process to ensure appropriate temperature of seal.
- Operator will test the 9-5/8" casing per BLM Onshore Order 2
- Wellhead Manufacturer representative will not be present for BOP test plug installation

#### 4. Cement Program

##### **Surface Casing: 13.375, 54.5 New BTC, J-55 casing to be set at +/- 820'**

Lead: 380 sxs EconoCem-HLTRRC (mixed at 12.9 ppg, 1.87 ft<sup>3</sup>/sx, 10.13 gal/sx water)

Tail: 300 sxs Class C + 2% CaCl (mixed at 14.8 ppg, 1.35 ft<sup>3</sup>/sx, 6.39 gal/sx water)

Top of Cement: Surface

Compressives: 12-hr = 900 psi 24 hr = 1500 psi

##### **2nd Intermediate Casing: 9.625, 40 New casing to be set at +/- 10434'**

###### 1st Stage

Optional Lead: 1130 sxs Class C (mixed at 10.5 ppg, 2.77 ft<sup>3</sup>/sx, 15.59 gal/sx water)

TOC: Surface

Tail: 1400 sxs Class C (mixed at 14.8 ppg, 1.35 ft<sup>3</sup>/sx, 6.39 gal/sx water)

TOC: Brushy Canyon @ 6049

Compressives: 12-hr = 900 psi 24 hr = 1150 psi

###### 2nd Stage

Lead: 0 sxs Class C (mixed at 12.9 ppg, 2.16 ft<sup>3</sup>/sx, 9.61 gal/sx water)

Tail: 2360 sxs Class C (mixed at 14.8 ppg, 1.33 ft<sup>3</sup>/sx, 6.39 gal/sx water)

Top of Cement: 0

Compressives: 12-hr = 900 psi 24 hr = 1150 psi

XTO requests to pump a two stage cement job on the 7-5/8" intermediate casing string with the first stage being pumped conventionally with the calculated top of cement at the Brush Canyon (6049') and the second stage performed as a bradenhead squeeze with planned cement from the Brushy Canyon to surface. If cement is not visually confirmed to circulate to surface, the final cement top after the second stage job will be verified by Echo-meter. If necessary, a top out consisting of 1,500 sack of Class C cement + 3% Salt + 1% PreMag-M + 6% Bentonite Gel (2.30 yld, 12.91 ppg) will be executed as a contingency. If cement is still unable to circulate to surface, another Echo-meter run will be performed for cement top verification.

XTO will include the Echo-meter verified fluid top and the volume of displacement fluid above the cement slurry in the annulus in all post-drill sundries on wells utilizing this cement program.

XTO will report to the BLM the volume of fluid (limited to 5 bbls) used to flush intermediate casing valves following backside cementing procedures.

XTO requests to pump an Optional Lead if well conditions dictate in an attempt to bring cement inside the first intermediate casing. If cement reaches the desired height, the BLM will be notified and the second stage bradenhead squeeze and subsequent TOC verification will be negated.

XTO requests the option to conduct the bradenhead squeeze and TOC verification offline as per standard approval from BLM when unplanned remediation is needed and batch drilling is approved. In the event the bradenhead is conducted, we will ensure the first stage cement job is cemented properly and the well is static with floats holding and no pressure on the csg annulus as with all other casing strings where batch drilling operations occur before moving off the rig. The TA cap will also be installed per Cactus procedure and pressure inside the casing will be monitored via the valve on the TA cap as per standard batch drilling ops.

##### **Production Casing: 5.5, 23 New Semi-Flush, RY P-110 casing to be set at +/- 23455'**

Lead: 50 sxs NeoCem (mixed at 11.5 ppg, 2.69 ft<sup>3</sup>/sx, 15.00 gal/sx water) Top of Cement: 10134 feet

Tail: 2520 sxs VersaCem (mixed at 13.2 ppg, 1.51 ft<sup>3</sup>/sx, 8.38 gal/sx water) Top of Cement: 10634 feet

Compressives: 12-hr = 800 psi 24 hr = 1500 psi

XTO requests the option to offline cement and remediate (if needed) surface and intermediate casing strings where batch drilling is approved and if unplanned remediation is needed. XTO will ensure well is static with no pressure on the csg annulus, as with all other casing strings where batch drilling operations occur before moving off the rig. The TA cap will also be installed when applicable per Cactus procedure and pressure inside the casing will be monitored via the valve on the TA cap as per standard batch drilling ops. Offline cement operations will then be conducted after the rig is moved off the current well to the next well in the batch sequence.



## 5. Pressure Control Equipment

Once the permanent WH is installed on the 13.375 casing, the blow out preventer equipment (BOP) will consist of a 13-5/8" minimum 10M Hydriil and a 13-5/8" minimum 10M Double Ram BOP. MASP should not exceed 5144 psi. In any instance where 10M BOP is required by BLM, XTO requests a variance to utilize 5M annular with 10M ram preventers (a common BOP configuration, which allows use of 10M rams in unlikely event that pressures exceed 5M).

All BOP testing will be done by an independent service company. Annular pressure tests will be limited to 50% of the working pressure. When nipping up on the 13.375, 10M bradenhead and flange, the BOP test will be limited to 10000 psi. When nipping up on the 9.625, the BOP will be tested to a minimum of 10000 psi. All BOP tests will include a low pressure test as per BLM regulations. The 10M BOP diagrams are attached. Blind rams will be functioned tested each trip, pipe rams will be functioned tested each day.

A variance is requested to allow use of a flex hose as the choke line from the BOP to the Choke Manifold. If this hose is used, a copy of the manufacturer's certification and pressure test chart will be kept on the rig. Attached is an example of a certification and pressure test chart. The manufacturer does not require anchors.

XTO requests a variance to be able to batch drill this well if necessary. In doing so, XTO will set casing and ensure that the well is cemented properly (unless approval is given for offline cementing) and the well is static. With floats holding, no pressure on the csg annulus, and the installation of a 10K TA cap as per Cactus recommendations, XTO will contact the BLM to skid the rig to drill the remaining wells on the pad. Once surface and both intermediate strings are all completed, XTO will begin drilling the production

hole on each of the wells.

A variance is requested to **ONLY** test broken pressure seals on the BOP equipment when moving from wellhead to wellhead which is in compliance with API Standard 53. API standard 53 states, that for pad drilling operation, moving from one wellhead to another within 21 days, pressure testing is required for pressure-containing and pressure-controlling connections when the integrity of a pressure seal is broken. Based on discussions with the BLM on February 27th 2020, we will request permission to **ONLY** retest broken pressure seals if the following conditions are met: 1. After a full BOP test is conducted on the first well on the pad 2. When skidding to drill an intermediate section that does not penetrate into the Wolfcamp.

## 6. Proposed Mud Circulation System

INTERVAL	Hole Size	Mud Type	MW (ppg)	Viscosity (sec/qt)	Fluid Loss (cc)
0' - 820'	17.5	FW/Native	8.7-9.2	35-40	NC
820' - 10434'	12.5	FW / Cut Brine / Direct Emulsion	9.7-10.2	30-32	NC
10434' - 23455'	8.5	OBM	13-13.5	50-60	NC - 20

The necessary mud products for weight addition and fluid loss control will be on location at all times.

Spud with fresh water/native mud. Drill out from under 9-5/8" surface casing with brine solution. A 9.7 ppg - 10.2 ppg cut brine mud will be used while drilling through the salt formation. Use fibrous materials as needed to control seepage and lost circulation. Pump viscous sweeps as needed for hole cleaning. Pump speed will be recorded on a daily drilling report after mudding up. A Pason or Totco will be used to detect changes in loss or gain of mud volume. A mud test will be performed every 24 hours to determine: density, viscosity, strength, filtration and pH as necessary. Use available solids controls equipment to help keep mud weight down after mud up. Rig up solids control equipment to operate as a closed loop system.

## 7. Auxiliary Well Control and Monitoring Equipment

- A. A Kelly cock will be in the drill string at all times.
- B. A full opening drill pipe stabbing valve having appropriate connections will be on the rig floor at all times.
- C. H2S monitors will be on location when drilling below the 13.375 casing.

## 8. Logging, Coring and Testing Program

Mud Logger: Mud Logging Unit (2 man) below intermediate casing.

Open hole logging will not be done on this well.

## 9. Abnormal Pressures and Temperatures / Potential Hazards

None Anticipated. BHT of 175 to 195 F is anticipated. No H2S is expected but monitors will be in place to detect any H2S occurrences. Should these circumstances be encountered the operator and drilling contractor are prepared to take all necessary steps to ensure safety of all personnel and environment. Lost circulation could occur but is not expected to be a serious problem in this area and hole seepage will be compensated for by additions of small amounts of LCM in the drilling fluid. The maximum anticipated bottom hole pressure for this well is 7625 psi.

## 10. Anticipated Starting Date and Duration of Operations

Anticipated spud date will be after BLM approval. Move in operations and drilling is expected to take 40 days.

## **Delaware Basin Asset (Plans)**

**Eddy County**

**PLU 20-8 Brushy Draw Pad B**

**PLU 20-8 Brushy Draw 162H**

**PLU 20-8 Brushy Draw 162H**

**Plan: PLU 20-8 Brushy Draw 162H**

## **Standard Planning Report**

**16 January, 2023**

XTO Energy  
Planning Report

<b>Database:</b>	LMRKPROD3	<b>Local Co-ordinate Reference:</b>	Well PLU 20-8 Brushy Draw 162H
<b>Company:</b>	Delaware Basin Asset (Plans)	<b>TVD Reference:</b>	RKB(30') @ 3200.0usft
<b>Project:</b>	Eddy County	<b>MD Reference:</b>	RKB(30') @ 3200.0usft
<b>Site:</b>	PLU 20-8 Brushy Draw Pad B	<b>North Reference:</b>	Grid
<b>Well:</b>	PLU 20-8 Brushy Draw 162H	<b>Survey Calculation Method:</b>	Minimum Curvature
<b>Wellbore:</b>	PLU 20-8 Brushy Draw 162H		
<b>Design:</b>	PLU 20-8 Brushy Draw 162H		

<b>Project</b>	Eddy County, New Mexico, Well Planning for all projects in Eddy County, NM		
<b>Map System:</b>	US State Plane 1927 (Exact solution)	<b>System Datum:</b>	Mean Sea Level
<b>Geo Datum:</b>	NAD 1927 (NADCON CONUS)		
<b>Map Zone:</b>	New Mexico East 3001		

Site	PLU 20-8 Brushy Draw Pad B					
Site Position:		Northing:	405,140.20 usft	Latitude:	32° 6' 47.245 N	
From:	Map	Easting:	632,484.90 usft	Longitude:	103° 54' 19.551 W	
Position Uncertainty:		3.0 usft	Slot Radius:	13-3/16 "	Grid Convergence:	0.23 °

Well	PLU 20-8 Brushy Draw 162H					
Well Position	+N/-S	-280.3 usft	Northing:	404,859.90 usft	Latitude:	32° 6' 44.470 N
	+E/-W	29.9 usft	Easting:	632,514.80 usft	Longitude:	103° 54' 19.217 W
Position Uncertainty		0.0 usft	Wellhead Elevation:		Ground Level:	3,170.0 usft

<b>Wellbore</b>	PLU 20-8 Brushy Draw 162H				
<b>Magnetics</b>	<b>Model Name</b>	<b>Sample Date</b>	<b>Declination (°)</b>	<b>Dip Angle (°)</b>	<b>Field Strength (nT)</b>
	IGRF2020	1/16/2023	6.50	59.70	47,229.78965747

<b>Design</b>	PLU 20-8 Brushy Draw 162H			
<b>Audit Notes:</b>				
<b>Version:</b>	<b>Phase:</b>	PROTOTYPE	<b>Tie On Depth:</b>	0.0
<b>Vertical Section:</b>	<b>Depth From (TVD) (usft)</b>	<b>+N/-S (usft)</b>	<b>+E/-W (usft)</b>	<b>Direction (°)</b>
	0.0	0.0	0.0	9.37

<b>Plan Survey Tool Program</b>	<b>Date</b>	1/16/2023		
<b>Depth From (usft)</b>	<b>Depth To (usft)</b>	<b>Survey (Wellbore)</b>	<b>Tool Name</b>	<b>Remarks</b>
1	0.0	23,455.1	PLU 20-8 Brushy Draw 162H (PL	XOMR2_OWSG MWD+IFR1+ OWSG MWD + IFR1 + Multi-St

XTO Energy  
Planning Report

Database:	LMRKPROD3	Local Co-ordinate Reference:	Well PLU 20-8 Brushy Draw 162H
Company:	Delaware Basin Asset (Plans)	TVD Reference:	RKB(30') @ 3200.0usft
Project:	Eddy County	MD Reference:	RKB(30') @ 3200.0usft
Site:	PLU 20-8 Brushy Draw Pad B	North Reference:	Grid
Well:	PLU 20-8 Brushy Draw 162H	Survey Calculation Method:	Minimum Curvature
Wellbore:	PLU 20-8 Brushy Draw 162H		
Design:	PLU 20-8 Brushy Draw 162H		

Plan Sections										
Measured Depth (usft)	Inclination (°)	Azimuth (°)	Vertical Depth (usft)	+N/-S (usft)	+E/-W (usft)	Dogleg Rate (°/100usft)	Build Rate (°/100usft)	Turn Rate (°/100usft)	TFO (°)	Target
0.0	0.00	0.00	0.0	0.0	0.0	0.00	0.00	0.00	0.00	
1,000.0	0.00	0.00	1,000.0	0.0	0.0	0.00	0.00	0.00	0.00	
1,509.2	10.18	209.41	1,506.6	-39.3	-22.2	2.00	2.00	0.00	209.41	
5,818.3	10.18	209.41	5,747.7	-703.1	-396.3	0.00	0.00	0.00	0.00	
5,920.1	0.00	0.00	5,849.0	-710.9	-400.7	10.00	-10.00	0.00	180.00	
10,634.9	0.00	0.00	10,563.8	-710.9	-400.7	0.00	0.00	0.00	0.00	
11,759.9	90.00	9.37	11,280.0	-4.3	-284.1	8.00	8.00	0.00	0.00	PLU 20-8 Brushy Dra
15,710.6	90.00	9.37	11,280.0	3,893.7	359.2	0.00	0.00	0.00	0.00	PLU 20-8 Brushy Dra
23,178.0	90.00	9.37	11,280.0	11,261.4	1,575.1	0.00	0.00	0.00	0.00	PLU 20-8 Brushy Dra
23,455.1	90.00	9.37	11,280.0	11,534.8	1,620.2	0.00	0.00	0.00	0.00	PLU 20-8 Brushy Dra

# XTO Energy

## Planning Report

<b>Database:</b>	LMRKPROD3	<b>Local Co-ordinate Reference:</b>	Well PLU 20-8 Brushy Draw 162H
<b>Company:</b>	Delaware Basin Asset (Plans)	<b>TVD Reference:</b>	RKB(30') @ 3200.0usft
<b>Project:</b>	Eddy County	<b>MD Reference:</b>	RKB(30') @ 3200.0usft
<b>Site:</b>	PLU 20-8 Brushy Draw Pad B	<b>North Reference:</b>	Grid
<b>Well:</b>	PLU 20-8 Brushy Draw 162H	<b>Survey Calculation Method:</b>	Minimum Curvature
<b>Wellbore:</b>	PLU 20-8 Brushy Draw 162H		
<b>Design:</b>	PLU 20-8 Brushy Draw 162H		

Planned Survey									
Measured Depth (usft)	Inclination (°)	Azimuth (°)	Vertical Depth (usft)	+N/-S (usft)	+E/-W (usft)	Vertical Section (usft)	Dogleg Rate (°/100usft)	Build Rate (°/100usft)	Turn Rate (°/100usft)
0.0	0.00	0.00	0.0	0.0	0.0	0.0	0.00	0.00	0.00
1,000.0	0.00	0.00	1,000.0	0.0	0.0	0.0	0.00	0.00	0.00
<b>Start Build 2.00</b>									
1,100.0	2.00	209.41	1,100.0	-1.5	-0.9	-1.6	2.00	2.00	0.00
1,200.0	4.00	209.41	1,199.8	-6.1	-3.4	-6.6	2.00	2.00	0.00
1,300.0	6.00	209.41	1,299.5	-13.7	-7.7	-14.7	2.00	2.00	0.00
1,400.0	8.00	209.41	1,398.7	-24.3	-13.7	-26.2	2.00	2.00	0.00
1,500.0	10.00	209.41	1,497.5	-37.9	-21.4	-40.9	2.00	2.00	0.00
1,509.2	10.18	209.41	1,506.6	-39.3	-22.2	-42.4	2.00	2.00	0.00
<b>Start 4309.0 hold at 1509.2 MD</b>									
1,600.0	10.18	209.41	1,595.9	-53.3	-30.0	-57.5	0.00	0.00	0.00
1,700.0	10.18	209.41	1,694.3	-68.7	-38.7	-74.1	0.00	0.00	0.00
1,800.0	10.18	209.41	1,792.7	-84.1	-47.4	-90.7	0.00	0.00	0.00
1,900.0	10.18	209.41	1,891.2	-99.5	-56.1	-107.3	0.00	0.00	0.00
2,000.0	10.18	209.41	1,989.6	-114.9	-64.8	-123.9	0.00	0.00	0.00
2,100.0	10.18	209.41	2,088.0	-130.3	-73.5	-140.5	0.00	0.00	0.00
2,200.0	10.18	209.41	2,186.4	-145.7	-82.1	-157.2	0.00	0.00	0.00
2,300.0	10.18	209.41	2,284.9	-161.1	-90.8	-173.8	0.00	0.00	0.00
2,400.0	10.18	209.41	2,383.3	-176.5	-99.5	-190.4	0.00	0.00	0.00
2,500.0	10.18	209.41	2,481.7	-191.9	-108.2	-207.0	0.00	0.00	0.00
2,600.0	10.18	209.41	2,580.1	-207.3	-116.9	-223.6	0.00	0.00	0.00
2,700.0	10.18	209.41	2,678.6	-222.7	-125.6	-240.2	0.00	0.00	0.00
2,800.0	10.18	209.41	2,777.0	-238.1	-134.2	-256.8	0.00	0.00	0.00
2,900.0	10.18	209.41	2,875.4	-253.6	-142.9	-273.4	0.00	0.00	0.00
3,000.0	10.18	209.41	2,973.8	-269.0	-151.6	-290.1	0.00	0.00	0.00
3,100.0	10.18	209.41	3,072.3	-284.4	-160.3	-306.7	0.00	0.00	0.00
3,200.0	10.18	209.41	3,170.7	-299.8	-169.0	-323.3	0.00	0.00	0.00
3,300.0	10.18	209.41	3,269.1	-315.2	-177.6	-339.9	0.00	0.00	0.00
3,400.0	10.18	209.41	3,367.5	-330.6	-186.3	-356.5	0.00	0.00	0.00
3,500.0	10.18	209.41	3,466.0	-346.0	-195.0	-373.1	0.00	0.00	0.00
3,600.0	10.18	209.41	3,564.4	-361.4	-203.7	-389.7	0.00	0.00	0.00
3,700.0	10.18	209.41	3,662.8	-376.8	-212.4	-406.3	0.00	0.00	0.00
3,800.0	10.18	209.41	3,761.2	-392.2	-221.1	-422.9	0.00	0.00	0.00
3,900.0	10.18	209.41	3,859.7	-407.6	-229.7	-439.6	0.00	0.00	0.00
4,000.0	10.18	209.41	3,958.1	-423.0	-238.4	-456.2	0.00	0.00	0.00
4,100.0	10.18	209.41	4,056.5	-438.4	-247.1	-472.8	0.00	0.00	0.00
4,200.0	10.18	209.41	4,154.9	-453.8	-255.8	-489.4	0.00	0.00	0.00
4,300.0	10.18	209.41	4,253.3	-469.2	-264.5	-506.0	0.00	0.00	0.00
4,400.0	10.18	209.41	4,351.8	-484.6	-273.1	-522.6	0.00	0.00	0.00
4,500.0	10.18	209.41	4,450.2	-500.0	-281.8	-539.2	0.00	0.00	0.00
4,600.0	10.18	209.41	4,548.6	-515.4	-290.5	-555.8	0.00	0.00	0.00
4,700.0	10.18	209.41	4,647.0	-530.8	-299.2	-572.4	0.00	0.00	0.00
4,800.0	10.18	209.41	4,745.5	-546.2	-307.9	-589.1	0.00	0.00	0.00
4,900.0	10.18	209.41	4,843.9	-561.6	-316.6	-605.7	0.00	0.00	0.00
5,000.0	10.18	209.41	4,942.3	-577.0	-325.2	-622.3	0.00	0.00	0.00
5,100.0	10.18	209.41	5,040.7	-592.4	-333.9	-638.9	0.00	0.00	0.00
5,200.0	10.18	209.41	5,139.2	-607.8	-342.6	-655.5	0.00	0.00	0.00
5,300.0	10.18	209.41	5,237.6	-623.2	-351.3	-672.1	0.00	0.00	0.00
5,400.0	10.18	209.41	5,336.0	-638.6	-360.0	-688.7	0.00	0.00	0.00
5,500.0	10.18	209.41	5,434.4	-654.0	-368.7	-705.3	0.00	0.00	0.00
5,600.0	10.18	209.41	5,532.9	-669.5	-377.3	-722.0	0.00	0.00	0.00
5,700.0	10.18	209.41	5,631.3	-684.9	-386.0	-738.6	0.00	0.00	0.00
5,800.0	10.18	209.41	5,729.7	-700.3	-394.7	-755.2	0.00	0.00	0.00
5,818.3	10.18	209.41	5,747.7	-703.1	-396.3	-758.2	0.00	0.00	0.00

## XTO Energy

## Planning Report

<b>Database:</b>	LMRKPROD3	<b>Local Co-ordinate Reference:</b>	Well PLU 20-8 Brushy Draw 162H
<b>Company:</b>	Delaware Basin Asset (Plans)	<b>TVD Reference:</b>	RKB(30') @ 3200.0usft
<b>Project:</b>	Eddy County	<b>MD Reference:</b>	RKB(30') @ 3200.0usft
<b>Site:</b>	PLU 20-8 Brushy Draw Pad B	<b>North Reference:</b>	Grid
<b>Well:</b>	PLU 20-8 Brushy Draw 162H	<b>Survey Calculation Method:</b>	Minimum Curvature
<b>Wellbore:</b>	PLU 20-8 Brushy Draw 162H		
<b>Design:</b>	PLU 20-8 Brushy Draw 162H		

Planned Survey									
Measured Depth (usft)	Inclination (°)	Azimuth (°)	Vertical Depth (usft)	+N/-S (usft)	+E/-W (usft)	Vertical Section (usft)	Dogleg Rate (°/100usft)	Build Rate (°/100usft)	Turn Rate (°/100usft)
<b>Start Drop -10.00</b>									
5,900.0	2.01	209.41	5,828.9	-710.6	-400.5	-766.4	10.00	-10.00	0.00
5,920.1	0.00	0.00	5,849.0	-710.9	-400.7	-766.7	10.00	-10.00	0.00
<b>Start 4714.8 hold at 5920.1 MD</b>									
10,634.9	0.00	0.00	10,563.8	-710.9	-400.7	-766.7	0.00	0.00	0.00
<b>Start Build 8.00</b>									
10,700.0	5.21	9.37	10,628.8	-708.0	-400.2	-763.7	8.00	8.00	0.00
10,800.0	13.21	9.37	10,727.4	-692.2	-397.6	-747.8	8.00	8.00	0.00
10,900.0	21.21	9.37	10,822.9	-663.1	-392.8	-718.2	8.00	8.00	0.00
11,000.0	29.21	9.37	10,913.3	-621.1	-385.9	-675.6	8.00	8.00	0.00
11,100.0	37.21	9.37	10,996.9	-567.1	-377.0	-620.9	8.00	8.00	0.00
11,200.0	45.21	9.37	11,072.1	-502.2	-366.3	-555.1	8.00	8.00	0.00
11,300.0	53.21	9.37	11,137.3	-427.5	-353.9	-479.4	8.00	8.00	0.00
11,400.0	61.21	9.37	11,191.5	-344.7	-340.3	-395.5	8.00	8.00	0.00
11,500.0	69.21	9.37	11,233.4	-255.2	-325.5	-304.7	8.00	8.00	0.00
11,600.0	77.21	9.37	11,262.2	-160.8	-309.9	-209.1	8.00	8.00	0.00
11,700.0	85.21	9.37	11,277.5	-63.3	-293.8	-110.3	8.00	8.00	0.00
11,759.9	90.00	9.37	11,280.0	-4.3	-284.1	-50.5	8.00	8.00	0.00
<b>Start 3950.7 hold at 11759.9 MD</b>									
11,800.0	90.00	9.37	11,280.0	35.3	-277.6	-10.4	0.00	0.00	0.00
11,900.0	90.00	9.37	11,280.0	133.9	-261.3	89.6	0.00	0.00	0.00
12,000.0	90.00	9.37	11,280.0	232.6	-245.0	189.6	0.00	0.00	0.00
12,100.0	90.00	9.37	11,280.0	331.2	-228.7	289.6	0.00	0.00	0.00
12,200.0	90.00	9.37	11,280.0	429.9	-212.4	389.6	0.00	0.00	0.00
12,300.0	90.00	9.37	11,280.0	528.6	-196.2	489.6	0.00	0.00	0.00
12,400.0	90.00	9.37	11,280.0	627.2	-179.9	589.6	0.00	0.00	0.00
12,500.0	90.00	9.37	11,280.0	725.9	-163.6	689.6	0.00	0.00	0.00
12,600.0	90.00	9.37	11,280.0	824.6	-147.3	789.6	0.00	0.00	0.00
12,700.0	90.00	9.37	11,280.0	923.2	-131.0	889.6	0.00	0.00	0.00
12,800.0	90.00	9.37	11,280.0	1,021.9	-114.7	989.6	0.00	0.00	0.00
12,900.0	90.00	9.37	11,280.0	1,120.6	-98.5	1,089.6	0.00	0.00	0.00
13,000.0	90.00	9.37	11,280.0	1,219.2	-82.2	1,189.6	0.00	0.00	0.00
13,100.0	90.00	9.37	11,280.0	1,317.9	-65.9	1,289.6	0.00	0.00	0.00
13,200.0	90.00	9.37	11,280.0	1,416.6	-49.6	1,389.6	0.00	0.00	0.00
13,300.0	90.00	9.37	11,280.0	1,515.2	-33.3	1,489.6	0.00	0.00	0.00
13,400.0	90.00	9.37	11,280.0	1,613.9	-17.0	1,589.6	0.00	0.00	0.00
13,500.0	90.00	9.37	11,280.0	1,712.6	-0.8	1,689.6	0.00	0.00	0.00
13,600.0	90.00	9.37	11,280.0	1,811.2	15.5	1,789.6	0.00	0.00	0.00
13,700.0	90.00	9.37	11,280.0	1,909.9	31.8	1,889.6	0.00	0.00	0.00
13,800.0	90.00	9.37	11,280.0	2,008.6	48.1	1,989.6	0.00	0.00	0.00
13,900.0	90.00	9.37	11,280.0	2,107.2	64.4	2,089.6	0.00	0.00	0.00
14,000.0	90.00	9.37	11,280.0	2,205.9	80.7	2,189.6	0.00	0.00	0.00
14,100.0	90.00	9.37	11,280.0	2,304.6	96.9	2,289.6	0.00	0.00	0.00
14,200.0	90.00	9.37	11,280.0	2,403.2	113.2	2,389.6	0.00	0.00	0.00
14,300.0	90.00	9.37	11,280.0	2,501.9	129.5	2,489.6	0.00	0.00	0.00
14,400.0	90.00	9.37	11,280.0	2,600.6	145.8	2,589.6	0.00	0.00	0.00
14,500.0	90.00	9.37	11,280.0	2,699.2	162.1	2,689.6	0.00	0.00	0.00
14,600.0	90.00	9.37	11,280.0	2,797.9	178.4	2,789.6	0.00	0.00	0.00
14,700.0	90.00	9.37	11,280.0	2,896.5	194.6	2,889.6	0.00	0.00	0.00
14,800.0	90.00	9.37	11,280.0	2,995.2	210.9	2,989.6	0.00	0.00	0.00
14,900.0	90.00	9.37	11,280.0	3,093.9	227.2	3,089.6	0.00	0.00	0.00
15,000.0	90.00	9.37	11,280.0	3,192.5	243.5	3,189.6	0.00	0.00	0.00
15,100.0	90.00	9.37	11,280.0	3,291.2	259.8	3,289.6	0.00	0.00	0.00

## XTO Energy

## Planning Report

<b>Database:</b>	LMRKPROD3	<b>Local Co-ordinate Reference:</b>	Well PLU 20-8 Brushy Draw 162H
<b>Company:</b>	Delaware Basin Asset (Plans)	<b>TVD Reference:</b>	RKB(30') @ 3200.0usft
<b>Project:</b>	Eddy County	<b>MD Reference:</b>	RKB(30') @ 3200.0usft
<b>Site:</b>	PLU 20-8 Brushy Draw Pad B	<b>North Reference:</b>	Grid
<b>Well:</b>	PLU 20-8 Brushy Draw 162H	<b>Survey Calculation Method:</b>	Minimum Curvature
<b>Wellbore:</b>	PLU 20-8 Brushy Draw 162H		
<b>Design:</b>	PLU 20-8 Brushy Draw 162H		

Planned Survey									
Measured Depth (usft)	Inclination (°)	Azimuth (°)	Vertical Depth (usft)	+N/-S (usft)	+E/-W (usft)	Vertical Section (usft)	Dogleg Rate (°/100usft)	Build Rate (°/100usft)	Turn Rate (°/100usft)
15,200.0	90.00	9.37	11,280.0	3,389.9	276.1	3,389.6	0.00	0.00	0.00
15,300.0	90.00	9.37	11,280.0	3,488.5	292.3	3,489.6	0.00	0.00	0.00
15,400.0	90.00	9.37	11,280.0	3,587.2	308.6	3,589.6	0.00	0.00	0.00
15,500.0	90.00	9.37	11,280.0	3,685.9	324.9	3,689.6	0.00	0.00	0.00
15,600.0	90.00	9.37	11,280.0	3,784.5	341.2	3,789.6	0.00	0.00	0.00
15,700.0	90.00	9.37	11,280.0	3,883.2	357.5	3,889.6	0.00	0.00	0.00
15,710.6	90.00	9.37	11,280.0	3,893.7	359.2	3,900.2	0.00	0.00	0.00
Start 7467.3 hold at 15710.6 MD									
15,800.0	90.00	9.37	11,280.0	3,981.9	373.8	3,989.6	0.00	0.00	0.00
15,900.0	90.00	9.37	11,280.0	4,080.5	390.0	4,089.6	0.00	0.00	0.00
16,000.0	90.00	9.37	11,280.0	4,179.2	406.3	4,189.6	0.00	0.00	0.00
16,100.0	90.00	9.37	11,280.0	4,277.9	422.6	4,289.6	0.00	0.00	0.00
16,200.0	90.00	9.37	11,280.0	4,376.5	438.9	4,389.6	0.00	0.00	0.00
16,300.0	90.00	9.37	11,280.0	4,475.2	455.2	4,489.6	0.00	0.00	0.00
16,400.0	90.00	9.37	11,280.0	4,573.9	471.4	4,589.6	0.00	0.00	0.00
16,500.0	90.00	9.37	11,280.0	4,672.5	487.7	4,689.6	0.00	0.00	0.00
16,600.0	90.00	9.37	11,280.0	4,771.2	504.0	4,789.6	0.00	0.00	0.00
16,700.0	90.00	9.37	11,280.0	4,869.9	520.3	4,889.6	0.00	0.00	0.00
16,800.0	90.00	9.37	11,280.0	4,968.5	536.6	4,989.6	0.00	0.00	0.00
16,900.0	90.00	9.37	11,280.0	5,067.2	552.9	5,089.6	0.00	0.00	0.00
17,000.0	90.00	9.37	11,280.0	5,165.9	569.1	5,189.6	0.00	0.00	0.00
17,100.0	90.00	9.37	11,280.0	5,264.5	585.4	5,289.6	0.00	0.00	0.00
17,200.0	90.00	9.37	11,280.0	5,363.2	601.7	5,389.6	0.00	0.00	0.00
17,300.0	90.00	9.37	11,280.0	5,461.8	618.0	5,489.6	0.00	0.00	0.00
17,400.0	90.00	9.37	11,280.0	5,560.5	634.3	5,589.6	0.00	0.00	0.00
17,500.0	90.00	9.37	11,280.0	5,659.2	650.6	5,689.6	0.00	0.00	0.00
17,600.0	90.00	9.37	11,280.0	5,757.8	666.8	5,789.6	0.00	0.00	0.00
17,700.0	90.00	9.37	11,280.0	5,856.5	683.1	5,889.6	0.00	0.00	0.00
17,800.0	90.00	9.37	11,280.0	5,955.2	699.4	5,989.6	0.00	0.00	0.00
17,900.0	90.00	9.37	11,280.0	6,053.8	715.7	6,089.6	0.00	0.00	0.00
18,000.0	90.00	9.37	11,280.0	6,152.5	732.0	6,189.6	0.00	0.00	0.00
18,100.0	90.00	9.37	11,280.0	6,251.2	748.3	6,289.6	0.00	0.00	0.00
18,200.0	90.00	9.37	11,280.0	6,349.8	764.5	6,389.6	0.00	0.00	0.00
18,300.0	90.00	9.37	11,280.0	6,448.5	780.8	6,489.6	0.00	0.00	0.00
18,400.0	90.00	9.37	11,280.0	6,547.2	797.1	6,589.6	0.00	0.00	0.00
18,500.0	90.00	9.37	11,280.0	6,645.8	813.4	6,689.6	0.00	0.00	0.00
18,600.0	90.00	9.37	11,280.0	6,744.5	829.7	6,789.6	0.00	0.00	0.00
18,700.0	90.00	9.37	11,280.0	6,843.2	846.0	6,889.6	0.00	0.00	0.00
18,800.0	90.00	9.37	11,280.0	6,941.8	862.2	6,989.6	0.00	0.00	0.00
18,900.0	90.00	9.37	11,280.0	7,040.5	878.5	7,089.6	0.00	0.00	0.00
19,000.0	90.00	9.37	11,280.0	7,139.2	894.8	7,189.6	0.00	0.00	0.00
19,100.0	90.00	9.37	11,280.0	7,237.8	911.1	7,289.6	0.00	0.00	0.00
19,200.0	90.00	9.37	11,280.0	7,336.5	927.4	7,389.6	0.00	0.00	0.00
19,300.0	90.00	9.37	11,280.0	7,435.2	943.7	7,489.6	0.00	0.00	0.00
19,400.0	90.00	9.37	11,280.0	7,533.8	959.9	7,589.6	0.00	0.00	0.00
19,500.0	90.00	9.37	11,280.0	7,632.5	976.2	7,689.6	0.00	0.00	0.00
19,600.0	90.00	9.37	11,280.0	7,731.2	992.5	7,789.6	0.00	0.00	0.00
19,700.0	90.00	9.37	11,280.0	7,829.8	1,008.8	7,889.6	0.00	0.00	0.00
19,800.0	90.00	9.37	11,280.0	7,928.5	1,025.1	7,989.6	0.00	0.00	0.00
19,900.0	90.00	9.37	11,280.0	8,027.1	1,041.4	8,089.6	0.00	0.00	0.00
20,000.0	90.00	9.37	11,280.0	8,125.8	1,057.6	8,189.6	0.00	0.00	0.00
20,100.0	90.00	9.37	11,280.0	8,224.5	1,073.9	8,289.6	0.00	0.00	0.00
20,200.0	90.00	9.37	11,280.0	8,323.1	1,090.2	8,389.6	0.00	0.00	0.00
20,300.0	90.00	9.37	11,280.0	8,421.8	1,106.5	8,489.6	0.00	0.00	0.00



# XTO Energy

## Planning Report

<b>Database:</b>	LMRKPROD3	<b>Local Co-ordinate Reference:</b>	Well PLU 20-8 Brushy Draw 162H
<b>Company:</b>	Delaware Basin Asset (Plans)	<b>TVD Reference:</b>	RKB(30') @ 3200.0usft
<b>Project:</b>	Eddy County	<b>MD Reference:</b>	RKB(30') @ 3200.0usft
<b>Site:</b>	PLU 20-8 Brushy Draw Pad B	<b>North Reference:</b>	Grid
<b>Well:</b>	PLU 20-8 Brushy Draw 162H	<b>Survey Calculation Method:</b>	Minimum Curvature
<b>Wellbore:</b>	PLU 20-8 Brushy Draw 162H		
<b>Design:</b>	PLU 20-8 Brushy Draw 162H		

Planned Survey									
Measured Depth (usft)	Inclination (°)	Azimuth (°)	Vertical Depth (usft)	+N/-S (usft)	+E/-W (usft)	Vertical Section (usft)	Dogleg Rate (°/100usft)	Build Rate (°/100usft)	Turn Rate (°/100usft)
20,400.0	90.00	9.37	11,280.0	8,520.5	1,122.8	8,589.6	0.00	0.00	0.00
20,500.0	90.00	9.37	11,280.0	8,619.1	1,139.1	8,689.6	0.00	0.00	0.00
20,600.0	90.00	9.37	11,280.0	8,717.8	1,155.3	8,789.6	0.00	0.00	0.00
20,700.0	90.00	9.37	11,280.0	8,816.5	1,171.6	8,889.6	0.00	0.00	0.00
20,800.0	90.00	9.37	11,280.0	8,915.1	1,187.9	8,989.6	0.00	0.00	0.00
20,900.0	90.00	9.37	11,280.0	9,013.8	1,204.2	9,089.6	0.00	0.00	0.00
21,000.0	90.00	9.37	11,280.0	9,112.5	1,220.5	9,189.6	0.00	0.00	0.00
21,100.0	90.00	9.37	11,280.0	9,211.1	1,236.8	9,289.6	0.00	0.00	0.00
21,200.0	90.00	9.37	11,280.0	9,309.8	1,253.0	9,389.6	0.00	0.00	0.00
21,300.0	90.00	9.37	11,280.0	9,408.5	1,269.3	9,489.6	0.00	0.00	0.00
21,400.0	90.00	9.37	11,280.0	9,507.1	1,285.6	9,589.6	0.00	0.00	0.00
21,500.0	90.00	9.37	11,280.0	9,605.8	1,301.9	9,689.6	0.00	0.00	0.00
21,600.0	90.00	9.37	11,280.0	9,704.5	1,318.2	9,789.6	0.00	0.00	0.00
21,700.0	90.00	9.37	11,280.0	9,803.1	1,334.5	9,889.6	0.00	0.00	0.00
21,800.0	90.00	9.37	11,280.0	9,901.8	1,350.7	9,989.6	0.00	0.00	0.00
21,900.0	90.00	9.37	11,280.0	10,000.5	1,367.0	10,089.6	0.00	0.00	0.00
22,000.0	90.00	9.37	11,280.0	10,099.1	1,383.3	10,189.6	0.00	0.00	0.00
22,100.0	90.00	9.37	11,280.0	10,197.8	1,399.6	10,289.6	0.00	0.00	0.00
22,200.0	90.00	9.37	11,280.0	10,296.5	1,415.9	10,389.6	0.00	0.00	0.00
22,300.0	90.00	9.37	11,280.0	10,395.1	1,432.2	10,489.6	0.00	0.00	0.00
22,400.0	90.00	9.37	11,280.0	10,493.8	1,448.4	10,589.6	0.00	0.00	0.00
22,500.0	90.00	9.37	11,280.0	10,592.4	1,464.7	10,689.6	0.00	0.00	0.00
22,600.0	90.00	9.37	11,280.0	10,691.1	1,481.0	10,789.6	0.00	0.00	0.00
22,700.0	90.00	9.37	11,280.0	10,789.8	1,497.3	10,889.6	0.00	0.00	0.00
22,800.0	90.00	9.37	11,280.0	10,888.4	1,513.6	10,989.6	0.00	0.00	0.00
22,900.0	90.00	9.37	11,280.0	10,987.1	1,529.8	11,089.6	0.00	0.00	0.00
23,000.0	90.00	9.37	11,280.0	11,085.8	1,546.1	11,189.6	0.00	0.00	0.00
23,100.0	90.00	9.37	11,280.0	11,184.4	1,562.4	11,289.6	0.00	0.00	0.00
23,178.0	90.00	9.37	11,280.0	11,261.4	1,575.1	11,367.6	0.00	0.00	0.00
Start 277.1 hold at 23178.0 MD									
23,200.0	90.00	9.37	11,280.0	11,283.1	1,578.7	11,389.6	0.00	0.00	0.00
23,300.0	90.00	9.37	11,280.0	11,381.8	1,595.0	11,489.6	0.00	0.00	0.00
23,400.0	90.00	9.37	11,280.0	11,480.4	1,611.3	11,589.6	0.00	0.00	0.00
23,455.1	90.00	9.37	11,280.0	11,534.8	1,620.2	11,644.7	0.00	0.00	0.00
TD at 23455.1									

## XTO Energy

## Planning Report

<b>Database:</b>	LMRKPROD3	<b>Local Co-ordinate Reference:</b>	Well PLU 20-8 Brushy Draw 162H
<b>Company:</b>	Delaware Basin Asset (Plans)	<b>TVD Reference:</b>	RKB(30') @ 3200.0usft
<b>Project:</b>	Eddy County	<b>MD Reference:</b>	RKB(30') @ 3200.0usft
<b>Site:</b>	PLU 20-8 Brushy Draw Pad B	<b>North Reference:</b>	Grid
<b>Well:</b>	PLU 20-8 Brushy Draw 162H	<b>Survey Calculation Method:</b>	Minimum Curvature
<b>Wellbore:</b>	PLU 20-8 Brushy Draw 162H		
<b>Design:</b>	PLU 20-8 Brushy Draw 162H		

Design Targets									
Target Name									
- hit/miss target	Dip Angle	Dip Dir.	TVD	+N/-S	+E/-W	Northing	Easting	Latitude	Longitude
- Shape	(°)	(°)	(usft)	(usft)	(usft)	(usft)	(usft)		
PLU 20-8 Brushy Draw ' - plan misses target center by 1264.9usft at 23150.5usft MD (11280.0 TVD, 11234.2 N, 1570.6 E)	0.00	0.00	11,280.0	11,440.2	322.6	416,300.10	632,837.40	32° 8' 37.673 N	103° 54' 14.936 W
- Point									
PLU 20-8 Brushy Draw ' - plan hits target center	0.00	0.00	11,280.0	3,893.7	359.2	408,753.60	632,874.00	32° 7' 22.989 N	103° 54' 14.860 W
- Point									
PLU 20-8 Brushy Draw ' - plan hits target center	0.00	0.00	11,280.0	-4.3	-284.1	404,855.60	632,230.70	32° 6' 44.439 N	103° 54' 22.520 W
- Point									
PLU 20-8 Brushy Draw ' - plan misses target center by 1311.9usft at 23400.0usft MD (11280.0 TVD, 11480.4 N, 1611.3 E)	0.00	0.00	11,280.0	11,720.2	321.5	416,580.10	632,836.30	32° 8' 40.444 N	103° 54' 14.936 W
- Point									

Plan Annotations					
Measured Depth	Vertical Depth	Local Coordinates			
(usft)	(usft)	+N/-S	+E/-W	Comment	
		(usft)	(usft)		
1,000.0	1,000.0	0.0	0.0	Start Build 2.00	
1,509.2	1,506.6	-39.3	-22.2	Start 4309.0 hold at 1509.2 MD	
5,818.3	5,747.7	-703.1	-396.3	Start Drop -10.00	
5,920.1	5,849.0	-710.9	-400.7	Start 4714.8 hold at 5920.1 MD	
10,634.9	10,563.8	-710.9	-400.7	Start Build 8.00	
11,759.9	11,280.0	-4.3	-284.1	Start 3950.7 hold at 11759.9 MD	
15,710.6	11,280.0	3,893.7	359.2	Start 7467.3 hold at 15710.6 MD	
23,178.0	11,280.0	11,261.4	1,575.1	Start 277.1 hold at 23178.0 MD	
23,455.1	11,280.0	11,534.8	1,620.2	TD at 23455.1	



XTO ENERGY INC  
POTASH

ALL DIMENSIONS APPROXIMATE

DRAWN	DLE	13JUL20
APPRV		

DRAWING NO. **HBE00000357**

## PECOS DISTRICT DRILLING CONDITIONS OF APPROVAL

<b>OPERATOR'S NAME:</b>	XTO Permian Operating LLC
<b>WELL NAME &amp; NO.:</b>	Poker Lake Unit 20-8 BD 162H
<b>LOCATION:</b>	Sec 20-25S-30E-NMP
<b>COUNTY:</b>	Eddy County, New Mexico

*Changes approved through engineering via Sundry 2713493 on 02/24/2023. Any previous COAs not addressed within the updated COAs still apply.*

### COA

H2S	<input checked="" type="radio"/> Yes	<input type="radio"/> No	
Potash	<input checked="" type="radio"/> None	<input type="radio"/> Secretary	<input type="radio"/> R-111-P
Cave/Karst Potential	<input checked="" type="radio"/> Low	<input type="radio"/> Medium	<input type="radio"/> High
Cave/Karst Potential	<input type="radio"/> Critical		
Variance	<input type="radio"/> None	<input checked="" type="radio"/> Flex Hose	<input type="radio"/> Other
Wellhead	<input type="radio"/> Conventional	<input checked="" type="radio"/> Multibowl	<input type="radio"/> Both
Other	<input type="checkbox"/> 4 String Area	<input type="checkbox"/> Capitan Reef	<input type="checkbox"/> WIPP
Other	<input type="checkbox"/> Fluid Filled	<input type="checkbox"/> Cement Squeeze	<input type="checkbox"/> Pilot Hole
Special Requirements	<input type="checkbox"/> Water Disposal	<input type="checkbox"/> COM	<input checked="" type="checkbox"/> Unit

Break Testing	<input checked="" type="radio"/> Yes	<input type="radio"/> No
---------------	--------------------------------------	--------------------------

### A. HYDROGEN SULFIDE

A Hydrogen Sulfide (H2S) Drilling Plan shall be activated 500 feet prior to drilling into the **Corral Canyon / Delaware** formation(s). As a result, the Hydrogen Sulfide area must meet Onshore Order 6 requirements, which includes equipment and personnel/public protection items. If Hydrogen Sulfide is encountered, please provide measured values and formations to the BLM.

### B. CASING

1. The **13-3/8** inch surface casing shall be set at approximately 820 feet (a minimum of 70 feet (Eddy County) into the Rustler Anhydrite and above the salt) and cemented to the surface.
  - a. If cement does not circulate to the surface, the appropriate BLM office shall be notified and a temperature survey utilizing an electronic type temperature survey with surface log readout will be used or a cement bond log shall be run to verify the top of the cement. Temperature survey will be run a minimum of

six hours after pumping cement and ideally between 8-10 hours after completing the cement job.

- b. Wait on cement (WOC) time for a primary cement job will be a minimum of **8 hours** or 500 pounds compressive strength, whichever is greater. (This is to include the lead cement)
  - c. Wait on cement (WOC) time for a remedial job will be a minimum of 4 hours after bringing cement to surface or 500 pounds compressive strength, whichever is greater.
  - d. If cement falls back, remedial cementing will be done prior to drilling out that string.
2. The minimum required fill of cement behind the **9-5/8** inch intermediate casing is:

Operator has proposed a DV tool, the depth may be adjusted as long as the cement is changed proportionally. The DV tool may be cancelled if cement circulates to surface on the first stage.

- First stage to DV tool: Cement to circulate. If cement does not circulate off the DV tool, contact the appropriate BLM office before proceeding with second stage cement job.
- Second stage above DV tool:
  - Cement to surface. If cement does not circulate, contact the appropriate BLM office.

3. The minimum required fill of cement behind the **5-1/2** inch production casing is:

- Cement should tie-back at least **200 feet** into previous casing string. Operator shall provide method of verification.

### C. PRESSURE CONTROL

1. Variance approved to use flex line from BOP to choke manifold. Manufacturer's specification to be readily available. No external damage to flex line. Flex line to be installed as straight as possible (no hard bends).'
2. Operator has proposed a multi-bowl wellhead assembly. This assembly will only be tested when installed on the surface casing. Minimum working pressure of the blowout preventer (BOP) and related equipment (BOPE) required for drilling below the surface casing shoe shall be **10,000 (10M) psi. Variance is approved to use a 5000 (5M) Annular which shall be tested to 5000 (5M) psi.**
  - a. Wellhead shall be installed by manufacturer's representatives, submit documentation with subsequent sundry.

- b. If the welding is performed by a third party, the manufacturer's representative shall monitor the temperature to verify that it does not exceed the maximum temperature of the seal.
- c. Manufacturer representative shall install the test plug for the initial BOP test.
- d. If the cement does not circulate and one inch operations would have been possible with a standard wellhead, the well head shall be cut off, cementing operations performed and another wellhead installed.
- e. Whenever any seal subject to test pressure is broken, all the tests in OOGO2.III.A.2.i must be followed.

#### **D. SPECIAL REQUIREMENT (S)**

##### **Unit Wells**

The well sign for a unit well shall include the unit number in addition to the surface and bottom hole lease numbers. This also applies to participating area numbers. If a participating area has not been established, the operator can use the general unit designation, but will replace the unit number with the participating area number when the sign is replaced.

##### **Commercial Well Determination**

A commercial well determination shall be submitted after production has been established for at least six months.

##### **BOPE Break Testing Variance (Note: For 5M BOPE or less)**

- BOPE Break Testing is ONLY permitted for 5M BOPE or less.
- BOPE Break Testing is NOT permitted to drilling the production hole section.
- While in transfer between wells, the BOPE shall be secured by the hydraulic carrier or cradle.
- Any well control event while drilling require notification to the BLM Petroleum Engineer prior to the commencement of any BOPE Break Testing operations.
- A full BOPE test is required prior to drilling the first deep intermediate hole section. If any subsequent hole interval is deeper than the first, a full BOPE test will be required.
- The BLM is to be contacted (575-361-2822 Eddy County) 4 hours prior to BOPE tests.
- As a minimum, a full BOPE test shall be performed at 21-day intervals.
- In the event any repairs or replacement of the BOPE is required, the BOPE shall test as per Onshore Oil and Gas Order No. 2.

## **GENERAL REQUIREMENTS**

The BLM is to be notified in advance for a representative to witness:

- a. Spudding well (minimum of 24 hours)
- b. Setting and/or Cementing of all casing strings (minimum of 4 hours)
- c. BOPE tests (minimum of 4 hours)

☒ Eddy County

Call the Carlsbad Field Office, 620 East Greene St., Carlsbad, NM 88220,  
(575) 361-2822

☒ Lea County

Call the Hobbs Field Station, 414 West Taylor, Hobbs NM 88240, (575)  
689-5981

1. Unless the production casing has been run and cemented or the well has been properly plugged, the drilling rig shall not be removed from over the hole without prior approval.
  - a. In the event the operator has proposed to drill multiple wells utilizing a skid/walking rig. Operator shall secure the wellbore on the current well, after installing and testing the wellhead, by installing a blind flange of like pressure rating to the wellhead and a pressure gauge that can be monitored while drilling is performed on the other well(s).
  - b. When the operator proposes to set surface casing with Spudder Rig
    - Notify the BLM when moving in and removing the Spudder Rig.
    - Notify the BLM when moving in the 2<sup>nd</sup> Rig. Rig to be moved in within 90 days of notification that Spudder Rig has left the location.
    - BOP/BOPE test to be conducted per Onshore Oil and Gas Order No. 2 as soon as 2nd Rig is rigged up on well.
2. Floor controls are required for 3M or Greater systems. These controls will be on the rig floor, unobstructed, readily accessible to the driller and will be operational at all times during drilling and/or completion activities. Rig floor is defined as the area immediately around the rotary table; the area immediately above the substructure on which the draw works are located, this does not include the dog house or stairway area.
3. The record of the drilling rate along with the GR/N well log run from TD to surface (horizontal well – vertical portion of hole) shall be submitted to the BLM office as well as all other logs run on the borehole 30 days from completion. If available, a digital copy of the logs is to be submitted in addition to the paper copies. The Rustler top and top and bottom of Salt are to be recorded on the Completion Report.

A. CASING

1. Changes to the approved APD casing program need prior approval if the items substituted are of lesser grade or different casing size or are Non-API. The Operator

can exchange the components of the proposal with that of superior strength (i.e. changing from J-55 to N-80, or from 36# to 40#). Changes to the approved cement program need prior approval if the altered cement plan has less volume or strength or if the changes are substantial (i.e. Multistage tool, ECP, etc.). The initial wellhead installed on the well will remain on the well with spools used as needed.

2. Wait on cement (WOC) for Potash Areas: After cementing but before commencing any tests, the casing string shall stand cemented under pressure until both of the following conditions have been met: 1) cement reaches a minimum compressive strength of 500 psi for all cement blends, 2) until cement has been in place at least 24 hours. WOC time will be recorded in the driller's log. The casing integrity test can be done (prior to the cement setting up) immediately after bumping the plug.
3. Wait on cement (WOC) for Water Basin: After cementing but before commencing any tests, the casing string shall stand cemented under pressure until both of the following conditions have been met: 1) cement reaches a minimum compressive strength of 500 psi at the shoe, 2) until cement has been in place at least 8 hours. WOC time will be recorded in the driller's log. See individual casing strings for details regarding lead cement slurry requirements. The casing integrity test can be done (prior to the cement setting up) immediately after bumping the plug.
4. Provide compressive strengths including hours to reach required 500 pounds compressive strength prior to cementing each casing string. Have well specific cement details onsite prior to pumping the cement for each casing string.
5. No pea gravel permitted for remedial or fall back remedial without prior authorization from the BLM engineer.
6. On that portion of any well approved for a 5M BOPE system or greater, a pressure integrity test of each casing shoe shall be performed. Formation at the shoe shall be tested to a minimum of the mud weight equivalent anticipated to control the formation pressure to the next casing depth or at total depth of the well. This test shall be performed before drilling more than 20 feet of new hole.
7. If hardband drill pipe is rotated inside casing, returns will be monitored for metal. If metal is found in samples, drill pipe will be pulled and rubber protectors which have a larger diameter than the tool joints of the drill pipe will be installed prior to continuing drilling operations.
8. Whenever a casing string is cemented in the R-111-P potash area, the NMOCD requirements shall be followed.

#### B. PRESSURE CONTROL

1. All blowout preventer (BOP) and related equipment (BOPE) shall comply with well control requirements as described in Onshore Oil and Gas Order No. 2 and API RP 53 Sec. 17.



2. If a variance is approved for a flexible hose to be installed from the BOP to the choke manifold, the following requirements apply: The flex line must meet the requirements of API 16C. Check condition of flexible line from BOP to choke manifold, replace if exterior is damaged or if line fails test. Line to be as straight as possible with no hard bends and is to be anchored according to Manufacturer's requirements. The flexible hose can be exchanged with a hose of equal size and equal or greater pressure rating. Anchor requirements, specification sheet and hydrostatic pressure test certification matching the hose in service, to be onsite for review. These documents shall be posted in the company man's trailer and on the rig floor.
3. 5M or higher system requires an HCR valve, remote kill line and annular to match. The remote kill line is to be installed prior to testing the system and tested to stack pressure.
4. If the operator has proposed a multi-bowl wellhead assembly in the APD. The following requirements must be met:
  - a. Wellhead shall be installed by manufacturer's representatives, submit documentation with subsequent sundry.
  - b. If the welding is performed by a third party, the manufacturer's representative shall monitor the temperature to verify that it does not exceed the maximum temperature of the seal.
  - c. Manufacturer representative shall install the test plug for the initial BOP test.
  - d. Whenever any seal subject to test pressure is broken, all the tests in OOGO2.III.A.2.i must be followed.
  - e. If the cement does not circulate and one inch operations would have been possible with a standard wellhead, the well head shall be cut off, cementing operations performed and another wellhead installed.
5. The appropriate BLM office shall be notified a minimum of 4 hours in advance for a representative to witness the tests.
  - a. In a water basin, for all casing strings utilizing slips, these are to be set as soon as the crew and rig are ready and any fallback cement remediation has been done. The casing cut-off and BOP installation can be initiated four hours after installing the slips, which will be approximately six hours after bumping the plug. For those casing strings not using slips, the minimum wait time before cut-off is eight hours after bumping the plug. BOP/BOPE testing can begin after cut-off or once cement reaches 500 psi compressive strength (including lead when specified), whichever is greater. However, if the float does not hold, cut-off cannot be initiated until cement reaches 500 psi compressive strength (including lead when specified).

- b. In potash areas, for all casing strings utilizing slips, these are to be set as soon as the crew and rig are ready and any fallback cement remediation has been done. For all casing strings, casing cut-off and BOP installation can be initiated at twelve hours after bumping the plug. However, **no tests** shall commence until the cement has had a minimum of 24 hours setup time, except the casing pressure test can be initiated immediately after bumping the plug (only applies to single stage cement jobs).
- c. The tests shall be done by an independent service company utilizing a test plug not a cup or J-packer. The operator also has the option of utilizing an independent tester to test without a plug (i.e. against the casing) pursuant to Onshore Order 2 with the pressure not to exceed 70% of the burst rating for the casing. Any test against the casing must meet the WOC time for water basin (8 hours) or potash (24 hours) or 500 pounds compressive strength, whichever is greater, prior to initiating the test (see casing segment as lead cement may be critical item).
- d. The test shall be run on a 5000 psi chart for a 2-3M BOP/BOP, on a 10000 psi chart for a 5M BOP/BOPE and on a 15000 psi chart for a 10M BOP/BOPE. If a linear chart is used, it shall be a one hour chart. A circular chart shall have a maximum 2 hour clock. If a twelve hour or twenty-four hour chart is used, tester shall make a notation that it is run with a two hour clock.
- e. The results of the test shall be reported to the appropriate BLM office.
- f. All tests are required to be recorded on a calibrated test chart. A copy of the BOP/BOPE test chart and a copy of independent service company test will be submitted to the appropriate BLM office.
- g. The BOP/BOPE test shall include a low pressure test from 250 to 300 psi. The test will be held for a minimum of 10 minutes if test is done with a test plug and 30 minutes without a test plug. This test shall be performed prior to the test at full stack pressure.
- h. BOP/BOPE must be tested by an independent service company within 500 feet of the top of the Wolfcamp formation if the time between the setting of the intermediate casing and reaching this depth exceeds 20 days. This test does not exclude the test prior to drilling out the casing shoe as per Onshore Order No. 2.

#### C. DRILLING MUD

Mud system monitoring equipment, with derrick floor indicators and visual and audio alarms, shall be operating before drilling into the Wolfcamp formation, and shall be used until production casing is run and cemented.

D. WASTE MATERIAL AND FLUIDS

All waste (i.e. drilling fluids, trash, salts, chemicals, sewage, gray water, etc.) created as a result of drilling operations and completion operations shall be safely contained and disposed of properly at a waste disposal facility. No waste material or fluid shall be disposed of on the well location or surrounding area.

Porto-johns and trash containers will be on-location during fracturing operations or any other crew-intensive operations.

**District I**  
1625 N. French Dr., Hobbs, NM 88240  
Phone:(575) 393-6161 Fax:(575) 393-0720  
**District II**  
811 S. First St., Artesia, NM 88210  
Phone:(575) 748-1283 Fax:(575) 748-9720  
**District III**  
1000 Rio Brazos Rd., Aztec, NM 87410  
Phone:(505) 334-6178 Fax:(505) 334-6170  
**District IV**  
1220 S. St Francis Dr., Santa Fe, NM 87505  
Phone:(505) 476-3470 Fax:(505) 476-3462

State of New Mexico  
Energy, Minerals and Natural Resources  
Oil Conservation Division  
1220 S. St Francis Dr.  
Santa Fe, NM 87505

CONDITIONS  
  
Action 192196

CONDITIONS

Operator: XTO PERMIAN OPERATING LLC. 6401 HOLIDAY HILL ROAD MIDLAND, TX 79707	OGRID: 373075
	Action Number: 192196
	Action Type: [C-103] NOI Change of Plans (C-103A)

CONDITIONS

Created By	Condition	Condition Date
kpickford	• NSP Will require administrative order for non-standard spacing unit	3/9/2023
kpickford	Adhere to previous NMOCD Conditions of Approval	3/9/2023