

Submit One Copy To Appropriate District Office
District I
1625 N. French Dr., Hobbs, NM 88240
District II
811 S. First St., Artesia, NM 88210
District III
1000 Rio Brazos Rd., Aztec, NM 87410
District IV
1220 S. St. Francis Dr., Santa Fe, NM 87505

State of New Mexico
Energy, Minerals and Natural Resources
OIL CONSERVATION DIVISION
1220 South St. Francis Dr.
Santa Fe, NM 87505

Form C-103
Revised November 3, 2011

WELL API NO.
30-025-07119
5. Indicate Type of Lease
STATE [X] FEE []
6. State Oil & Gas Lease No.
7. Lease Name or Unit Agreement Name
Lawton State
8. Well Number 001
9. OGRID Number
227103
10. Pool name or Wildcat
Gladiola; Devonian
11. Elevation (Show whether DR, RKB, RT, GR, etc.)

SUNDRY NOTICES AND REPORTS ON WELLS
(DO NOT USE THIS FORM FOR PROPOSALS TO DRILL OR TO DEEPEN OR PLUG BACK TO A DIFFERENT RESERVOIR. USE "APPLICATION FOR PERMIT" (FORM C-101) FOR SUCH PROPOSALS.)
1. Type of Well: [X] Oil Well [] Gas Well [] Other
2. Name of Operator
Platinum Exploration
3. Address of Operator
550 W Texas, Suit 500, Midland, TX 79701
4. Well Location
Unit Letter M : 660 feet from the S line and 660 feet from the W line
Section 32 Township 11S Range 38E NMPM County Chaves

12. Check Appropriate Box to Indicate Nature of Notice, Report or Other Data
NOTICE OF INTENTION TO:
PERFORM REMEDIAL WORK [] PLUG AND ABANDON []
TEMPORARILY ABANDON [] CHANGE PLANS []
PULL OR ALTER CASING [] MULTIPLE COMPL []
OTHER: []
SUBSEQUENT REPORT OF:
REMEDIAL WORK [] ALTERING CASING []
COMMENCE DRILLING OPNS. [] P AND A [X]
CASING/CEMENT JOB []
[X] Location is ready for OCD inspection after P&A

- [X] All pits have been remediated in compliance with OCD rules and the terms of the Operator's pit permit and closure plan.
[X] Rat hole and cellar have been filled and leveled. Cathodic protection holes have been properly abandoned.
[X] A steel marker at least 4" in diameter and at least 4' above ground level has been set in concrete. It shows the

OPERATOR NAME, LEASE NAME, WELL NUMBER, API NUMBER, QUARTER/QUARTER LOCATION OR UNIT LETTER, SECTION, TOWNSHIP, AND RANGE. All INFORMATION HAS BEEN WELDED OR PERMANENTLY STAMPED ON THE MARKER'S SURFACE.

- [] The location has been leveled as nearly as possible to original ground contour and has been cleared of all junk, trash, flow lines and other production equipment.
[] Anchors, dead men, tie downs and risers have been cut off at least two feet below ground level.
[] If this is a one-well lease or last remaining well on lease, the battery and pit location(s) have been remediated in compliance with OCD rules and the terms of the Operator's pit permit and closure plan. All flow lines, production equipment and junk have been removed from lease and well location.
[] All metal bolts and other materials have been removed. Portable bases have been removed. (Poured onsite concrete bases do not have to be removed.)
[] All other environmental concerns have been addressed as per OCD rules.
[] Pipelines and flow lines have been abandoned in accordance with 19.15.35.10 NMAC. All fluids have been removed from non-retrieved flow lines and pipelines.
[] If this is a one-well lease or last remaining well on lease: all electrical service poles and lines have been removed from lease and well location, except for utility's distribution infrastructure.

When all work has been completed, return this form to the appropriate District office to schedule an inspection.

SIGNATURE _____ TITLE_ Authorized Representative DATE 12/20/22
TYPE OR PRINT NAME _Drake McCulloch E-MAIL: drake@dwsrigns.com PHONE (505) 320-1180
For State Use Only

APPROVED BY
Released to Imagin
Accepted for record - NMOCD
JRH 05/04/2023

TITLE _____ DATE _____

Platinum Exploration

Plug And Abandonment End Of Well Report

Lawton State #001

660' FSL & 660' FWL, Section 32, 11S, 38E

Chaves County, NM / API 30-025-07119

Work Summary:

- 11/30/22** Made BLM and NMOCD P&A operations notifications at 9:00 AM MST.
- 12/01/22** Arrived on location and held safety meeting. R/U P&A rig. Checked well pressures: Tubing 0 psi, Casing: 5 psi, Bradenhead: 0 psi. Bled down well. N/D wellhead. N/U BOP and function tested. Pulled out tubing hanger. Found out tubing was 2-2/8" hydride tubing. Reinstalled tubing hanger. Secured and shut in well for the day.
- 12/02/22** Arrived on location and held safety meeting. Checked well pressures: Tubing 0 psi, Casing: 10 psi, Bradenhead: 0 psi. Bled down well. Unseat tubing hanger. Changed out elevators. L/D 29 joints of 2-7/8" hidrill tubing. Changed elevators. TOO H with 62 joints of 2-7/8" tubing. The decision was made to L/D all tubing. 87 joints were L/D on trailer and 167 joints on the ground. Total tubing was 254 joints. Spot in a fill up frac tanks. Secured and shut in well for the day.
- 12/03/22** Arrived on location and held safety meeting. Checked well pressures: Tubing 0 psi, Casing: 0 psi, Bradenhead: 0 psi. Bled down well. Loaded tubing onto trailer. R/U wireline services. Run gage ring. P/U CIBP. Ran in hole with CIBP and set it at 11,906'. While testing CIBP rope socket and collar indicator parted. POOH. R/D wireline services. Wait on work string. Secured and shut in well for the day.
- 12/08/22** Arrived on location and held safety meeting. Checked well pressures: Tubing 0 psi, Casing: 50 psi, Bradenhead: 0 psi. Waited on

tubing. Prepped and tallied 2-7/8" work string. Strapped tubing from trailer into hole to 11,629'. Secured and shut in well for the day.

- 12/09/22** Arrived on location and held safety meeting. Checked well pressures: Tubing 0 psi, Casing: 50 psi, Bradenhead: 0 psi. Bled down well. Tagged top of fish at 11,953'. Tie back unit. Latched onto fish. Puled at 100,000 lbs and fish came loose. L/D 10 joints. Tie rig back to double line and TOO H with 4500' of tubing. Secured and shut in well for the day
- 12/10/22** Arrived on location and held safety meeting. Checked well pressures: Tubing 0 psi, Casing: 0 psi, Bradenhead: 0 psi. Bled down well. Continue TOO H with fish. Wait on wireline. R/U wireline services. RIH and set CIBP at 11,906'. POOH and R/D wireline. TIH to 11,033. Secured and shut in well for the day.
- 12/11/22** Arrived on location and held safety meeting. Checked well pressures: Tubing 0 psi, Casing: 0 psi, Bradenhead: 0 psi. Bled down well. TIH and tagged at 11,906'. Circulated hole with 2.5 bbls, pumped 257 bbls total. Attempted to pressure test casing at 800 PSI but was unsuccessful. R/U cementing services. Pumped plug #1 from 11,906' to 11,677'. R/D cementers. L/D 8 joints of tubing and TOO H. R/U wireline services. RIH and logged well. POOH. R/D wireline services. Secured and shut in well for the day.
- 12/12/22** Arrived on location and held safety meeting. Checked well pressures: Tubing 0 psi, Casing: 0 psi, Bradenhead: 0 psi. Bled down well. TIH and tagged Plug #1 at 11,659'. Attempted to pressure test casing but was unsuccessful. Pumped salt get spacer from 11,659' to 11,400'. L/D 8 joints. R/U cementing services. Pumped plug #2 from 11,400' to approximately 11,171'. R/D cementing services. L/D 11 joints and TOO H. WOC overnight. Secured and shut in well for the day.
- 12/13/22** Arrived on location and held safety meeting. Checked well pressures: Tubing 0 psi, Casing: 0 psi, Bradenhead: 0 psi. Bled down well. TIH and tagged top of Plug #2 at 11,190' to cover the Mississippian and Pen formation tops. Attempted to pressure test casing but was unsuccessful. Pumped a salt/gel spacer from 11,190' to 9432'. L/D 54 joints. R/U cementing services. Pumped plug #3 from 9432' to approximately 9000' to cover the Wolfcamp and Abo formation tops. R/D cementing services. L/D 14 joints and TOO H. WOC 4 hours. TIH and tagged top of plug 9010'. Successfully pressure tested casing to 800 PSI. Pumped salt/gel spacer from 9010 to 4645. L/D 90 joints. Secured and shut in well for the day.

- 12/14/22** Arrived on location and held safety meeting. Checked well pressures: Tubing 0 psi, Casing: 0 psi, Bradenhead: 0 psi. Bled down well. L/D 44 joints and TOOH. R/U wireline services. RIH and perforated at 4620'. R/D wireline. Attempted to get injection rate but was unsuccessful. TIH to 4709'. R/U cementing services. Pumped plug #4 from 4709 to approximately 3940' to cover the San Andres, Grayburg formation tops and the intermediate shoe. R/D cementing services. L/D 24 joints and TOOH. Put 600 psi in casing. WOC overnight. Secured and shut in well for the day.
- 12/15/22** Arrived on location and held safety meeting. Checked well pressures: Tubing 0 psi, Casing: 0 psi, Bradenhead: 0 psi. Bled down well. TIH and tagged TOC at 3738'. TOOH. Install 5.5" drill bit and TIH to 3738'. Drove to Hobbs and picked up a power swivel. R/U power swivel drilled out cement from 3738' to 3748'. P/U tubing with power swivel and tagged at 3950'. Circulated hole and R/D power swivel. L/D 6 joints. Secured and shut in well for the day.
- 12/16/22** Arrived on location and held safety meeting. Checked well pressures: Tubing 0 psi, Casing: 0 psi, Bradenhead: 0 psi. Bled down well. TOOH and removed bit. TIH to 3950'. Successfully pressure tested casing to 800 psi. Pumped salt gel spacer from 3950' to 3805'. L/D 4 joints. R/U cementing services. Pumped plug #5 from 3805' to 3655'. R/D cementing services. L/D 5 joints. Reverse circulated at 3640'. Pumped salt gel spacer from 3655' to 3230'. L/D 13 joints and TOOH. R/U wire line services. RIH and perforated at 3230'. POOH. Successfully established injection rate, fluid circulated through BH valve. TIH to 3280'. R/U cementing services. Pumped plug #6 from 3280' to approximately 2930'. L/D 12 joints. Reverse circulated at 2891' and TOOH. WOC overnight. Secured and shut in well for the day.
- 12/17/22** Arrived on location and held safety meeting. Checked well pressures: Tubing 0 psi, Casing: 0 psi, Bradenhead: 0 psi. Bled down well. TIH and tagged top of plug #6 at 2891'. Successfully pressure tested casing. Pumped salt/gel spacer from 2891' to 2350'. L/D 15 joints and TOOH. R/U wireline services. RIH and perforated at 2350'. POOH. Successfully established injection rate through BH. TIH to 2403. R/U cementing services. Pumped plug #7 from 2403' to approximately 2120'. L/D 9 joints and TOOH. Put 500 PSI on casing. WOC 4 hours. TIH and tagged top of plug #7 at 2105'. Successfully pressure tested casing. R/U Pumped salt/gel spacer from 2105' to 420'. R/U wireline services. RIH and perforated at 420'. POOH. Successfully established injection rate through BH valve. Secured and shut in well for the day.

12/18/22 Arrived on location and held safety meeting. Checked well pressures: Tubing 0 psi, Casing: 0 psi, Bradenhead: 0 psi. Bled down well. R/U cementing services. Pumped cement down 5.5" casing to 420' and out BH at surface. R/D cementing services. R/D floor, ND BOP, NU WH. WOC 4 hours. R/U NuWave water jet cutter. Cut off wellhead. R/D NuWave. Installed marker per all NMOCD regulations. R/D unit and all equipment. MOL.

Plug Summary:

Plug #1: (Perforations and Devonian Formation Top, 11,906'-11,659', 25 Sacks Class H Cement)

R/U wireline services. RIH and set CIBP at 11906'. Pumped plug #1 from 11,906' to 11,677'. R/D cementers. L/D 8 joints of tubing and TOO. TIH and tagged Plug #1 at 11,659'.

Plug #2: (Pen and Mississippian Formation Tops, 11,400'-11,190', 25 Sacks Class H Cement)

Pumped salt get spacer from 11,659' to 11,400'. L/D 8 joints. R/U cementing services. Pumped plug #2 from 11,400' to approximately 11,171'. R/D cementing services. L/D 11 joints and TOO. WOC overnight. TIH and tagged top of Plug #2 at 11,190' to cover the Mississippian and Pen formation tops.

Plug #3: (Wolfcamp and Abo Formation Tops, 9,432'-9,010", 48 Sacks Class H Cement)

Pumped a salt/gel spacer from 11,190' to 9432'. L/D 54 joints. R/U cementing services. Pumped plug #3 from 9432' to approximately 9000' to cover the Wolfcamp and Abo formation tops. R/D cementing services. L/D 14 joints and TOO. WOC 4 hours. TIH and tagged top of plug 9010'. Successfully pressure tested casing to 800 PSI.

Plug #4: (San Andres and Grayburg Formation Tops, and Intermediate Casing Shoe, 4,709'-3,950', 110 Sacks Type I/II Cement (60 sx inside, 50 sx outside))

R/U wireline services. RIH and perforated at 4620'. R/D wireline. Attempted to get injection rate but was unsuccessful. TIH to 4709'. R/U cementing services. Pumped plug #4 from 4709 to approximately 3940' to cover the San Andres, Grayburg formation tops and the intermediate shoe. Put 600 psi in casing. WOC overnight. TIH and tagged TOC at 3738'. TOO. Install 5.5" drill bit and TIH to 3738'. Drove to Hobbs and picked up a power swivel.

R/U power swivel drilled out cement from 3738' to 3748'. P/U tubing with power swivel and tagged at 3950'.

Plug #5: (Queen Formation Top 3,805-3,655', 46 Sacks Type I/II Cement)

TIH to 3950'. Successfully pressure tested casing to 800 psi. Pumped salt gel spacer from 3950' to 3805'. L/D 4 joints. R/U cementing services. Pumped plug #5 from 3805' to 3655'.

Plug #6: (Seven Rivers and Yates Formation Tops, 3,280' to 2,891', 186 Sacks Type I/II Cement (106 sx inside, 76' outside))

R/U wire line services. RIH and perforated at 3230'. POOH. Successfully established injection rate, fluid circulated through BH valve. TIH to 3280'. R/U cementing services. Pumped plug #6 from 3280' to approximately 2930'. L/D 12 joints. Reverse circulated at 2891' and TOOH. WOC overnight. TIH and tagged top of plug #6 at 2891'. Successfully pressure tested casing.

Plug #7: (Salt and Anhy Formation Tops, 2,403' to 2,105', 80 Sacks Type I/II Cement (30 sx inside, 50 sx outside))

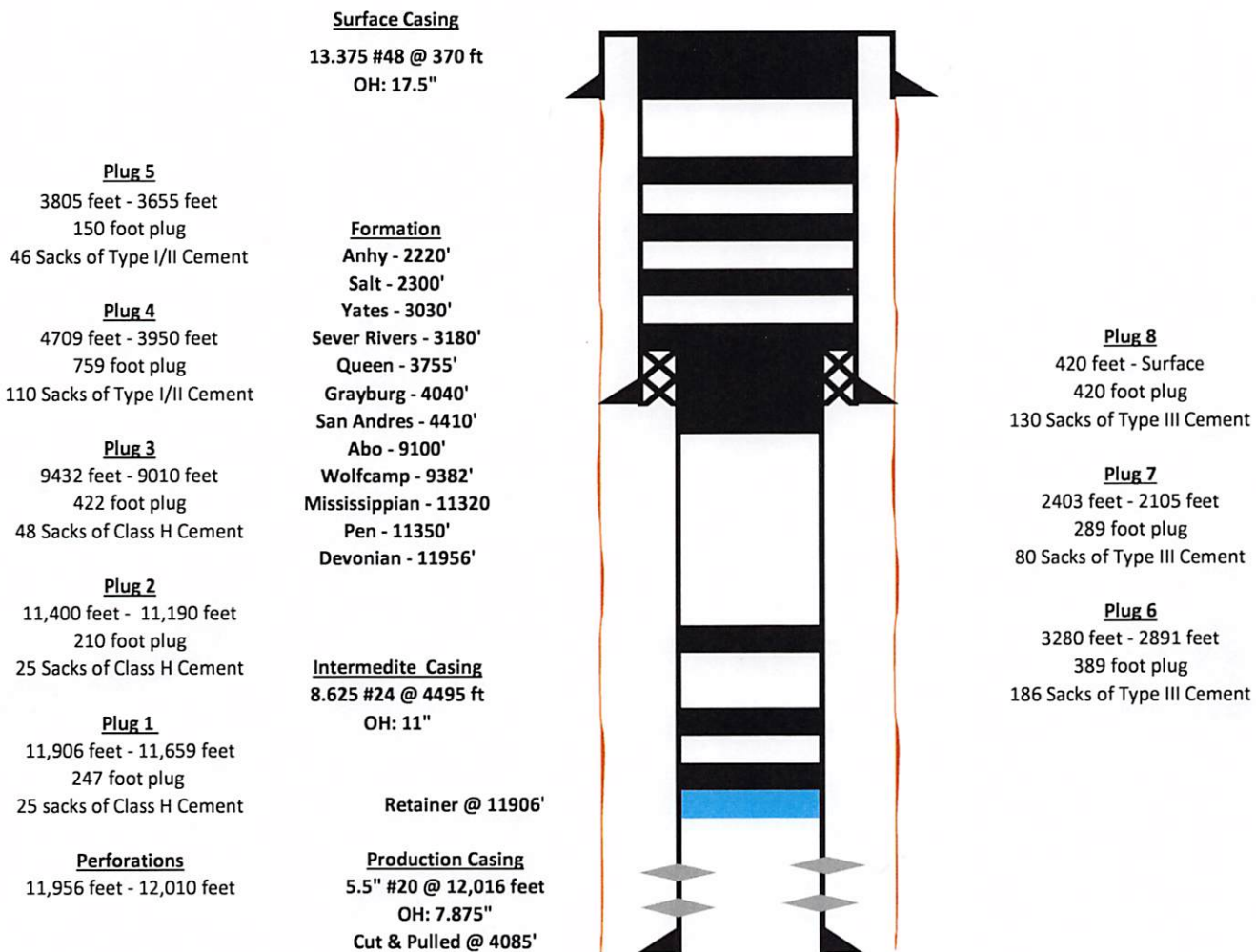
R/U wireline services. RIH and perforated at 2350'. POOH. Successfully established injection rate through BH. TIH to 2403. R/U cementing services. Pumped plug #7 from 2403' to approximately 2120'. L/D 9 joints and TOOH. Put 500 PSI on casing. WOC 4 hours. TIH and tagged top of plug #7 at 2105'. Successfully pressure tested casing.

Plug #8: (Surface Casing Shoe, 420' to Surface', 130 Sacks Type I/II Cement (44 sx inside, 86 sx outside))

R/U wireline services. RIH and perforated at 420'. POOH. Successfully established injection rate through BH valve. R/U cementing services. Pumped cement down 5.5" casing to 420' and out BH at surface. R/D cementing services. R/D floor, ND BOP, NU WH. WOC 4 hours. R/U NuWave water jet cutter. Cut off wellhead. R/D NuWave. Installed marker per all NMOCD regulations. R/D unit and all equipment.

Completed Wellbore Diagram

Platinum Exploration
 Lawton State #001
 API: 30-025-07119
 Hobbs, New Mexico



Surface Casing
 13.375 #48 @ 370 ft
 OH: 17.5"

Formation
 Anhy - 2220'
 Salt - 2300'
 Yates - 3030'
 Sever Rivers - 3180'
 Queen - 3755'
 Grayburg - 4040'
 San Andres - 4410'
 Abo - 9100'
 Wolfcamp - 9382'
 Mississippian - 11320'
 Pen - 11350'
 Devonian - 11956'

Intermedite Casing
 8.625 #24 @ 4495 ft
 OH: 11"

Retainer @ 11906'

Production Casing
 5.5" #20 @ 12,016 feet
 OH: 7.875"
 Cut & Pulled @ 4085'

Plug 5
 3805 feet - 3655 feet
 150 foot plug
 46 Sacks of Type I/II Cement

Plug 4
 4709 feet - 3950 feet
 759 foot plug
 110 Sacks of Type I/II Cement

Plug 3
 9432 feet - 9010 feet
 422 foot plug
 48 Sacks of Class H Cement

Plug 2
 11,400 feet - 11,190 feet
 210 foot plug
 25 Sacks of Class H Cement

Plug 1
 11,906 feet - 11,659 feet
 247 foot plug
 25 sacks of Class H Cement

Perforations
 11,956 feet - 12,010 feet

Plug 8
 420 feet - Surface
 420 foot plug
 130 Sacks of Type III Cement

Plug 7
 2403 feet - 2105 feet
 289 foot plug
 80 Sacks of Type III Cement

Plug 6
 3280 feet - 2891 feet
 389 foot plug
 186 Sacks of Type III Cement

District I
 1625 N. French Dr., Hobbs, NM 88240
 Phone:(575) 393-6161 Fax:(575) 393-0720

District II
 811 S. First St., Artesia, NM 88210
 Phone:(575) 748-1283 Fax:(575) 748-9720

District III
 1000 Rio Brazos Rd., Aztec, NM 87410
 Phone:(505) 334-6178 Fax:(505) 334-6170

District IV
 1220 S. St Francis Dr., Santa Fe, NM 87505
 Phone:(505) 476-3470 Fax:(505) 476-3462

State of New Mexico
Energy, Minerals and Natural Resources
Oil Conservation Division
1220 S. St Francis Dr.
Santa Fe, NM 87505

CONDITIONS

Action 181417

CONDITIONS

Operator: J.A. Drake Well Service Inc. 607 W Pinon Farmington, NM 87401	OGRID: 330485
	Action Number: 181417
	Action Type: [C-103] Sub. Plugging (C-103P)

CONDITIONS

Created By	Condition	Condition Date
john.harrison	None	5/4/2023