

Submit a Copy To Appropriate District
Office
District I – (575) 393-6161
1625 N. French Dr., Hobbs, NM 88240
District II – (575) 748-1283
811 S. First St., Artesia, NM 88210
District III – (505) 334-6178
1000 Rio Brazos Rd., Aztec, NM 87410
District IV – (505) 476-3460
1220 S. St. Francis Dr., Santa Fe, NM
87505

State of New Mexico
Energy, Minerals and Natural Resources

Form C-103
Revised July 18, 2013

OIL CONSERVATION DIVISION
1220 South St. Francis Dr.
Santa Fe, NM 87505

| |
|---|
| WELL API NO. 30-015-53278 |
| 5. Indicate Type of Lease STATE <input checked="" type="checkbox"/> FEE <input type="checkbox"/> |
| 6. State Oil & Gas Lease No. 326058 |
| 7. Lease Name or Unit Agreement Name Vanadium 32 State |
| 8. Well Number 175H |
| 9. OGRID Number 16696 |
| 10. Pool name or Wildcat WC-015 G-08 S233135D; WOLFCAMP |

| | |
|--|--|
| <p>SUNDRY NOTICES AND REPORTS ON WELLS (DO NOT USE THIS FORM FOR PROPOSALS TO DRILL OR TO DEEPEN OR PLUG BACK TO A DIFFERENT RESERVOIR. USE "APPLICATION FOR PERMIT" (FORM C-101) FOR SUCH PROPOSALS.)</p> | |
| 1. Type of Well: Oil Well <input checked="" type="checkbox"/> Gas Well <input type="checkbox"/> Other <input type="checkbox"/> | |
| 2. Name of Operator OXY USA INC. | |
| 3. Address of Operator P.O. Box 4294, Houston, TX 77210 | |
| 4. Well Location Unit Letter <u>O</u> : <u>500</u> feet from the <u>SOUTH</u> line and <u>1417</u> feet from the <u>EAST</u> line Section <u>29</u> Township <u>23S</u> Range <u>31E</u> NMPM County <u>EDDY</u> | |
| 11. Elevation (Show whether DR, RKB, RT, GR, etc.) 3359' (GL) | |

12. Check Appropriate Box to Indicate Nature of Notice, Report or Other Data

| | | | |
|--|--|--|--|
| <p>NOTICE OF INTENTION TO:</p> <p>PERFORM REMEDIAL WORK <input type="checkbox"/> PLUG AND ABANDON <input type="checkbox"/> TEMPORARILY ABANDON <input type="checkbox"/> CHANGE PLANS <input checked="" type="checkbox"/> PULL OR ALTER CASING <input type="checkbox"/> MULTIPLE COMPL <input type="checkbox"/> DOWNHOLE COMMINGLE <input type="checkbox"/> CLOSED-LOOP SYSTEM <input type="checkbox"/> OTHER: <input type="checkbox"/></p> | | <p>SUBSEQUENT REPORT OF:</p> <p>REMEDIAL WORK <input type="checkbox"/> ALTERING CASING <input type="checkbox"/> COMMENCE DRILLING OPNS. <input type="checkbox"/> P AND A <input type="checkbox"/> CASING/CEMENT JOB <input type="checkbox"/> OTHER: <input type="checkbox"/></p> | |
|--|--|--|--|

13. Describe proposed or completed operations. (Clearly state all pertinent details, and give pertinent dates, including estimated date of starting any proposed work). SEE RULE 19.15.7.14 NMAC. For Multiple Completions: Attach wellbore diagram of proposed completion or recompletion.

Requesting name change:

Old Name: Vanadium 32 State 175H
New Name: Vanadium 32 State Com 175H

Spud Date:

Rig Release Date:

I hereby certify that the information above is true and complete to the best of my knowledge and belief.

SIGNATURE Roni Mathew TITLE Regulatory Advisor DATE 04/18/2023

Type or print name Roni Mathew E-mail address: roni_mathew@oxy.com PHONE: 713-215-7827

For State Use Only

APPROVED BY: John Garcia TITLE Petroleum Specialist Supervisor DATE 5/17/23

Conditions of Approval (if any):

District I
1625 N. French Dr., Hobbs, NM 88240
Phone: (575) 393-6161 Fax: (575) 393-0720
District II
811 S. First St., Artesia, NM 88210
Phone: (575) 748-1283 Fax: (575) 748-9720
District III
1000 Rio Brazos Road, Aztec, NM 87410
Phone: (505) 334-6178 Fax: (505) 334-6170
District IV
1220 S. St. Francis Dr., Santa Fe, NM 87505
Phone: (505) 476-3460 Fax: (505) 476-3462

State of New Mexico
Energy, Minerals & Natural Resources Department
OIL CONSERVATION DIVISION
1220 South St. Francis Dr.
Santa Fe, NM 87505

Form C-102
Revised August 1, 2011
Submit one copy to appropriate
District Office

☒ AMENDED REPORT

WELL LOCATION AND ACREAGE DEDICATION PLAT

| | | |
|--|---|--|
| ¹ API Number 30-015-53278 | ² Pool Code 98236 | ³ Pool Name WC-015 G-08 S233135D; WOLFCAMP |
| ⁴ Property Code 326058 XX 334034 | ⁵ Property Name VANADIUM 32 STATE COM | ⁶ Well Number 175H |
| ⁷ OGRID No. 16696 | ⁸ Operator Name OXY USA INC. | ⁹ Elevation 3359.7' |

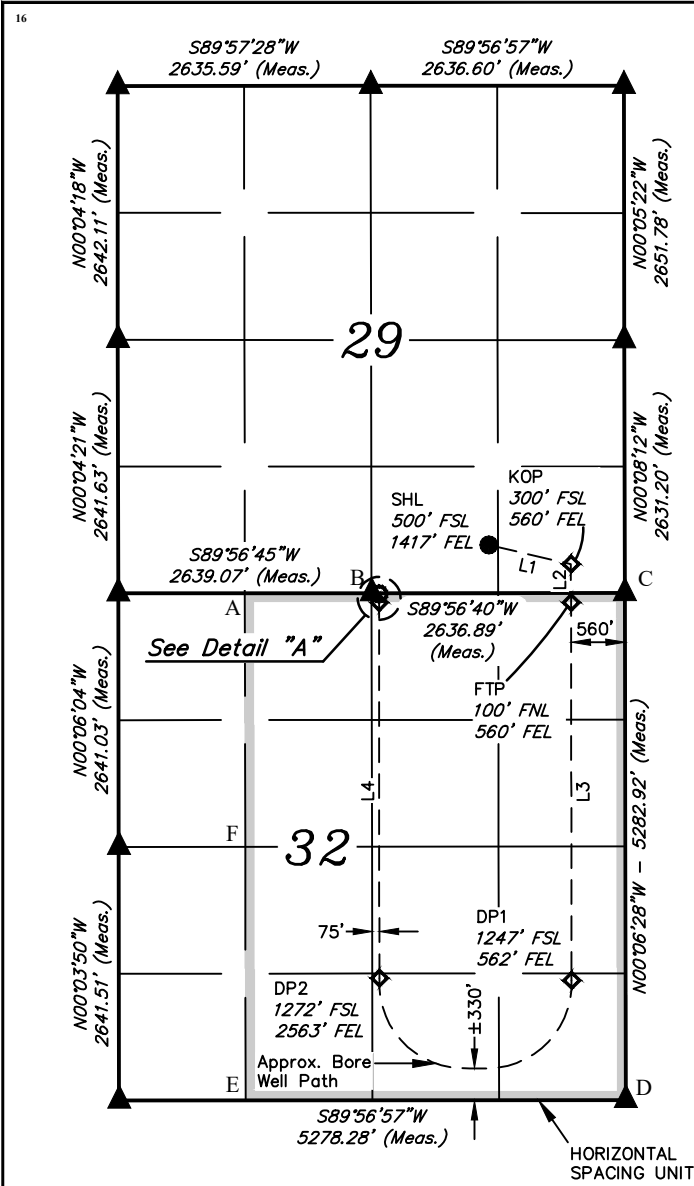
¹⁰ Surface Location

| | | | | | | | | | |
|--------------------|---------------|-----------------|--------------|---------|----------------------|---------------------------|-----------------------|------------------------|----------------|
| UL or lot no. O | Section 29 | Township 23S | Range 31E | Lot Idn | Feet from the 500 | North/South line SOUTH | Feet from the 1417 | East/West line EAST | County EDDY |
|--------------------|---------------|-----------------|--------------|---------|----------------------|---------------------------|-----------------------|------------------------|----------------|

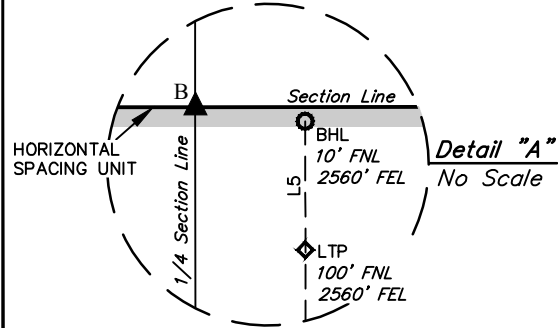
¹¹ Bottom Hole Location If Different From Surface

| | | | | | | | | | |
|--------------------------------------|-------------------------------|----------------------------------|-------------------------|---------|---------------------|---------------------------|-----------------------|------------------------|----------------|
| UL or lot no. C | Section 32 | Township 23S | Range 31E | Lot Idn | Feet from the 10 | North/South line NORTH | Feet from the 2560 | East/West line EAST | County EDDY |
| ¹² Dedicated Acres 480 | ¹³ Joint or Infill | ¹⁴ Consolidation Code | ¹⁵ Order No. | | | | | | |

No allowable will be assigned to this completion until all interests have been consolidated or a non-standard unit has been approved by the division.



| LINE TABLE | | |
|------------|-------------|----------|
| LINE | DIRECTION | LENGTH |
| L1 | S76°55'37"E | 879.95' |
| L2 | S00°07'46"E | 400.00' |
| L3 | S00°05'04"E | 3936.00' |
| L4 | N00°03'27"W | 3910.72' |
| L5 | N00°06'28"W | 90.00' |



| |
|--|
| NAD 83 (SURFACE HOLE LOCATION) LATITUDE = 32°16'10.39" (32.269552°) LONGITUDE = 103°47'45.15" (103.795875°) |
| NAD 27 (SURFACE HOLE LOCATION) LATITUDE = 32°16'09.94" (32.269429°) LONGITUDE = 103°47'43.40" (103.795389°) |
| STATE PLANE NAD 83 (N.M. EAST) N: 462212.05' E: 707454.93' |
| STATE PLANE NAD 27 (N.M. EAST) N: 462152.74' E: 666271.38' |
| NAD 83 (KICK OFF POINT) LATITUDE = 32°16'08.41" (32.269003°) LONGITUDE = 103°47'35.17" (103.793103°) |
| NAD 27 (KICK OFF POINT) LATITUDE = 32°16'07.97" (32.268880°) LONGITUDE = 103°47'33.42" (103.792617°) |
| STATE PLANE NAD 83 (N.M. EAST) N: 462016.64' E: 708312.74' |
| STATE PLANE NAD 27 (N.M. EAST) N: 461957.34' E: 667129.18' |
| NAD 83 (FIRST TAKE POINT) LATITUDE = 32°16'04.45" (32.267904°) LONGITUDE = 103°47'35.16" (103.793101°) |
| NAD 27 (FIRST TAKE POINT) LATITUDE = 32°16'04.01" (32.267781°) LONGITUDE = 103°47'33.42" (103.792616°) |
| STATE PLANE NAD 83 (N.M. EAST) N: 461616.73' E: 708315.32' |
| STATE PLANE NAD 27 (N.M. EAST) N: 461557.43' E: 667131.75' |
| NAD 83 (DEFLECTION POINT 1) LATITUDE = 32°15'25.51" (32.257087°) LONGITUDE = 103°47'35.14" (103.793093°) |
| NAD 27 (DEFLECTION POINT 1) LATITUDE = 32°15'25.07" (32.256964°) LONGITUDE = 103°47'33.39" (103.792608°) |
| STATE PLANE NAD 83 (N.M. EAST) N: 457681.55' E: 708337.62' |
| STATE PLANE NAD 27 (N.M. EAST) N: 457622.36' E: 667153.94' |
| NAD 83 (DEFLECTION POINT 2) LATITUDE = 32°15'25.76" (32.257155°) LONGITUDE = 103°47'58.44" (103.799568°) |
| NAD 27 (DEFLECTION POINT 2) LATITUDE = 32°15'25.32" (32.257032°) LONGITUDE = 103°47'56.70" (103.799082°) |
| STATE PLANE NAD 83 (N.M. EAST) N: 457696.49' E: 706336.04' |
| STATE PLANE NAD 27 (N.M. EAST) N: 457637.30' E: 665152.36' |
| NAD 83 (LAST TAKE POINT) LATITUDE = 32°16'04.45" (32.267903°) LONGITUDE = 103°47'58.45" (103.799571°) |
| NAD 27 (LAST TAKE POINT) LATITUDE = 32°16'04.01" (32.267780°) LONGITUDE = 103°47'56.70" (103.799085°) |
| STATE PLANE NAD 83 (N.M. EAST) N: 461606.41' E: 706315.73' |
| STATE PLANE NAD 27 (N.M. EAST) N: 461547.11' E: 665132.17' |
| NAD 83 (BOTTOM HOLE LOCATION) LATITUDE = 32°16'05.34" (32.268150°) LONGITUDE = 103°47'58.46" (103.799571°) |
| NAD 27 (BOTTOM HOLE LOCATION) LATITUDE = 32°16'04.90" (32.268027°) LONGITUDE = 103°47'56.71" (103.799085°) |
| STATE PLANE NAD 83 (N.M. EAST) N: 461696.39' E: 706315.18' |
| STATE PLANE NAD 27 (N.M. EAST) N: 461637.09' E: 665131.62' |

¹⁷ OPERATOR
CERTIFICATION

I hereby certify that the information contained herein is true and complete to the best of my knowledge and belief, and that this organization either owns a working interest or unleased mineral interest in the land including the proposed bottom hole location or has a right to drill this well at this location pursuant to a contract with an owner of such a mineral or working interest, or to a voluntary pooling agreement or a compulsory pooling order heretofore entered by the division.

Roni Mathew 4/18/23

Signature Date

Roni Mathew

Printed Name

roni_mathew@oxy.com

E-mail Address

¹⁸ SURVEYOR
CERTIFICATION

I hereby certify that the well location shown on this plat was plotted from field notes of actual surveys made by me or under my supervision, and that the same is true and correct to the best of my belief.

November 09, 2022

Date of Survey
Signature and Seal of Professional Surveyor:



Certificate Number:

- = SURFACE HOLE LOCATION
- ◆ = KICK OFF/TAKE/DEFLECTION POINTS
- = BOTTOM HOLE LOCATION
- ▲ = SECTION CORNER LOCATED

NOTE:
• Distances referenced on plat to section lines are perpendicular.
• Basis of Bearings is a Transverse Mercator Projection with a Central Meridian of W103°53'00" (NAD 83)

| HSU COORDINATES | | | | |
|-----------------|------------------------------------|------------|------------------------------------|------------|
| | NAD 27 N.M. STATE PLANE, EAST ZONE | | NAD 83 N.M. STATE PLANE, EAST ZONE | |
| POINT | NORTHING | EASTING | NORTHING | EASTING |
| A | 461639.91' | 663735.43' | 461699.21' | 704918.98' |
| B | 461646.69' | 665054.68' | 461705.99' | 706238.24' |
| C | 461660.30' | 667691.03' | 461719.60' | 708874.60' |
| D | 456378.63' | 667722.95' | 456437.79' | 708906.67' |
| E | 456358.54' | 663765.06' | 456417.70' | 704948.77' |
| F | 458999.41' | 663750.67' | 459058.64' | 704934.31' |



SCALE
DRAWN BY: Z.T. 11-10-22
REV: 2 D.M.C. 03-29-23
(FIXED TYPO)

District I
1625 N. French Dr., Hobbs, NM 88240
Phone:(575) 393-6161 Fax:(575) 393-0720
District II
811 S. First St., Artesia, NM 88210
Phone:(575) 748-1283 Fax:(575) 748-9720
District III
1000 Rio Brazos Rd., Aztec, NM 87410
Phone:(505) 334-6178 Fax:(505) 334-6170
District IV
1220 S. St Francis Dr., Santa Fe, NM 87505
Phone:(505) 476-3470 Fax:(505) 476-3462

State of New Mexico
Energy, Minerals and Natural Resources
Oil Conservation Division
1220 S. St Francis Dr.
Santa Fe, NM 87505

CONDITIONS

Action 208926

CONDITIONS

| | |
|--|--|
| Operator: OXY USA INC P.O. Box 4294 Houston, TX 772104294 | OGRID: 16696 |
| | Action Number: 208926 |
| | Action Type: [C-103] NOI Change of Plans (C-103A) |

CONDITIONS

| | | |
|------------|-----------|----------------|
| Created By | Condition | Condition Date |
| jagarcia | None | 5/17/2023 |