

Office
 District I – (575) 393-6161
 1625 N. French Dr., Hobbs, NM 88240
 District II – (575) 748-1283
 811 S. First St., Artesia, NM 88210
 District III – (505) 334-6178
 1000 Rio Brazos Rd., Aztec, NM 87410
 District IV – (505) 476-3460
 1220 S. St. Francis Dr., Santa Fe, NM
 87505

State of New Mexico
 Energy, Minerals and Natural Resources

Form C-103
 Revised July 18, 2013

OIL CONSERVATION DIVISION
 1220 South St. Francis Dr.
 Santa Fe, NM 87505

| |
|--|
| WELL API NO. 33-025-51156; MULTIPLE |
| 5. Indicate Type of Lease STATE <input type="checkbox"/> FEE <input type="checkbox"/> |
| 6. State Oil & Gas Lease No. |
| 7. Lease Name or Unit Agreement Name Seinfeld Unit Fed Com MH and Mulva |
| 8. Well Number 221H; MULTIPLE |
| 9. OGRID Number 372043 |
| 10. Pool name or Wildcat WC-025 G-09 S243532M;WOLFBONE |

| | |
|---|--|
| SUNDRY NOTICES AND REPORTS ON WELLS (DO NOT USE THIS FORM FOR PROPOSALS TO DRILL OR TO DEEPEN OR PLUG BACK TO A DIFFERENT RESERVOIR. USE "APPLICATION FOR PERMIT" (FORM C-101) FOR SUCH PROPOSALS.) | |
| 1. Type of Well: Oil Well <input type="checkbox"/> Gas Well <input checked="" type="checkbox"/> Other | |
| 2. Name of Operator TAP ROCK OPERATING, LLC | |
| 3. Address of Operator 523 PARK POINT DR, SUITE 200, GOLDEN, CO 80401 | |
| 4. Well Location Unit Letter <u>D</u> ; <u>12</u> feet from the <u>NORTH</u> line and <u>810</u> feet from the <u>WEST</u> line Section <u>34</u> Township <u>24S</u> Range <u>35E</u> NMPM County <u>LEA</u> | |
| 11. Elevation (Show whether DR, RKB, RT, GR, etc.) 3278' | |

12. Check Appropriate Box to Indicate Nature of Notice, Report or Other Data

| NOTICE OF INTENTION TO: | SUBSEQUENT REPORT OF: |
|---|--|
| PERFORM REMEDIAL WORK <input type="checkbox"/> | REMEDIAL WORK <input type="checkbox"/> |
| TEMPORARILY ABANDON <input type="checkbox"/> | ALTERING CASING <input type="checkbox"/> |
| PULL OR ALTER CASING <input type="checkbox"/> | COMMENCE DRILLING OPNS. <input type="checkbox"/> |
| DOWNHOLE COMMINGLE <input type="checkbox"/> | P AND A <input type="checkbox"/> |
| CLOSED-LOOP SYSTEM <input type="checkbox"/> | CASING/CEMENT JOB <input type="checkbox"/> |
| OTHER: Additional well added to commingling order <input checked="" type="checkbox"/> | OTHER: <input type="checkbox"/> |

13. Describe proposed or completed operations. (Clearly state all pertinent details, and give pertinent dates, including estimated date of starting any proposed work). SEE RULE 19.15.7.14 NMAC. For Multiple Completions: Attach wellbore diagram of proposed completion or recompletion.

In accordance with OCD Order No. PLC-863, Tap Rock requests the following wells listed below to be added to the existing commingling order. No changes to pools or leases will result. Well allocation will be done following the same protocol approved under the existing commingling order: Oil and gas will flow to a wellbore test separator. Oil is measured via coriolis flow meter on each individual well and gas is measured by an orifice meter on each individual well and supporting EFM equipment according with API Chapter 21.1 before production is metered. Oil and Gas is calibrated periodically by a third party measurement company for accuracy. Commingled commingled production will be located at the Mulva C CTB, same location as previously approved. C-102s and facility location plats are attached.

See attached well list for additional wells being added to commingling. All additional wells listed will be associated with [98098] WC-025 G-09 S243532M; WOLFBONE.

I hereby certify that the information above is true and complete to the best of my knowledge and belief.

SIGNATURE  TITLE Regulatory Specialist DATE 5/17/23

Type or print name Jeff Trlica E-mail address: jtrlica@taprock.com PHONE: 720-772-5910

For State Use Only

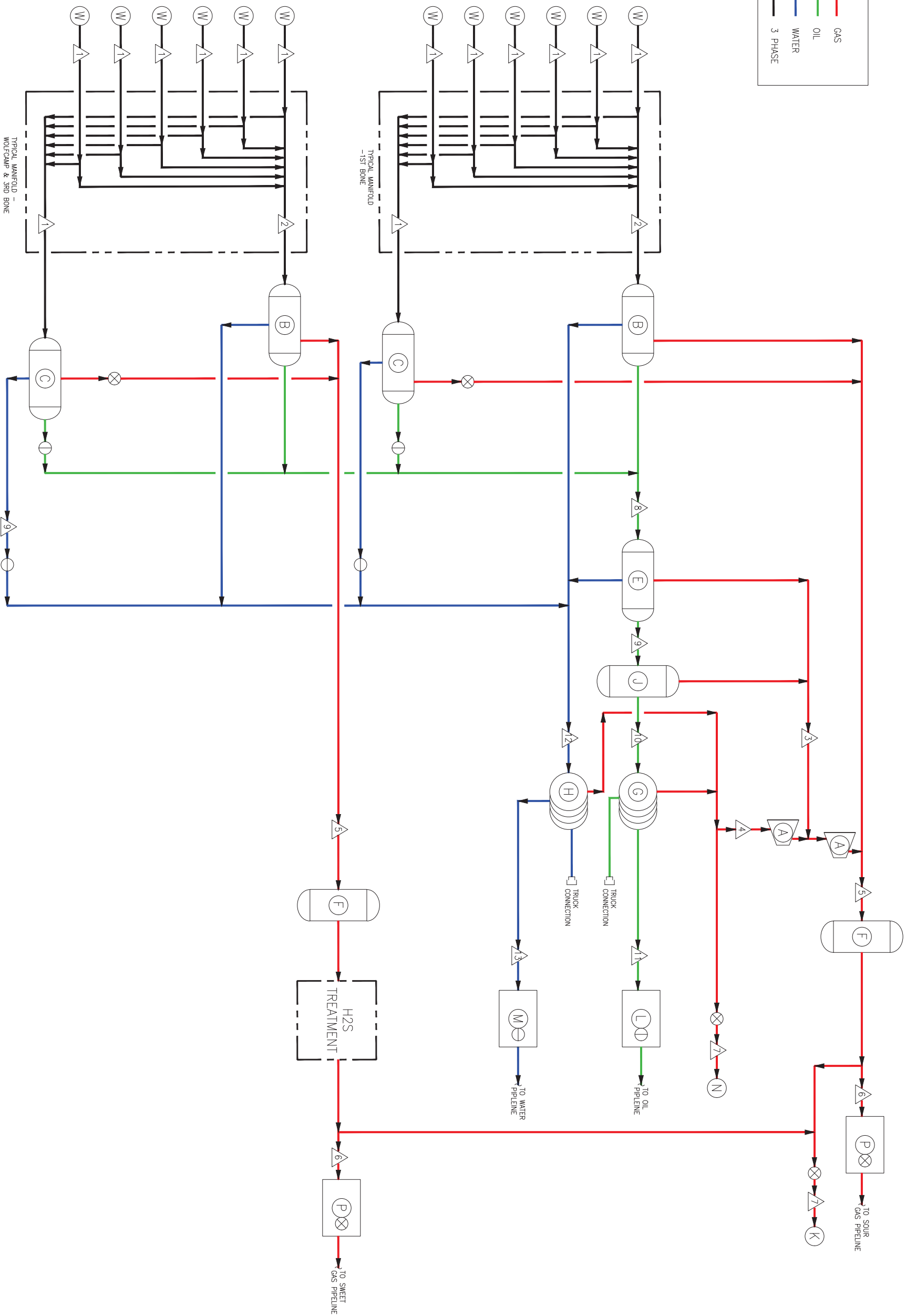
APPROVED BY: Dean R McIlure TITLE Petroleum Engineer DATE 05/18/2023

Conditions of Approval (if any):

Tap Rock Operating LLC

| API | Well Name | Well Number |
|--------------|-----------------------------|-------------|
| 30-025-51156 | SEINFELD MH FEDERAL UNIT | #221H |
| 30-025-51157 | SEINFELD MH FEDERAL UNIT | #222H |
| 30-025-51158 | SEINFELD MH FEDERAL UNIT | #223H |
| 30-025-51159 | SEINFELD MH FEDERAL UNIT | #224H |
| 30-025-50892 | SEINFELD MULVA FEDERAL UNIT | #221H |
| 30-025-50893 | SEINFELD MULVA FEDERAL UNIT | #222H |
| 30-025-50894 | SEINFELD MULVA FEDERAL UNIT | #223H |
| 30-025-50895 | SEINFELD MULVA FEDERAL UNIT | #224H |





LEGEND

EQUIPMENT

- (A) COMPRESSOR/BLOWER
- (B) BULK 3-PHASE SEPARATOR
- (C) TEST 3-PHASE SEPARATOR
- (E) BULK HEATER TREATER
- (F) SALES GAS SCRUBBER
- (G) OIL TANKS
- (H) WATER TANKS
- (J) BULK VAPOR RECOVERY TOWER
- (K) HP FLARE
- (L) LACT
- (M) WATER TRANSFER SKID
- (N) LP FLARE
- (P) SALES GAS METER SKID
- (W) WELL

SERVICE

- 1 SINGLE WELL FLOW
- 2 BULK WELL FLOW
- 3 MP GAS TO COMPRESSOR
- 4 LP GAS TO BLOWER
- 5 GAS TO SALES GAS SCRUBBER
- 6 GAS TO SALES GAS METER
- 7 GAS TO FLARE
- 8 OIL TO HEATER TREATER
- 9 OIL TO VRT
- 10 OIL TO OIL TANKS
- 11 OIL TO LACT
- 12 WATER TO WATER TANKS
- 13 WATER TO WATER TRANSFER SKID

FLOW METERS

- ⊗ GAS METER
- ⓪ OIL METER
- ⊖ WATER METER

| | | | | | | | | | |
|--------|--|--|--|--------------------|--|--|--|--|--|
| NOTES: | | | | | | | | | |
| | | | | REFERENCE DRAWINGS | | | | | |
| | | | | Δ | | | | | |
| | | | | Δ | | | | | |
| | | | | Δ | | | | | |
| | | | | Δ | | | | | |
| | | | | Δ | | | | | |
| | | | | Δ | | | | | |
| | | | | Δ | | | | | |
| | | | | Δ | | | | | |
| | | | | Δ | | | | | |
| | | | | Δ | | | | | |
| | | | | Δ | | | | | |
| | | | | Δ | | | | | |
| | | | | Δ | | | | | |
| | | | | Δ | | | | | |
| | | | | Δ | | | | | |
| | | | | Δ | | | | | |
| | | | | Δ | | | | | |
| | | | | Δ | | | | | |
| | | | | Δ | | | | | |
| | | | | Δ | | | | | |
| | | | | Δ | | | | | |
| | | | | Δ | | | | | |
| | | | | Δ | | | | | |
| | | | | Δ | | | | | |
| | | | | Δ | | | | | |
| | | | | Δ | | | | | |
| | | | | Δ | | | | | |
| | | | | Δ | | | | | |
| | | | | Δ | | | | | |
| | | | | Δ | | | | | |
| | | | | Δ | | | | | |
| | | | | Δ | | | | | |
| | | | | Δ | | | | | |
| | | | | Δ | | | | | |
| | | | | Δ | | | | | |
| | | | | Δ | | | | | |
| | | | | Δ | | | | | |
| | | | | Δ | | | | | |
| | | | | Δ | | | | | |
| | | | | Δ | | | | | |
| | | | | Δ | | | | | |
| | | | | Δ | | | | | |
| | | | | Δ | | | | | |
| | | | | Δ | | | | | |
| | | | | Δ | | | | | |
| | | | | Δ | | | | | |
| | | | | Δ | | | | | |
| | | | | Δ | | | | | |
| | | | | Δ | | | | | |
| | | | | Δ | | | | | |
| | | | | Δ | | | | | |
| | | | | Δ | | | | | |
| | | | | Δ | | | | | |
| | | | | Δ | | | | | |
| | | | | Δ | | | | | |
| | | | | Δ | | | | | |
| | | | | Δ | | | | | |
| | | | | Δ | | | | | |
| | | | | Δ | | | | | |
| | | | | Δ | | | | | |
| | | | | Δ | | | | | |
| | | | | Δ | | | | | |
| | | | | Δ | | | | | |
| | | | | Δ | | | | | |
| | | | | Δ | | | | | |
| | | | | Δ | | | | | |
| | | | | Δ | | | | | |
| | | | | Δ | | | | | |
| | | | | Δ | | | | | |
| | | | | Δ | | | | | |
| | | | | Δ | | | | | |
| | | | | Δ | | | | | |
| | | | | Δ | | | | | |
| | | | | Δ | | | | | |
| | | | | Δ | | | | | |
| | | | | Δ | | | | | |
| | | | | Δ | | | | | |
| | | | | Δ | | | | | |
| | | | | Δ | | | | | |
| | | | | Δ | | | | | |
| | | | | Δ | | | | | |
| | | | | Δ | | | | | |
| | | | | Δ | | | | | |
| | | | | Δ | | | | | |
| | | | | Δ | | | | | |
| | | | | Δ | | | | | |
| | | | | Δ | | | | | |
| | | | | Δ | | | | | |
| | | | | Δ | | | | | |
| | | | | Δ | | | | | |
| | | | | Δ | | | | | |
| | | | | Δ | | | | | |
| | | | | Δ | | | | | |
| | | | | Δ | | | | | |
| | | | | Δ | | | | | |
| | | | | Δ | | | | | |
| | | | | Δ | | | | | |
| | | | | Δ | | | | | |
| | | | | Δ | | | | | |
| | | | | Δ | | | | | |
| | | | | Δ | | | | | |
| | | | | Δ | | | | | |
| | | | | Δ | | | | | |
| | | | | Δ | | | | | |
| | | | | Δ | | | | | |
| | | | | Δ | | | | | |
| | | | | Δ | | | | | |
| | | | | Δ | | | | | |
| | | | | Δ | | | | | |
| | | | | Δ | | | | | |
| | | | | Δ | | | | | |
| | | | | Δ | | | | | |
| | | | | Δ | | | | | |
| | | | | Δ | | | | | |
| | | | | Δ | | | | | |
| | | | | Δ | | | | | |
| | | | | Δ | | | | | |
| | | | | Δ | | | | | |
| | | | | Δ | | | | | |
| | | | | Δ | | | | | |
| | | | | Δ | | | | | |
| | | | | Δ | | | | | |

District I
1625 N. French Dr., Hobbs, NM 88240
Phone: (575) 393-6161 Fax: (575) 393-0720
District II
811 S. First St., Artesia, NM 88210
Phone: (575) 748-1283 Fax: (575) 748-9720
District III
1000 Rio Brazos Road, Aztec, NM 87410
Phone: (505) 334-6178 Fax: (505) 334-6170
District IV
1220 S. St. Francis Dr., Santa Fe, NM 87505
Phone: (505) 476-3460 Fax: (505) 476-3462

State of New Mexico
Energy, Minerals & Natural Resources
Department
OIL CONSERVATION DIVISION
1220 South St. Francis Dr.
Santa Fe, NM 87505

FORM C-102

Revised August 1, 2011

Submit one copy to appropriate

District Office

☐ AMENDED REPORT

WELL LOCATION AND ACREAGE DEDICATION PLAT

| | | |
|---|---|---|
| ¹ API Number 30-025-51156 | ² Pool Code 98098 | ³ Pool Name WC-025 G-09 S243532M:WOLFBONE |
| ⁴ Property Code 333054 | ⁵ Property Name SEINFELD FEDERAL UNIT MAN HANDS | ⁶ Well Number 221H |
| ⁷ OGRID No. #372043 | ⁸ Operator Name TAP ROCK OPERATING, LLC. | ⁹ Elevation 3278' |

¹⁰Surface Location

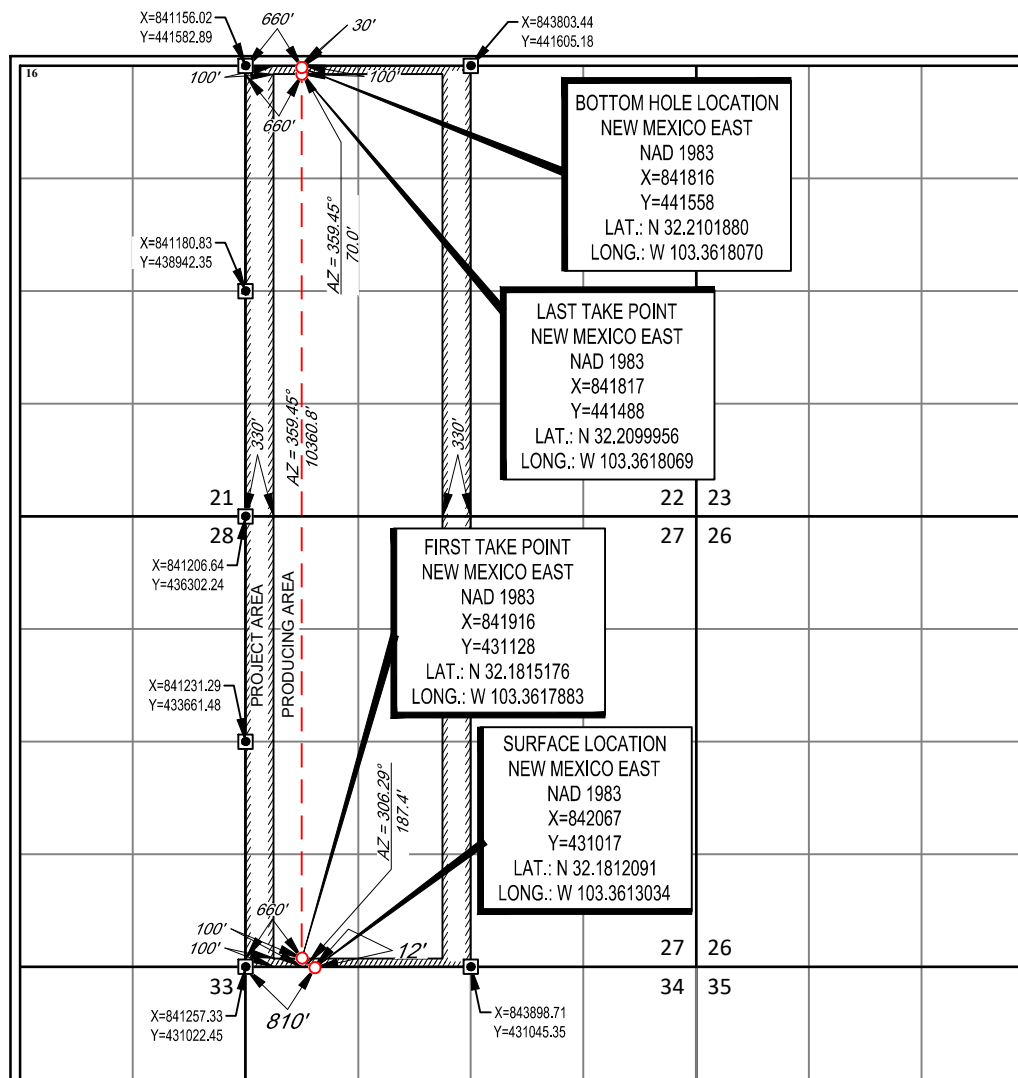
| UL or lot no. | Section | Township | Range | Lot Idn | Feet from the | North/South line | Feet from the | East/West line | County |
|---------------|---------|----------|-------|---------|---------------|------------------|---------------|----------------|--------|
| D | 34 | 24-S | 35-E | - | 12' | NORTH | 810' | WEST | LEA |

¹¹Bottom Hole Location If Different From Surface

| UL or lot no. | Section | Township | Range | Lot Idn | Feet from the | North/South line | Feet from the | East/West line | County |
|---------------|---------|----------|-------|---------|---------------|------------------|---------------|----------------|--------|
| D | 22 | 24-S | 35-E | - | 30' | NORTH | 660' | WEST | LEA |

| | | | |
|--------------------------------------|-------------------------------|----------------------------------|-------------------------|
| ¹² Dedicated Acres 640 | ¹³ Joint or Infill | ¹⁴ Consolidation Code | ¹⁵ Order No. |
|--------------------------------------|-------------------------------|----------------------------------|-------------------------|

No allowable will be assigned to this completion until all interests have been consolidated or a non-standard unit has been approved by the division.

¹⁷OPERATOR CERTIFICATION

I hereby certify that the information contained herein is true and complete to the best of my knowledge and belief, and that this organization either owns a working interest or unleased mineral interest in the land including the proposed bottom hole location or has a right to drill this well at this location pursuant to a contract with an owner of such a mineral or working interest, or to a voluntary pooling agreement or a compulsory pooling order heretofore entered by the division.

[Signature]
Signature

1/12/2023

Date

Jeff Trlica

Printed Name

jtrlica@taprk.com

E-mail Address

¹⁸SURVEYOR CERTIFICATION

I hereby certify that the well location shown on this plat was plotted from field notes of actual surveys made by me or under my supervision, and that the same is true to the best of my belief.

11/19/2020

Date of Survey
Signature and Seal of Professional Surveyor

[Signature]
Certificate Number
24508

District I
1625 N. French Dr., Hobbs, NM 88240
Phone: (575) 393-6161 Fax: (575) 393-0720

District II
811 S. First St., Artesia, NM 88210
Phone: (575) 748-1283 Fax: (575) 748-9720

District III
1000 Rio Brazos Road, Aztec, NM 87410
Phone: (505) 334-6178 Fax: (505) 334-6170

District IV
1220 S. St. Francis Dr., Santa Fe, NM 87505
Phone: (505) 476-3460 Fax: (505) 476-3462

State of New Mexico
Energy, Minerals & Natural Resources
Department
OIL CONSERVATION DIVISION
1220 South St. Francis Dr.
Santa Fe, NM 87505

FORM C-102

Revised August 1, 2011

Submit one copy to appropriate

District Office

☐ **AMENDED REPORT**

WELL LOCATION AND ACREAGE DEDICATION PLAT

| | | | | |
|---|---|---------------------------------|---|----------------------------------|
| ¹ API Number 30-025-51157 | | ² Pool Code 98098 | ³ Pool Name WC-025 G-09 S243532M:WOLFBONE | |
| ⁴ Property Code 333054 | ⁵ Property Name SEINFELD FEDERAL UNIT MAN HANDS | | | ⁶ Well Number 222H |
| ⁷ OGRID No. #372043 | ⁸ Operator Name TAP ROCK OPERATING, LLC. | | | ⁹ Elevation 3278' |

¹⁰Surface Location

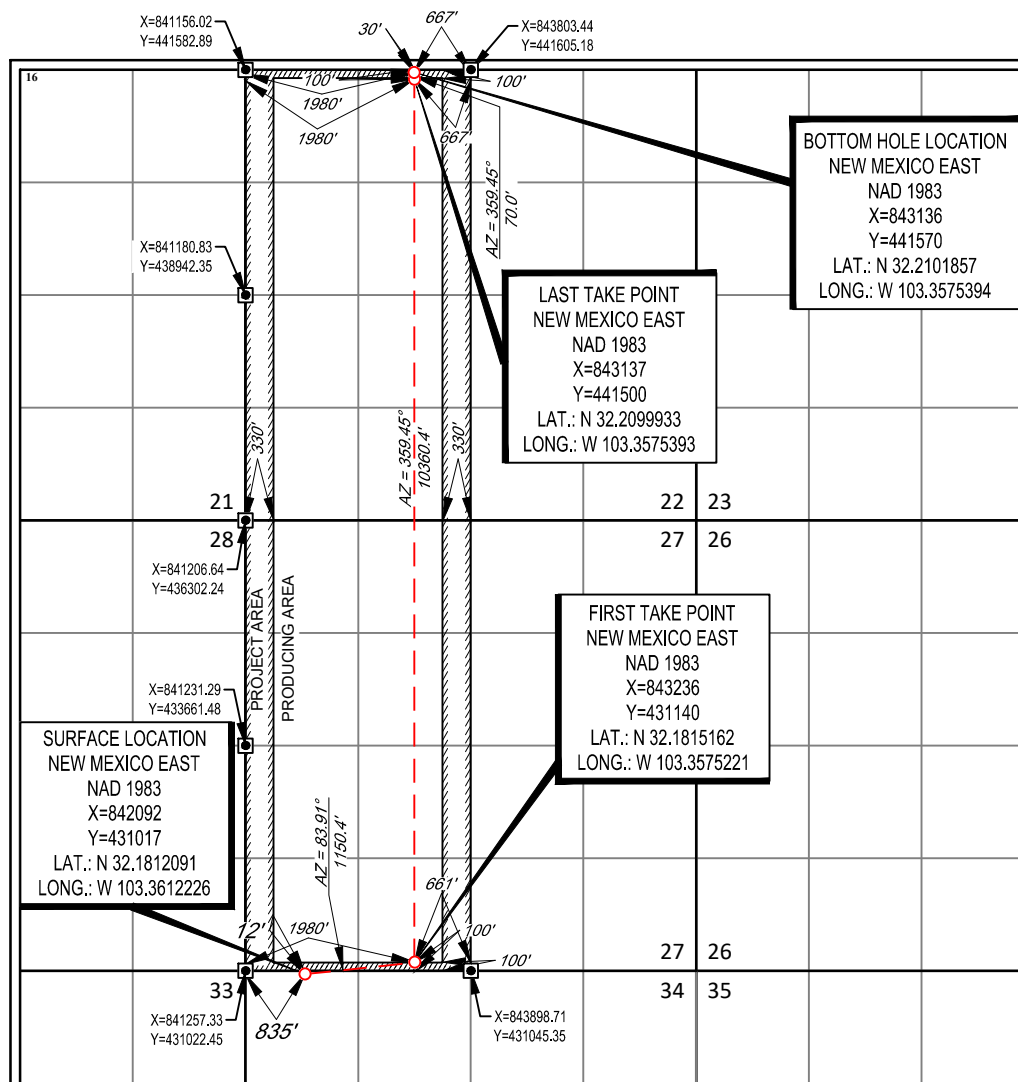
| | | | | | | | | | |
|---------------|---------|----------|-------|---------|---------------|------------------|---------------|----------------|--------|
| UL or lot no. | Section | Township | Range | Lot Idn | Feet from the | North/South line | Feet from the | East/West line | County |
| D | 34 | 24-S | 35-E | — | 12' | NORTH | 835' | WEST | LEA |

¹¹Bottom Hole Location If Different From Surface

| | | | | | | | | | |
|---------------|---------|----------|-------|---------|---------------|------------------|---------------|----------------|--------|
| UL or lot no. | Section | Township | Range | Lot Idn | Feet from the | North/South line | Feet from the | East/West line | County |
| C | 22 | 24-S | 35-E | — | 30' | NORTH | 1980' | WEST | LEA |

| | | | |
|--------------------------------------|-------------------------------|----------------------------------|-------------------------|
| ¹² Dedicated Acres 640 | ¹³ Joint or Infill | ¹⁴ Consolidation Code | ¹⁵ Order No. |
|--------------------------------------|-------------------------------|----------------------------------|-------------------------|

No allowable will be assigned to this completion until all interests have been consolidated or a non-standard unit has been approved by the division.



¹⁷OPERATOR CERTIFICATION

I hereby certify that the information contained herein is true and complete to the best of my knowledge and belief, and that this organization either owns a working interest or unleased mineral interest in the land including the proposed bottom hole location or has a right to drill this well at this location pursuant to a contract with an owner of such a mineral or working interest, or to a voluntary pooling agreement or a compulsory pooling order heretofore entered by the division.



1/12/2023

Signature _____

Jeff Trlica

Printed Name _____

itrlica@taprk.com

E-mail Address

18 SURVEYOR CERTIFICATION

I hereby certify that the well location shown on this plat was plotted from field notes of actual surveys made by me or under my supervision, and that the same is true to the best of my belief.

11/19/2020

Date of Survey _____
Signature and Seal of Professional Surveyor _____

Signature and Seal of Professional Surveyor

Certificate Number

District I
1625 N. French Dr., Hobbs, NM 88240
Phone: (575) 393-6161 Fax: (575) 393-0720

District II
811 S. First St., Artesia, NM 88210
Phone: (575) 748-1283 Fax: (575) 748-9720

District III
1000 Rio Brazos Road, Aztec, NM 87410
Phone: (505) 334-6178 Fax: (505) 334-6170

District IV
1220 S. St. Francis Dr., Santa Fe, NM 87505
Phone: (505) 476-3460 Fax: (505) 476-3462

State of New Mexico
Energy, Minerals & Natural Resources
Department
OIL CONSERVATION DIVISION
1220 South St. Francis Dr.
Santa Fe, NM 87505

FORM C-102

Revised August 1, 2011

Submit one copy to appropriate

District Office

☐ **AMENDED REPORT**

WELL LOCATION AND ACREAGE DEDICATION PLAT

| | | |
|---|---|---|
| ¹ API Number 30-025-51158 | ² Pool Code 98098 | ³ Pool Name WC-025 G-09 S243532M:WOLFBONE |
| ⁴ Property Code 333054 | ⁵ Property Name SEINFELD FEDERAL UNIT MAN HANDS | |
| ⁷ OGRID No. #372043 | ⁸ Operator Name TAP ROCK OPERATING, LLC. | ⁶ Well Number 223H ⁹ Elevation 3276' |

¹⁰Surface Location

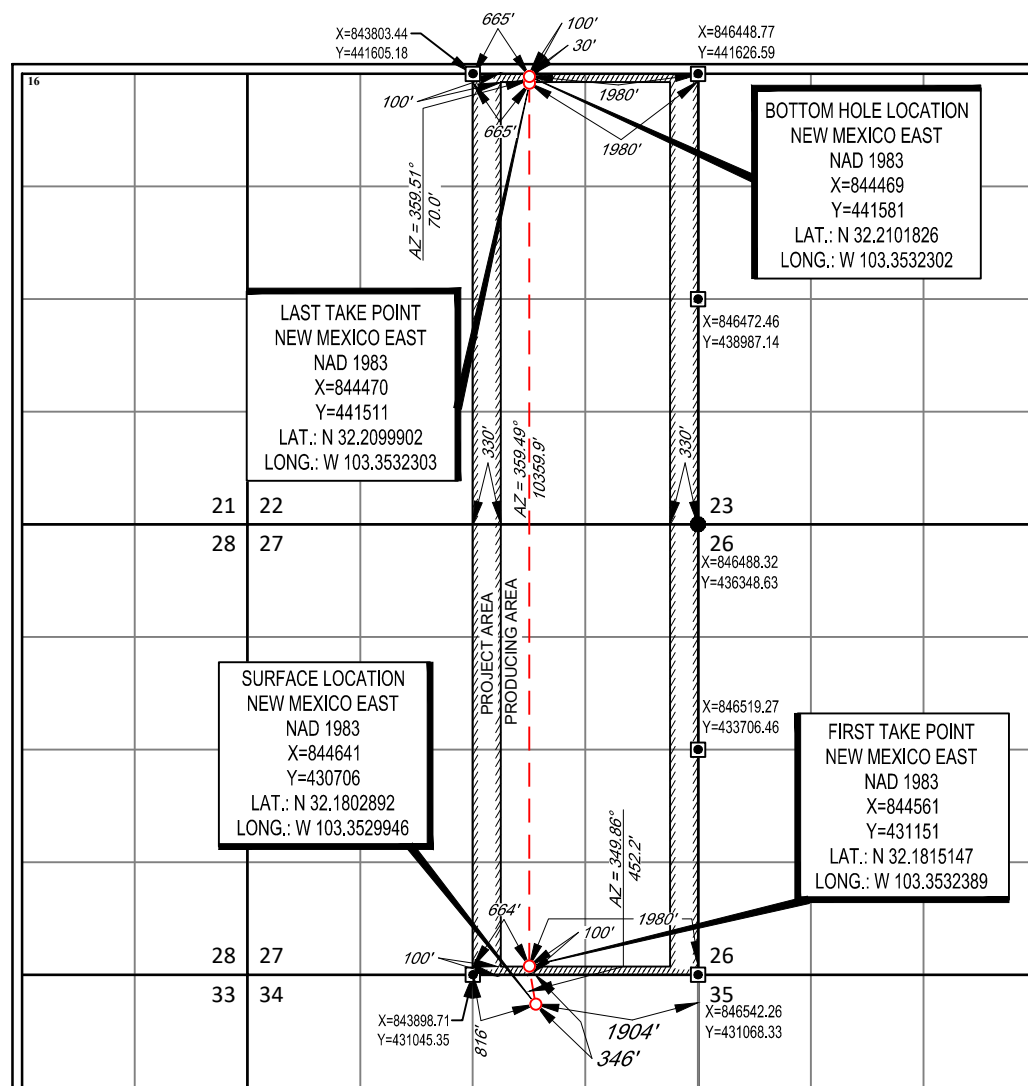
| | | | | | | | | | |
|---------------|---------|----------|-------|---------|---------------|------------------|---------------|----------------|--------|
| UL or lot no. | Section | Township | Range | Lot Idn | Feet from the | North/South line | Feet from the | East/West line | County |
| B | 34 | 24-S | 35-E | — | 346' | NORTH | 1904' | EAST | LEA |

¹¹Bottom Hole Location If Different From Surface

| UL or lot no. | Section | Township | Range | Lot Idn | Feet from the | North/South line | Feet from the | East/West line | County |
|---------------|-----------|-------------|-------------|----------|---------------|------------------|---------------|----------------|------------|
| B | 22 | 24-S | 35-E | - | 30' | NORTH | 1980' | EAST | LEA |

| | | | |
|--------------------------------------|-------------------------------|----------------------------------|-------------------------|
| ¹² Dedicated Acres 640 | ¹³ Joint or Infill | ¹⁴ Consolidation Code | ¹⁵ Order No. |
|--------------------------------------|-------------------------------|----------------------------------|-------------------------|

No allowable will be assigned to this completion until all interests have been consolidated or a non-standard unit has been approved by the division.



¹⁷OPERATOR CERTIFICATION

I hereby certify that the information contained herein is true and complete to the best of my knowledge and belief, and that this organization either owns a working interest or unleased mineral interest in the land including the proposed bottom hole location or has a right to drill this well at this location pursuant to a contract with an owner of such a mineral or working interest, or to a voluntary pooling agreement or a compulsory pooling order heretofore entered by the division.

1/12/2023

Signature _____

Jeff Trlica

Printed Name _____

itrlica@taprk.com

E-mail Address

¹⁸SURVEYOR CERTIFICATION

I hereby certify that the well location shown on this plat was plotted from field notes of actual surveys made by me or under my supervision, and that the same is true to the best of my belief.

11/19/2020

Date of Survey _____
Signature and Seal of Professional Surveyor _____

Certificate Number

District I
1625 N. French Dr., Hobbs, NM 88240
Phone: (575) 393-6161 Fax: (575) 393-0720
District II
811 S. First St., Artesia, NM 88210
Phone: (575) 748-1283 Fax: (575) 748-9720
District III
1000 Rio Brazos Road, Aztec, NM 87410
Phone: (505) 334-6178 Fax: (505) 334-6170
District IV
1220 S. St. Francis Dr., Santa Fe, NM 87505
Phone: (505) 476-3460 Fax: (505) 476-3462

State of New Mexico
Energy, Minerals & Natural Resources
Department
OIL CONSERVATION DIVISION
1220 South St. Francis Dr.
Santa Fe, NM 87505

FORM C-102

Revised August 1, 2011

Submit one copy to appropriate

District Office

☐ AMENDED REPORT

WELL LOCATION AND ACREAGE DEDICATION PLAT

| | | |
|---|---|---|
| ¹ API Number 30-025-51159 | ² Pool Code 98098 | ³ Pool Name WC-025 G-09 S243532M:WOLFBONE |
| ⁴ Property Code 333054 | ⁵ Property Name SEINFELD FEDERAL UNIT MAN HANDS | ⁶ Well Number 224H |
| ⁷ OGRID No. #372043 | ⁸ Operator Name TAP ROCK OPERATING, LLC. | ⁹ Elevation 3276' |

¹⁰Surface Location

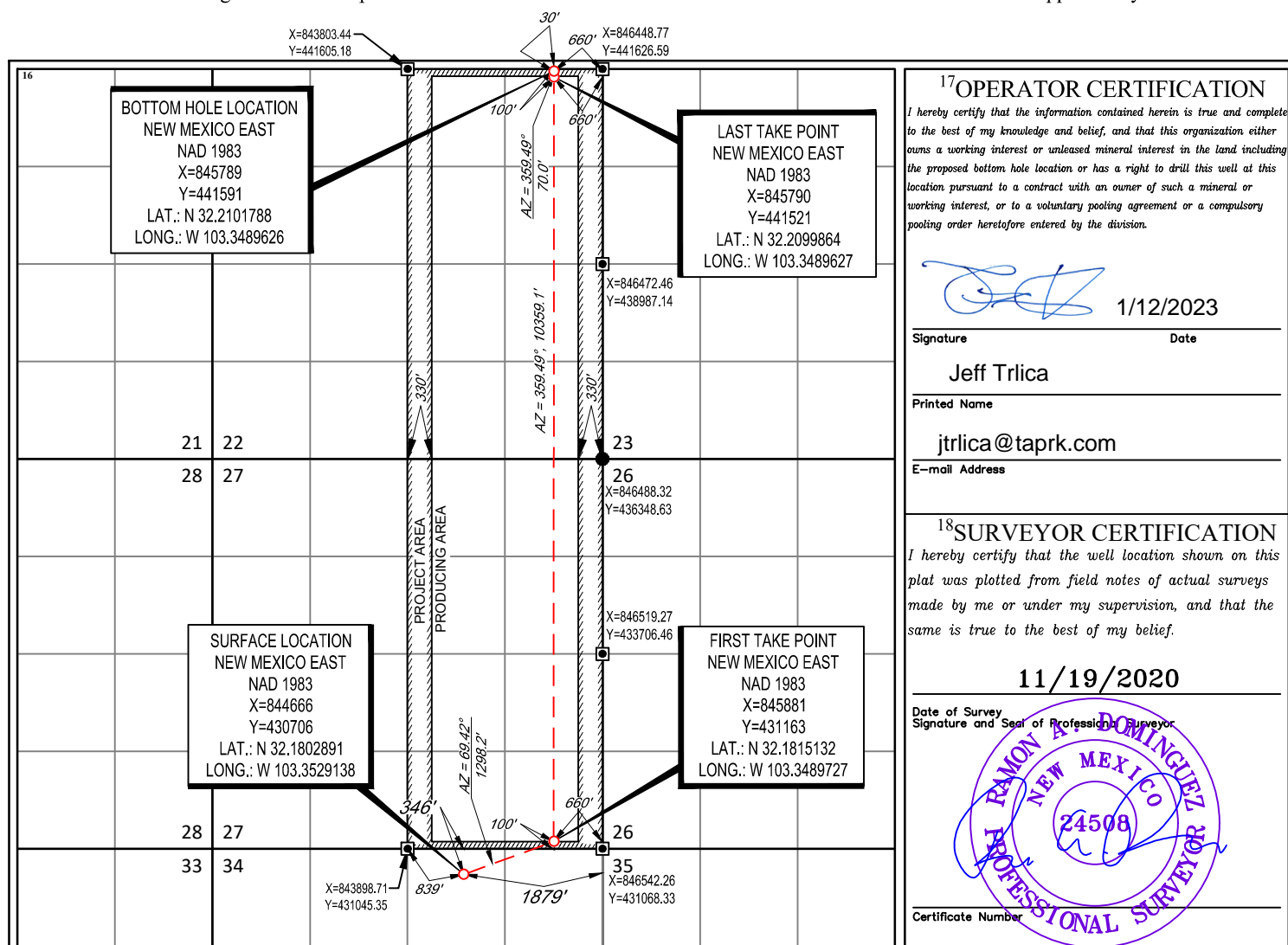
| UL or lot no. | Section | Township | Range | Lot Idn | Feet from the | North/South line | Feet from the | East/West line | County |
|---------------|---------|----------|-------|---------|---------------|------------------|---------------|----------------|--------|
| B | 34 | 24-S | 35-E | - | 346' | NORTH | 1879' | EAST | LEA |

¹¹Bottom Hole Location If Different From Surface

| UL or lot no. | Section | Township | Range | Lot Idn | Feet from the | North/South line | Feet from the | East/West line | County |
|---------------|---------|----------|-------|---------|---------------|------------------|---------------|----------------|--------|
| B | 22 | 24-S | 35-E | - | 30' | NORTH | 660' | EAST | LEA |

| | | | |
|--------------------------------------|-------------------------------|----------------------------------|-------------------------|
| ¹² Dedicated Acres 640 | ¹³ Joint or Infill | ¹⁴ Consolidation Code | ¹⁵ Order No. |
|--------------------------------------|-------------------------------|----------------------------------|-------------------------|

No allowable will be assigned to this completion until all interests have been consolidated or a non-standard unit has been approved by the division.

¹⁷OPERATOR CERTIFICATION

I hereby certify that the information contained herein is true and complete to the best of my knowledge and belief, and that this organization either owns a working interest or unleased mineral interest in the land including the proposed bottom hole location or has a right to drill this well at this location pursuant to a contract with an owner of such a mineral or working interest, or to a voluntary pooling agreement or a compulsory pooling order heretofore entered by the division.

[Signature]

1/12/2023

Signature

Date

Jeff Trlica

Printed Name

jtrlica@taprk.com

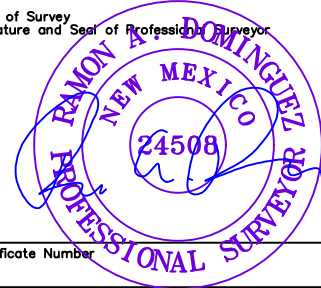
E-mail Address

¹⁸SURVEYOR CERTIFICATION

I hereby certify that the well location shown on this plat was plotted from field notes of actual surveys made by me or under my supervision, and that the same is true to the best of my belief.

11/19/2020

Date of Survey
Signature and Seal of Professional Surveyor



Certificate Number

District I
1625 N. French Dr., Hobbs, NM 88240
Phone: (575) 393-6161 Fax: (575) 393-0720

District II
811 S. First St., Artesia, NM 88210
Phone: (575) 748-1283 Fax: (575) 748-9720

District III
1000 Rio Brazos Road, Aztec, NM 87410
Phone: (505) 334-6178 Fax: (505) 334-6170

District IV
1220 S. St. Francis Dr., Santa Fe, NM 87505
Phone: (505) 476-3460 Fax: (505) 476-3462

State of New Mexico
Energy, Minerals & Natural Resources
Department
OIL CONSERVATION DIVISION
1220 South St. Francis Dr.
Santa Fe, NM 87505

FORM C-102

Revised August 1, 2011

Submit one copy to appropriate

District Office

☐ **AMENDED REPORT**

WELL LOCATION AND ACREAGE DEDICATION PLAT

| | | |
|---|---|---|
| ¹ API Number 30-025-50892 | ² Pool Code 98098 | ³ Pool Name WC-025 G-09 S243532M:WOLFBONE |
| ⁴ Property Code 332860 | ⁵ Property Name SEINFELD FEDERAL UNIT MULVA | |
| ⁷ OGRID No. 372043 | ⁸ Operator Name TAP ROCK OPERATING, LLC. | ⁶ Well Number 221H ⁹ Elevation 3278' |

¹⁰Surface Location

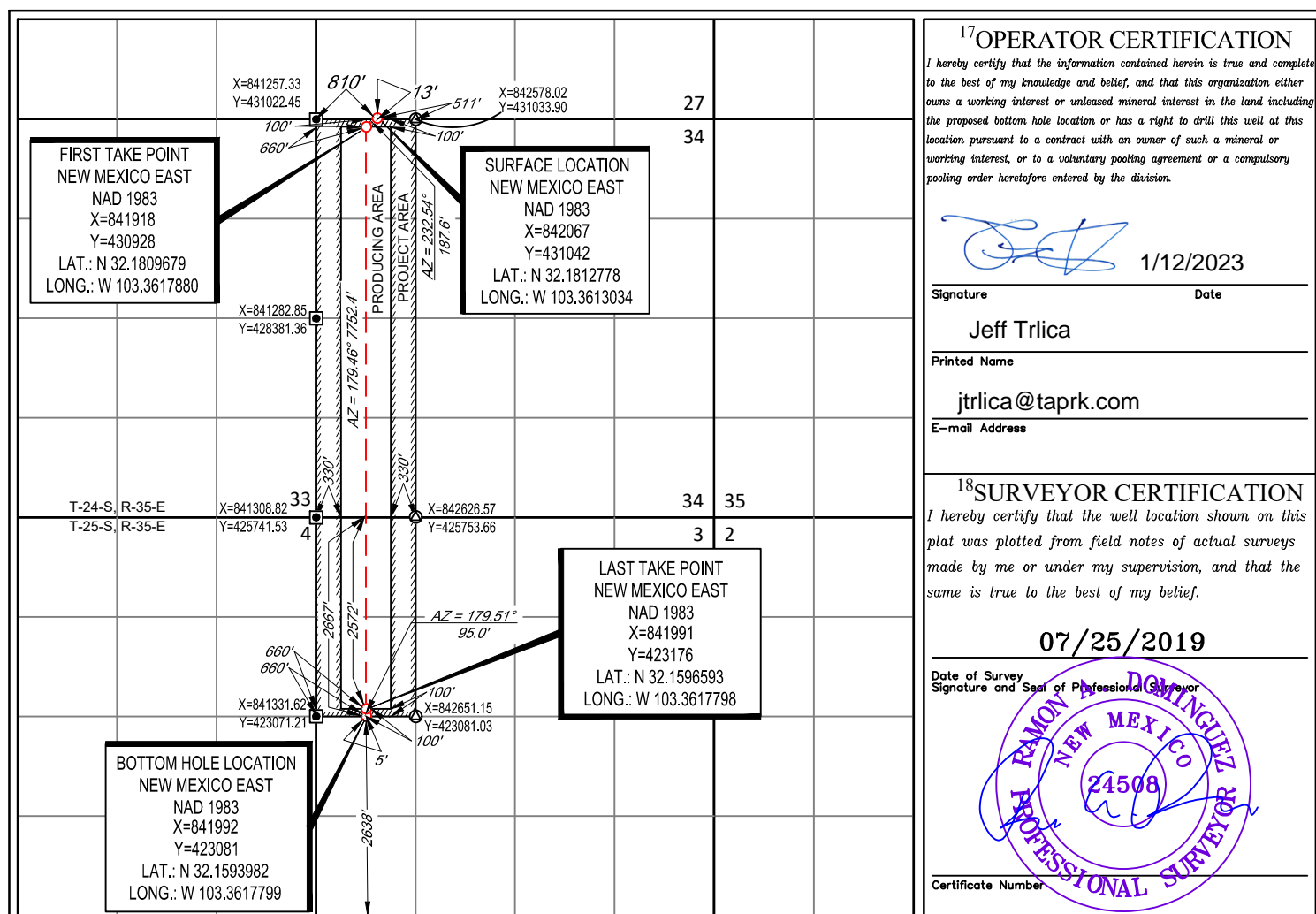
| | | | | | | | | | |
|---------------|-----------|-------------|-------------|----------|---------------|------------------|---------------|----------------|------------|
| UL or lot no. | Section | Township | Range | Lot Idn | Feet from the | North/South line | Feet from the | East/West line | County |
| M | 27 | 24-S | 35-E | - | 13' | SOUTH | 810' | WEST | LEA |

¹¹Bottom Hole Location If Different From Surface

| | | | | | | | | | |
|---------------|---------|----------|-------|---------|---------------|------------------|---------------|----------------|--------|
| UL or lot no. | Section | Township | Range | Lot Idn | Feet from the | North/South line | Feet from the | East/West line | County |
| E | 3 | 25-S | 35-E | - | 2638' | SOUTH | 660' | WEST | LEA |

| | | | |
|---|-------------------------------|----------------------------------|-------------------------|
| ¹² Dedicated Acres 241 | ¹³ Joint or Infill | ¹⁴ Consolidation Code | ¹⁵ Order No. |
|---|-------------------------------|----------------------------------|-------------------------|

No allowable will be assigned to this completion until all interests have been consolidated or a non-standard unit has been approved by the division.



District I
1625 N. French Dr., Hobbs, NM 88240
Phone: (575) 393-6161 Fax: (575) 393-0720
District II
811 S. First St., Artesia, NM 88210
Phone: (575) 748-1283 Fax: (575) 748-9720
District III
1000 Rio Brazos Road, Aztec, NM 87410
Phone: (505) 334-6178 Fax: (505) 334-6170
District IV
1220 S. St. Francis Dr., Santa Fe, NM 87505
Phone: (505) 476-3460 Fax: (505) 476-3462

State of New Mexico
Energy, Minerals & Natural Resources
Department
OIL CONSERVATION DIVISION
1220 South St. Francis Dr.
Santa Fe, NM 87505

FORM C-102

Revised August 1, 2011

Submit one copy to appropriate

District Office

☐ AMENDED REPORT

WELL LOCATION AND ACREAGE DEDICATION PLAT

| | | |
|---|---|---|
| ¹ API Number 30-025-50893 | ² Pool Code 98098 | ³ Pool Name WC-025 G-09 S243532M:WOLFBONE |
| ⁴ Property Code 332860 | ⁵ Property Name SEINFELD FEDERAL UNIT MULVA | ⁶ Well Number 222H |
| ⁷ OGRID No. #372043 | ⁸ Operator Name TAP ROCK OPERATING, LLC. | ⁹ Elevation 3278' |

¹⁰Surface Location

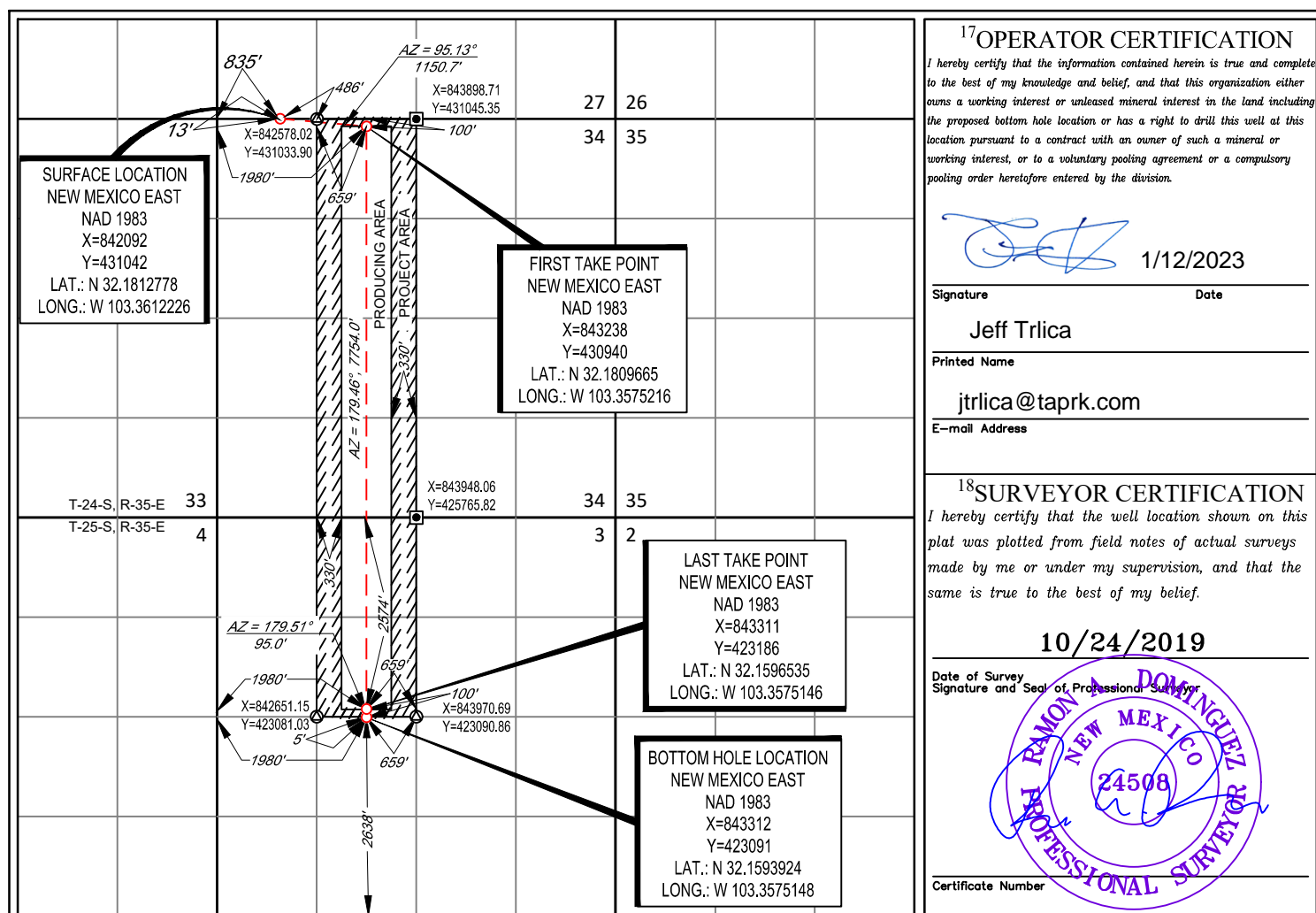
| UL or lot no. | Section | Township | Range | Lot Idn | Feet from the | North/South line | Feet from the | East/West line | County |
|---------------|---------|----------|-------|---------|---------------|------------------|---------------|----------------|--------|
| M | 27 | 24-S | 35-E | - | 13' | SOUTH | 835' | WEST | LEA |

¹¹Bottom Hole Location If Different From Surface

| UL or lot no. | Section | Township | Range | Lot Idn | Feet from the | North/South line | Feet from the | East/West line | County |
|---------------|---------|----------|-------|---------|---------------|------------------|---------------|----------------|--------|
| F | 3 | 25-S | 35-E | - | 2638' | SOUTH | 1980' | WEST | LEA |

| | | | |
|---------------------------------------|-------------------------------|----------------------------------|-------------------------|
| ¹² Dedicated Acres 241' | ¹³ Joint or Infill | ¹⁴ Consolidation Code | ¹⁵ Order No. |
|---------------------------------------|-------------------------------|----------------------------------|-------------------------|

No allowable will be assigned to this completion until all interests have been consolidated or a non-standard unit has been approved by the division.



District I
1625 N. French Dr., Hobbs, NM 88240
Phone: (575) 393-6161 Fax: (575) 393-0720
District II
811 S. First St., Artesia, NM 88210
Phone: (575) 748-1283 Fax: (575) 748-9720
District III
1000 Rio Brazos Road, Aztec, NM 87410
Phone: (505) 334-6178 Fax: (505) 334-6170
District IV
1220 S. St. Francis Dr., Santa Fe, NM 87505
Phone: (505) 476-3460 Fax: (505) 476-3462

State of New Mexico
Energy, Minerals & Natural Resources
Department
OIL CONSERVATION DIVISION
1220 South St. Francis Dr.
Santa Fe, NM 87505

FORM C-102

Revised August 1, 2011

Submit one copy to appropriate

District Office

☐ AMENDED REPORT

WELL LOCATION AND ACREAGE DEDICATION PLAT

| | | |
|---|---|---|
| ¹ API Number 30-025-50894 | ² Pool Code 98098 | ³ Pool Name WC-025 G-09 S243532M:WOLFBONE |
| ⁴ Property Code 332860 | ⁵ Property Name SEINFELD FEDERAL UNIT MULVA | ⁶ Well Number 223H |
| ⁷ OGRID No. #372043 | ⁸ Operator Name TAP ROCK OPERATING, LLC. | ⁹ Elevation 3277' |

¹⁰Surface Location

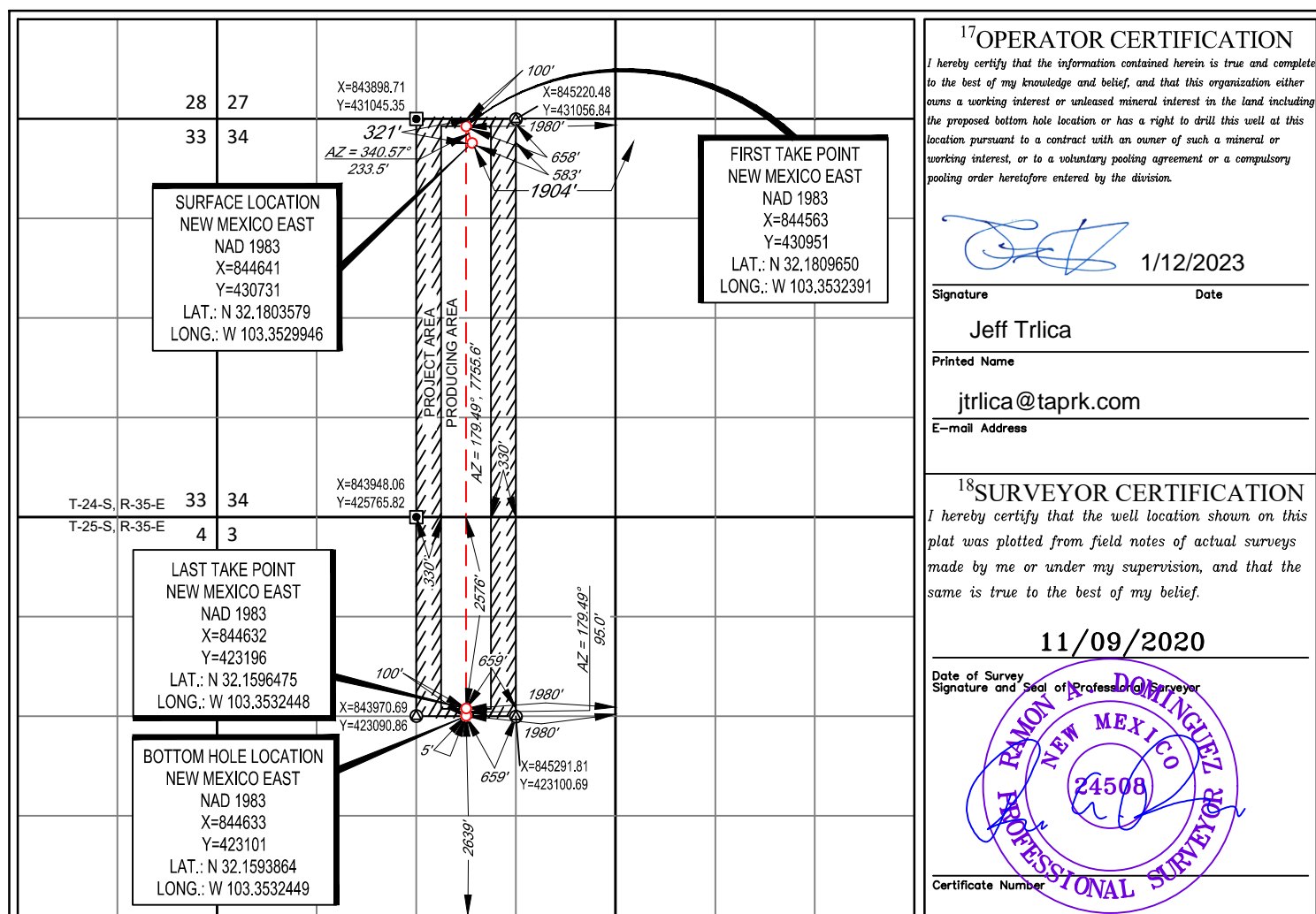
| UL or lot no. | Section | Township | Range | Lot Idn | Feet from the | North/South line | Feet from the | East/West line | County |
|---------------|---------|----------|-------|---------|---------------|------------------|---------------|----------------|--------|
| B | 34 | 24-S | 35-E | - | 321' | NORTH | 1904' | EAST | LEA |

¹¹Bottom Hole Location If Different From Surface

| UL or lot no. | Section | Township | Range | Lot Idn | Feet from the | North/South line | Feet from the | East/West line | County |
|---------------|---------|----------|-------|---------|---------------|------------------|---------------|----------------|--------|
| G | 3 | 25-S | 35-E | - | 2639' | SOUTH | 1980' | EAST | LEA |

| | | | |
|--------------------------------------|-------------------------------|----------------------------------|-------------------------|
| ¹² Dedicated Acres 241 | ¹³ Joint or Infill | ¹⁴ Consolidation Code | ¹⁵ Order No. |
|--------------------------------------|-------------------------------|----------------------------------|-------------------------|

No allowable will be assigned to this completion until all interests have been consolidated or a non-standard unit has been approved by the division.



District I
1625 N. French Dr., Hobbs, NM 88240
Phone: (575) 393-6161 Fax: (575) 393-0720
District II
811 S. First St., Artesia, NM 88210
Phone: (575) 748-1283 Fax: (575) 748-9720
District III
1000 Rio Brazos Road, Aztec, NM 87410
Phone: (505) 334-6178 Fax: (505) 334-6170
District IV
1220 S. St. Francis Dr., Santa Fe, NM 87505
Phone: (505) 476-3460 Fax: (505) 476-3462

State of New Mexico
Energy, Minerals & Natural Resources
Department
OIL CONSERVATION DIVISION
1220 South St. Francis Dr.
Santa Fe, NM 87505

FORM C-102

Revised August 1, 2011

Submit one copy to appropriate

District Office

☐ AMENDED REPORT

WELL LOCATION AND ACREAGE DEDICATION PLAT

| | | |
|---|---|---|
| ¹ API Number 30-025-50895 | ² Pool Code 98098 | ³ Pool Name WC-025 G-09 S243532M:WOLFBONE |
| ⁴ Property Code 332860 | ⁵ Property Name SEINFELD FEDERAL UNIT MULVA | ⁶ Well Number 224H |
| ⁷ OGRID No. #372043 | ⁸ Operator Name TAP ROCK OPERATING, LLC. | ⁹ Elevation 3277' |

¹⁰Surface Location

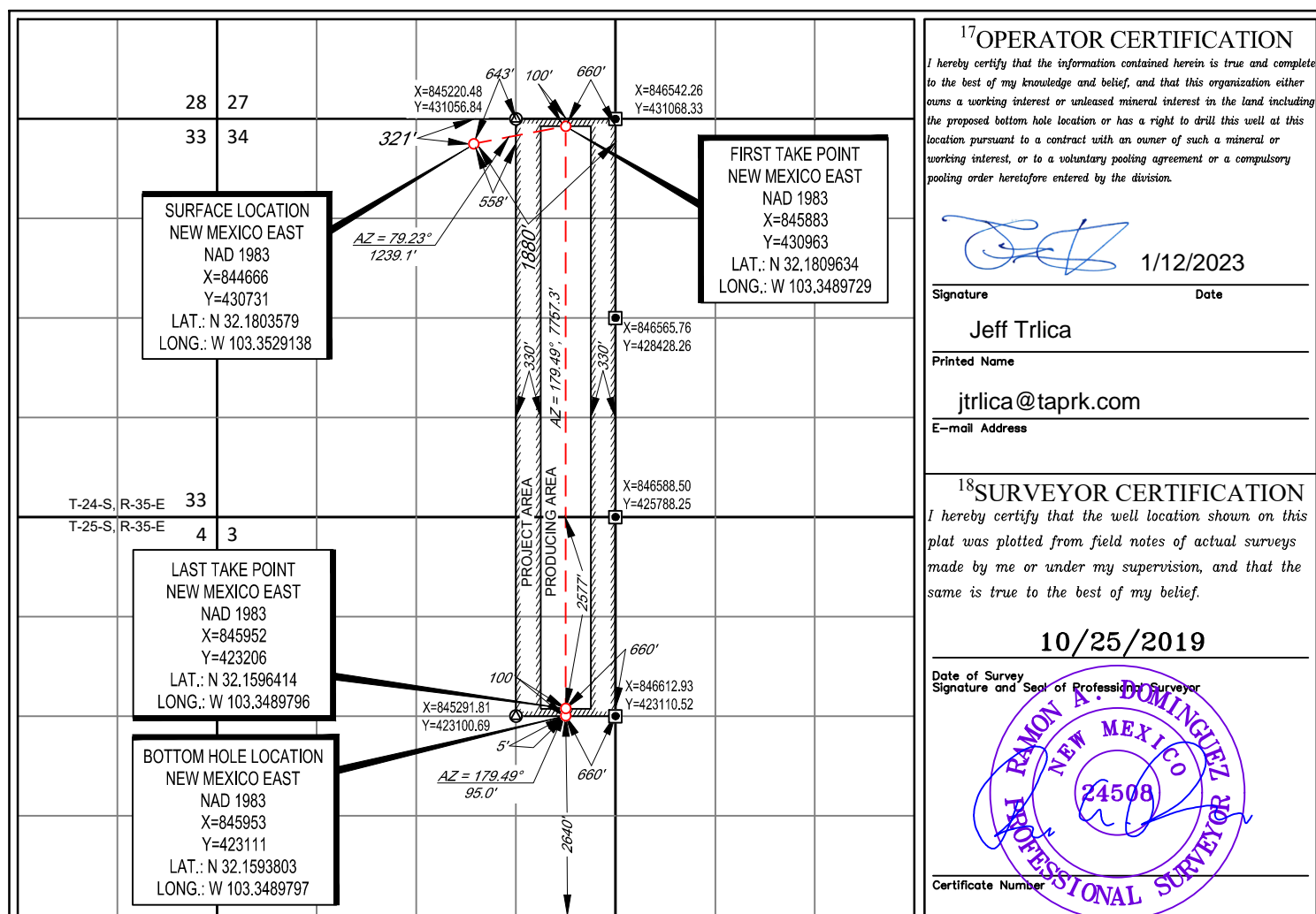
| UL or lot no. | Section | Township | Range | Lot Idn | Feet from the | North/South line | Feet from the | East/West line | County |
|---------------|---------|----------|-------|---------|---------------|------------------|---------------|----------------|--------|
| B | 34 | 24-S | 35-E | - | 321' | NORTH | 1880' | EAST | LEA |

¹¹Bottom Hole Location If Different From Surface

| UL or lot no. | Section | Township | Range | Lot Idn | Feet from the | North/South line | Feet from the | East/West line | County |
|---------------|---------|----------|-------|---------|---------------|------------------|---------------|----------------|--------|
| H | 3 | 25-S | 35-E | - | 2640' | SOUTH | 660' | EAST | LEA |

| | | | |
|--------------------------------------|-------------------------------|----------------------------------|-------------------------|
| ¹² Dedicated Acres 241 | ¹³ Joint or Infill | ¹⁴ Consolidation Code | ¹⁵ Order No. |
|--------------------------------------|-------------------------------|----------------------------------|-------------------------|

No allowable will be assigned to this completion until all interests have been consolidated or a non-standard unit has been approved by the division.



District I
1625 N. French Dr., Hobbs, NM 88240
Phone:(575) 393-6161 Fax:(575) 393-0720
District II
811 S. First St., Artesia, NM 88210
Phone:(575) 748-1283 Fax:(575) 748-9720
District III
1000 Rio Brazos Rd., Aztec, NM 87410
Phone:(505) 334-6178 Fax:(505) 334-6170
District IV
1220 S. St Francis Dr., Santa Fe, NM 87505
Phone:(505) 476-3470 Fax:(505) 476-3462

State of New Mexico
Energy, Minerals and Natural Resources
Oil Conservation Division
1220 S. St Francis Dr.
Santa Fe, NM 87505

CONDITIONS

Action 217664

CONDITIONS

| | |
|--|--|
| Operator: TAP ROCK OPERATING, LLC 523 Park Point Drive Golden, CO 80401 | OGRID: 372043 |
| | Action Number: 217664 |
| | Action Type: [C-103] Sub. General Sundry (C-103Z) |

CONDITIONS

| Created By | Condition | Condition Date |
|------------|---|----------------|
| dmcclure | Please review the content of the Administrative Order and approved request(s) to ensure you are familiar with the authorities granted and any conditions of approval. If you have any questions regarding this matter, please contact me. | 5/18/2023 |