

District I (575) 393-6161  
 1625 N. French Dr., Hobbs, NM 88240  
 District II (575) 748-1283  
 811 S. First St., Artesia, NM 88210  
 District III (505) 334-6178  
 1000 Rio Brazos Road, Aztec, NM 87410  
 District IV (505) 827-8198  
 1220 S. St. Francis Dr., Santa Fe, NM 87505

State of New Mexico  
 Energy Minerals and Natural Resources

Oil Conservation Division  
 1220 South St. Francis Dr.  
 Santa Fe, NM 87505

Form C-106  
 Revised August 1, 2011

**C106-913**

ACT Permit No.

**NOTICE OF INTENTION TO UTILIZE AUTOMATIC CUSTODY TRANSFER EQUIPMENT**

Operator Enduring Resources IV, LLC

Address 200 Energy Court Farmington, NM 87401 County San Juan

Lease(s) to be served by this ACT Unit: NMNM144419A (Greater Lybrook Unit)

Pool(s) to be served by this ACT Unit (98157) LYBROOK MANCOS W

Location of ACT System: Unit J Section 23 Township 23N Range 9W

Order No. authorizing commingling between leases if more than one lease is to be served by this system.

R-22081 Date 4/4/2022

Order No. authorizing commingling between pools if more than one pool is to be served by this system

N/A Date N/A

Authorized transporter of oil from this system Whiptail Midstream

Transporter's address 15 West 6th Street Suite 2901 Tulsa OK 74119

Maximum expected daily through-put for this system: 6,000 BBL/Day

If system fails to transfer oil due to malfunction or otherwise, waste by overflow will be averted by:

CHECK ONE: A. ☐ Automatic shut-down facilities B. ☒ Providing adequate available capacity to receive production  
 as required by 19.15.18.15.C(8) NMAC during maximum unattended time of lease operation  
 19.15.18.15.C(9) NMAC

If "A" above is checked, will flowing wells be shut-in at the header manifold or at the wellhead?

NA Maximum well-head shut-in pressure N/A

If "B" above is checked, how much storage capacity is available above the normal high working level of the

surge tank 125 BBLs.

What is the normal maximum unattended time of lease operation? Sixteen (16) Hours.

What device will be used for measuring oil in this ACT unit?

CHECK ONE: ☐ Positive displacement meter ☐ Weir-type measuring vessel  
☐ Positive volume metering chamber ☒ Other; describe Coriolis Meter

Remarks: This LACT will be selling to pipeline.

**OPERATOR:**

I hereby certify above information is true and complete to best of my knowledge and subject ACT system will be installed and operated in accordance with Rule 19.15.18.15 NMAC. Approval of this Form C-106 does not eliminate necessity of an approved C-104 prior to running any oil or gas from this system.

Signature Heather Huntington

Printed Name & Title Heather Huntington Permitting Tech

E-mail Address hhuntington@enduringresources.com

Date 5/24/23 Telephone (505) 636-9751

**OIL CONSERVATION DIVISION**

Approved by: Dean R McIlure

Title: Petroleum Engineer

Date: 05/31/2023

**INSTRUCTIONS:** Submit one copy of Form C-106 with following attachments to appropriate district office.

- 1) Lease plat showing all wells which will be produced in ACT system.
- 2) Schematic diagram of battery and ACT equipment showing all major components and means employed to prove accuracy of measuring device.
- 3) Letter from transporter agreeing to utilization of ACT system as shown on schematic diagram.

**NOTICE OF INTENTION TO UTILIZE AUTOMATIC CUSTODY TRANSFER EQUIPMENT  
GREATER LYBROOK UNIT 720H PAD PIPELINE LACT UNIT**

**WELLS TO BE SERVED BY PIPELINE LACT UNIT:**

- **GREATER LYBROOK UNIT 720H/ API # 30-045-38260/ UNIT J Sec. 23, T23N, R9W, NMPM**
- **GREATER LYBROOK UNIT 724H/ API # 30-045-38261/ UNIT J Sec. 23, T23N, R9W, NMPM**
- **GREATER LYBROOK UNIT 756H/ API # 30-045-38262/ UNIT J Sec. 23, T23N, R9W, NMPM**
- **GREATER LYBROOK UNIT 757H/ API # 30-045-38263/ UNIT J Sec. 23, T23N, R9W, NMPM**
- **GREATER LYBROOK UNIT 758H/ API # 30-045-38264/ UNIT J Sec. 23, T23N, R9W, NMPM**

**19.15.18.15 AUTOMATIC CUSTODY TRANSFER EQUIPMENT:**

**A.** Oil shall be received and measured in facilities of an approved design. The facilities shall permit the testing of each well at reasonable intervals and may be comprised of manually gauged, closed stock tanks for which the operator of the ACT system has prepared proper strapping tables, or of ACT equipment. The division shall permit ACT equipment's use only after the operator complies with the following. The operator shall file with the division form C-106 and receive approval for use of the ACT equipment prior to transferring oil through the ACT system. The carrier shall not accept delivery of oil through the ACT system until the division has approved form C-106.

- ***Summary is attached to Form C-106 Notice of Intent to Utilize Automatic Custody Transfer Equipment***

**B.** The operator of the ACT system shall submit form C-106 to the appropriate division district office, which is accompanied by the following:

- (1) plat of the lease showing all wells that the any well operator will produce into the ACT system;
  - ***Attached as part of Form C-106 Notice of Intent***
- (2) schematic diagram of the ACT equipment, showing on the diagram all major components such as surge tanks and their capacity, extra storage tanks and their capacity, transfer pumps, monitors, reroute valves, treaters, samplers, strainers, air and gas eliminators, back pressure valves and metering devices (indicating type and capacity, *i.e.* whether automatic measuring tank, positive volume metering chamber, weir-type measuring vessel or positive displacement meter); the schematic diagram shall also show means employed to prove the measuring device's accuracy; and

- ***Attached as part of Form C-106 Notice of Intent***

- (3) letter from transporter agreeing to utilization of ACT system as shown on schematic diagram.

- ***Attached as part of Form C-106 Notice of Intent***

**C.** The division shall not approve form C-106 unless the operator of the ACT system will install and operate the ACT system in compliance with the following requirements.

(1) Provision is made for accurate determination and recording of uncorrected volume and applicable temperature, or of temperature corrected volume. The system's overall accuracy shall equal or surpass manual methods.

- ***The LACT system is more accurate when compared to a manual tank sale. It is proved per BLM Onshore Order #4 Measurement of Oil and API MPMS Chapter 4 Proving Systems; with a volumetric prover that meets the requirements set forth in Onshore Order #4. The LACT also has a temperature RTD which will be calibrated semi-annually, unless more frequent verification is requested by the division.***

(2) Provision is made for representative sampling of the oil transferred for determination of API gravity and BS&W content.

- ***The LACT is equipped with a flow proportional sampler (sample probe and actuated valve). The sampled fluid is stored in a sealed cylinder that is used for API gravity and S&W determination.***

(3) Provision is made if required by either the oil's producer or the transporter to give adequate assurance that the ACT system runs only merchantable oil.

- ***The LACT is equipped with a water cut analyzer that communicates with the flow computer. When the S&W set point is reached the divert valve will engage sending non-merchantable oil to a divert tank. The set point can be adjusted in the flow computer but only if agreed upon by both shipper and producer.***

(4) Provision is made for set-stop counters to stop the flow of oil through the ACT system at or prior to the time the allowable has been run. Counters shall provide non-reset totalizers that are visible for inspection at all times.

- ***The Coriolis meter has non-resettable totalizer which is always visibly available on the LCD display.***

(5) Necessary controls and equipment are enclosed and sealed, or otherwise arranged to provide assurance against, or evidence of, accidental or purposeful mismeasurement resulting from tampering.

- ***Required ports are sealed and tracked in the seal log.***

(6) The ACT system's components are properly sized to ensure operation within the range of their established ratings. All system components that require periodic calibration or inspection for proof of continued accuracy are readily accessible; the frequency and methods of the calibration or inspection shall be as set forth in Paragraph (12) of Subsection C of 19.15.18.15 NMAC.

- ***The Coriolis is proved per BLM Onshore Order #4 Measurement of Oil and API MPMS Chapter 4 Proving Systems; with a volumetric prover that meets the requirements set forth in Onshore Order #4. The prover is NIST traceable and water drawn on a bi-annual basis. Proving will be consistent with Onshore Order #4, unless a variance is granted by the Division. NMOCD representatives are sent the schedule to witness if desired. The temperature transmitter is verified on a semi-annual basis, unless more frequent verification is requested by the Division. The water cut analyzer is calibrated as needed.***

(7) The control and recording system includes adequate fail-safe features that provide assurance against mismeasurement in the event of power failure, or the failure of the ACT system's component parts.

- ***In the event of power failure, the divert valve mechanically goes to "failed state" and no longer sales oil but only sends it to the divert tank.***
- ***All of the historized volume data is stored in flow computer memory with battery backup and is also transmitted by SCADA, multiple times a day, to an office server. So even during a power failure no oil volume is lost.***
- ***In the event of a malfunction, the LACT unit is programmed to shut off and divert valve is forced to close and no longer sales oil but only sends it to the divert tank. The malfunction is also logged by the flow computer.***

(8) The ACT system and allied facilities include fail-safe equipment as may be necessary, including high level switches in the surge tank or overflow storage tank that, in the event of power failure or malfunction of the ACT or other equipment, will shut down artificially lifted wells connected to the ACT system and will shut in flowing wells at the well-head or at the header manifold, in which latter case the operator of the ACT system shall pressure test all flowlines to at least 1½ times the maximum well-head shut-in pressure prior to the ACT system's initial use and every two years thereafter.

- ***Hi level switches are in place and will shut the well in at the inlet to the production unit in the event of a full tank. Flow lines were tested to 1 ½ times shut in pressure at initial construction. Testing will commence every two years to ensure piping integrity.***

(9) As an alternative to the requirements of Paragraph (8) of Subsection C of 19.15.18.15 NMAC the producer shall provide and at all times maintain a minimum of available storage capacity above the normal high working level of the surge tank to receive and hold the amount of oil that may be produced during maximum unattended time of lease operation.

- ***N/A***

(10) In all ACT systems employing automatic measuring tanks, weir-type measuring vessels, positive volume metering chambers or any other volume measuring container, the container and allied components shall be properly calibrated prior to initial use and shall be operated, maintained and inspected as necessary to ensure against incrustation, changes in clingage factors, valve leakage or other leakage and improper action of floats, level detectors, etc.

- ***N/A – Coriolis Meter***

(11) In ACT systems employing positive displacement meters, the meter and allied components shall be properly calibrated prior to initial use and shall be operated, maintained and inspected as necessary to ensure against oil mismeasurement.

- ***The Coriolis is proved per BLM Onshore Order #4 Measurement of Oil and API MPMS Chapter 4 Proving Systems; with a volumetric prover that meets the requirements set forth in Onshore***

***Order #4. The prover is NIST traceable and water drawn on a bi-annual basis. Monthly proving will continue per the rule, unless a variance is granted by the Division. NMOCD representatives are sent the schedule to witness if desired. The temperature transmitter is verified on a semi-annual basis, unless more frequent verification is requested by the Division.***

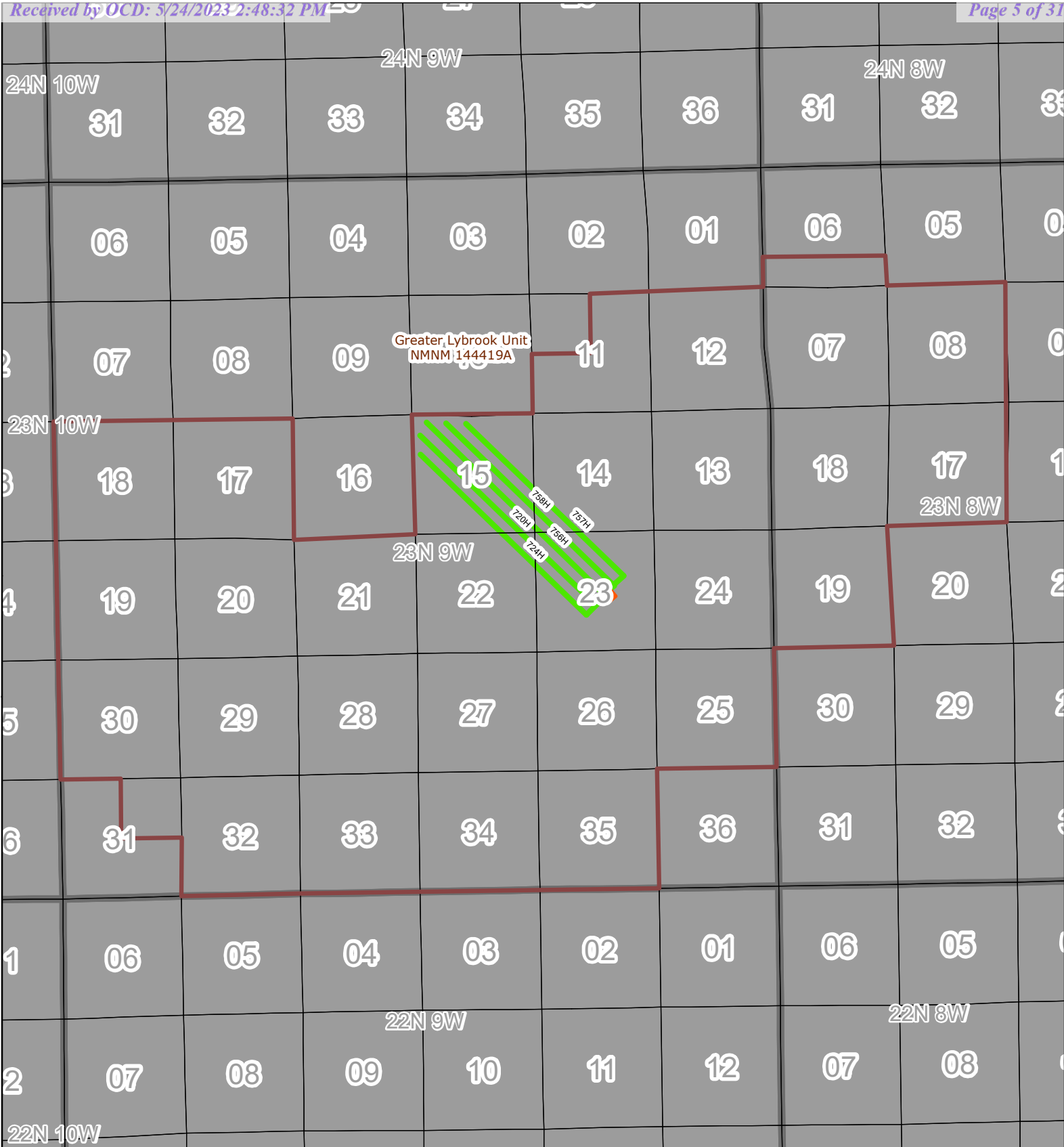
(12) The operator of the ACT system shall check the measuring and recording devices of ACT systems for accuracy at least once each month unless it has obtained an exception to such determination from the division. Where applicable, the operator of the ACT system shall use API standard 1101, Measurement of Petroleum Hydrocarbons by Positive Displacement Meter. Meters may be proved against master meters, portable prover tanks or prover tanks permanently installed on the lease. If the operator of the ACT system uses permanently installed prover tanks, the distance between the opening and closing levels and the provision for determining the opening and closing readings shall be sufficient to detect variations of 5/100 of one percent. The operator of the ACT system shall file reports of determination on the division form entitled "meter test report" or on another acceptable form in duplicate with the appropriate division district office.

- ***The Coriolis is proved per BLM Onshore Order #4 Measurement of Oil and API MPMS Chapter 4 Proving Systems; with a volumetric prover that meets the requirements set forth in Onshore Order #4. The prover is NIST traceable and water drawn on a bi-annual basis. Monthly proving will continue per the rule, unless a variance is granted by the Division. NMOCD representatives are sent the schedule to witness if desired. The temperature transmitter is verified on a semi-annual basis, unless more frequent verification is requested by the Division.***

(13) To obtain an exception to the requirement in Paragraph (12) of Subsection C of 19.15.18.15 NMAC that all measuring and recording devices be checked for accuracy once each month, either the producer or transporter may file a request with the director setting forth facts pertinent to the exception. The application shall include a history of the average factors previously obtained, both tabulated and plotted on a graph of factors versus time, showing that the particular installation has experienced no erratic drift. The applicant shall also furnish evidence that the other interested party has agreed to the exception. The director may then set the frequency for determination of the system's accuracy at the interval which the director deems prudent.

- *N/A*

**D.** The division may revoke its approval of an ACT system's form C-106 if the system's operator fails to operate it in compliance with 19.15.18.15 NMAC.



# GLU 720H Lease Plat Map

- LATERALS
- Unit Boundary
- PADS
- Section
- Township

0 0.5 1 Miles



**ENDURING  
RESOURCES, LLC**

Data Source Statement:  
BLM-FFO, Enduring Resources GIS, ESRI Inc.,  
NCE Surveys, USGS

Author: drogers

Date: 5/24/2023



District I  
1220 S. St. Francis Drive, Santa Fe, NM 87505  
Phone: (505) 393-6161 Fax: (505) 393-0720  
District II  
811 S. First Street, Artesia, NM 88210  
Phone: (505) 748-1283 Fax: (505) 748-9720  
District III  
1000 Rio Brazos Road, Aztec, NM 87410  
Phone: (505) 334-6178 Fax: (505) 334-6170  
District IV  
1220 S. St. Francis Drive, Santa Fe, NM 87505  
Phone: (505) 476-3460 Fax: (505) 476-3462

Submit one copy to  
Appropriate District Office

**OIL CONSERVATION DIVISION**  
**1220 South St. Francis Drive**  
**Santa Fe, NM 87505**

☐ AMENDED REPORT

**AS-DRILLED WELL LOCATION AND ACREAGE DEDICATION PLAT**

<sup>1</sup> API Number <b>30-045-38260</b>	<sup>2</sup> Pool Code <b>98157</b>	<sup>3</sup> Pool Name <b>LYBROOK MANCOS W</b>
<sup>4</sup> Property Code <b>332891</b>	<sup>5</sup> Property Name <b>GREATER LYBROOK UNIT</b>	<sup>6</sup> Well Number <b>720H</b>
<sup>7</sup> GRID No. <b>372286</b>	<sup>8</sup> Operator Name <b>ENDURING RESOURCES, LLC</b>	<sup>9</sup> Elevation <b>6719'</b>

<sup>10</sup> Surface Location

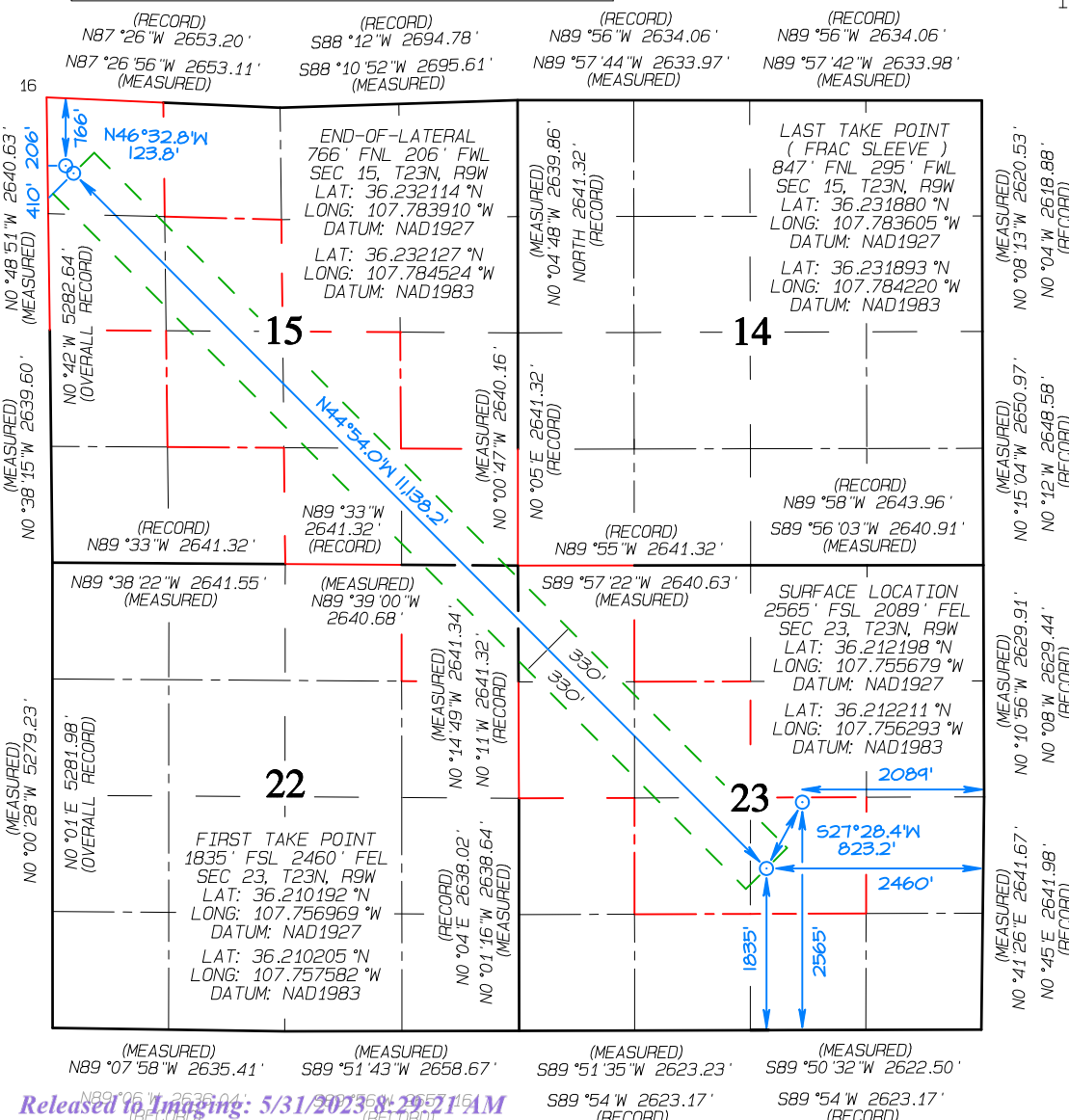
UL or lot no.	Section	Township	Range	Lot Idn	Feet from the	North/South line	Feet from the	East/West line	County
J	23	23N	9W		2565	SOUTH	2089	EAST	SAN JUAN

<sup>11</sup> Bottom Hole Location If Different From Surface

UL or lot no.	Section	Township	Range	Lot Idn	Feet from the	North/South line	Feet from the	East/West line	County
D	15	23N	9W		766	NORTH	206	WEST	SAN JUAN

<sup>12</sup> Dedicated Acres <b>520.00</b>	<b>NE/4 NE/4 - Section 22</b> <b>W/2 NW/4, SE/4 NW/4</b> <b>NE/4 SW/4, NW/4 SE/4 - Section 23</b> <b>W/2 NW/4, SE/4 NW/4, NE/4 SW/4</b> <b>W/2 SE/4, SE/4 SE/4 - Section 15</b>	<sup>13</sup> Joint or Infill	<sup>14</sup> Consolidation Code	<sup>15</sup> Order No. <b>R-22081</b>
--	---	-------------------------------	----------------------------------	---

NO ALLOWABLE WILL BE ASSIGNED  
TO THIS COMPLETION UNTIL ALL  
INTERESTS HAVE BEEN CONSOLIDATED  
OR A NON-STANDARD UNIT HAS  
BEEN APPROVED BY THE DIVISION



<sup>17</sup> OPERATOR CERTIFICATION

I hereby certify that the information contained herein is true and complete to the best of my knowledge and belief, and that this organization either owns a working interest or unleased mineral interest in the land including the proposed bottom-hole location or has a right to drill this well at this location pursuant to a contract with an owner of such a mineral or working interest, or to a voluntary pooling agreement or a compulsory pooling order heretofore entered by the division.

*Heather Huntington* **7/20/22**  
Signature Date  
**Heather Huntington**  
Printed Name  
**hhuntington@enduringresources.com**  
E-mail Address

<sup>18</sup> SURVEYOR CERTIFICATION

I hereby certify that the well location shown on this plat was plotted from field notes of actual surveys made by me or under my supervision, and that the same is true and correct to the best of my belief.

Date Revised: JUNE 13, 2022  
Survey Date: OCTOBER 19, 2015

Signature and Seal of Professional Surveyor



**JASON C. EDWARDS**  
Certificate Number 15269

District I  
Phone: (575) 393-6161 Fax: (575) 393-0720  
District II  
811 S. First Street, Artesia, NM 88210  
Phone: (575) 748-1283 Fax: (575) 748-9720  
District III  
1000 Rio Brazos Road, Aztec, NM 87410  
Phone: (505) 334-6178 Fax: (505) 334-6170  
District IV  
1220 S. St. Francis Drive, Santa Fe, NM 87505  
Phone: (505) 476-3460 Fax: (505) 476-3462

Submit one copy to  
Appropriate District Office

**OIL CONSERVATION DIVISION**  
**1220 South St. Francis Drive**  
**Santa Fe, NM 87505**

☐ AMENDED REPORT

**AS-DRILLED WELL LOCATION AND ACREAGE DEDICATION PLAT**

<sup>1</sup> API Number <b>30-045-38260</b>		<sup>2</sup> Pool Code <b>98157</b>		<sup>3</sup> Pool Name <b>LYBROOK MANCOS W</b>	
<sup>4</sup> Property Code <b>332891</b>		<sup>5</sup> Property Name <b>GREATER LYBROOK UNIT</b>			<sup>6</sup> Well Number <b>720H</b>
<sup>7</sup> GRID No. <b>372286</b>		<sup>8</sup> Operator Name <b>ENDURING RESOURCES, LLC</b>			<sup>9</sup> Elevation <b>6719'</b>

<sup>10</sup> Surface Location

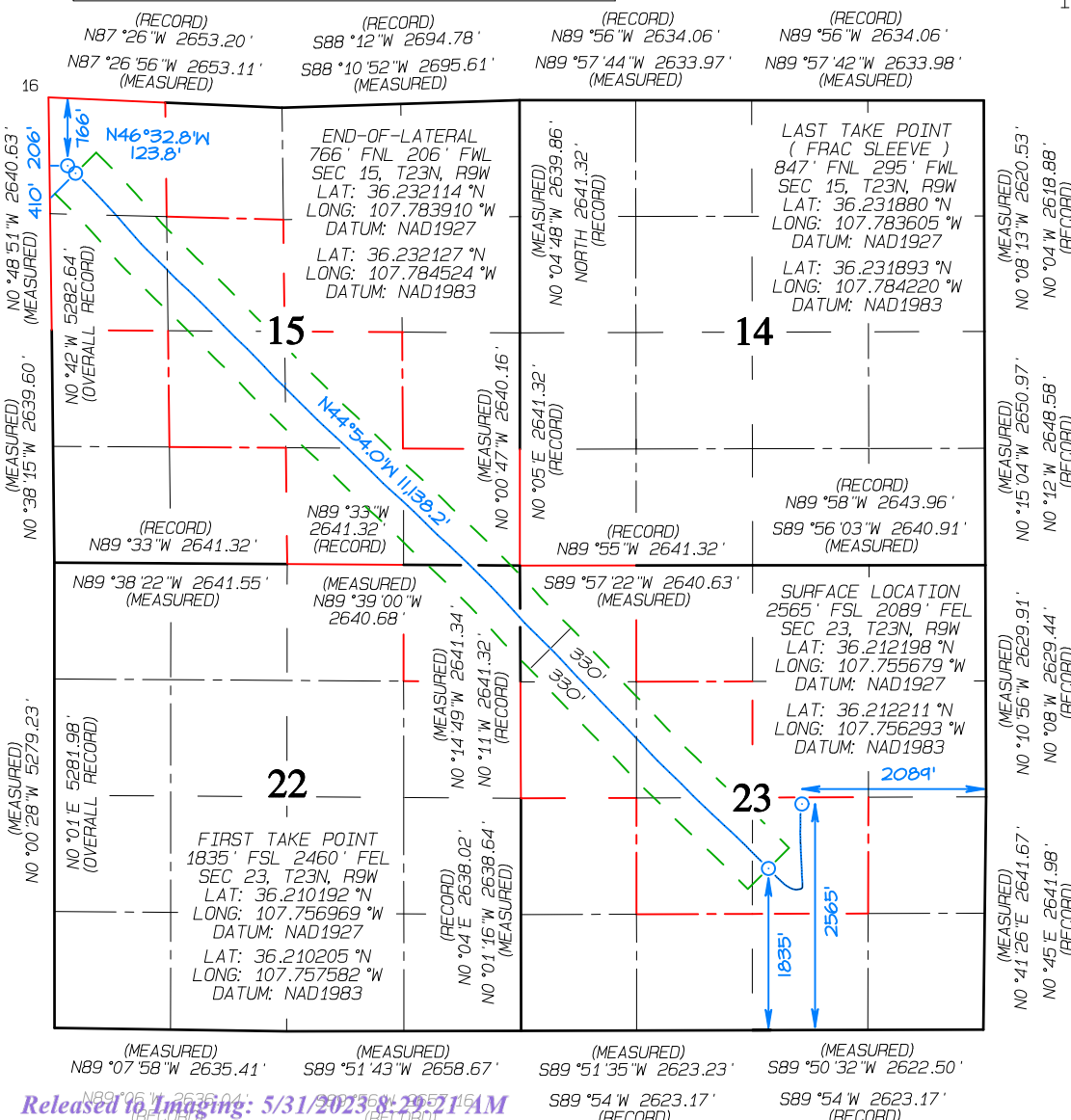
UL or lot no.	Section	Township	Range	Lot Idn	Feet from the	North/South line	Feet from the	East/West line	County
J	23	23N	9W		2565	SOUTH	2089	EAST	SAN JUAN

<sup>11</sup> Bottom Hole Location If Different From Surface

UL or lot no.	Section	Township	Range	Lot Idn	Feet from the	North/South line	Feet from the	East/West line	County
D	15	23N	9W		766	NORTH	206	WEST	SAN JUAN

<sup>12</sup> Dedicated Acres <b>520.00</b>		<sup>13</sup> Joint or Infill		<sup>14</sup> Consolidation Code		<sup>15</sup> Order No. <b>R-22081</b>	
NE/4 NE/4 - Section 22 W/2 NW/4, SE/4 NW/4 NE/4 SW/4, NW/4 SE/4 - Section 23 W/2 NW/4, SE/4 NW/4, NE/4 SW/4 W/2 SE/4, SE/4 SE/4 - Section 15							

NO ALLOWABLE WILL BE ASSIGNED  
TO THIS COMPLETION UNTIL ALL  
INTERESTS HAVE BEEN CONSOLIDATED  
OR A NON-STANDARD UNIT HAS  
BEEN APPROVED BY THE DIVISION



<sup>17</sup> OPERATOR CERTIFICATION

I hereby certify that the information contained herein is true and complete to the best of my knowledge and belief, and that this organization either owns a working interest or unleased mineral interest in the land including the proposed bottom-hole location or has a right to drill this well at this location pursuant to a contract with an owner of such a mineral or working interest, or to a voluntary pooling agreement or a compulsory pooling order heretofore entered by the division.

Signature: *Heather Huntington* Date: **7/20/22**

Printed Name: **Heather Huntington**

E-mail Address: **hhuntington@enduringresources.com**

<sup>18</sup> SURVEYOR CERTIFICATION

I hereby certify that the well location shown on this plat was plotted from field notes of actual surveys made by me or under my supervision, and that the same is true and correct to the best of my belief.

Date Revised: **JUNE 13, 2022**  
Survey Date: **OCTOBER 19, 2015**

Signature and Seal of Professional Surveyor



**JASON C. EDWARDS**  
Certificate Number 15269

District I  
1220 S. St. Francis Drive, Santa Fe, NM 87505  
Phone: (505) 393-6161 Fax: (505) 393-0720  
District II  
811 S. First Street, Artesia, NM 88210  
Phone: (505) 748-1283 Fax: (505) 748-9720  
District III  
1000 Rio Brazos Road, Aztec, NM 87410  
Phone: (505) 334-6178 Fax: (505) 334-6170  
District IV  
1220 S. St. Francis Drive, Santa Fe, NM 87505  
Phone: (505) 476-3460 Fax: (505) 476-3462

Submit one copy to  
Appropriate District Office

**OIL CONSERVATION DIVISION**  
**1220 South St. Francis Drive**  
**Santa Fe, NM 87505**

☐ AMENDED REPORT

**AS-DRILLED WELL LOCATION AND ACREAGE DEDICATION PLAT**

<sup>1</sup> API Number <b>30-045-38260</b>	<sup>2</sup> Pool Code <b>98157</b>	<sup>3</sup> Pool Name <b>LYBROOK MANCOS W</b>
<sup>4</sup> Property Code <b>332891</b>	<sup>5</sup> Property Name <b>GREATER LYBROOK UNIT</b>	<sup>6</sup> Well Number <b>720H</b>
<sup>7</sup> GRID No. <b>372286</b>	<sup>8</sup> Operator Name <b>ENDURING RESOURCES, LLC</b>	<sup>9</sup> Elevation <b>6719'</b>

<sup>10</sup> Surface Location

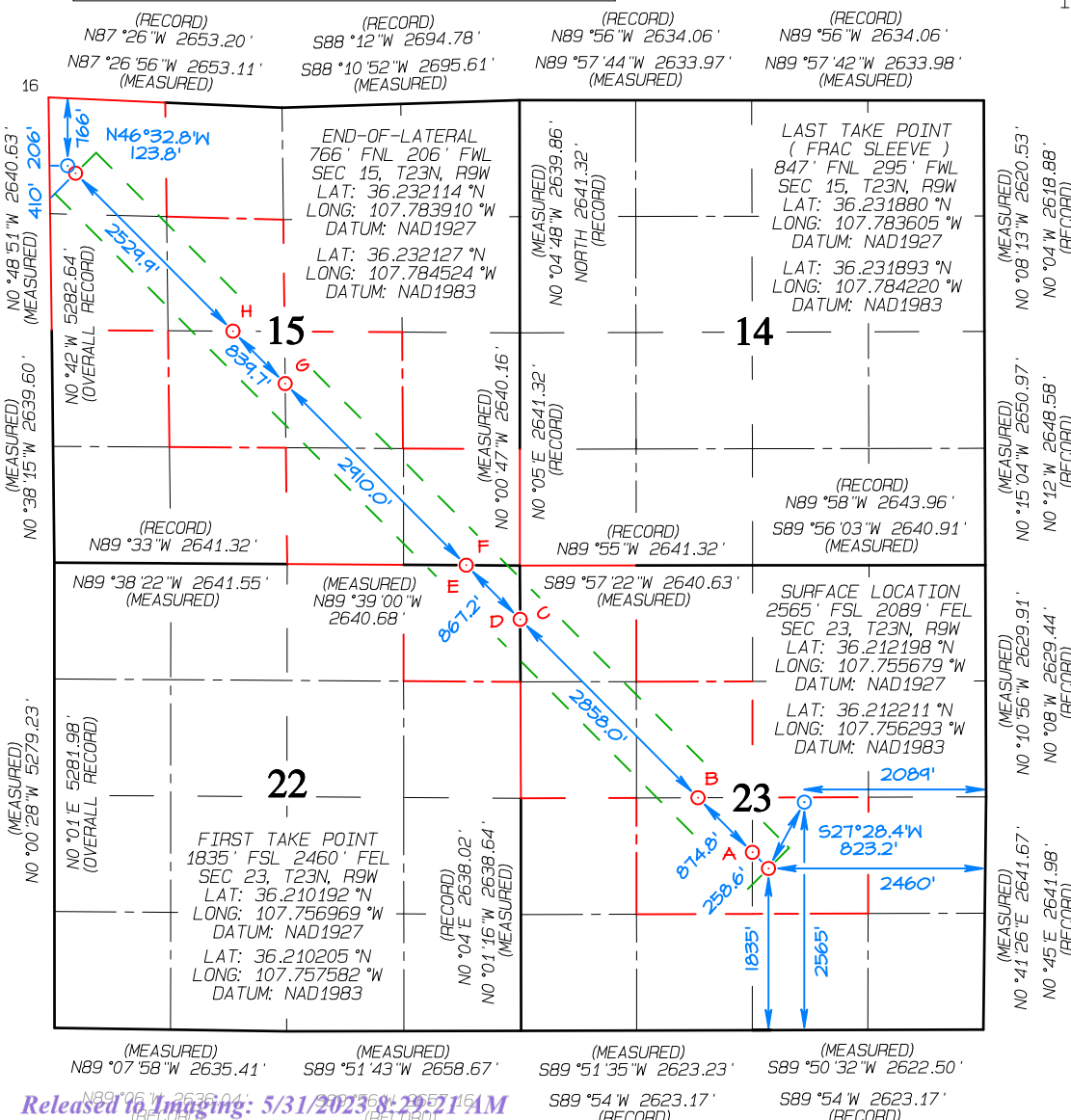
UL or lot no.	Section	Township	Range	Lot Idn	Feet from the	North/South line	Feet from the	East/West line	County
J	23	23N	9W		2565	SOUTH	2089	EAST	SAN JUAN

<sup>11</sup> Bottom Hole Location If Different From Surface

UL or lot no.	Section	Township	Range	Lot Idn	Feet from the	North/South line	Feet from the	East/West line	County
D	15	23N	9W		766	NORTH	206	WEST	SAN JUAN

<sup>12</sup> Dedicated Acres <b>520.00</b>	<b>NE/4 NE/4 - Section 22</b> <b>W/2 NW/4, SE/4 NW/4</b> <b>NE/4 SW/4, NW/4 SE/4- Section 23</b> <b>W/2 NW/4, SE/4 NW/4, NE/4 SW/4</b> <b>W/2 SE/4, SE/4 SE/4 - Section 15</b>	<sup>13</sup> Joint or Infill	<sup>14</sup> Consolidation Code	<sup>15</sup> Order No. <b>R-22081</b>
--	--	-------------------------------	----------------------------------	---

NO ALLOWABLE WILL BE ASSIGNED  
TO THIS COMPLETION UNTIL ALL  
INTERESTS HAVE BEEN CONSOLIDATED  
OR A NON-STANDARD UNIT HAS  
BEEN APPROVED BY THE DIVISION



<sup>17</sup> OPERATOR CERTIFICATION  
I hereby certify that the information contained herein is true and complete to the best of my knowledge and belief, and that this organization either owns a working interest or unleased mineral interest in the land including the proposed bottom-hole location or has a right to drill this well at this location pursuant to a contract with an owner of such a mineral or working interest, or to a voluntary pooling agreement or a compulsory pooling order heretofore entered by the division.

Signature Heather Huntington Date 7/20/22  
Printed Name Heather Huntington  
Email Address hhuntington@enduringresources.com

<sup>18</sup> SURVEYOR CERTIFICATION  
I hereby certify that the well location shown on this plat was plotted from field notes of actual surveys made by me or under my supervision, and that the same is true and correct to the best of my belief.

Date Revised: JUNE 13, 2022  
Survey Date: OCTOBER 19, 2015

Signature and Seal of Professional Surveyor



**JASON C. EDWARDS**  
Certificate Number 15269



(A) 2019' FSL 2626' FWL  
SEC 23, T23N, R9W  
LAT: 36.210695 °N  
LONG: 107.757587 °W  
DATUM: NAD1927

LAT: 36.210709 °N  
LONG: 107.758201 °W  
DATUM: NAD1983

(B) 2640' FSL 2009' FWL  
SEC 23, T23N, R9W  
LAT: 36.212399 °N  
LONG: 107.759679 °W  
DATUM: NAD1927

LAT: 36.212412 °N  
LONG: 107.760292 °W  
DATUM: NAD1983

(C) 611' FNL 0' FWL  
SEC 23, T23N, R9W  
LAT: 36.217965 °N  
LONG: 107.766512 °W  
DATUM: NAD1927

LAT: 36.217978 °N  
LONG: 107.767126 °W  
DATUM: NAD1983

(D) 611' FNL 0' FEL  
SEC 22, T23N, R9W  
LAT: 36.217965 °N  
LONG: 107.766512 °W  
DATUM: NAD1927

LAT: 36.217978 °N  
LONG: 107.767126 °W  
DATUM: NAD1983

(E) 0' FNL 610' FEL  
SEC 22, T23N, R9W  
LAT: 36.219653 °N  
LONG: 107.768586 °W  
DATUM: NAD1927

LAT: 36.219666 °N  
LONG: 107.769200 °W  
DATUM: NAD1983

(F) 0' FSL 610' FEL  
SEC 15, T23N, R9W  
LAT: 36.219653 °N  
LONG: 107.768586 °W  
DATUM: NAD1927

LAT: 36.219666 °N  
LONG: 107.769200 °W  
DATUM: NAD1983

(G) 2049' FSL 2663' FEL  
SEC 15, T23N, R9W  
LAT: 36.225319 °N  
LONG: 107.775545 °W  
DATUM: NAD1927

LAT: 36.225332 °N  
LONG: 107.776160 °W  
DATUM: NAD1983

(H) 2640' FSL 2055' FWL  
SEC 15, T23N, R9W  
LAT: 36.226954 °N  
LONG: 107.777554 °W  
DATUM: NAD1927

LAT: 36.226967 °N  
LONG: 107.778168 °W  
DATUM: NAD1983

District I  
601 S. First Street, Artesia, NM 88210  
Phone: (575) 393-6161 Fax: (575) 393-0720

District II  
811 S. First Street, Artesia, NM 88210  
Phone: (575) 748-1283 Fax: (575) 748-9720

District III  
1000 Rio Brazos Road, Aztec, NM 87410  
Phone: (505) 334-6178 Fax: (505) 334-6170

District IV  
1220 S. St. Francis Drive, Santa Fe, NM 87505  
Phone: (505) 476-3460 Fax: (505) 476-3462

Submit one copy to  
Appropriate District Office

**OIL CONSERVATION DIVISION**  
**1220 South St. Francis Drive**  
**Santa Fe, NM 87505**

☐ AMENDED REPORT

**AS-DRILLED WELL LOCATION AND ACREAGE DEDICATION PLAT**

<sup>1</sup> API Number <b>30-045-38261</b>	<sup>2</sup> Pool Code <b>98157</b>	<sup>3</sup> Pool Name <b>LYBROOK MANCOS W</b>
<sup>4</sup> Property Code <b>332891</b>	<sup>5</sup> Property Name <b>GREATER LYBROOK UNIT</b>	<sup>6</sup> Well Number <b>724H</b>
<sup>7</sup> GRID No. <b>372286</b>	<sup>8</sup> Operator Name <b>ENDURING RESOURCES, LLC</b>	<sup>9</sup> Elevation <b>6719'</b>

<sup>10</sup> Surface Location

UL or lot no.	Section	Township	Range	Lot Idn	Feet from the	North/South line	Feet from the	East/West line	County
J	23	23N	9W		2549	SOUTH	2076	EAST	SAN JUAN

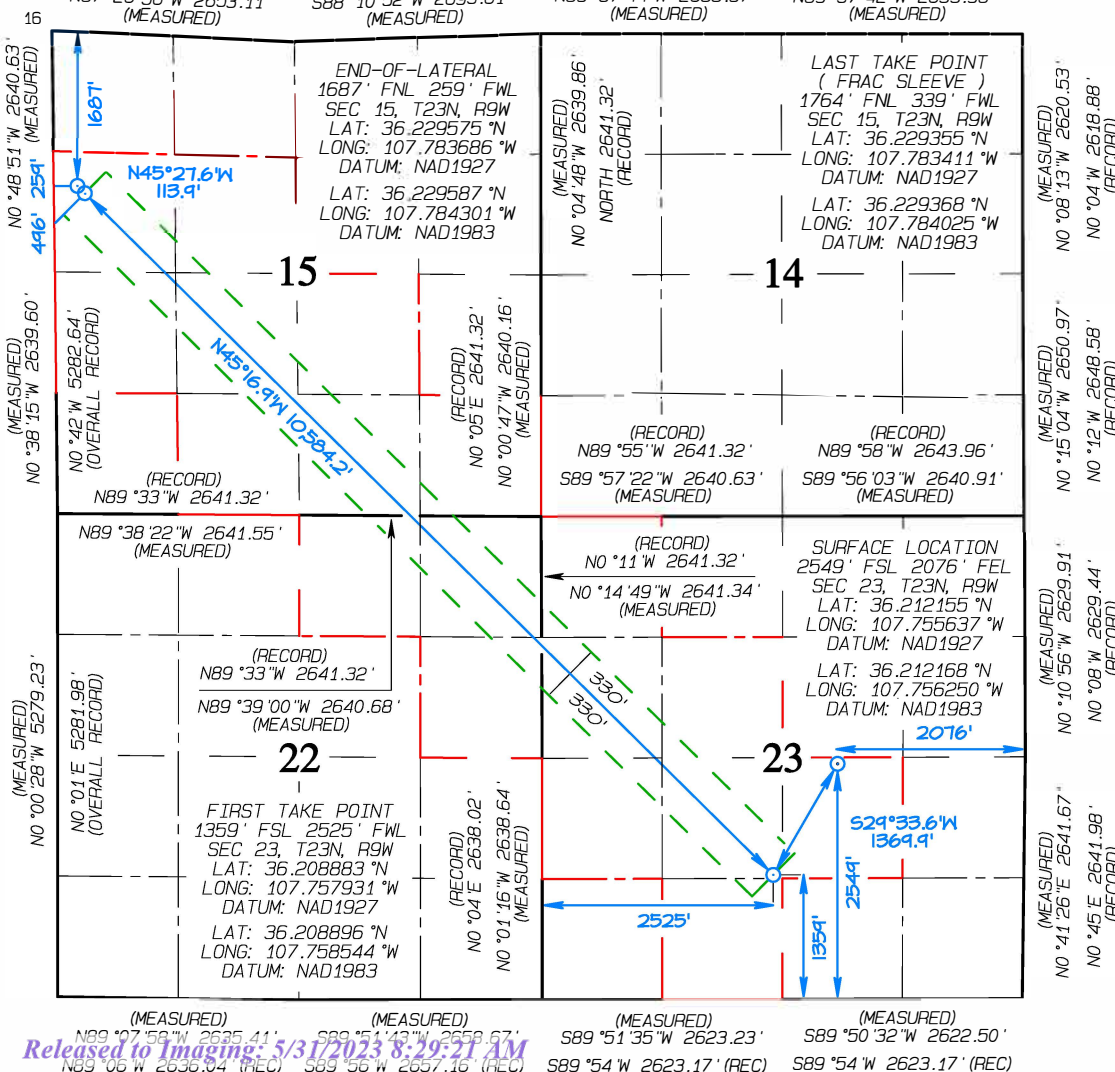
<sup>11</sup> Bottom Hole Location If Different From Surface

UL or lot no.	Section	Township	Range	Lot Idn	Feet from the	North/South line	Feet from the	East/West line	County
E	15	23N	9W		1687	NORTH	259	WEST	SAN JUAN

<sup>12</sup> Dedicated Acres <b>720.00</b>	<sup>13</sup> Joint or Infill	<sup>14</sup> Consolidation Code	<sup>15</sup> Order No. <b>R-22081</b>
S/2 NW/4, N/2 SW/4, SE/4 SW/4 W/2 SE/4, SE/4 SE/4 - Sec 15 N/2 NE/4, SE/4 NE/4 - Sec 22 W/2 NW/4, SE/4 NW/4, N/2 SW/4 SE/4 SW/4, NW/4 SE/4 - Sec 23			

NO ALLOWABLE WILL BE ASSIGNED TO THIS COMPLETION  
UNTIL ALL INTERESTS HAVE BEEN CONSOLIDATED OR A  
NON-STANDARD UNIT HAS BEEN APPROVED BY THE DIVISION

N87°26'W 2653.20' (REC) S88°12'W 2694.78' (REC) N89°56'W 2634.06' (REC) N89°56'W 2634.06' (REC)  
N87°26'56"W 2653.11' (MEASURED) S88°10'52"W 2695.61' (MEASURED) N89°57'44"W 2633.97' (MEASURED) N89°57'42"W 2633.98' (MEASURED)



**17 OPERATOR CERTIFICATION**

I hereby certify that the information contained herein is true and complete to the best of my knowledge and belief, and that this organization either owns a working interest or unleased mineral interest in the land including the proposed bottom-hole location or has a right to drill this well at this location pursuant to a contract with an owner of such a mineral or working interest, or to a voluntary pooling agreement or a compulsory pooling order heretofore entered by the division.

Signature: Heather Huntington Date: 7/20/22  
 Printed Name: Heather Huntington  
 E-mail Address: hhuntington@enduringresources.com

**18 SURVEYOR CERTIFICATION**

I hereby certify that the well location shown on this plat was plotted from field notes of actual surveys made by me or under my supervision, and that the same is true and correct to the best of my belief.

Date Revised: JUNE 13, 2022  
 Survey Date: OCTOBER 19, 2015

Signature and Seal of Professional Surveyor



**JASON C. EDWARDS**  
 Certificate Number 15269

District II  
811 S. First Street, Artesia, NM 88210  
Phone: (575) 748-1283 Fax: (575) 748-9720

District III  
1000 Rio Brazos Road, Aztec, NM 87410  
Phone: (505) 334-6178 Fax: (505) 334-6170

District IV  
1220 S. St. Francis Drive, Santa Fe, NM 87505  
Phone: (505) 476-3460 Fax: (505) 476-3462

Submit one copy to  
Appropriate District Office

**OIL CONSERVATION DIVISION**  
**1220 South St. Francis Drive**  
**Santa Fe, NM 87505**

☐ AMENDED REPORT

**AS-DRILLED WELL LOCATION AND ACREAGE DEDICATION PLAT**

<sup>1</sup> API Number <b>30-045-38261</b>		<sup>2</sup> Pool Code <b>98157</b>		<sup>3</sup> Pool Name <b>LYBROOK MANCOS W</b>	
<sup>4</sup> Property Code <b>332891</b>		<sup>5</sup> Property Name <b>GREATER LYBROOK UNIT</b>			<sup>6</sup> Well Number <b>724H</b>
<sup>7</sup> GRID No. <b>372286</b>		<sup>8</sup> Operator Name <b>ENDURING RESOURCES, LLC</b>			<sup>9</sup> Elevation <b>6719'</b>

<sup>10</sup> Surface Location

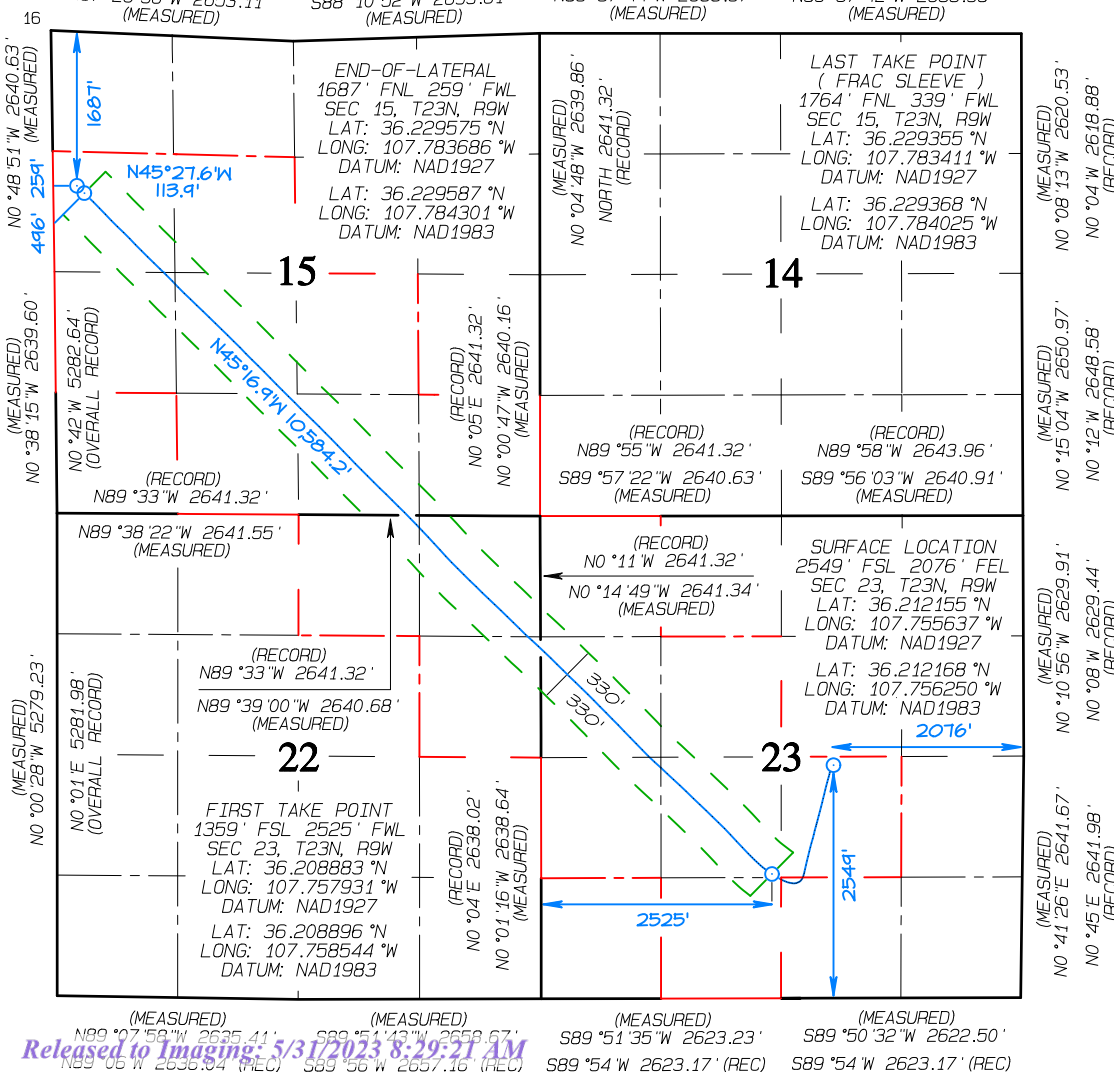
UL or lot no.	Section	Township	Range	Lot Idn	Feet from the	North/South line	Feet from the	East/West line	County
J	23	23N	9W		2549	SOUTH	2076	EAST	SAN JUAN

<sup>11</sup> Bottom Hole Location If Different From Surface

UL or lot no.	Section	Township	Range	Lot Idn	Feet from the	North/South line	Feet from the	East/West line	County
E	15	23N	9W		1687	NORTH	259	WEST	SAN JUAN

<sup>12</sup> Dedicated Acres <b>720.00</b>		<sup>13</sup> Joint or Infill		<sup>14</sup> Consolidation Code		<sup>15</sup> Order No. <b>R-22081</b>	
S/2 NW/4, N/2 SW/4, SE/4 SW/4 W/2 SE/4, SE/4 SE/4 - Sec 15 N/2 NE/4, SE/4 NE/4 - Sec 22 W/2 NW/4, SE/4 NW/4, N/2 SW/4 SE/4 SW/4, NW/4 SE/4 - Sec 23		NO ALLOWABLE WILL BE ASSIGNED TO THIS COMPLETION UNTIL ALL INTERESTS HAVE BEEN CONSOLIDATED OR A NON-STANDARD UNIT HAS BEEN APPROVED BY THE DIVISION					

N87°26'W 2653.20' (REC) S88°12'W 2694.78' (REC) N89°56'W 2634.06' (REC) N89°56'W 2634.06' (REC)  
N87°26'56"W 2653.11' (MEASURED) S88°10'52"W 2695.61' (MEASURED) N89°57'44"W 2633.97' (MEASURED) N89°57'42"W 2633.98' (MEASURED)



**17 OPERATOR CERTIFICATION**  
I hereby certify that the information contained herein is true and complete to the best of my knowledge and belief, and that this organization either owns a working interest or unleased mineral interest in the land including the proposed bottom-hole location or has a right to drill this well at this location pursuant to a contract with an owner of such a mineral or working interest, or to a voluntary pooling agreement or a compulsory pooling order heretofore entered by the division.

Signature: Heather Huntington Date: 7/20/22  
Printed Name: Heather Huntington  
E-mail Address: hhuntington@enduringresources.com

**18 SURVEYOR CERTIFICATION**  
I hereby certify that the well location shown on this plat was plotted from field notes of actual surveys made by me or under my supervision, and that the same is true and correct to the best of my belief.

Date Revised: JUNE 13, 2022  
Survey Date: OCTOBER 19, 2015

Signature and Seal of Professional Surveyor



**JASON C. EDWARDS**  
Certificate Number 15269

☐ AMENDED REPORT

**JASON C. EDWARDS**  
Certificate Number 15269



(A) 2638' FNL 1235' FWL  
SEC 23, T23N, R9W  
LAT: 36.212394 °N  
LONG: 107.762300 °W  
DATUM: NAD1927

LAT: 36.212407 °N  
LONG: 107.762913 °W  
DATUM: NAD1983

(B) 1409' FNL 0' FWL  
SEC 23, T23N, R9W  
LAT: 36.215772 °N  
LONG: 107.766503 °W  
DATUM: NAD1927

LAT: 36.215785 °N  
LONG: 107.767116 °W  
DATUM: NAD1983

(C) 1409' FNL 0' FEL  
SEC 22, T23N, R9W  
LAT: 36.215772 °N  
LONG: 107.766503 °W  
DATUM: NAD1927

LAT: 36.215785 °N  
LONG: 107.767116 °W  
DATUM: NAD1983

(D) 0' FNL 1426' FEL  
SEC 22, T23N, R9W  
LAT: 36.219668 °N  
LONG: 107.771352 °W  
DATUM: NAD1927

LAT: 36.219681 °N  
LONG: 107.771966 °W  
DATUM: NAD1983

(E) 0' FSL 1426' FEL  
SEC 15, T23N, R9W  
LAT: 36.219668 °N  
LONG: 107.771352 °W  
DATUM: NAD1927

LAT: 36.219681 °N  
LONG: 107.771966 °W  
DATUM: NAD1983

(F) 1209' FSL 2641' FWL  
SEC 15, T23N, R9W  
LAT: 36.223013 °N  
LONG: 107.775515 °W  
DATUM: NAD1927

LAT: 36.223026 °N  
LONG: 107.776130 °W  
DATUM: NAD1983

(G) 2640' FSL 1204' FWL  
SEC 15, T23N, R9W  
LAT: 36.226970 °N  
LONG: 107.780441 °W  
DATUM: NAD1927

LAT: 36.226983 °N  
LONG: 107.781056 °W  
DATUM: NAD1983



District I  
1000 Rio Brazos Road, Aztec, NM 87410  
Phone: (505) 393-6161 Fax: (505) 393-0720

District II  
811 S. First Street, Artesia, NM 88210  
Phone: (505) 748-1283 Fax: (505) 748-9720

District III  
1000 Rio Brazos Road, Aztec, NM 87410  
Phone: (505) 393-6178 Fax: (505) 393-6170

District IV  
1220 S. St. Francis Drive, Santa Fe, NM 87505  
Phone: (505) 476-3460 Fax: (505) 476-3462

Submit one copy to  
Appropriate District Office

**OIL CONSERVATION DIVISION**  
**1220 South St. Francis Drive**  
**Santa Fe, NM 87505**

☐ AMENDED REPORT

**AS-DRILLED WELL LOCATION AND ACREAGE DEDICATION PLAT**

<sup>1</sup> API Number <b>30-045-38262</b>	<sup>2</sup> Pool Code <b>98157</b>	<sup>3</sup> Pool Name <b>LYBROOK MANCOS W</b>
<sup>4</sup> Property Code <b>332891</b>	<sup>5</sup> Property Name <b>GREATER LYBROOK UNIT</b>	<sup>6</sup> Well Number <b>756H</b>
<sup>7</sup> GRID No. <b>372286</b>	<sup>8</sup> Operator Name <b>ENDURING RESOURCES, LLC</b>	<sup>9</sup> Elevation <b>6719'</b>

<sup>10</sup> Surface Location

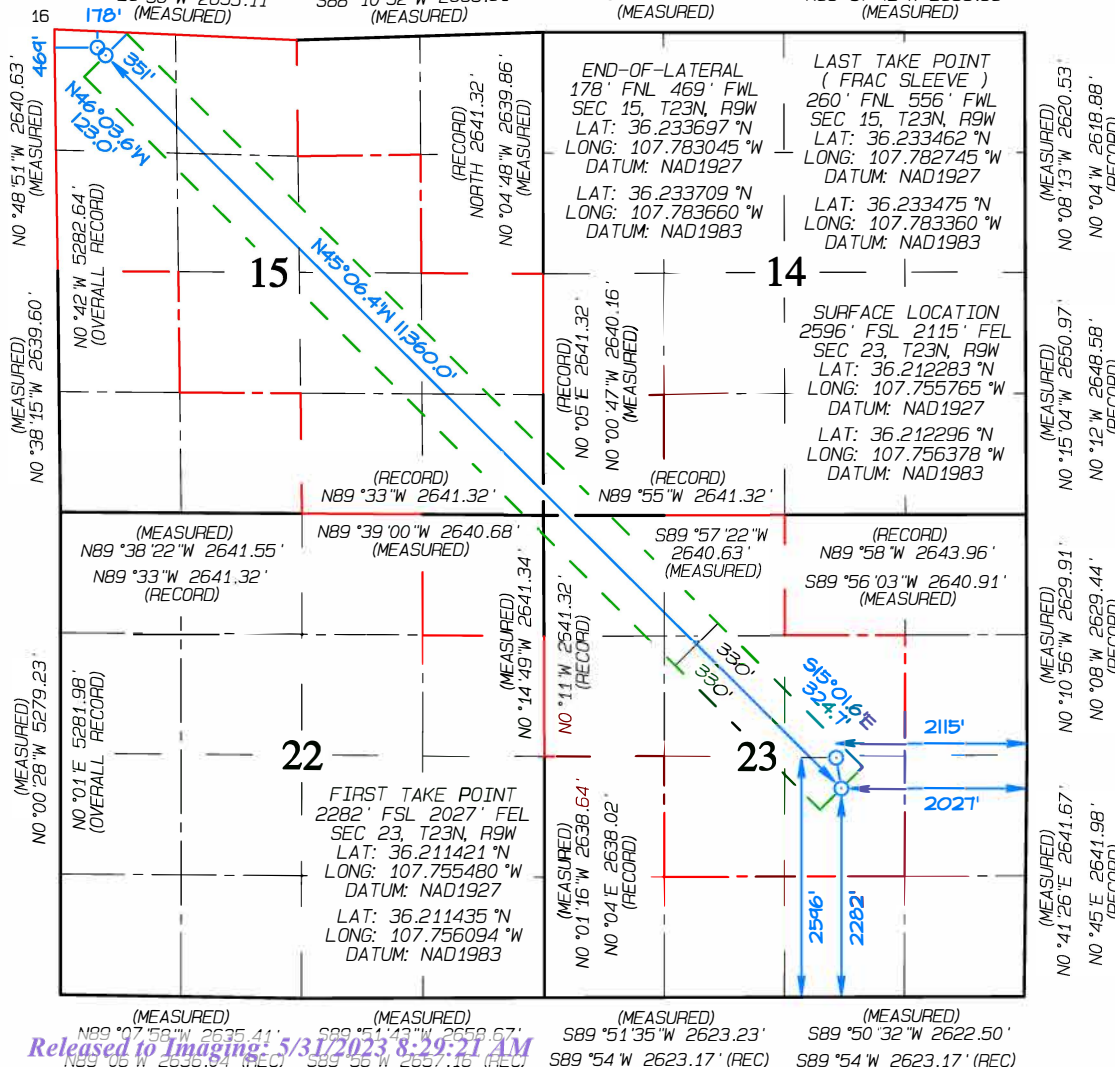
UL or lot no.	Section	Township	Range	Lot Idn	Feet from the	North/South line	Feet from the	East/West line	County
J	23	23N	9W		2596	SOUTH	2115	EAST	SAN JUAN

<sup>11</sup> Bottom Hole Location If Different From Surface

UL or lot no.	Section	Township	Range	Lot Idn	Feet from the	North/South line	Feet from the	East/West line	County
D	15	23N	9W		178	NORTH	469	WEST	SAN JUAN

<sup>12</sup> Dedicated Acres <b>760.00</b>	NW/4, SW/4 NE/4, NE/4 SW/4 NW/4 SE/4 - Section 23 NE/4 NE/4 - Section 22 NW/4, SW/4 NE/4 NE/4 SW/4, SE/4 - Section 15 SW/4 SW/4 - Section 14	<sup>13</sup> Joint or Infill	<sup>14</sup> Consolidation Code	<sup>15</sup> Order No. <b>R-22081</b>
NO ALLOWABLE WILL BE ASSIGNED TO THIS COMPLETION UNTIL ALL INTERESTS HAVE BEEN CONSOLIDATED OR A NON-STANDARD UNIT HAS BEEN APPROVED BY THE DIVISION				

NB7°26'W 2653.20' (REC) S88°12'W 2694.78' (REC) NB9°56'W 2634.06' (REC) NB9°56'W 2634.06' (REC)  
NB7°26'56"W 2653.11' S88°10'52"W 2695.61' (MEASURED) NB9°57'44"W 2633.97' (MEASURED) NB9°57'42"W 2633.98' (MEASURED)



**17 OPERATOR CERTIFICATION**  
I hereby certify that the information contained herein is true and complete to the best of my knowledge and belief, and that this organization either owns a working interest or unleased mineral interest in the land including the proposed bottom-hole location or has a right to drill this well at this location pursuant to a contract with an owner of such a mineral or working interest, or to a voluntary pooling agreement or a compulsory pooling order heretofore entered by the division.

Signature: Heather Huntington Date: 7/20/22  
Printed Name: Heather Huntington  
E-mail Address: hhuntington@enduringresources.com

**18 SURVEYOR CERTIFICATION**  
I hereby certify that the well location shown on this plat was plotted from field notes of actual surveys made by me or under my supervision, and that the same is true and correct to the best of my belief.

Date Revised: JUNE 15, 2022  
Survey Date: OCTOBER 19, 2015

Signature and Seal of Professional Surveyor



**JASON C. EDWARDS**  
Certificate Number 15269

District I  
1000 Rio Brazos Road, Aztec, NM 87410  
Phone: (505) 334-6178 Fax: (505) 334-6170

District II  
811 S. First Street, Artesia, NM 88210  
Phone: (505) 748-1283 Fax: (505) 748-9720

District III  
1000 Rio Brazos Road, Aztec, NM 87410  
Phone: (505) 334-6178 Fax: (505) 334-6170

District IV  
1220 S. St. Francis Drive, Santa Fe, NM 87505  
Phone: (505) 476-3460 Fax: (505) 476-3462

Submit one copy to  
Appropriate District Office

**OIL CONSERVATION DIVISION**  
**1220 South St. Francis Drive**  
**Santa Fe, NM 87505**

☐ AMENDED REPORT

AS-DRILLED WELL LOCATION AND ACREAGE DEDICATION PLAT

<sup>1</sup> API Number <b>30-045-38262</b>	<sup>2</sup> Pool Code <b>98157</b>	<sup>3</sup> Pool Name <b>LYBROOK MANCOS W</b>
<sup>4</sup> Property Code <b>332891</b>	<sup>5</sup> Property Name <b>GREATER LYBROOK UNIT</b>	<sup>6</sup> Well Number <b>756H</b>
<sup>7</sup> GRID No. <b>372286</b>	<sup>8</sup> Operator Name <b>ENDURING RESOURCES, LLC</b>	<sup>9</sup> Elevation <b>6719'</b>

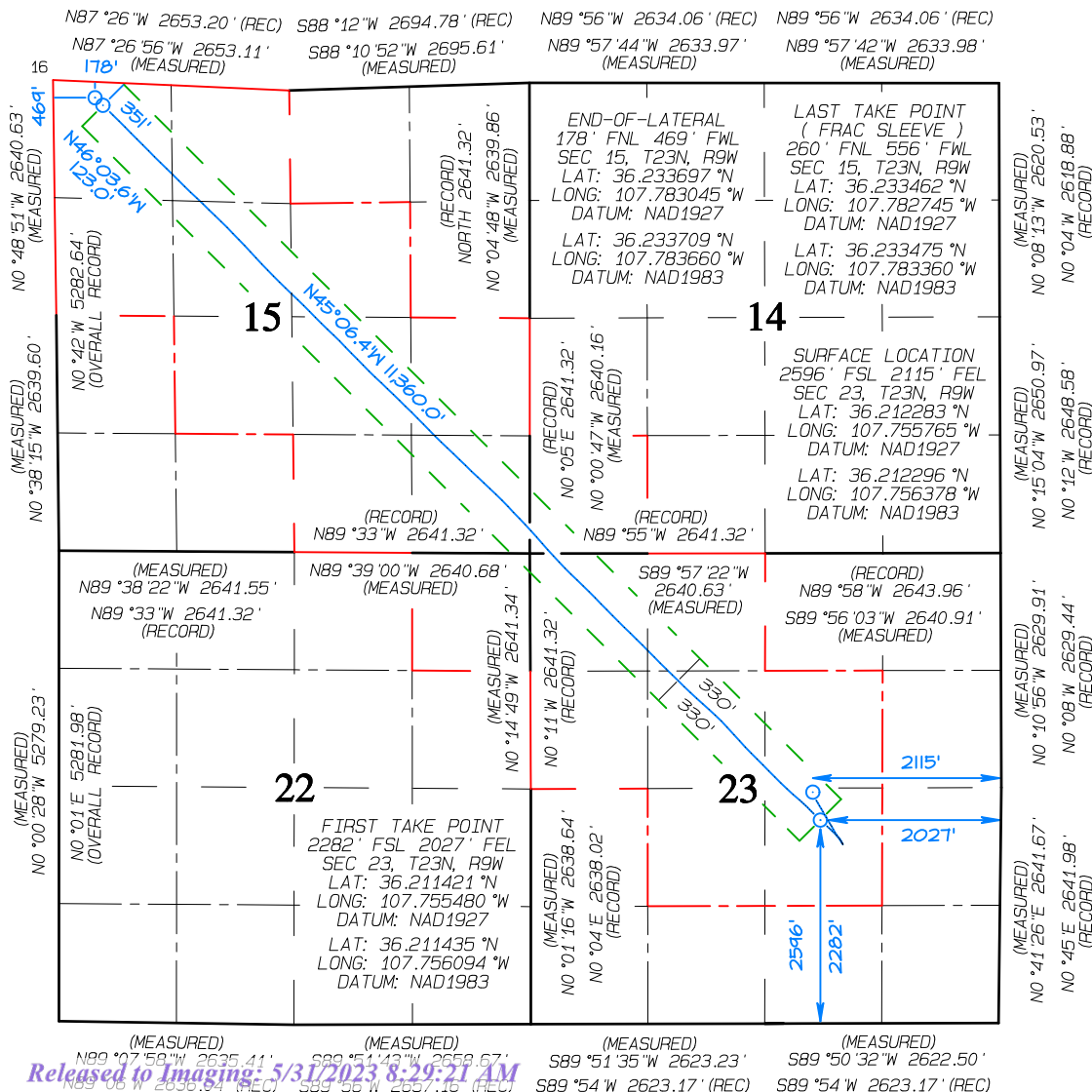
<sup>10</sup> Surface Location

UL or lot no.	Section	Township	Range	Lot Idn	Feet from the	North/South line	Feet from the	East/West line	County
J	23	23N	9W		2596	SOUTH	2115	EAST	SAN JUAN

<sup>11</sup> Bottom Hole Location If Different From Surface

UL or lot no.	Section	Township	Range	Lot Idn	Feet from the	North/South line	Feet from the	East/West line	County
D	15	23N	9W		178	NORTH	469	WEST	SAN JUAN

<sup>12</sup> Dedicated Acres <b>760.00</b>	NW/4, SW/4 NE/4, NE/4 SW/4 NW/4 SE/4 - Section 23 NE/4 NE/4 - Section 22 NW/4, SW/4 NE/4 NE/4 SW/4, SE/4 - Section 15 SW/4 SW/4 - Section 14	<sup>13</sup> Joint or Infill	<sup>14</sup> Consolidation Code	<sup>15</sup> Order No. <b>R-22081</b>
NO ALLOWABLE WILL BE ASSIGNED TO THIS COMPLETION UNTIL ALL INTERESTS HAVE BEEN CONSOLIDATED OR A NON-STANDARD UNIT HAS BEEN APPROVED BY THE DIVISION				



**17 OPERATOR CERTIFICATION**  
I hereby certify that the information contained herein is true and complete to the best of my knowledge and belief, and that this organization either owns a working interest or unleased mineral interest in the land including the proposed bottom-hole location or has a right to drill this well at this location pursuant to a contract with an owner of such a mineral or working interest, or to a voluntary pooling agreement or a compulsory pooling order heretofore entered by the division.

Signature: Heather Huntington Date: 7/20/22  
Printed Name: Heather Huntington  
E-mail Address: hhuntington@enduringresources.com

**18 SURVEYOR CERTIFICATION**  
I hereby certify that the well location shown on this plat was plotted from field notes of actual surveys made by me or under my supervision, and that the same is true and correct to the best of my belief.

Date Revised: JUNE 15, 2022  
Survey Date: OCTOBER 19, 2015

Signature and Seal of Professional Surveyor

**JASON C. EDWARDS**  
NEW MEXICO  
REGISTERED PROFESSIONAL SURVEYOR  
15269  
Certificate Number 15269

District II  
811 S. First Street, Artesia, NM 88210  
Phone: (575) 748-1283 Fax: (575) 748-9720

District III  
1000 Rio Brazos Road, Aztec, NM 87410  
Phone: (505) 334-6178 Fax: (505) 334-6170

District IV  
1220 S. St. Francis Drive, Santa Fe, NM 87505  
Phone: (505) 476-3460 Fax: (505) 476-3462

Submit one copy to  
Appropriate District Office

**OIL CONSERVATION DIVISION**  
**1220 South St. Francis Drive**  
**Santa Fe, NM 87505**

☐ AMENDED REPORT

AS-DRILLED WELL LOCATION AND ACREAGE DEDICATION PLAT

<sup>1</sup> API Number <b>30-045-38262</b>		<sup>2</sup> Pool Code <b>98157</b>		<sup>3</sup> Pool Name <b>LYBROOK MANCOS W</b>	
<sup>4</sup> Property Code <b>332891</b>		<sup>5</sup> Property Name <b>GREATER LYBROOK UNIT</b>			<sup>6</sup> Well Number <b>756H</b>
<sup>7</sup> GRID No. <b>372286</b>		<sup>8</sup> Operator Name <b>ENDURING RESOURCES, LLC</b>			<sup>9</sup> Elevation <b>6719'</b>

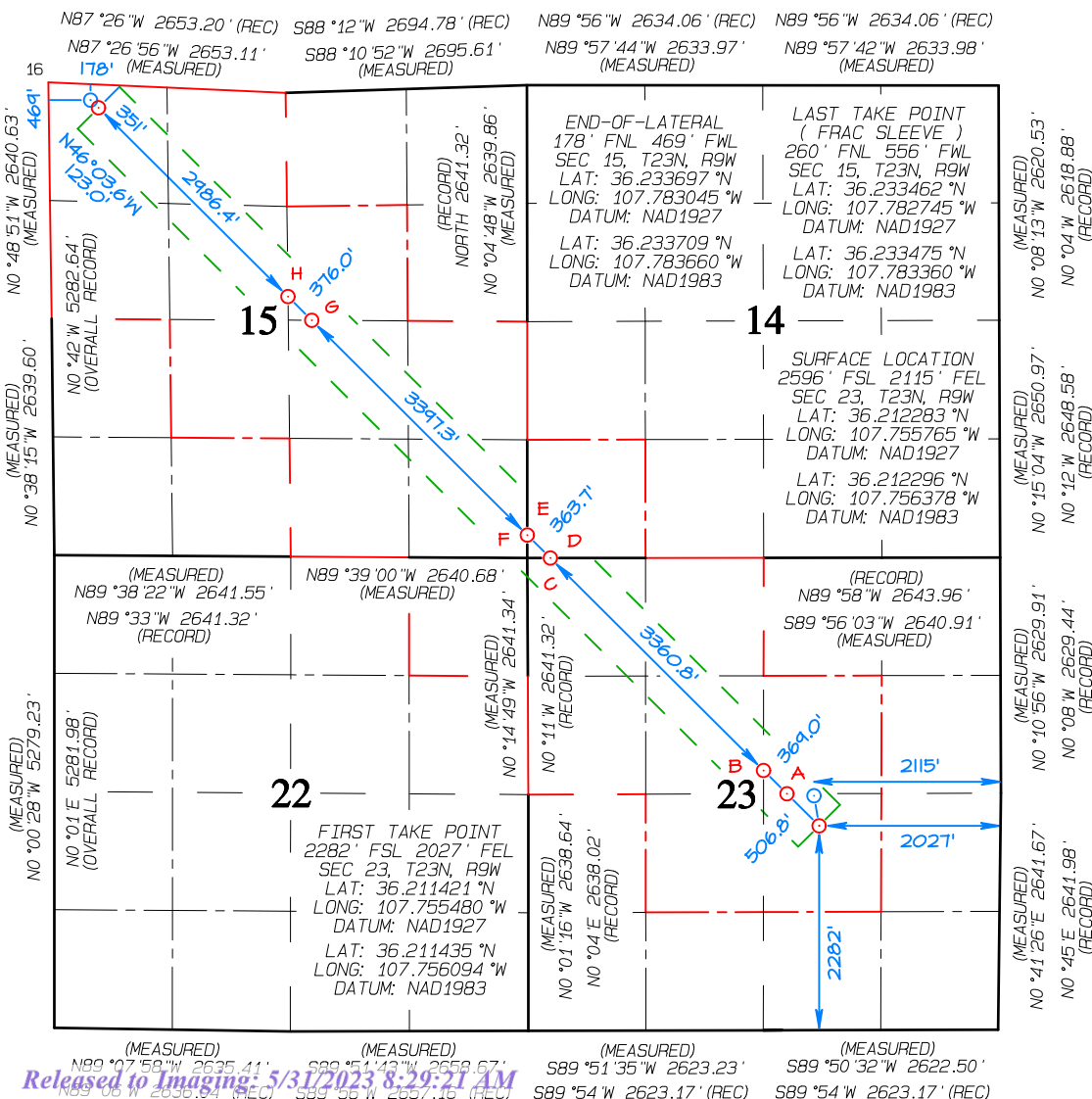
<sup>10</sup> Surface Location

UL or lot no.	Section	Township	Range	Lot Idn	Feet from the	North/South line	Feet from the	East/West line	County
J	23	23N	9W		2596	SOUTH	2115	EAST	SAN JUAN

<sup>11</sup> Bottom Hole Location If Different From Surface

UL or lot no.	Section	Township	Range	Lot Idn	Feet from the	North/South line	Feet from the	East/West line	County
D	15	23N	9W		178	NORTH	469	WEST	SAN JUAN

<sup>12</sup> Dedicated Acres <b>760.00</b>		NW/4, SW/4 NE/4, NE/4 SW/4 NW/4 SE/4 - Section 23 NE/4 NE/4 - Section 22 NW/4, SW/4 NE/4 NE/4 SW/4, SE/4 - Section 15 SW/4 SW/4 - Section 14		<sup>13</sup> Joint or Infill	<sup>14</sup> Consolidation Code	<sup>15</sup> Order No. <b>R-22081</b>
NO ALLOWABLE WILL BE ASSIGNED TO THIS COMPLETION UNTIL ALL INTERESTS HAVE BEEN CONSOLIDATED OR A NON-STANDARD UNIT HAS BEEN APPROVED BY THE DIVISION						



<sup>17</sup> OPERATOR CERTIFICATION

I hereby certify that the information contained herein is true and complete to the best of my knowledge and belief, and that this organization either owns a working interest or unleased mineral interest in the land including the proposed bottom-hole location or has a right to drill this well at this location pursuant to a contract with an owner of such a mineral or working interest, or to a voluntary pooling agreement or a compulsory pooling order heretofore entered by the division.

Signature: Heather Huntington Date: 7/20/22

Printed Name: Heather Huntington

E-mail Address: hhuntington@enduringresources.com

<sup>18</sup> SURVEYOR CERTIFICATION

I hereby certify that the well location shown on this plat was plotted from field notes of actual surveys made by me or under my supervision, and that the same is true and correct to the best of my belief.

Date Revised: JUNE 15, 2022  
Survey Date: OCTOBER 19, 2015

Signature and Seal of Professional Surveyor



**JASON C. EDWARDS**  
Certificate Number 15269

(A) 2641' FSL 2390' FEL  
SEC 23, T23N, R9W  
LAT: 36.212405 °N  
LONG: 107.756696 °W  
DATUM: NAD1927

LAT: 36.212418 °N  
LONG: 107.757310 °W  
DATUM: NAD1983

(B) 2374' FNL 2628' FWL  
SEC 23, T23N, R9W  
LAT: 36.213121 °N  
LONG: 107.757582 °W  
DATUM: NAD1927

LAT: 36.213134 °N  
LONG: 107.758195 °W  
DATUM: NAD1983

(C) 0' FNL 258' FWL  
SEC 23, T23N, R9W  
LAT: 36.219642 °N  
LONG: 107.765647 °W  
DATUM: NAD1927

LAT: 36.219655 °N  
LONG: 107.766261 °W  
DATUM: NAD1983

(D) 0' FSL 258' FWL  
SEC 14, T23N, R9W  
LAT: 36.219642 °N  
LONG: 107.765647 °W  
DATUM: NAD1927

LAT: 36.219655 °N  
LONG: 107.766261 °W  
DATUM: NAD1983

(E) 257' FSL 0' FWL  
SEC 14, T23N, R9W  
LAT: 36.220348 °N  
LONG: 107.766519 °W  
DATUM: NAD1927

LAT: 36.220361 °N  
LONG: 107.767133 °W  
DATUM: NAD1983

(F) 257' FSL 0' FEL  
SEC 15, T23N, R9W  
LAT: 36.220348 °N  
LONG: 107.766519 °W  
DATUM: NAD1927

LAT: 36.220361 °N  
LONG: 107.767133 °W  
DATUM: NAD1983

(G) 2640' FSL 2406' FEL  
SEC 15, T23N, R9W  
LAT: 36.226939 °N  
LONG: 107.774674 °W  
DATUM: NAD1927

LAT: 36.226952 °N  
LONG: 107.775288 °W  
DATUM: NAD1983

(H) 2275' FNL 2642' FWL  
SEC 15, T23N, R9W  
LAT: 36.227668 °N  
LONG: 107.775576 °W  
DATUM: NAD1927

LAT: 36.227681 °N  
LONG: 107.776190 °W  
DATUM: NAD1983



District I  
 811 S. First Street, Artesia, NM 88210  
 Phone: (505) 393-6161 Fax: (505) 393-0720

District II  
 1000 Rio Brazos Road, Aztec, NM 87410  
 Phone: (505) 748-1283 Fax: (505) 748-9720

District III  
 1220 S. St. Francis Drive, Santa Fe, NM 87505  
 Phone: (505) 476-3460 Fax: (505) 476-3462

District IV  
 1220 S. St. Francis Drive, Santa Fe, NM 87505  
 Phone: (505) 476-3460 Fax: (505) 476-3462

Submit one copy to  
Appropriate District Office

OIL CONSERVATION DIVISION  
1220 South St. Francis Drive  
Santa Fe, NM 87505

☐ AMENDED REPORT

## AS-DRILLED WELL LOCATION AND ACREAGE DEDICATION PLAT

<sup>1</sup> API Number 30-045-38263		<sup>2</sup> Pool Code 98157	<sup>3</sup> Pool Name LYBROOK MANCOS W	
<sup>4</sup> Property Code 332891	<sup>5</sup> Property Name GREATER LYBROOK UNIT			<sup>6</sup> Well Number 757H
<sup>7</sup> OGRID No. 372286	<sup>8</sup> Operator Name ENDURING RESOURCES, LLC			<sup>9</sup> Elevation 6719'

<sup>10</sup> Surface Location

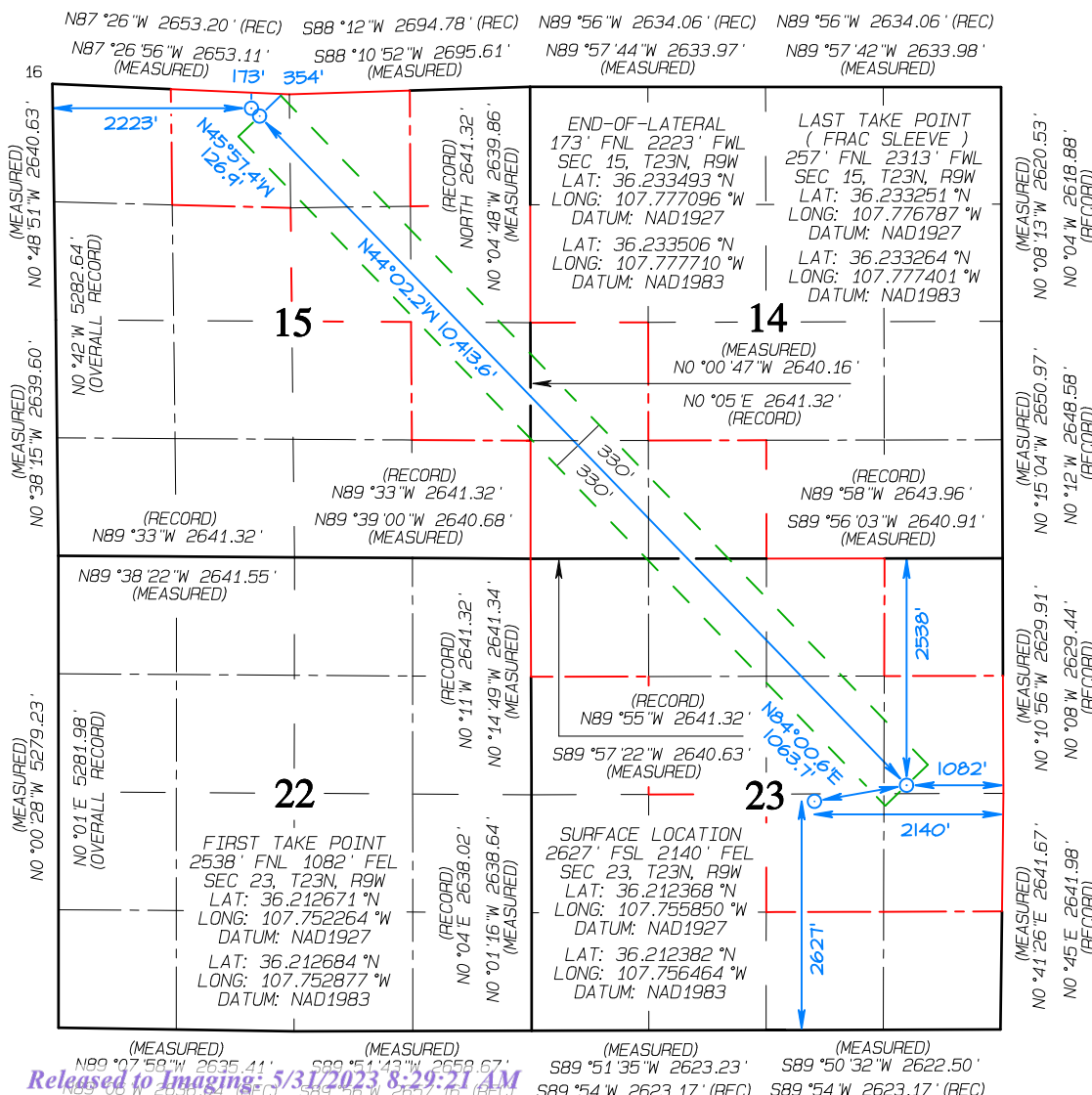
UL or lot no.	Section	Township	Range	Lot Idn	Feet from the	North/South line	Feet from the	East/West line	County
J	23	23N	9W		2627	SOUTH	2140	EAST	SAN JUAN

<sup>11</sup> Bottom Hole Location If Different From Surface

UL or lot no.	Section	Township	Range	Lot Idn	Feet from the	North/South line	Feet from the	East/West line	County
C	15	23N	9W		173	NORTH	2223	WEST	SAN JUAN

<sup>12</sup> Dedicated Acres 640.00 N/2 NW/4, SE/4 NW/4 W/2 NE/4, SE/4 NE/4 N/2 SE/4 - Sec 23 NE/4 NW/4, W/2 NE/4 SE/4 NE/4, NE/4 SE/4 - Sec 15 W/2 SW/4, SE/4 SW/4 - Sec 14	<sup>13</sup> Joint or Infill <sup>14</sup> Consolidation Code <sup>15</sup> Order No. R-22081
	NO ALLOWABLE WILL BE ASSIGNED TO THIS COMPLETION UNTIL ALL INTERESTS HAVE BEEN CONSOLIDATED OR A NON-STANDARD UNIT HAS BEEN APPROVED BY THE DIVISION

NO ALLOWABLE WILL BE ASSIGNED TO THIS COMPLETION  
UNTIL ALL INTERESTS HAVE BEEN CONSOLIDATED OR A  
NON-STANDARD UNIT HAS BEEN APPROVED BY THE DIVISION



## 17 OPERATOR CERTIFICATION

I hereby certify that the information contained herein is true and complete to the best of my knowledge and belief, and that this organization either owns a working interest or unleased mineral interest in the land including the proposed bottom-hole location or has a right to drill this well at this location pursuant to a contract with an owner of such a mineral or working interest, or to a voluntary pooling agreement or a compulsory pooling order heretofore entered by the division.

Heath H. 7/20/22

Signature	Date
-----------	------

**Heather Huntington**  
Printed Name

hhuntington@enduringresources.com

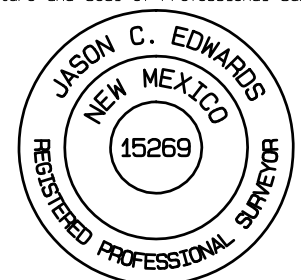
E-mail Address

## 18 SURVEYOR CERTIFICATION

I hereby certify that the well location shown on this plat was plotted from field notes of actual surveys made by me or under my supervision, and that the same is true and correct to the best of my belief.

Date Revised: JUNE 15, 2022  
Survey Date: OCTOBER 19, 2015

Signature and Seal of Professional Surveyor



JASON C. EDWARDS

Certificate Number	15269
--------------------	-------



District II  
811 S. First Street, Artesia, NM 88210  
Phone: (575) 748-1283 Fax: (575) 748-9720

District III  
1000 Rio Brazos Road, Aztec, NM 87410  
Phone: (505) 334-6178 Fax: (505) 334-6170

District IV  
1220 S. St. Francis Drive, Santa Fe, NM 87505  
Phone: (505) 476-3460 Fax: (505) 476-3462

OIL CONSERVATION DIVISION  
1220 South St. Francis Drive  
Santa Fe, NM 87505

Submit one copy to  
Appropriate District Office

☐ AMENDED REPORT

AS-DRILLED WELL LOCATION AND ACREAGE DEDICATION PLAT

<sup>1</sup> API Number <b>30-045-38263</b>	<sup>2</sup> Pool Code <b>98157</b>	<sup>3</sup> Pool Name <b>LYBROOK MANCOS W</b>
<sup>4</sup> Property Code <b>332891</b>	<sup>5</sup> Property Name <b>GREATER LYBROOK UNIT</b>	<sup>6</sup> Well Number <b>757H</b>
<sup>7</sup> GRID No. <b>372286</b>	<sup>8</sup> Operator Name <b>ENDURING RESOURCES, LLC</b>	<sup>9</sup> Elevation <b>6719'</b>

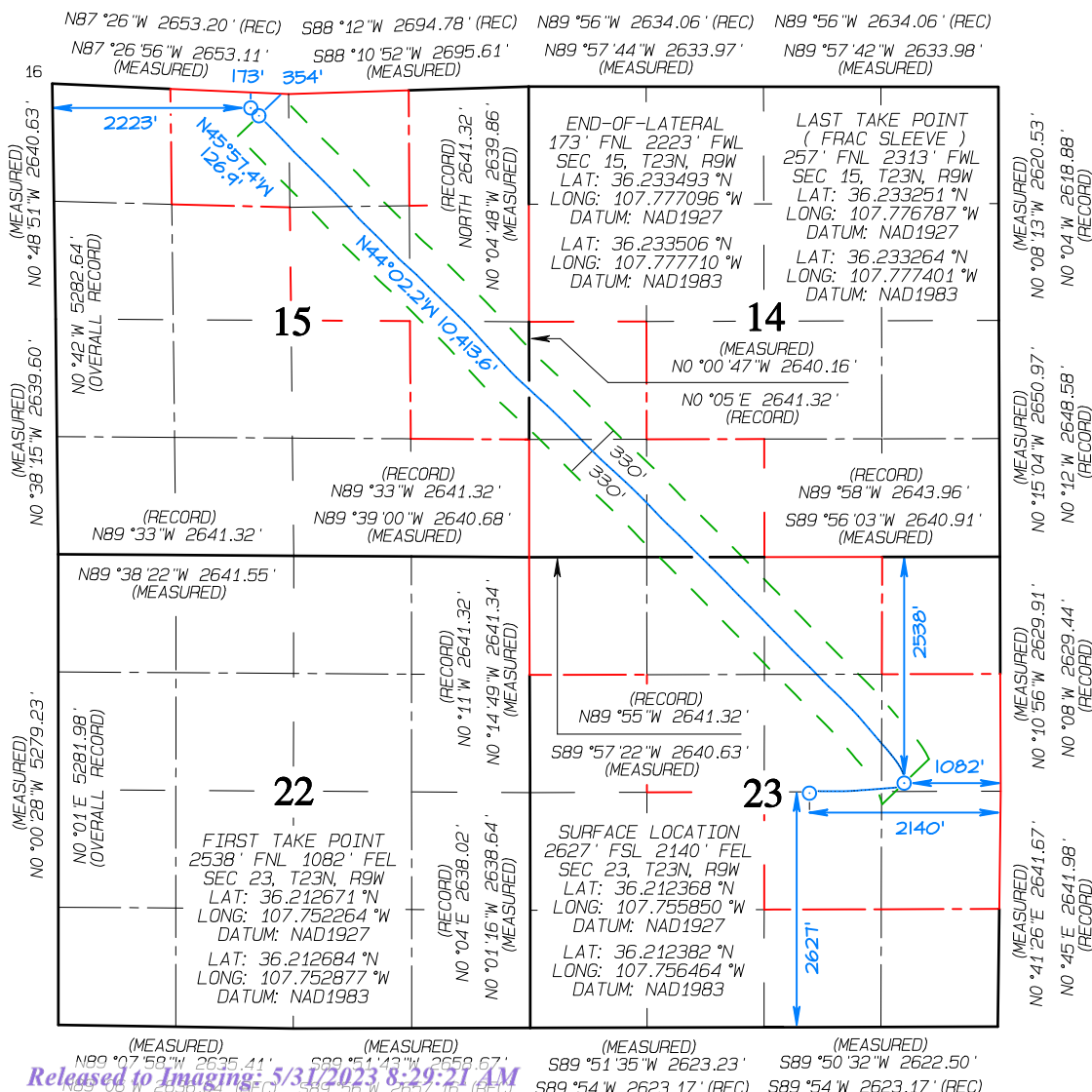
<sup>10</sup> Surface Location

UL or lot no.	Section	Township	Range	Lot Idn	Feet from the	North/South line	Feet from the	East/West line	County
J	23	23N	9W		2627	SOUTH	2140	EAST	SAN JUAN

<sup>11</sup> Bottom Hole Location If Different From Surface

UL or lot no.	Section	Township	Range	Lot Idn	Feet from the	North/South line	Feet from the	East/West line	County
C	15	23N	9W		173	NORTH	2223	WEST	SAN JUAN

<sup>12</sup> Dedicated Acres <b>640.00</b>	N/2 NW/4, SE/4 NW/4 W/2 NE/4, SE/4 NE/4 N/2 SE/4 - Sec 23 NE/4 NW/4, W/2 NE/4 SE/4 NE/4, NE/4 SE/4 - Sec 15 W/2 SW/4, SE/4 SW/4 - Sec 14	<sup>13</sup> Joint or Infill	<sup>14</sup> Consolidation Code	<sup>15</sup> Order No. <b>R-22081</b>
NO ALLOWABLE WILL BE ASSIGNED TO THIS COMPLETION UNTIL ALL INTERESTS HAVE BEEN CONSOLIDATED OR A NON-STANDARD UNIT HAS BEEN APPROVED BY THE DIVISION				



<sup>17</sup> OPERATOR CERTIFICATION  
I hereby certify that the information contained herein is true and complete to the best of my knowledge and belief, and that this organization either owns a working interest or unleased mineral interest in the land including the proposed bottom-hole location or has a right to drill this well at this location pursuant to a contract with an owner of such a mineral or working interest, or to a voluntary pooling agreement or a compulsory pooling order heretofore entered by the division.

Signature: *Heather Huntington* Date: **7/20/22**  
Printed Name: **Heather Huntington**  
E-mail Address: **hhuntington@enduringresources.com**

<sup>18</sup> SURVEYOR CERTIFICATION  
I hereby certify that the well location shown on this plat was plotted from field notes of actual surveys made by me or under my supervision, and that the same is true and correct to the best of my belief.

Date Revised: JUNE 15, 2022  
Survey Date: OCTOBER 19, 2015

Signature and Seal of Professional Surveyor



**JASON C. EDWARDS**  
Certificate Number 15269

District I  
 811 S. First Street, Artesia, NM 88210  
 Phone: (505) 393-6161 Fax: (505) 393-0720

District II  
 1000 Rio Brazos Road, Aztec, NM 87410  
 Phone: (505) 748-1283 Fax: (505) 748-9720

District III  
 1220 S. St. Francis Drive, Santa Fe, NM 87505  
 Phone: (505) 476-3460 Fax: (505) 476-3462

District IV  
 1220 S. St. Francis Drive, Santa Fe, NM 87505  
 Phone: (505) 476-3460 Fax: (505) 476-3462

Submit one copy to  
Appropriate District Office

OIL CONSERVATION DIVISION  
1220 South St. Francis Drive  
Santa Fe, NM 87505

☐ AMENDED REPORT

## AS-DRILLED WELL LOCATION AND ACREAGE DEDICATION PLAT

<sup>1</sup> API Number 30-045-38263		<sup>2</sup> Pool Code 98157	<sup>3</sup> Pool Name LYBROOK MANCOS W
<sup>4</sup> Property Code 332891	<sup>5</sup> Property Name GREATER LYBROOK UNIT		<sup>6</sup> Well Number 757H
<sup>7</sup> OGRID No. 372286	<sup>8</sup> Operator Name ENDURING RESOURCES, LLC		<sup>9</sup> Elevation 6719 '

<sup>10</sup> Surface Location

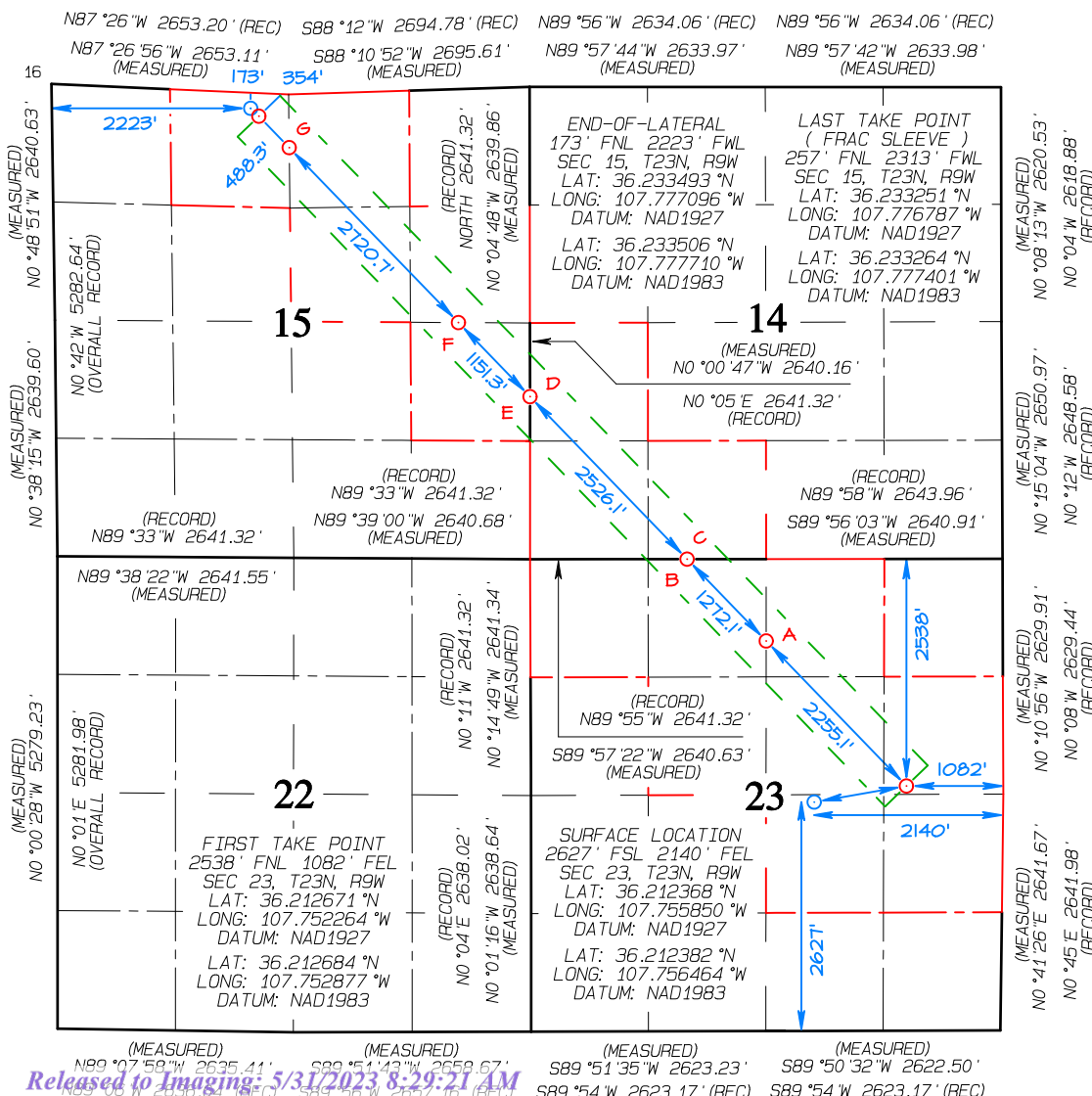
UL or lot no.	Section	Township	Range	Lot Idn	Feet from the	North/South line	Feet from the	East/West line	County
J	23	23N	9W		2627	SOUTH	2140	EAST	SAN JUAN

<sup>11</sup> Bottom Hole Location If Different From Surface

UL or lot no.	Section	Township	Range	Lot Idn	Feet from the	North/South line	Feet from the	East/West line	County
C	15	23N	9W		173	NORTH	2223	WEST	SAN JUAN

<sup>12</sup> Dedicated Acres 640.00 N/2 NW/4, SE/4 NW/4 W/2 NE/4, SE/4 NE/4 N/2 SE/4 - Sec 23 NE/4 NW/4, W/2 NE/4 SE/4 NE/4, NE/4 SE/4 - Sec 15 W/2 SW/4, SE/4 SW/4 - Sec 14	<sup>13</sup> Joint or Infill <sup>14</sup> Consolidation Code <sup>15</sup> Order No. R-22081
	NO ALLOWABLE WILL BE ASSIGNED TO THIS COMPLETION UNTIL ALL INTERESTS HAVE BEEN CONSOLIDATED OR A NON-STANDARD UNIT HAS BEEN APPROVED BY THE DIVISION

NO ALLOWABLE WILL BE ASSIGNED TO THIS COMPLETION  
UNTIL ALL INTERESTS HAVE BEEN CONSOLIDATED OR A  
NON-STANDARD UNIT HAS BEEN APPROVED BY THE DIVISION



## 17 OPERATOR CERTIFICATION

I hereby certify that the information contained herein is true and complete to the best of my knowledge and belief, and that this organization either owns a working interest or unleased mineral interest in the land including the proposed bottom-hole location or has a right to drill this well at this location pursuant to a contract with an owner of such a mineral or working interest, or to a voluntary pooling agreement or a compulsory pooling order heretofore entered by the division.

Heath H. 7/20/22

Signature	Date
-----------	------

Heather Huntington

Printed Name

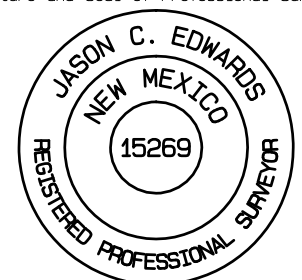
#### hhuntingtonre E-mail Address

## 18 SURVEYOR CERTIFICATION

I hereby certify that the well location shown on this plat was plotted from field notes of actual surveys made by me or under my supervision, and that the same is true and correct to the best of my belief.

Date Revised: JUNE 15, 2022  
Survey Date: OCTOBER 19, 2015

Signature and Seal of Professional Surveyor



JASON C. EDWARDS

Certificate Number	15269
--------------------	-------

(A) 915' FNL 2636' FWL  
SEC 23, T23N, R9W  
LAT: 36.217128 °N  
LONG: 107.757573 °W  
DATUM: NAD1927

LAT: 36.217141 °N  
LONG: 107.758187 °W  
DATUM: NAD1983

(B) 0' FNL 1756' FWL  
SEC 23, T23N, R9W  
LAT: 36.219642 °N  
LONG: 107.760568 °W  
DATUM: NAD1927

LAT: 36.219655 °N  
LONG: 107.761182 °W  
DATUM: NAD1983

(C) 0' FSL 1756' FWL  
SEC 14, T23N, R9W  
LAT: 36.219642 °N  
LONG: 107.760568 °W  
DATUM: NAD1927

LAT: 36.219655 °N  
LONG: 107.761182 °W  
DATUM: NAD1983

(D) 1817' FSL 0' FWL  
SEC 14, T23N, R9W  
LAT: 36.224634 °N  
LONG: 107.766517 °W  
DATUM: NAD1927

LAT: 36.224647 °N  
LONG: 107.767131 °W  
DATUM: NAD1983

(E) 1817' FSL 0' FEL  
SEC 15, T23N, R9W  
LAT: 36.224634 °N  
LONG: 107.766517 °W  
DATUM: NAD1927

LAT: 36.224647 °N  
LONG: 107.767131 °W  
DATUM: NAD1983

(F) 2640' FSL 800' FEL  
SEC 15 T23N, R9W  
LAT: 36.226910 °N  
LONG: 107.769228 °W  
DATUM: NAD1927

LAT: 36.226922 °N  
LONG: 107.769842 °W  
DATUM: NAD1983

(G) 594' FNL 2647' FWL  
SEC 15, T23N, R9W  
LAT: 36.232286 °N  
LONG: 107.775636 °W  
DATUM: NAD1927

LAT: 36.232299 °N  
LONG: 107.776251 °W  
DATUM: NAD1983

District I  
Phone: (575) 393-6161 Fax: (575) 393-0720  
District II  
811 S. First Street, Artesia, NM 88210  
Phone: (575) 748-1283 Fax: (575) 748-9720  
District III  
1000 Rio Brazos Road, Aztec, NM 87410  
Phone: (505) 334-6178 Fax: (505) 334-6170  
District IV  
1220 S. St. Francis Drive, Santa Fe, NM 87505  
Phone: (505) 476-3460 Fax: (505) 476-3462

Submit one copy to  
Appropriate District Office

**OIL CONSERVATION DIVISION**  
**1220 South St. Francis Drive**  
**Santa Fe, NM 87505**

☐ AMENDED REPORT

**AS-DRILLED WELL LOCATION AND ACREAGE DEDICATION PLAT**

<sup>1</sup> API Number <b>30-045-38264</b>	<sup>2</sup> Pool Code <b>98157</b>	<sup>3</sup> Pool Name <b>LYBROOK MANCOS W</b>
<sup>4</sup> Property Code <b>332891</b>	<sup>5</sup> Property Name <b>GREATER LYBROOK UNIT</b>	<sup>6</sup> Well Number <b>758H</b>
<sup>7</sup> GRID No. <b>372286</b>	<sup>8</sup> Operator Name <b>ENDURING RESOURCES, LLC</b>	<sup>9</sup> Elevation <b>6719'</b>

<sup>10</sup> Surface Location

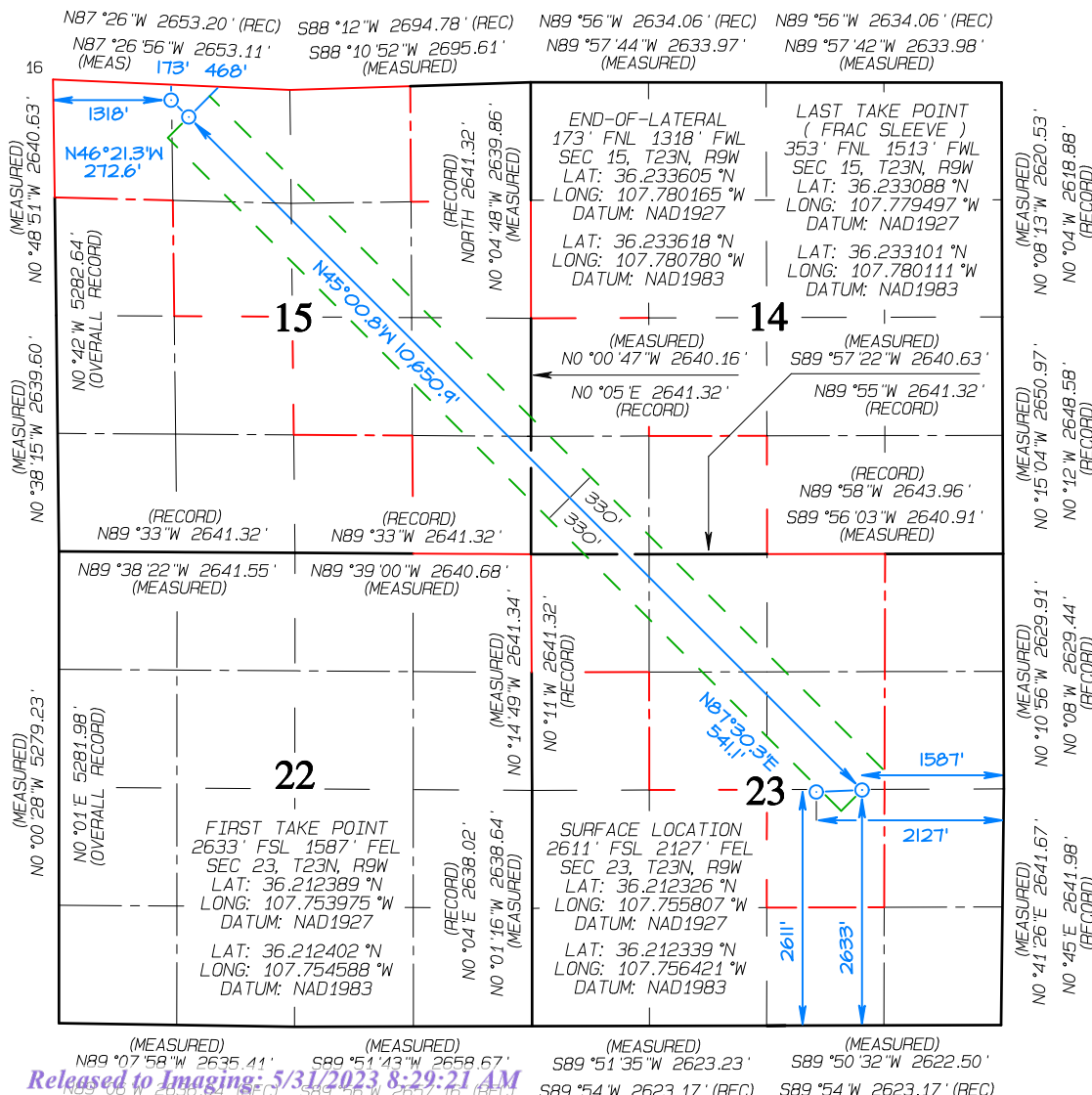
UL or lot no.	Section	Township	Range	Lot Idn	Feet from the	North/South line	Feet from the	East/West line	County
J	23	23N	9W		2611	SOUTH	2127	EAST	SAN JUAN

<sup>11</sup> Bottom Hole Location If Different From Surface

UL or lot no.	Section	Township	Range	Lot Idn	Feet from the	North/South line	Feet from the	East/West line	County
D	15	23N	9W		173	NORTH	1318	WEST	SAN JUAN

<sup>12</sup> Dedicated Acres <b>720.00</b>	<b>NW/4 NW/4, E/2 NW/4 W/2 NE/4, SE/4 NE/4 N/2 SE/4, SE/4 SE/4 - Section 15 NW/4 SW/4, S/2 SW/4 - Section 14 N/2 NW/4, SE/4 NW/4 W/2 NE/4, NW/4 SE/4 - Section 23</b>	<sup>13</sup> Joint or Infill	<sup>14</sup> Consolidation Code	<sup>15</sup> Order No. <b>R-22081</b>
--	---	-------------------------------	----------------------------------	---

NO ALLOWABLE WILL BE ASSIGNED TO THIS COMPLETION  
UNTIL ALL INTERESTS HAVE BEEN CONSOLIDATED OR A  
NON-STANDARD UNIT HAS BEEN APPROVED BY THE DIVISION



**17 OPERATOR CERTIFICATION**

I hereby certify that the information contained herein is true and complete to the best of my knowledge and belief, and that this organization either owns a working interest or unleased mineral interest in the land including the proposed bottom-hole location or has a right to drill this well at this location pursuant to a contract with an owner of such a mineral or working interest, or to a voluntary pooling agreement or a compulsory pooling order heretofore entered by the division.

Signature Heather Huntington Date 7/20/22  
Printed Name  
hhuntington@enduringresources.com  
E-mail Address

**18 SURVEYOR CERTIFICATION**

I hereby certify that the well location shown on this plat was plotted from field notes of actual surveys made by me or under my supervision, and that the same is true and correct to the best of my belief.

Date Revised: JUNE 15, 2022  
Survey Date: OCTOBER 19, 2015

Signature and Seal of Professional Surveyor



**JASON C. EDWARDS**  
Certificate Number 15269



District I  
Phone: (575) 393-6161 Fax: (575) 393-0720  
District II  
811 S. First Street, Artesia, NM 88210  
Phone: (575) 748-1283 Fax: (575) 748-9720  
District III  
1000 Rio Brazos Road, Aztec, NM 87410  
Phone: (505) 334-6178 Fax: (505) 334-6170  
District IV  
1220 S. St. Francis Drive, Santa Fe, NM 87505  
Phone: (505) 476-3460 Fax: (505) 476-3462

Submit one copy to  
Appropriate District Office

**OIL CONSERVATION DIVISION**  
**1220 South St. Francis Drive**  
**Santa Fe, NM 87505**

☐ AMENDED REPORT

**AS-DRILLED WELL LOCATION AND ACREAGE DEDICATION PLAT**

<sup>1</sup> API Number <b>30-045-38264</b>	<sup>2</sup> Pool Code <b>98157</b>	<sup>3</sup> Pool Name <b>LYBROOK MANCOS W</b>
<sup>4</sup> Property Code <b>332891</b>	<sup>5</sup> Property Name <b>GREATER LYBROOK UNIT</b>	<sup>6</sup> Well Number <b>758H</b>
<sup>7</sup> GRID No. <b>372286</b>	<sup>8</sup> Operator Name <b>ENDURING RESOURCES, LLC</b>	<sup>9</sup> Elevation <b>6719'</b>

<sup>10</sup> Surface Location

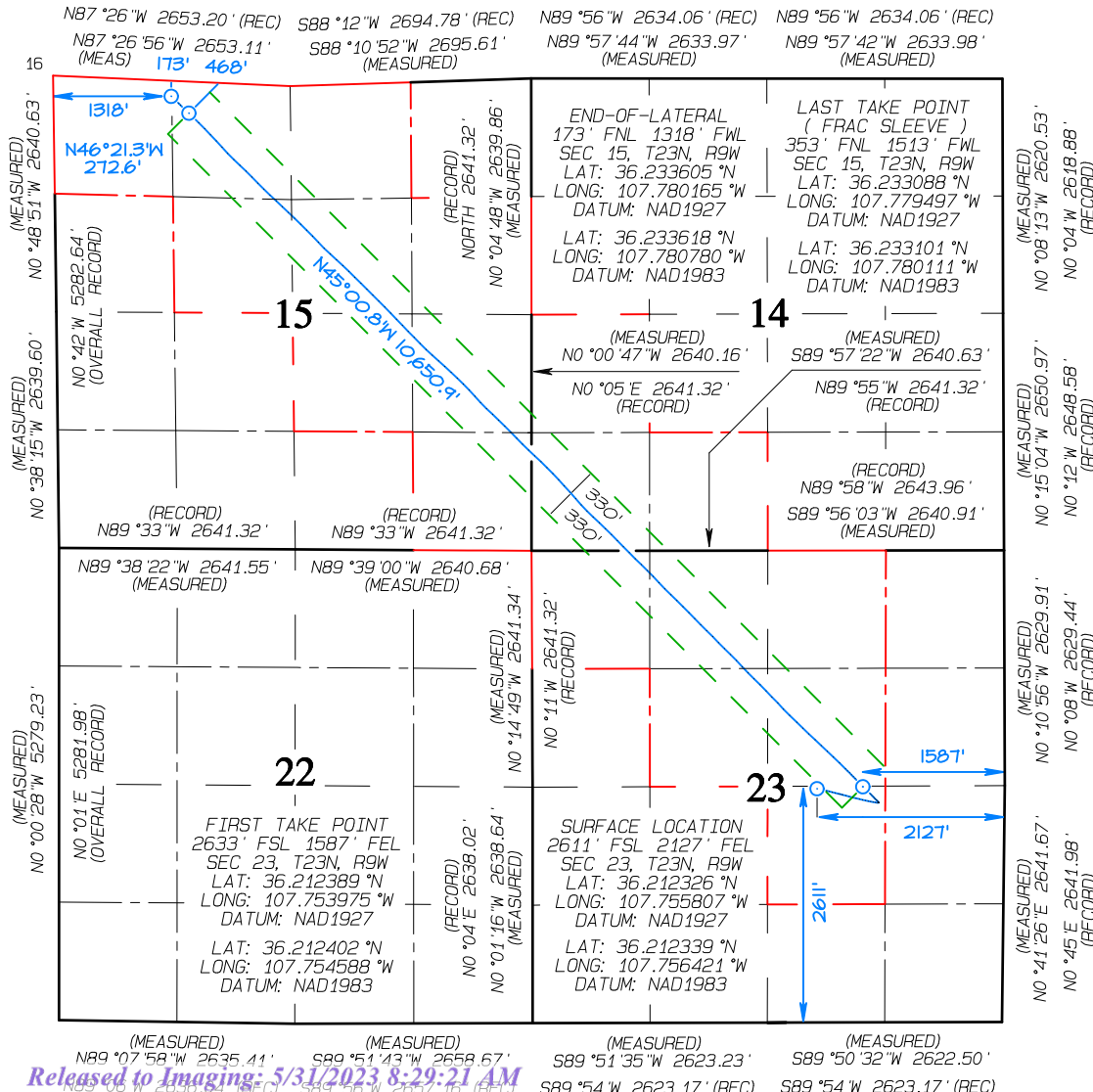
UL or lot no.	Section	Township	Range	Lot Idn	Feet from the	North/South line	Feet from the	East/West line	County
J	23	23N	9W		2611	SOUTH	2127	EAST	SAN JUAN

<sup>11</sup> Bottom Hole Location If Different From Surface

UL or lot no.	Section	Township	Range	Lot Idn	Feet from the	North/South line	Feet from the	East/West line	County
D	15	23N	9W		173	NORTH	1318	WEST	SAN JUAN

<sup>12</sup> Dedicated Acres <b>720.00</b>	<b>NW/4 NW/4, E/2 NW/4 W/2 NE/4, SE/4 NE/4 N/2 SE/4, SE/4 SE/4 - Section 15 NW/4 SW/4, S/2 SW/4 - Section 14 N/2 NW/4, SE/4 NW/4 W/2 NE/4, NW/4 SE/4 - Section 23</b>	<sup>13</sup> Joint or Infill	<sup>14</sup> Consolidation Code	<sup>15</sup> Order No. <b>R-22081</b>
--	---	-------------------------------	----------------------------------	---

NO ALLOWABLE WILL BE ASSIGNED TO THIS COMPLETION  
UNTIL ALL INTERESTS HAVE BEEN CONSOLIDATED OR A  
NON-STANDARD UNIT HAS BEEN APPROVED BY THE DIVISION



**17 OPERATOR CERTIFICATION**

I hereby certify that the information contained herein is true and complete to the best of my knowledge and belief, and that this organization either owns a working interest or unleased mineral interest in the land including the proposed bottom-hole location or has a right to drill this well at this location pursuant to a contract with an owner of such a mineral or working interest, or to a voluntary pooling agreement or a compulsory pooling order heretofore entered by the division.

Signature: Heather Huntington Date: 7/20/22

Printed Name: Heather Huntington

E-mail Address: hhuntington@enduringresources.com

**18 SURVEYOR CERTIFICATION**

I hereby certify that the well location shown on this plat was plotted from field notes of actual surveys made by me or under my supervision, and that the same is true and correct to the best of my belief.

Date Revised: JUNE 15, 2022  
Survey Date: OCTOBER 19, 2015

Signature and Seal of Professional Surveyor



**JASON C. EDWARDS**  
Certificate Number 15269



District I  
Phone: (575) 393-6161 Fax: (575) 393-0720  
District II  
811 S. First Street, Artesia, NM 88210  
Phone: (575) 748-1283 Fax: (575) 748-9720  
District III  
1000 Rio Brazos Road, Aztec, NM 87410  
Phone: (505) 334-6178 Fax: (505) 334-6170  
District IV  
1220 S. St. Francis Drive, Santa Fe, NM 87505  
Phone: (505) 476-3460 Fax: (505) 476-3462

Submit one copy to  
Appropriate District Office

**OIL CONSERVATION DIVISION**  
**1220 South St. Francis Drive**  
**Santa Fe, NM 87505**

☐ AMENDED REPORT

**AS-DRILLED WELL LOCATION AND ACREAGE DEDICATION PLAT**

<sup>1</sup> API Number <b>30-045-38264</b>	<sup>2</sup> Pool Code <b>98157</b>	<sup>3</sup> Pool Name <b>LYBROOK MANCOS W</b>
<sup>4</sup> Property Code <b>332891</b>	<sup>5</sup> Property Name <b>GREATER LYBROOK UNIT</b>	<sup>6</sup> Well Number <b>758H</b>
<sup>7</sup> GRID No. <b>372286</b>	<sup>8</sup> Operator Name <b>ENDURING RESOURCES, LLC</b>	<sup>9</sup> Elevation <b>6719'</b>

<sup>10</sup> Surface Location

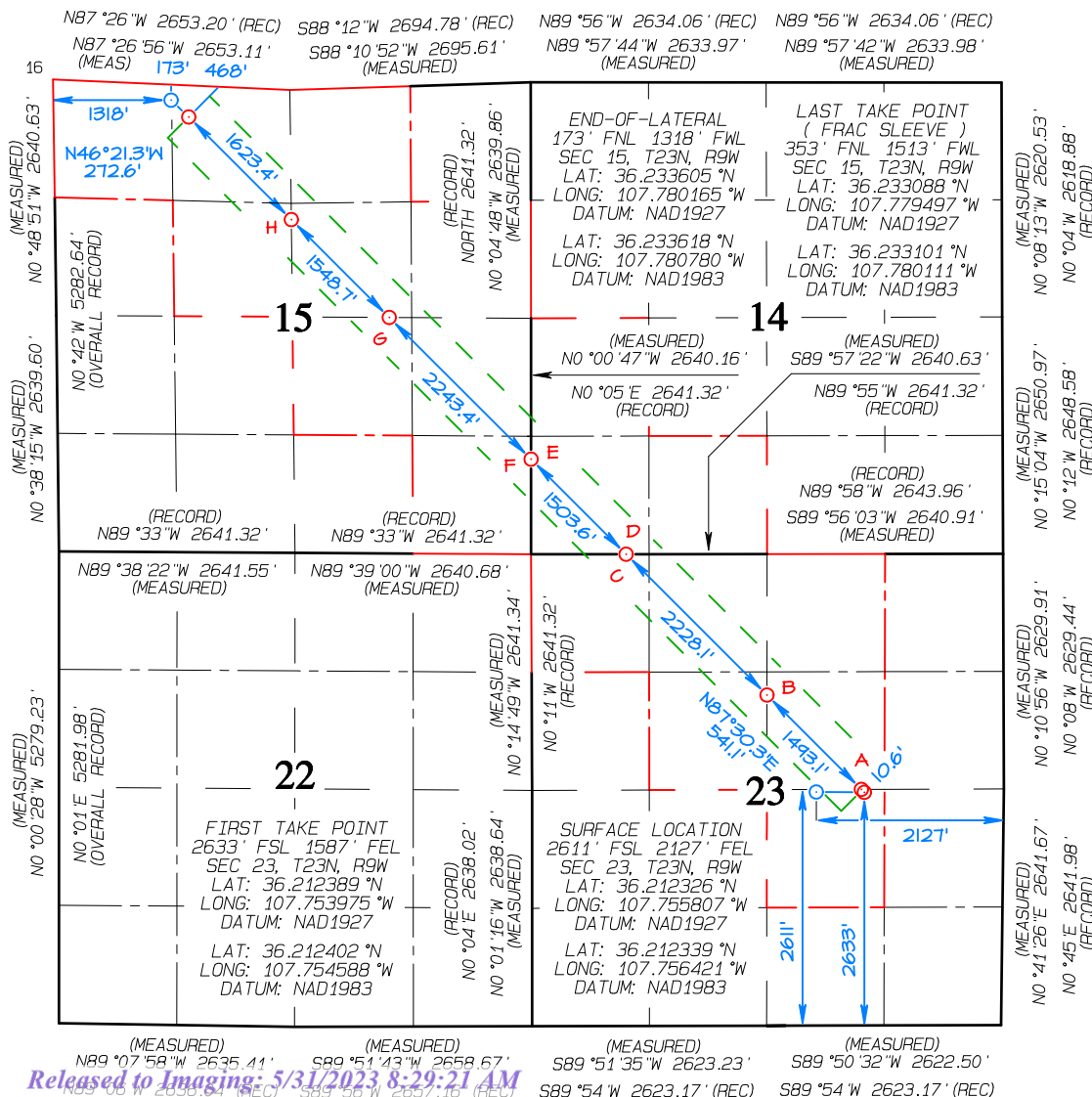
UL or lot no.	Section	Township	Range	Lot Idn	Feet from the	North/South line	Feet from the	East/West line	County
J	23	23N	9W		2611	SOUTH	2127	EAST	SAN JUAN

<sup>11</sup> Bottom Hole Location If Different From Surface

UL or lot no.	Section	Township	Range	Lot Idn	Feet from the	North/South line	Feet from the	East/West line	County
D	15	23N	9W		173	NORTH	1318	WEST	SAN JUAN

<sup>12</sup> Dedicated Acres <b>720.00</b> NW/4 NW/4, E/2 NW/4 W/2 NE/4, SE/4 NE/4 N/2 SE/4, SE/4 SE/4 - Section 15 NW/4 SW/4, S/2 SW/4 - Section 14 N/2 NW/4, SE/4 NW/4 W/2 NE/4, NW/4 SE/4 - Section 23	<sup>13</sup> Joint or Infill	<sup>14</sup> Consolidation Code	<sup>15</sup> Order No. <b>R-22081</b>
---	-------------------------------	----------------------------------	---

NO ALLOWABLE WILL BE ASSIGNED TO THIS COMPLETION  
UNTIL ALL INTERESTS HAVE BEEN CONSOLIDATED OR A  
NON-STANDARD UNIT HAS BEEN APPROVED BY THE DIVISION



**17 OPERATOR CERTIFICATION**

I hereby certify that the information contained herein is true and complete to the best of my knowledge and belief, and that this organization either owns a working interest or unleased mineral interest in the land including the proposed bottom-hole location or has a right to drill this well at this location pursuant to a contract with an owner of such a mineral or working interest, or to a voluntary pooling agreement or a compulsory pooling order heretofore entered by the division.

Signature Heather Huntington Date 7/20/22  
Printed Name Heather Huntington  
E-mail Address hhuntington@enduringresources.com

**18 SURVEYOR CERTIFICATION**

I hereby certify that the well location shown on this plat was plotted from field notes of actual surveys made by me or under my supervision, and that the same is true and correct to the best of my belief.

Date Revised: JUNE 15, 2022  
Survey Date: OCTOBER 19, 2015

Signature and Seal of Professional Surveyor



**JASON C. EDWARDS**  
Certificate Number 15269

(A) 2641' FSL 1595' FEL  
SEC 23, T23N, R9W  
LAT: 36.212410 °N  
LONG: 107.754000 °W  
DATUM: NAD1927

LAT: 36.212423 °N  
LONG: 107.754614 °W  
DATUM: NAD1983

(B) 1576' FNL 2632' FWL  
SEC 23, T23N, R9W  
LAT: 36.215312 °N  
LONG: 107.757577 °W  
DATUM: NAD1927

LAT: 36.215325 °N  
LONG: 107.758191 °W  
DATUM: NAD1983

(C) 0' FNL 1063' FWL  
SEC 23, T23N, R9W  
LAT: 36.219642 °N  
LONG: 107.762915 °W  
DATUM: NAD1927

LAT: 36.219655 °N  
LONG: 107.763529 °W  
DATUM: NAD1983

(D) 0' FSL 1063' FWL  
SEC 14, T23N, R9W  
LAT: 36.219642 °N  
LONG: 107.762915 °W  
DATUM: NAD1927

LAT: 36.219655 °N  
LONG: 107.763529 °W  
DATUM: NAD1983

(E) 1064' FSL 0' FWL  
SEC 14, T23N, R9W  
LAT: 36.222564 °N  
LONG: 107.766518 °W  
DATUM: NAD1927

LAT: 36.222577 °N  
LONG: 107.767132 °W  
DATUM: NAD1983

(F) 1064' FSL 0' FEL  
SEC 15, T23N, R9W  
LAT: 36.222564 °N  
LONG: 107.766518 °W  
DATUM: NAD1927

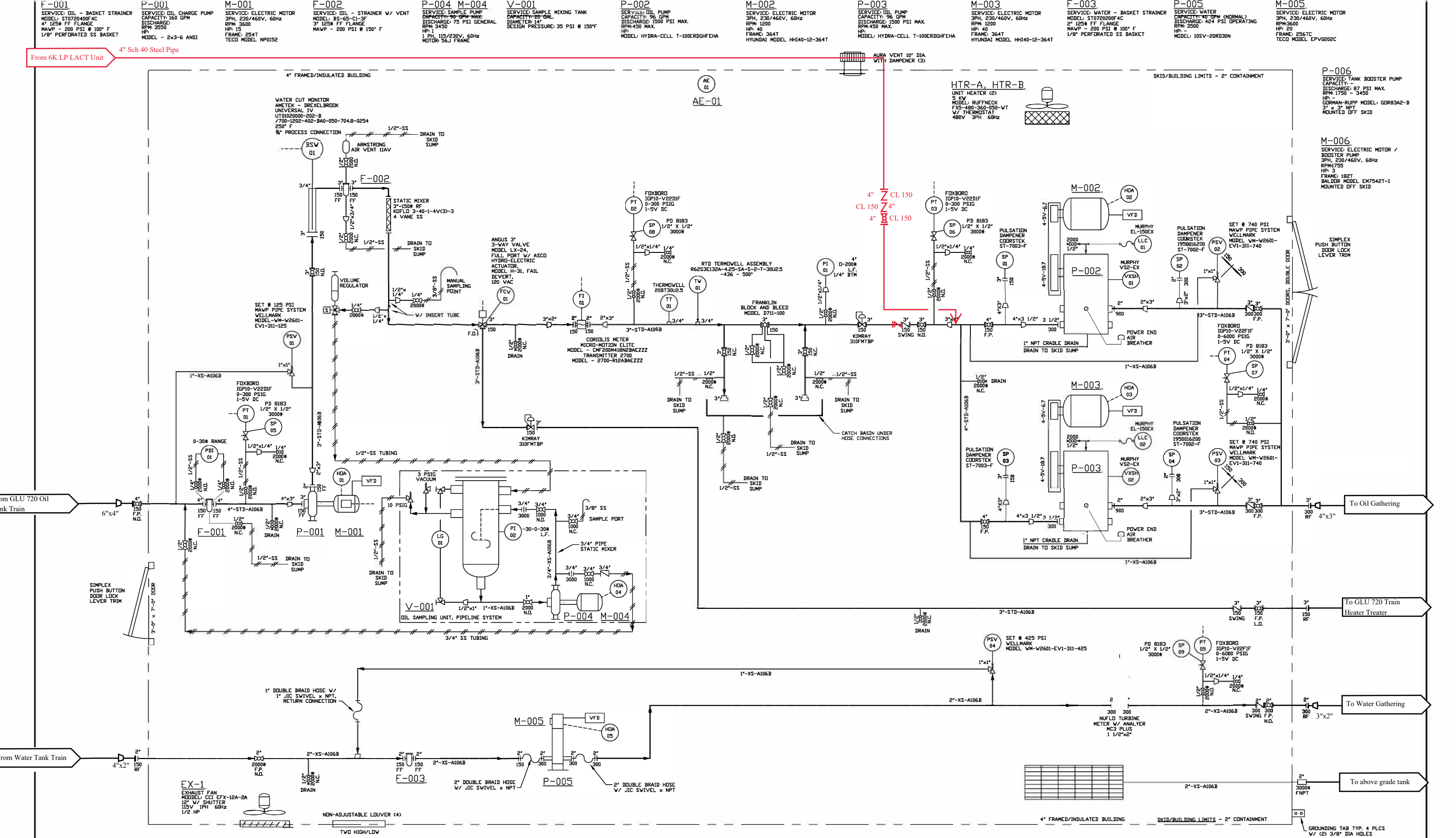
LAT: 36.222577 °N  
LONG: 107.767132 °W  
DATUM: NAD1983

(G) 2640' FSL 1586' FEL  
SEC 15, T23N, R9W  
LAT: 36.226924 °N  
LONG: 107.771894 °W  
DATUM: NAD1927

LAT: 36.226937 °N  
LONG: 107.772508 °W  
DATUM: NAD1983

(H) 1450' FNL 2644' FWL  
SEC 15, T23N, R9W  
LAT: 36.229934 °N  
LONG: 107.775606 °W  
DATUM: NAD1927

LAT: 36.229946 °N  
LONG: 107.776220 °W  
DATUM: NAD1983



NOTES:  
1. DESIGN FLOW RATE OIL - 6000 BBL/DAY.  
2. DESIGN FLOW RATE WATER - 40 GPM AT 424 PSI.  
3. ALL PIPING SECTIONS TO BE HYDROTESTED.  
4. 10% OF A ALL PIPING WELDS TO BE X-RAY PER B31.3.

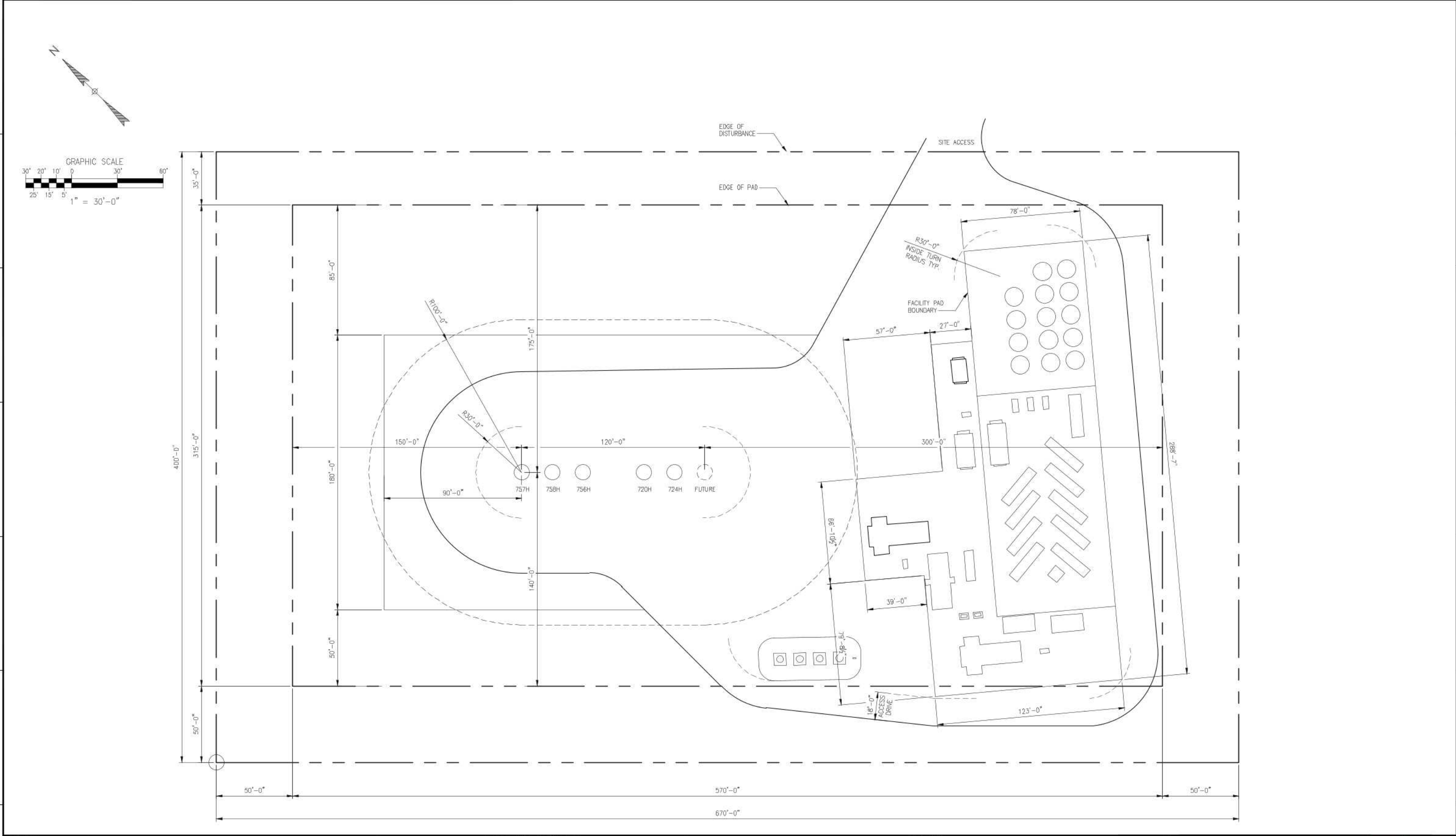
4	CHANGE EXHAUST FAN	JKR	Drawn By:	JKR
3	AS-BUILT	JKR	Date:	Dec 2016
2	TUBING IDENTIFICATIONS	JKR	Checked By:	
1	UPDATE OF MODEL NUMBERS	JKR	Date:	
0	ISSUE FOR CONSTRUCTION	JKR	Approved:	
D	REMOVE TRUCK LOAD LINE	JKR	Date:	
C	ADD TRUCK LOAD LINE, MODEL NLS	JKR		
REV.	DESCRIPTION	BY	CHKD.	





3440 Morning Star Drive, Farmington, NM 87401 (505) 327-0422

Drawing Name:	P & ID	6000 BPD
Project:	ENDURING TRANSFER LACT UNIT	
Scale:	NTS	
Drawing No.:	2453-01	
Rev.	4	

FILE PATH: P:\ENDURING RESOURCES\21129-01\_PAO\_LAYOUTS\3-0\_DESIGN\3-1\_CIVIL\21129-01-31150\_MUJ\_720H.DWG BY:DAVISRRIDGE DATE:Apr 06, 2023 3:22pm



NOTES:	REFERENCE DRAWINGS		REVISIONS							<div><div>HALKER</div><div>ENGINEERED SOLUTIONS</div></div> <div></div>	
			▲								
			▲								
			▲								
			▲								
			▲								
			▲								
		▲	ISSUED FOR INFORMATION	04/06/23	DTS	BBS	-	BBS	ENDURING RESOURCES W LYBROOK UNIT 720H FACILITY LAYOUT		
DWG NO.	TITLE	REV	DESCRIPTION	DATE	BY	CHK	ENG	APR			
									SCALE: (FORMATTED 22X34) 1" = 30'-0"	DRAWING NO. 21129-01-31150	



**From:** [Mark Lokshin](#)  
**To:** [Heather Huntington](#)  
**Subject:** FW: Permission from Whiptail needed on LACT changes for Greater Lybrook 720H pad  
**Date:** Wednesday, May 24, 2023 2:14:28 PM

Heather

Please see below.

Thanks

Mark

---

**From:** Andy Pickle <andy.pickle@whiptailmidstream.com>  
**Sent:** Wednesday, May 24, 2023 2:02 PM  
**To:** Mark Lokshin <MLokshin@enduringresources.com>  
**Subject:** RE: Permission from Whiptail needed on LACT changes for Greater Lybrook 720H pad

Mark,

We approve the use of the Pipeline Transfer LACT Equipment on the Greater Lybrook Unit 720H Pad to transfer product, from the wells listed below, to Whiptail Midstream, LLC's pipeline system.

#### EXISTING LACT UNIT

##### GREATER LYBROOK UNIT 720H/724H/756H/757H/758H PIPELINE LACT UNIT:

WELLS TO BE SERVED BY PIPELINE LACT UNIT:

- |   |                                 |                               |
|---|---------------------------------|-------------------------------|
| • GREATER LYBROOK UNIT 720H/ API # 30-045- <del>35818</del> | UNIT J Sec. 23, T23N, R9W, NMPM | CORRECTED API<br>30-045-38260 |
| • GREATER LYBROOK UNIT 724H/ API # 30-045- <del>35811</del> | UNIT J Sec. 23, T23N, R9W, NMPM | 30-045-38261                  |
| • GREATER LYBROOK UNIT 756H/ API # 30-045- <del>35819</del> | UNIT J Sec. 23, T23N, R9W, NMPM | 30-045-38262                  |
| • GREATER LYBROOK UNIT 757H/ API # 30-045- <del>35807</del> | UNIT J Sec. 23, T23N, R9W, NMPM | 30-045-38263                  |
| • GREATER LYBROOK UNIT 758H/ API # 30-045- <del>35810</del> | UNIT J Sec. 23, T23N, R9W, NMPM | 30-045-38264                  |

#### NEW LACT UNIT

##### W LYBROOK UNIT 768H/769H/770H/771H PIPELINE LACT UNIT:

WELLS TO BE SERVED BY PIPELINE LACT UNIT:

- W LYBROOK UNIT 768H/ API # 30-045-35891/ UNIT H Sec. 23, T23N, R9W, NMPM
- W LYBROOK UNIT 769H/ API # 30-045-35892/ UNIT H Sec. 23, T23N, R9W, NMPM
- W LYBROOK UNIT 770H / API # 30-045-35893 / UNIT H Sec. 23, T23N, R9W, NMPM
- W LYBROOK UNIT 771H/ API # 30-045-35894/ UNIT H Sec. 23, T23N, R9W, NMPM

Thank you,

[Andy Pickle](#)

**Whiptail Midstream**

O: (918) 289-2209

M: (580) 402-4881

[andy.pickle@whiptailmidstream.com](mailto:andy.pickle@whiptailmidstream.com)



*[From receipt to delivery, the midstream partner you count on.](#)*

---

**From:** Mark Lokshin <[MLokshin@enduringresources.com](mailto:MLokshin@enduringresources.com)>

**Sent:** Wednesday, May 24, 2023 2:38 PM

**To:** Andy Pickle <[andy.pickle@whiptailmidstream.com](mailto:andy.pickle@whiptailmidstream.com)>

**Subject:** FW: Permission from Whiptail needed on LACT changes for Greater Lybrook 720H pad

Andy

Please see below, and reply with approval.

Thanks

Mark

---

**From:** Heather Huntington <[hhuntington@enduringresources.com](mailto:hhuntington@enduringresources.com)>

**Sent:** Wednesday, May 24, 2023 1:10 PM

**To:** Mark Lokshin <[MLokshin@enduringresources.com](mailto:MLokshin@enduringresources.com)>

**Subject:** Permission from Whiptail needed on LACT changes for Greater Lybrook 720H pad

Good Afternoon Mark,

Would you please reach out to Whiptail for approval on the LACT revisions we are doing on the Greater Lybrook Unit 720H pad? Description is below:

Enduring Resources IV, LLC's (Enduring) is currently approved through NMOCD for the transfer of the following wells through the Greater Lybrook 720H Pad Pipeline Transfer LACT Unit C-106 LACT application.

- W LYBROOK UNIT 768H/ API # 30-045-35891/ UNIT H Sec. 23, T23N, R9W, NMPM
- W LYBROOK UNIT 769H/ API # 30-045-35892/ UNIT H Sec. 23, T23N, R9W, NMPM
- W LYBROOK UNIT 770H / API # 30-045-35893 / UNIT H Sec. 23, T23N, R9W, NMPM
- W LYBROOK UNIT 771H/ API # 30-045-35894/ UNIT H Sec. 23, T23N, R9W, NMPM
- GREATER LYBROOK UNIT 720H/ API # 30-045-35818/ UNIT J Sec. 23, T23N, R9W, NMPM
- GREATER LYBROOK UNIT 724H/ API # 30-045-35811/ UNIT J Sec. 23, T23N, R9W, NMPM
- GREATER LYBROOK UNIT 756H/ API # 30-045-35819/ UNIT J Sec. 23, T23N, R9W, NMPM
- GREATER LYBROOK UNIT 757H/ API # 30-045-35807/ UNIT J Sec. 23, T23N, R9W, NMPM
- GREATER LYBROOK UNIT 758H/ API # 30-045-35810/ UNIT J Sec. 23, T23N, R9W, NMPM

Enduring Resources will be adding an additional LACT unit to the Greater Lybrook 720H Pad. The creation of the Greater Lybrook Unit caused the two different lease numbers to be associated with this pad and each LACT will support one lease. The Pipeline Transfer LACT Unit and this change requires the approval from the transporter, which in this case is Whiptail. Custody transfer will occur at two locations: the 2-9 Central Delivery Point or the Trunk 1 Transfer. A Coriolis meter is installed at each custody transfer point that routes oil to Whiptail's pipeline. The Pipeline Transfer LACT

equipment for both LACT units will be located on Enduring's Greater Lybrook Unit 720H pad and will be utilized for sales oil royalty distribution. The existing LACT will serve the Greater Lybrook Unit wells and the new LACT will serve the W Lybrook Unit wells. The LACT units will be proved per regulatory requirements.

#### EXISTING LACT UNIT

##### GREATER LYBROOK UNIT 720H/724H/756H/757H/758H PIPELINE LACT UNIT:

WELLS TO BE SERVED BY PIPELINE LACT UNIT:

- GREATER LYBROOK UNIT 720H/ API # ~~30-045-35818~~ / UNIT J Sec. 23, T23N, R9W, NMPM CORRECTED API 30-045-38260
- GREATER LYBROOK UNIT 724H/ API # ~~30-045-35811~~ / UNIT J Sec. 23, T23N, R9W, NMPM 30-045-38261
- GREATER LYBROOK UNIT 756H/ API # ~~30-045-35819~~ / UNIT J Sec. 23, T23N, R9W, NMPM 30-045-38262
- GREATER LYBROOK UNIT 757H/ API # ~~30-045-35807~~ / UNIT J Sec. 23, T23N, R9W, NMPM 30-045-38263
- GREATER LYBROOK UNIT 758H/ API # 30-045-35810/ UNIT J Sec. 23, T23N, R9W, NMPM 30-045-38264

#### NEW LACT UNIT

##### W LYBROOK UNIT 768H/769H/770H/771H PIPELINE LACT UNIT:

WELLS TO BE SERVED BY PIPELINE LACT UNIT:

- W LYBROOK UNIT 768H/ API # 30-045-35891/ UNIT H Sec. 23, T23N, R9W, NMPM
- W LYBROOK UNIT 769H/ API # 30-045-35892/ UNIT H Sec. 23, T23N, R9W, NMPM
- W LYBROOK UNIT 770H / API # 30-045-35893 / UNIT H Sec. 23, T23N, R9W, NMPM
- W LYBROOK UNIT 771H/ API # 30-045-35894/ UNIT H Sec. 23, T23N, R9W, NMPM

Heather Huntington  
Enduring Resources Permitting Technician  
505-636-9751

**District I**  
1625 N. French Dr., Hobbs, NM 88240  
Phone:(575) 393-6161 Fax:(575) 393-0720

**District II**  
811 S. First St., Artesia, NM 88210  
Phone:(575) 748-1283 Fax:(575) 748-9720

**District III**  
1000 Rio Brazos Rd., Aztec, NM 87410  
Phone:(505) 334-6178 Fax:(505) 334-6170

**District IV**  
1220 S. St Francis Dr., Santa Fe, NM 87505  
Phone:(505) 476-3470 Fax:(505) 476-3462

**State of New Mexico**  
**Energy, Minerals and Natural Resources**  
**Oil Conservation Division**  
**1220 S. St Francis Dr.**  
**Santa Fe, NM 87505**

CONDITIONS

Action 220302

CONDITIONS

Operator: ENDURING RESOURCES, LLC 6300 S Syracuse Way, Suite 525 Centennial, CO 80111	OGRID: 372286
	Action Number: 220302
	Action Type: [C-106] NOI Utilize ACTE (C-106)

CONDITIONS

Created By	Condition	Condition Date
dmcclure	Operation of the equipment shall be performed in compliance with 19.15.18.15 NMAC.	5/31/2023