

Office

Energy, Minerals and Natural Resources

Revised July 18, 2013

District I - (575) 393-6161
 1625 N. French Dr., Hobbs, NM 88240
 District II - (575) 748-1283
 811 S. First St., Artesia, NM 88210
 District III - (505) 334-6178
 1000 Rio Brazos Rd., Aztec, NM 87410
 District IV - (505) 476-3460
 1220 S. St. Francis Dr., Santa Fe, NM
 87505

OIL CONSERVATION DIVISION
 1220 South St. Francis Dr.
 Santa Fe, NM 87505

WELL API NO.	30-015-02211
5. Indicate Type of Lease STATE <input checked="" type="checkbox"/> FEE <input type="checkbox"/>	
6. State Oil & Gas Lease No. 648	
7. Lease Name or Unit Agreement Name State BN	
8. Well Number 2	
9. OGRID Number 019958	
10. Pool name or Wildcat Millman-Yates-SR-QN-GB-SA, East	

SUNDRY NOTICES AND REPORTS ON WELLS
 (DO NOT USE THIS FORM FOR PROPOSALS TO DRILL OR TO DEEPEN OR PLUG BACK TO A
 DIFFERENT RESERVOIR. USE "APPLICATION FOR PERMIT" (FORM C-101) FOR SUCH
 PROPOSALS.)

1. Type of Well: Oil Well ☐ Gas Well ☐ Other ☐ Water Injection

2. Name of Operator
 Stephens & Johnson Operating Co.

3. Address of Operator
 P O Box 2249, Wichita Falls, TX 76307-2249

4. Well Location
 Unit Letter O : 660 feet from the South line and 1980 feet from the East line
 Section 11 Township 19S Range 28E NMPM County Eddy

11. Elevation (Show whether DR, RKB, RT, GR, etc.)
 3437' KB

12. Check Appropriate Box to Indicate Nature of Notice, Report or Other Data

NOTICE OF INTENTION TO:

PERFORM REMEDIAL WORK ☐ PLUG AND ABANDON ☐
 TEMPORARILY ABANDON ☐ CHANGE PLANS ☐
 PULL OR ALTER CASING ☐ MULTIPLE COMPL ☐
 DOWNHOLE COMMINGLE ☐
 CLOSED-LOOP SYSTEM ☐
 OTHER: ☐

SUBSEQUENT REPORT OF:

REMEDIAL WORK ☒ ALTERING CASING ☐
 COMMENCE DRILLING OPNS. ☐ P AND A ☐
 CASING/CEMENT JOB ☐
 OTHER: ☐

13. Describe proposed or completed operations. (Clearly state all pertinent details, and give pertinent dates, including estimated date of starting any proposed work). SEE RULE 19.15.7.14 NMAC. For Multiple Completions: Attach wellbore diagram of proposed completion or recompletion.

See Attachment

Spud Date:

Rig Release Date:

I hereby certify that the information above is true and complete to the best of my knowledge and belief.

SIGNATURE William M. Kincaid TITLE Petroleum Engineer DATE 6-8-2023

Type or print name William M. Kincaid E-mail address: mkincaid@sjoc.net PHONE: 940-723-2166

For State Use Only

APPROVED BY: _____ TITLE _____ DATE _____

Conditions of Approval (if any):

Page 2 (C-103 Attachment)
Stephens & Johnson Operating Co.
State BN No. 2
API No. 30-015-02211
Eddy County, New Mexico

Well Data:

Elevation: 3428' GL; 3437' KB
Total Depth: 2225'
PBSD: 2201'
Surface Csg: 7 5/8", 26.4# set at 604', cmt w/225 sx, TOC @ surface
Prod. Csg: 4 1/2", 9.5# set @ 2225', cmt w/250 sx, TOC @ 520'
Perfs: 1815'-1817'; 1838'-1840'; 2066'-2068'; 2080'-2082';
(DF depths) 2100'-2102'; 2124'-2126'; 2139'-2141'; 2165'-2167';
2198'-2200'
Tubing: 2 3/8" Plastic Coated tbg w/AD-1 Nickel coated
packer set @ 1749'.

Remedial Work Procedure

- 4-27-23: TOOH with plastic coated tbg. TIH with 3 7/8" rotary bit, four drill collars and 2 3/8" tbg work string. Tag fill at 1820'. Drill out fill to 1866'. Shut down.
- 5-1-23: Continued to drill out fill to 2201'. TOOH with tbg, drill collars and bit. RIH on wireline with 4 1/2" 10K E-Z drill composite bridge plug and set it at 1800'. Spot 10' of cement on top of plug. Shut down.
- 5-2-23: Loaded 4 1/2" csg with water. Pump into 4 1/2" csg 0.5 bpm at 300 psi. Discovered hole in 7 5/8" surface csg 9' below surface.
- 5-5-23: Dug out around surface csg to 12' below surface csg and cut off surface csg at 12' below ground level. Cut off 4 1/2" csg 10' below ground level. Welded on slip collar and new section of 4 1/2" csg. Welded on slip collar and new section of 7 5/8" surface csg. Weld on bell nipple to 7 5/8" surface csg and install new 7 5/8" x 4 1/2" Larkin csg head. Weld on bell nipple to 4 1/2" csg and install new Larkin tbg head. Shut down.

- 5-8-23: TIH with 4 1/2" AD-1 packer and isolate csg leak in 4 1/2" csg between surface and 50'. TOOH with packer. Shut down.
- 5-10-23: Run CBL in 4 1/2" csg and found cement top \pm 520'. Run free point on 4 1/2" csg. Csg 100% free at a collar located at 104'. Run string shot and back off 4 1/2" csg at 104'. TOOH w/104' of 4 1/2" csg. Shut down.
- 5-11-23 RIH with 105.45' of 4 1/2" 11.6# csg. Screw into collar at 104'. Load hole and pressure 4 1/2" csg to 500 psi. No pressure loss. Cut off 4 1/2" csg and install tbg head. TIH with 3 7/8" rotary bit, two drill collars and 2 3/8" tbg. Tag cement/bridge plug at 1796'. Drill out cement and E-Z drill composite plug. Clean out well to 2201'. TOOH with tbg and drill bit. Shut down.
- 05-12-23 TIH with 4 1/2" 32A treating packer and set at 1773'. Acidize all perforations with 1500 gallons of 15% NEFE acid down tubing. Flowed well back to clean up hole. TOOH with tbg and packer. Shut down.
- 6-6-23 Delivered 2 3/8" plastic coated tbg. TIH with 4 1/2" x 2 3/8" AD-1 nickel coated packer and 2 3/8" plastic coated tbg. Circulate hole with packer fluid and set packer at 1749'.
- 6-7-23 Pressure 4 1/2" - 2 3/8" annulus to 600 psi and run 30 minute MIT. No pressure loss or gain. Shut well down, awaiting approval of MIT.

0190

State BN No. 2

Millman Yates-SR-QN-GB-SA East 6-8, 2023

WELL
30-015-02211FIELD
Current Wellbore Status

DATE

KB ELEVATION 3437

DF ELEVATION

GL ELEVATION 3428

PERMANENT WELL BORE DATA

DATA ON THIS COMPLETION

7 5/8" 26.4# Surface Csg
set at 604' w/225 SX
Cmt. TOC @ Surface

2 3/8" Plastic Lined Tbg

AD-1 Nickel Coated Packer
set @ 1749'

4 1/2" 9.5# Production Csg
set @ 2225'
Cmt w/250 SX
TOC @ 520'

TOC @ 520'

Queen Perfs:
1815-1817
1838-1840

Grayburg Perfs
2066-2068
2080-2082
2100-2102
2124-2126
2139-2141
2165-2167
2198-2200

PBTD - 2201'
TD - 2225'

Office

Energy, Minerals and Natural Resources

Revised July 18, 2013

District I - (575) 393-6161
 1625 N. French Dr., Hobbs, NM 88240
 District II - (575) 748-1283
 811 S. First St., Artesia, NM 88210
 District III - (505) 334-6178
 1000 Rio Brazos Rd., Aztec, NM 87410
 District IV - (505) 476-3460
 1220 S. St. Francis Dr., Santa Fe, NM
 87505

OIL CONSERVATION DIVISION
 1220 South St. Francis Dr.
 Santa Fe, NM 87505

WELL API NO.	30-015-02211
5. Indicate Type of Lease STATE <input checked="" type="checkbox"/> FEE <input type="checkbox"/>	
6. State Oil & Gas Lease No. 648	
7. Lease Name or Unit Agreement Name State BN	
8. Well Number 2	
9. OGRID Number 019958	
10. Pool name or Wildcat Millman-Yates-SR-QN-GB-SA, East	

SUNDRY NOTICES AND REPORTS ON WELLS
 (DO NOT USE THIS FORM FOR PROPOSALS TO DRILL OR TO DEEPEN OR PLUG BACK TO A
 DIFFERENT RESERVOIR. USE "APPLICATION FOR PERMIT" (FORM C-101) FOR SUCH
 PROPOSALS.)

1. Type of Well: Oil Well ☐ Gas Well ☐ Other ☐ Water Injection

2. Name of Operator
 Stephens & Johnson Operating Co.

3. Address of Operator
 P O Box 2249, Wichita Falls, TX 76307-2249

4. Well Location
 Unit Letter O : 660 feet from the South line and 1980 feet from the East line
 Section 11 Township 19S Range 28E NMPM County Eddy

11. Elevation (Show whether DR, RKB, RT, GR, etc.)
 3437' KB

12. Check Appropriate Box to Indicate Nature of Notice, Report or Other Data

NOTICE OF INTENTION TO:

PERFORM REMEDIAL WORK ☐ PLUG AND ABANDON ☐
 TEMPORARILY ABANDON ☐ CHANGE PLANS ☐
 PULL OR ALTER CASING ☐ MULTIPLE COMPL ☐
 DOWNHOLE COMMINGLE ☐
 CLOSED-LOOP SYSTEM ☐
 OTHER: ☐

SUBSEQUENT REPORT OF:

REMEDIAL WORK ☒ ALTERING CASING ☐
 COMMENCE DRILLING OPNS. ☐ P AND A ☐
 CASING/CEMENT JOB ☐
 OTHER: ☐

13. Describe proposed or completed operations. (Clearly state all pertinent details, and give pertinent dates, including estimated date of starting any proposed work). SEE RULE 19.15.7.14 NMAC. For Multiple Completions: Attach wellbore diagram of proposed completion or recompletion.

See Attachment

Spud Date:

Rig Release Date:

I hereby certify that the information above is true and complete to the best of my knowledge and belief.

SIGNATURE William M. Kincaid TITLE Petroleum Engineer DATE 6-8-2023

Type or print name William M. Kincaid E-mail address: mkincaid@sjoc.net PHONE: 940-723-2166

For State Use Only

APPROVED BY: _____ TITLE _____ DATE _____

Conditions of Approval (if any):

Page 2 (C-103 Attachment)
Stephens & Johnson Operating Co.
State BN No. 2
API No. 30-015-02211
Eddy County, New Mexico

Well Data:

Elevation: 3428' GL; 3437' KB
Total Depth: 2225'
PBSD: 2201'
Surface Csg: 7 5/8", 26.4# set at 604', cmt w/225 sx, TOC @ surface
Prod. Csg: 4 1/2", 9.5# set @ 2225', cmt w/250 sx, TOC @ 520'
Perfs: 1815'-1817'; 1838'-1840'; 2066'-2068'; 2080'-2082';
(DF depths) 2100'-2102'; 2124'-2126'; 2139'-2141'; 2165'-2167';
2198'-2200'
Tubing: 2 3/8" Plastic Coated tbg w/AD-1 Nickel coated
packer set @ 1749'.

Remedial Work Procedure

- 4-27-23: TOOH with plastic coated tbg. TIH with 3 7/8" rotary bit, four drill collars and 2 3/8" tbg work string. Tag fill at 1820'. Drill out fill to 1866'. Shut down.
- 5-1-23: Continued to drill out fill to 2201'. TOOH with tbg, drill collars and bit. RIH on wireline with 4 1/2" 10K E-Z drill composite bridge plug and set it at 1800'. Spot 10' of cement on top of plug. Shut down.
- 5-2-23: Loaded 4 1/2" csg with water. Pump into 4 1/2" csg 0.5 bpm at 300 psi. Discovered hole in 7 5/8" surface csg 9' below surface.
- 5-5-23: Dug out around surface csg to 12' below surface csg and cut off surface csg at 12' below ground level. Cut off 4 1/2" csg 10' below ground level. Welded on slip collar and new section of 4 1/2" csg. Welded on slip collar and new section of 7 5/8" surface csg. Weld on bell nipple to 7 5/8" surface csg and install new 7 5/8" x 4 1/2" Larkin csg head. Weld on bell nipple to 4 1/2" csg and install new Larkin tbg head. Shut down.

- 5-8-23: TIH with 4 1/2" AD-1 packer and isolate csg leak in 4 1/2" csg between surface and 50'. TOOH with packer. Shut down.
- 5-10-23: Run CBL in 4 1/2" csg and found cement top \pm 520'. Run free point on 4 1/2" csg. Csg 100% free at a collar located at 104'. Run string shot and back off 4 1/2" csg at 104'. TOOH w/104' of 4 1/2" csg. Shut down.
- 5-11-23 RIH with 105.45' of 4 1/2" 11.6# csg. Screw into collar at 104'. Load hole and pressure 4 1/2" csg to 500 psi. No pressure loss. Cut off 4 1/2" csg and install tbg head. TIH with 3 7/8" rotary bit, two drill collars and 2 3/8" tbg. Tag cement/bridge plug at 1796'. Drill out cement and E-Z drill composite plug. Clean out well to 2201'. TOOH with tbg and drill bit. Shut down.
- 05-12-23 TIH with 4 1/2" 32A treating packer and set at 1773'. Acidize all perforations with 1500 gallons of 15% NEFE acid down tubing. Flowed well back to clean up hole. TOOH with tbg and packer. Shut down.
- 6-6-23 Delivered 2 3/8" plastic coated tbg. TIH with 4 1/2" x 2 3/8" AD-1 nickel coated packer and 2 3/8" plastic coated tbg. Circulate hole with packer fluid and set packer at 1749'.
- 6-7-23 Pressure 4 1/2" - 2 3/8" annulus to 600 psi and run 30 minute MIT. No pressure loss or gain. Shut well down, awaiting approval of MIT.

0190

State BN No. 2

Millman Yates-SR-QN-GB-SA East 6-8, 2023

WELL
30-015-02211FIELD
Current Wellbore Status

DATE

KB ELEVATION 3437

DF ELEVATION

GL ELEVATION 3428

PERMANENT WELL BORE DATA

DATA ON THIS COMPLETION

7 5/8" 26.4# Surface Csg
set at 604' w/225 SX
Cmt. TOC @ Surface

2 3/8" Plastic Lined Tbg

AD-1 Nickel Coated Packer
set @ 1749'

4 1/2" 9.5# Production Csg
set @ 2225'
Cmt w/250 SX
TOC @ 520'

TOC @ 520'

Queen Perfs:
1815-1817
1838-1840

Grayburg Perfs
2066-2068
2080-2082
2100-2102
2124-2126
2139-2141
2165-2167
2198-2200

PBTD - 2201'
TD - 2225'

W4950/22A
South District-Artesia

State of New Mexico
Energy, Minerals and Natural Resources Department
Oil Conservation Division Hobbs District Office

BRADENHEAD TEST REPORT

Operator Name <u>Stephens + Johnson</u>	API Number <u>30-015-02211</u>
Property Name <u>State BN</u>	Well No. <u>2</u>

Surface Location

UL - Lot <u>0</u>	Section <u>11</u>	Township <u>19S</u>	Range <u>28E</u>	Feet from <u>660</u>	N/S Line <u>S</u>	Feet From <u>1980</u>	E/W Line <u>E</u>	County <u>Eddy</u>
----------------------	----------------------	------------------------	---------------------	-------------------------	----------------------	--------------------------	----------------------	-----------------------

Well Status

TA'D WELL YES	NO	SHUT-IN YES	NO	INJECTOR INJ	SWD	OIL	PRODUCER GAS	DATE <u>6/7/2023</u>
------------------	----	----------------	----	-----------------	-----	-----	-----------------	-------------------------

OBSERVED DATA

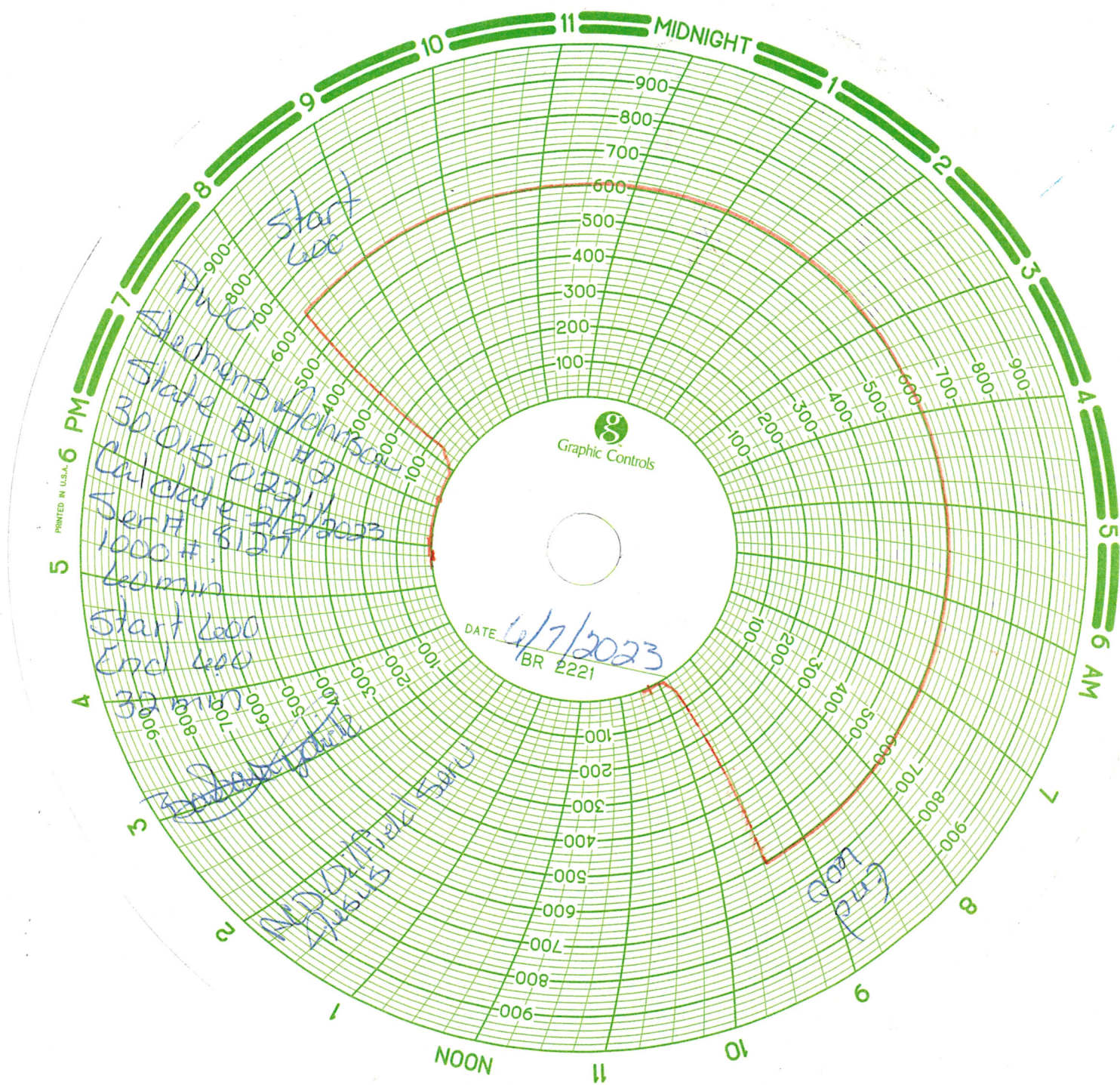
	(A)Surface	(B)Interm(1)	(C)Interm(2)	(D)Prod Csg	(E)Tubing
Pressure	<u>0</u>			<u>0</u>	<u>0</u>
Flow Characteristics					
Puff	Y / <u>N</u>	Y / N	Y / N	Y / <u>N</u>	CO2
Steady Flow	Y / <u>N</u>	Y / N	Y / N	Y / <u>N</u>	WTR <input checked="" type="checkbox"/>
Surges	Y / <u>N</u>	Y / N	Y / N	Y / <u>N</u>	GAS <input type="checkbox"/>
Down to nothing	<u>Y</u> / N	Y / N	Y / N	<u>Y</u> / N	Type of fluid injected for waterflood if applies
Gas or Oil	Y / <u>N</u>	Y / N	Y / N	Y / <u>N</u>	
Water	Y / <u>N</u>	Y / N	Y / N	Y / <u>N</u>	

Remarks - Please state for each string (A,B,C,D,E) pertinent information regarding bleed down or continuous build up if applies.

PWO - BHT OK

Signature:		OIL CONSERVATION DIVISION	
Printed name:		Entered into RBDMS	
Title:		Re-test	
E-mail Address:			
Date:	Phone:		
Witness: <u>[Signature]</u>			

INSTRUCTIONS ON BACK OF THIS FORM



Office

Energy, Minerals and Natural Resources

Revised July 18, 2013

District I - (575) 393-6161
 1625 N. French Dr., Hobbs, NM 88240
 District II - (575) 748-1283
 811 S. First St., Artesia, NM 88210
 District III - (505) 334-6178
 1000 Rio Brazos Rd., Aztec, NM 87410
 District IV - (505) 476-3460
 1220 S. St. Francis Dr., Santa Fe, NM
 87505

OIL CONSERVATION DIVISION
 1220 South St. Francis Dr.
 Santa Fe, NM 87505

WELL API NO.	30-015-02211
5. Indicate Type of Lease STATE <input checked="" type="checkbox"/> FEE <input type="checkbox"/>	
6. State Oil & Gas Lease No.	648
7. Lease Name or Unit Agreement Name State BN	
8. Well Number	2
9. OGRID Number	019958
10. Pool name or Wildcat	Millman-Yates-SR-QN-GB-SA, East

SUNDRY NOTICES AND REPORTS ON WELLS
 (DO NOT USE THIS FORM FOR PROPOSALS TO DRILL OR TO DEEPEN OR PLUG BACK TO A DIFFERENT RESERVOIR. USE "APPLICATION FOR PERMIT" (FORM C-101) FOR SUCH PROPOSALS.)

1. Type of Well: Oil Well ☐ Gas Well ☐ Other ☐ Water Injection

2. Name of Operator
 Stephens & Johnson Operating Co.

3. Address of Operator
 P O Box 2249, Wichita Falls, TX 76307-2249

4. Well Location
 Unit Letter O : 660 feet from the South line and 1980 feet from the East line
 Section 11 Township 19S Range 28E NMPM County Eddy

11. Elevation (Show whether DR, RKB, RT, GR, etc.)
 3437' KB

12. Check Appropriate Box to Indicate Nature of Notice, Report or Other Data

NOTICE OF INTENTION TO:

PERFORM REMEDIAL WORK ☐ PLUG AND ABANDON ☐
 TEMPORARILY ABANDON ☐ CHANGE PLANS ☐
 PULL OR ALTER CASING ☐ MULTIPLE COMPL ☐
 DOWNHOLE COMMINGLE ☐
 CLOSED-LOOP SYSTEM ☐
 OTHER: ☐

SUBSEQUENT REPORT OF:

REMEDIAL WORK ☒ ALTERING CASING ☐
 COMMENCE DRILLING OPNS. ☐ P AND A ☐
 CASING/CEMENT JOB ☐
 OTHER: ☐

13. Describe proposed or completed operations. (Clearly state all pertinent details, and give pertinent dates, including estimated date of starting any proposed work). SEE RULE 19.15.7.14 NMAC. For Multiple Completions: Attach wellbore diagram of proposed completion or recompletion.

See Attachment

Spud Date:

Rig Release Date:

I hereby certify that the information above is true and complete to the best of my knowledge and belief.

SIGNATURE William M. Kincaid TITLE Petroleum Engineer DATE 6-8-2023

Type or print name William M. Kincaid E-mail address: mkincaid@sjoc.net PHONE: 940-723-2166

For State Use Only

APPROVED BY: _____ TITLE _____ DATE _____

Conditions of Approval (if any):

Page 2 (C-103 Attachment)
Stephens & Johnson Operating Co.
State BN No. 2
API No. 30-015-02211
Eddy County, New Mexico

Well Data:

Elevation: 3428' GL; 3437' KB
Total Depth: 2225'
PBSD: 2201'
Surface Csg: 7 5/8", 26.4# set at 604', cmt w/225 sx, TOC @ surface
Prod. Csg: 4 1/2", 9.5# set @ 2225', cmt w/250 sx, TOC @ 520'
Perfs: 1815'-1817'; 1838'-1840'; 2066'-2068'; 2080'-2082';
(DF depths) 2100'-2102'; 2124'-2126'; 2139'-2141'; 2165'-2167';
2198'-2200'
Tubing: 2 3/8" Plastic Coated tbg w/AD-1 Nickel coated
packer set @ 1749'.

Remedial Work Procedure

- 4-27-23: TOOH with plastic coated tbg. TIH with 3 7/8" rotary bit, four drill collars and 2 3/8" tbg work string. Tag fill at 1820'. Drill out fill to 1866'. Shut down.
- 5-1-23: Continued to drill out fill to 2201'. TOOH with tbg, drill collars and bit. RIH on wireline with 4 1/2" 10K E-Z drill composite bridge plug and set it at 1800'. Spot 10' of cement on top of plug. Shut down.
- 5-2-23: Loaded 4 1/2" csg with water. Pump into 4 1/2" csg 0.5 bpm at 300 psi. Discovered hole in 7 5/8" surface csg 9' below surface.
- 5-5-23: Dug out around surface csg to 12' below surface csg and cut off surface csg at 12' below ground level. Cut off 4 1/2" csg 10' below ground level. Welded on slip collar and new section of 4 1/2" csg. Welded on slip collar and new section of 7 5/8" surface csg. Weld on bell nipple to 7 5/8" surface csg and install new 7 5/8" x 4 1/2" Larkin csg head. Weld on bell nipple to 4 1/2" csg and install new Larkin tbg head. Shut down.

- 5-8-23: TIH with 4 1/2" AD-1 packer and isolate csg leak in 4 1/2" csg between surface and 50'. TOOH with packer. Shut down.
- 5-10-23: Run CBL in 4 1/2" csg and found cement top $\pm 520'$. Run free point on 4 1/2" csg. Csg 100% free at a collar located at 104'. Run string shot and back off 4 1/2" csg at 104'. TOOH w/104' of 4 1/2" csg. Shut down.
- 5-11-23 RIH with 105.45' of 4 1/2" 11.6# csg. Screw into collar at 104'. Load hole and pressure 4 1/2" csg to 500 psi. No pressure loss. Cut off 4 1/2" csg and install tbg head. TIH with 3 7/8" rotary bit, two drill collars and 2 3/8" tbg. Tag cement/bridge plug at 1796'. Drill out cement and E-Z drill composite plug. Clean out well to 2201'. TOOH with tbg and drill bit. Shut down.
- 05-12-23 TIH with 4 1/2" 32A treating packer and set at 1773'. Acidize all perforations with 1500 gallons of 15% NEFE acid down tubing. Flowed well back to clean up hole. TOOH with tbg and packer. Shut down.
- 6-6-23 Delivered 2 3/8" plastic coated tbg. TIH with 4 1/2" x 2 3/8" AD-1 nickel coated packer and 2 3/8" plastic coated tbg. Circulate hole with packer fluid and set packer at 1749'.
- 6-7-23 Pressure 4 1/2" - 2 3/8" annulus to 600 psi and run 30 minute MIT. No pressure loss or gain. Shut well down, awaiting approval of MIT.

0190

State BN No. 2

Millman Yates-SR-QN-GB-SA East 6-8, 2023

WELL
30-015-02211FIELD
Current Wellbore Status

DATE

KB ELEVATION 3437

DF ELEVATION

GL ELEVATION 3428

PERMANENT WELL BORE DATA

DATA ON THIS COMPLETION

7 5/8" 26.4# Surface Csg
set at 604' w/225 SX
Cmt. TOC @ Surface

2 3/8" Plastic Lined Tbg

AD-1 Nickel Coated Packer
set @ 1749'

4 1/2" 9.5# Production Csg
set @ 2225'
Cmt w/250 SX
TOC @ 520'

TOC @ 520'

Queen Perfs:
1815-1817
1838-1840

Grayburg Perfs
2066-2068
2080-2082
2100-2102
2124-2126
2139-2141
2165-2167
2198-2200

PBTD - 2201'
TD - 2225'

District I
1625 N. French Dr., Hobbs, NM 88240
Phone:(575) 393-6161 Fax:(575) 393-0720
District II
811 S. First St., Artesia, NM 88210
Phone:(575) 748-1283 Fax:(575) 748-9720
District III
1000 Rio Brazos Rd., Aztec, NM 87410
Phone:(505) 334-6178 Fax:(505) 334-6170
District IV
1220 S. St Francis Dr., Santa Fe, NM 87505
Phone:(505) 476-3470 Fax:(505) 476-3462

State of New Mexico
Energy, Minerals and Natural Resources
Oil Conservation Division
1220 S. St Francis Dr.
Santa Fe, NM 87505

CONDITIONS

Action 225972

CONDITIONS

Operator: STEPHENS & JOHNSON OP CO P.O. Box 2249 Wichita Falls, TX 76307	OGRID: 19958
	Action Number: 225972
	Action Type: [C-103] Sub. Workover (C-103R)

CONDITIONS

Created By	Condition	Condition Date
mgebremichael	None	6/20/2023