

1625 N. French Dr., Hobbs, NM 88240

State of New Mexico  
Energy, Minerals & Natural Resources

Form C-104

Revised August 1, 2011

District II

811 S. First St., Artesia, NM 88210

District III

1000 Rio Brazos Rd., Aztec, NM 87410

District IV

1220 S. St. Francis Dr., Santa Fe, NM 87505

Oil Conservation Division

1220 South St. Francis Dr.

Santa Fe, NM 87505

Submit one copy to appropriate District Office

☐ AMENDED REPORT**I. REQUEST FOR ALLOWABLE AND AUTHORIZATION TO TRANSPORT**

<sup>1</sup> Operator name and Address <b>OXY USA INC</b> <b>P.O. BOX 4294 HOUSTON, TX 77210</b>		<sup>2</sup> OGRID Number <b>16696</b>
		<sup>3</sup> Reason for Filing Code/ Effective Date - RC
<sup>4</sup> API Number <b>30-015-45523</b>	<sup>5</sup> Pool Name <b>COTTON DRAW; BONE SPRING</b>	<sup>6</sup> Pool Code <b>13367</b>
<sup>7</sup> Property Code: <b>314855</b>	<sup>8</sup> Property Name: <b>CAL MON 35 FEDERAL</b>	<sup>9</sup> Well Number: <b>174H</b>

**II. <sup>10</sup> Surface Location**

UL or lot no.	Section	Township	Range	Lot Idn	Feet from the	North/South Line	Feet from the	East/West line	County
<b>B</b>	<b>35</b>	<b>23S</b>	<b>31E</b>		<b>310'</b>	<b>NORTH</b>	<b>2458'</b>	<b>EAST</b>	<b>EDDY</b>

**<sup>11</sup> Bottom Hole Location FTP: 224' FNL 1526' FEL LTP- 272' FNL 1521' FWL (BS PERFS: 11703'-11774')**

UL or lot no.	Section	Township	Range	Lot Idn	Feet from the	North/South line	Feet from the	East/West line	County
<b>O</b>	<b>35</b>	<b>23S</b>	<b>31E</b>		<b>27'</b>	<b>SOUTH</b>	<b>1473'</b>	<b>EAST</b>	<b>EDDY</b>
<sup>12</sup> Lse Code <b>F</b>	<sup>13</sup> Producing Method Code : <b>P</b>		<sup>14</sup> Gas Connection Date: <b>4/18/19</b>		<sup>15</sup> C-129 Permit Number		<sup>16</sup> C-129 Effective Date		<sup>17</sup> C-129 Expiration Date

**III. Oil and Gas Transporters**

<sup>18</sup> Transporter OGRID	<sup>19</sup> Transporter Name and Address	<sup>20</sup> O/G/W
<b>237722</b>	<b>CENTURION PIPELINE, L.P.</b>	<b>O</b>
<b>151618</b>	<b>ENTERPRISE FIELD SERVICES LLC</b>	<b>G</b>

**IV. Well Completion Data**

<sup>21</sup> Spud Date <b>01/06/2019</b>	<sup>22</sup> Ready Date <b>6/8/2022</b>	<sup>23</sup> TD <b>11930'V/16839'MD</b>	<sup>24</sup> PBTB <b>11930'V/16780'M</b>	<sup>25</sup> Perforations <b>11703'-11774'MD</b>	<sup>26</sup> DHC, MC <b>DHC-5199</b>
<sup>27</sup> Hole Size		<sup>28</sup> Casing & Tubing Size		<sup>29</sup> Depth Set	<sup>30</sup> Sacks Cement
<b>14-3/4"</b>		<b>10-3/4"</b>		<b>847'</b>	<b>850 (SURFACE)</b>
<b>9-7/8"</b>		<b>7-5/8"</b>		<b>11375'</b>	<b>2452 (SURFACE)</b>
<b>6-3/4"</b>		<b>5-1/2"</b>		<b>11998'-SURFACE</b>	<b>720 (TOC @ 10875')</b>
<b>6-3/4"</b>		<b>4-1/2"</b>		<b>16780'-11998'</b>	<b>720 (TOC @ 10875')</b>

**V. Well Test Data**

<sup>31</sup> Date New Oil <b>06/08/2022</b>	<sup>32</sup> Gas Delivery Date <b>06/08/2022</b>	<sup>33</sup> Test Date <b>06/10/2022</b>	<sup>34</sup> Test Length <b>24 hours</b>	<sup>35</sup> Tbg. Pressure <b>136psi</b>	<sup>36</sup> Csg. Pressure <b>1032psi</b>
<sup>37</sup> Choke Size <b>NA</b>	<sup>38</sup> Oil <b>11 bbls</b>	<sup>39</sup> Water <b>42 bbls</b>	<sup>40</sup> Gas <b>31 mcf</b>		<sup>41</sup> Test Method <b>GAS LIFT</b>

<sup>42</sup> I hereby certify that the rules of the Oil Conservation Division have been complied with and that the information given above is true and complete to the best of my knowledge and belief.

Signature: *Leslie T. Reeves*Approved by: *PATRICIA MARTINEZ*Printed name:  
LESLIE REEVESTitle: *PETROLEUM SPECIALIST*Title:  
REGULATORY MGRApproval Date: *6/28/2023*E-mail Address:  
LESLIE REEVES@oxy.comDate: *01/12/2023* Phone: *713-497-2492*

1625 N. French Dr., Hobbs, NM 88240

State of New Mexico  
Energy, Minerals & Natural Resources

Form C-104

Revised August 1, 2011

District II

811 S. First St., Artesia, NM 88210

District III

1000 Rio Brazos Rd., Aztec, NM 87410

District IV

1220 S. St. Francis Dr., Santa Fe, NM 87505

Oil Conservation Division

1220 South St. Francis Dr.

Santa Fe, NM 87505

Submit one copy to appropriate District Office

☐ AMENDED REPORT**I. REQUEST FOR ALLOWABLE AND AUTHORIZATION TO TRANSPORT**

<sup>1</sup> Operator name and Address <b>OXY USA INC</b> <b>P.O. BOX 4294 HOUSTON, TX 77210</b>		<sup>2</sup> OGRID Number <b>16696</b>
		<sup>3</sup> Reason for Filing Code/ Effective Date - RC
<sup>4</sup> API Number <b>30-015-45523</b>	<sup>5</sup> Pool Name <b>WC-015 G-08 S233135D; WOLFCAMP</b>	<sup>6</sup> Pool Code <b>98236</b>
<sup>7</sup> Property Code: <b>314855</b>	<sup>8</sup> Property Name: <b>CAL MON 35 FEDERAL</b>	<sup>9</sup> Well Number: <b>174H</b>

**II. <sup>10</sup> Surface Location**

UI or lot no.	Section	Township	Range	Lot Idn	Feet from the	North/South Line	Feet from the	East/West line	County
<b>B</b>	<b>35</b>	<b>23S</b>	<b>31E</b>		<b>310'</b>	<b>NORTH</b>	<b>2458'</b>	<b>EAST</b>	<b>EDDY</b>

**<sup>11</sup> Bottom Hole Location FTP: 273' FNL 1520' FEL LTP- 116' FSL 1476' FEL (Wolfcamp Perfs 11775'-16749'MD)**

UL or lot no.	Section	Township	Range	Lot Idn	Feet from the	North/South line	Feet from the	East/West line	County
<b>O</b>	<b>35</b>	<b>23S</b>	<b>31E</b>		<b>27'</b>	<b>SOUTH</b>	<b>1473'</b>	<b>EAST</b>	<b>EDDY</b>
<sup>12</sup> Lse Code <b>F</b>	<sup>13</sup> Producing Method Code : <b>P</b>		<sup>14</sup> Gas Connection Date: <b>4/18/19</b>		<sup>15</sup> C-129 Permit Number		<sup>16</sup> C-129 Effective Date		<sup>17</sup> C-129 Expiration Date

**III. Oil and Gas Transporters**

<sup>18</sup> Transporter OGRID	<sup>19</sup> Transporter Name and Address	<sup>20</sup> O/G/W
<b>237722</b>	<b>CENTURION PIPELINE, L.P.</b>	<b>O</b>
<b>151618</b>	<b>ENTERPRISE FIELD SERVICES LLC</b>	<b>G</b>

**IV. Well Completion Data**

<sup>21</sup> Spud Date <b>01/06/2019</b>	<sup>22</sup> Ready Date <b>06/08/2022</b>	<sup>23</sup> TD <b>11930'V/16839'MD</b>	<sup>24</sup> PBSD <b>11930'V/16780'M</b>	<sup>25</sup> Perforations <b>11775'-16749'MD</b>	<sup>26</sup> DHC, MC <b>DHC-5199</b>
<sup>27</sup> Hole Size		<sup>28</sup> Casing & Tubing Size		<sup>29</sup> Depth Set	<sup>30</sup> Sacks Cement
<b>14-3/4"</b>		<b>10-3/4"</b>		<b>847'</b>	<b>850 (SURFACE)</b>
<b>9-7/8"</b>		<b>7-5/8"</b>		<b>11375'</b>	<b>2452 (SURFACE)</b>
<b>6-3/4"</b>		<b>5-1/2"</b>		<b>11995'-SURFACE</b>	<b>720 (TOC @ 10875')</b>
<b>6-3/4"</b>		<b>4-1/2"</b>		<b>16780'-11998'</b>	<b>720 (TOC @ 10875')</b>

**V. Well Test Data**

<sup>31</sup> Date New Oil <b>06/08/2022</b>	<sup>32</sup> Gas Delivery Date <b>06/08/2022</b>	<sup>33</sup> Test Date <b>06/10/2022</b>	<sup>34</sup> Test Length <b>24 Hours</b>	<sup>35</sup> Tbg. Pressure <b>136psi</b>	<sup>36</sup> Csg. Pressure <b>1032psi</b>
<sup>37</sup> Choke Size <b>NA</b>	<sup>38</sup> Oil <b>168 bbls</b>	<sup>39</sup> Water <b>667 bbls</b>	<sup>40</sup> Gas <b>492 mcf</b>		<sup>41</sup> Test Method <b>GAS LIFT</b>

<sup>42</sup> I hereby certify that the rules of the Oil Conservation Division have been complied with and that the information given above is true and complete to the best of my knowledge and belief.

Signature: *Leslie T. Reeves*Approved by: *PATRICIA MARTINEZ*Printed name:  
LESLIE REEVESTitle:  
*PETROLEUM SPECIALIST*Title:  
REGULATORY MGRApproval Date: *6/28/2023*E-mail Address:  
LESLIE\_REEVES@oxy.comDate: *01/12/2023* Phone: *713-497-2492*

State of New Mexico  
Energy, Minerals & Natural Resources Department  
OIL CONSERVATION DIVISION  
1220 South St. Francis Dr.  
Santa Fe, NM 87505

*Form C-102  
Revised August 1, 2011  
Submit one copy to appropriate  
District Office*

☒ **AMENDED REPORT**

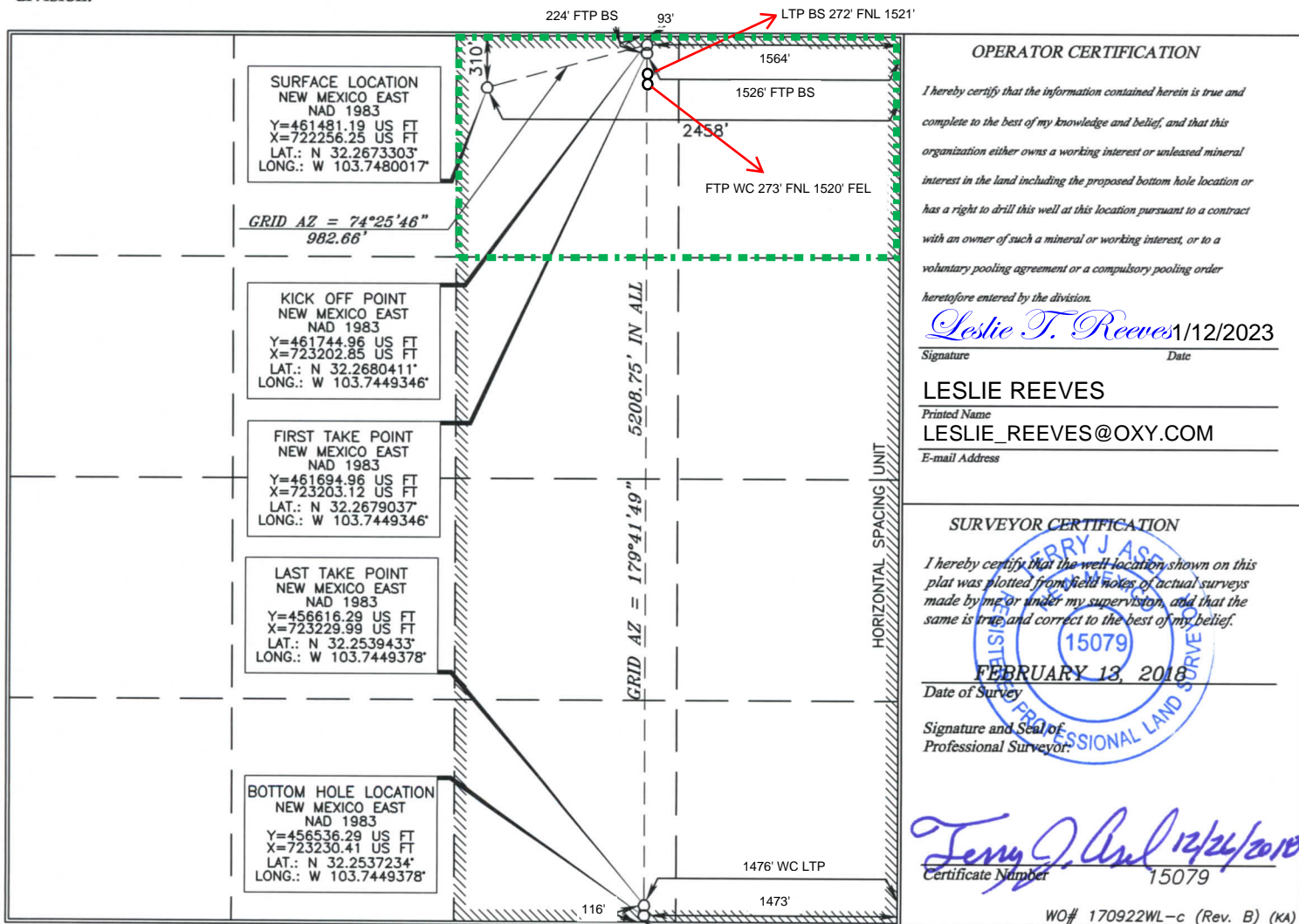
API Number		Pool Code	Pool Name
30-015-45523		13367	COTTON DRAW; BONE SPRING
Property Code	Property Name		Well Number
314855	CAL-MON "35" FEDERAL		174H
OGRID No.	Operator Name		Elevation
16696	OXY USA INC.		3463.8'

UL or lot no.	Section	Township	Range	Lot Idn	Feet from the	North/South line	Feet from the	East/West line	County
B	35	23 SOUTH	31 EAST, N.M.P.M.		310'	NORTH	2458'	EAST	EDDY

<i>UL or lot no.</i>	<i>Section</i>	<i>Township</i>	<i>Range</i>	<i>Lot Idn</i>	<i>Feet from the</i>	<i>North/South line</i>	<i>Feet from the</i>	<i>East/West line</i>	<i>County</i>
<i>0</i>	<i>35</i>	<i>23 SOUTH</i>	<i>31 EAST, N.M.P.M.</i>		<i>20'</i>	<i>SOUTH</i>	<i>1510'</i>	<i>EAST</i>	<i>EDDY</i>

Dedicated Acres	Joint or Infill	Consolidation Code	Order No.
80			

*No allowable will be assigned to this completion until all interests have been consolidated or a non-standard unit has been approved by the division.*





District I  
1625 N. French Dr., Hobbs, NM 88240  
Phone: (575) 393-6161 Fax: (575) 393-0720  
District II  
811 S. First St., Artesia, NM 88210  
Phone: (575) 748-1283 Fax: (575) 748-9720  
District III  
1000 Rio Brazos Road, Aztec, NM 87410  
Phone: (505) 334-6178 Fax: (505) 334-6170  
District IV  
1220 S. St. Francis Dr., Santa Fe, NM 87505  
Phone: (505) 476-3460 Fax: (505) 476-3462

State of New Mexico  
Energy, Minerals & Natural Resources Department  
OIL CONSERVATION DIVISION  
1220 South St. Francis Dr.  
Santa Fe, NM 87505

Form C-102  
Revised August 1, 2011  
Submit one copy to appropriate  
District Office

☒ AMENDED REPORT

WELL LOCATION AND ACREAGE DEDICATION PLAT

API Number 30-015-45523	Pool Code 98236	Pool Name WC-015 G-08 S233135D; WOLFCAMP
Property Code 314855	Property Name CAL-MON "35" FEDERAL	Well Number 174H
OGRID No. 16696	Operator Name OXY USA INC.	Elevation 3463.8'

Surface Location

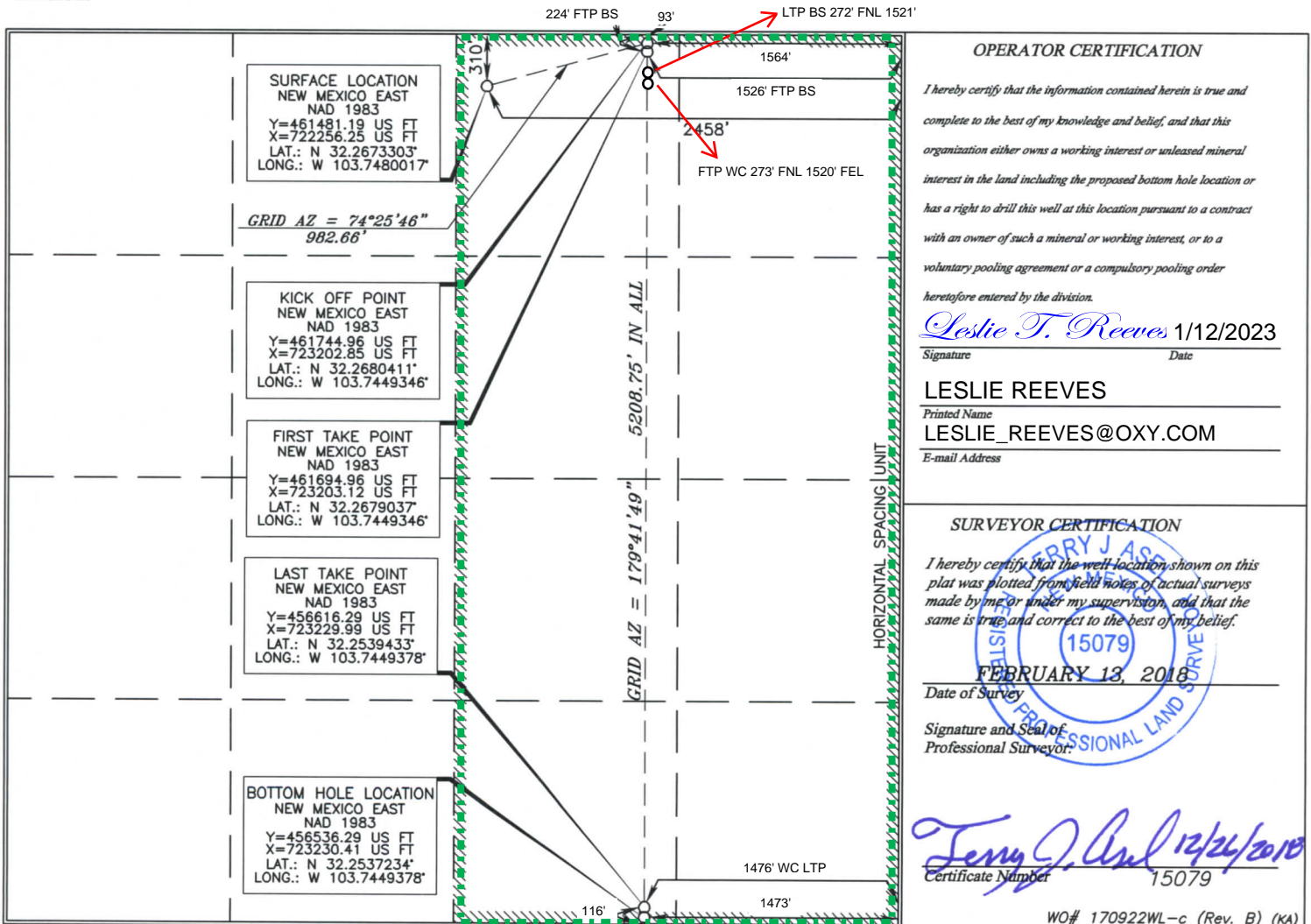
UL or lot no.	Section	Township	Range	Lot Idn	Feet from the	North/South line	Feet from the	East/West line	County
B	35	23 SOUTH	31 EAST, N.M.P.M.		310'	NORTH	2458'	EAST	EDDY

Bottom Hole Location If Different From Surface

UL or lot no.	Section	Township	Range	Lot Idn	Feet from the	North/South line	Feet from the	East/West line	County
O	35	23 SOUTH	31 EAST, N.M.P.M.		20'	SOUTH	1510'	EAST	EDDY

Dedicated Acres 320	Joint or Infill	Consolidation Code	Order No.
------------------------	-----------------	--------------------	-----------

No allowable will be assigned to this completion until all interests have been consolidated or a non-standard unit has been approved by the division.



Well Name: CAL-MON 35 FEDERAL	Well Location: T23S / R31E / SEC 35 / NWNE / 32.2673303 / -103.7480017	County or Parish/State: EDDY / NM
Well Number: 174H	Type of Well: OIL WELL	Allottee or Tribe Name:
Lease Number: NMNM19199	Unit or CA Name:	Unit or CA Number:
US Well Number: 300154552300S1	Well Status: Producing Oil Well	Operator: OXY USA INCORPORATED

Subsequent Report

Sundry ID: 2686694  
Type of Submission: Subsequent Report  
Date Sundry Submitted: 01/12/2023  
Date Operation Actually Began: 05/17/2022  
Type of Action: Recompletion  
Time Sundry Submitted: 01:51

Actual Procedure: Oxy USA Inc. added perforations from 11703' - 11988' and frac'd in 2 stages. See the attached job summary details, updated wellbore diagram for reference. RTP after adding perforations 6/8/2022. Well test date 6/10/22. Updated Complete Report Filed 1/12/2023. (WCR2023011285880)

SR Attachments

Actual Procedure

- 174H\_WBD\_20230112062500.pdf
- CalMon35Federal174H\_SRSundryRCAAttach\_20230112062110.pdf

Received by OCD: 1/12/2023 3:15:12 PM

Page 6 of 13

Well Name: CAL-MON 35 FEDERAL	Well Location: T23S / R31E / SEC 35 / NWNE / 32.2673303 / -103.7480017	County or Parish/State: EDDY / NM
Well Number: 174H	Type of Well: OIL WELL	Allottee or Tribe Name:
Lease Number: NMNM19199	Unit or CA Name:	Unit or CA Number:
US Well Number: 300154552300S1	Well Status: Producing Oil Well	Operator: OXY USA INCORPORATED

Operator

I certify that the foregoing is true and correct. Title 18 U.S.C. Section 1001 and Title 43 U.S.C. Section 1212, make it a crime for any person knowingly and willfully to make to any department or agency of the United States any false, fictitious or fraudulent statements or representations as to any matter within its jurisdiction. Electronic submission of Sundry Notices through this system satisfies regulations requiring a

Operator Electronic Signature: LESLIE REEVES

Signed on: JAN 12, 2023 01:51 PM

Name: OXY USA INCORPORATED

Title: Advisor Regulatory

Street Address: 5 GREENWAY PLAZA, SUITE 110

City: HOUSTONState: TX

Phone: (713) 497-2492

Email address: LESLIE\_REEVES@OXY.COM

Field

Representative Name:

Street Address:

City:State:Zip:

Phone:

Email address:

CAL MON 35 FEDERAL #174H

30-015-45523 - WORKOVER JOB SUMMARY

5/17/22 MIRU. BLED OFF CSG/TBG PSI. PUMPED 70BBLS H2O. NDWH. NU AND FUNCTION TEST BOP.

5/18/22 POOH WITH TUBING AND PACKER.

5/19/22 RIH WITH SCRAPER AND C/O TO 11962'.

5/20/22 SECOND C/O RUN TO 12030'. HYDRO-TESTED TO 800PSI, HELD.

5/23/22 RIH WITH RBP AND PKR, SET @ 11369', PKR @ 11344'. TESTED RBP TO 300PSI, HELD. RELEASED PKR AND POOH WITH RBP.

5/24/22 CONT'D TO POOH WITH PKR TUBING AND RBP.

5/25/22 ND BOP. NU FRAC TREE. HANDOVER FOR FRAC.

5/29/22 MIRU CRANE AND FRAC. PSI TESTED 250PSI LOW/9800PSI HIGH, 15 MIN HELD.

5/30/22 NOTIFIED BLM OF START. PSI TESTED 2500PSI LOW/ 8500 PSI HIGH, GOOD TEST. WAITED ON CUDD.

5/31/22 RIH AND PERF'D STAGE 1 @ 11988'-11953', PLUG DEPTH @ 12000'. PUMPED SAND AND FLUID TO FRAC.

6/1/22 RIH AND PERF'D STAGE 2 @ 11703' – 11838', PLUG DEPTH @ 11850'. PUMPED SAND AND FLUID TO FRAC HANDOVER TO PROD.

TOTAL BBLS PUMPED: 11,455 BBLS

TOTAL 100% 100 MESH SAND 594,600LBS

TOTAL 2 STAGES

TOP PERF 11,703' – BOTTOM PERF 11,988'

6/2/22 RDMO FRAC. NU AND FUNCTION TEST BOP.

6/3/22 RIH AND SET ARROW PKR @ 11670. POOH.

6/4-6/22 RIH W/ 2-7/8" TUBING.

6/7/22 LAND TUBING. EOT @ 11685'. BREAK DISK. TTP.

11703'-11774' Bone Spring perforations

11775'-11988' and 12023'-16749' Wolfcamp perforations

Submit To Appropriate District Office Two Copies <u>District I</u> 1625 N. French Dr., Hobbs, NM 88240 <u>District II</u> 811 S. First St., Artesia, NM 88210 <u>District III</u> 1000 Rio Brazos Rd., Aztec, NM 87410 <u>District IV</u> 1220 S. St. Francis Dr., Santa Fe, NM 87505		State of New Mexico Energy, Minerals and Natural Resources  Oil Conservation Division 1220 South St. Francis Dr. Santa Fe, NM 87505			Form C-105 Revised April 3, 2017					
WELL COMPLETION OR RECOMPLETION REPORT AND LOG										
4. Reason for filing:  <input checked="" type="checkbox"/> <b>COMPLETION REPORT</b> (Fill in boxes #1 through #31 for State and Fee wells only)  <input type="checkbox"/> <b>C-144 CLOSURE ATTACHMENT</b> (Fill in boxes #1 through #9, #15 Date Rig Released and #32 and/or #33; attach this and the plat to the C-144 closure report in accordance with 19.15.17.13.K NMAC)								5. Lease Name or Unit Agreement Name CAL MON 35 FEDERAL		
								6. Well Number:  <b>#174H</b>		
7. Type of Completion: <input type="checkbox"/> NEW WELL <input checked="" type="checkbox"/> WORKOVER <input type="checkbox"/> DEEPENING <input type="checkbox"/> PLUGBACK <input type="checkbox"/> DIFFERENT RESERVOIR <input type="checkbox"/> OTHER _____										
8. Name of Operator <b>OXY USA INC.</b>						9. OGRID <b>16696</b>				
10. Address of Operator <b>5 GREENWAY PLAZA, SUITE 110, HOUSTON, TX</b>						11. Pool name or Wildcat COTTON DRAW; BS & WC-015 G-08 S233135D; WC				
12. Location	Unit Ltr	Section	Township	Range	Lot	Feet from the	N/S Line	Feet from the	E/W Line	County
<b>Surface:</b>	<b>B</b>	<b>35</b>	<b>23S</b>	<b>31E</b>		<b>310</b>	<b>NORTH</b>	<b>2458</b>	<b>EAST</b>	<b>EDDY</b>
<b>BH:</b>	<b>O</b>	<b>35</b>	<b>23S</b>	<b>31E</b>		<b>27</b>	<b>SOUTH</b>	<b>1473</b>	<b>EAST</b>	<b>EDDY</b>
13. Date Spudded <b>01/06/2019</b>	14. Date T.D. Reached <b>03/02/2019</b>		15. Date Rig Released <b>03/02/2019</b>			16. Date Completed (Ready to Produce) <b>06/08/2022</b>		17. Elevations (DF and RKB, RT, GR, etc.) <b>3463 GL</b>		
18. Total Measured Depth of Well <b>16839'MD/11930'TVD</b>			19. Plug Back Measured Depth <b>16780'MD /11930'TVD</b>			20. Was Directional Survey Made? <b>YES</b>		21. Type Electric and Other Logs Run <b>NONE DURING RECOMPLETION</b>		
22. Producing Interval(s), of this completion - Top, Bottom, Name <b>BONE SPRING 11703' - 11774'; WOLFCAMP 11775' - 16749'</b>										
<b>23. CASING RECORD (Report all strings set in well)</b>										
CASING SIZE		WEIGHT LB./FT.		DEPTH SET		HOLE SIZE		CEMENTING RECORD		AMOUNT PULLED
10-3/4"		45.5		847		14-3/4"		850SX (SURFACE)		
7-5/8"		26.4		11375		9-7/8"		2452SX (SURFACE)		
5-1/2"		20		11998		6-3/4"		720SX (~10875')		
4-1/2"		13.5		16780		6-3/4"		720SX (~10875')		
24. LINER RECORD						25. TUBING RECORD				
SIZE	TOP	BOTTOM	SACKS CEMENT	SCREEN		SIZE	DEPTH SET		PACKER SET	
NA						2-7/8"	11685'		11670'	
26. Perforation record (interval, size, and number) <b>BONE SPRING 11703' - 11774'; 0.40 (60 SHOTS)</b>						27. ACID, SHOT, FRACTURE, CEMENT, SQUEEZE, ETC.				
						DEPTH INTERVAL		AMOUNT AND KIND MATERIAL USED		
						11703'-11774'		11,455BBLs FLUID, 100 MESH 594600LBS- 2 STAGES		
28. PRODUCTION										
Date First Production <b>06/08/2022</b>		Production Method ( <i>Flowing, gas lift, pumping - Size and type pump</i> ) <b>GAS LIFT</b>				Well Status ( <i>Prod. or Shut-in</i> ) <b>PROD</b>				
Date of Test <b>06/10/2022</b>	Hours Tested <b>24 hours</b>	Choke Size <b>NA</b>	Prod'n For Test Period	Oil - Bbl <b>179</b>	Gas - MCF <b>523</b>	Water - Bbl. <b>708</b>	Gas - Oil Ratio			
Flow Tubing Press.	Casing Pressure <b>1032</b>	Calculated 24-Hour Rate	Oil - Bbl. <b>179</b>	Gas - MCF <b>523</b>	Water - Bbl. <b>708</b>	Oil Gravity - API - ( <i>Corr.</i> )				
29. Disposition of Gas ( <i>Sold, used for fuel, vented, etc.</i> ) <b>SOLD</b>								30. Test Witnessed By		
31. List Attachments										
32. If a temporary pit was used at the well, attach a plat with the location of the temporary pit.								33. Rig Release Date:		
34. If an on-site burial was used at the well, report the exact location of the on-site burial:										
Latitude _____ Longitude _____ NAD83										
I hereby certify that the information shown on both sides of this form is true and complete to the best of my knowledge and belief										
Signature <i>Leslie T. Reeves</i>			Printed Name <b>LESLIE REEVES</b>		Title <b>REGULATORY MANAGER</b>			Date <b>1/12/2023</b>		
E-mail Address <b>LESLIE_REEVES@OXY.COM</b>										



This form is to be filed with the appropriate District Office of the Division not later than 20 days after the completion of any newly-drilled or deepened well and not later than 60 days after completion of closure. When submitted as a completion report, this shall be accompanied by one copy of all electrical and radio-activity logs run on the well and a summary of all special tests conducted, including drill stem tests. All depths reported shall be measured depths. In the case of directionally drilled wells, true vertical depths shall also be reported. For multiple completions, items 11, 12 and 26-31 shall be reported for each zone.

Southeastern New Mexico		Northwestern New Mexico	
T. Anhy	T. Canyon	T. Ojo Alamo	T. Penn A"
T. Salt	T. Strawn	T. Kirtland	T. Penn. "B"
B. Salt	T. Atoka	T. Fruitland	T. Penn. "C"
T. Yates	T. Miss	T. Pictured Cliffs	T. Penn. "D"
T. 7 Rivers	T. Devonian	T. Cliff House	T. Leadville
T. Queen	T. Silurian	T. Menefee	T. Madison
T. Grayburg	T. Montoya	T. Point Lookout	T. Elbert
T. San Andres	T. Simpson	T. Mancos	T. McCracken
T. Glorieta	T. McKee	T. Gallup	T. Ignacio Otzte
T. Paddock	T. Ellenburger	Base Greenhorn	T. Granite
T. Blinebry	T. Gr. Wash	T. Dakota	
T. Tubb	T. Delaware Sand	T. Morrison	
T. Drinkard	T. Bone Springs	T. Todilto	
T. Abo	T.	T. Entrada	
T. Wolfcamp	T.	T. Wingate	
T. Penn	T.	T. Chinle	
T. Cisco (Bough C)	T.	T. Permian	

No. 1, from.....to.....  
No. 2, from.....to.....  
No. 3, from.....to.....  
No. 4, from.....to.....

Include data on rate of water inflow and elevation to which water rose in hole.

No. 1, from.....to.....feet.....  
 No. 2, from.....to.....feet.....  
 No. 3, from.....to.....feet.....

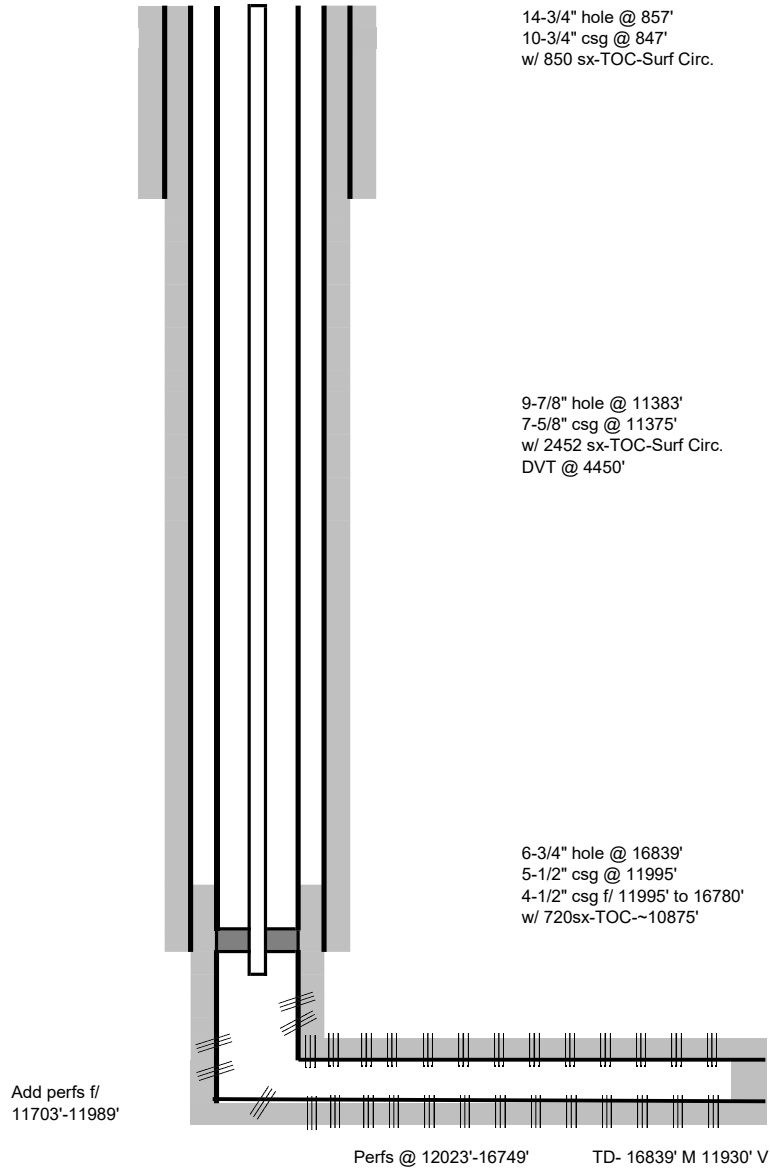
From	To	Thickness In Feet	Lithology
			SEE THE ATTACHED TOPS

Formation	Top	Bottom	Descriptions, Contents, etc.	Name	Top
					Meas. Depth
BELL CANYON	4438	5347	OIL, GAS, WATER	RUSTLER	750
CHERRY CANYON	5348	6585	OIL, GAS, WATER	SALADO	1071
BRUSHY CANYON	6586	8316	OIL, GAS, WATER	CASTILE	2959
BONE SPRING	8317	9152	OIL, GAS, WATER	LAMAR	4415
BONE SPRING 1ST	9153	9688	OIL, GAS, WATER	BELL CANYON	4438
BONE SPRING 2ND	9689	10523	OIL, GAS, WATER	CHERRY CANYON	5348
BONE SPRING 3RD	10524	11774	OIL, GAS, WATER	BRUSHY CANYON	6586
WOLFCAMP	11775	11942	OIL, GAS, WATER	BONE SPRING	8317

32. Additional remarks (include plugging procedure):  
 52. FORMATION (LOG) MARKERS CONTD.

1ST BONE SPRING 9153' MD  
 2ND BONE SPRING 9689' MD  
 3RD BONE SPRING 10524' MD  
 WOLFCAMP 11775' MD

OXY USA INC  
Cal-Mon 35 Federal 174H  
API No. 30-015-45523  
Proposed



**District I**  
1625 N. French Dr., Hobbs, NM 88240  
Phone:(575) 393-6161 Fax:(575) 393-0720  
**District II**  
811 S. First St., Artesia, NM 88210  
Phone:(575) 748-1283 Fax:(575) 748-9720  
**District III**  
1000 Rio Brazos Rd., Aztec, NM 87410  
Phone:(505) 334-6178 Fax:(505) 334-6170  
**District IV**  
1220 S. St Francis Dr., Santa Fe, NM 87505  
Phone:(505) 476-3470 Fax:(505) 476-3462

State of New Mexico  
Energy, Minerals and Natural Resources  
Oil Conservation Division  
1220 S. St Francis Dr.  
Santa Fe, NM 87505

ACKNOWLEDGMENTS  
  
Action 175582

ACKNOWLEDGMENTS

Operator: OXY USA INC P.O. Box 4294 Houston, TX 772104294	OGRID: 16696
	Action Number: 175582
	Action Type: [C-104] Completion Packet (C-104C)

ACKNOWLEDGMENTS

<input checked="" type="checkbox"/>	I hereby certify that the required Water Use Report has been, or will be, submitted for this wells completion.
<input checked="" type="checkbox"/>	I hereby certify that the required FracFocus disclosure has been, or will be, submitted for this wells completion.

**District I**  
1625 N. French Dr., Hobbs, NM 88240  
Phone:(575) 393-6161 Fax:(575) 393-0720

**District II**  
811 S. First St., Artesia, NM 88210  
Phone:(575) 748-1283 Fax:(575) 748-9720

**District III**  
1000 Rio Brazos Rd., Aztec, NM 87410  
Phone:(505) 334-6178 Fax:(505) 334-6170

**District IV**  
1220 S. St Francis Dr., Santa Fe, NM 87505  
Phone:(505) 476-3470 Fax:(505) 476-3462

**State of New Mexico**  
**Energy, Minerals and Natural Resources**  
**Oil Conservation Division**  
**1220 S. St Francis Dr.**  
**Santa Fe, NM 87505**

CONDITIONS

Action 175582

CONDITIONS

Operator: OXY USA INC P.O. Box 4294 Houston, TX 772104294	OGRID: 16696
	Action Number: 175582
	Action Type: [C-104] Completion Packet (C-104C)

CONDITIONS

Created By	Condition	Condition Date
plmartinez	None	6/28/2023