

Office
 District I – (575) 393-6161
 1625 N. French Dr., Hobbs, NM 88240
 District II – (575) 748-1283
 811 S. First St., Artesia, NM 88210
 District III – (505) 334-6178
 1000 Rio Brazos Rd., Aztec, NM 87410
 District IV – (505) 476-3460
 1220 S. St. Francis Dr., Santa Fe, NM
 87505

State of New Mexico
 Energy, Minerals and Natural Resources

Form C-103
 Revised July 18, 2013

OIL CONSERVATION DIVISION
 1220 South St. Francis Dr.
 Santa Fe, NM 87505

SUNDRY NOTICES AND REPORTS ON WELLS (DO NOT USE THIS FORM FOR PROPOSALS TO DRILL OR TO DEEPEN OR PLUG BACK TO A DIFFERENT RESERVOIR. USE "APPLICATION FOR PERMIT" (FORM C-101) FOR SUCH PROPOSALS.)		WELL API NO. 30-039-26968
1. Type of Well: Oil Well <input type="checkbox"/> Gas Well <input checked="" type="checkbox"/> Other		5. Indicate Type of Lease STATE <input checked="" type="checkbox"/> FEE <input type="checkbox"/>
2. Name of Operator LOGOS Operating, LLC		6. State Oil & Gas Lease No. E-347
3. Address of Operator 2010 Afton Place, Farmington NM 87401		7. Lease Name or Unit Agreement Name Rosa Unit
4. Well Location Unit Letter <u>C</u> : <u>210</u> feet from the <u>ENL</u> line and <u>1905</u> feet from the <u>FWL</u> line Section <u>32</u> Township <u>31N</u> Range <u>05W</u> NMPM County <u>Rio Arriba</u>		8. Well Number <u>24C</u>
11. Elevation (Show whether DR, RKB, RT, GR, etc.) 6500'		9. OGRID Number 289408
		10. Pool name or Wildcat Basin Dakota / Blanco Mesaverde

12. Check Appropriate Box to Indicate Nature of Notice, Report or Other Data

NOTICE OF INTENTION TO:	SUBSEQUENT REPORT OF:
PERFORM REMEDIAL WORK <input type="checkbox"/>	REMEDIAL WORK <input type="checkbox"/>
TEMPORARILY ABANDON <input type="checkbox"/>	ALTERING CASING <input type="checkbox"/>
PULL OR ALTER CASING <input type="checkbox"/>	COMMENCE DRILLING OPNS. <input type="checkbox"/>
DOWNHOLE COMMINGLE <input type="checkbox"/>	P AND A <input type="checkbox"/>
CLOSED-LOOP SYSTEM <input type="checkbox"/>	CASING/CEMENT JOB <input type="checkbox"/>
OTHER: Wellbore Isolation <input checked="" type="checkbox"/>	OTHER: <input type="checkbox"/>

13. Describe proposed or completed operations. (Clearly state all pertinent details, and give pertinent dates, including estimated date of starting any proposed work). SEE RULE 19.15.7.14 NMAC. For Multiple Completions: Attach wellbore diagram of proposed completion or recompletion.

LOGOS request to conduct a wellbore isolation for subject well. Rosa Unit 24C is at risk for a catastrophic failure from the nearby Pad 31 completions. In order to preserve wellbore integrity and protect the remaining reserves of the well, it is recommended to isolate the wellbore. See attached procedure.



Wellbore Isolation is approved for 6 months, at which time the wellbore shall be returned to production or other approved disposition.

Spud Date:

Rig Release Date:

I hereby certify that the information above is true and complete to the best of my knowledge and belief.

SIGNATURE Etta Trujillo TITLE Regulatory Specialist DATE 7/11/2023

Type or print name Etta Trujillo E-mail address: etrujillo@logosresourcesllc.com PHONE: 505-258-2936

For State Use Only

APPROVED BY: John Harrison TITLE Petroleum Specilaist DATE 7/13/2023

Conditions of Approval (if any):

LOGOS Operating, LLC
Rosa Unit 024C

PROJECT OBJECTIVE:

The Rosa Unit 024C is at risk for a catastrophic failure from the nearby Pad 31 completions. In order to preserve wellbore integrity and protect the remaining reserves of the well, it is recommended to scan the tubing out of hole, set a composite bridge plug above the Mesaverde perforations, and load the production casing with KCL water.

EQUIPMENT REQUESTED ON LOCATION:

1. Rig pit with 1% KCl with biocide (2.5 gal biocide/80 bbl KCl water)
2. Rig and equipment (pump, pit, etc.)
3. (5) 2-3/8" 4.7# J-55 tubing tag joints
4. 5-1/2" 17# Composite Bridge Plug – Select Oil Tools
5. 4-3/4" string mill
6. 5-1/2" 17# x 2-3/8" packer – Select Oil Tools

PERTINENT DATA:

KB	14'
PBTD	8135'
EOT	7989'
LAST WORKOVER	7/2021 Commingle
LAST TAG	2021- 8110', C/O 8134'
PRODUCTION CASING SPECS	5-1/2", 17#, N-80
TUBING SPECS	2-3/8", 4.7#, J-55

NOTES:

- Prior to the workover, operations needs to recover downhole equipment or set a three-slip stop.
- Rosa Unit 024C is 170' from Rosa Unit 740H lateral.

CONTACTS:

Courtney Peace – Senior Engineering Tech	Dewayne Archibeque Select Oil Tools
Cell (505) 793-3302	Cell (505) 215-2011 Office (505) 564-3770
Catlain Richardson – Production & Completion Engineering Manager	Joey Robinson- Workover Rig Supervisor
Cell (505) 320-3499	Cell (505) 330-2196
Krista McWilliams – VP of Engineering Operations	Jamie Robinson- Workover Rig Supervisor
Cell (505) 419-1627	Cell (505) 320-5590
Duane Bixler – General Manager of Operations	
Cell (505) 635-1663	
Tyler Smith- Operations Manager	Sean Moore- Production Lead
Cell (505) 330-3892	Cell (505) 793-9956

LOGOS Operating, LLC
Rosa Unit 024C

WELLBORE ISOLATION PROCEDURE:

1. Hold safety meeting. MIRU workover rig. Place fire and safety equipment in strategic locations. Comply with all LOGOS, BLM, and NMOCD rules and regulations.
2. Lay flow lines. Check and record casing and tubing pressures. Sell pressure down to line. Kill well as necessary.
3. ND WH. NU BOP.
4. Release tubing and PU (5) joints to tag for fill, EOT at 7989' w/ last tag depth at 8110', C/O to 8135'. Notify engineer of fill depth.
5. Scan out of hole and stand back tubing. Note condition of tubing (presence of paraffin, scale, coal fines, or sand). Note the condition of the SN. If a three-slip stop was set and recovered, return to the operations manager for return to the slickline company.

Current tubing configuration:

NO.	DESCRIPTION
248	2-3/8" 4.7# J-55 tubing joints
1	2-3/8" x 2' pup jt
1	2-3/8" 4.7# J-55 tubing joint
1	1.78" SN
1	1/2 Muleshoe collar w/ exp check

6. Pick up the string mill and tubing and TIH to 4725', top Mesaverde perforation at 4735'. Make additional passes across any tight spots and note any tight spots in the report. Do not enter the perforations with the string mill.
7. TOOH with string mill and tubing, standing tubing back to the derrick.
8. TIH with 5-1/2" CBP and packer on tubing. **Set CBP at ~4695'**. (Note: Set CBP within 50' of Mesaverde top perf at 4735'; see attached CCL with CBL). PUH 10' and set packer. Test CBP to 1000psi. Release packer, TOOH, and LD packer.
9. TIH with tubing as follows, landing tubing at ~4645' (~50' above the CBP). Note tubing landing depth in workover report. Lay down remaining tubing and send to Cave for storage.

NO.	DESCRIPTION
1	1.78" SN
1	2-3/8" 4.7# J-55 tubing joint
1	2-3/8" 4.7# J-55 marker joint (2')
~146	2-3/8" 4.7# J-55 tubing joints

10. Load tubing and production casing with ~85 bbls KCL water and shut in the well.
11. NU WH, RDMO.

LOGOS Operating, LLC
Rosa Unit 024C

RETURN TO PRODUCTION:

1. Hold safety meeting. MIRU workover rig. Place fire and safety equipment in strategic locations. Comply with all LOGOS, BLM, and NMOCD rules and regulations.
2. Lay flow lines. Check and record casing and tubing pressures.
3. ND WH. NU BOP.
4. TOOH standing back tubing.

Current tubing configuration:

NO.	DESCRIPTION
1	1.78" SN
1	2-3/8" 4.7# J-55 tubing joint
1	2-3/8" 4.7# J-55 marker joint (2')
~146	2-3/8" 4.7# J-55 tubing joints

5. Pick up mill and TIH with tubing as follows to ~2000' and utilize an air package to unload the well. Establish circulation w/ +/-500-1500 scfm and wait for pressure to normalize. After circulation has been achieved, begin pumping 1-2 bpm mist rate and unload hole.
6. PU power swivel, TIH to CBP (~4695'), and drill out the CBP. Establish and maintain good circulation and monitor returns while and after drilling out CBP. Continue cleaning out and pushing plug to bottom, short tripping if required, and adding foamer as necessary to carry returns. TOOH, standing back tubing, and LD power swivel and 4-3/4" float valve/bit/mill.
7. Drift in hole with tubing as follows. Land EOT at ~7989'.

NO.	DESCRIPTION
1	1/2 Muleshoe collar w/ exp check
1	1.78" SN
1	2-3/8" 4.7# J-55 tubing joint
1	2-3/8" 4.7# J-55 marker joint (2')
~248	2-3/8" 4.7# J-55 tubing joints

8. ND BOP, NU WH.
9. Unload well with air package.
10. Pump 2-3 bbls of water and drop ball, pressure test to 500psi and pump off expendable check. Record pressure.
11. After check is pumped off, reverse well and unload with air package up the tubing string.
12. **Notify manager that well is ready to be returned to plunger lift operations.**

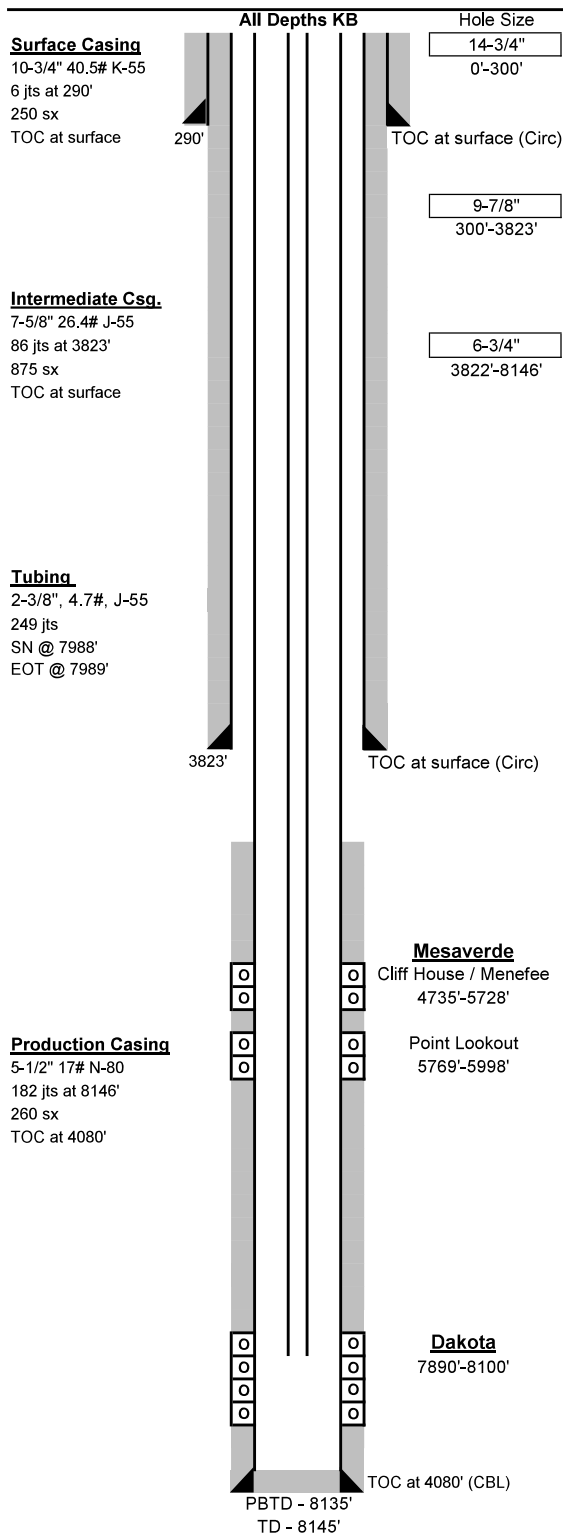
WELL MUST BE PURGED OF OXYGEN PRIOR TO SENDING TO PRODUCTION EQUIPMENT OR TO SALES.



Wellbore Schematic

Well Name: Rosa Unit 24C
 Location: Sec 32, T31N, R05W 210' FNL & 1905' FWL
 County: Rio Arriba
 API #: 30-039-26968
 Co-ordinates: Lat 36.8627319°, -107.388176° NAD 83
 Elevations: GROUND: 6500'
 KB: 6514'
 Depths (KB): PBDT: 8135'
 TD: 8145'

Date Prepared: 12/4/2020 Gomez
 Reviewed by: 12/15/2020 Moss
 Spud Date: 6/26/2002
 Completion Date: 7/26/2002
 Last Workover Date: 7/7/2021
 Last Updated: 7/8/2021 Gomez

**Surface Casing: (6/26/2002)**

Drilled 14-3/4" surface hole to 300'. Ran 6 jts 10-3/4" 40.5# K-55 csg set at 290'.
 Cmt'd w/ 250 sx Type III RMS (350 cf). Circulated 13 bbls of cement to surface.

Intermediate Casing: (7/2/2002)

Drilled 9-7/8" intermediate hole to 3823'. Ran 86 jts 7-5/8" 26.4# J-55 csg set at 3823'.
 Cmt'd lead w/ 620 sx Type III 65/35 poz (1292 cf). Cmt'd tail w/ 255 sx Type III cmt (352 cf).
 Circulated 25 bbls of cement to surface.

Production Casing: (7/3/2002)

Drilled 6-3/4" production hole to 8146'. Ran 182 jts 5-1/2" 17# N-80 csg set at 8146'.
 Cmt'd w/ 30 sx Premium Lite HS (80 cf). Cmt tail w/ 230 sx Premium Lite HS (470 cf).
 TOC at 4080' CBL.

Tubing: (7/7/2021)

	Length (ft)
KB	14
(248) 2-3/8", 4.7#, J-55 tbg jnts	7940
(1) 2-3/8", 4.7#, J-55 tbg marker jt (2')	2
(1) 2-3/8", 4.7#, J-55 tbg jnt	32
(1) 1.78" Seat nipple	1
(1) Expendable check	1

Set at: 7989 ft

Perforations: (7/26/2002)

Dakota: (7890'-8100') 1 SPF, 0.46" dia, 22.12" pen & 19 g charges; Acid 500 gal 15% HCl.

7890', 82', 87', 7992', 95', 8028', 32', 34', 38', 41', 45', 62', 65', 68', 74', 8100'.

Frac w/ 4500# 100 mesh ahead, 85,240# 20/40 Ottawa sand, 5240# FLEX sand in 20Q foam.

Mesaverde: Point Lookout- (5769'-5998') 1 SPF, 0.33" dia, 16.76" pen & 10 g charges.

5769', 73', 89', 92', 96', 5800', 5', 7', 13', 16', 22', 26', 33', 43', 47', 50', 54', 58', 76', 80', 5900', 17', 44', 80', 98'. Acidize w/ 1000 gal 15% HCl. Frac w/ 81,000# 20/40 AZ sand in 1921 bbls FW.

Mesaverde: Cliff House/ Menefee- (4735'-5728') 1 SPF 0.33" dia, 16.8" pen & 10 g charges.

4735', 4839', 46', 5080', 84', 5293', 5311', 5425', 79', 88', 5528', 32', 56', 83', 86', 88', 92', 5654', 58', 63', 67', 69', 73', 77', 5707', 10', 13', 28'. Acidize w/ 1000 gal 15% HCl.

Frac w/ 79,000# 20/40 AZ sand in 1851 bbl FW.

Formations:

Ojo Alamo-	2642'	Gallup-	7097'
Kirtland-	2762'	Dakota-	7977'
Pictured Cliffs-	3352'		
Lewis-	3642'		
Cliff House-	5509'		
Menefee-	5558'		
Point Lookout-	5787'		
Mancos-	6127'		

Additional Notes:

2008- Mesaverde tubing repair. Bottom 12 joints full of frac sand. Tagged sand at 5900' sand running.

Cleaned out to 6085', 20' fill overnight, clean out to 6085'. Land tubing.

7/7/2021- Commingle DK and MV production zones. Heavy sand in the MV above the packer.

Tagged 25' of fill in DK (likely contributed to by the MV sand falling through DK tubing string). Cleaned out to 8134'. Ran a single 2-3/8" tbg string, landed at 7989'.

Max deviation 1 degree.

District I
1625 N. French Dr., Hobbs, NM 88240
Phone:(575) 393-6161 Fax:(575) 393-0720
District II
811 S. First St., Artesia, NM 88210
Phone:(575) 748-1283 Fax:(575) 748-9720
District III
1000 Rio Brazos Rd., Aztec, NM 87410
Phone:(505) 334-6178 Fax:(505) 334-6170
District IV
1220 S. St Francis Dr., Santa Fe, NM 87505
Phone:(505) 476-3470 Fax:(505) 476-3462

State of New Mexico
Energy, Minerals and Natural Resources
Oil Conservation Division
1220 S. St Francis Dr.
Santa Fe, NM 87505

CONDITIONS

Action 238337

CONDITIONS

Operator: LOGOS OPERATING, LLC 2010 Afton Place Farmington, NM 87401	OGRID: 289408
	Action Number: 238337
	Action Type: [C-103] NOI General Sundry (C-103X)

CONDITIONS

Created By	Condition	Condition Date
john.harrison	Approved w/ conditions	7/13/2023