

State of New Mexico
Energy Minerals and Natural Resources
Department
Oil Conservation Division
1220 South St. Francis Dr.
Santa Fe, NM 87505

Form C-144
Revised 2022

Pit, Below-Grade Tank, or
Proposed Alternative Method Permit or Closure Plan Application

Type of action: ☐ Below grade tank registration
☐ Permit of a pit or proposed alternative method
☐ Closure of a pit, below-grade tank, or proposed alternative method
☒ Modification to an existing permit/or registration
☐ Closure plan only submitted for an existing permitted or non-permitted pit, below-grade tank, or proposed alternative method

BGT1 Modification

Instructions: Please submit one application (Form C-144) per individual pit, below-grade tank or alternative request

Please be advised that approval of this request does not relieve the operator of liability should operations result in pollution of surface water, ground water or the environment. Nor does approval relieve the operator of its responsibility to comply with any other applicable governmental authority's rules, regulations, or ordinances.

1.

Operator: LOGOS Operating, LLC OGRID #: 289408

Address: 2010 Afton Place, Farmington, NM 87401

Facility or well name: ROSA UNIT #001 SWD

API Number: 30-039-27055 OCD Permit Number: _____

U/L or Qtr/Qtr I Section 23 Township 31N Range 6W County: Rio Arriba

Center of Proposed Design: Latitude 36.8845329 Longitude -107.4272766 NAD83

Surface Owner: ☒ Federal ☐ State ☐ Private ☐ Tribal Trust or Indian Allotment

2.

☐ **Pit:** Subsection F, G or J of 19.15.17.11 NMAC

Temporary: ☐ Drilling ☐ Workover

☐ Permanent ☐ Emergency ☐ Cavitation ☐ P&A ☐ Multi-Well Fluid Management Low Chloride Drilling Fluid ☐ yes ☐ no

☐ Lined ☐ Unlined Liner type: Thickness _____ mil ☐ LLDPE ☐ HDPE ☐ PVC ☐ Other _____

☐ String-Reinforced

Liner Seams: ☐ Welded ☐ Factory ☐ Other _____ Volume: _____ bbl Dimensions: L _____ x W _____ x D _____

3.

☒ **Below-grade tank:** Subsection I of 19.15.17.11 NMAC

Volume: 120 bbl Type of fluid: Produced Water

Tank Construction material: Double Wall Steel

☒ Secondary containment with leak detection ☐ Visible sidewalls, liner, 6-inch lift and automatic overflow shut-off

☐ Visible sidewalls and liner ☐ Visible sidewalls only ☐ Other _____

Liner type: Thickness _____ mil ☐ HDPE ☐ PVC ☐ Other _____

4.

☐ **Alternative Method:**

Submittal of an exception request is required. Exceptions must be submitted to the Santa Fe Environmental Bureau office for consideration of approval.

5.

Fencing: Subsection D of 19.15.17.11 NMAC (*Applies to permanent pits, temporary pits, and below-grade tanks*)

☐ Chain link, six feet in height, two strands of barbed wire at top (*Required if located within 1000 feet of a permanent residence, school, hospital, institution or church*)

☒ Four foot height, four strands of barbed wire evenly spaced between one and four feet

☐ Alternate. Please specify _____

6.

Netting: Subsection E of 19.15.17.11 NMAC (*Applies to permanent pits and permanent open top tanks*)

- ☒ Screen ☐ Netting ☐ Other _____
- ☐ Monthly inspections (If netting or screening is not physically feasible)

7.

Signs: Subsection C of 19.15.17.11 NMAC

- ☐ 12"x 24", 2" lettering, providing Operator's name, site location, and emergency telephone numbers
- ☒ Signed in compliance with 19.15.16.8 NMAC

8.

Variations and Exceptions:

Justifications and/or demonstrations of equivalency are required. Please refer to 19.15.17 NMAC for guidance.

Please check a box if one or more of the following is requested, if not leave blank:

- ☒ Variance(s): Requests must be submitted to the appropriate division district for consideration of approval.
- ☐ Exception(s): Requests must be submitted to the Santa Fe Environmental Bureau office for consideration of approval.

9.

Siting Criteria (regarding permitting): 19.15.17.10 NMAC***Instructions: The applicant must demonstrate compliance for each siting criteria below in the application. Recommendations of acceptable source material are provided below. Siting criteria does not apply to drying pads or above-grade tanks.*****General siting****Ground water is less than 25 feet below the bottom of a low chloride temporary pit or below-grade tank.**

- ☒ NM Office of the State Engineer - iWATERS database search; ☐ USGS; ☒ Data obtained from nearby wells

☐ Yes ☒ No

☐ NA

Ground water is less than 50 feet below the bottom of a Temporary pit, permanent pit, or Multi-Well Fluid Management pit.

NM Office of the State Engineer - iWATERS database search; USGS; Data obtained from nearby wells

☐ Yes ☐ No

☐ NA

Within incorporated municipal boundaries or within a defined municipal fresh water well field covered under a municipal ordinance adopted pursuant to NMSA 1978, Section 3-27-3, as amended. **(Does not apply to below grade tanks)**

- Written confirmation or verification from the municipality; Written approval obtained from the municipality

☐ Yes ☐ No

Within the area overlying a subsurface mine. **(Does not apply to below grade tanks)**

- Written confirmation or verification or map from the NM EMNRD-Mining and Mineral Division

☐ Yes ☐ No

Within an unstable area. **(Does not apply to below grade tanks)**

- Engineering measures incorporated into the design; NM Bureau of Geology & Mineral Resources; USGS; NM Geological Society; Topographic map

☐ Yes ☐ No

Within a 100-year floodplain. **(Does not apply to below grade tanks)**

- FEMA map

☐ Yes ☐ No

Below Grade Tanks

Within 100 feet of a continuously flowing watercourse, significant watercourse, lake bed, sinkhole, wetland or playa lake (measured from the ordinary high-water mark).

- Topographic map; Visual inspection (certification) of the proposed site

☐ Yes ☒ No

Within 200 horizontal feet of a spring or a fresh water well used for public or livestock consumption;.

- NM Office of the State Engineer - iWATERS database search; Visual inspection (certification) of the proposed site

☐ Yes ☒ No

Temporary Pit using Low Chloride Drilling Fluid (maximum chloride content 15,000 mg/liter)

Within 100 feet of a continuously flowing watercourse, or any other significant watercourse or within 200 feet of any lakebed, sinkhole, or playa lake (measured from the ordinary high-water mark). (Applies to low chloride temporary pits.)

- Topographic map; Visual inspection (certification) of the proposed site

☐ Yes ☐ No

Within 300 feet from a occupied permanent residence, school, hospital, institution, or church in existence at the time of initial application.

- Visual inspection (certification) of the proposed site; Aerial photo; Satellite image

☐ Yes ☐ No

Within 200 horizontal feet of a spring or a private, domestic fresh water well used by less than five households for domestic or stock watering purposes, or 300feet of any other fresh water well or spring, in existence at the time of the initial application.

NM Office of the State Engineer - iWATERS database search; Visual inspection (certification) of the proposed site

☐ Yes ☐ No

Within 100 feet of a wetland.

- US Fish and Wildlife Wetland Identification map; Topographic map; Visual inspection (certification) of the proposed site

☐ Yes ☐ No

Temporary Pit Non-low chloride drilling fluid

Within 300 feet of a continuously flowing watercourse, or any other significant watercourse, or within 200 feet of any lakebed, sinkhole, or playa lake (measured from the ordinary high-water mark).

- Topographic map; Visual inspection (certification) of the proposed site

☐ Yes ☐ No

Within 300 feet from a permanent residence, school, hospital, institution, or church in existence at the time of initial application.

- Visual inspection (certification) of the proposed site; Aerial photo; Satellite image

☐ Yes ☐ No

Within 500 horizontal feet of a spring or a private, domestic fresh water well used by less than five households for domestic or stock watering purposes, or 1000 feet of any other fresh water well or spring, in the existence at the time of the initial application;

- NM Office of the State Engineer - iWATERS database search; Visual inspection (certification) of the proposed site

☐ Yes ☐ No

Within 300 feet of a wetland.

- US Fish and Wildlife Wetland Identification map; Topographic map; Visual inspection (certification) of the proposed site

☐ Yes ☐ No

Permanent Pit or Multi-Well Fluid Management Pit

Within 300 feet of a continuously flowing watercourse, or 200 feet of any other significant watercourse, or lakebed, sinkhole, or playa lake (measured from the ordinary high-water mark).

- Topographic map; Visual inspection (certification) of the proposed site

☐ Yes ☐ No

Within 1000 feet from a permanent residence, school, hospital, institution, or church in existence at the time of initial application.

- Visual inspection (certification) of the proposed site; Aerial photo; Satellite image

☐ Yes ☐ No

Within 500 horizontal feet of a spring or a fresh water well used for domestic or stock watering purposes, in existence at the time of initial application.

- NM Office of the State Engineer - iWATERS database search; Visual inspection (certification) of the proposed site

☐ Yes ☐ No

Within 500 feet of a wetland.

- US Fish and Wildlife Wetland Identification map; Topographic map; Visual inspection (certification) of the proposed site

☐ Yes ☐ No

10.

Temporary Pits, Emergency Pits, and Below-grade Tanks Permit Application Attachment Checklist: Subsection B of 19.15.17.9 NMAC

Instructions: Each of the following items must be attached to the application. Please indicate, by a check mark in the box, that the documents are attached.

- ☒ Hydrogeologic Report (Below-grade Tanks) - based upon the requirements of Paragraph (4) of Subsection B of 19.15.17.9 NMAC
- ☐ Hydrogeologic Data (Temporary and Emergency Pits) - based upon the requirements of Paragraph (2) of Subsection B of 19.15.17.9 NMAC
- ☒ Siting Criteria Compliance Demonstrations - based upon the appropriate requirements of 19.15.17.10 NMAC
- ☒ Design Plan - based upon the appropriate requirements of 19.15.17.11 NMAC
- ☒ Operating and Maintenance Plan - based upon the appropriate requirements of 19.15.17.12 NMAC
- ☒ Closure Plan (Please complete Boxes 14 through 18, if applicable) - based upon the appropriate requirements of Subsection C of 19.15.17.9 NMAC and 19.15.17.13 NMAC

☐ Previously Approved Design (attach copy of design) API Number: _____ or Permit Number: _____

11.

Multi-Well Fluid Management Pit Checklist: Subsection B of 19.15.17.9 NMAC

Instructions: Each of the following items must be attached to the application. Please indicate, by a check mark in the box, that the documents are attached.

- ☐ Design Plan - based upon the appropriate requirements of 19.15.17.11 NMAC
- ☐ Operating and Maintenance Plan - based upon the appropriate requirements of 19.15.17.12 NMAC
- ☐ A List of wells with approved application for permit to drill associated with the pit.
- ☐ Closure Plan (Please complete Boxes 14 through 18, if applicable) - based upon the appropriate requirements of Subsection C of 19.15.17.9 NMAC and 19.15.17.13 NMAC
- ☐ Hydrogeologic Data - based upon the requirements of Paragraph (4) of Subsection B of 19.15.17.9 NMAC
- ☐ Siting Criteria Compliance Demonstrations - based upon the appropriate requirements of 19.15.17.10 NMAC

☐ Previously Approved Design (attach copy of design) API Number: _____ or Permit Number: _____

12.

Permanent Pits Permit Application Checklist: Subsection B of 19.15.17.9 NMAC**Instructions:** Each of the following items must be attached to the application. Please indicate, by a check mark in the box, that the documents are attached.

- ☐ Hydrogeologic Report - based upon the requirements of Paragraph (1) of Subsection B of 19.15.17.9 NMAC
☐ Siting Criteria Compliance Demonstrations - based upon the appropriate requirements of 19.15.17.10 NMAC
☐ Climatological Factors Assessment
☐ Certified Engineering Design Plans - based upon the appropriate requirements of 19.15.17.11 NMAC
☐ Dike Protection and Structural Integrity Design - based upon the appropriate requirements of 19.15.17.11 NMAC
☐ Leak Detection Design - based upon the appropriate requirements of 19.15.17.11 NMAC
☐ Liner Specifications and Compatibility Assessment - based upon the appropriate requirements of 19.15.17.11 NMAC
☐ Quality Control/Quality Assurance Construction and Installation Plan
☐ Operating and Maintenance Plan - based upon the appropriate requirements of 19.15.17.12 NMAC
☐ Freeboard and Overtopping Prevention Plan - based upon the appropriate requirements of 19.15.17.11 NMAC
☐ Nuisance or Hazardous Odors, including H₂S, Prevention Plan
☐ Emergency Response Plan
☐ Oil Field Waste Stream Characterization
☐ Monitoring and Inspection Plan
☐ Erosion Control Plan
☐ Closure Plan - based upon the appropriate requirements of Subsection C of 19.15.17.9 NMAC and 19.15.17.13 NMAC

13.

Proposed Closure: 19.15.17.13 NMAC**Instructions:** Please complete the applicable boxes, Boxes 14 through 18, in regards to the proposed closure plan.

- Type: ☐ Drilling ☐ Workover ☐ Emergency ☐ Cavitation ☐ P&A ☐ Permanent Pit ☒ Below-grade Tank ☐ Multi-well Fluid Management Pit
☐ Alternative
- Proposed Closure Method: ☒ Waste Excavation and Removal
☐ Waste Removal (Closed-loop systems only)
☐ On-site Closure Method (Only for temporary pits and closed-loop systems)
☐ In-place Burial ☐ On-site Trench Burial
☐ Alternative Closure Method

14.

Waste Excavation and Removal Closure Plan Checklist: (19.15.17.13 NMAC) **Instructions:** Each of the following items must be attached to the closure plan. Please indicate, by a check mark in the box, that the documents are attached.

- ☒ Protocols and Procedures - based upon the appropriate requirements of 19.15.17.13 NMAC
☒ Confirmation Sampling Plan (if applicable) - based upon the appropriate requirements of Subsection C of 19.15.17.13 NMAC
☒ Disposal Facility Name and Permit Number (for liquids, drilling fluids and drill cuttings)
☒ Soil Backfill and Cover Design Specifications - based upon the appropriate requirements of Subsection H of 19.15.17.13 NMAC
☒ Re-vegetation Plan - based upon the appropriate requirements of Subsection H of 19.15.17.13 NMAC
☒ Site Reclamation Plan - based upon the appropriate requirements of Subsection H of 19.15.17.13 NMAC

15.

Siting Criteria (regarding on-site closure methods only): 19.15.17.10 NMAC**Instructions:** Each siting criteria requires a demonstration of compliance in the closure plan. Recommendations of acceptable source material are provided below. Requests regarding changes to certain siting criteria require justifications and/or demonstrations of equivalency. Please refer to 19.15.17.10 NMAC for guidance.

Ground water is less than 25 feet below the bottom of the buried waste. - NM Office of the State Engineer - iWATERS database search; USGS; Data obtained from nearby wells	<input type="checkbox"/> Yes <input type="checkbox"/> No <input type="checkbox"/> NA
Ground water is between 25-50 feet below the bottom of the buried waste - NM Office of the State Engineer - iWATERS database search; USGS; Data obtained from nearby wells	<input type="checkbox"/> Yes <input type="checkbox"/> No <input type="checkbox"/> NA
Ground water is more than 100 feet below the bottom of the buried waste. - NM Office of the State Engineer - iWATERS database search; USGS; Data obtained from nearby wells	<input type="checkbox"/> Yes <input type="checkbox"/> No <input type="checkbox"/> NA
Within 100 feet of a continuously flowing watercourse, or 200 feet of any other significant watercourse, lakebed, sinkhole, or playa lake (measured from the ordinary high-water mark). - Topographic map; Visual inspection (certification) of the proposed site	<input type="checkbox"/> Yes <input checked="" type="checkbox"/> No
Within 300 feet from a permanent residence, school, hospital, institution, or church in existence at the time of initial application. - Visual inspection (certification) of the proposed site; Aerial photo; Satellite image	<input type="checkbox"/> Yes <input checked="" type="checkbox"/> No
Within 300 horizontal feet of a private, domestic fresh water well or spring used for domestic or stock watering purposes, in existence at the time of initial application. - NM Office of the State Engineer - iWATERS database; Visual inspection (certification) of the proposed site	<input type="checkbox"/> Yes <input checked="" type="checkbox"/> No
Written confirmation or verification from the municipality; Written approval obtained from the municipality	<input type="checkbox"/> Yes <input checked="" type="checkbox"/> No
Within 300 feet of a wetland. US Fish and Wildlife Wetland Identification map; Topographic map; Visual inspection (certification) of the proposed site	<input type="checkbox"/> Yes <input checked="" type="checkbox"/> No
Within incorporated municipal boundaries or within a defined municipal fresh water well field covered under a municipal ordinance	

adopted pursuant to NMSA 1978, Section 3-27-3, as amended.

- Written confirmation or verification from the municipality; Written approval obtained from the municipality

☐ Yes ☒ No

Within the area overlying a subsurface mine.

- Written confirmation or verification or map from the NM EMNRD-Mining and Mineral Division

☐ Yes ☒ No

Within an unstable area.

- Engineering measures incorporated into the design; NM Bureau of Geology & Mineral Resources; USGS; NM Geological Society; Topographic map

☐ Yes ☒ No

Within a 100-year floodplain.

- FEMA map

☐ Yes ☒ No

16.

On-Site Closure Plan Checklist: (19.15.17.13 NMAC) *Instructions: Each of the following items must be attached to the closure plan. Please indicate, by a check mark in the box, that the documents are attached.*

- ☐ Siting Criteria Compliance Demonstrations - based upon the appropriate requirements of 19.15.17.10 NMAC
- ☐ Proof of Surface Owner Notice - based upon the appropriate requirements of Subsection E of 19.15.17.13 NMAC
- ☐ Construction/Design Plan of Burial Trench (if applicable) based upon the appropriate requirements of Subsection K of 19.15.17.11 NMAC
- ☐ Construction/Design Plan of Temporary Pit (for in-place burial of a drying pad) - based upon the appropriate requirements of 19.15.17.11 NMAC
- ☐ Protocols and Procedures - based upon the appropriate requirements of 19.15.17.13 NMAC
- ☐ Confirmation Sampling Plan (if applicable) - based upon the appropriate requirements of 19.15.17.13 NMAC
- ☐ Waste Material Sampling Plan - based upon the appropriate requirements of 19.15.17.13 NMAC
- ☐ Disposal Facility Name and Permit Number (for liquids, drilling fluids and drill cuttings or in case on-site closure standards cannot be achieved)
- ☐ Soil Cover Design - based upon the appropriate requirements of Subsection H of 19.15.17.13 NMAC
- ☐ Re-vegetation Plan - based upon the appropriate requirements of Subsection H of 19.15.17.13 NMAC
- ☐ Site Reclamation Plan - based upon the appropriate requirements of Subsection H of 19.15.17.13 NMAC

17.

Operator Application Certification:

I hereby certify that the information submitted with this application is true, accurate and complete to the best of my knowledge and belief.

Name (Print): Vanessa Fields Title: Regulatory Manager

Signature: Vanessa Fields Date: 7/28/2023

e-mail address: vfields@logosresourcesllc.com Telephone: 505-320-1243

18.

Modification

OCD Approval: ☒ Permit Application (including closure plan) ☐ Closure Plan (only) ☐ OCD Conditions (see attachment)

OCD Representative Signature: Shelly Wells **Approval Date:** 8/2/2023

Title: Environmental Specialist-Advanced **OCD Permit Number:** BGT1 Modification

19.

Closure Report (required within 60 days of closure completion): 19.15.17.13 NMAC

Instructions: Operators are required to obtain an approved closure plan prior to implementing any closure activities and submitting the closure report. The closure report is required to be submitted to the division within 60 days of the completion of the closure activities. Please do not complete this section of the form until an approved closure plan has been obtained and the closure activities have been completed.

☐ **Closure Completion Date:** _____

20.

Closure Method:

- ☐ Waste Excavation and Removal ☐ On-Site Closure Method ☐ Alternative Closure Method ☐ Waste Removal (Closed-loop systems only)
- ☐ If different from approved plan, please explain.

21.

Closure Report Attachment Checklist: *Instructions: Each of the following items must be attached to the closure report. Please indicate, by a check mark in the box, that the documents are attached.*

- ☐ Proof of Closure Notice (surface owner and division)
- ☐ Proof of Deed Notice (required for on-site closure for private land only)
- ☐ Plot Plan (for on-site closures and temporary pits)
- ☐ Confirmation Sampling Analytical Results (if applicable)
- ☐ Waste Material Sampling Analytical Results (required for on-site closure)
- ☐ Disposal Facility Name and Permit Number
- ☐ Soil Backfilling and Cover Installation
- ☐ Re-vegetation Application Rates and Seeding Technique
- ☐ Site Reclamation (Photo Documentation)

On-site Closure Location: Latitude _____ Longitude _____ NAD: ☐ 1927 ☐ 1983

22.

Operator Closure Certification:

I hereby certify that the information and attachments submitted with this closure report is true, accurate and complete to the best of my knowledge and belief. I also certify that the closure complies with all applicable closure requirements and conditions specified in the approved closure plan.

Name (Print): _____ Title: _____

Signature: _____ Date: _____

e-mail address: _____ Telephone: _____



Logos Operating Hydrogeological Report Rosa Unit #001 SWD

Referenced Well Location:

The referenced well and pit is located on Bureau of Land Management land within the Farmington Field Office jurisdiction in Rio Arriba County, New Mexico. The referenced site is positioned in the northeastern portion of the San Juan Basin, an asymmetrical syncline that extends from the northwestern New Mexico into southwestern Colorado. (Carson National Forest DEIS, 2007). The elevation of the referenced well is approximately 6243 feet MSL.

General Regional Groundwater Description:

As a portion of the San Juan Basin, this region is underlain by sandstone aquifers of the Colorado Plateau. The primary aquifer of potential concern at this location is the Unita-Animas Aquifer, composed primarily of Lower Tertiary rocks in the San Juan Basin. The aquifer consists of the San Jose Formation; the underlying Animas formation and its lateral equivalent, the Nacimiento formation; and the Ojo Alamo Sandstone. The thickness of the Unita-Animas aquifer generally increases toward the central part of the basin. In the northeastern part of the San Juan Basin, the maximum thickness of the aquifer is approximately 3500 feet (USFS, 2001). This aquifer contains fresh to moderate saline water.

Groundwater generally flows toward the San Juan River and its tributaries, where it becomes alluvial groundwater or is discharged to stream flow. Additional information regarding the Hydrogeologic setting can be found in the provided references.

Site Specific information:

Surface Hydrology:

The pit is in uplands on a western slope, draining towards Laguna Seca Draw. There is no drainage within 300 feet of the below grade pit.

1st Water Bearing Formation

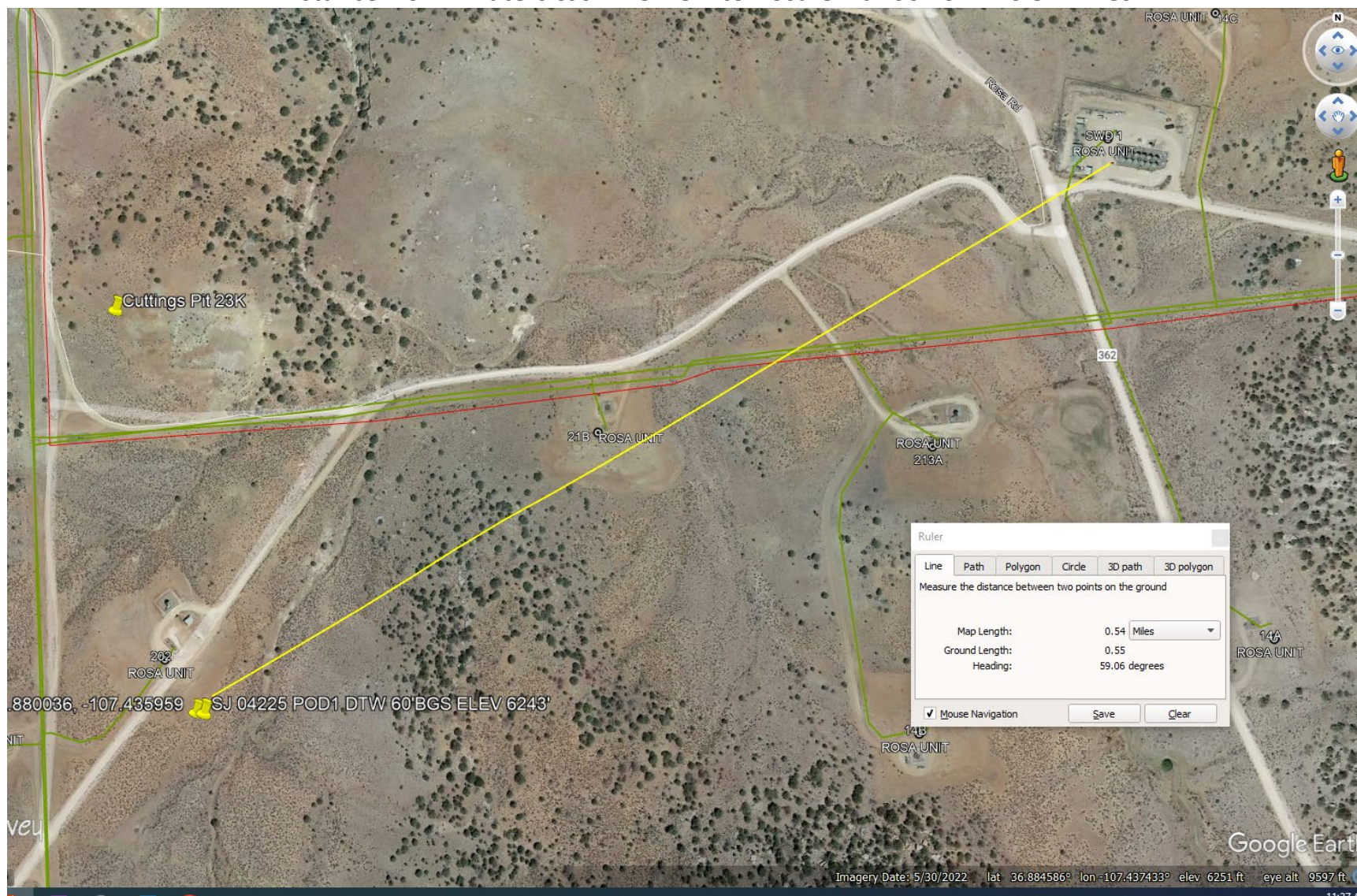
San Jose, Tertiary at 1,900ft.

Depth to Groundwater:

Depth to groundwater is estimated to be at 76' below ground surface. Based on the elevation of the Rosa Unit #001 SWD 6259' and waters SJ04225 POD1 well of elevation at 6243' and a reported depth to groundwater at 60' with the elevation change the estimated groundwater is at 76'. SJ04225 POS 1 well is approximately 0.54 miles away from the Rosa Unit #001 SWD.

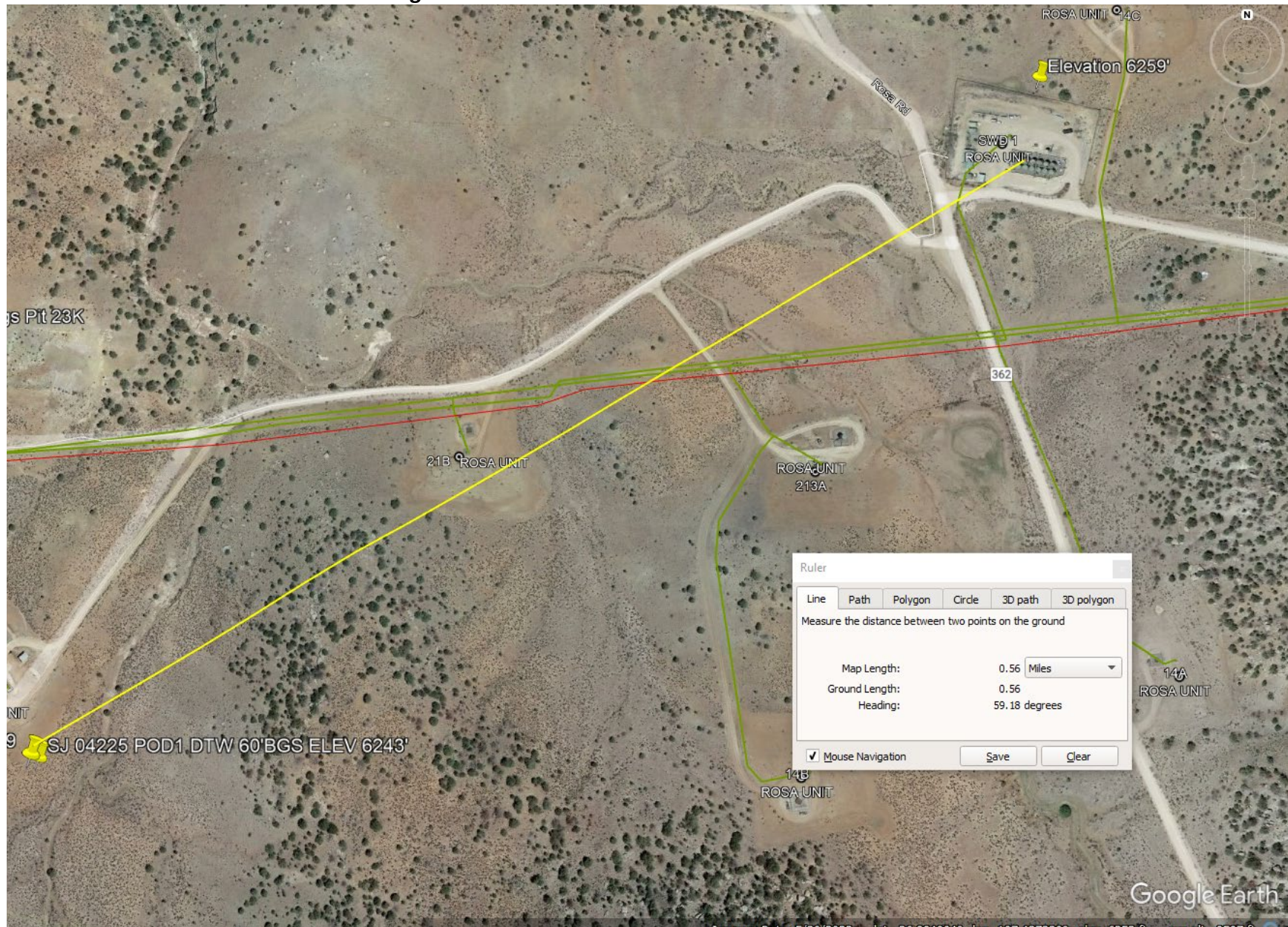


Distance from I waters SJ04225 POD to Rosa Unit #001 SWD 0.54 miles.





Elevation Change between SJ 04225 POD 1 & Rosa Unit #001 SWD 16 feet.





New Mexico Office of the State Engineer

Water Column/Average Depth to Water

(A CLW##### in the POD suffix indicates the POD has been replaced & no longer serves a water right file.)

(R=POD has been replaced,
O=orphaned,
C=the file is closed)

(quarters are 1=NW 2=NE 3=SW 4=SE)

(quarters are smallest to largest)

(NAD83 UTM in meters)

(In feet)

POD Number	Code	POD Sub-basin	County	Q 64	Q 16	Q 4	Sec	Tws	Rng	X	Y	DepthWell	DepthWater	Water Column
SJ 04225 POD1		SJ	RA	4	3	23	31N	06W		282900	4084335	320	60	260

Average Depth to Water: **60 feet**

Minimum Depth: **60 feet**

Maximum Depth: **60 feet**

Record Count: 1

PLSS Search:

Section(s): 23

Township: 31N

Range: 06W

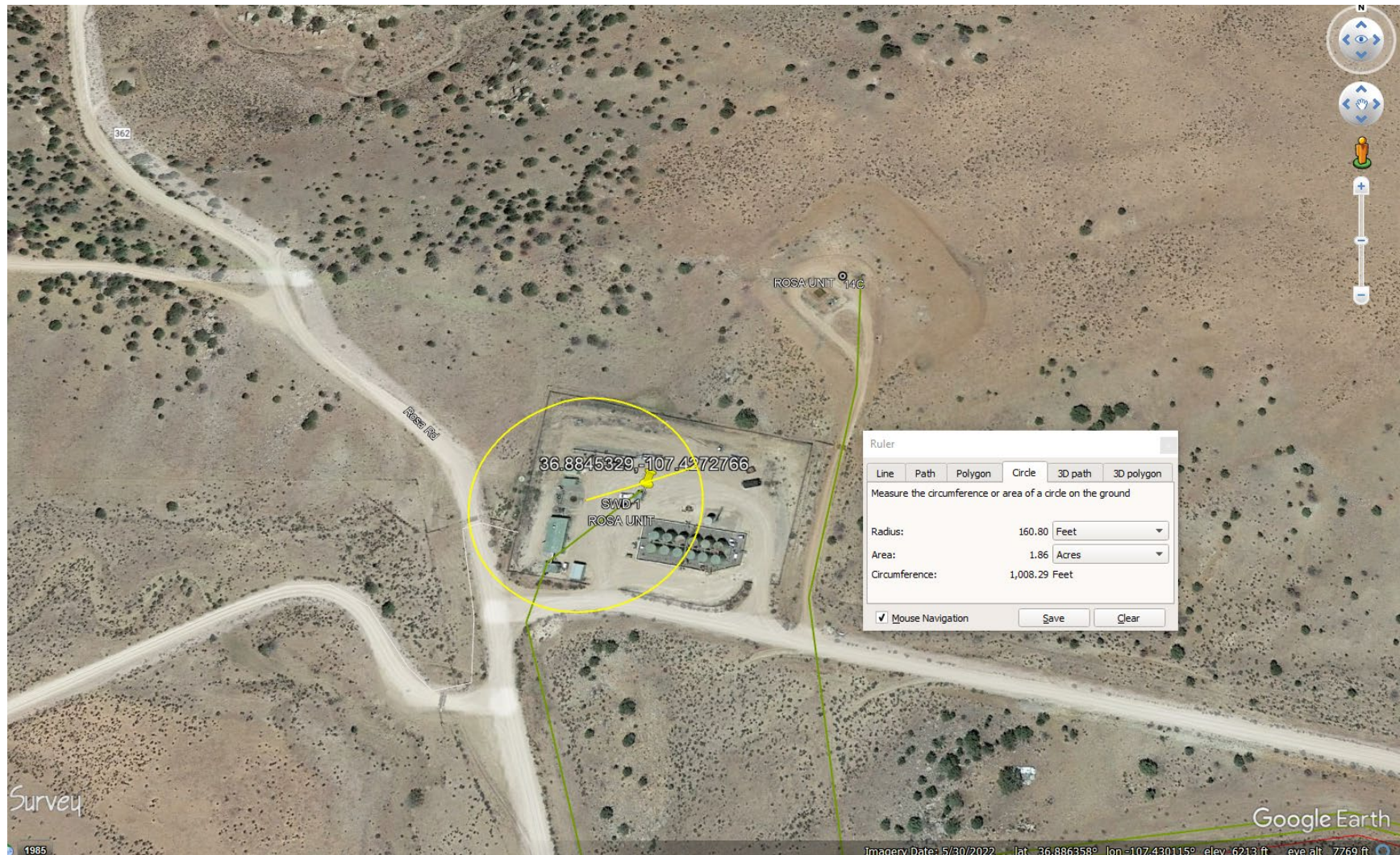
The data is furnished by the NMOSE/ISC and is accepted by the recipient with the expressed understanding that the OSE/ISC make no warranties, expressed or implied, concerning the accuracy, completeness, reliability, usability, or suitability for any particular purpose of the data.

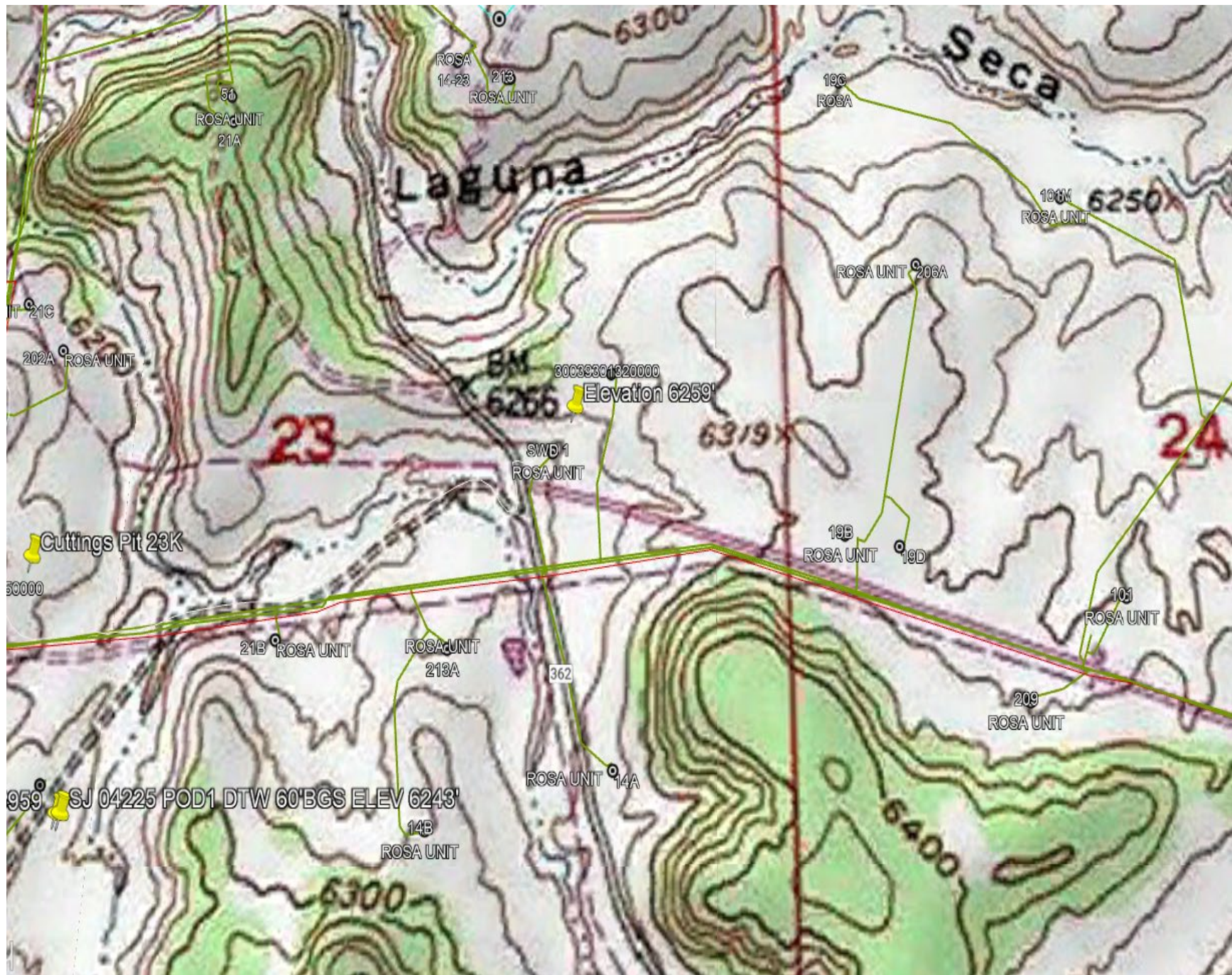
7/28/23 11:17 AM

WATER COLUMN/ AVERAGE DEPTH TO WATER

30-039-27055 ROSA UNIT SWD #001

Sitting Criteria 100' Radius





National Flood Hazard Layer FIRMette



107°25'57"W 36°53'19"N



0 250 500 1,000 1,500 2,000 Feet

1:6,000

Basemap Imagery Source: USGS National Map 2023

Legend

SEE FIS REPORT FOR DETAILED LEGEND AND INDEX MAP FOR FIRM PANEL LAYOUT

SPECIAL FLOOD HAZARD AREAS		Without Base Flood Elevation (BFE) Zone A, V, A99
		With BFE or Depth Zone AE, AO, AH, VE, AR
		Regulatory Floodway
OTHER AREAS OF FLOOD HAZARD		0.2% Annual Chance Flood Hazard, Areas of 1% annual chance flood with average depth less than one foot or with drainage areas of less than one square mile Zone X
		Future Conditions 1% Annual Chance Flood Hazard Zone X
		Area with Reduced Flood Risk due to Levee. See Notes. Zone X
		Area with Flood Risk due to Levee Zone D
OTHER AREAS		NO SCREEN Area of Minimal Flood Hazard Zone X
		Effective LOMRs
		Area of Undetermined Flood Hazard Zone D
GENERAL STRUCTURES		Channel, Culvert, or Storm Sewer
		Levee, Dike, or Floodwall
OTHER FEATURES		Cross Sections with 1% Annual Chance Water Surface Elevation
		Coastal Transect
		Base Flood Elevation Line (BFE)
		Limit of Study
		Jurisdiction Boundary
		Coastal Transect Baseline
MAP PANELS		Profile Baseline
		Hydrographic Feature
		Digital Data Available
		No Digital Data Available
		Unmapped



The pin displayed on the map is an approximate point selected by the user and does not represent an authoritative property location.

This map complies with FEMA's standards for the use of digital flood maps if it is not void as described below. The basemap shown complies with FEMA's basemap accuracy standards.

The flood hazard information is derived directly from the authoritative NFHL web services provided by FEMA. This map was exported on 7/28/2023 at 3:15 PM and does not reflect changes or amendments subsequent to this date and time. The NFHL and effective information may change or become superseded by new data over time.

This map image is void if the one or more of the following map elements do not appear: basemap imagery, flood zone labels, legend, scale bar, map creation date, community identifiers, FIRM panel number, and FIRM effective date. Map images for unmapped and unmodernized areas cannot be used for regulatory purposes.

Active Mines in New Mexico



7/28/2023, 1:45:26 PM

Land Ownership



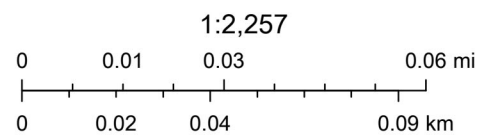
BLM



PLSS Second Division



PLSS First Division

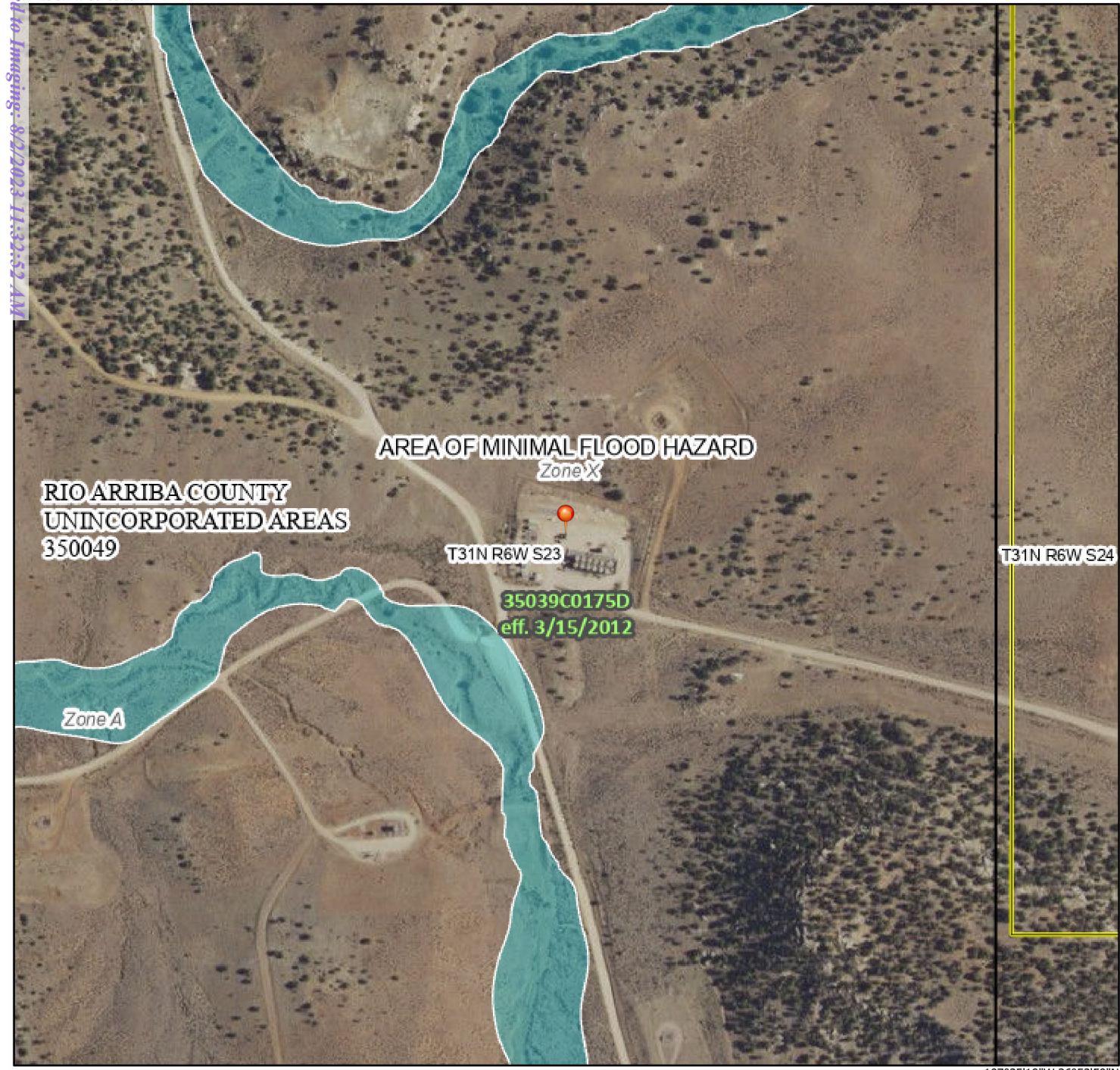


U.S. BLM, Sources: Esri, Airbus DS, USGS, NGA, NASA, CGIAR, N Robinson, NCEAS, NLS, OS, NMA, Geodatastyrelsen, Rijkswaterstaat, GSA, Geoland, FEMA, Intermap and the GIS user community, Esri Community Maps Contributors, San Juan County, NM, © OpenStreetMap, Microsoft, Esri,

National Flood Hazard Layer FIRMMette



107°25'57"W 36°53'19"N



Legend

SEE FIS REPORT FOR DETAILED LEGEND AND INDEX MAP FOR FIRM PANEL LAYOUT

SPECIAL FLOOD HAZARD AREAS		Without Base Flood Elevation (BFE) Zone A, V, A99
		With BFE or Depth Zone AE, AO, AH, VE, AR
		Regulatory Floodway
OTHER AREAS OF FLOOD HAZARD		0.2% Annual Chance Flood Hazard, Areas of 1% annual chance flood with average depth less than one foot or with drainage areas of less than one square mile
		Future Conditions 1% Annual Chance Flood Hazard Zone X
		Area with Reduced Flood Risk due to Levee. See Notes. Zone X
		Area with Flood Risk due to Levee
OTHER AREAS		NO SCREEN Area of Minimal Flood Hazard Zone X
		Effective LOMRs
GENERAL STRUCTURES		Area of Undetermined Flood Hazard Zone D
		Channel, Culvert, or Storm Sewer
		Levee, Dike, or Floodwall
		20.2 Cross Sections with 1% Annual Chance Water Surface Elevation
OTHER FEATURES		17.5 Coastal Transect
		Base Flood Elevation Line (BFE)
		Limit of Study
		Jurisdiction Boundary
		Coastal Transect Baseline
MAP PANELS		Profile Baseline
		Hydrographic Feature
		Digital Data Available
		No Digital Data Available
		Unmapped
		The pin displayed on the map is an approximate point selected by the user and does not represent an authoritative property location.

This map complies with FEMA's standards for the use of digital flood maps if it is not void as described below. The basemap shown complies with FEMA's basemap accuracy standards

The flood hazard information is derived directly from the authoritative NFHL web services provided by FEMA. This map was exported on 7/28/2023 at 3:15 PM and does not reflect changes or amendments subsequent to this date and time. The NFHL and effective information may change or become superseded by new data over time.

This map image is void if the one or more of the following map elements do not appear: basemap imagery, flood zone labels, legend, scale bar, map creation date, community identifiers, FIRM panel number, and FIRM effective date. Map images for unmapped and unmodernized areas cannot be used for regulatory purposes.

Released to Imaging: 8/2/2023 11:32:52 AM

Received by OCD: 7/28/2023 2:21:35 PM

RUFECO® 2000B, 3000B & 4000B

Properties	Test Method	RUFECO 2000B		RUFECO 3000B		RUFECO 4000B	
		Min. Roll Averages	Typical Roll Averages	Min. Roll Averages	Typical Roll Averages	Min. Roll Averages	Typical Roll Averages
Thickness mils (mm)	ASTM D 5199	20.0 (0.50)	21.0 (0.53)	30.0 (0.75)	31.2 (0.78)	40.0 (1.00)	41.5 (1.04)
Density g/cm ³	ASTM D792 or ASTM D1505	0.939 Max.		0.939 Max.		0.939 Max.	
Tensile Strength lb/in. width (N/mm width)	ASTM D638/D6693 1. Tensile Strength at Break 2. % Elongation at Break	76 (13) 800	104 (18) 875	114 (20) 800	144 (24) 875	152 (27) 800	185 (32) 875
Hydrostatic Resistance psi (kPa)	ASTM D751 (B14)	118 (814)	122 (1206)	175 (1241)	180 (1586)	230 (1724)	250
Puncture Resistance lbf (N)	ASTM D4833 (130)	30 (195)	44 (200)	45 (270)	60 (270)	60 (334)	75
Tear Resistance lbf (N)	ASTM D1004 (49)	11 (62)	14 (71)	16 (89)	20 (98)	22 (120)	27
Volatile Loss Method A	ASTM 1203		<1%		<1%		<1%
Resistance to Soil Burial (% change maximum in original value)	ASTM D3083 1. Tensile Strength at Yield 2. Tensile Strength at Break 3. Elongation at Yield 4. Elongation at Break 5. Modulus of Elasticity		±10%		±10%		±10%
Low Temp. Impact Failure Temp F (C)	ASTM D746	(-70)	< -94	(-70)	< -94	(-70)	< -94
Dimensional Stability % Change	ASTM D1204		<2		<2		<2
Environmental Stress Crack Resistance Hours to failure	ASTM D5397 Appendix A		>400		>400		>400
Carbon Black %	ASTM D1603 or D4218	2.0	2.5	2.0	2.5	2.0	2.5
Perms grains/(hr/in. Hg) (grams/(day/mm Hg))	ASTM E96 Method A 73° F, 50% RH		0.045 (0.030)		0.029 (0.019)		0.022 (0.014)
FACTORY SEAM REQUIREMENTS (cm/sec)		3.6 x 10 ⁻¹⁰		2.3 x 10 ⁻¹⁰		1.7 x 10 ⁻¹⁰	
Bonded Seam Strength lb/in. width (N/cm width)	ASTM D4545 Mod.*	40 (70)	45 (79)	60 (105)	68 (118)	75 (131)	80 (140)
Seam Peel Adhesion lb/in. width (N/cm width)	ASTM D4545 Mod.*	30 (53)	36 (63)	45 (79)	53 (93)	60 (105)	69 (121)

Nominal Weight /Thousand Square Feet: RUFECO 2000B - 105 lbs., RUFECO 3000B - 157 lbs., RUFECO 4000B - 210 lbs.

* Raven Industries performs seam testing at 12" per minute.

$0.10 \text{ PERM} = 8.03 \times 10^{-9} \text{ cm/sec}$

Rufco 3000B meets or exceeds ASTM E-1745, Class "A" standard for water vapor retarders used in contact with soil or granular fill under concrete slabs.

Note: To the best of our knowledge, unless otherwise stated, these are typical property values and are intended as guides only, not as specification limits. NO WARRANTIES ARE MADE AS TO THE FITNESS FOR A SPECIFIC USE OR MERCHANTABILITY OF PRODUCTS REFERRED TO, no guarantee of satisfactory results from reliance upon contained information or recommendations and disclaims all liability for resulting loss or damage.



PLANT LOCATION

Sioux Falls, South Dakota

www.rufco.com

SALES OFFICE

P.O. Box 5107
Sioux Falls, SD 57117-5107
(605) 335-0174
(605) 331-0333 - FAX
800-635-3456



ISO 9001:2000 CERTIFIED
MANAGEMENT SYSTEM

208 EFD 1078



**Logos Operating
Below Grade Tank Modification**

19.15.17.16 Modification

In pursuant to NMOCD 19.15.17.16 LOGOS Operating request to Modify the current below grade tank referenced at the Rosa Unit #001 SWD.

LOGOS currently has on file with the NMOCD a Closure Plan only and hereby request to follow the referenced plan in this referenced below grade tank permit.

The alternations that would take place are as follows:

- LOGOS requests to lift the referenced below grade tank and install 40 mil liner.
- LOGOS requests to install a corrugated steel wall located inside the berm area to serve as a secondary containment and prevent runoff.
- When the below grade tank is lifted for the installation of the liner and corrugated steel wall LOGOS will inspect the ground visually to determine no release has occurred. LOGOS will keep photo verification.
- If a release is determined when the below grade tank is lifted, LOGOS will follow NMOCD 19.15.29 NMAC regulations.



Logos Operating Below Grade Tank Operation and Maintenance Plan

In accordance with NMAC 19.15.17, the following information describes the operation and maintenance plan for below grade tanks (BGT) for Logos Operating, LLC (Logos). This is a standard procedure for Logos.

General Plan in Accordance with 19.15.17.12

1. Logos will operate and maintain the BGT to contain liquids and solids while maintaining the integrity of the liner, BGT, and corrugated steel wall. The operation and maintenance are plan are designed to prevent contamination of fresh water and protect public health and safety.
2. Logos will not store or discharge hazardous waste into the BGT.
3. If the BGT develops a leak, Logos will remove all of the fluids from the BGT within 48 hours and notify the appropriate division office pursuant to 19.15.29 NMAC. Logos will immediately take the BGT out of service until it is properly repaired or replaced.
4. The BGT will be operated and designed to prevent the collection of surface water run-on.
5. The BGT will be bounded by a corrugated steel wall which will contain an unanticipated release. The BGT and corrugated steel wall are also located inside of the berm which will act as a secondary containment barrier in the event of an unanticipated release.
6. Logos will not allow the BGT to overflow or collect surface water run on. Discharges to the pit will be shutoff automatically if the high level alarm is triggered from the ESD or manually if the ESD is not functional. Surface water run-on is prevented by having a corrugated steel ring that is above ground level which will prevent water run-on from entering the BGT as well as a radial space that keeps the BGT walls away from the ground level which will also prevent water-run on from entering and overfilling the BGT.
7. Logos will remove any measurable layer of oil from the BGT.
8. The BGT will be inspected for leak and damage at least monthly and the integrity will be documented annually with records maintained for at least 5 years.
9. The BGT will be operated with adequate freeboard to prevent overflow of the BGT.
10. The BGT sidewalls will be kept free of anything that could not allow for inspection of liner and sidewalls.



Below Grade Tank Design and Construction Plan

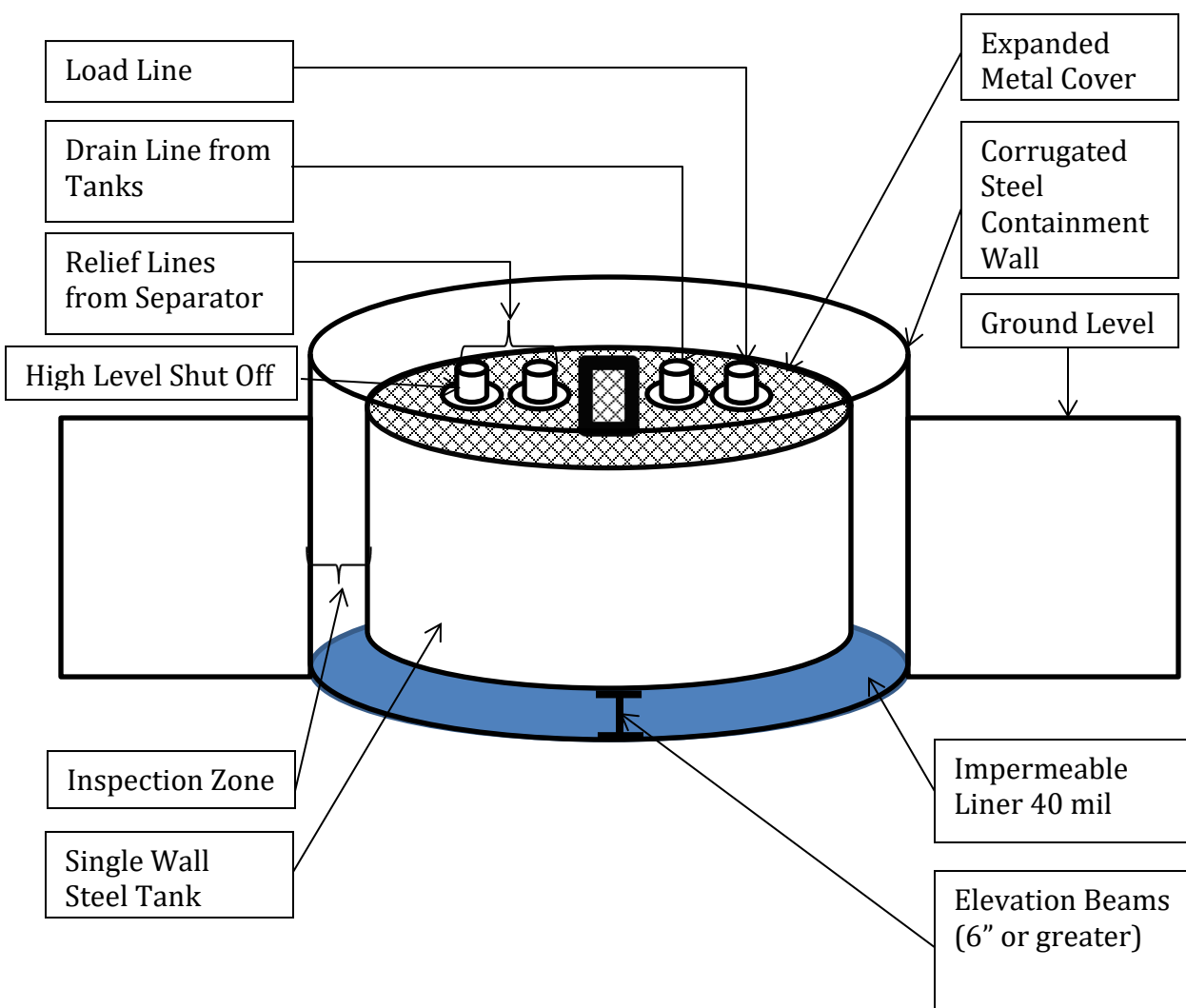
In accordance with NMAC 19.15.17, the following information describes the design and construction plan for below grade tanks (BGT) for Logos Operating, LLC (Logos). This is a standard design and construction plan for Logos.

General Plan in Accordance with 19.15.17.11

1. Logos will design and construct a BGT to contain liquids and solids that is designed to prevent contamination of fresh water and protect public health and the environment.
2. The location of the BGT will be at a battery or well location which contains proper upright signs (in compliance with 19.15.17.11C).
3. The BGT will be contained within the operating berm and will be protected with 4' hog wire fencing with one strand of barbed wire on top to deter unauthorized access. A six foot chain link fence topped with two strands of barbed wire will be used if the BGT is within 1000 feet of permanent residence, school, hospital, institution or church. Logos ensures that all gates associated with the fence are closed and locked when responsible personnel are not onsite.
4. The BGT will have an expanded metal cover.
5. The BGT will be constructed out of steel which is resistant to the particular contents and resistant to damage from sunlight. The pit will be painted to minimize rust and corrosion.
6. The foundation will be level, free of rocks, debris, sharp edges or irregularities to prevent punctures, cracks, and indentations of the liner or tank bottom.
7. The BGT will be designed and constructed to prevent surface water run-on from entering the tank. The corrugated steel wall surrounding the pit will be above grade and will prevent water from running into the BGT.
8. The BGT will have a single wall that is capable of being inspected. The BGT will have a corrugated steel wall barrier that prevents the ground from collapsing around the BGT and allows for the BGT to be thoroughly inspected by providing a direct sight line to the BGT bottom and to the BGT impermeable liner.
9. The BGT will be set on beams, six inches or greater, on the liner in a way that will protect the bottom of the BGT from sharp objects.
10. The BGT system is equipped with a high-level shut-off control device with the ability to detect a high level in the tank and initiate the shutdown process. This design is based on 19.15.17.11.I.4.a.
11. An impermeable liner will be installed below the BGT so that any leak in the BGT will flow to a visible point on top of the impermeable liner. The geomembrane liner consists of a 45-mil flexible LLDPE material manufactured by Raven Industries as K40B. This product is four layer reinforced laminated containing no adhesives. The outer layers consist of a high strength polyethylene film manufactured using virgin grade resins and stabilizers for UV resistance in exposed applications. K40B is reinforced with 1300 denier polyester bi-directional scrim reinforcement. It exceeds ASTM D3083 standard by 10%. It is typically used in Brine Pond, Oilfield Pit liner and other industrial applications. The manufacture spec sheet is attached.



Logos Operating Below Grade Tank Design





Logos Operating, LLC Below Grade Tank Closure Plan

In accordance with NMAC 19.15.17.13, the following information describes the closure plan for below grade tanks (BGT) for Logos Operating, LLC (LOGOS).

General Plan:

1. Logos will notify the surface owner by certified mail, return receipt requested, unless surface owner is a public entity (BLM/State/Tribal) then an email notification will be sent, of plans to close the BGT at least 72 hours, but no more than 1 week, prior to any closure operation. The notice will include the well name, API number, and location.
2. Logos will notify the appropriate district office verbally and in writing with at least 72 hours of notice but no more than 1 week. The notice will include well name and API number as well as the location containing unit letter, section, township, and range.
3. Logos will remove liquids and sludge from the BGT within 60 days of cessation of operations and dispose of those at a division approved facility.
4. Within 6 months of cessation of operations, Logos will dispose, reuse/recycle, or reclaim in a division approved manner the BGT, and all unused equipment associated with the BGT.
5. The soils beneath the BGT will be tested as follows:

Components	Tests Method	Limit (mg/kg)
		≤50' bottom of BGT to GW
Benzene	EPA SW-846 8021B or 8015M	10
BTEX	EPA SW-846 8021B or 8260B	50
TPH	EPA SW-846 418.1	100
Chlorides	EPA 300.0	600
GRO/DRO	EPA SW-846 80165M	n/a
		51'-100' bottom of BGT to GW
Benzene	EPA SW-846 8021B or 8015M	10
BTEX	EPA SW-846 8021B or 8260B	50
TPH	EPA SW-846 418.1	2500
Chlorides	EPA 300.0	10,000
GRO/DRO	EPA SW-846 80165M	1000
		>100' bottom of BGT to GW
Benzene	EPA SW-846 8021B or 8015M	10
BTEX	EPA SW-846 8021B or 8260B	50
TPH	EPA SW-846 418.1	2500
Chlorides	EPA 300.0	20,000
GRO/DRO	EPA SW-846 80165M	1000
		1000

6. Within six (6) months of cessation of operations, LOGOS will remove the below-grade tank and dispose of it in a division-approved facility or recycle, reuse, or reclaim it in a manner that is a division approved.
7. Upon closing of the BGT, Logos will reclaim the unused BGT location to a safe and stable condition that blends with the surrounding undisturbed area as provided in Paragraph 2 of subsection H of 19.15.17.13 as well as recontouring the area in accordance with paragraph 5 in subsection H of 19.15.17.13 NMAC. The soil cover will be constructed to prevent ponding of water and erosion of the cover material.
8. The reclamation of the BGT area will contain a uniform vegetative cover that reflects a life-form ratio of plus or minus fifty (50%) of pre-disturbance levels and a total percent plant cover of at least seventy (70%) of pre-disturbance levels, excluding noxious weeds. The re-vegetation and reclamation obligations imposed by other applicable federal or tribal agencies that manage the lands will supersede these provisions and govern the obligations. Logos will notify the division when reclamation and re-vegetation is complete.
9. Logos will submit a closure report on form C-144 within 60 days of closure completion. The closure report will contain the following:
 - Soil Backfilling and Cover Installation (See Report)
 - Re-vegetation application rates and seeding techniques (See Report)
 - Photo documentation of the site reclamation (Included as an attachment)
 - Confirmation Sampling Results (Included as an attachment)
 - Proof of closure notice (Included as an attachment)

District I
1625 N. French Dr., Hobbs, NM 88240
Phone:(575) 393-6161 Fax:(575) 393-0720
District II
811 S. First St., Artesia, NM 88210
Phone:(575) 748-1283 Fax:(575) 748-9720
District III
1000 Rio Brazos Rd., Aztec, NM 87410
Phone:(505) 334-6178 Fax:(505) 334-6170
District IV
1220 S. St Francis Dr., Santa Fe, NM 87505
Phone:(505) 476-3470 Fax:(505) 476-3462

State of New Mexico
Energy, Minerals and Natural Resources
Oil Conservation Division
1220 S. St Francis Dr.
Santa Fe, NM 87505

CONDITIONS

Action 245623

CONDITIONS

Operator: LOGOS OPERATING, LLC 2010 Afton Place Farmington, NM 87401	OGRID: 289408
	Action Number: 245623
	Action Type: [C-144] Below Grade Tank Plan (C-144B)

CONDITIONS

Created By	Condition	Condition Date
scwells	None	8/2/2023