

Form 3160-3
(June 2015)FORM APPROVED
OMB No. 1004-0137
Expires: January 31, 2018

UNITED STATES
DEPARTMENT OF THE INTERIOR
BUREAU OF LAND MANAGEMENT
APPLICATION FOR PERMIT TO DRILL OR REENTER

1a. Type of work: <input type="checkbox"/> DRILL <input type="checkbox"/> REENTER 1b. Type of Well: <input type="checkbox"/> Oil Well <input type="checkbox"/> Gas Well <input type="checkbox"/> Other 1c. Type of Completion: <input type="checkbox"/> Hydraulic Fracturing <input type="checkbox"/> Single Zone <input type="checkbox"/> Multiple Zone		5. Lease Serial No. 6. If Indian, Allottee or Tribe Name 7. If Unit or CA Agreement, Name and No. 8. Lease Name and Well No. <div style="text-align: center; font-weight: bold;">[331685]</div>
2. Name of Operator <div style="text-align: center; font-weight: bold;">[6137]</div>		9. API Well No. <div style="text-align: center; font-weight: bold;">30-025-51825</div>
3a. Address	3b. Phone No. (include area code)	10. Field and Pool, or Exploratory <div style="text-align: center; font-weight: bold;">[97903]</div>
4. Location of Well (Report location clearly and in accordance with any State requirements. *) At surface At proposed prod. zone		11. Sec., T. R. M. or Blk. and Survey or Area
14. Distance in miles and direction from nearest town or post office*		12. County or Parish 13. State
15. Distance from proposed* location to nearest property or lease line, ft. (Also to nearest drig. unit line, if any)	16. No of acres in lease	17. Spacing Unit dedicated to this well
18. Distance from proposed location* to nearest well, drilling, completed, applied for, on this lease, ft.	19. Proposed Depth	20. BLM/BIA Bond No. in file
21. Elevations (Show whether DF, KDB, RT, GL, etc.)	22. Approximate date work will start*	23. Estimated duration
24. Attachments		

The following, completed in accordance with the requirements of Onshore Oil and Gas Order No. 1, and the Hydraulic Fracturing rule per 43 CFR 3162.3-3 (as applicable)

- | | |
|---|---|
| 1. Well plat certified by a registered surveyor.
2. A Drilling Plan.
3. A Surface Use Plan (if the location is on National Forest System Lands, the SUPO must be filed with the appropriate Forest Service Office). | 4. Bond to cover the operations unless covered by an existing bond on file (see Item 20 above).
5. Operator certification.
6. Such other site specific information and/or plans as may be requested by the BLM. |
|---|---|

25. Signature	Name (Printed/Typed)	Date
Title		
Approved by (Signature)	Name (Printed/Typed)	Date
Title		
Office		

Application approval does not warrant or certify that the applicant holds legal or equitable title to those rights in the subject lease which would entitle the applicant to conduct operations thereon.
 Conditions of approval, if any, are attached.

Title 18 U.S.C. Section 1001 and Title 43 U.S.C. Section 1212, make it a crime for any person knowingly and willfully to make to any department or agency of the United States any false, fictitious or fraudulent statements or representations as to any matter within its jurisdiction.

NGMP Rec 08/08/2023

SL

(Continued on page 2)



Approval Date: 08/01/2023

KZ
08/11/2023

*(Instructions on page 2)

District I

1625 N. French Dr., Hobbs, NM 88240
Phone: (575) 393-6161 Fax: (575) 393-0720

District II

811 S. First St., Artesia, NM 88210
Phone: (575) 748-1283 Fax: (575) 748-9720

District III

1000 Rio Brazos Road, Aztec, NM 87410
Phone: (505) 334-6178 Fax: (505) 334-6170

District IV

1220 S. St. Francis Dr., Santa Fe, NM 87505
Phone: (505) 476-3460 Fax: (505) 476-3462

State of New Mexico

Energy, Minerals & Natural Resources Department

OIL CONSERVATION DIVISION

1220 South St. Francis Dr.

Santa Fe, NM 87505

Form C-102

Revised August 1, 2011

Submit one copy to appropriate

District Office

☐ AMENDED REPORT

WELL LOCATION AND ACREAGE DEDICATION PLAT

¹ API Number 30-025-51825	² Pool Code 97903	³ Pool Name WC-025 G-08 S253235G;LWR BONE SPRIN [97903]
⁴ Property Code 331685	⁵ Property Name VAN DOO DAH 28-33 FED COM	
⁷ OGRID No. 6137	⁸ Operator Name DEVON ENERGY PRODUCTION COMPANY, L.P.	⁶ Well Number 333H
		⁹ Elevation 3390.3

¹⁰ Surface Location

UL or lot no.	Section	Township	Range	Lot Idn	Feet from the	North/South line	Feet from the	East/West line	County
N	21	25 S	32 E		200	SOUTH	1540	WEST	LEA

¹¹ Bottom Hole Location If Different From Surface

UL or lot no.	Section	Township	Range	Lot Idn	Feet from the	North/South line	Feet from the	East/West line	County
N	33	25 S	32 E		20	SOUTH	2070	WEST	LEA

¹² Dedicated Acres	¹³ Joint or Infill	¹⁴ Consolidation Code	¹⁵ Order No.
320			

No allowable will be assigned to this completion until all interests have been consolidated or a non-standard unit has been approved by the division.

<p>NW CORNER SEC. 21 LAT. = 32.1231388°N LONG. = 103.6886842°W NMSP EAST (FT) N = 409130.93 E = 740905.34</p> <p>W/4 CORNER SEC. 21 LAT. = 32.1158978°N LONG. = 103.6886867°W NMSP EAST (FT) N = 406496.74 E = 740920.33</p> <p>FIRST TAKE POINT 100' FNL, 2070' FWL LAT. = 32.1083709°N LONG. = 103.6819983°W NMSP EAST (FT) N = 403771.05 E = 743007.65</p> <p>NW CORNER SEC. 28 LAT. = 32.1085668°N LONG. = 103.6886834°W NMSP EAST (FT) N = 403829.87 E = 740937.30</p> <p>W/4 CORNER SEC. 28 LAT. = 32.1013805°N LONG. = 103.6886378°W NMSP EAST (FT) N = 401215.68 E = 740967.06</p> <p>SW CORNER SEC. 28 LAT. = 32.0941331°N LONG. = 103.6886262°W NMSP EAST (FT) N = 398579.22 E = 740986.41</p> <p>W/4 CORNER SEC. 33 LAT. = 32.0886667°N LONG. = 103.6886534°W NMSP EAST (FT) N = 395035.76 E = 740993.81</p> <p>SW CORNER SEC. 33 LAT. = 32.0796245°N LONG. = 103.6886768°W NMSP EAST (FT) N = 393301.15 E = 741002.30</p>		<p>N/4 CORNER SEC. 21 LAT. = 32.1231544°N LONG. = 103.6800770°W NMSP EAST (FT) N = 409152.64 E = 743569.95</p> <p>VAN DOO DAH 28-33 FED COM 333H ELEV. = 3390.3' LAT. = 32.1091753°N (NAD83) LONG. = 103.6837113°W NMSP EAST (FT) N = 404060.47 E = 742475.50</p> <p>N/4 CORNER SEC. 28 LAT. = 32.1086683°N LONG. = 103.6800892°W NMSP EAST (FT) N = 403882.79 E = 743598.11</p> <p>S/4 CORNER SEC. 28 LAT. = 32.0941449°N LONG. = 103.6800514°W NMSP EAST (FT) N = 398599.50 E = 743641.83</p> <p>SE CORNER SEC. 28 LAT. = 32.0941915°N LONG. = 103.6714967°W NMSP EAST (FT) N = 398632.65 E = 746300.54</p> <p>E/4 CORNER SEC. 33 LAT. = 32.0869362°N LONG. = 103.6714764°W NMSP EAST (FT) N = 395953.26 E = 746313.42</p> <p>SE CORNER SEC. 33 LAT. = 32.0796633°N LONG. = 103.6714898°W NMSP EAST (FT) N = 393323.87 E = 746325.50</p>		<p>¹⁷ OPERATOR CERTIFICATION</p> <p>I hereby certify that the information contained herein is true and complete to the best of my knowledge and belief, and that this organization either owns a working interest or unleased mineral interest in the land including the proposed bottom hole location or has a right to drill this well at this location pursuant to a contract with an owner of such a mineral or working interest, or to a voluntary pooling agreement or a compulsory pooling order heretofore entered by the division.</p> <p><i>Jenny Harms</i> 11-2-2020 Signature Date</p> <p>JENNY HARMS Printed Name</p> <p>JENNY.HARMS@DVN.COM E-mail Address</p>	
<p>NOTE: LATITUDE AND LONGITUDE COORDINATES ARE SHOWN USING THE NORTH AMERICAN DATUM OF 1983 (NAD83) LISTED NEW MEXICO STATE PLANE EAST COORDINATES ARE GRID (NAD83), BASIS OF BEARING AND DISTANCES USED ARE NEW MEXICO STATE PLANE EAST COORDINATES MODIFIED TO THE SURFACE, VERTICAL DATUM NAVD88.</p> <p>NOTE: LATITUDE AND LONGITUDE COORDINATES ARE SHOWN USING THE NORTH AMERICAN DATUM OF 1983 (NAD83) LISTED NEW MEXICO STATE PLANE EAST COORDINATES ARE GRID (NAD83), BASIS OF BEARING AND DISTANCES USED ARE NEW MEXICO STATE PLANE EAST COORDINATES MODIFIED TO THE SURFACE, VERTICAL DATUM NAVD88.</p>		<p>¹⁸ SURVEYOR CERTIFICATION</p> <p>I hereby certify that the well location shown on this plat was plotted from field notes of actual surveys made by me or under my supervision, and that the same is true and correct to the best of my belief.</p> <p>OCTOBER 1, 2020 Date of Survey</p> <p>Signature and Seal of Professional Surveyor: <i>William F. Jaramillo</i> Certificate Number: 12797 Professional Surveyor No. 8523</p>			

Intent ☒ As Drilled ☐

API # 30-025-51825		
Operator Name: DEVON ENERGY PRODUCTION CO., L.P.	Property Name: VAN DOO DAH 28-33 FED COM	Well Number 333H

Kick Off Point (KOP)

UL	Section	Township	Range	Lot	Feet	From N/S	Feet	From E/W	County
	28	25S	32E		41 FNL		2070 FWL		LEA
Latitude 32.10841653					Longitude -103.68198972				NAD 83

First Take Point (FTP)

UL	Section	Township	Range	Lot	Feet	From N/S	Feet	From E/W	County
C	28	25S	32E		100	NORTH	2070	WEST	LEA
Latitude 32.1083709					Longitude 103.6819983				NAD 83

Last Take Point (LTP)

UL	Section	Township	Range	Lot	Feet	From N/S	Feet	From E/W	County
N	33	25S	32E		100	SOUTH	2070	WEST	LEA
Latitude 32.0799142					Longitude 103.6819942				NAD 83

Is this well the defining well for the Horizontal Spacing Unit?

☒ YES

Is this well an infill well?

☐ NO

If infill is yes please provide API if available, Operator Name and well number for Defining well for Horizontal Spacing Unit.

API #		
Operator Name:	Property Name:	Well Number

KZ 06/29/2018

District I
1625 N. French Dr., Hobbs, NM 88240
District II
811 S. First St., Artesia, NM 88210
District III
1000 Rio Brazos Road, Aztec, NM 87410
District IV
1220 S. St. Francis Dr., Santa Fe, NM 87505

State of New Mexico
Energy, Minerals and Natural Resources Department
Oil Conservation Division
1220 South St. Francis Dr.
Santa Fe, NM 87505

Submit Original
to Appropriate
District Office

GAS CAPTURE PLAN

Date: November 3, 2020

☒ Original Devon & OGRID No.: Devon Energy Production Co., L.P. 6137
☐ Amended - Reason for Amendment: _____

This Gas Capture Plan outlines actions to be taken by the Devon to reduce well/production facility flaring/venting for new completion (new drill, recomple to new zone, re-frac) activity.

Note: Form C-129 must be submitted and approved prior to exceeding 60 days allowed by Rule (Subsection A of 19.15.18.12 NMAC).

Well(s)/Production Facility – Name of facility

The well(s) that will be located at the production facility are shown in the table below.

Well Name	API	SHL FOOTAGES					Expected MCF/D	Flared or Vented	CTB
Van Doo Dah 28-33 Fed Com 711H		28-25S-32E	160	FWL	475	FNL			Marwari 28 CTB 2
Van Doo Dah 28-33 Fed Com 620H		28-25S-32E	190	FWL	475	FNL			Marwari 28 CTB 2
Van Doo Dah 28-33 Fed Com 730H		28-25S-32E	220	FWL	475	FNL			Marwari 28 CTB 2
Van Doo Dah 28-33 Fed Com 713H		21-25S-32E	1510	FWL	200	FSL			Marwari 28 CTB 2
Van Doo Dah 28-33 Fed Com 333H	30-025-51825	21-25S-32E	1540	FWL	200	FSL			Marwari 28 CTB 2
Van Doo Dah 28-33 Fed Com 733H		21-25S-32E	1570	FWL	200	FSL			Marwari 28 CTB 2
Van Doo Dah 28-33 Fed Com 715H		28-25S-32E	1920	FEL	475	FNL			Marwari 28 CTB 2
Van Doo Dah 28-33 Fed Com 625H		28-25S-32E	1890	FEL	475	FNL			Marwari 28 CTB 2
Van Doo Dah 28-33 Fed Com 735H		28-25S-32E	1860	FEL	475	FNL			Marwari 28 CTB 2
Van Doo Dah 28-33 Fed Com 717H		28-25S-32E	715	FEL	325	FNL			Marwari 28 CTB 1
Van Doo Dah 28-33 Fed Com 337H		28-25S-32E	685	FEL	325	FNL			Marwari 28 CTB 1
Van Doo Dah 28-33 Fed Com 737H		28-25S-32E	895	FEL	475	FNL			Marwari 28 CTB 2
Van Doo Dah 33-28 Fed Com 714H		28-25S-32E	865	FEL	475	FNL			Marwari 28 CTB 2
Van Doo Dah 33-28 Fed Com 624H		28-25S-32E	835	FEL	475	FNL			Marwari 28 CTB 2
Van Doo Dah 33-28 Fed Com 734H		33-25S-32E	2276	FEL	180	FSL			Van Doo Dah 33 CTB

Van Doo Dah 33-28 Fed Com 716H		33-25S-32E	851	FEL	177	FSL			Van Doo Dah 33 CTB
Van Doo Dah 33-28 Fed Com 626H		33-25S-32E	821	FEL	177	FSL			Van Doo Dah 33 CTB
Van Doo Dah 33-28 Fed Com 736H		33-25S-32E	791	FEL	177	FSL			Van Doo Dah 33 CTB

Gathering System and Pipeline Notification

Well(s) will be connected to a production facility after flowback operations are complete, if DCP system is in place. The gas produced from production facility is dedicated to DCP and will be connected to DCP low/high pressure gathering system located in Lea County, New Mexico. It will require 0' to DCP pipeline to connect the facility to low/high pressure gathering system. Devon will build the line to DCP and then after the line is ready for service, Devon give the to DCP for operations. Devon provides (periodically) to DCP a drilling, completion and estimated first production date for wells that are scheduled to be drilled in the foreseeable future. In addition, Devon and DCP have periodic conference calls to discuss changes to drilling and completion schedules. Gas from these wells will be processed at DCP Processing Plant located in the reference table. The actual flow of the gas will be based on compression operating parameters and gathering system pressures.

Flowback Strategy

After the fracture treatment/completion operations, well(s) will be produced to temporary production tanks and gas will be flared or vented. During flowback, the fluids and sand content will be monitored. When the produced fluids contain minimal sand, the wells will be turned to production facilities. Gas sales should start as soon as the wells start flowing through the production facilities, unless there are operational issues on DCP system at that time. Based on current information, it is Devon's belief the system can take this gas upon completion of the well(s).

Safety requirements during cleanout operations from the use of underbalanced air cleanout systems may necessitate that sand and non-pipeline quality gas be vented and/or flared rather than sold on a temporary basis.

Alternatives to Reduce Flaring

Below are alternatives considered from a conceptual standpoint to reduce the amount of gas flared.

- Power Generation – On lease
 - Only a portion of gas is consumed operating the generator, remainder of gas will be flared
- Compressed Natural Gas – On lease
 - Gas flared would be minimal, but might be uneconomical to operate when gas volume declines
- NGL Removal – On lease
 - Plants are expensive, residue gas is still flared, and uneconomical to operate when gas volume declines

Reference Table:

DCP Plant locations
 Artesia Sec. 7, T18S, R28E,
 Eunice Sec. 5, T21S, R36E
 Linam Sec. 6, T19S, R37E
 Zia II Sec. 19, T19S, R32E

Van Doo Dah 28-33 Fed Com 333H

1. Geologic Formations

TVD of target	11899	Pilot hole depth	N/A
MD at TD:	22108	Deepest expected fresh water	

Basin

Formation	Depth (TVD) from KB	Water/Mineral Bearing/Target Zone?	Hazards*
Rustler	995		
Salt	1380		
Lamar	4625		
Delaware	4625		
Cherry Canyon	5580		
Brushy Canyon	7170		
1st Bone Spring Lime	8680		
Bone Spring 1st	9665		
Bone Spring 2nd	10310		
3rd Bone Spring Lime	10805		
Bone Spring 3rd	11415		

*H2S, water flows, loss of circulation, abnormal pressures, etc.

Van Doo Dah 28-33 Fed Com 333H

2. Casing Program (Primary Design)

Hole Size	Csg. Size	Wt (PPF)	Grade	Conn	Casing Interval		Casing Interval	
					From (MD)	To (MD)	From (TVD)	To (TVD)
17 1/2	13 3/8	48	H40	STC	0	1020	0	1020
9 7/8	8 5/8	32	P110	TLW	0	10335	0	10335
7 7/8	5 1/2	17	P110	BTC	0	22108	0	11899

• All casing strings will be tested in accordance with Onshore Oil and Gas Order #2 IILB.1.h Must have table for contingency casing.

3. Cementing Program (Primary Design)

Casing	# Skis	TOC	Wt. ppg	Yld (ft3/sack)	Slurry Description
Surface	777	Surf	13.2	1.44	Lead: Class C Cement + additives
Int 1	590	Surf	9	3.27	Lead: Class C Cement + additives
	67	4000' above	13.2	1.44	Tail: Class H / C + additives
Int 1 Intermediate Squeeze	As Needed	Surf	13.2	1.44	Squeeze Lead: Class C Cement + additives
	590	Surf	9	3.27	Lead: Class C Cement + additives
	67	4000' above	13.2	1.44	Tail: Class H / C + additives
Production	85	9835	9	3.27	Lead: Class H / C + additives
	1432	11285	13.2	1.44	Tail: Class H / C + additives

Casing String	% Excess
Surface	50%
Intermediate 1	30%
Intermediate 1 (Two Stage)	25%
Prod	10%

Van Doo Dah 28-33 Fed Com 333H

4. Pressure Control Equipment (Three String Design)

BOP installed and tested before drilling which hole?		Size?	Min. Required WP	Type	✓	Tested to:	
Int 1		13-58"	5M	Annular		X	50% of rated working pressure
				Blind Ram		X	5M
				Pipe Ram			
				Double Ram		X	
				Other*			
Production		13-5/8"	5M	Annular (5M)		X	50% of rated working pressure
				Blind Ram		X	5M
				Pipe Ram			
				Double Ram		X	
				Other*			
				Annular (5M)			
				Blind Ram			
				Pipe Ram			
				Double Ram			
				Other*			
N	A variance is requested for the use of a diverter on the surface casing. See attached for schematic.						
Y	A variance is requested to run a 5 M annular on a 10M system						

5. Mud Program (Three String Design)

Section	Type	Weight (ppg)
Surface	FW Gel	8.5-9
Intermediate	DBE / Cut Brine	10-10.5
Production	OBM	8.5-9

Sufficient mud materials to maintain mud properties and meet minimum lost circulation and weight increase requirements will be kept on location at all times.

What will be used to monitor the loss or gain of fluid?	PVT/Pason/Visual Monitoring
---	-----------------------------

6. Logging and Testing Procedures

Logging, Coring and Testing	
X	Will run GR/CNL from TD to surface (horizontal well - vertical portion of hole). Stated logs run will be in the Completion Report and submitted to the BLM.
	No logs are planned based on well control or offset log information.
	Drill stem test? If yes, explain.
	Coring? If yes, explain.

Additional logs planned		Interval
	Resistivity	Int. shoe to KOP
	Density	Int. shoe to KOP
X	CBL	Production casing
X	Mud log	Intermediate shoe to TD
	PEX	

7. Drilling Conditions

Condition	Specify what type and where?
BH pressure at deepest TVD	5569
Abnormal temperature	No

Mitigation measure for abnormal conditions. Describe. Lost circulation material/sweeps/mud scavengers.

Hydrogen Sulfide (H₂S) monitors will be installed prior to drilling out the surface shoe. If H₂S is detected in concentrations greater than 100 ppm, the operator will comply with the provisions of Onshore Oil and Gas Order #6. If Hydrogen Sulfide is encountered measured values and formations will be provided to the BLM.

N	H ₂ S is present
Y	H ₂ S plan attached.

8. Other facets of operation

Is this a walking operation? Potentially

- 1 If operator elects, drilling rig will batch drill the surface holes and run/cement surface casing; walking the rig to next wells on the pad.
- 2 The drilling rig will then batch drill the intermediate sections and run/cement intermediate casing; the wellbore will be isolated with a blind flange and pressure gauge installed for monitoring the well before walking to the next well.
- 3 The drilling rig will then batch drill the production hole sections on the wells with OBM, run/cement production casing, and install TA caps or tubing heads for completions.

NOTE: During batch operations the drilling rig will be moved from well to well however, it will not be removed

Van Doo Dah 28-33 Fed Com 333H

from the pad until all wells have production casing run/cemented.

Will be pre-setting casing? Potentially

- 1 Spudder rig will move in and batch drill surface hole.
 - a. Rig will utilize fresh water based mud to drill surface hole to TD. Solids control will be handled entirely on a closed loop basis.,
- 2 After drilling the surface hole section, the spudder rig will run casing and cement following all of the applicable rules and regulations (OnShore Order 2, all COAs and NMOCD regulations).
- 3 The wellhead will be installed and tested once the surface casing is cut off and the WOC time has been reached.
- 4 A blind flange with the same pressure rating as the wellhead will be installed to seal the wellbore. Pressure will be monitored with a pressure gauge installed on the wellhead.
- 5 Spudder rig operations is expected to take 4-5 days per well on a multi-well pa.
- 6 The NMOCD will be contacted and notified 24 hours prior to commencing spudder rig operations.
- 7 Drilling operations will be performed with drilling rig. A that time an approved BOP stack will be nipped up and tested on the wellhead before drilling operations commences on each well.
 - a. The NMOCD will be contacted / notified 24 hours before the drilling rig moves back on to the pad with the pre-set surface casing.

Attachments

X Directional Plan
 Other, describe

Devon Energy

APD VARIANCE DATA

OPERATOR NAME: Devon Energy

1. SUMMARY OF Variance:

Devon Energy respectfully requests approval for the following additions to the drilling plan:

1. Potential utilization of a spudder rig to pre-set surface casing.

2. Description of Operations

1. A spudder rig contractor may move in their rig to drill the surface hole section and pre-set surface casing on this well.
 - a. After drilling the surface hole section, the rig will run casing and cement following all of the applicable rules and regulations (OnShore Order 2, all COAs and NMOCD regulations).
 - b. Rig will utilize fresh water based mud to drill surface hole to TD.
2. The wellhead will be installed and tested once the surface casing is cut off and the WOC time has been reached.
3. A blind flange with the same pressure rating as the wellhead will be installed to seal the wellbore. Pressure will be monitored with needle valves installed on two wingvalves.
 - a. A means for intervention will be maintained while the drilling rig is not over the well.
4. The BLM will be contacted and notified 24 hours prior to commencing spudder rig operations.
5. Drilling operation will be performed with the big rig. At that time an approved BOP stack will be nipped up and tested on the wellhead before drilling operations commences on each well.
 - a. The BLM will be contacted / notified 24 hours before the big rig moves back on to the pad with the pre-set surface casing.
6. Devon Energy will have supervision on the rig to ensure compliance with all BLM and NMOCD regulations and to oversee operations.
7. Once the rig is removed, Devon Energy will secure the wellhead area by placing a guard rail around the cellar area.



U.S. Department of the Interior
BUREAU OF LAND MANAGEMENT

Drilling Plan Data Report

08/02/2023

APD ID: 10400065101

Submission Date: 11/12/2020

Highlighted data
reflects the most
recent changes

Operator Name: DEVON ENERGY PRODUCTION COMPANY LP

Well Name: VAN DOO DAH 28-33 FED COM

Well Number: 333H

Well Type: OIL WELL

Well Work Type: Drill

[Show Final Text](#)

Section 1 - Geologic Formations

Formation ID	Formation Name	Elevation	True Vertical	Measured Depth	Lithologies	Mineral Resources	Producing Formatio
1140911	UNKNOWN	3670	0	0	ALLUVIUM, OTHER : Surface	NONE	N
1140912	RUSTLER	2675	995	995	SANDSTONE	NONE	N
1140916	TOP SALT	2290	1380	1380	SALT	NONE	N
1140920	BELL CANYON	-955	4625	4625	SANDSTONE	NATURAL GAS, OIL	N
1140914	BASE OF SALT	-955	4625	4625	SALT	NONE	N
1140921	CHERRY CANYON	-1910	5580	5580	SANDSTONE	NATURAL GAS, OIL	N
1140922	BRUSHY CANYON	-3500	7170	7170	SANDSTONE	NATURAL GAS, OIL	N
1140923	BONE SPRING LIME	-5010	8680	8680	LIMESTONE	NATURAL GAS, OIL	N
1140913	BONE SPRING	-5995	9665	9665	SANDSTONE	NATURAL GAS, OIL	N
1140910	BONE SPRING 2ND	-6640	10310	10310	SANDSTONE	NATURAL GAS, OIL	N
1140924	BONE SPRING LIME	-7135	10805	10805	LIMESTONE	NATURAL GAS, OIL	N
1140925	BONE SPRING 3RD	-7745	11415	11415	SANDSTONE	NATURAL GAS, OIL	Y
1140926	WOLFCAMP	-8240	11910	11910	SANDSTONE	NATURAL GAS, OIL	N
1140927	STRAWN	-10300	13970	13970	LIMESTONE	NATURAL GAS, OIL	N

Section 2 - Blowout Prevention



Commitment Runs Deep



Design Plan
Operation and Maintenance Plan
Closure Plan

SENM - Closed Loop Systems
June 2010

I. Design Plan

Devon uses MI SWACO closed loop system (CLS). The MI SWACO CLS is designed to maintain drill solids at or below 5%. The equipment is arranged to progressively remove solids from the largest to the smallest size. Drilling fluids can thus be reused and savings is realized on mud and disposal costs. Dewatering may be required with the centrifuges to insure removal of ultra fine solids.

The drilling location is constructed to allow storm water to flow to a central sump normally the cellar. This insures no contamination leaves the drilling pad in the event of a spill. Storm water is reused in the mud system or stored in a reserve fluid tank farm until it can be reused. All lubricants, oils, or chemicals are removed immediately from the ground to prevent the contamination of storm water. An oil trap is normally installed on the sump if an oil spill occurs during a storm.

A tank farm is utilized to store drilling fluids including fresh water and brine fluids. The tank farm is constructed on a 20 ml plastic lined, bermed pad to prevent the contamination of the drilling site during a spill. Fluids from other sites may be stored in these tanks for processing by the solids control equipment and reused in the mud system. At the end of the well the fluids are transported from the tank farm to an adjoining well or to the next well for the rig.

Prior to installing a closed-loop system on site, the topsoil, if present, will be stripped and stockpiled for use as the final cover or fill at the time of closure.

Signs will be posted on the fence surrounding the closed-loop system unless the closed-loop system is located on a site where there is an existing well, that is operated by Devon.

II. Operations and Maintenance Plan

Primary Shakers: The primary shakers make the first removal of drill solids from the drilling mud as it leaves the well bore. The shakers are sized to handle maximum drilling rate at optimal screen size. The shakers normally remove solids down to 74 microns.

Mud Cleaner: The Mud Cleaner cleans the fluid after it leaves the shakers. A set of hydrocyclones are sized to handle 1.25 to 1.5 times the maximum circulating rate. This ensures all the fluid is being processed to an average cut point of 25 microns. The wet discharged is dewatered on a shaker equipped with ultra fine mesh screens and generally cut at 40 microns.



Closed Loop Schematic



Centrifuges: The centrifuges can be one or two in number depending on the well geometry or depth of well. The centrifuges are sized to maintain low gravity solids at 5% or below. They may or may not need a dewatering system to enhance the removal rates. The centrifuges can make a cut point of 8-10 microns depending on bowl speed, feed rate, solids loading and other factors.

The centrifuge system is designed to work on the active system and be flexible to process incoming fluids from other locations. This set-up is also dependant on well factors.

Dewatering System: The dewatering system is a chemical mixing and dosing system designed to enhance the solids removal of the centrifuge. Not commonly used in shallow wells. It may contain pH adjustment, coagulant mixing and dosing, and polymer mixing and dosing. Chemical flocculation binds ultra fine solids into a mass that is within the centrifuge operating design. The

dewatering system improves the centrifuge cut point to infinity or allows for the return of clear water or brine fluid. This ability allows for the ultimate control of low gravity solids.

Cuttings Boxes: Cuttings boxes are utilized to capture drill solids that are discarded from the solids control equipment. These boxes are set upon a rail system that allows for the removal and replacement of a full box of cuttings with an empty one. They are equipped with a cover that insures no product is spilled into the environment during the transportation phase.

Process Tank: (Optional) The process tank allows for the holding and process of fluids that are being transferred into the mud system. Additionally, during times of lost circulation the process tank may hold active fluids that are removed for additional treatment. It can further be used as a mixing tank during well control conditions.

Sump and Sump Pump: The sump is used to collect storm water and the pump is used to transfer this fluid to the active system or to the tank for to hold in reserve. It can also be used to collect fluids that may escape during spills. The location contains drainage ditches that allow the location fluids to drain to the sump.

Reserve Fluids (Tank Farm): A series of frac tanks are used to replace the reserve pit. These are steel tanks that are equipped with a manifold system and a transfer pump. These tanks can contain any number of fluids used during the drilling process. These can include fresh water, cut brine, and saturated salt fluid. The fluid can be from the active well or reclaimed fluid from other locations. A 20 ml liner and berm system is employed to ensure the fluids do not migrate to the environment during a spill.

If a leak develops, the appropriate division district office will be notified within 48 hours of the discovery and the leak will be addressed. Spill prevention is accomplished by maintaining pump packing, hoses, and pipe fittings to insure no leaks are occurring. During an upset condition the source of the spill is isolated and repaired as soon as it is discovered. Free liquid is removed by a diaphragm pump and returned to the mud system. Loose topsoil may be used to stabilize the spill and the contaminated soil is excavated and placed in the cuttings boxes. After the well is finished and the rig has moved, the entire location is scrapped and testing will be performed to determine if a release has occurred.

All trash is kept in a wire mesh enclosure and removed to an approved landfill when full. All spent motor oils are kept in separate containers and they are removed and sent to an approved recycling center. Any spilled lubricants, pipe

dope, or regulated chemicals are removed from soil and sent to landfills approved for these products.

These operations are monitored by Mi Swaco service technicians. Daily logs are maintained to ensure optimal equipment operation and maintenance. Screen and chemical use is logged to maintain inventory control. Fluid properties are monitored and recorded and drilling mud volumes are accounted for in the mud storage farm. This data is kept for end of well review to insure performance goals are met. Lessons learned are logged and used to help with continuous improvement.

A MI SWACO field supervisor manages from 3-5 wells. They are responsible for training personnel, supervising installations, and inspecting sites for compliance of MI SWACO safety and operational policy.

III. Closure Plan

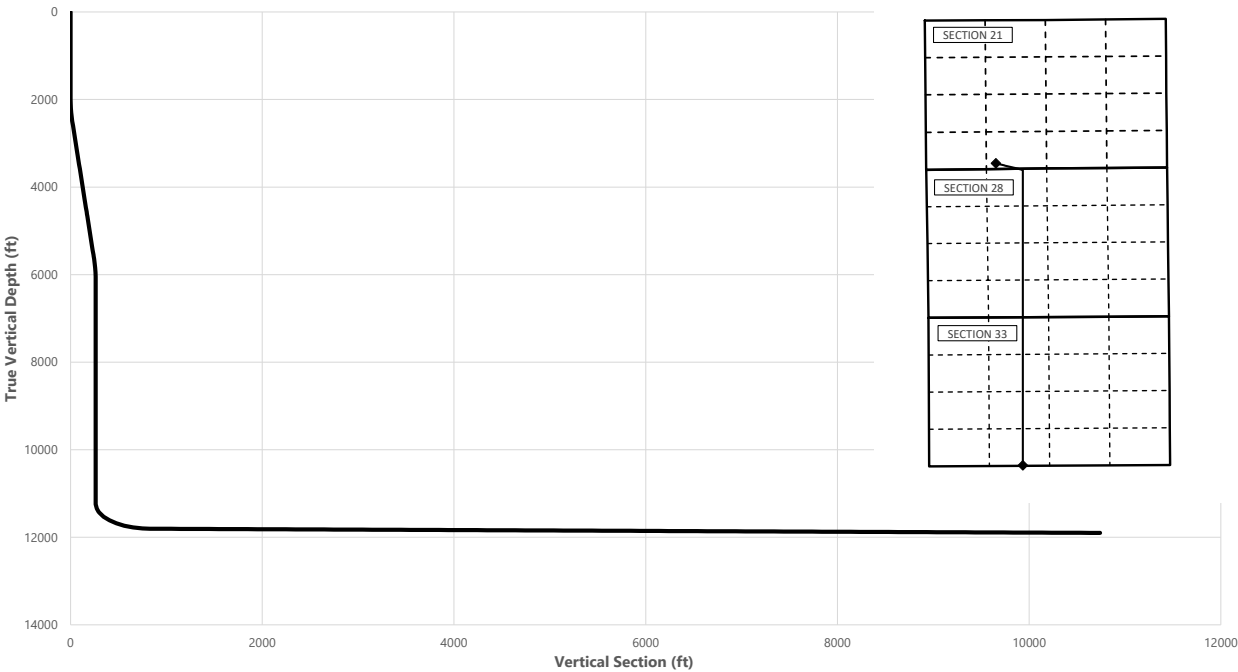
A maximum 340' X 340' caliche pad is built per well. All of the trucks and steel tanks fit on this pad. All fluid cuttings go to the steel tanks to be hauled by various trucking companies to an agency approved disposal.



Well: Van Doo Dah 28-33 Fed Com 333H
County: Lea
Wellbore: Permit Plan
Design: Permit Plan #1

Geodetic System: US State Plane 1983
Datum: North American Datum 1927
Ellipsoid: Clarke 1866
Zone: 3001 - NM East (NAD83)

MD (ft)	INC (°)	AZI (°)	TVD (ft)	NS (ft)	EW (ft)	VS (ft)	DLS (°/100ft)	Comment
0.00	0.00	0.00	0.00	0.00	0.00	0.00	0.00	SHL
2000.00	0.00	111.00	2000.00	0.00	0.00	0.00	0.00	Start Tangent
2500.00	10.00	111.00	2497.47	-15.60	40.63	17.83	1.00	Hold Tangent
5677.04	10.00	111.00	5626.24	-213.30	555.68	243.82	0.00	Drop to Vertical
6177.04	0.00	111.00	6123.71	-228.90	596.31	261.65	2.00	Hold Vertical
11285.40	0.00	180.00	11232.07	-228.90	596.31	261.65	0.00	KOP
12179.92	89.45	180.00	11805.00	-796.38	596.31	828.25	10.00	Landing Point
22107.65	89.45	180.00	11900.00	-10723.65	596.31	10740.22	0.00	BHL



Key Depths	MD (ft)	TVD (ft)
Rustler	0.00	0.00
Salt	1380.00	1380.00
Lamar	4660.36	4625.00
Delaware	4660.36	4625.00
Cherry Canyon	5630.09	5580.00
Brushy Canyon	7223.34	7170.00
1st Bone Spring Lime	8733.34	8680.00
Bone Spring 1st	9718.34	9665.00
Bone Spring 2nd	10363.34	10310.00
3rd Bone Spring Lime	10858.34	10805.00
Bone Spring 3rd / Point of Penetratic	11471.60	11415.00
EXIT	22027.65	11899.25

SHL
KOP
Point of Penetration
Exit
BHL

MD (ft)	TVD (ft)	Lat (°)	Long (°)	Section Footages
0.00	0.00	32.1091	-103.6838	200' FSL, 1540' FWL of Sec 21 in T25S, R32E
11285.40	11232.07	32.1084	-103.6819	41' FNL, 2070' FWL of Sec 28 in T25S, R32E
11471.60	11415.00	32.1083	-103.6820	100' FNL, 2070' FWL of Sec 28 in T25S, R32E
22027.65	11899.25	32.0799	-103.6820	100' FSL, 2070' FWL of Sec 33 in T25S, R32E
22107.65	11900.00	32.0796	-103.6821	20' FSL, 2070' FWL of Sec 33 in T25S, R32E

Van Doo Dah 28-33 Fed Com 333H



Well: Van Doo Dah 28-33 Fed Com 333H
County: Lea
Wellbore: Permit Plan
Design: Permit Plan #1

Geodetic System: US State Plane 1983
Datum: North American Datum 1927
Ellipsoid: Clarke 1866
Zone: 3001 - NM East (NAD83)

MD (ft)	INC (°)	AZI (°)	TVD (ft)	NS (ft)	EW (ft)	VS (ft)	DLS (°/100ft)	Comment
0.00	0.00	0.00	0.00	0.00	0.00	0.00	0.00	SHL
100.00	0.00	111.00	100.00	0.00	0.00	0.00	0.00	
200.00	0.00	111.00	200.00	0.00	0.00	0.00	0.00	
300.00	0.00	111.00	300.00	0.00	0.00	0.00	0.00	
400.00	0.00	111.00	400.00	0.00	0.00	0.00	0.00	
500.00	0.00	111.00	500.00	0.00	0.00	0.00	0.00	
600.00	0.00	111.00	600.00	0.00	0.00	0.00	0.00	
700.00	0.00	111.00	700.00	0.00	0.00	0.00	0.00	
800.00	0.00	111.00	800.00	0.00	0.00	0.00	0.00	
900.00	0.00	111.00	900.00	0.00	0.00	0.00	0.00	
995.00	0.00	111.00	995.00	0.00	0.00	0.00	0.00	Rustler
1000.00	0.00	111.00	1000.00	0.00	0.00	0.00	0.00	
1100.00	0.00	111.00	1100.00	0.00	0.00	0.00	0.00	
1200.00	0.00	111.00	1200.00	0.00	0.00	0.00	0.00	
1300.00	0.00	111.00	1300.00	0.00	0.00	0.00	0.00	
1380.00	0.00	111.00	1380.00	0.00	0.00	0.00	0.00	Salt
1400.00	0.00	111.00	1400.00	0.00	0.00	0.00	0.00	
1500.00	0.00	111.00	1500.00	0.00	0.00	0.00	0.00	
1600.00	0.00	111.00	1600.00	0.00	0.00	0.00	0.00	
1700.00	0.00	111.00	1700.00	0.00	0.00	0.00	0.00	
1800.00	0.00	111.00	1800.00	0.00	0.00	0.00	0.00	
1900.00	0.00	111.00	1900.00	0.00	0.00	0.00	0.00	
2000.00	0.00	111.00	2000.00	0.00	0.00	0.00	0.00	Start Tangent
2100.00	2.00	111.00	2099.98	-0.63	1.63	0.71	2.00	
2200.00	4.00	111.00	2199.84	-2.50	6.51	2.86	2.00	
2300.00	6.00	111.00	2299.45	-5.62	14.65	6.43	2.00	
2400.00	8.00	111.00	2398.70	-9.99	26.03	11.42	2.00	
2500.00	10.00	111.00	2497.47	-15.60	40.63	17.83	1.00	Hold Tangent
2600.00	10.00	111.00	2595.95	-21.82	56.84	24.94	0.00	
2700.00	10.00	111.00	2694.43	-28.04	73.05	32.06	0.00	
2800.00	10.00	111.00	2792.91	-34.27	89.27	39.17	0.00	
2900.00	10.00	111.00	2891.39	-40.49	105.48	46.28	0.00	
3000.00	10.00	111.00	2989.87	-46.71	121.69	53.40	0.00	
3100.00	10.00	111.00	3088.35	-52.93	137.90	60.51	0.00	
3200.00	10.00	111.00	3186.83	-59.16	154.11	67.62	0.00	
3300.00	10.00	111.00	3285.31	-65.38	170.32	74.74	0.00	
3400.00	10.00	111.00	3383.79	-71.60	186.53	81.85	0.00	
3500.00	10.00	111.00	3482.27	-77.83	202.75	88.96	0.00	
3600.00	10.00	111.00	3580.75	-84.05	218.96	96.08	0.00	
3700.00	10.00	111.00	3679.23	-90.27	235.17	103.19	0.00	
3800.00	10.00	111.00	3777.72	-96.50	251.38	110.30	0.00	
3900.00	10.00	111.00	3876.20	-102.72	267.59	117.42	0.00	
4000.00	10.00	111.00	3974.68	-108.94	283.80	124.53	0.00	
4100.00	10.00	111.00	4073.16	-115.16	300.02	131.64	0.00	
4200.00	10.00	111.00	4171.64	-121.39	316.23	138.76	0.00	
4300.00	10.00	111.00	4270.12	-127.61	332.44	145.87	0.00	
4400.00	10.00	111.00	4368.60	-133.83	348.65	152.98	0.00	
4500.00	10.00	111.00	4467.08	-140.06	364.86	160.10	0.00	
4600.00	10.00	111.00	4565.56	-146.28	381.07	167.21	0.00	
4660.36	10.00	111.00	4625.00	-150.04	390.86	171.51	0.00	Lamar, Delaware
4700.00	10.00	111.00	4664.04	-152.50	397.28	174.33	0.00	
4800.00	10.00	111.00	4762.52	-158.73	413.50	181.44	0.00	
4900.00	10.00	111.00	4861.00	-164.95	429.71	188.55	0.00	
5000.00	10.00	111.00	4959.48	-171.17	445.92	195.67	0.00	
5100.00	10.00	111.00	5057.97	-177.39	462.13	202.78	0.00	
5200.00	10.00	111.00	5156.45	-183.62	478.34	209.89	0.00	
5300.00	10.00	111.00	5254.93	-189.84	494.55	217.01	0.00	
5400.00	10.00	111.00	5353.41	-196.06	510.76	224.12	0.00	
5500.00	10.00	111.00	5451.89	-202.29	526.98	231.23	0.00	
5600.00	10.00	111.00	5550.37	-208.51	543.19	238.35	0.00	
5630.09	10.00	111.00	5580.00	-210.38	548.06	240.49	0.00	Cherry Canyon
5677.04	10.00	111.00	5626.24	-213.30	555.68	243.82	0.00	Drop to Vertical
5700.00	9.54	111.00	5648.87	-214.70	559.31	245.42	2.00	
5800.00	7.54	111.00	5747.75	-220.02	573.18	251.51	2.00	
5900.00	5.54	111.00	5847.10	-224.10	583.81	256.17	2.00	
6000.00	3.54	111.00	5946.78	-226.94	591.20	259.42	2.00	
6100.00	1.54	111.00	6046.67	-228.53	595.34	261.23	2.00	
6177.04	0.00	111.00	6123.71	-228.90	596.31	261.65	2.00	Hold Vertical
6200.00	0.00	180.00	6146.66	-228.90	596.31	261.66	0.00	
6300.00	0.00	180.00	6246.66	-228.90	596.31	261.66	0.00	

Van Doo Dah 28-33 Fed Com 333H



Well: Van Doo Dah 28-33 Fed Com 333H
County: Lea
Wellbore: Permit Plan
Design: Permit Plan #1

Geodetic System: US State Plane 1983
Datum: North American Datum 1927
Ellipsoid: Clarke 1866
Zone: 3001 - NM East (NAD83)

MD (ft)	INC (°)	AZI (°)	TVD (ft)	NS (ft)	EW (ft)	VS (ft)	DLS (°/100ft)	Comment
6400.00	0.00	180.00	6346.66	-228.90	596.31	261.66	0.00	
6500.00	0.00	180.00	6446.66	-228.90	596.31	261.66	0.00	
6600.00	0.00	180.00	6546.66	-228.90	596.31	261.66	0.00	
6700.00	0.00	180.00	6646.66	-228.90	596.31	261.66	0.00	
6800.00	0.00	180.00	6746.66	-228.90	596.31	261.66	0.00	
6900.00	0.00	180.00	6846.66	-228.90	596.31	261.66	0.00	
7000.00	0.00	180.00	6946.66	-228.90	596.31	261.66	0.00	
7100.00	0.00	180.00	7046.66	-228.90	596.31	261.66	0.00	
7200.00	0.00	180.00	7146.66	-228.90	596.31	261.66	0.00	
7223.34	0.00	180.00	7170.00	-228.90	596.31	261.66	0.00	Brushy Canyon
7300.00	0.00	180.00	7246.66	-228.90	596.31	261.66	0.00	
7400.00	0.00	180.00	7346.66	-228.90	596.31	261.66	0.00	
7500.00	0.00	180.00	7446.66	-228.90	596.31	261.66	0.00	
7600.00	0.00	180.00	7546.66	-228.90	596.31	261.66	0.00	
7700.00	0.00	180.00	7646.66	-228.90	596.31	261.66	0.00	
7800.00	0.00	180.00	7746.66	-228.90	596.31	261.66	0.00	
7900.00	0.00	180.00	7846.66	-228.90	596.31	261.66	0.00	
8000.00	0.00	180.00	7946.66	-228.90	596.31	261.66	0.00	
8100.00	0.00	180.00	8046.66	-228.90	596.31	261.66	0.00	
8200.00	0.00	180.00	8146.66	-228.90	596.31	261.66	0.00	
8300.00	0.00	180.00	8246.66	-228.90	596.31	261.66	0.00	
8400.00	0.00	180.00	8346.66	-228.90	596.31	261.66	0.00	
8500.00	0.00	180.00	8446.66	-228.90	596.31	261.66	0.00	
8600.00	0.00	180.00	8546.66	-228.90	596.31	261.66	0.00	
8700.00	0.00	180.00	8646.66	-228.90	596.31	261.66	0.00	
8733.34	0.00	180.00	8680.00	-228.90	596.31	261.66	0.00	1st Bone Spring Lime
8800.00	0.00	180.00	8746.66	-228.90	596.31	261.66	0.00	
8900.00	0.00	180.00	8846.66	-228.90	596.31	261.66	0.00	
9000.00	0.00	180.00	8946.66	-228.90	596.31	261.66	0.00	
9100.00	0.00	180.00	9046.66	-228.90	596.31	261.66	0.00	
9200.00	0.00	180.00	9146.66	-228.90	596.31	261.66	0.00	
9300.00	0.00	180.00	9246.66	-228.90	596.31	261.66	0.00	
9400.00	0.00	180.00	9346.66	-228.90	596.31	261.66	0.00	
9500.00	0.00	180.00	9446.66	-228.90	596.31	261.66	0.00	
9600.00	0.00	180.00	9546.66	-228.90	596.31	261.66	0.00	
9700.00	0.00	180.00	9646.66	-228.90	596.31	261.66	0.00	
9718.34	0.00	180.00	9665.00	-228.90	596.31	261.66	0.00	Bone Spring 1st
9800.00	0.00	180.00	9746.66	-228.90	596.31	261.66	0.00	
9900.00	0.00	180.00	9846.66	-228.90	596.31	261.66	0.00	
10000.00	0.00	180.00	9946.66	-228.90	596.31	261.66	0.00	
10100.00	0.00	180.00	10046.66	-228.90	596.31	261.66	0.00	
10200.00	0.00	180.00	10146.66	-228.90	596.31	261.66	0.00	
10300.00	0.00	180.00	10246.66	-228.90	596.31	261.66	0.00	
10363.34	0.00	180.00	10310.00	-228.90	596.31	261.66	0.00	Bone Spring 2nd
10400.00	0.00	180.00	10346.66	-228.90	596.31	261.66	0.00	
10500.00	0.00	180.00	10446.66	-228.90	596.31	261.66	0.00	
10600.00	0.00	180.00	10546.66	-228.90	596.31	261.66	0.00	
10700.00	0.00	180.00	10646.66	-228.90	596.31	261.66	0.00	
10800.00	0.00	180.00	10746.66	-228.90	596.31	261.66	0.00	
10858.34	0.00	180.00	10805.00	-228.90	596.31	261.66	0.00	3rd Bone Spring Lime
10900.00	0.00	180.00	10846.66	-228.90	596.31	261.66	0.00	
11000.00	0.00	180.00	10946.66	-228.90	596.31	261.66	0.00	
11100.00	0.00	180.00	11046.66	-228.90	596.31	261.66	0.00	
11200.00	0.00	180.00	11146.66	-228.90	596.31	261.66	0.00	
11285.40	0.00	180.00	11232.07	-228.90	596.31	261.65	0.00	KOP
11300.00	1.46	180.00	11246.66	-229.09	596.31	261.84	10.00	
11400.00	11.46	180.00	11345.90	-240.32	596.31	273.06	10.00	
11471.60	18.62	180.00	11415.00	-258.89	596.31	291.60	10.00	Bone Spring 3rd / Point of Penetration
11500.00	21.46	180.00	11441.68	-268.62	596.31	301.32	10.00	
11600.00	31.46	180.00	11531.09	-313.12	596.31	345.75	10.00	
11700.00	41.46	180.00	11611.42	-372.47	596.31	405.01	10.00	
11800.00	51.46	180.00	11680.22	-444.87	596.31	477.29	10.00	
11900.00	61.46	180.00	11735.40	-528.11	596.31	560.41	10.00	
12000.00	71.46	180.00	11775.29	-619.67	596.31	651.83	10.00	
12100.00	81.46	180.00	11798.67	-716.77	596.31	748.77	10.00	
12179.92	89.45	180.00	11805.00	-796.38	596.31	828.25	10.00	Landing Point
12200.00	89.45	180.00	11805.19	-816.45	596.31	848.30	0.00	
12300.00	89.45	180.00	11806.15	-916.45	596.31	948.15	0.00	
12400.00	89.45	180.00	11807.11	-1016.45	596.31	1047.99	0.00	
12500.00	89.45	180.00	11808.06	-1116.44	596.31	1147.83	0.00	

Van Doo Dah 28-33 Fed Com 333H



Well: Van Doo Dah 28-33 Fed Com 333H
County: Lea
Wellbore: Permit Plan
Design: Permit Plan #1

Geodetic System: US State Plane 1983
Datum: North American Datum 1927
Ellipsoid: Clarke 1866
Zone: 3001 - NM East (NAD83)

MD (ft)	INC (")	AZI (")	TVD (ft)	NS (ft)	EW (ft)	VS (ft)	DLS (°/100ft)	Comment
12600.00	89.45	180.00	11809.02	-1216.44	596.31	1247.67	0.00	
12700.00	89.45	180.00	11809.98	-1316.43	596.31	1347.51	0.00	
12800.00	89.45	180.00	11810.93	-1416.43	596.31	1447.35	0.00	
12900.00	89.45	180.00	11811.89	-1516.42	596.31	1547.19	0.00	
13000.00	89.45	180.00	11812.85	-1616.42	596.31	1647.03	0.00	
13100.00	89.45	180.00	11813.81	-1716.41	596.31	1746.87	0.00	
13200.00	89.45	180.00	11814.76	-1816.41	596.31	1846.72	0.00	
13300.00	89.45	180.00	11815.72	-1916.40	596.31	1946.56	0.00	
13400.00	89.45	180.00	11816.68	-2016.40	596.31	2046.40	0.00	
13500.00	89.45	180.00	11817.63	-2116.40	596.31	2146.24	0.00	
13600.00	89.45	180.00	11818.59	-2216.39	596.31	2246.08	0.00	
13700.00	89.45	180.00	11819.55	-2316.39	596.31	2345.92	0.00	
13800.00	89.45	180.00	11820.50	-2416.38	596.31	2445.76	0.00	
13900.00	89.45	180.00	11821.46	-2516.38	596.31	2545.60	0.00	
14000.00	89.45	180.00	11822.42	-2616.37	596.31	2645.45	0.00	
14100.00	89.45	180.00	11823.38	-2716.37	596.31	2745.29	0.00	
14200.00	89.45	180.00	11824.33	-2816.36	596.31	2845.13	0.00	
14300.00	89.45	180.00	11825.29	-2916.36	596.31	2944.97	0.00	
14400.00	89.45	180.00	11826.25	-3016.35	596.31	3044.81	0.00	
14500.00	89.45	180.00	11827.20	-3116.35	596.32	3144.65	0.00	
14600.00	89.45	180.00	11828.16	-3216.34	596.32	3244.49	0.00	
14700.00	89.45	180.00	11829.12	-3316.34	596.32	3344.33	0.00	
14800.00	89.45	180.00	11830.08	-3416.34	596.32	3444.17	0.00	
14900.00	89.45	180.00	11831.03	-3516.33	596.32	3544.02	0.00	
15000.00	89.45	180.00	11831.99	-3616.33	596.32	3643.86	0.00	
15100.00	89.45	180.00	11832.95	-3716.32	596.32	3743.70	0.00	
15200.00	89.45	180.00	11833.90	-3816.32	596.32	3843.54	0.00	
15300.00	89.45	180.00	11834.86	-3916.31	596.32	3943.38	0.00	
15400.00	89.45	180.00	11835.82	-4016.31	596.32	4043.22	0.00	
15500.00	89.45	180.00	11836.77	-4116.30	596.32	4143.06	0.00	
15600.00	89.45	180.00	11837.73	-4216.30	596.32	4242.90	0.00	
15700.00	89.45	180.00	11838.69	-4316.29	596.32	4342.75	0.00	
15800.00	89.45	180.00	11839.65	-4416.29	596.32	4442.59	0.00	
15900.00	89.45	180.00	11840.60	-4516.29	596.32	4542.43	0.00	
16000.00	89.45	180.00	11841.56	-4616.28	596.32	4642.27	0.00	
16100.00	89.45	180.00	11842.52	-4716.28	596.32	4742.11	0.00	
16200.00	89.45	180.00	11843.47	-4816.27	596.32	4841.95	0.00	
16300.00	89.45	180.00	11844.43	-4916.27	596.32	4941.79	0.00	
16400.00	89.45	180.00	11845.39	-5016.26	596.32	5041.63	0.00	
16500.00	89.45	180.00	11846.35	-5116.26	596.32	5141.47	0.00	
16600.00	89.45	180.00	11847.30	-5216.25	596.32	5241.32	0.00	
16700.00	89.45	180.00	11848.26	-5316.25	596.32	5341.16	0.00	
16800.00	89.45	180.00	11849.22	-5416.24	596.32	5441.00	0.00	
16900.00	89.45	180.00	11850.17	-5516.24	596.32	5540.84	0.00	
17000.00	89.45	180.00	11851.13	-5616.23	596.32	5640.68	0.00	
17100.00	89.45	180.00	11852.09	-5716.23	596.32	5740.52	0.00	
17200.00	89.45	180.00	11853.04	-5816.23	596.32	5840.36	0.00	
17300.00	89.45	180.00	11854.00	-5916.22	596.32	5940.20	0.00	
17400.00	89.45	180.00	11854.96	-6016.22	596.32	6040.05	0.00	
17500.00	89.45	180.00	11855.92	-6116.21	596.32	6139.89	0.00	
17600.00	89.45	180.00	11856.87	-6216.21	596.32	6239.73	0.00	
17700.00	89.45	180.00	11857.83	-6316.20	596.32	6339.57	0.00	
17800.00	89.45	180.00	11858.79	-6416.20	596.32	6439.41	0.00	
17900.00	89.45	180.00	11859.74	-6516.19	596.32	6539.25	0.00	
18000.00	89.45	180.00	11860.70	-6616.19	596.32	6639.09	0.00	
18100.00	89.45	180.00	11861.66	-6716.18	596.32	6738.93	0.00	
18200.00	89.45	180.00	11862.61	-6816.18	596.32	6838.78	0.00	
18300.00	89.45	180.00	11863.57	-6916.18	596.33	6938.62	0.00	
18400.00	89.45	180.00	11864.53	-7016.17	596.33	7038.46	0.00	
18500.00	89.45	180.00	11865.49	-7116.17	596.33	7138.30	0.00	
18600.00	89.45	180.00	11866.44	-7216.16	596.33	7238.14	0.00	
18700.00	89.45	180.00	11867.40	-7316.16	596.33	7337.98	0.00	
18800.00	89.45	180.00	11868.36	-7416.15	596.33	7437.82	0.00	
18900.00	89.45	180.00	11869.31	-7516.15	596.33	7537.66	0.00	
19000.00	89.45	180.00	11870.27	-7616.14	596.33	7637.50	0.00	
19100.00	89.45	180.00	11871.23	-7716.14	596.33	7737.35	0.00	
19200.00	89.45	180.00	11872.19	-7816.13	596.33	7837.19	0.00	
19300.00	89.45	180.00	11873.14	-7916.13	596.33	7937.03	0.00	
19400.00	89.45	180.00	11874.10	-8016.13	596.33	8036.87	0.00	
19500.00	89.45	180.00	11875.06	-8116.12	596.33	8136.71	0.00	

Van Doo Dah 28-33 Fed Com 333H



Well: Van Doo Dah 28-33 Fed Com 333H
County: Lea
Wellbore: Permit Plan
Design: Permit Plan #1

Geodetic System: US State Plane 1983
Datum: North American Datum 1927
Ellipsoid: Clarke 1866
Zone: 3001 - NM East (NAD83)

MD (ft)	INC (°)	AZI (°)	TVD (ft)	NS (ft)	EW (ft)	VS (ft)	DLS (°/100ft)	Comment
19600.00	89.45	180.00	11876.01	-8216.12	596.33	8236.55	0.00	
19700.00	89.45	180.00	11876.97	-8316.11	596.33	8336.39	0.00	
19800.00	89.45	180.00	11877.93	-8416.11	596.33	8436.23	0.00	
19900.00	89.45	180.00	11878.88	-8516.10	596.33	8536.08	0.00	
20000.00	89.45	180.00	11879.84	-8616.10	596.33	8635.92	0.00	
20100.00	89.45	180.00	11880.80	-8716.09	596.33	8735.76	0.00	
20200.00	89.45	180.00	11881.76	-8816.09	596.33	8835.60	0.00	
20300.00	89.45	180.00	11882.71	-8916.08	596.33	8935.44	0.00	
20400.00	89.45	180.00	11883.67	-9016.08	596.33	9035.28	0.00	
20500.00	89.45	180.00	11884.63	-9116.07	596.33	9135.12	0.00	
20600.00	89.45	180.00	11885.58	-9216.07	596.33	9234.96	0.00	
20700.00	89.45	180.00	11886.54	-9316.07	596.33	9334.80	0.00	
20800.00	89.45	180.00	11887.50	-9416.06	596.33	9434.65	0.00	
20900.00	89.45	180.00	11888.46	-9516.06	596.33	9534.49	0.00	
21000.00	89.45	180.00	11889.41	-9616.05	596.33	9634.33	0.00	
21100.00	89.45	180.00	11890.37	-9716.05	596.33	9734.17	0.00	
21200.00	89.45	180.00	11891.33	-9816.04	596.33	9834.01	0.00	
21300.00	89.45	180.00	11892.28	-9916.04	596.33	9933.85	0.00	
21400.00	89.45	180.00	11893.24	-10016.03	596.33	10033.69	0.00	
21500.00	89.45	180.00	11894.20	-10116.03	596.33	10133.53	0.00	
21600.00	89.45	180.00	11895.15	-10216.02	596.33	10233.38	0.00	
21700.00	89.45	180.00	11896.11	-10316.02	596.33	10333.22	0.00	
21800.00	89.45	180.00	11897.07	-10416.02	596.33	10433.06	0.00	
21900.00	89.45	180.00	11898.03	-10516.01	596.33	10532.90	0.00	
22000.00	89.45	180.00	11898.98	-10616.01	596.33	10632.74	0.00	
22027.65	89.45	180.00	11899.25	-10643.66	596.33	10660.35	0.00	EXIT
22100.00	89.45	180.00	11899.94	-10716.00	596.34	10732.58	0.00	
22107.65	89.45	180.00	11900.00	-10723.65	596.31	10740.22	0.00	BHL

13-5/8" 5M BOPE & Closed Loop Equipment Schematic



A multibowl wellhead may be used. The BOP will be tested per Onshore Order #2 after installation on the surface casing which will cover testing requirements for a maximum of 30 days. If any seal subject to test pressure is broken the system must be tested.

Devon proposes using a multi-bowl wellhead assembly. This assembly will only be tested when installed on the surface casing. Minimum working pressure of the blowout preventer (BOP) and related equipment (BOPE) required for drilling below the surface casing shoe shall be 5000 (5M) psi.

- Wellhead will be installed by wellhead representatives.
- If the welding is performed by a third party, the wellhead representative will monitor the temperature to verify that it does not exceed the maximum temperature of the seal.
- Wellhead representative will install the test plug for the initial BOP test.
- Wellhead company will install a solid steel body pack-off to completely isolate the lower head after cementing intermediate casing. After installation of the pack-off, the pack-off and the lower flange will be tested to 5M, as shown on the attached schematic. Everything above the pack-off will not have been altered whatsoever from the initial nipple up. Therefore the BOP components will not be retested at that time.
- If the cement does not circulate and one inch operations would have been possible with a standard wellhead, the well head will be cut and top out operations will be conducted.
- Devon will pressure test all seals above and below the mandrel (but still above the casing) to full working pressure rating.
- Devon will test the casing to 0.22 psi/ft or 1500 psi, whichever is greater, as per Onshore Order #2.

After running the surface casing, a 13-5/8" BOP/BOPE system with a minimum rating of 5M will be installed on the wellhead system and will undergo a 250 psi low pressure test followed by a 5,000 psi high pressure test. The 5,000 psi high and 250 psi low test will cover testing requirements a maximum of 30 days, as per Onshore Order #2. If the well is not complete within 30 days of this BOP test, another full BOP test will be conducted, as per Onshore Order #2.

After running the intermediate casing with a mandrel hanger, the 13-5/8" BOP/BOPE system with a minimum rating of 5M will already be installed on the wellhead.

The pipe rams will be operated and checked each 24 hour period and each time the drill pipe is out of the hole. These tests will be logged in the daily driller's log. A 2" kill line and 3" choke line will be incorporated into the drilling spool below the ram BOP. In addition to the rams and annular preventer, additional BOP accessories include a kelly cock, floor safety valve, choke lines, and choke manifold rated at 5,000 psi WP.

Devon's proposed wellhead manufactures will be FMC Technologies, Cactus Wellhead, or Cameron.

INFORMATION CONTAINED HEREIN IS THE PROPERTY OF CACTUS WELLHEAD, LLC. REPRODUCTION, DISCLOSURE, OR USE THEREOF IS PERMISSIBLE ONLY AS PROVIDED BY CONTRACT OR AS EXPRESSLY AUTHORIZED BY CACTUS WELLHEAD, LLC.

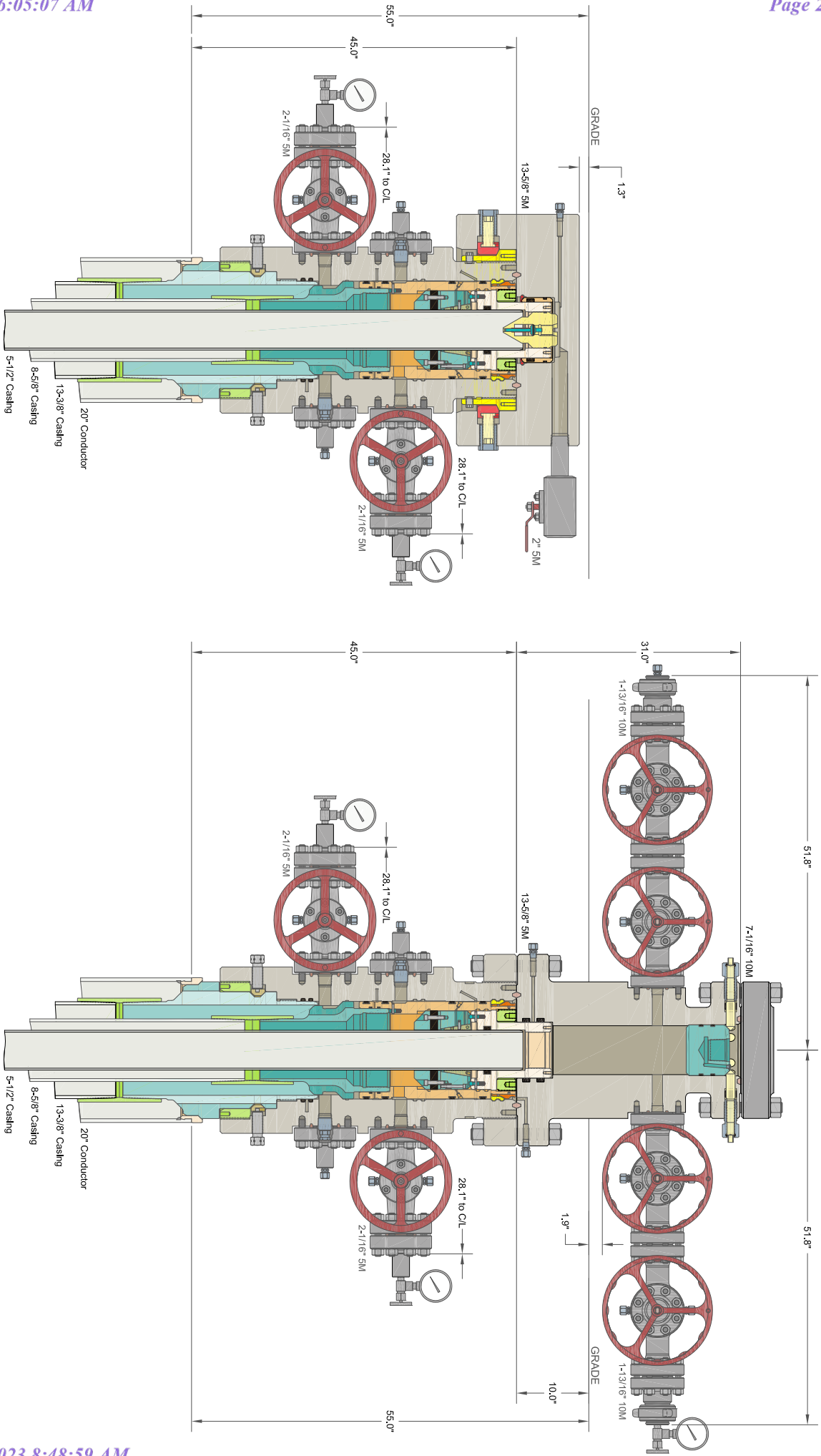
CACTUS WELLHEAD LLC

20" x 13-3/8" x 8-5/8" x 5-1/2" MBU-3T-CFL-R-DBLO Wellhead Sys.
With Quick Connect Top TA Cap, 5-1/2" Emergency Slip Hanger
And 13-5/8" 5M x 7-1/16" 10M CTH-DBLHPS Tubing Head

DEVON ENERGY CORPORATION
DELAWARE BASIN

DRAWN	DLE	25FEB19
APPRV		
DRAWING NO.	SDT-1929	

ALL DIMENSIONS APPROXIMATE



PECOS DISTRICT DRILLING CONDITIONS OF APPROVAL

OPERATOR'S NAME:	Devon Energy Production Company LP
LEASE NO.:	NMLC0062300
LOCATION:	Section 21, T.25 S., R.32 E., NMPM
COUNTY:	Lea County, New Mexico

WELL NAME & NO.:	Van Doo Dah 28-33 Fed Com 333H
SURFACE HOLE FOOTAGE:	200'S & 1540'/W
BOTTOM HOLE FOOTAGE:	20'S & 2070'/W
ATS/API ID:	ATS-22-222
Sundry ID:	N/A

COA

H2S	<input checked="" type="checkbox"/> Yes	<input type="checkbox"/> No	
Potash	<input checked="" type="checkbox"/> None	<input type="checkbox"/> Secretary	<input type="checkbox"/> R-111-P
Cave/Karst Potential	<input checked="" type="checkbox"/> Low	<input type="checkbox"/> Medium	<input type="checkbox"/> High
Cave/Karst Potential	<input type="checkbox"/> Critical		
Variance	<input type="checkbox"/> None	<input checked="" type="checkbox"/> Flex Hose	<input type="checkbox"/> Other
Wellhead	<input type="checkbox"/> Conventional	<input type="checkbox"/> Multibowl	<input checked="" type="checkbox"/> Both
Wellhead Variance	<input type="checkbox"/> Diverter		
Other	<input type="checkbox"/> 4 String	<input type="checkbox"/> Capitan Reef	<input type="checkbox"/> WIPP
Other	<input checked="" type="checkbox"/> Fluid Filled	<input type="checkbox"/> Pilot Hole	<input type="checkbox"/> Open Annulus
Cementing	<input checked="" type="checkbox"/> Cement Squeeze	<input type="checkbox"/> EchoMeter	
Special Requirements	<input type="checkbox"/> Water Disposal	<input checked="" type="checkbox"/> COM	<input type="checkbox"/> Unit
Special Requirements Variance	<input type="checkbox"/> Break Testing	<input type="checkbox"/> Offline Cementing	

A. HYDROGEN SULFIDE

A Hydrogen Sulfide (H2S) Drilling Plan shall be activated 500 feet prior to drilling into the **Delaware** formation. As a result, the Hydrogen Sulfide area must meet Onshore Order 6 requirements, which includes equipment and personnel/public protection items. If Hydrogen Sulfide is encountered, please provide measured values and formations to the BLM.

B. CASING

1. The **13-3/8 inch** surface casing shall be set at approximately **1075 feet** (a minimum of **25 feet (Lea County)** into the Rustler Anhydrite, above the salt, and below usable fresh water) and cemented to the surface.
 - a. If cement does not circulate to the surface, the appropriate BLM office shall be notified and a temperature survey utilizing an electronic type temperature survey with surface log readout will be used or a cement bond log shall be run to verify the top of the cement. Temperature survey will be run a minimum of six hours after pumping cement and ideally between 8-10 hours after completing the cement job.
 - b. Wait on cement (WOC) time for a primary cement job will be a minimum of **8 hours** or 500 pounds compressive strength, whichever is greater. (This is to include the lead cement)
 - c. Wait on cement (WOC) time for a remedial job will be a minimum of 4 hours after bringing cement to surface or 500 pounds compressive strength, whichever is greater.
 - d. If cement falls back, remedial cementing will be done prior to drilling out that string.

Intermediate casing must be kept fluid filled to meet BLM minimum collapse requirement.

2. The minimum required fill of cement behind the **8-5/8 inch** intermediate casing is:
 - Cement to surface. If cement does not circulate see B.1.a, c-d above. **Cement excess is less than 25%, more cement is required if washout occurs. Adjust cement volume and excess based on a fluid caliper or similar method that reflects the as-drilled size of the wellbore.**

Operator has proposed to pump down 13-3/8" X 8-5/8" annulus after primary cementing stage. Operator must run a CBL from TD of the 8-5/8" casing to surface. Submit results to the BLM.

If cement does not tie-back into the previous casing shoe, a third stage remediation BH may be performed. The appropriate BLM office shall be notified.

3. The minimum required fill of cement behind the **5-1/2 inch** production casing is:
 - Cement should tie-back at least **200 feet** into previous casing string. Operator shall provide method of verification. **Cement excess is less than 25%, more cement is required if washout occurs. Adjust cement volume and excess based on a fluid caliper or similar method that reflects the as-drilled size of the wellbore.**

C. PRESSURE CONTROL

1. Variance approved to use flex line from BOP to choke manifold. Manufacturer's specification to be readily available. No external damage to flex line. Flex line to be installed as straight as possible (no hard bends).'
- 2.

Option 1:

- a. Minimum working pressure of the blowout preventer (BOP) and related equipment (BOPE) required for drilling below the surface casing shoe shall be **5000 (5M)** psi.
- b. Minimum working pressure of the blowout preventer (BOP) and related equipment (BOPE) required for drilling below the **8-5/8** inch intermediate casing shoe shall be **5000 (5M)** psi.

Option 2:

Operator has proposed a multi-bowl wellhead assembly. This assembly will only be tested when installed on the **13-3/8** inch surface casing. Minimum working pressure of the blowout preventer (BOP) and related equipment (BOPE) required for drilling below the surface casing shoe shall be **5000 (5M)** psi.

- a. Wellhead shall be installed by manufacturer's representatives, submit documentation with subsequent sundry.
- b. If the welding is performed by a third party, the manufacturer's representative shall monitor the temperature to verify that it does not exceed the maximum temperature of the seal.
- c. Manufacturer representative shall install the test plug for the initial BOP test.
- d. If the cement does not circulate and one inch operations would have been possible with a standard wellhead, the well head shall be cut off, cementing operations performed and another wellhead installed.
- e. Whenever any seal subject to test pressure is broken, all the tests in OOGO2.III.A.2.i must be followed.

D. SPECIAL REQUIREMENT (S)

Communitization Agreement

- The operator will submit a Communitization Agreement to the Santa Fe Office, 301 Dinosaur Trail Santa Fe, New Mexico 87508, at least 90 days before the anticipated date of first production from a well subject to a spacing order issued by the New Mexico Oil Conservation Division. The Communitization Agreement will include the signatures of all working interest owners in all Federal and Indian leases subject to the Communitization Agreement (i.e., operating rights owners and lessees of record),

or certification that the operator has obtained the written signatures of all such owners and will make those signatures available to the BLM immediately upon request.

- If the operator does not comply with this condition of approval, the BLM may take enforcement actions that include, but are not limited to, those specified in 43 CFR 3163.1.
- In addition, the well sign shall include the surface and bottom hole lease numbers. When the Communitization Agreement number is known, it shall also be on the sign.

GENERAL REQUIREMENTS

The BLM is to be notified in advance for a representative to witness:

- a. Spudding well (minimum of 24 hours)
- b. Setting and/or Cementing of all casing strings (minimum of 4 hours)
- c. BOPE tests (minimum of 4 hours)

☒ Eddy County

Call the Carlsbad Field Office, 620 East Greene St., Carlsbad, NM 88220,
(575) 361-2822

☒ Lea County

Call the Hobbs Field Station, 414 West Taylor, Hobbs NM 88240, (575)
689-5981

1. Unless the production casing has been run and cemented or the well has been properly plugged, the drilling rig shall not be removed from over the hole without prior approval.
 - a. In the event the operator has proposed to drill multiple wells utilizing a skid/walking rig. Operator shall secure the wellbore on the current well, after installing and testing the wellhead, by installing a blind flange of like pressure rating to the wellhead and a pressure gauge that can be monitored while drilling is performed on the other well(s).
 - b. When the operator proposes to set surface casing with Spudder Rig
 - Notify the BLM when moving in and removing the Spudder Rig.
 - Notify the BLM when moving in the 2nd Rig. Rig to be moved in within 90 days of notification that Spudder Rig has left the location.
 - BOP/BOPE test to be conducted per Onshore Oil and Gas Order No. 2 as soon as 2nd Rig is rigged up on well.
2. Floor controls are required for 3M or Greater systems. These controls will be on the rig floor, unobstructed, readily accessible to the driller and will be operational at all times during drilling and/or completion activities. Rig floor is defined as the area immediately around the rotary table; the area immediately above the substructure on which the draw works are located, this does not include the dog house or stairway area.
3. The record of the drilling rate along with the GR/N well log run from TD to surface (horizontal well – vertical portion of hole) shall be submitted to the BLM office as well as all other logs run on the borehole 30 days from completion. If available, a digital copy of the logs is to be submitted in addition to the paper copies. The Rustler top and top and bottom of Salt are to be recorded on the Completion Report.

A. CASING

1. Changes to the approved APD casing program need prior approval if the items substituted are of lesser grade or different casing size or are Non-API. The Operator can exchange the components of the proposal with that of superior strength (i.e. changing from J-55 to N-80, or from 36# to 40#). Changes to the approved cement program need prior approval if the altered cement plan has less volume or strength or if the changes are substantial (i.e. Multistage tool, ECP, etc.). The initial wellhead installed on the well will remain on the well with spools used as needed.
2. Wait on cement (WOC) for Potash Areas: After cementing but before commencing any tests, the casing string shall stand cemented under pressure until both of the following conditions have been met: 1) cement reaches a minimum compressive strength of 500 psi for all cement blends, 2) until cement has been in place at least 24 hours. WOC time will be recorded in the driller's log. The casing integrity test can be done (prior to the cement setting up) immediately after bumping the plug.
3. Wait on cement (WOC) for Water Basin: After cementing but before commencing any tests, the casing string shall stand cemented under pressure until both of the following conditions have been met: 1) cement reaches a minimum compressive strength of 500 psi at the shoe, 2) until cement has been in place at least 8 hours. WOC time will be recorded in the driller's log. See individual casing strings for details regarding lead cement slurry requirements. The casing integrity test can be done (prior to the cement setting up) immediately after bumping the plug.
4. Provide compressive strengths including hours to reach required 500 pounds compressive strength prior to cementing each casing string. Have well specific cement details onsite prior to pumping the cement for each casing string.
5. No pea gravel permitted for remedial or fall back remedial without prior authorization from the BLM engineer.
6. On that portion of any well approved for a 5M BOPE system or greater, a pressure integrity test of each casing shoe shall be performed. Formation at the shoe shall be tested to a minimum of the mud weight equivalent anticipated to control the formation pressure to the next casing depth or at total depth of the well. This test shall be performed before drilling more than 20 feet of new hole.
7. If hardband drill pipe is rotated inside casing, returns will be monitored for metal. If metal is found in samples, drill pipe will be pulled and rubber protectors which have a larger diameter than the tool joints of the drill pipe will be installed prior to continuing drilling operations.
8. Whenever a casing string is cemented in the R-111-P potash area, the NMOCD requirements shall be followed.

B. PRESSURE CONTROL

1. All blowout preventer (BOP) and related equipment (BOPE) shall comply with well control requirements as described in Onshore Oil and Gas Order No. 2 and API RP 53 Sec. 17.
2. If a variance is approved for a flexible hose to be installed from the BOP to the choke manifold, the following requirements apply: The flex line must meet the requirements of API 16C. Check condition of flexible line from BOP to choke manifold, replace if exterior is damaged or if line fails test. Line to be as straight as possible with no hard bends and is to be anchored according to Manufacturer's requirements. The flexible hose can be exchanged with a hose of equal size and equal or greater pressure rating. Anchor requirements, specification sheet and hydrostatic pressure test certification matching the hose in service, to be onsite for review. These documents shall be posted in the company man's trailer and on the rig floor.
3. 5M or higher system requires an HCR valve, remote kill line and annular to match. The remote kill line is to be installed prior to testing the system and tested to stack pressure.
4. If the operator has proposed a multi-bowl wellhead assembly in the APD. The following requirements must be met:
 - a. Wellhead shall be installed by manufacturer's representatives, submit documentation with subsequent sundry.
 - b. If the welding is performed by a third party, the manufacturer's representative shall monitor the temperature to verify that it does not exceed the maximum temperature of the seal.
 - c. Manufacturer representative shall install the test plug for the initial BOP test.
 - d. Whenever any seal subject to test pressure is broken, all the tests in OOGO2.III.A.2.i must be followed.
 - e. If the cement does not circulate and one inch operations would have been possible with a standard wellhead, the well head shall be cut off, cementing operations performed and another wellhead installed.
5. The appropriate BLM office shall be notified a minimum of 4 hours in advance for a representative to witness the tests.
 - a. In a water basin, for all casing strings utilizing slips, these are to be set as soon as the crew and rig are ready and any fallback cement remediation has been done. The casing cut-off and BOP installation can be initiated four hours after installing the slips, which will be approximately six hours after bumping the plug. For those casing strings not using slips, the minimum wait time before cut-off is eight hours after bumping the plug. BOP/BOPE testing can begin after cut-off or once cement reaches 500 psi compressive strength (including lead when specified), whichever is greater. However, if the float does not

hold, cut-off cannot be initiated until cement reaches 500 psi compressive strength (including lead when specified).

- b. In potash areas, for all casing strings utilizing slips, these are to be set as soon as the crew and rig are ready and any fallback cement remediation has been done. For all casing strings, casing cut-off and BOP installation can be initiated at twelve hours after bumping the plug. However, **no tests** shall commence until the cement has had a minimum of 24 hours setup time, except the casing pressure test can be initiated immediately after bumping the plug (only applies to single stage cement jobs).
- c. The tests shall be done by an independent service company utilizing a test plug not a cup or J-packer. The operator also has the option of utilizing an independent tester to test without a plug (i.e. against the casing) pursuant to Onshore Order 2 with the pressure not to exceed 70% of the burst rating for the casing. Any test against the casing must meet the WOC time for water basin (8 hours) or potash (24 hours) or 500 pounds compressive strength, whichever is greater, prior to initiating the test (see casing segment as lead cement may be critical item).
- d. The test shall be run on a 5000 psi chart for a 2-3M BOP/BOP, on a 10000 psi chart for a 5M BOP/BOPE and on a 15000 psi chart for a 10M BOP/BOPE. If a linear chart is used, it shall be a one hour chart. A circular chart shall have a maximum 2 hour clock. If a twelve hour or twenty-four hour chart is used, tester shall make a notation that it is run with a two hour clock.
- e. The results of the test shall be reported to the appropriate BLM office.
- f. All tests are required to be recorded on a calibrated test chart. A copy of the BOP/BOPE test chart and a copy of independent service company test will be submitted to the appropriate BLM office.
- g. The BOP/BOPE test shall include a low pressure test from 250 to 300 psi. The test will be held for a minimum of 10 minutes if test is done with a test plug and 30 minutes without a test plug. This test shall be performed prior to the test at full stack pressure.
- h. BOP/BOPE must be tested by an independent service company within 500 feet of the top of the Wolfcamp formation if the time between the setting of the intermediate casing and reaching this depth exceeds 20 days. This test does not exclude the test prior to drilling out the casing shoe as per Onshore Order No. 2.

C. DRILLING MUD

Mud system monitoring equipment, with derrick floor indicators and visual and audio alarms, shall be operating before drilling into the Wolfcamp formation, and shall be used until production casing is run and cemented.

D. WASTE MATERIAL AND FLUIDS

All waste (i.e. drilling fluids, trash, salts, chemicals, sewage, gray water, etc.) created as a result of drilling operations and completion operations shall be safely contained and disposed of properly at a waste disposal facility. No waste material or fluid shall be disposed of on the well location or surrounding area.

Porto-johns and trash containers will be on-location during fracturing operations or any other crew-intensive operations.

LVO 7/13/2022



**Devon Energy Center
333 West Sheridan Avenue
Oklahoma City, Oklahoma 73102-5015**

Hydrogen Sulfide (H₂S) Contingency Plan

For

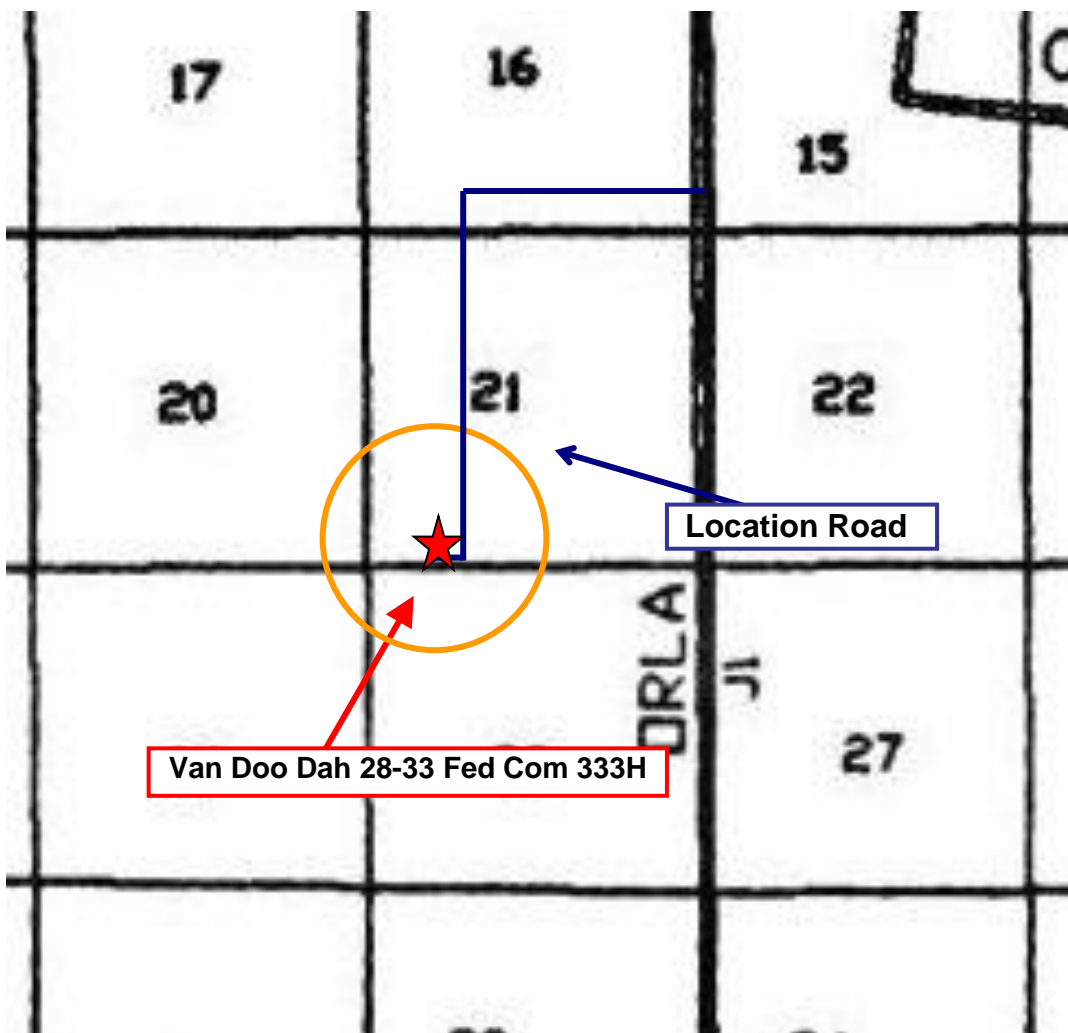
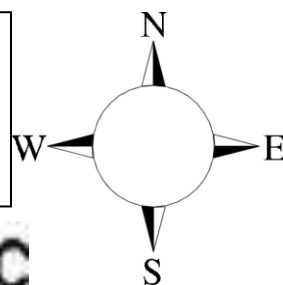
Van Doo Dah 28-33 Fed Com 333H

**Sec-21 T-25S R-32E
200' FSL & 1540' FWL
LAT. = 32.1091753' N (NAD83)
LONG = 103.6837113' W**

Lea County NM

Van Doo Dah 28-33 Fed Com 333H

This is an open drilling site. H₂S monitoring equipment and emergency response equipment will be used within 500' of zones known to contain H₂S, including warning signs, wind indicators and H₂S monitor.



Assumed 100 ppm ROE = 3000' (Radius of Exposure)
100 ppm H₂S concentration shall trigger activation of this plan.

Escape

Crews shall escape upwind of escaping gas in the event of an emergency release of gas. Escape can be facilitated from the location entrance road. Crews should then block the entrance to the location from the lease road so as not to allow anyone traversing into a hazardous area. The blockade should be at a safe distance outside of the ROE. There are no homes or buildings in or near the ROE.

Assumed 100 ppm ROE = 3000'

100 ppm H₂S concentration shall trigger activation of this plan.

Emergency Procedures

In the event of a release of gas containing H₂S, the first responder(s) must

- Isolate the area and prevent entry by other persons into the 100 ppm ROE.
- Evacuate any public places encompassed by the 100 ppm ROE.
- Be equipped with H₂S monitors and air packs in order to control the release.
- Use the “buddy system” to ensure no injuries occur during the response
- Take precautions to avoid personal injury during this operation.
- Contact operator and/or local officials to aid in operation. See list of phone numbers attached.
- Have received training in the
 - Detection of H₂S, and
 - Measures for protection against the gas,
 - Equipment used for protection and emergency response.

Ignition of Gas Source

Should control of the well be considered lost and ignition considered, take care to protect against exposure to Sulfur Dioxide (SO₂). Intentional ignition must be coordinated with the NMOCD and local officials. Additionally the NM State Police may become involved. NM State Police shall be the Incident Command on scene of any major release. Take care to protect downwind whenever there is an ignition of the gas

Characteristics of H₂S and SO₂

Common Name	Chemical Formula	Specific Gravity	Threshold Limit	Hazardous Limit	Lethal Concentration
Hydrogen Sulfide	H ₂ S	1.189 Air = 1	10 ppm	100 ppm/hr	600 ppm
Sulfur Dioxide	SO ₂	2.21 Air = 1	2 ppm	N/A	1000 ppm

Contacting Authorities

Devon Energy Corp. personnel must liaison with local and state agencies to ensure a proper response to a major release. Additionally, the OCD must be notified of the release as soon as possible but no later than 4 hours. Agencies will ask for information such as type and volume of release, wind direction, location of release, etc. Be prepared with all information available. The following call list of essential and potential responders has been prepared for use during a release. Devon Energy Corp. Company response must be in coordination with the State of New Mexico's 'Hazardous Materials Emergency Response Plan' (HMER)

Hydrogen Sulfide Drilling Operation Plan

I. HYDROGEN SULFIDE (H₂S) TRAINING

All personnel, whether regularly assigned, contracted, or employed on an unscheduled basis, will receive training from a qualified instructor in the following areas prior to commencing drilling operations on this well:

1. The hazards and characteristics of hydrogen sulfide (H₂S)
2. The proper use and maintenance of personal protective equipment and life support systems.
3. The proper use of H₂S detectors, alarms, warning systems, briefing areas, evacuation procedures, and prevailing winds.
4. The proper techniques for first aid and rescue procedures.

In addition, supervisory personnel will be trained in the following areas:

1. The effects of H₂S metal components. If high tensile tubulars are to be used, personnel will be trained in their special maintenance requirements.
2. Corrective action and shut-in procedures when drilling or reworking a well and blowout prevention and well control procedures.
3. The contents and requirements of the H₂S Drilling Operations Plan and Public Protection Plan.

There will be an initial training session just prior to encountering a known or probable H₂S zone (within 3 days or 500 feet) and weekly H₂S and well control drills for all personnel in each crew. The initial training session shall include a review of the site specific H₂S Drilling Operations Plan and the Public Protection Plan.

II. HYDROGEN SULFIDE TRAINING

Note: All H₂S safety equipment and systems will be installed, tested, and operational when drilling reaches a depth of 500 feet above, or three days prior to penetrating the first zone containing or reasonably expected to contain H₂S.

1. Well Control Equipment

- A. Flare line
- B. Choke manifold – Remotely Operated
- C. Blind rams and pipe rams to accommodate all pipe sizes with properly sized closing unit
- D. Auxiliary equipment may include if applicable: annular preventer and rotating head.
- E. Mud/Gas Separator

2. Protective equipment for essential personnel:

30-minute SCBA units located at briefing areas, as indicated on well site diagram, with escape units available in the top doghouse. As it may be difficult to communicate audibly while wearing these units, hand signals shall be utilized.

3. H₂S detection and monitoring equipment:

Portable H₂S monitors positioned on location for best coverage and response. These units have warning lights which activate when H₂S levels reach 10 ppm and audible sirens which activate at 15 ppm. Sensor locations:

- Bell nipple
- Possum Belly/Shale shaker
- Rig floor
- Choke manifold
- Cellar

Visual warning systems:

- A. Wind direction indicators as shown on well site diagram
- B. Caution/ Danger signs shall be posted on roads providing direct access to locations. Signs will be painted a high visibility yellow with black lettering of sufficient size to be reasonable distance from the immediate location. Bilingual signs will be used when appropriate.

4. Mud program:

The mud program has been designed to minimize the volume of H₂S circulated to surface. Proper mud weight, safe drilling practices and the use of H₂S scavengers will minimize hazards when penetrating H₂S bearing zones.

5. Metallurgy:

- A. All drill strings, casings, tubing, wellhead, blowout preventer, drilling spool, kill lines, choke manifold lines, and valves shall be H₂S trim.
- B. All elastomers used for packing and seals shall be H₂S trim.

6. Communication:

- A. Company personnel have/use cellular telephones in the field.
- B. Land line (telephone) communications at Office

7. Well testing:

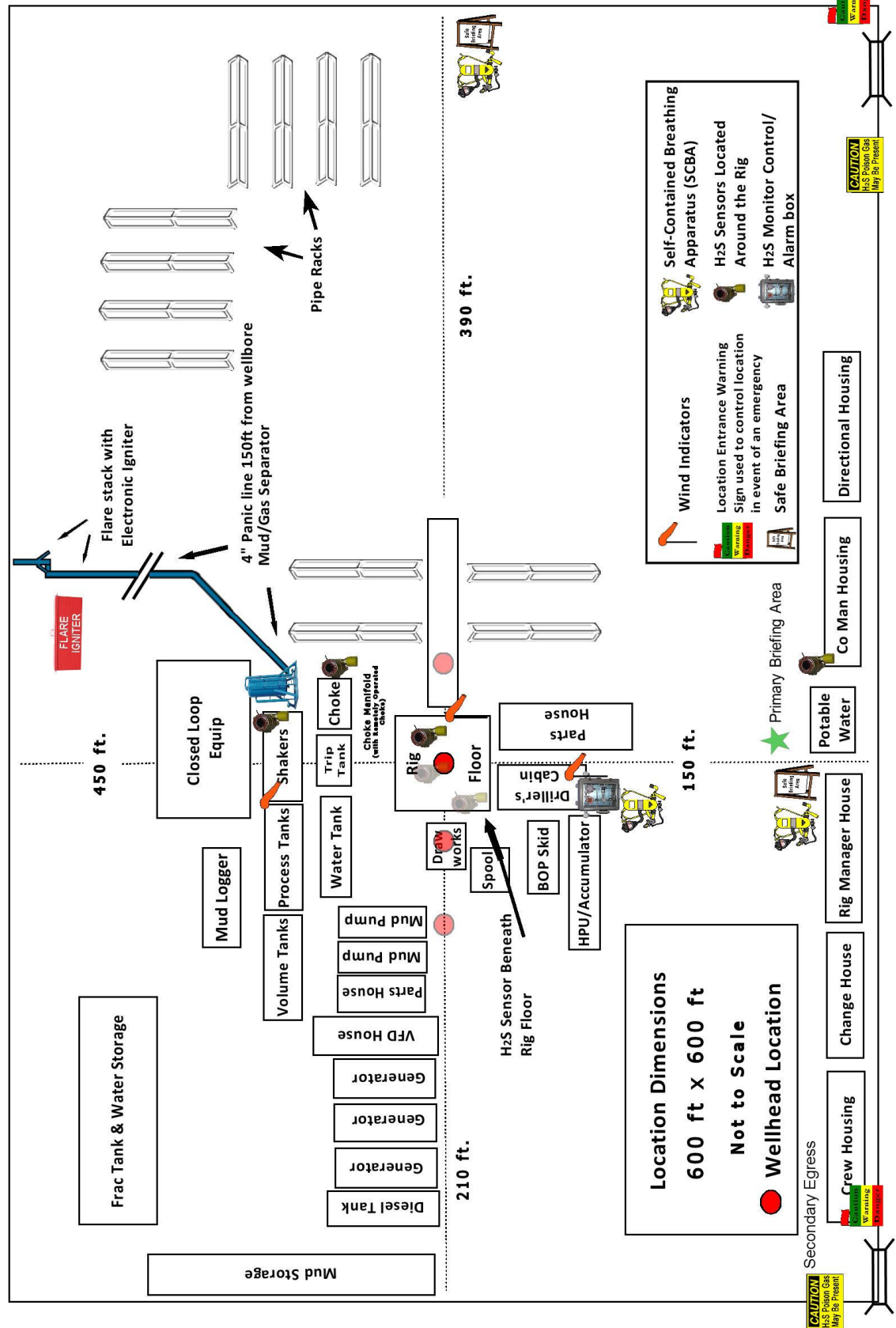
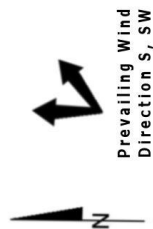
- A. Drill stem testing will be performed with a minimum number of personnel in the immediate vicinity, which are necessary to safety and adequately conduct the test. The drill stem testing will be conducted during daylight hours and formation fluids will not be flowed to the surface. All drill-stem-testing operations conducted in an H₂S environment will use the closed chamber method of testing.
- B. There will be no drill stem testing.

<u>Devon Energy Corp. Company Call List</u>		
Drilling Supervisor – Basin – Mark Kramer		405-823-4796
EHS Professional – Laura Wright		405-439-8129
<u>Agency Call List</u>		
<u>Lea County (575)</u>	Hobbs	
	Lea County Communication Authority	393-3981
	State Police	392-5588
	City Police	397-9265
	Sheriff's Office	393-2515
	Ambulance	911
	Fire Department	397-9308
	LEPC (Local Emergency Planning Committee)	393-2870
	NMOCD	393-6161
	US Bureau of Land Management	393-3612
<u>Eddy County (575)</u>	Carlsbad	
	State Police	885-3137
	City Police	885-2111
	Sheriff's Office	887-7551
	Ambulance	911
	Fire Department	885-3125
	LEPC (Local Emergency Planning Committee)	887-3798
	US Bureau of Land Management	887-6544
	NM Emergency Response Commission (Santa Fe)	(505) 476-9600
	24 HR	(505) 827-9126
	National Emergency Response Center	(800) 424-8802
	National Pollution Control Center: Direct	(703) 872-6000
	For Oil Spills	(800) 280-7118
	Emergency Services	
	Wild Well Control	(281) 784-4700
	Cudd Pressure Control	(915) 699-0139 (915) 563-3356
	Halliburton	(575) 746-2757
	B. J. Services	(575) 746-3569
	Give GPS position:	
	Native Air – Emergency Helicopter – Hobbs (TX & NM)	(800) 642-7828
	Flight For Life - Lubbock, TX	(806) 743-9911
	Aerocare - Lubbock, TX	(806) 747-8923
	Med Flight Air Amb - Albuquerque, NM	(575) 842-4433
	Lifeguard Air Med Svc. Albuquerque, NM	(800) 222-1222
	Poison Control (24/7)	(575) 272-3115
	Oil & Gas Pipeline 24 Hour Service	(800) 364-4366
	NOAA – Website - www.nhc.noaa.gov	

Prepared in conjunction with
Dave Small



Devon Energy - Well Pad Rig Location Layout Safety Equipment Location



District I
1625 N. French Dr., Hobbs, NM 88240
Phone:(575) 393-6161 Fax:(575) 393-0720
District II
811 S. First St., Artesia, NM 88210
Phone:(575) 748-1283 Fax:(575) 748-9720
District III
1000 Rio Brazos Rd., Aztec, NM 87410
Phone:(505) 334-6178 Fax:(505) 334-6170
District IV
1220 S. St Francis Dr., Santa Fe, NM 87505
Phone:(505) 476-3470 Fax:(505) 476-3462

State of New Mexico
Energy, Minerals and Natural Resources
Oil Conservation Division
1220 S. St Francis Dr.
Santa Fe, NM 87505

CONDITIONS

Action 249313

CONDITIONS

Operator: DEVON ENERGY PRODUCTION COMPANY, LP 333 West Sheridan Ave. Oklahoma City, OK 73102	OGRID: 6137
	Action Number: 249313
	Action Type: [C-101] BLM - Federal/Indian Land Lease (Form 3160-3)

CONDITIONS

Created By	Condition	Condition Date
pkautz	IF ON ANY STRING CEMENT DOES NOT CIRCULATE, A CBL MUST BE RUN ON THAT STRING OF CASING.	8/11/2023
pkautz	Will require a File As Drilled C-102 and a Directional Survey with the C-104	8/11/2023
pkautz	Once the well is spud, to prevent ground water contamination through whole or partial conduits from the surface, the operator shall drill without interruption through the fresh water zone or zones and shall immediately set in cement the water protection string	8/11/2023
pkautz	Oil base muds are not to be used until fresh water zones are cased and cemented providing isolation from the oil or diesel. This includes synthetic oils. Oil based mud, drilling fluids and solids must be contained in a steel closed loop system	8/11/2023
pkautz	Cement is required to circulate on both surface and intermediate1 strings of casing	8/11/2023