

Office
District I - (575) 393-6161
1625 N. French Dr., Hobbs, NM 88240
District II - (575) 748-1283
811 S. First St., Artesia, NM 88210
District III - (505) 334-6178
1000 Rio Brazos Rd., Aztec, NM 87410
District IV - (505) 476-3460
1220 S. St. Francis Dr., Santa Fe, NM 87505

State of New Mexico
Energy, Minerals and Natural Resources

Form C-103
Revised July 18, 2013

OIL CONSERVATION DIVISION
1220 South St. Francis Dr.
Santa Fe, NM 87505

WELL API NO. 30-015-46432
5. Indicate Type of Lease STATE [X] FEE [ ]
6. State Oil & Gas Lease No.
7. Lease Name or Unit Agreement Name James Ranch Unit 6 Torino Fee SWD
8. Well Number #001
9. OGRID Number 373075
10. Pool name or Wildcat SWD;DEVONIAN
11. Elevation (Show whether DR, RKB, RT, GR, etc.) 3302'GL

SUNDRY NOTICES AND REPORTS ON WELLS
(DO NOT USE THIS FORM FOR PROPOSALS TO DRILL OR TO DEEPEN OR PLUG BACK TO A DIFFERENT RESERVOIR. USE "APPLICATION FOR PERMIT" (FORM C-101) FOR SUCH PROPOSALS.)
1. Type of Well: Oil Well [ ] Gas Well [X] Other SWD
2. Name of Operator XTO Permian Operating, LLC
3. Address of Operator 6401 Holiday Hill Rd, bldg 5 Midland Tx 79707
4. Well Location Unit Letter K : 2211 feet from the South line and 1402 feet from the West line Section 6 Township 23S Range 31E NMPM County Eddy
11. Elevation (Show whether DR, RKB, RT, GR, etc.) 3302'GL

12. Check Appropriate Box to Indicate Nature of Notice, Report or Other Data

NOTICE OF INTENTION TO:
PERFORM REMEDIAL WORK [ ] PLUG AND ABANDON [ ]
TEMPORARILY ABANDON [ ] CHANGE PLANS [ ]
PULL OR ALTER CASING [ ] MULTIPLE COMPL [ ]
DOWNHOLE COMMINGLE [ ]
CLOSED-LOOP SYSTEM [ ]
OTHER: [ ]
SUBSEQUENT REPORT OF:
REMEDIAL WORK [ ] ALTERING CASING [ ]
COMMENCE DRILLING OPNS. [ ] P AND A [ ]
CASING/CEMENT JOB [ ]
OTHER: BHP measurement & Inj Commencement [X]

13. Describe proposed or completed operations. (Clearly state all pertinent details, and give pertinent dates, including estimated date of starting any proposed work). SEE RULE 19.15.7.14 NMAC. For Multiple Completions: Attach wellbore diagram of proposed completion or recompletion.

XTO Permian Operating LLC respectfully submits the bottom-hole measurement attached to this Sundry as well as the notification of Injection commencement date for the well above.

XTO started injection commencement for the well above on 10/16/2020.

Spud Date: 12/16/2019

Rig Release Date: 02/22/2020

I hereby certify that the information above is true and complete to the best of my knowledge and belief.

SIGNATURE Cassie Evans TITLE Regulatory Analyst DATE 04/26/22

Type or print name Cassie Evans E-mail address: cassie.evans@exxonmobil.com PHONE: 462.218.3671

For State Use Only

APPROVED BY: Dean R McClure TITLE Petroleum Engineer DATE 08/28/2023

Conditions of Approval (if any):



**COMPANY DETAILS**

COMPANY: XTO

EMAIL:

CONTACT: Ben

LOCATION: JRJ Unit 6 Torino  
SWD 001

**JOB DETAILS**

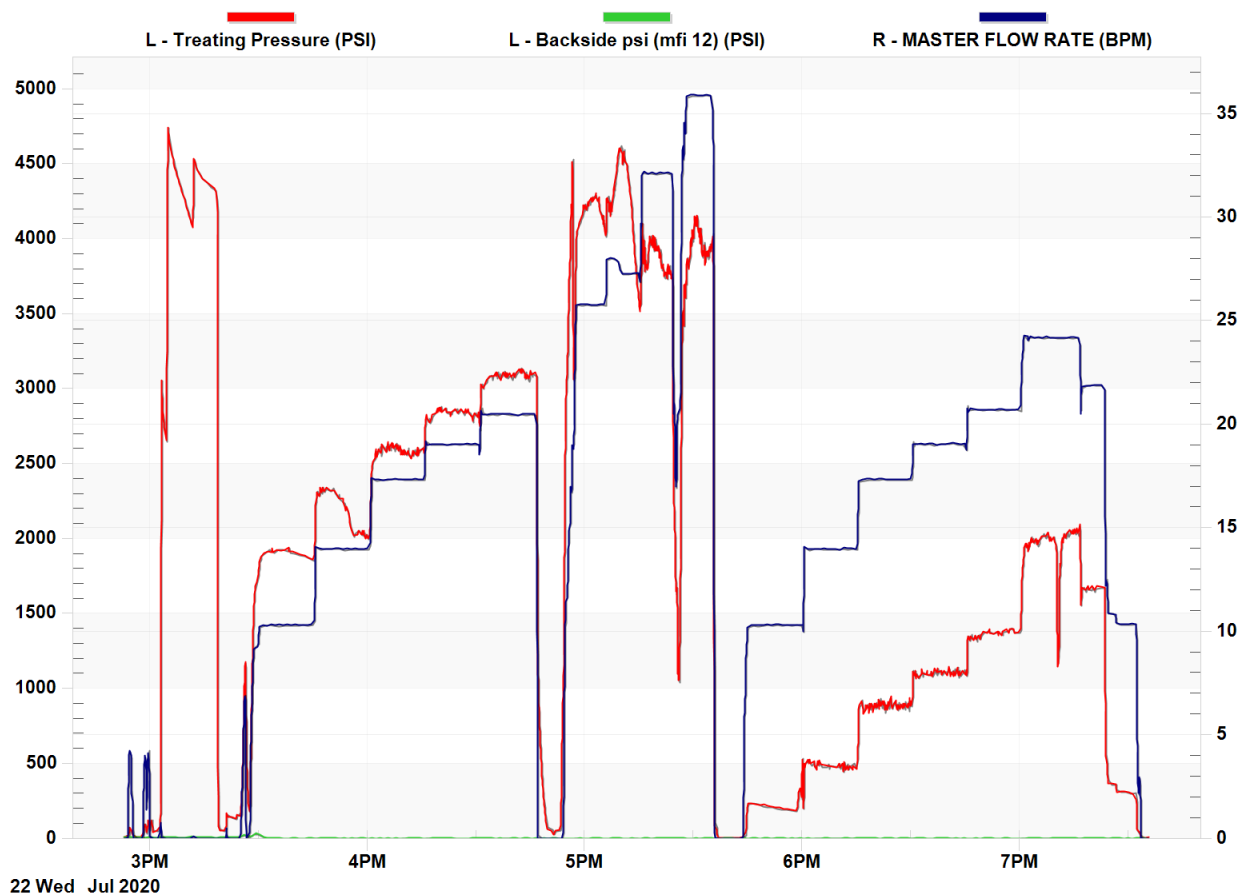
DATE July 22, 2020

START TIME 14:52:48

UNIT:

END TIME 19:35:56

AIR TEMP:



JOB LOG



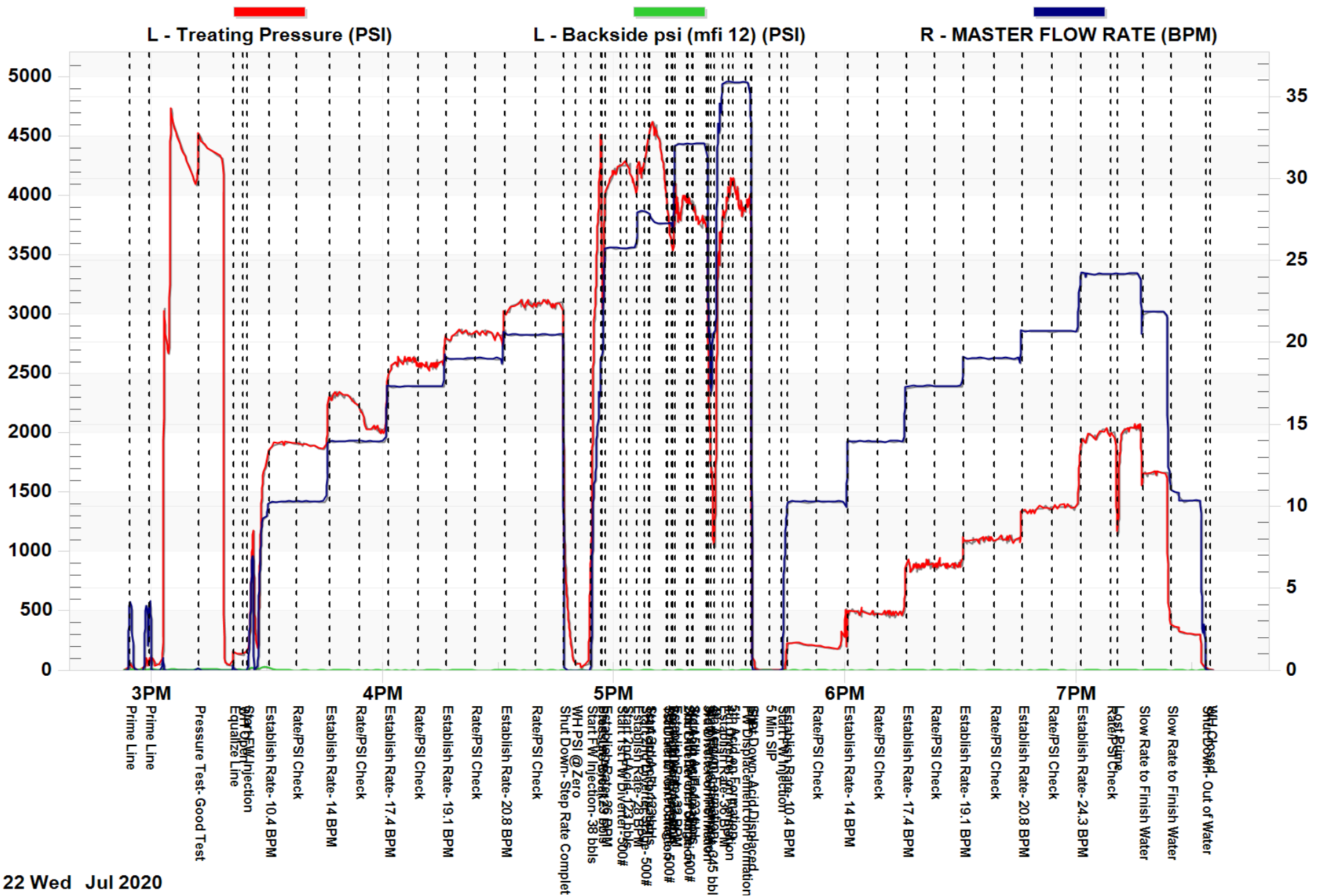

**JOB LOG**

TIME	Treating Pressure (PSI)	MASTER FLOW RATE (BPM)	MASTER FLOW TOTAL (BBL)	Backside psi (mfi 12) (PSI)	No Sensor Selected	No Sensor Selected	No Sensor Selected	DESCRIPTION OF STAGE OR EVENT
14:54	75.63	4.13	1.63	5.60	0.00	0.00	0.00	Prime Line
14:59	115.79	4.17	8.58	0.00	0.00	0.00	0.00	Prime Line
15:12	4,521.29	0.00	10.20	5.60	0.00	0.00	0.00	Pressure Test- Good Test
15:21	144.73	0.00	0.09	0.00	0.00	0.00	0.00	Equalize Line
15:23	133.53	0.00	0.09	5.60	0.00	0.00	0.00	WH Open
15:24	144.73	0.00	0.09	11.19	0.00	0.00	0.00	Start FW Injection
15:30	1,846.99	10.31	33.09	23.32	0.00	0.00	0.00	Establish Rate- 10.4 BPM
15:37	1,870.33	10.24	104.77	0.00	0.00	0.00	0.00	Rate/PSI Check
15:46	2,315.74	13.91	195.67	0.00	0.00	0.00	0.00	Establish Rate- 14 BPM
15:54	2,165.40	13.98	305.06	0.00	0.00	0.00	0.00	Rate/PSI Check
16:01	2,460.47	17.43	411.60	0.00	0.00	0.00	0.00	Establish Rate- 17.4 BPM
16:09	2,668.70	17.30	546.06	0.00	0.00	0.00	0.00	Rate/PSI Check

JOB LOG								
TIME	Treating Pressure (PSI)	MASTER FLOW RATE (BPM)	MASTER FLOW TOTAL (BBL)	Backside psi (mfi 12) (PSI)	No Sensor Selected	No Sensor Selected	No Sensor Selected	DESCRIPTION OF STAGE OR EVENT
16:16	2,744.34	19.04	673.90	0.00	0.00	0.00	0.00	Establish Rate- 19.1 BPM
16:24	2,802.23	19.03	816.11	0.00	0.00	0.00	0.00	Rate/PSI Check
16:31	3,073.95	20.49	964.83	0.00	0.00	0.00	0.00	Establish Rate- 20.8 BPM
16:39	3,073.95	20.42	1,128.72	0.00	0.00	0.00	0.00	Rate/PSI Check
16:47	955.24	0.00	1,272.39	0.00	0.00	0.00	0.00	Shut Down- Step Rate Completed
16:50	41.09	0.00	0.00	0.00	0.00	0.00	0.00	WH PSI @ Zero
16:54	1,134.52	0.13	0.00	0.00	0.00	0.00	0.00	Start FW Injection- 38 bbls
16:56	4,579.18	18.93	33.37	0.00	0.00	0.00	0.00	Pressure Break
16:57	3,073.95	18.80	39.57	5.60	0.00	0.00	0.00	Start 1st Acid- 123 bbls
16:57	4,161.79	25.78	58.12	0.00	0.00	0.00	0.00	Establish Rate- 26 BPM
17:01	4,347.61	25.87	163.57	0.00	0.00	0.00	0.00	Start 1st FW Diverter- 500#
17:03	4,277.58	25.88	203.70	0.00	0.00	0.00	0.00	Start 2nd Acid- 123 bbls
17:06	4,295.32	27.95	274.60	0.00	0.00	0.00	0.00	Establish Rate- 28 BPM
17:08	4,243.03	27.97	326.88	0.00	0.00	0.00	0.00	Start 2nd Diverter Stage- 500#
17:09	4,555.84	27.83	360.09	0.00	0.00	0.00	0.00	1st Acid on Formation
17:09	4,682.83	27.87	366.62	0.00	0.00	0.00	0.00	Start 3rd Acid- 123 bbls
17:13	3,895.67	27.26	483.65	0.00	0.00	0.00	0.00	1st Diverter on Formation
17:13	3,843.38	27.31	489.15	0.00	0.00	0.00	0.00	Start 3rd Diverter Stage- 500#
17:15	3,595.00	27.28	523.36	0.00	0.00	0.00	0.00	2nd Acid on Formation
17:15	3,756.54	29.15	530.11	0.00	0.00	0.00	0.00	Start 4th Acid- 123 bbls
17:15	4,173.93	32.16	546.58	0.00	0.00	0.00	0.00	Establish Rate- 32 BPM
17:19	4,063.75	32.27	647.14	0.00	0.00	0.00	0.00	2nd Diverter on Formation
17:19	3,942.36	32.15	652.83	0.00	0.00	0.00	0.00	Start 4th Diverter Stage- 500#
17:20	3,901.27	32.27	686.89	0.00	0.00	0.00	0.00	3rd Acid on Formation
17:20	3,820.97	31.96	693.12	0.00	0.00	0.00	0.00	Start 5th Acid- 123 bbls
17:24	3,652.89	32.20	809.62	0.00	0.00	0.00	0.00	3rd Diverter on Formation
17:24	2,252.24	21.05	820.01	0.00	0.00	0.00	0.00	Slow Rate to Finish Acid
17:25	1,609.81	17.26	834.12	0.00	0.00	0.00	0.00	Start FW Displacement- 345 bbls

JOB LOG								
TIME	Treating Pressure (PSI)	MASTER FLOW RATE (BPM)	MASTER FLOW TOTAL (BBL)	Backside psi (mfi 12) (PSI)	No Sensor Selected	No Sensor Selected	No Sensor Selected	DESCRIPTION OF STAGE OR EVENT
17:26	1,036.48	20.41	849.19	0.00	0.00	0.00	0.00	4th Acid on Formation
17:28	3,710.78	35.95	918.07	0.00	0.00	0.00	0.00	Establish Rate- 36 BPM
17:29	3,942.36	35.99	973.37	0.00	0.00	0.00	0.00	4th Diverter on Formation
17:30	4,364.42	35.85	1,013.53	5.60	0.00	0.00	0.00	5th Acid on Formation
17:34	4,081.49	35.96	1,136.55	0.00	0.00	0.00	0.00	FW Displacement on Formation
17:35	2,802.23	23.17	1,179.15	0.00	0.00	0.00	0.00	ISIP
17:36	81.24	0.00	1,181.28	11.19	0.00	0.00	0.00	Shut Down- Acid Displaced
17:40	0.00	0.00	1,181.28	0.00	0.00	0.00	0.00	5 Min SIP
17:43	6.54	0.24	0.01	0.00	0.00	0.00	0.00	Start FW Injection
17:45	220.37	10.31	11.14	0.00	0.00	0.00	0.00	Establish Rate- 10.4 BPM
17:52	202.63	10.33	87.04	11.19	0.00	0.00	0.00	Rate/PSI Check
18:00	468.75	14.07	174.30	0.00	0.00	0.00	0.00	Establish Rate- 14 BPM
18:08	492.09	14.04	281.98	0.00	0.00	0.00	0.00	Rate/PSI Check
18:16	915.09	17.38	387.84	0.00	0.00	0.00	0.00	Establish Rate- 17.4 BPM
18:23	862.80	17.28	516.61	0.00	0.00	0.00	0.00	Rate/PSI Check
18:30	1,094.37	19.05	646.90	0.00	0.00	0.00	0.00	Establish Rate- 19.1 BPM
18:38	1,141.06	19.03	798.03	0.00	0.00	0.00	0.00	Rate/PSI Check
18:46	1,383.84	20.75	935.28	0.00	0.00	0.00	0.00	Establish Rate- 20.8 BPM
18:53	1,302.60	20.69	1,097.75	0.00	0.00	0.00	0.00	Rate/PSI Check
19:01	1,933.83	24.39	1,257.12	0.00	0.00	0.00	0.00	Establish Rate- 24.3 BPM
19:09	1,986.12	24.21	1,442.25	0.00	0.00	0.00	0.00	Rate/PSI Check
19:10	1,563.12	24.04	1,483.35	0.00	0.00	0.00	0.00	Lost Prime
19:17	1,719.06	21.89	1,645.03	0.00	0.00	0.00	0.00	Slow Rate to Finish Water
19:24	359.50	10.84	1,790.64	0.00	0.00	0.00	0.00	Slow Rate to Finish Water
19:33	12.14	0.00	1,874.67	0.00	0.00	0.00	0.00	Shut Down- Out of Water
19:34	0.00	0.00	1,874.67	0.00	0.00	0.00	0.00	WH Closed

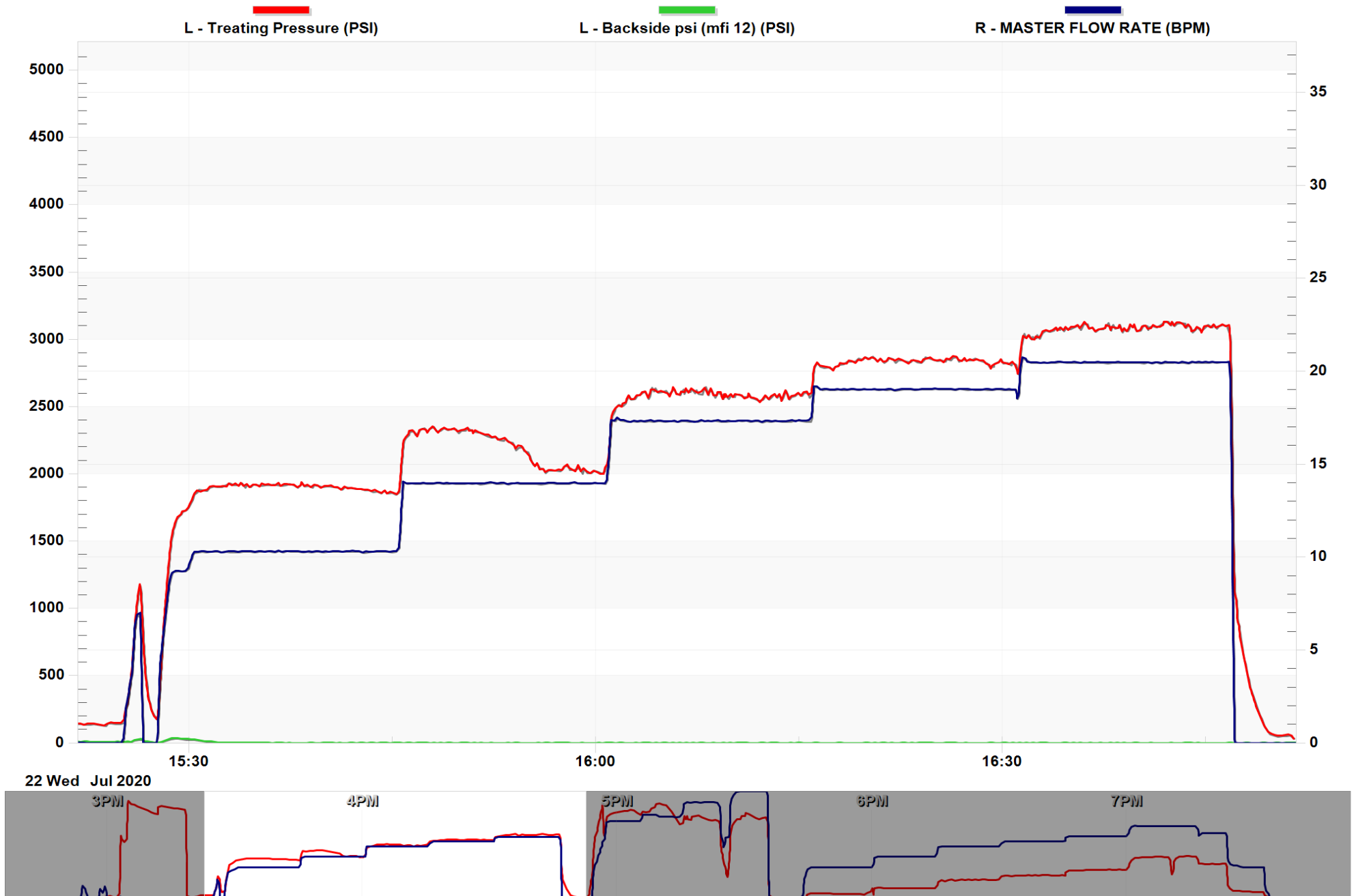
### Graph With Job Log Items



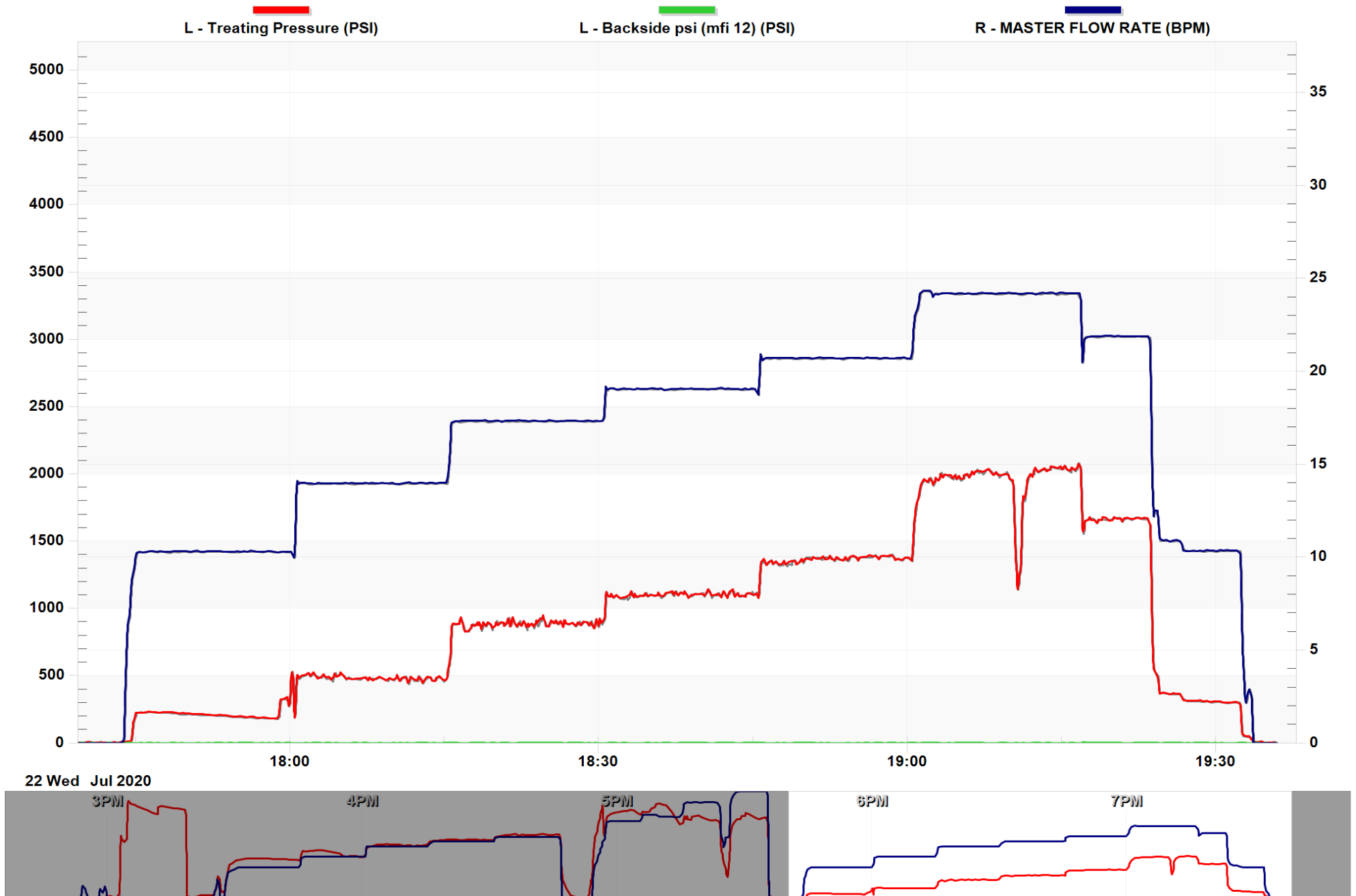
22 Wed Jul 2020

Report Created: 22-Jul-20

### Custom Graph 1



### Custom Graph 2



22 Wed Jul 2020

3PM

4PM

5PM

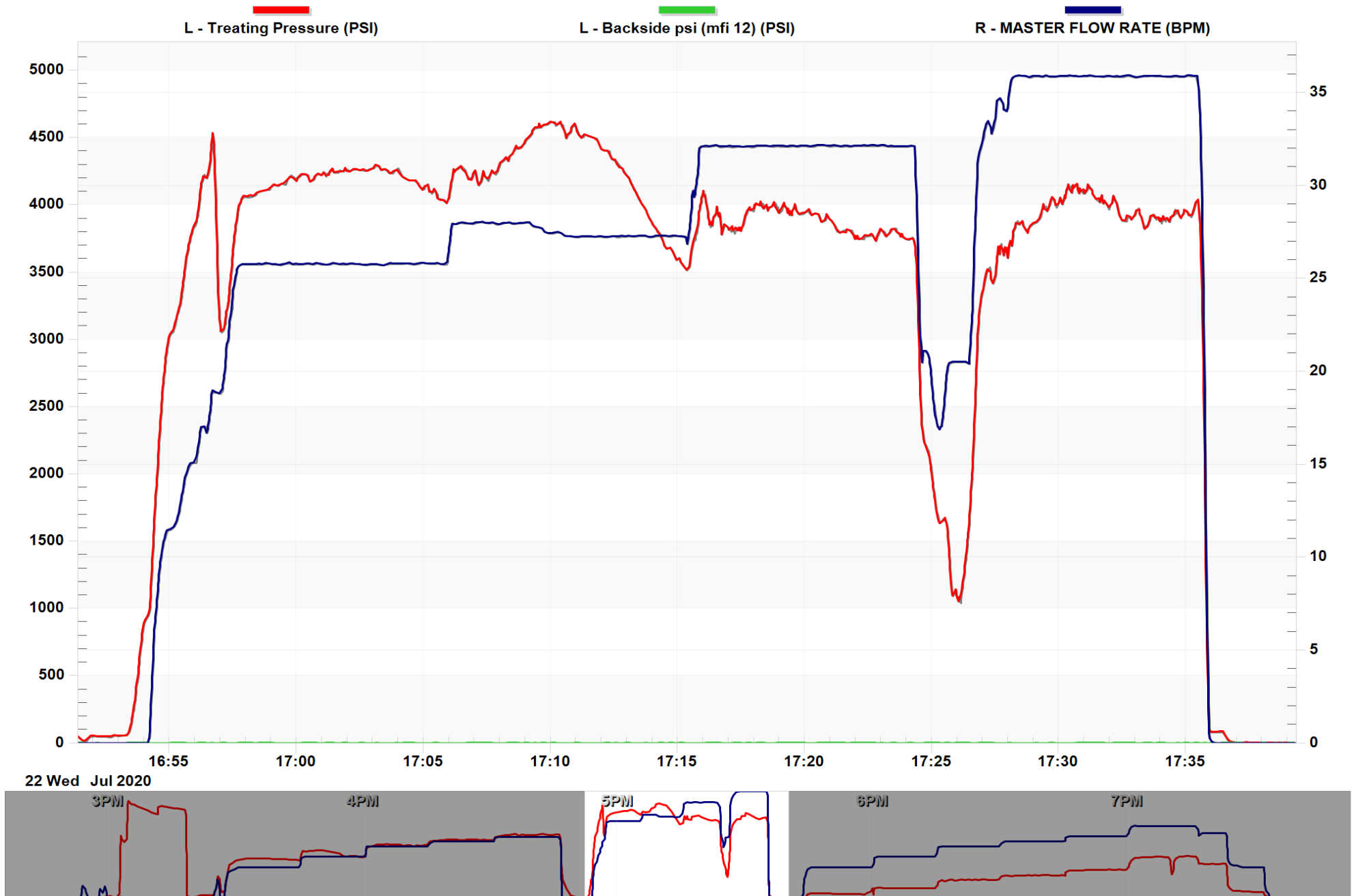
6PM

7PM

Report Created: 22-Jul-20



### Custom Graph 3



**District I**  
 1625 N. French Dr., Hobbs, NM 88240  
 Phone:(575) 393-6161 Fax:(575) 393-0720

**District II**  
 811 S. First St., Artesia, NM 88210  
 Phone:(575) 748-1283 Fax:(575) 748-9720

**District III**  
 1000 Rio Brazos Rd., Aztec, NM 87410  
 Phone:(505) 334-6178 Fax:(505) 334-6170

**District IV**  
 1220 S. St Francis Dr., Santa Fe, NM 87505  
 Phone:(505) 476-3470 Fax:(505) 476-3462

**State of New Mexico**  
**Energy, Minerals and Natural Resources**  
**Oil Conservation Division**  
**1220 S. St Francis Dr.**  
**Santa Fe, NM 87505**

CONDITIONS

Action 102037

**CONDITIONS**

Operator: XTO PERMIAN OPERATING LLC. 6401 HOLIDAY HILL ROAD MIDLAND, TX 79707	OGRID: 373075
	Action Number: 102037
	Action Type: [C-103] Sub. General Sundry (C-103Z)

**CONDITIONS**

Created By	Condition	Condition Date
dmcclore	None	8/28/2023